



DE VALK
YACHT BROKERS



BENETEAU OCEANIS 45



DE VALK
YACHT BROKERS

BENETEAU OCEANIS 45

BROKER'S COMMENTS

Beneteau Oceanis 45, building year 2013 now sold by her second owner from new. Yanmar diesel engine, bowthruster, furlingmast and genua makes her very easy to handle by a short crew. Large cockpit with folding bathing platform. Inside layout with three cabins and two bathrooms. Viewing possible by appointment.

Arne Doodeman

SPECIFICATIONS

Dimensions	13.50 x 4.49 x 2.27 (m)	Builder	Chantiers Bénéteau
Built	2013	Cabins	3
Material	GRP	Berths	8
Engine(s)	1 x Yanmar 4JH5E diesel	Hp/Kw	54.00 (hp), 39.74 (kw)
Asking price	sold (VAT)	Lying	contact Monnickendam

CONTACT

Sales office	De Valk Monnickendam	Telephone	+31 299 65 63 50
Address	Hoogedijk 6 1145 PM Katwoude The Netherlands	E-mail	monnickendam@devalk.nl

DISCLAIMER

These particulars are given in good faith as supplied but cannot be guaranteed.



GENERAL

Model	BENETEAU OCEANIS 45
Type	sailing yacht
LOA (m)	13,50
LWL (m)	12,98
Beam (m)	4,49
Draft (m)	2,27
Air draft min (m)	20,60
Year built	2013
Builder	Chantiers Bénéteau
Country	France
Designer	Finot - Conq & Associés
Displacement (t)	10,5
Ballast (tonnes)	2808KG
CE norm	A
Hull material	GRP
Hull colour	white
Hull shape	round-bilged
Superstructure material	GRP
Rubbing strake	Wood with stainless steel
Deck material	GRP
Deck finish	teak
Superstructure deck finish	non-skid moulded in
Cockpit deck finish	teak
Deckhatch	yes
Portholes	yes
Fuel tank (litre)	polyethylene - 200 litres
Freshwater tank (litre)	polyethylene
Blackwater tank (litre)	polyethylene
Wheel steering	cable steering
Outside helm position	- Double wheel steering, carbon wheels



Emergency tiller	yes
Extra info	yes
Extra info	2 extra stuurwielen originele (af fabriek) aanwezig.

ACCOMMODATION

Cabins	3
Berths	8
Interior	- Modern interior with three cabins and two bathrooms
Floor	woodprint
Open cockpit	yes
Saloon	yes
Heating	diesel ducted hot air Webasto
Chart table	yes
Dinette to convert into berth	- Settee in the saloon can convert into a double berth.
Galley	yes
Countertop	yes
Sink	stainless steel
Cooker	calor gas 2 burner Eno (2023)
Oven	(2023)
Fridge	- Fridge under the countertop and fridge with freezing compartment.
Hot water system	Quick Nautic boiler B3 40 liter
Water pressure system	electrical
Owners cabin	French bed
Wardrobe	hanging/drawers/shelves
Bathroom	en suite
Toilet	yes
Toilet system	electric Jabsco
Wash basin	yes
Shower	yes
Guest cabin 1	double bed



Wardrobe	drawers and shelves
Bathroom	shared
Toilet	yes
Toilet system	manual Jabsco
Wash basin	yes
Shower	yes
Guest cabin 2	double bed
Wardrobe	drawers and shelves

MACHINERY

No of engines	1
Make	Yanmar
Type	4JH5E
HP	54
kW	39.74
Fuel	diesel
Engine cooling system	freshwater heat exchanger
Drive	sail-drive
Saildrive seal	yes
Engine controls	bowden cable
Bowthruster	Max power
Exhaust	watercooled
Propeller type	folding
Propeller blades	- 3 bladed propeller
Manual bilge pump	yes
Electric bilge pump	Rule
Batteries	2 x 105 ah Sportline and 3 x batteries.
Battery monitor	yes
Battery charger	Cristec 12V-60A
Inverter	Cristec Solo 12V-200VA
Shorepower	with cable



NAVIGATION

Compass	2 x Plastimo Olympic 135
VHF	B&G
VHF handheld	B&G A60 wireless handset (2023)
Autopilot	B&G
Radar/GPS/plotter	3 x B&G
AIS receiver	B&G

EQUIPMENT

Sprayhood	yes
Cockpit cover	yes
Cockpit cushions	yes
Cockpit table	yes
Bathing platform	Electric folding bathing platform
Boarding ladder	- Stainless steel with wooden steps
Deck shower	- Warm and cold
Anchor	Delta
Anchor chain	- Galvanized chain
Chain counter	- Quick chain counter
Windlass	electrical Quick
Sea railing	wire
Grab rail (superstructure)	stainless steel
Railing side opening gates	yes
Pushpit	yes
Pulpit	yes
Fenders	yes
Mooring lines	yes
TV	Sony
Radio	Fusion and Pioneer
Clock - barometer	Barigo barometer
Fire extinguisher	yes



RIGGING

Rigging	fractional
Standing rigging	wire
Brand mast	yes
Material mast	aluminium
Spreaders	2 x aluminium spreaders
Mainsail	+ 1x Dacron
Stoway mast	yes
Genoa	+ 1x Dacron
Genoa furler	- Facnor LS180
Gennaker	yes
Boomvang	yes
Primary sheet winch	- Harken 900 duo power electric and Harken 40 2 speed.
Genoa sheetwinches	2 x Harken 50 2speed
Spi-pole	aluminium
Gennaker pole	aluminium Selden



BENETEAU OCEANIS 45



BENETEAU OCEANIS 45



BENETEAU OCEANIS 45



BENETEAU OCEANIS 45



BENETEAU OCEANIS 45



BENETEAU OCEANIS 45



BENETEAU OCEANIS 45



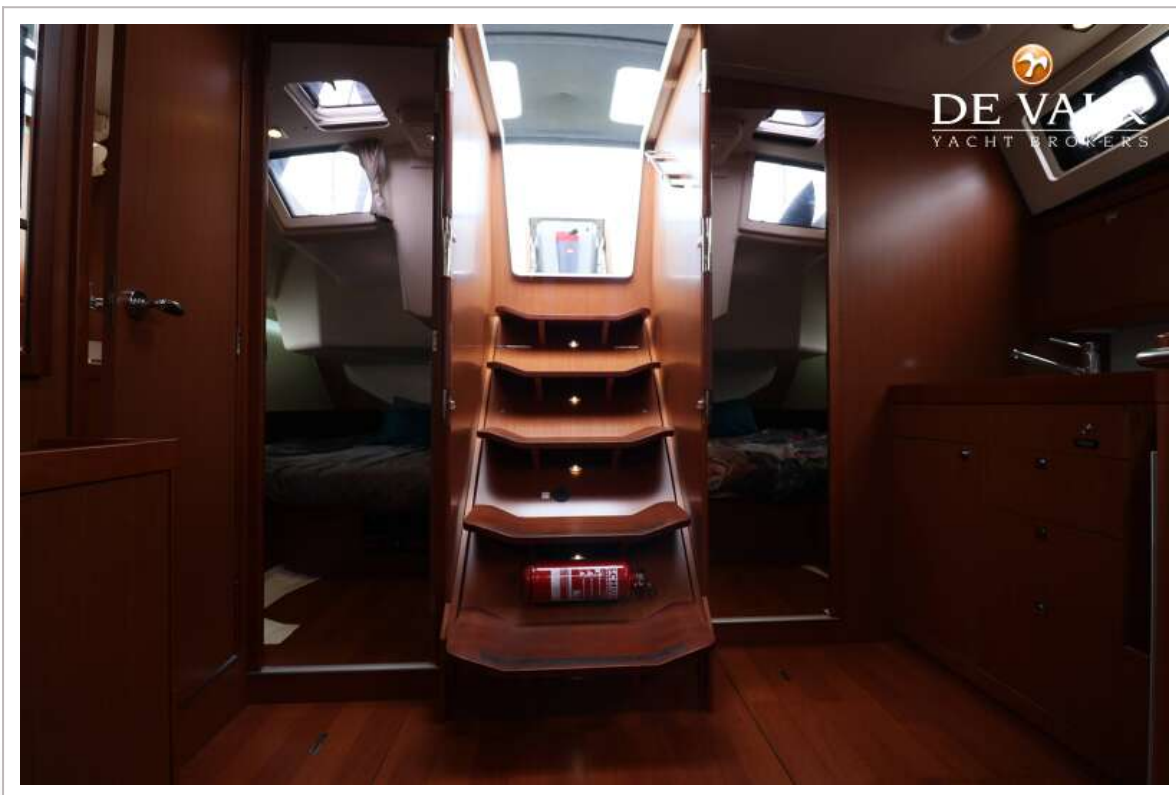
BENETEAU OCEANIS 45



BENETEAU OCEANIS 45



BENETEAU OCEANIS 45



BENETEAU OCEANIS 45



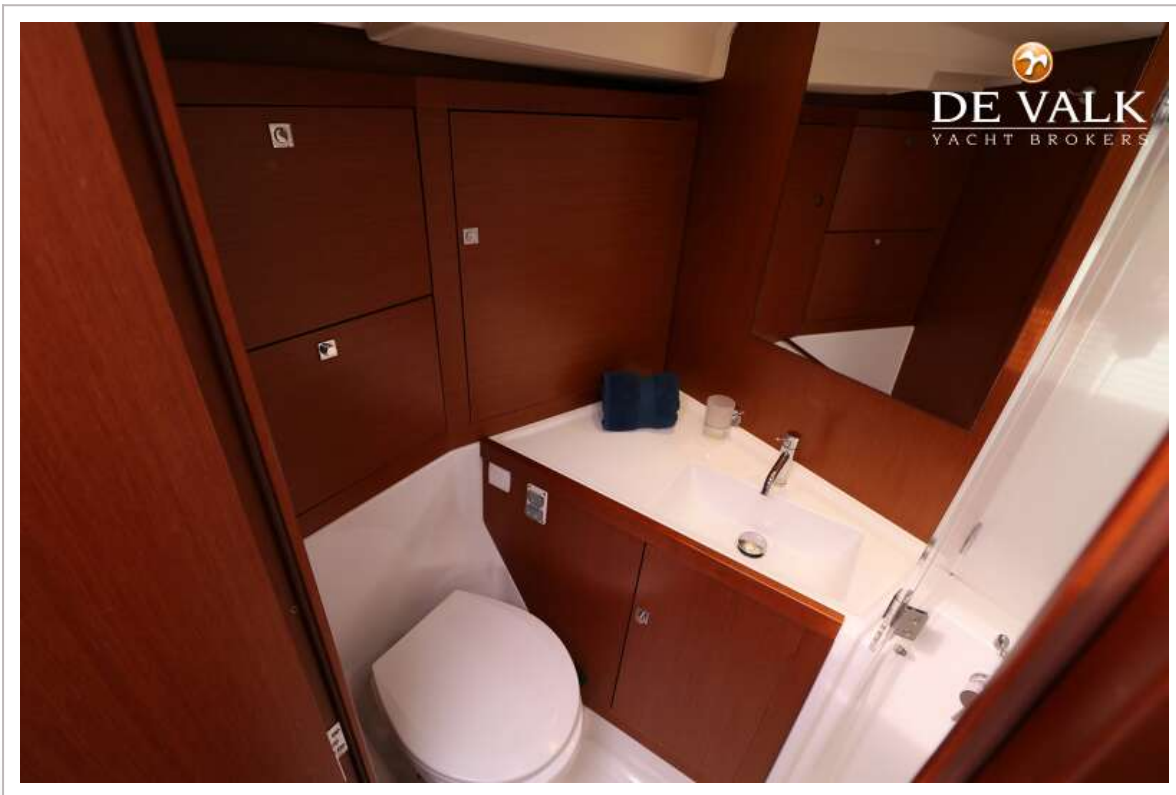
BENETEAU OCEANIS 45



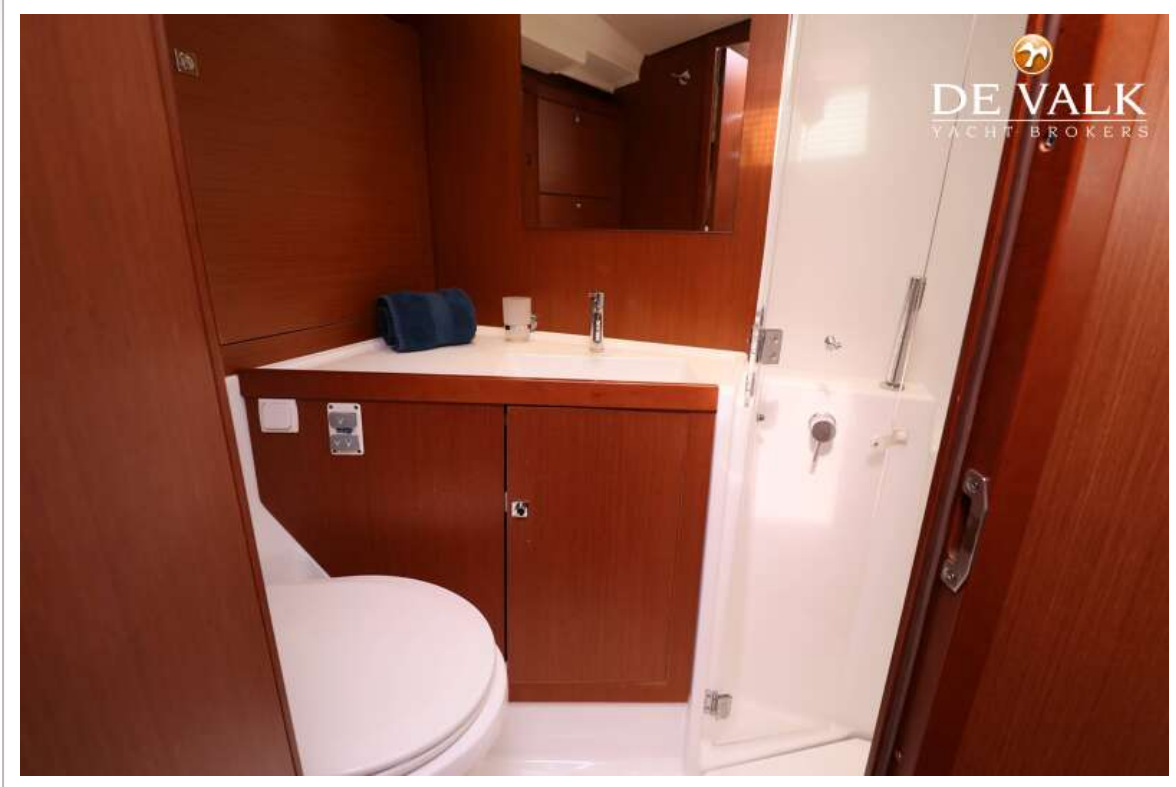
BENETEAU OCEANIS 45



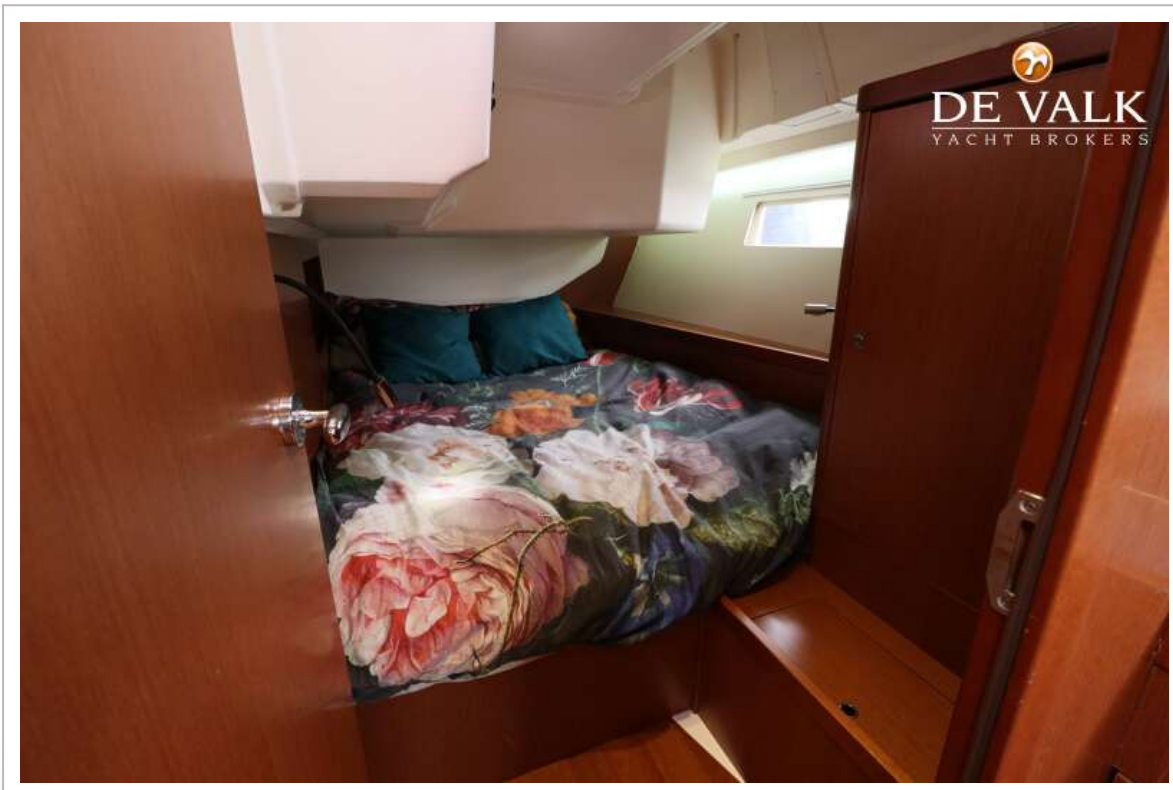
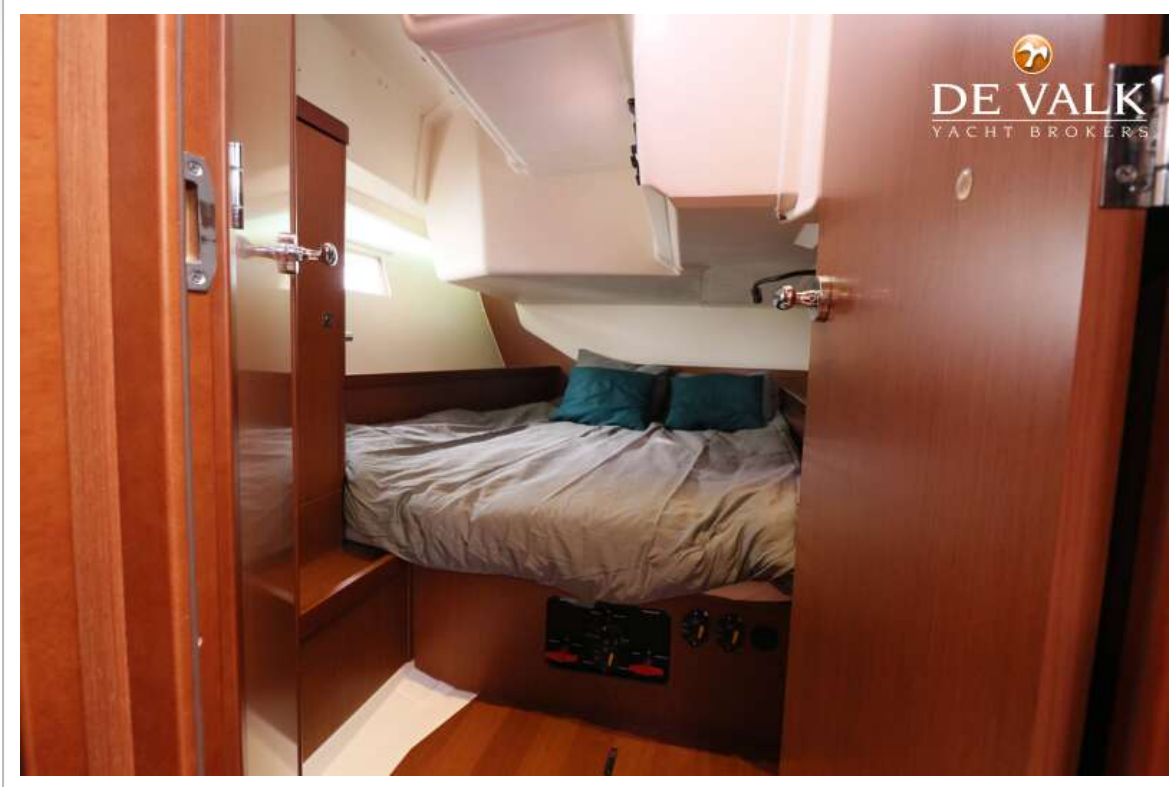
BENETEAU OCEANIS 45



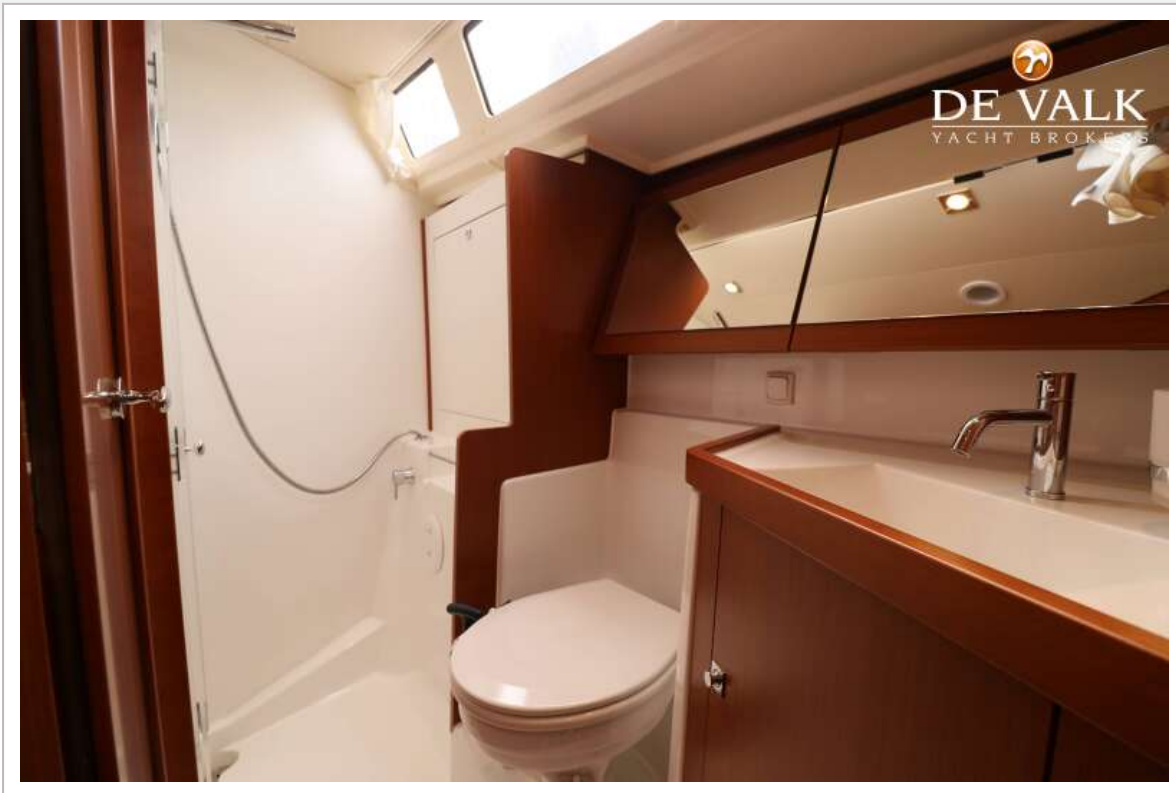
BENETEAU OCEANIS 45



BENETEAU OCEANIS 45



BENETEAU OCEANIS 45



BENETEAU OCEANIS 45

