



DE VALK
YACHT BROKERS



GALEON 380 FLY



DE VALK
YACHT BROKERS

GALEON 380 FLY

BROKER'S COMMENTS

Galeon 380 Fly "White Pearl" built in 2005. Two cabins, bathroom, galley and saloon. Two Volvo Penta D4 diesel engines and bowthruster. The diesel engines are maintained the last year by a Volvo Penta dealer. Recent upgrades like: Mastervolt charger/inverter, Raymarine navigation equipment. "White Pearl" is in a very good condition for her age. Viewing possible by appointment.

Reinier van der Wolf

SPECIFICATIONS

Dimensions	11.49 x 3.73 x 0.90 (m)	Builder	Galeon yachts
Built	2005	Cabins	2
Material	GRP	Berths	6
Engine(s)	2 x Volvo Penta D4-200 diesel	Hp/Kw	2 x 200.00 (hp), 147.20 (kw)
Asking price	€ 149.000 (VAT Paid)	Lying	elsewhere / Not at sales office

CONTACT

Sales office	De Valk Monnickendam B.V.	Telephone	+31 (0)299 65 63 50
Address	Hoogedijk 6 1145 PM Katwoude NL	E-mail	monnickendam@devalk.nl

DISCLAIMER

These particulars are given in good faith as supplied but cannot be guaranteed.



GALEON 380 FLY

GENERAL

Model	GALEON 380 FLY
Type	motor yacht
LOA (m)	11,49
Beam (m)	3,73
Draft (m)	0,90
Headroom (m)	1,98
Year built	2005
Builder	Galeon yachts
Country	Poland
Designer	PPHJ Galeon Poland
Displacement (t)	9
CE norm	B
Hull material	GRP
Hull colour	white
Hull shape	deep-V
Superstructure material	GRP
Rubbing strake	rubber
Deck material	GRP
Deck finish	non-skid moulded in
Cockpit deck finish	teak
Window frame	stainless steel
Deckhatch	1 x Bowman
Portholes	stainless steel
Flybridge	yes
Flybridge cover	yes
Mast can be lowered	electric
Fuel tank (litre)	stainless steel Approx. 990 litres
Freshwater tank (litre)	Approx: 500 litres
Blackwater tank (litre)	yes
Wheel steering	hydraulic



Inside helm position	yes
Flybridge helm position	yes

ACCOMMODATION

Cabins	2
Berths	6
Interior	mahogany
Floor	- Carpet and wood
Open cockpit	yes
Saloon	yes
Heating	diesel ducted hot air Eberspacher D4S (BB)
Heating 2	diesel ducted hot air Second hot air heating (SB)
Dinette to convert into berth	Settee in the saloon can be converted into a double berth.
Sliding door to cockpit	yes
Galley	yes
Countertop	corian -Blue colored
Sink	stainless steel
Cooker	diesel - 2 burner Wallas
Fridge	- Vitrefrigo with freezing compartment (2021)
Hot water system	yes
Water pressure system	electrical
Owners cabin	French bed
Wardrobe	hanging/drawers/shelves
Bathroom	shared
Toilet	yes
Toilet system	electric
Wash basin	yes
Shower	yes
Guest cabin 1	double bed
Wardrobe	hanging and shelves



MACHINERY

No of engines	2
Make	Volvo Penta
Type	D4-200
HP	200
kW	147.20
Fuel	diesel
Year installed	2005
Engine hours	650
Engine cooling system	freshwater heat exchanger
Drive	stern
Engine controls	electrical Volvo Penta
Gearbox	hydraulic
Bowthruster	electric Sidepower
Exhaust	watercooled
Propeller type	Stainless steel duoprop, type H6
Manual bilge pump	- Plastimo
Electric bilge pump	yes
Batteries	2x Mastervolt 130 Ah AGM, 4 x Mastervolt gel batteries
Bowthruster battery	2 x Mastervolt AGM 140ah
Battery monitor	Mastervolt Easy view panel 5+
Battery charger	Mastervolt Chargemaster 12/25-3
Battery charger/inverter	Mastervolt Combimaster 12V/3000VA-100A
Shorepower	with cable
Trimtabs	Bennet selftrimming system with tabs. Volvo BTS trimtabs
Extra info	- Volvo Penta fuel filter

NAVIGATION

Compass	2 x Plastimo liquid compass
Depth sounder/log	Raymarine
VHF	Raymarine



GALEON 380 FLY

Autopilot	Raymarine
Rudder angle indicator	- In the screen of the autopilot
Radar	Raymarine Quantum radar
Radar/GPS/plotter	1x Raymarine Axiom 12 at the steering position inside and 2 x Raymarine Axiom 9 on the flybridge
Navigation lights	yes

EQUIPMENT

Bimini	On the flybridge
Cockpit cushions	yes
Cockpit table	yes
Bathing platform	yes
Boarding ladder	stainless steel
Transom door	yes
Deck shower	Warm and cold
Anchor	15 KG
Anchor chain	yes
Windlass	electrical Quick
Sea railing	stainless steel
Grab rail (superstructure)	stainless steel
Wiper	2x
Window heating	- On the SB window inside
Horn	yes
Fenders	yes
Mooring lines	yes
Radio	Fusion Apollo RA770
Clock - barometer	- Wempe Clock, baro and hygrometer
Extinguisher in engine room	yes



GALEON 380 FLY



GALEON 380 FLY



GALEON 380 FLY



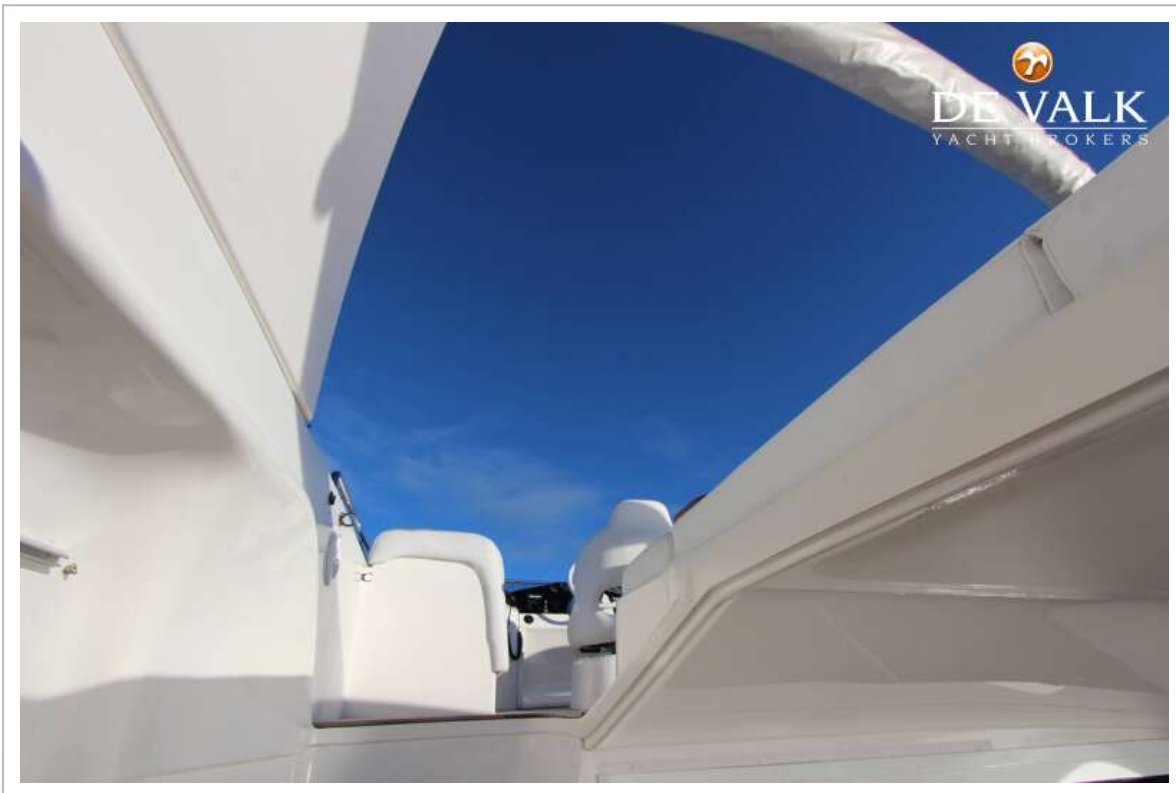
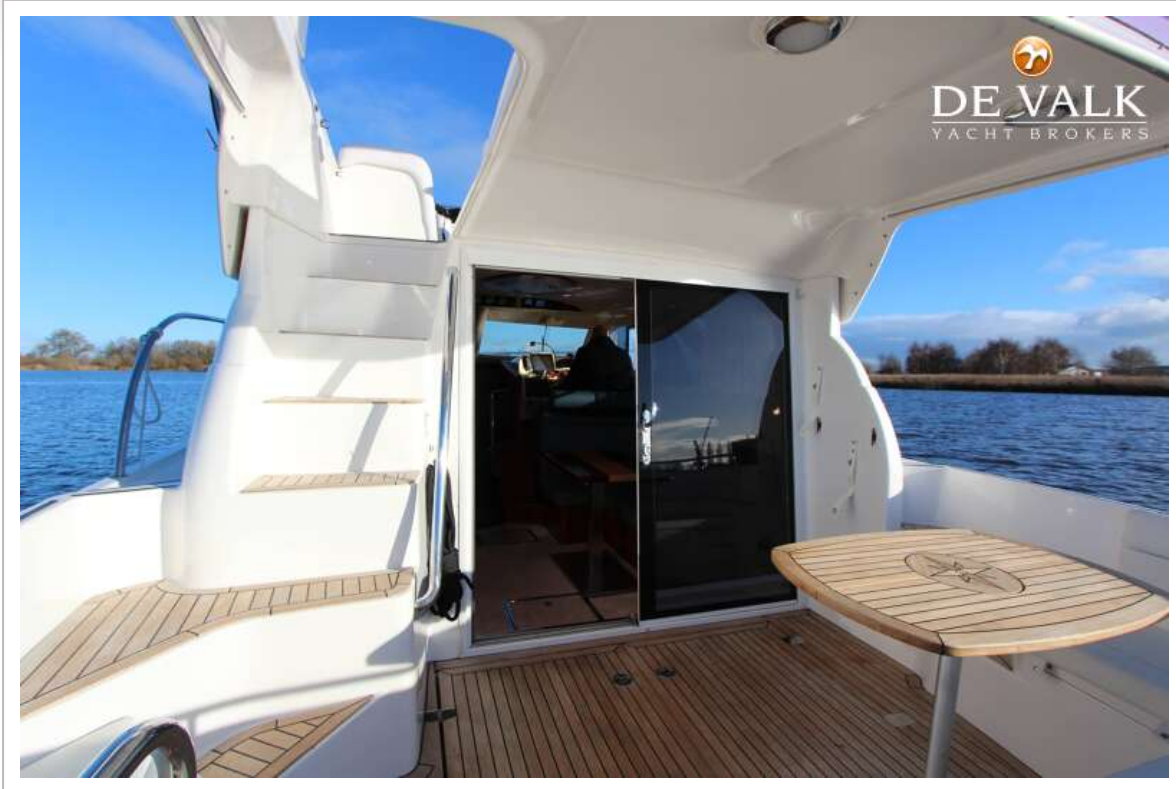
GALEON 380 FLY



GALEON 380 FLY



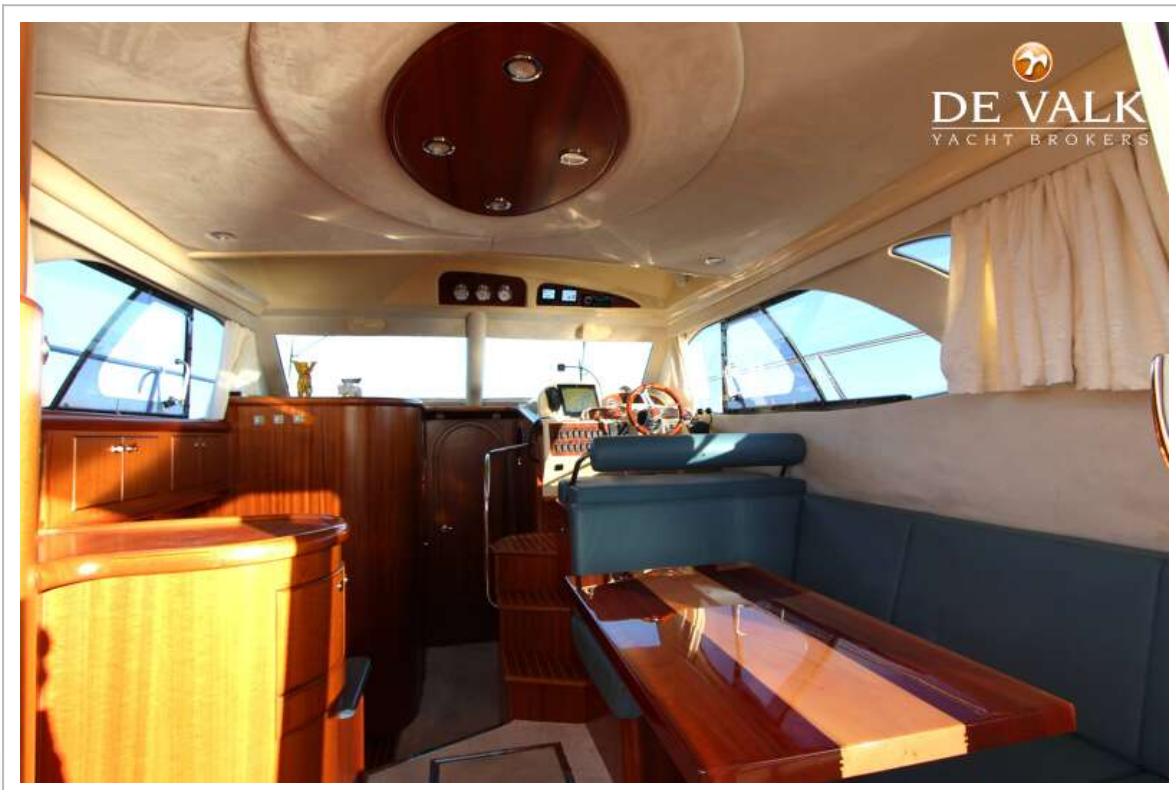
GALEON 380 FLY



GALEON 380 FLY



GALEON 380 FLY



GALEON 380 FLY



GALEON 380 FLY



GALEON 380 FLY



GALEON 380 FLY



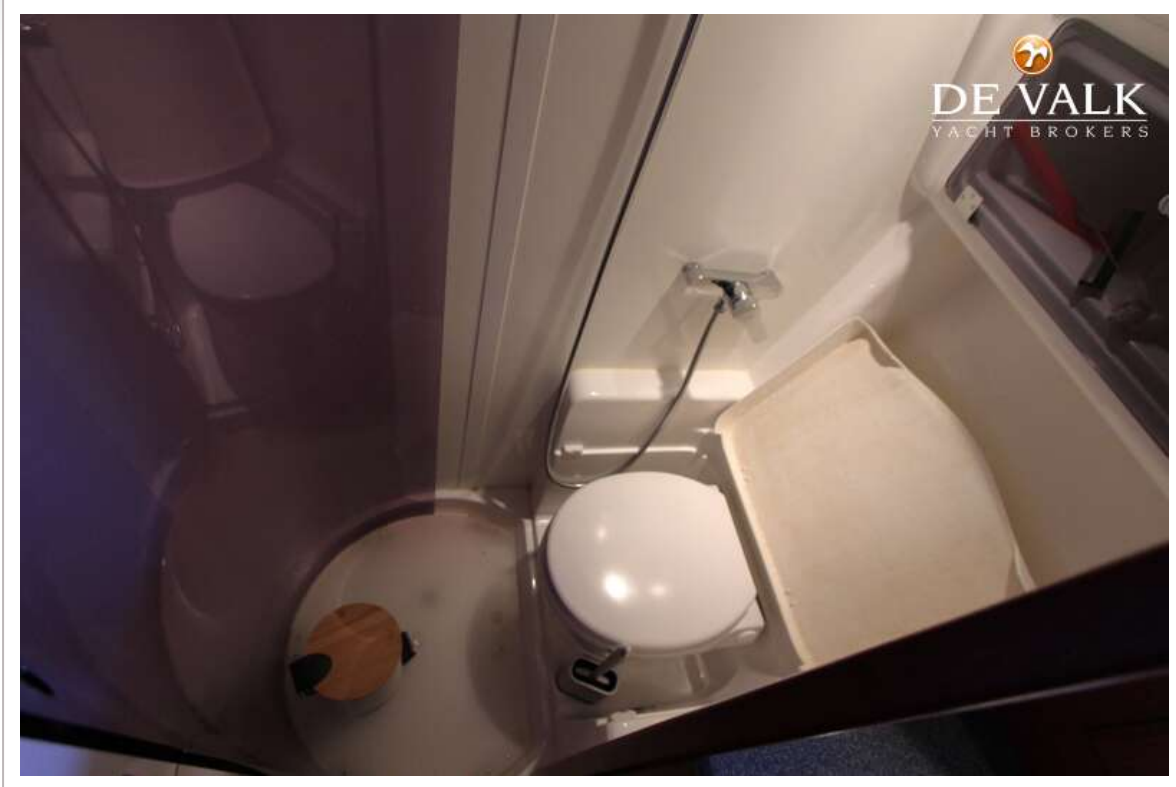
GALEON 380 FLY



GALEON 380 FLY



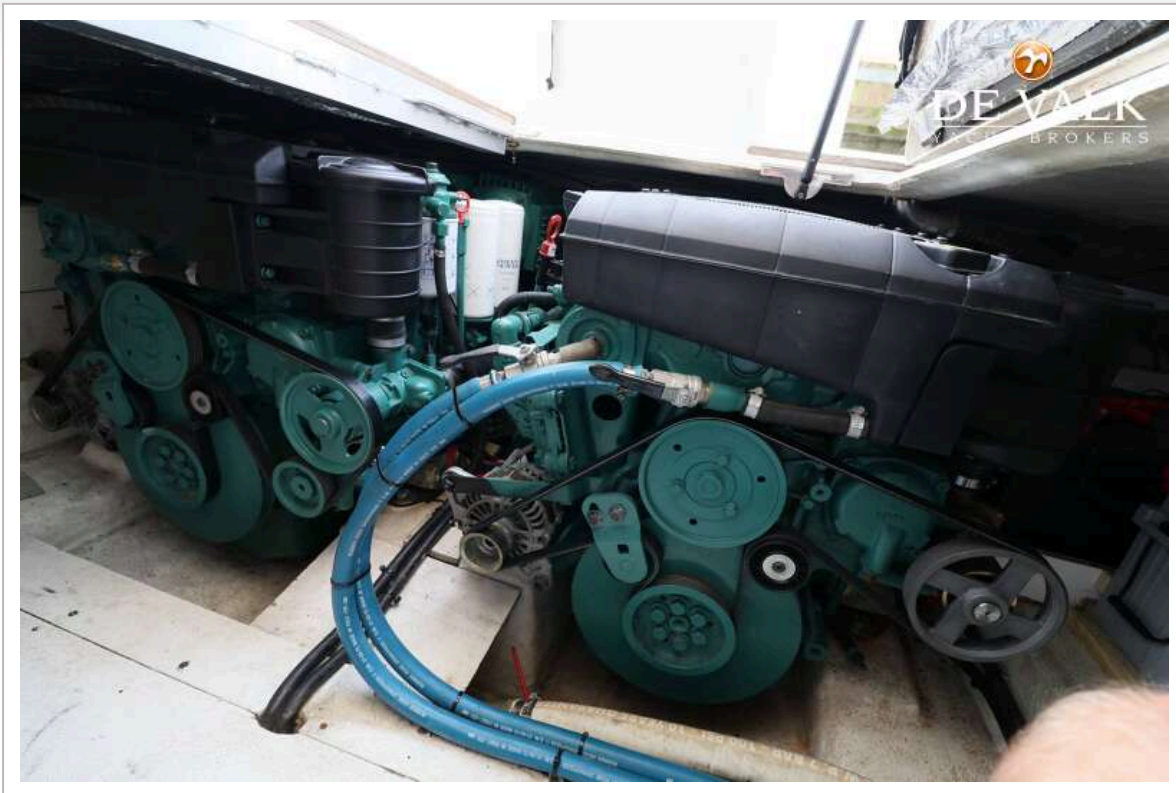
GALEON 380 FLY



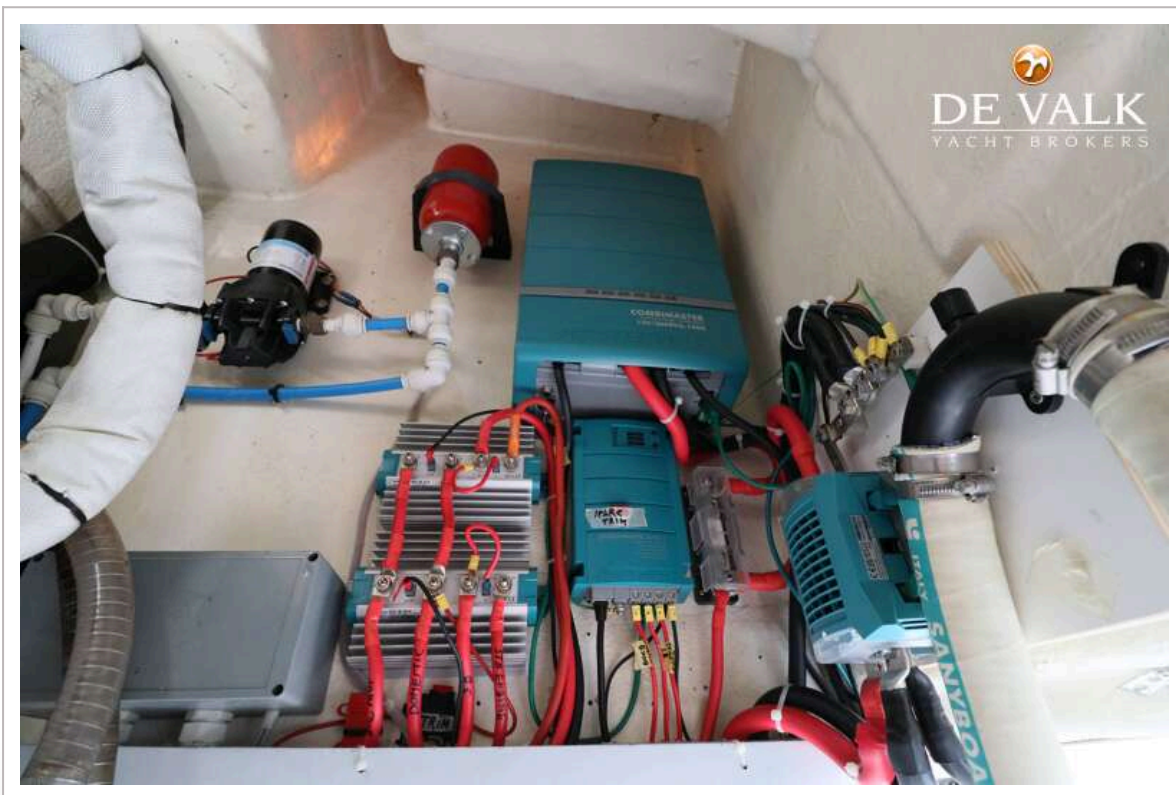
GALEON 380 FLY



GALEON 380 FLY



GALEON 380 FLY



GALEON 380 FLY

