



## HALLBERG RASSY 49 KETCH



# HALLBERG RASSY 49 KETCH

## BROKER'S COMMENTS

The Hallberg-Rassy 49 is a true blue water classic, a superb boat with extended cruising capability, also for worldwide cruising, or one to live aboard for long periods of time. This is the ideal combination of rugged construction, unusual comfort both on deck and below, and excellent handling characteristics on all points of sail. The 4 new sails are all furling. The owners enjoyed the boat for almost 20 years and maintained her with a lot of love. The boat is moored a bit south of Rotterdam, please contact our office in Sint Annaland, to make an appointment for a viewing.

*Nick Lanting*

## SPECIFICATIONS

<b>Dimensions</b>	14.96 x 4.42 x 2.20 (m)	<b>Builder</b>	Hallberg-Rassy Varvs AB
<b>Built</b>	1984	<b>Cabins</b>	3
<b>Material</b>	GRP	<b>Berths</b>	10
<b>Engine(s)</b>	1 x Volvo Penta TMD41B diesel	<b>Hp/Kw</b>	150.00 (hp), 110.40 (kw)
<b>Asking price</b>	sold (VAT )	<b>Lying</b>	elsewhere / Not at sales office

## CONTACT

<b>Sales office</b>	De Valk Sint Annaland B.V.	<b>Telephone</b>	+31 (0)166 601 000
<b>Address</b>	Koelhuisweg 4 4697 RM Sint Annaland NL	<b>E-mail</b>	sintannaland@devalk.nl

## DISCLAIMER

These particulars are given in good faith as supplied but cannot be guaranteed.



# HALLBERG RASSY 49 KETCH

## GENERAL

Model	HALLBERG RASSY 49 KETCH
Type	sailing yacht
LOA (m)	14,96
LWL (m)	12,50
Beam (m)	4,42
Draft (m)	2,20
Air draft (m)	21,65
Headroom (m)	2,00
Year built	1984
Builder	Hallberg-Rassy Varvs AB
Country	Sweden
Designer	Olle Enderlein & Christoph Rassy
Displacement (t)	20
Ballast (tonnes)	lead 8
Gross tonnage	20
Net tonnage	6
CE norm	NA
Hull material	GRP
Hull colour	white With dark blue striping
Hull shape	S-bilged
Keel type	long keel
Bilge keels	yes
Superstructure material	GRP
Rubbing strake	Brass
Deck material	GRP
Deck finish	teak White spray painted (Alexseal 2-components) in 2012, teak 1996
Superstructure deck finish	teak White spray painted (Alexseal 2-components) in 2012
Cockpit deck finish	teak Teak on the seats and teak grating on the floor
Antifouling (year)	2022
Dorades	5x Stainless steel with LED lights & stainless steel protect bar



# HALLBERG RASSY 49 KETCH

<b>Deckhatch</b>	7 x Mosquito screen
<b>Portholes</b>	aluminium All with a watertight lockable alu flap & 12 x Mosquito screen
<b>Insulation</b>	Extra insulation along hull applied next to beds & SB in salon
<b>Fuel tank (litre)</b>	stainless steel 1 x 400 (under the engine)
<b>Fuel tank 2 (litre)</b>	stainless steel 2 x 300 (under saloon sofa seats)
<b>Level indicator (fuel tank)</b>	Digital Tank Monitor
<b>Fuel daytank (litre)</b>	stainless steel 30 (above engine + fuelfilter with waterseparator)
<b>Level indicator (daytank)</b>	yes
<b>Freshwater tank (litre)</b>	GRP 1450
<b>Level indicator (freshwater)</b>	Digital Tank Monitor
<b>Blackwater tank (litre)</b>	stainless steel 2 x
<b>Blackwater tank extraction</b>	Both with 3-way valves and directly in water under water line
<b>Wheel steering</b>	Leather covered stainless steel steering wheel
<b>Outside helm position</b>	chain steering Solimar pedestal - All steering cables renewed in 2019
<b>Emergency tiller</b>	yes
<b>More info on hull</b>	In 2013 all through hull connections and sea cocks were renewed & the complete underwater hull was peeled. After which epoxy mats were applied and layers of epoxy were spray painted on the underwater hull. In 2022 the underwater hull was sanded, a layer of Hempel Silic Seal and a layer of Hempel Silic One Tiecoat were applied and finished with two layers of Hempel Silic One Red (a biocide-free, high-solid anti-fouling coating. A microlayer of silicone-based hydrogel provides a smooth, low-friction surface that prevents organisms from attaching to the hull and propeller). Service period of Silic One on the hull is two years
<b>More info on paintwork</b>	White spray painted (Alexseal 2-components) hull with blue striping & waterline (Alexseal 2-components) & all portholes spray painted (Alexseal 2-components) in 2008



# HALLBERG RASSY 49 KETCH

## Extra info

Very solid and safe fixed hardtop, laminated to the superstructure & white with dark blue striping spray painted in 2013. Teak on the roof of hardtop. The front windows can be opened (centre window full, other half). The inside of the fixed hardtop has been refurnished in 2008 and dimmable LED lights were applied. The chart tables in the cockpit, on both sides of the entrance, were replaced by grey HPL plates in 2022. In cold and heavy weather the cockpit can be closed quickly and easily with a divisible cockpit cover

## Extra info

The original sliding entrance hatch has been replaced in 2013 by a transparent plastic sliding hatch, equipped with a roll-up sunshade & the original sliding hatch is also present. There are 2 teak entrance doors (1x with a window and 1x with a ventilation grille). Air vents on both aft deck locker hatches. Large locker in the cockpit

## Extra info

There are additional windows available for the deck hatches, in case of condensation risk in the winter period

## ACCOMMODATION

### Cabins

3

### Berths

10

### Interior

mahogany Upholstery & curtains renewed in saloon in 2023

### Floor

teak and holly

### Aft deck

yes

### Saloon

With L-shaped saloon sofa on SB and a saloon sofa on PS (both convertible to berth 2,10 x 0,55 m). Storage space behind the backrests and in cabins above. SB Bunk bed: 2,05 x 0,55 m & PS Bunk bed: 2,00 x 0,55 m. All with lee-cloths

### Headroom saloon (m)

2,00

### Heating

diesel ducted hot air 1x Webasto HL90 (2008)

### Heating 2

1x Heater convector connected in 2009 to internal cooling engine

### Chart table

On starboard side - Headroom : 1,87 m

### Aft Cabin

1 x

### Dinette

yes

### Convertible berth

yes



# HALLBERG RASSY 49 KETCH

<b>Galley</b>	On SB - U-shaped - Headroom : 1,87 - 1,92 m
<b>Countertop</b>	Duropol Renewed in 2007
<b>Sink</b>	stainless steel 2 x
<b>Cooker</b>	calor gas Force 10 - 3 burners
<b>Oven</b>	Force 10 oven/grill
<b>Gas alarm</b>	With electric remote controlled gas valve and ventilation
<b>Microwave</b>	Severin (2013)
<b>Fridge</b>	Top loader with a 24 Volt compressor
<b>Freezer</b>	New in 2023 : Front loader with drawers & a 24 Volt compressor
<b>Hot water system</b>	220V + engine 1x 80 Litre & 1 x 10 Litre
<b>Water pressure system</b>	electrical Jabsco Flo (2018)
<b>Manual and/or foot pump</b>	Foot pump (salt water) & hand pump (fresh water)
<b>Coffee maker</b>	Kirk Electronic Coffee machine 24 Volt
<b>Owners cabin</b>	double bed + single bed In the aft cabin - Headroom : 1,95 - 2,07 m
<b>Bed length (m)</b>	2,00 x 1,25 & 2,00 x 0,80
<b>Wardrobe</b>	hanging and shelves
<b>Bathroom</b>	en suite Headroom : 1,84 m
<b>Toilet</b>	en suite
<b>Toilet system</b>	electric Jabsco (2015) with a fresh water flush pump (new in 2023)
<b>Wash basin</b>	in the bathroom
<b>Shower</b>	en suite Headroom : 1,72 - 1,88 m
<b>Extra info</b>	LED strips in aft cabin - Headroom in hallway : 1,74 - 1,76 m
<b>Guest cabin 1</b>	bunk bed Starboard side in front - Headroom : 2,03 m
<b>Bed length (m)</b>	2,00 x 0,80 & 2,00 x 0,70
<b>Wardrobe</b>	hanging and shelves
<b>Bathroom</b>	shared Headroom : 1,92 - 2,07 m
<b>Toilet</b>	shared
<b>Toilet system</b>	electric Jabsco
<b>Wash basin</b>	in the bathroom
<b>Shower</b>	shared Headroom : 1,86 m



# HALLBERG RASSY 49 KETCH

Extra info	Headroom in hallway : 2,03 m
Guest cabin 2	single bed In workshop in the bow - Headroom : 1,86 - 1,97 m
Bed length (m)	2,00 x 0,65
Wardrobe	shelves
Extra info	The front cabin has been changed to a workshop with a V-worktop and a Scavenger's daughter mounted on it. Workshop has been painted in 2019.
Washing machine/dryer combi	Eumenia Babynova 1000 3 KG (2009)
Extra info	Teak wooden cutting board in the galley
Extra info	Entire interior revarnished in 2019. Mostly LED lights (with remote control) & several ventilators throughout the interior

## MACHINERY

No of engines	1
Make	Volvo Penta
Type	TMD41B
HP	150
kW	110.40
Fuel	diesel
Year installed	2014
Maximum speed (kn)	9
Cruising speed (kn)	8
Consumption (l/hr)	4,5
Engine hours	1891
Engine cooling system	freshwater heat exchanger
Drive	shaft
Engine controls	bowden cable
Gearbox	hydraulic Volvo MS4A
Bowthruster	electric 2 x 24 Volt Vetus TF12, 3 kW, each with a 3 bladed propeller
Exhaust	watercooled
Thrust bearing	Renewed in 2014



# HALLBERG RASSY 49 KETCH

<b>Propeller type</b>	fixed Renewed in 2014
<b>Propeller blades</b>	3
<b>Propeller shaft material</b>	stainless steel 40 mm - outer shaft bearing (2018) & 24 Volt alternator (2019)
<b>Shaft lubrication</b>	grease New in 2022 : Volvo Penta inner shaft bearing
<b>Manual bilge pump</b>	yes
<b>Electric bilge pump</b>	New in 2023
<b>Bilge alarm</b>	yes
<b>Electrical installation</b>	12 & 24 & 220 Volt
<b>Generator</b>	silent separator New in 2021 : Mastervolt Whisper 8000 - 6,4 kVA
<b>Running hours generator</b>	72
<b>Start battery</b>	1 x Optima Red Top 55 Ah (2015)
<b>Service battery</b>	72 x LiFePo4 3,2 V 45 Ah = 24 Volt 405 Ah Lithium (2015)
<b>Generator battery</b>	1 x Optima Red Top 55 Ah (2019)
<b>Bowthruster battery</b>	2 x Optima Yellow Top 55 Ah (2015)
<b>Battery monitor</b>	Several Battery Monitors
<b>Battery charger</b>	2 x Victron Skylla TG 24V/50A
<b>Inverter</b>	Victron Phoenix : 1x 24V/3000W (2014) & 1x 24V/800W & 1x 500W
<b>Wind generator</b>	Electric Energy D400 24 Volt (in the mizzen mast - 2011)
<b>Solar panel</b>	2 x 100 W & 1 x 200 Watt Solar panel installed (in 2015) on a stainless steel bracket on the stern. Two solar panels are hinged on gas springs, making them foldable up and down. In 2023 equipped with a new intelligent Fox-50 Solar Charge Regulator & a Cepever MPPT Solar Charge Controller.
<b>Diode battery combiners</b>	yes
<b>Shorepower</b>	with cable
<b>Insulation transformer</b>	Electronic isolation transformer with display (2008)
<b>Watermaker</b>	220 Volt. Refitted in 2015. Completely preserved in 2016, not used since. Functioning unknown, so needs to be checked
<b>Extra info</b>	Mastervolt AC-Power Analyzer ACM-I
<b>Extra info</b>	Several 12V, USB, 24V & 220V sockets throughout the boat
<b>Extra info</b>	Double diesel filter with waterseparator. Second alternator (24



## NAVIGATION

<b>Compass</b>	Sestrel 5 on the pedestal
<b>Electric compass</b>	2 x Autohelm ST50 Compass
<b>Depth sounder</b>	2 x Autohelm ST50 Depht
<b>Log</b>	Autohelm ST50 Speed
<b>Windset</b>	Autohelm ST50 Wind + VMG
<b>Repeater</b>	2 x Autohelm ST50 Multi (at card table & in cockpit)
<b>VHF</b>	2x Icom IC-M421 with Mic (in the cockpit & at the card table) & 2x Shipmate cockpit speaker
<b>VHF handheld</b>	Icom IC-M33
<b>Autopilot</b>	1 x 24 Volt Whitlock connected to the chain under the pedestal ( in the engine room) & 1 x Whitlock connected directly on the quadrant. Both systems are equipped with their own Autohelm ST7000 control panel (at the chart table). Since these systems cannot be used simultaneously, there is a selector switch at the chart table, after which the activated system also can be operated from the cockpit via the Raymarine ST6002 Display (mounted on the pedestal in 2019). As back-up is an Autohelm ST4000 present, which can be mounted on the steering wheel
<b>Rudder angle indicator</b>	Via the Raymarine ST6002 display
<b>Radar</b>	Simrad 4G radar dome antenna (installed in mizzen mast)
<b>GPS</b>	1 x Furuno GP 52 & 2 x Autohelm ST50 GPS
<b>Radar/GPS/plotter</b>	B&G Z8 Screen at chart table, connected to Simrad 4G radardome
<b>Weather receiver</b>	Furuno D Fax weather Navtex receiver
<b>Navtex</b>	Furuno Navtex NX-300
<b>Personal computer</b>	Laptop with navigation program
<b>PC connection</b>	yes
<b>Wifi antenna</b>	(2013) In mizzen mast, with switch, router, Smartlink and cables
<b>AIS transceiver</b>	AdvanSea Class B AIS Transceiver TR200 (2013)
<b>EPIRB</b>	1x EPIRB 1 Ocean Signal
<b>Camera</b>	PTZ Camera system in the mizzen mast
<b>Navigation lights</b>	LED; 3-Colour, anchor, steaming, deck, bow, stern & cockpit
<b>Searchlight</b>	yes



# HALLBERG RASSY 49 KETCH

## Extra info

2 x Reading light in the cockpit & 1 x at the chart table

## Extra info

Sailor T&T Inmarsat Mini M phone (not in use). Furuno Lightning Protector. Prosser Weathertrend Digital Barometer

## EQUIPMENT

### Fixed hardtop

Headroom : 1,66 m - Teak on the roof

### Cockpit cover

2 x Dark grey (1x high & 1x low, both with windows)

### Sun awning

Over the cockpit (2012)

### Winter cover

1x Wintercover & 1x Summercover (both over entire deck)

### Cockpit cushions

Loose cushions

### Cockpit table

Varnished teak with folding side panels and light

### Bathing platform

Custom Made in stainless steel with teak, mounted on the stern stainless steel

### Boarding ladder

Loose aluminium ladder

### Bow ladder

### Gangway

1 x Custom Made gangway (aluminium & stainless steel) & 1 x wood

### Deck shower

With hot & cold pressured fresh water

### Anchor

Rocna 45 KG (2015)

### Anchor chain

100 m Heavily galvanized & approved chain (new in 2023)

### Anchor 2

Bruce (80 lb) & Fisherman (54 lb). Anchor line & some meter chain

### Windlass

electrical Lofrans with deck buttons & a wired remote control

### Capstan

On the windlass

### Deck wash

Pump renewed in 2017

### Outboard support

On the pushpit

### Davits

stainless steel

### Davits controls

manual

### Sea railing

wire Double wired

### Grab rail (superstructure)

teak

### Railing side opening gates

Amidships on both sides & Portside on bow

### Pushpit

Stainless steel with a folding teak seat on SB

### Pulpit

Stainless steel



# HALLBERG RASSY 49 KETCH

Life raft	container Viking (2016), mounted on deck in front of the fixed hard top
Life raft (pers)	6
Last life raft survey	Never surveyed, so needs to be surveyed
Lifejackets	2 x
Lifebuoy	1 x White horse shoe rescue buoy & 1 x Rescue Sling
Danbuoy	1 x
Safety lines on deck	yes
Wiper	1 x (2007)
Horn	Loose horn
Radar reflector	Trilens radar reflector in the mizzen mast
Fenders	yes
Mooring lines	yes
Spare parts	Very extensive range of spare parts
Alarm system	Connected to a light on the mizzen mast & a light in the cockpit
TV	1x in Aft cabin & 1x Grundig TV in bunk bed cabin
Radio-cd player	Stein radio/CD/DVD/MP4 player
Cockpit speakers	2 x Ultra Linear
Speakers in salon	4 x
Clock - barometer	Clock, Barometer, temperature meter, chronometer & Barograph
Fire extinguisher	4 x
Extra info	Alarm system with notification to mobile phone (reporting points: sliding hatch, engine, bilge, shore power, temperature, gas & smoke detection and life camera image). Fire blanket. Rescue line on a reel on the pushpit. Small Duralock Safe. Bosuns chair
Extra info	Red lights installed in the anchor locker in 2018
Extra info	Very extensive documentation, manuals and maintenance history available

## RIGGING

Rigging	ketch-cutter
Standing rigging	Dyform New in 2023, including covers over tentioners



# HALLBERG RASSY 49 KETCH

<b>Brand mast</b>	Reckmann All wires in both masts renewed in 2008
<b>Material mast</b>	aluminium coated Both masts&booms white spray painted (Alexseal 2components-2008)
<b>Spreaders</b>	Main : 2x set of spreaders - Mizzen : 1 x set of spreaders
<b>Mainsail</b>	New in 2022 UK Sails Cruising Offshore Furling mainsail - 43m2
<b>Stoway mast</b>	Reckmann - Hydraulic
<b>Mizzen</b>	New 2022 UK Sails Cruising Offshore Furling mizzen sail (manual)
<b>Jib</b>	New 2022 UK Sails Cruising Offshore Furling Cutter Jib - 25,9m2
<b>Genoa</b>	New in 2022 UK Sails Cruising Offshore Furling Genoa - 74m2
<b>Genoa furler</b>	Reckmann - Hydraulic
<b>Genoa cover</b>	New in 2022 : Dark blue Genoa & Cutter Jib cover
<b>Cutter furler</b>	Hood 915 Seafurl - manual with an endless reefing line
<b>Gennaker</b>	Gennaker (2019)
<b>Spinnaker</b>	MPS (2014)
<b>Trysail</b>	yes
<b>Stormjib</b>	yes
<b>Reefing System</b>	main in-mast furling
<b>Boomvang</b>	gasspring Selden on mainsail boom & tackle on mizzen boom
<b>Primary sheet winch</b>	2 x Meissner 28 ST (main sheet)
<b>Secondary sheet winch</b>	2 x Meissner 28 ST (Cutter Jib Sheet)
<b>Genoa sheetwinches</b>	2 x Lewmar 65 ST
<b>Halyard winches</b>	Lewmar: Main: 2x43ST+1x46ST (with jammers) & 2x8. Mizzen: 2x16ST
<b>Reefing winch</b>	1 x Lewmar 8 (on boom of main mast)
<b>Spi-pole</b>	aluminium 2 x Hanging on front side of the main mast
<b>Jockey-pole</b>	aluminium 1 x
<b>Extra info</b>	Shape Tape & grey UV protection strip on both Genoa & Cutter Jib



## Extra info

Lewmar mainsheet rails with end-stops. All blocks are in alucarbon. Jack stays with tackle & Lewmar blocks. 6 x Spinlock jammer. Antal mainsheet blocks. Stainless steel granny bars around the main mast. The mast wiring runs through a stainless steel gooseneck to below deck. Stainless steel mast steps on mizzen mast till the spreaders. Stainless steel flag pole on top of the mizzen mast. There are some extra (older) spare sails available. After the furling sails of both masts have been lowered, strips can be hoisted into both mast profiles. This prevents the wind from causing an enormous whistling sound on both masts.



# HALLBERG RASSY 49 KETCH



# HALLBERG RASSY 49 KETCH



# HALLBERG RASSY 49 KETCH



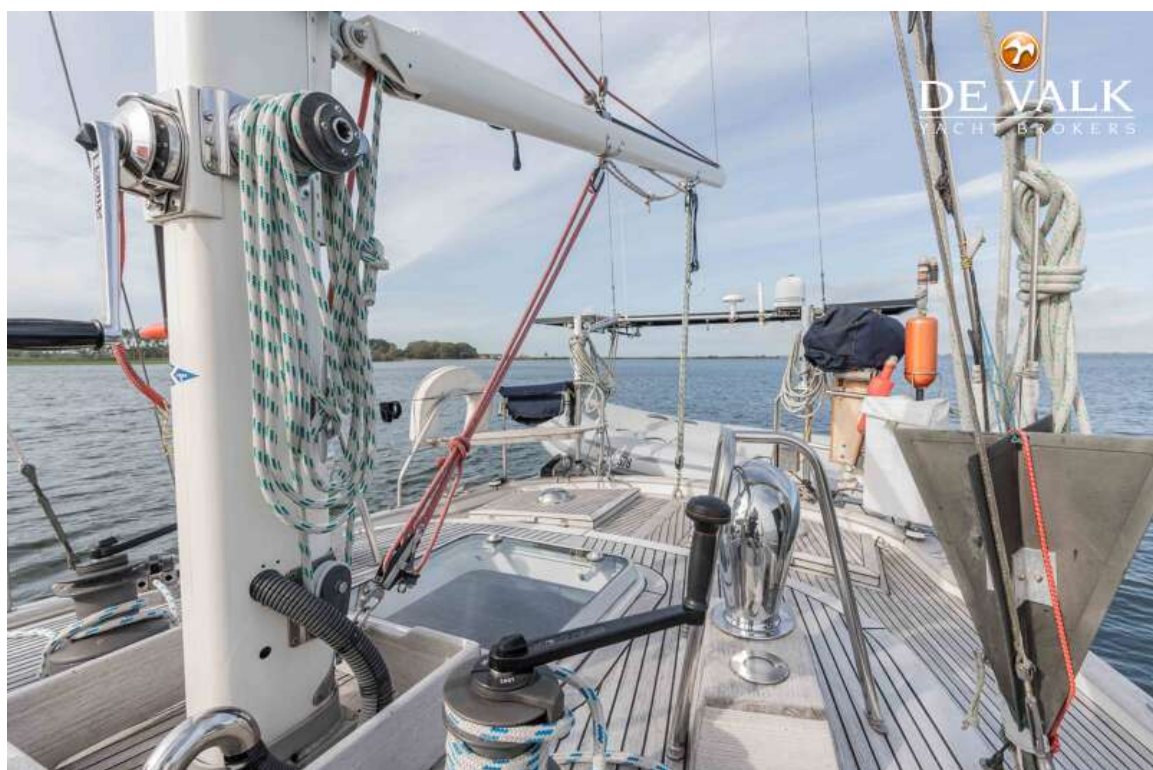
# HALLBERG RASSY 49 KETCH



# HALLBERG RASSY 49 KETCH



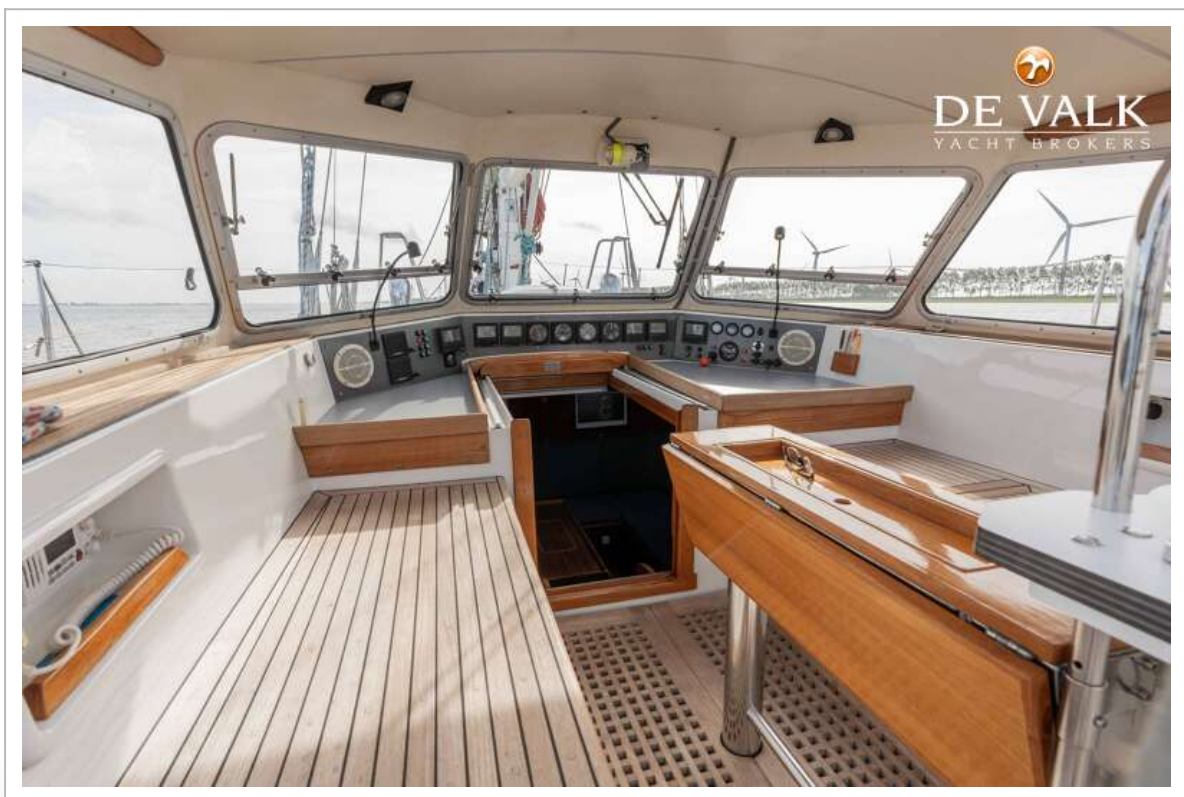
# HALLBERG RASSY 49 KETCH



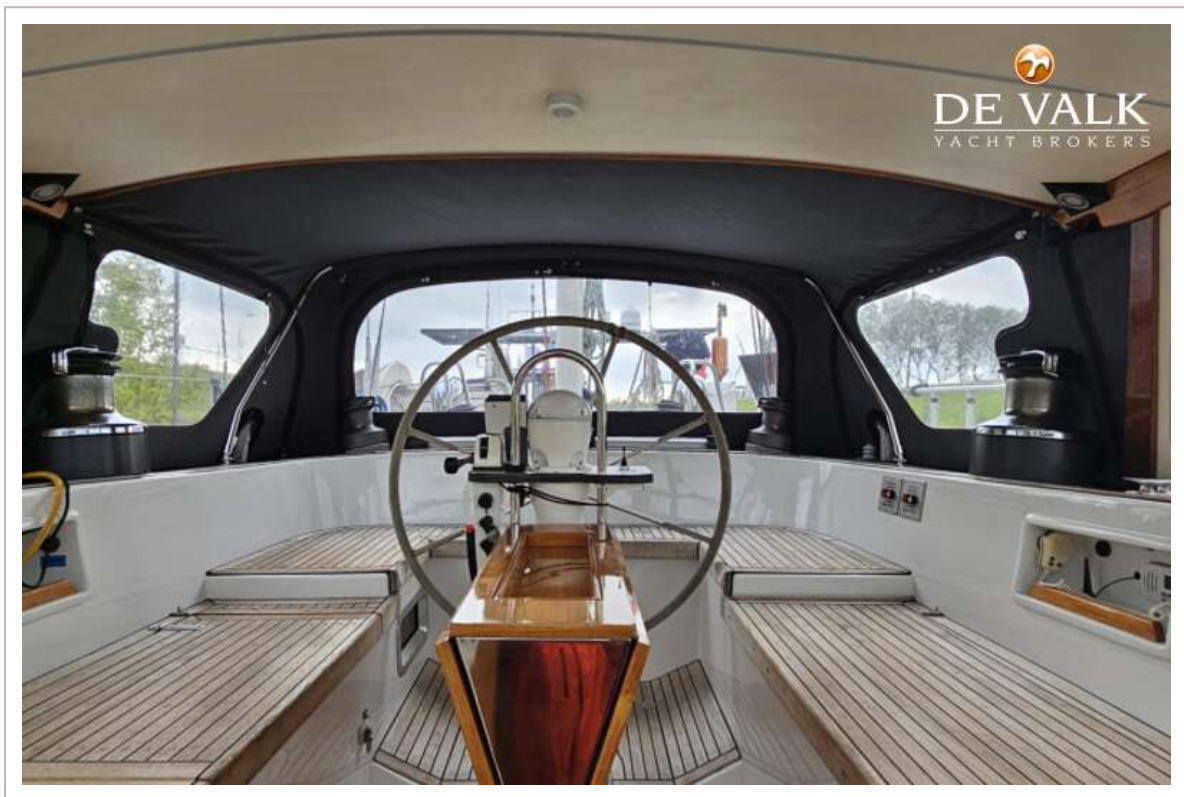
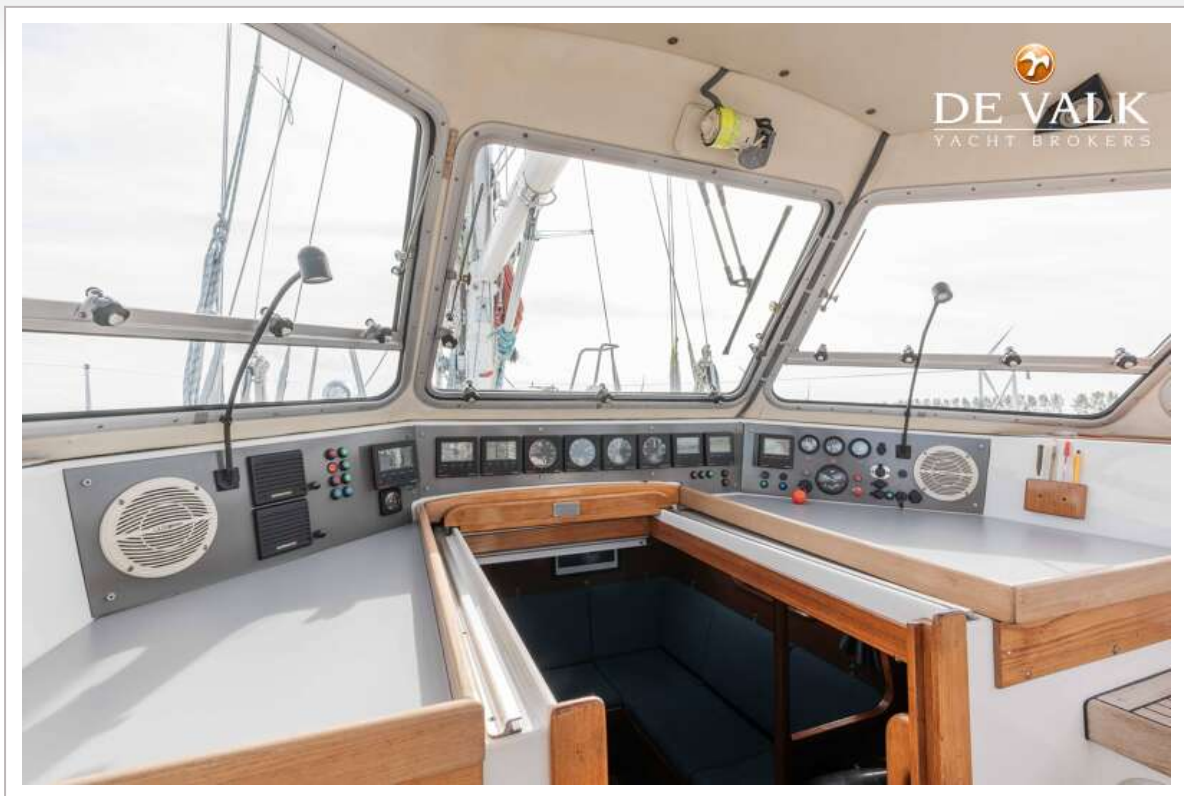
# HALLBERG RASSY 49 KETCH



# HALLBERG RASSY 49 KETCH



# HALLBERG RASSY 49 KETCH



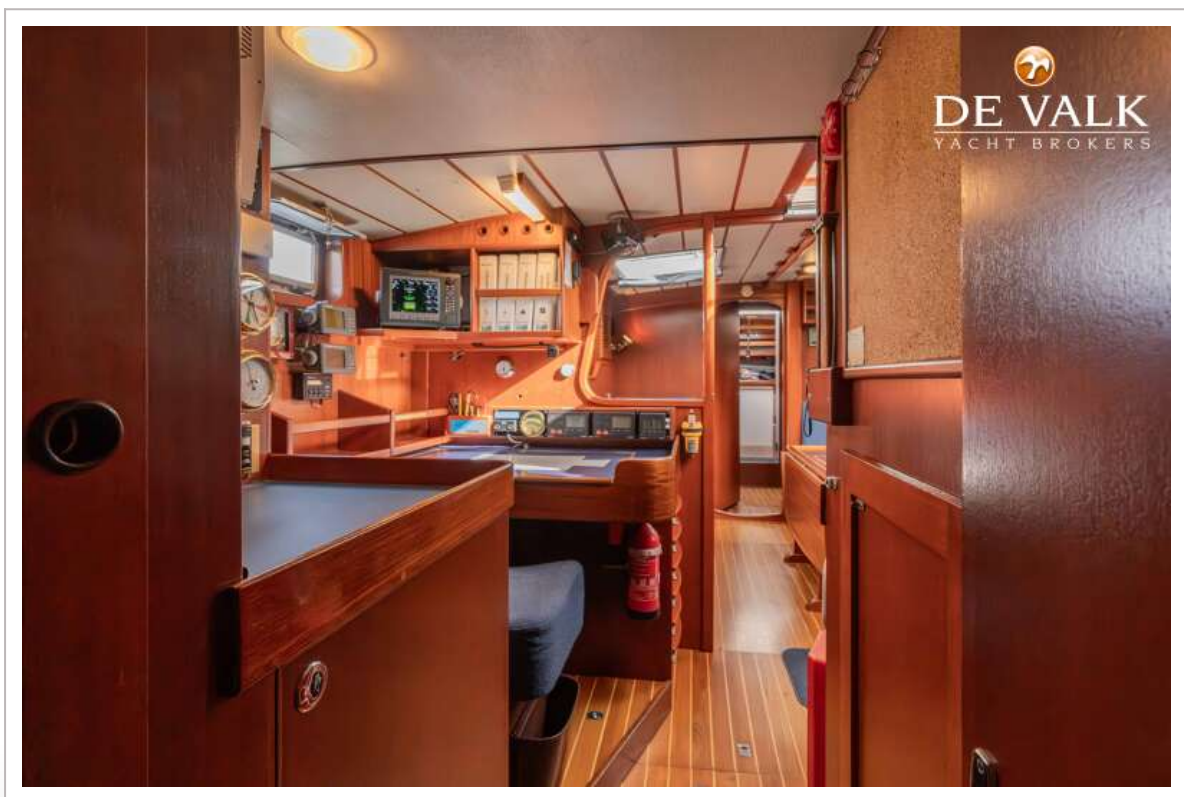
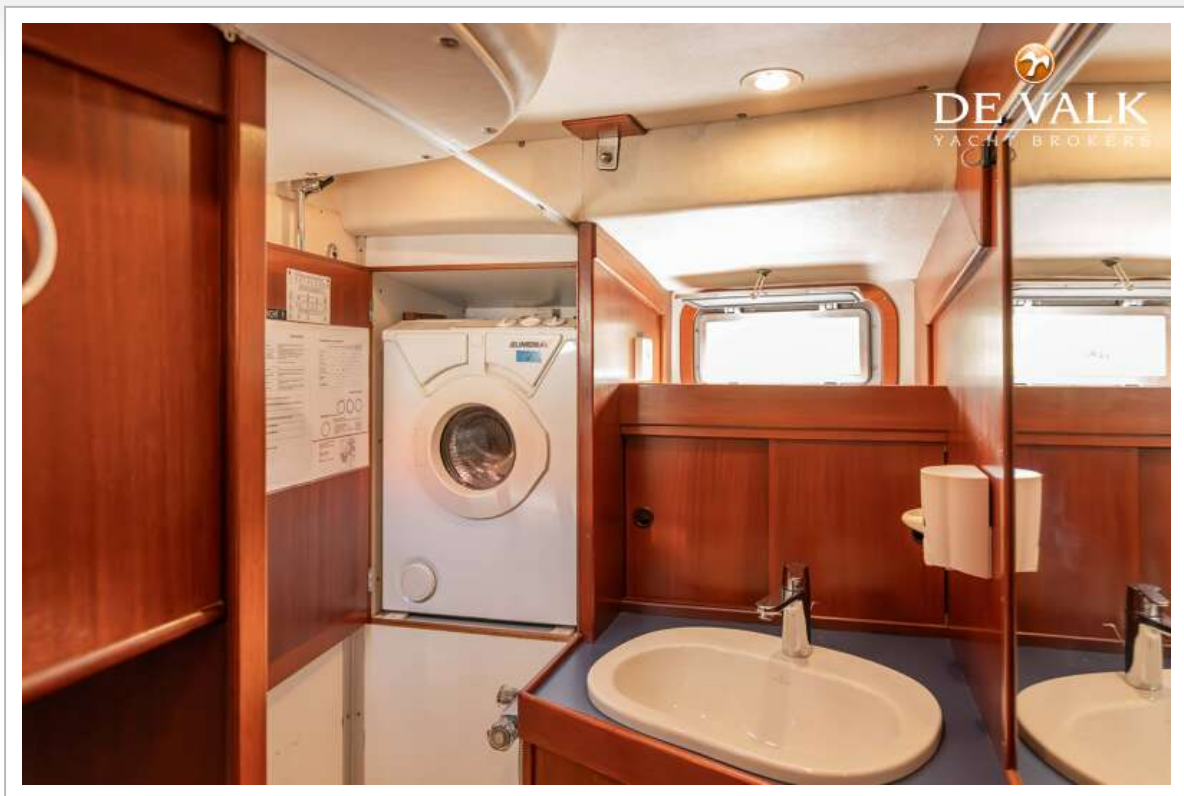
# HALLBERG RASSY 49 KETCH



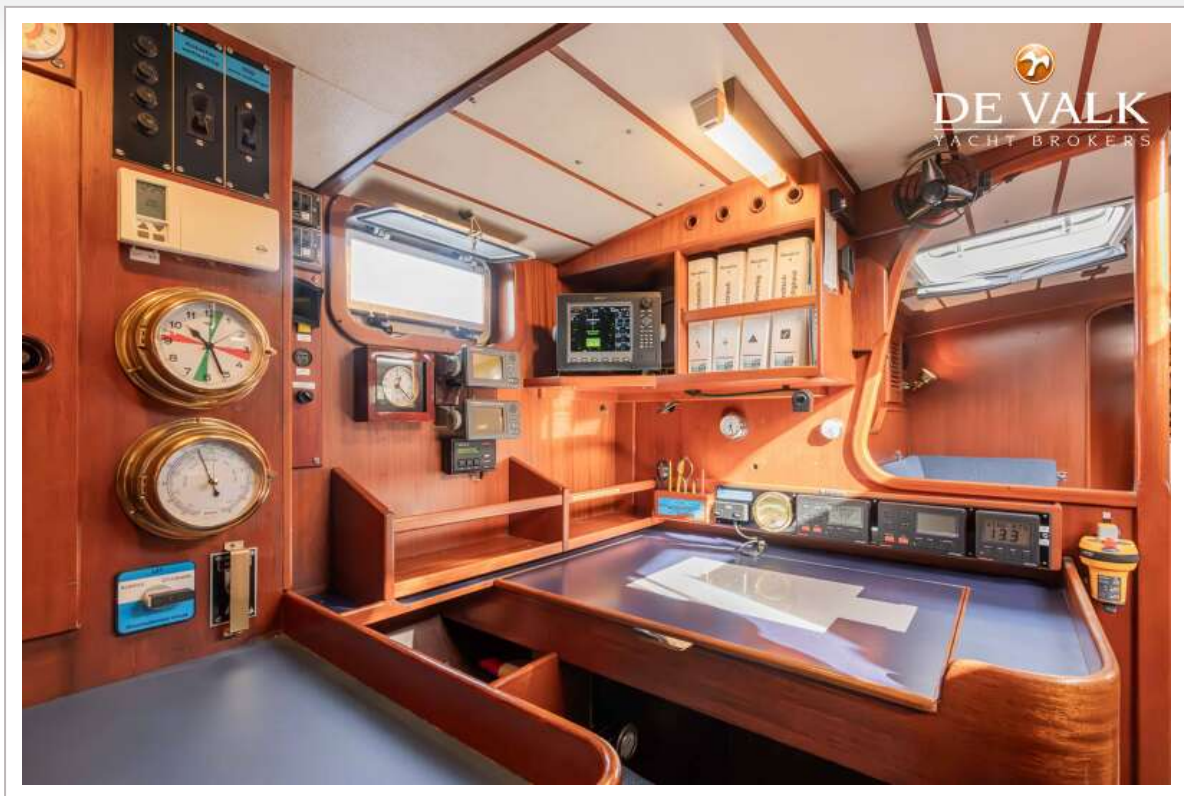
# HALLBERG RASSY 49 KETCH



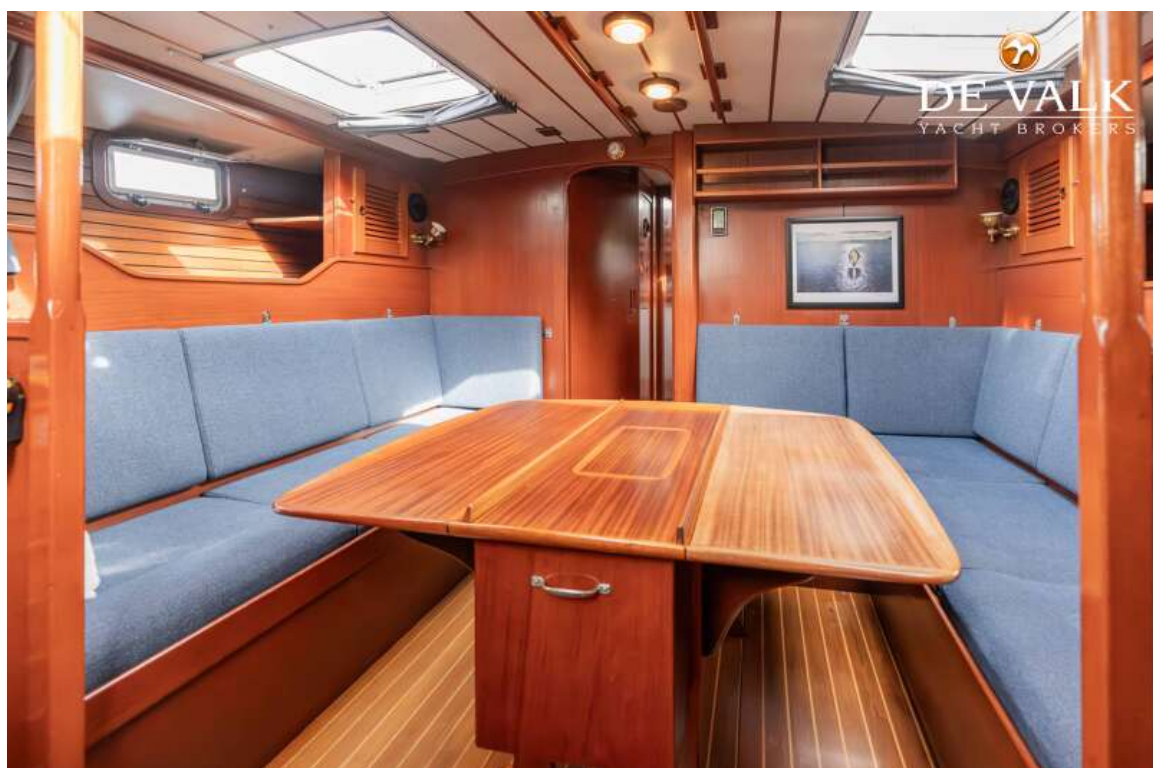
# HALLBERG RASSY 49 KETCH



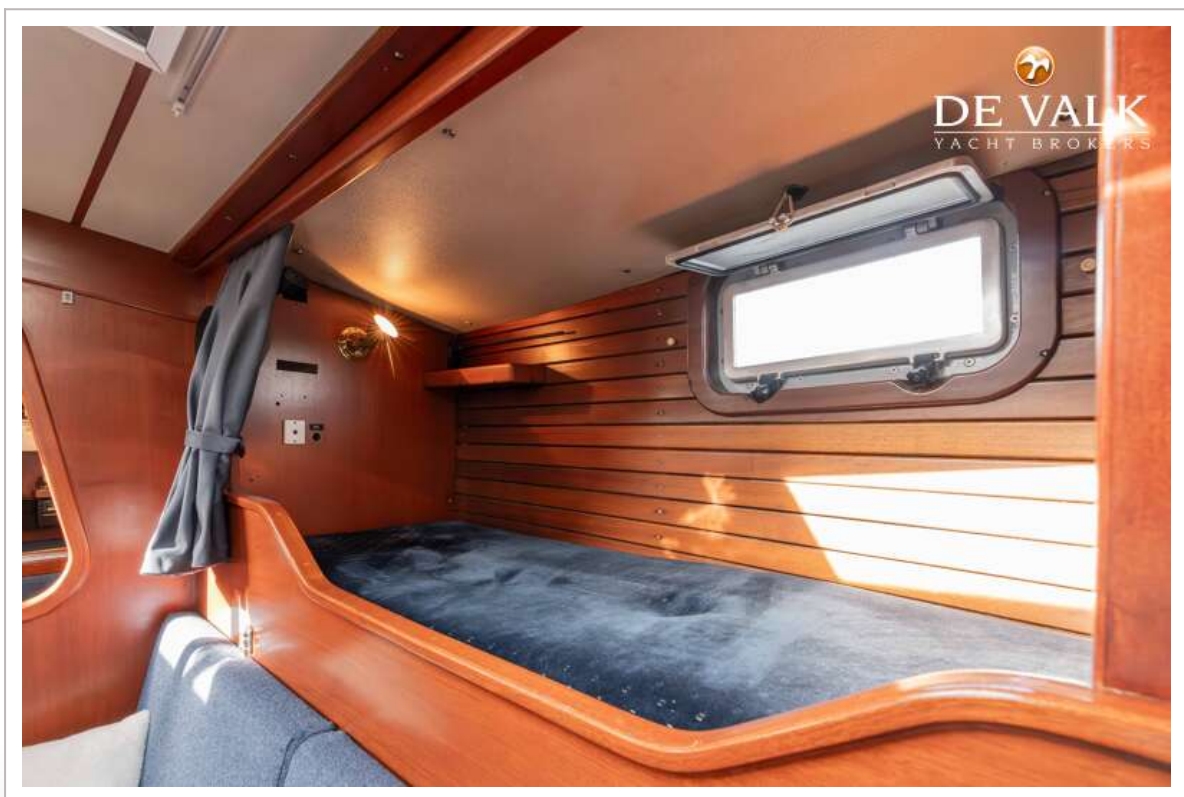
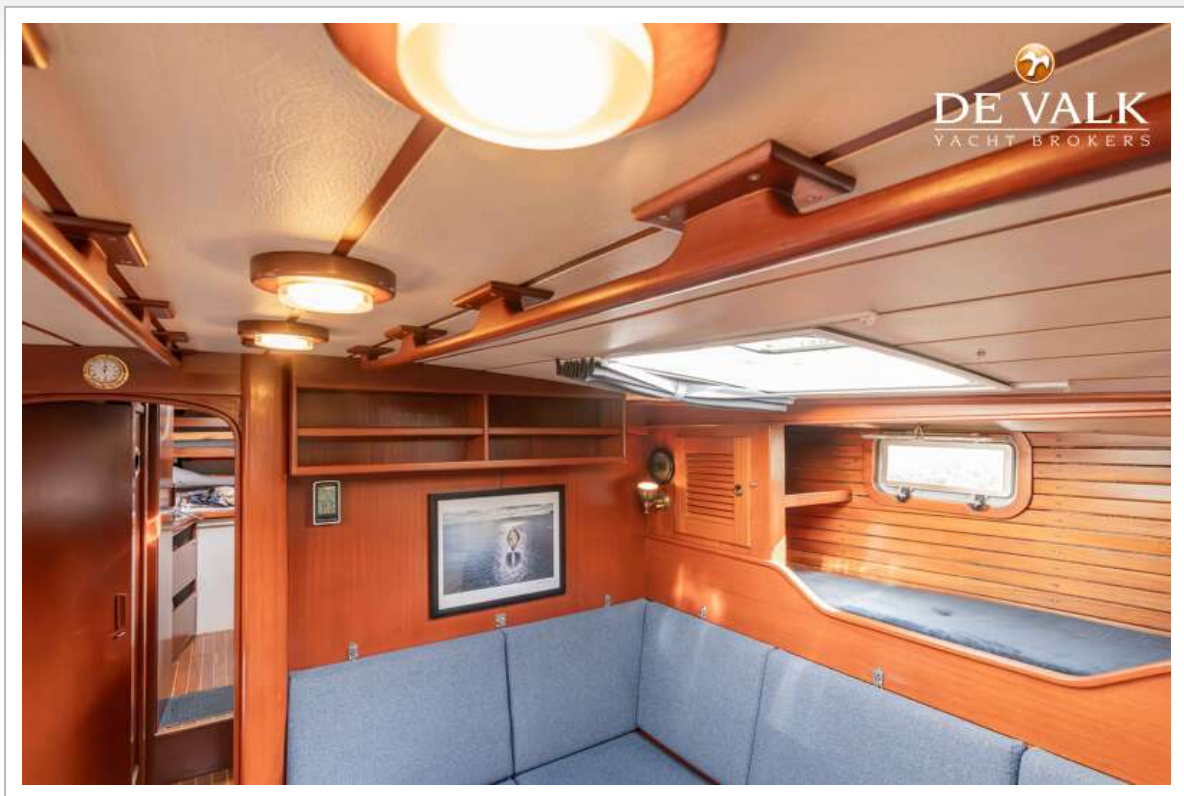
# HALLBERG RASSY 49 KETCH



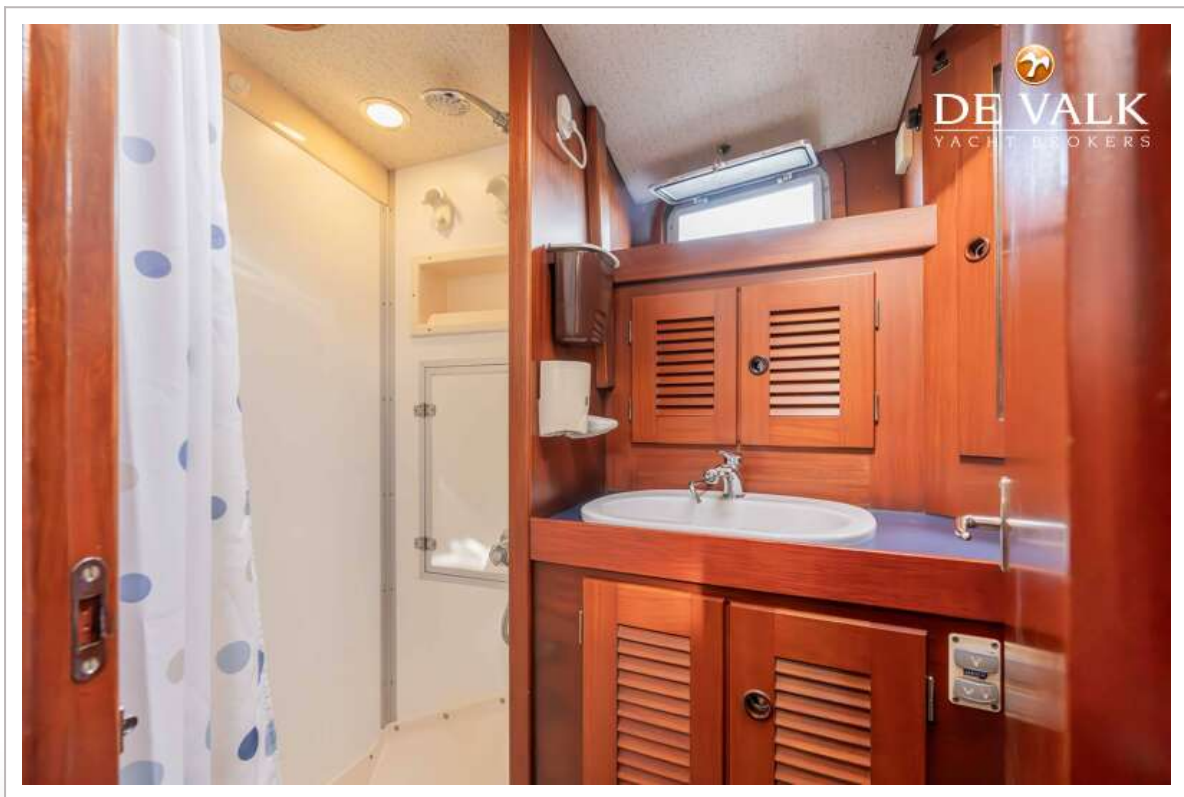
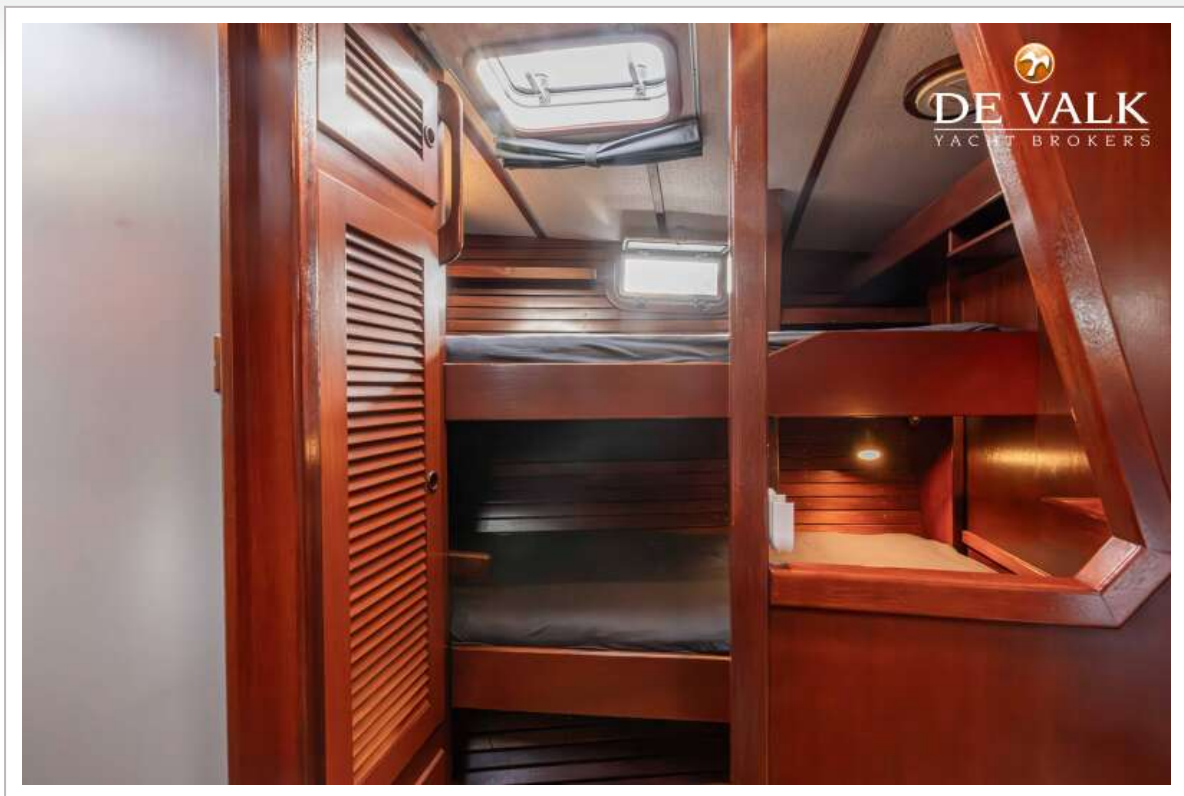
# HALLBERG RASSY 49 KETCH



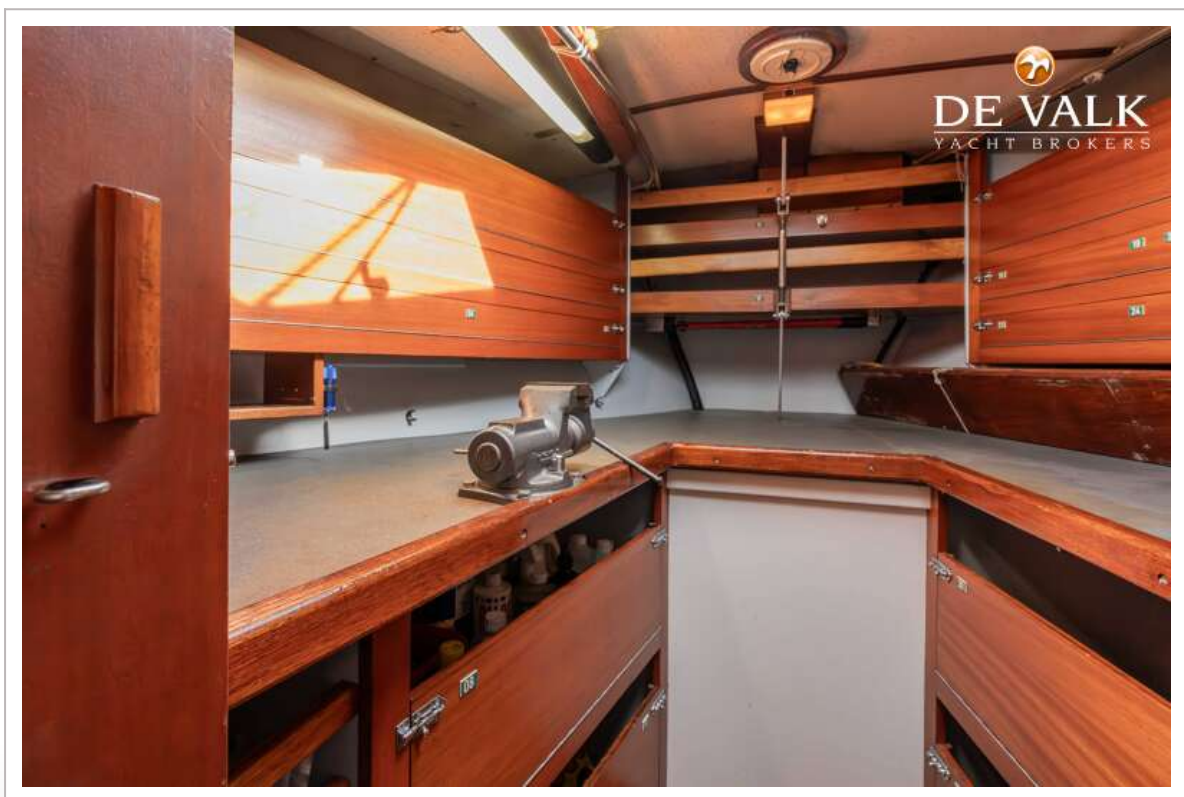
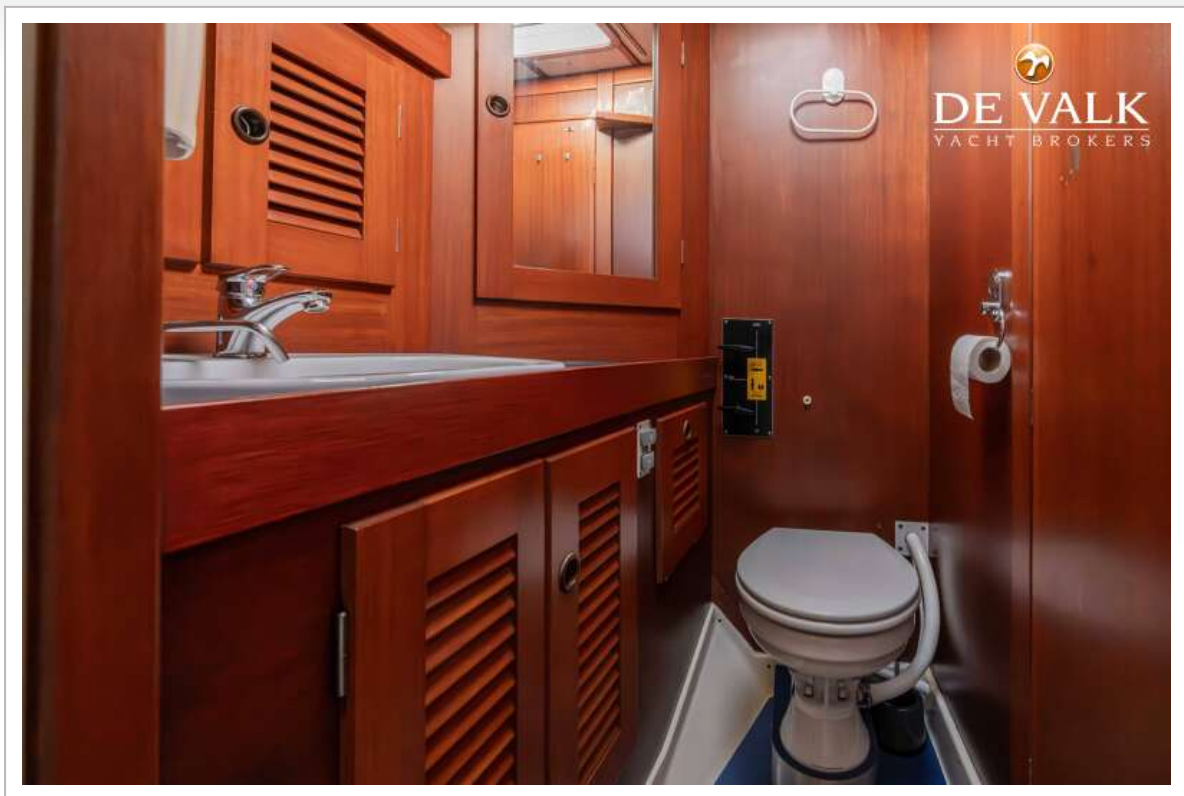
# HALLBERG RASSY 49 KETCH



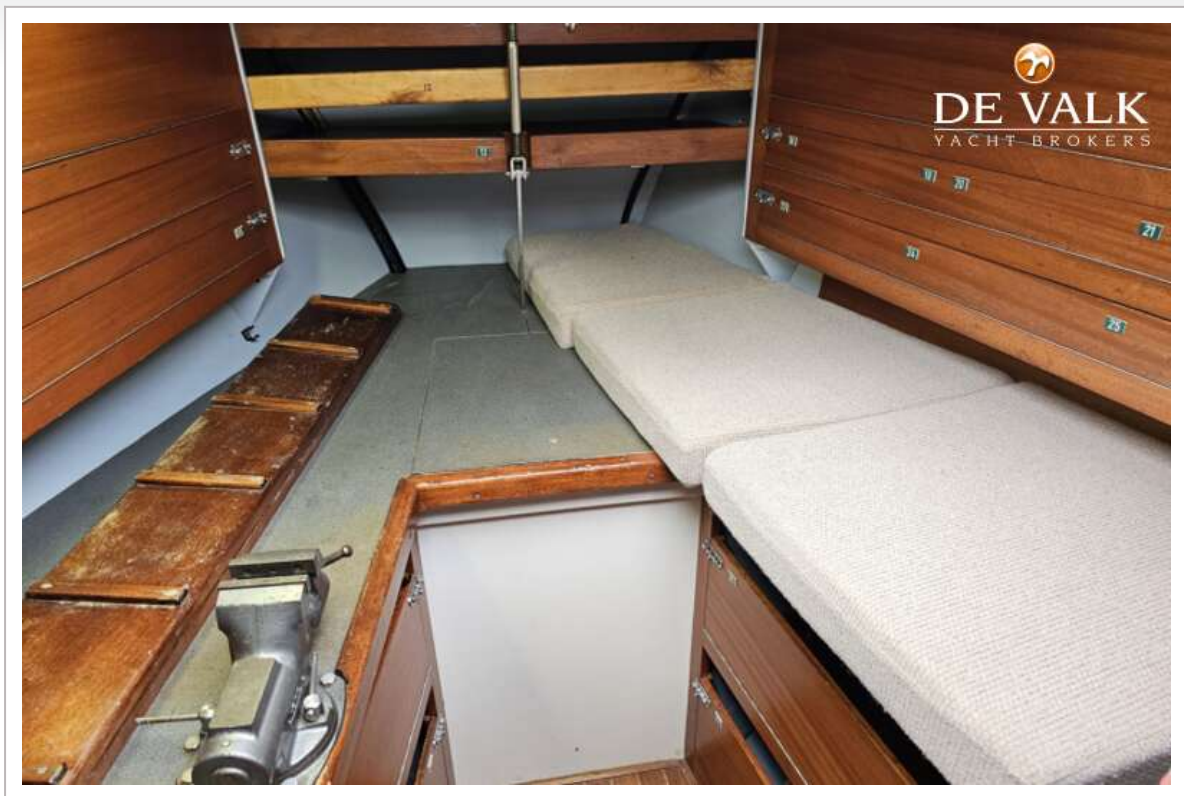
# HALLBERG RASSY 49 KETCH



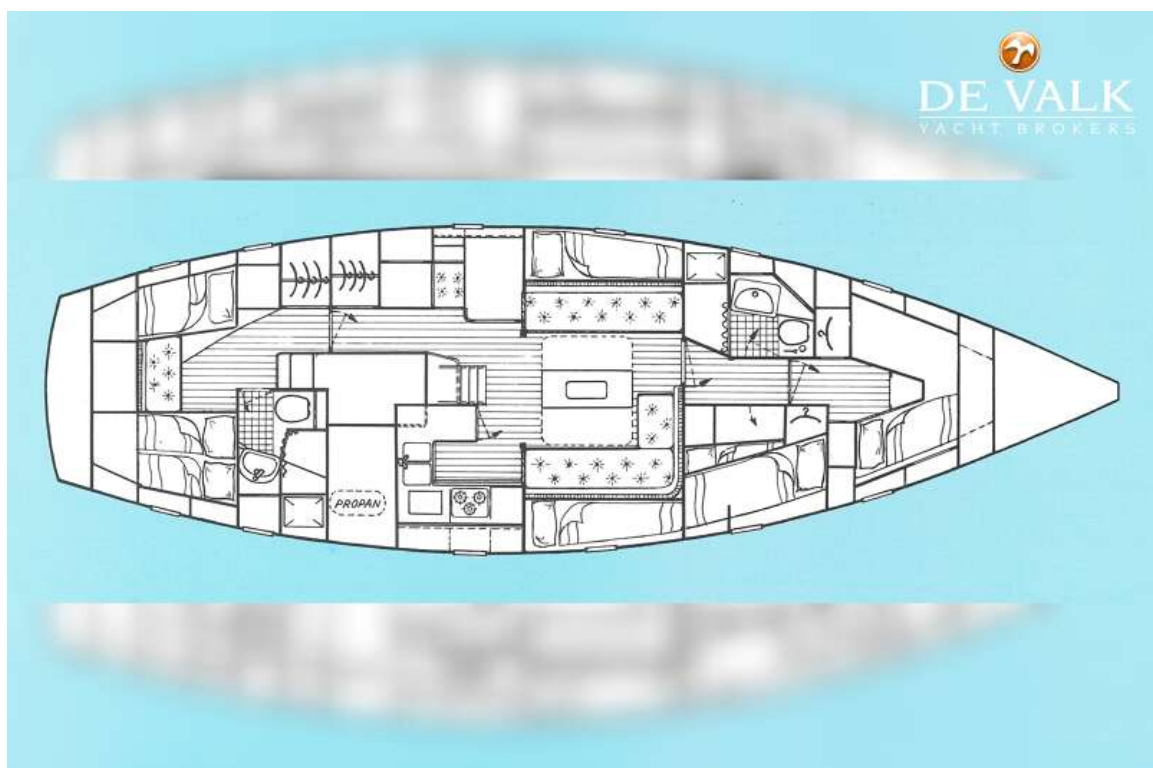
# HALLBERG RASSY 49 KETCH



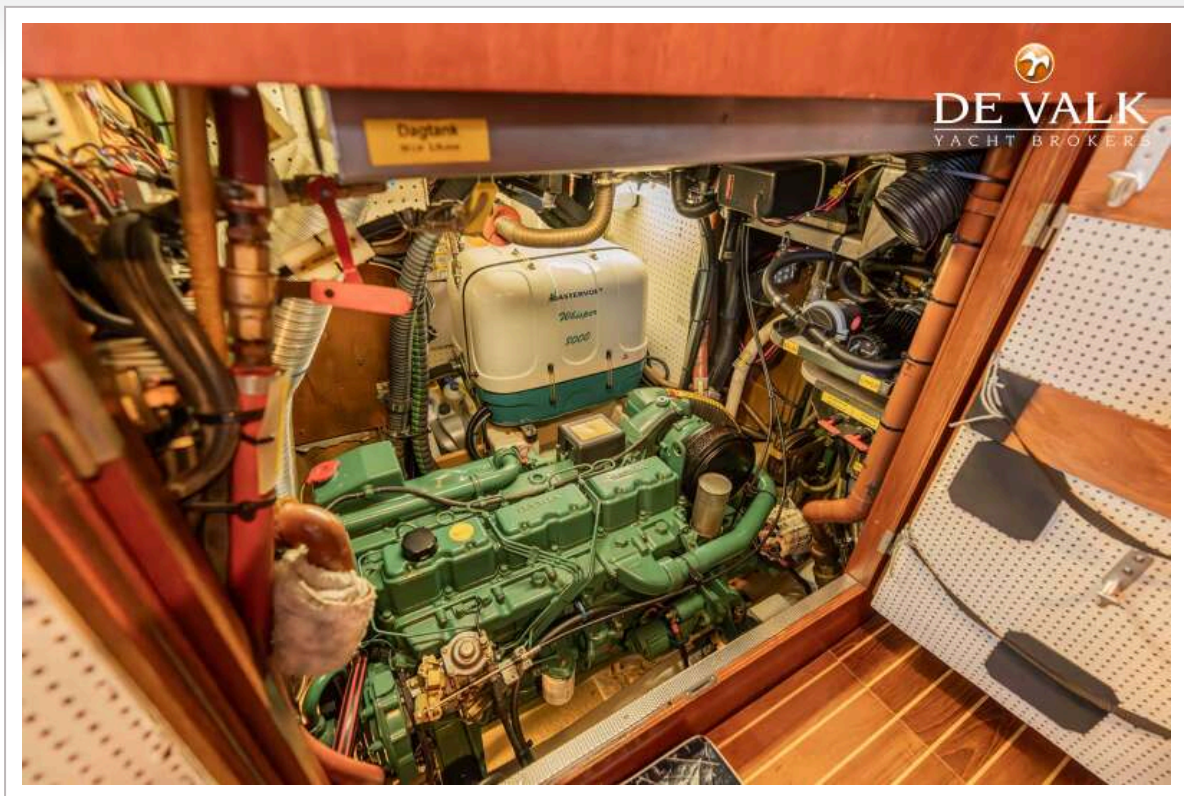
# HALLBERG RASSY 49 KETCH



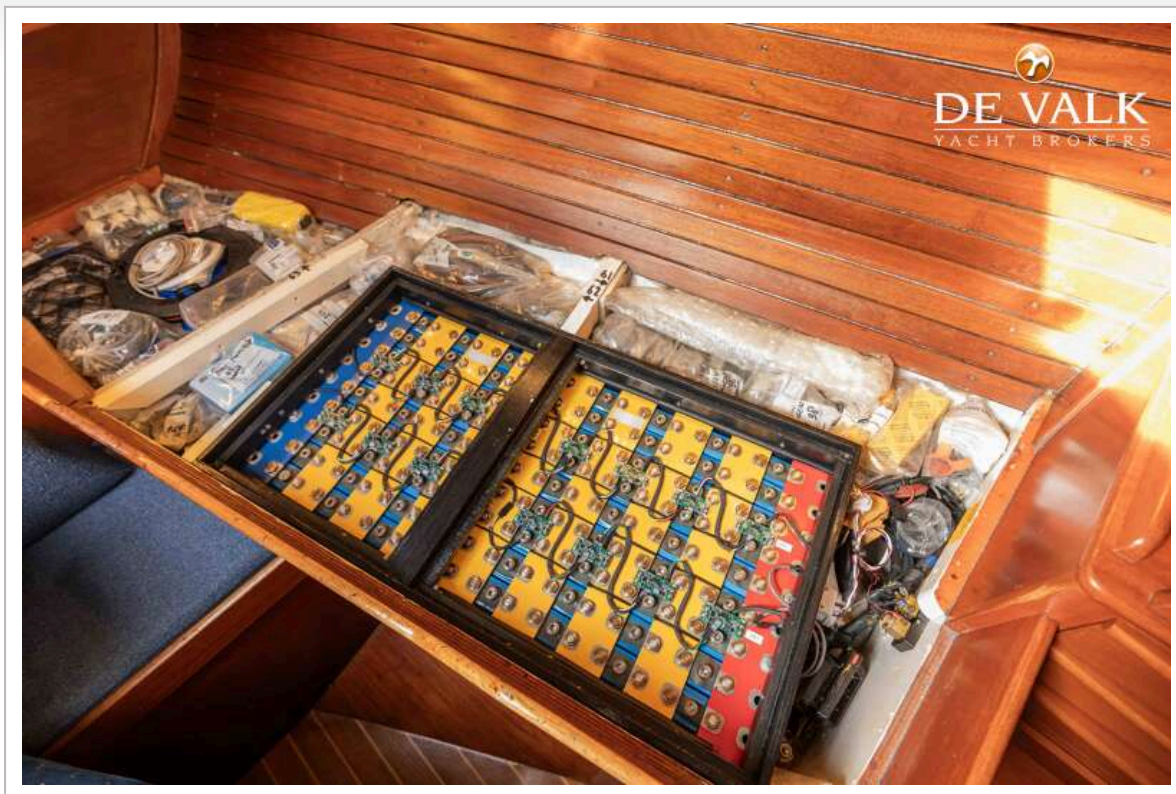
# HALLBERG RASSY 49 KETCH



# HALLBERG RASSY 49 KETCH



# HALLBERG RASSY 49 KETCH



# HALLBERG RASSY 49 KETCH

