



DE VALK
YACHT BROKERS



BENETEAU CYCLADES 50.4



DE VALK
YACHT BROKERS

BROKERAGE | CHARTER | BERTHS | FINANCE | INSURANCE | YACHT MANAGEMENT

BROKER'S COMMENTS

Family cruiser optima forma, this Beneteau 50.4 is the 4-cabin version of the immense popular Cyclades series. Inside a very neat and decent presentation, accommodation for 8, ample storage around for clothes and food. Outside, she is even to be called "stunning" with her new laid synthetic teak decks, all old antifouling removed and new epoxy treatment done 3 years ago. She comes with nice recent 2020 laminate sails. The complete standing rigging was replaced in 2019 and the running rigging was partly changed too. Excellent maintained, ready to go and a very nice yacht for family and friends.

Willem Koopmans

SPECIFICATIONS

Dimensions	15.65 x 4.90 x 2.00 (m)	Builder	Chantiers Bénéteau S.A.
Built	2006	Cabins	4
Material	GRP	Berths	8
Engine(s)	1 x Yanmar 4JH3TX1 diesel	Hp/Kw	100.00 (hp), 73.60 (kw)
Asking price	€ 149.000 (VAT Paid)	Lying	Spain

CONTACT

Sales office	De Valk Costa Blanca	Telephone	+34 96 50 21 569
Address	Costa Blanca Region 03730 Javea Alicante ES	E-mail	costablanca@devalk.nl

DISCLAIMER

These particulars are given in good faith as supplied but cannot be guaranteed.



BENETEAU CYCLADES 50.4

GENERAL

Model	BENETEAU CYCLADES 50.4
Type	sailing yacht
LOA (m)	15,65
LWL (m)	13,18
Beam (m)	4,90
Draft (m)	2,00
Air draft (m)	23,00
Headroom (m)	2,00
Year built	2006
Launched	2006
Builder	Chantiers Bénéteau S.A.
Country	France
Designer	Berret-Racoupeau.
Displacement (t)	13
Ballast (tonnes)	3,950
CE norm	A
Hull material	GRP
Hull colour	off-white
Hull shape	round-bilged
Keel type	fin keel
Bilge keels	yes
Superstructure material	GRP
Rubbing strake	yes
Deck material	GRP
Deck finish	synthetic teak New 2018
Superstructure deck finish	synthetic teak New 2019
Cockpit deck finish	synthetic teak New 2018
Antifouling (year)	2021 all antifouling removed and new epoxy layers May 2025
Dorades	yes
Window frame	aluminium



BENETEAU CYCLADES 50.4

Window material	polycarbonate
Deckhatch	yes
Fuel tank (litre)	polyethylene 400
Level indicator (fuel tank)	yes
Freshwater tank (litre)	polyethylene 900, approx.
Level indicator (freshwater)	yes
Blackwater tank (litre)	yes
Wheel steering	cable steering Double
Emergency tiller	yes
More info on hull	Small scratch/dent at midship port side rail
Extra info	With the new deck and nice GRP structure she looks stunning
Extra info	New anodes May 2025

ACCOMMODATION

Cabins	4
Berths	8
Interior	cherry
Floor	teak and holly
Saloon	yes
Headroom saloon (m)	2
Chart table	yes
Aft Cabin	Double
Dinette	yes
Dinette to convert into berth	With different poles and extra cushion, not included
Galley	yes
Countertop	plastic White
Sink	stainless steel Double
Cooker	calor gas 3 burner
Oven	Emwell
Microwave	Nodor
Fridge	2x



Hot water system	Boiler
Water pressure system	electrical
Manual and/or foot pump	yes
Owners cabin	double bed
Bed length (m)	2
Wardrobe	hanging and shelves
Bathroom	en suite
Toilet	en suite
Toilet system	manual
Wash basin	in the bathroom
Shower	en suite
Guest cabin 1	double bed
Bed length (m)	2
Wardrobe	hanging and shelves
Bathroom	en suite
Toilet	en suite
Toilet system	manual
Wash basin	in the bathroom
Shower	en suite
Guest cabin 2	double bed
Bed length (m)	2
Wardrobe	hanging and shelves
Bathroom	en suite
Toilet	en suite
Toilet system	manual
Wash basin	in the bathroom
Shower	en suite
Guest cabin 3	double bed
Bed length (m)	2
Wardrobe	hanging and shelves
Bathroom	en suite
Toilet	en suite



Toilet system	manual
Wash basin	in the bathroom
Shower	en suite

MACHINERY

No of engines	1
Make	Yanmar
Type	4JH3TX1
HP	100
kW	73.60
Fuel	diesel
Year installed	2007
Maximum speed (kn)	9,5
Cruising speed (kn)	7
Consumption (l/hr)	4
Range (nm)	650
Engine hours	4000, approx.
Engine cooling system	freshwater heat exchanger
Drive	shaft
Engine controls	bowden cable
Gearbox	mechanical
Bowthruster	electric Maxpower
Propeller type	fixed
Propeller blades	3
Propeller shaft material	stainless steel
Shaft lubrication	water
Manual bilge pump	yes
Electric bilge pump	yes
Electrical installation	12/228
Generator	EFOY methanol fuel cells
Batteries	7x



BENETEAU CYCLADES 50.4

Start battery	1x
Service battery	5x
Bowthruster battery	yes
Battery charger	yes
Shorepower	yes
Extra info	Instrument panel needs check for rpm and engine hours
Extra info	Last engine service early Summer 2024, will be done again 2025

NAVIGATION

Compass	2x
Electric compass	On pilot
Depth sounder/log	Raymarine ST60, Tridata
Windset	Raymarine ST60+
VHF	Radio Ocean RO4700, micro cable slightly damaged
Autopilot	Raymarine ST6002
Rudder angle indicator	On pilot
Radar	Display is defect
Plotter/GPS	Raymarine C80 defect
EPIRB	Needs battery data check
Navigation lights	yes

EQUIPMENT

Sprayhood	In good condition
Bimini	In good condition
Cockpit cushions	yes
Cockpit table	yes
Bathing platform	yes
Boarding ladder	stainless steel
Gangway	yes
Deck shower	yes
Anchor	CQR Plough



Anchor chain	12 mm, 70 mtr, new 2019
Windlass	New ca. 2019
Dinghy	Plastimo, new 2023
Outboard	Suzuki 6 hp, new 2020
Outboard support	yes
Davits	Plus support on foredeck for dinghy
Davits controls	manual
Sea railing	yes
Grab rail (superstructure)	yes
Life raft	New 2019
Last life raft survey	Needs service check
Lifejackets	yes
Fenders	yes
Mooring lines	yes
TV	yes
Radio-cd player	Kenwood
Cockpit speakers	yes
Speakers in salon	yes

RIGGING

Rigging	sloop Masthead sloop
Standing rigging	wire Replaced 2018, invoice available
Brand mast	Z-Spar
Material mast	aluminium
Spreaders	3x
Mainsail	Far East 2020 laminate in mast
Stoway mast	yes
Genoa	Far East 2020 laminate
Genoa furler	yes
Gennaker	With condom
Boomvang	gasspring Selden



Primary sheet winch

Harken 2 speed manual 53

Multifunctional winches

Harken 2 speed manual 44

Extra info

Plus set Dacron sails



BENETEAU CYCLADES 50.4



BENETEAU CYCLADES 50.4



BENETEAU CYCLADES 50.4



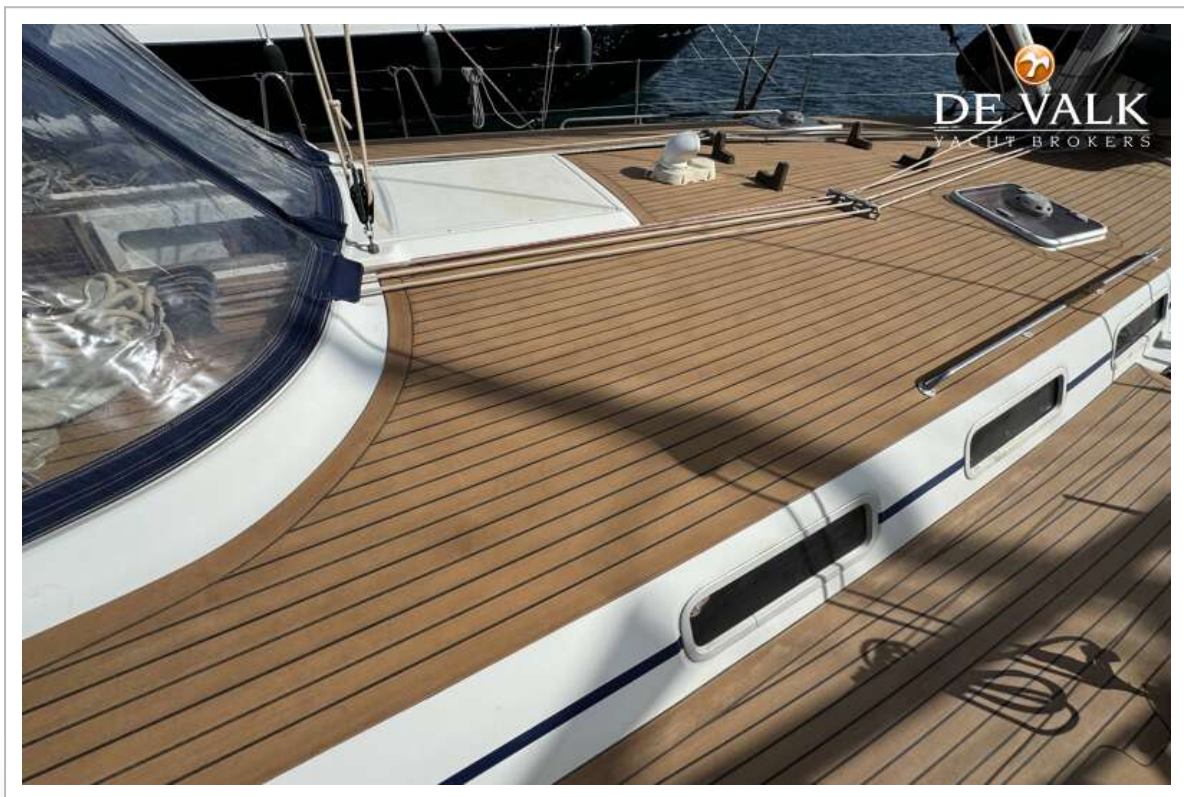
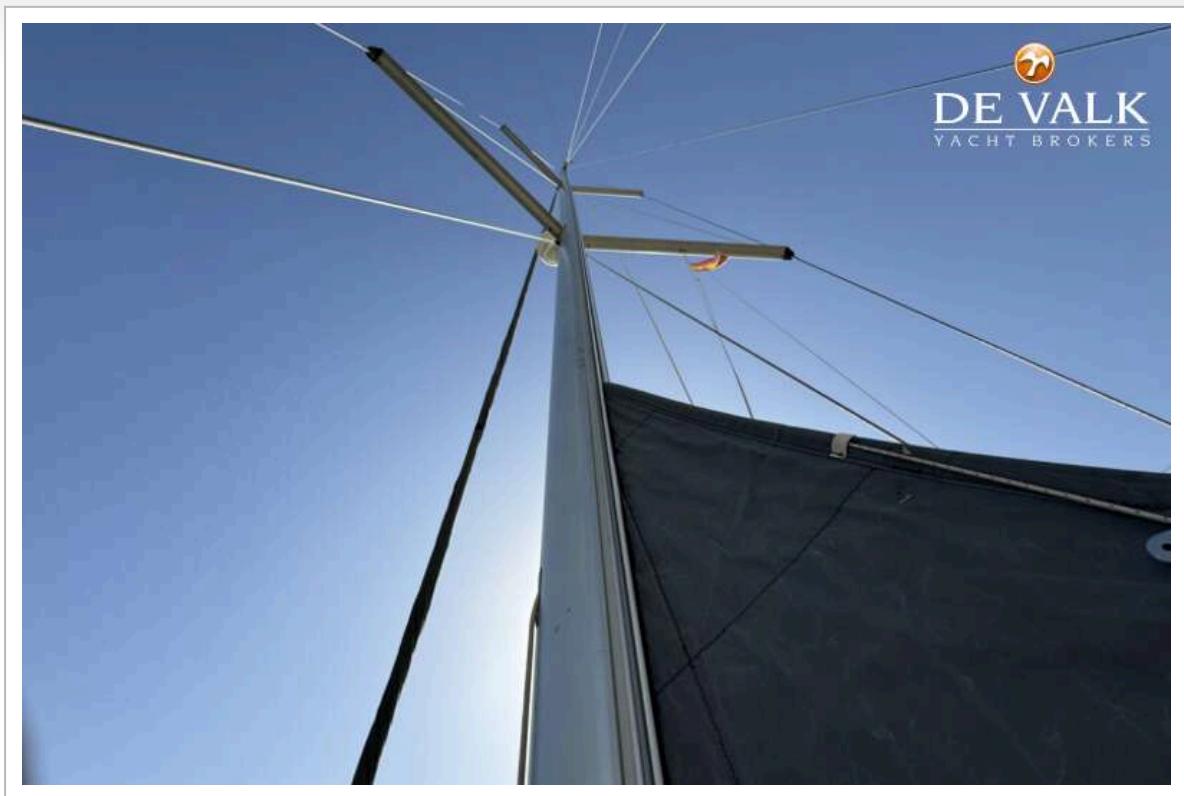
BENETEAU CYCLADES 50.4



BENETEAU CYCLADES 50.4



BENETEAU CYCLADES 50.4



BENETEAU CYCLADES 50.4



BENETEAU CYCLADES 50.4



BENETEAU CYCLADES 50.4



BENETEAU CYCLADES 50.4



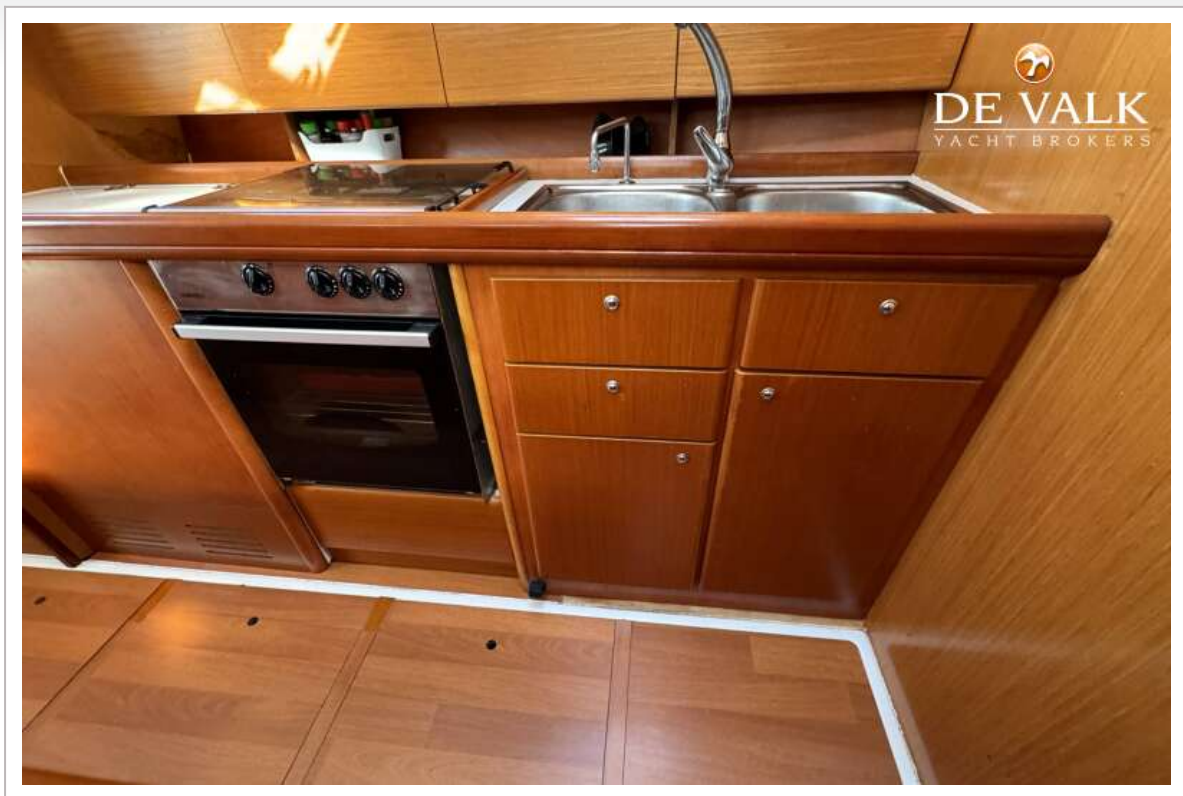
BENETEAU CYCLADES 50.4



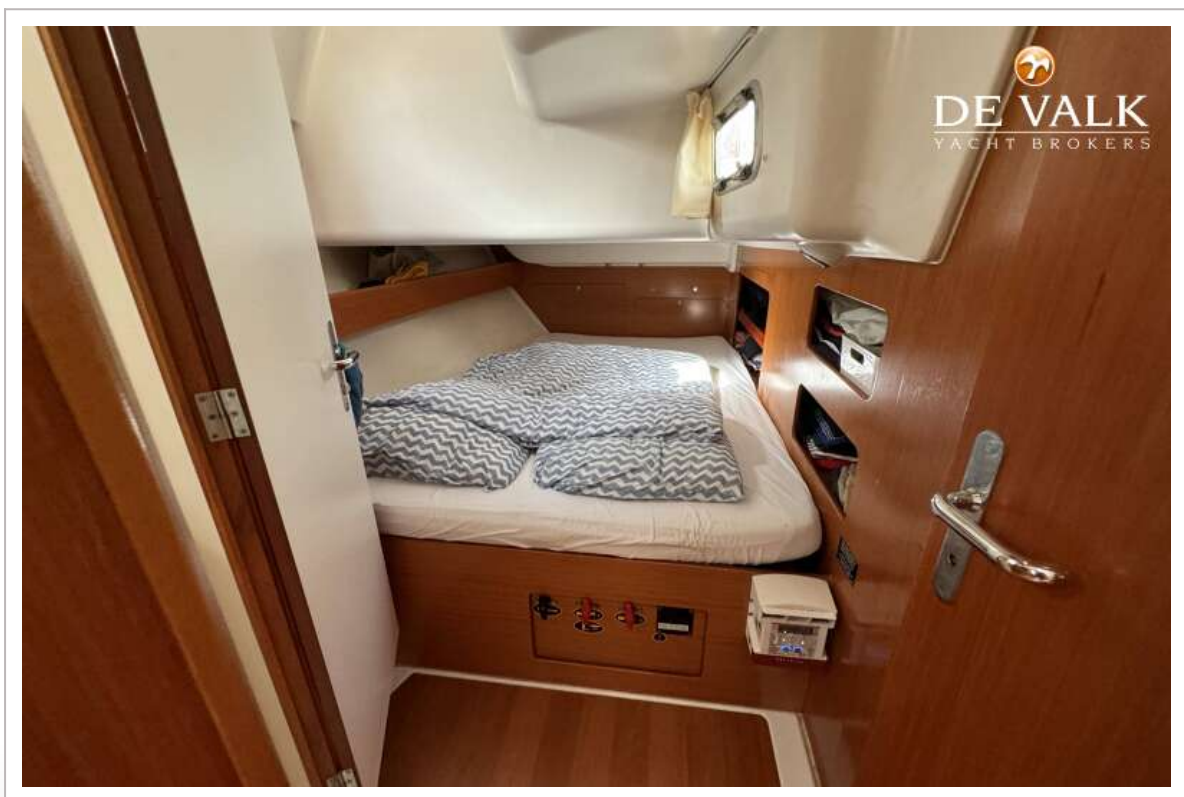
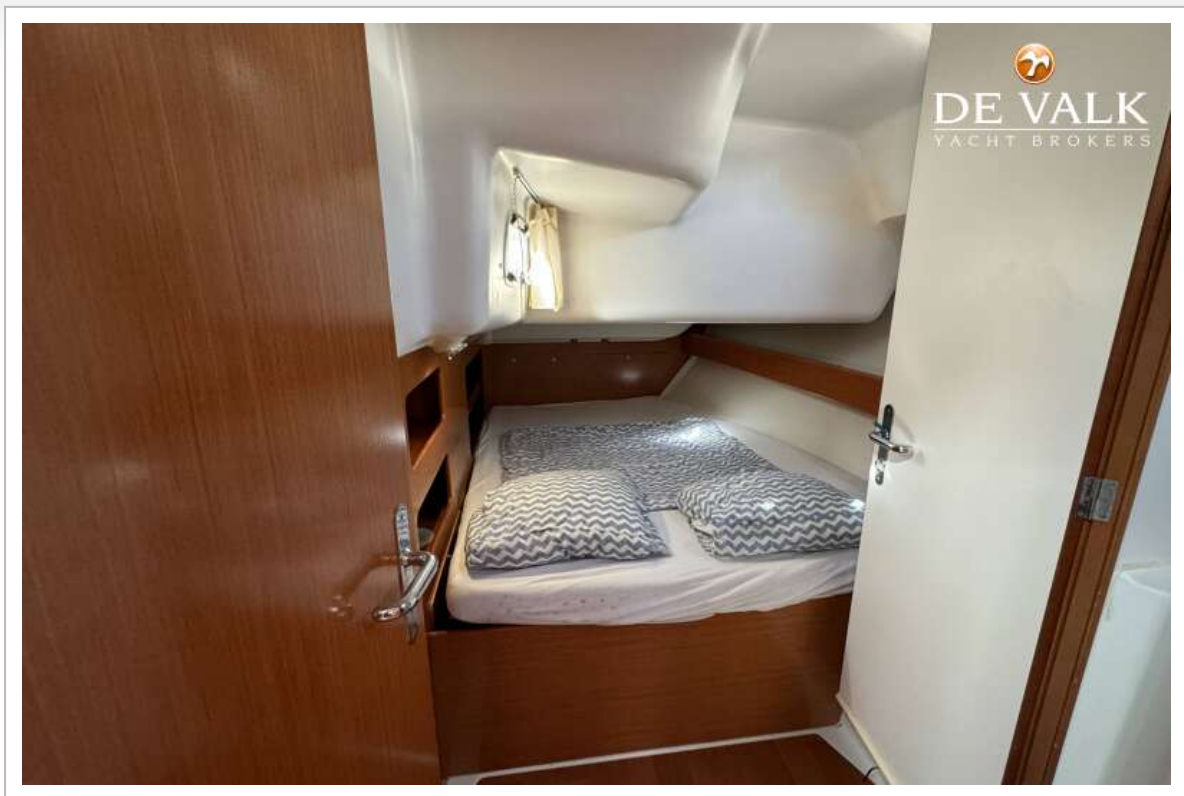
BENETEAU CYCLADES 50.4



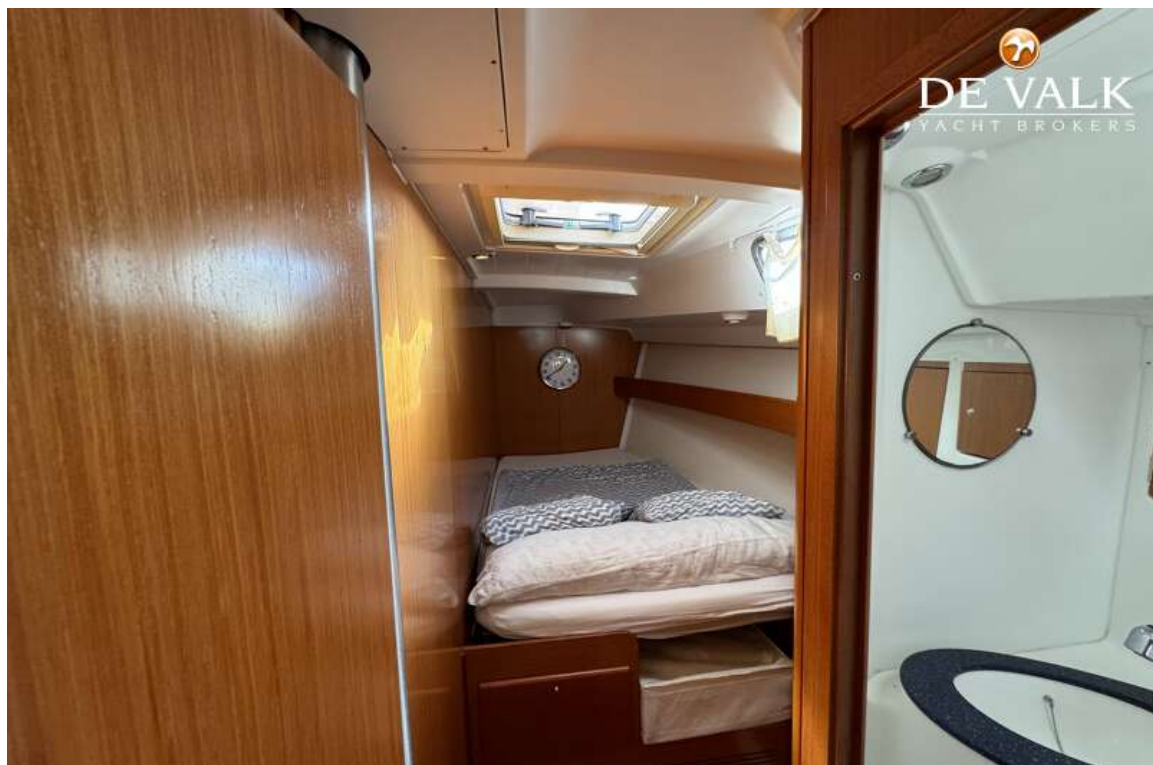
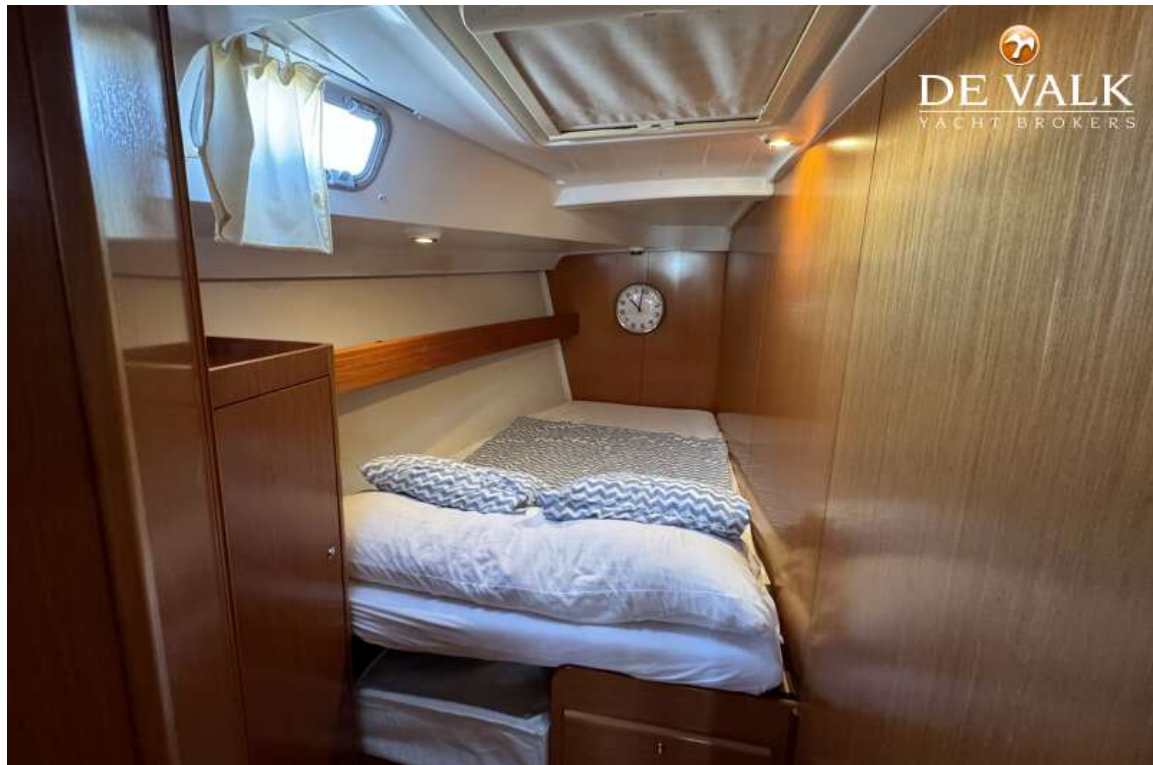
BENETEAU CYCLADES 50.4



BENETEAU CYCLADES 50.4



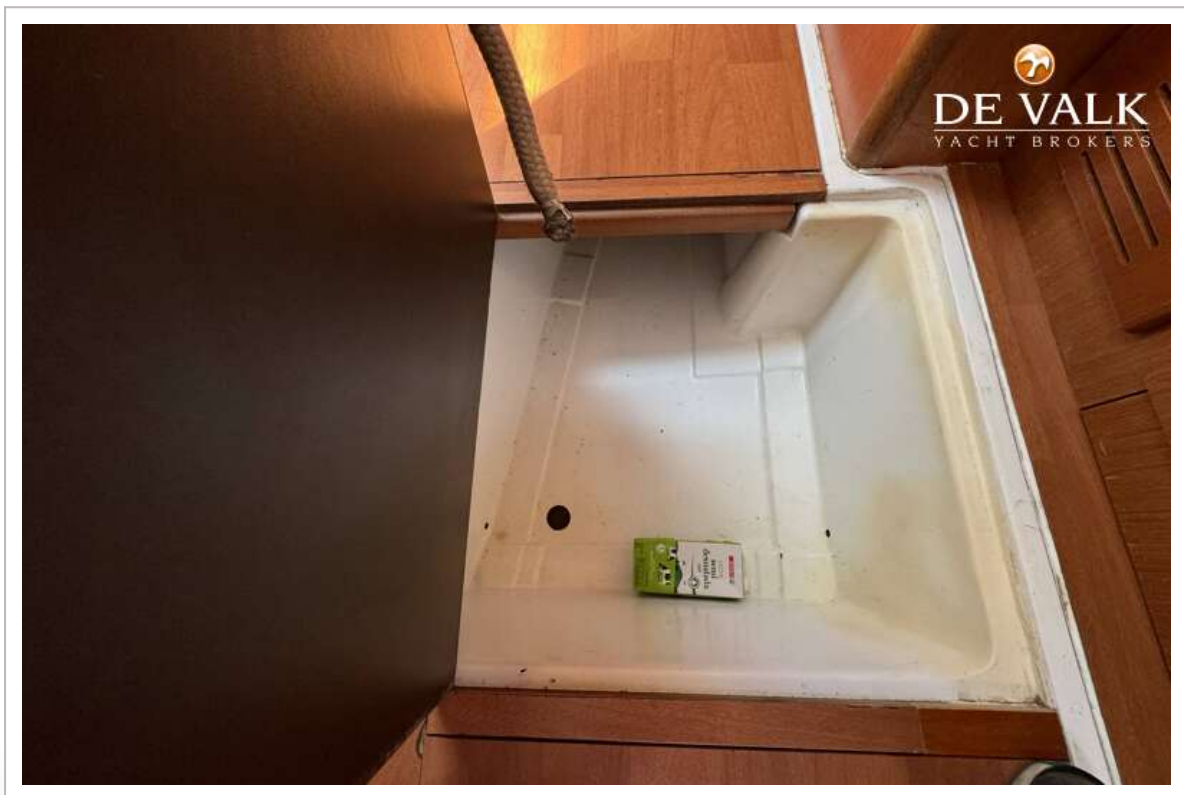
BENETEAU CYCLADES 50.4



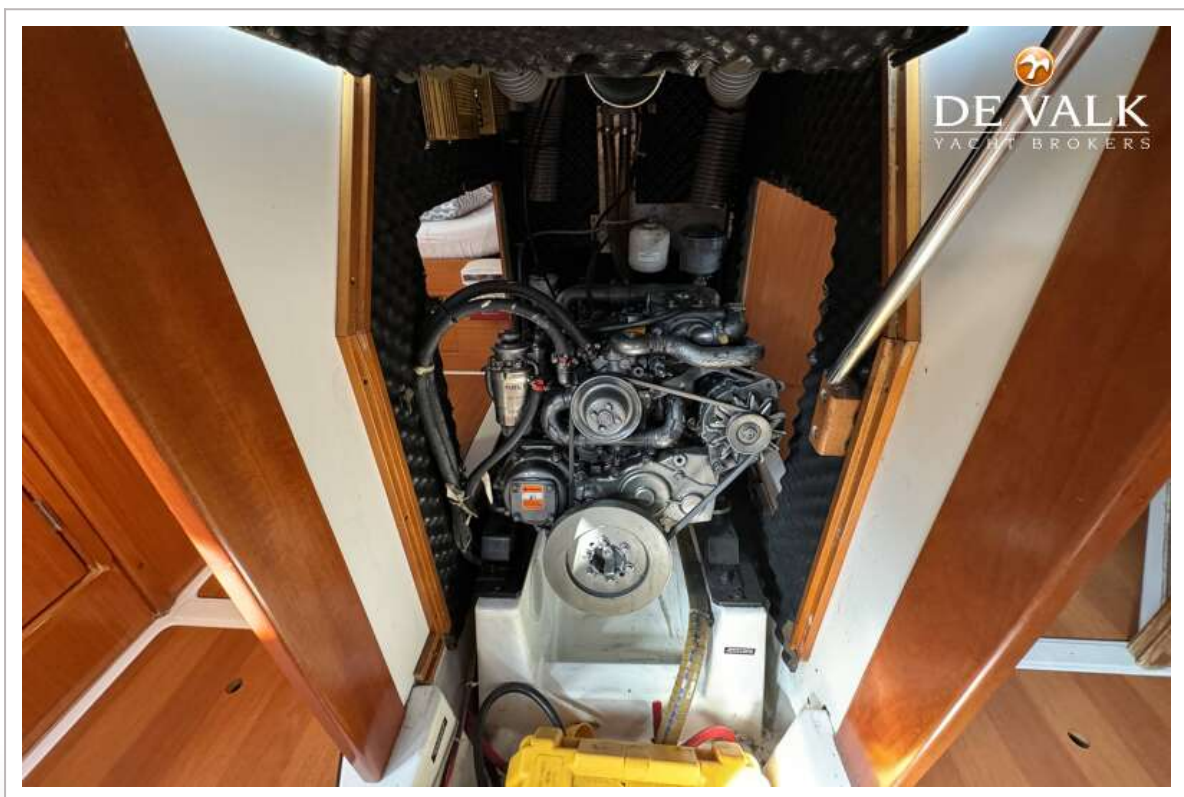
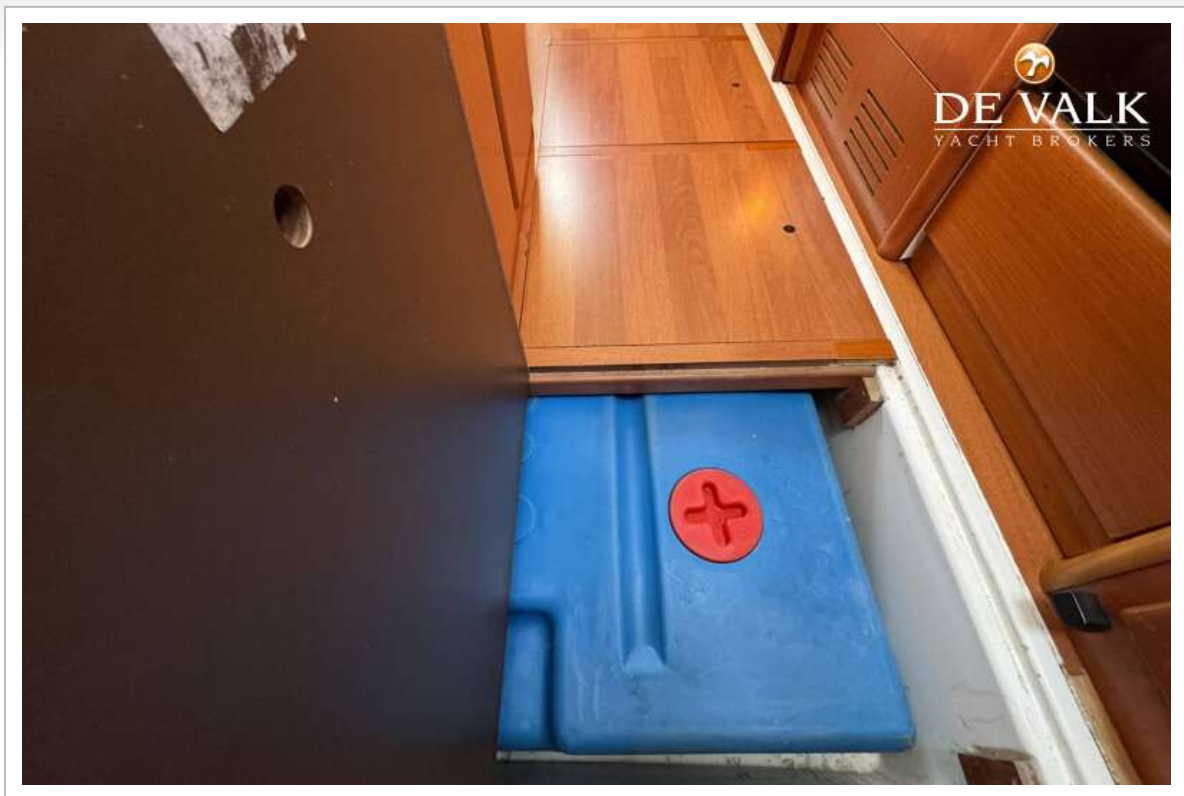
BENETEAU CYCLADES 50.4



BENETEAU CYCLADES 50.4



BENETEAU CYCLADES 50.4



BENETEAU CYCLADES 50.4

