



TRINTELLA 52C



DE VALK
YACHT BROKERS

BROKER'S COMMENTS

Dutch yacht designed by Peltzer/van Dijk and built by the Trintella shipyard in 1999. The lifting keel & the carbon fibre hull make the difference. A fast & very well maintained yacht in top condition that is well worth buying..

Sofia Iliia-Salvanou

SPECIFICATIONS

Dimensions	16.00 x 4.66 x 1.90 (m)	Builder	TRINTELLA SHIPYARD
Built	1999	Cabins	3
Material	Carbon Fibre	Berths	6
Engine(s)	1 x VOLVO PENTA MD22L diesel	Hp/Kw	50.00 (hp), 36.80 (kw)
Asking price	€ 195.000 (VAT Paid)	Lying	elsewhere / Not at sales office

CONTACT

Sales office	De Valk Corfu	Telephone	(+30) 266 111 8095
Address	New Port of Corfu, near Gouvia Marina 490 83 Corfu GR	E-mail	corfu@devalk.nl

DISCLAIMER

These particulars are given in good faith as supplied but cannot be guaranteed.



TRINTELLA 52C

GENERAL

Model	TRINTELLA 52C
Type	sailing yacht
LOA (m)	16,00
LWL (m)	14,80
Beam (m)	4,66
Draft (m)	1,90
Headroom (m)	1,90
Year built	1999
Builder	TRINTELLA SHIPYARD
Country	The Netherlands
Designer	Peltzer/van Dijk Yacht Design
Displacement (t)	17
Ballast (tonnes)	5,3
CE norm	A
Hull material	carbon fibre
Hull colour	white
Keel type	lifting keel
Superstructure material	carbon fibre
Deck material	carbon fibre
Deck finish	teak
Superstructure deck finish	teak
Cockpit deck finish	teak
Antifouling (year)	2024
Window frame	mahogany
Window material	glass
Deckhatch	Plexiglass
Portholes	aluminium
Insulation	foam
Radar arch	non collapsible
Fuel tank (litre)	stainless steel 2 x 200 =400 total INOX



Level indicator (fuel tank)	yes
Freshwater tank (litre)	2 X 300 = 600 TOTAL
Level indicator (freshwater)	yes
Blackwater tank (litre)	stainless steel 2 X 75 =150 TOTAL INOX
Level indicator (blackwater)	yes
Wheel steering	cable steering HYDRAULIC
Emergency tiller	yes
More info on hull	Carbon reinforced GFK

ACCOMMODATION

Cabins	3
Berths	6
Interior	pearwood
Deck saloon	yes
Pilot house/deck saloon	yes
Heating	diesel ducted hot air
Navigation center	yes
Chart table	yes
Aft Cabin	yes
Dining room	yes
Opening door to cockpit	yes
Sliding door to aft deck	yes
Galley	yes
Countertop	plastic
Sink	stainless steel
Cooker	electric CERAMIC
Oven	yes
Microwave	yes
Fridge	yes
Freezer	yes
Hot water system	220V + engine



Water pressure system	electrical
Coffee maker	yes
Owners cabin	double bed
Wardrobe	hanging/drawers/shelves
Bathroom	en suite
Toilet	en suite
Toilet system	electric
Wash basin	in the bathroom
Shower	en suite
Guest cabin 1	French bed
Wardrobe	hanging/drawers/shelves
Bathroom	shared
Toilet	shared
Toilet system	electric
Wash basin	in the bathroom
Shower	shared
Bath tub	shared
Guest cabin 2	bunk bed

MACHINERY

No of engines	1
Make	VOLVO PENTA
Type	MD22L
HP	50
kW	36.80
Fuel	diesel
Year installed	1999
Maximum speed (kn)	8
Consumption (l/hr)	4
Engine hours	1200
Engine cooling system	seawater



Drive	sail-drive
Engine controls	electrical & bowden cable
Gearbox	mechanical
Bowthruster	electric
Manual bilge pump	yes
Electric bilge pump	yes
Generator	wet exhaust
Batteries	6
Start battery	1
Service battery	4
Auto positioning system	1 BATTERY

NAVIGATION

Compass	yes
Electric compass	yes
Depth sounder	yes
Windset	yes
Autopilot	yes
GPS	yes
Plotter	yes
Radar/plotter	yes
Radio receiver	yes
Navigation lights	yes

EQUIPMENT

Sprayhood	yes
Bimini	yes
Winter cover	yes
Bathing platform	yes
Boarding ladder	yes
Anchor	Danforth



Anchor chain	70 M INOX
Windlass	electrical LEWMAR
Deck wash	yes
Dinghy	inflatable
Davits	stainless steel
Sea railing	stainless steel
Grab rail (superstructure)	stainless steel
Railing side opening gates	yes
Life raft	container
Last life raft survey	yes
Lifejackets	yes
Lifebuoy	yes
Binocular	yes
Fenders	yes
Spare parts	yes
TV	yes
Radio-cd player	yes
Fire extinguisher	yes

RIGGING

Standing rigging	Rod
Material mast	aluminium coated
Mainsail	yes
Mainsail cover	yes
Furling boom	CARBON
Spinnaker	yes
Self tacking jib installation	yes
Reefing System	main in-boom furling
Backstay adjuster	hydraulic NAVTEC
Boomvang	hydraulic NAVTEC
Primary sheet winch	yes



Secondary sheet winch	yes
Genoa sheetwinches	yes
Halyard winches	yes
Spinnaker winch	yes
Reefing winch	yes
Multifunctional winches	yes
Gennaker pole	carbon



TRINTELLA 52C



TRINTELLA 52C



TRINTELLA 52C



TRINTELLA 52C



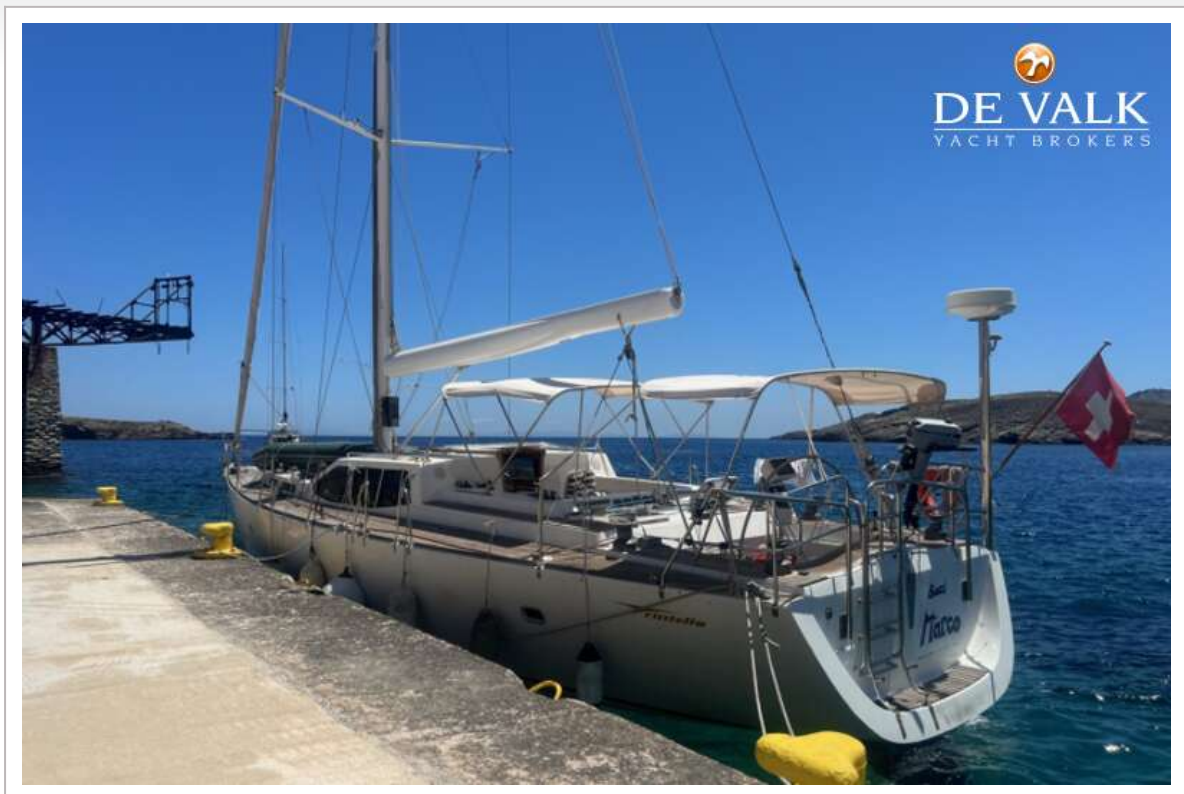
TRINTELLA 52C



TRINTELLA 52C



TRINTELLA 52C



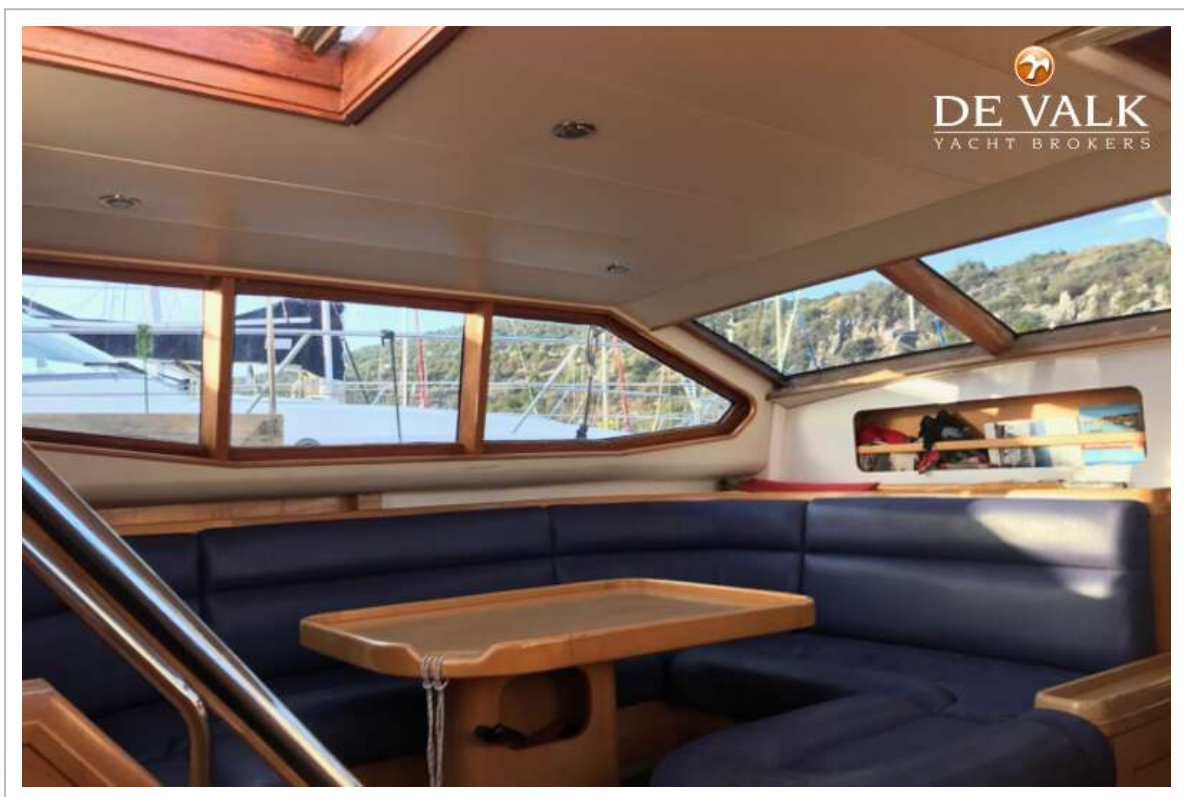
TRINTELLA 52C



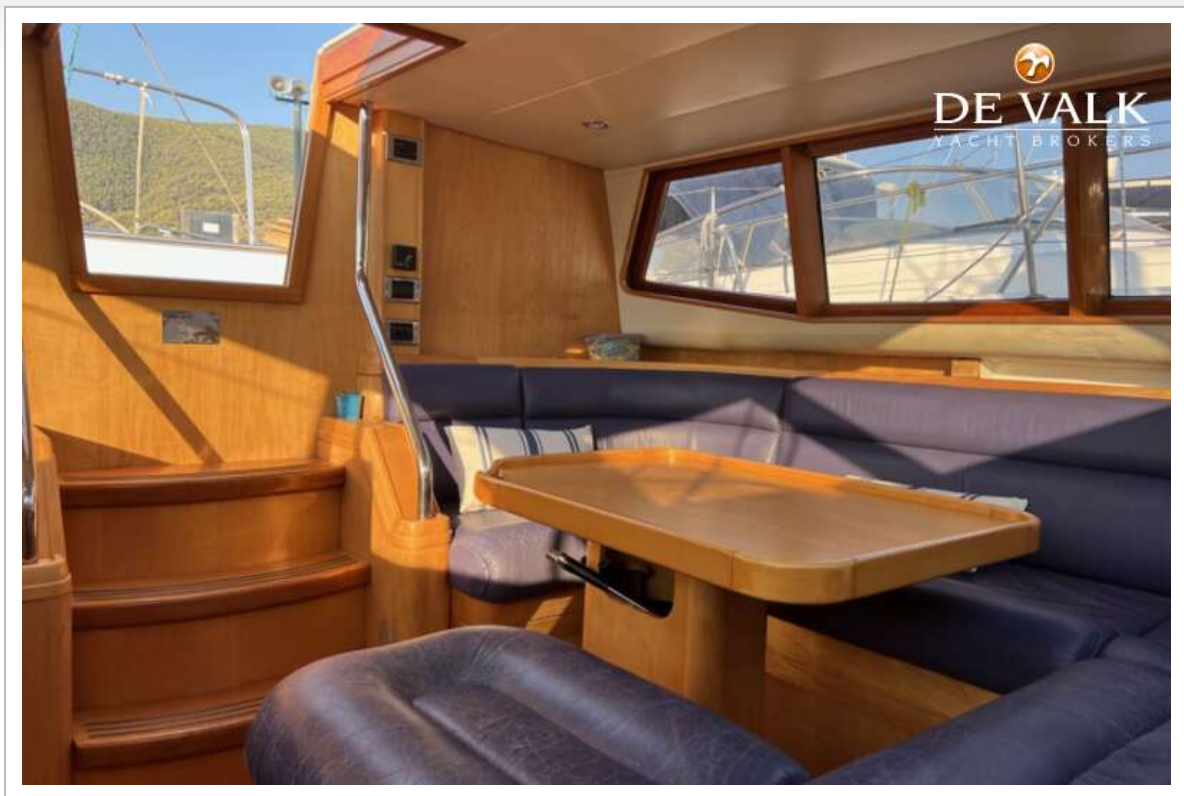
TRINTELLA 52C



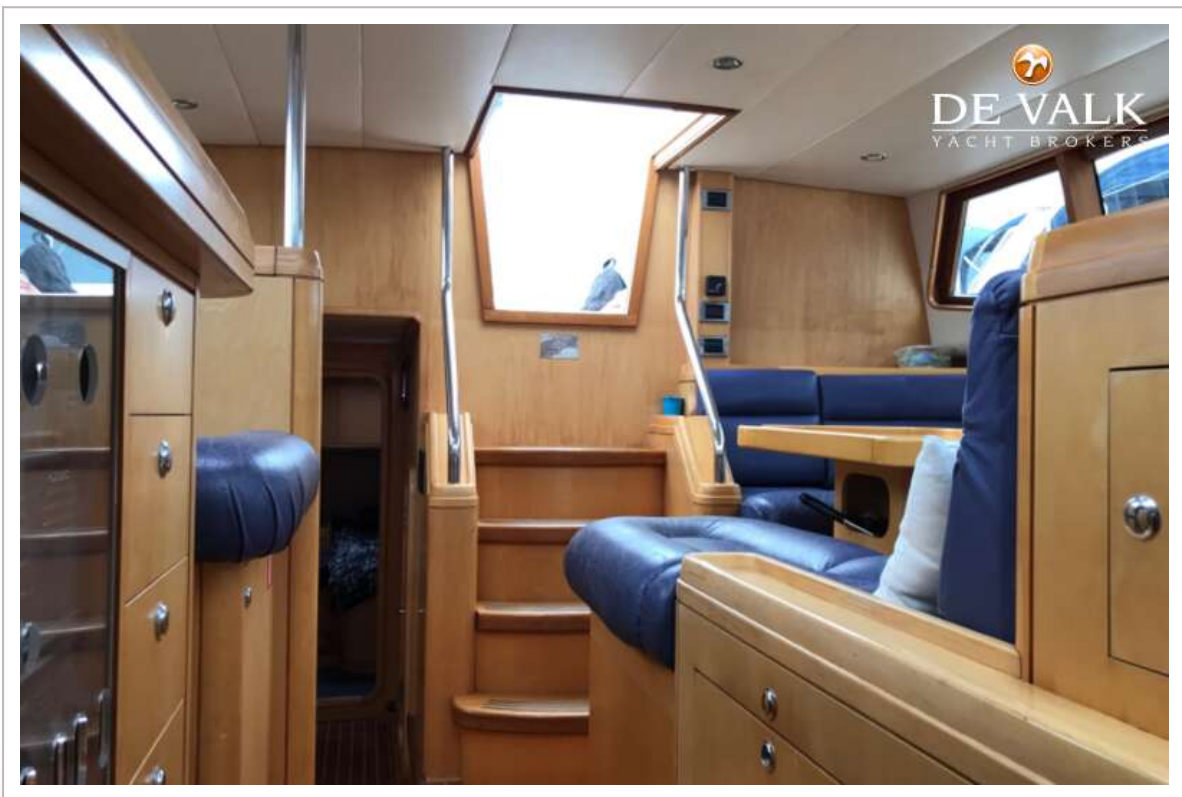
TRINTELLA 52C



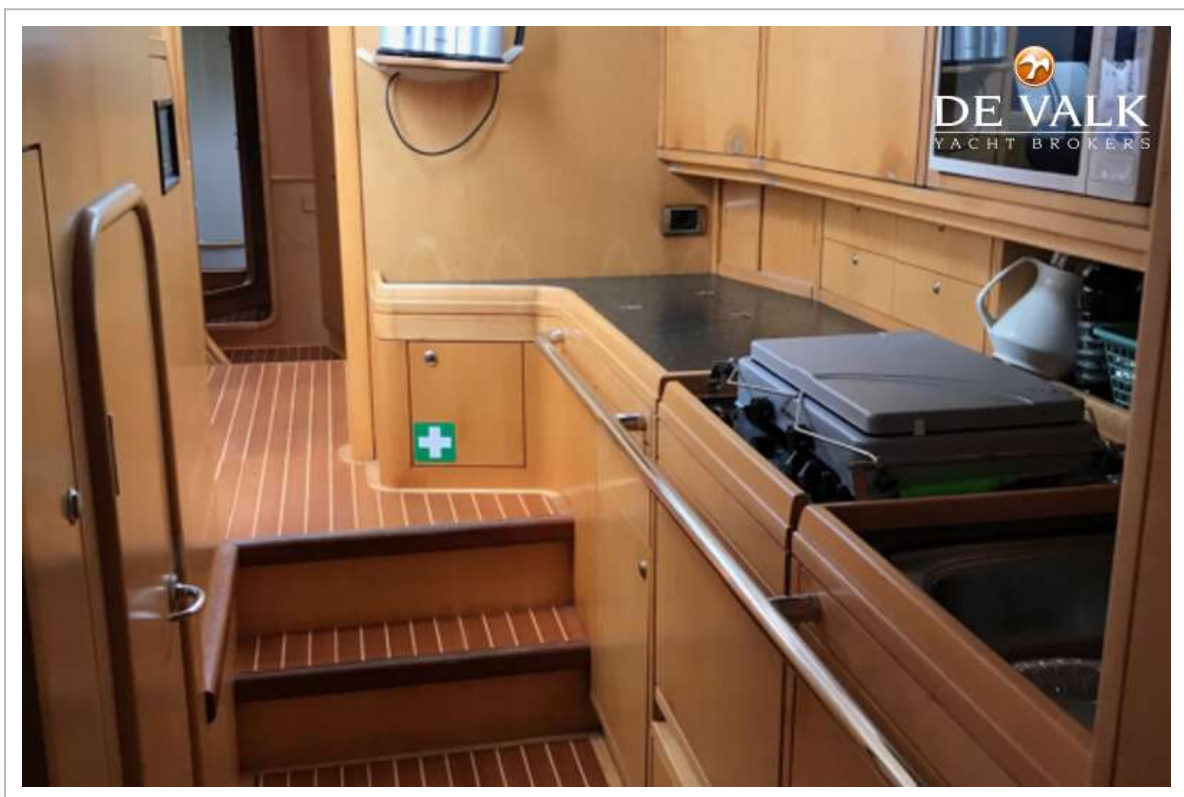
TRINTELLA 52C



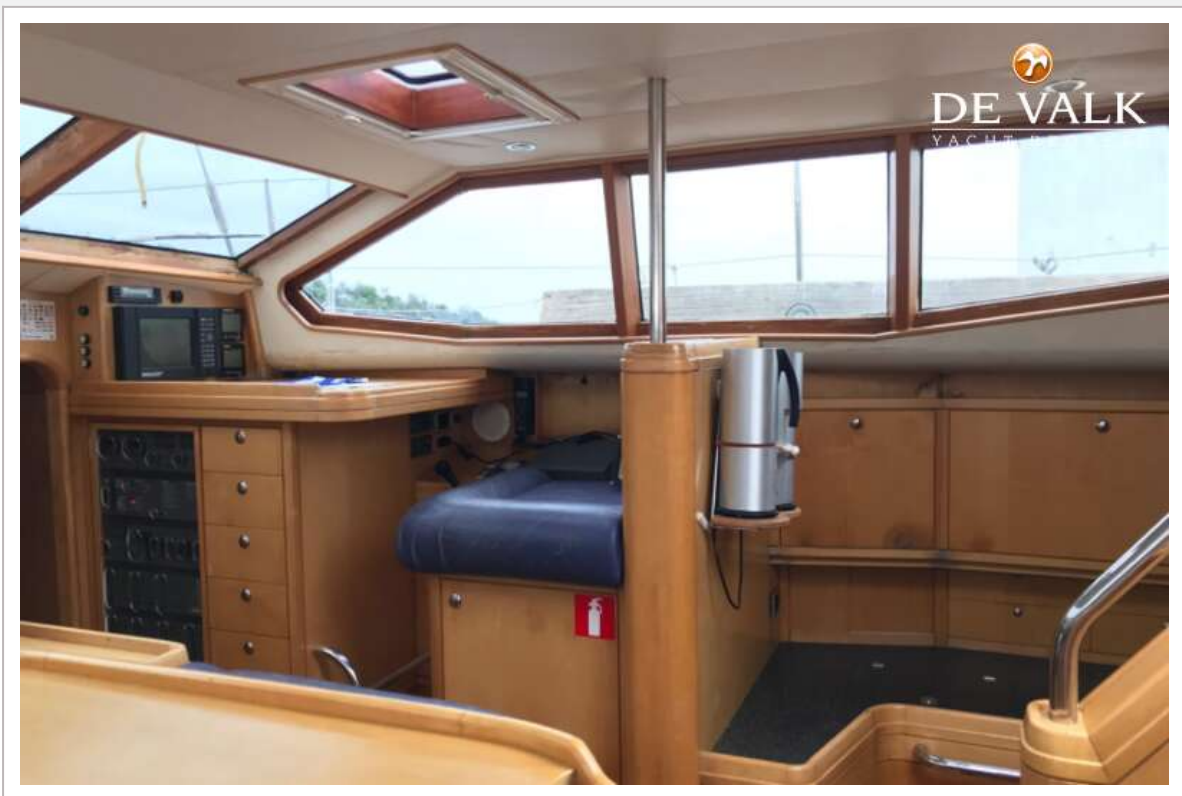
TRINTELLA 52C



TRINTELLA 52C



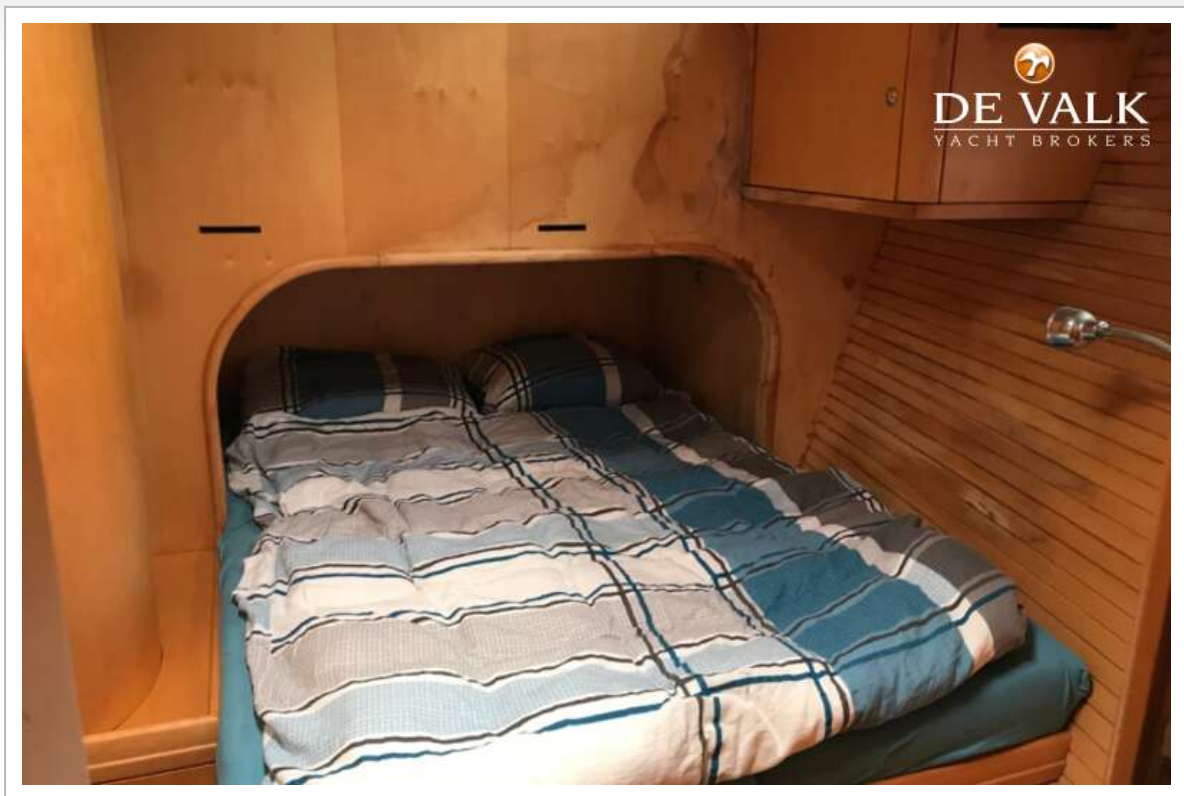
TRINTELLA 52C

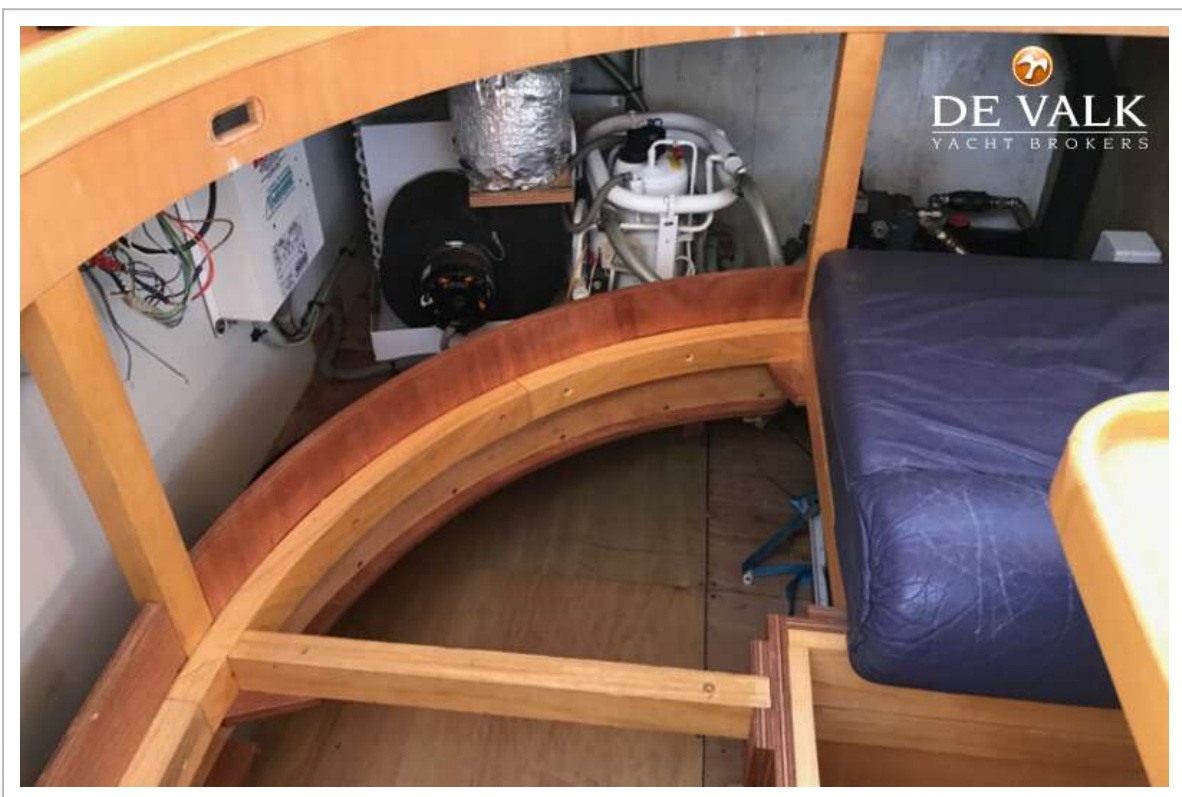
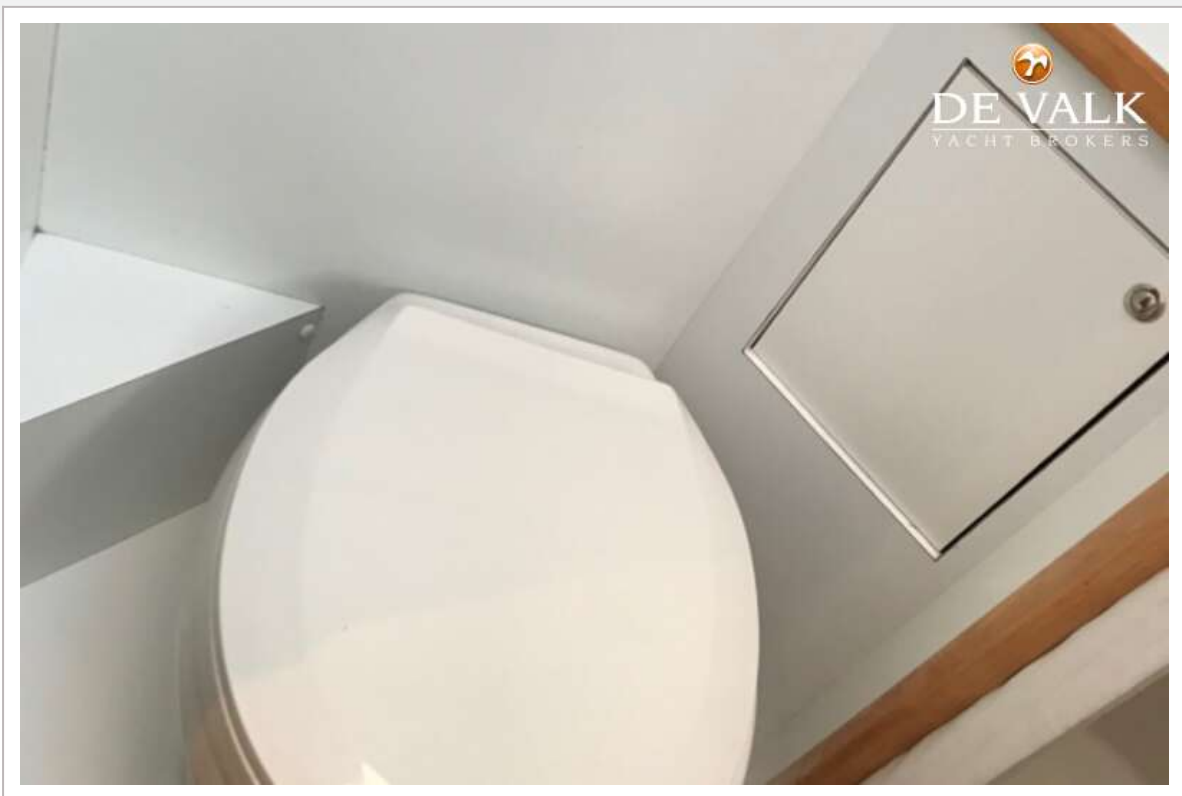


TRINTELLA 52C



TRINTELLA 52C

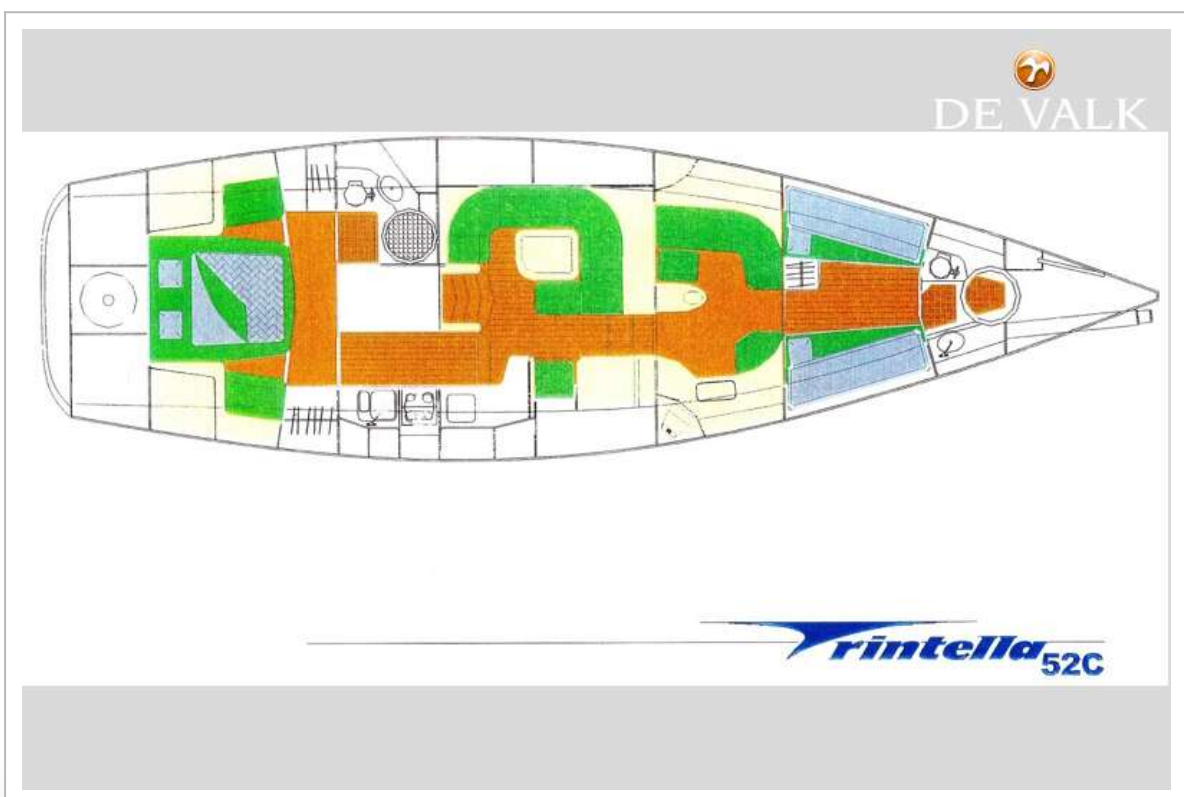
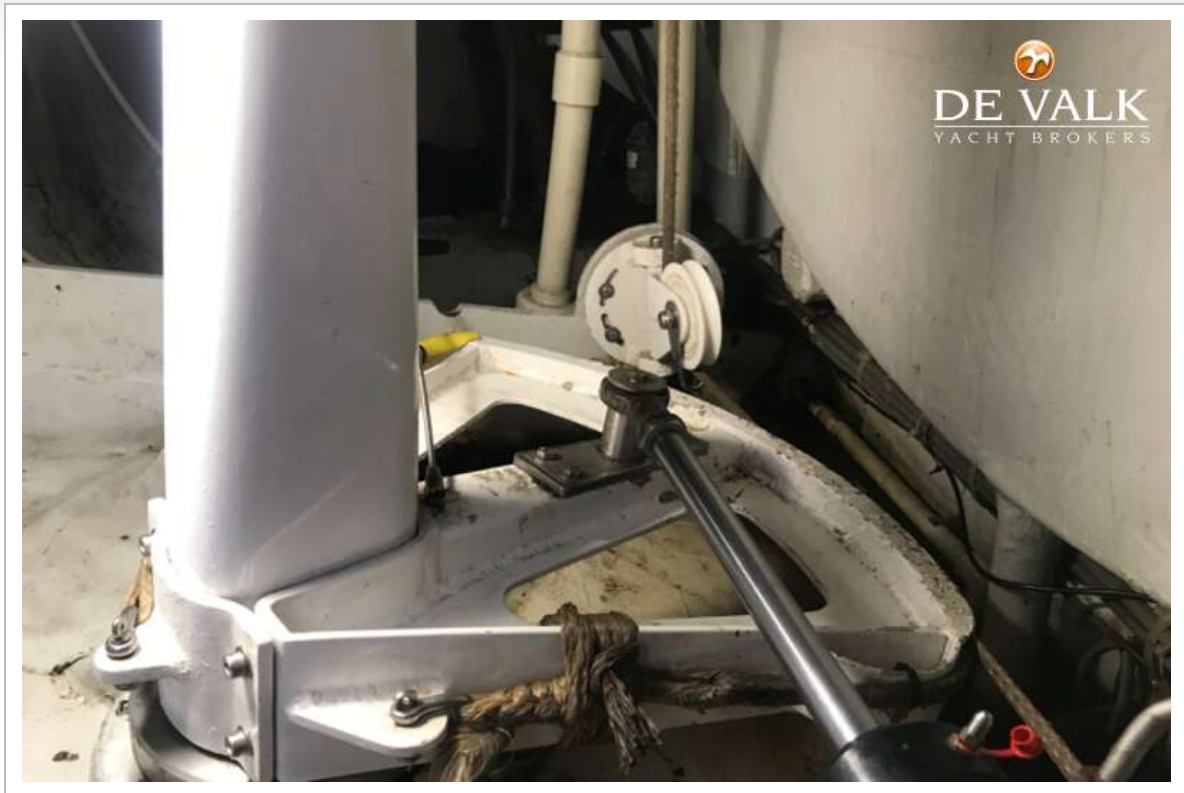




TRINTELLA 52C



TRINTELLA 52C



TRINTELLA 52C

