



DE VALK
YACHT BROKERS



GRAND BANKS 36 MOTORYACHT



DE VALK
YACHT BROKERS

GRAND BANKS 36 MOTORYACHT

BROKER'S COMMENTS

Grand Banks 36 Motor Yacht – Timeless Elegance on the Water. Are you looking to own an iconic motor yacht with classic charm? This Grand Banks 36 is a opportunity to acquire a vessel known for its rugged build, exceptional seaworthiness, and elegant design. Perfect for extended cruising or weekend getaways, this yacht offers comfort, luxury, and a smooth ride. The Grand Banks needs a new owner who will again give her the attention she deserves!

Arjen Hoeksma

SPECIFICATIONS

| | | | |
|---------------------|------------------------------|----------------|------------------------------|
| Dimensions | 11.23 x 3.86 x 1.22 (m) | Builder | American Marine |
| Built | 1997 | Cabins | 2 |
| Material | GRP | Berths | 5 |
| Engine(s) | 2 x Cummins 6VT-509-M diesel | Hp/Kw | 2 x 210.00 (hp), 154.56 (kw) |
| Asking price | € 180.000 (VAT Paid) | Lying | Croatia |

CONTACT

| | | | |
|---------------------|--|------------------|--------------------|
| Sales office | De Valk Dalmatia | Telephone | +385 914 567 834 |
| Address | Ul. Velimira Skorpika 22000 Sibenik HR | E-mail | dalmatia@devalk.nl |

DISCLAIMER

These particulars are given in good faith as supplied but cannot be guaranteed.



GRAND BANKS 36 MOTORYACHT

GENERAL

| | |
|----------------------------|---------------------------|
| Model | GRAND BANKS 36 MOTORYACHT |
| Type | motor yacht |
| LOA (m) | 11,23 |
| LWL (m) | 10,72 |
| Beam (m) | 3,86 |
| Draft (m) | 1,22 |
| Air draft min (m) | 3,99 |
| Headroom (m) | 2,00 |
| Year built | 1997 |
| Builder | American Marine |
| Country | U.S.A. |
| Designer | Ken Smith |
| Displacement (t) | 11,8 |
| CE norm | A |
| Hull material | GRP |
| Hull colour | white |
| Hull shape | V-shaped hull |
| Keel type | long keel |
| Superstructure material | GRP |
| Deck material | GRP |
| Deck finish | teak |
| Superstructure deck finish | teak |
| Cockpit deck finish | teak |
| Antifouling (year) | 2024 |
| Window frame | stainless steel |
| Window material | glass |
| Deckhatch | yes |
| Portholes | copper chromed |
| Flybridge | yes |
| Flybridge suncover | yes |



GRAND BANKS 36 MOTORYACHT

| | |
|------------------------------|---------------------|
| Mast can be lowered | manual |
| Fuel tank (litre) | steel 2x 757 liter |
| Freshwater tank (litre) | stainless steel 582 |
| Level indicator (freshwater) | yes |
| Wheel steering | mechanical |
| Inside helm position | yes |
| Flybridge helm position | mechanical |

ACCOMMODATION

| | |
|-----------------------|-------------------------------------|
| Cabins | 2 |
| Berths | 5 |
| Interior | teak |
| Floor | teak |
| Heating | Webasto A/C X2 |
| Aft Cabin | yes |
| Sink | stainless steel |
| Cooker | calor gas |
| Fridge | 2x Frigo Boat 110 ltr |
| Hot water system | 220V + engine |
| Water pressure system | electrical Jabsco |
| Ice maker | yes |
| Owners cabin | twin single 1,95x1,40 and 1,95/1,00 |
| Bed length (m) | 1,95 |
| Wardrobe | hanging and drawers |
| Bathroom | en suite |
| Toilet | en suite |
| Toilet system | electric |
| Wash basin | in the bathroom |
| Shower | en suite |
| Guest cabin 1 | v-bed |
| Bed length (m) | 1,95 |



GRAND BANKS 36 MOTORYACHT

| | |
|---------------|---------------------|
| Wardrobe | hanging and drawers |
| Bathroom | separate |
| Toilet | separate |
| Toilet system | electric |
| Wash basin | in the bathroom |
| Shower | yes |

MACHINERY

| | |
|--------------------------|-----------------|
| No of engines | 2 |
| Make | Cummins |
| Type | 6VT-509-M |
| HP | 210 |
| kW | 154.56 |
| Fuel | diesel |
| Maximum speed (kn) | 14 |
| Cruising speed (kn) | 10 |
| Engine hours | 1250 |
| Drive | shaft |
| Saildrive seal | yes |
| Engine controls | bowden cable |
| Gearbox | hydraulic |
| Bowthruster | Side power |
| Exhaust | watercooled |
| Propeller type | fixed |
| Propeller blades | 4x |
| Propeller shaft material | stainless steel |
| Shaft lubrication | water |
| Electrical installation | 12V / 220V |
| Generator | Vetus 11 Kw |
| Bowthruster battery | yes |
| Battery monitor | yes |



GRAND BANKS 36 MOTORYACHT

Battery charger/inverter

Sentry Crissair

Shorepower

with cable

NAVIGATION

Depth sounder/log

Autohelm Raymarine ST 60+

VHF

Garmin GHS 10i

Autopilot

Raymarine ST

GPS

Garmin

Radar/GPS/plotter

Garmin X2

EQUIPMENT

Bathing platform

yes

Gangway

Hydraulic

Dinghy

With Suzuki 3.5hp

TV

2x

Extra info

Teak deck may need to be replaced



GRAND BANKS 36 MOTORYACHT



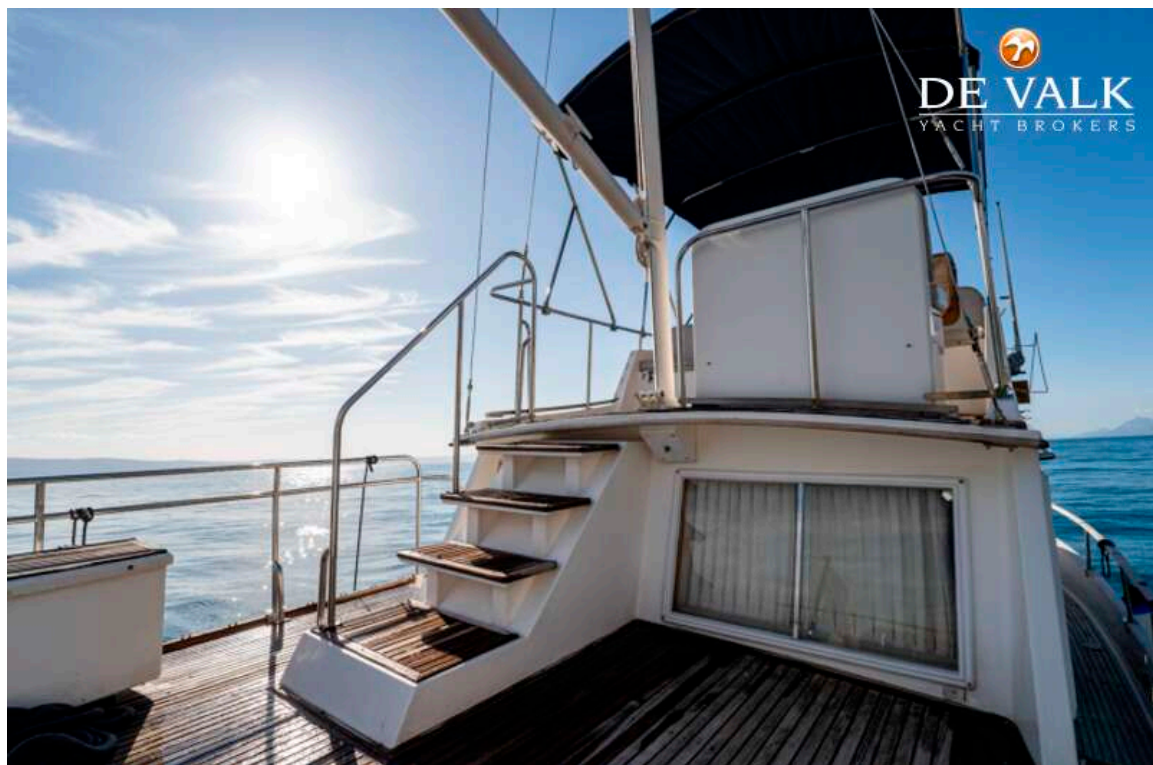
GRAND BANKS 36 MOTORYACHT



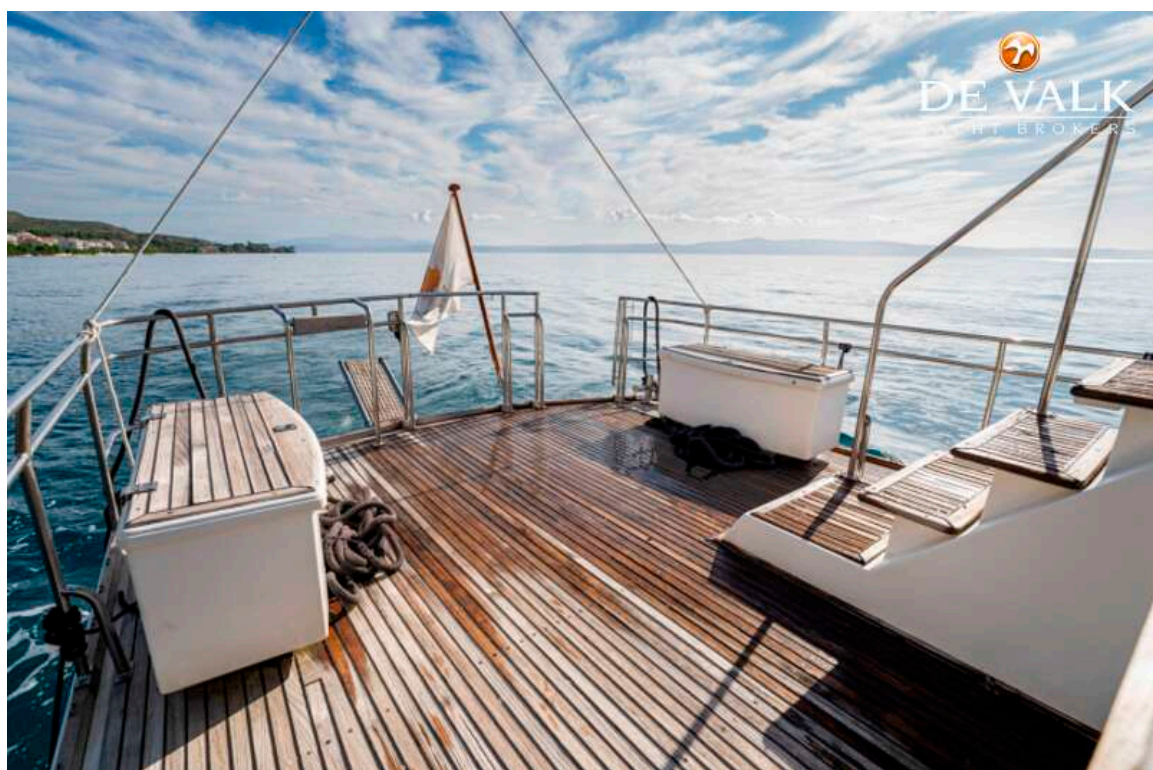
GRAND BANKS 36 MOTORYACHT



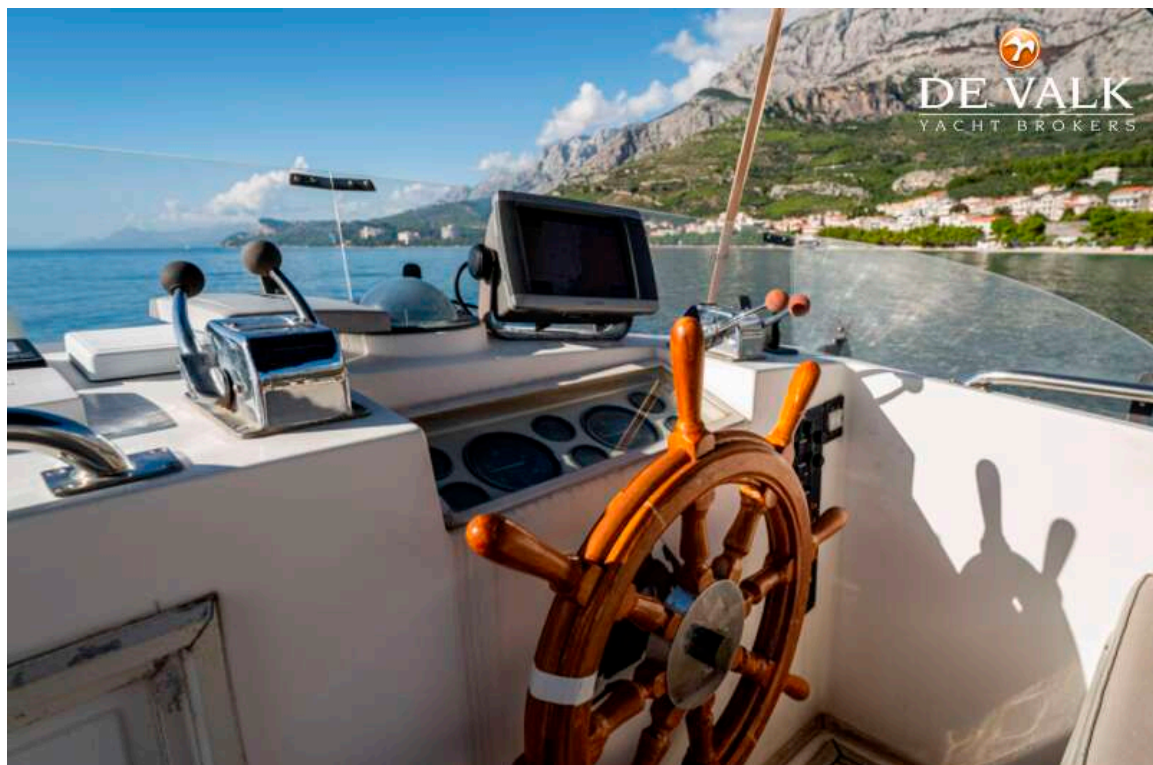
GRAND BANKS 36 MOTORYACHT



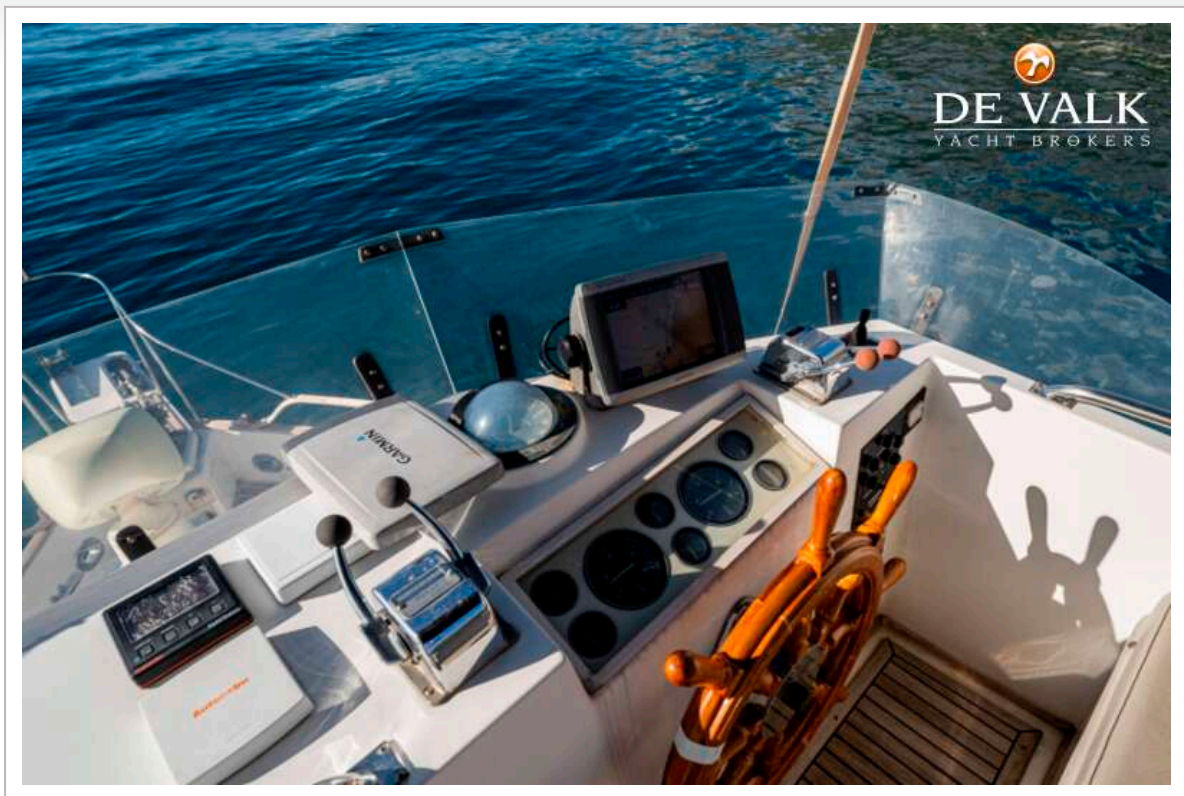
GRAND BANKS 36 MOTORYACHT



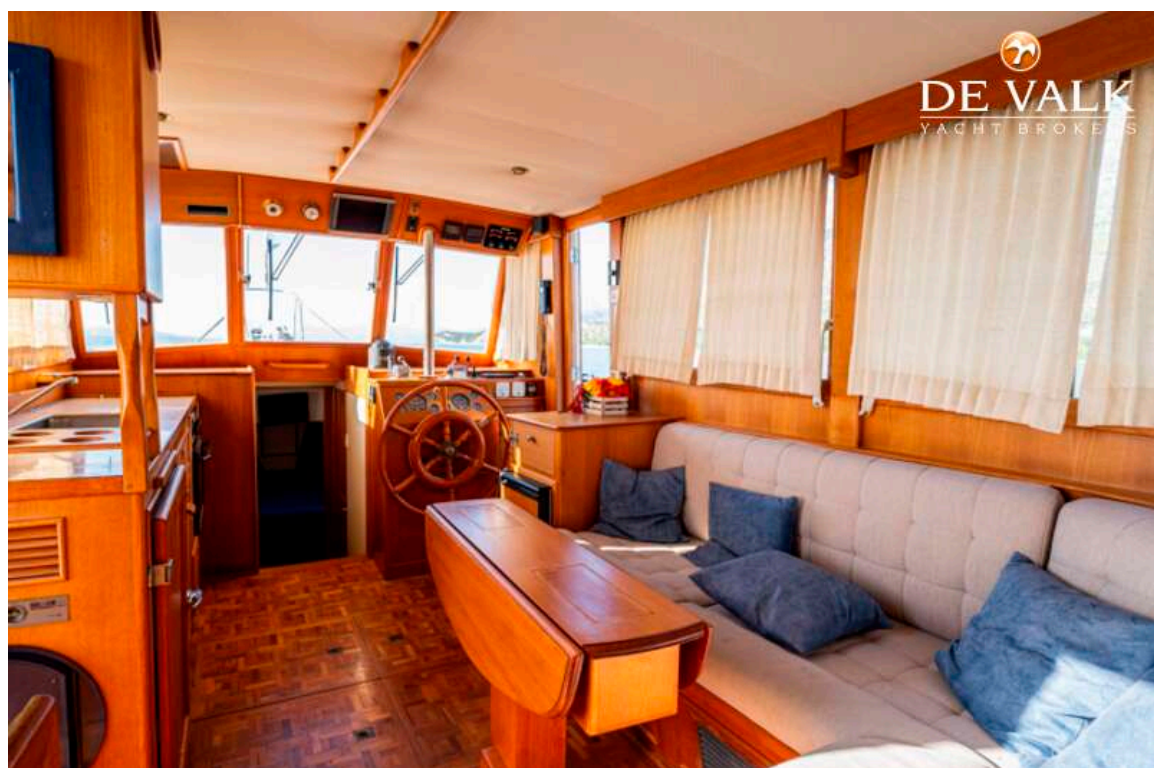
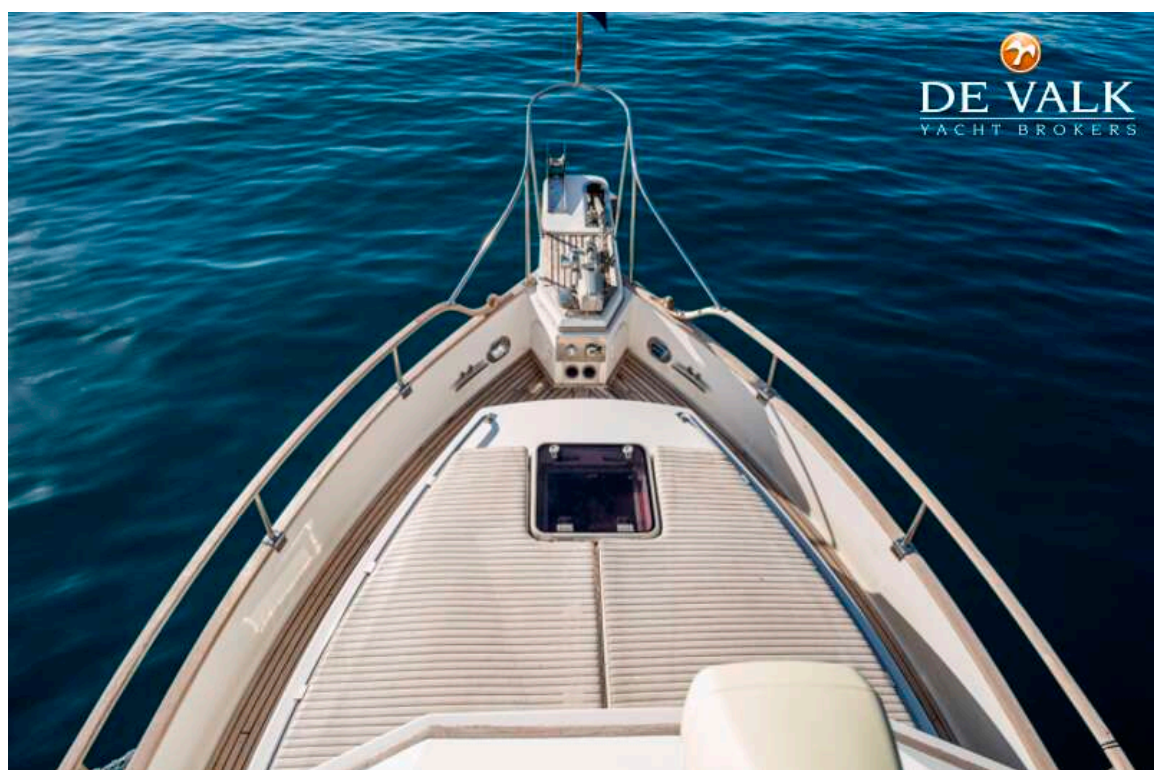
GRAND BANKS 36 MOTORYACHT



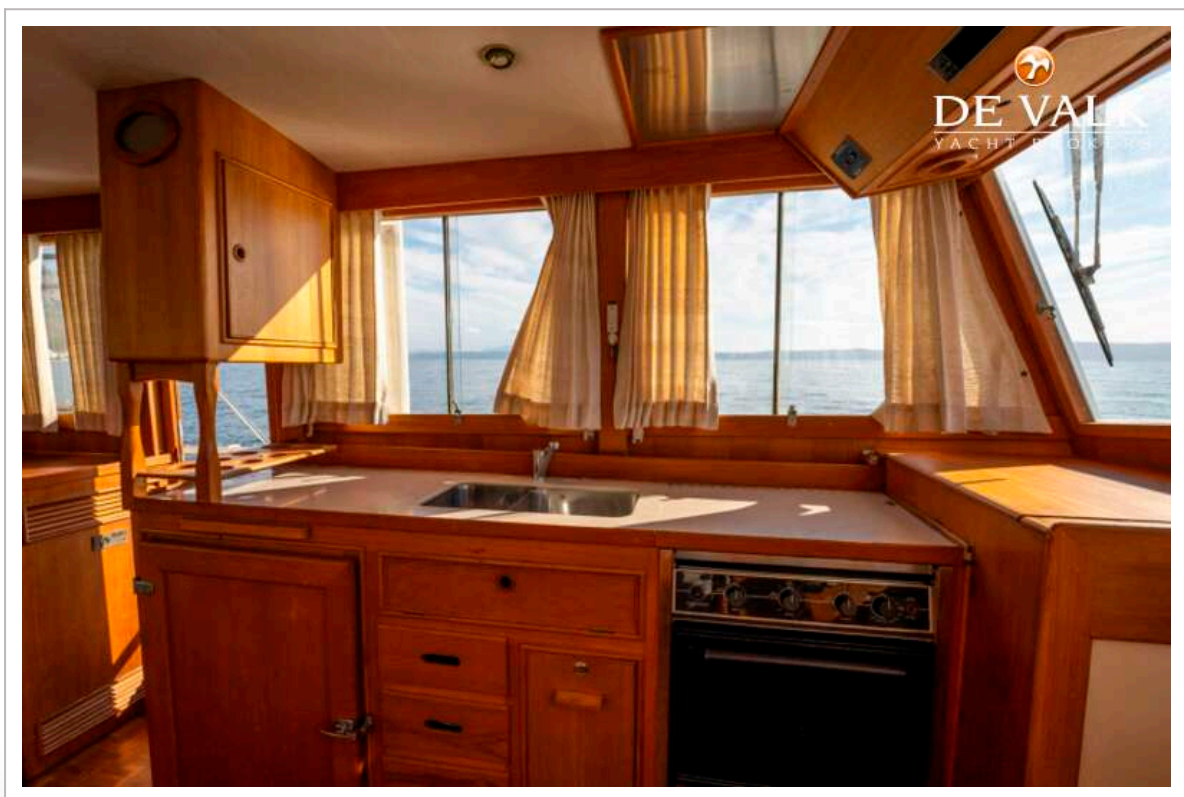
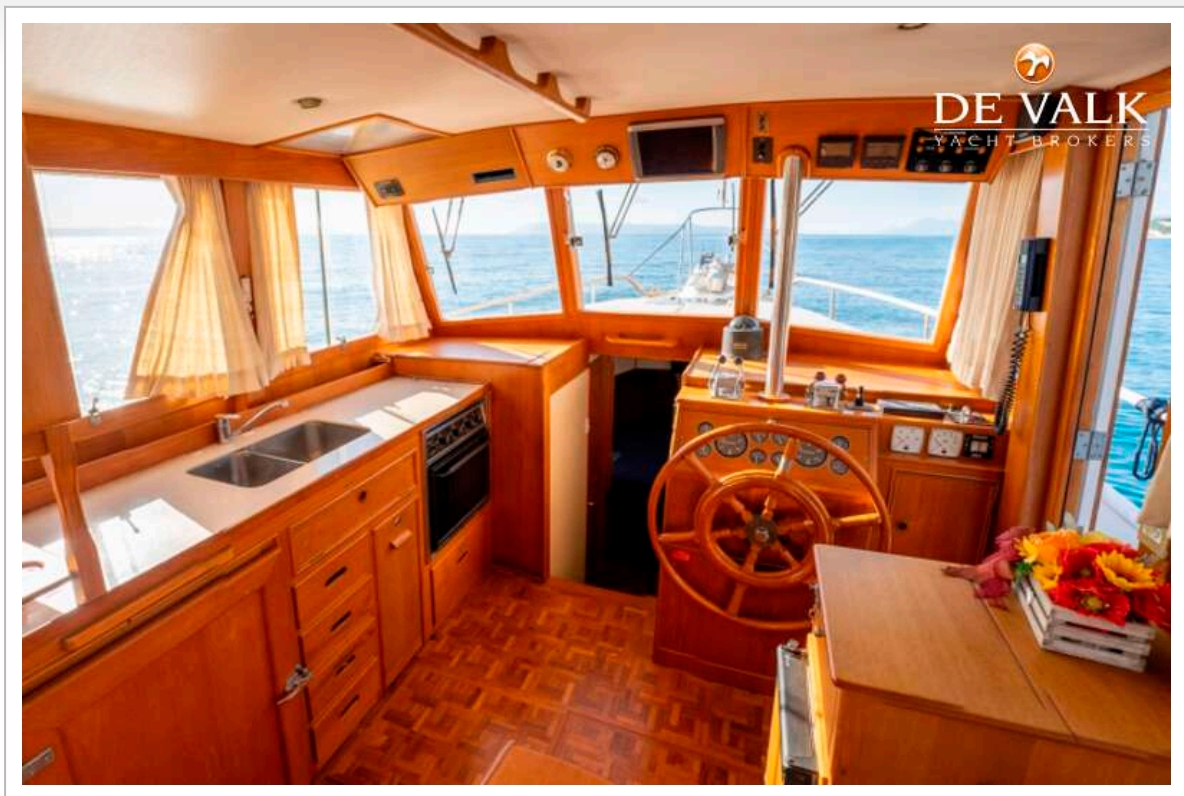
GRAND BANKS 36 MOTORYACHT



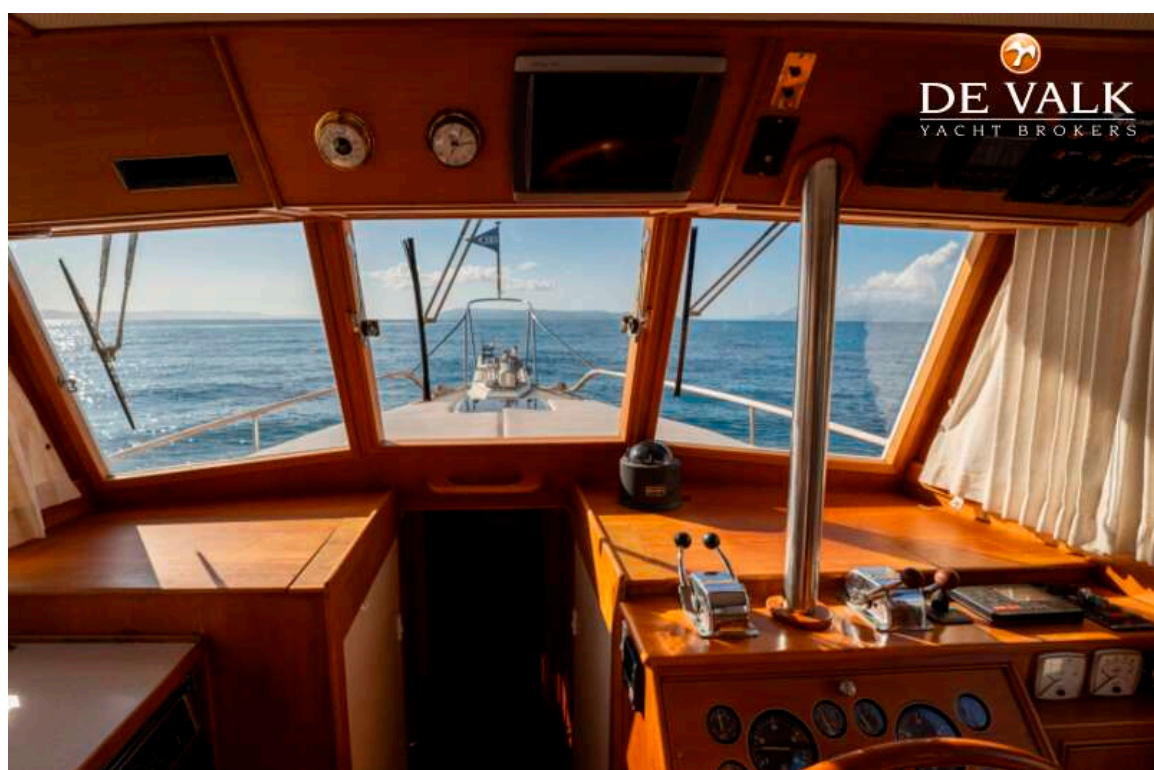
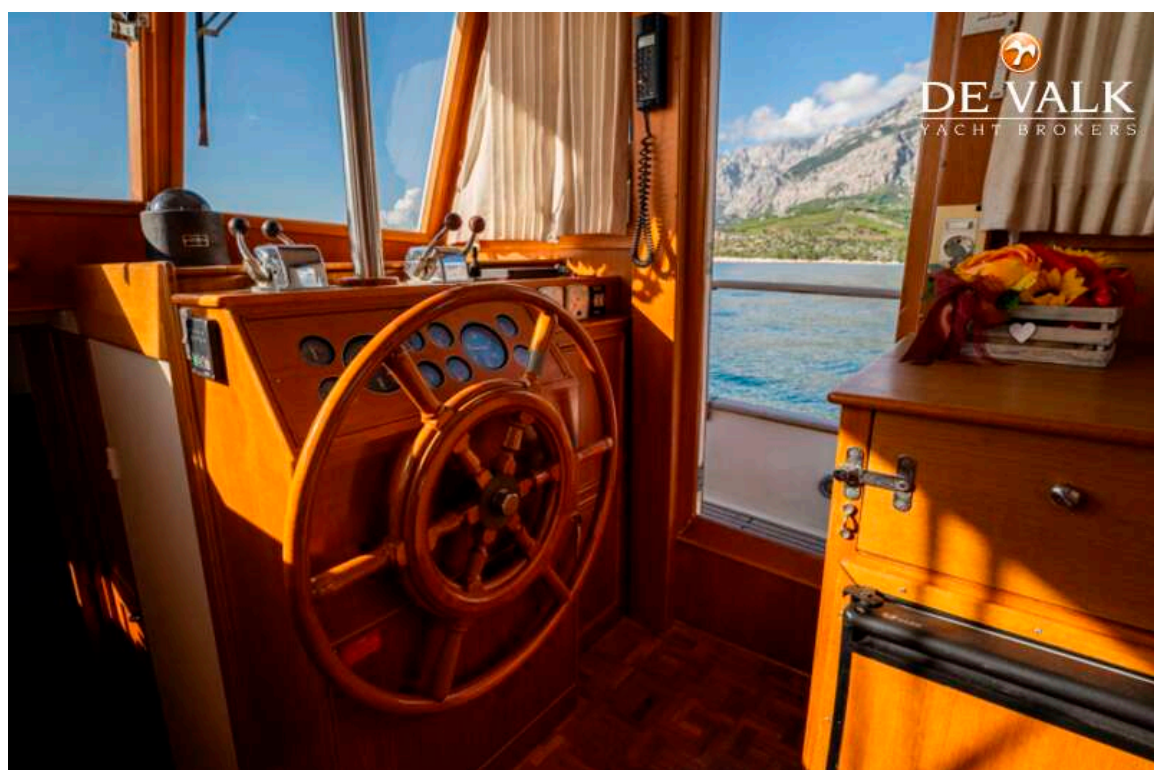
GRAND BANKS 36 MOTORYACHT



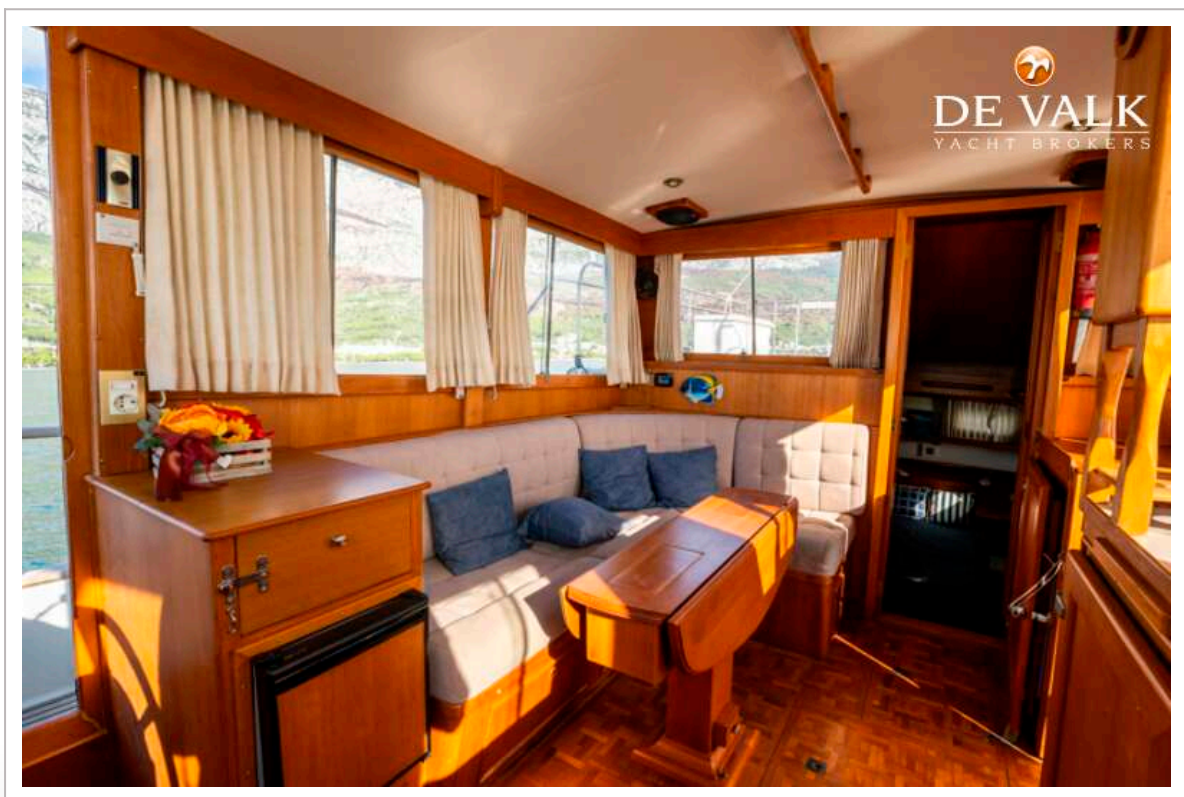
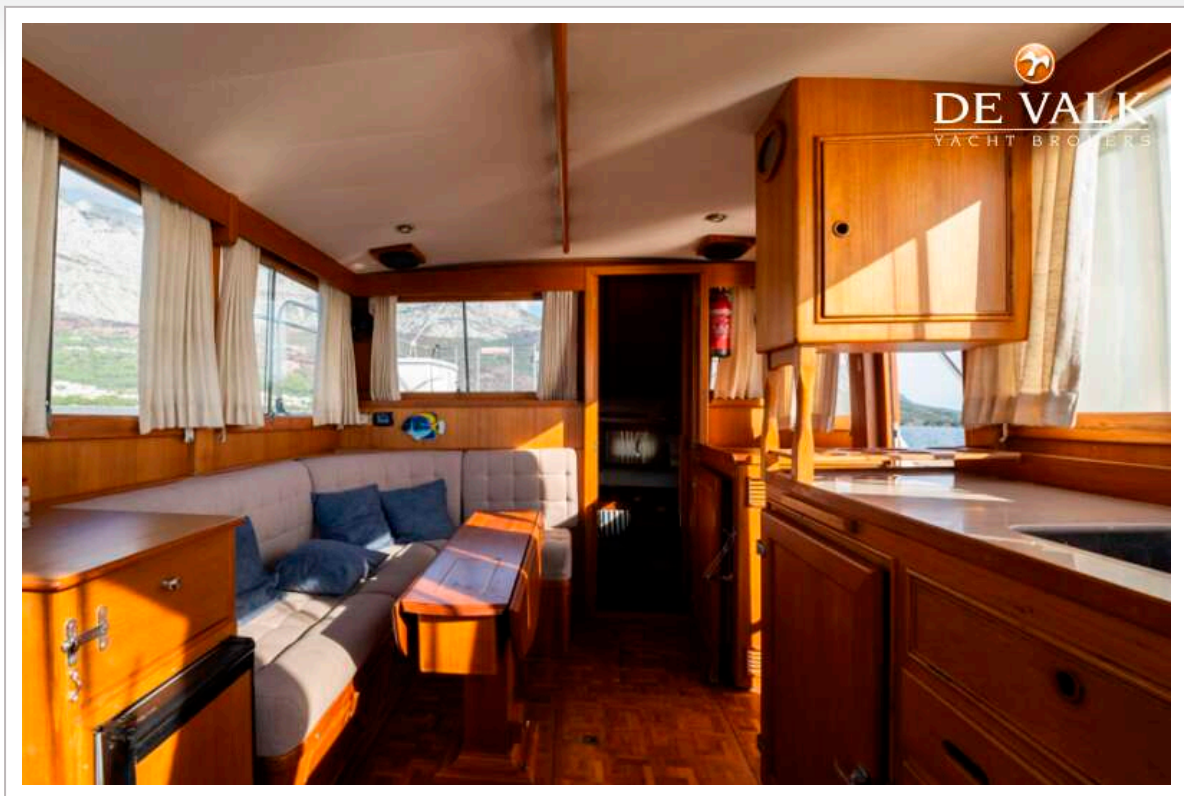
GRAND BANKS 36 MOTORYACHT



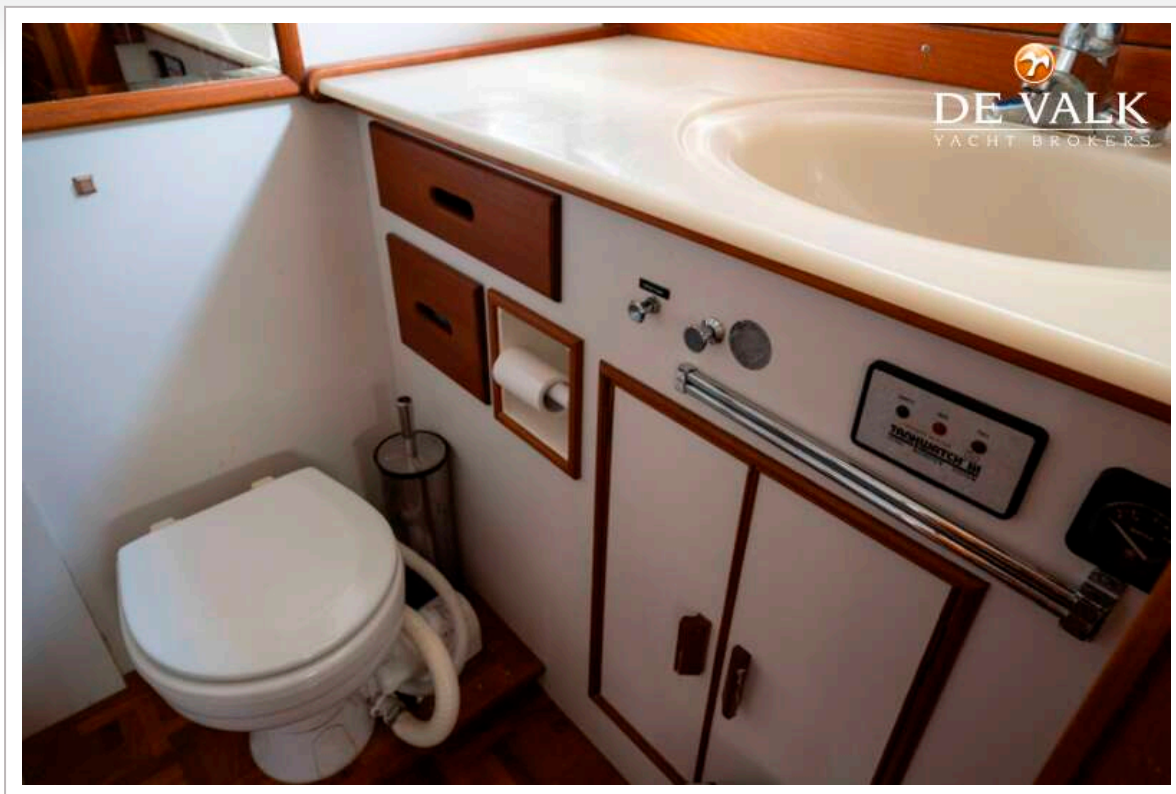
GRAND BANKS 36 MOTORYACHT



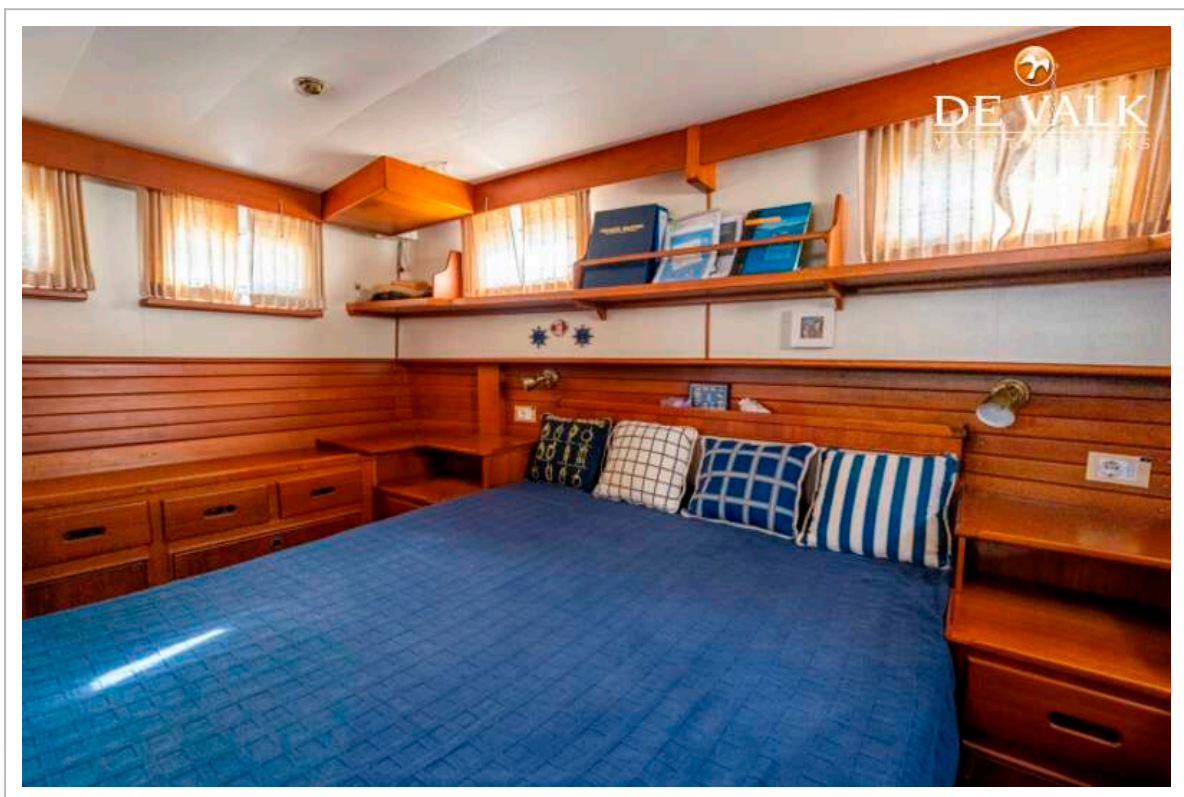
GRAND BANKS 36 MOTORYACHT



GRAND BANKS 36 MOTORYACHT



GRAND BANKS 36 MOTORYACHT



GRAND BANKS 36 MOTORYACHT

