



DE VALK
YACHT BROKERS



STENTOR 1500



DE VALK
YACHT BROKERS

STENTOR 1500

BROKER'S COMMENTS

The Stentor 1500 is a design of Vripack Yacht design. This sturdy yacht is also known as the Vripack Coastal. The Stentor 1500, equipped with 2 cabins and 5 sleeping places, can be called a 'long range' motor yacht with a tank capacity of 5,000 L.. The Cummins 250 hp, has a consumption of approx. 10 l./h. @ 1.400 revs. The technical equipment includes hydraulic bow and stern thruster, Westerbeke 6 kW. generator and a Kabola central heating.

Mark Hesselmans

SPECIFICATIONS

Dimensions	14.37 x 4.65 x 1.35 (m)	Builder	
Built	1995	Cabins	2
Material	Steel	Berths	5
Engine(s)	1 x Cummins 6BTA5.9-M2 diesel	Hp/Kw	250.00 (hp), 183.75 (kw)
Asking price	Under Offer (VAT)	Lying	at sales office

CONTACT

Sales office	De Valk Loosdrecht B.V.	Telephone	+31 (0)35 582 90 30
Address	't Breukeleveense Meentje 6 1231LM Loosdrecht / Wijdmeren NL	E-mail	loosdrecht@devalk.nl

DISCLAIMER

These particulars are given in good faith as supplied but cannot be guaranteed.



STENTOR 1500

GENERAL

Model	STENTOR 1500
Type	motor yacht
LOA (m)	14,37
Beam (m)	4,65
Draft (m)	1,35
Air draft (m)	6,38
Air draft min (m)	3,40
Headroom (m)	2,00
Year built	1995
Country	The Netherlands
Designer	Vripack
Displacement (t)	38
Hull material	steel
Hull colour	blue
Hull shape	hard chine
Superstructure material	steel
Rubbing strake	rubber
Deck material	steel
Deck finish	teak
Cockpit deck finish	teak
Window frame	aluminium
Window material	glass GEBO
Deckhatch	yes
Portholes	aluminium
Mast can be lowered	manual
Fuel tank (litre)	steel 5.000
Level indicator (fuel tank)	yes
Freshwater tank (litre)	1.000
Blackwater tank (litre)	700
Level indicator (blackwater)	yes



STENTOR 1500

Wheel steering	hydraulic
Outside helm position	hydraulic

ACCOMMODATION

Cabins	2
Berths	5
Interior	teak
Floor	teak and holly
Aft deck	Teak
Saloon	yes
Headroom saloon (m)	2,00
Heating	Kabola B17-tap 19,7 kW
Aft Cabin	2x
Dinette	yes
Opening door to aft deck	yes
Galley	yes
Countertop	Duropol
Sink	stainless steel
Cooker	calor gas Gimeg 4-burner, 2010
Extractor	yes
Microwave	Siemens 2015
Fridge	Liebherr Premium 135 L., 2015.
Hot water system	yes
Water pressure system	electrical Hydro-s 2015
Owners cabin	French bed With safe
Wardrobe	shelves
Bathroom	en suite
Toilet	en suite
Toilet system	electric Tecma
Wash basin	in the bathroom
Shower	en suite



STENTOR 1500

Guest cabin 1	bunk bed
Wardrobe	shelves
Bathroom	shared
Toilet	shared
Toilet system	electric RM69
Wash basin	in the bathroom
Shower	shared
Guest cabin 2	Twin single + bunk bed
Wardrobe	shelves
Bathroom	shared
Toilet	shared
Toilet system	electric RM69
Wash basin	in the bathroom
Shower	shared
Washing machine/dryer combi	AEG 2010

MACHINERY

No of engines	1
Make	Cummins
Type	6BTA5.9-M2
HP	250
kW	183.75
Fuel	diesel
Maximum speed (kn)	10
Cruising speed (kn)	8
Consumption (l/hr)	8
Engine hours	2700
Engine cooling system	freshwater heat exchanger
Drive	shaft
Engine controls	yes
Gearbox	hydraulic Twindisc MG-5050 2.45.1



STENTOR 1500

Bowthruster	hydraulic With remote control
Sternthruster	hydraulic With remote control
Exhaust	watercooled
Propeller type	fixed
Propeller shaft material	stainless steel
Electric bilge pump	yes
Electrical installation	12/24/220 Volt
Generator	Westerbeke 6 kW
Running hours generator	1220 (24-9-2017)
Batteries	4x 230Ah/12V Semi Traction 2x Bosch 61Ah/12V
Service battery	4x , 460 Ah., 2017
Generator battery	60Ah 12V, 2017
Battery monitor	Victron BMV-6025
Battery charger	Mastervolt Mass 24/75-C
Inverter	Cotek EA-MEC PB 2000-24 2000W
Shorepower	with cable

NAVIGATION

Compass	Autohelm
Depth sounder/log	Raymarine ST60+
VHF	Ray240E
Autopilot	Garmin
Rudder angle indicator	Autohelm
Plotter	Raymarine C80 (defect)
Searchlight	Jabsco, 2013
Loudhailer	Raymarine M95435 60W

EQUIPMENT

Cockpit cover	2019
Bathing platform	yes
Boarding ladder	stainless steel

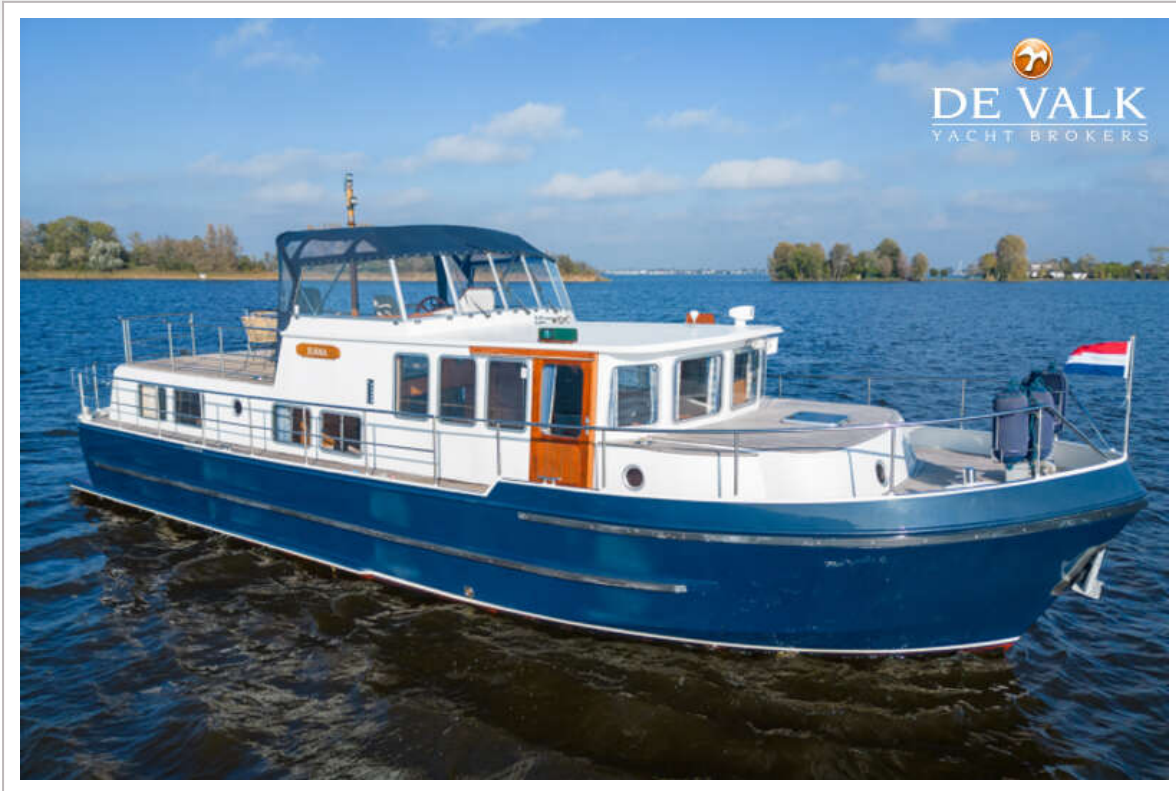


STENTOR 1500

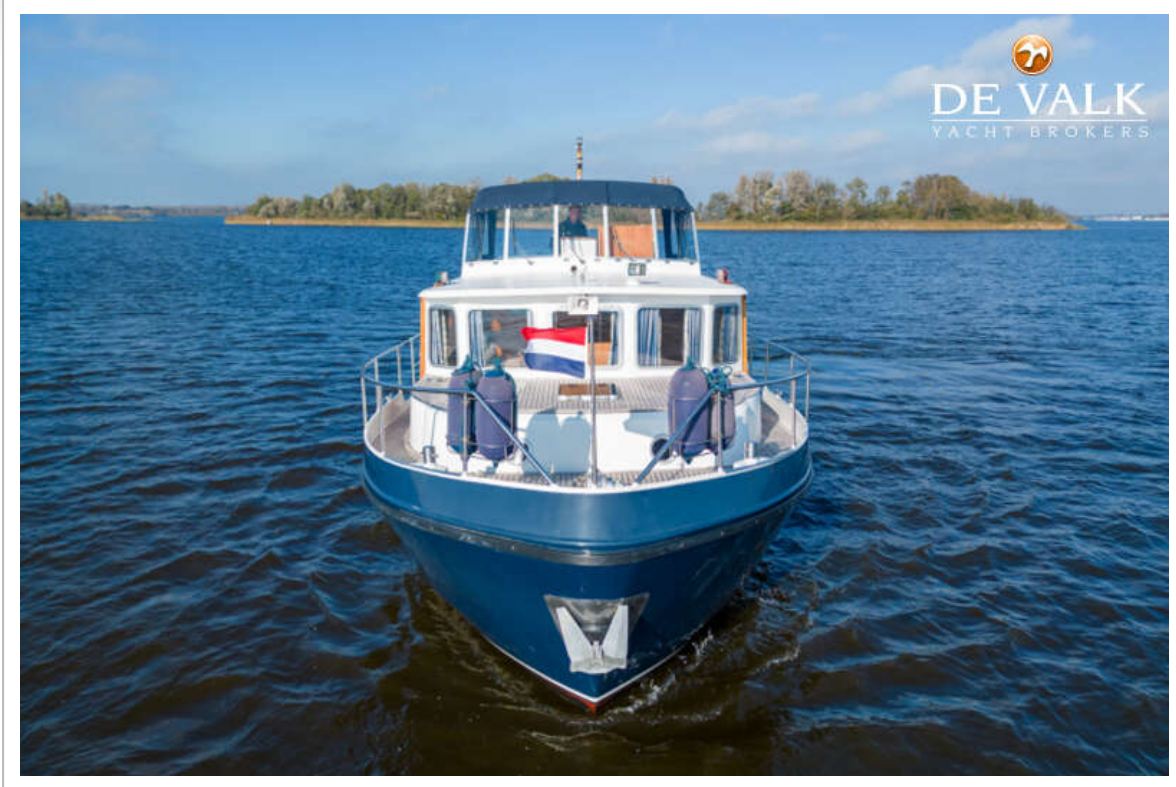
Anchor	Pool
Anchor chain	30 m.
Windlass	electrical Lofrans 1500W 24V, 2010, with remote control
Davits	stainless steel
Davits controls	manual
Sea railing	yes
Railing side opening gates	yes
Wiper	yes
Horn	electric
Radio-cd player	Akai



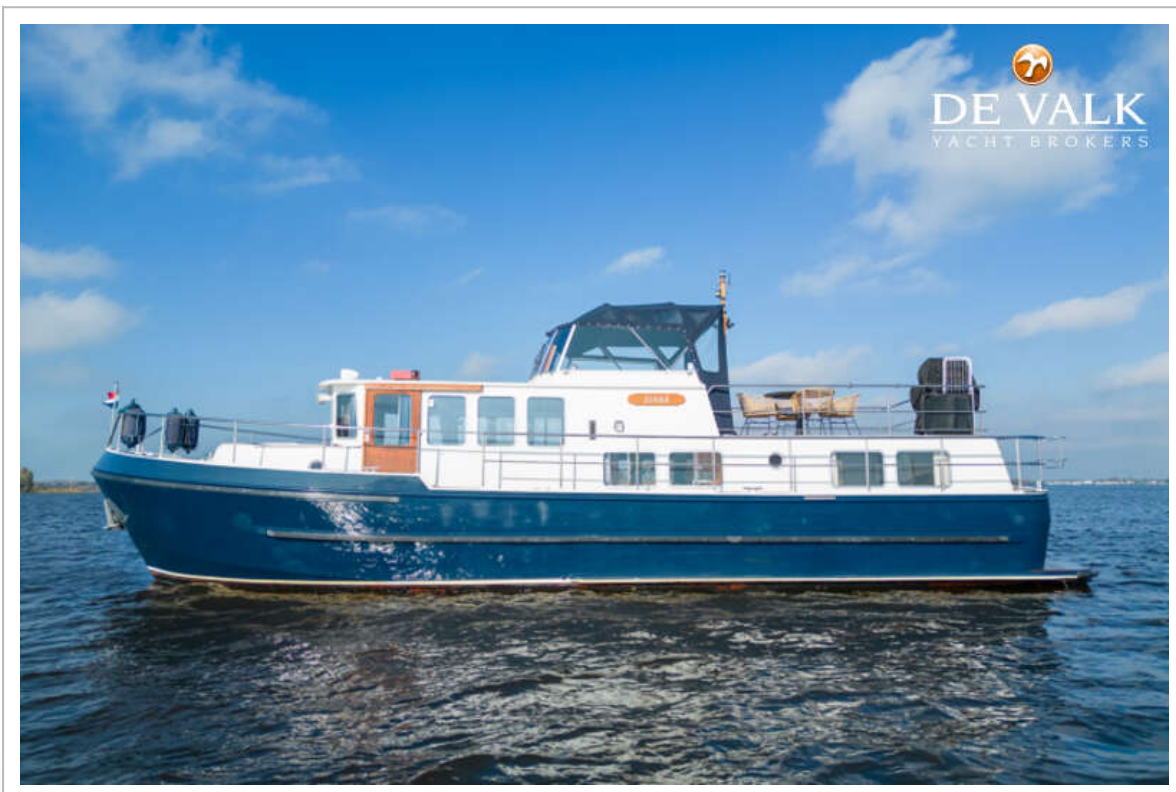
STENTOR 1500



STENTOR 1500



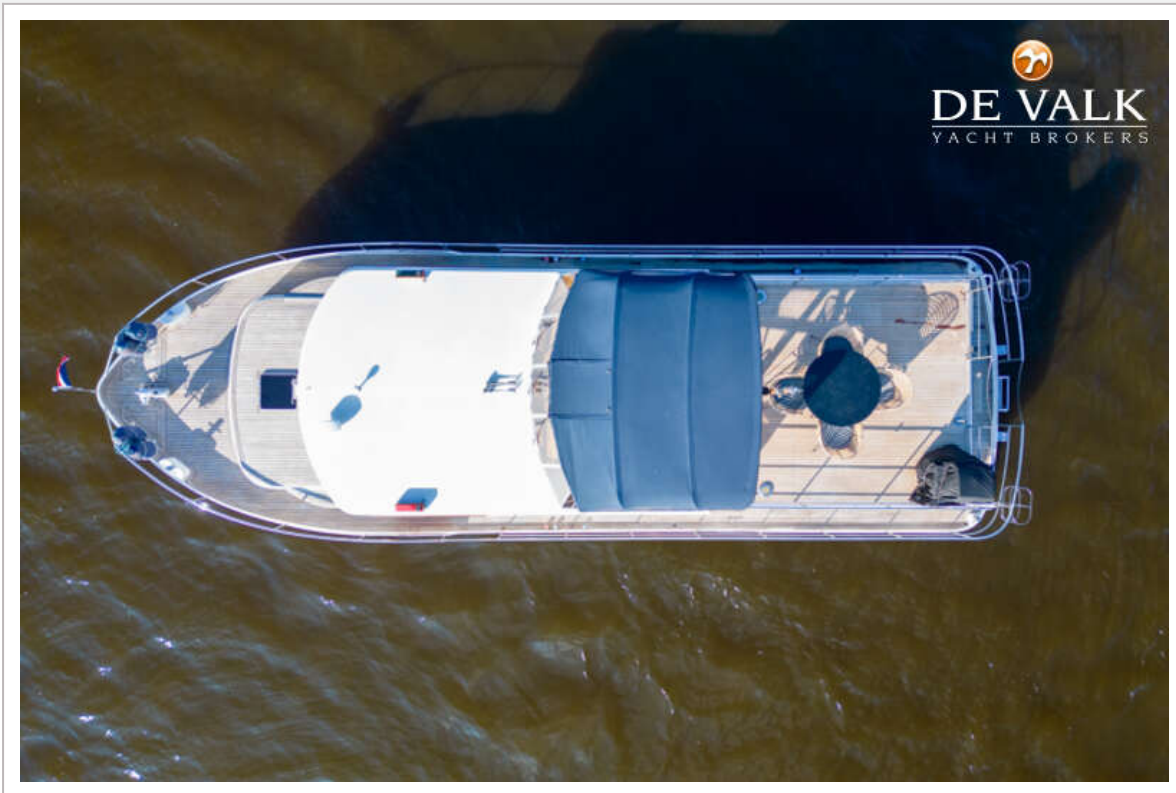
STENTOR 1500



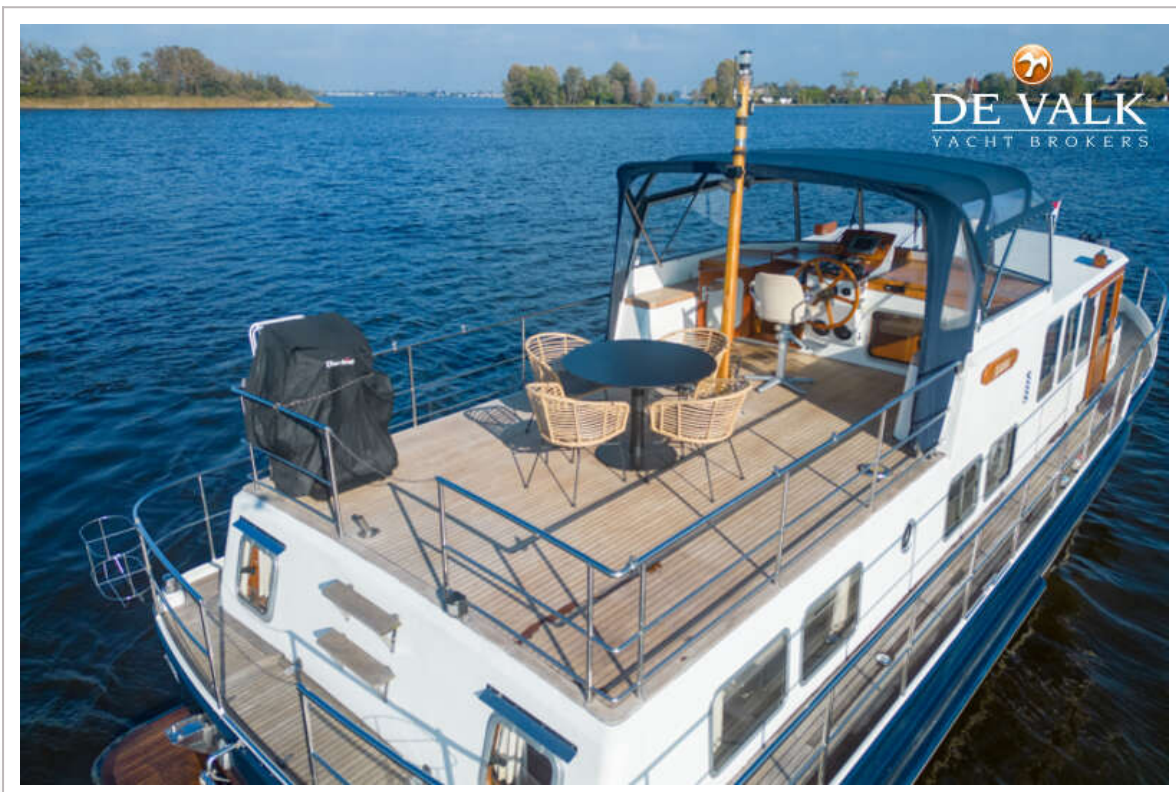
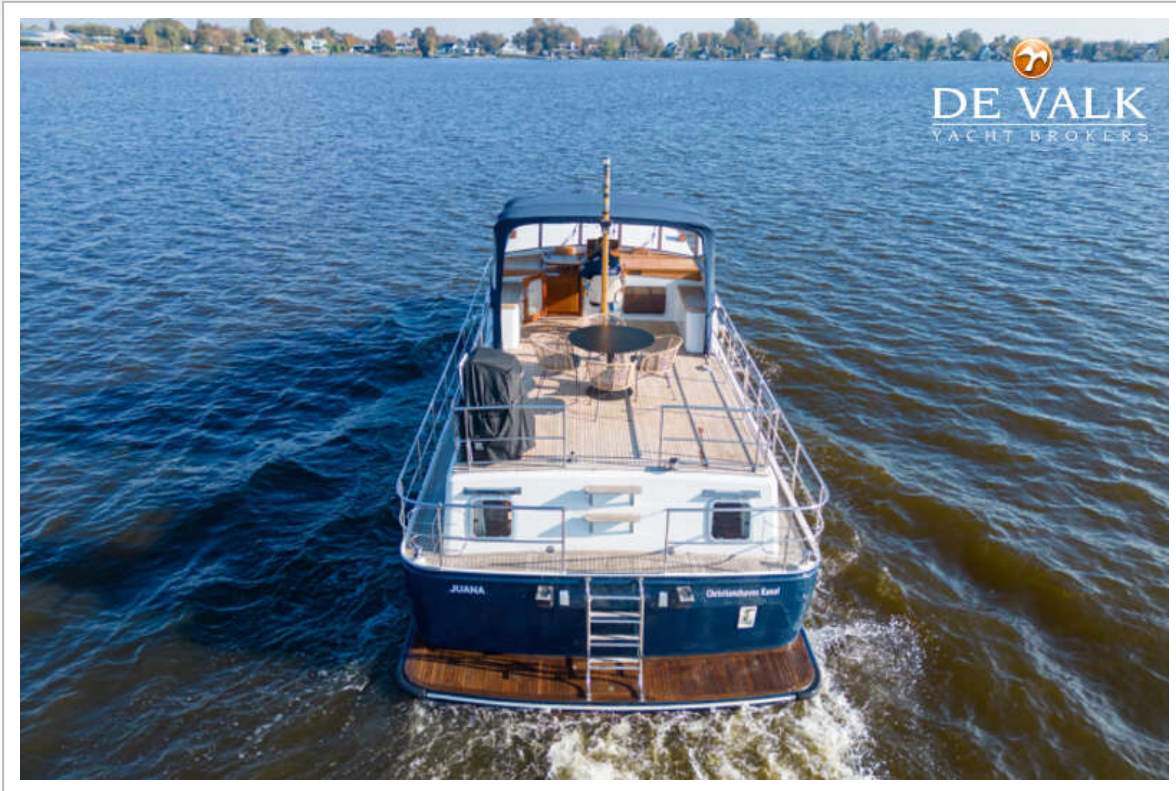
STENTOR 1500



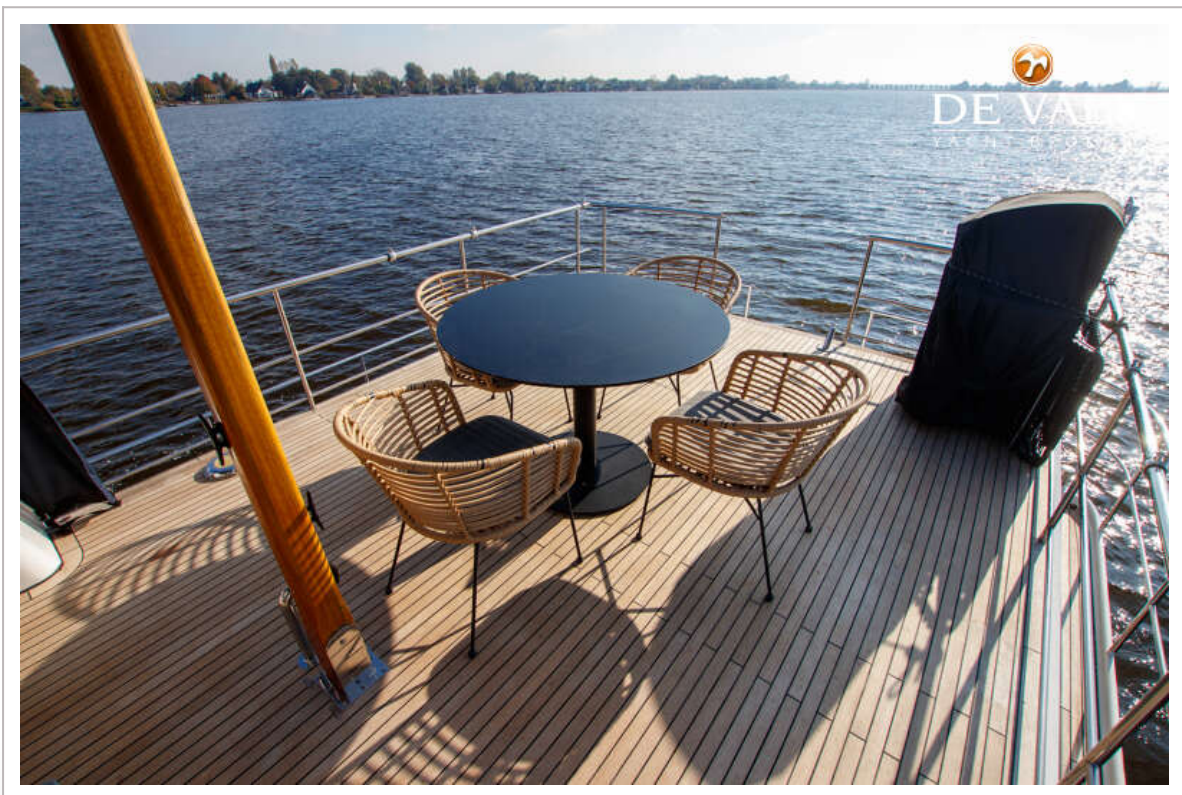
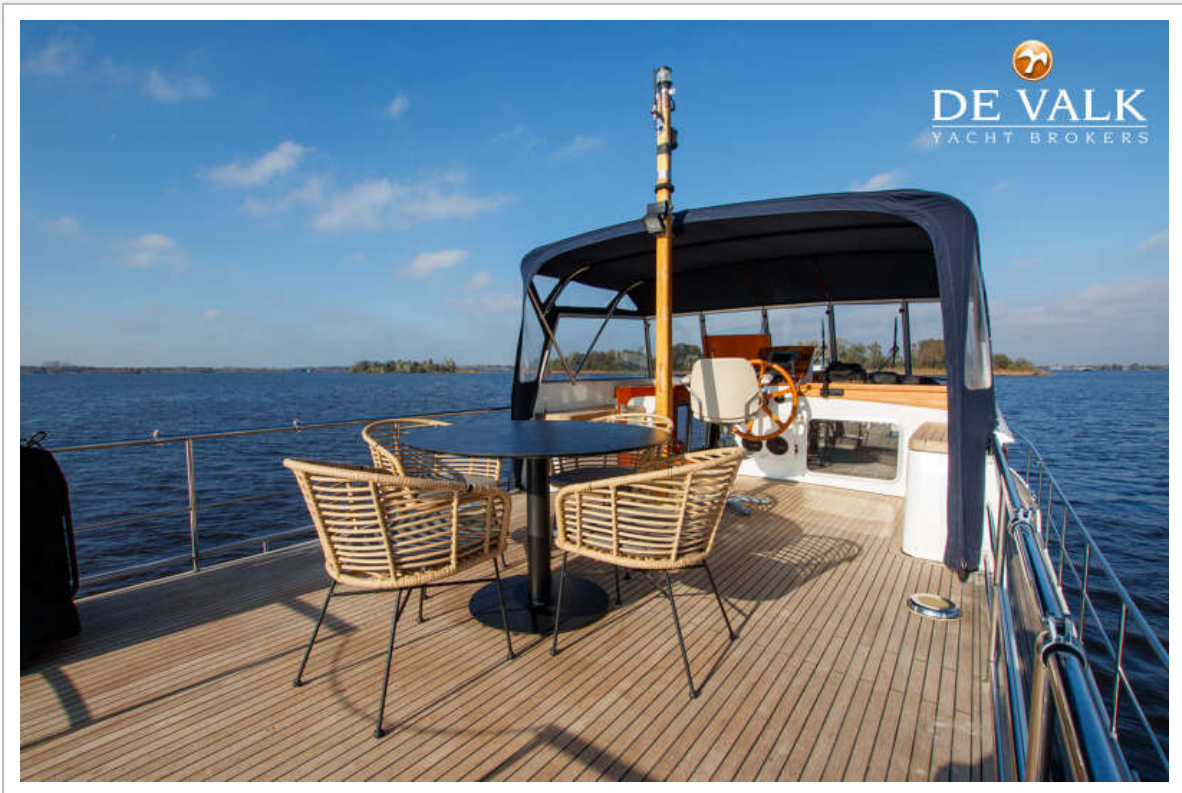
STENTOR 1500



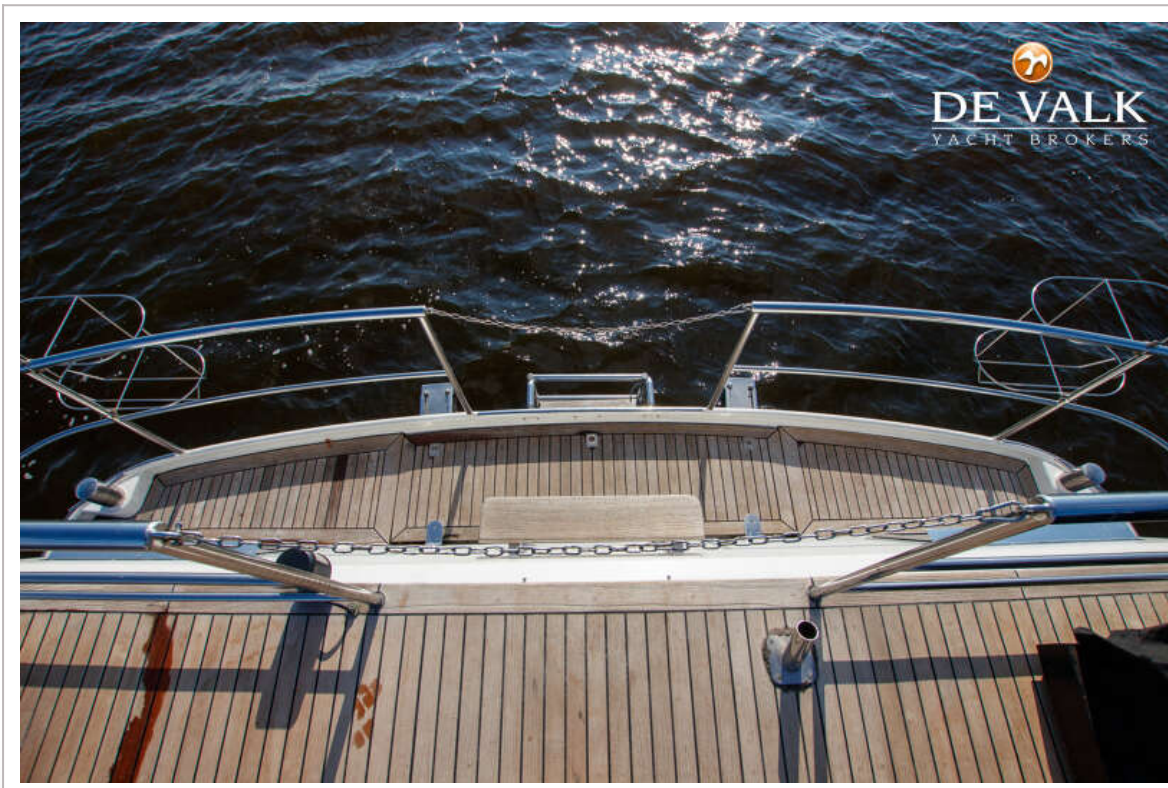
STENTOR 1500



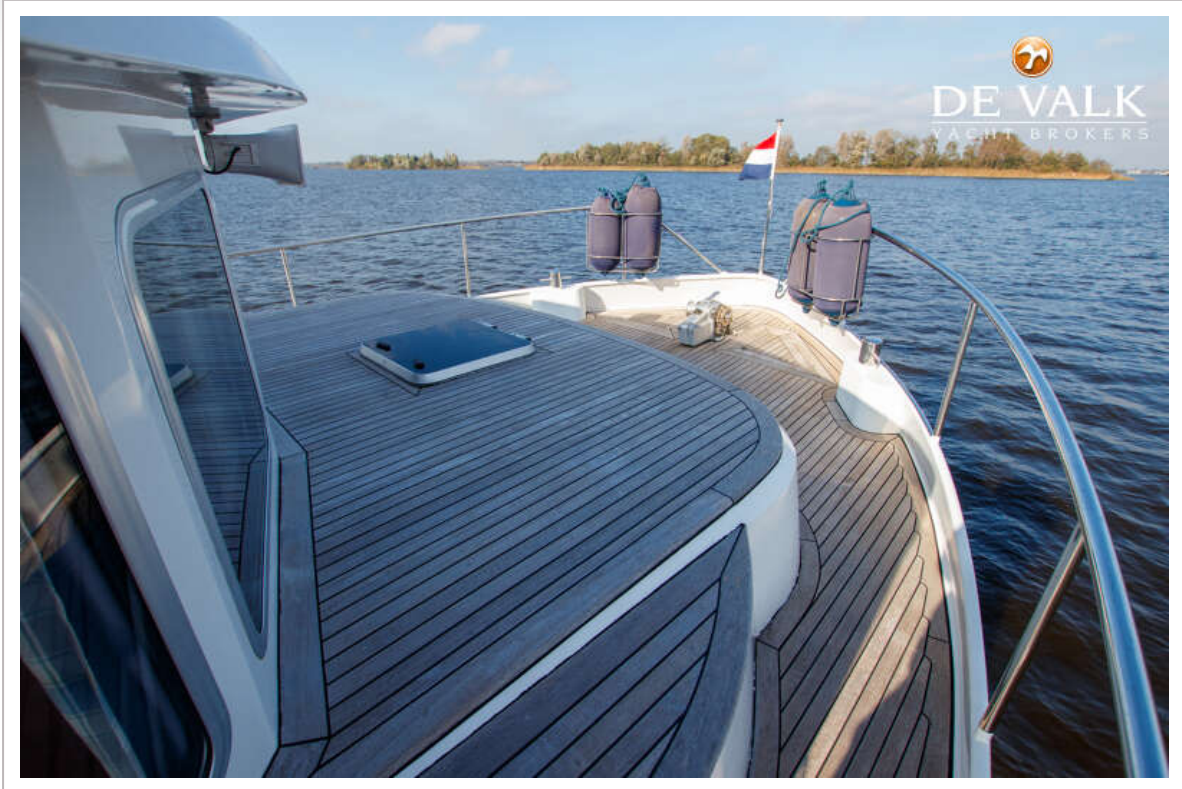
STENTOR 1500



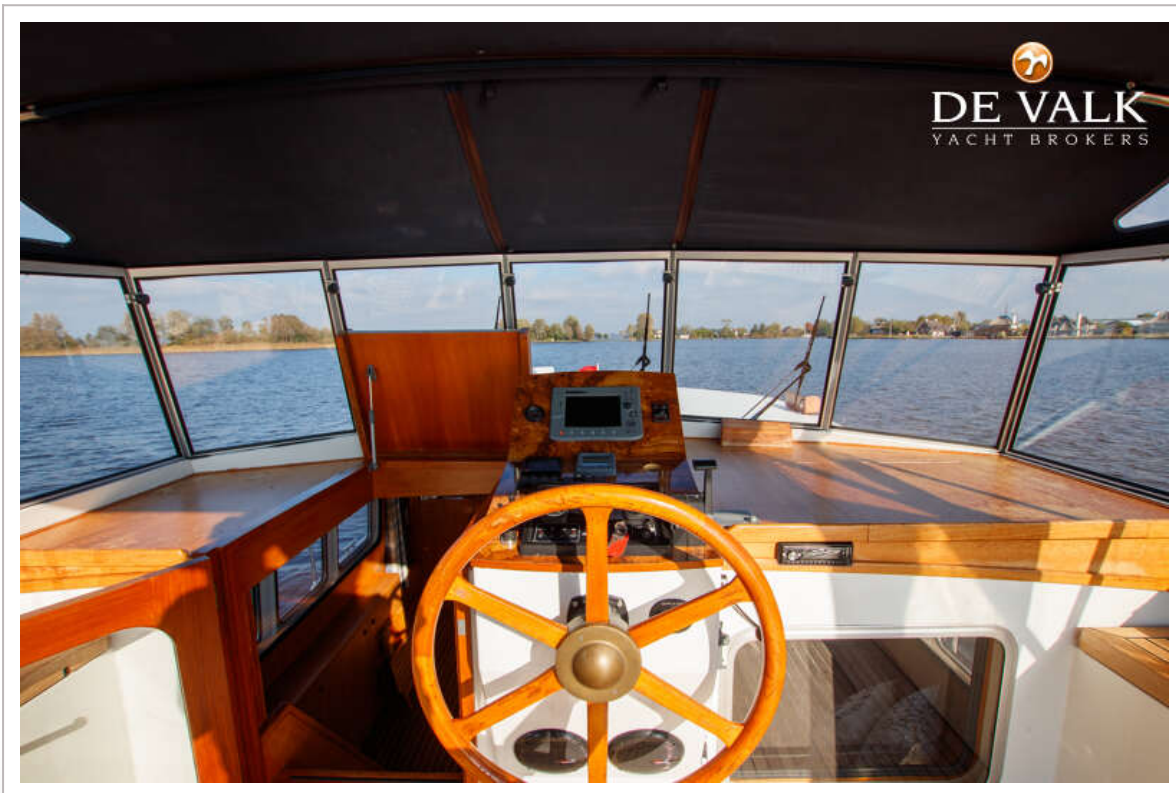
STENTOR 1500



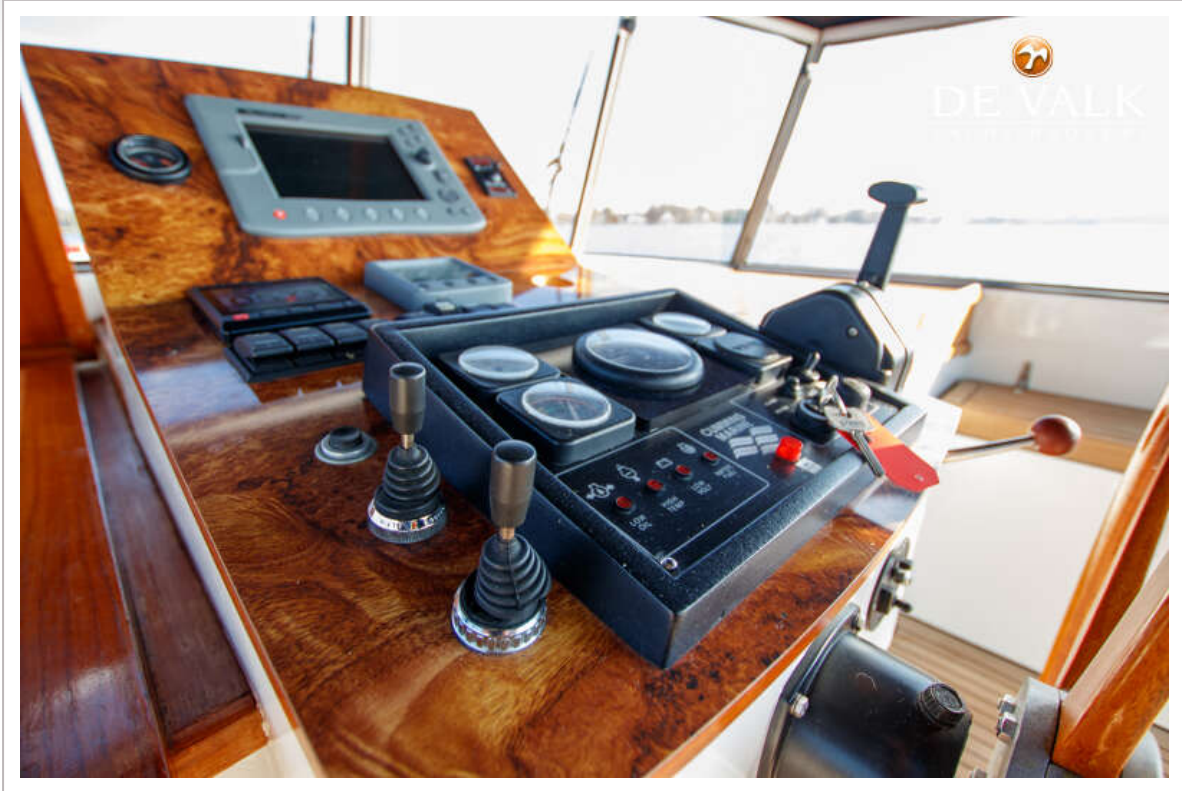
STENTOR 1500



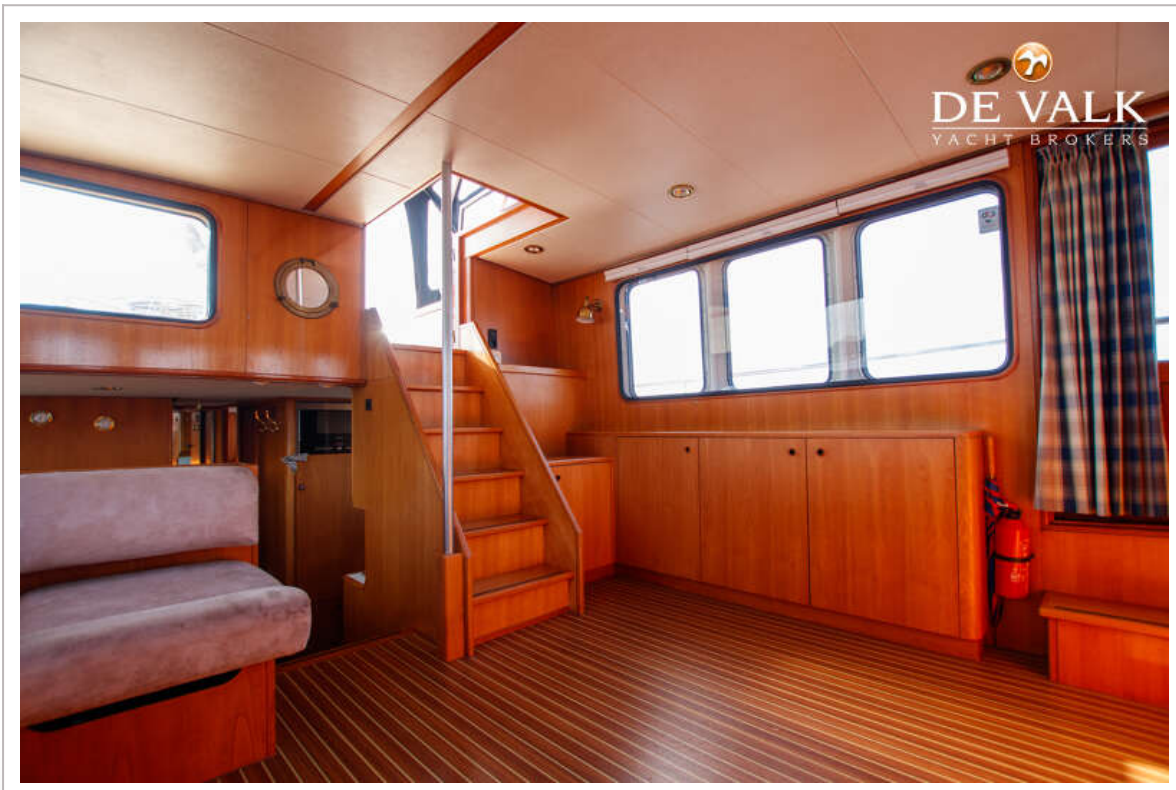
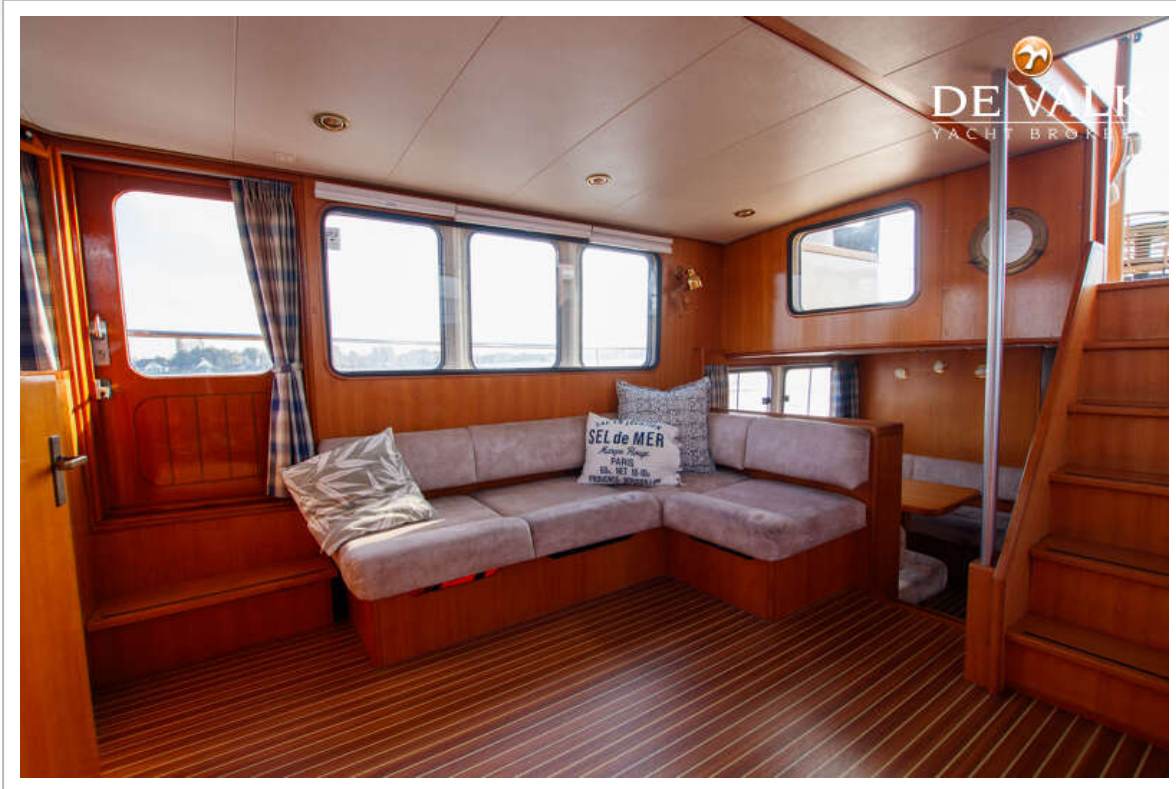
STENTOR 1500



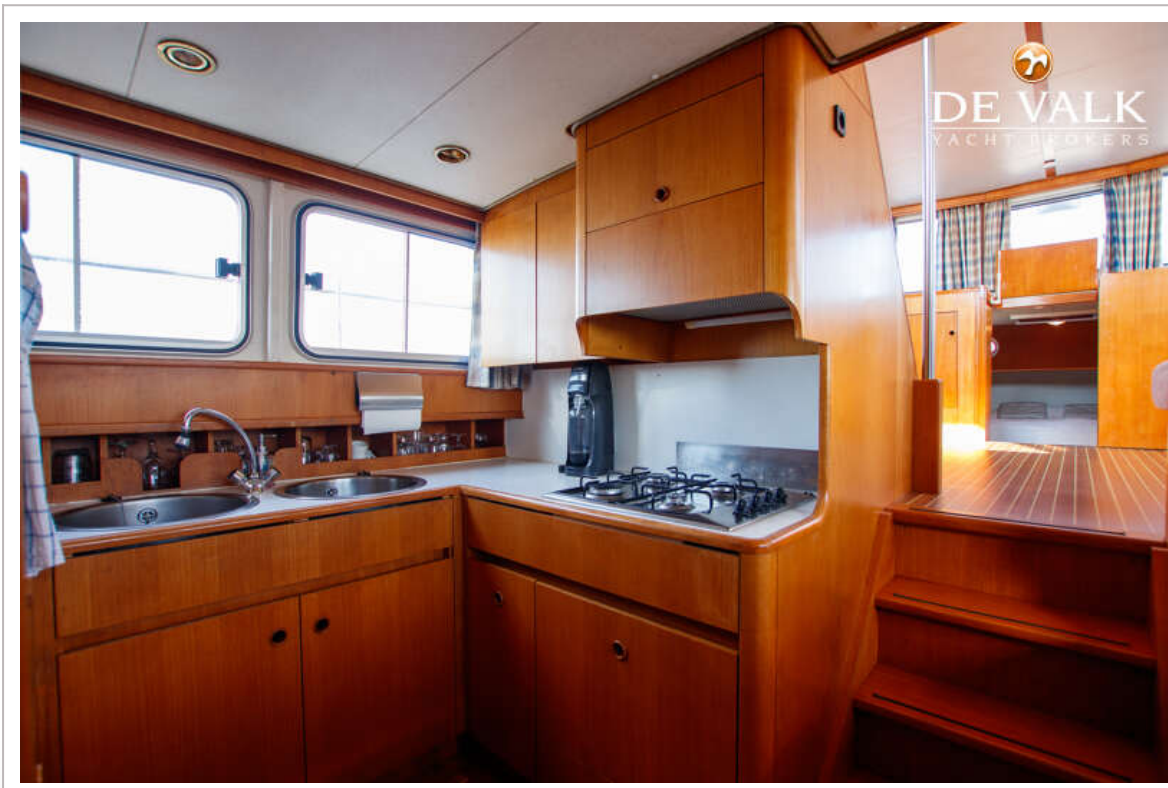
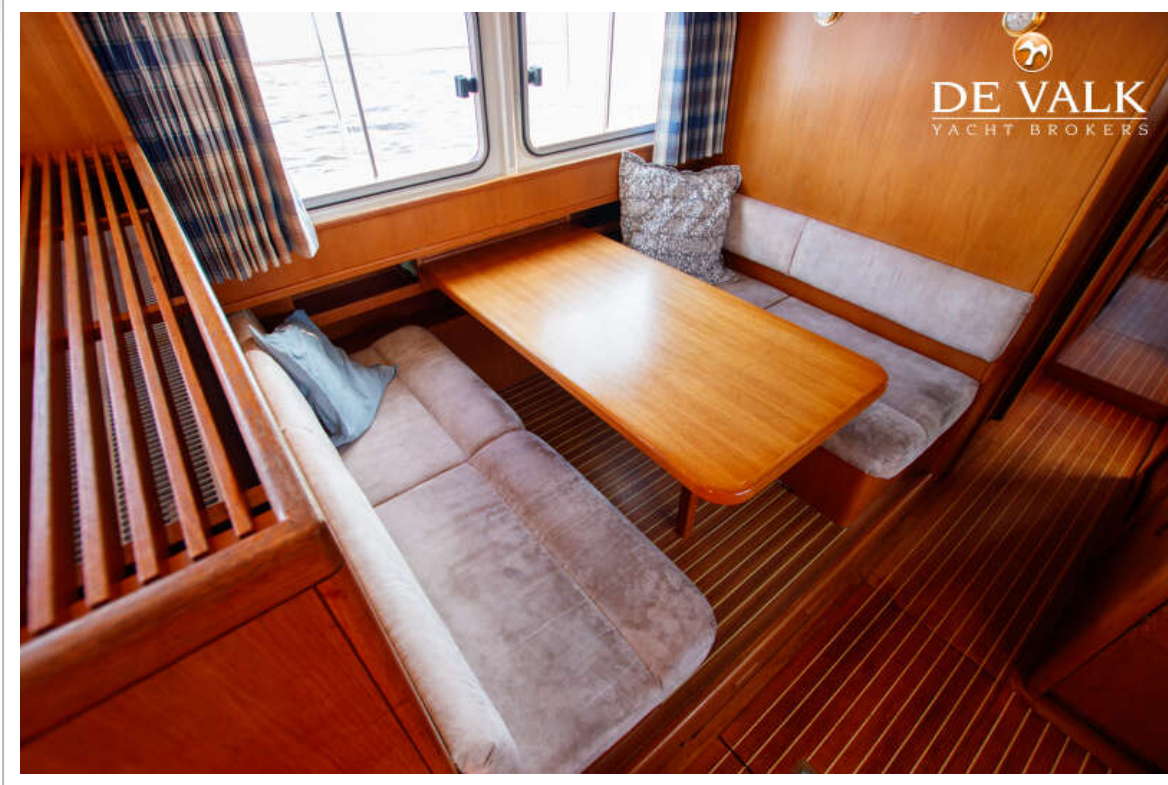
STENTOR 1500



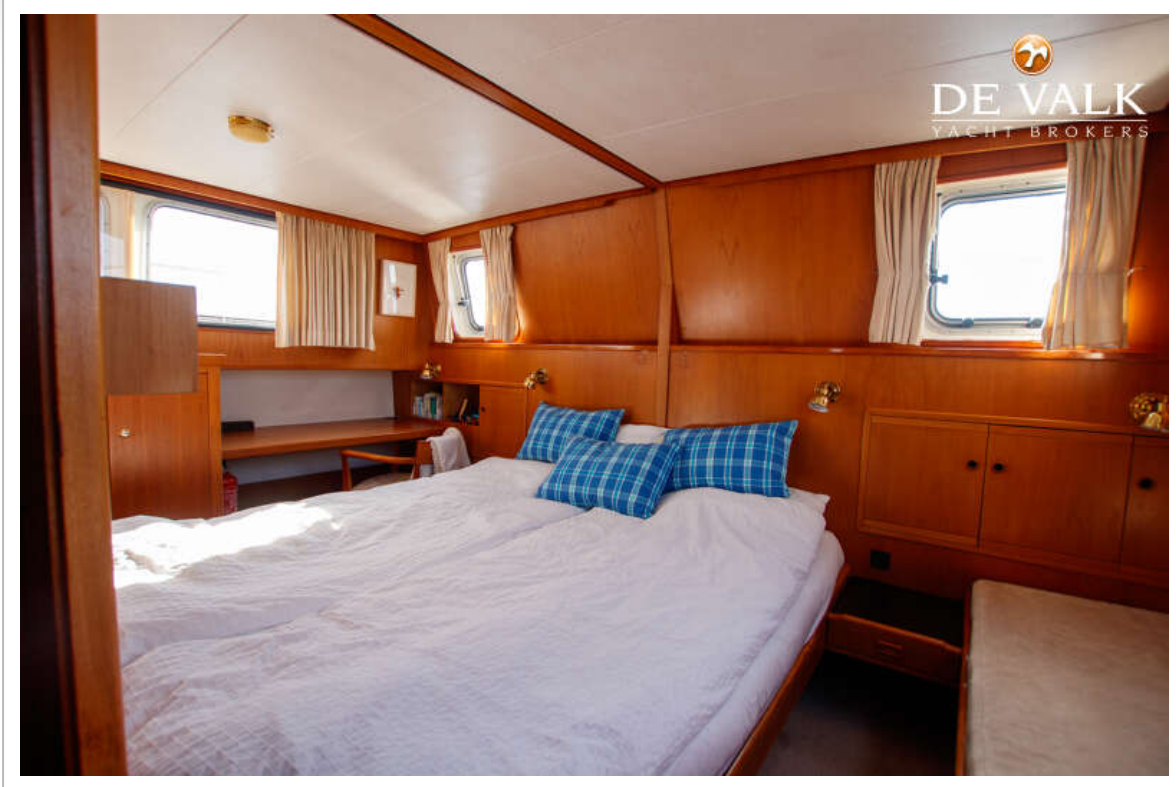
STENTOR 1500



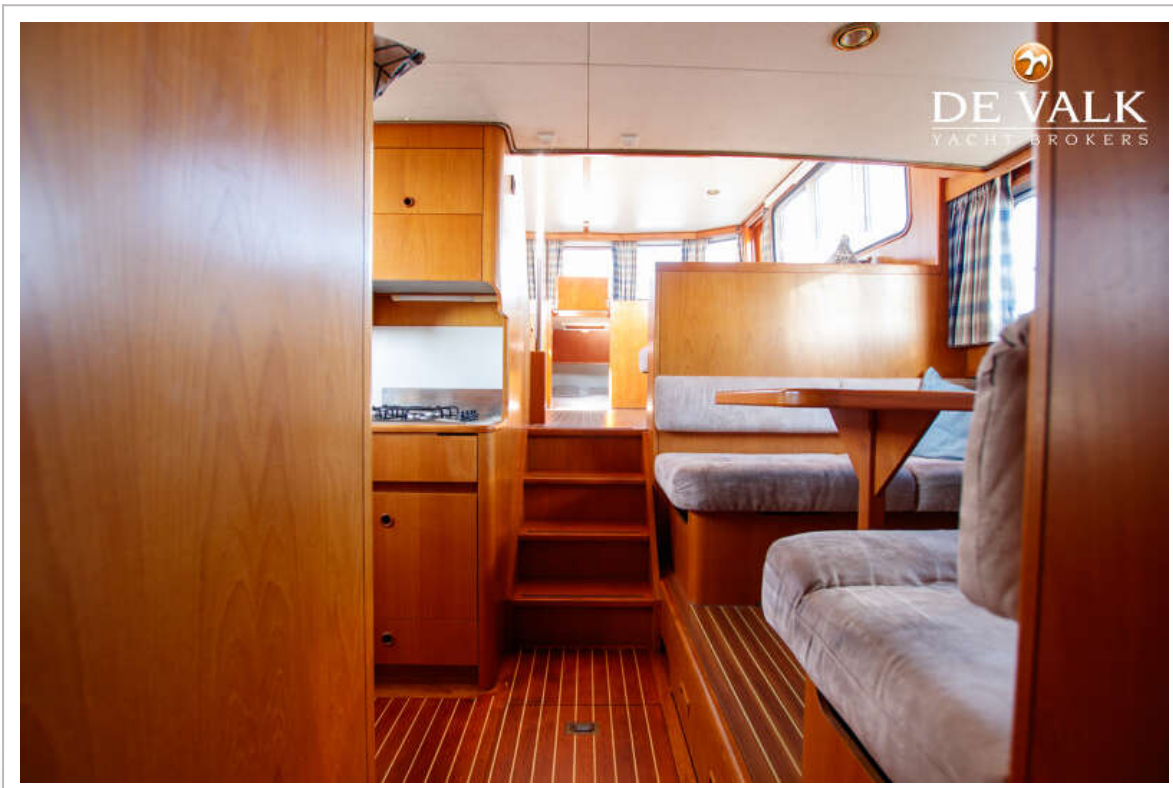
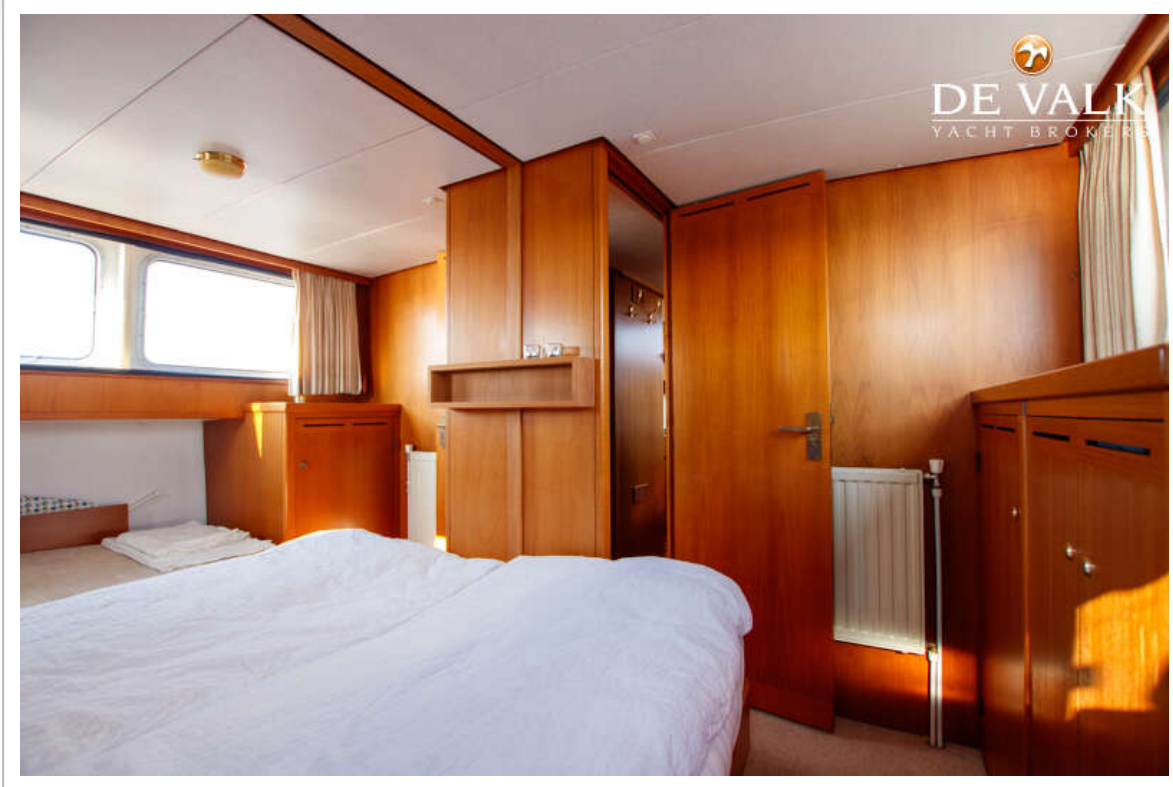
STENTOR 1500



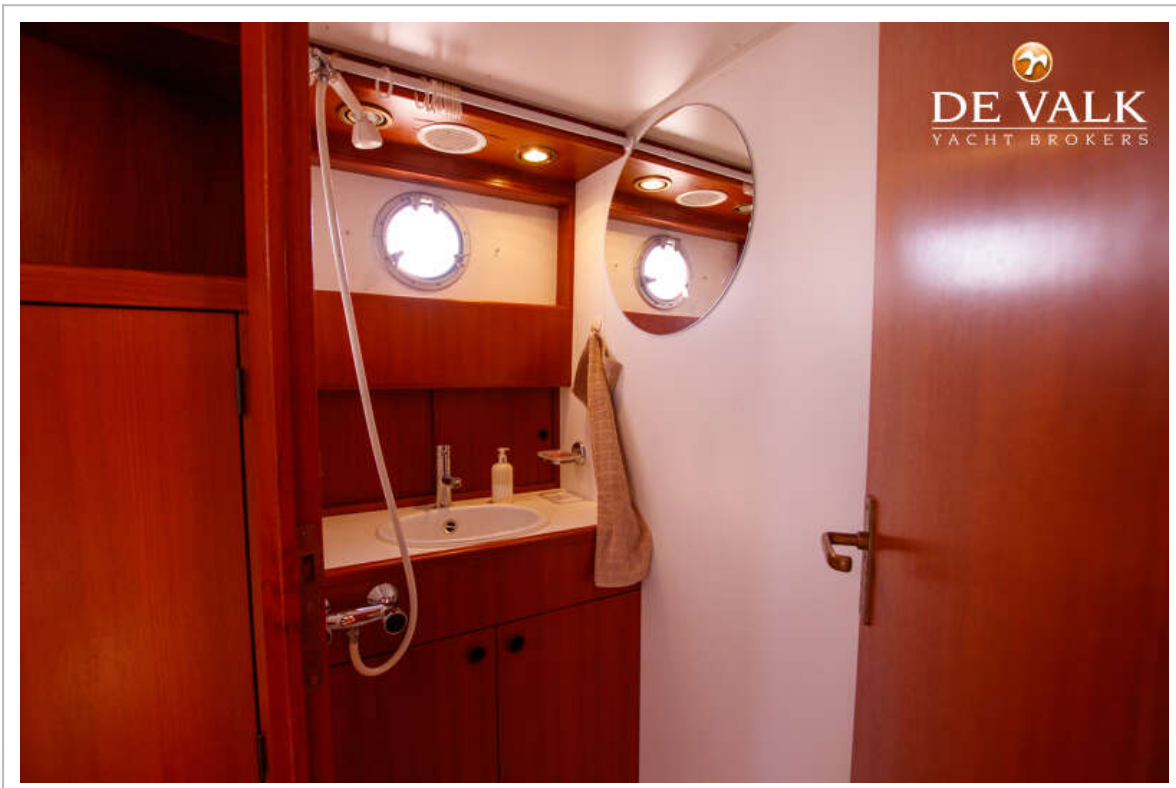
STENTOR 1500



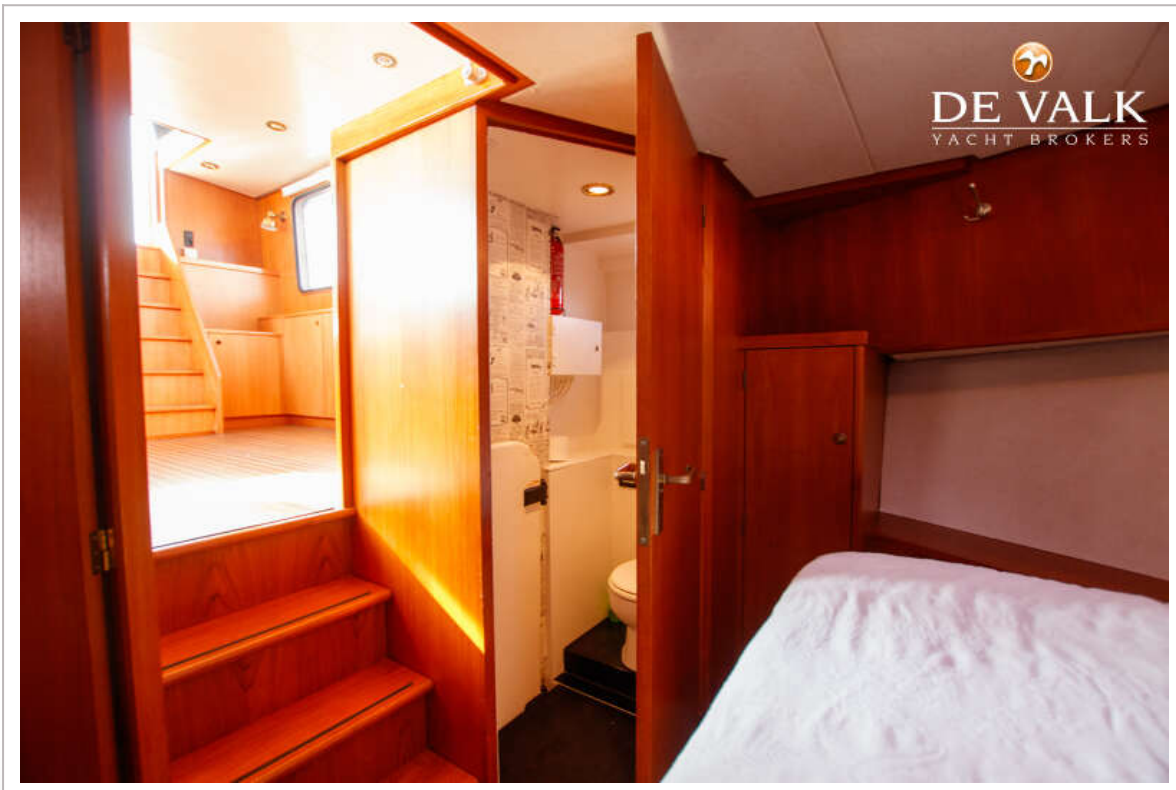
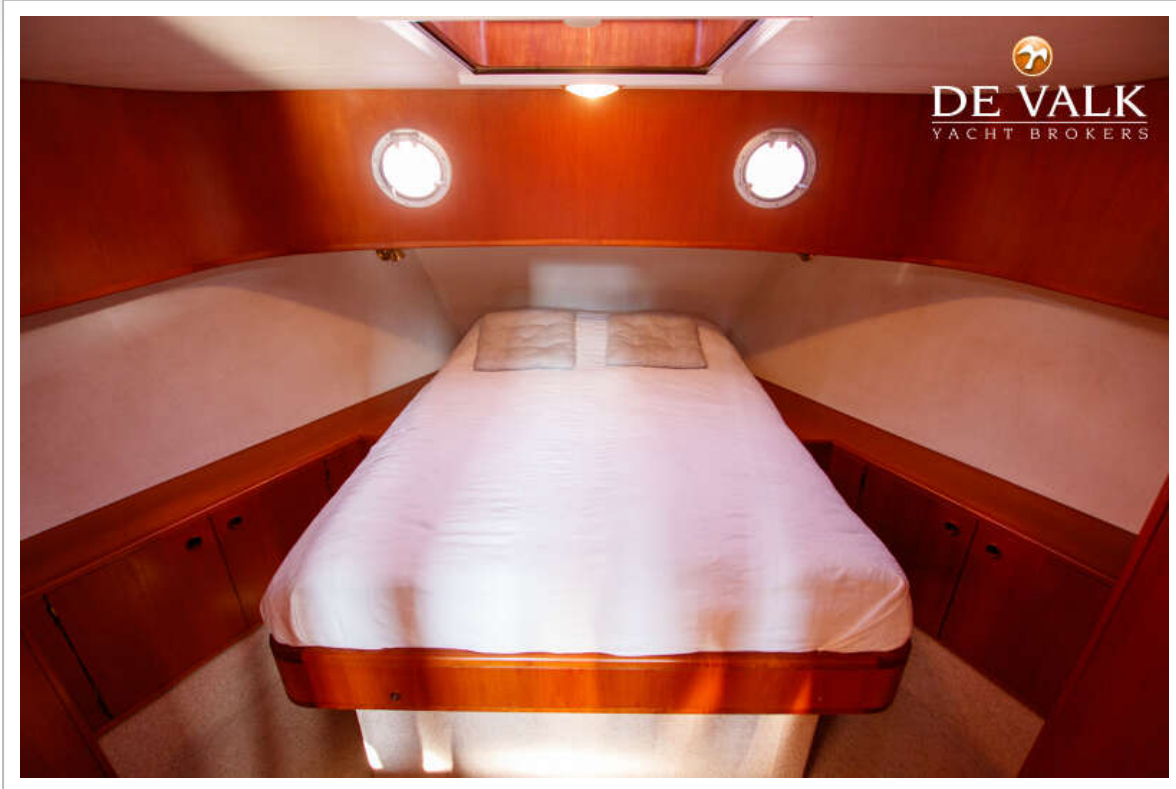
STENTOR 1500



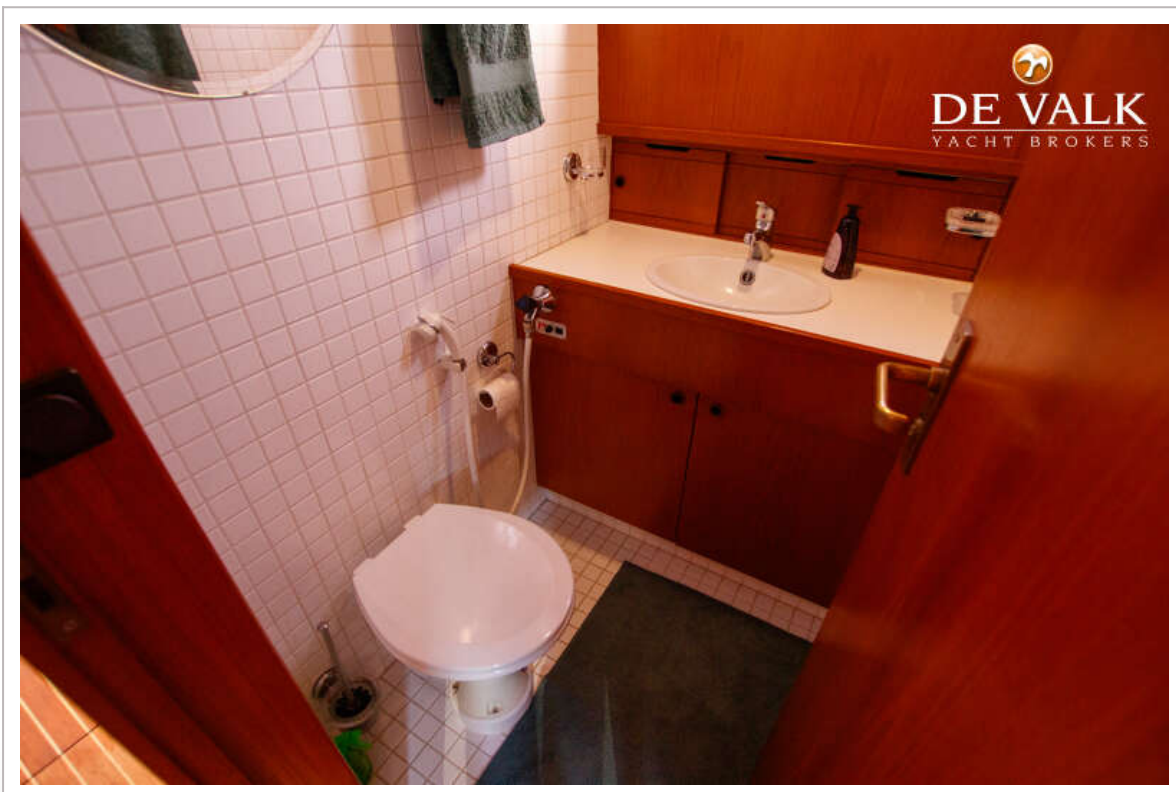
STENTOR 1500



STENTOR 1500



STENTOR 1500



STENTOR 1500

