



PRINCESS V42



PRINCESS V42

BROKER'S COMMENTS

This elegant Princess V42 boasts circa 570 engine hours and has been recently serviced. It features a tender garage designed for a Williams jet rib (for example), complete with a launch/recovery system. Upgrades include new house batteries, windscreen wipers, and a freshly resprayed helm. The package also includes winter covers for the cockpit, bow cushions, and sunroof. Perfectly maintained and ready for new adventures. Don't miss this opportunity to own a stunning Princess V42. Contact us today!

Sjoerd Paddenburg

SPECIFICATIONS

Dimensions	13.56 x 3.99 x 1.07 (m)	Builder	Princess Yachts
Built	2011	Cabins	2
Material	GRP	Berths	4
Engine(s)	2 x Volvo Penta D6-370 diesel	Hp/Kw	2 x 370.00 (hp), 272.32 (kw)
Asking price	€ 281.500 (VAT Paid)	Lying	contact Loosdrecht

CONTACT

Sales office	De Valk Loosdrecht B.V.	Telephone	+31 (0)35 582 90 30
Address	't Breukeleveense Meentje 6 1231LM Loosdrecht / Wijdmeren NL	E-mail	loosdrecht@devalk.nl

DISCLAIMER

These particulars are given in good faith as supplied but cannot be guaranteed.



GENERAL

Model	PRINCESS V42
Type	motor yacht
LOA (m)	13,56
Beam (m)	3,99
Draft (m)	1,07
Year built	2011
Builder	Princess Yachts
Country	United Kingdom
CE norm	B
Hull material	GRP
Hull colour	blue
Hull shape	Fast Displacement Hull
Superstructure material	GRP
Deck material	GRP
Deck finish	non-skid moulded in
Cockpit deck finish	teak
Outside helm position	powersteer Hydraulic

ACCOMMODATION

Cabins	2
Berths	4
Interior	oak Light
Air-conditioning	reverse cycle airco
Dinette	yes
Sliding door to cockpit	yes
Countertop	marble
Sink	stainless steel
Cooker	induction 2 burners
Microwave/oven combi	yes
Fridge	With deep freeze compartment



PRINCESS V42

Hot water system	yes
Owners cabin	double bed
Wardrobe	hanging/drawers/shelves
Bathroom	en suite
Toilet	en suite
Toilet system	electric
Wash basin	in the bathroom
Shower	en suite
Guest cabin 1	twin single
Wardrobe	hanging/drawers/shelves
Bathroom	en suite
Toilet	en suite
Toilet system	electric
Wash basin	in the bathroom
Shower	en suite
Wet bar	yes
Tender garage	With launch and recovery system

MACHINERY

No of engines	2
Make	Volvo Penta
Type	D6-370
HP	370
kW	272.32
Fuel	diesel
Engine hours	Ca. 570
Drive	stern
Bowthruster	electric
Sternthruster	electric
Generator	Onan 7kW
Start battery	2x 120 Ah



Service battery	2x 120 Ah (2024)
Battery charger	yes
Shorepower	with cable
Trimtabs	Electric/hydraulic

NAVIGATION

Compass	yes
VHF	yes
Autopilot	Raymarine ST6002
Radar	Raymarine Quantum Q24C
Plotter/GPS	Raymarine Axiom 12 Pro-S (2019)
AIS transceiver	Raymarine AIS700 Class B+
Searchlight	With remote control

EQUIPMENT

Boarding ladder	Foldaway
Gangway	Hydraulic
Deck shower	Hot and cold water
Anchor	Delta
Windlass	electrical With remote and helm position controls
Wiper	2x



PRINCESS V42



PRINCESS V42



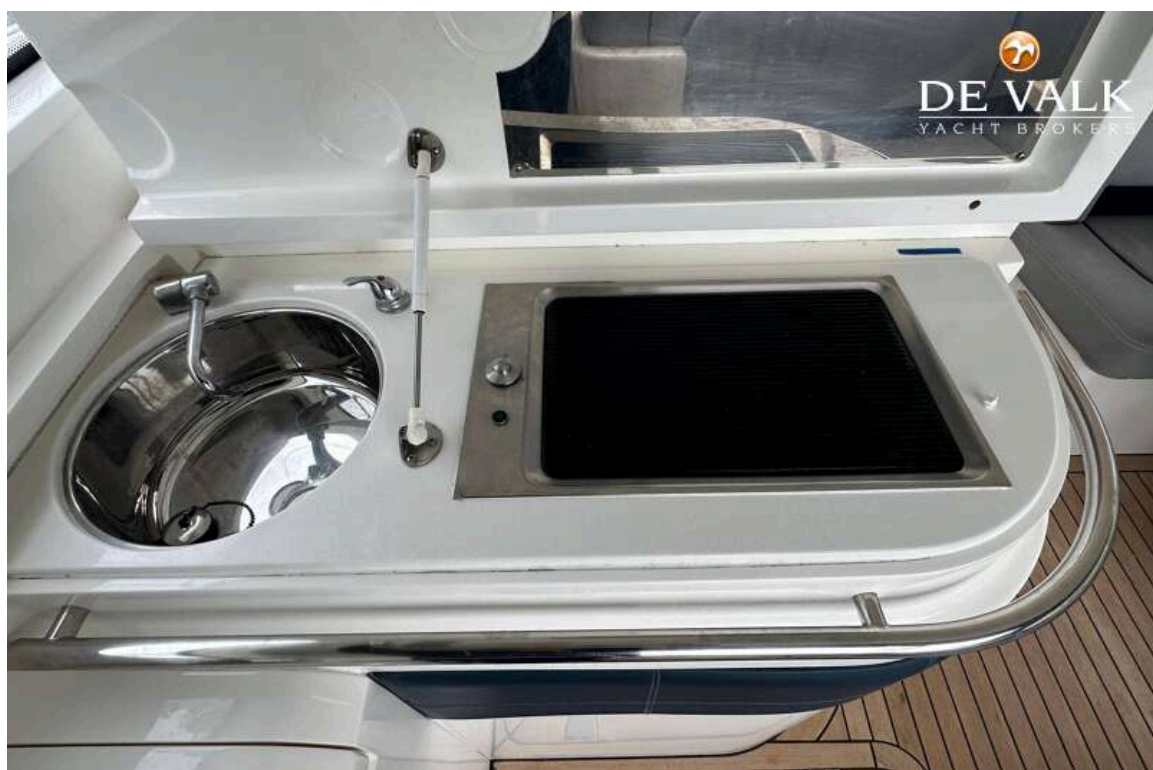
PRINCESS V42



PRINCESS V42



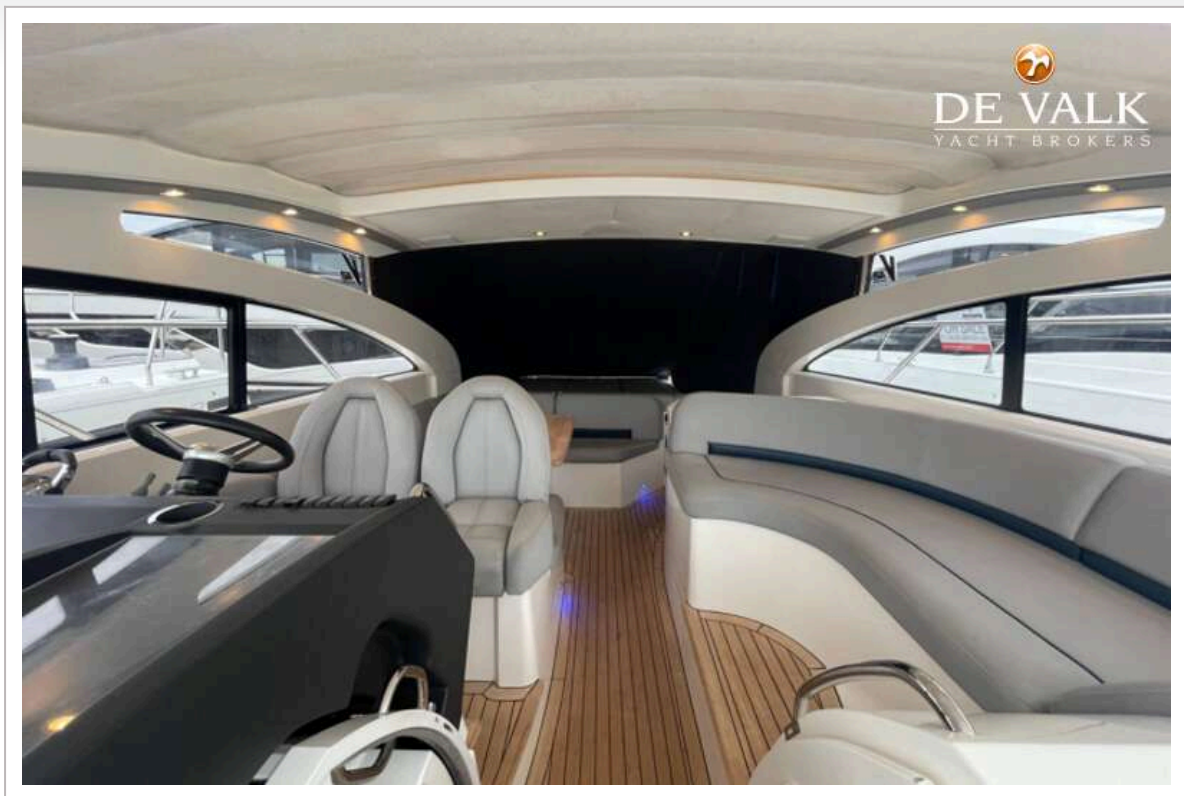
PRINCESS V42



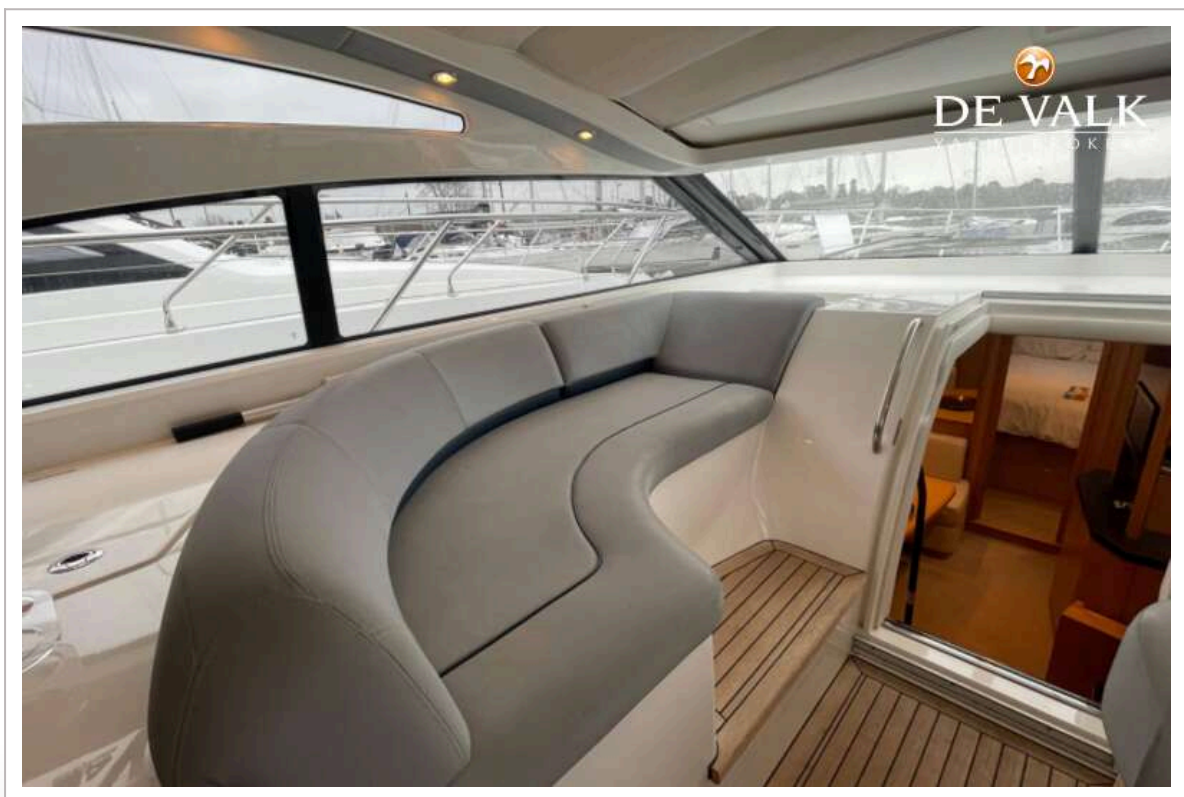
PRINCESS V42



PRINCESS V42



PRINCESS V42



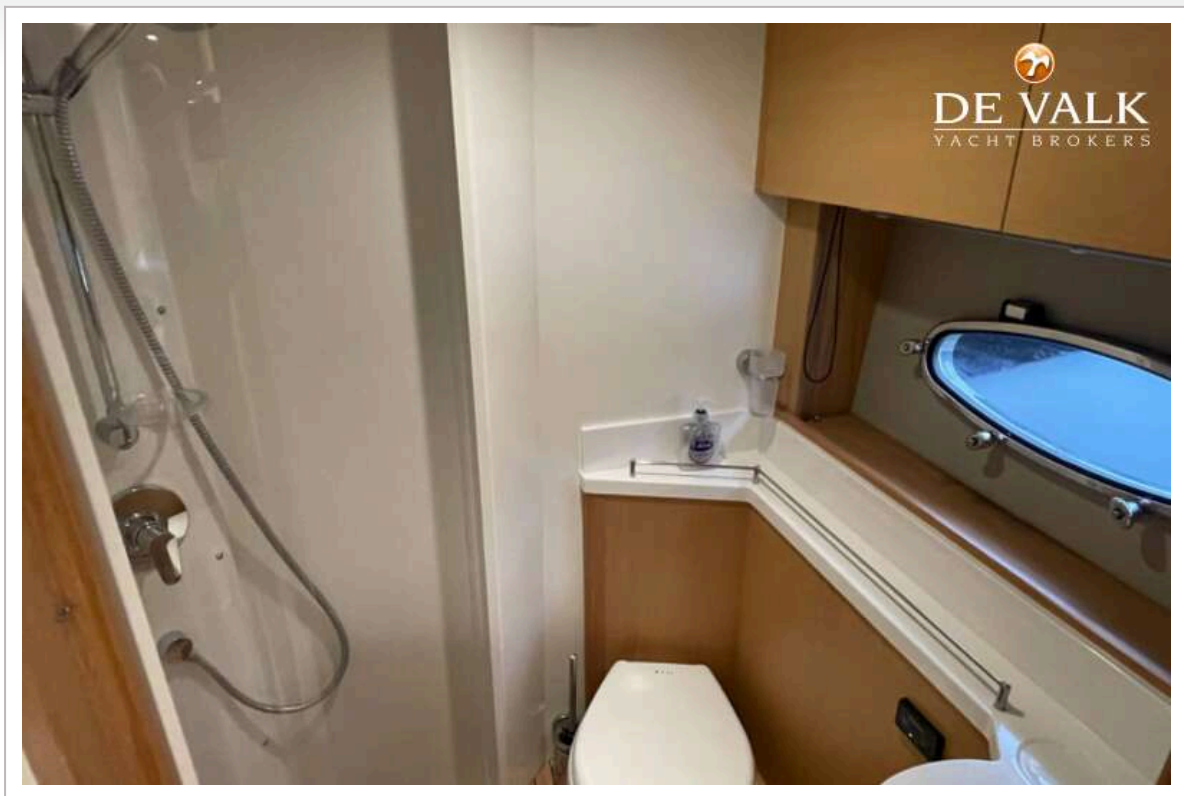
PRINCESS V42



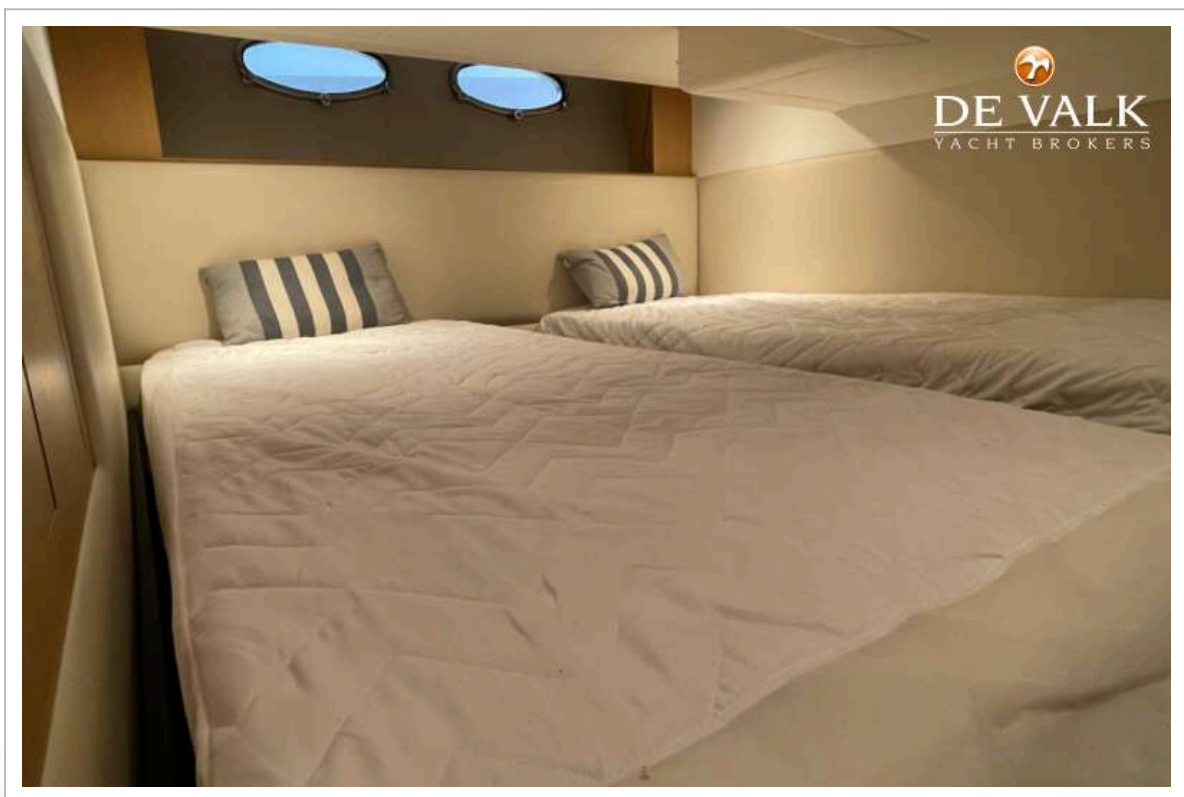
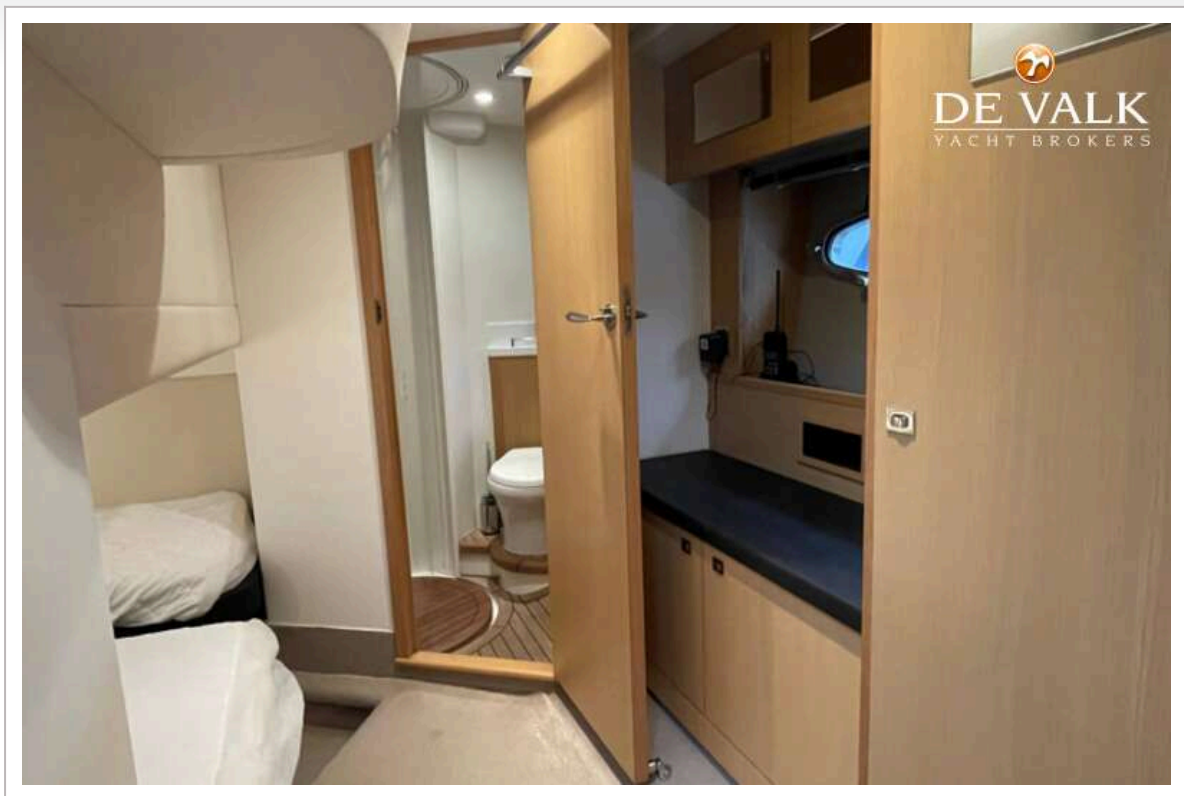
PRINCESS V42



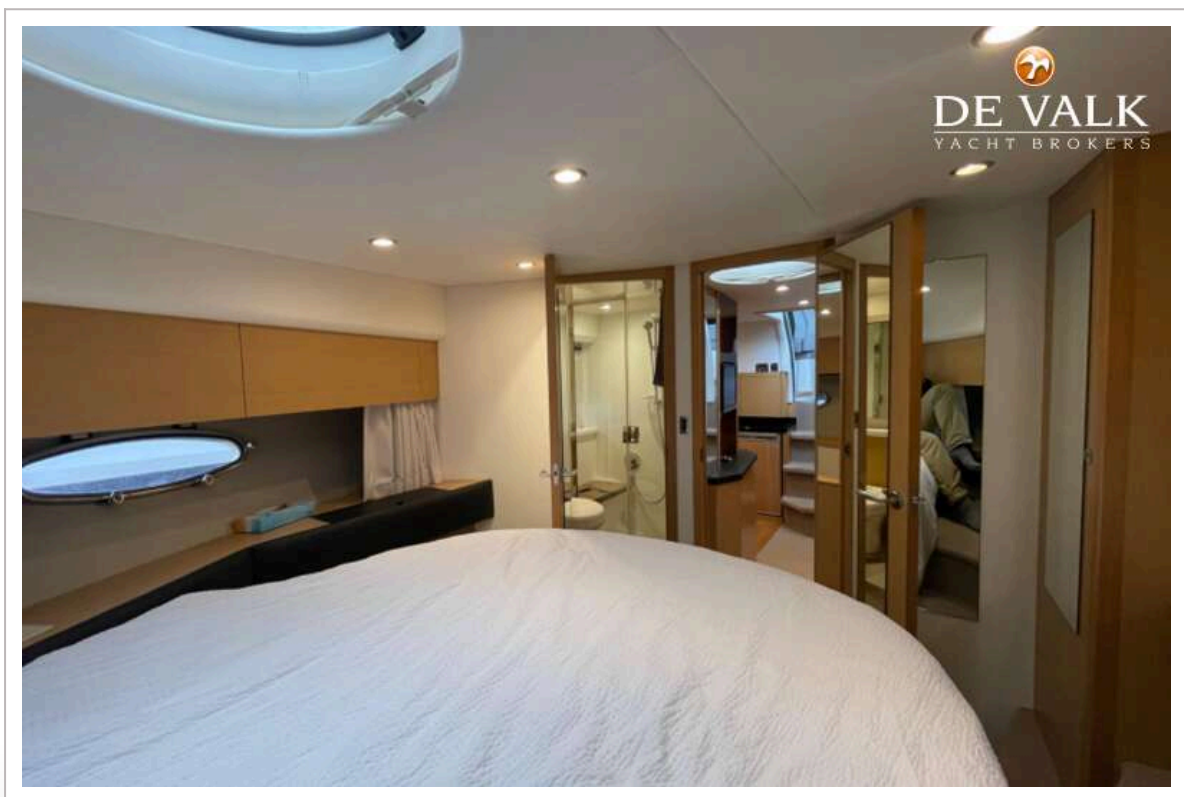
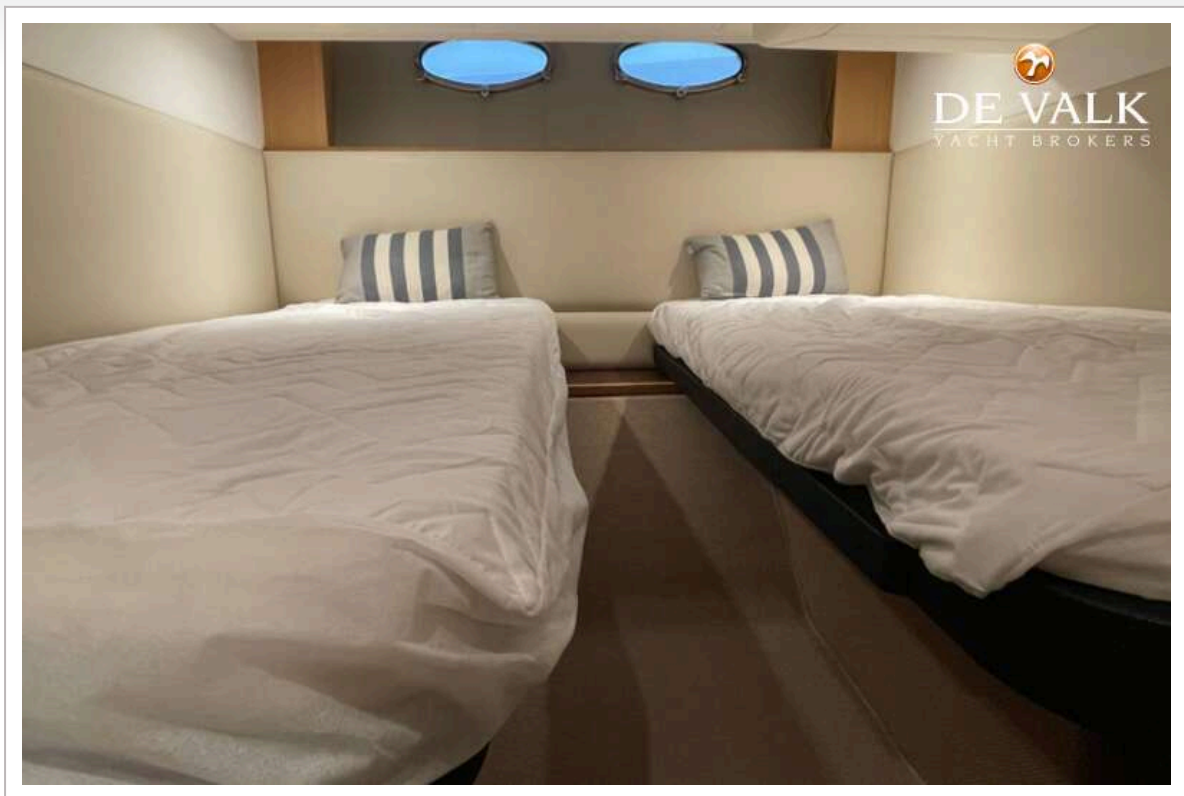
PRINCESS V42



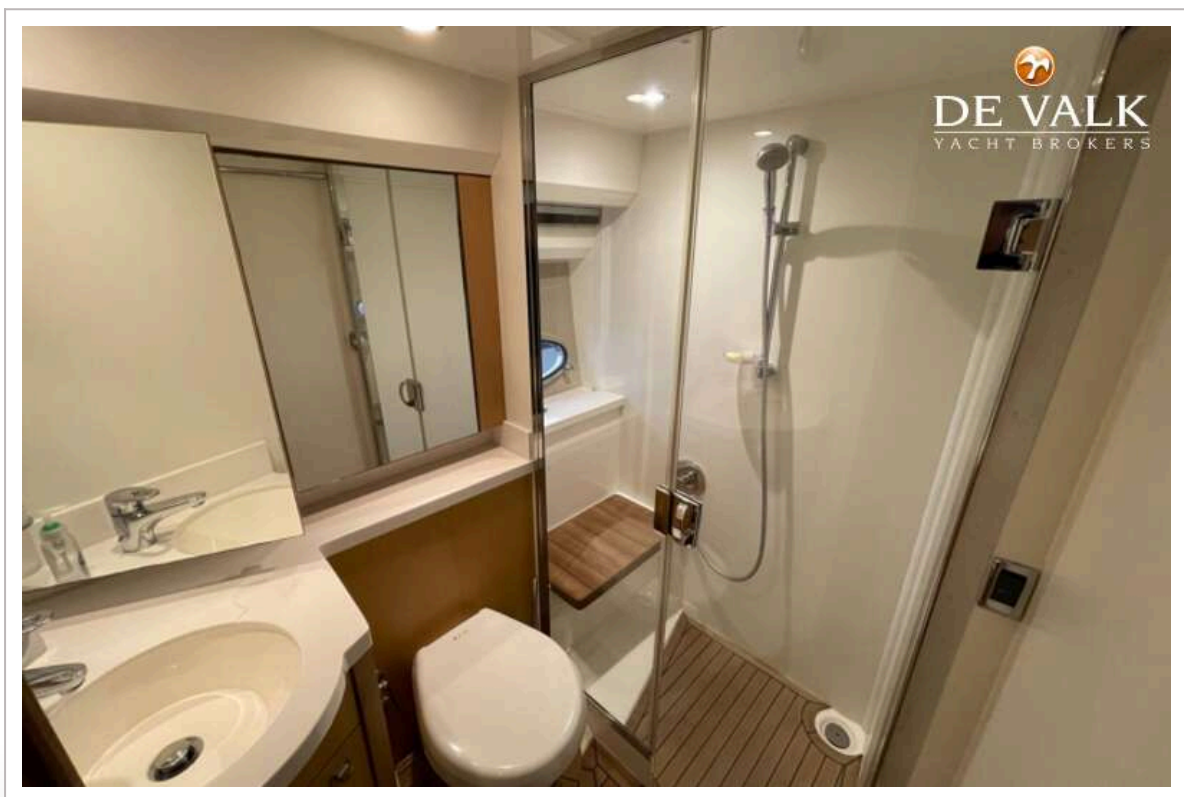
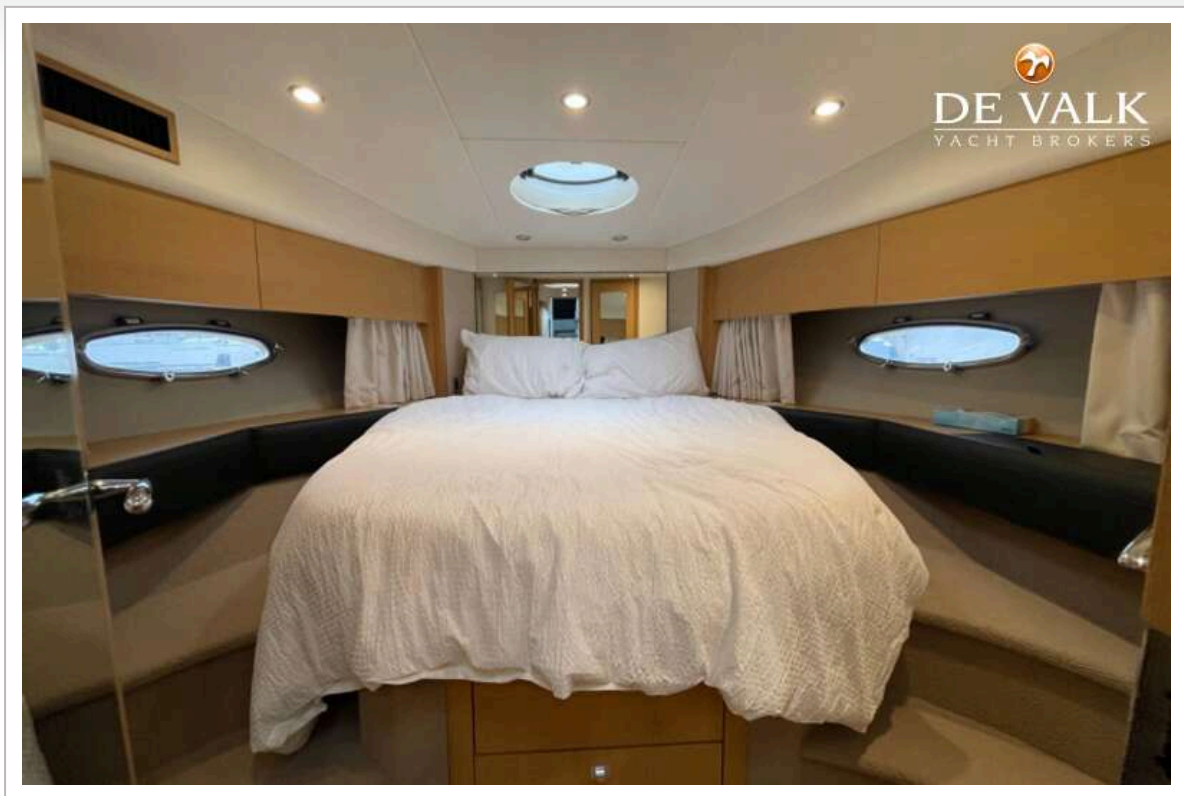
PRINCESS V42



PRINCESS V42



PRINCESS V42



PRINCESS V42

