



KEMPERS EXCELLENT 65

BROKER'S COMMENTS

The motor yacht (built in 1993) was completely restored in 2021/22 by an experienced shipyard in Bremen (Lesum). The shipyard can confirm all details or prove the work orders, the hours, as well as material etc. (costs approx. Costs approx. 500,000 euros). The outer skin (6 mm steel), newly covered with stainless steel in the anchor locker. The 'entire' teak deck was completely renewed and much more.

Hartmut Ross

SPECIFICATIONS

Dimensions	19.75 x 4.92 x 1.35 (m)	Builder	Kempers
Built	1993	Cabins	3
Material	Steel	Berths	6
Engine(s)	2 x Volvo Penta TAMD-71B diesel	Hp/Kw	2 x 370.00 (hp), 272.32 (kw)
Asking price	€ 695.000 (VAT Paid)	Lying	contact Kiel

CONTACT

Sales office	De Valk Kiel	Telephone	+49 1712312133
Address	Hermann Rennerstrasse 12 22609 Hamburg DE	E-mail	kiel@devalk.nl

DISCLAIMER

These particulars are given in good faith as supplied but cannot be guaranteed.



GENERAL

Model	KEMPERS EXCELLENT 65
Type	motor yacht
LOA (m)	19,75
Beam (m)	4,92
Draft (m)	1,35
Air draft min (m)	4,20
Headroom (m)	2,00
Year built	1993
Builder	Kempers
Country	The Netherlands
Displacement (t)	40
CE norm	B
Hull material	steel
Hull colour	white
Hull thickness (mm)	6
Superstructure material	aluminium
Deck material	steel
Deck finish	teak
Cockpit deck finish	teak
Antifouling (year)	2021
Window frame	aluminium
Window material	double glazing
Portholes	yes
Insulation	rockwool
Flybridge cockpit cover	yes
Radar arch	yes
Mast can be lowered	yes
Fuel tank (litre)	steel 4.500
Level indicator (fuel tank)	yes
Freshwater tank (litre)	GRP 1.400



Level indicator (freshwater)	yes
Blackwater tank (litre)	yes
Level indicator (blackwater)	yes
Wheel steering	hydraulic
More info on paintwork	Polished and waxed

ACCOMMODATION

Cabins	3
Berths	6
Floor	carpet New
Open cockpit	yes
Aft deck	yes
Saloon	yes
Headroom saloon (m)	2,00
Heating	central hot water New 2022
Air-conditioning	yes
Navigation center	yes
Chart table	yes
Aft Cabin	yes
Dinette	yes
Sliding door to aft deck	yes
Galley	yes
Countertop	corian
Sink	yes
Cooker	induction
Oven	yes
Extractor	yes
Microwave/oven combi	+ Airfryer
Fridge	3
Freezer	yes
Hot water system	yes



Water pressure system	New 2020
Dishwasher	yes
Kettle	yes
Coffee maker	yes
Crockery	yes
Owners cabin	French bed
Bed length (m)	2.00 x 1.80
Wardrobe	hanging/drawers/shelves
Bathroom	separate
Toilet	en suite
Toilet system	electric
Wash basin	in the bathroom
Shower	en suite
Guest cabin 1	French bed
Wardrobe	hanging/drawers/shelves
Bathroom	separate
Toilet	en suite
Toilet system	electric
Wash basin	in the bathroom
Shower	en suite
Guest cabin 2	bunk bed
Wardrobe	hanging/drawers/shelves
Washing machine	yes

MACHINERY

No of engines	2
Make	Volvo Penta
Type	TAMD-71B
HP	370
kW	272.32
Fuel	diesel



Maximum speed (kn)	13
Cruising speed (kn)	10
Consumption (l/hr)	20
Engine hours	2900
Engine cooling system	seawater
Engine controls	electrical
Bowthruster	hydraulic With remote control
Sternthruster	hydraulic With remote control
Exhaust	yes
Propeller type	fixed
Propeller blades	4
Electric bilge pump	3
Bilge alarm	yes
Electrical installation	yes
Generator	yes
Batteries	yes
Start battery	4 new 2023
Service battery	12 new 2019 Gel
Battery monitor	yes
Battery charger	yes
Inverter	yes
Shorepower	with cable 2 x
Extra info	New 2021 Novec engine extinguishing system

NAVIGATION

Compass	Flux
Electric compass	yes
Depth sounder/log	yes
VHF	yes
VHF handheld	yes
Autopilot	yes



Rudder angle indicator	yes
Radar/GPS/plotter	yes
Weather receiver	yes
Navtex	yes
PC connection	yes
Wifi antenna	yes
Electronic chart(s)	yes
AIS receiver	yes
AIS transponder	yes
AIS transceiver	yes
Radio receiver	yes
Transmitter	yes
EPIRB	yes
Personal MOB transmitter	yes
Camera	4 x
Navigation lights	yes
Searchlight	New 2023
Loudhailer	yes

EQUIPMENT

Cockpit cover	yes
Winter cover	New 2021
Window cover	yes
Cockpit cushions	yes
Cockpit table	Can be lowered electrically
Cockpit chairs	yes
Bathing platform	yes
Boarding ladder	stainless steel
Deck shower	yes
Anchor	yes
Anchor chain	yes

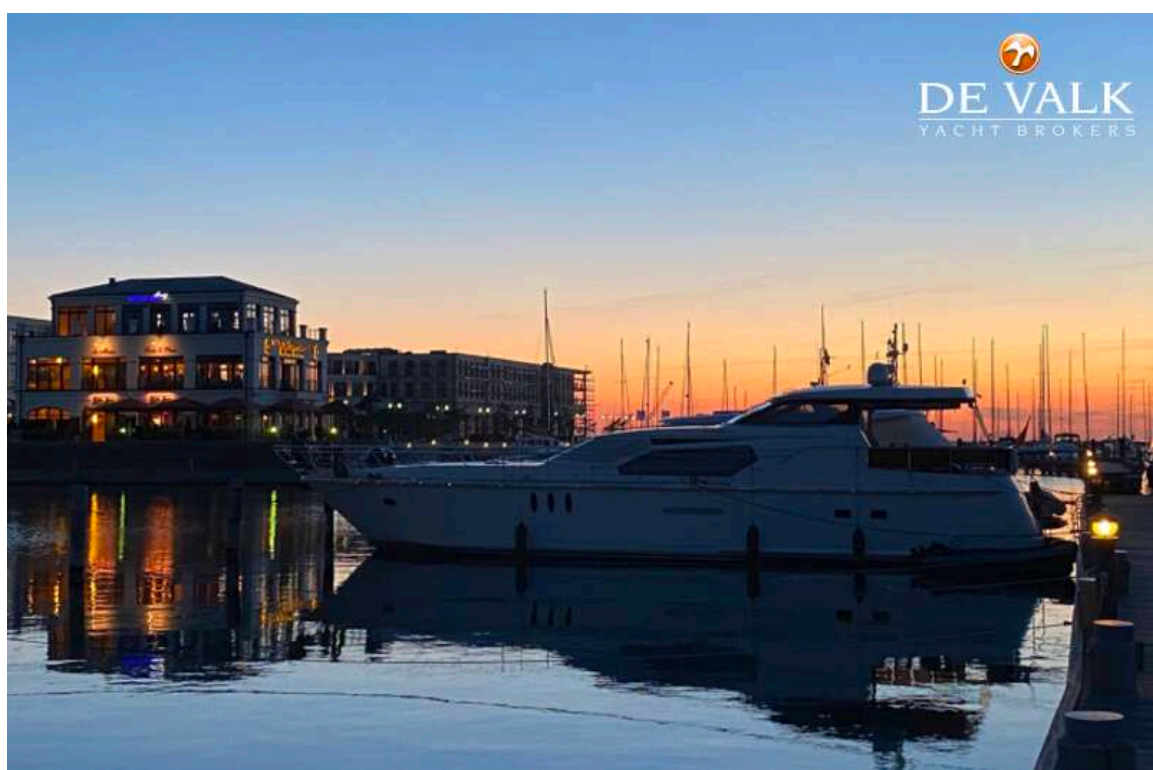


Windlass	hydraulic
Deck wash	yes
Dinghy	New 2020 with road trailer
Outboard	New 2020 Mercury 15 Ps
Davits	stainless steel
Davits controls	electrical
Sea railing	stainless steel
Grab rail (superstructure)	stainless steel
Railing side opening gates	yes
Pushpit	yes
Life raft	yes
Wiper	3 x
Horn	yes
Binocular	yes
Fenders	yes
Mooring lines	yes
Spare parts	yes
Tools	yes
Radio-cd player	yes
Cockpit speakers	yes
Speakers in salon	yes
Clock - barometer	yes

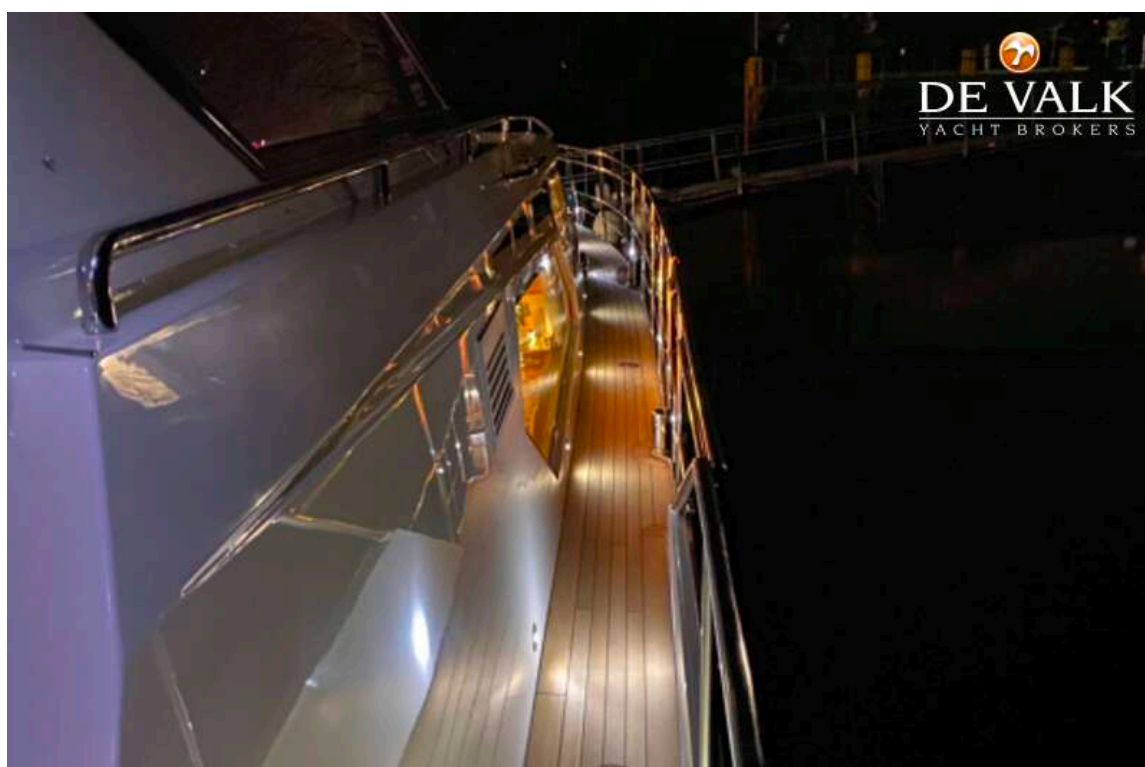








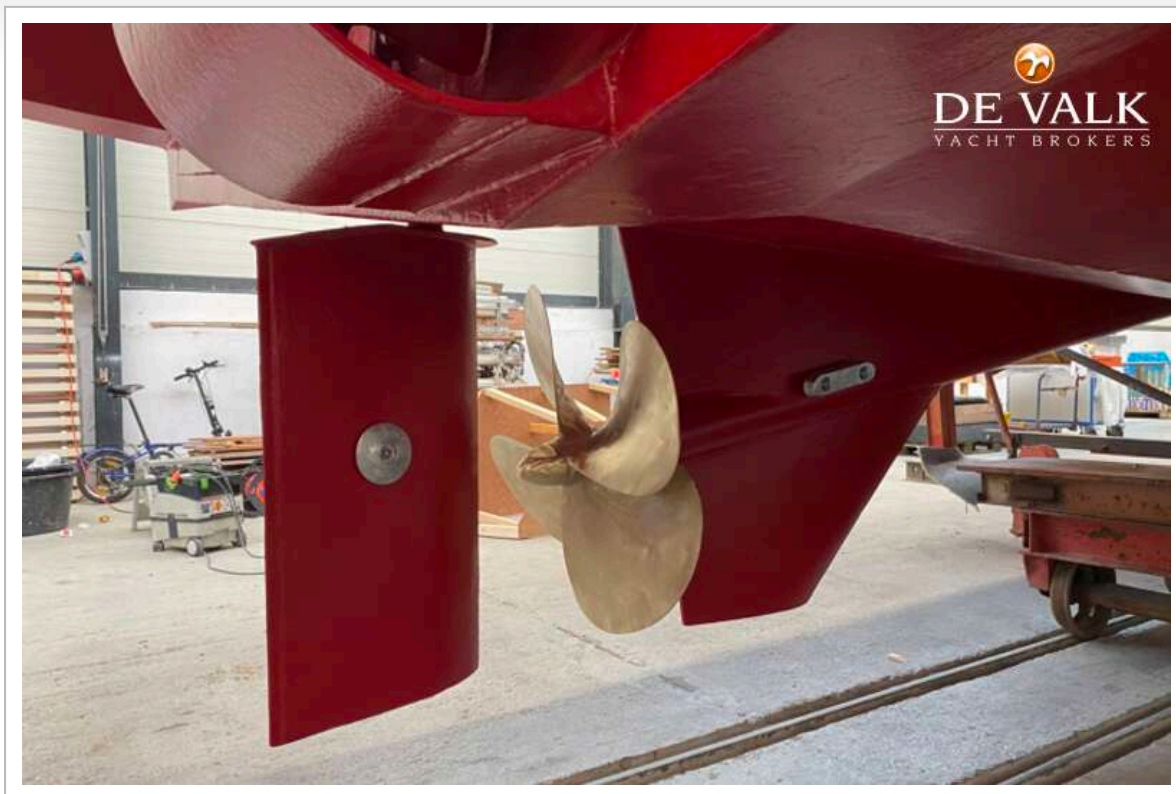
KEMPERS EXCELLENT 65



KEMPERS EXCELLENT 65



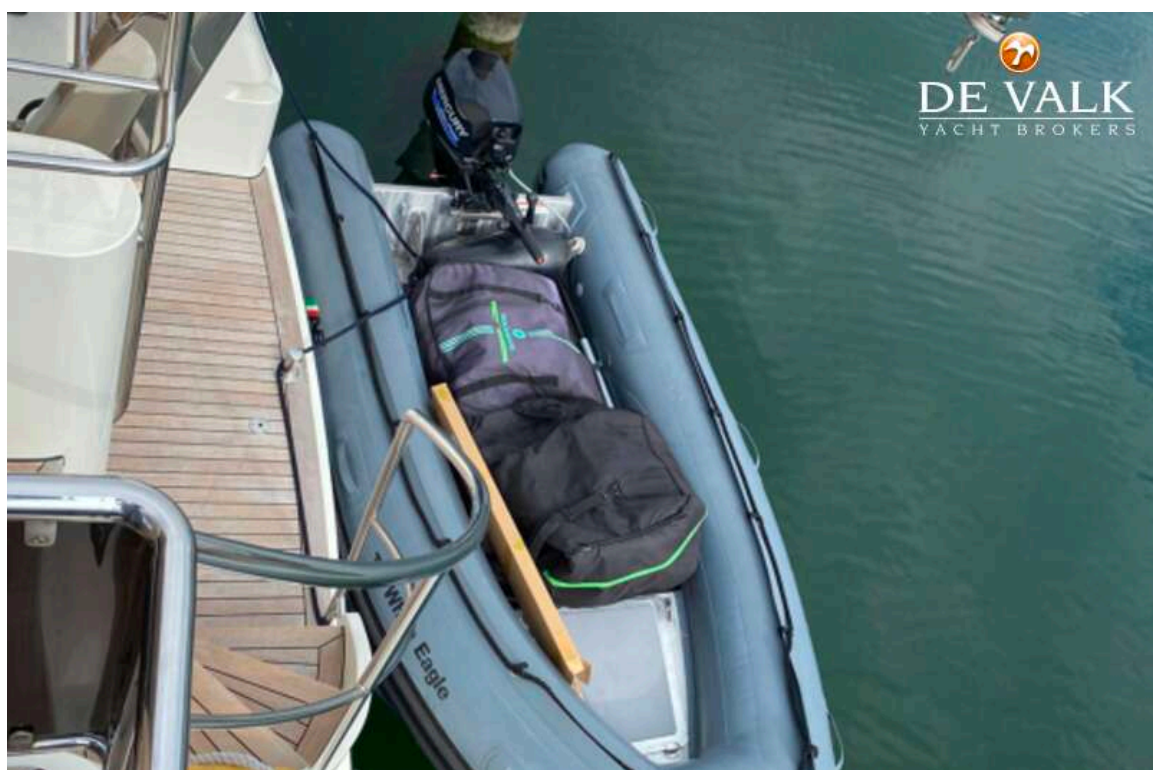
KEMPERS EXCELLENT 65



KEMPERS EXCELLENT 65



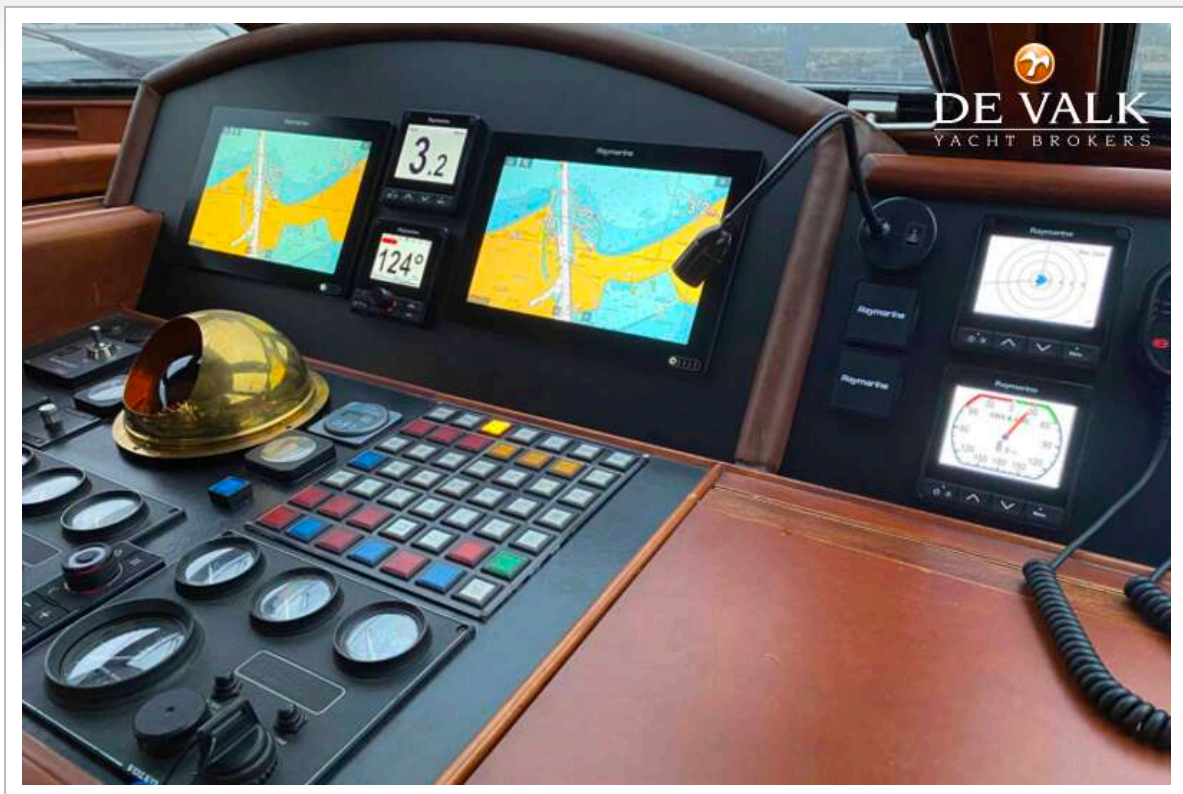
KEMPERS EXCELLENT 65



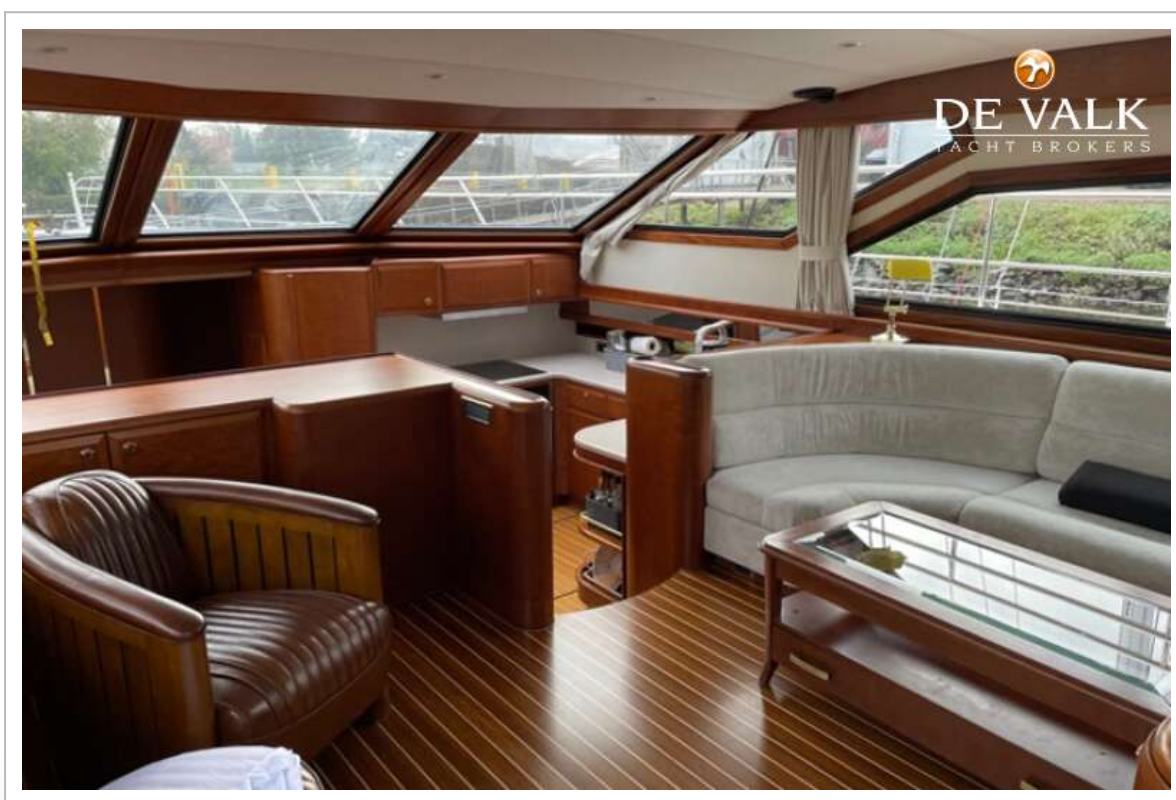
KEMPERS EXCELLENT 65



KEMPERS EXCELLENT 65



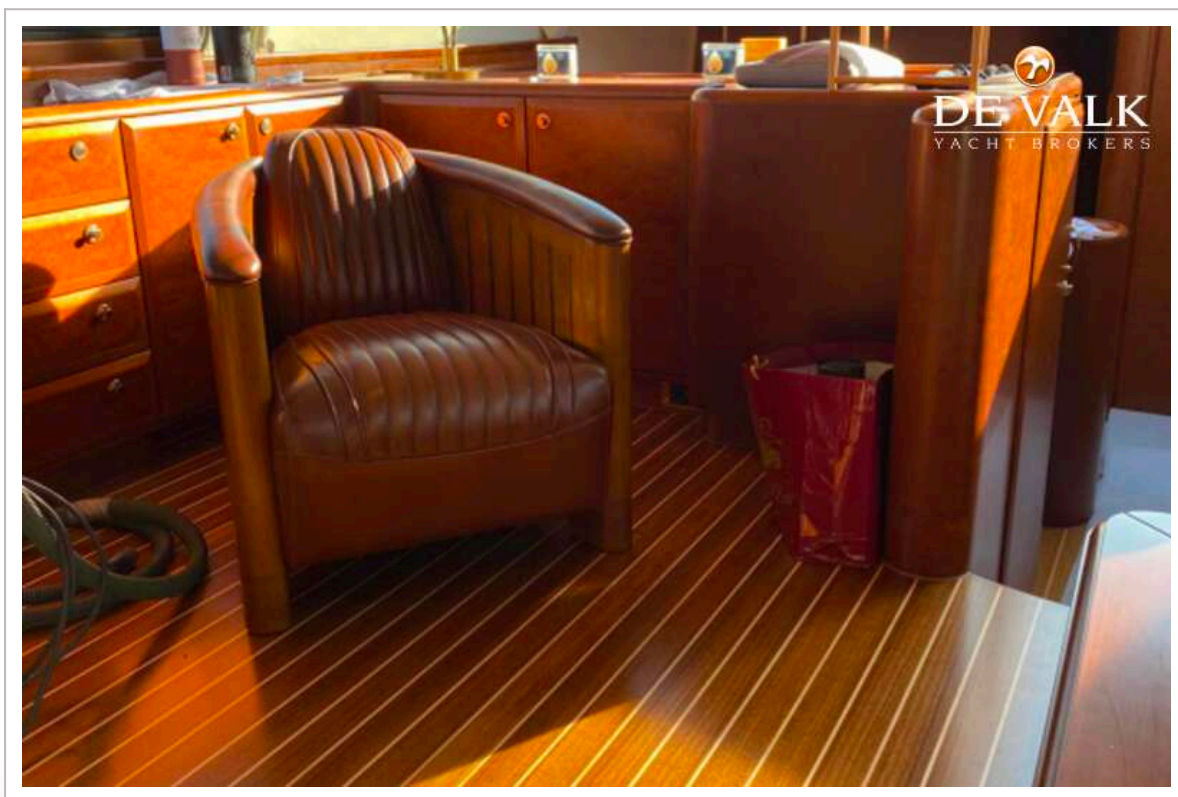
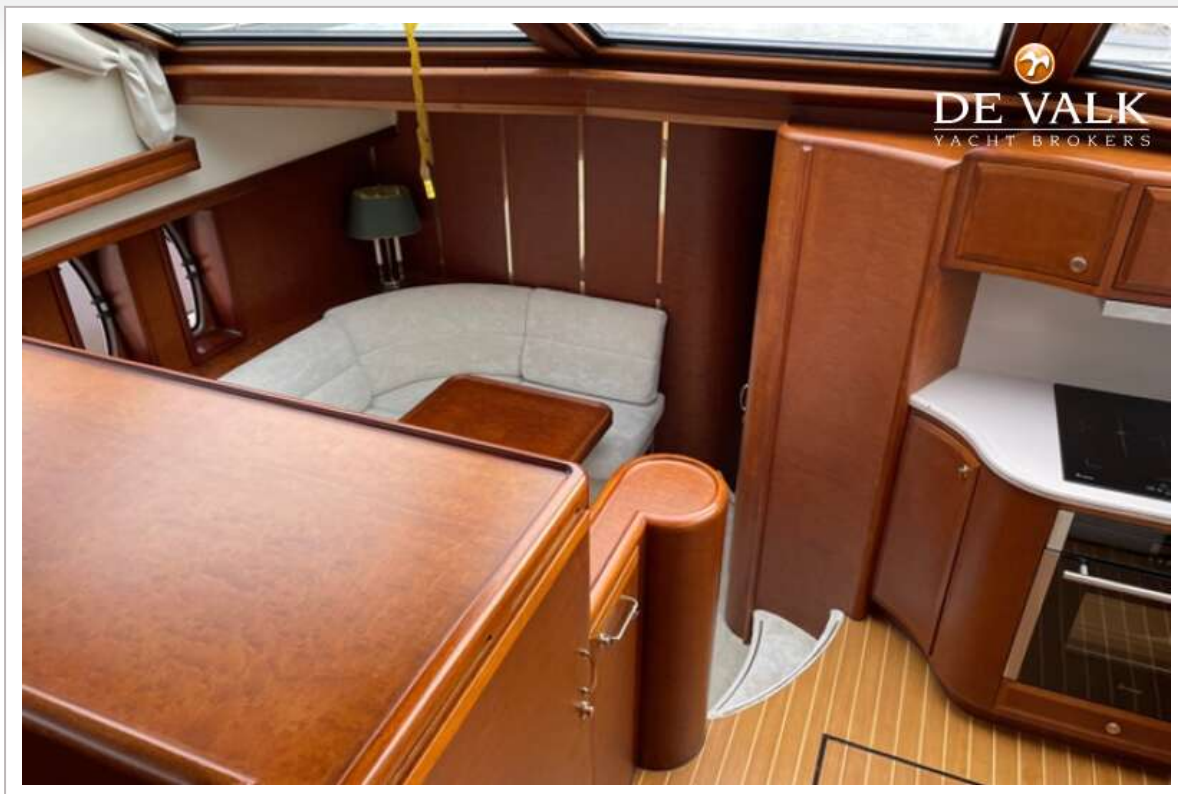
KEMPERS EXCELLENT 65



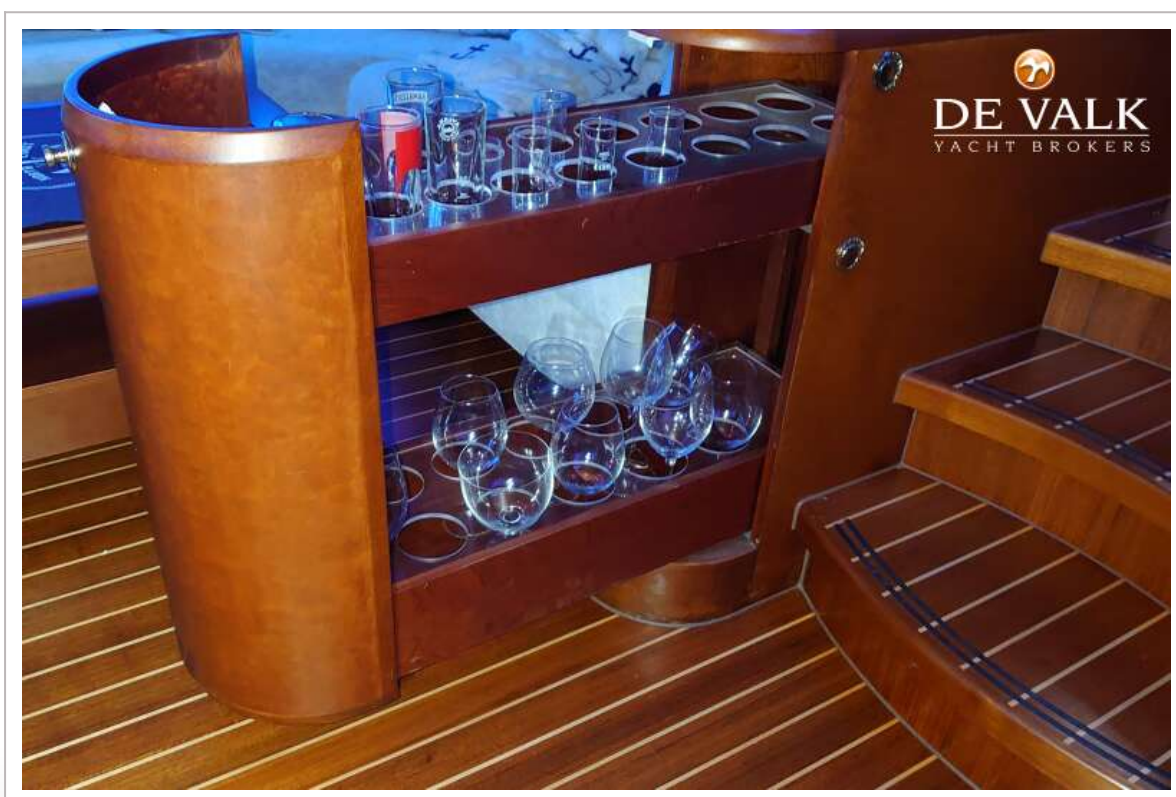
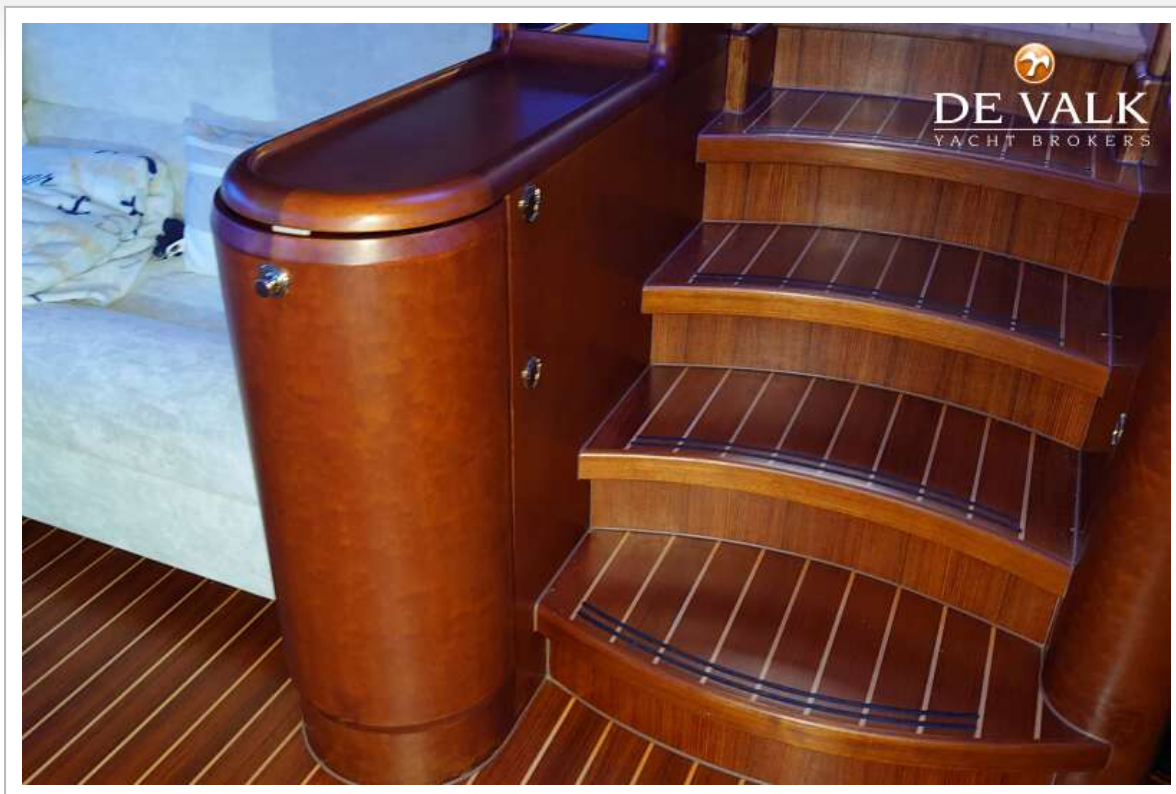
KEMPERS EXCELLENT 65



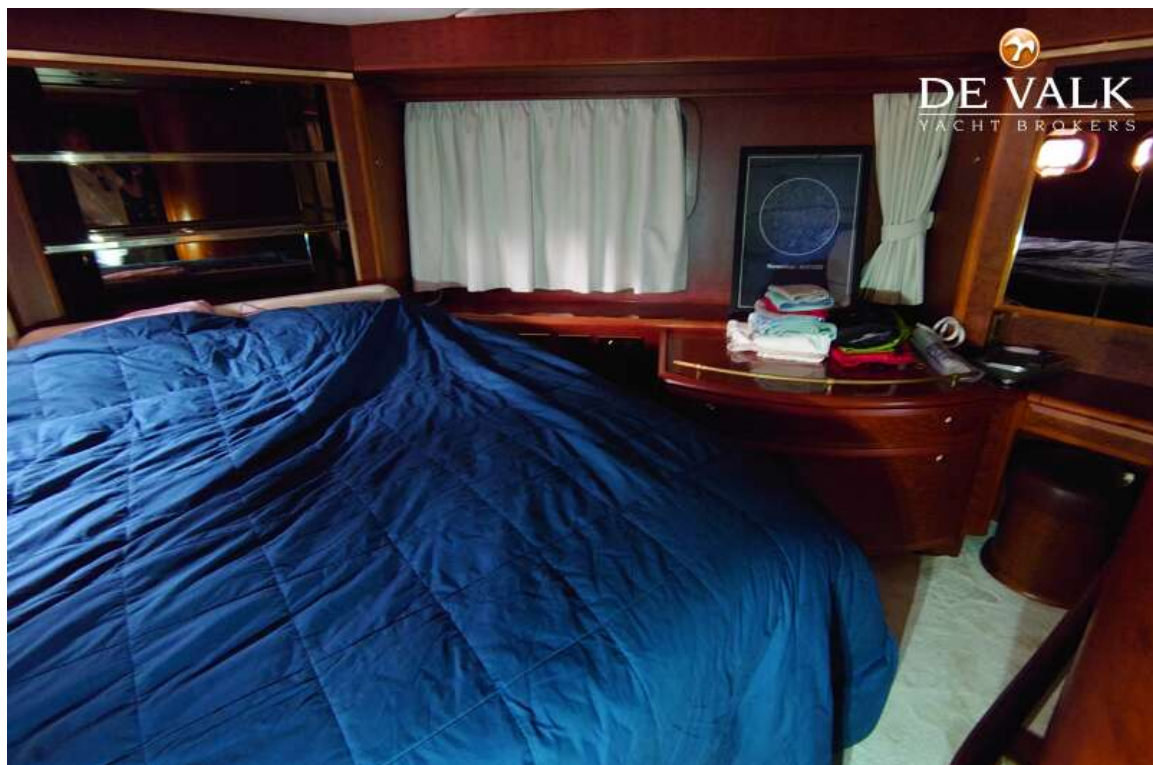
KEMPERS EXCELLENT 65



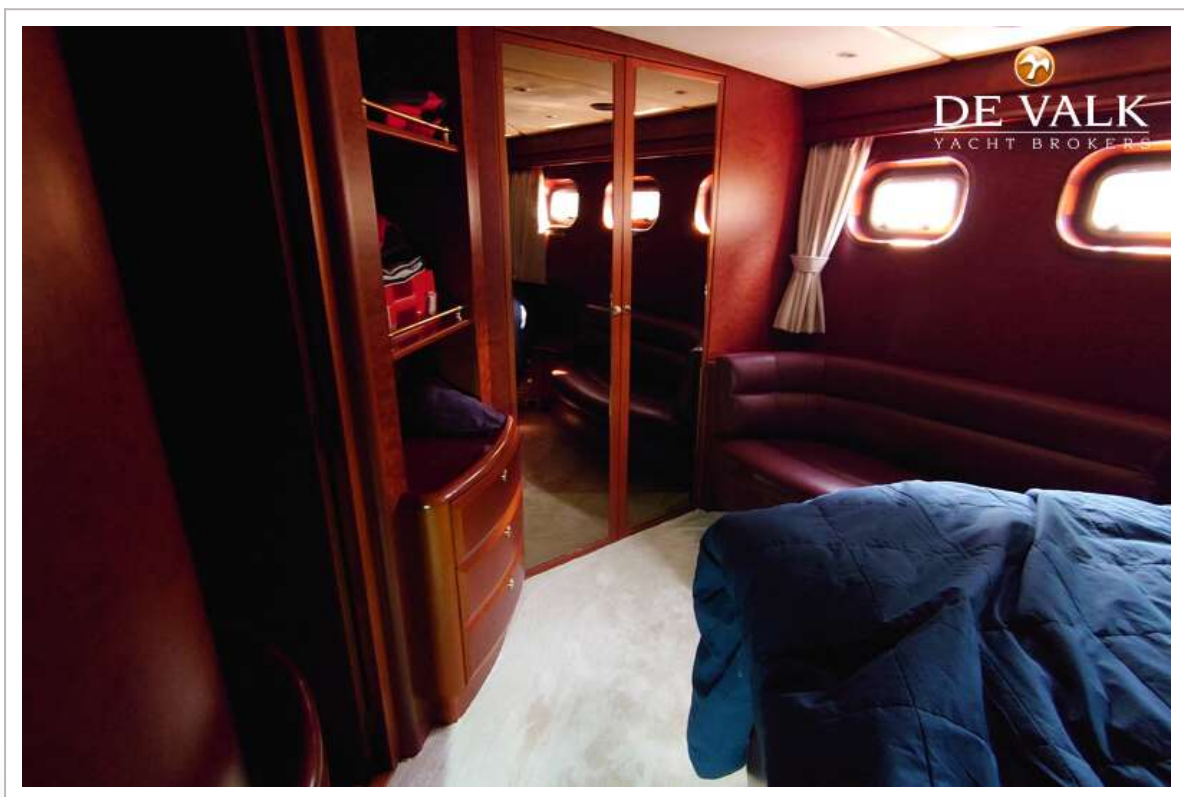
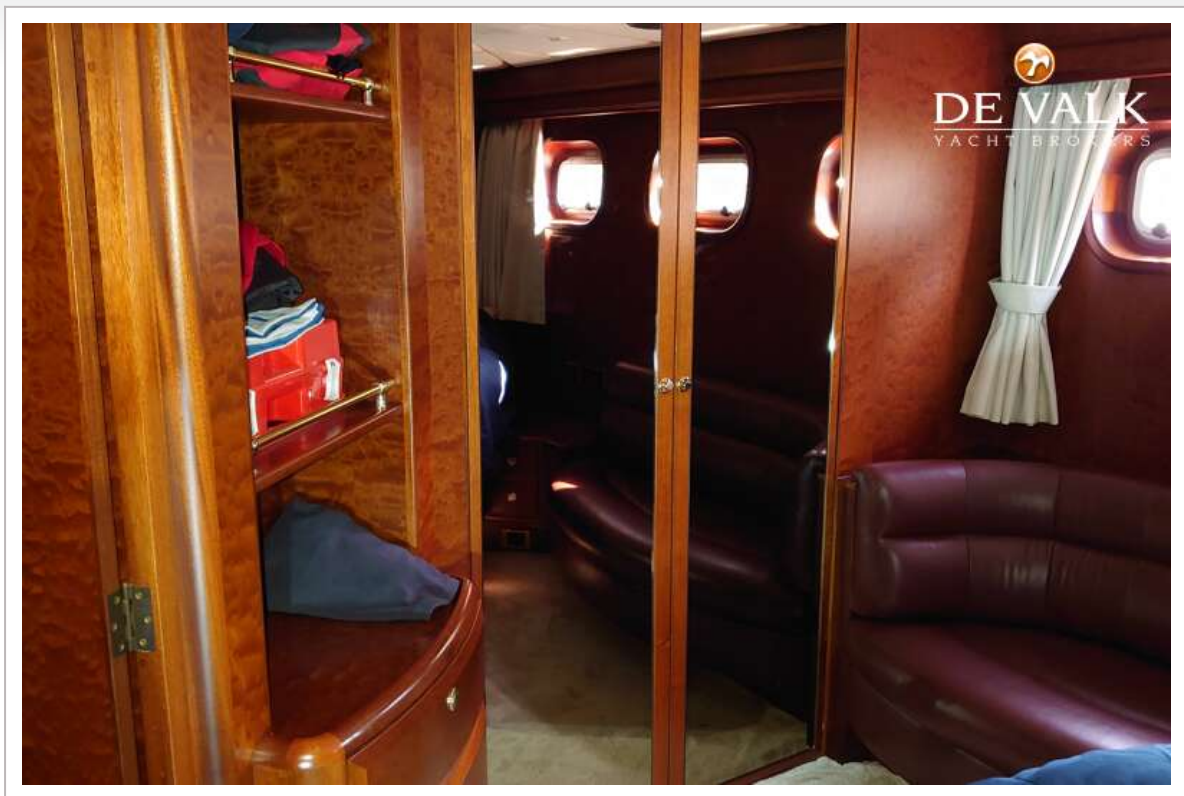
KEMPERS EXCELLENT 65



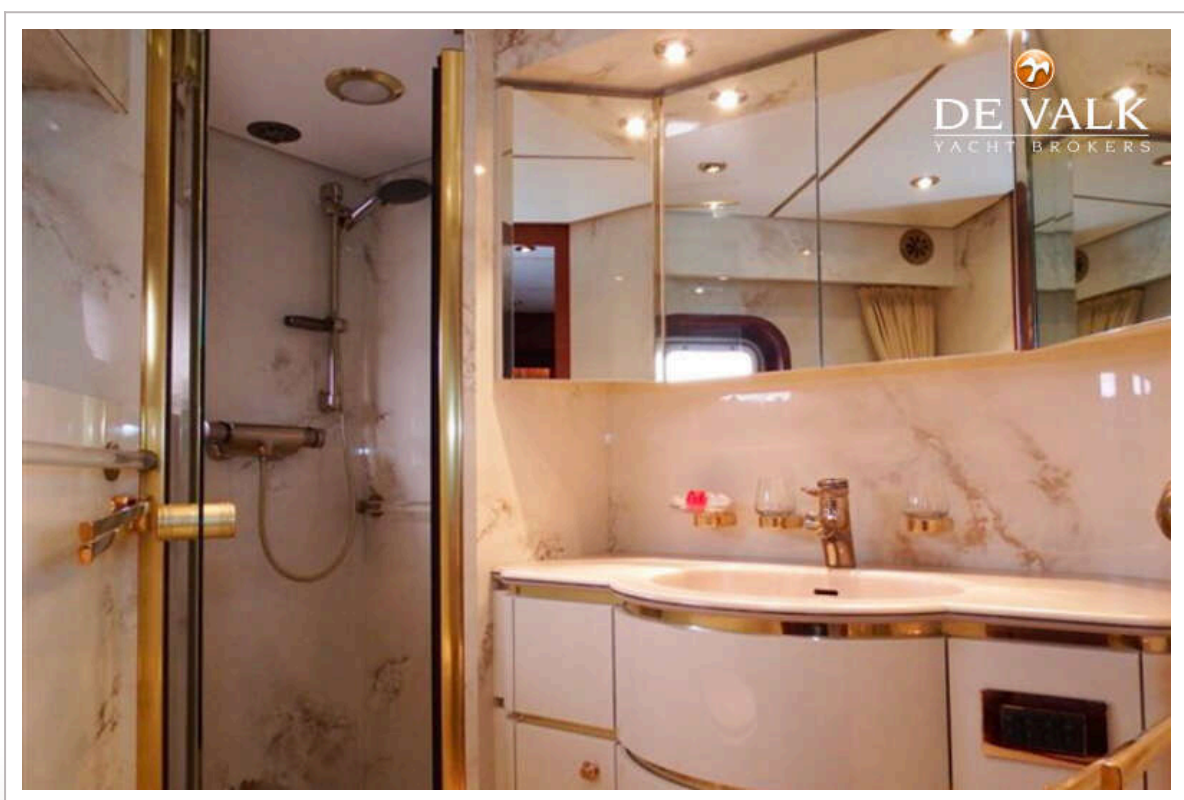
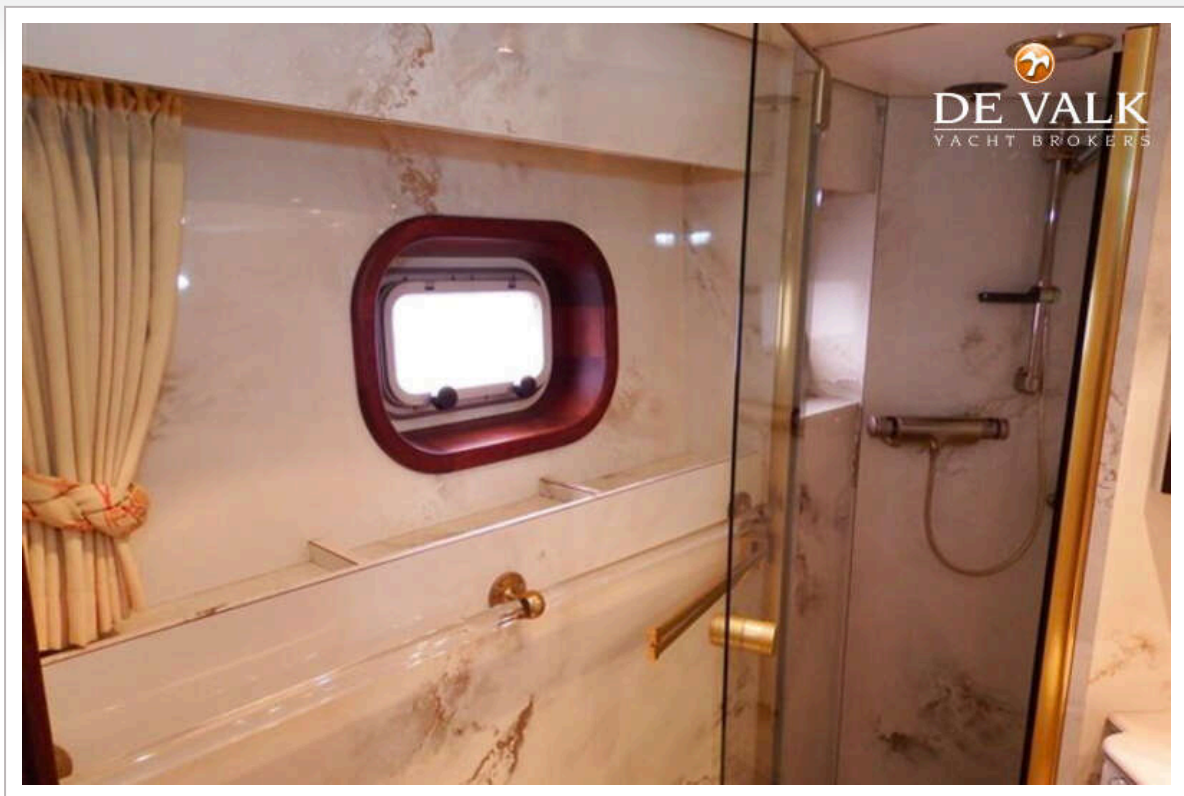
KEMPERS EXCELLENT 65



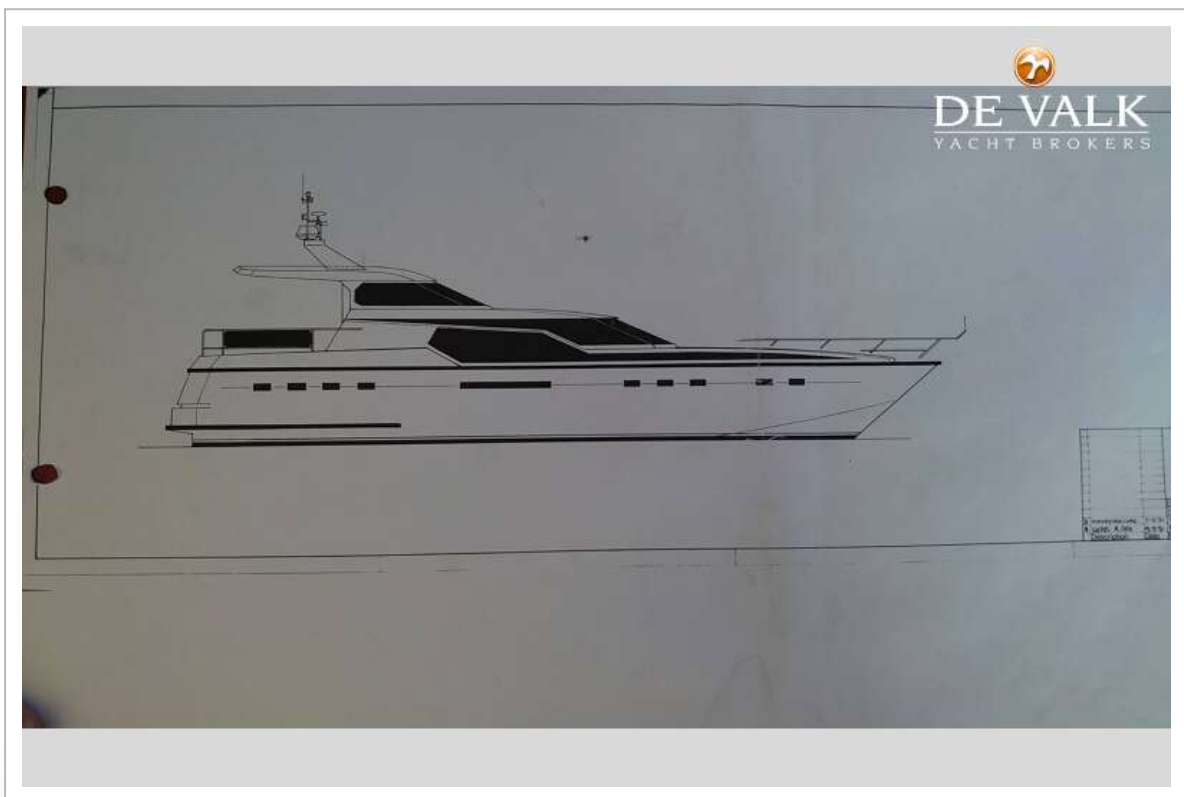
KEMPERS EXCELLENT 65



KEMPERS EXCELLENT 65



KEMPERS EXCELLENT 65



KEMPERS EXCELLENT 65

