



SUCCESS CLASSIC LINE 1050

SUCCESS CLASSIC LINE 1050

BROKER'S COMMENTS

Succes Classic Line 1050 AK named "Imagine". Cosy teak interior with U-shaped dinette, which is convertible into berth and a spacious owners cabin with a French bed. In very good condition and suitable for exploring the inland European waterways. With her proportional electric bow- and stern thruster and a Dockmate system she is easy to handle. Very well maintained and lots of investments been made by her current owner, makes this beautiful Succes Classic Line 1050 AK ready to go! She is located on shore next to our sales office in Sint Annaland.

Nick Lanting

SPECIFICATIONS

Dimensions	10.50 x 3.65 x 0.90 (m)	Builder	Jachtbouw Succes Marknesse
Built	2004	Cabins	2
Material	Steel	Berths	6
Engine(s)	1 x Vetus Deutz DT 64 diesel	Hp/Kw	159.00 (hp), 116.87 (kw)
Asking price	sold (VAT)	Lying	at sales office

CONTACT

Sales office	De Valk Sint Annaland B.V.	Telephone	+31 (0)166 601 000
Address	Koelhuisweg 4 4697 RM Sint Annaland NL	E-mail	sintannaland@devalk.nl

DISCLAIMER

These particulars are given in good faith as supplied but cannot be guaranteed.



SUCCES CLASSIC LINE 1050

GENERAL

Model	SUCCES CLASSIC LINE 1050
Type	motor yacht
LOA (m)	10,50
LWL (m)	9,95
Beam (m)	3,65
Draft (m)	0,90
Air draft (m)	3,60
Air draft min (m)	2,65
Headroom (m)	1,95
Year built	2004
Launched	2005
Builder	Jachtbouw Succes Marknesse
Country	The Netherlands
Displacement (t)	9,5
CE norm	C
Hull material	steel
Hull colour	blue
Hull shape	hard chine
Superstructure material	steel
Rubbing strake	rubber
Deck material	steel
Deck finish	synthetic teak Tek Dek (2016)
Superstructure deck finish	non-skid paint
Cockpit deck finish	synthetic teak Tek Dek (2016)
Antifouling (year)	2022
Window frame	aluminium
Window material	tempered glass Centre front window can be opened and 2 x side window also
Deckhatch	Gebo with mosquito screen & shade & cover
Portholes	aluminium Gebo with mosquito screens
Insulation	foam



Mast can be lowered	manual
Fuel tank (litre)	stainless steel 500 in two tanks in engine room
Level indicator (fuel tank)	yes
Freshwater tank (litre)	stainless steel 500 under aft cabin bed
Level indicator (freshwater)	yes
Blackwater tank (litre)	polyethylene 150 in engine room
Level indicator (blackwater)	yes
Blackwater tank extraction	deck extraction + pump
Greywater tank (litre)	polyethylene 20 with a floater and electric pump
Outside helm position	hydraulic Vetus
More info on hull	4 layers epoxy, 2 layers antifouling in 2015 and 2019
More info on paintwork	Blue hull and stern re-painted in 2015

ACCOMMODATION

Cabins	2
Berths	6
Interior	teak
Floor	vinyl + carpet in aft cabin
Aft deck	yes
Deck saloon	yes
Saloon	yes
Headroom saloon (m)	1,95
Heating	diesel ducted hot air Webasto
Aft Cabin	yes
Dinette	yes
Dinette to convert into berth	Dinette in galley can go down to create a 2 persons bed
Opening door to cockpit	yes
Galley	On port side
Countertop	plastic
Sink	stainless steel
Cooker	calor gas Smev 4 burner



SUCCESS CLASSIC LINE 1050

Oven	Smev (grill only)
Microwave	Micromaxx
Fridge	Waeco front loader (64 liter) with compressor (2014)
Freezer	Small freezer compartment in fridge
Hot water system	220V + engine
Water pressure system	electrical
Owners cabin	French bed In aft cabin
Bed length (m)	2,00 x 1,60
Wardrobe	hanging/drawers/shelves
Toilet	shared
Toilet system	electric Masterflush MF 7220 (2014), flushes with fresh water
Wash basin	at the toilet
Shower	shared Separate shower with wash basin
Guest cabin 1	v-bed In the front cabin
Bed length (m)	1,85
Wardrobe	hanging and shelves
Extra info	New toilet seat is present, to be mounted

MACHINERY

No of engines	1
Make	Vetus Deutz
Type	DT 64
HP	159
kW	116.87
Fuel	diesel
Year installed	2004
Engine hours	1400
Engine cooling system	freshwater heat exchanger
Drive	shaft
Engine controls	electrical & bowden cable Glendinning + Dockmate Remote Control (2019)



Gearbox	hydraulic
Bowthruster	electric Vetus Bow Pro proportional 24 volt (2019)
Sternthruster	electric Vetus Bow Pro proportional 24 volt (2019)
Exhaust	watercooled
Thrust bearing	Aquadrive
Propeller type	fixed
Propeller blades	4
Propeller shaft material	stainless steel
Shaft lubrication	water
Electric bilge pump	2 x
Electrical installation	12/24/230 V
Start battery	2 x Optima (2021)
Service battery	3 x 160 Ah (2021)
Bowthruster battery	2 x Optima (2022)
Sternthruster battery	2 x Optima (2022)
Battery charger/inverter	Victron Phoenix 12/1600/70
Solar panel	2 x Aqua Solar on roof (2014)
Diode battery combiners	yes
Shorepower	with cable
Insulation transformer	Victron
Extra info	New engine mounts + waterlock in 2019 installed
Extra info	Remote control for both bow and stern truster via Dockmate(2019)
Extra info	New in 2014 : Sun Wave Fox-MD1 solar charge control panel

NAVIGATION

Electric compass	Via Raymarine
Depth sounder/log	Raymarine ST 40 Bidata
Windset	Raymarine (2021)
VHF	Icom IC-M423G (with GPS & Distress button)
Autopilot	Raymarine (2014)



Rudder angle indicator	Via autopilot display
Plotter/GPS	Raymarine Hybrid touch (2014)
Electronic chart(s)	yes
AIS receiver	Raymarine (2014)
Navigation lights	yes

EQUIPMENT

Sprayhood	Dark blue - centre window with zipper opened (2015)
Cockpit cover	Dark blue (2015)
Bimini	Dark blue (2015)
Sun awning	Blue Performance
Cockpit chairs	2 x white removable settee
Bathing platform	Tek Dek (synthetic teak) applied in 2016
Boarding ladder	stainless steel
Bow ladder	Aluminium
Gangway	yes
Anchor	Pool
Anchor chain	yes
Windlass	electrical Quick
Davits	(support only)
Sea railing	stainless steel
Grab rail (superstructure)	stainless steel
Railing side opening gates	On both sides
Pushpit	Adapted in 2018 for bowladder
Lifebuoy	Orange
Wiper	3 x Vetus
Horn	electric
Fenders	yes
Mooring lines	yes
Spare parts	yes
Radio-cd player	Pioneer



SUCCES CLASSIC LINE 1050

Speakers in salon

Pioneer

Clock - barometer

yes

Fire extinguisher

yes

Extra info

New in 2015 : dark blue covers on railing around the aft deck

Extra info

New in 2015 : dark blue steering wheel & nav. instruments cover

Extra info

2 x 2 pers. seat on aft deck (1 x at steering wheel)



SUCCES CLASSIC LINE 1050



SUCCES CLASSIC LINE 1050



SUCCES CLASSIC LINE 1050



SUCCES CLASSIC LINE 1050



SUCCES CLASSIC LINE 1050



SUCCES CLASSIC LINE 1050



SUCCES CLASSIC LINE 1050



SUCCES CLASSIC LINE 1050



SUCCES CLASSIC LINE 1050



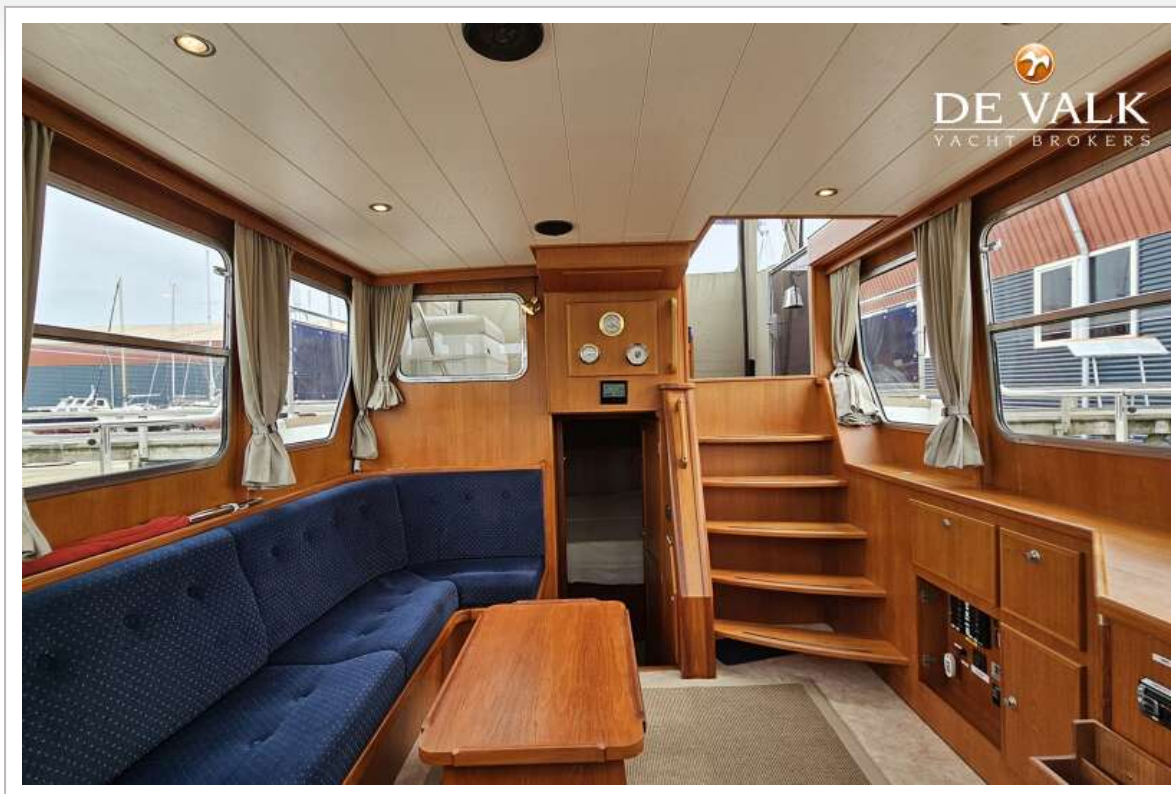
SUCCES CLASSIC LINE 1050



SUCCES CLASSIC LINE 1050



SUCCES CLASSIC LINE 1050



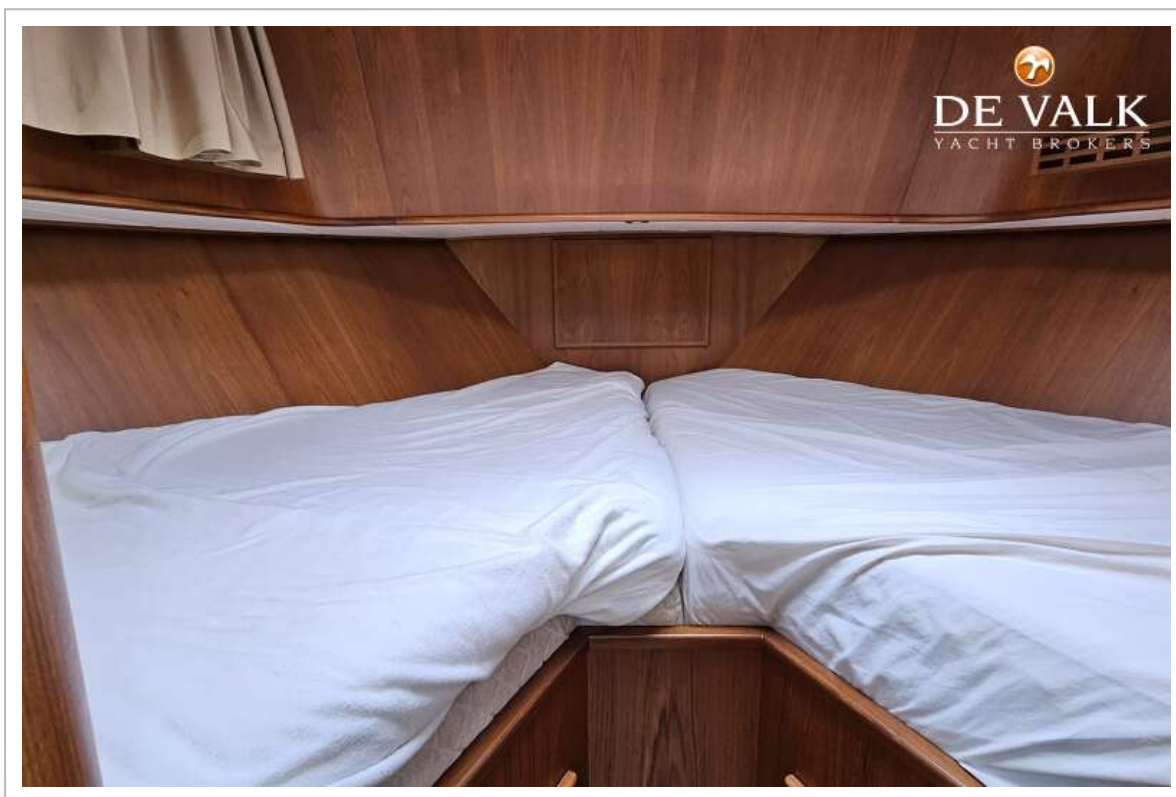
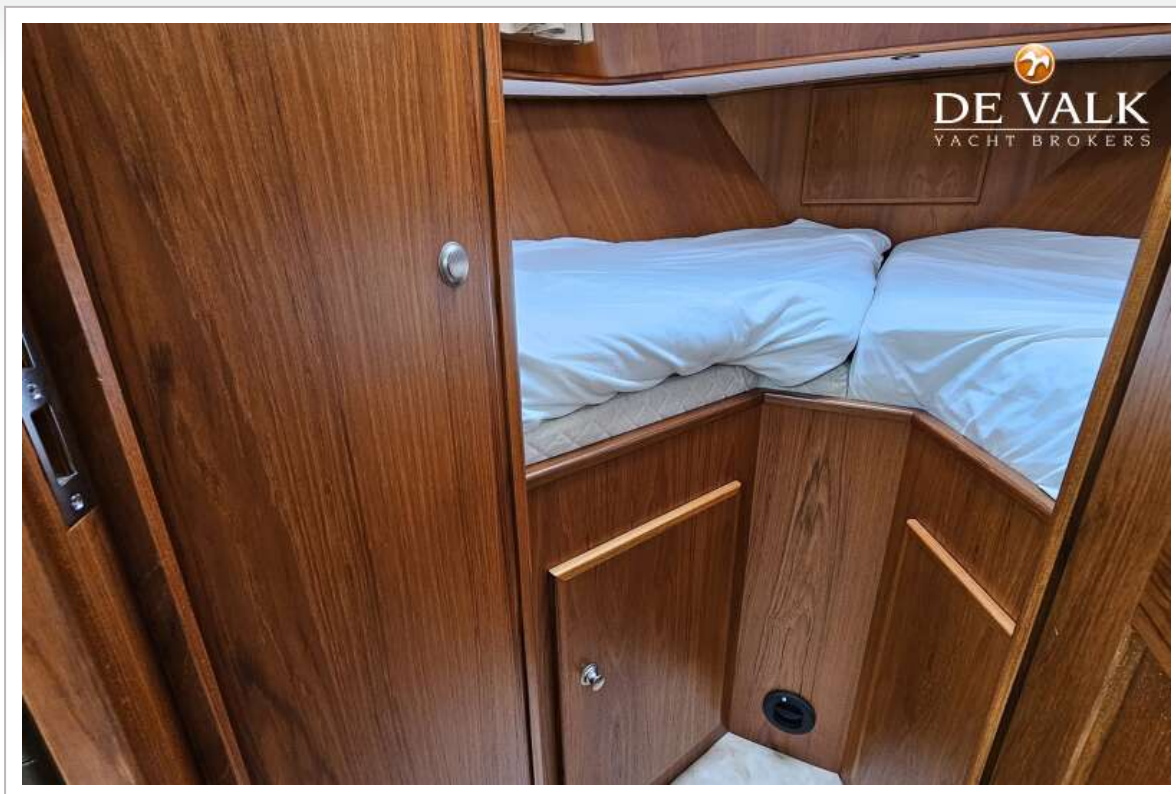
SUCCES CLASSIC LINE 1050



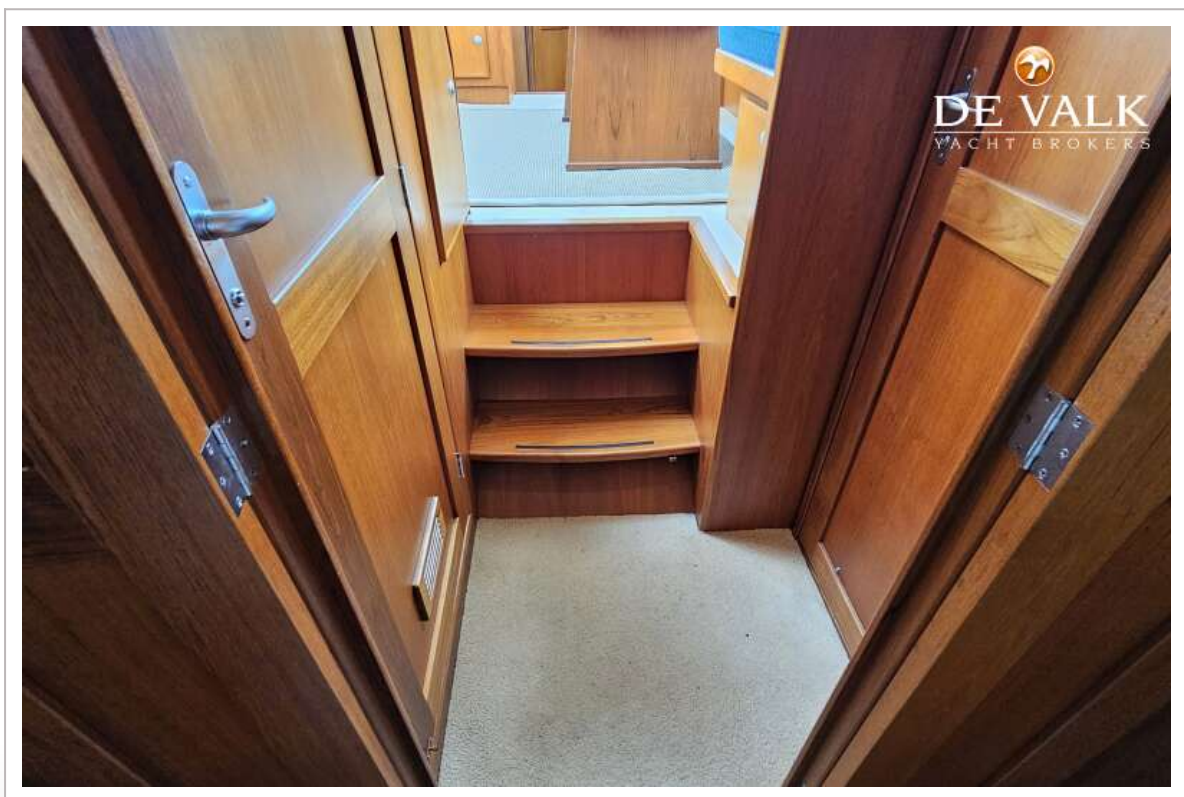
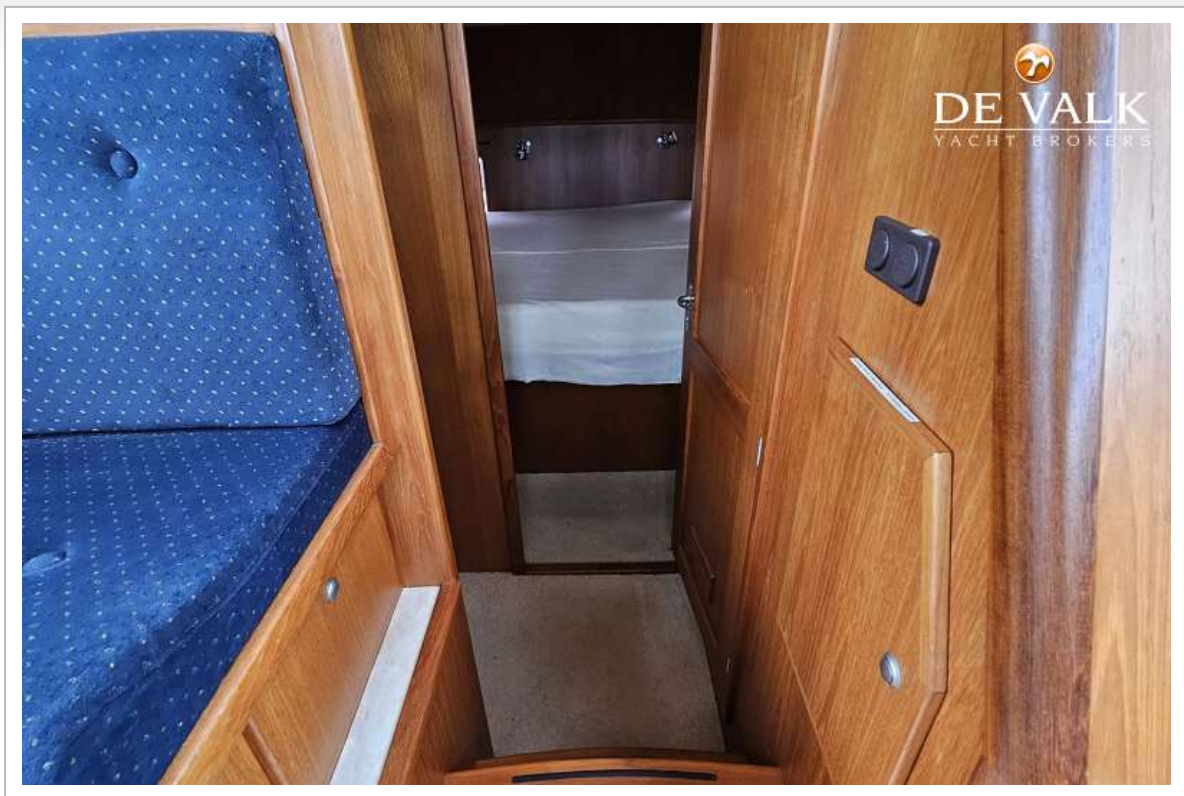
SUCCES CLASSIC LINE 1050

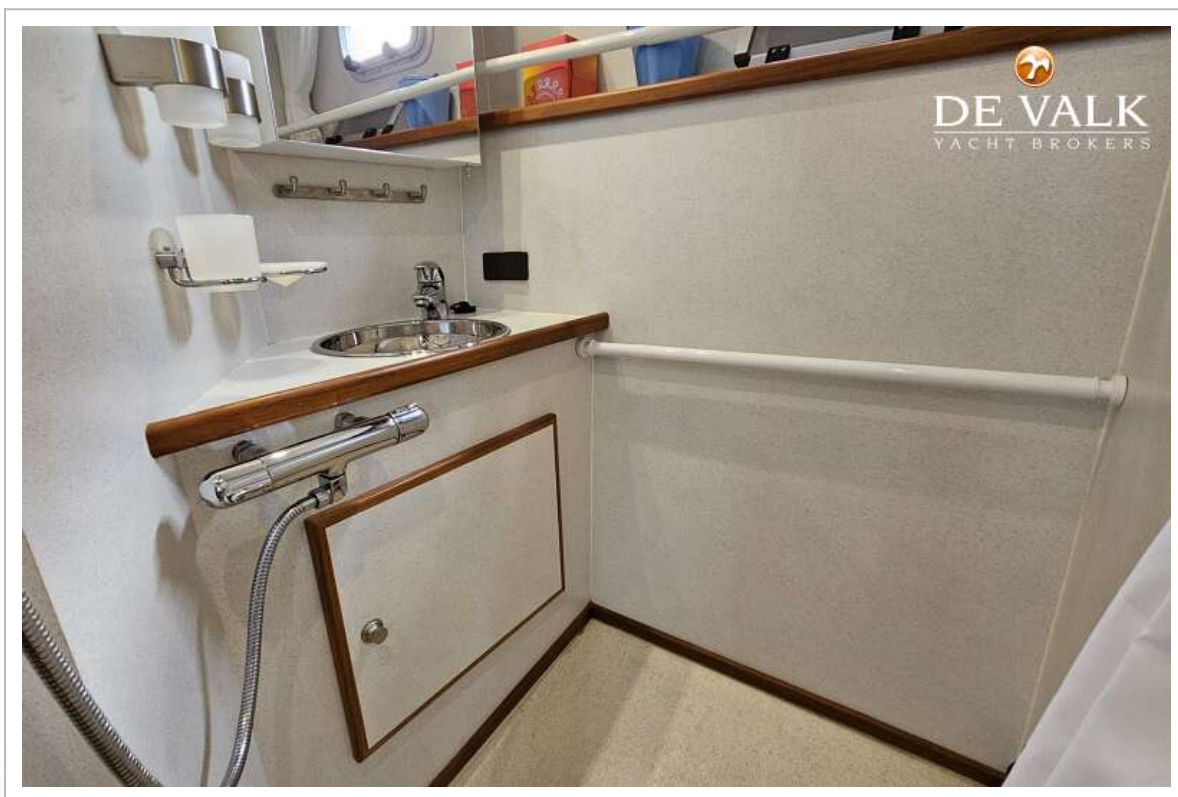
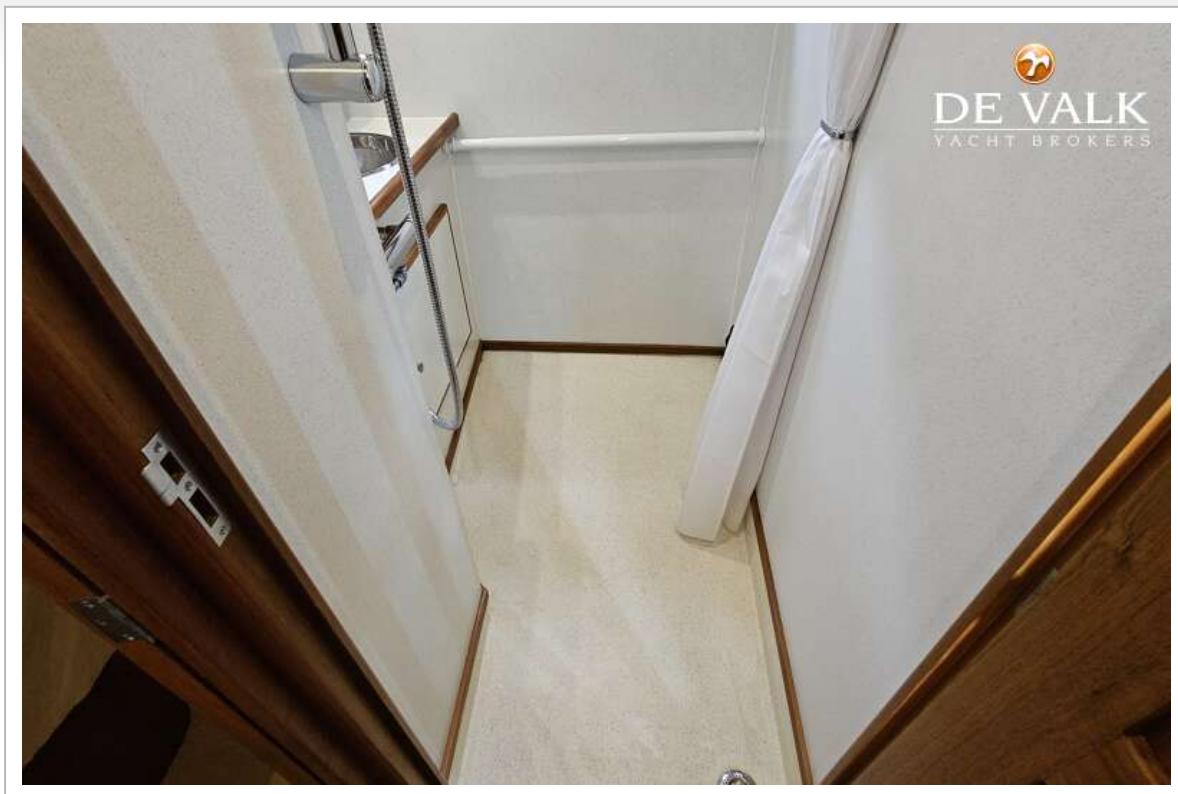


SUCCES CLASSIC LINE 1050

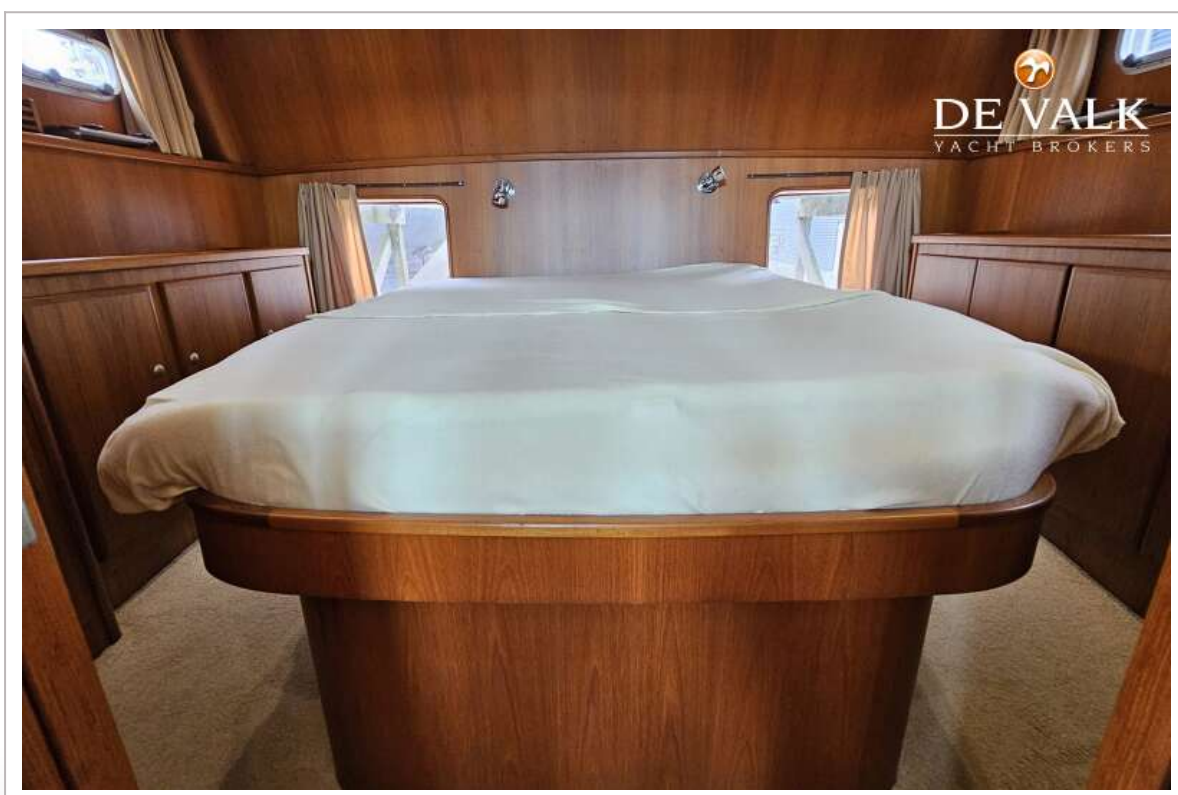
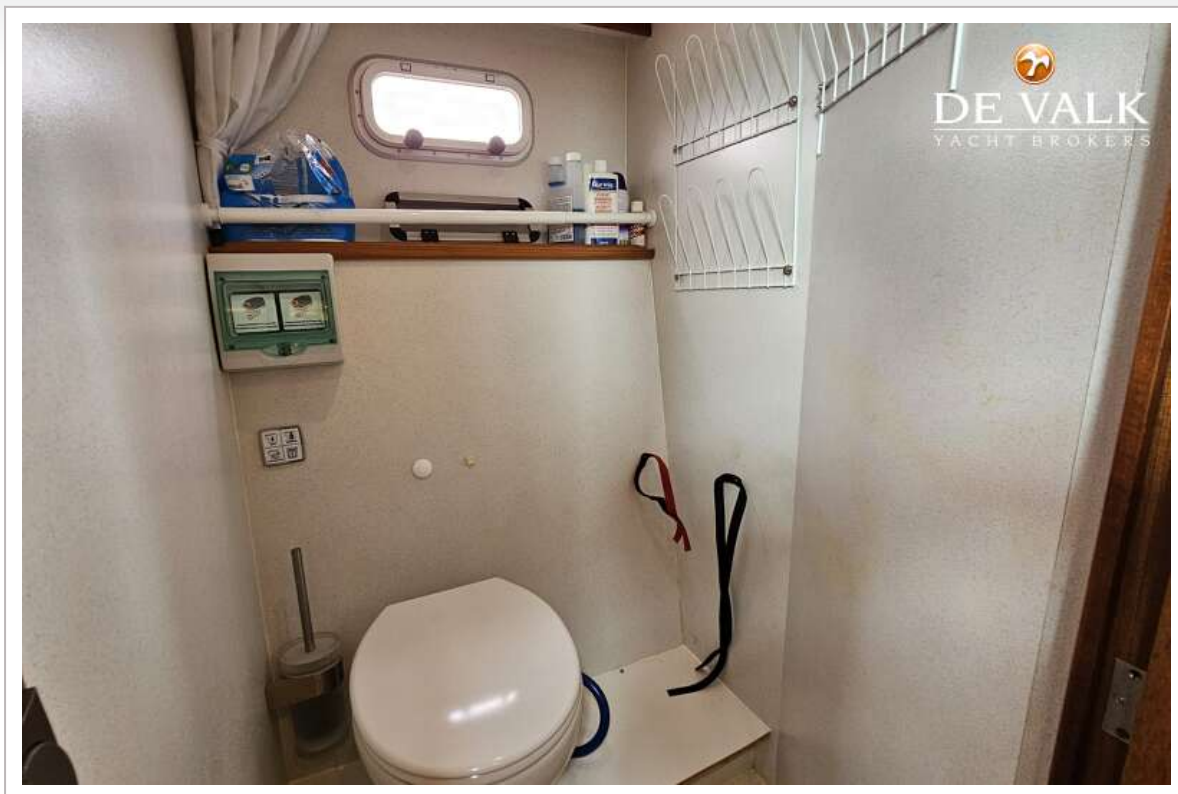


SUCCES CLASSIC LINE 1050





SUCCES CLASSIC LINE 1050



SUCCES CLASSIC LINE 1050

