



BAVARIA 36 HOLIDAY



DE VALK
YACHT BROKERS

BAVARIA 36 HOLIDAY

BROKER'S COMMENTS

This bavaria 36 Holiday is a very nice and well maintained family yacht worth your attention. The Bavaria 36 Holiday is more spacious than the Bavaria 36 2000 series. The Bavaria 36 Holiday has a higher quality of finish, and among other things has a German Lloyds specification. Her interior woodwork is very neat, has lots of storage space and the owners of the yacht have kept her in a very good condition. Lisa has 3 cabins, shallow draft, afurling mainsail and no teak deck. She is now available for a visit at our office in Hindeloopen.

Hans Visser

SPECIFICATIONS

Dimensions	11.48 x 3.68 x 1.45 (m)	Builder	Bavaria Yachts GMBH
Built	1998	Cabins	3
Material	GRP	Berths	7
Engine(s)	1 x Volvo Penta MD2030 diesel	Hp/Kw	29.00 (hp), 21.34 (kw)
Asking price	sold (VAT)	Lying	at sales office

CONTACT

Sales office	De Valk Hindeloopen B.V.	Telephone	+31 514 52 40 00
Address	Oosterstrand 1 8713 JS Hindeloopen NL	E-mail	hindeloopen@devalk.nl

DISCLAIMER

These particulars are given in good faith as supplied but cannot be guaranteed.



GENERAL

Model	BAVARIA 36 HOLIDAY
Type	sailing yacht
LOA (m)	11,48
LWL (m)	9,05
Beam (m)	3,68
Draft (m)	1,45
Headroom (m)	1,90
Year built	1998
Launched	March 1998
Builder	Bavaria Yachts GMBH
Country	Germany
Designer	J&J Design
Displacement (t)	5,5
Ballast (tonnes)	cast iron 1,780 kg
CE norm	A
Hull material	GRP
Hull colour	white
Hull shape	round-bilged
Keel type	fin keel with bulb
Superstructure material	GRP
Rubbing strake	aluminum
Deck material	GRP
Deck finish	non-skid moulded in
Superstructure deck finish	non-skid moulded in
Cockpit deck finish	non-skid moulded in Teak on seats
Antifouling (year)	Copper cruise 2024
Window frame	aluminium
Window material	perspex
Deckhatch	2 x
Portholes	yes



BAVARIA 36 HOLIDAY

Fuel tank (litre)	stainless steel 150
Level indicator (fuel tank)	yes
Freshwater tank (litre)	180
Level indicator (freshwater)	yes
Blackwater tank (litre)	stainless steel 60
Blackwater tank extraction	pump
Wheel steering	cable steering With cover
Outside helm position	yes
Emergency tiller	yes
More info on paintwork	Striping 2024Cobalt blue epifanes
Extra info	Keel sanded down and rebuilt 5 layers of primer 2024

ACCOMMODATION

Cabins	3
Berths	7
Interior	mahogany
Layout	Standard
Floor	parquet
Open cockpit	yes
Saloon	yes
Headroom saloon (m)	1,95
Heating	diesel ducted hot air Webasto
Navigation center	yes
Chart table	yes
Aft Cabin	2 x
Sliding door to cockpit	yes
Galley	Alongside
Countertop	plastic
Sink	stainless steel
Cooker	calor gas 2 burner
Oven	yes



Fridge	yes
Water pressure system	electrical
Owners cabin	v-bed Front
Bed length (m)	2,00
Wardrobe	hanging and shelves
Bathroom	shared
Toilet	New pump 2024
Toilet system	manual
Wash basin	yes
Extra info	All toilet piping replaced 2024
Guest cabin 1	double bed Rear
Bed length (m)	2,00
Wardrobe	hanging and shelves
Guest cabin 2	double bed Rear
Bed length (m)	2,00
Wardrobe	hanging and shelves

MACHINERY

No of engines	1
Make	Volvo Penta
Type	MD2030
HP	29
kW	21.34
Fuel	diesel
Year installed	1996
Maximum speed (kn)	7
Cruising speed (kn)	6
Consumption (l/hr)	2,5
Engine cooling system	freshwater heat exchanger
Drive	sail-drive
Saildrive seal	2008



Engine controls	manual
Propeller type	fixed
Propeller blades	2
Propeller shaft material	stainless steel
Manual bilge pump	yes
Electric bilge pump	yes
Batteries	yes
Start battery	12 V 55 AH 2024
Service battery	12 V 110 AH
Battery charger	yes
Shorepower	with cable

NAVIGATION

Compass	yes
Depth sounder	Autohelm/Raymarine
Log	Autohelm/Raymarine
Windset	Autohelm/Raymarine
VHF	Garmin dual station
Autopilot	Autohelm/Raymarine needs new bearings
GPS	yes
Plotter	yes
Plotter/GPS	Raymarine new 2024
Electronic chart(s)	yes
Navigation lights	yes

EQUIPMENT

Sprayhood with grab rail	yes
Winter cover	New never used
Boarding ladder	yes
Deck shower	yes
Anchor	CQR Plough



Anchor chain	50 M stainless steel 8 mm
Windlass	electrical
Deck wash	yes
Sea railing	yes
Grab rail (superstructure)	stainless steel
Lifebuoy	2024
Radar reflector	yes
Fenders	yes
Mooring lines	yes
TV	yes
Radio	yes
Speakers in salon	yes
Clock - barometer	yes
Fire extinguisher	2024
Extra info	yes

RIGGING

Rigging	sloop
Standing rigging	wire Replaced by first owner
Brand mast	Seldén
Material mast	aluminium
Spreaders	2 sets
Mainsail	Approx 26 M2, original, UV needs replacing good quality
Stoway mast	yes
Genoa	Elvstrom with new UV 2024, year unknown 32 M2, good condition
Genoa furler	Manual Selden S 200
Reefing System	slabreefing
Backstay adjuster	tackle With stopper
Boomvang	gasspring Selden
Genoa sheetwinches	yes



Halyard winches	yes
Spinnaker winch	yes
Spi-pole	aluminium On the mast
Extra info	Lightning deflector in backstay





















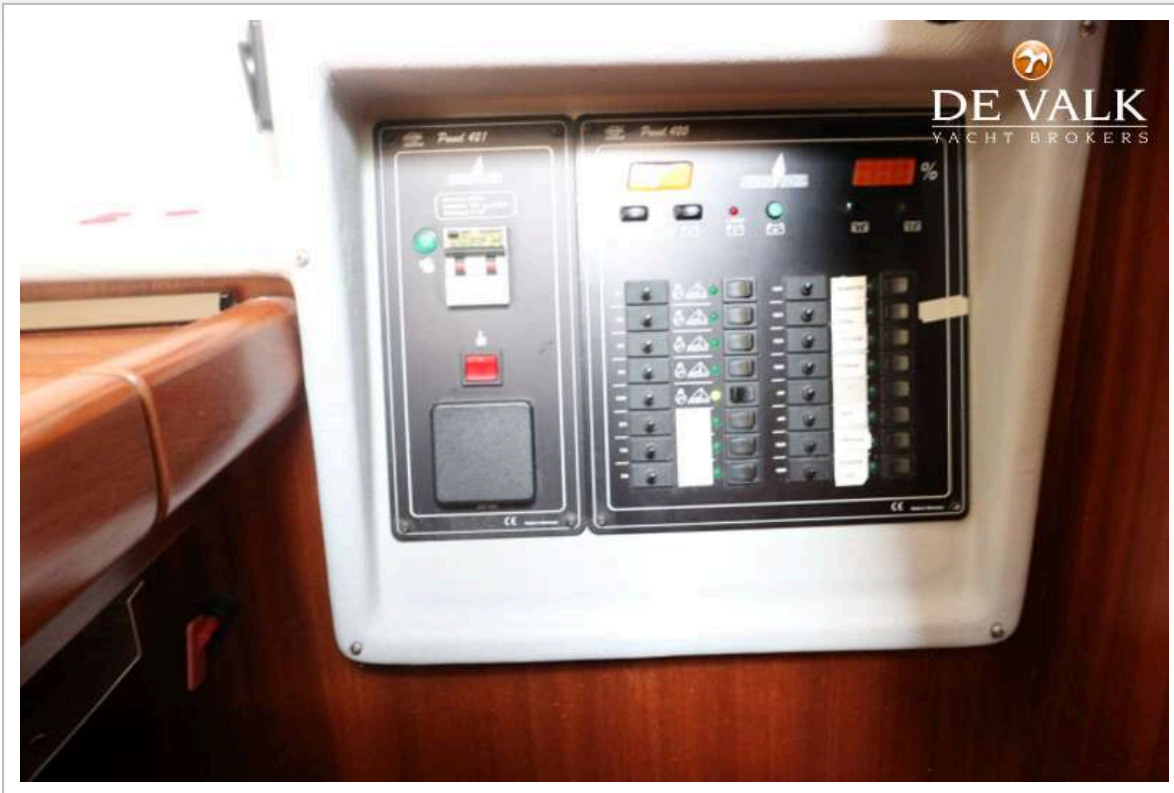


BAVARIA 36 HOLIDAY



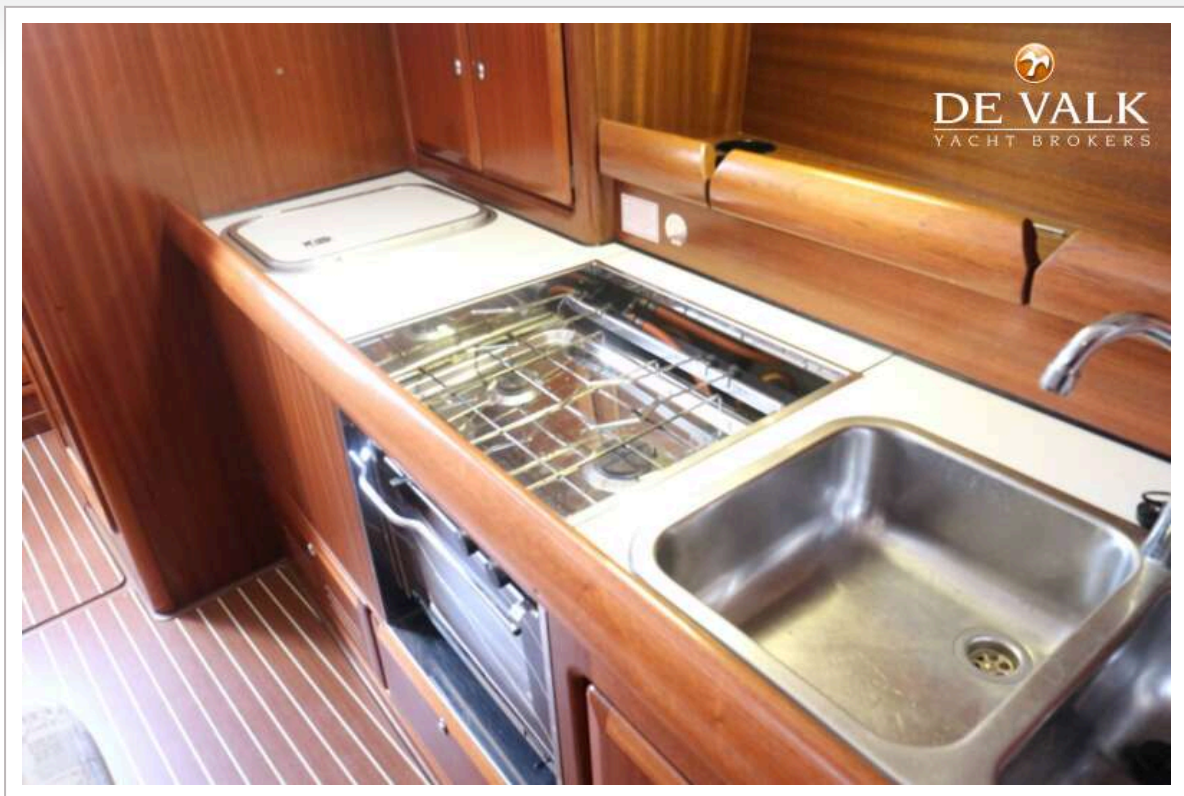
BAVARIA 36 HOLIDAY



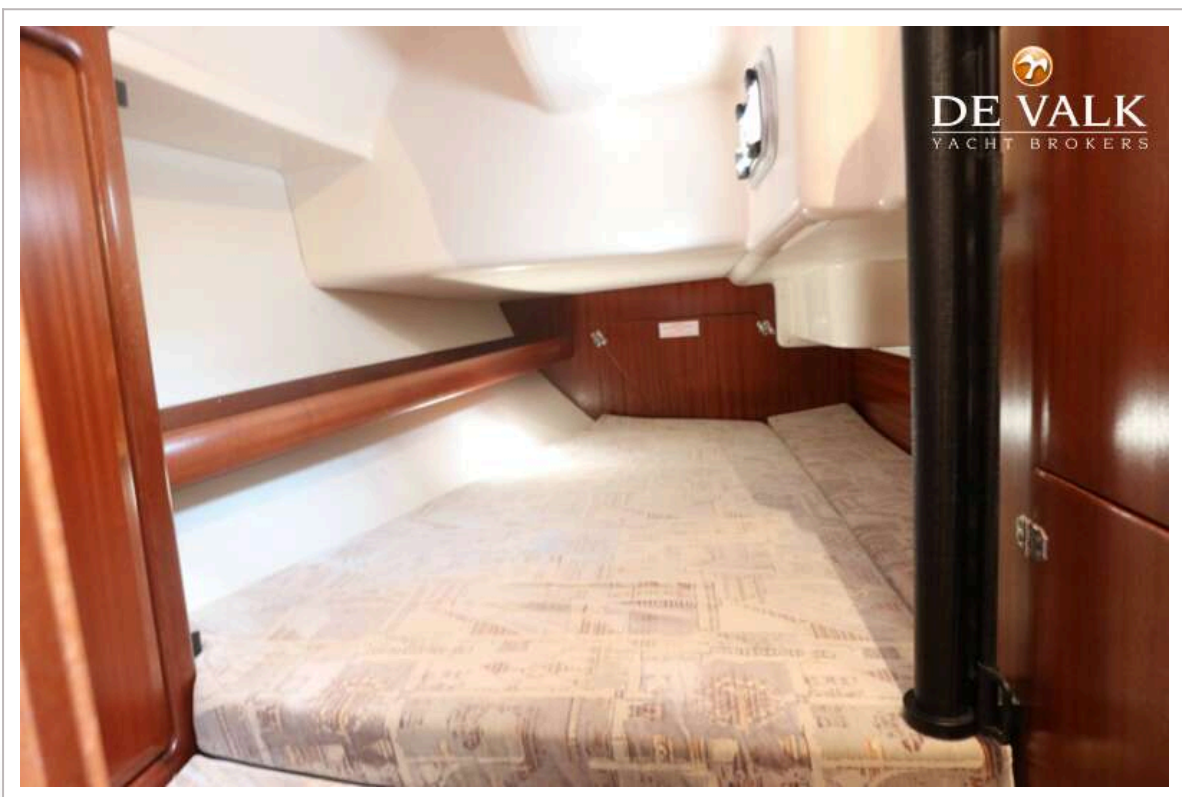
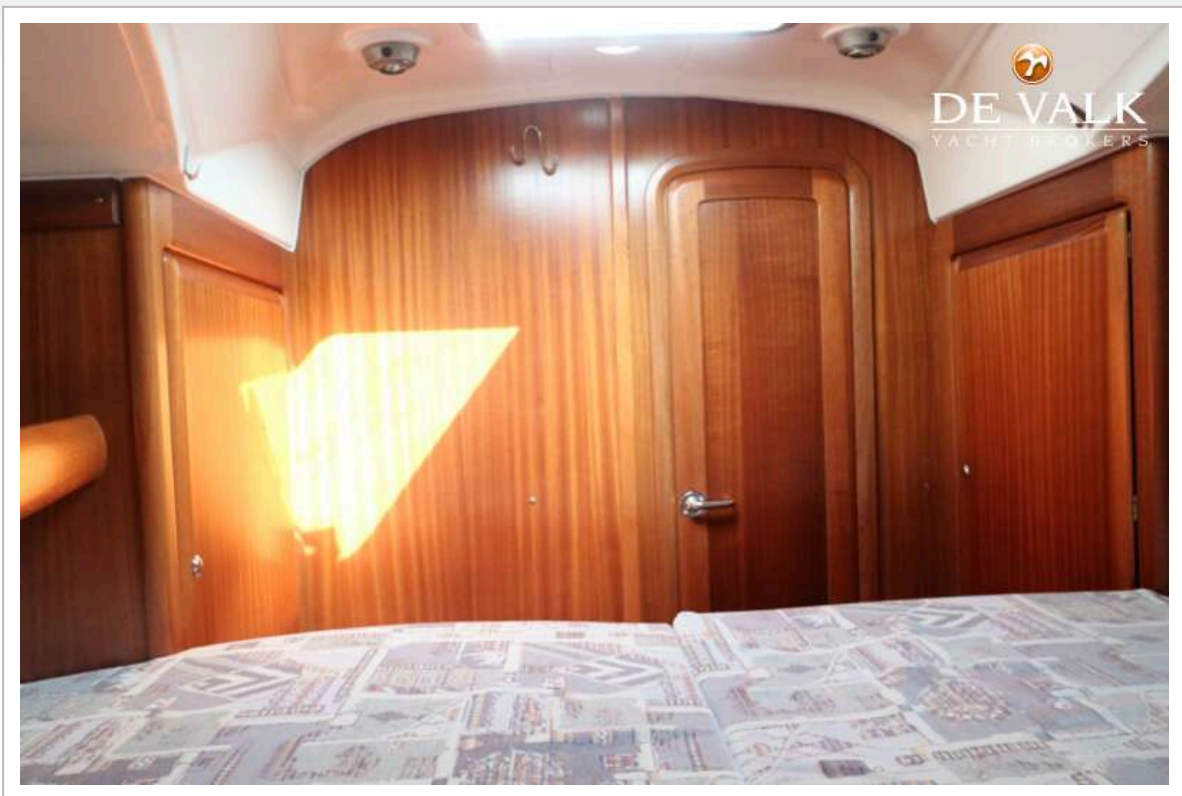


BAVARIA 36 HOLIDAY

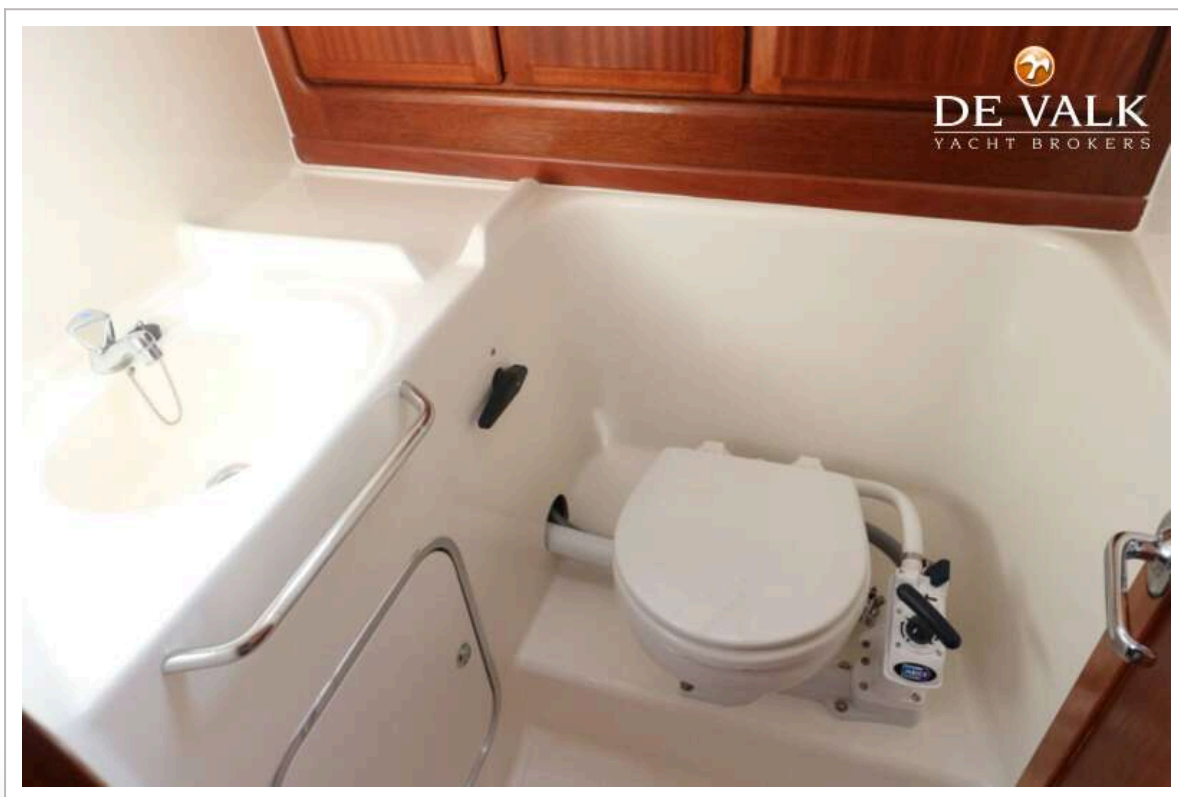
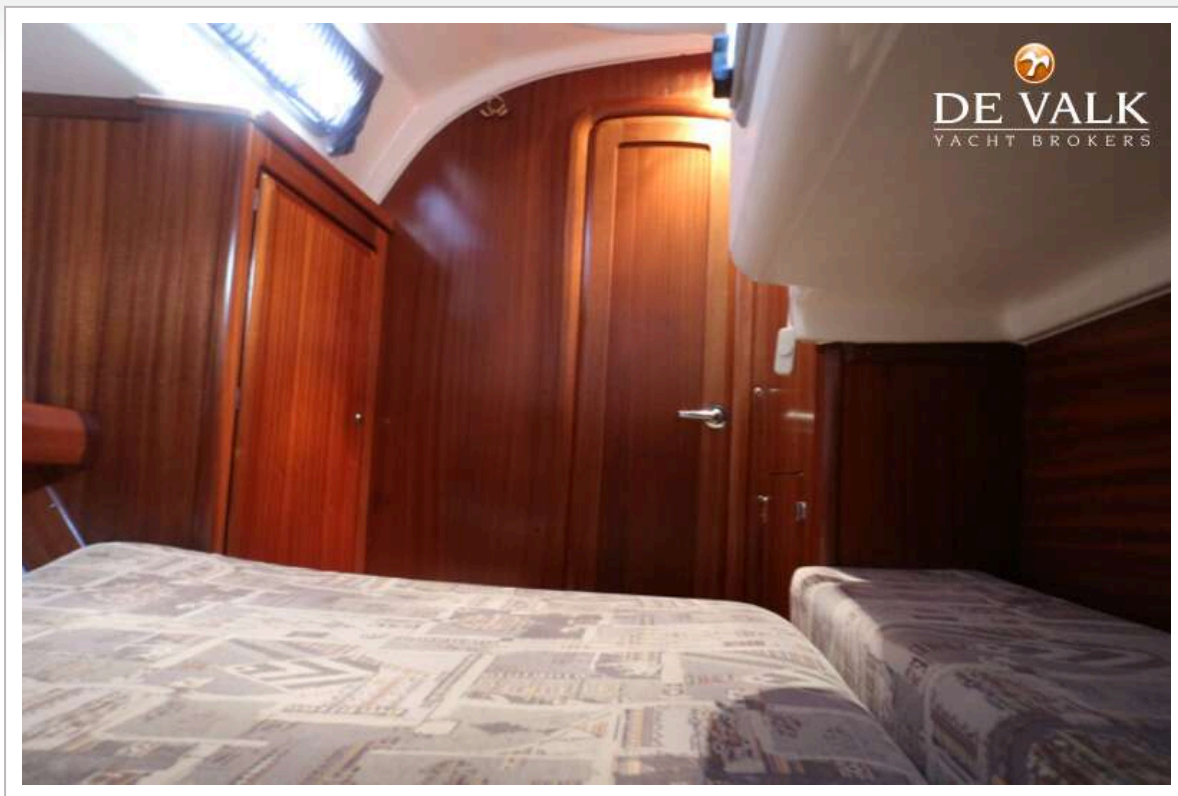




BAVARIA 36 HOLIDAY







BAVARIA 36 HOLIDAY

