



VIKNES 1030



BROKER'S COMMENTS

The Viknes range is widely appreciated for more than one reason. Sturdy, safe construction, Scandinavian quality, reliable seakeeping in comfort all represented in an open cockpit sedan concept. In a slightly different version, the same hull is also used for professional fishing around the Norwegian fjords. Safety and reliability are the top priority. The classic mahogany wood finish will certainly appeal. This Viknes 1030 has an extended bathing platform, bow and stern thruster, a powerful Yanmar diesel, fine owner's and guest cabin and saloon with free 360 degree view all around.

Marc Weijenberg

SPECIFICATIONS

Dimensions	10.96 x 3.42 x 1.00 (m)	Builder	Viknes Bat of Service AS
Built	2012	Cabins	2
Material	GRP	Berths	4
Engine(s)	1 x Yanmar 6LPA-STP.2 diesel	Hp/Kw	315.00 (hp), 231.53 (kw)
Asking price	sold (VAT)	Lying	The Netherlands

CONTACT

Sales office	De Valk Thuishaven	Telephone	+31 35 5829042
Address	Peperstraat 7 1411 PX Naarden NL	E-mail	thuishaven@devalk.nl

DISCLAIMER

These particulars are given in good faith as supplied but cannot be guaranteed.



GENERAL

Model	VIKNES 1030
Type	motor yacht
LOA (m)	10,96
Beam (m)	3,42
Draft (m)	1,00
Air draft (m)	2,90
Air draft min (m)	3,85
Headroom (m)	1,97
Year built	2012
Builder	Viknes Bat of Service AS
Country	Norway
Designer	Sivertsen/Magnussen
Displacement (t)	6
CE norm	B
Hull material	GRP
Hull colour	white
Hull shape	deep-V
Keel type	yes
Superstructure material	GRP
Rubbing strake	rubber
Deck material	GRP
Deck finish	non-skid moulded in
Cockpit deck finish	non-skid moulded in
Window frame	aluminium
Window material	glass
Deckhatch	2 x
Portholes	aluminium
Mast can be lowered	manual
Fuel tank (litre)	aluminium 2 x 350
Freshwater tank (litre)	aluminium 160



Level indicator (freshwater)	yes
Blackwater tank (litre)	aluminium 140
Blackwater tank extraction	yes
Wheel steering	hydraulic
Inside helm position	yes
Outside helm position	hydraulic
Emergency tiller	yes
Extra info	Headway 2,90 mtr is without mast and radar dome

ACCOMMODATION

Cabins	2
Berths	4
Interior	mahogany
Floor	teak and holly
Open cockpit	yes
Pilot house/deck saloon	yes
Headroom saloon (m)	1,97
Sliding roof	manual
Heating	diesel ducted hot air Eberspacher
Dinette	one part folds electrical into helmsman seat
Sliding door to cockpit	yes
Galley	yes
Countertop	Corian
Sink	stainless steel 1 x
Cooker	calor gas Eno 2-burner
Oven	Eno
Fridge	Isotherm 12v toploader under helmsman seat
Hot water system	220V + engine
Water pressure system	electrical
Owners cabin	double bed
Bed length (m)	1,95 x 1,50 m, headroom 1,80m



Wardrobe	hanging and drawers
Bathroom	shared
Toilet	shared
Toilet system	electric
Wash basin	in the bathroom
Shower	shared
Guest cabin 1	double bed
Bed length (m)	2.00 x 1.60
Wardrobe	shelves
Extra info	extra 220 Volt sockets (2016)
Extra info	blinds in saloon (2016)

MACHINERY

No of engines	1
Make	Yanmar
Type	6LPA-STP.2
HP	315
kW	231.53
Fuel	diesel
Year installed	2012
Maximum speed (kn)	22
Cruising speed (kn)	7
Consumption (l/hr)	5
Engine hours	775
Engine cooling system	freshwater heat exchanger
Drive	shaft
Engine controls	electrical Glendenning
Gearbox	hydraulic Yanmar
Bowthruster	electric Sidepower
Sternthruster	electric Sidepower (2020)
Exhaust	watercooled



Propeller type	fixed
Propeller blades	4-bladed
Propeller shaft material	stainless steel
Shaft lubrication	water
Manual bilge pump	2x
Electric bilge pump	1x
Electrical installation	12v/220v
Start battery	2x 110 Ah
Service battery	4x 110 Ah
Battery monitor	Victron Multicontrol
Battery charger/inverter	Victron Multiplus 12v/220v/1800watt/70amp
Shorepower	with cable
Trimtabs	Boat-Leveller
Extra info	With her twin helm station, bow and sternthruster and electric controls she is very easy to maneuver
Extra info	rope cutter on prop shaft
Extra info	twin Racor fuel filter system

NAVIGATION

Compass	Silva 100
Electric compass	via autopilot
Depth sounder	Raymarine
Fish finder	Blackbox Fishfinder Raymarine DSM300
VHF	Raymarine 240E
Autopilot	Raymarine SPX 10-ST70 plus remote
Rudder angle indicator	via autopilot
Radar	Raymarine digital (2024)
GPS	Raymarine
Plotter	Raymarine Axiom 12" (2022)
Electronis chart(s)	1x
AIS transponder	Raymarine AIS650 Class B (2016)



Navigation lights	yes
Searchlight	(defect)

EQUIPMENT

Cockpit cover	annex Bimini (2016)
Cockpit cushions	yes
Cockpit table	teak
Bathing platform	yes
Boarding ladder	stainless steel
Transom door	yes
Deck shower	hot + cold water
Anchor	Bruce 15 kg
Anchor chain	20 m. + 80 m. rope
Windlass	electrical Vetus RC8 (2016)
Grab rail (superstructure)	stainless steel
Pulpit	yes
Life raft	container RFD Coastal (2016)
Life raft (pers)	8
Last life raft survey	service is due
Wiper	3 x
Window heating	yes
Horn	electric
Fenders	yes
Mooring lines	yes
Radio-cd player	Pioneer
iPod connection	On radio
Cockpit speakers	yes
Speakers in salon	yes
Fire extinguisher	2x



VIKNES 1030



VIKNES 1030



VIKNES 1030



VIKNES 1030



VIKNES 1030



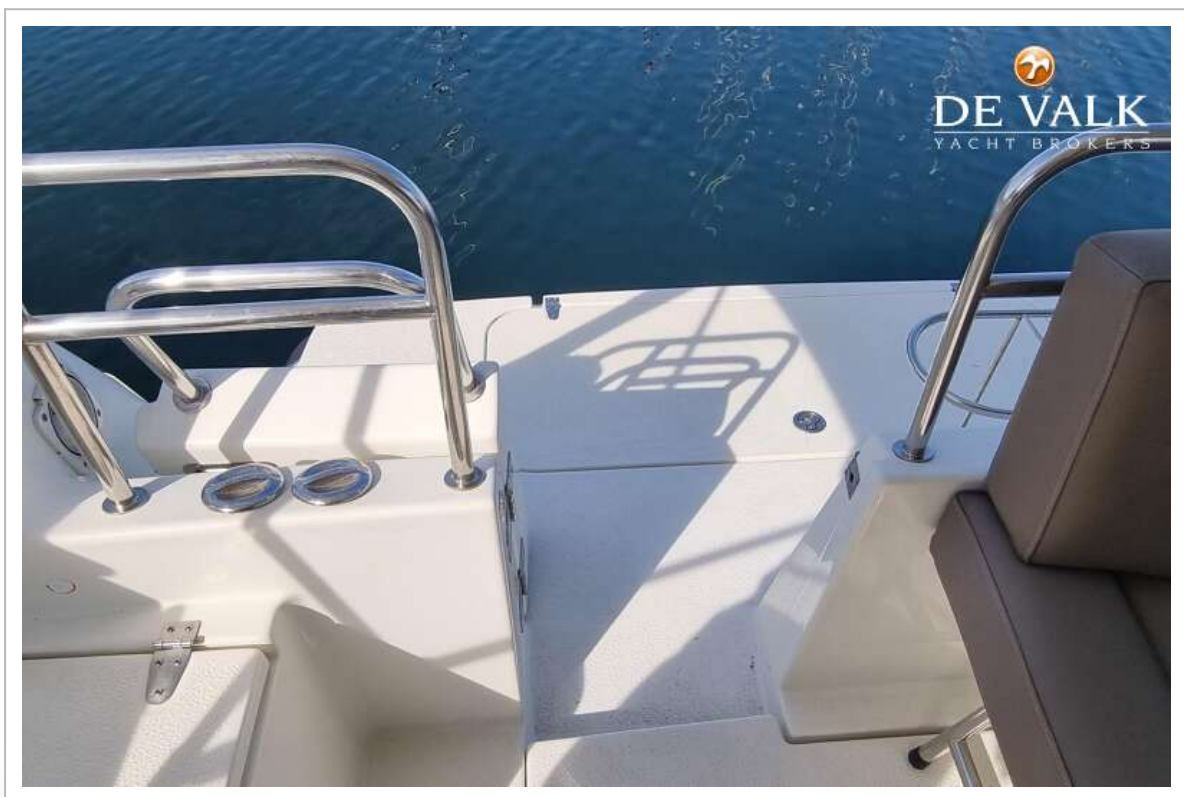
VIKNES 1030



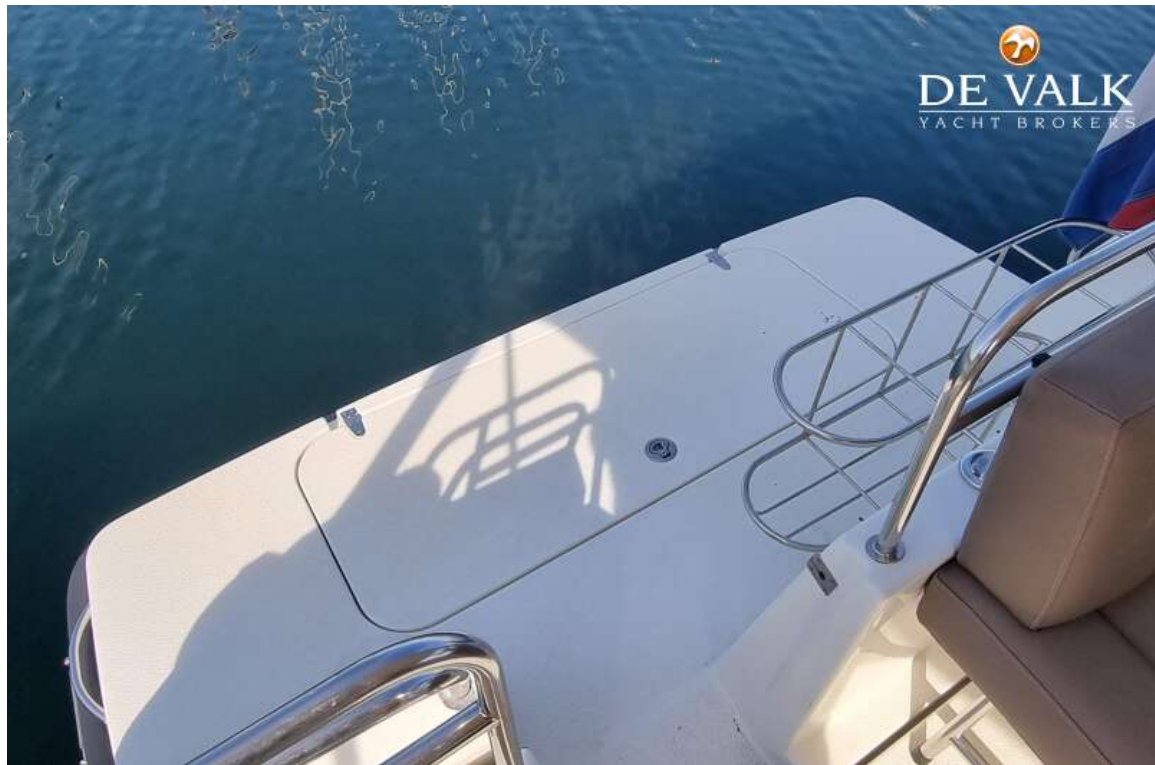
VIKNES 1030



VIKNES 1030



VIKNES 1030



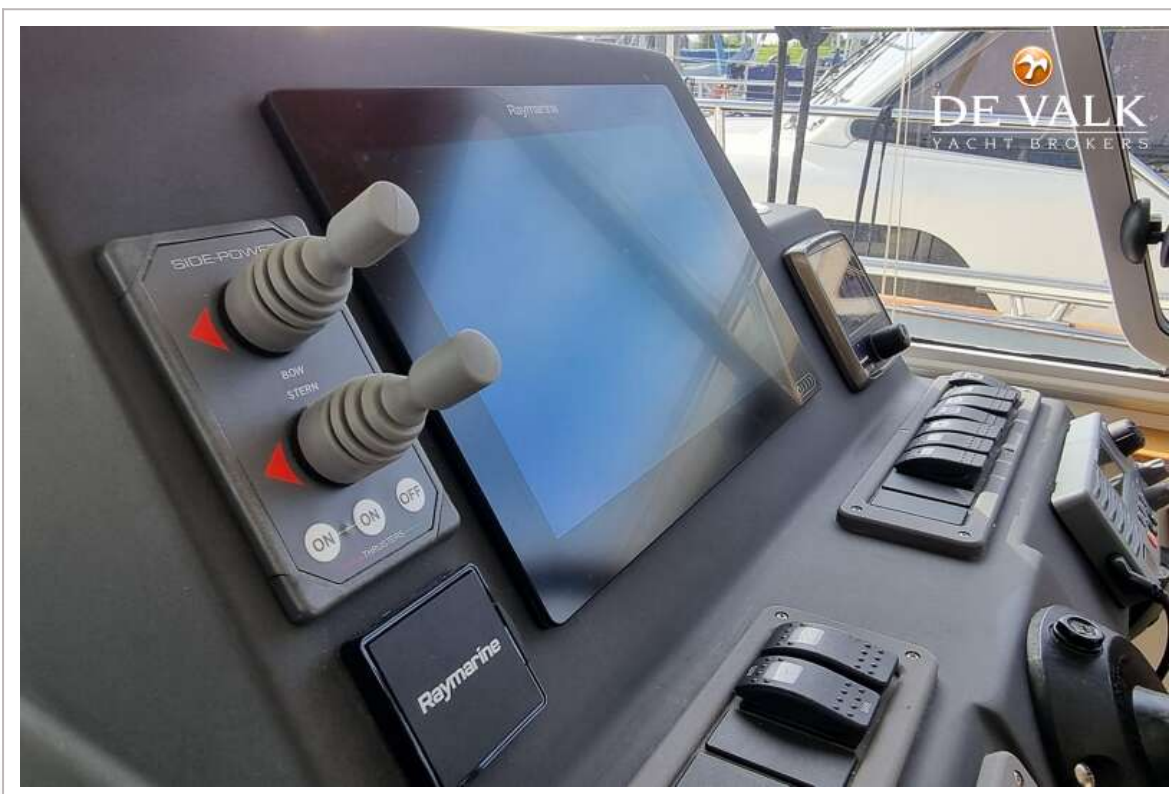
VIKNES 1030



VIKNES 1030



VIKNES 1030

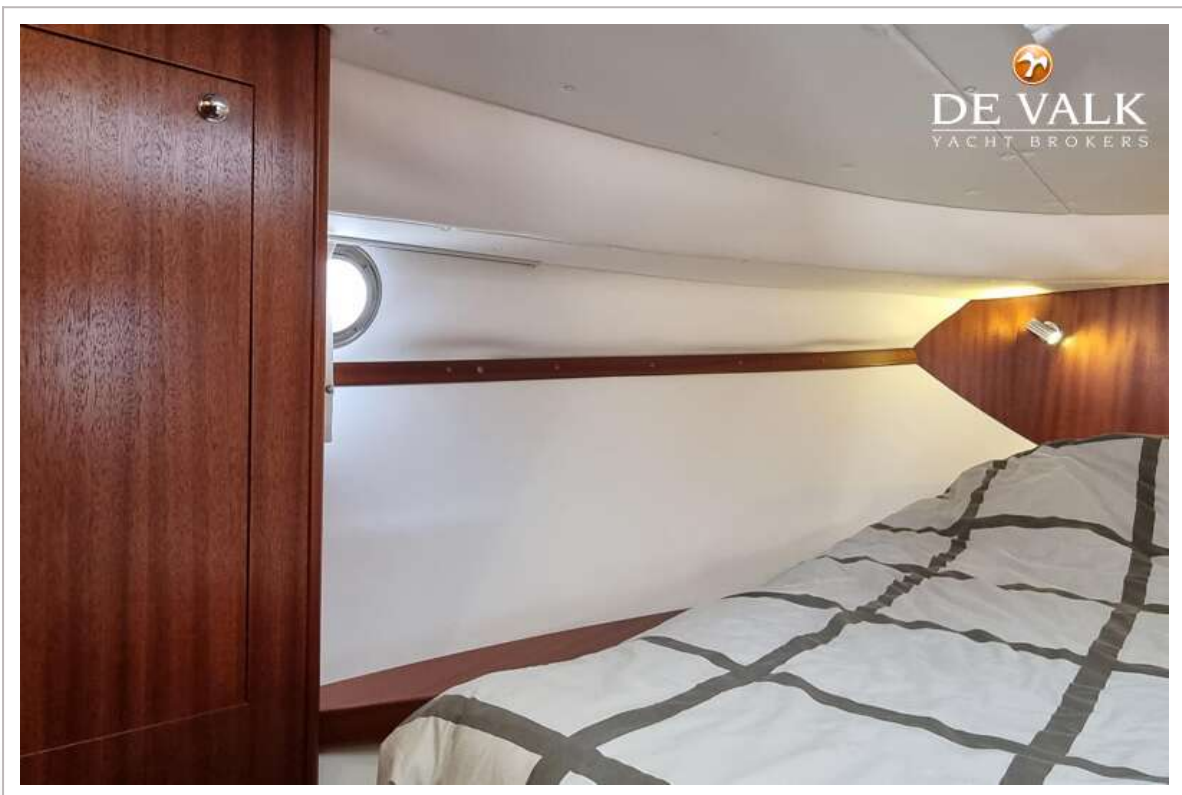


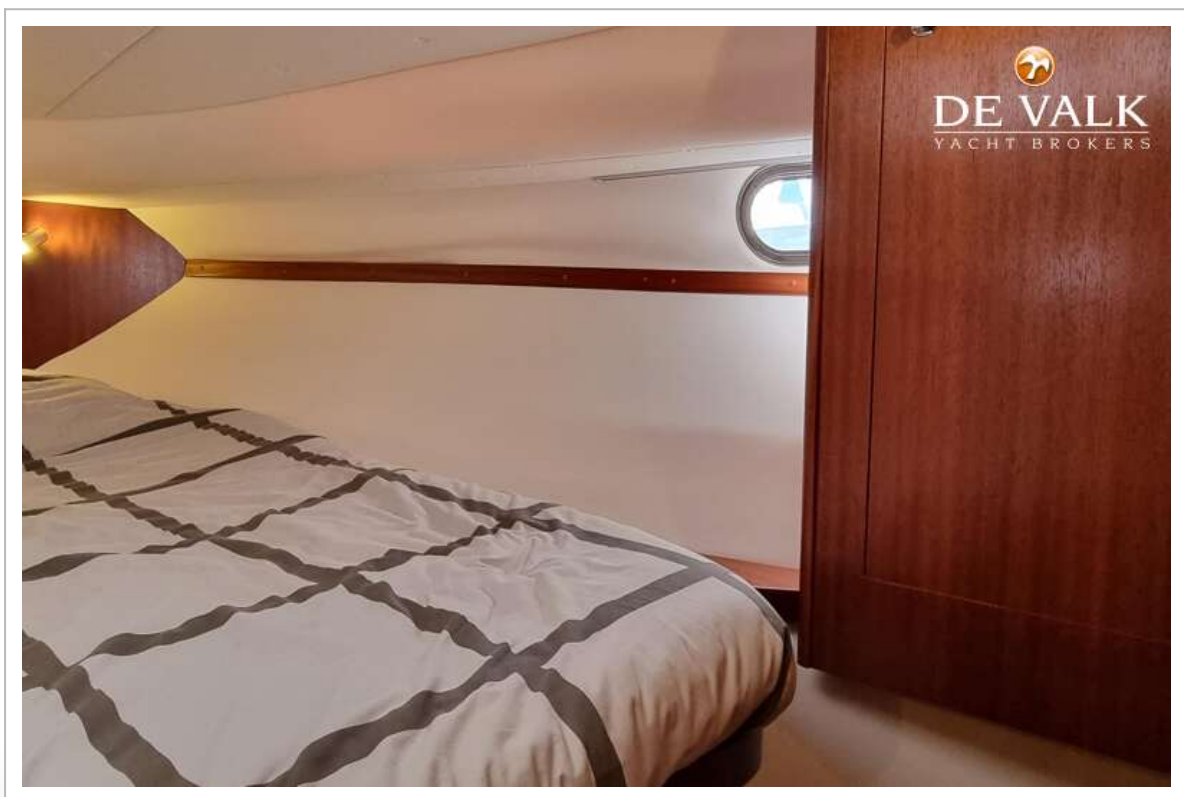


VIKNES 1030



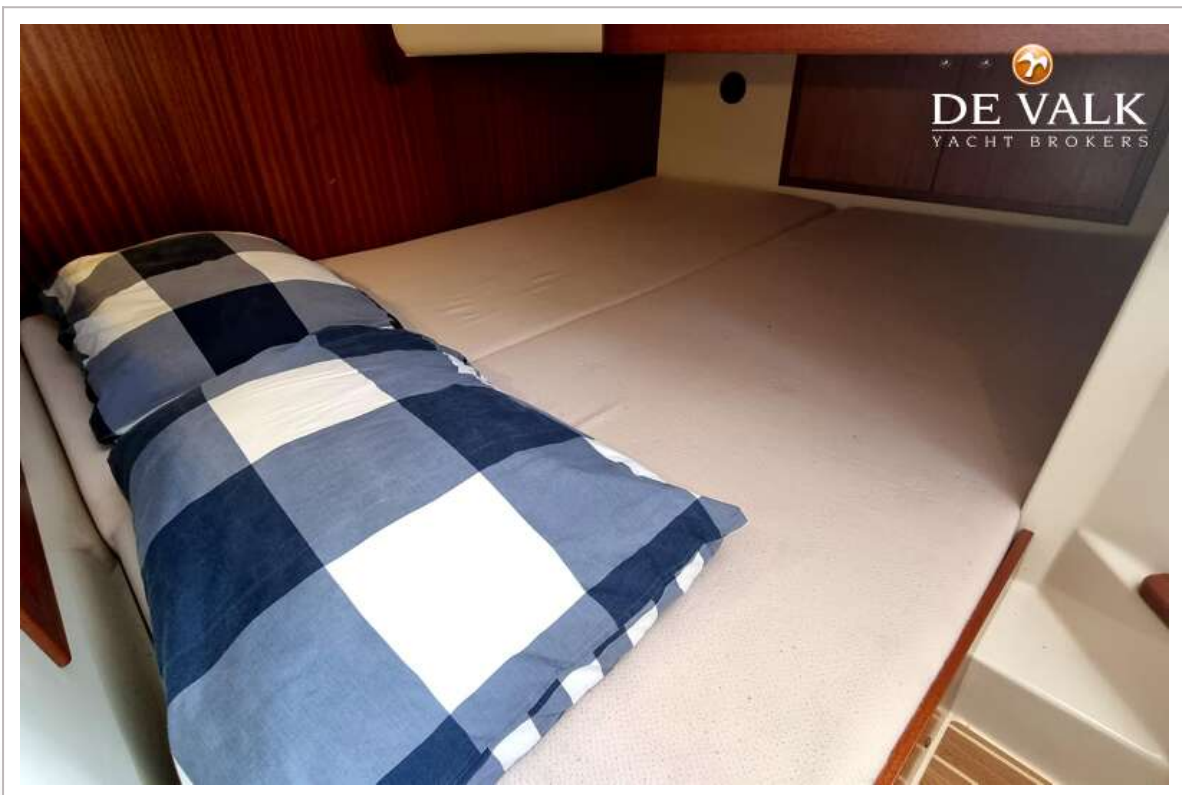
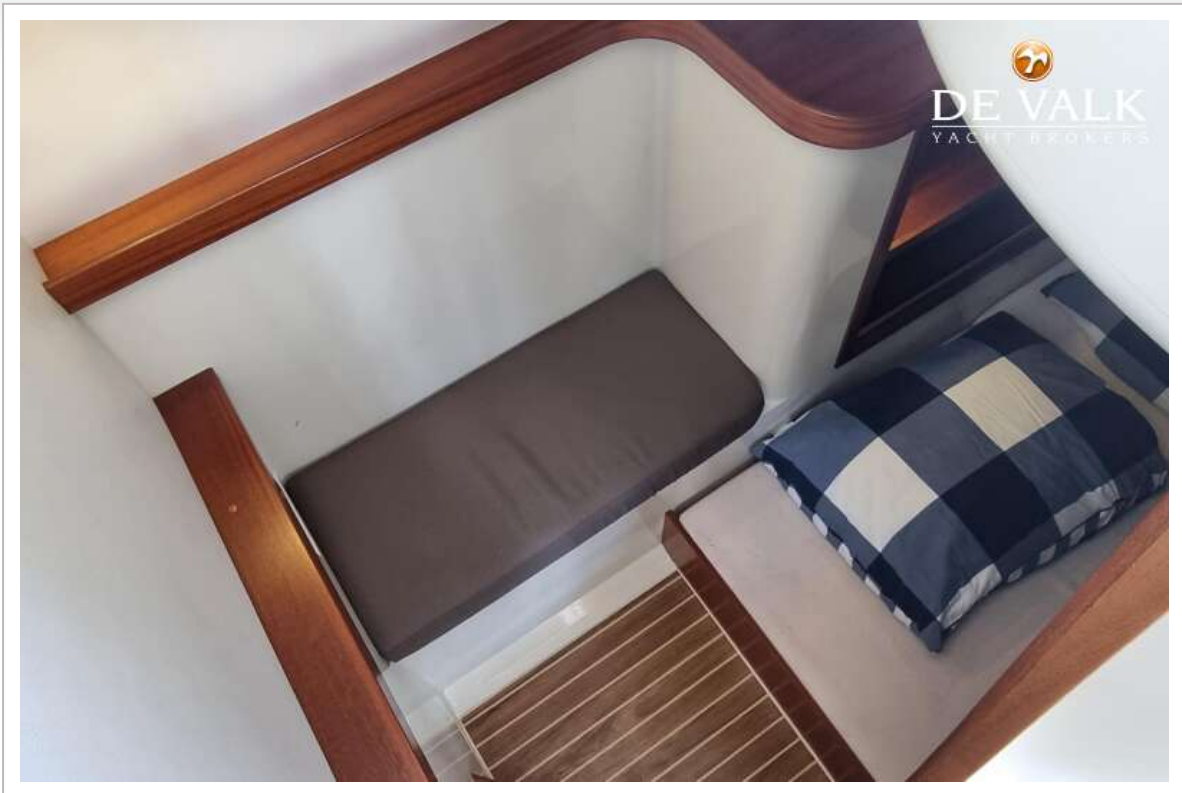
VIKNES 1030



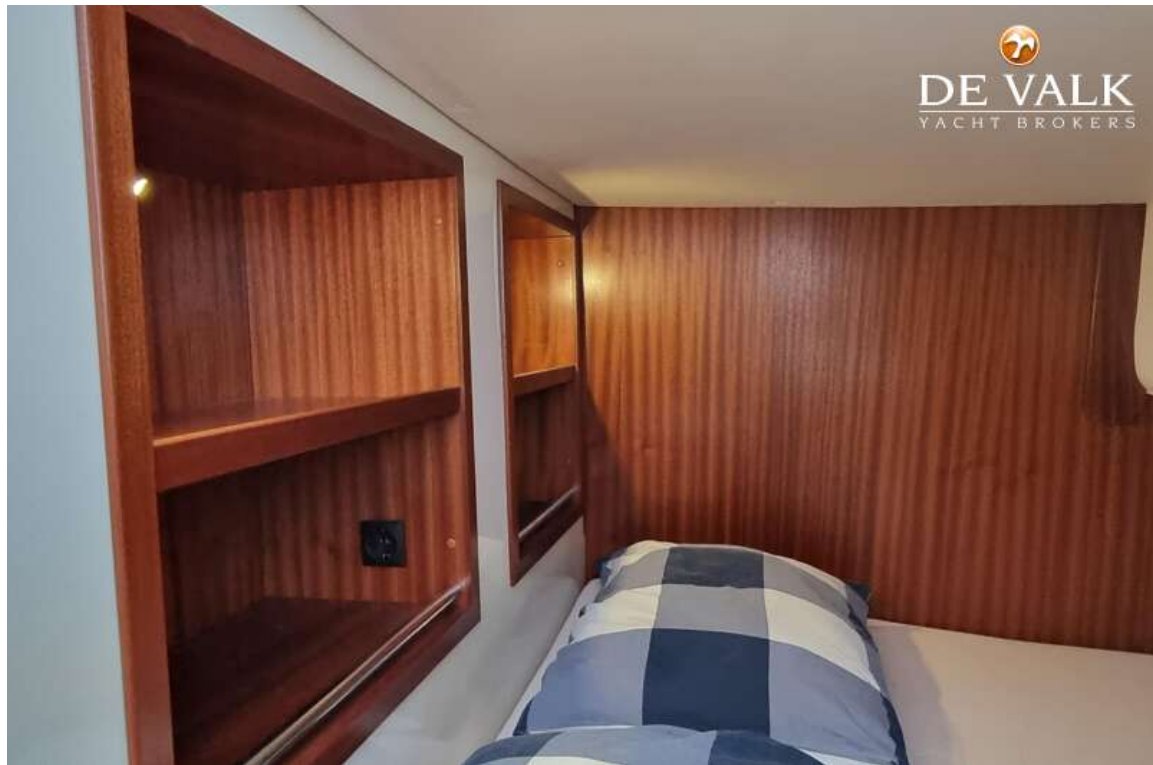


VIKNES 1030

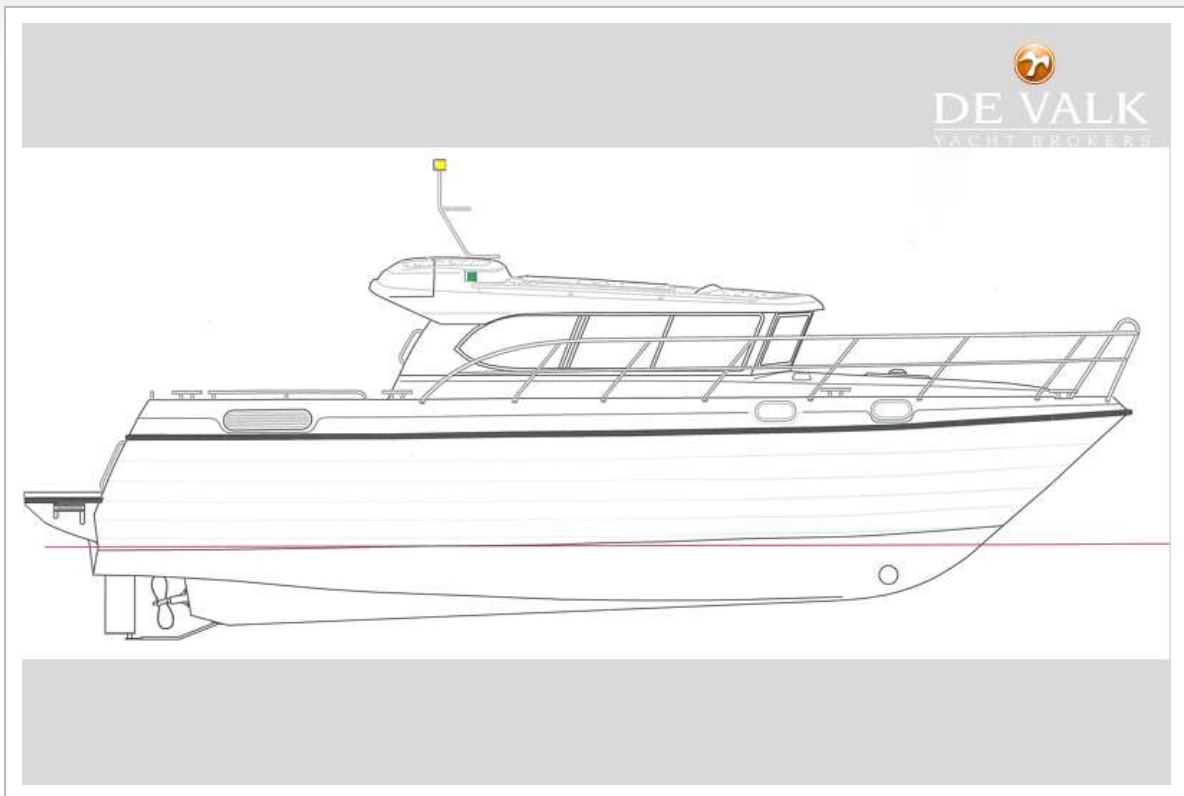




VIKNES 1030



VIKNES 1030



VIKNES 1030



