



DE VALK
YACHT BROKERS



BARKAS 1200 OK



DE VALK
YACHT BROKERS

BROKERAGE | CHARTER | BERTHS | FINANCE | INSURANCE | YACHT MANAGEMENT

BARKAS 1200 OK

BROKER'S COMMENTS

The well-known Lammert Huitema came up with a motor yacht with the appearance of a workboat with an efficient underwater body and a unique appearance. Successfully, several Barkassen of all kinds of versions and designs soon followed. The Huitema Barkassen remain the most beautiful and truly deserve the brand "Barkas". This classic Barkas 1200 with open cockpit was built by Vroegh & Alblas together with Drinkwaard Betimmeringen. She has a large cockpit, a beautiful owner's cabin with separate shower and toilet and a real guest cabin with 3 beds. A sturdy and classic Barkas from her 2nd owner.

Marc Weijenberg

SPECIFICATIONS

Dimensions	12.30 x 4.10 x 1.10 (m)	Builder	Vroegh & Alblas / Drinkwaard Betimmering
Built	1995	Cabins	2
Material	Steel	Berths	5
Engine(s)	1 x Iveco Aifo 8061 M12 diesel	Hp/Kw	110.00 (hp), 80.96 (kw)
Asking price	sold (VAT)	Lying	The Netherlands

CONTACT

Sales office	De Valk Thuishaven	Telephone	+31 35 5829042
Address	Peperstraat 7 1411 PX Naarden NL	E-mail	thuishaven@devalk.nl

DISCLAIMER

These particulars are given in good faith as supplied but cannot be guaranteed.



GENERAL

Model	BARKAS 1200 OK
Type	motor yacht
LOA (m)	12,30
Beam (m)	4,10
Draft (m)	1,10
Air draft (m)	3,40
Headroom (m)	1,95
Year built	1995
Builder	Vroegh & Alblas / Drinkwaard Betimmering
Country	The Netherlands
Designer	L.M. Huitema
Displacement (t)	14
Ballast (tonnes)	lead Trimballast
Hull material	steel
Hull shape	multi hard chine
Keel type	long keel
Superstructure material	steel
Rubbing strake	fender rope
Deck finish	non-skid paint
Cockpit deck finish	teak
Window material	glass Vetus
Deckhatch	1 x
Portholes	Gebo
Insulation	rockwool
Mast can be lowered	manual
Fuel tank (litre)	steel 1 x 1000
Level indicator (fuel tank)	yes
Freshwater tank (litre)	stainless steel 900 liter
Level indicator (freshwater)	yes
Blackwater tank (litre)	polyethylene 75



Blackwater tank extraction	pump
Inside helm position	hydraulic Vetus
Outside helm position	hydraulic Vetus
Emergency tiller	yes
Extra info	Because of the very large cockpit the outside helmstation is not an intrusion and so the skipper is very much amidst family/friends while cruising. The height above the waterline (no radar, mast etc) 2,80 mtr
Extra info	Blackwatertank empties via 24v pump, toilet has change-over valve (tank or discharge)
Extra info	Gebo deck hatch with flyscreen and blind, portholes have flyscreens. In the salon there are two windows that can be opened for extra ventilation.

ACCOMMODATION

Cabins	2
Berths	5
Interior	teak
Floor	Teak & holly and carpets
Open cockpit	yes
Pilot house/deck saloon	with 360 degree views
Headroom saloon (m)	1,95
Heating	diesel ducted hot air Eberspaecher D5
Chart table	annex desk
Dinette	U-shape with adjustable table
Opening door to cockpit	2 x
Galley	yes
Sink	1 x
Cooker	calor gas 4 burner
Oven	calor gas Smev
Gas alarm	Vetus (defect)
Fridge	Dometic with freezer compartment
Hot water system	220V + engine



BARKAS 1200 OK

Water pressure system	electrical
Owners cabin	double bed
Bed length (m)	2,00 x 1,50 mtr, headroom; 1,84 mtr
Wardrobe	hanging/drawers/shelves
Bathroom	separate l
Toilet	separate
Toilet system	electric Vetus
Wash basin	2 x
Shower	separate
Guest cabin 1	double bed + single bed
Bed length (m)	1,95 x 1,30 mtr plus 1,95 x 0,50 mtr, headroom; 1,80 mtr
Wardrobe	hanging and shelves

MACHINERY

No of engines	1
Make	Iveco Aifo
Type	8061 M12
HP	110
kW	80.96
Fuel	diesel
Year installed	1995
Maximum speed (kn)	8,8
Cruising speed (kn)	7
Consumption (l/hr)	5
Engine hours	2495
Engine cooling system	freshwater heat exchanger
Drive	shaft
Engine controls	bowden cable
Gearbox	hydraulic ZF IRM50
Bowthruster	electric Cupa (24v)
Exhaust	watercooled



BARKAS 1200 OK

Thrust bearing	Scatra
Propeller type	fixed
Propeller blades	4
Propeller shaft material	stainless steel
Shaft lubrication	grease
Electric bilge pump	yes
Electrical installation	24v/220v
Start battery	2 x 125ah (2023)
Service battery	4 x 190ah (2021)
Bowthruster battery	2 x (2023) for bowthruster and windlass
Battery charger	Mastervolt 24v/50amp
Inverter	Mastervolt 24v/220v/1500watt
Shorepower	with cable

NAVIGATION

Electric compass	Autohelm ST50
Depth sounder	Autohelm ST50
Log	Autohelm ST50
Repeater	Autohelm ST50 (log + echo)
VHF	Sailtron rt2048
VHF handheld	Icom IC-M31
Autopilot	Vetus Pilot AP2S (hydraulic)
Rudder angle indicator	via autopilot
Radar	Furuno Navnet
GPS	Furuno
Plotter	Furuno Navnet
Electronic chart(s)	yes
AIS transponder	EM-trak Class B (2023)
Navigation lights	yes

EQUIPMENT



Cockpit cover	annex bimini
Cockpit table	1 x
Cockpit chairs	4 x
Boarding ladder	stainless steel
Deck shower	hot & cold
Anchor chain	Approx. 30 mtr
Windlass	electrical Vetus Alexander II (24v)
Capstan	Vetus
Sea railing	stainless steel
Grab rail (superstructure)	stainless steel
Railing side opening gates	2 x
Pushpit	stainless steel
Pulpit	stainless steel
Wiper	3 x Exalto
Horn	yes
Fenders	yes
Mooring lines	yes
Spare parts	yes
TV	yes
Radio-cd player	yes
Speakers in salon	yes
Clock - barometer	yes
Latest extinguisher survey	yes



BARKAS 1200 OK



BARKAS 1200 OK



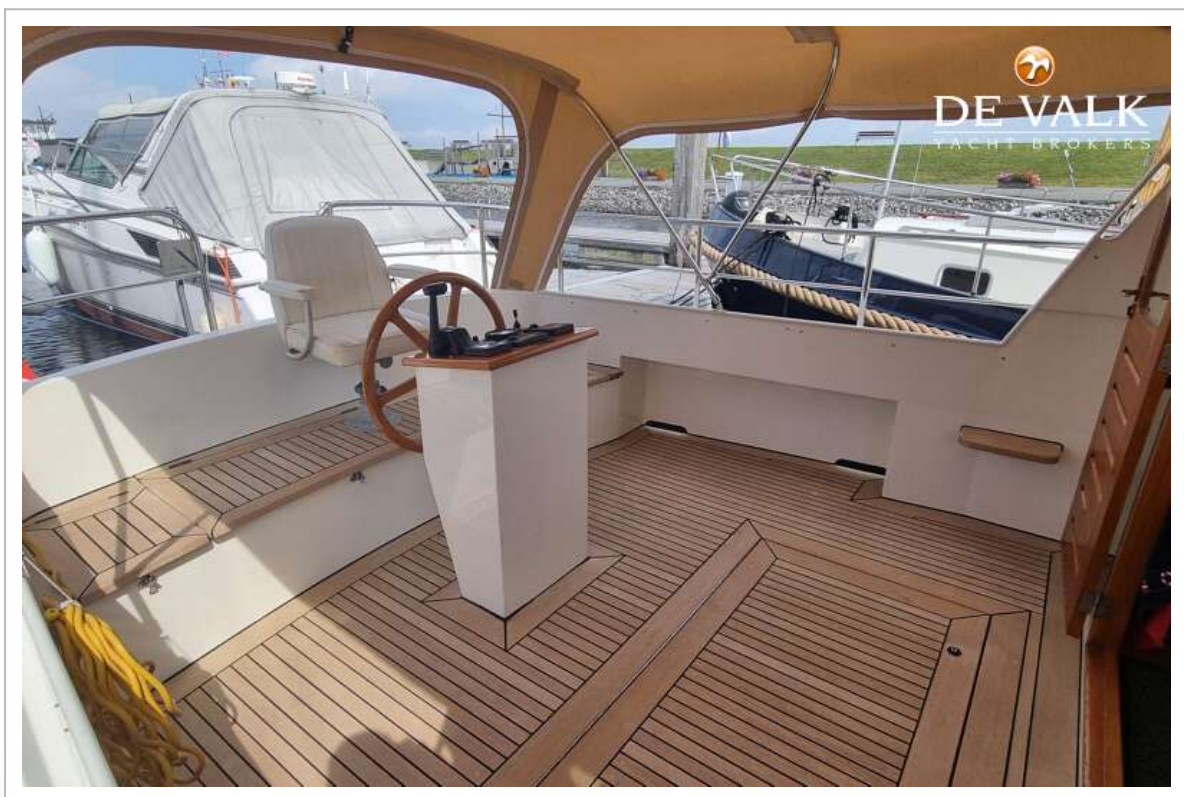
BARKAS 1200 OK



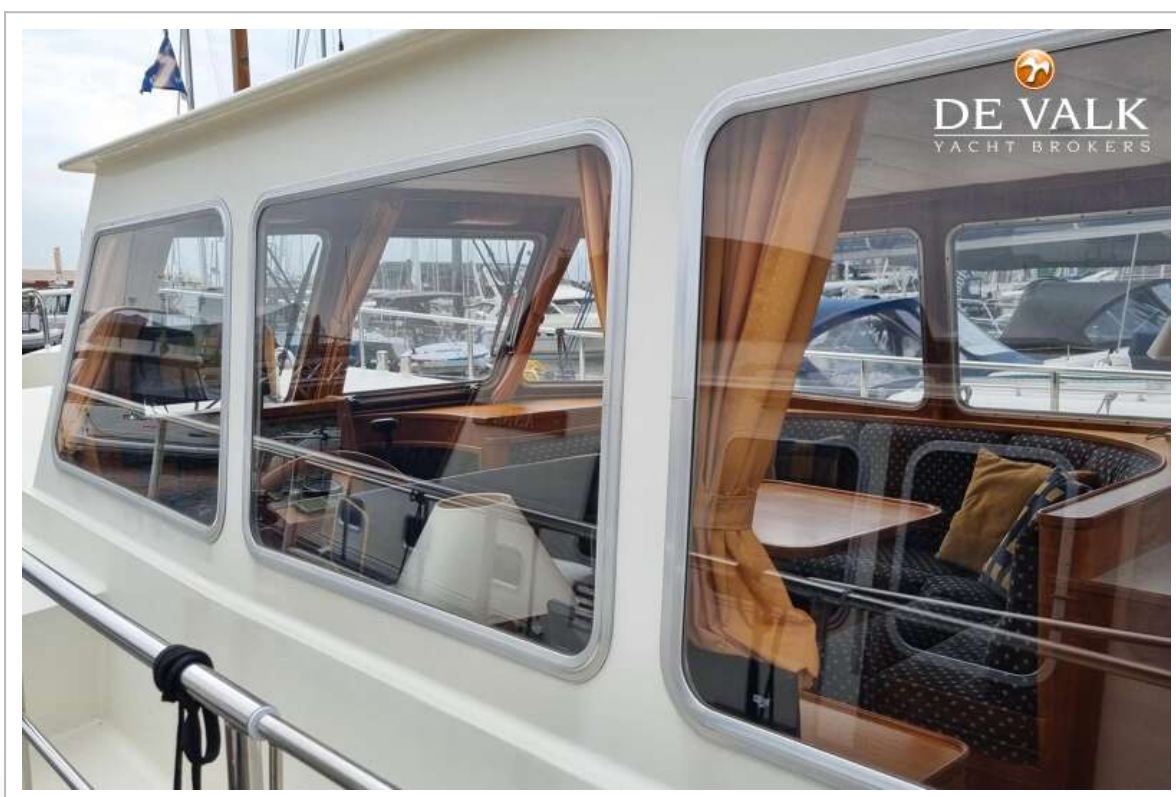
BARKAS 1200 OK



BARKAS 1200 OK



BARKAS 1200 OK



BARKAS 1200 OK



BARKAS 1200 OK



BARKAS 1200 OK



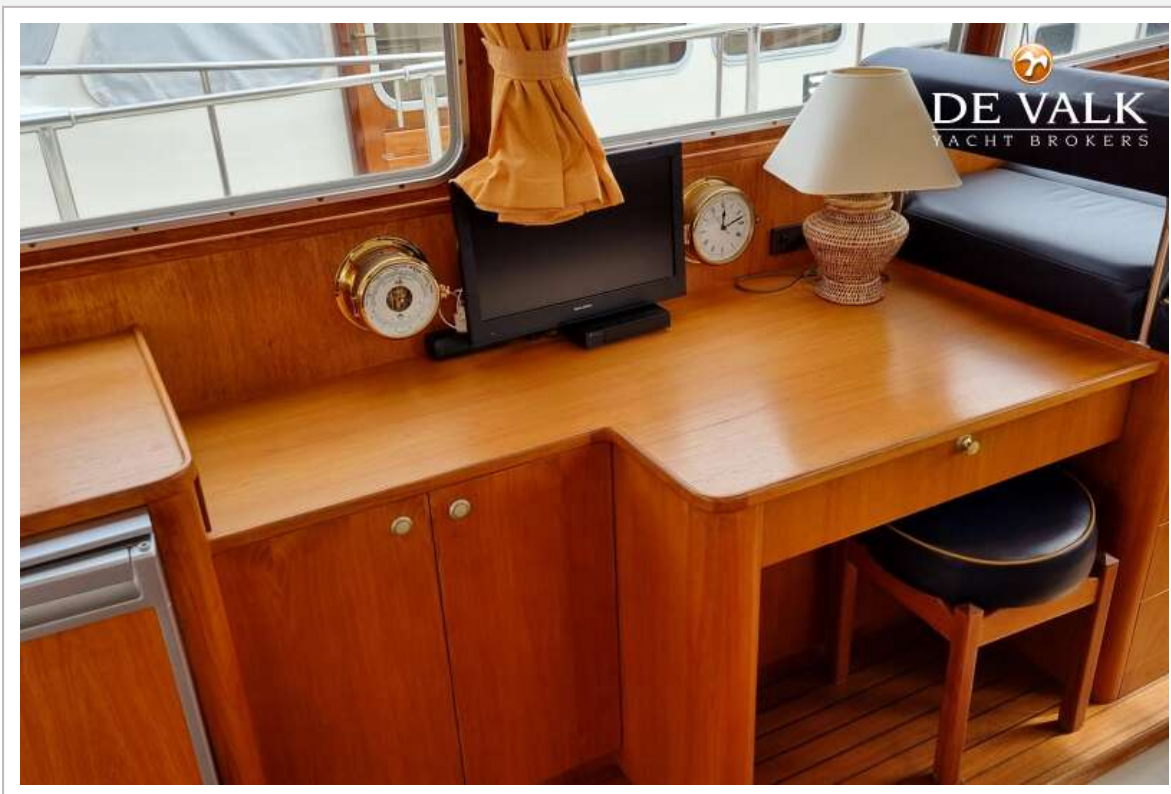
BARKAS 1200 OK



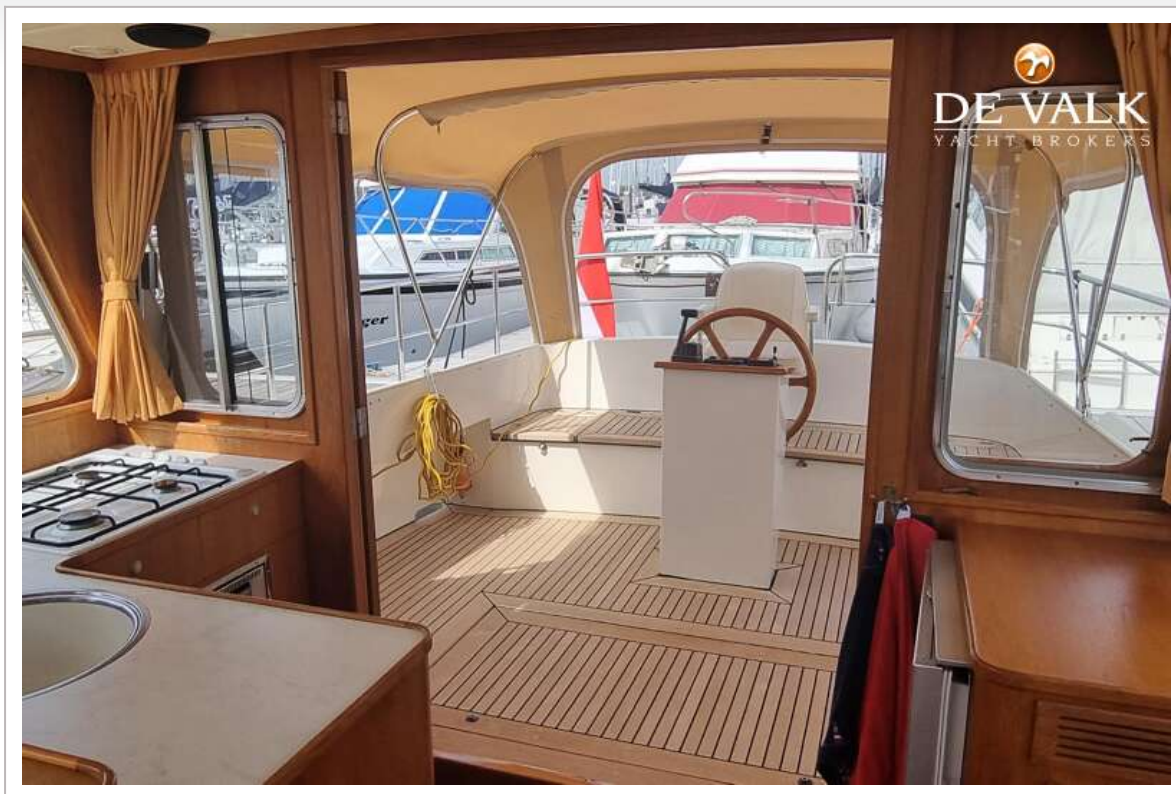
BARKAS 1200 OK



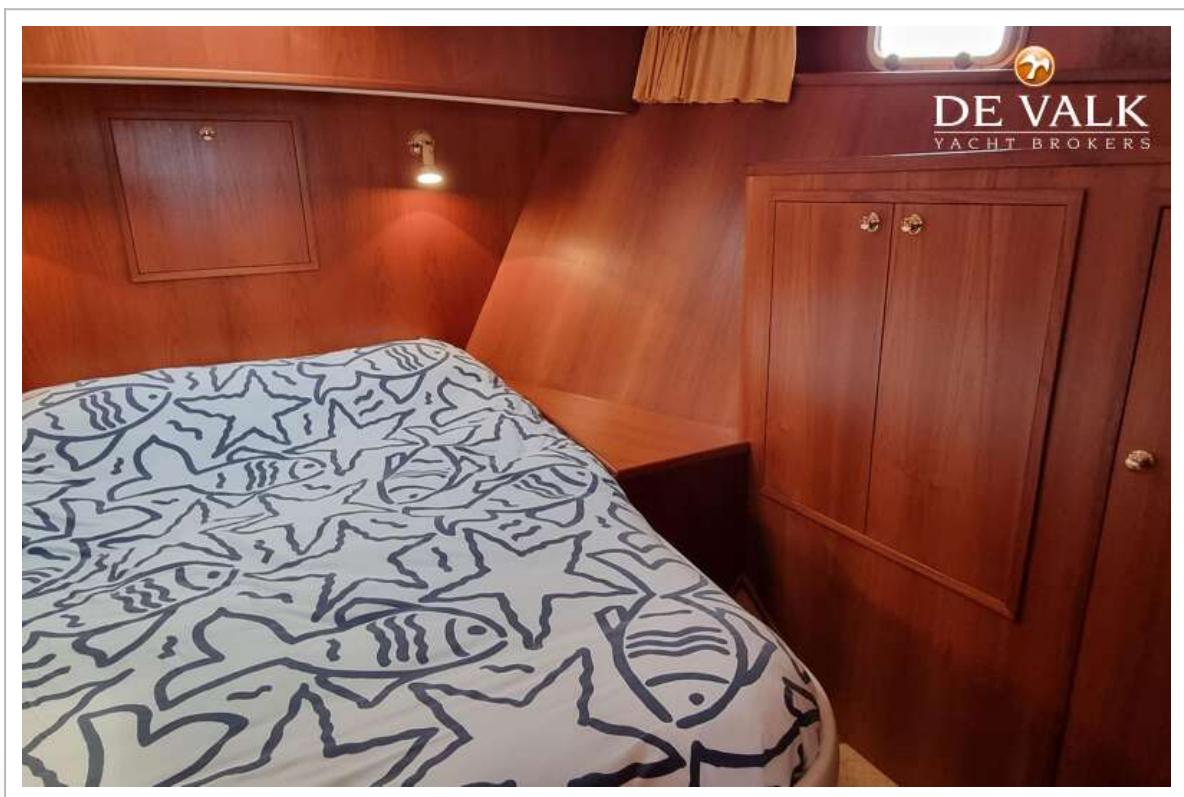
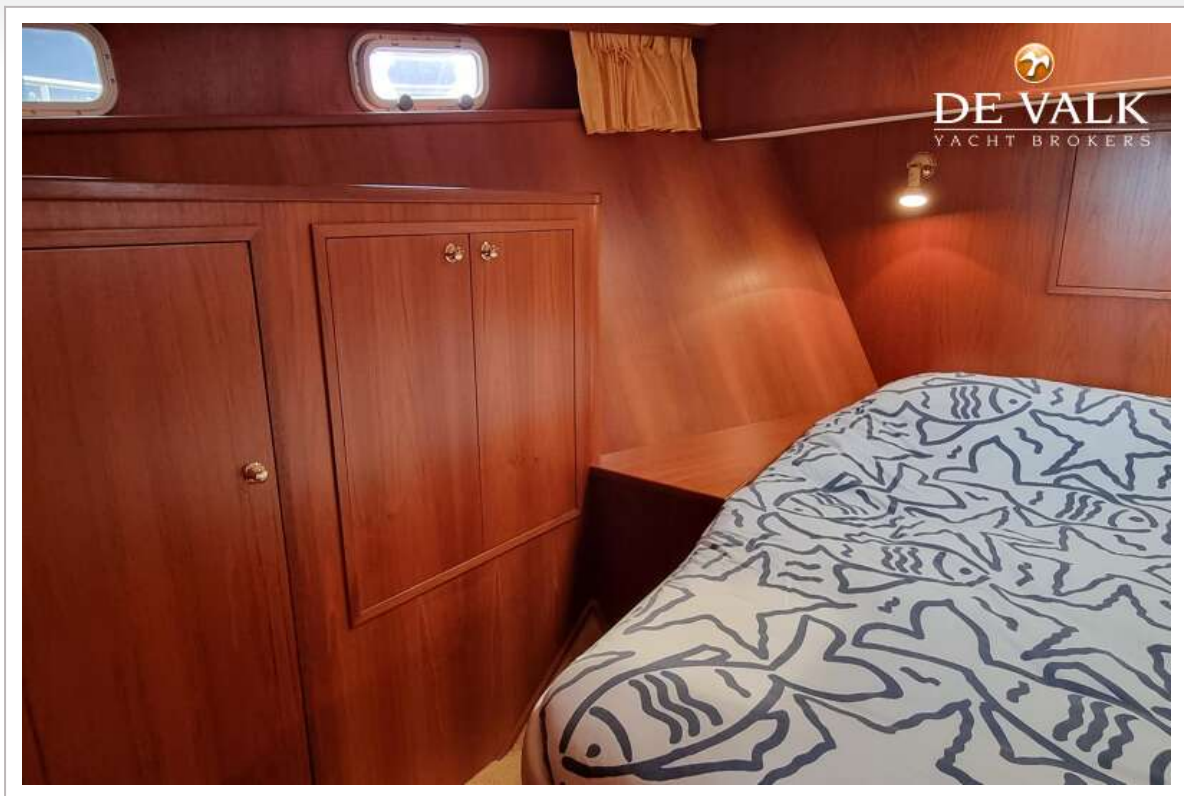
BARKAS 1200 OK



BARKAS 1200 OK



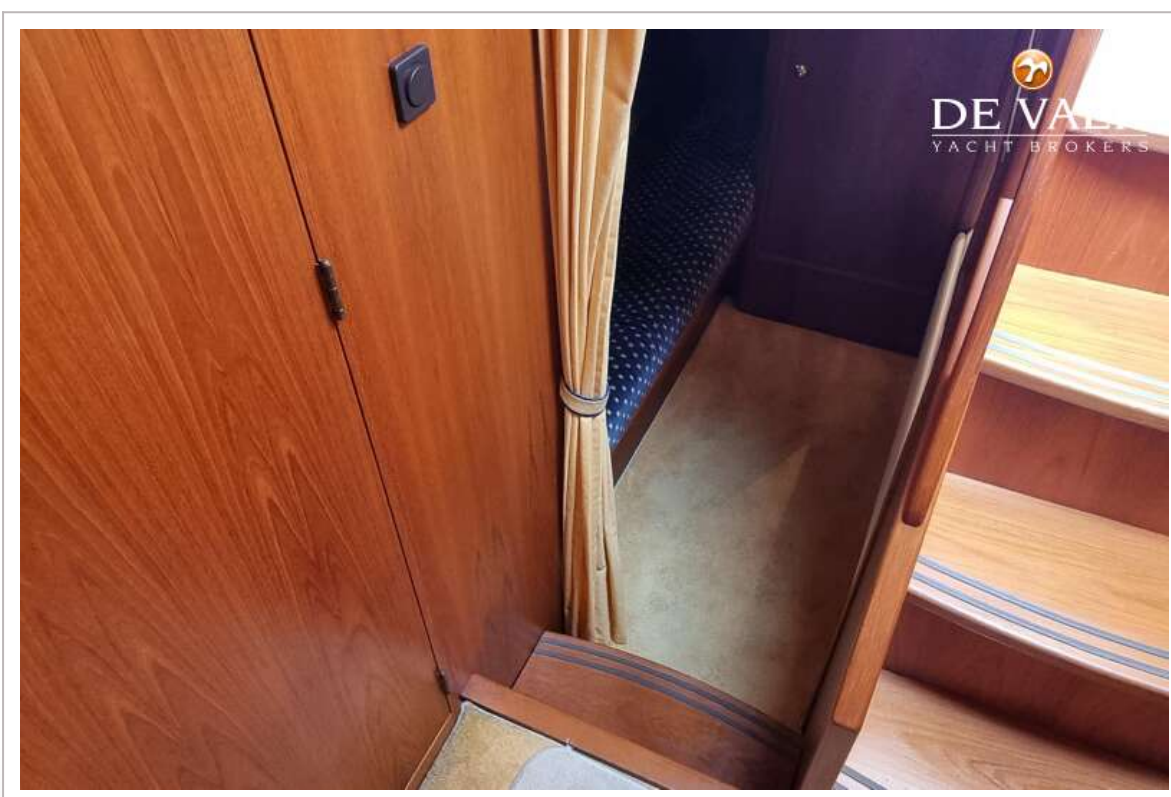
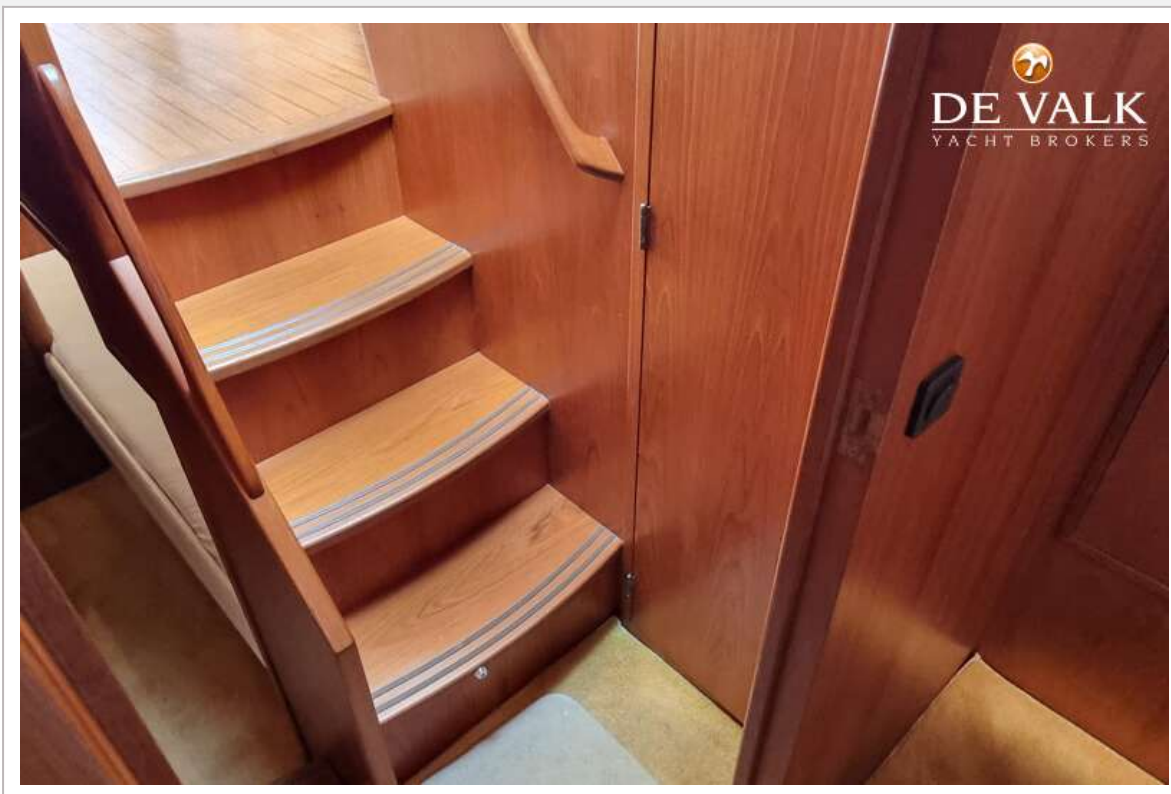
BARKAS 1200 OK



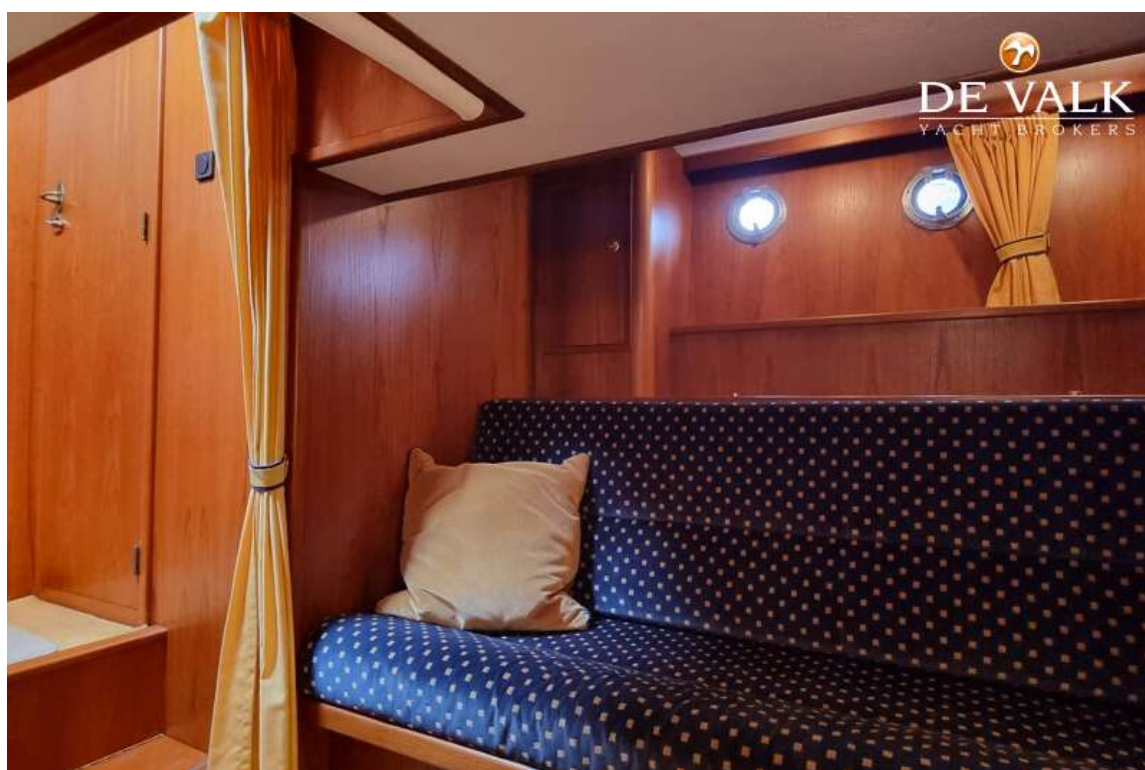
BARKAS 1200 OK



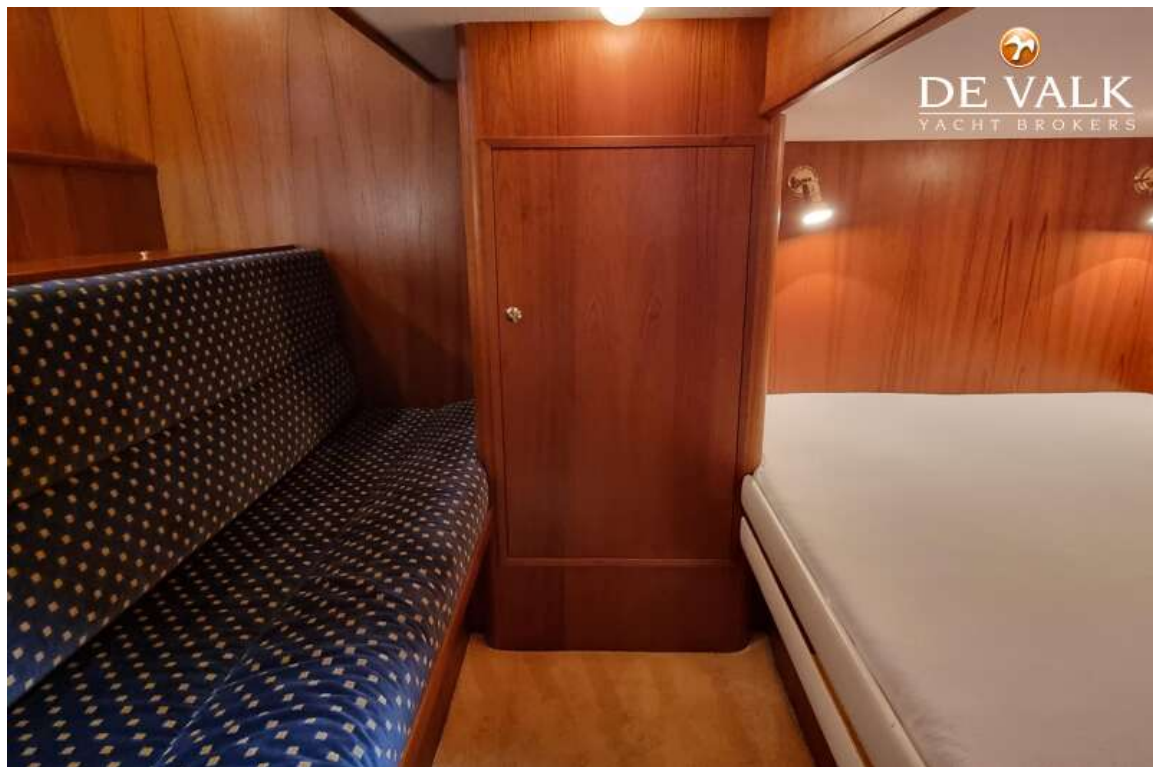
BARKAS 1200 OK



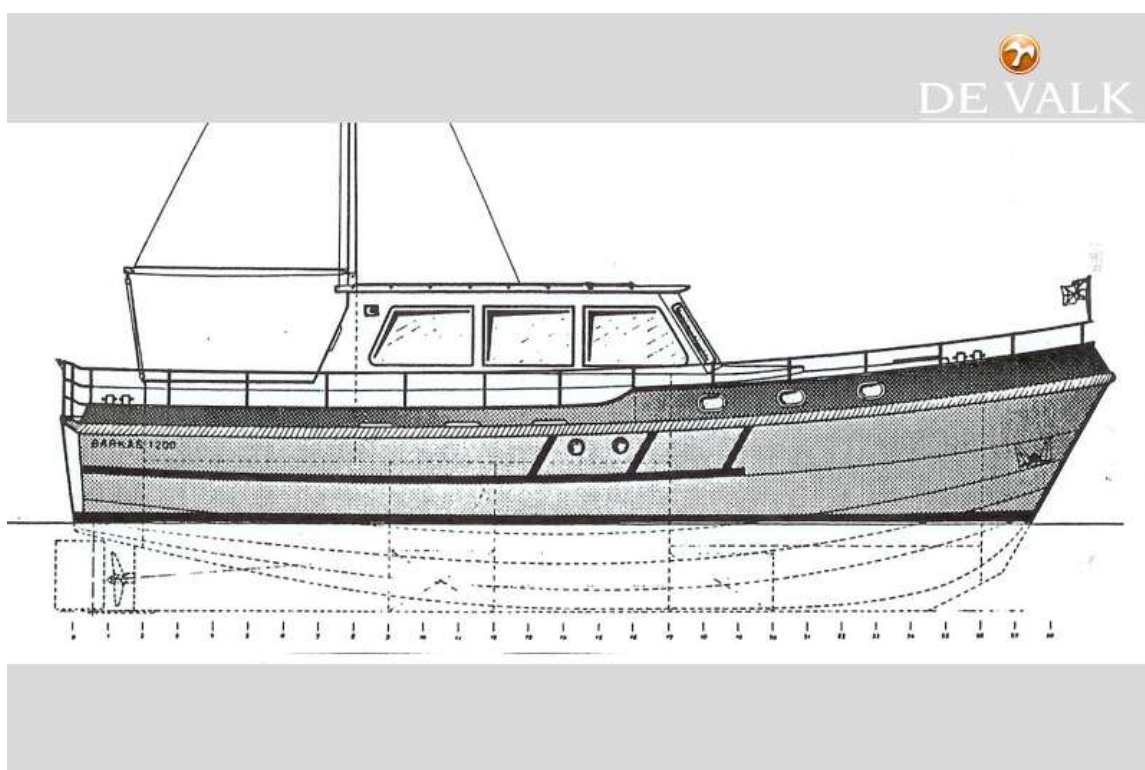
BARKAS 1200 OK



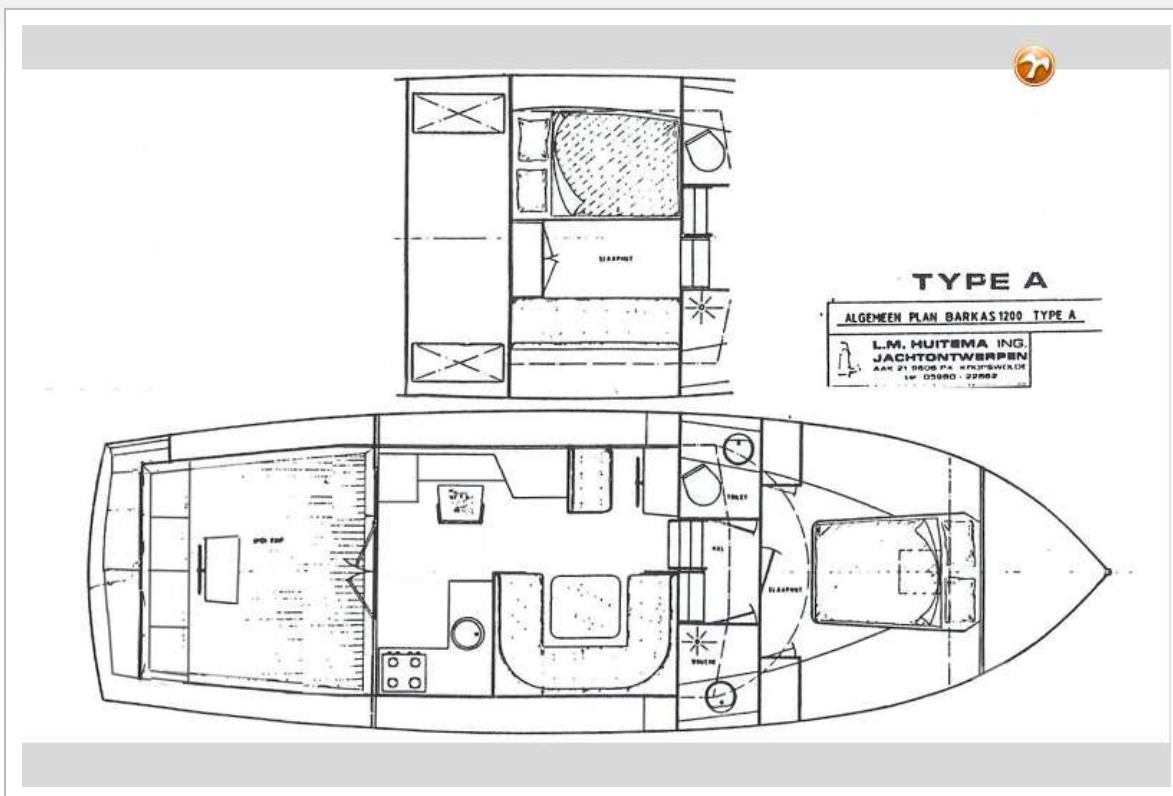
BARKAS 1200 OK



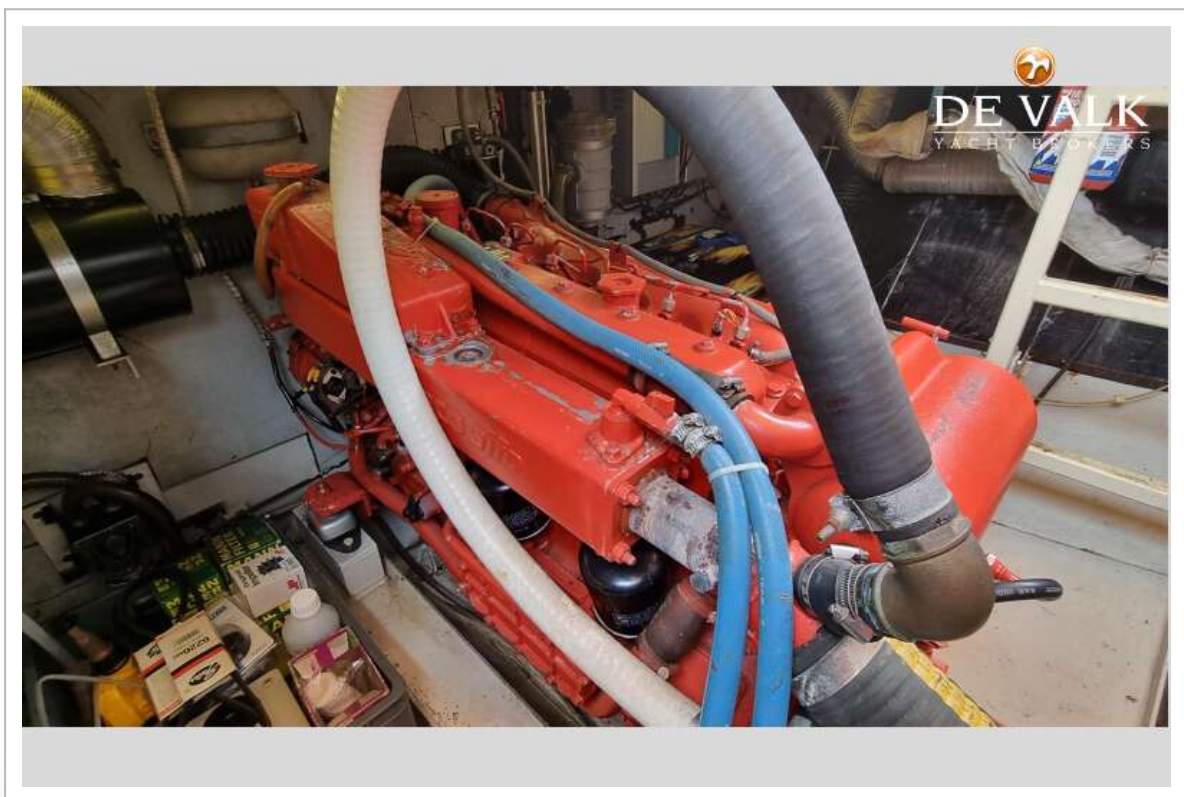
BARKAS 1200 OK



BARKAS 1200 OK



BARKAS 1200 OK



BARKAS 1200 OK

