



RO/PAX DOUBLE ENDED FERRY 78 M

RO/PAX DOUBLE ENDED FERRY 78 M

BROKER'S COMMENTS

Open type Double ended RO/PAX FERRY INSB CLASS that was built in a Perama Shipyard in Greece in 2018. Ferry equipped with a VETH X 4 rudder prop system VZ-400.

Sofia Iliia-Salvanou

SPECIFICATIONS

Dimensions	78.60 x 16.50 x 0.00 (m)	Builder	
Built	2018	Cabins	2
Material	Steel	Berths	
Engine(s)	4 x CATERPILLAR C18 diesel	Hp/Kw	4 x 600.00 (hp), 441.60 (kw)
Asking price	€ 5.500.000 (VAT Not paid)	Lying	elsewhere / Not at sales office

CONTACT

Sales office	De Valk Corfu	Telephone	(+30) 266 111 8095
Address	New Port of Corfu, near Gouvia Marina 490 83 Corfu GR	E-mail	corfu@devalk.nl

DISCLAIMER

These particulars are given in good faith as supplied but cannot be guaranteed.



RO/PAX DOUBLE ENDED FERRY 78 M

GENERAL

Model	RO/PAX DOUBLE ENDED FERRY 78 M
Type	motor yacht
LOA (m)	78,60
Beam (m)	16,50
Year built	2018
Country	Greece
Gross tonnage	1.500
Hull material	steel
Hull colour	yellow
Superstructure material	steel
Deck material	steel
Deck finish	non-skid paint
Superstructure deck finish	non-skid paint
Window material	glass
Fuel tank (litre)	yes
Freshwater tank (litre)	yes
Blackwater tank (litre)	yes
Greywater tank (litre)	yes
Wheel steering	yes
Extra info	INSB CLASS
Extra info	308 passengers and 90 cars or 16 Trucks of 12m
Extra info	GARAGE HEADROOM 5,18m

ACCOMMODATION

Cabins	2
Air-conditioning	yes
Extra info	ELEVATOR FOR PASSENGERS

MACHINERY



RO/PAX DOUBLE ENDED FERRY 78 M

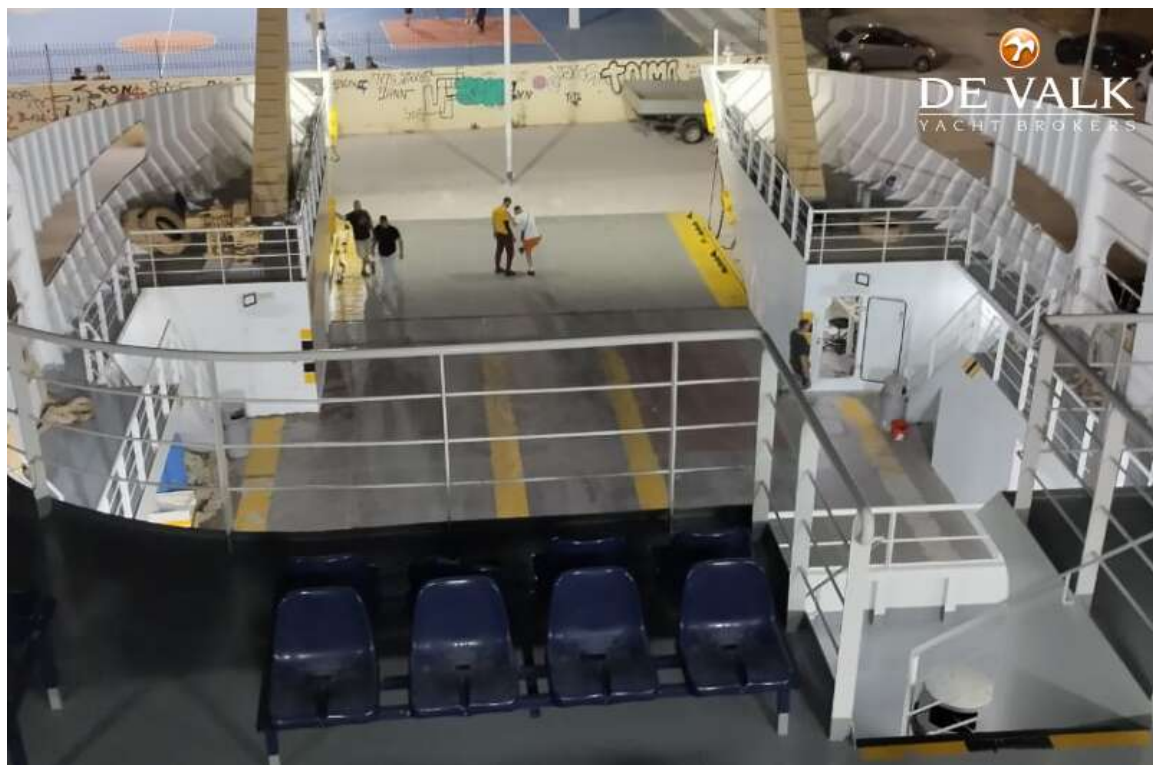
No of engines	4
Make	CATERPILLAR
Type	C18
HP	600
kW	441.60
Fuel	diesel
Year installed	2018
Maximum speed (kn)	13,5
Cruising speed (kn)	12
Propeller type	fixed X4 VETH RUDDER PROP SYSTEM VZ-400
Generator	X 3 CATERPILLAR 110 KVA EACH
Generator 2	X 1 EMERGENCY GENERATOR 80 KVA
Batteries	yes

NAVIGATION

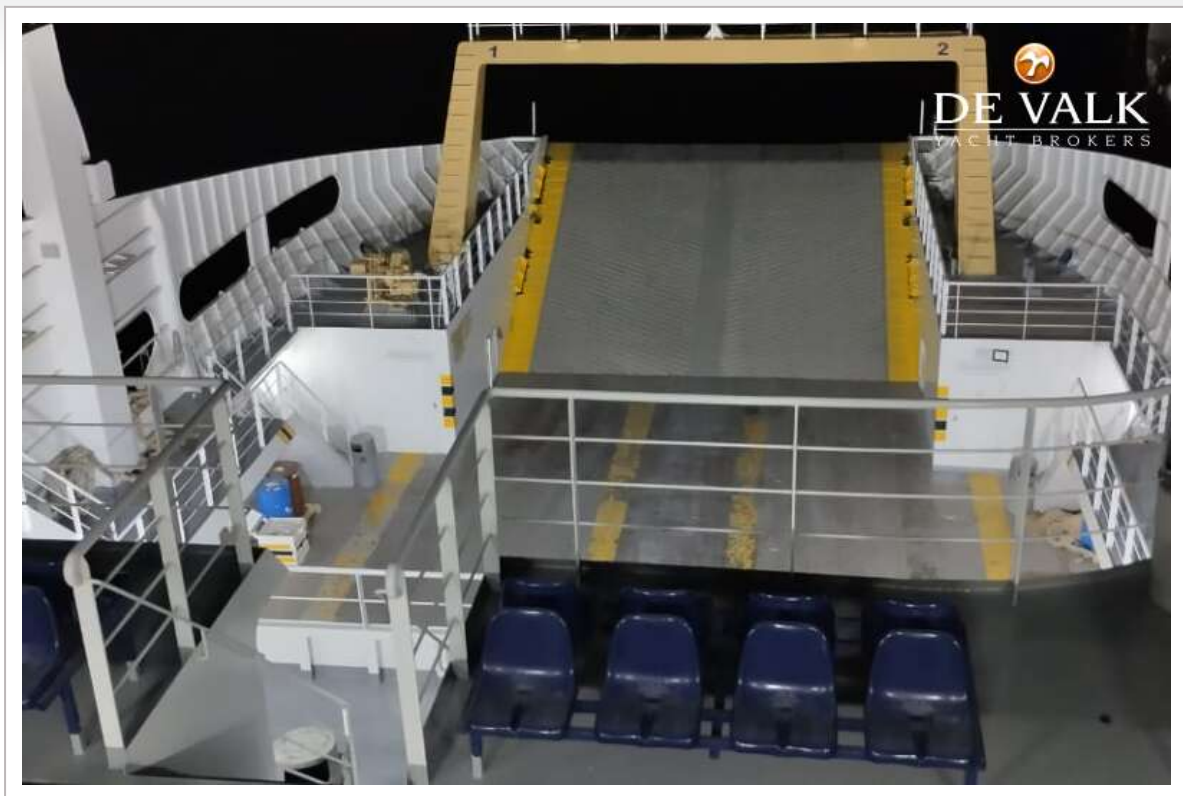
Compass	yes
Depth sounder	yes
VHF	yes
Autopilot	yes
Radar	X 2 ARPA
AIS receiver	yes
AIS transponder	yes
Navigation lights	yes
Extra info	GYRO



RO/PAX DOUBLE ENDED FERRY 78 M



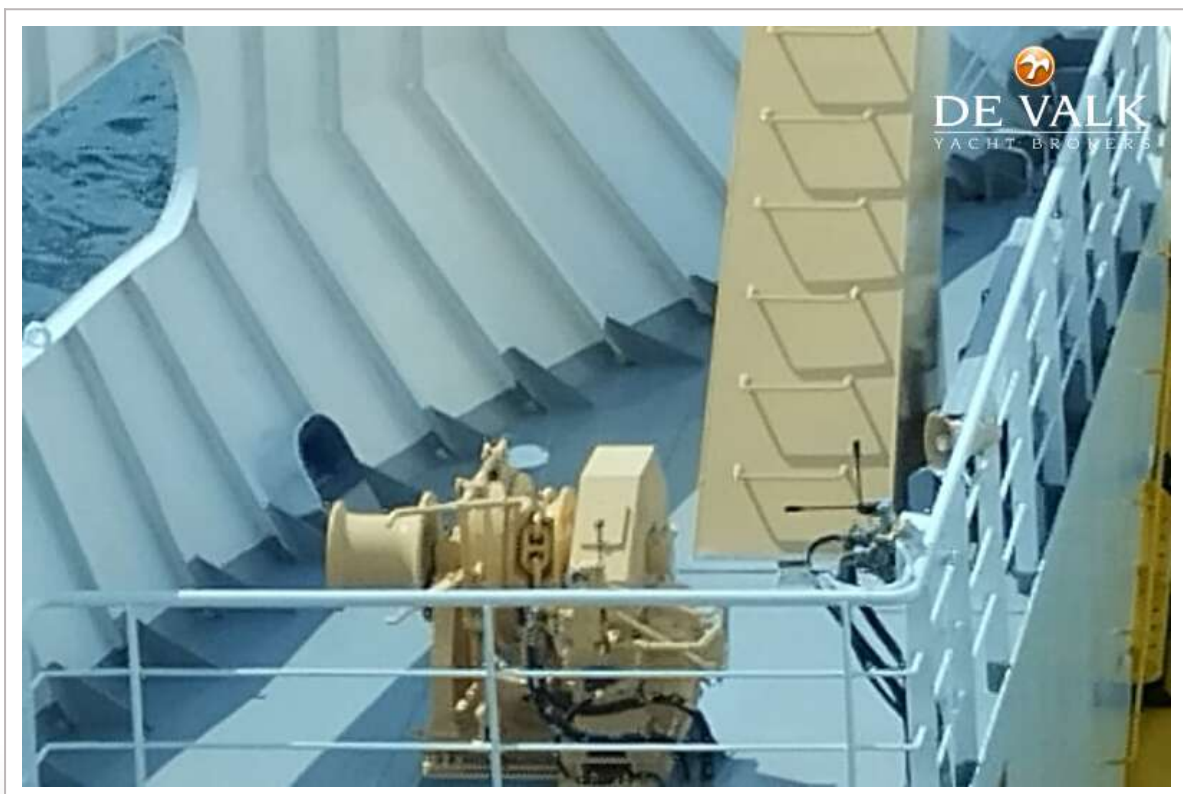
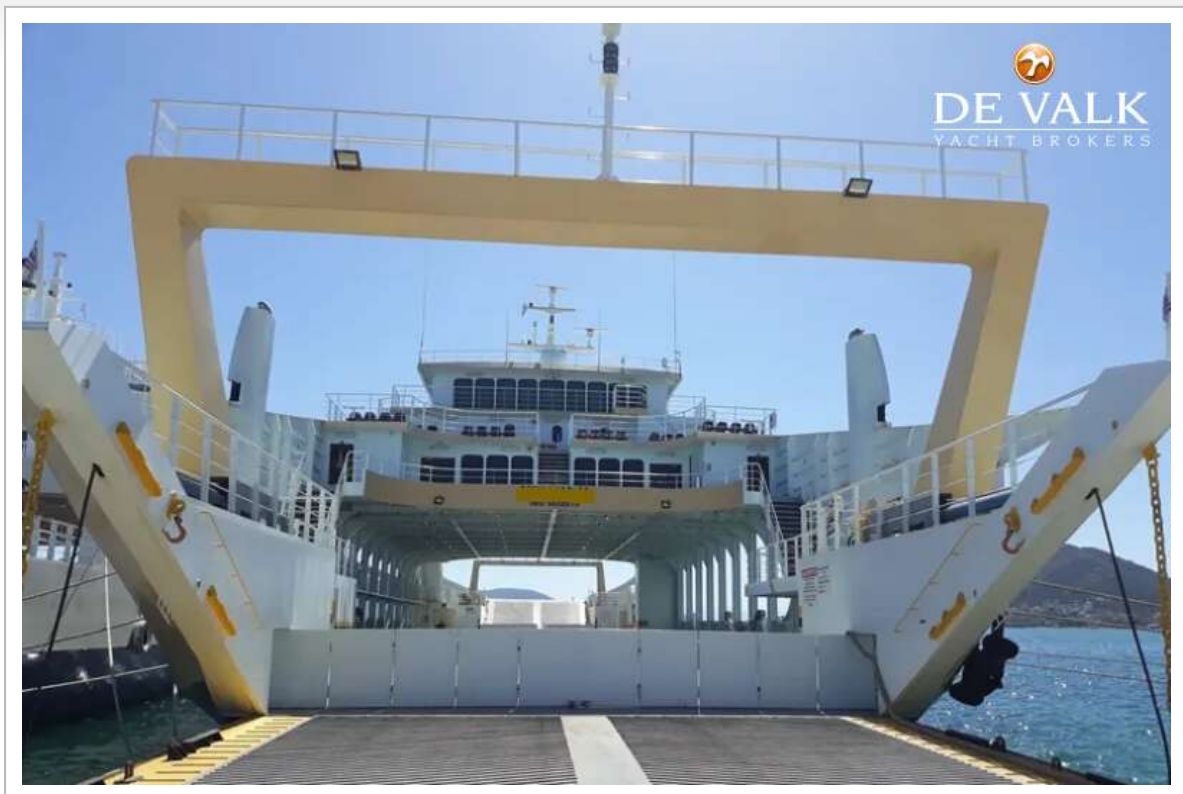
RO/PAX DOUBLE ENDED FERRY 78 M



RO/PAX DOUBLE ENDED FERRY 78 M



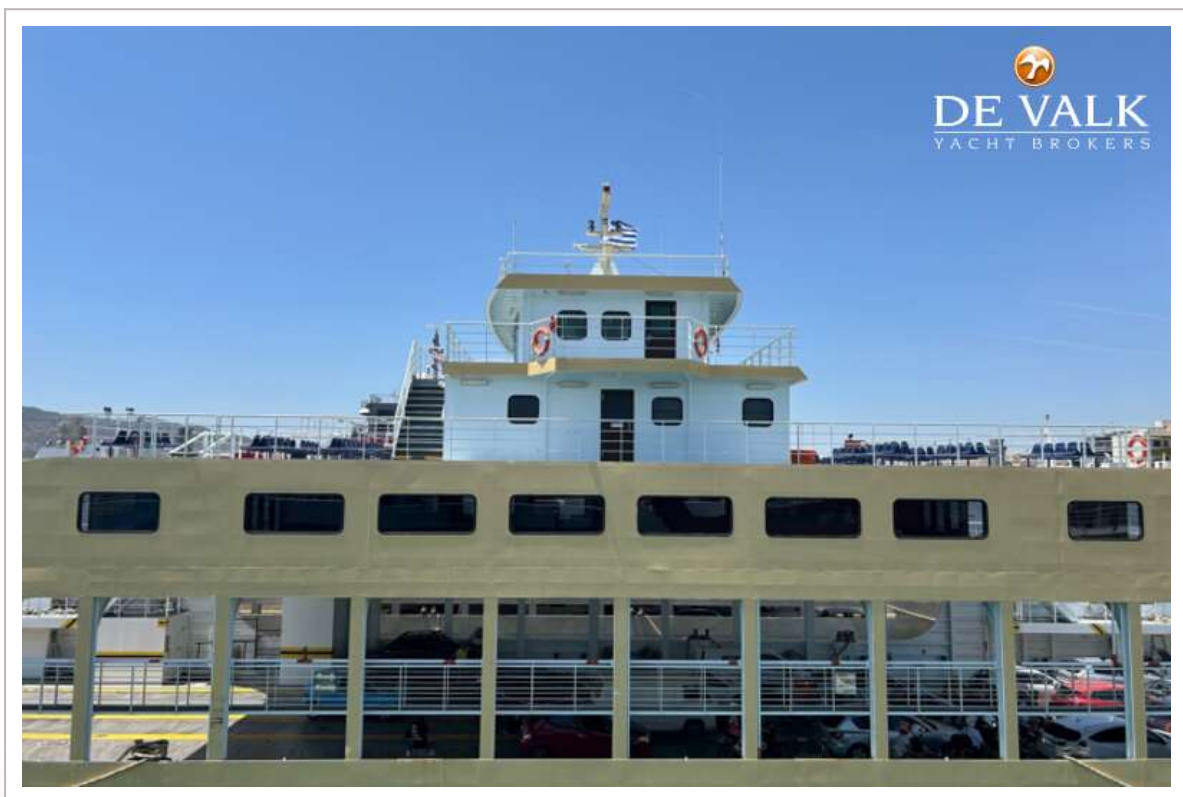
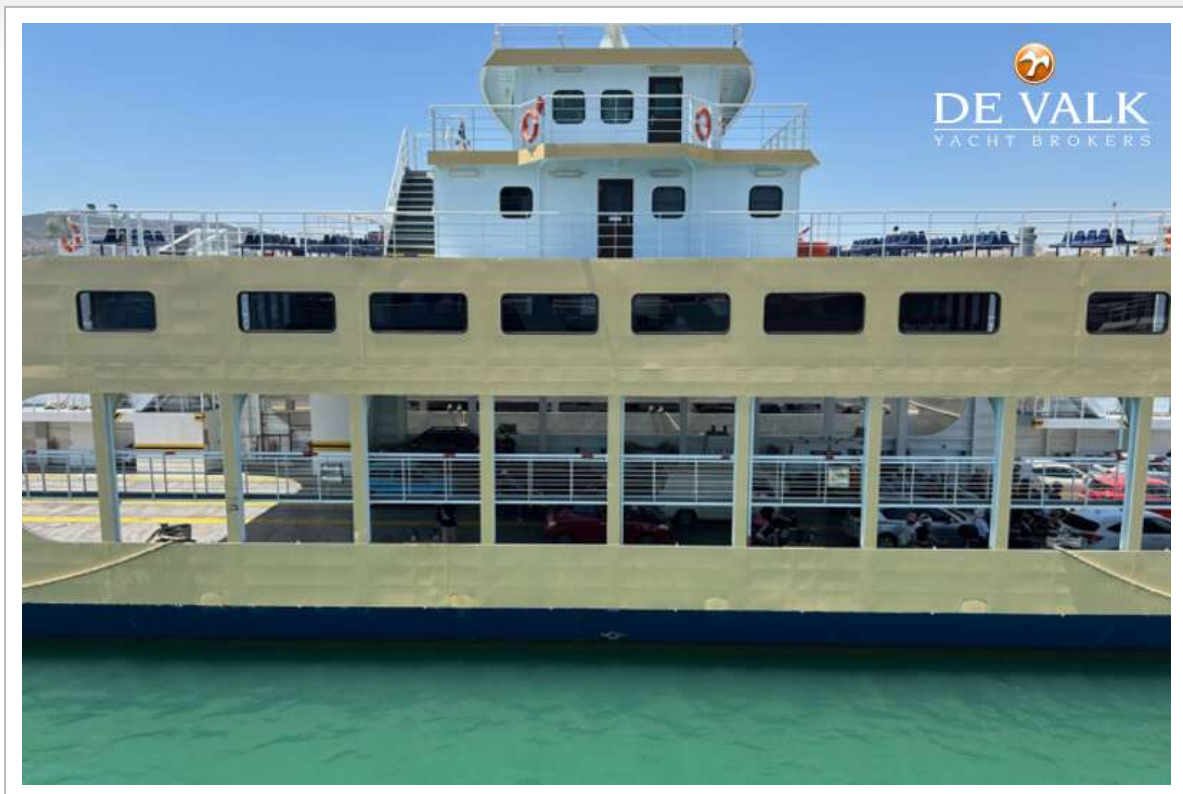
RO/PAX DOUBLE ENDED FERRY 78 M



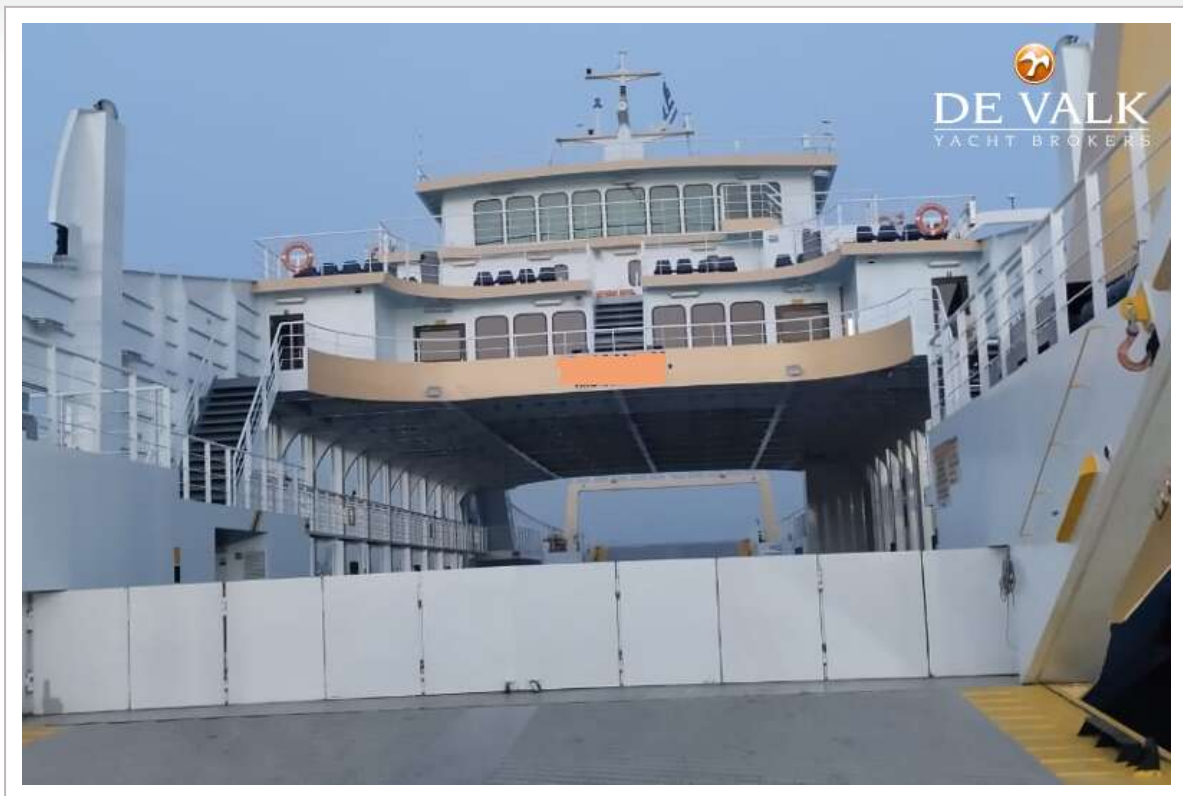
RO/PAX DOUBLE ENDED FERRY 78 M



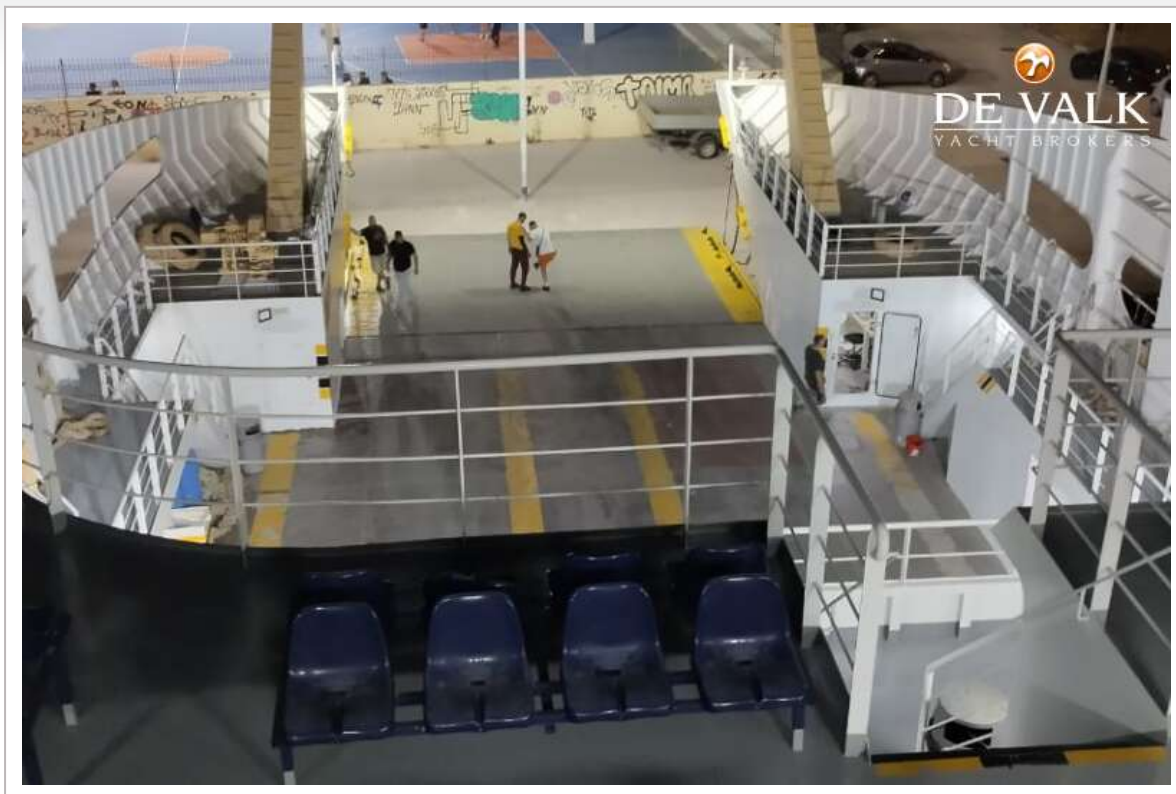
RO/PAX DOUBLE ENDED FERRY 78 M



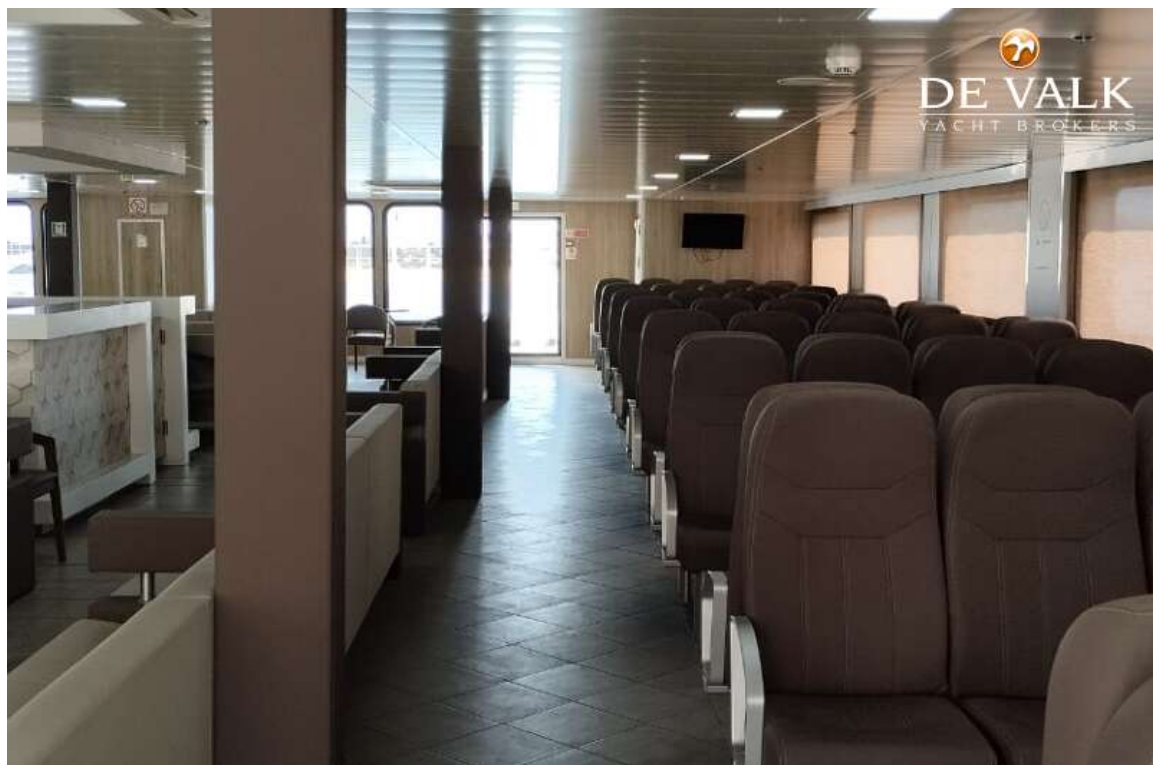
RO/PAX DOUBLE ENDED FERRY 78 M



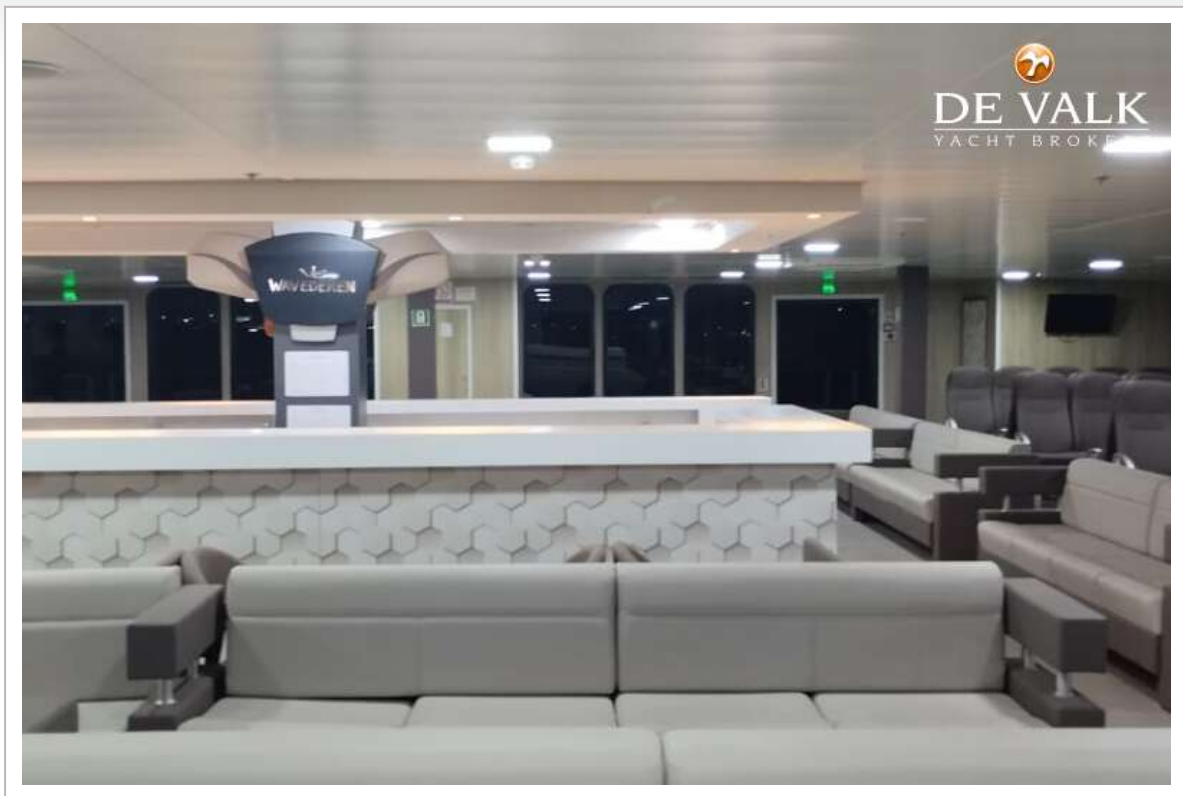
RO/PAX DOUBLE ENDED FERRY 78 M



RO/PAX DOUBLE ENDED FERRY 78 M



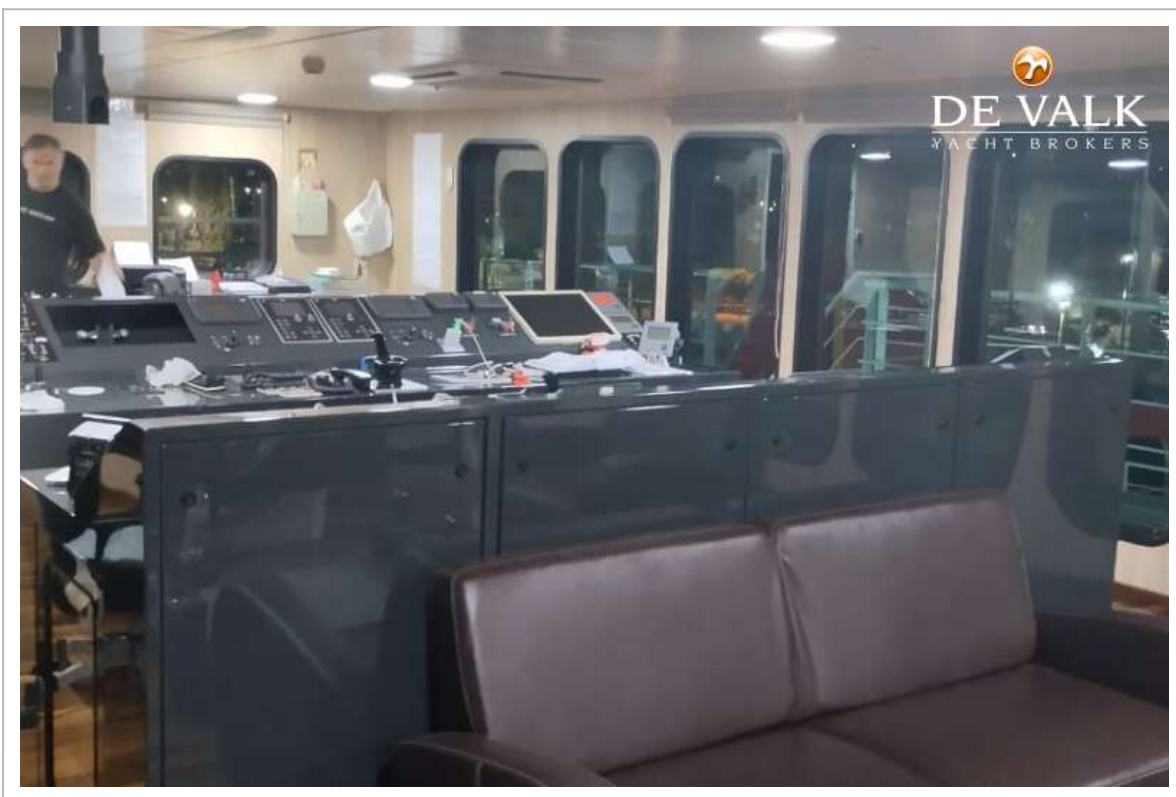
RO/PAX DOUBLE ENDED FERRY 78 M



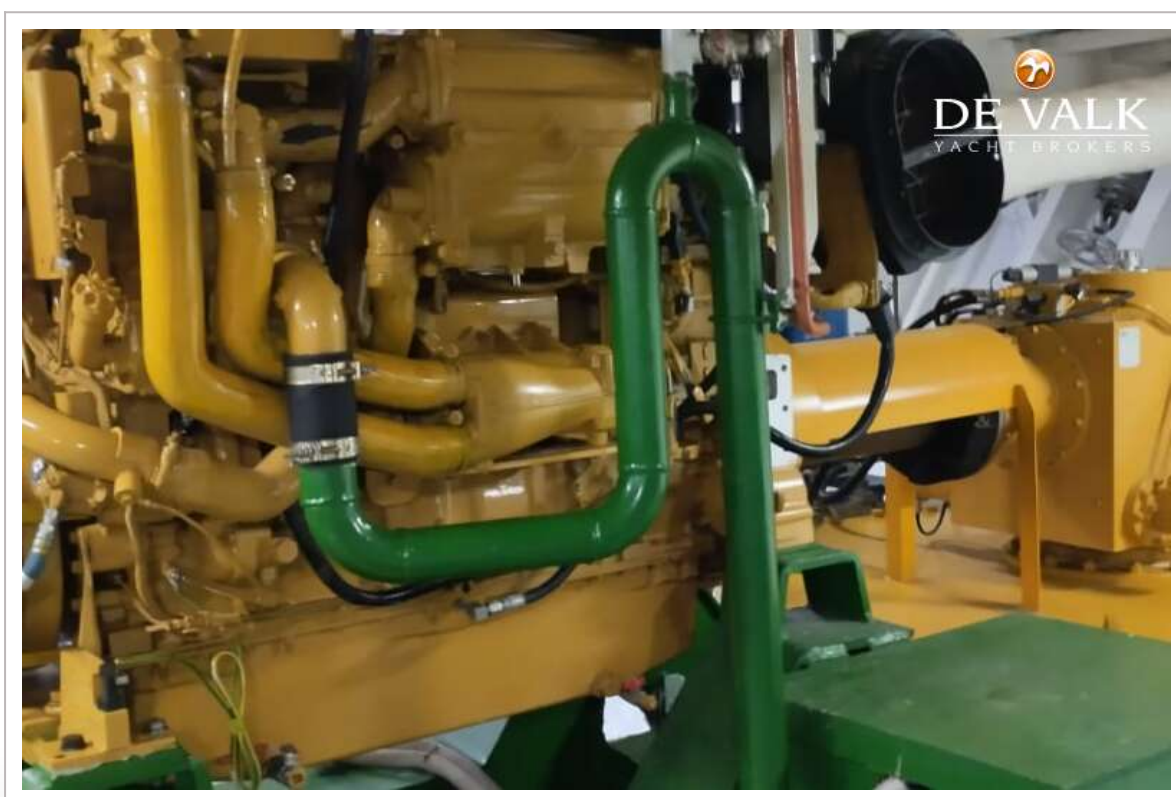
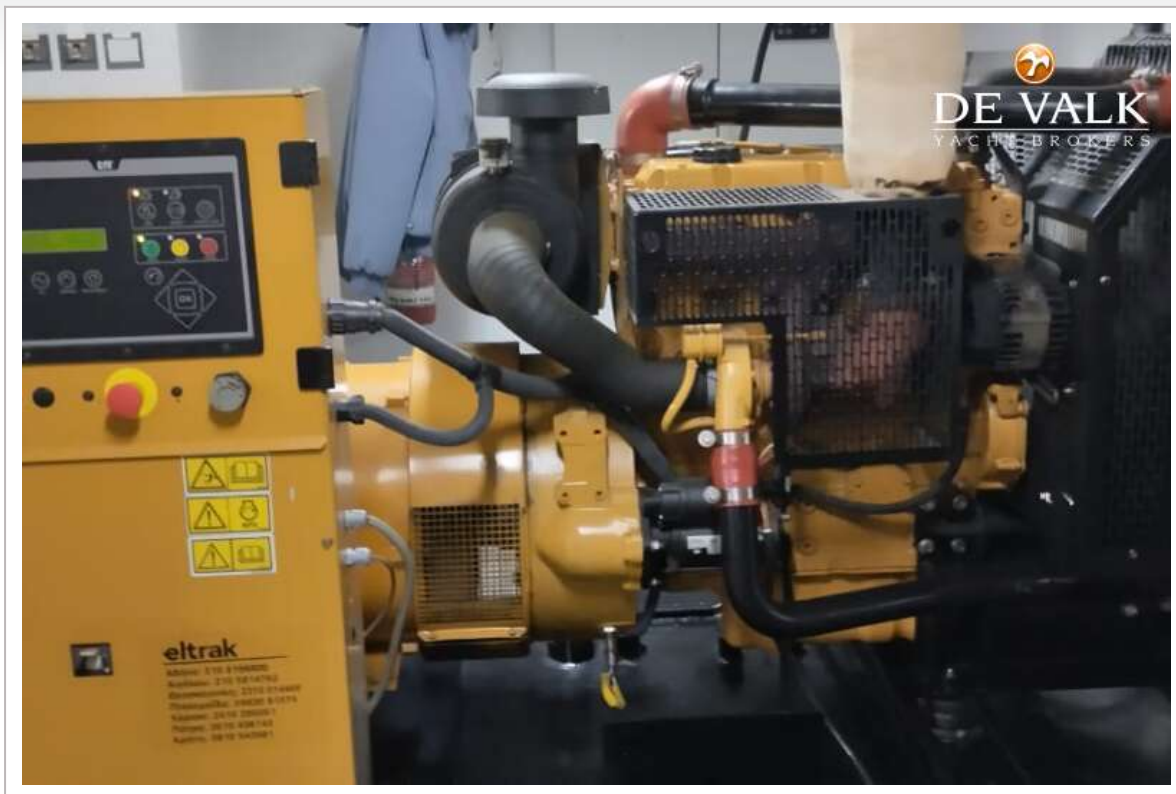
RO/PAX DOUBLE ENDED FERRY 78 M



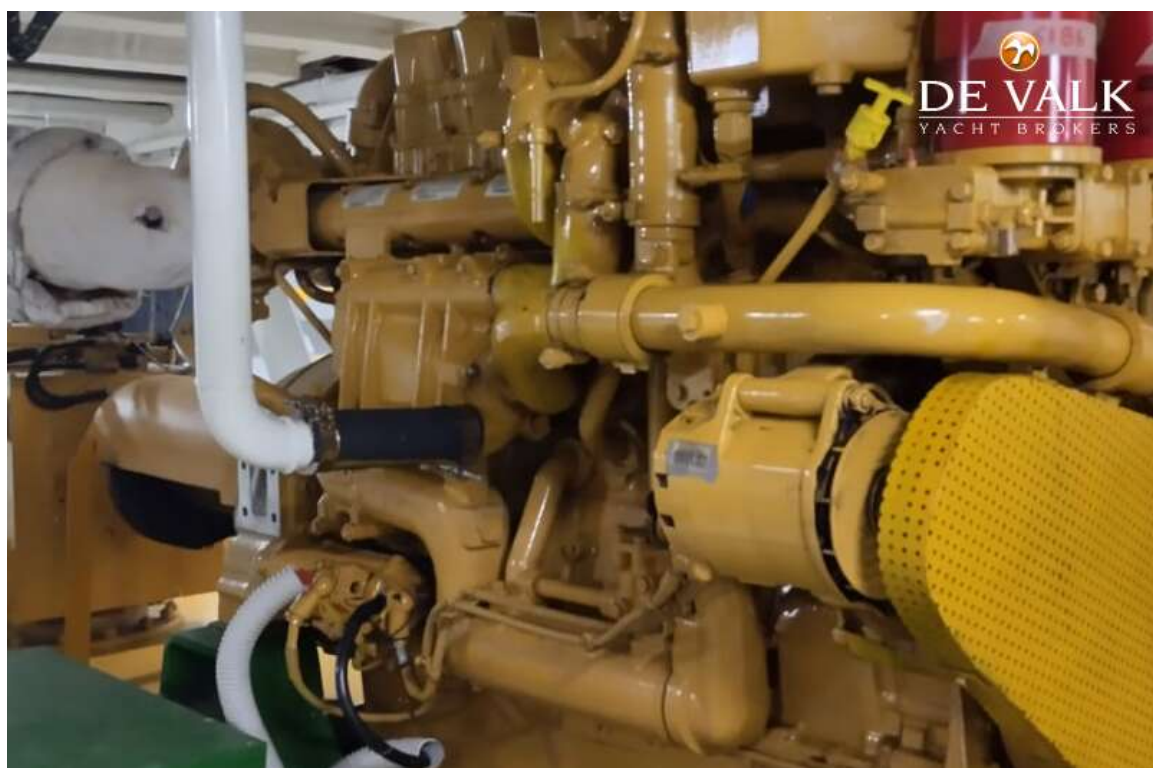
RO/PAX DOUBLE ENDED FERRY 78 M



RO/PAX DOUBLE ENDED FERRY 78 M



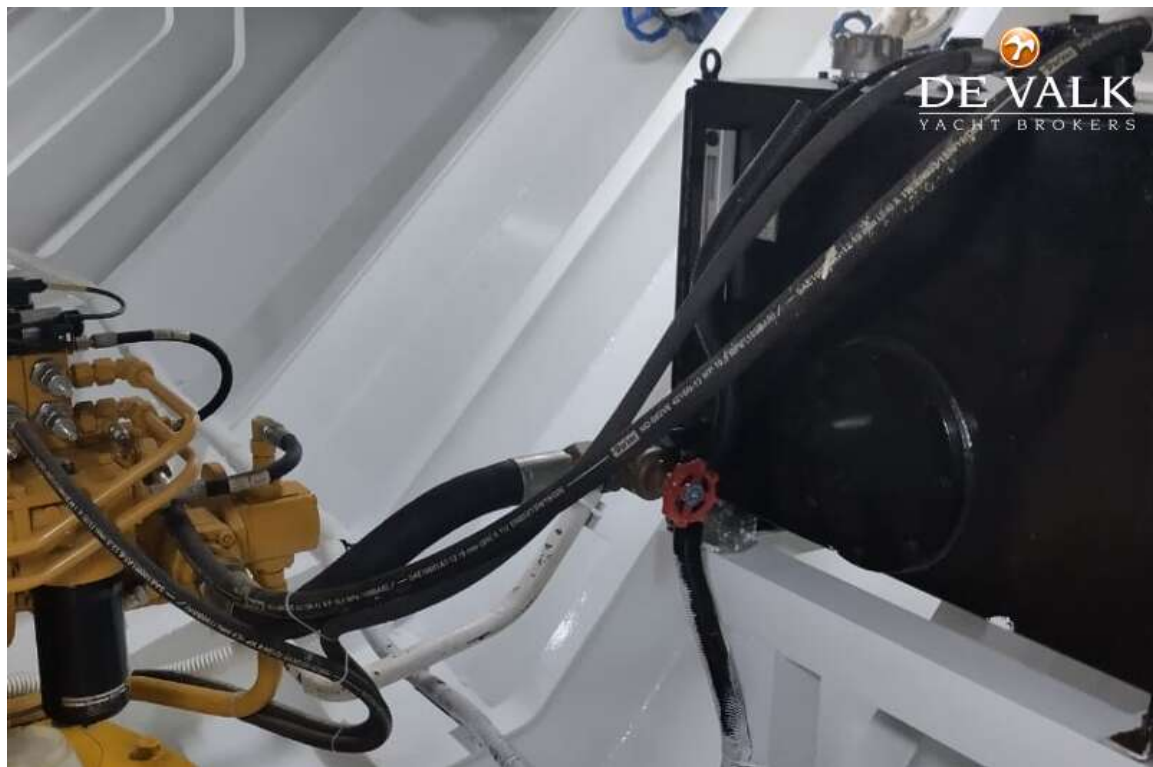
RO/PAX DOUBLE ENDED FERRY 78 M



RO/PAX DOUBLE ENDED FERRY 78 M



RO/PAX DOUBLE ENDED FERRY 78 M





[illegible]