



DE VALK
YACHT BROKERS



THIS YACHT WILL BE AUCTIONED

PADDLE WHEEL VESSEL ATLANTA



DE VALK
YACHT BROKERS

PADDLE WHEEL VESSEL ATLANTA

BROKER'S COMMENTS

The "Atlanta" will be auctioned online at Bright Auctions. Bids can only be placed online at Bright Auctions. All information about the auction is available on the website <http://bit.ly/43oGp2X> The saloon boat / motor yacht "Atlanta" is in exceptionally well-maintained condition, featuring a high-quality interior finish and a solid steel construction. The use of solid teak, brass, copper, and stainless steel gives the vessel a timeless, and classic appearance. All corners and joints have been carefully rounded; the brass deck hatches and portholes highlight the vessel's craftsmanship.

Mark Hesselmans

SPECIFICATIONS

Dimensions	10.00 x 4.40 x 1.00 (m)	Builder	Volharding
Built	1992	Cabins	
Material	Steel	Berths	2
Engine(s)	1 x Iveco 8061 m12 diesel	Hp/Kw	88.00 (hp), 64.77 (kw)
Asking price	sold (VAT)	Lying	at sales office

CONTACT

Sales office	De Valk Loosdrecht B.V.	Telephone	+31 (0)35 582 90 30
Address	't Breukeleveense Meentje 6 1231LM Loosdrecht / Wijdmeren NL	E-mail	loosdrecht@devalk.nl

DISCLAIMER

These particulars are given in good faith as supplied but cannot be guaranteed.



PADDLE WHEEL VESSEL ATLANTA

GENERAL

Model	PADDLE WHEEL VESSEL ATLANTA
Type	motor yacht
LOA (m)	10,00
Beam (m)	4,40
Draft (m)	1,00
Headroom (m)	1,90
Year built	1992
Builder	Volharding
Country	The Netherlands
Displacement (t)	10
Hull material	steel
Hull colour	off-white
Hull shape	multi hard chine
Superstructure material	wood
Deck plate thickness (mm)	30
Rubbing strake	stainless steel
Deck material	steel
Deck finish	teak
Superstructure deck finish	paint
Cockpit deck finish	teak
Dorades	yes
Window frame	wood
Window material	tempered glass
Deckhatch	yes
Portholes	copper 3x each side
Fuel tank (litre)	steel +/- 200
Fuel tank 2 (litre)	steel +/- 200
Freshwater tank (litre)	stainless steel +/- 250
Wheel steering	hydraulic
Inside helm position	yes



PADDLE WHEEL VESSEL ATLANTA

More info on paintwork	Epoxy primer with two-component yacht paint
Extra info	Hydraulic tank +/- 100 L
Extra info	Fully sandblasted, steel plating thickness up to approx. 10 mm

ACCOMMODATION

Berths	2
Interior	mahogany Teak and
Floor	teak
Aft deck	Teak
Pilot house/deck saloon	yes
Dinette to convert into berth	1,90
Opening door to cockpit	yes
Galley	yes
Countertop	plastic
Sink	stainless steel
Cooker	methylated spirit Origo 4100 two pits
Fridge	With a freezer
Water pressure system	electrical
Toilet	shared
Toilet system	electric
Wash basin	at the toilet
Extra info	All corners rounded; fitted with flush deck hatches and portholes (brass ship windows), harmoniously integrated into the classic saloon interior

MACHINERY

No of engines	1
Make	Iveco
Type	8061 m12
HP	88
kW	64.77



PADDLE WHEEL VESSEL ATLANTA

Fuel	diesel
Maximum speed (kn)	8
Engine hours	80
Engine cooling system	freshwater heat exchanger
Engine controls	bowden cable
Gearbox	hydraulic Infinitely adjustable
Exhaust	watercooled
Electric bilge pump	yes
Electrical installation	12V/230V
Start battery	Bosch 140Ah 12V
Service battery	2x Bosch 180Ah 12V
Insulation transformer	Victron

NAVIGATION

Multi control display	yes
Log	Sumlog SL VDO
Navigation lights	yes

EQUIPMENT

Fixed windscreen	teak/brass frame
Boarding ladder	wood
Sea railing	Copper
Grab rail (superstructure)	Copper
Horn	electric



PADDLE WHEEL VESSEL ATLANTA



BROKERAGE | CHARTER | BERTHS | FINANCE | INSURANCE | YACHT MANAGEMENT


DE VALK
YACHT BROKERS



**This yacht will be auctioned,
for further details please visit www.devalk.nl**

**Dit schip zal worden geveild,
voor meer informatie gaat u naar www.devalk.nl**

**Dieses Schiff wird versteigert,
für weitere informationen besuchen Sie www.devalk.nl**

WWW.DEVALK.NL


DE VALK
YACHT BROKERS



PADDLE WHEEL VESSEL ATLANTA



PADDLE WHEEL VESSEL ATLANTA



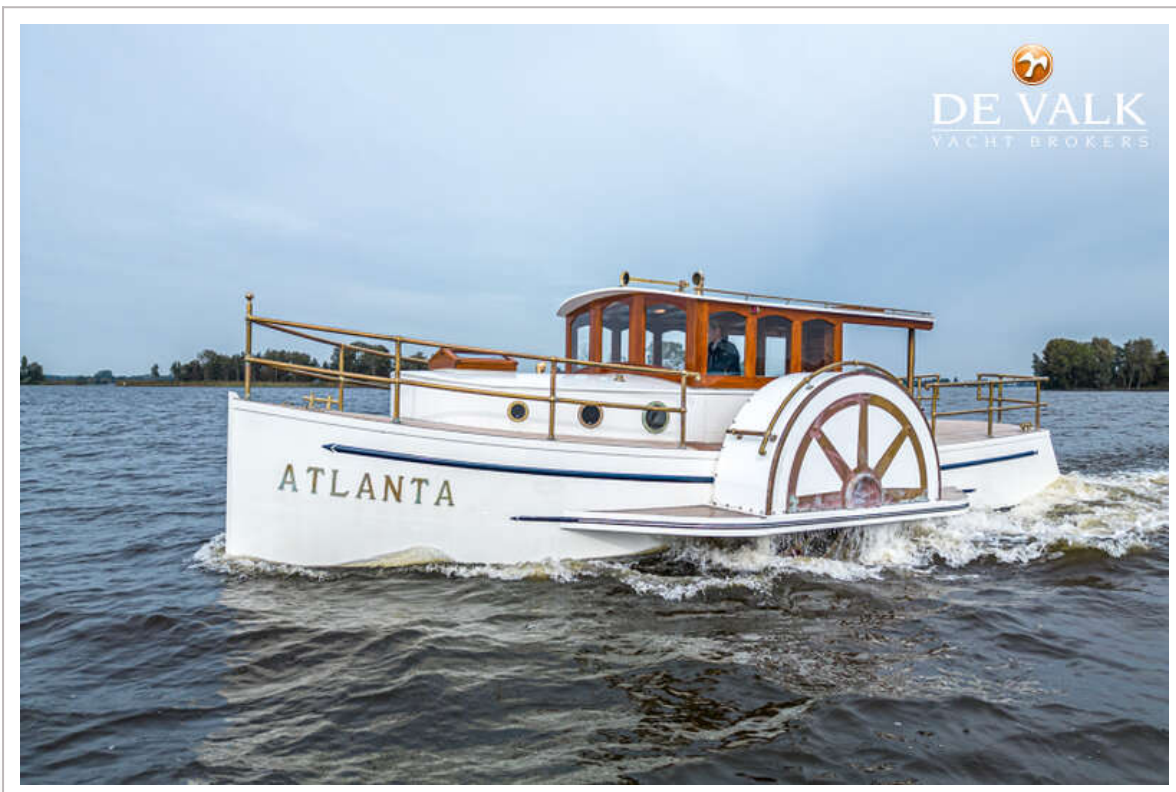
PADDLE WHEEL VESSEL ATLANTA



PADDLE WHEEL VESSEL ATLANTA



PADDLE WHEEL VESSEL ATLANTA



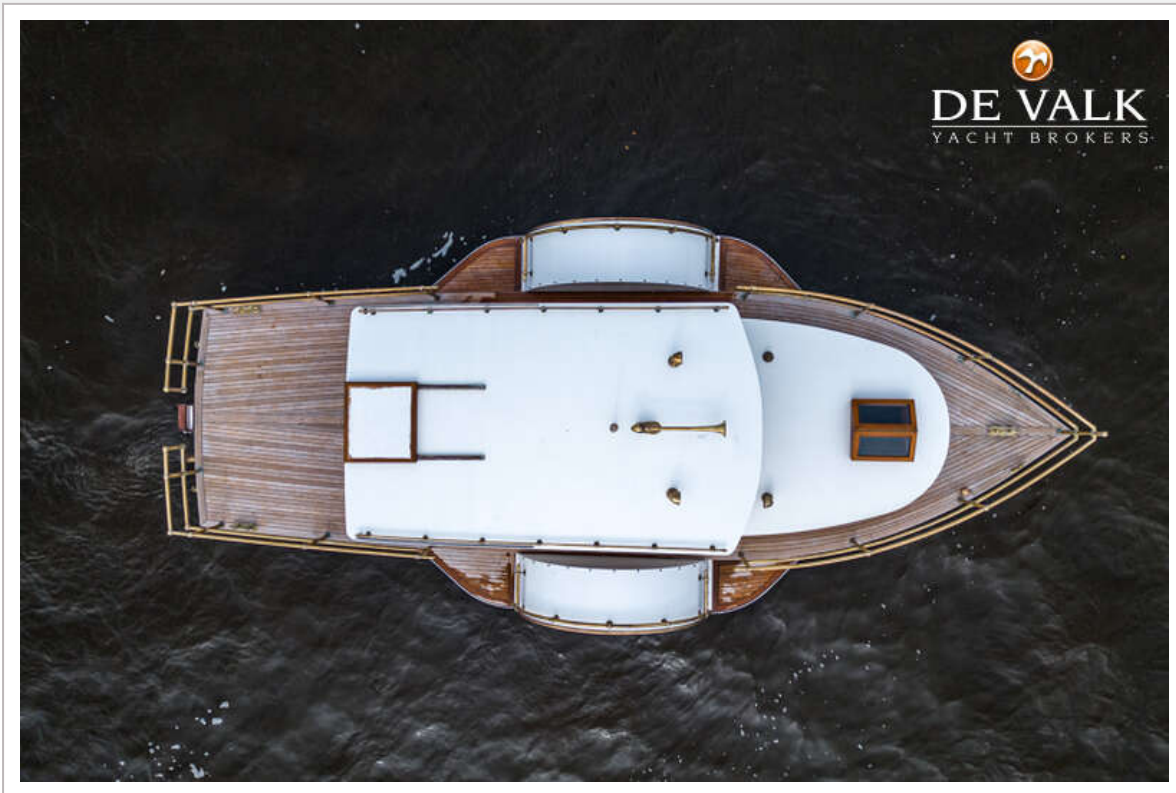
PADDLE WHEEL VESSEL ATLANTA



PADDLE WHEEL VESSEL ATLANTA



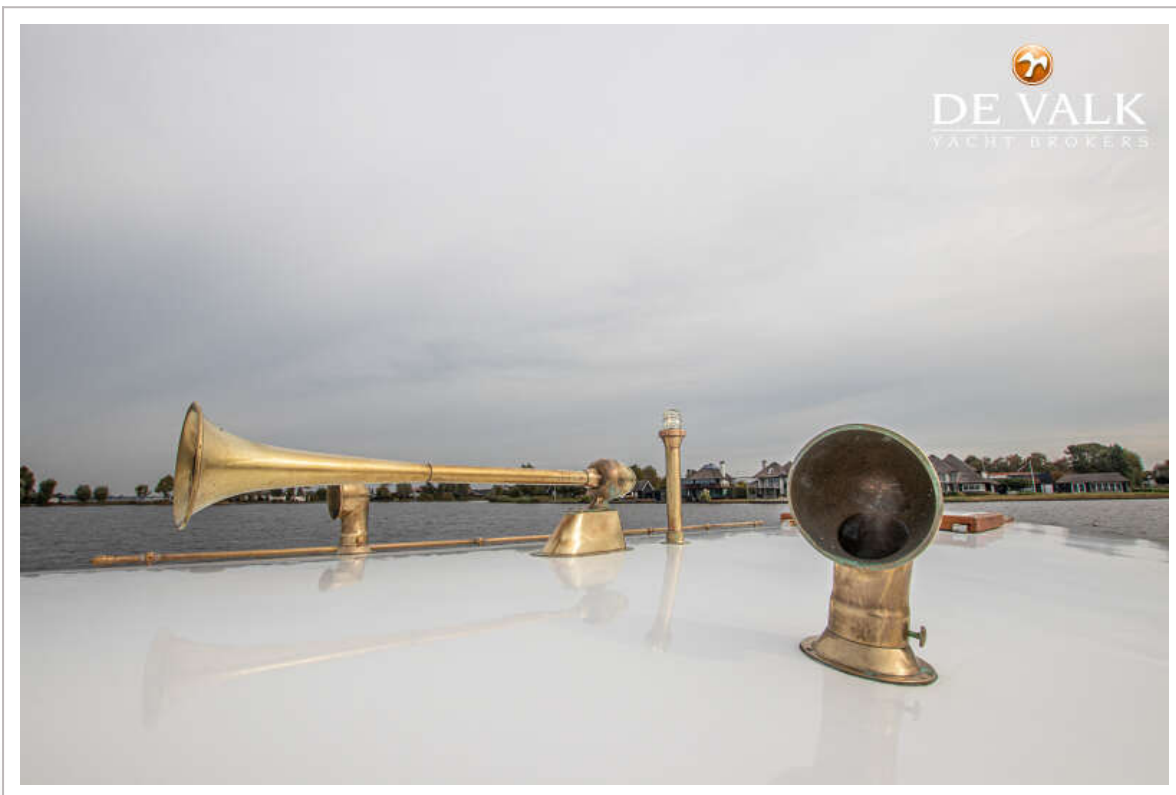
PADDLE WHEEL VESSEL ATLANTA



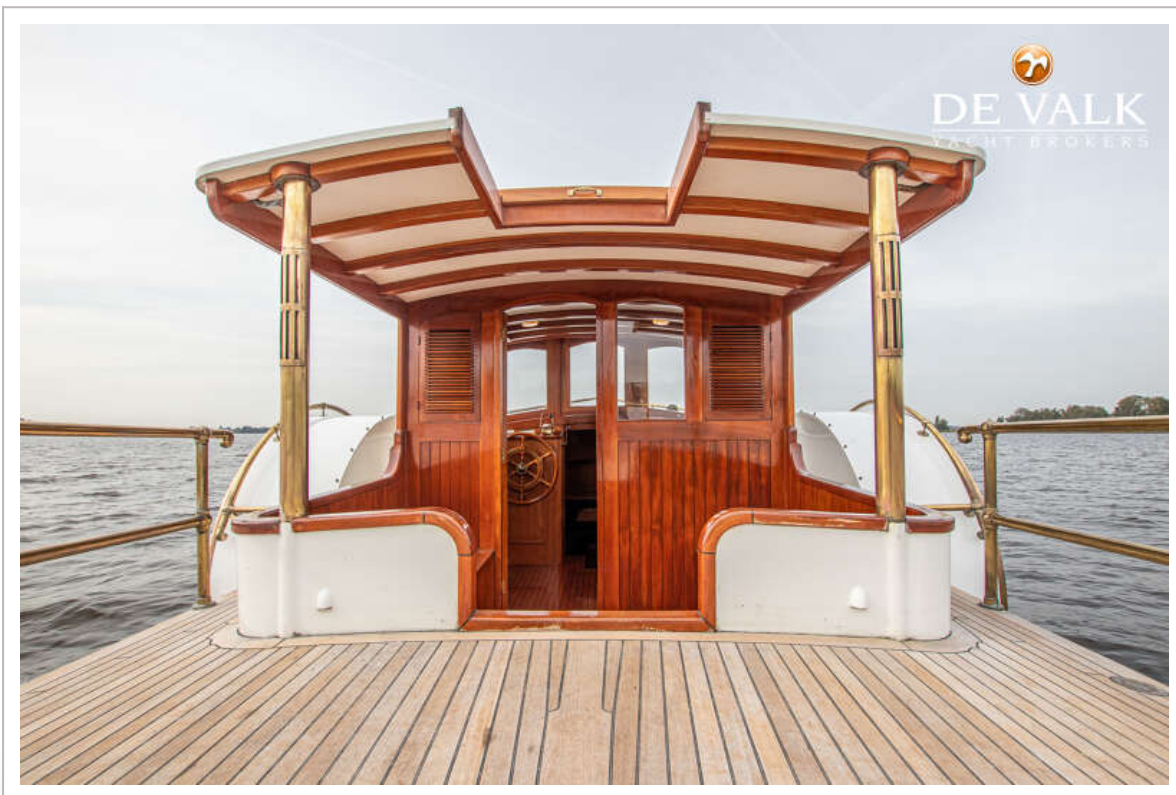
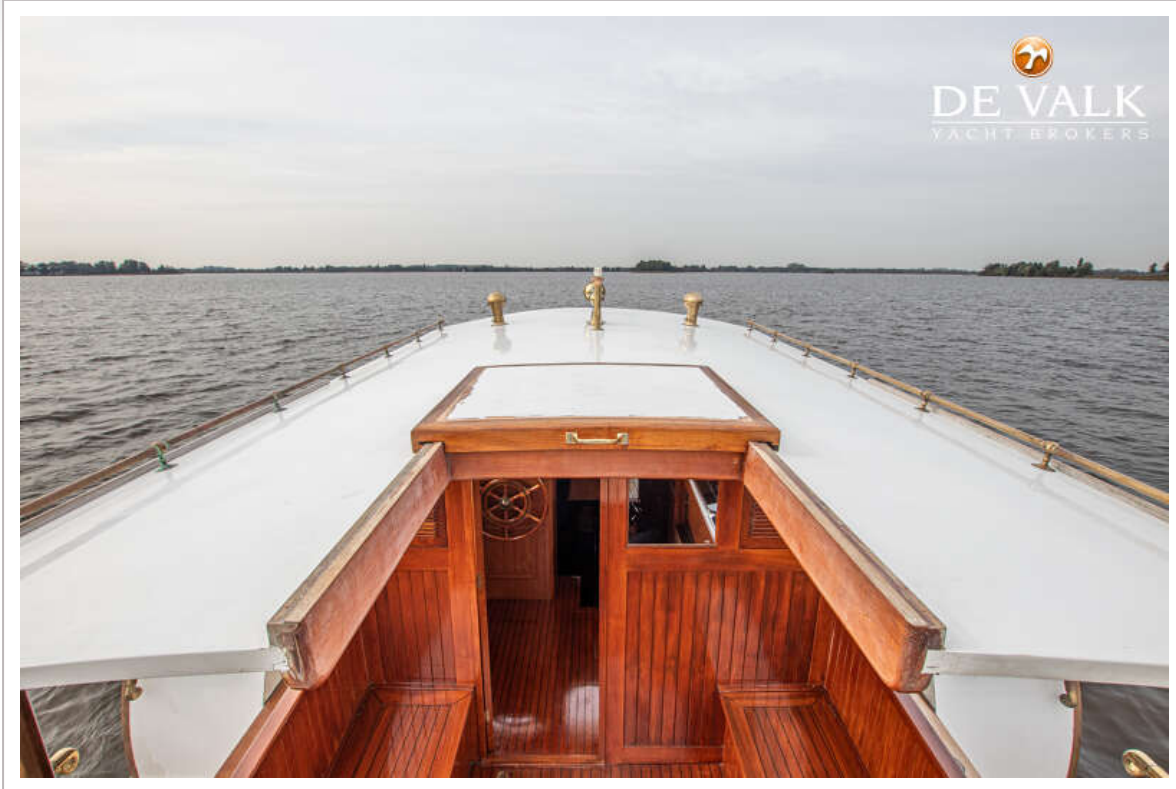
PADDLE WHEEL VESSEL ATLANTA



PADDLE WHEEL VESSEL ATLANTA



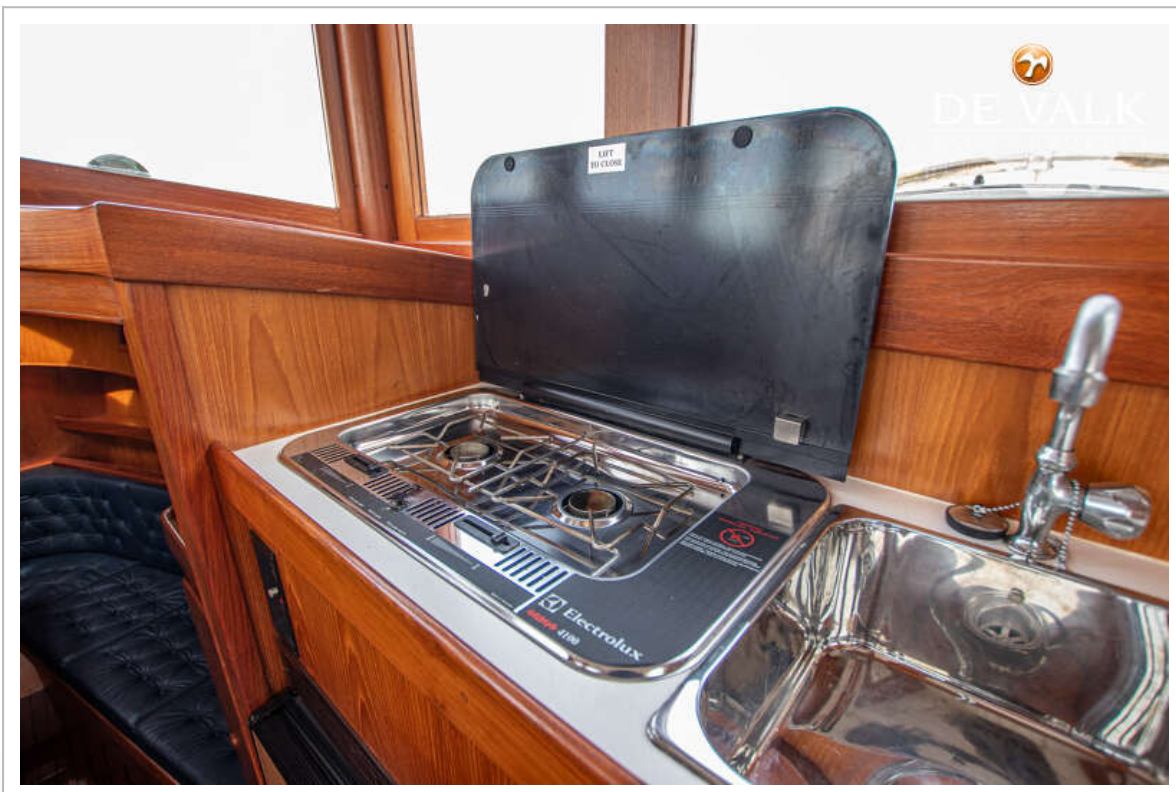
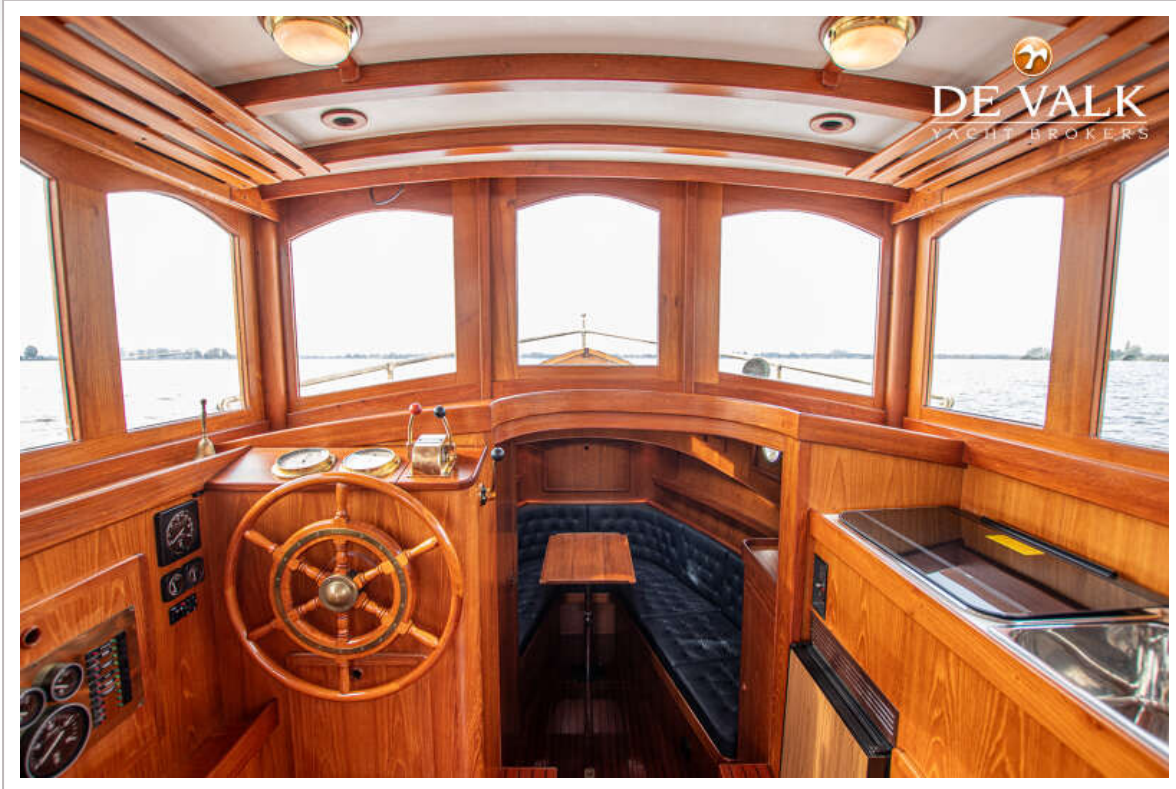
PADDLE WHEEL VESSEL ATLANTA



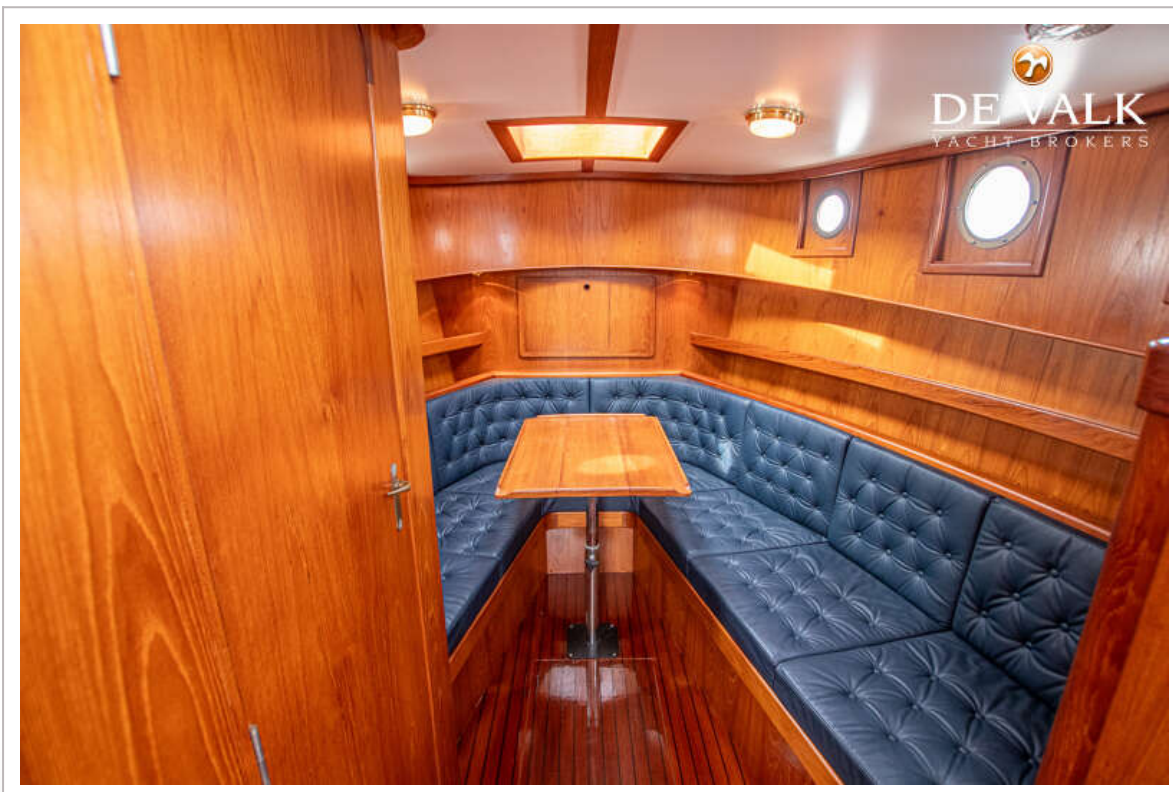
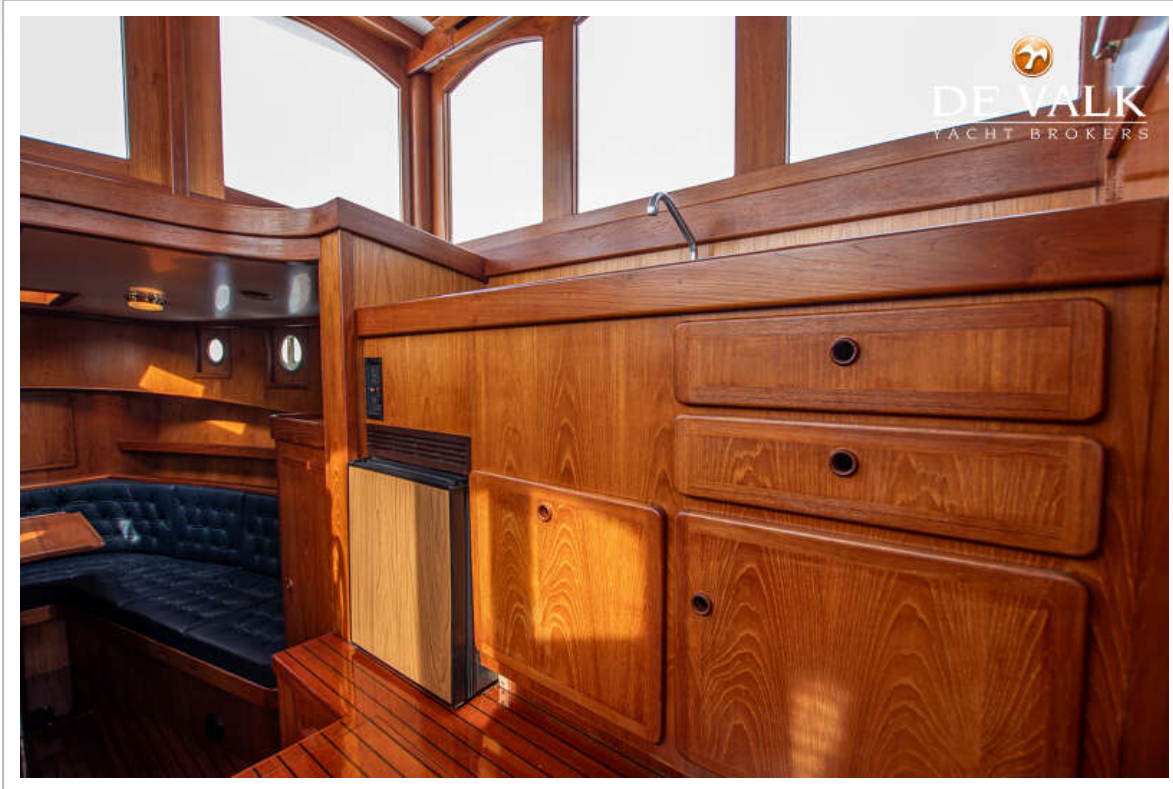
PADDLE WHEEL VESSEL ATLANTA



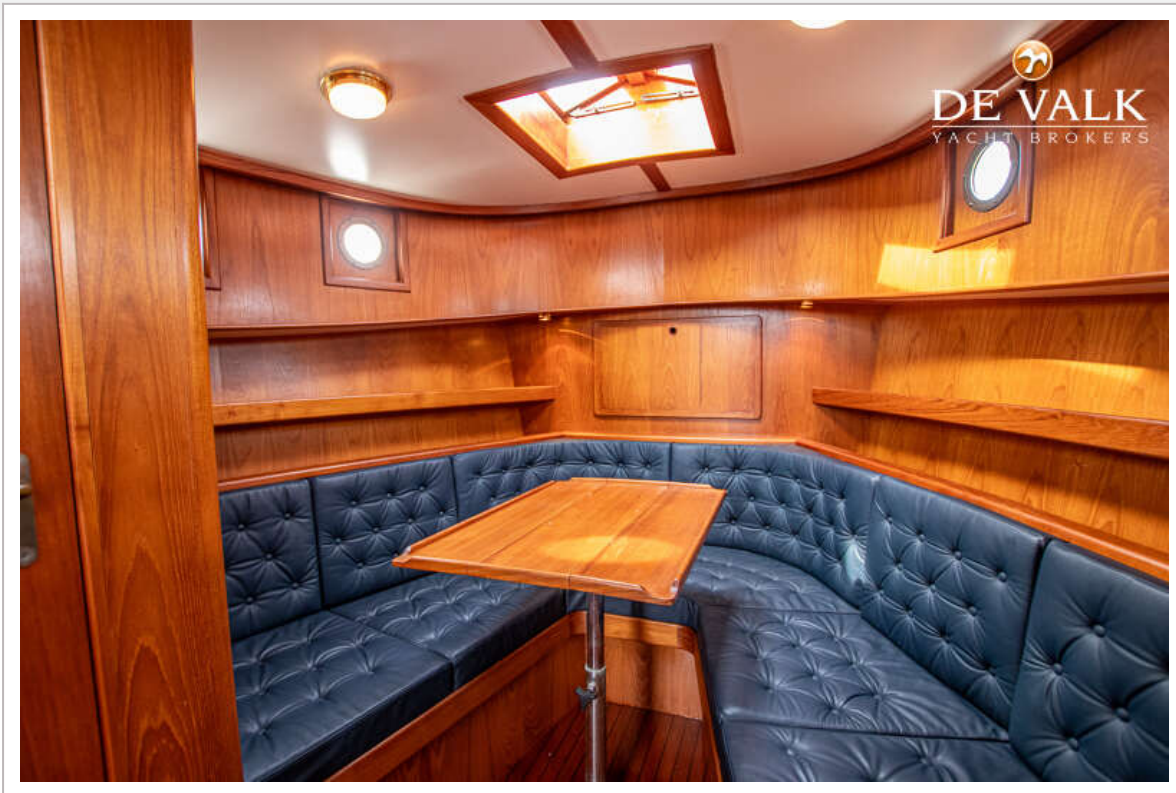
PADDLE WHEEL VESSEL ATLANTA



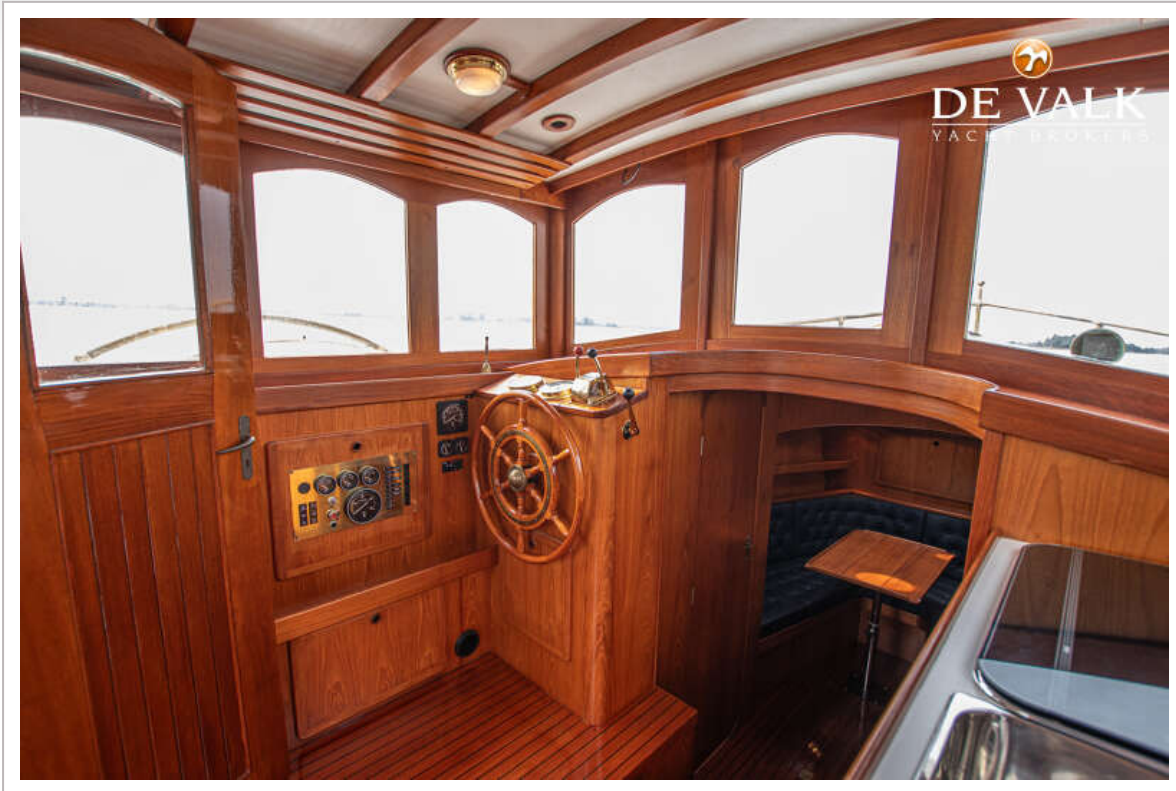
PADDLE WHEEL VESSEL ATLANTA



PADDLE WHEEL VESSEL ATLANTA



PADDLE WHEEL VESSEL ATLANTA



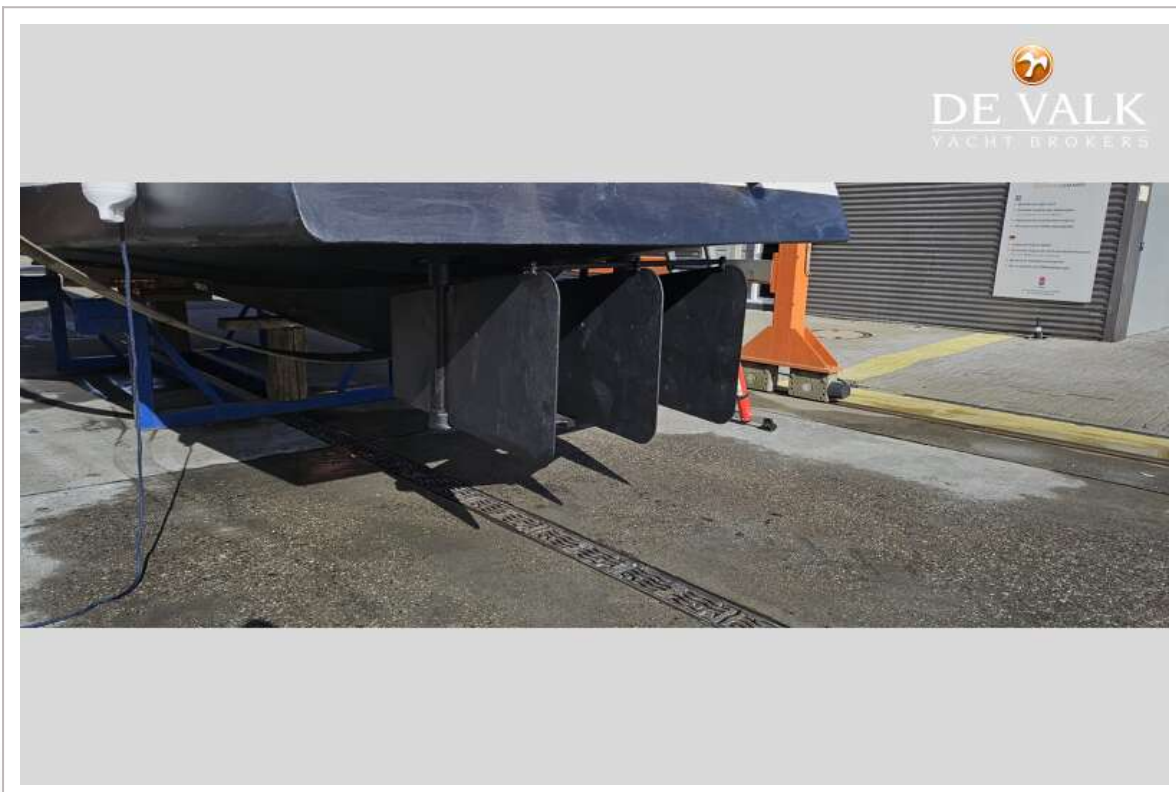
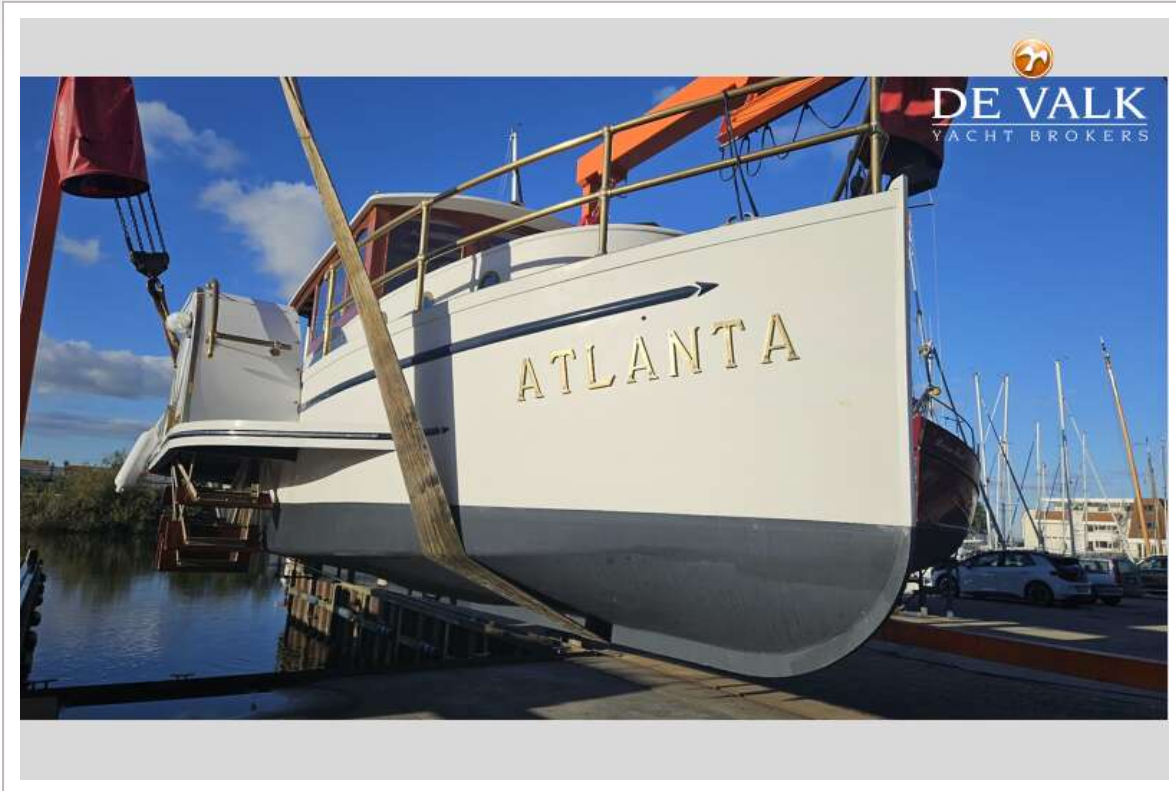
PADDLE WHEEL VESSEL ATLANTA



PADDLE WHEEL VESSEL ATLANTA



PADDLE WHEEL VESSEL ATLANTA



PADDLE WHEEL VESSEL ATLANTA



PADDLE WHEEL VESSEL ATLANTA

