



DE VALK  
YACHT BROKERS



## RADARBOOT ATLANTA



DE VALK  
YACHT BROKERS

## BROKER'S COMMENTS

The saloon boat / motor yacht "Atlanta" is in exceptionally well-maintained condition, featuring a high-quality interior finish and a solid steel construction. The use of noble materials such as solid teak, brass, copper, and stainless steel gives the vessel a timeless, representative, and classic appearance. All corners and joints have been carefully rounded; the brass deck hatches and portholes (brass ship windows) highlight the vessel's craftsmanship. A yacht built to be seen – classic in lines, elegant in finish, and with the presence of an exclusive saloon yacht.

*Mark Hesselmans*

## SPECIFICATIONS

<b>Dimensions</b>	10.00 x 4.40 x 1.00 (m)	<b>Builder</b>	Volharding
<b>Built</b>	1998	<b>Cabins</b>	
<b>Material</b>	Steel	<b>Berths</b>	2
<b>Engine(s)</b>	1 x Iveco 8061 m12 diesel	<b>Hp/Kw</b>	88.00 (hp), 64.77 (kw)
<b>Asking price</b>	€ 335.000 (VAT Paid)	<b>Lying</b>	at sales office

## CONTACT

<b>Sales office</b>	De Valk Loosdrecht B.V.	<b>Telephone</b>	+31 (0)35 582 90 30
<b>Address</b>	't Breukeleveense Meentje 6 1231LM Loosdrecht / Wijdmeren NL	<b>E-mail</b>	loosdrecht@devalk.nl

## DISCLAIMER

These particulars are given in good faith as supplied but cannot be guaranteed.



## GENERAL

Model	RADARBOOT ATLANTA
Type	motor yacht
LOA (m)	10,00
Beam (m)	4,40
Draft (m)	1,00
Headroom (m)	1,90
Year built	1998
Builder	Volharding
Country	The Netherlands
Displacement (t)	10
Hull material	steel
Hull colour	off-white
Hull shape	multi hard chine
Superstructure material	wood
Deck plate thickness (mm)	30
Rubbing strake	stainless steel
Deck material	steel
Deck finish	teak
Superstructure deck finish	paint
Cockpit deck finish	teak
Dorades	yes
Window frame	wood
Window material	tempered glass
Deckhatch	yes
Portholes	copper 3x each side
Fuel tank (litre)	steel +/- 200
Fuel tank 2 (litre)	steel +/- 200
Freshwater tank (litre)	stainless steel +/- 250
Wheel steering	hydraulic
Inside helm position	yes



## More info on paintwork

Epoxy primer with two-component yacht paint

## Extra info

Hydraulic tank +/- 100 L

## Extra info

Fully sandblasted, steel plating thickness up to approx. 10 mm

## ACCOMMODATION

### Berths

2

### Interior

mahogany Teak and

### Floor

teak

### Aft deck

Teak

### Pilot house/deck saloon

yes

### Dinette to convert into berth

1,90

### Opening door to cockpit

yes

### Galley

yes

### Countertop

plastic

### Sink

stainless steel

### Cooker

methyated spirit Origo 4100 two pits

### Fridge

With a freezer

### Water pressure system

electrical

### Toilet

shared

### Toilet system

electric

### Wash basin

at the toilet

## Extra info

All corners rounded; fitted with flush deck hatches and portholes (brass ship windows), harmoniously integrated into the classic saloon interior

## MACHINERY

### No of engines

1

### Make

Iveco

### Type

8061 m12

### HP

88

### kW

64.77



Fuel	diesel
Maximum speed (kn)	8
Engine hours	80
Engine cooling system	freshwater heat exchanger
Engine controls	bowden cable
Gearbox	hydraulic Infinitely adjustable
Exhaust	watercooled
Electric bilge pump	yes
Electrical installation	12V/230V
Start battery	Bosch 140Ah 12V
Service battery	2x Bosch 180Ah 12V
Insulation transformer	Victron

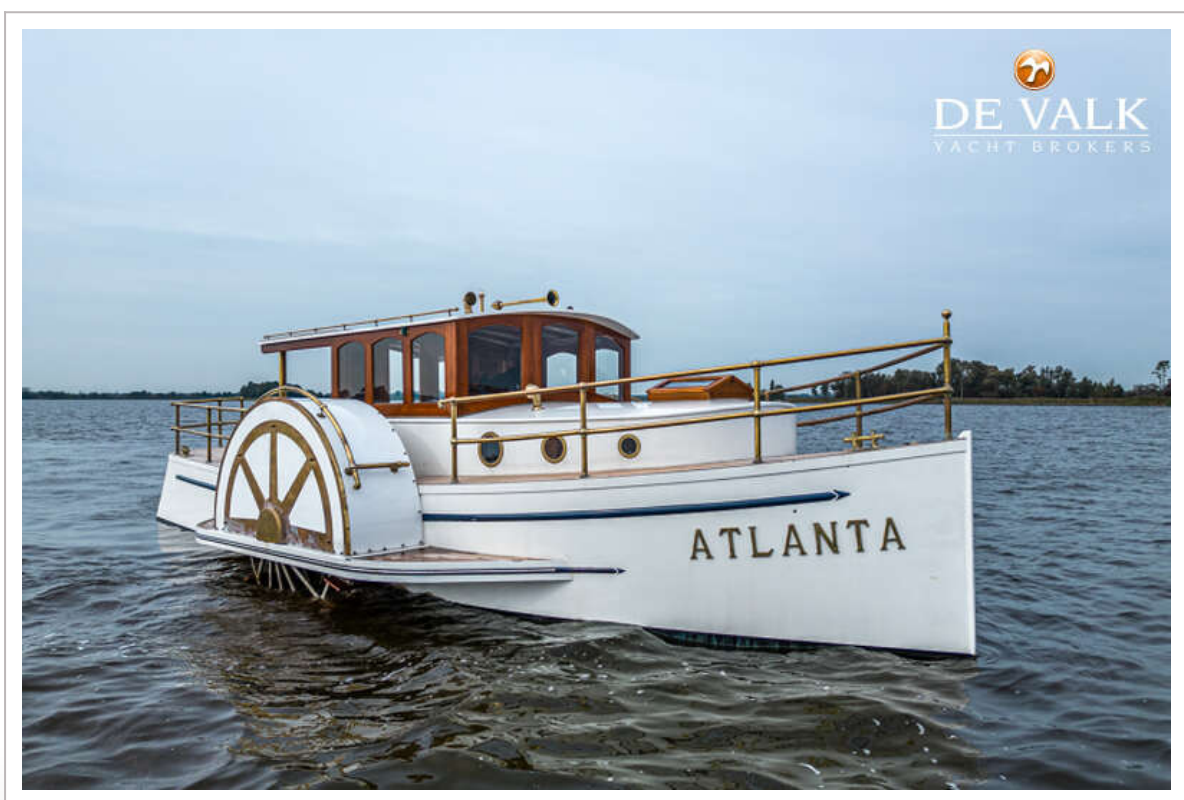
## NAVIGATION

Multi control display	yes
Log	Sumlog SL VDO
Navigation lights	yes

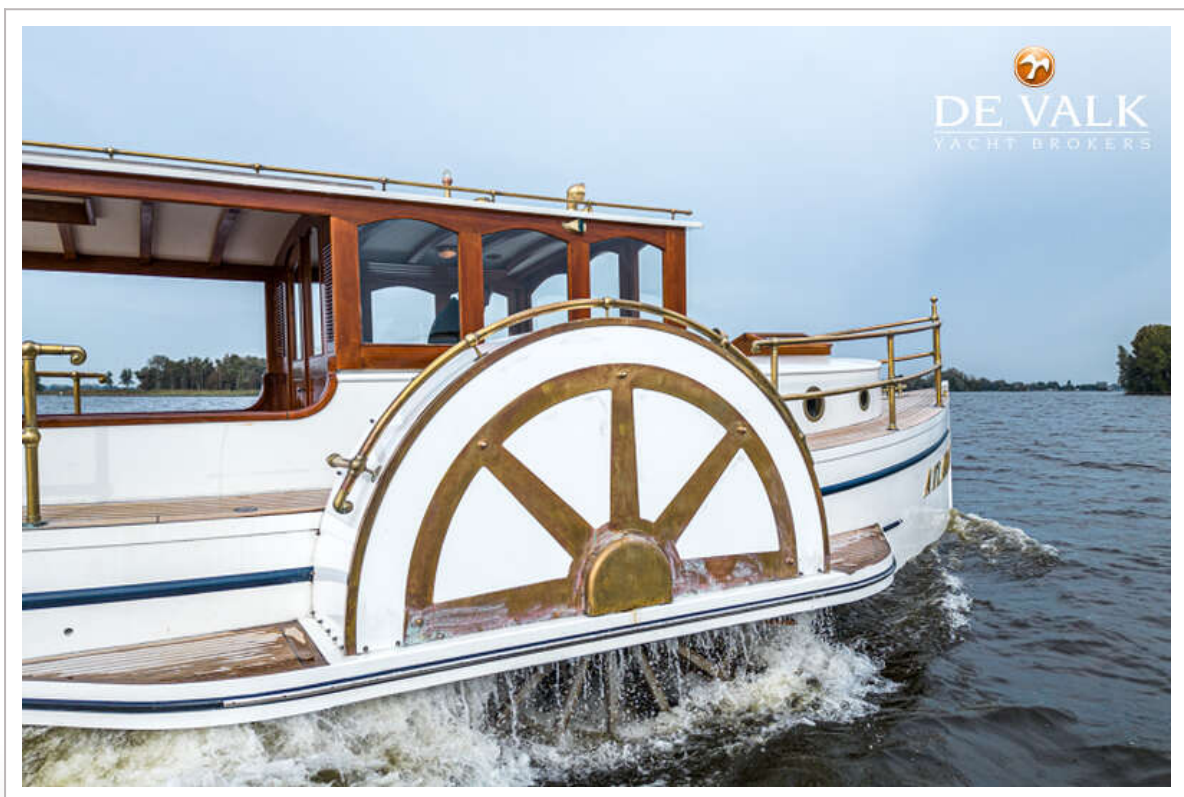
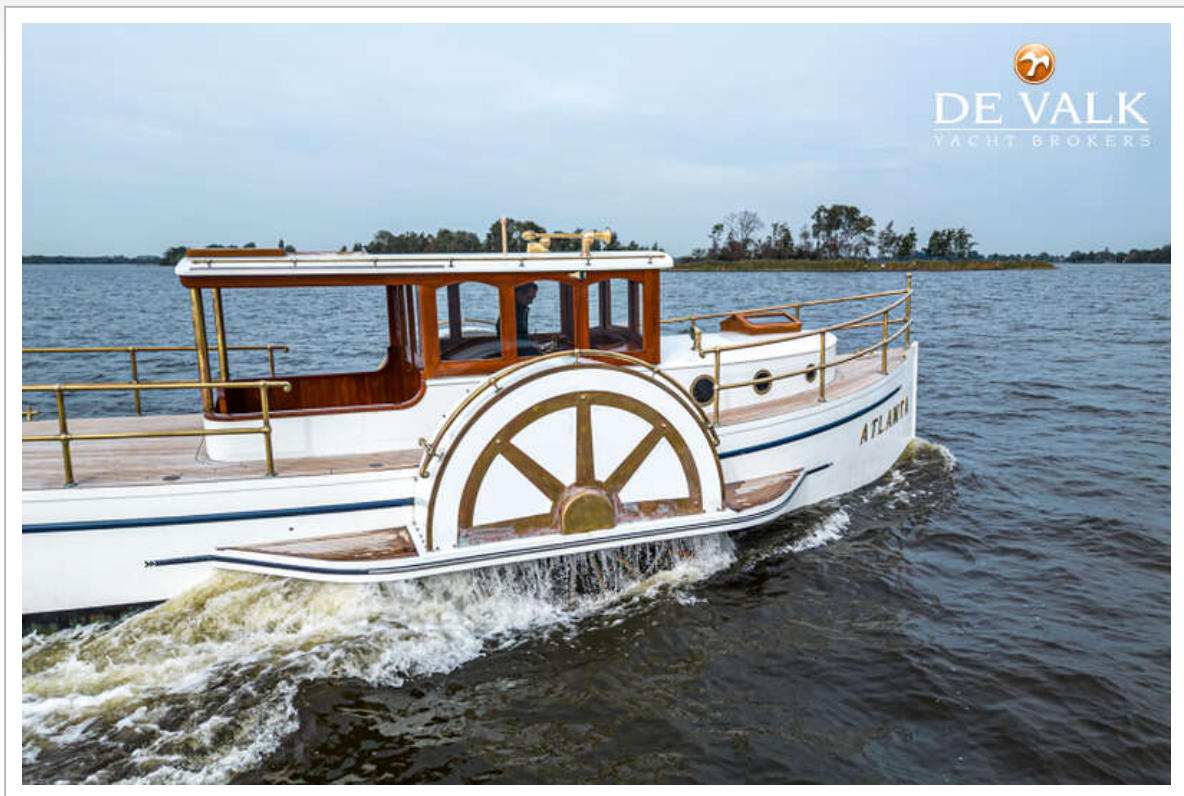
## EQUIPMENT

Fixed windscreen	teak/brass frame
Boarding ladder	wood
Sea railing	Copper
Grab rail (superstructure)	Copper
Horn	electric







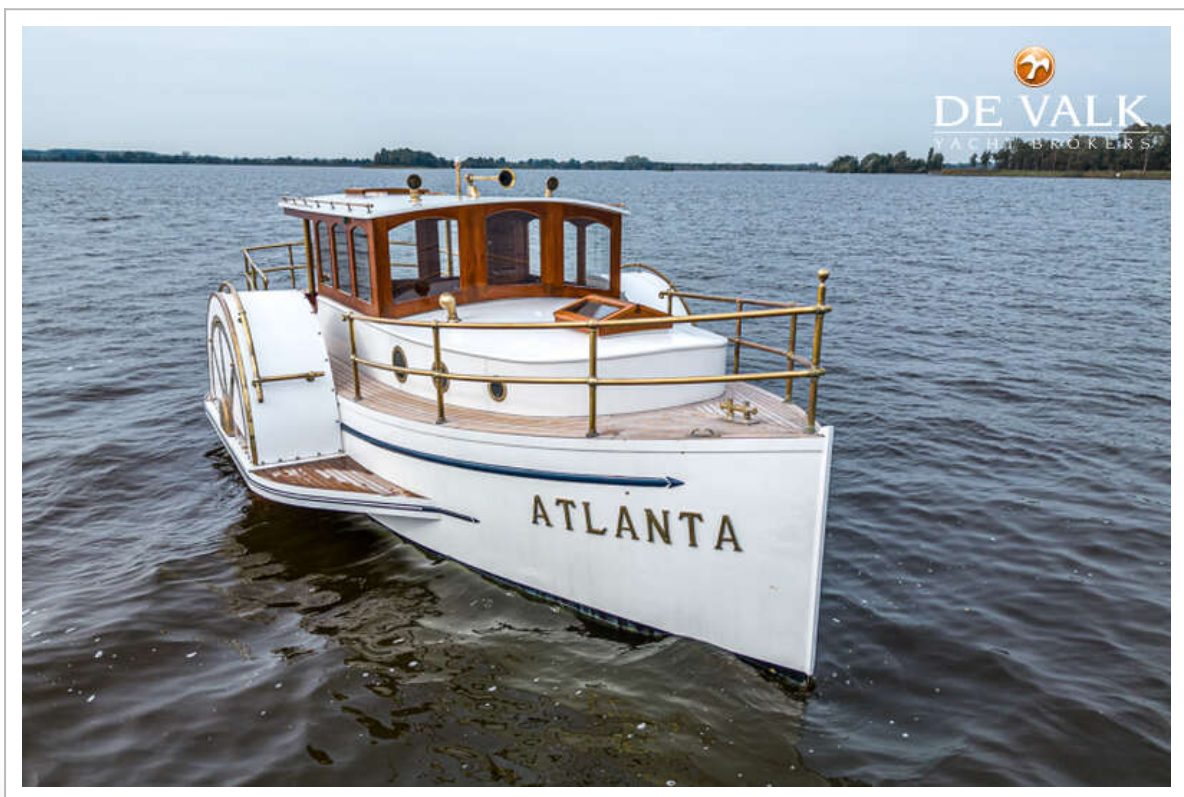


# RADARBOOT ATLANTA





# RADARBOOT ATLANTA



# RADARBOOT ATLANTA





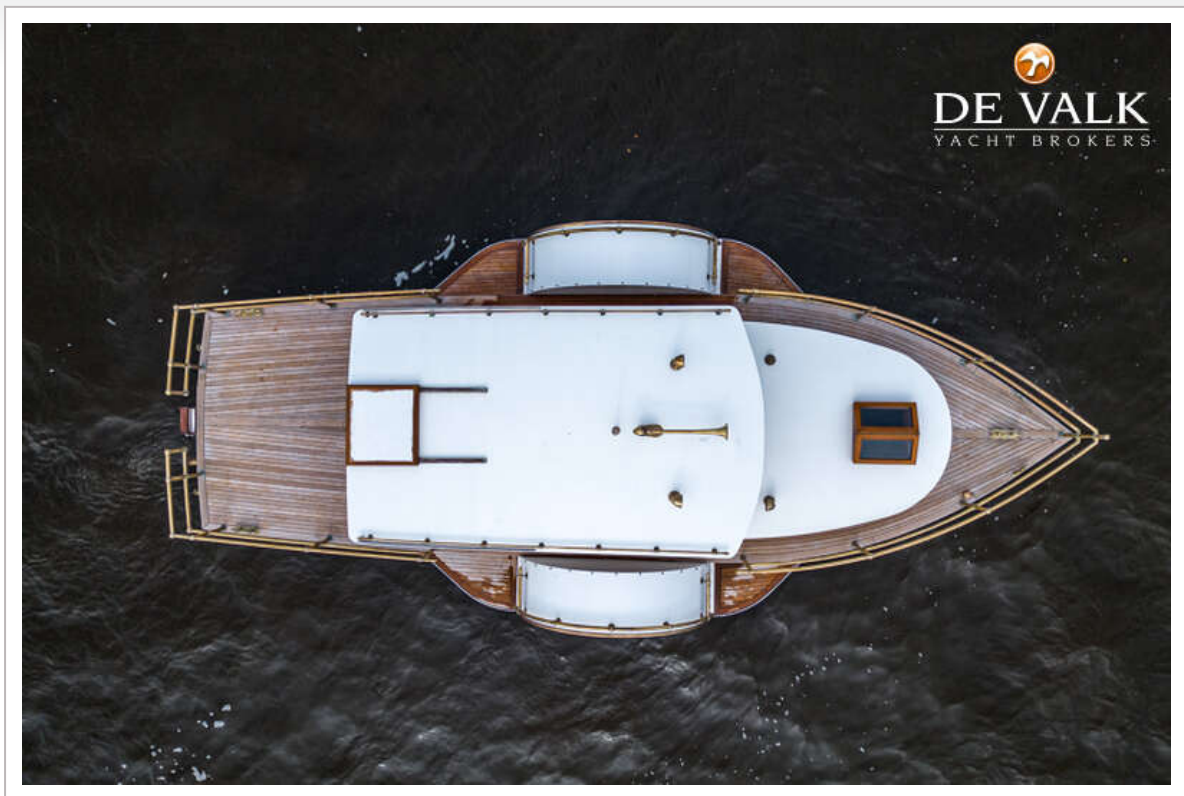






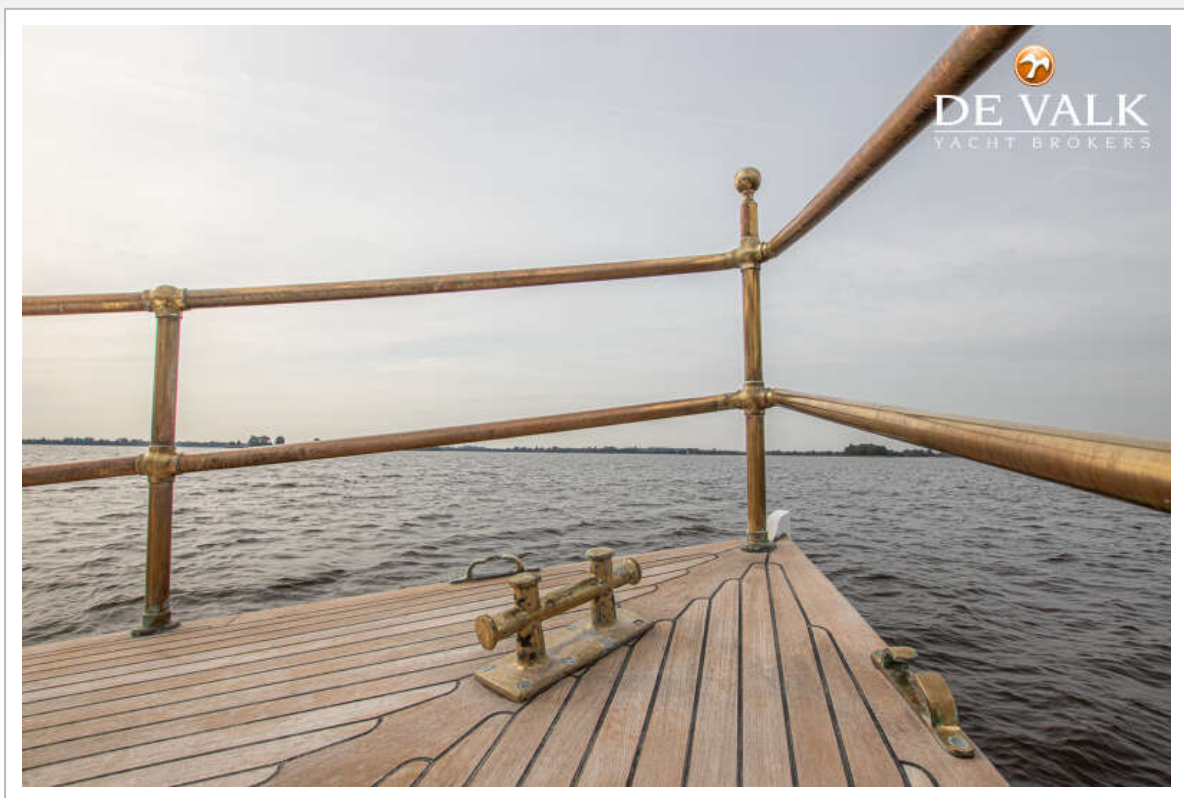
# RADARBOOT ATLANTA



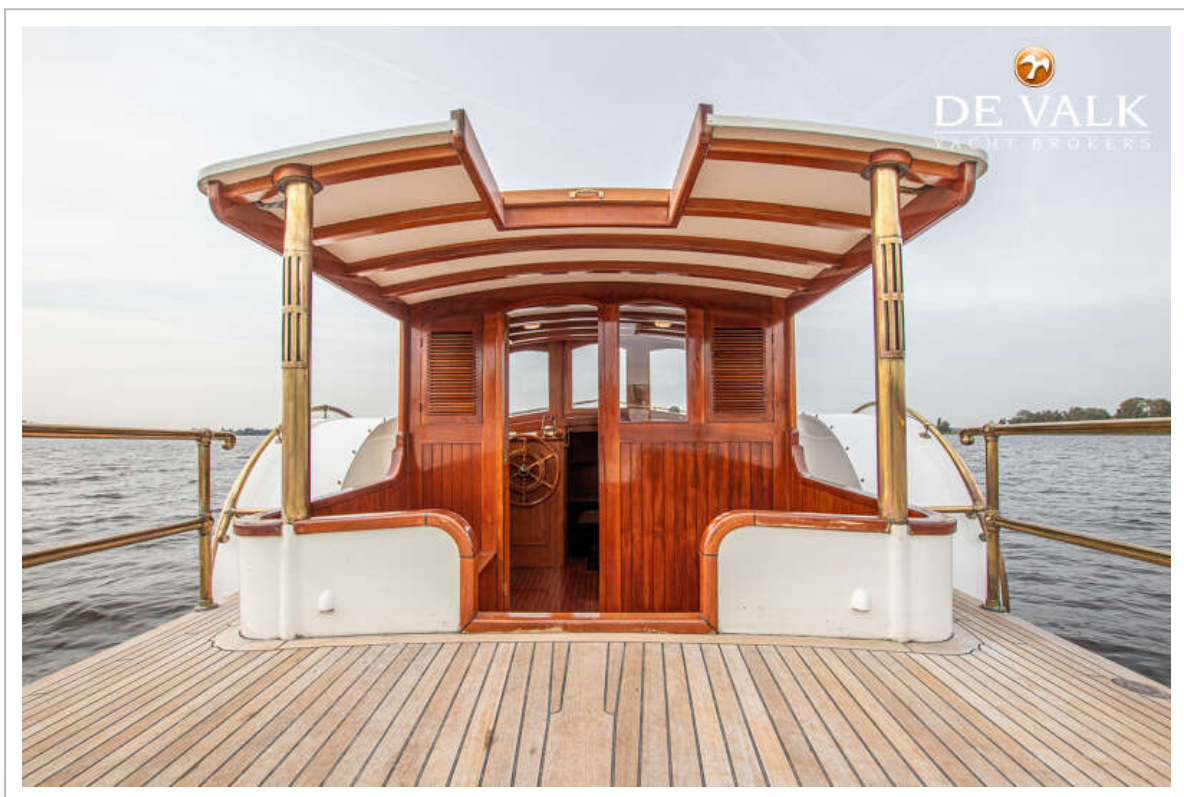
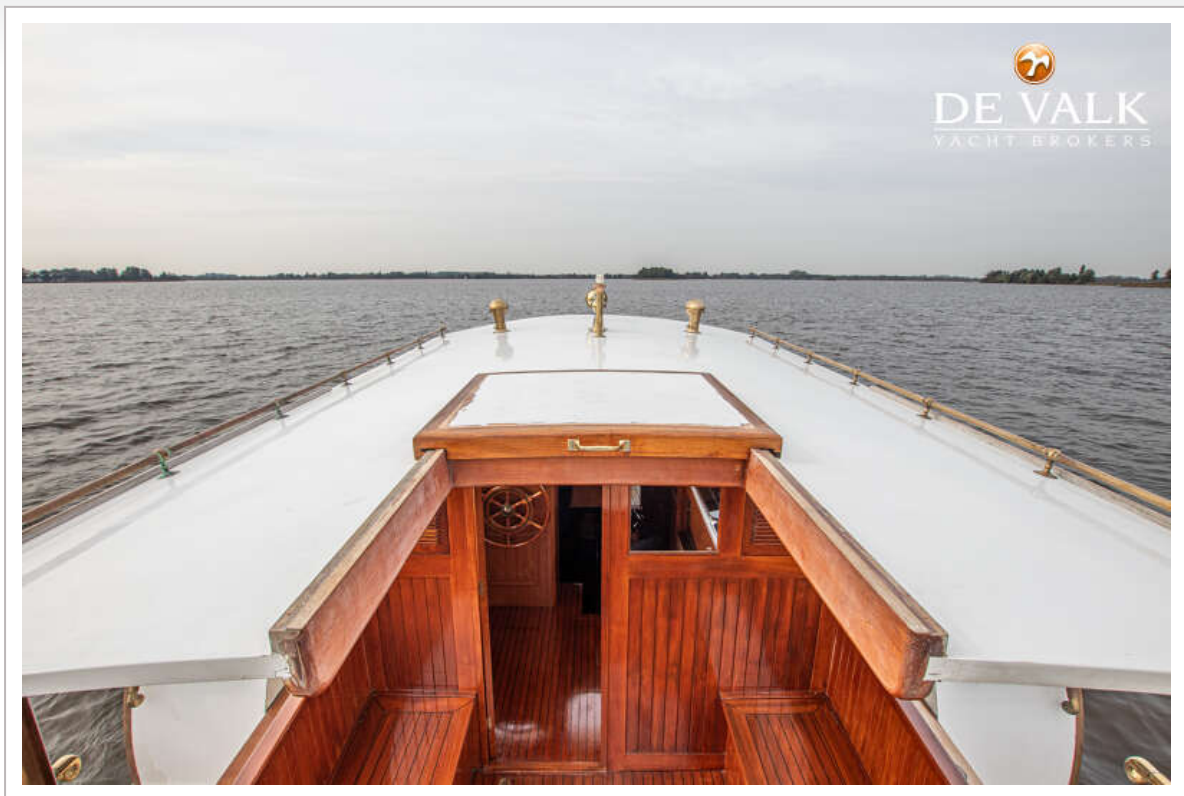


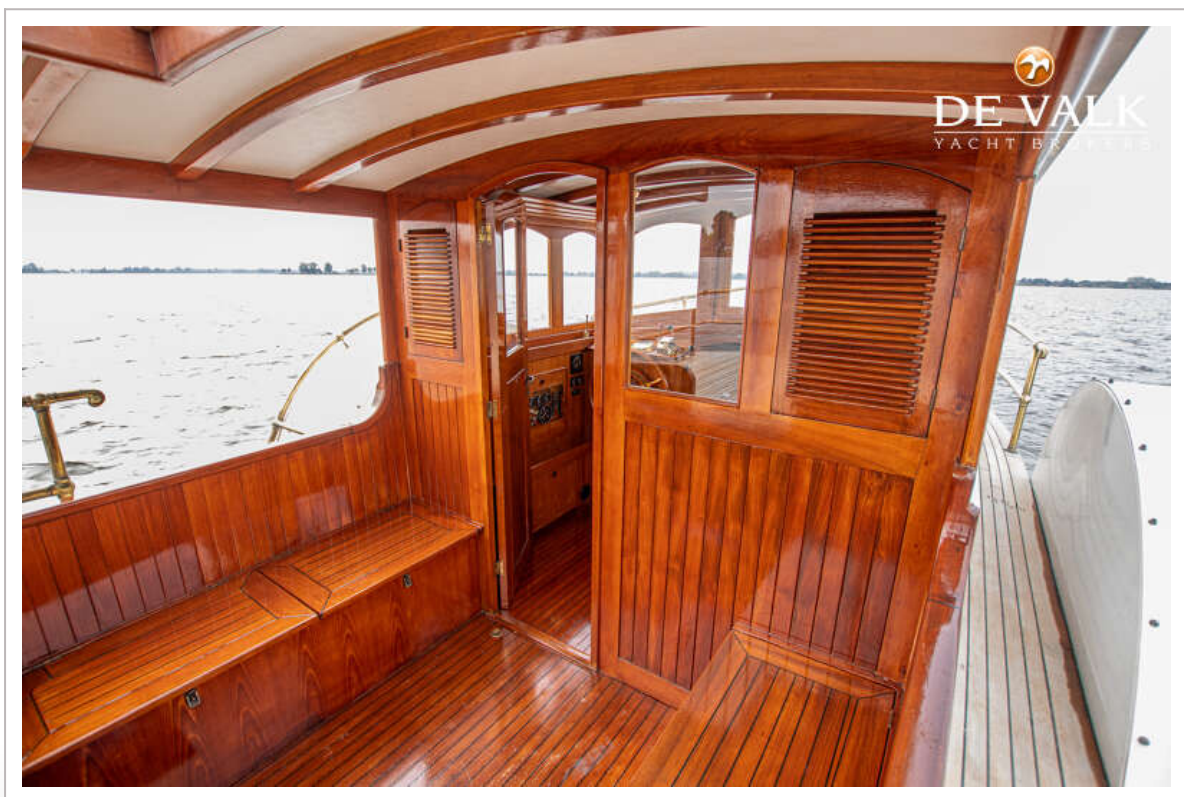




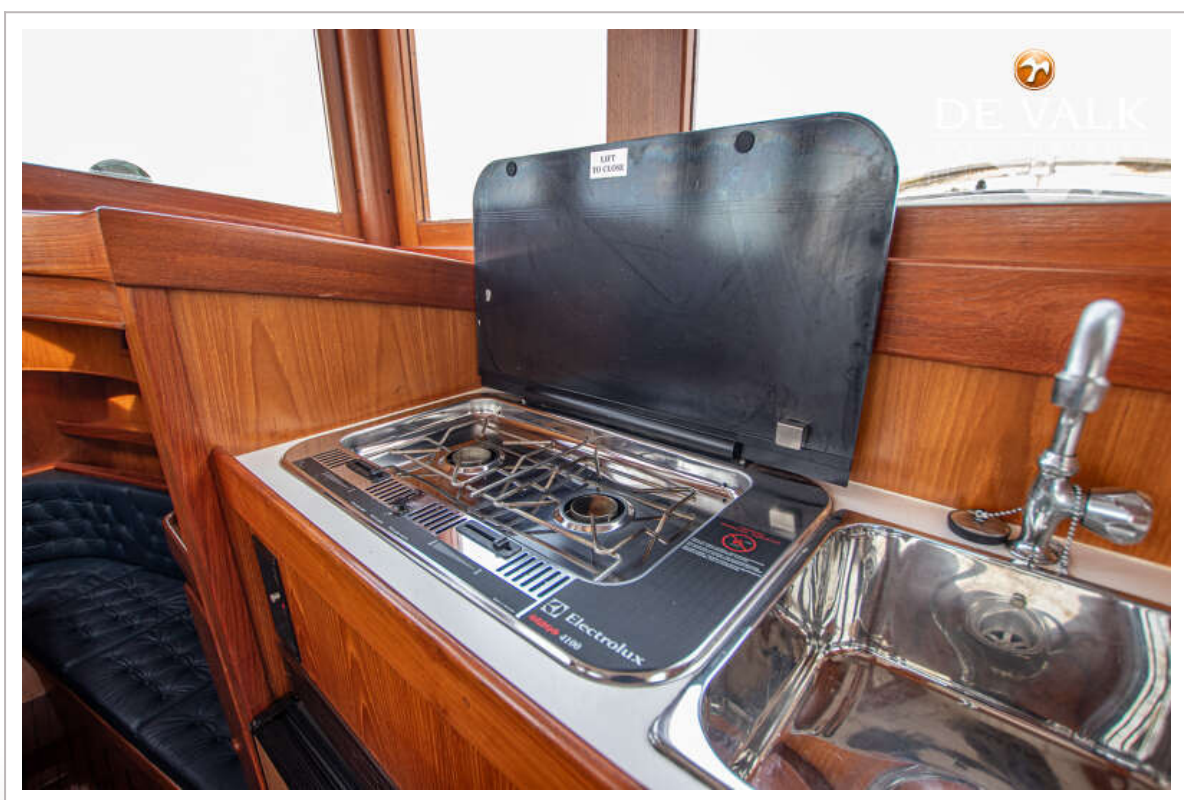
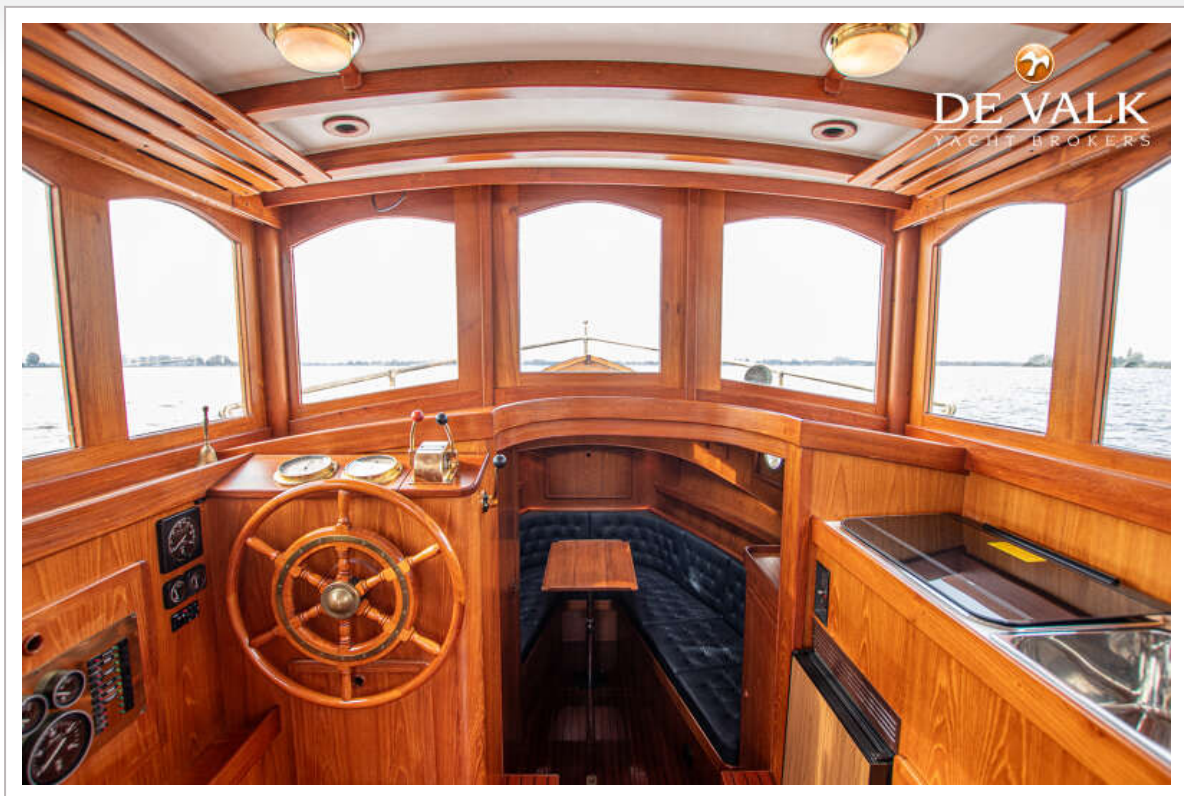


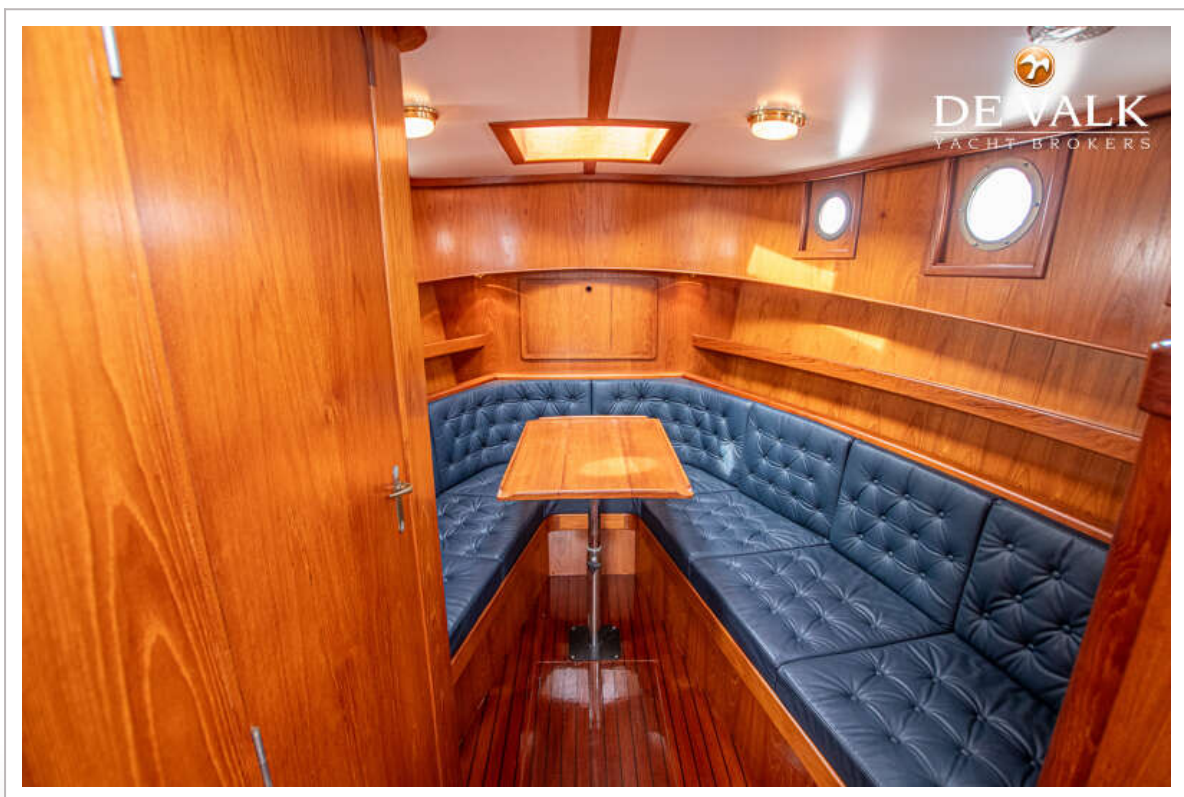
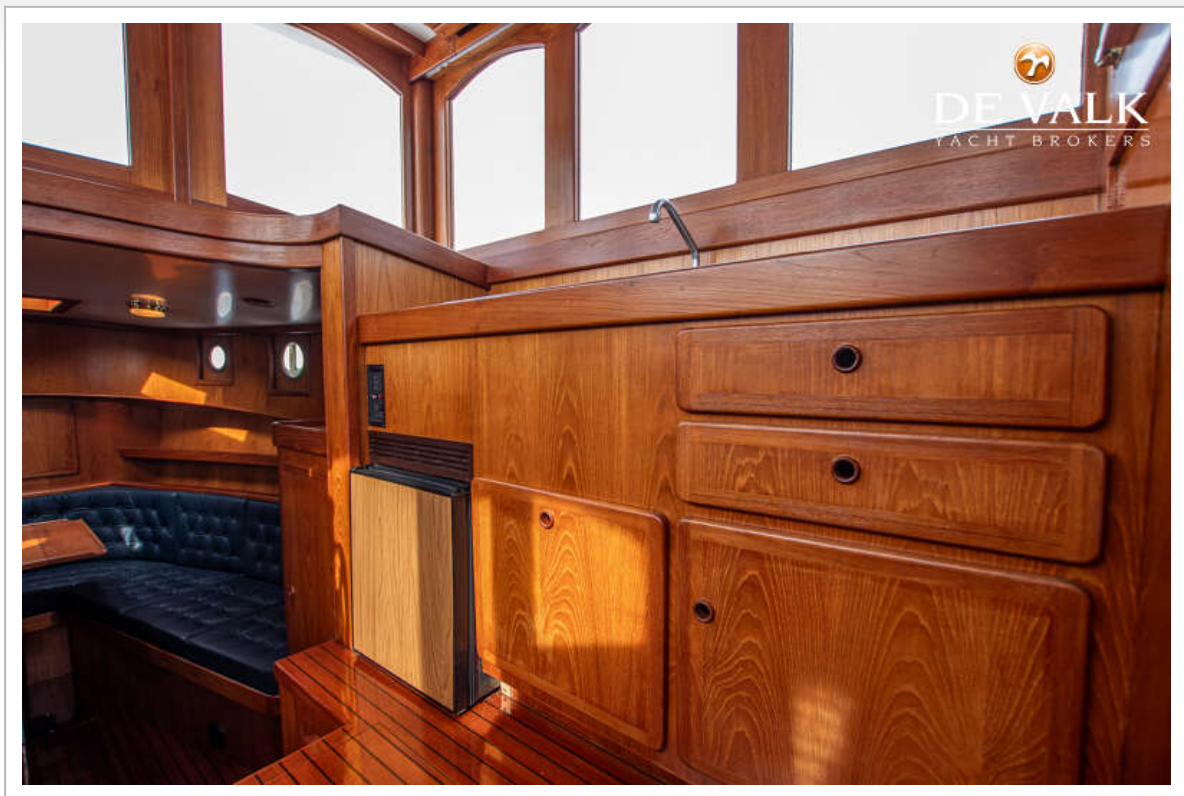




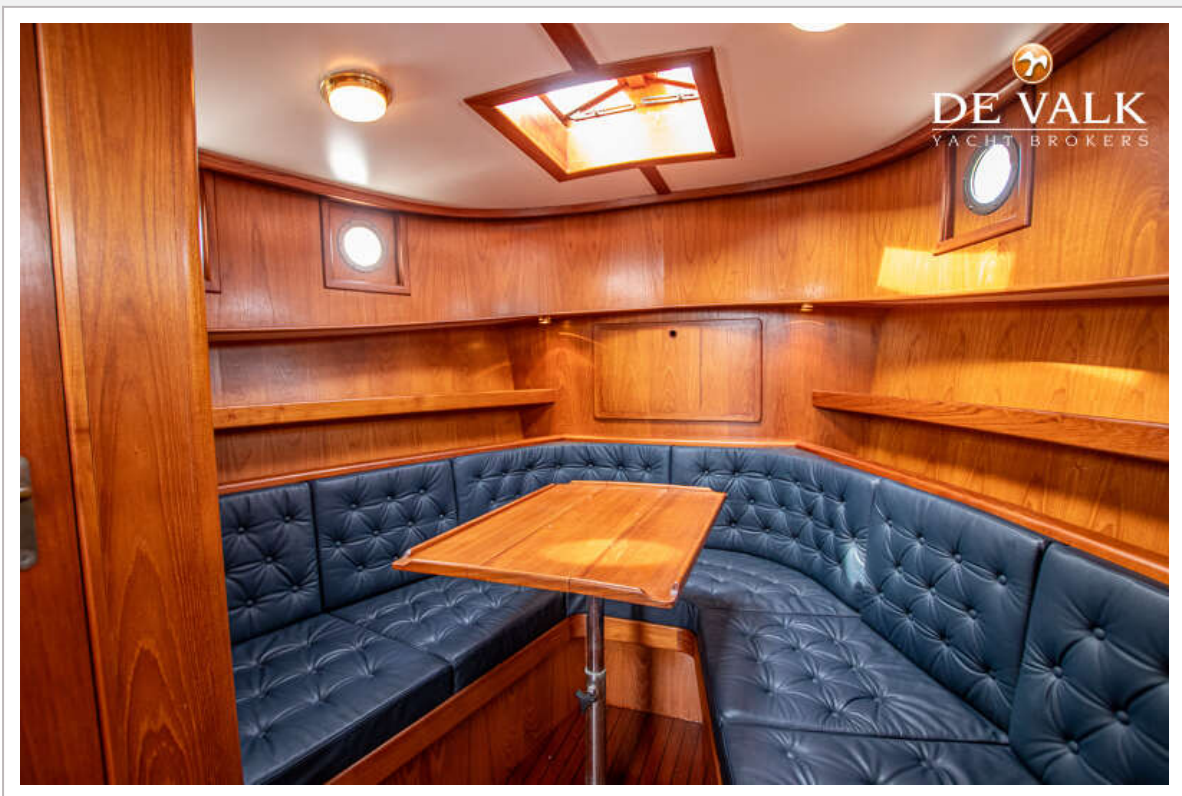




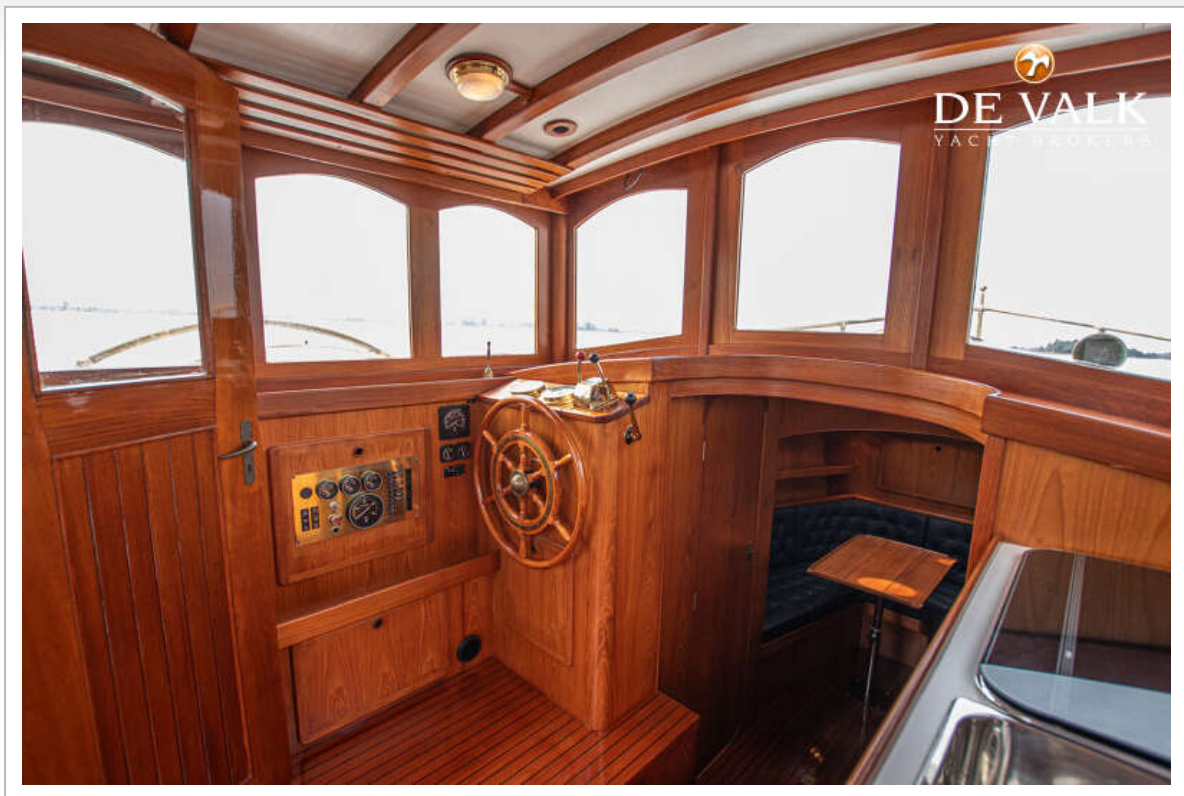




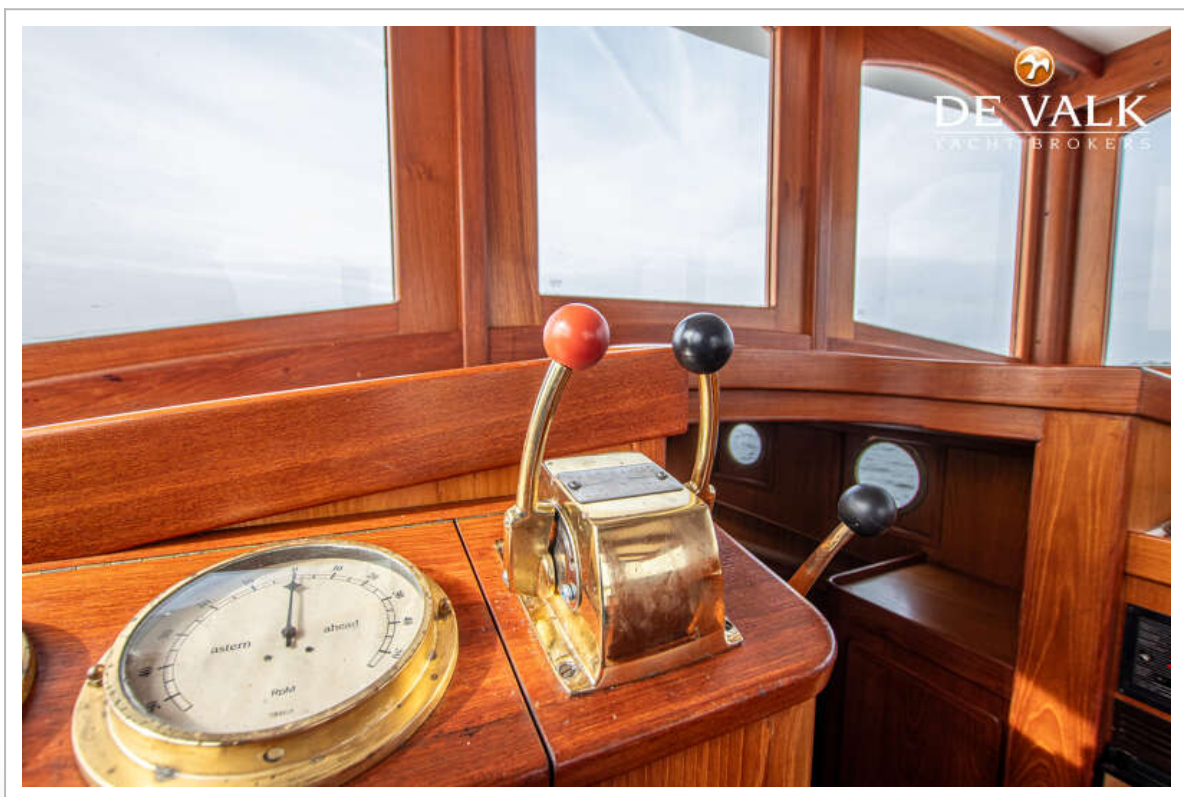




# RADARBOOT ATLANTA







# RADARBOOT ATLANTA





