



ALTENA 54 NG - DEMO



BROKER'S COMMENTS

The Altena 54' NG (Next Generation) is an elegant yacht with a tough exterior. The hull and superstructure are made of steel. The beautiful lines create a modern look. The underwater hull, is multi-keeled, this emulates the round bilge. The yacht is built to Altena Yachting's standard standards. Only high-quality products and materials are used, guaranteeing high quality.

Ian Pols

SPECIFICATIONS

Dimensions	16.86 x 4.76 x 1.15 (m)	Builder	Altena Yachting B.V.
Built	2022	Cabins	2
Material	Steel	Berths	4
Engine(s)	2 x John Deere 4045TFM85 diesel	Hp/Kw	2 x 125.00 (hp), 92.00 (kw)
Asking price	€ 1.050.000 (VAT Paid)	Lying	at sales office

CONTACT

Sales office	De Valk Altena	Telephone	+31 162 727211
Address	Keizersveer 3A 4941 TA Raamsdonksveer NL	E-mail	altena@devalk.nl

DISCLAIMER

These particulars are given in good faith as supplied but cannot be guaranteed.



GENERAL

Model	ALTENA 54 NG - DEMO
Type	motor yacht
LOA (m)	16,86
Beam (m)	4,76
Draft (m)	1,15
Air draft min (m)	3,63
Headroom (m)	2,00
Year built	2022
Builder	Altena Yachting B.V.
Country	The Netherlands
Designer	Trimm Design
Displacement (t)	40
CE norm	B
Hull material	steel
Hull colour	grey
Hull thickness (mm)	6
Hull shape	multi hard chine
Superstructure material	steel
Superstructure (mm)	5
Rubbing strake	stainless steel
Deck material	steel
Deck finish	synthetic teak
Superstructure deck finish	paint
Cockpit deck finish	paint
Antifouling (year)	2022
Window frame	Cascoframe
Window material	double glazing
Insulation	foam
Radar arch	collapsible
Mast can be lowered	electric



Fuel tank (litre)	steel 1500 BB
Fuel tank 2 (litre)	steel 1500 SB
Level indicator (fuel tank)	Yachtcontrol
Fuel daytank (litre)	steel 500
Level indicator (daytank)	Yachtcontrol
Freshwater tank (litre)	polyethylene 2000
Level indicator (freshwater)	Yachtcontrol
Blackwater tank (litre)	1000
Level indicator (blackwater)	Yachtcontrol
Blackwater tank extraction	deck extraction + pump
Wheel steering	hydraulic
Inside helm position	yes
More info on paintwork	AWLgrip system

ACCOMMODATION

Cabins	2
Berths	4
Interior	cherry
Floor	parquet
Open cockpit	yes
Saloon	yes
Headroom saloon (m)	2,00
Sliding roof	electric Webasto
Heating	central hot water Kabola KB20
Heating 2	floor heating
Air-conditioning	reverse cycle airco Webasto
Sliding door to cockpit	yes
Galley	yes
Countertop	Ceremic
Sink	stainless steel
Cooker	electric



Microwave/oven combi	AEG
Fridge	Isoterm
Freezer	Isoterm
Hot water system	220V or central heating 75L boiler
Water pressure system	electrical
Dishwasher	ATAG
Owners cabin	French bed
Wardrobe	hanging/drawers/shelves
Bathroom	en suite
Toilet	en suite
Toilet system	electric
Wash basin	in the bathroom
Shower	en suite
Guest cabin 1	French bed
Wardrobe	hanging and shelves
Bathroom	en suite
Toilet	en suite
Toilet system	electric
Wash basin	in the bathroom
Shower	en suite
Washing machine	Siemens
Dryer	Siemens

MACHINERY

No of engines	2
Make	John Deere
Type	4045TFM85
HP	125
kW	92
Fuel	diesel
Engine cooling system	freshwater heat exchanger



Drive	shaft
Engine controls	electrical Hydronautica
Gearbox	hydraulic ZF45
Bowthruster	hydraulic Side-power HS240 proportional
Sternthruster	hydraulic Side-power HS240 proportional
Exhaust	watercooled
Propeller type	fixed
Propeller shaft material	stainless steel
Shaft lubrication	water
Electric bilge pump	yes
Bilge alarm	yes
Electrical installation	12V 24V 220V
Generator	wet exhaust Onan Marine 9,5Kw MDKDM
Start battery	3x
Service battery	4x Mastervolt MLI Ultra Lithium 24/5500
Battery monitor	Mastervolt easyview 5
Battery charger/inverter	2x Mastervolt Mass Combi Pro 24V/ 3500W/ 100Amp
Shorepower	with cable
Insulation transformer	Mastervolt Mass GI 3.5
Stabilizers	fin Vetus hydraulic
Extra info	Hydronautica remote motor control (rmc)

NAVIGATION

Compass	Yachtcontrol
Depth sounder/log	Yachtcontrol
VHF	2x Simrad HS100
Autopilot	Simrad A2004 + FU80 follow-up
Rudder angle indicator	Yachtcontrol
GPS	Simrad
Plotter	2x Yachtcontrol
Electronic chart(s)	PC Navigo



AIS transceiver	Simrad
Camera	yes
Navigation lights	yes
Searchlight	yes

EQUIPMENT

Cockpit cushions	yes
Cockpit table	yes
Bathing platform	yes
Deck shower	yes
Deck wash	yes
Deck crane	hydraulic
Sea railing	stainless steel
Wiper	yes
Horn	yes
Fenders	yes
Mooring lines	yes
TV	yes
Radio	Fusion
Cockpit speakers	yes
Fire extinguisher	yes



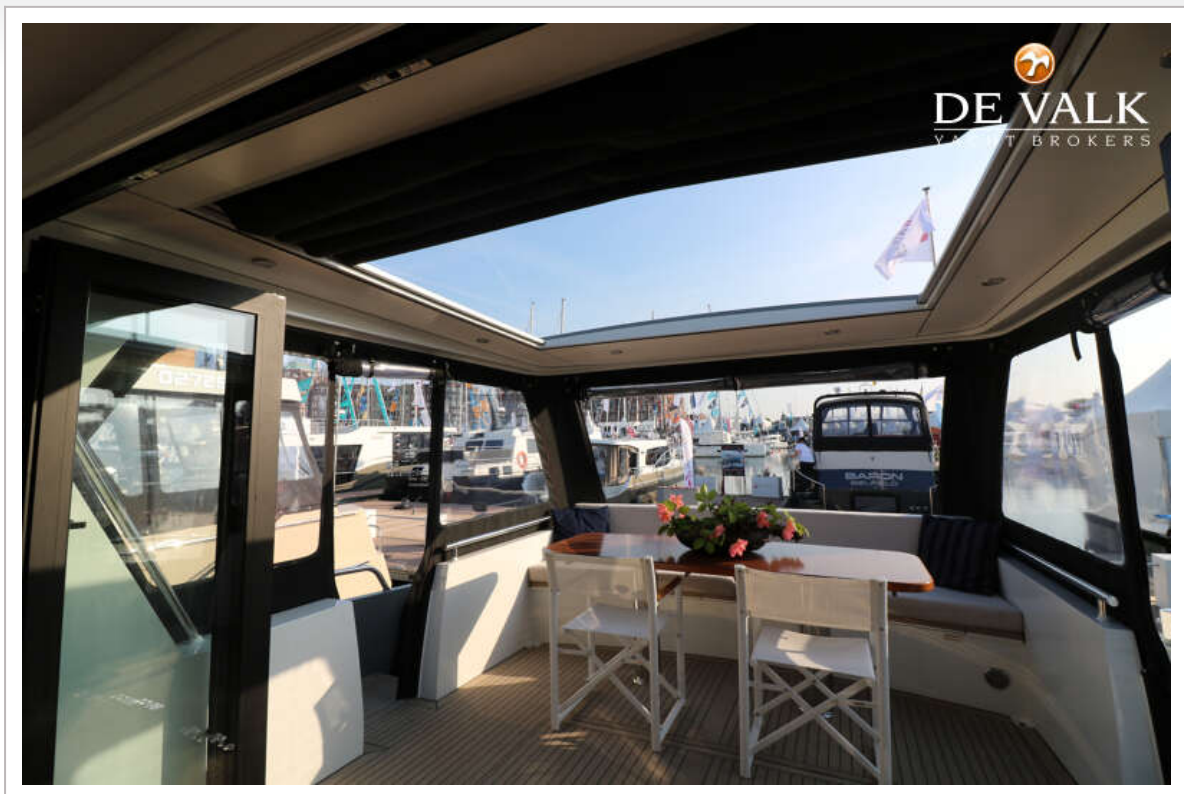
ALTENA 54 NG - DEMO



ALTENA 54 NG - DEMO



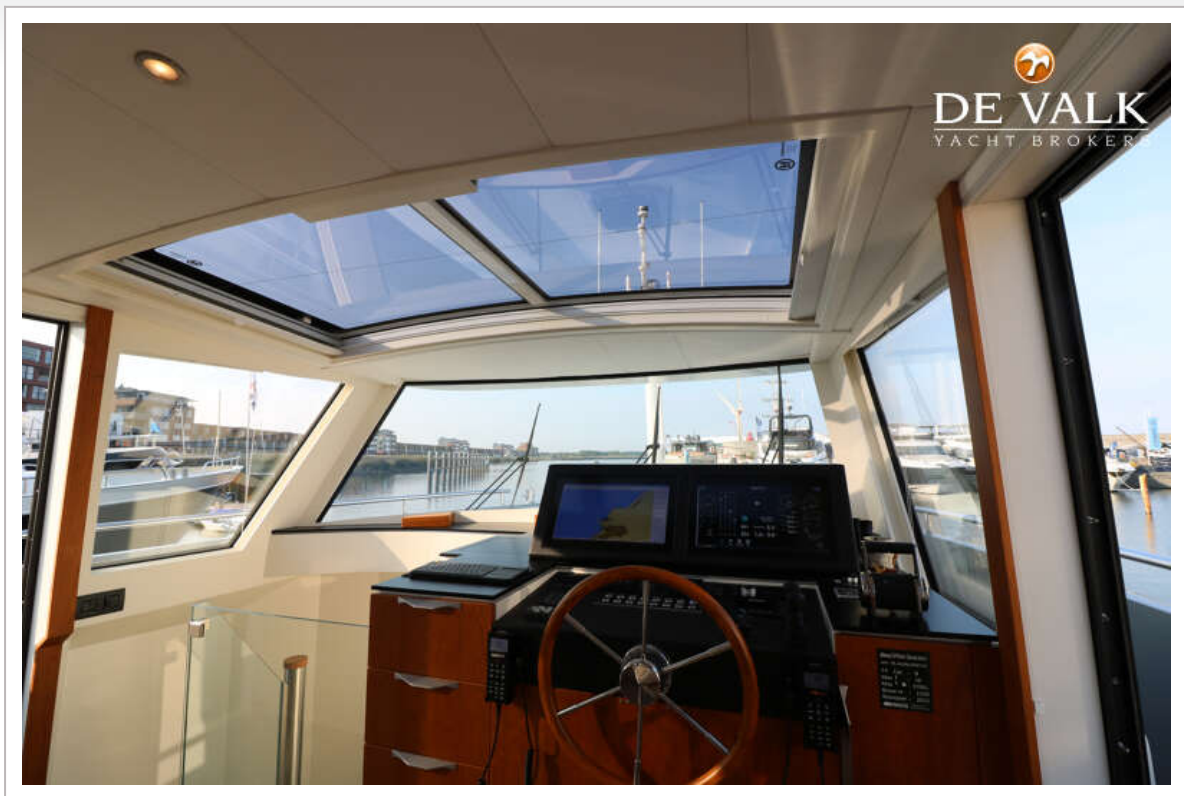
ALTENA 54 NG - DEMO

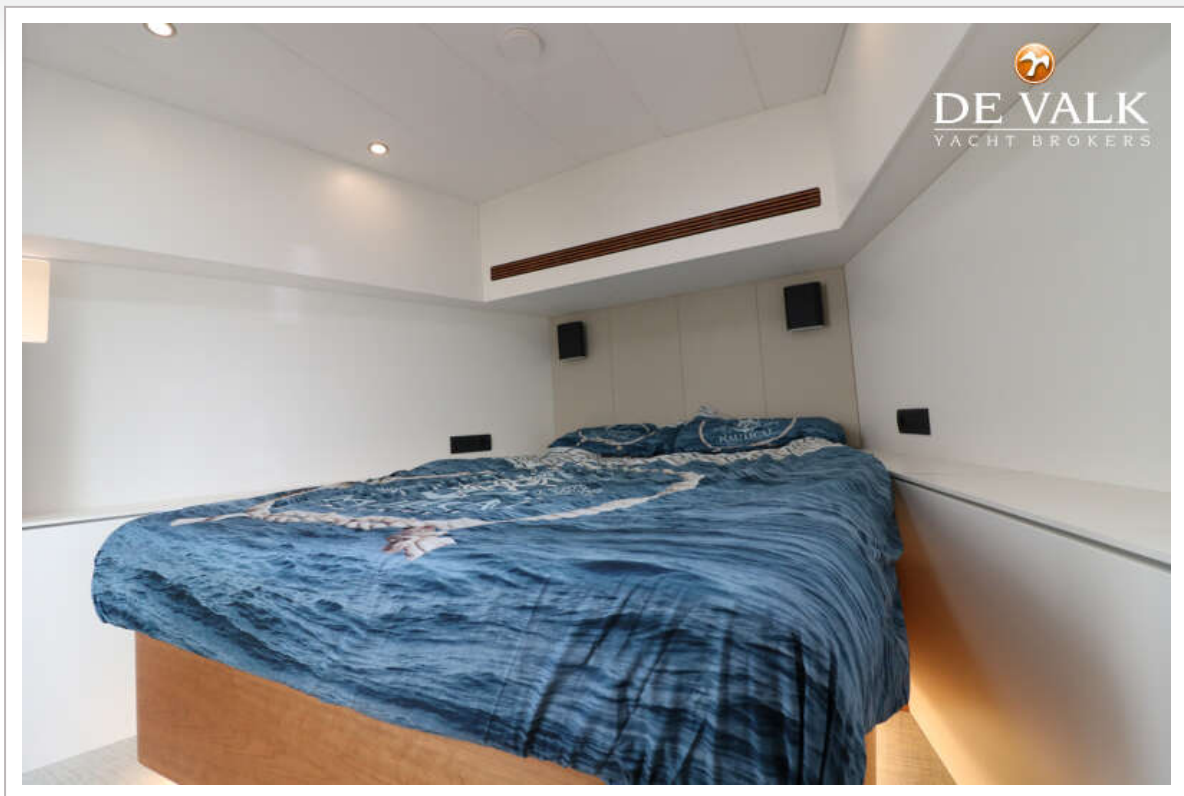


ALTENA 54 NG - DEMO



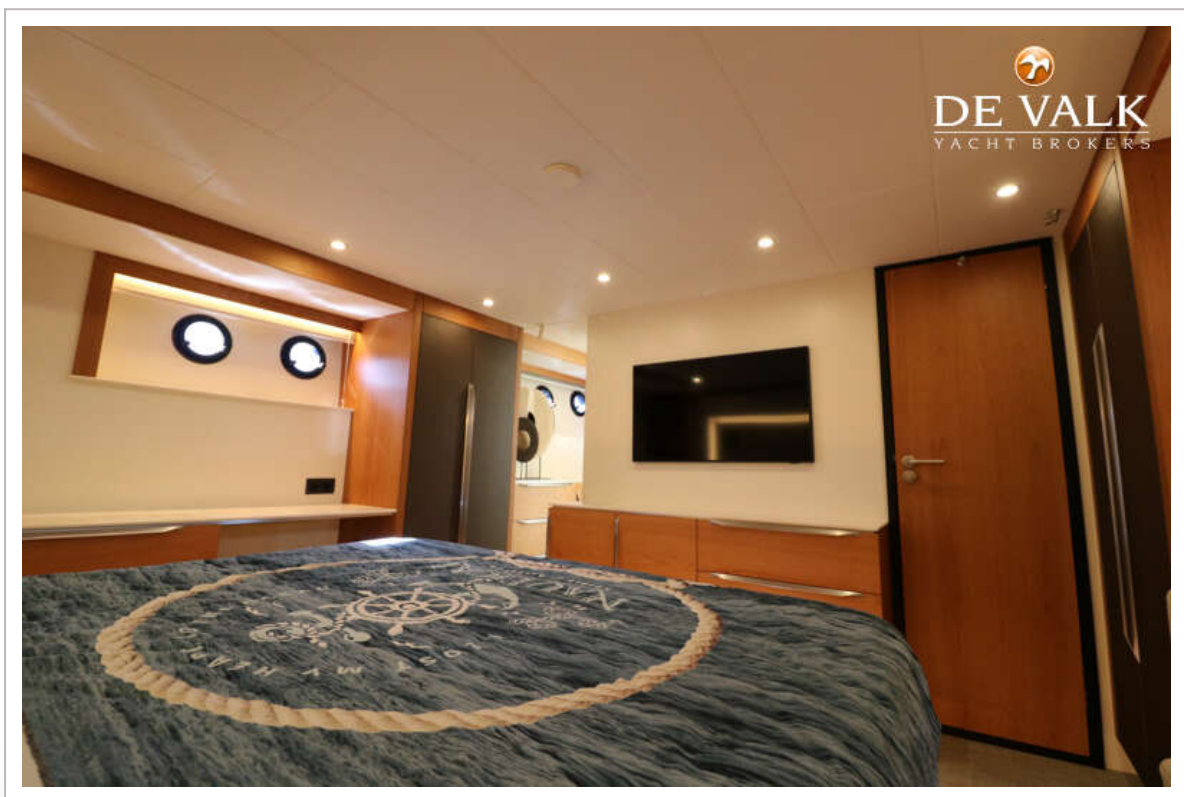
ALTENA 54 NG - DEMO

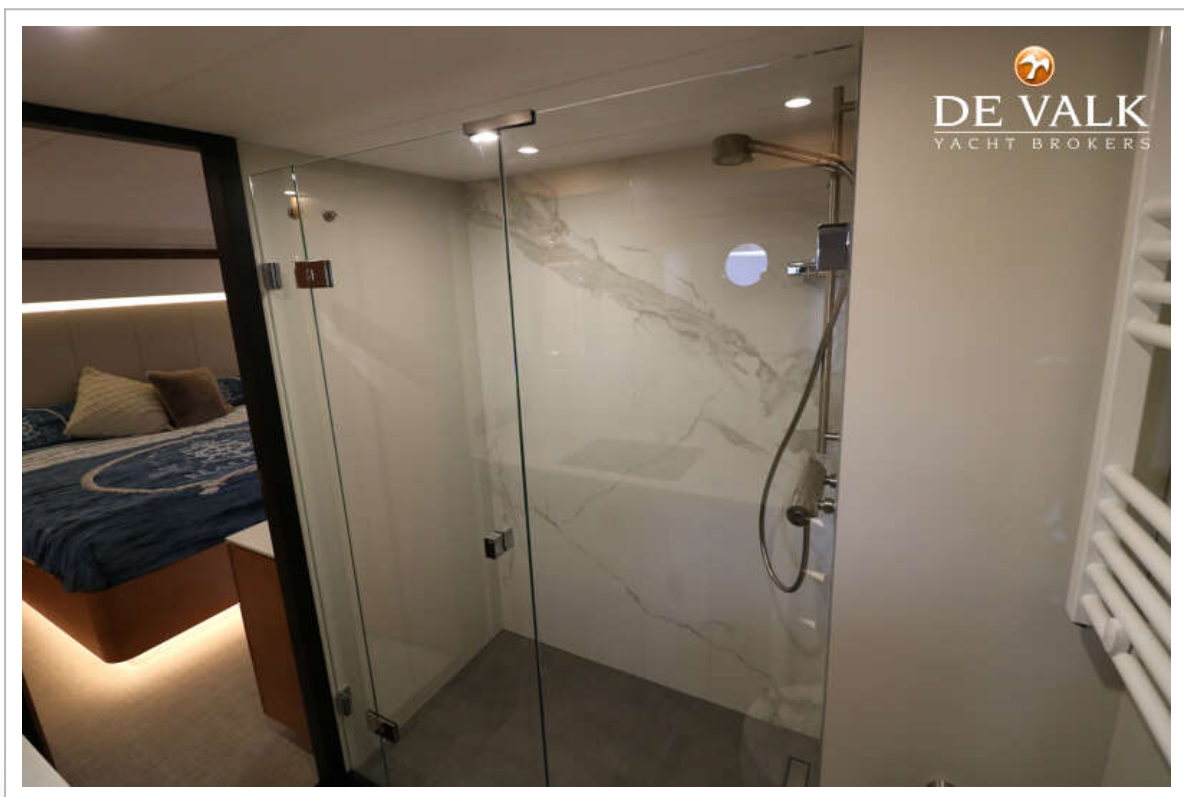




ALTENA 54 NG - DEMO







ALTENA 54 NG - DEMO



