



DE VALK
YACHT BROKERS



VROEGH & ALBLAS LADY X TRAWLER 1150



DE VALK
YACHT BROKERS

VROEGH & ALBLAS LADY X TRAWLER 1150

BROKER'S COMMENTS

"Meet the Vroegh & Alblas Lady X Trawler 1150, a 1997-built 11.5-meter steel motor yacht designed for comfort and reliability. This elegant vessel features a mahogany interior, a spacious open cockpit with a transom door, and dual steering stations for flexibility. Powered by a 135 hp John Deere diesel engine, it ensures smooth cruising on inland and coastal waters. Equipped with bow and stern thrusters and modern navigation systems, it's ready for adventure. Priced at EUR 139,500, it awaits in Sneek, Netherlands."

Henk Jan Vissia

SPECIFICATIONS

Dimensions	11,50 x 4,05 x 1,12 (m)	Builder	Vroegh & Alblas/eigenaar
Built	1997	Cabins	2
Material	Steel	Berths	6
Engine(s)	1 x John Deere 6068DFM diesel	Hp/Kw	135 (hp), 99,36 (kw)
Asking price	EUR 139.500 (vat: paid)	Lying	The Netherlands

CONTACT

Sales office	De Valk Sneek	Telephone	+31 515 42 80 30
Address	Zwolsmanweg 7 8606 KC Sneek The Netherlands	Fax	+31 (0)515 42 80 39
		E-mail	sneek@devalk.nl

DISCLAIMER

These particulars are given in good faith as supplied but cannot be guaranteed and cannot be used for contracts.



VROEGH & ALBLAS LADY X TRAWLER 1150

GENERAL

Model	VROEGH & ALBLAS LADY X TRAWLER 1150
Type	motor yacht
LOA (m)	11,50
LWL (m)	10,70
Beam (m)	4,05
Draft (m)	1,12
Air draft (m)	3,75
Air draft min (m)	2,50
Headroom (m)	1,97
Year built	1997
Builder	Vroegh & Alblas/eigenaar
Country	The Netherlands
Displacement (t)	12
CE norm	NA
Hull material	steel
Hull colour	beige
Hull thickness (mm)	6 mm
Hull shape	hard chine
Keel type	long keel
Superstructure material	steel
Superstructure (mm)	5 mm
Rubbing strake	stainless steel
Deck material	steel
Deck finish	non-skid paint
Superstructure deck finish	non-skid paint
Antifouling (year)	2023
Window frame	aluminium
Window material	glass
Deckhatch	1 X
Portholes	aluminium



VROEGH & ALBLAS LADY X TRAWLER 1150

Insulation	rockwool
Fuel tank (litre)	steel 600 Ltr.
Level indicator (fuel tank)	yes
Freshwater tank (litre)	stainless steel 2 X 150 Ltr.
Blackwater tank (litre)	stainless steel 150 Ltr.
Level indicator (blackwater)	yes
Greywater tank (litre)	polyethylene 65 Ltr.
Wheel steering	electric Vetus
Inside helm position	yes
Outside helm position	electric
More info on paintwork	Hull repainted 2023 (one component system)

ACCOMMODATION

Cabins	2
Berths	6
Interior	mahogany
Floor	woodprint
Saloon	yes
Headroom saloon (m)	1,97 Mtr.
Heating	diesel ducted hot air Eberspacher
Heating 2	floor heating In galley electrical
Dinette to convert into berth	2,00 Mtr./1,30 Mtr.
Opening door to cockpit	yes
Countertop	plastic Marble motif
Sink	stainless steel
Cooker	induction Gutmann 2022
Microwave	Samsung
Fridge	Dometic 110 Ltr.
Freezer	In Fridge
Hot water system	220V + engine



VROEGH & ALBLAS LADY X TRAWLER 1150

Water pressure system	electrical
Owners cabin	French bed
Bed length (m)	2,00 Mtr./1,35 Mtr.
Wardrobe	hanging and shelves
Bathroom	shared
Toilet	separate
Toilet system	electric
Wash basin	at the toilet
Shower	separate
Guest cabin 1	double bed
Bed length (m)	2,00 Mtr./ 1,40 Mtr.
Bathroom	shared
Toilet	shared
Toilet system	electric
Wash basin	at the toilet
Washing machine	Candy Aquamatic 10 T

MACHINERY

No of engines	1
Make	John Deere
Type	6068DFM
HP	135
kW	99.36
Fuel	diesel
Year installed	1998
Cruising speed (kn)	7
Engine hours	3500
Engine cooling system	freshwater heat exchanger
Drive	shaft
Engine controls	hydraulic
Gearbox	hydraulic



VROEGH & ALBLAS LADY X TRAWLER 1150

Bowthruster	electric 24 V Vetus
Sternthruster	electric 24 V Vetus
Propeller type	fixed
Propeller blades	3
Propeller shaft material	stainless steel
Shaft lubrication	grease
Electric bilge pump	2 X
Bilge alarm	yes
Generator	Koala 60 ruggerini
Batteries	5 X
Start battery	85 Ah.
Service battery	2 X 225 Ah.
Bowthruster battery	180 Ah. 2024
Sternthruster battery	180 Ah. 2024
Battery charger	Mastervolt 80 A
Inverter	Pagero/Koala 6 kVA
Battery charger/inverter	Mastervolt 2000 W
Solar panel	2 X 150 W met PWM-regelaars
Shorepower	with cable

NAVIGATION

Depth sounder	Raymarine 2023
Fish finder	Navman Fish 450
VHF handheld	IC-M501 Euro
Rudder angle indicator	yes
Plotter/GPS	Raymarine E 120 W

EQUIPMENT

Cockpit cushions	yes
-------------------------	-----



VROEGH & ALBLAS LADY X TRAWLER 1150

Cockpit table	yes
Bathing platform	yes
Transom door	yes
Deck shower	yes
Anchor	Pool
Anchor chain	yes
Windlass	electrical Lofrans 1000 W 24V
Davits	stainless steel
Sea railing	stainless steel
Wiper	3 X
Horn	electric
Fenders	yes
Mooring lines	yes
Alarm system	yes
TV	Salora
Radio-cd player	Pioneer
Speakers in salon	4 X
Clock - barometer	yes
Fire extinguisher	2 X



VROEGH & ALBLAS LADY X TRAWLER 1150



VROEGH & ALBLAS LADY X TRAWLER 1150



VROEGH & ALBLAS LADY X TRAWLER 1150



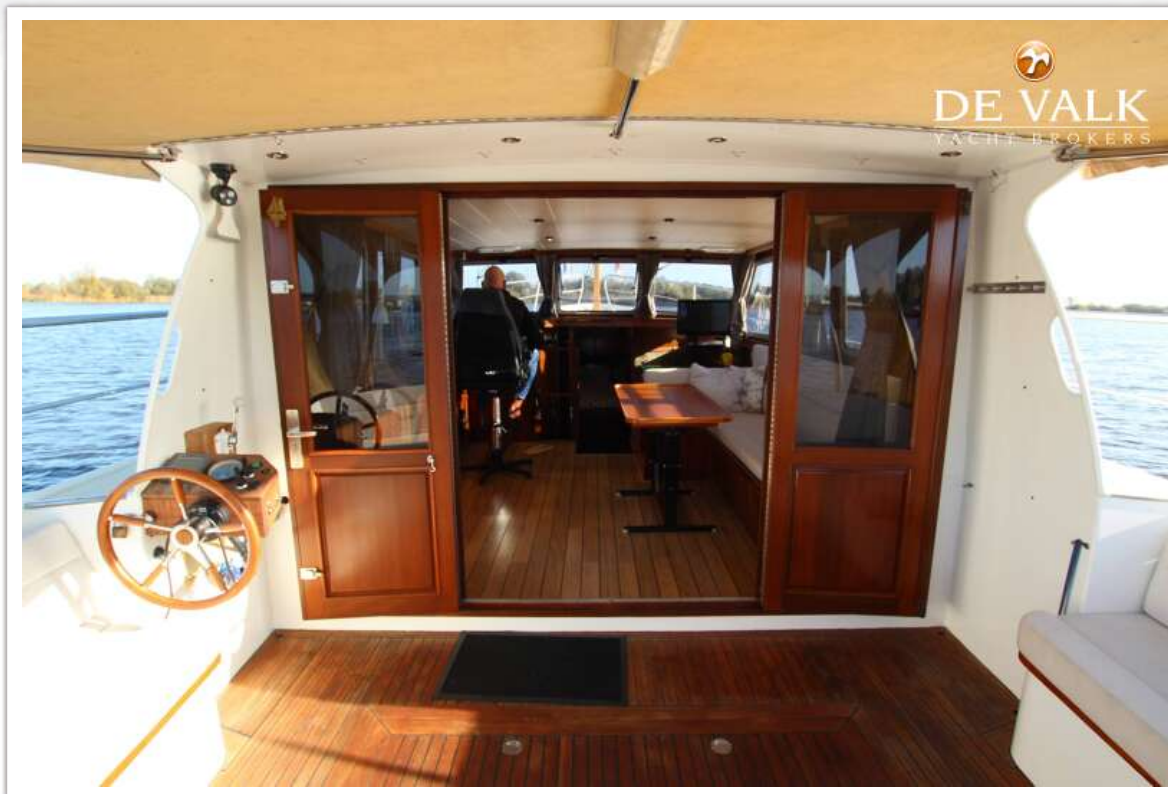
VROEGH & ALBLAS LADY X TRAWLER 1150



VROEGH & ALBLAS LADY X TRAWLER 1150



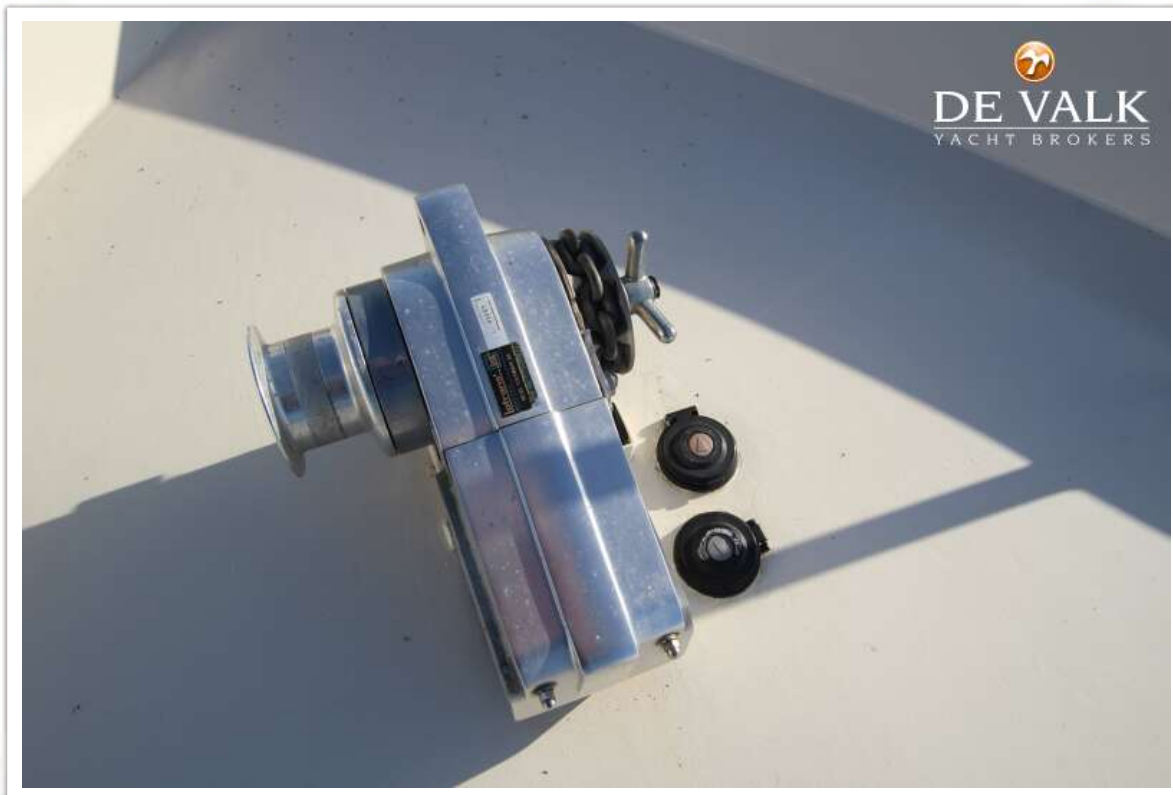
VROEGH & ALBLAS LADY X TRAWLER 1150



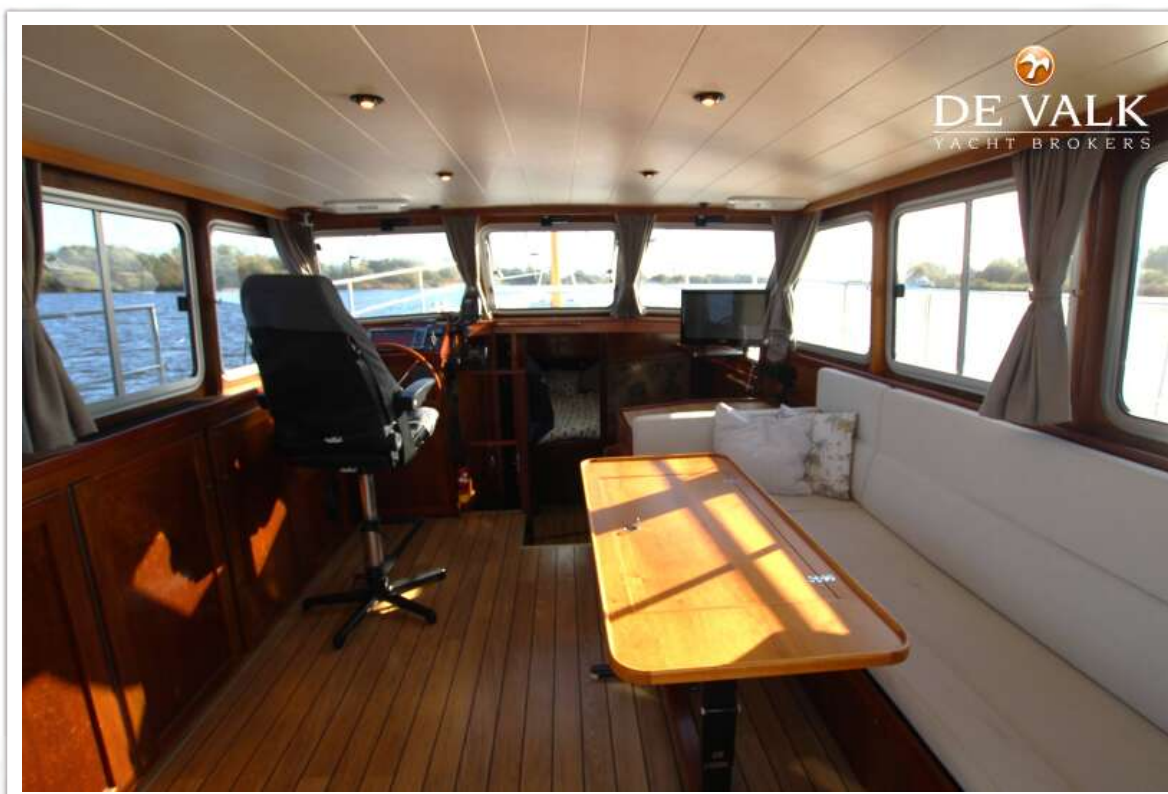
VROEGH & ALBLAS LADY X TRAWLER 1150



VROEGH & ALBLAS LADY X TRAWLER 1150



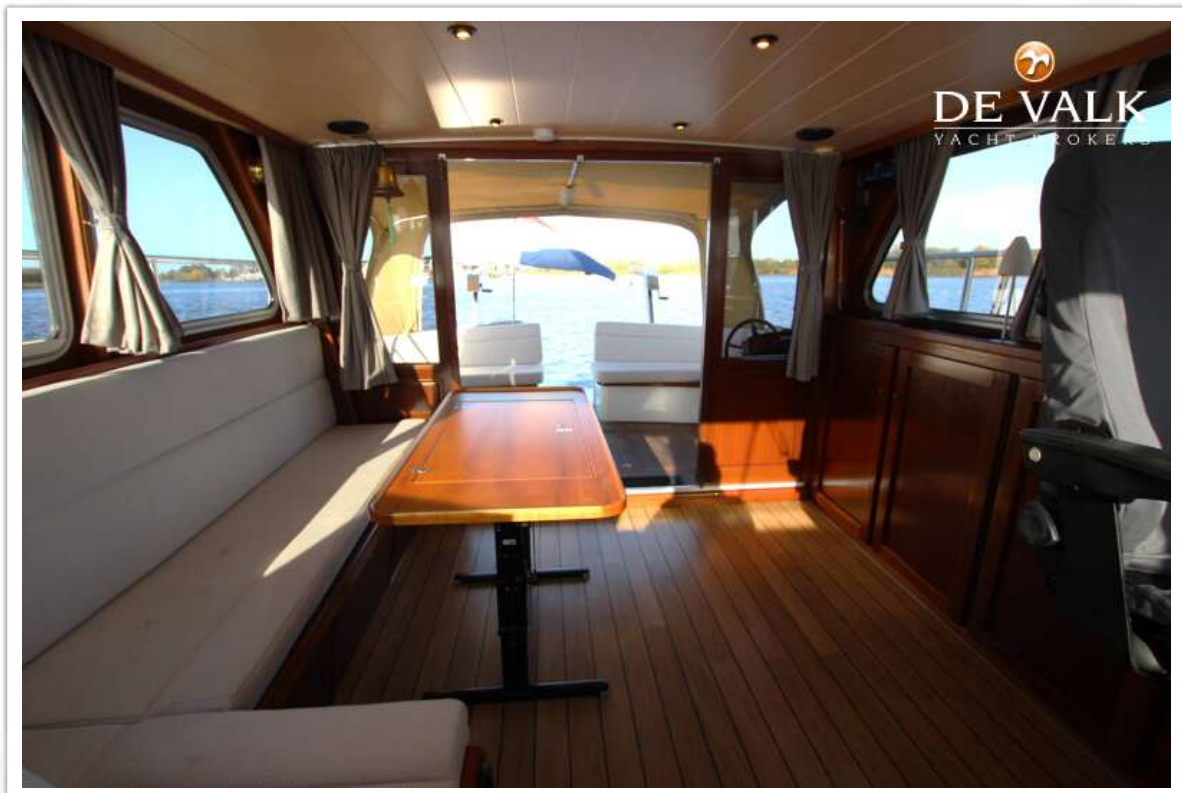
VROEGH & ALBLAS LADY X TRAWLER 1150



VROEGH & ALBLAS LADY X TRAWLER 1150

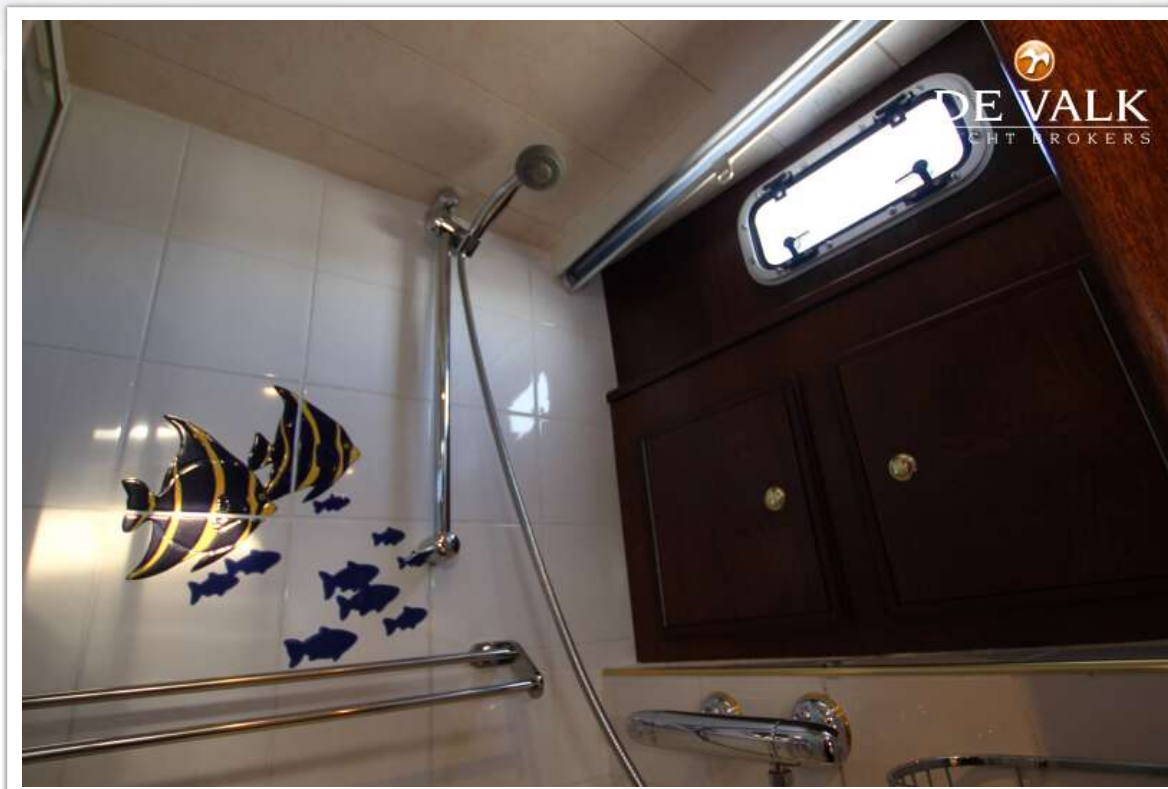


VROEGH & ALBLAS LADY X TRAWLER 1150

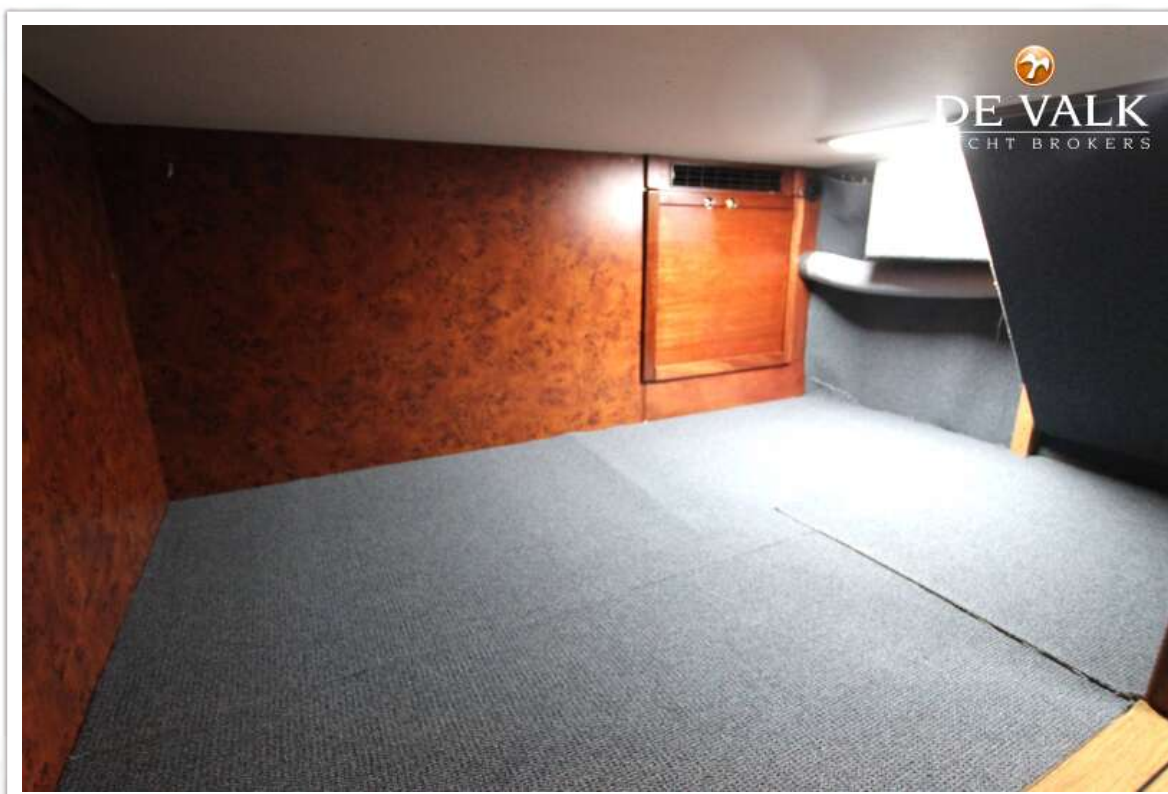


VROEGH & ALBLAS LADY X TRAWLER 1150

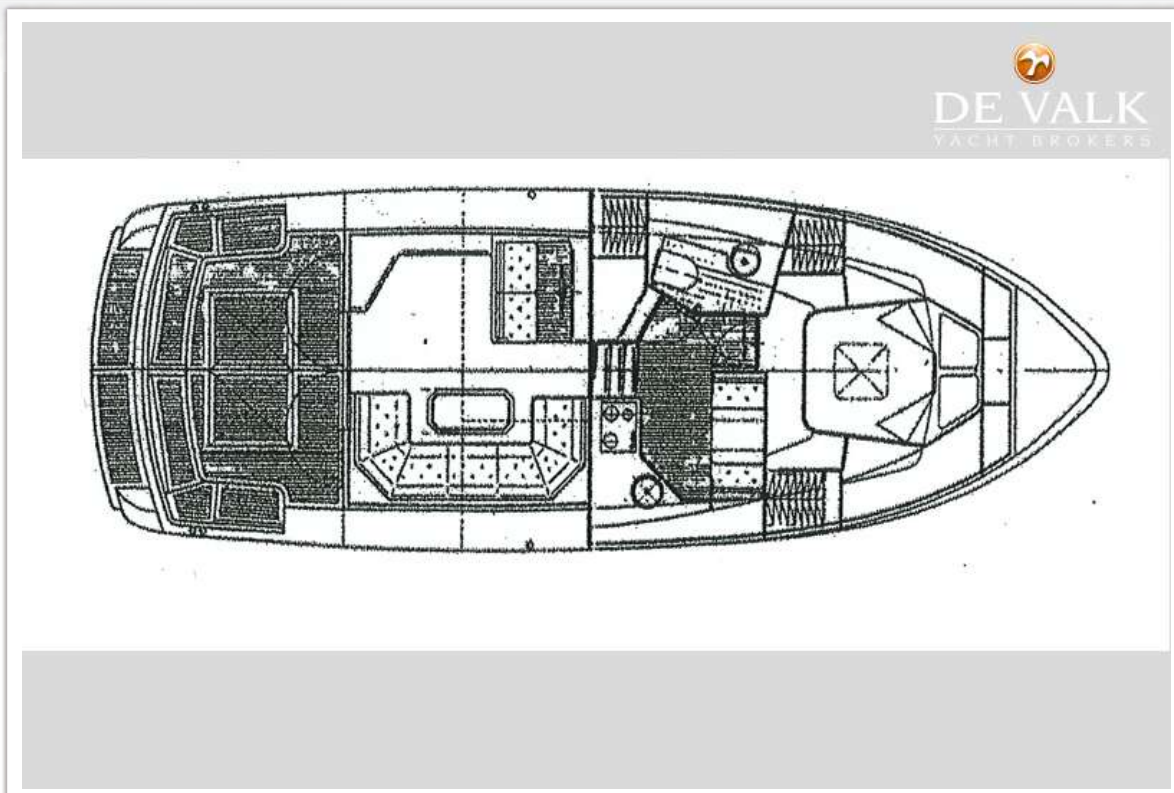




VROEGH & ALBLAS LADY X TRAWLER 1150



VROEGH & ABLAS LADY X TRAWLER 1150



VROEGH & ALBLAS LADY X TRAWLER 1150

