



KEIZER YACHTS 42



BROKER'S COMMENTS

This Keizer Yachts 42 is from the second owner and in clean condition. The boat was completely repainted in grey/silver last winter. There is a generator and air conditioning installed and a new Bimini hood. EU VAT has been paid in full. Dutch design, quality built in Germany. She offers great performance at sea and great comfort due to her quiet Volvo D6 engines. The garage accommodates a 220cm tender + engine. The boat can be viewed at our sales office in Loosdrecht.

Sjoerd Paddenburg

SPECIFICATIONS

Dimensions	13.42 x 3.99 x 1.00 (m)	Builder	Keizer Yachts
Built	2019	Cabins	1
Material	GRP	Berths	4
Engine(s)	2 x Volvo D6 diesel	Hp/Kw	2 x 400.00 (hp), 294.40 (kw)
Asking price	€ 325.000 (VAT Paid)	Lying	at sales office

CONTACT

Sales office	De Valk Loosdrecht B.V.	Telephone	+31 (0)35 582 90 30
Address	't Breukeleveense Meentje 6 1231LM Loosdrecht / Wijdmeren NL	E-mail	loosdrecht@devalk.nl

DISCLAIMER

These particulars are given in good faith as supplied but cannot be guaranteed.



GENERAL

Model	KEIZER YACHTS 42
Type	motor yacht
LOA (m)	13,42
Beam (m)	3,99
Draft (m)	1,00
Headroom (m)	1,90
Year built	2019
Builder	Keizer Yachts
Country	Germany
Designer	Vripack
Displacement (t)	11
CE norm	B
Hull material	GRP
Hull colour	grey
Hull shape	deep-V
Superstructure material	GRP
Rubbing strake	stainless steel
Deck material	GRP
Deck finish	teak
Superstructure deck finish	teak
Cockpit deck finish	teak
Window material	tempered glass
Deckhatch	yes
Portholes	stainless steel
Fuel tank (litre)	1200
Level indicator (fuel tank)	Volvo Penta
Freshwater tank (litre)	250
Level indicator (freshwater)	yes
Blackwater tank (litre)	120
Level indicator (blackwater)	yes



Wheel steering	hydraulic
Outside helm position	hydraulic

ACCOMMODATION

Cabins	1
Berths	4
Interior	cherry
Floor	wood
Open cockpit	yes
Deck saloon	yes
Saloon	yes
Headroom saloon (m)	1,90
Air-conditioning	Velair
Sliding door to cockpit	yes
Sliding door to aft deck	yes
Countertop	corian
Sink	GRP
Cooker	electric 2-ring and grill
Fridge	+ cooling drawer
Hot water system	220V + engine
Water pressure system	electrical
Owners cabin	double bed
Bed length (m)	2,20
Wardrobe	shelves
Bathroom	shared
Toilet	shared
Toilet system	electric
Wash basin	in the bathroom
Shower	separate
Guest cabin 1	single bed 2x
Bed length (m)	2,10



Wardrobe

shelves

MACHINERY

No of engines

2

Make

Volvo

Type

D6

HP

400

kW

294.40

Fuel

diesel

Maximum speed (kn)

40

Cruising speed (kn)

25

Consumption (l/hr)

80

Engine hours

376

Engine cooling system

freshwater heat exchanger

Drive

stern

Engine controls

electrical + dockmate for engines and bowthruster

Gearbox

hydraulic

Bowthruster

Side power SE-100

Gearbox

mechanical

Exhaust

watercooled

Propeller type

Duoprop

Manual bilge pump

yes

Electric bilge pump

yes

Electrical installation

220V / 12V

Generator

Fisher Panda 3,5 kVA

Start battery

2x exide 95Ah

Service battery

4x exide 1200ah

Bowthruster battery

1x 95Ah

Battery charger

Christel 12v 40A

Inverter

Mastervolt AC Master 12/3500

Diode battery combiners

yes



Shorepower	with cable
Trimtabs	Bennet

NAVIGATION

Compass	Garmin GPS map 7012 Touchscreen
Depth sounder	Garmin GPS map 7012 Touchscreen
Log	Garmin GPS map 7012 Touchscreen
VHF	Garmin 300i
VHF handheld	yes
Plotter/GPS	Garmin GPS map 7012 Touchscreen
AIS transceiver	yes
Navigation lights	yes

EQUIPMENT

Fixed windscreen	yes
Bimini	New 2024
Sun awning	With carbon poles
Winter cover	yes
Cockpit cushions	yes
Cockpit table	Extendable
Bathing platform	yes
Boarding ladder	stainless steel Manual passarelle/gangway
Transom door	yes
Deck shower	Warm and cold water
Anchor	yes
Anchor chain	yes
Windlass	electrical
Wiper	2x
Fenders	yes
Mooring lines	yes
Radio	Fusion Marine inside and outside

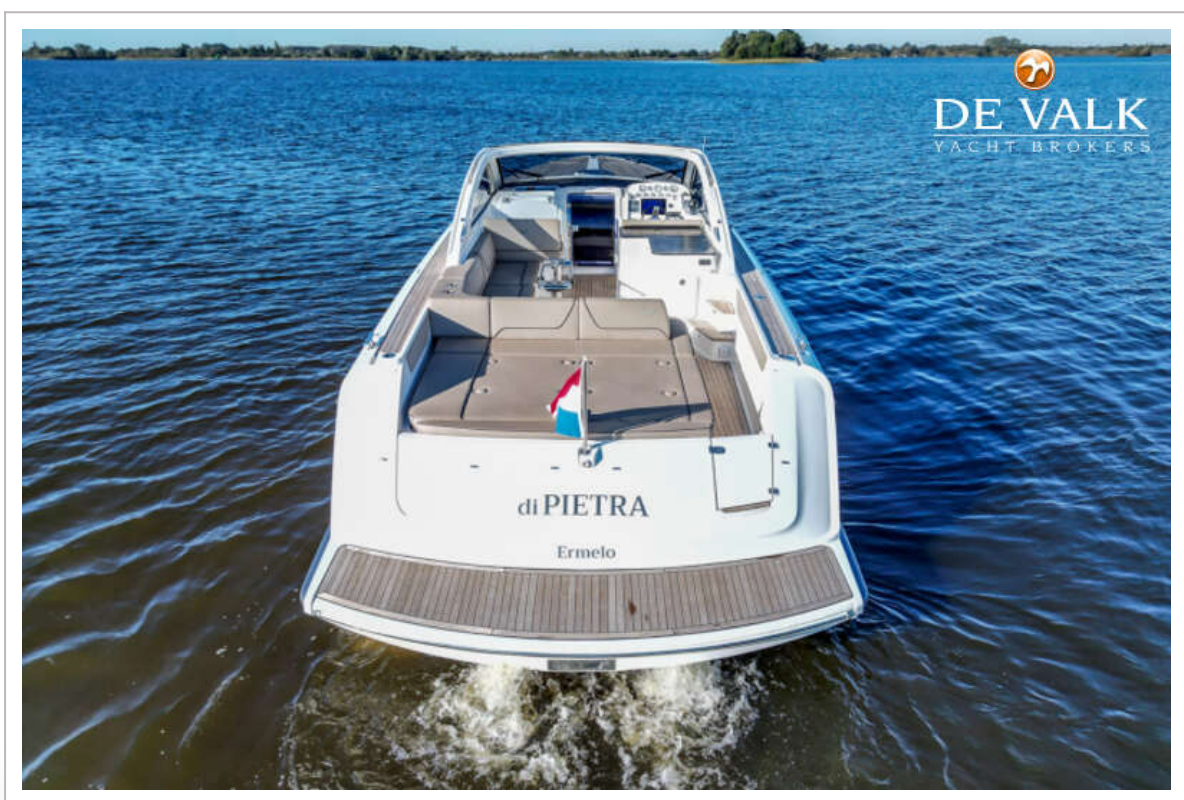


Cockpit speakers	yes
Speakers in salon	yes
Speakers in cabin	yes
Fire extinguisher	yes
Extinguisher in engine room	yes
Auto extinguisher system	yes
Extra info	Tender garage (fit for dinghy) 2,30 max.

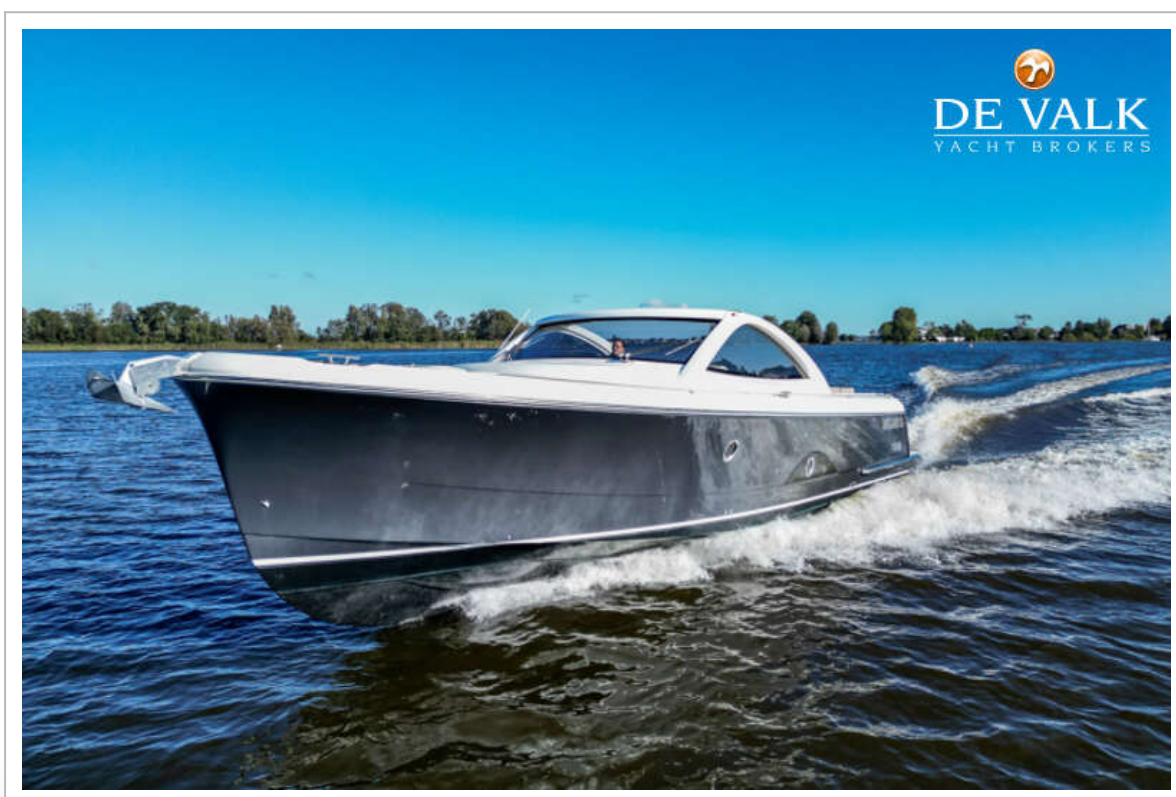










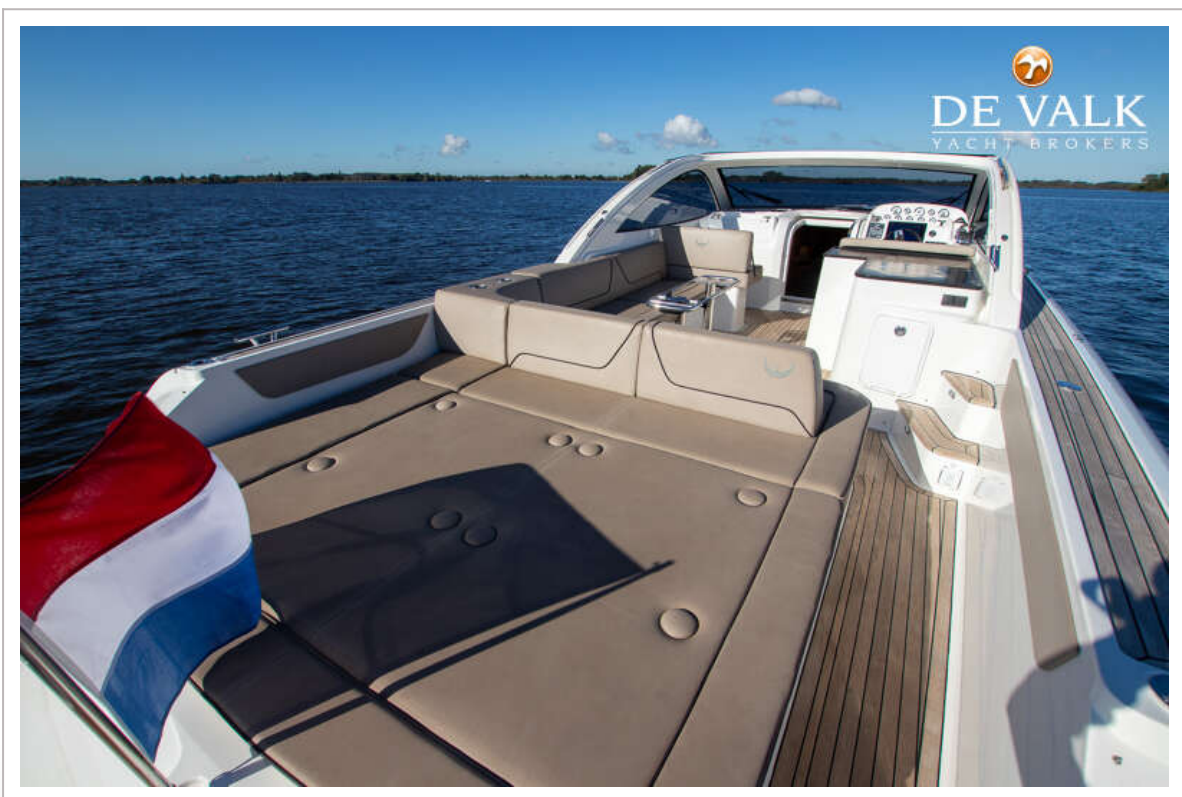






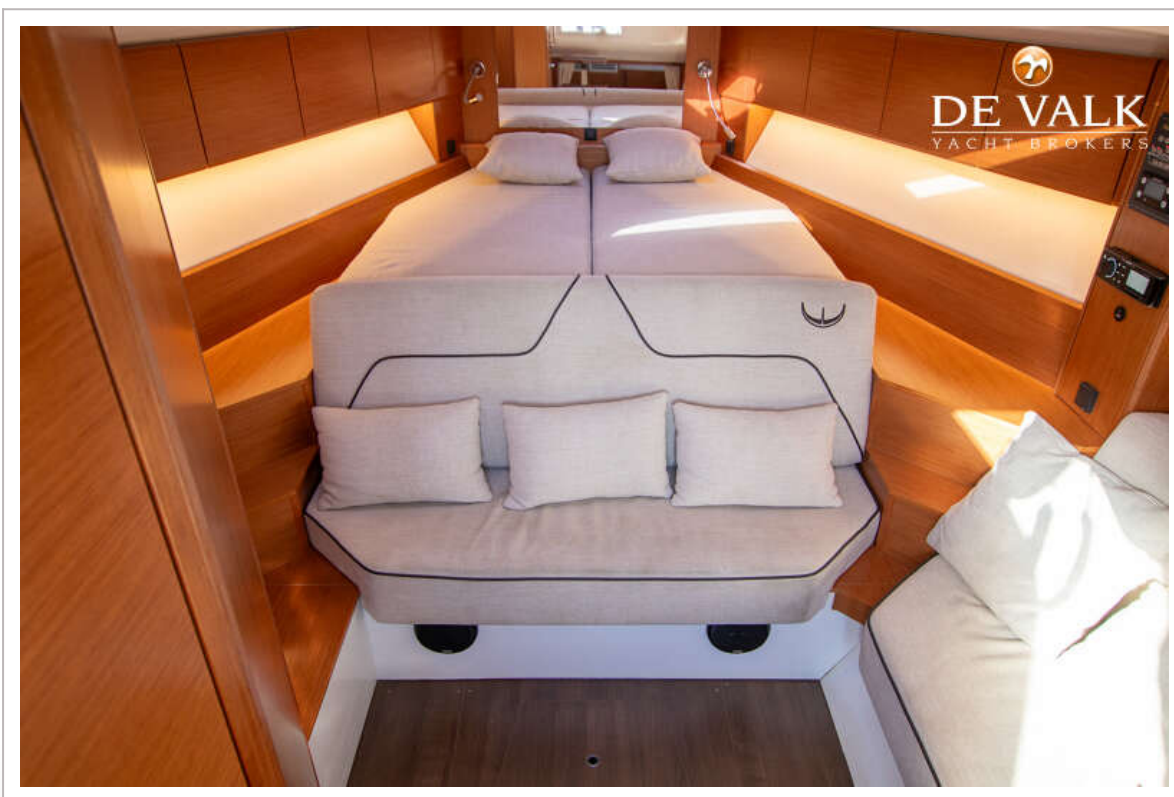




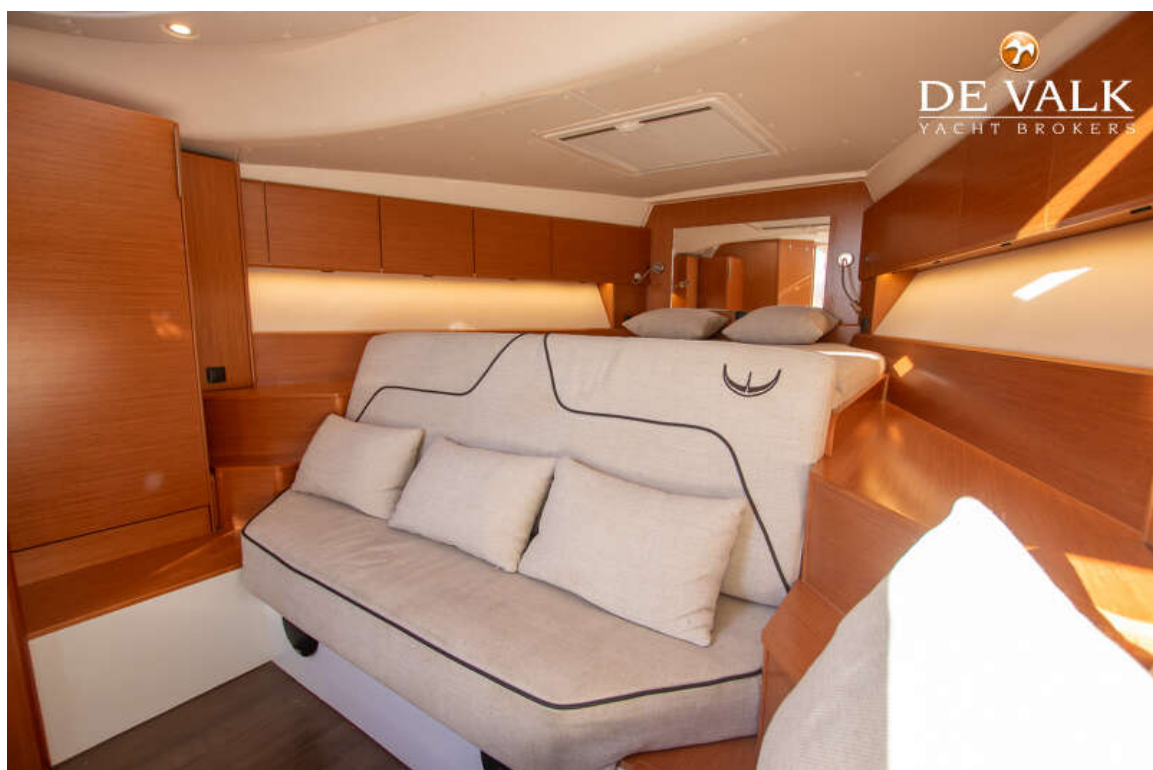
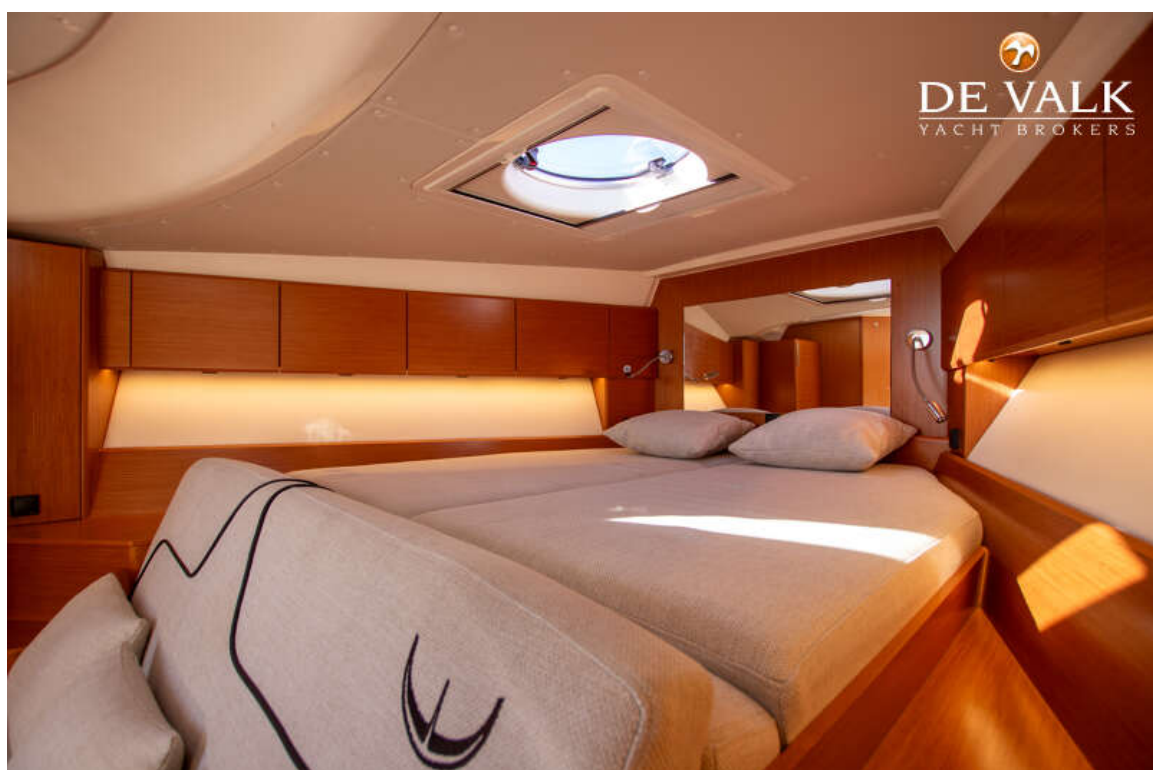




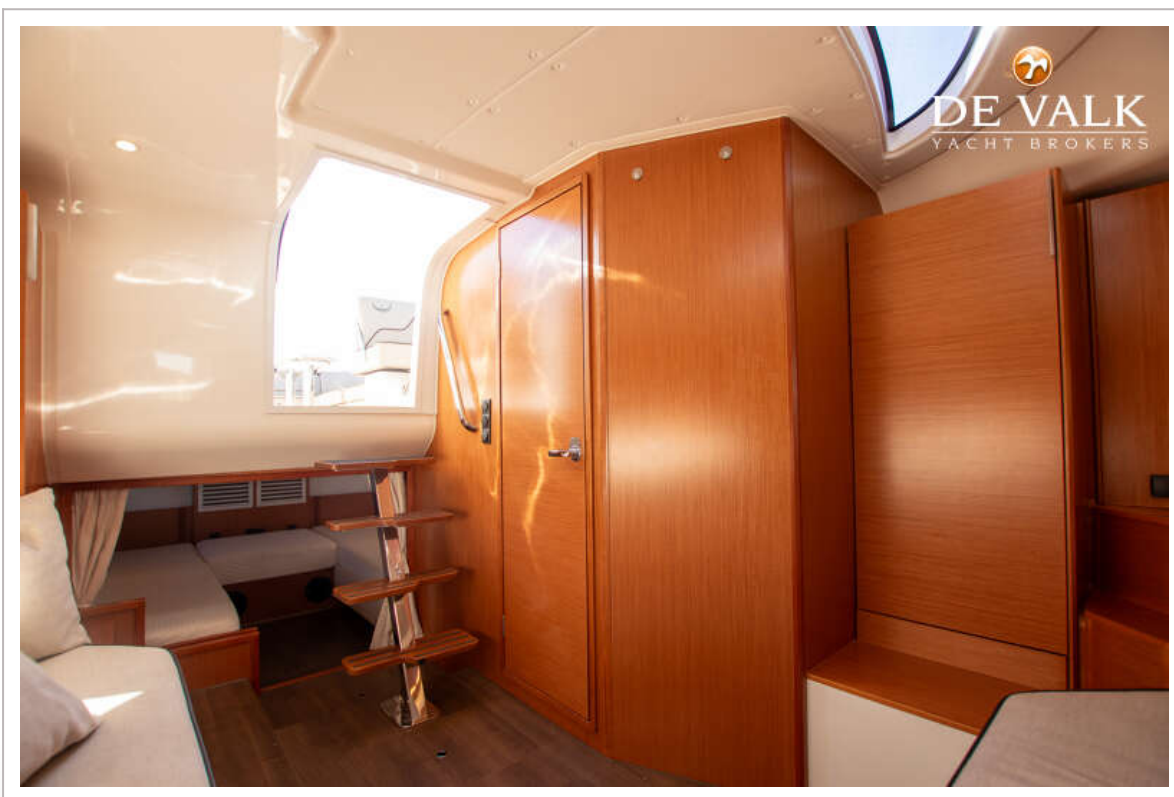
KEIZER YACHTS 42

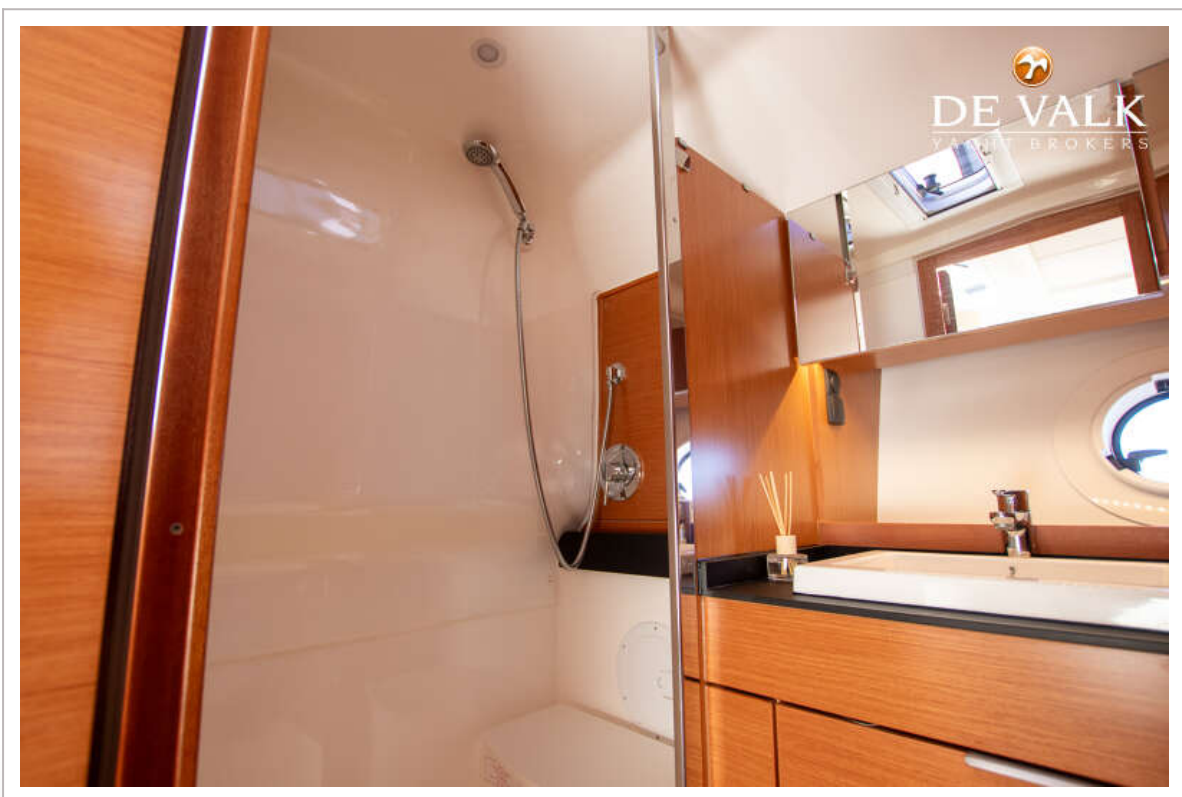
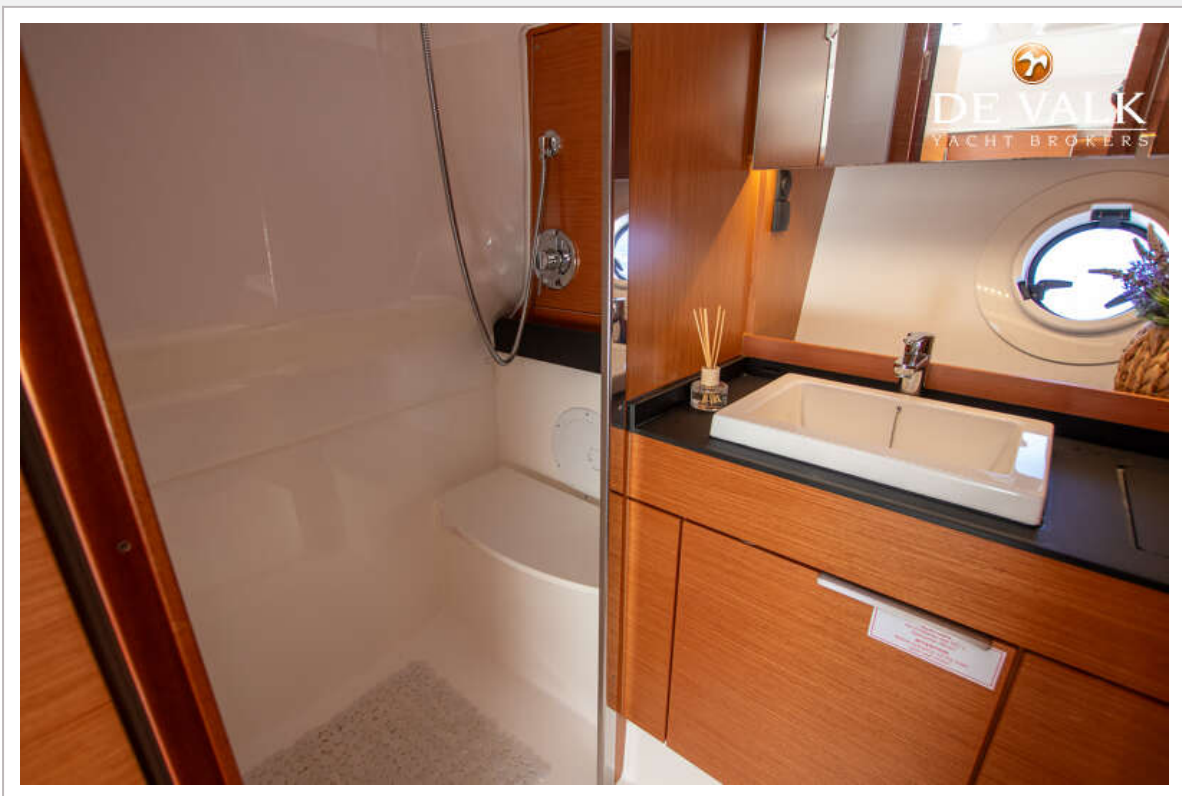


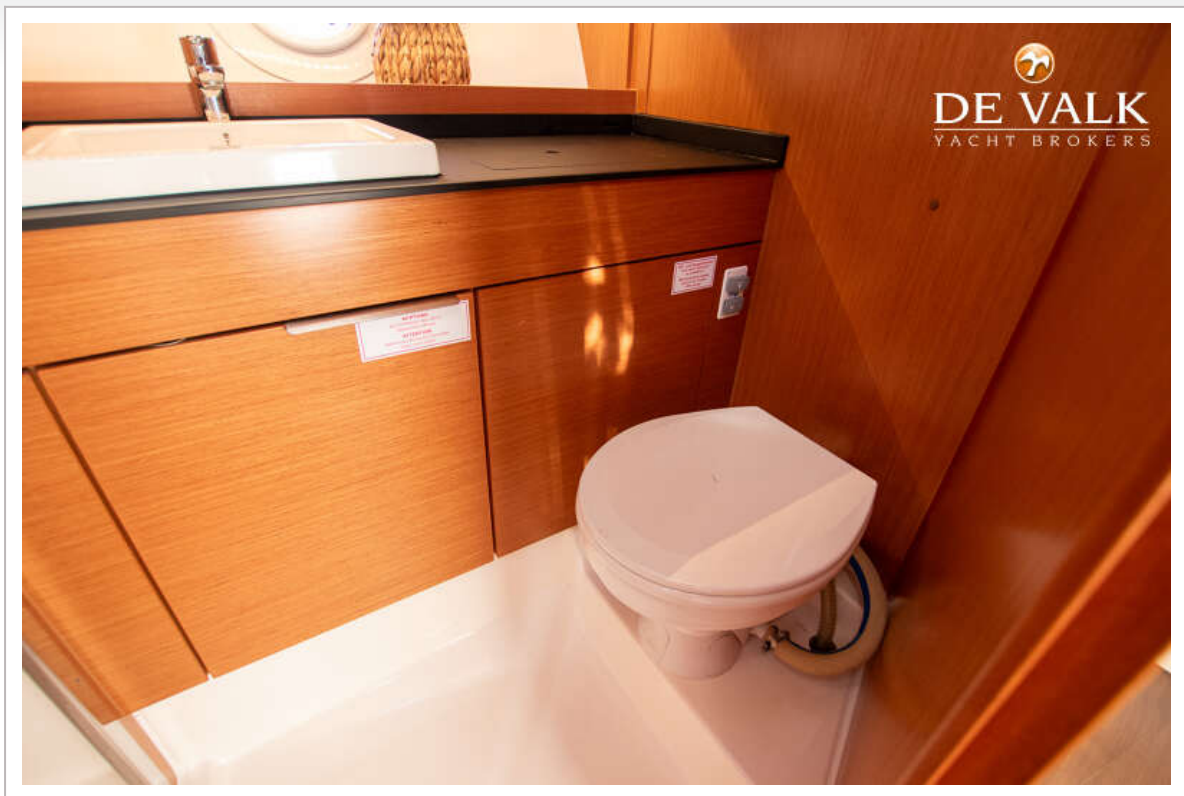
KEIZER YACHTS 42



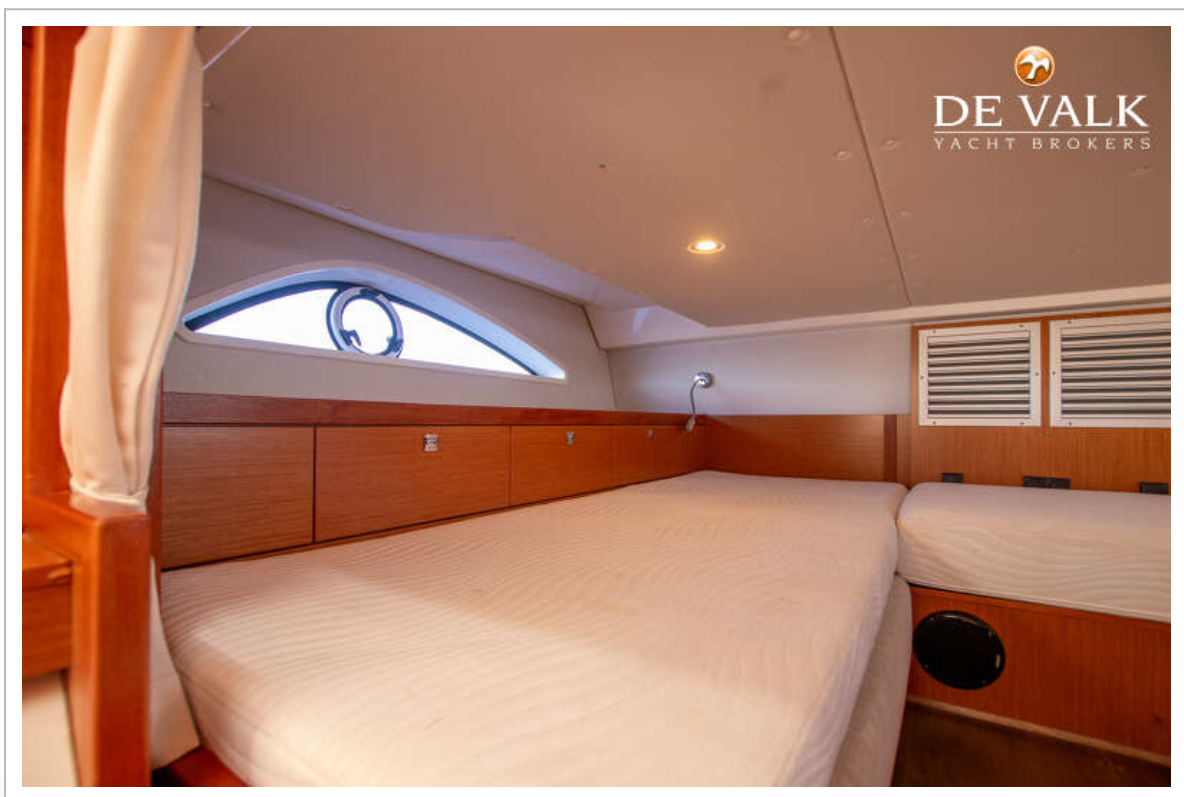
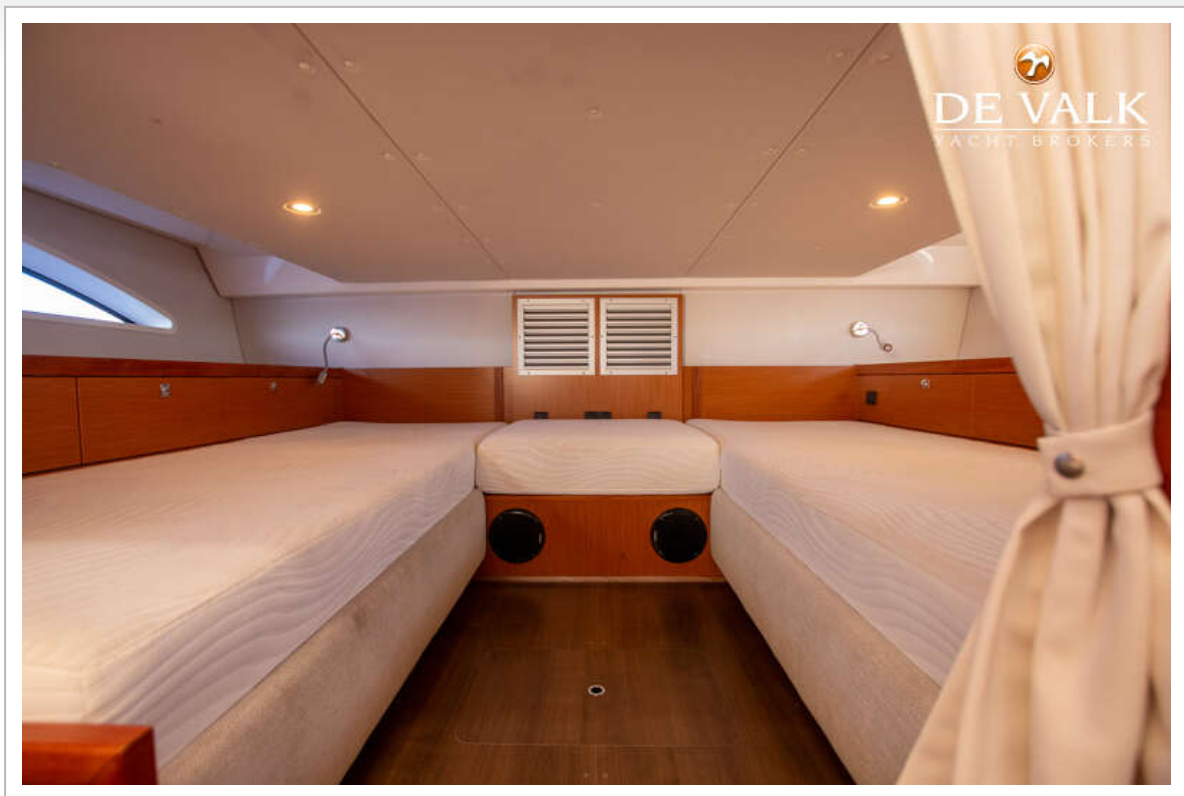
KEIZER YACHTS 42

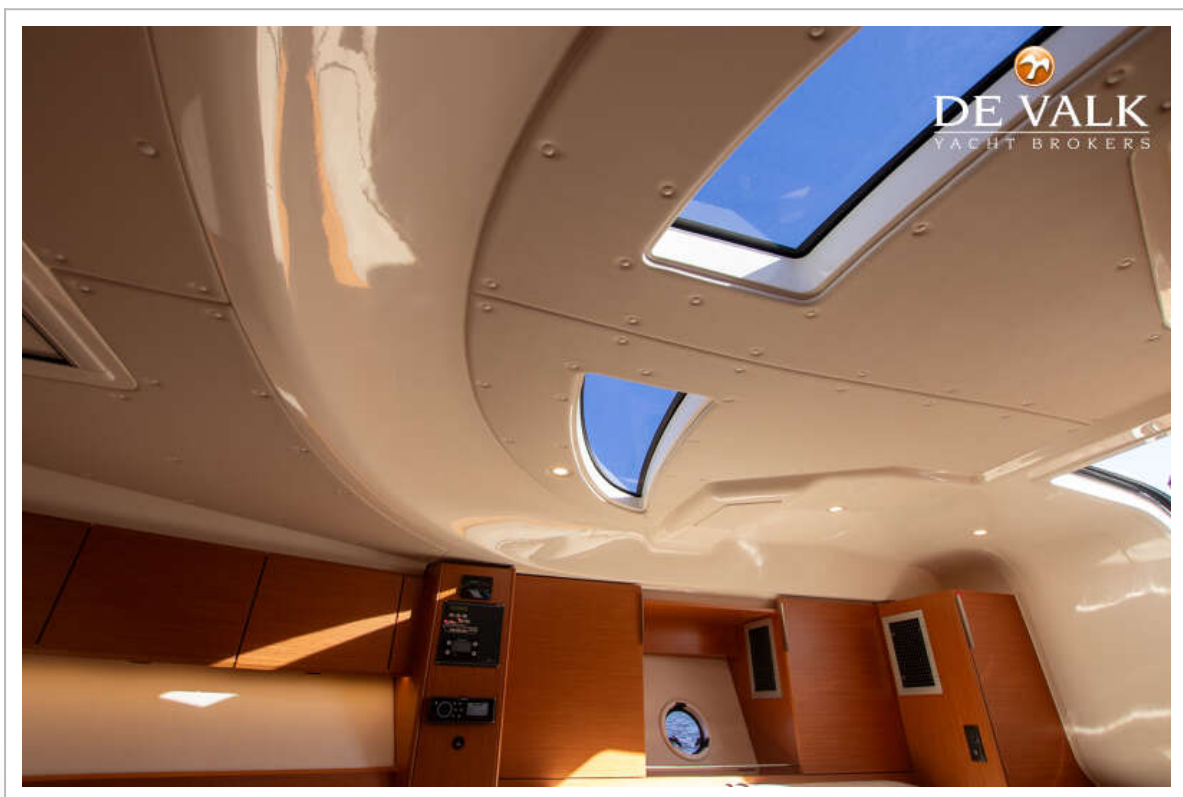


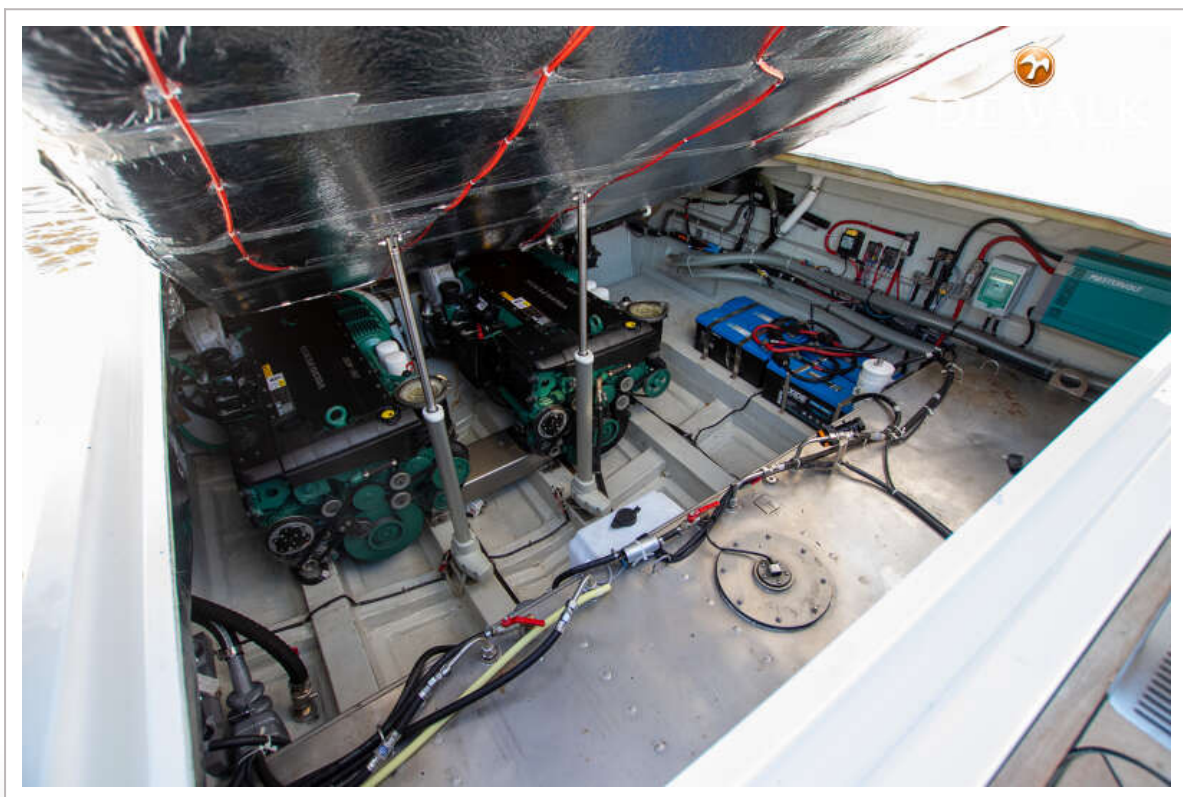




KEIZER YACHTS 42







KEIZER YACHTS 42

