



## CONAM 58 SPORT HT



## BROKER'S COMMENTS

Exclusive hardtop convertible motor yacht built and designed with Italian flair, panache and performance combined. Coming onboard you will be seduced by large lounge area at deck level where the cockpit meets the helm position under the convertible hardtop. All to surround the owners couple with that special Mediterranean Ibiza style, summer holiday feeling. Below decks you will find a three cabin layout with two bathrooms, galley and private dining area. Two modern D12 diesels will bring you anywhere you want to go. New delivery was in Belgium so this is not your typical ex- Med motor yacht.

*Marc Weijenberg*

## SPECIFICATIONS

<b>Dimensions</b>	17.67 x 4.40 x 1.20 (m)	<b>Builder</b>	Cantieri Navali Meriodonali Conam
<b>Built</b>	2004	<b>Cabins</b>	4
<b>Material</b>	GRP	<b>Berths</b>	7
<b>Engine(s)</b>	2 x Volvo Penta D12-715 diesel	<b>Hp/Kw</b>	2 x 715.00 (hp), 526.24 (kw)
<b>Asking price</b>	€ 289.000 (VAT Paid)	<b>Lying</b>	The Netherlands

## CONTACT

<b>Sales office</b>	De Valk Thuishaven	<b>Telephone</b>	+31 35 5829042
<b>Address</b>	Peperstraat 7 1411 PX Naarden NL	<b>E-mail</b>	thuishaven@devalk.nl

## DISCLAIMER

These particulars are given in good faith as supplied but cannot be guaranteed.



## GENERAL

Model	CONAM 58 SPORT HT
Type	motor yacht
LOA (m)	17,67
Beam (m)	4,40
Draft (m)	1,20
Air draft (m)	3,50
Air draft min (m)	3,90
Headroom (m)	1,90
Year built	2004
Builder	Cantieri Navali Meriodonali Conam
Country	Italy
Designer	Navali Conam
Displacement (t)	18
CE norm	A
Hull material	GRP
Hull colour	off-white
Hull shape	deep-V
Superstructure material	GRP
Deck material	GRP
Deck finish	non-skid moulded in
Cockpit deck finish	teak
Antifouling (year)	(2024)
Window frame	stainless steel
Window material	glass
Deckhatch	yes
Portholes	stainless steel
Radar arch	yes
Fuel tank (litre)	GRP 2 x 1100
Level indicator (fuel tank)	yes
Freshwater tank (litre)	GRP 1 x 700



Level indicator (freshwater)	yes
Blackwater tank (litre)	polyethylene 200
Blackwater tank extraction	pump
Wheel steering	hydraulic
More info on hull	The extended bathing platform can be lowered hydraulically to launch a dinghy/jetsky or easy for bathing.
Extra info	Headroom under the closed convertible hardtop is 1,90 mtr. There are two electric sliding windows next to the helm position.
Extra info	Height above the waterline incl. radardome is 3,50 mtr. Including antenna, navigation light etc is 3,90 mtr
Extra info	The black watertank is not in operation.

## ACCOMMODATION

Cabins	4
Berths	7
Crew cabin	Single bed with ensuite bathroom and toilette. Also can be used as large aft storage space.
Interior	Handcrafted in stylish Cherry
Floor	Carpets and wood
Open cockpit	yes
Aft deck	yes
Saloon	yes
Headroom saloon (m)	2,15 - 1,89 mtr
Sliding roof	electric
Air-conditioning	reverse cycle airco 2 x Climma (heating + airco)
Aft Cabin	2 x
Dinette	L-shape with re-sizeable table
Sliding door to cockpit	yes
Galley	yes
Countertop	granite
Sink	stainless steel 2 x
Cooker	electric Smeg 4 burner (ceramic 220v)



Oven	(220v)
Extractor	yes
Fridge	Waeco
Freezer	Weaco
Hot water system	220V 45 ltr
Water pressure system	electrical
Owners cabin	double bed
Bed length (m)	1,95 x 1,60mtr, headroom 1,84 mtr
Wardrobe	hanging/drawers/shelves
Bathroom	en suite I
Toilet	en suite
Toilet system	electric Tecma
Wash basin	in the bathroom
Shower	en suite
Guest cabin 1	twin single
Bed length (m)	1,90 x 0,78mtr, headroom: 1,87 mtr
Wardrobe	hanging and shelves
Bathroom	shared II
Toilet	shared
Toilet system	electric Tecma
Wash basin	in the bathroom
Shower	shared
Guest cabin 2	twin single
Bed length (m)	1,90 x 0,78mtr, headroom: 1,87 mtr
Wardrobe	hanging and shelves
Wet bar	In cockpit area with washbasin, electric grill and fridge
Extra info	Dishwasher space available and connections installed
Extra info	Lots of under bed storage areas. A safe has been built in one of the closets. The owner cabin has slatted mattresses.

## MACHINERY



No of engines	2
Make	Volvo Penta
Type	D12-715
HP	715
kW	526.24
Fuel	diesel
Year installed	2004
Maximum speed (kn)	30
Cruising speed (kn)	8
Engine hours	1720
Engine cooling system	freshwater heat exchanger
Drive	shaft
Engine controls	electrical Volvo Penta EVC electronic
Gearbox	hydraulic
Bowthruster	electric
Sternthruster	electric
Exhaust	watercooled
Propeller type	fixed
Propeller blades	4
Propeller shaft material	stainless steel
Shaft lubrication	water
Manual bilge pump	yes
Electric bilge pump	3 x
Bilge alarm	yes
Electrical installation	12/24/220v
Generator	silent separator Kohler 12kW
Running hours generator	2010
Start battery	2 x
Service battery	10 x 100ah (2020)
Generator battery	1 x
Battery monitor	yes
Battery charger	Mastervolt 24v/100amp (2020)



Inverter	Mastervolt 24v/2500watt/220v (2020)
Shorepower	with cable
Trimtabs	Bennett (hydraulic)

## NAVIGATION

Compass	Urania
Electric compass	via autopilot
Depth sounder	Raymarine (2024)
VHF	Furuno HS2721
Autopilot	Furuno Navpilot
Radar	Raymarine Quantum 2 (2024)
GPS	Raymarine
Plotter	2 x Raymarine Axiom 12" Multi-function displays (2024)
Electronic chart(s)	Navionics
AIS transponder	Emtrak Class B (2023)
Camera	Raymarine (2023) with stern view
Navigation lights	yes
Searchlight	(fixed position)

## EQUIPMENT

Fixed windscreen	yes
Fixed hardtop	electric sliding roof section
Cockpit cover	annex Bimini (2023)
Cockpit cushions	including sunbathing cushions for and aft
Cockpit table	yes
Bathing platform	hydraulic lowering section
Boarding ladder	stainless steel
Transom door	stainless steel
Gangway	hydraulic Besenzoni (2,90mtr)
Deck shower	hot + cold
Anchor	Bruce 20kg



Anchor chain	100 mtr
Anchor 2	Brittany
Windlass	Leopard 1500w
Capstan	2 x Lofrans 700w (aft)
Sea railing	stainless steel
Grab rail (superstructure)	stainless steel
Pushpit	yes
Pulpit	yes
Wiper	2 x
Horn	yes
Fenders	yes
Mooring lines	yes
TV	yes
Radio-cd player	yes
Cockpit speakers	yes
Speakers in salon	yes
Speakers in cabin	yes
Clock - barometer	full set
Fire extinguisher	2 x
Latest extinguisher survey	2023
Extinguisher in engine room	2 x (2019)
Extra info	Instead of an opening garage there is a wide lowering bathing platform to launch and store your bigger dinghy or jet ski without height restrictions. Added bonus is the extra crew-cabin annex storage space plus the engine room is much larger and easier to access than on a similar yacht with garage.
Extra info	The convertible hardtop in combination with multi-functional aft canopy/cover will give you a several options to open up or close of the lounge areas.





# CONAM 58 SPORT HT



# CONAM 58 SPORT HT





# CONAM 58 SPORT HT

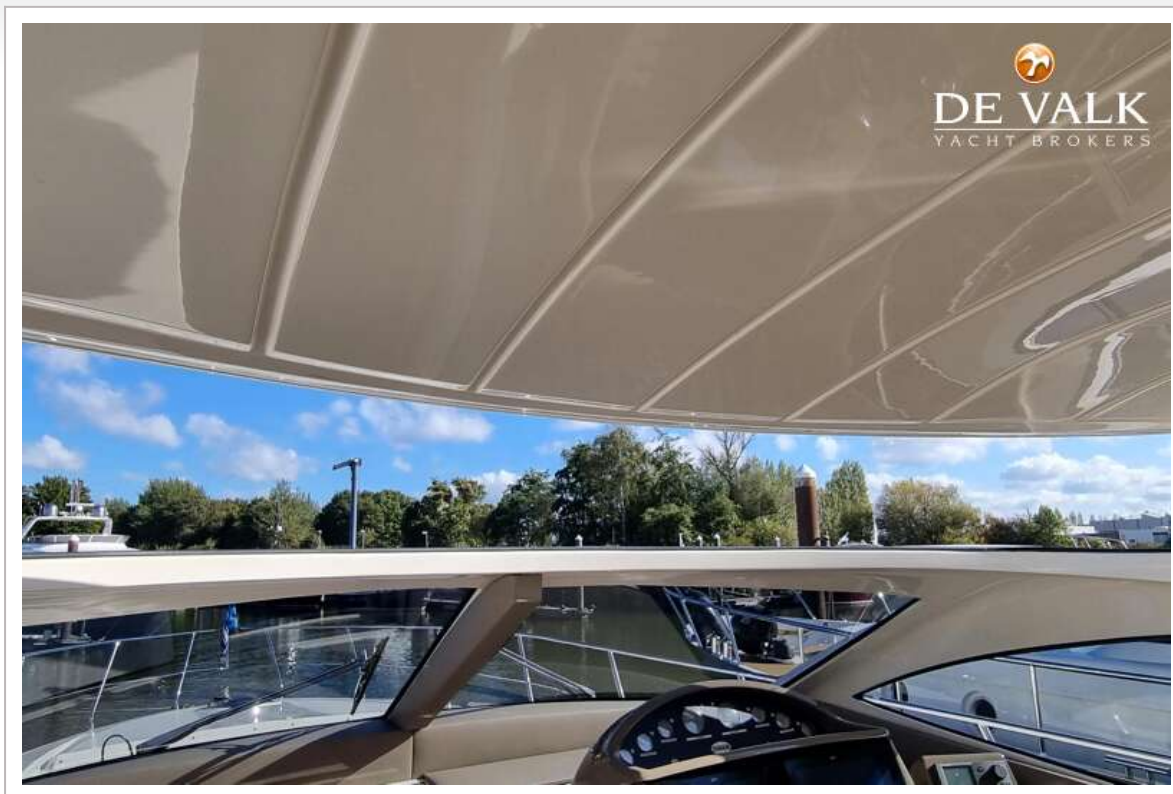


# CONAM 58 SPORT HT

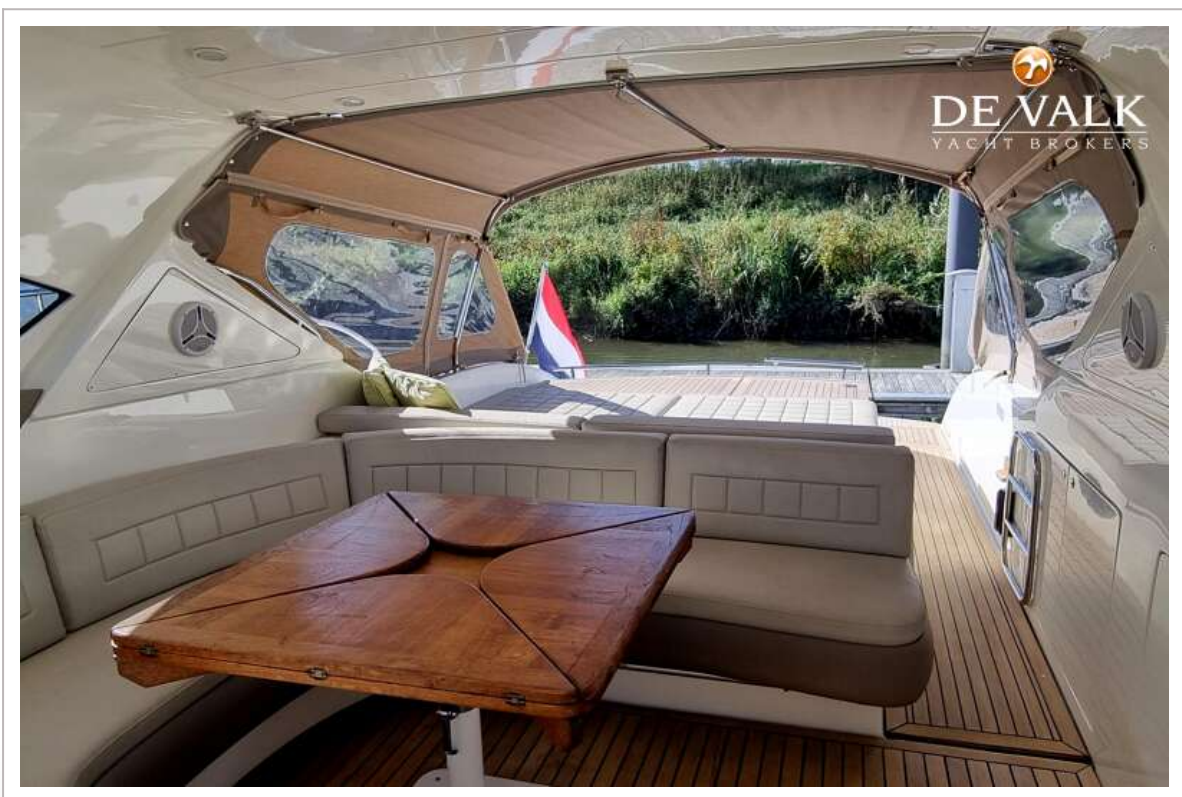




# CONAM 58 SPORT HT



# CONAM 58 SPORT HT



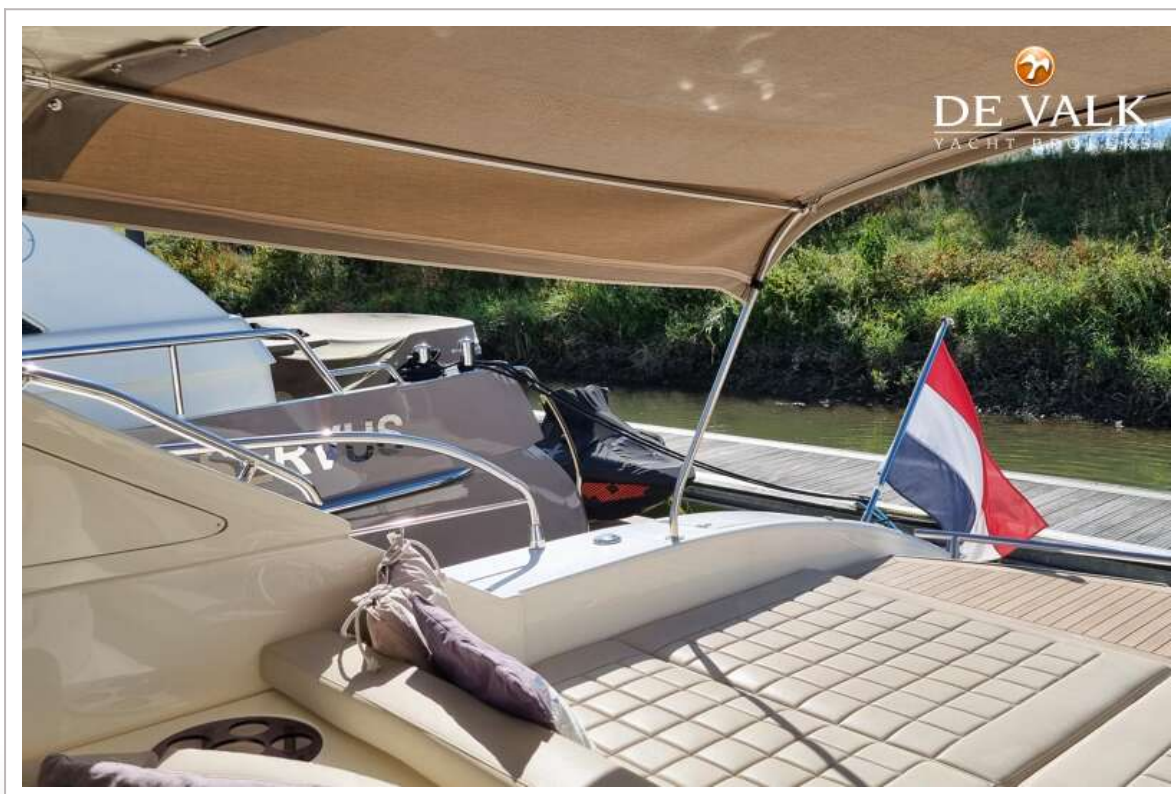


# CONAM 58 SPORT HT



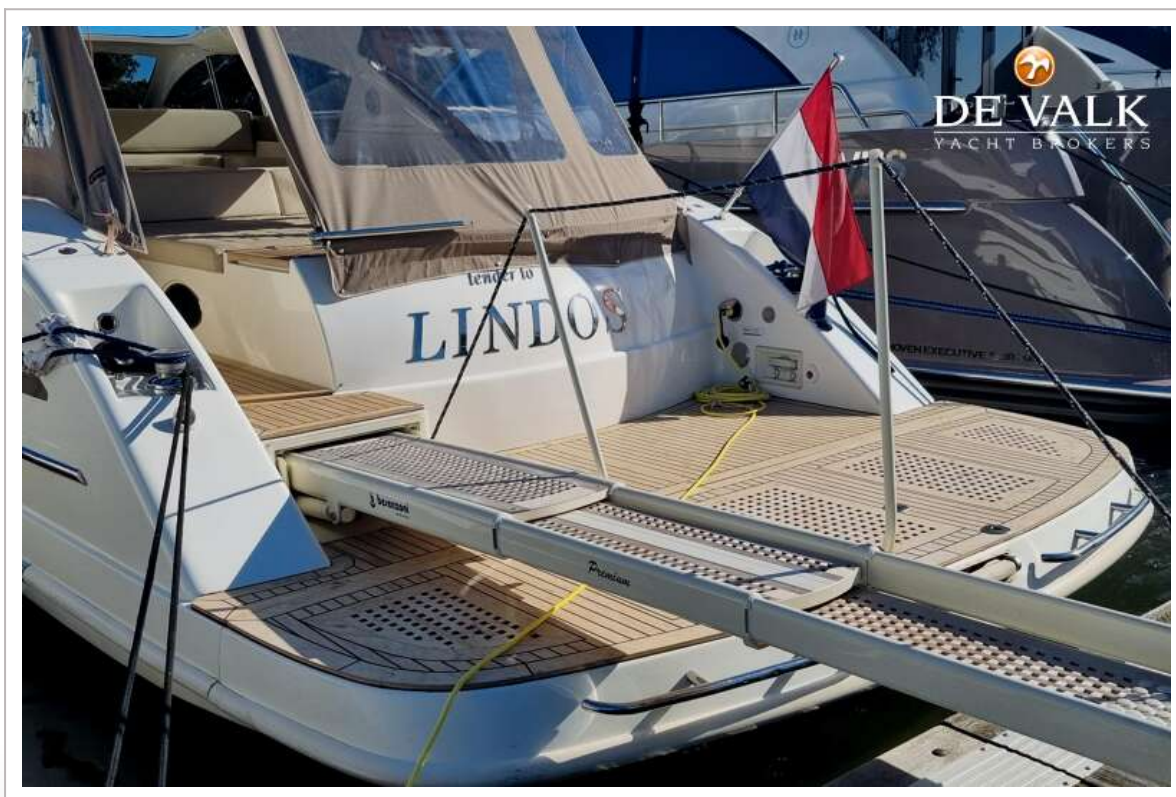


# CONAM 58 SPORT HT





# CONAM 58 SPORT HT

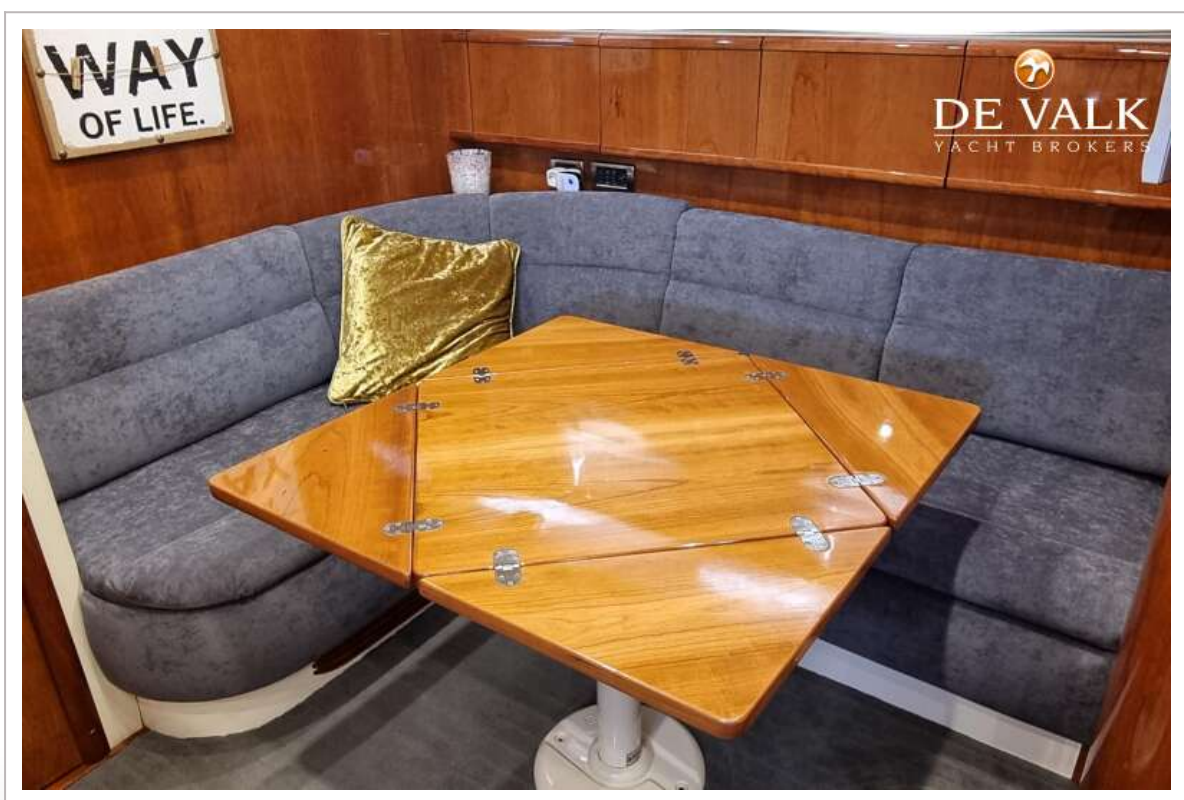




# CONAM 58 SPORT HT

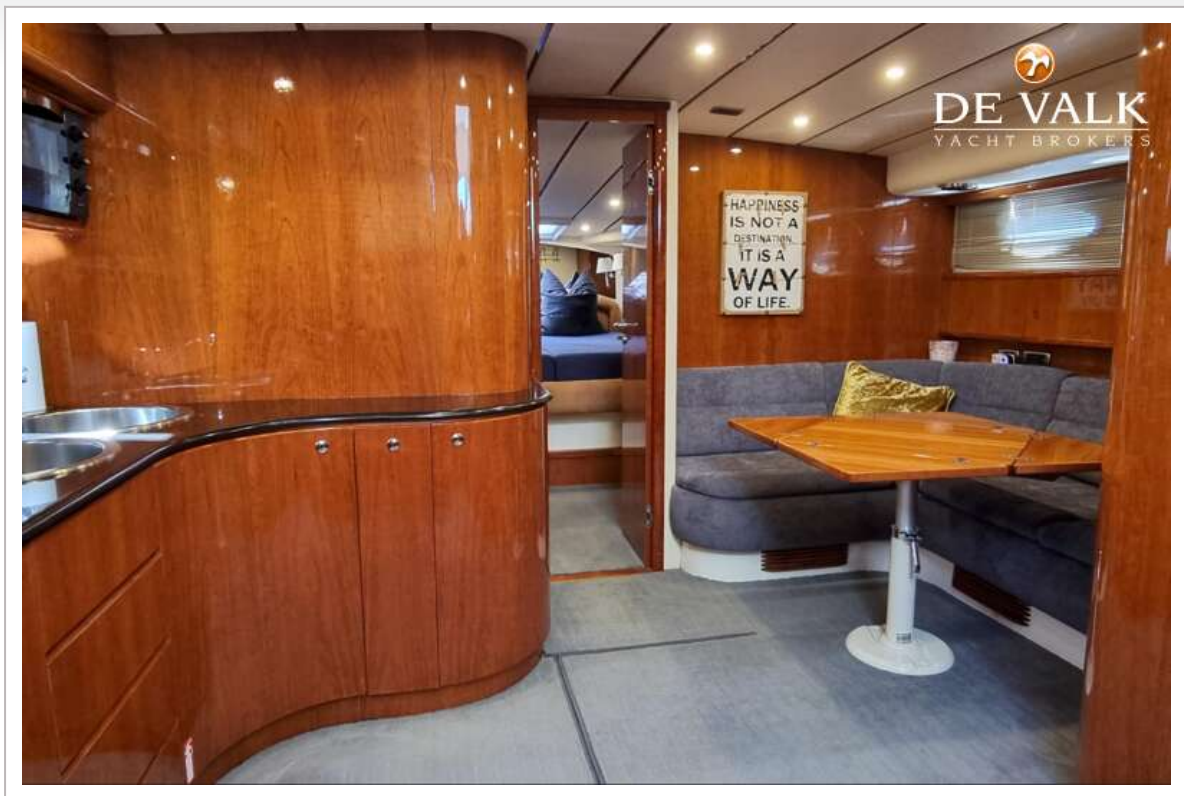


# CONAM 58 SPORT HT





# CONAM 58 SPORT HT



# CONAM 58 SPORT HT

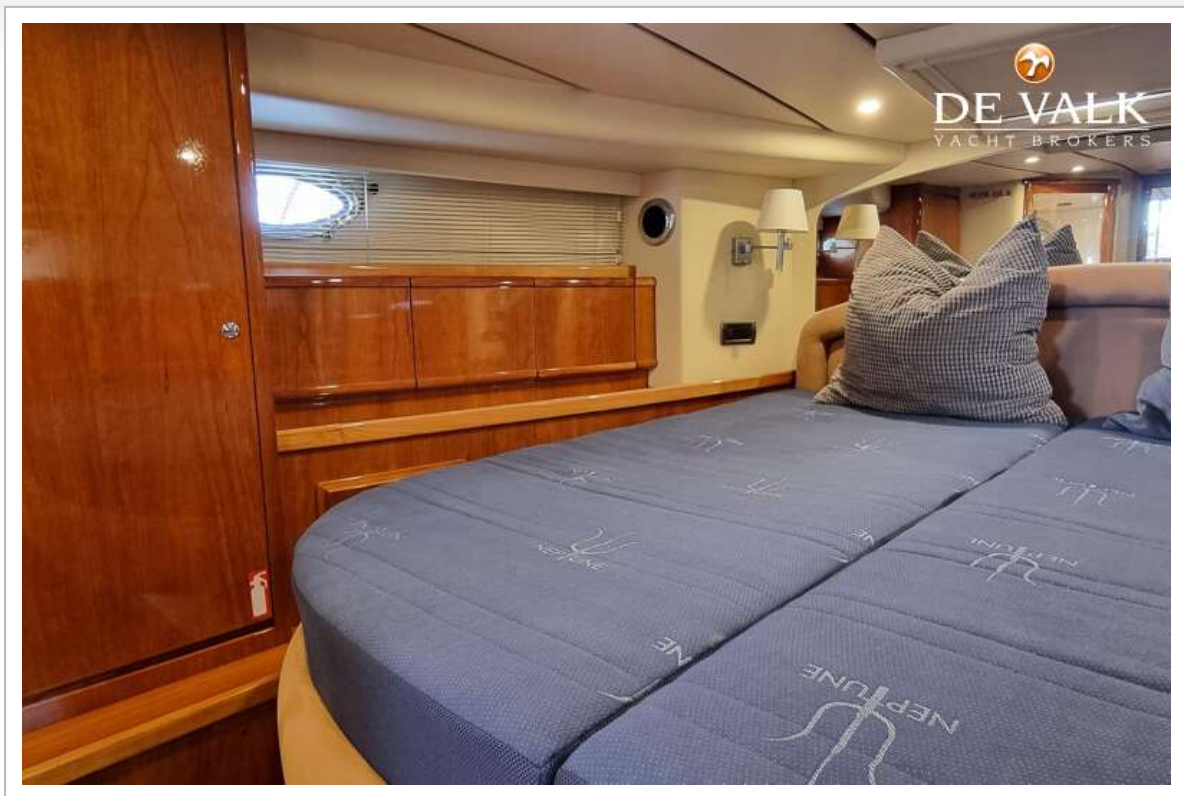




# CONAM 58 SPORT HT

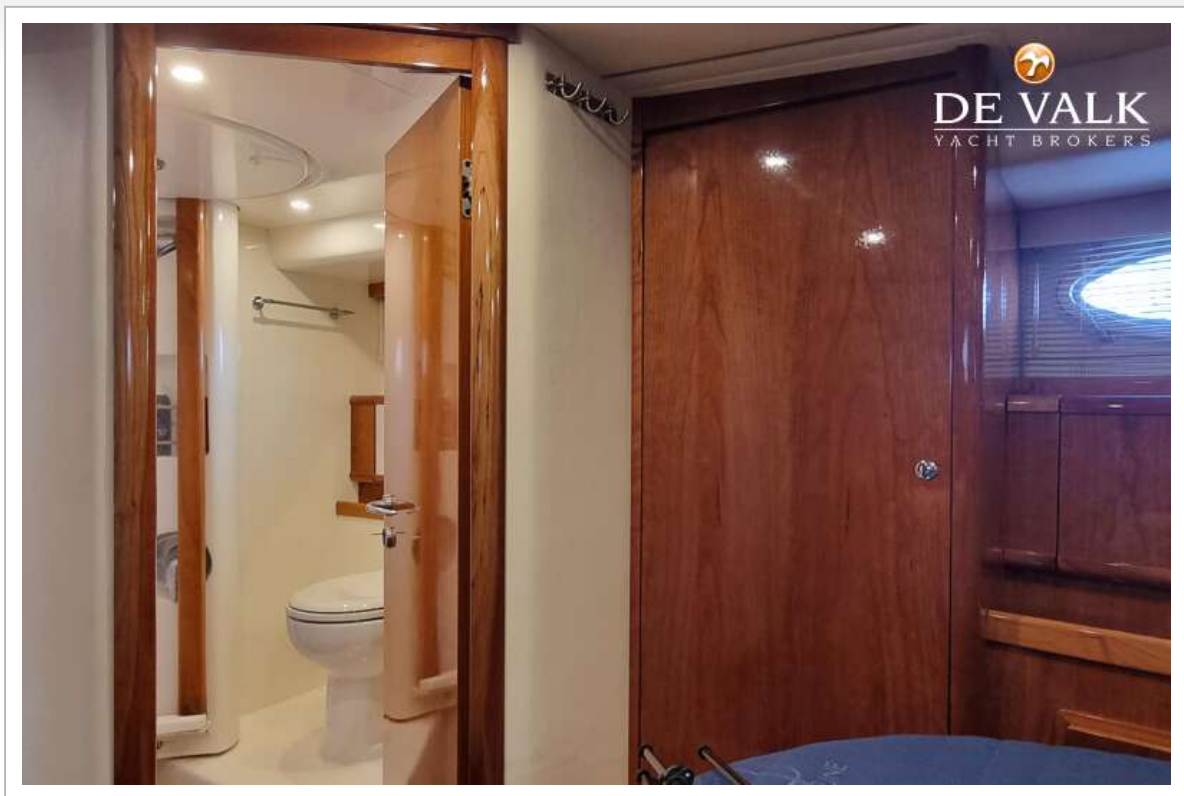


# CONAM 58 SPORT HT



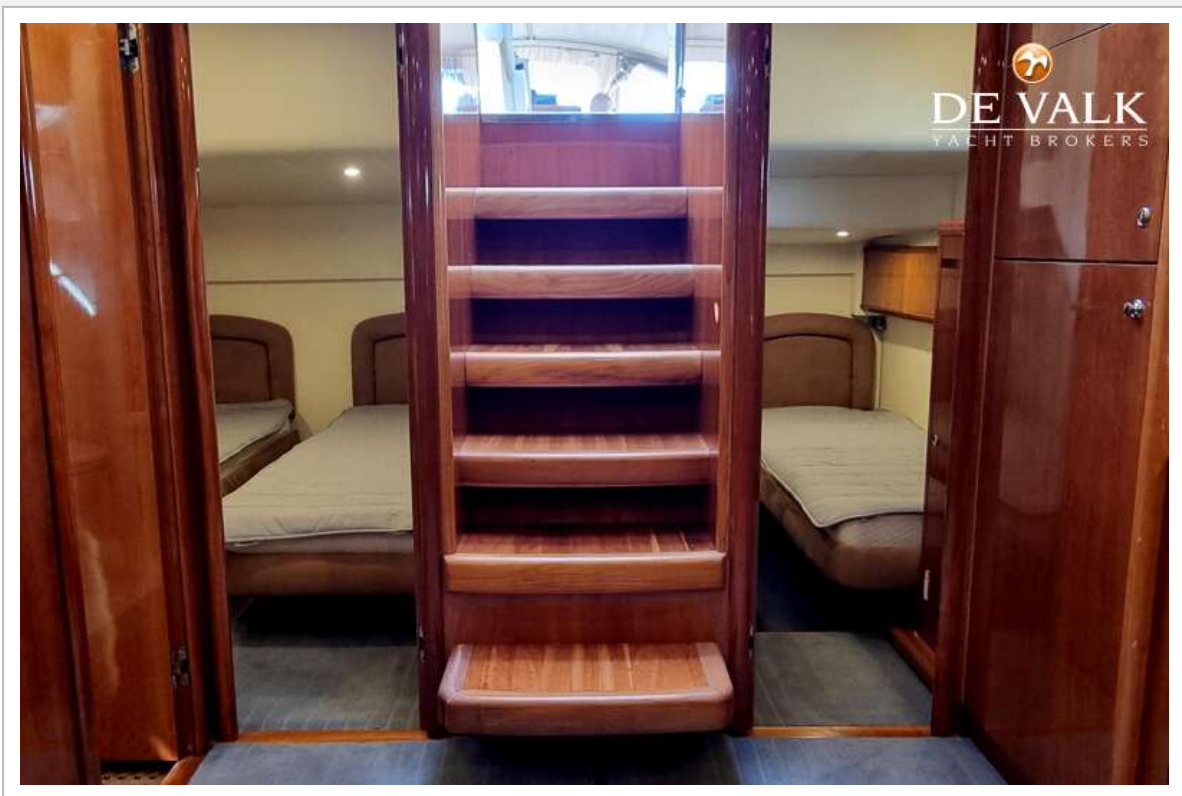


# CONAM 58 SPORT HT

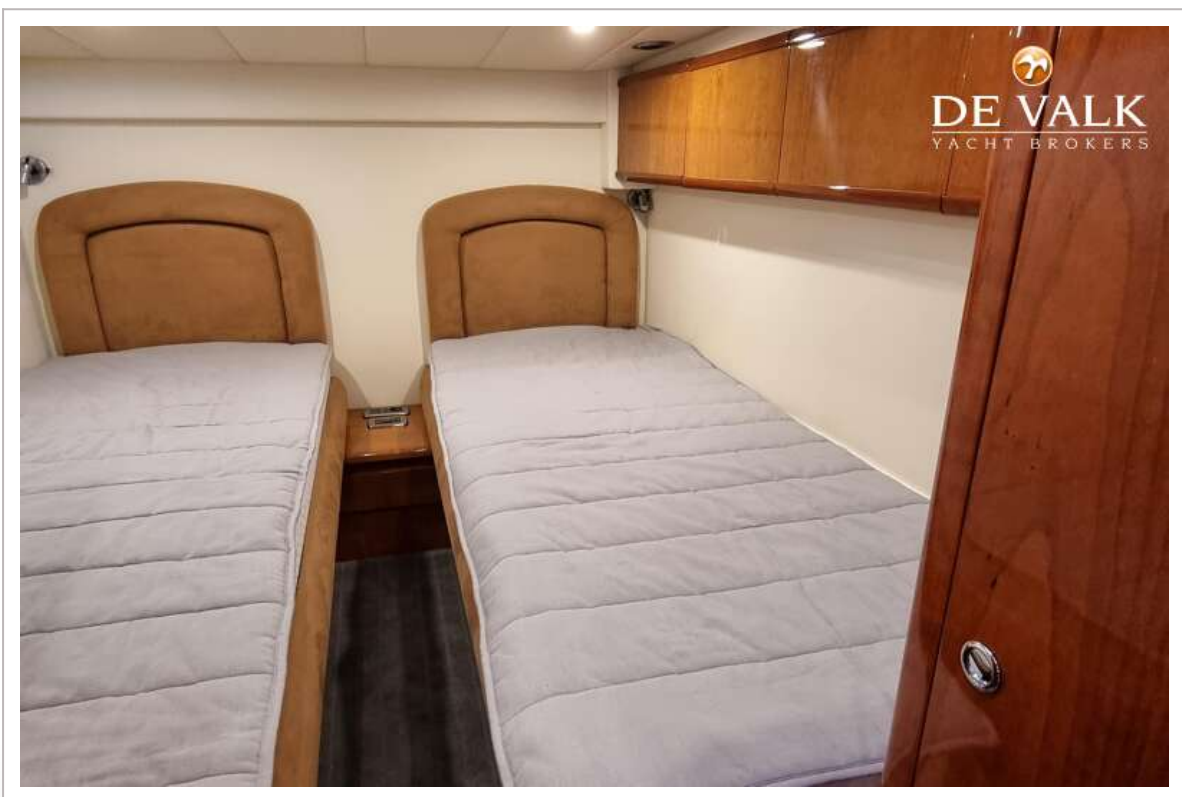
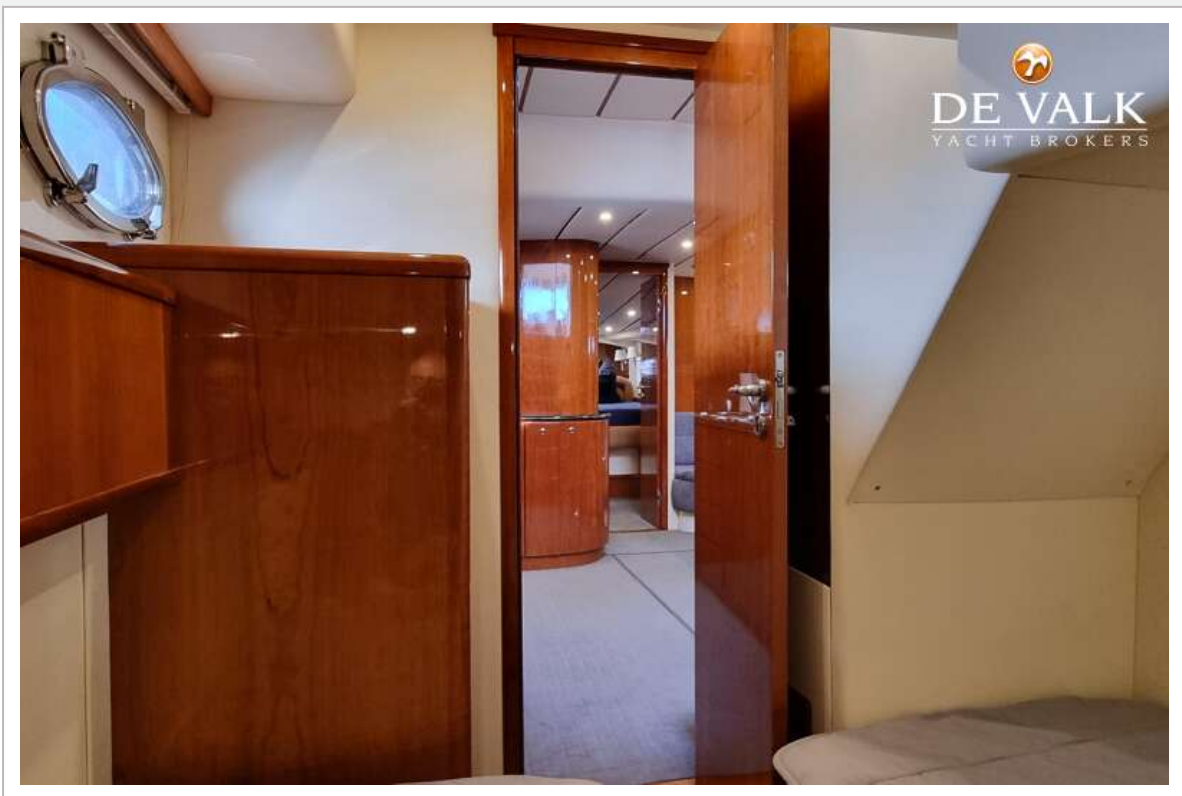




# CONAM 58 SPORT HT



# CONAM 58 SPORT HT

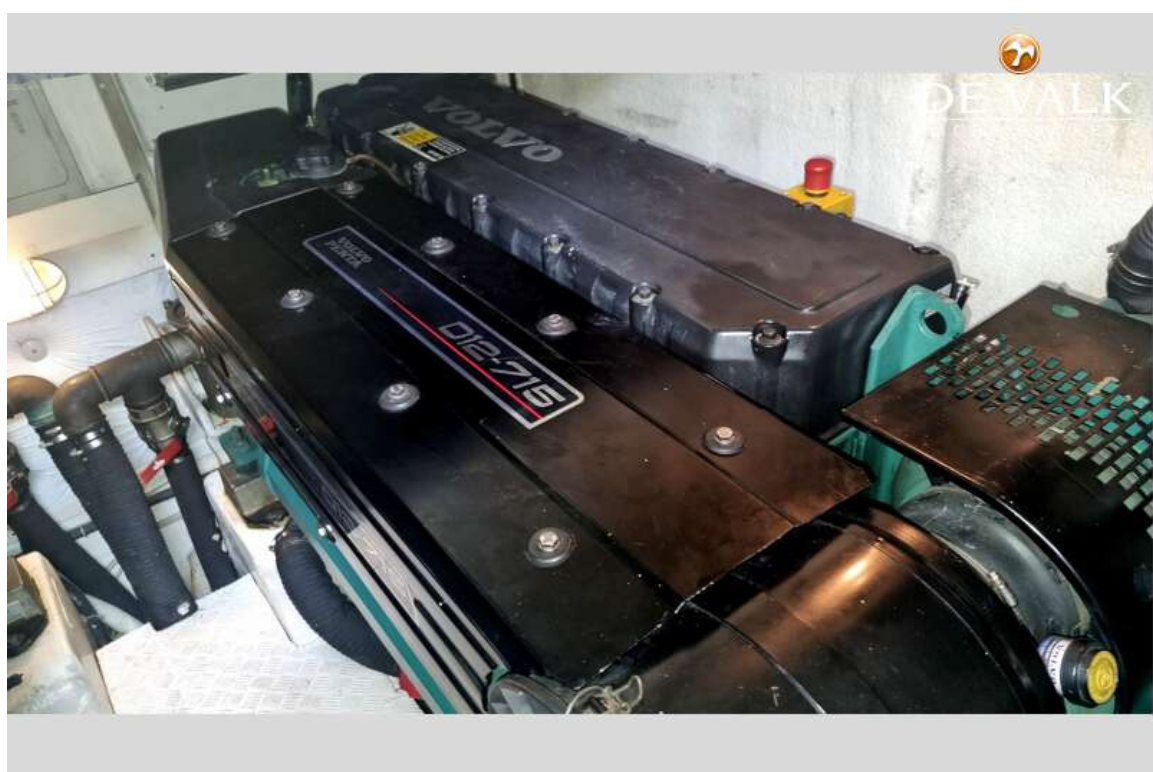
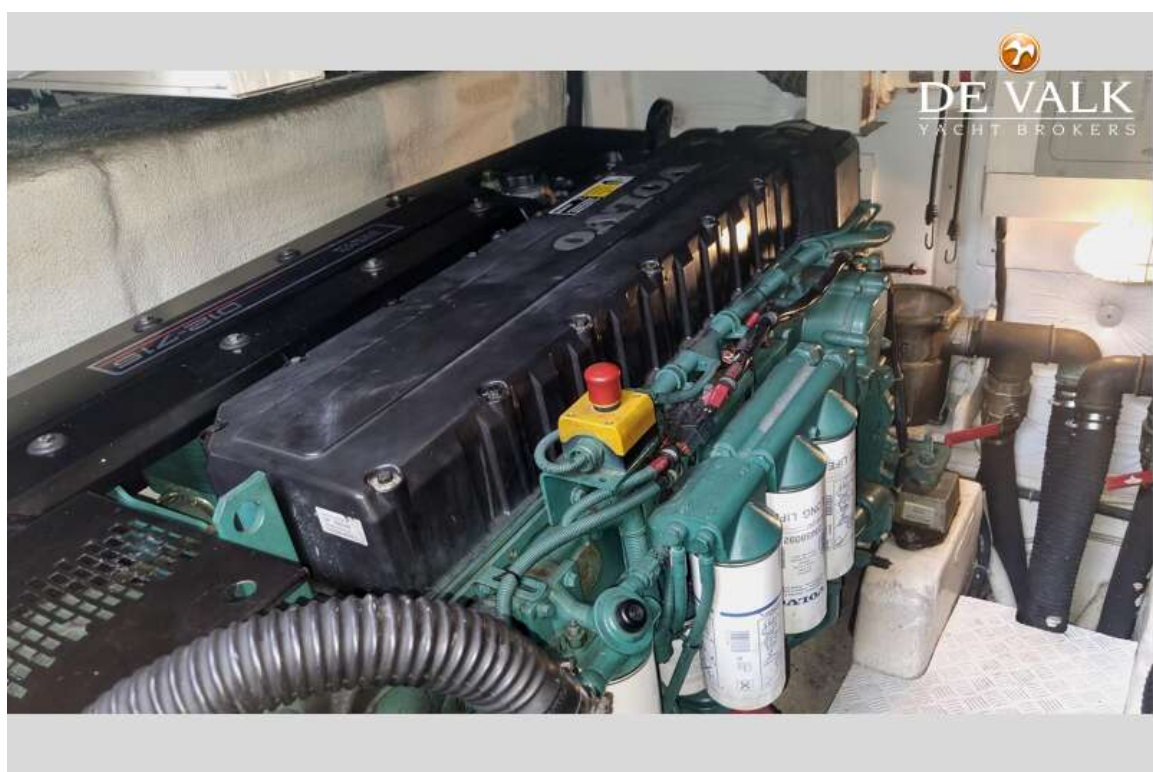


# CONAM 58 SPORT HT

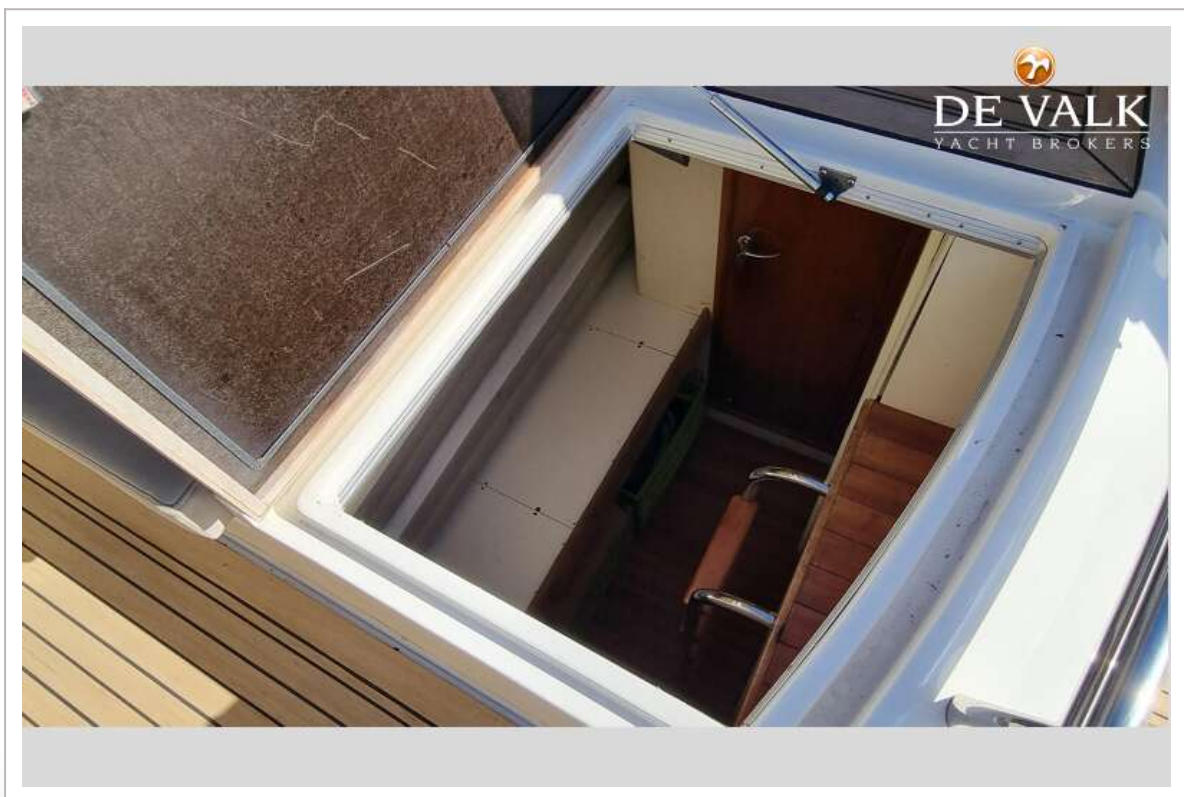
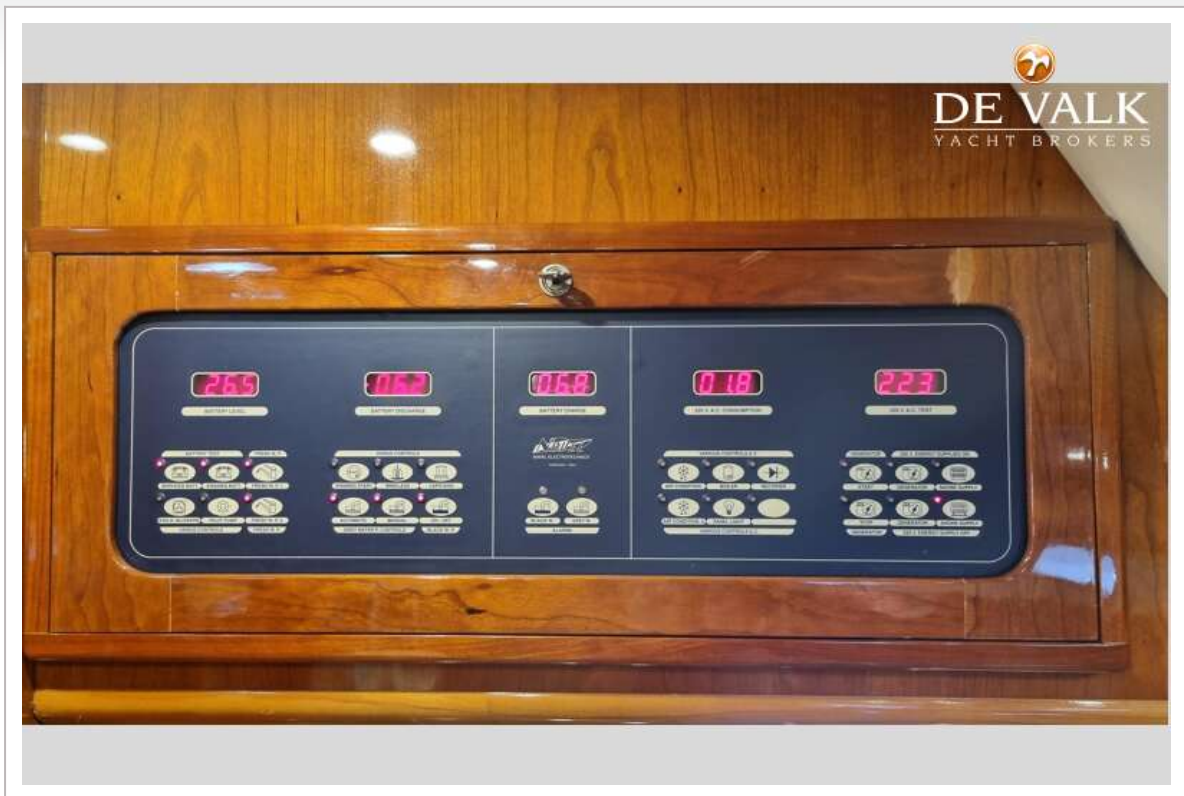




# CONAM 58 SPORT HT



# CONAM 58 SPORT HT





# CONAM 58 SPORT HT

