



DE VALK  
YACHT BROKERS



## JEANNEAU PRESTIGE 36



DE VALK  
YACHT BROKERS

# JEANNEAU PRESTIGE 36

## BROKER'S COMMENTS

The Jeanneau Prestige 36 combines sporty performance with comfortable onboard living. Powered by twin Volvo Penta KAMD44P diesel engines (2 x 260 hp, approx. 960 engine hours), she is equipped with a bow thruster and a spacious flybridge. The layout offers two cabins and four berths. In recent years, she has benefited from numerous upgrades, including new bow thruster, new batteries, new battery charger, overhauled turbochargers, professionally treated teak deck and various technical improvements. Equipped with Raytheon navigation, heating and a spacious cockpit with new cushions.

*Mark Hesselmans*

## SPECIFICATIONS

<b>Dimensions</b>	11.60 x 3.84 x 0.93 (m)	<b>Builder</b>	
<b>Built</b>	2001	<b>Cabins</b>	2
<b>Material</b>	GRP	<b>Berths</b>	4
<b>Engine(s)</b>	2 x Volvo Penta KAMD44P diesel	<b>Hp/Kw</b>	2 x 260.00 (hp), 191.36 (kw)
<b>Asking price</b>	€ 119.000 (VAT Paid)	<b>Lying</b>	elsewhere / Not at sales office

## CONTACT

<b>Sales office</b>	De Valk Loosdrecht B.V.	<b>Telephone</b>	+31 (0)35 582 90 30
<b>Address</b>	't Breukeleveense Meentje 6 1231LM Loosdrecht / Wijdmeren NL	<b>E-mail</b>	loosdrecht@devalk.nl

## DISCLAIMER

These particulars are given in good faith as supplied but cannot be guaranteed.



# JEANNEAU PRESTIGE 36

## GENERAL

<b>Model</b>	JEANNEAU PRESTIGE 36
<b>Type</b>	motor yacht
<b>LOA (m)</b>	11,60
<b>Beam (m)</b>	3,84
<b>Draft (m)</b>	0,93
<b>Air draft (m)</b>	4,20
<b>Year built</b>	2001
<b>Country</b>	France
<b>CE norm</b>	B
<b>Hull material</b>	GRP
<b>Hull colour</b>	white
<b>Hull shape</b>	V-shaped hull
<b>Superstructure material</b>	GRP
<b>Rubbing strake</b>	stainless steel
<b>Deck material</b>	GRP
<b>Deck finish</b>	teak Treated every year
<b>Superstructure deck finish</b>	teak Teak on flybridge
<b>Antifouling (year)</b>	2023
<b>Window frame</b>	stainless steel
<b>Window material</b>	glass
<b>Deckhatch</b>	yes
<b>Portholes</b>	4x
<b>Flybridge</b>	yes
<b>Fuel tank (litre)</b>	stainless steel 2 x 400L
<b>Level indicator (fuel tank)</b>	yes
<b>Freshwater tank (litre)</b>	polyethylene 400 L
<b>Level indicator (freshwater)</b>	yes
<b>Blackwater tank (litre)</b>	?
<b>Inside helm position</b>	yes
<b>Flybridge helm position</b>	hydraulic



# JEANNEAU PRESTIGE 36

## ACCOMMODATION

Cabins	2
Berths	4
Interior	cherry
Floor	carpet
Saloon	yes
Heating	diesel ducted hot air
Dinette	yes
Sliding door to cockpit	yes
Galley	yes
Countertop	yes
Sink	stainless steel
Cooker	calor gas 4 cooking rings
Microwave	yes
Fridge	Electric 130L
Freezer	10-15L
Hot water system	220V
Water pressure system	electrical
Owners cabin	French bed
Wardrobe	hanging and shelves
Bathroom	en suite
Toilet	en suite
Toilet system	electric
Wash basin	in the bathroom
Shower	en suite
Guest cabin 1	twin single
Wardrobe	hanging

## MACHINERY

No of engines	2
Make	Volvo Penta



# JEANNEAU PRESTIGE 36

Type	KAMD44P
HP	260
kW	191.36
Fuel	diesel
Year installed	2001
Engine hours	960
Engine cooling system	freshwater heat exchanger
Drive	shaft
Engine controls	electrical Volvo Penta
Bowthruster	electric
Gearbox	hydraulic
Exhaust	watercooled
Propeller type	fixed
Propeller shaft material	stainless steel
Shaft lubrication	water
Electric bilge pump	X 3
Electrical installation	12V/220V
Batteries	4 x 105 Ah
Bowthruster battery	2 x 105 Ah
Battery monitor	yes
Battery charger	12V/50A
Inverter	yes
Shorepower	with cable Cable length 10m

## NAVIGATION

Compass	yes
Depth sounder	Raytheon
Log	yes
Fish finder	Furuno lcd suv don CS-600
VHF	Ocean RO 3050
VHF handheld	yes



Autopilot	Raytheon
Rudder angle indicator	yes
Radar	Raytheon RC70
GPS	Raytheon
Plotter	Raytheon chartplotter RC425
Navigation lights	LED

## EQUIPMENT

Cockpit cover	yes
Cockpit cushions	New in 2024
Cockpit table	yes
Bathing platform	yes
Boarding ladder	stainless steel
Transom door	yes
Deck shower	yes
Anchor	Manual, can be electrically connected
Anchor chain	yes
Windlass	manual Windlass engine needs to be mounted.
Sea railing	stainless steel
Grab rail (superstructure)	stainless steel
Wiper	2x
Horn	electric
Fenders	yes
Mooring lines	yes
TV	3x Salora
Radio-cd player	yes
Cockpit speakers	yes
Speakers in salon	yes



# JEANNEAU PRESTIGE 36



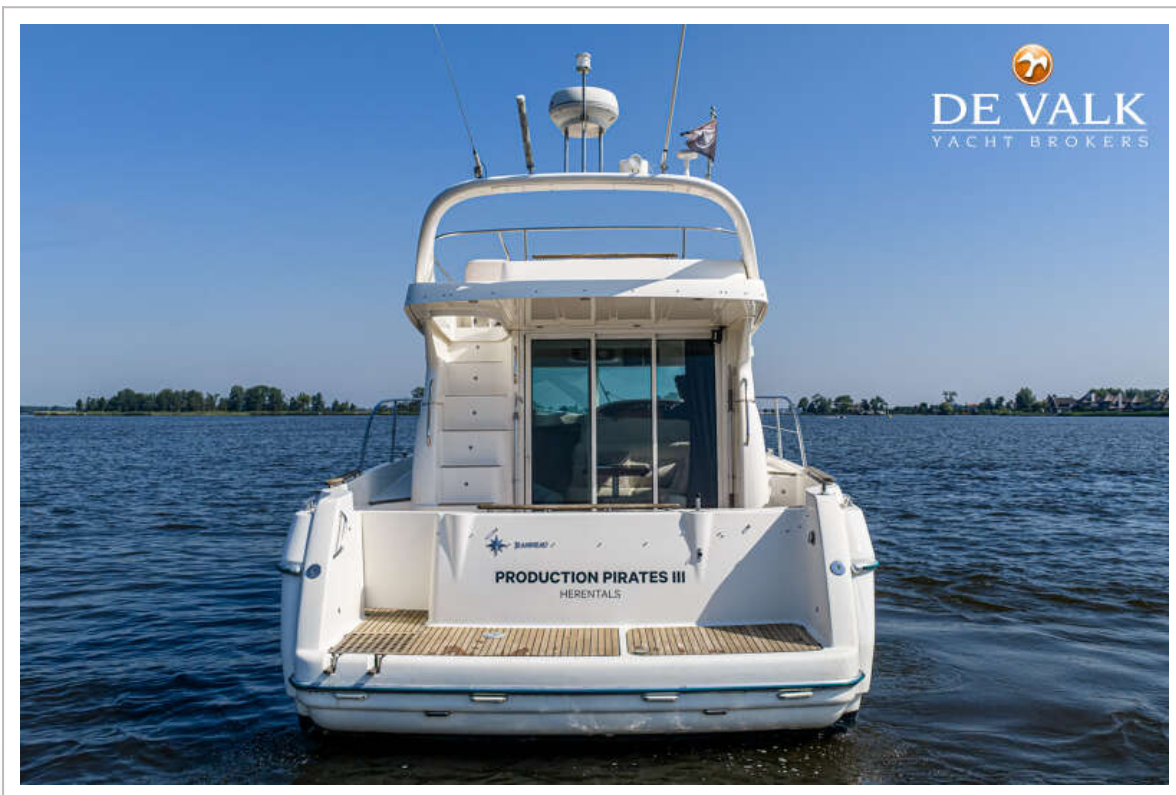
# JEANNEAU PRESTIGE 36



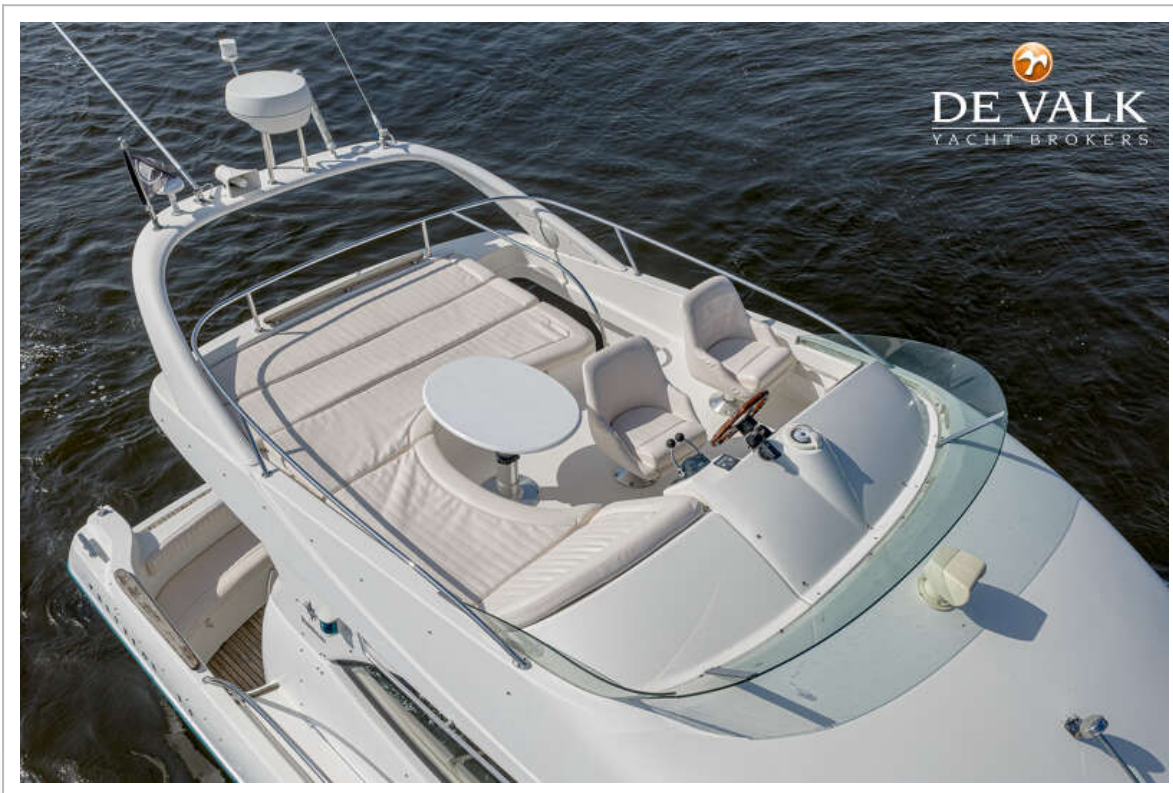
# JEANNEAU PRESTIGE 36



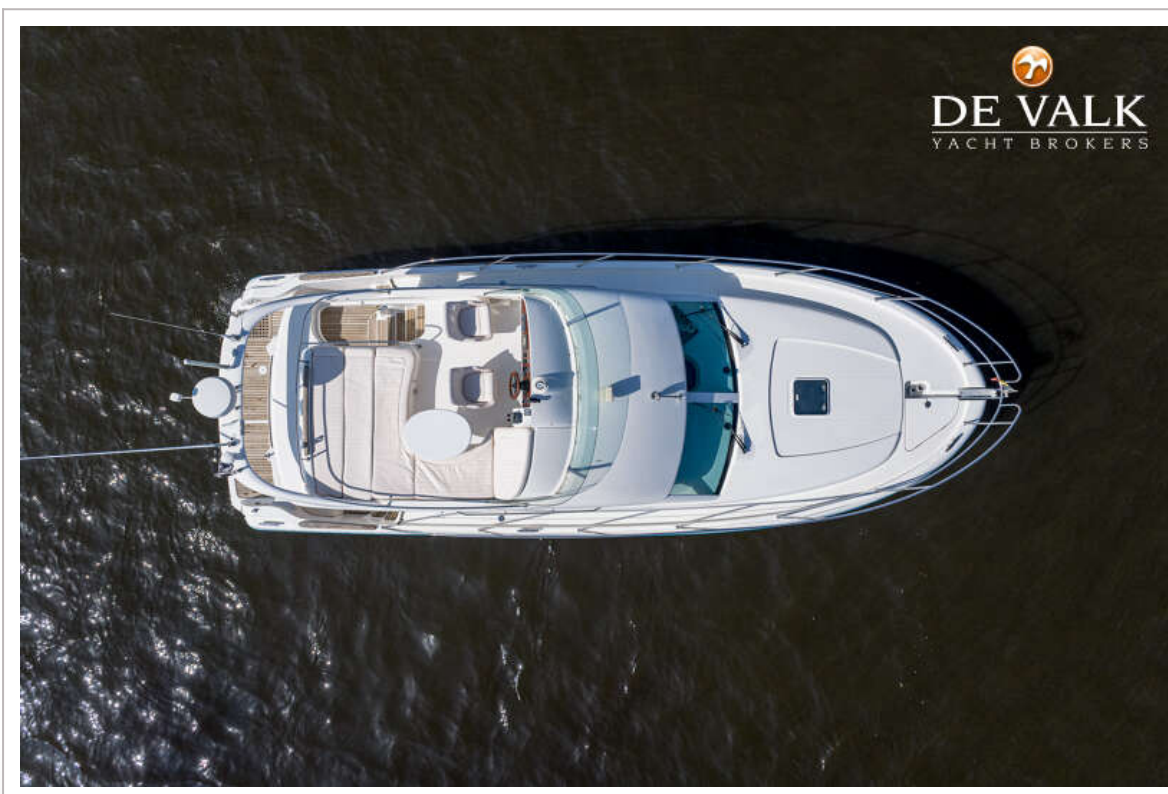
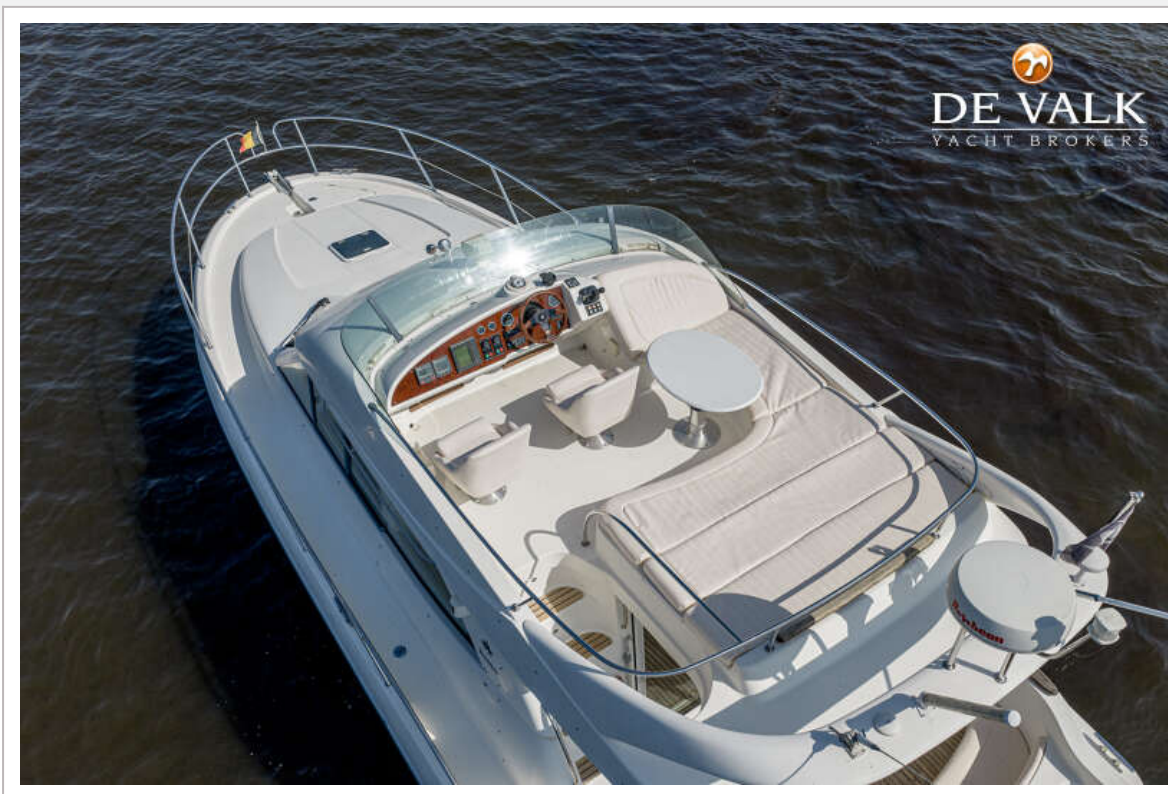
# JEANNEAU PRESTIGE 36



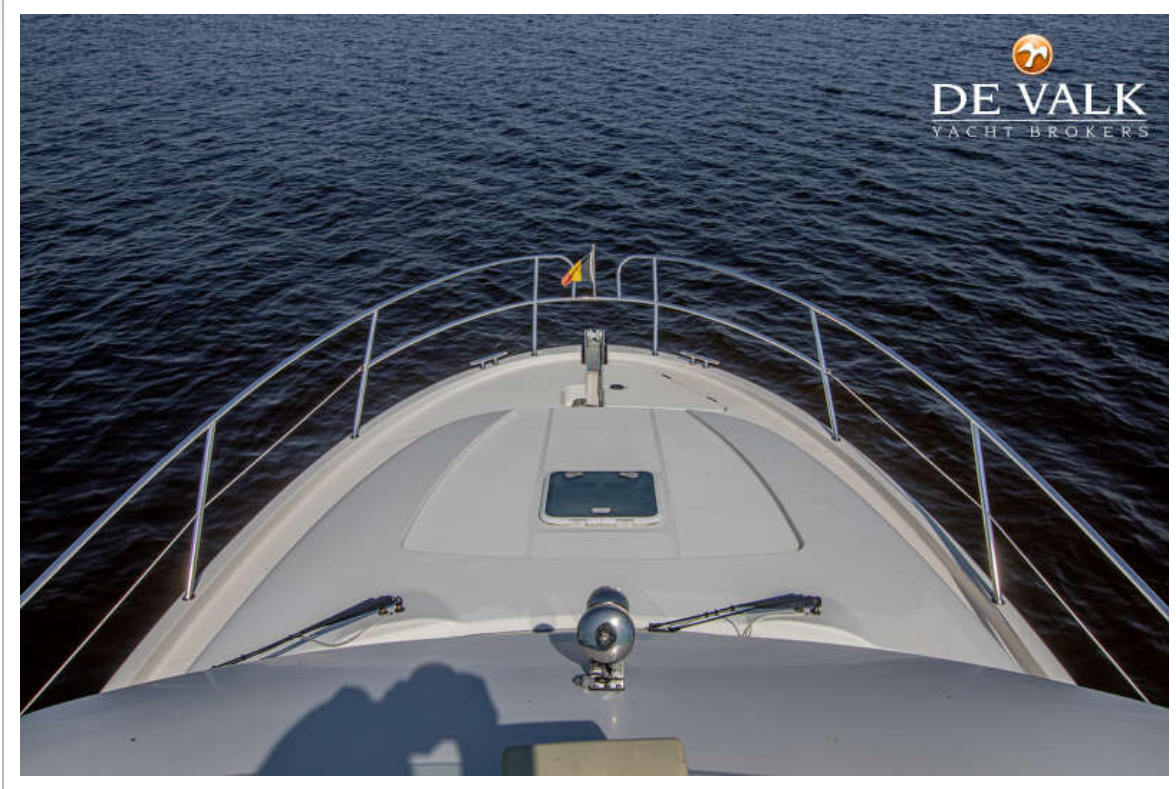
# JEANNEAU PRESTIGE 36



# JEANNEAU PRESTIGE 36



# JEANNEAU PRESTIGE 36



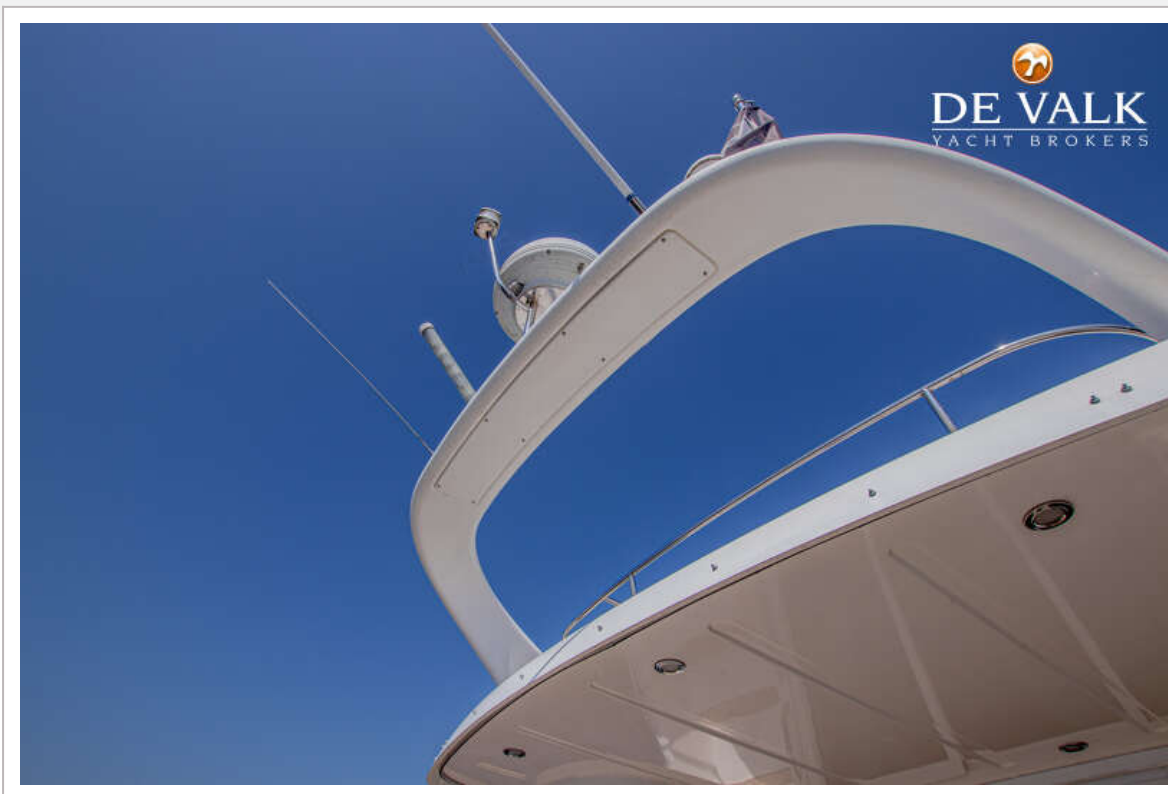
# JEANNEAU PRESTIGE 36



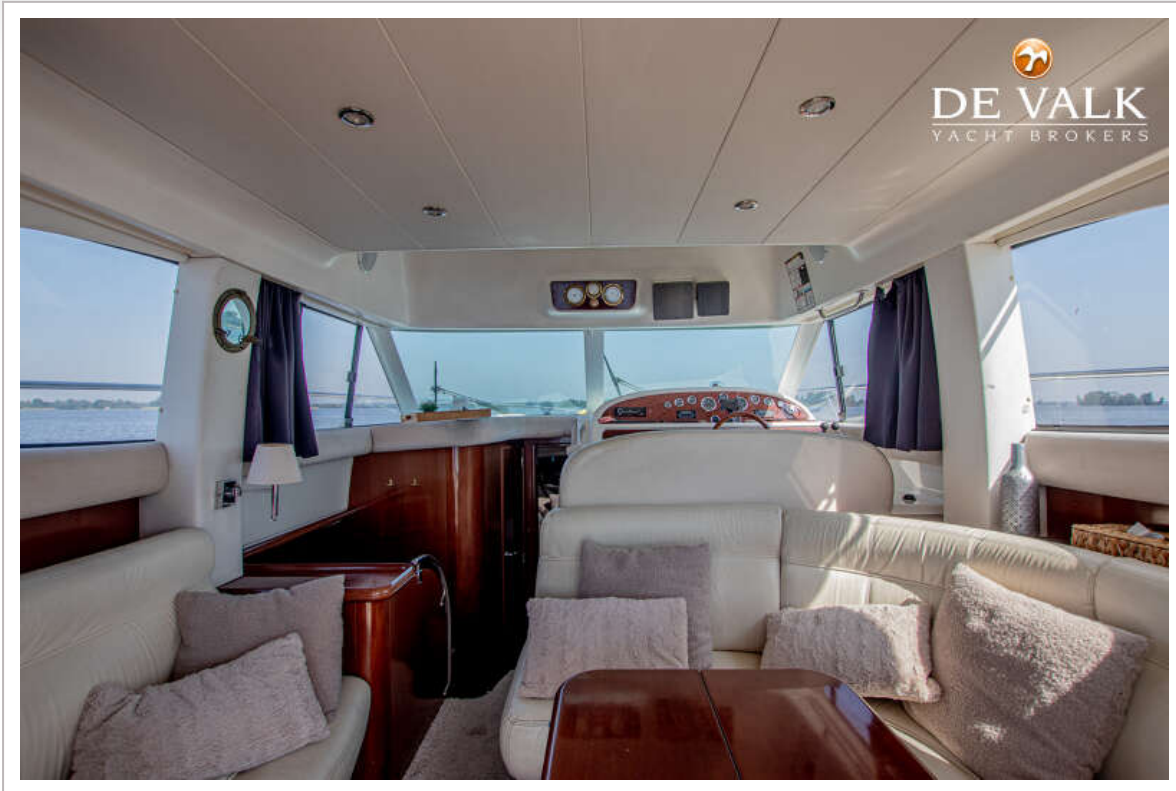
# JEANNEAU PRESTIGE 36



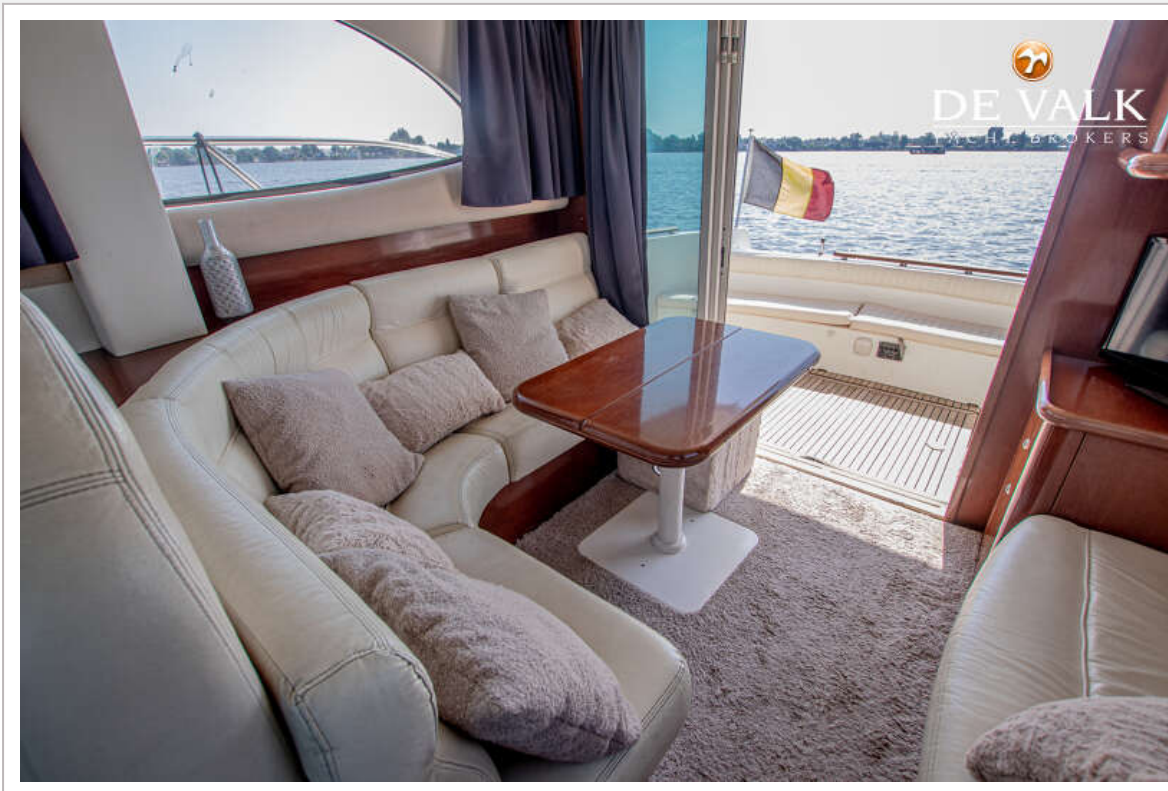
# JEANNEAU PRESTIGE 36



# JEANNEAU PRESTIGE 36



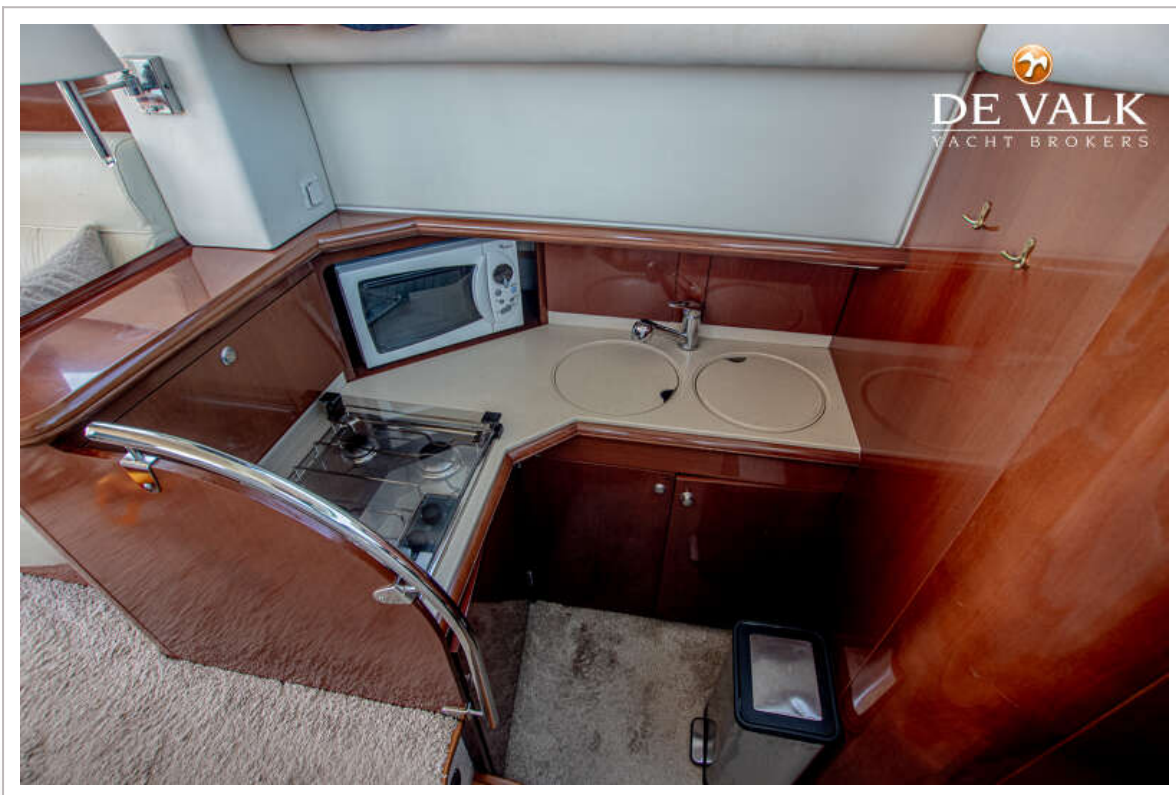
# JEANNEAU PRESTIGE 36



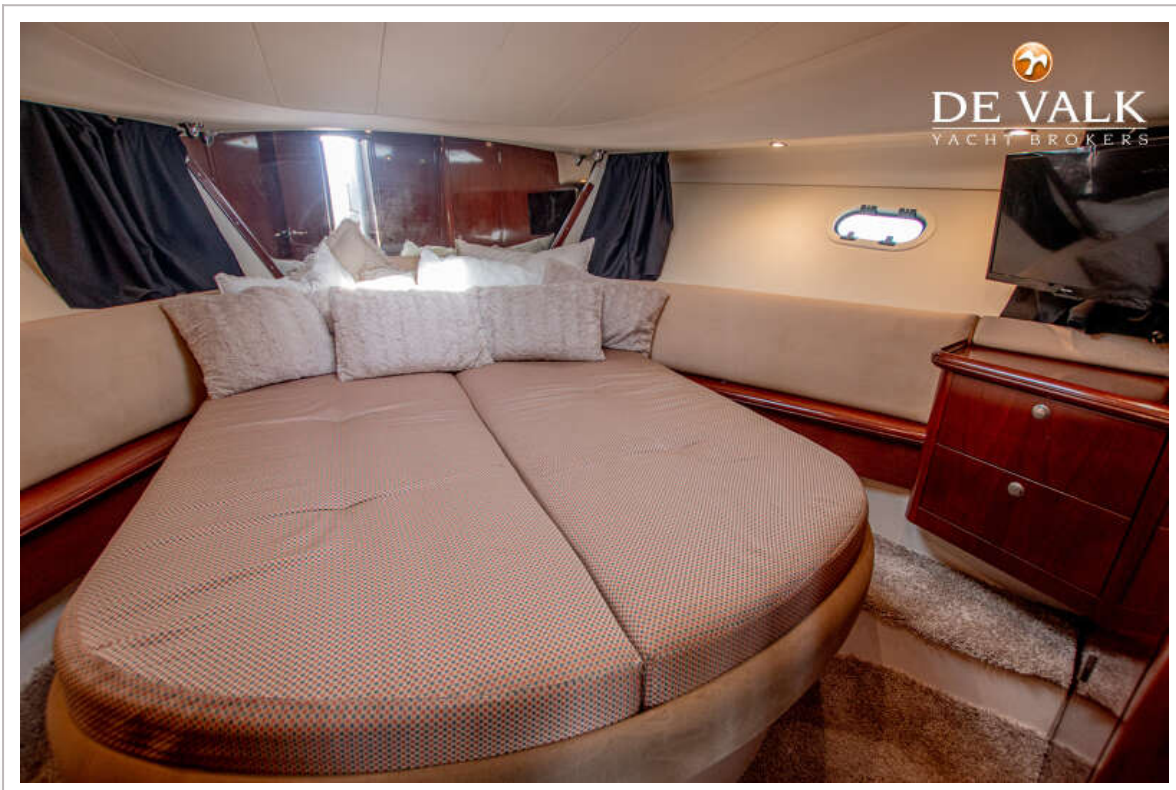
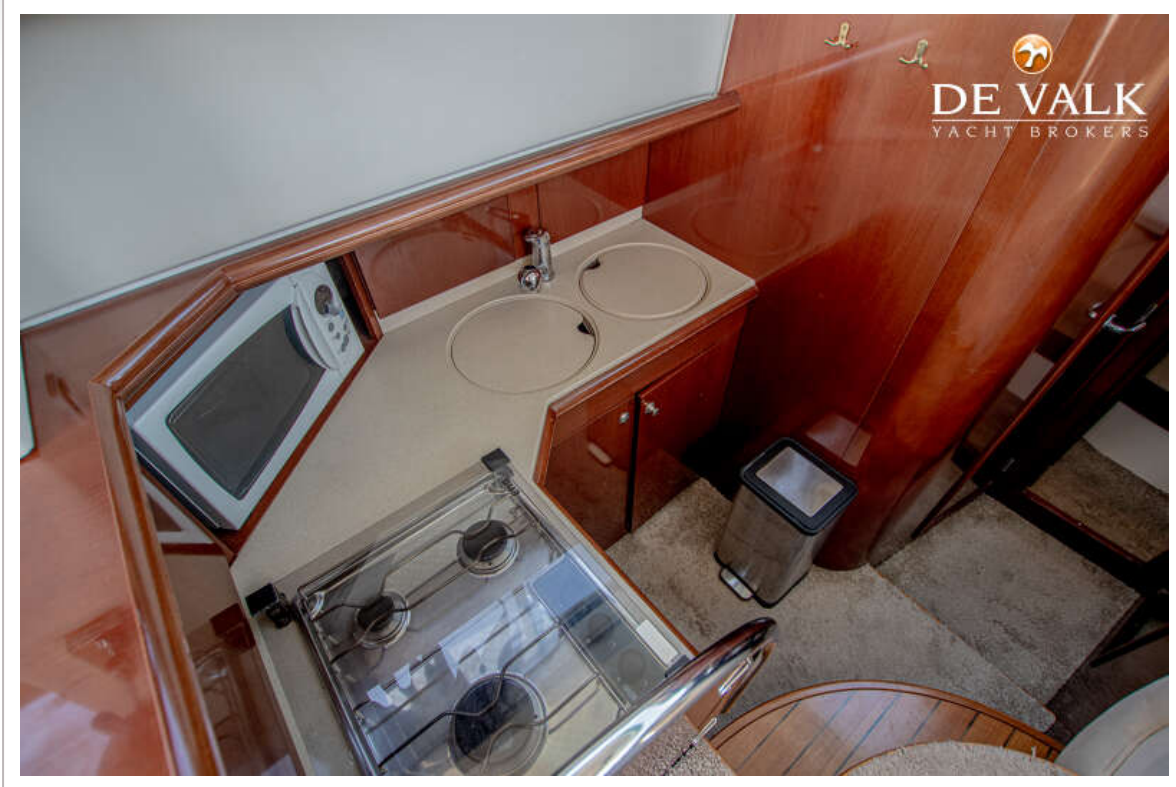
# JEANNEAU PRESTIGE 36



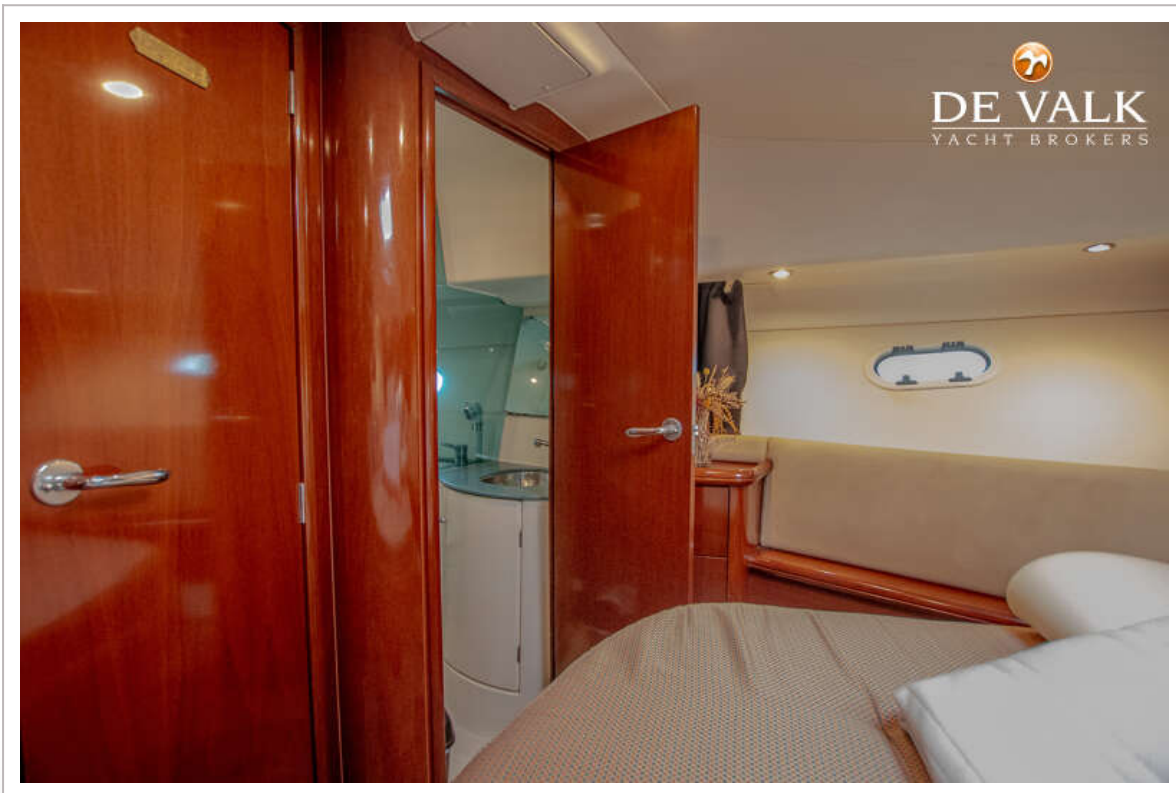
# JEANNEAU PRESTIGE 36



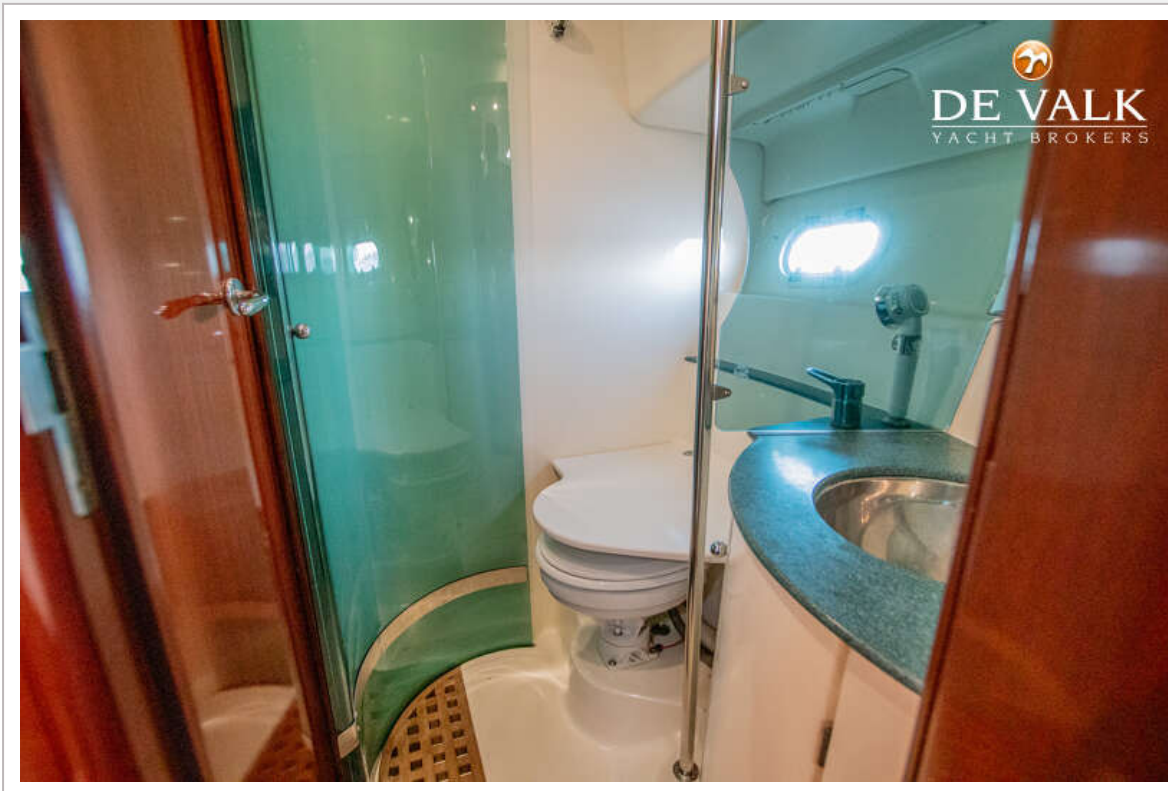
# JEANNEAU PRESTIGE 36



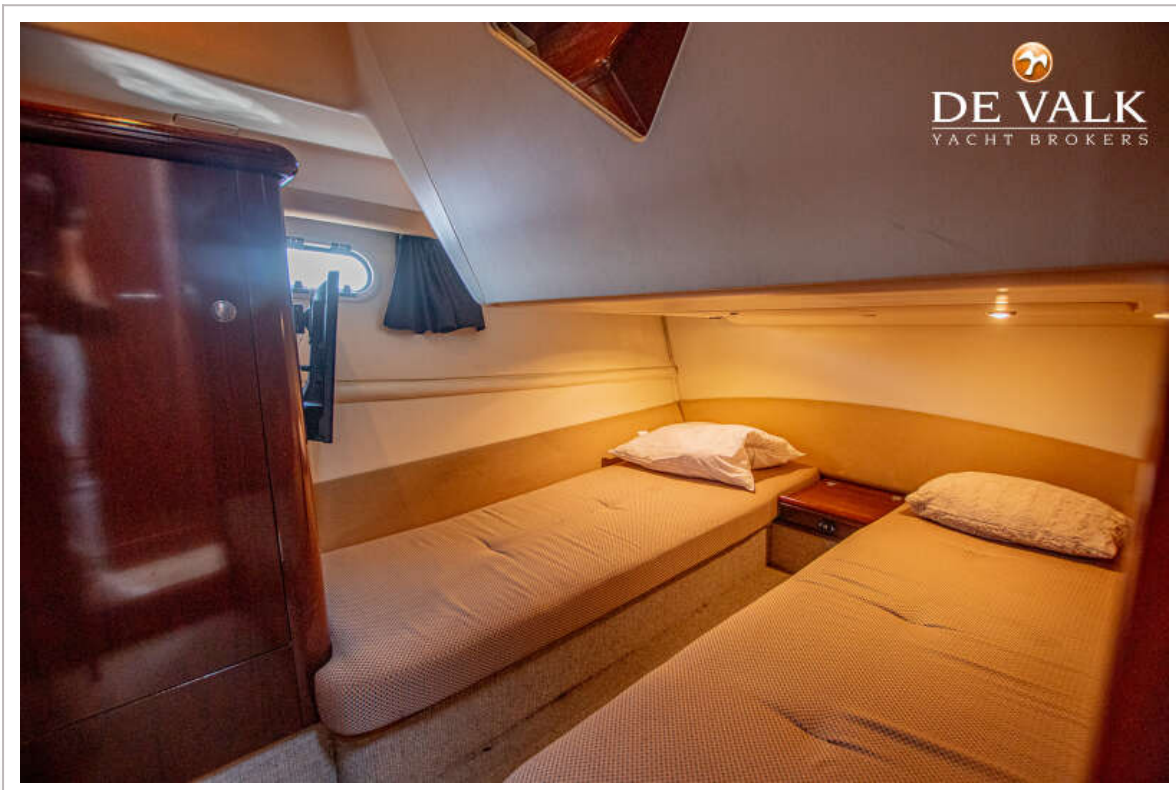
# JEANNEAU PRESTIGE 36



# JEANNEAU PRESTIGE 36



# JEANNEAU PRESTIGE 36



# JEANNEAU PRESTIGE 36

