



DE VALK  
YACHT BROKERS



HALLBERG RASSY 43 MK I



DE VALK  
YACHT BROKERS

# HALLBERG RASSY 43 MK I

## BROKER'S COMMENTS

HR 43 MKI is one of the prettiest boats ever built by Hallberg-Rassy. This is a well-built blue water cruiser. The interior floor is all in one level, there is a seagoing galley, a windshield, a rubbing strake to the hull, big engine, generous tankage and timeless beautiful lines with a natural grace.

*Sofia Iliia-Salvanou*

## SPECIFICATIONS

<b>Dimensions</b>	13.57 x 4.08 x 2.00 (m)	<b>Builder</b>	HALLBERG RASSY VARVS AB
<b>Built</b>	2005	<b>Cabins</b>	
<b>Material</b>	GRP	<b>Berths</b>	
<b>Engine(s)</b>	1 x VOLVO PENTA D2-75 diesel	<b>Hp/Kw</b>	75.00 (hp), 55.20 (kw)
<b>Asking price</b>	Under Offer (VAT )	<b>Lying</b>	elsewhere / Not at sales office

## CONTACT

<b>Sales office</b>	De Valk Corfu	<b>Telephone</b>	(+30) 266 111 8095
<b>Address</b>	New Port of Corfu, near Gouvia Marina 490 83 Corfu GR	<b>E-mail</b>	corfu@devalk.nl

## DISCLAIMER

These particulars are given in good faith as supplied but cannot be guaranteed.



# HALLBERG RASSY 43 MK I

## GENERAL

<b>Model</b>	HALLBERG RASSY 43 MK I
<b>Type</b>	sailing yacht
<b>LOA (m)</b>	13,57
<b>LWL (m)</b>	11,75
<b>Beam (m)</b>	4,08
<b>Draft (m)</b>	2,00
<b>Year built</b>	2005
<b>Builder</b>	HALLBERG RASSY VARVS AB
<b>Country</b>	Sweden
<b>Designer</b>	German Frers
<b>Displacement (t)</b>	12,7
<b>CE norm</b>	A
<b>Hull material</b>	GRP
<b>Hull colour</b>	white
<b>Keel type</b>	fin keel
<b>Superstructure material</b>	GRP
<b>Deck material</b>	GRP
<b>Deck finish</b>	teak
<b>Cockpit deck finish</b>	teak
<b>Antifouling (year)</b>	2024
<b>Window material</b>	glass
<b>Deckhatch</b>	yes
<b>Portholes</b>	yes
<b>Insulation</b>	foam
<b>Fuel tank (litre)</b>	stainless steel 395 X 1 TANK
<b>Freshwater tank (litre)</b>	650 (420+230) Two tanks
<b>Blackwater tank (litre)</b>	25
<b>Wheel steering</b>	yes

## ACCOMMODATION



# HALLBERG RASSY 43 MK I

Floor	teak
Saloon	yes
Heating	yes
Navigation center	yes
Chart table	yes
Aft Cabin	yes
Dinette	yes
Galley	yes
Countertop	yes
Sink	yes
Cooker	calor gas
Oven	yes
Gas alarm	yes
Fridge	yes
Freezer	yes
Hot water system	yes
Water pressure system	yes
Coffee maker	yes
Crockery	yes
Owners cabin	double bed
Bathroom	yes
Toilet	en suite
Wash basin	in the bathroom
Shower	en suite
Guest cabin 1	double bed
Wardrobe	yes
Bathroom	yes
Toilet	yes
Wash basin	in the bathroom
Shower	yes
Guest cabin 2	double bed
Wardrobe	yes



# HALLBERG RASSY 43 MK I

<b>Bathroom</b>	yes
<b>Toilet</b>	yes
<b>Wash basin</b>	in the bathroom
<b>Shower</b>	yes

## MACHINERY

<b>No of engines</b>	1
<b>Make</b>	VOLVO PENTA
<b>Type</b>	D2-75
<b>HP</b>	75
<b>kW</b>	55.20
<b>Fuel</b>	diesel
<b>Cruising speed (kn)</b>	7
<b>Engine hours</b>	2929
<b>Gearbox</b>	HURTH
<b>Propeller type</b>	folding GORI
<b>Propeller blades</b>	3
<b>Propeller shaft material</b>	stainless steel
<b>Manual bilge pump</b>	Henderson
<b>Electric bilge pump</b>	3500 Gph
<b>Electrical installation</b>	yes
<b>Batteries</b>	Heavy duty batteries x 6
<b>Start battery</b>	1 x 80 Ah
<b>Service battery</b>	5 x 80 Ah
<b>Battery charger</b>	yes
<b>Solar panel</b>	2 x 1000 w
<b>Shorepower</b>	yes

## NAVIGATION

<b>Compass</b>	yes
<b>Depth sounder</b>	RAYMARINE ST60



# HALLBERG RASSY 43 MK I

Log	yes
VHF	RAYMARINE 240E
Autopilot	RAYMARINE ST7001
Radar	RAYMARINE 2 Kw
GPS	RAYMARINE E80 at Chart table
Navtex	yes
AIS transceiver	RAYMARINE 856
EPIRB	Ocean signal
Navigation lights	All LED

## EQUIPMENT

Bimini	yes
Winter cover	yes
Cockpit cushions	yes
Cockpit table	yes
Boarding ladder	yes
Gangway	yes
Anchor	Delta 24 Kg
Anchor chain	60m galvanized
Windlass	LEWMAR
Dinghy	yes
Outboard	YAMAHA 2,5 Hp
Sea railing	yes
Life raft	yes
Life raft (pers)	For 6 persons
Lifejackets	yes
Lifebuoy	yes
Radar reflector	yes
Fenders	yes
Mooring lines	yes
Spare parts	yes



**Fire extinguisher**

X 4 plus fire blanket

## RIGGING

**Rigging**

yes

**Standing rigging**

yes

**Spreaders**

Triple by SELDEN

**Mainsail**

Furling in mast. Elvstrom in good condition & a spare one older

**Genoa**

Furling. In good condition

**Genoa II**

In good order

**Genoa furler**

yes

**Halyard winches**

yes

**Multifunctional winches**

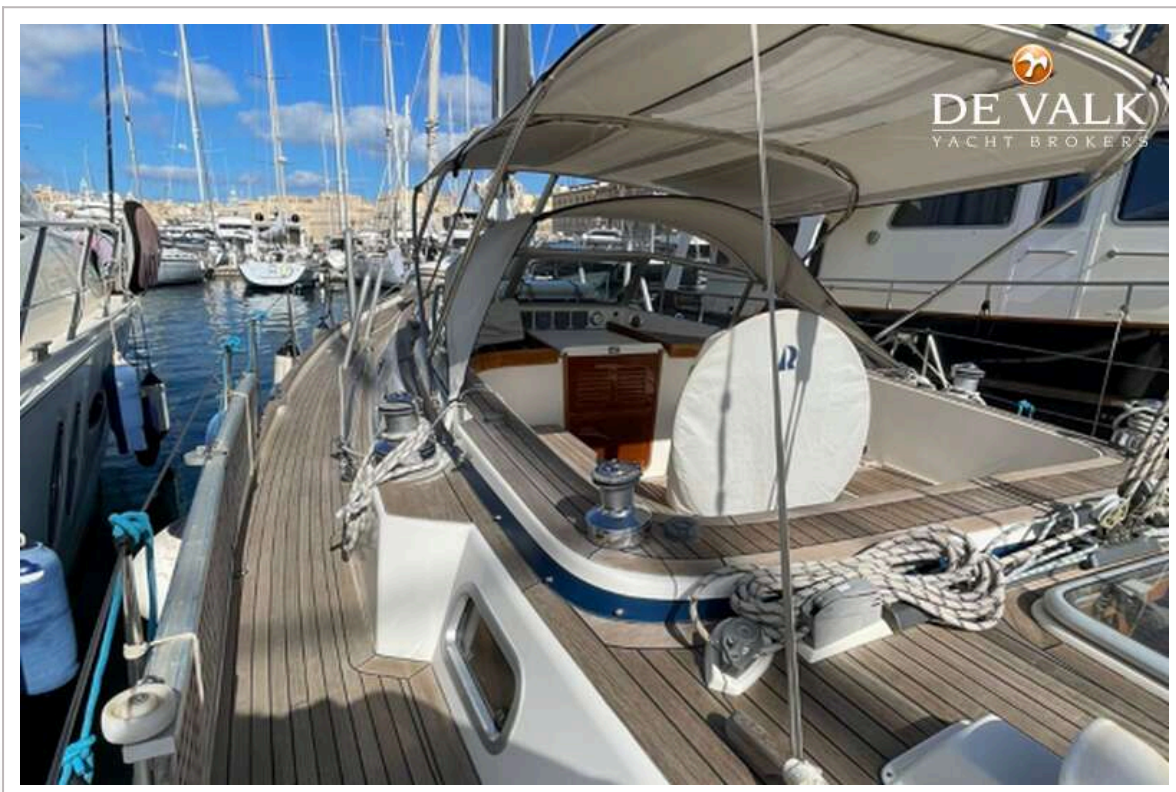
yes



# HALLBERG RASSY 43 MK I



# HALLBERG RASSY 43 MK I



# HALLBERG RASSY 43 MK I



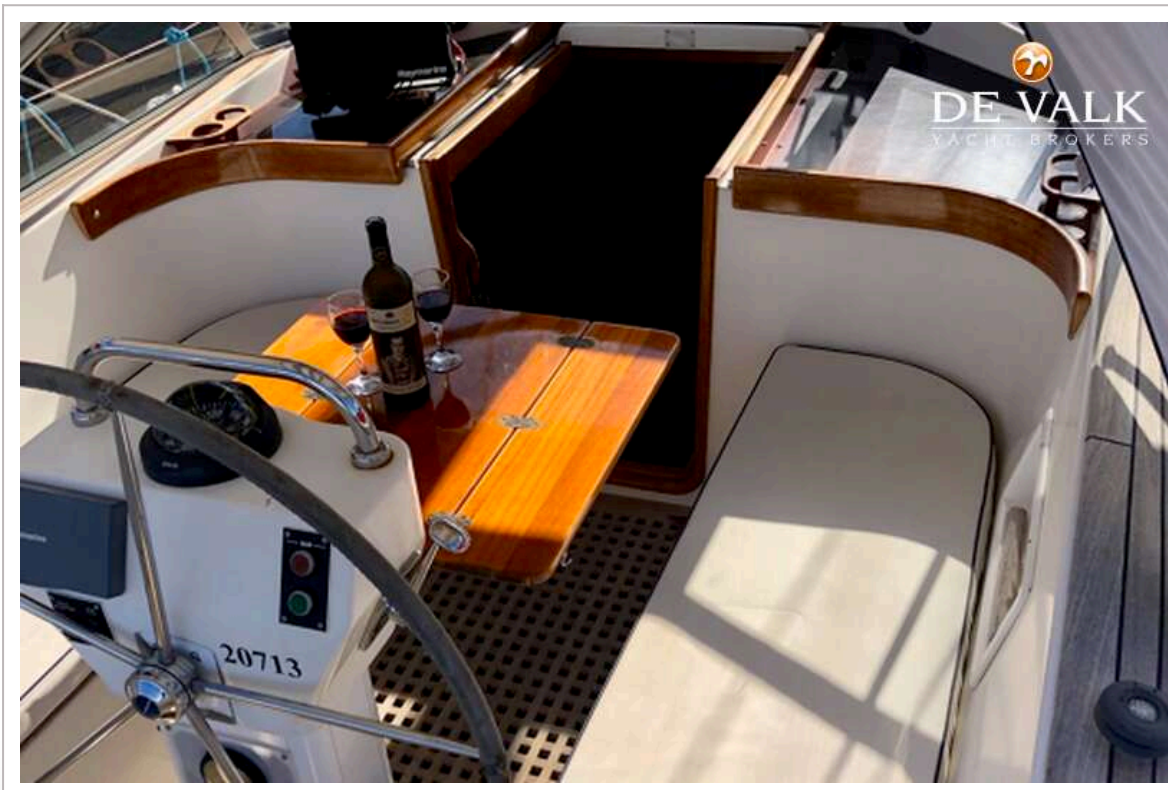
# HALLBERG RASSY 43 MK I



# HALLBERG RASSY 43 MK I



# HALLBERG RASSY 43 MK I



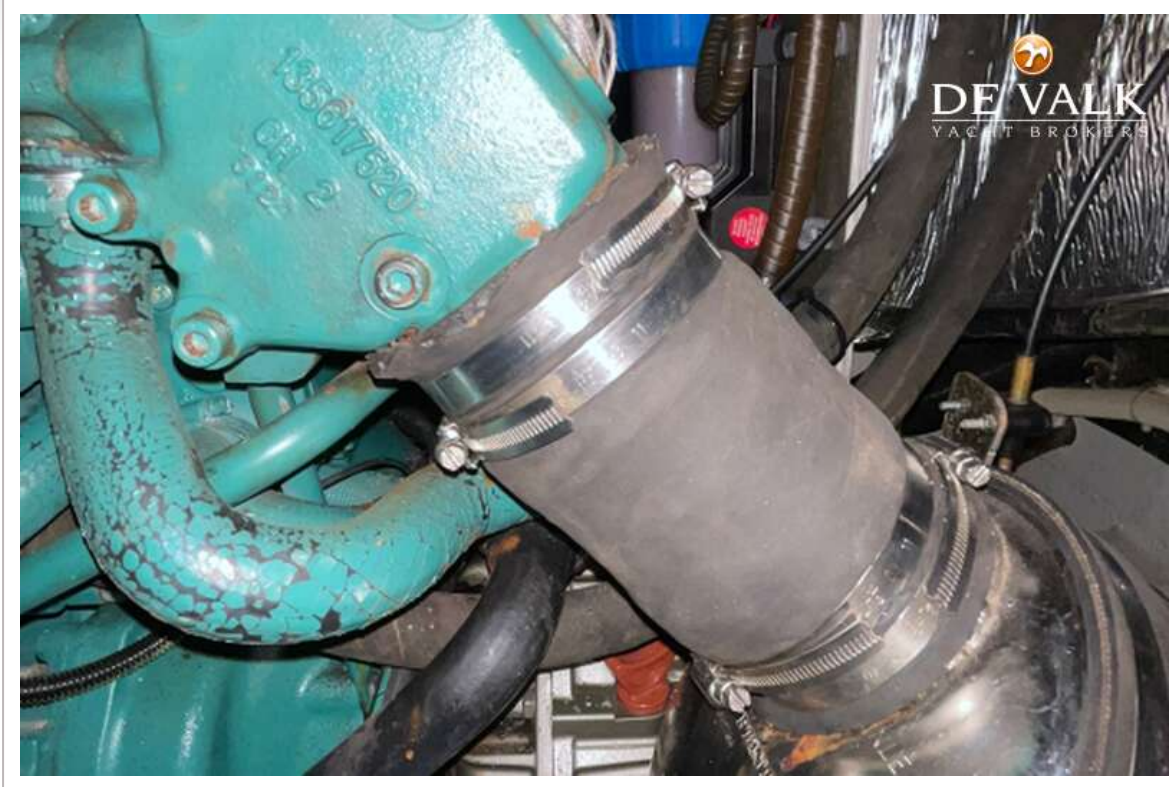
# HALLBERG RASSY 43 MK I



# HALLBERG RASSY 43 MK I



# HALLBERG RASSY 43 MK I



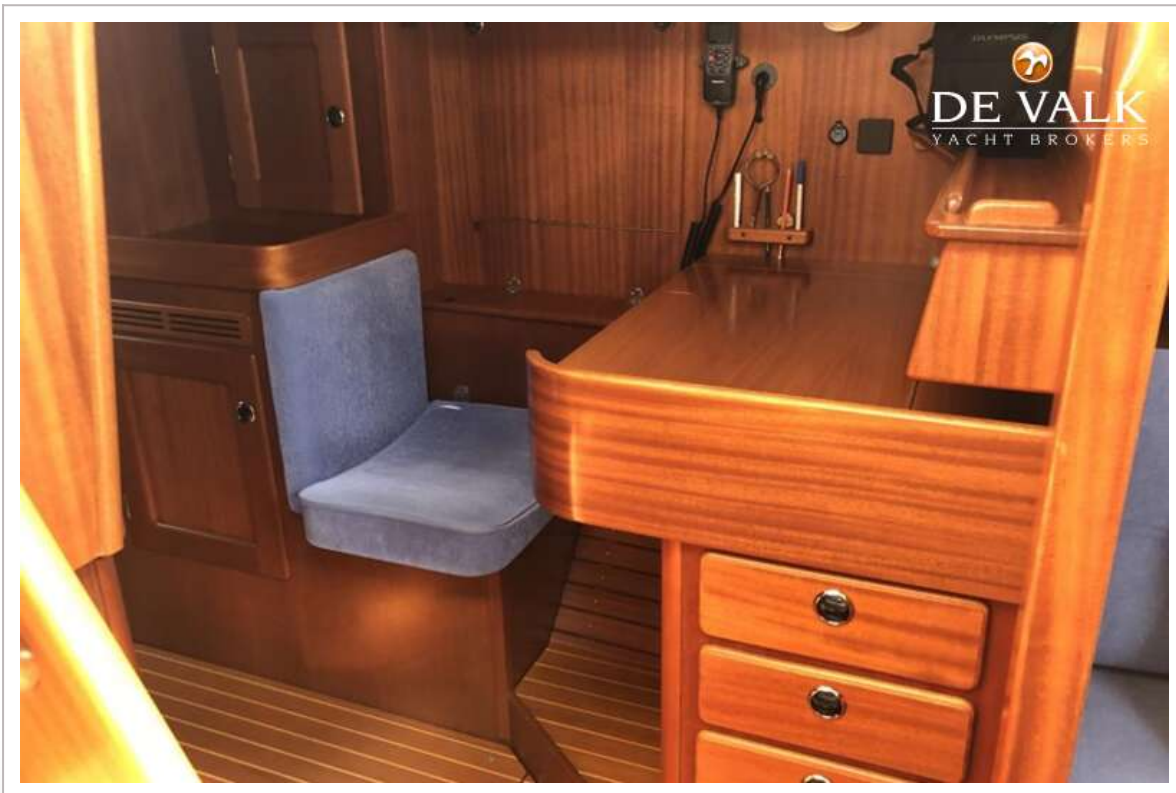
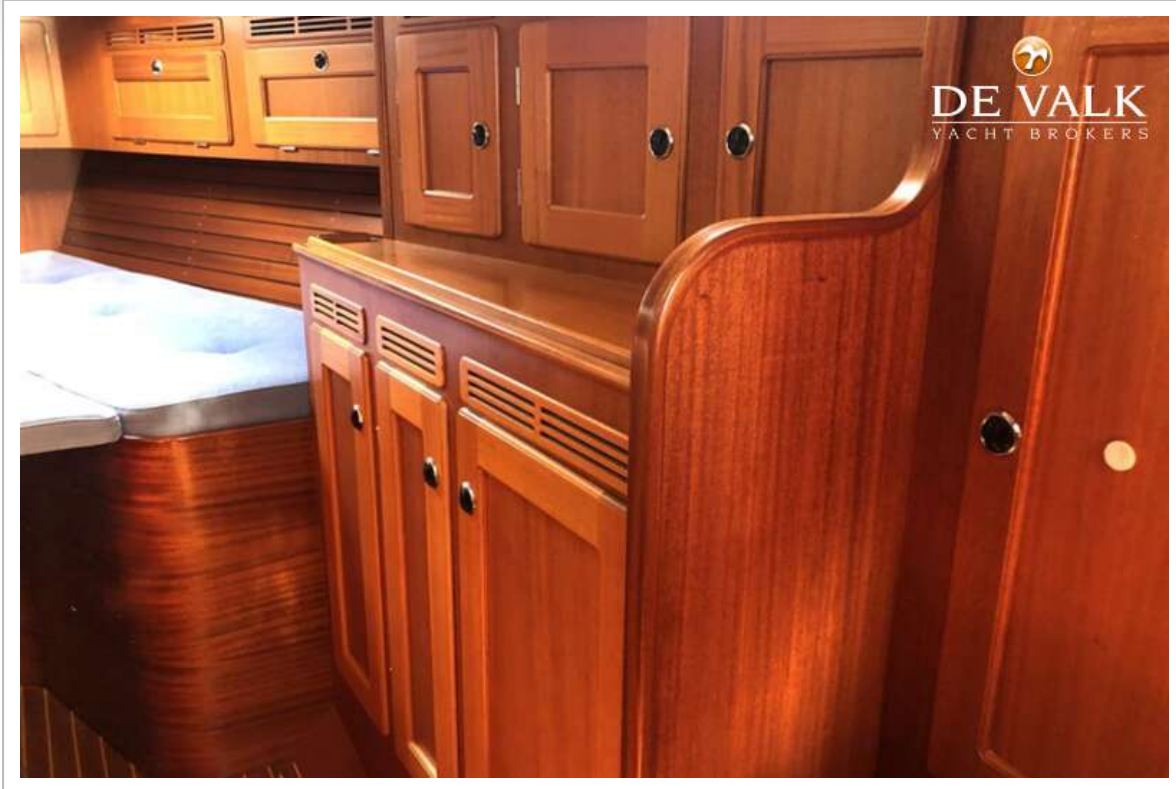
# HALLBERG RASSY 43 MK I



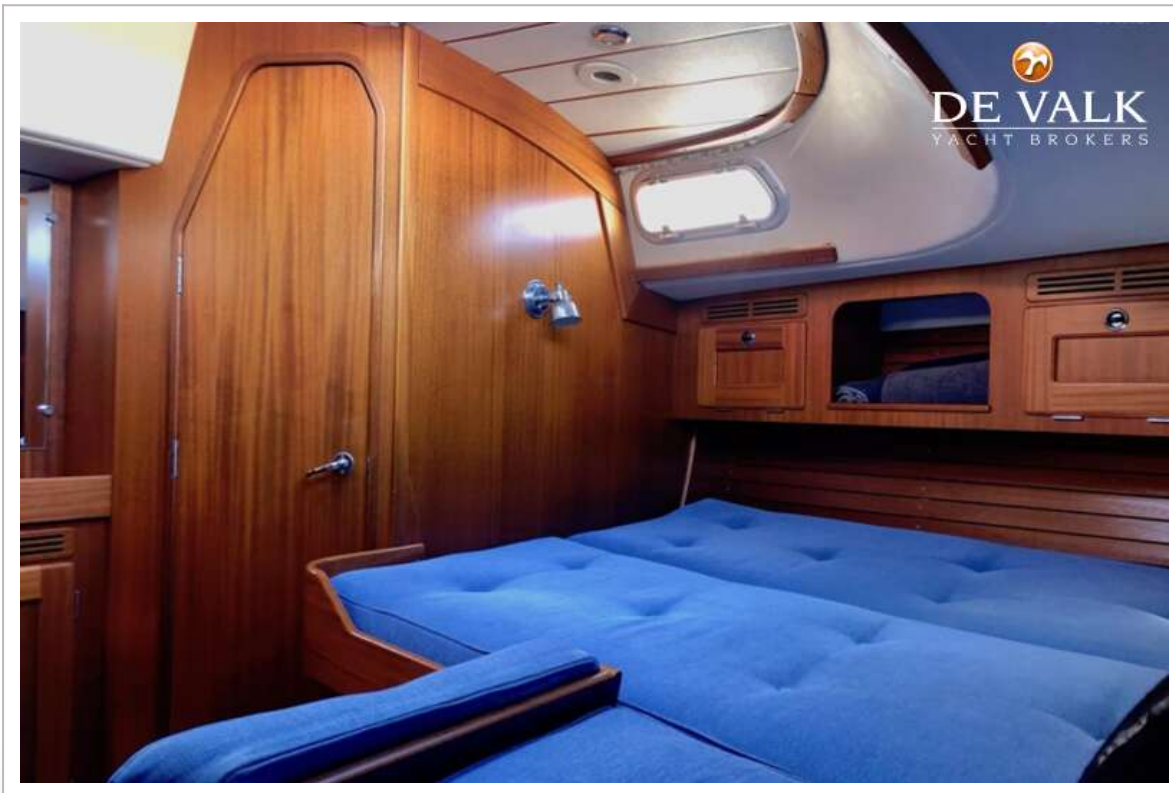
# HALLBERG RASSY 43 MK I



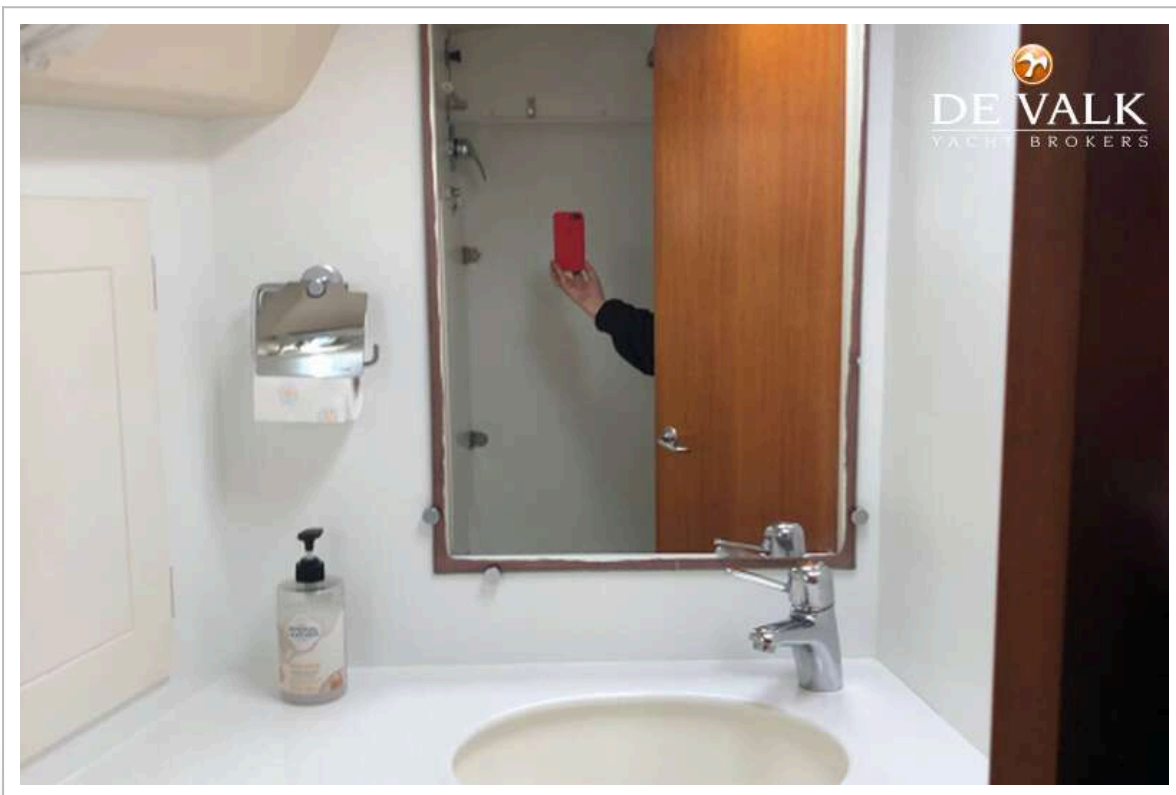
# HALLBERG RASSY 43 MK I



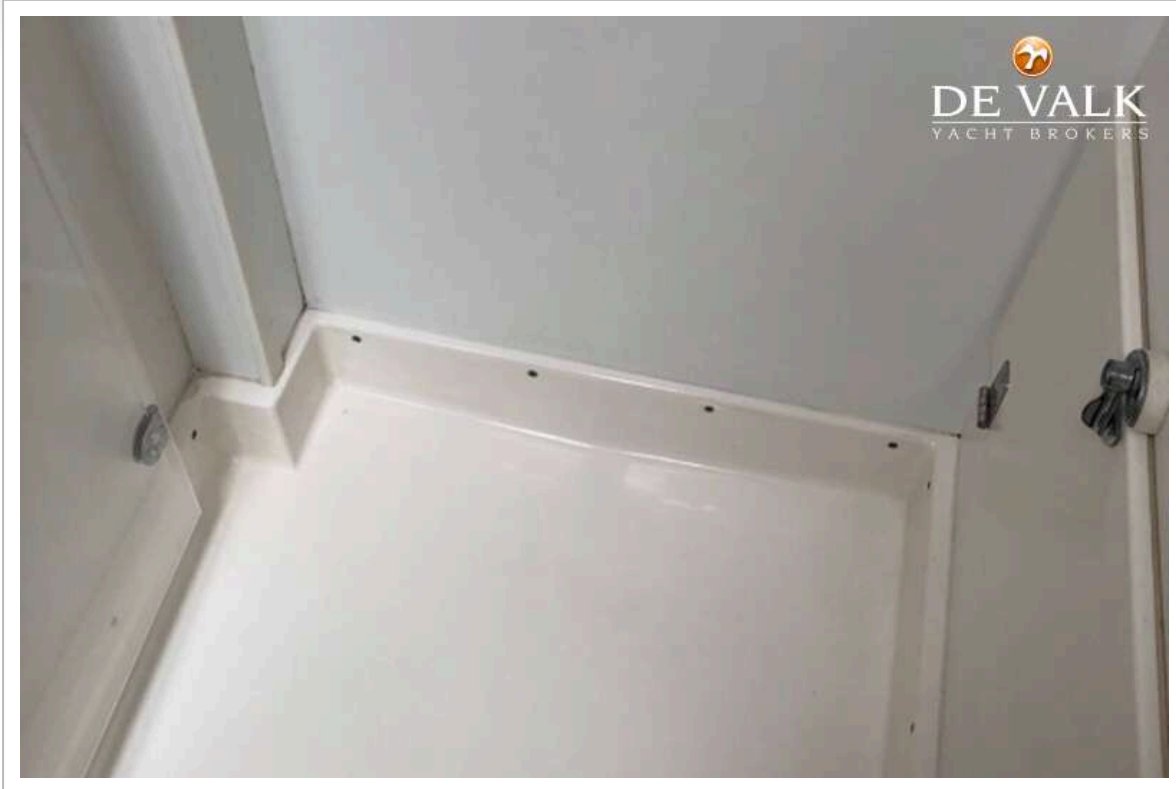
# HALLBERG RASSY 43 MK I



# HALLBERG RASSY 43 MK I



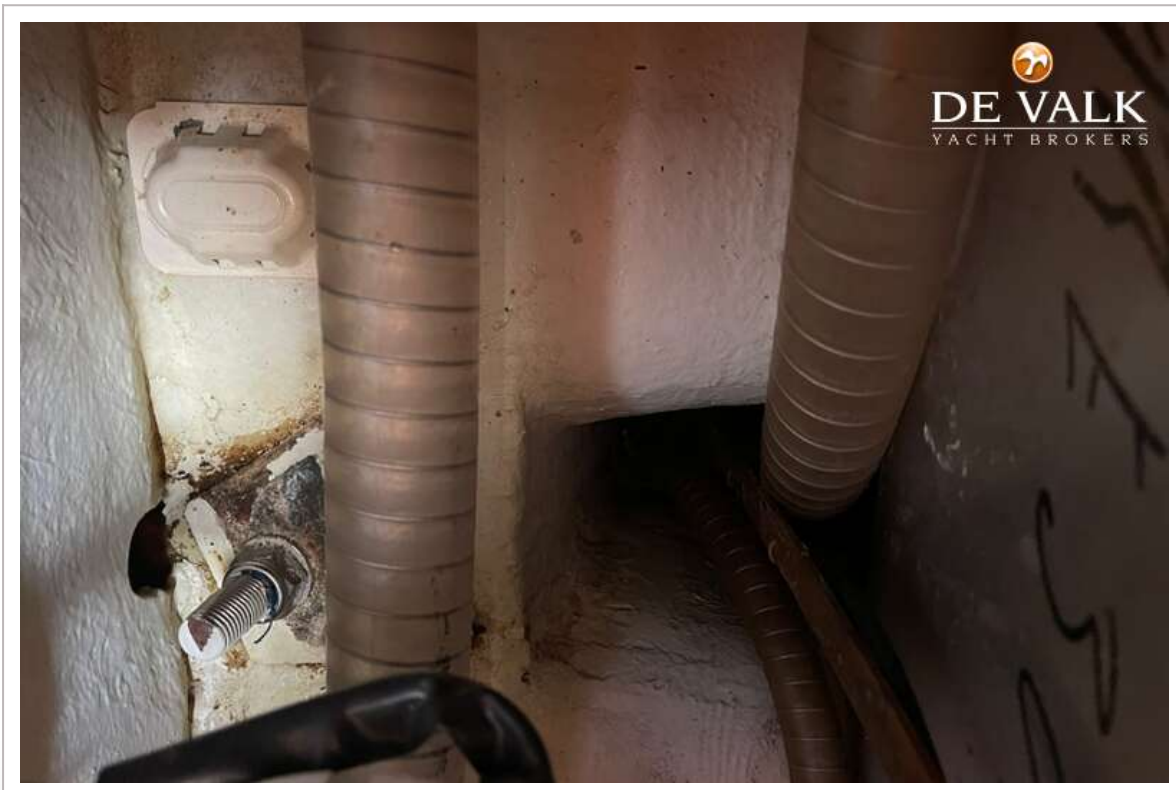
# HALLBERG RASSY 43 MK I



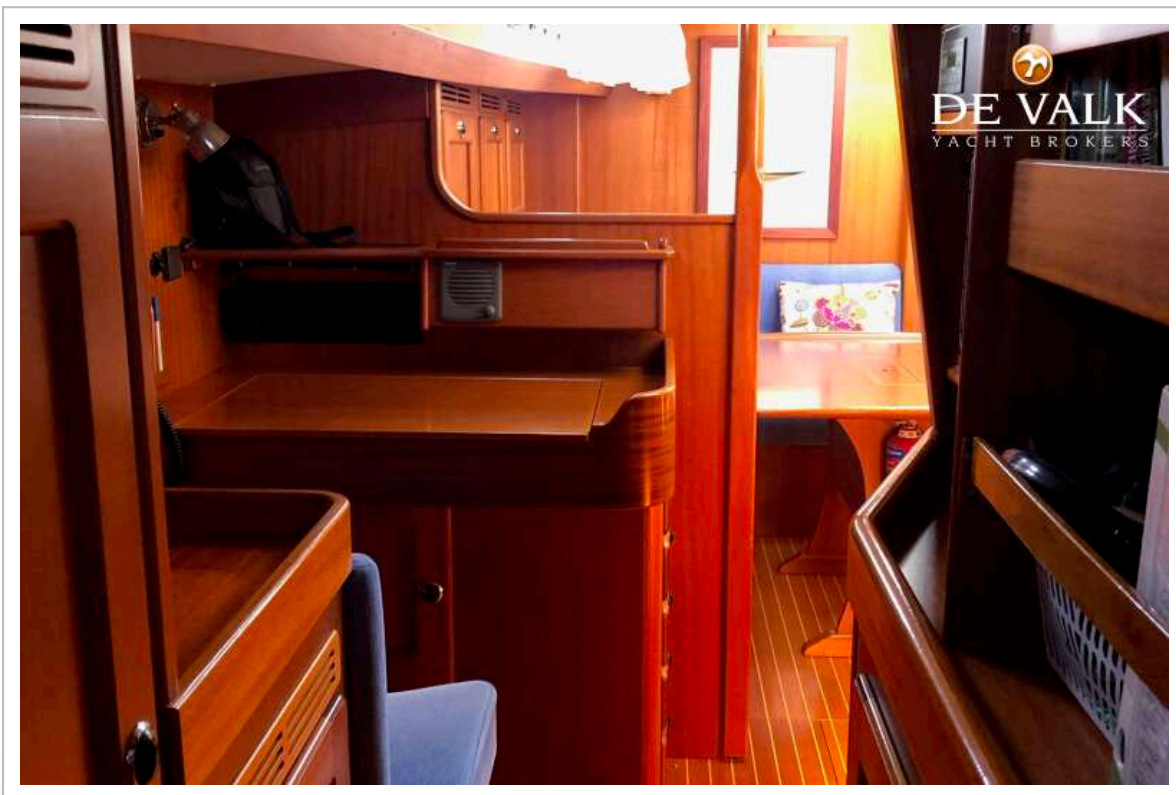
# HALLBERG RASSY 43 MK I



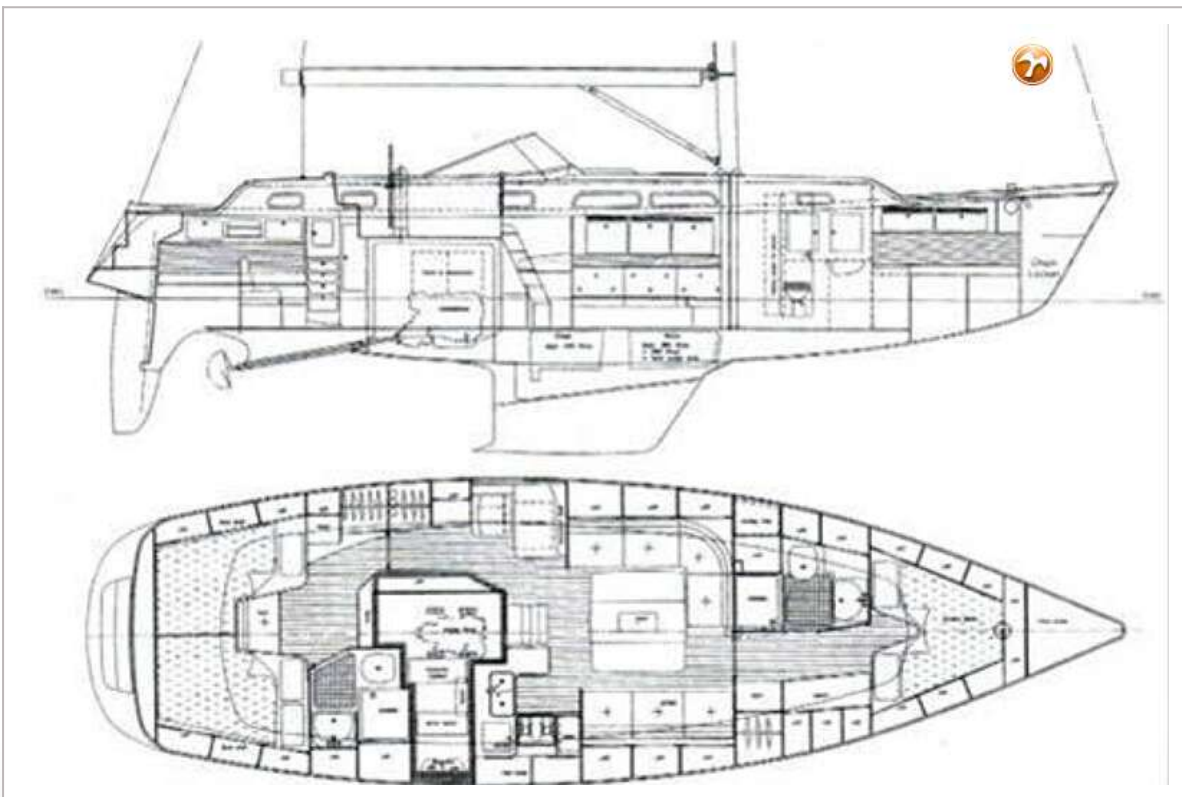
# HALLBERG RASSY 43 MK I



# HALLBERG RASSY 43 MK I



# HALLBERG RASSY 43 MK I



# HALLBERG RASSY 43 MK I

