



**DUFOUR 460 GRAND LARGE**



**DE VALK**  
YACHT BROKERS

# DUFOUR 460 GRAND LARGE

## BROKER'S COMMENTS

This Dufour 460 Grand Large is a charter coastal cruiser in excellent condition with new main sail (2022) and Genoa (2018), jet thruster. This 460 GL is the best of both worlds. The impressive beam (which is carried well aft), and high freeboard make the yacht appear larger than its 46 ft overall length. She is now available for auction under this link: <https://brightauctions.com/en/lot-details/20732>

*Jörg Hellmich*

## SPECIFICATIONS

<b>Dimensions</b>	14.15 x 4.50 x 2.20 (m)	<b>Builder</b>	Dufour Yachts
<b>Built</b>	2016	<b>Cabins</b>	4
<b>Material</b>	GRP	<b>Berths</b>	9
<b>Engine(s)</b>	1 x Volvo Penta D2 75F diesel	<b>Hp/Kw</b>	75.00 (hp), 55.20 (kw)
<b>Asking price</b>	€ 50.000 (VAT Paid)	<b>Lying</b>	contact Almeria

## CONTACT

<b>Sales office</b>	De Valk Almeria	<b>Telephone</b>	+34 950 497 825
<b>Address</b>	Puerto Deportivo, Darsena de la Batea 42 04711 Almerimar ES	<b>E-mail</b>	almeria@devalk.nl

## DISCLAIMER

These particulars are given in good faith as supplied but cannot be guaranteed.



# DUFOUR 460 GRAND LARGE

## GENERAL

<b>Model</b>	DUFOUR 460 GRAND LARGE
<b>Type</b>	sailing yacht
<b>LOA (m)</b>	14,15
<b>LWL (m)</b>	12,54
<b>Beam (m)</b>	4,50
<b>Draft (m)</b>	2,20
<b>Air draft (m)</b>	16,50
<b>Headroom (m)</b>	2,05
<b>Year built</b>	2016
<b>Builder</b>	Dufour Yachts
<b>Country</b>	France
<b>Designer</b>	Umberto Felci
<b>Displacement (t)</b>	10,76
<b>Ballast (tonnes)</b>	cast iron 2,85
<b>CE norm</b>	A
<b>Hull material</b>	GRP
<b>Hull colour</b>	white
<b>Hull shape</b>	round-bilged
<b>Keel type</b>	fin keel with bulb
<b>Superstructure material</b>	GRP
<b>Deck material</b>	GRP
<b>Deck finish</b>	non-skid moulded in
<b>Superstructure deck finish</b>	non-skid moulded in
<b>Cockpit deck finish</b>	teak
<b>Antifouling (year)</b>	2023
<b>Window frame</b>	aluminium Lewmar
<b>Window material</b>	perspex
<b>Deckhatch</b>	Lewmar flush Mitre
<b>Portholes</b>	stainless steel
<b>Fuel tank (litre)</b>	polyethylene 270



# DUFOUR 460 GRAND LARGE

Level indicator (fuel tank)	Gauge
Freshwater tank (litre)	polyethylene 530 in 2 tanks
Level indicator (freshwater)	Gauge
Blackwater tank (litre)	polyethylene 3 x 50
Blackwater tank extraction	deck extraction + pump
Wheel steering	cable steering Twin Helm
Outside helm position	yes
Emergency tiller	yes

## ACCOMMODATION

Cabins	4
Berths	9
Interior	Wood
Layout	4 cabin version
Floor	wood
Saloon	yes
Headroom saloon (m)	2,05
Chart table	yes
Galley	Long shape
Countertop	corian
Sink	stainless steel Double
Cooker	calor gas Eno 3 burner
Oven	Eno
Fridge	Isotherm DR 160
Freezer	Isotherm
Hot water system	220V + engine Isotemp SPA 40L
Water pressure system	electrical ITT Par Max
Hot water tap	yes
Coffee maker	yes
Crockery	yes
Guest cabin 1	double bed Aft Port



# DUFOUR 460 GRAND LARGE

<b>Bed length (m)</b>	2,00
<b>Wardrobe</b>	hanging and shelves
<b>Toilet</b>	en suite
<b>Toilet system</b>	electric Jabsco Kompact
<b>Wash basin</b>	at the toilet
<b>Shower</b>	en suite
<b>Guest cabin 2</b>	double bed Aft STB
<b>Bed length (m)</b>	2,00
<b>Wardrobe</b>	hanging and shelves
<b>Toilet</b>	en suite
<b>Toilet system</b>	electric Jabsco Compact
<b>Wash basin</b>	at the toilet
<b>Shower</b>	en suite
<b>Guest cabin 3</b>	double bed FW Port
<b>Bed length (m)</b>	2,00
<b>Wardrobe</b>	drawers and shelves
<b>Toilet</b>	en suite
<b>Toilet system</b>	electric Jabsco Comfort
<b>Wash basin</b>	at the toilet
<b>Shower</b>	en suite
<b>Guest cabin 4</b>	double bed FW STB
<b>Bed length (m)</b>	2,00
<b>Wardrobe</b>	drawers and shelves
<b>Toilet</b>	en suite
<b>Toilet system</b>	electric Jabsco Comfort
<b>Wash basin</b>	at the toilet
<b>Shower</b>	en suite

## MACHINERY

<b>No of engines</b>	1
<b>Make</b>	Volvo Penta



# DUFOUR 460 GRAND LARGE

Type	D2 75F
HP	75
kW	55.20
Fuel	diesel
Year installed	2016
Maximum speed (kn)	8,6
Cruising speed (kn)	6,5
Consumption (l/hr)	3,5
Range (nm)	400
Engine hours	1055
Engine cooling system	freshwater heat exchanger
Drive	sail-drive
Saildrive seal	SD 150S-B
Engine controls	electrical
Gearbox	hydraulic Volvo
Bowthruster	electric Jet Thruster 90 Single (12/24V)
Exhaust	watercooled
Propeller type	fixed
Propeller blades	3
Manual bilge pump	Whale Smart Bail
Electric bilge pump	Whale Orca
Start battery	1 x 12V / 82 Ah Lead
Service battery	3 x 12V / 140 Ah Lead
Bowthruster battery	4 x 12V / 75 Ah AGM
Battery monitor	Cristec
Battery charger/inverter	Cristec YPower 12V / 60A
Shorepower	with cable 230V

## NAVIGATION

Compass	2 x Olympic 115
Multi control display	2 x Raymarine i70



# DUFOUR 460 GRAND LARGE

<b>Depth sounder/log</b>	Raymarine i50
<b>Windset</b>	Raymarine i70
<b>Repeater</b>	yes
<b>VHF</b>	Raymarien Ray 50
<b>VHF handheld</b>	yes
<b>Autopilot</b>	Raymarine p70 Smartpilot
<b>Rudder angle indicator</b>	Raymarine p70
<b>Plotter/GPS</b>	Raymarine MFD Axiom 9 WiFi
<b>Electronic chart(s)</b>	Navionics Med & Black Sea 04/2021
<b>Navigation lights</b>	Hella LED

## EQUIPMENT

<b>Sprayhood</b>	TTOP Protection
<b>Bimini</b>	TTOP Protection
<b>Cockpit cushions</b>	yes
<b>Cockpit table</b>	yes
<b>Bathing platform</b>	Retractable
<b>Boarding ladder</b>	stainless steel
<b>Gangway</b>	Swiss Tech SL250
<b>Deck shower</b>	Whale Twist h&c
<b>Anchor</b>	Kobra2 25kg
<b>Anchor chain</b>	100m (10mm)
<b>Anchor 2</b>	Brittany 16kg
<b>Windlass</b>	electrical Lewmar CPX4 1600W
<b>Dinghy</b>	inflatable EV
<b>Outboard support</b>	yes
<b>Sea railing</b>	wire
<b>Grab rail (superstructure)</b>	stainless steel
<b>Railing side opening gates</b>	yes
<b>Pushpit</b>	yes
<b>Pulpit</b>	yes



# DUFOUR 460 GRAND LARGE

Life raft	container Almar Alive
Life raft (pers)	10
Last life raft survey	Next: 01.2026
Lifejackets	yes
Safety harness	yes
Lifebuoy	yes
Horn	electric
Binocular	yes
Fenders	yes
Mooring lines	yes
Spare parts	yes
Tools	yes
Radio	Kennwood KDC
Cockpit speakers	Marine MT500D
Speakers in salon	yes
Fire extinguisher	3 x 2kg
Latest extinguisher survey	Yearly inspection until 2024

## RIGGING

Rigging	sloop
Standing rigging	wire Original
Brand mast	Z-Spar
Material mast	aluminium
Spreaders	yes
Mainsail	Elvstrom TNF (07.2022)
Genoa	Elvstrom TNF (07.2018)
Genoa furler	Facnor LS180
Reefing System	main in-mast furling
Boomvang	mechanical and tackle Z-711
Genoa sheetwinches	2 x Lewmar EVO 50 ST 2 SP
Halyard winches	Lewmar EVO 45 ST 2 SP



# DUFOUR 460 GRAND LARGE

**Multifunctional winches**

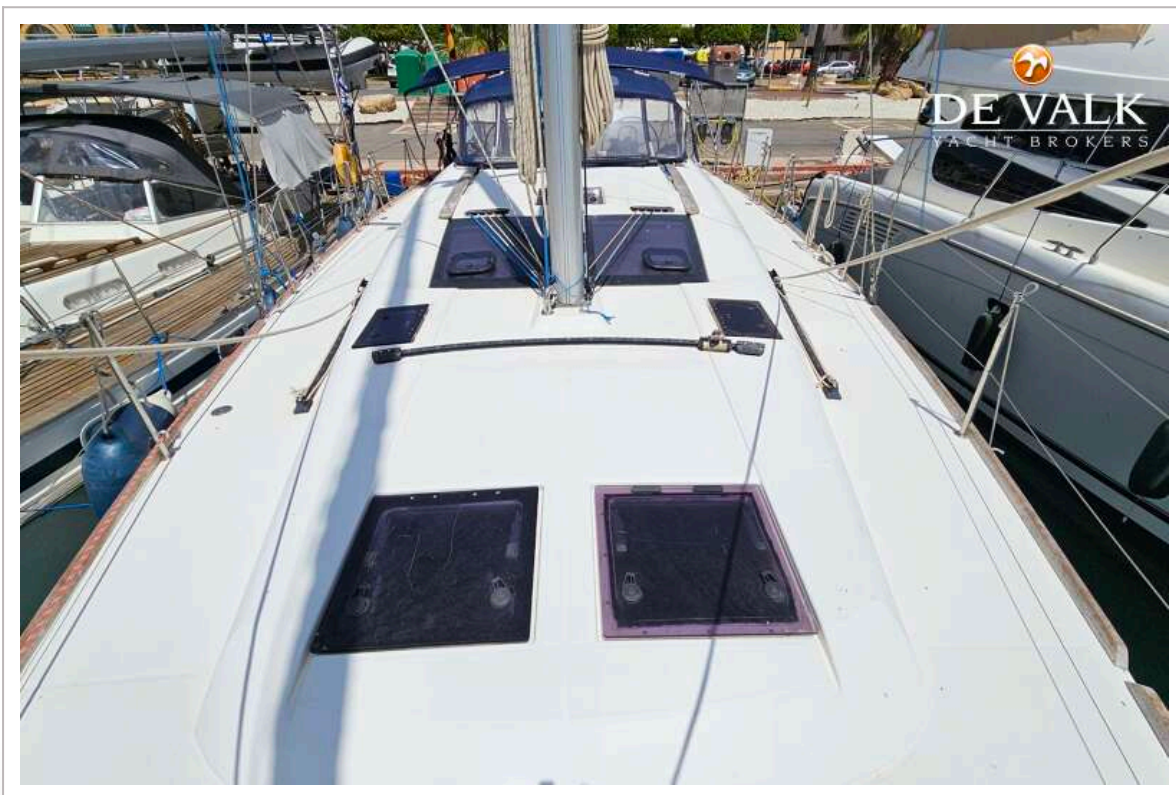
halyard/sheet winches Lewmar EVO 45 EST 2 Sp (electric)



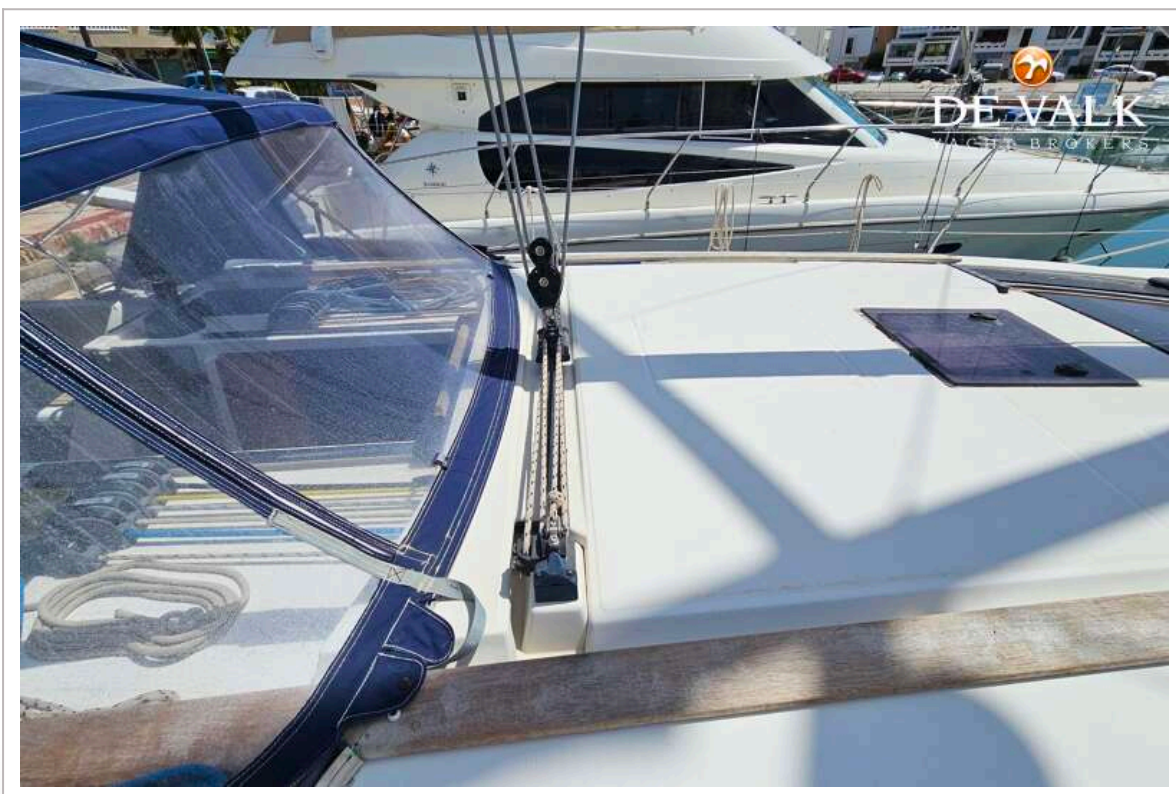
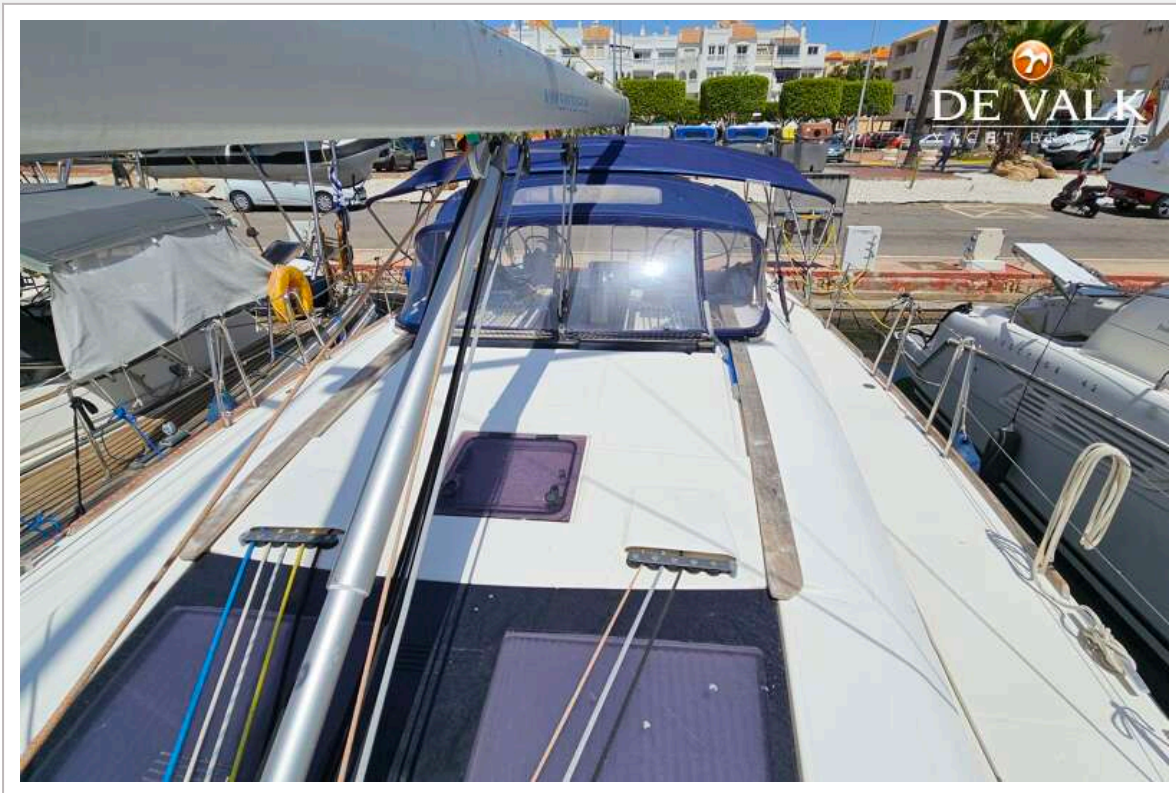
# DUFOUR 460 GRAND LARGE



# DUFOUR 460 GRAND LARGE



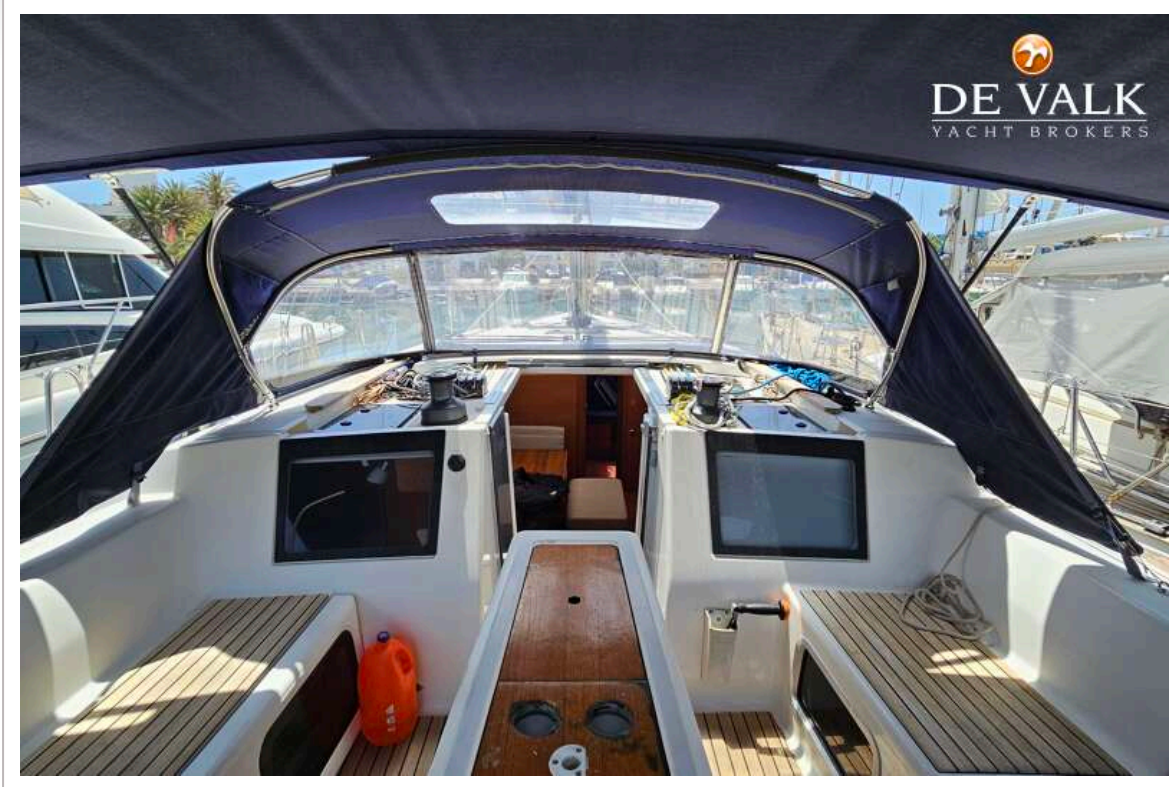
# DUFOUR 460 GRAND LARGE



# DUFOUR 460 GRAND LARGE



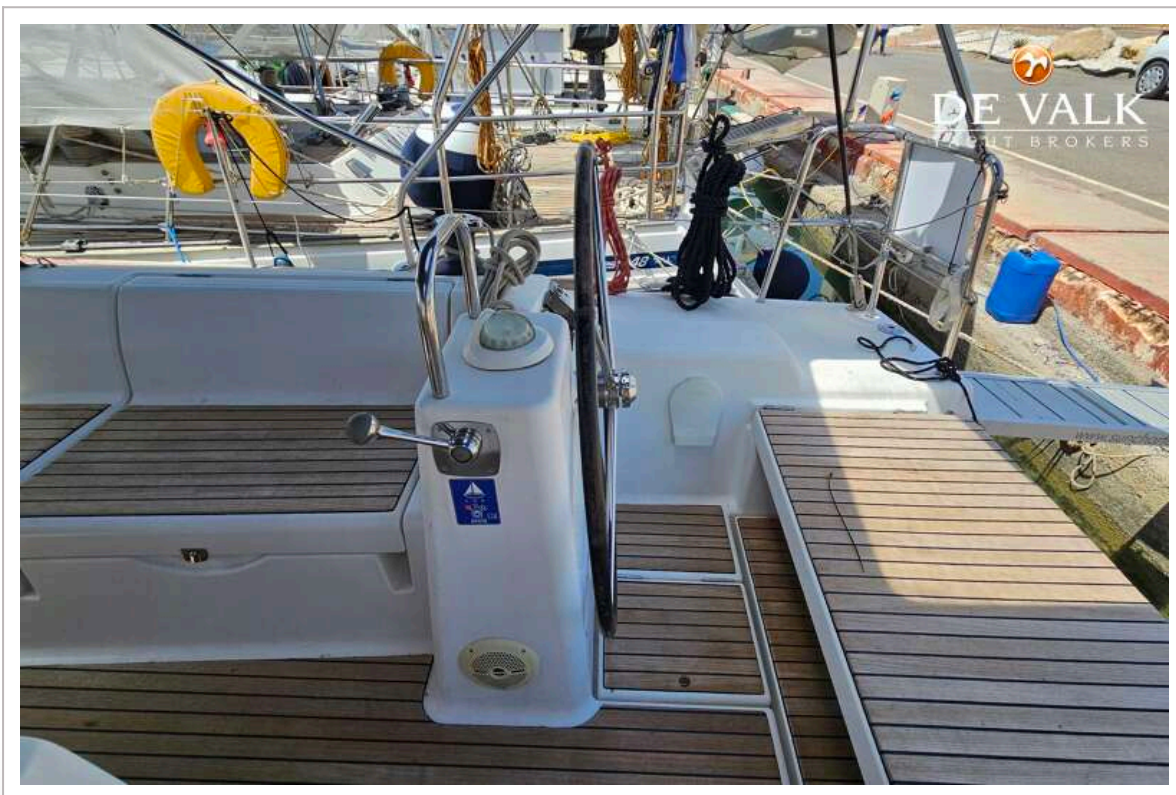
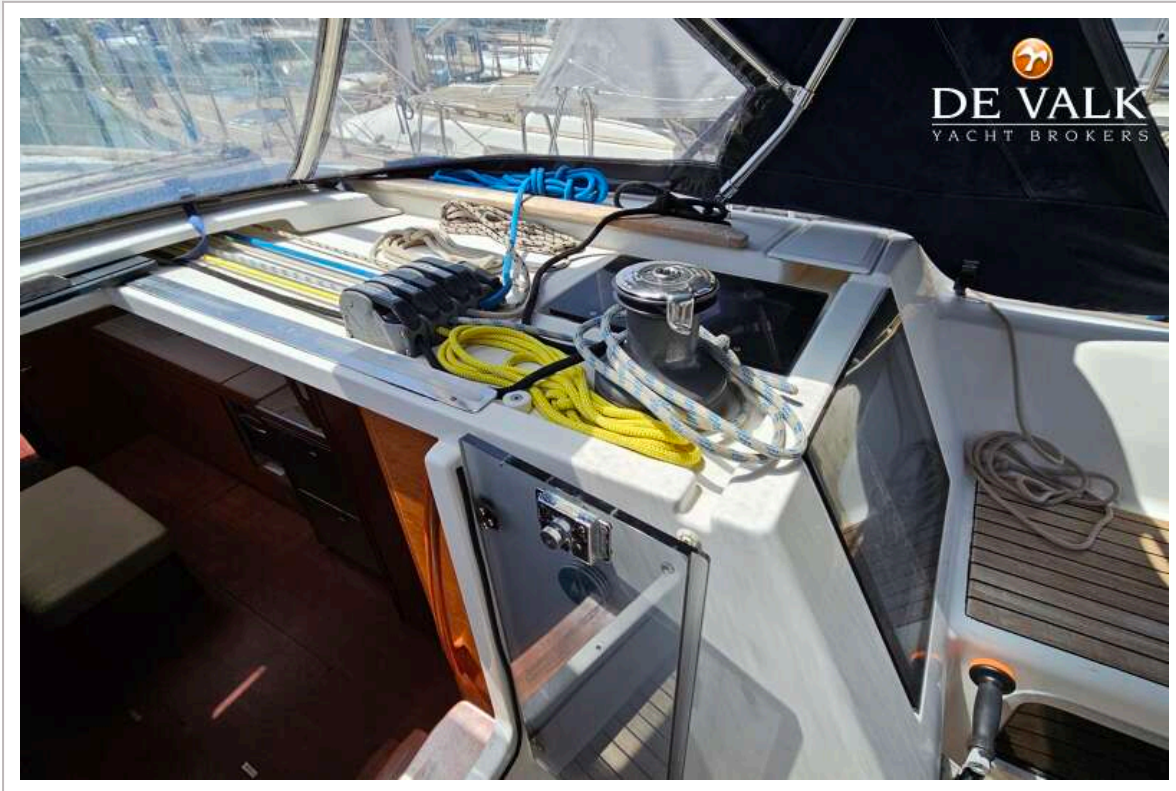
# DUFOUR 460 GRAND LARGE



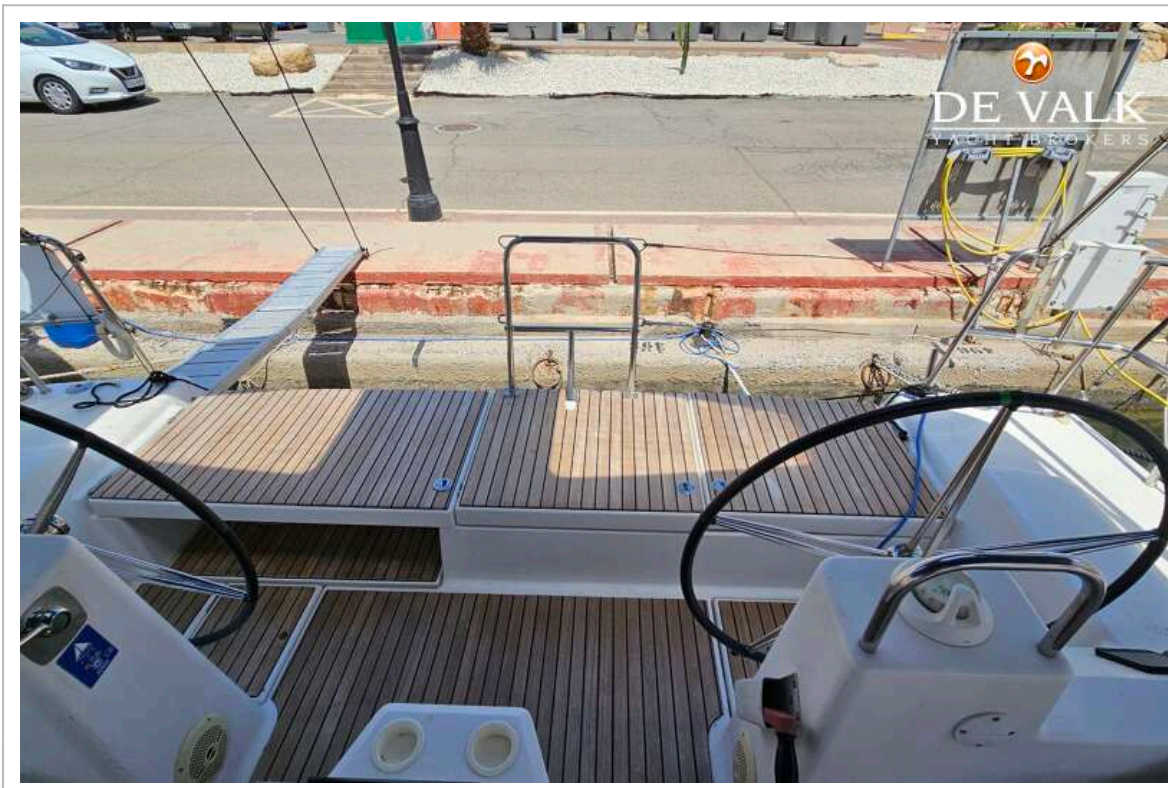
# DUFOUR 460 GRAND LARGE



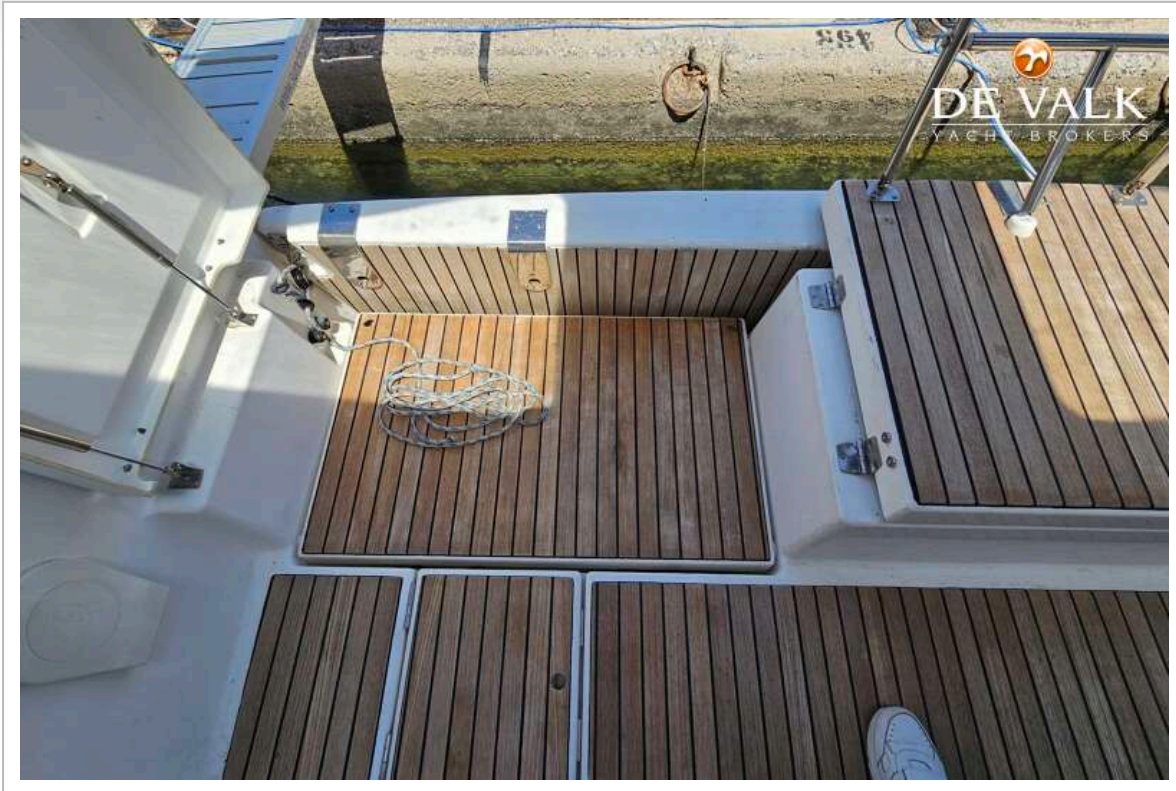
# DUFOUR 460 GRAND LARGE



# DUFOUR 460 GRAND LARGE



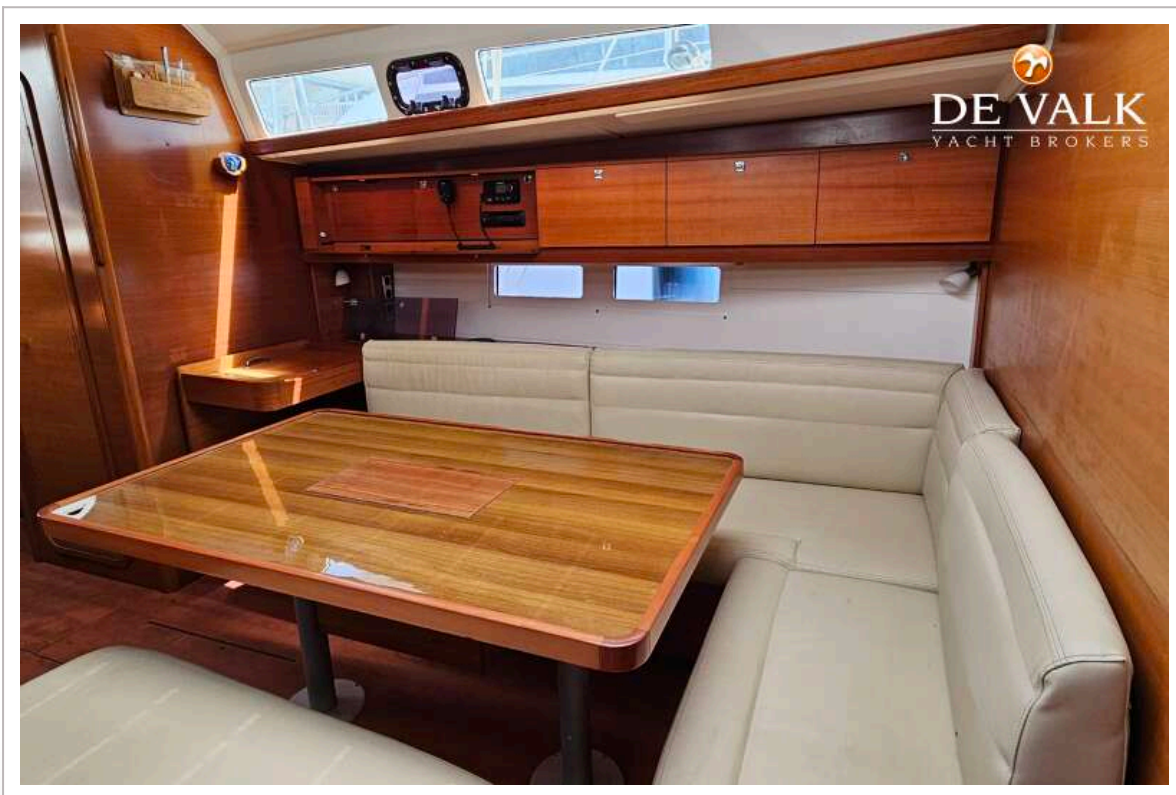
# DUFOUR 460 GRAND LARGE



# DUFOUR 460 GRAND LARGE



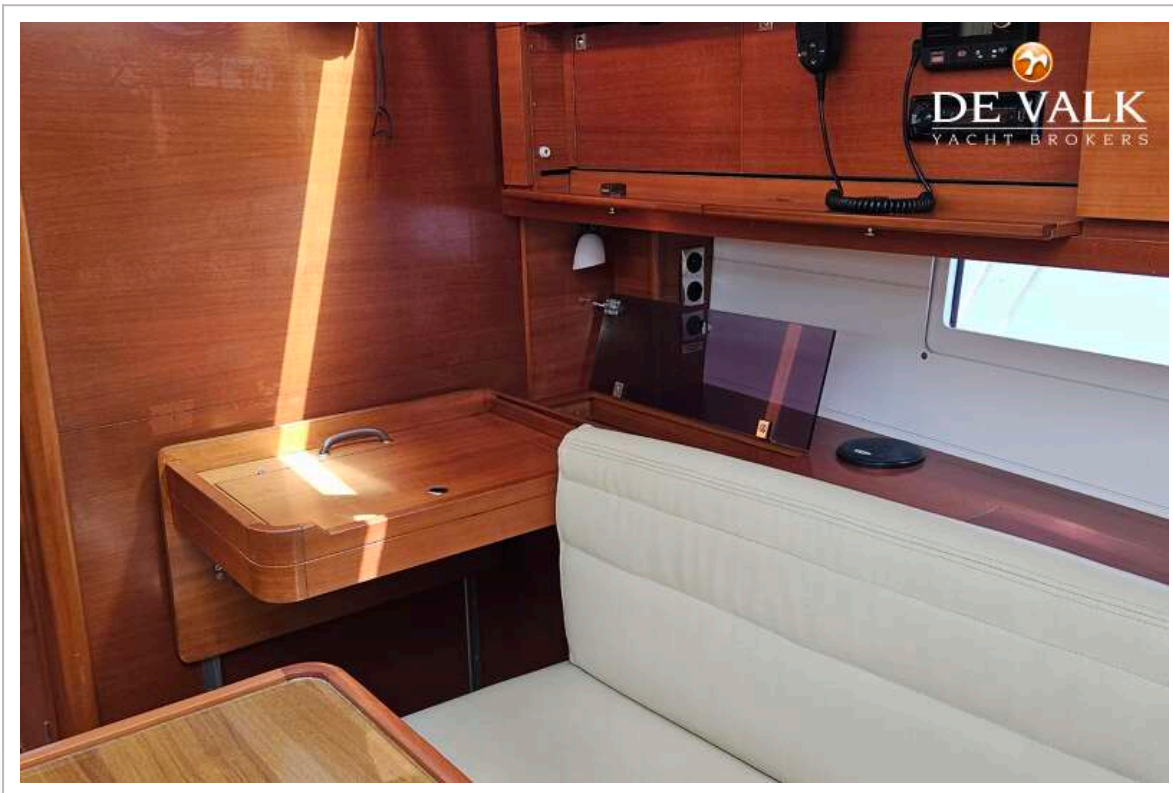
# DUFOUR 460 GRAND LARGE



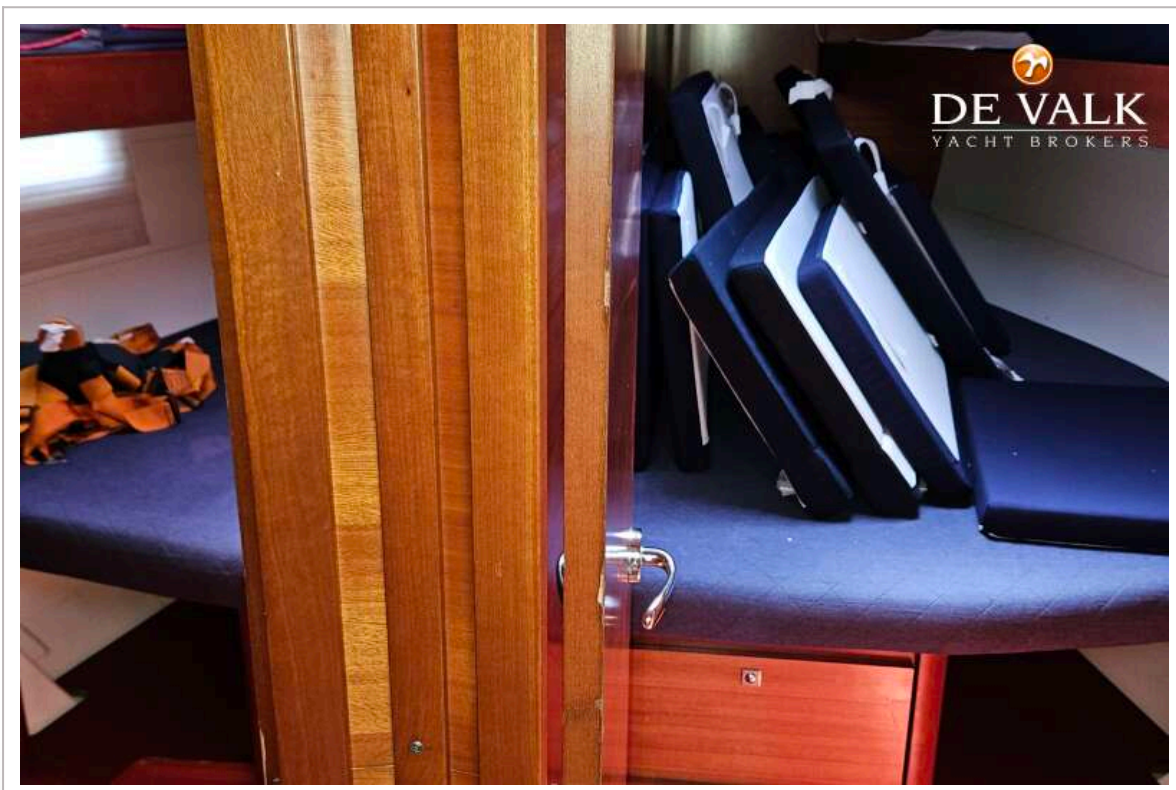
# DUFOUR 460 GRAND LARGE



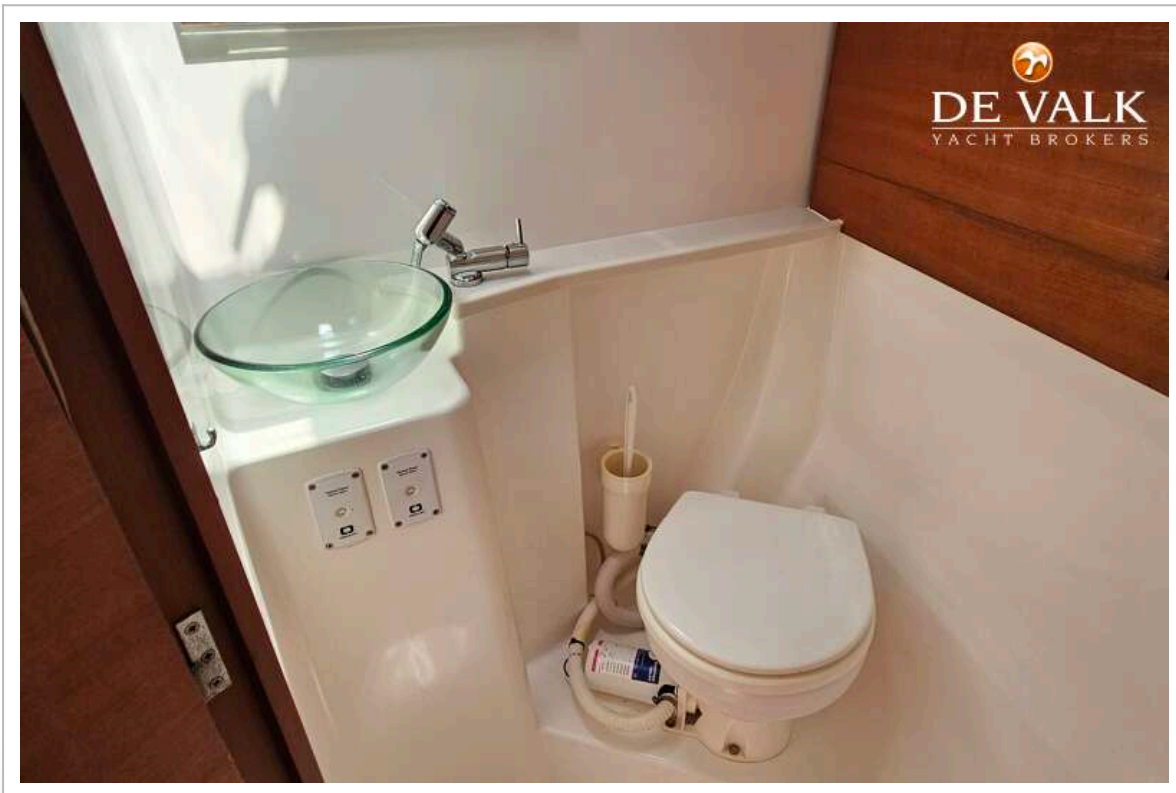
# DUFOUR 460 GRAND LARGE



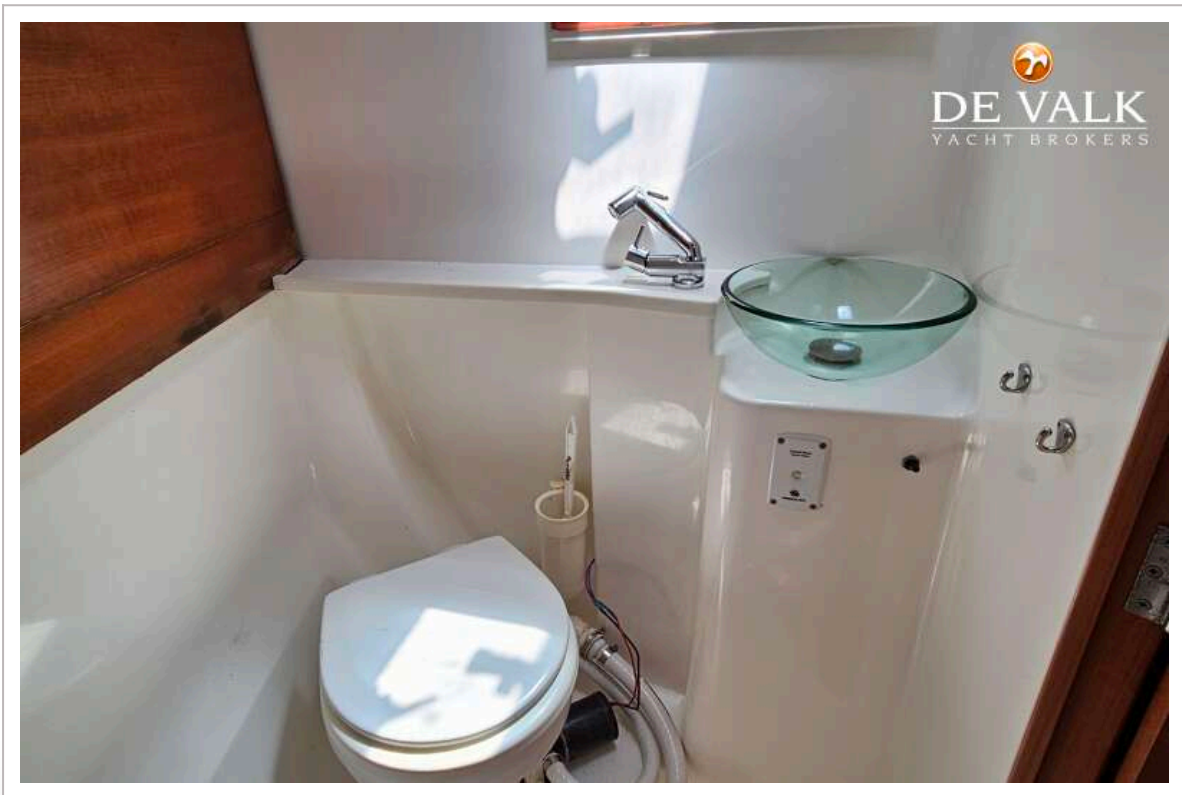
# DUFOUR 460 GRAND LARGE



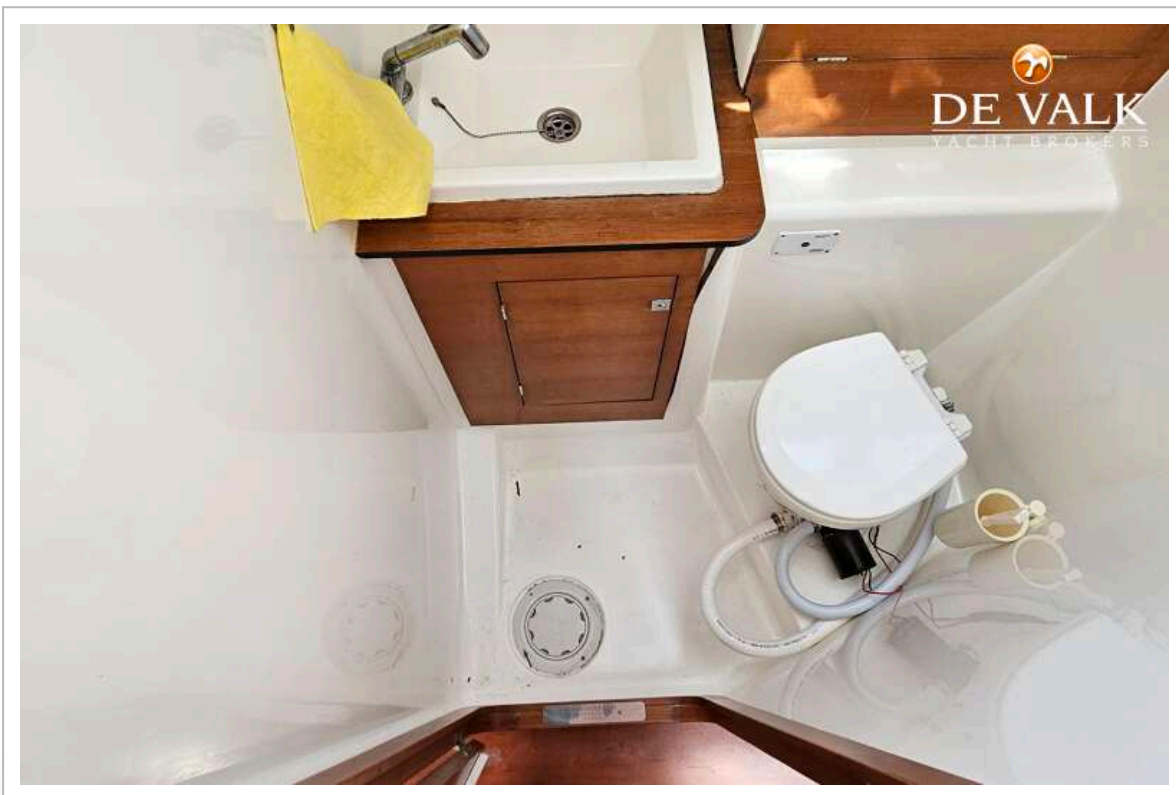
# DUFOUR 460 GRAND LARGE



# DUFOUR 460 GRAND LARGE



# DUFOUR 460 GRAND LARGE



# DUFOUR 460 GRAND LARGE



# DUFOUR 460 GRAND LARGE

