



DE VALK
YACHT BROKERS



SOUTHERLY 110



DE VALK
YACHT BROKERS

BROKERAGE | CHARTER | BERTHS | FINANCE | INSURANCE | YACHT MANAGEMENT

BROKER'S COMMENTS

The Southerly 110 is renowned for her versatile swing keel, allowing excellent performance under sail and access to shallow waters rarely reached by other yachts of this size. This particular Southerly 110 has been well maintained and offers a spacious, light interior, making her ideal for both coastal cruising and extended passages. A superb opportunity to acquire a quality yacht from a respected British builder.

Johan Schootstra

SPECIFICATIONS

Dimensions	10.98 x 3.57 x 2,17 / 0.71 (m)	Builder	Northshore Ltd
Built	2004	Cabins	2
Material	GRP	Berths	7
Engine(s)	1 x Yanmar 3YM30 diesel	Hp/Kw	29.00 (hp), 21.34 (kw)
Asking price	Under Offer (VAT)	Lying	at sales office

CONTACT

Sales office	De Valk Hindeloopen B.V.	Telephone	+31 514 52 40 00
Address	Oosterstrand 1 8713 JS Hindeloopen NL	E-mail	hindeloopen@devalk.nl

DISCLAIMER

These particulars are given in good faith as supplied but cannot be guaranteed.



GENERAL

Model	SOUTHERLY 110
Type	sailing yacht
LOA (m)	10,98
LWL (m)	9,22
Beam (m)	3,57
Draft (m)	0,71
Draft min (m)	2,17
Air draft (m)	14,00
Headroom (m)	1,89
Year built	2004
Builder	Northshore Ltd
Country	United Kingdom
Designer	Rob Humphreys
Displacement (t)	6,8
Ballast (tonnes)	Grounding plate and kiel weight = Total 3075
CE norm	A
Hull material	GRP
Hull colour	Ivory White 9010
Hull shape	round-bilged
Keel type	centreboard Southerly patented swing keel
Superstructure material	GRP
Rubbing strake	yes
Deck material	GRP
Deck finish	non-skid moulded in
Superstructure deck finish	non-skid moulded in
Cockpit deck finish	teak
Antifouling (year)	New antifouling applied every year 2024/2025
Dorades	2x
Deckhatch	4x
Portholes	8x



Fuel tank (litre)	stainless steel 182 ltr.
Level indicator (fuel tank)	Wema
Freshwater tank (litre)	polyethylene 205 ltr.
Level indicator (freshwater)	Wema
Blackwater tank (litre)	polyethylene 45 ltr. new 2019
Level indicator (blackwater)	Wema
Blackwater tank extraction	deck extraction + pump
Wheel steering	mechanical Whithlock Cobra
Emergency tiller	yes
More info on hull	A substantial skeg is fitted along the centerline to protect the propeller and rudders when the yacht is dried out.
Extra info	Hydraulic hoses for lift keel renewed in 2019.
Extra info	Winter storage in a hall

ACCOMMODATION

Cabins	2
Berths	7
Interior	American Cherry
Layout	Excellent all-round visibility, a spacious saloon, open galley, raised chart table, forward cabin, and a generously sized aft cabin.
Floor	teak and holly
Open cockpit	yes
Saloon	yes
Headroom saloon (m)	1,89 - 2 mtr.
Heating	diesel ducted hot air Eberspächer - Airtronic
Navigation center	yes
Chart table	yes
Aft Cabin	Owners cabin with access to the bathroom
Dinette to convert into berth	Height-adjustable saloon table with infill cushion, easily converting into an additional berth.
Galley	Gas inspection 2025



Countertop	Nordstone, peppered stone
Sink	stainless steel double
Cooker	calor gas New 2024 Techimpex 2 burner gas shut off valve
Oven	In cooker
Fridge	Frigoboat
Hot water system	220V + engine
Water pressure system	electrical
Owners cabin	double bed aft cab 2 LED reading lights stainless steel new 2021
Bed length (m)	2 mtr.
Wardrobe	hanging and shelves
Bathroom	shared
Toilet	Jabsco Plumbing hoses new 2019
Toilet system	manual
Wash basin	yes
Shower	yes
Guest cabin 1	double bed forward cabin Convertible into a double bed.
Bed length (m)	2 mtr.
Wardrobe	hanging and shelves
Extra info	LED Cabin lighting throughout
Extra info	The yacht offers a total of 7 berths: a convertible single-to-double berth in the forecabin (to port), two comfortable berths in the aft cabin, and three in the saloon - comprising a double berth created from the settee and table conversion, plus an additional single settee berth.

MACHINERY

No of engines	1
Make	Yanmar
Type	3YM30
HP	29
kW	21.34



Fuel	diesel
Year installed	2004
Maximum speed (kn)	7
Cruising speed (kn)	6
Consumption (l/hr)	2,5
Engine cooling system	freshwater heat exchanger
Drive	shaft
Engine controls	bowden cable
Gearbox	mechanical
Bowthruster	55kg with control mounted at helm
Exhaust	watercooled
Propeller type	folding
Propeller blades	3
Propeller shaft material	stainless steel
Shaft lubrication	water
Manual bilge pump	1x
Electric bilge pump	1x Rule
Electrical installation	12 and 220 Volt
Start battery	1x 95Ah
Service battery	2x Varta AGM 85Ah new 2022
Bowthruster battery	New 2022 55Ah
Battery monitor	Sterling battery management panel
Battery charger	Sterling Power 1230 12 volt 30Ah
Solar panel	yes
Diode battery combiners	Victron isolating diode battery charge splitter renewed in 2022
Shorepower	with cable
Extra info	Professionally serviced engine every year

NAVIGATION

Compass	Plastimo WhitLock Olympic 135
Multi control display	Raymarine ST60 Multi + Raymarine ST60 Graphic



Depth sounder	Raymarine ST60+ Depth
Log	Raymarine ST60+ Speed
Windset	Raymarine ST60+ Wind
VHF	Icom IC-M601
Autopilot	Raymarine ST6001
Radar	Raytheon SL70 - software is no longer supported
Radar/GPS/plotter	Raymarine Axiom 9 new 2023
Navtex	Furuno NX-300
AIS receiver	Digital Yacht AIS100 dual Channel receiver
Navigation lights	Full navigation light system, incorporating bow light, stern light, masthead tricolour light with all round white anchor light, deck flood light and steaming light.

EQUIPMENT

Sprayhood with grab rail	yes
Cockpit table	yes
Bathing platform	yes
Boarding ladder	yes
Deck shower	New 2020 hot and cold water
Anchor	Bruce 15kg
Anchor chain	40 mtr.
Windlass	electrical S&L
Capstan	yes
Outboard support	Mounted on pushpit
Sea railing	yes
Grab rail (superstructure)	stainless steel
Railing side opening gates	On both sides
Pushpit	yes
Pulpit	yes
Life raft	OceanSafety new 2019
Life raft (pers)	6
Last life raft survey	Life raft serviced in 2024, next service due 04/2027.



Safety harness	yes
Rope cutter	Ambassador AM10
Radar reflector	Fitted on the mast
Fenders	yes
Mooring lines	yes
Radio-cd player	Alpine
Cockpit speakers	yes
Speakers in salon	yes
Clock - barometer	Plastimo
Fire extinguisher	2x

RIGGING

Rigging	sloop tall masthead rig
Standing rigging	wire new 2019
Brand mast	Seldén
Material mast	aluminium
Spreaders	2 pair
Mainsail	Dacron sails Lazy Jacks for mainsail
Mainsail cover	yes
Fully battened mainsail	Four battens and mast sliders
Genoa	Dacron sails new UV protection strip 2024
Cutter furler	Furlex 200 S
Gennaker	Asymmetric, blue and yellow, recovery tube
Reefing System	quick-one-line-reefing led to aft cockpit
Backstay adjuster	mechanical
Boomvang	gasspring
Genoa sheetwinches	2x Lewmar 44ST
Halyard winches	2x Lewmar 16ST
Reefing winch	Lewmar 16 ST on mast
Spi-pole	aluminium new 2020



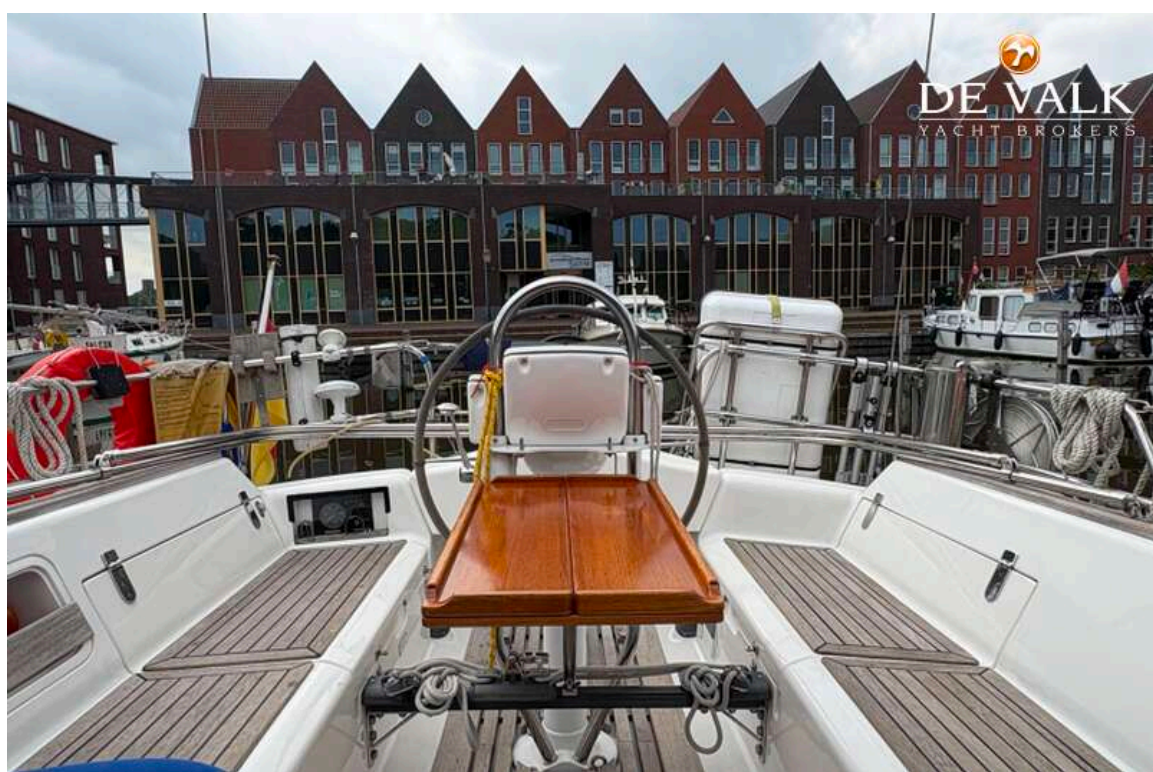
SOUTHERLY 110



SOUTHERLY 110



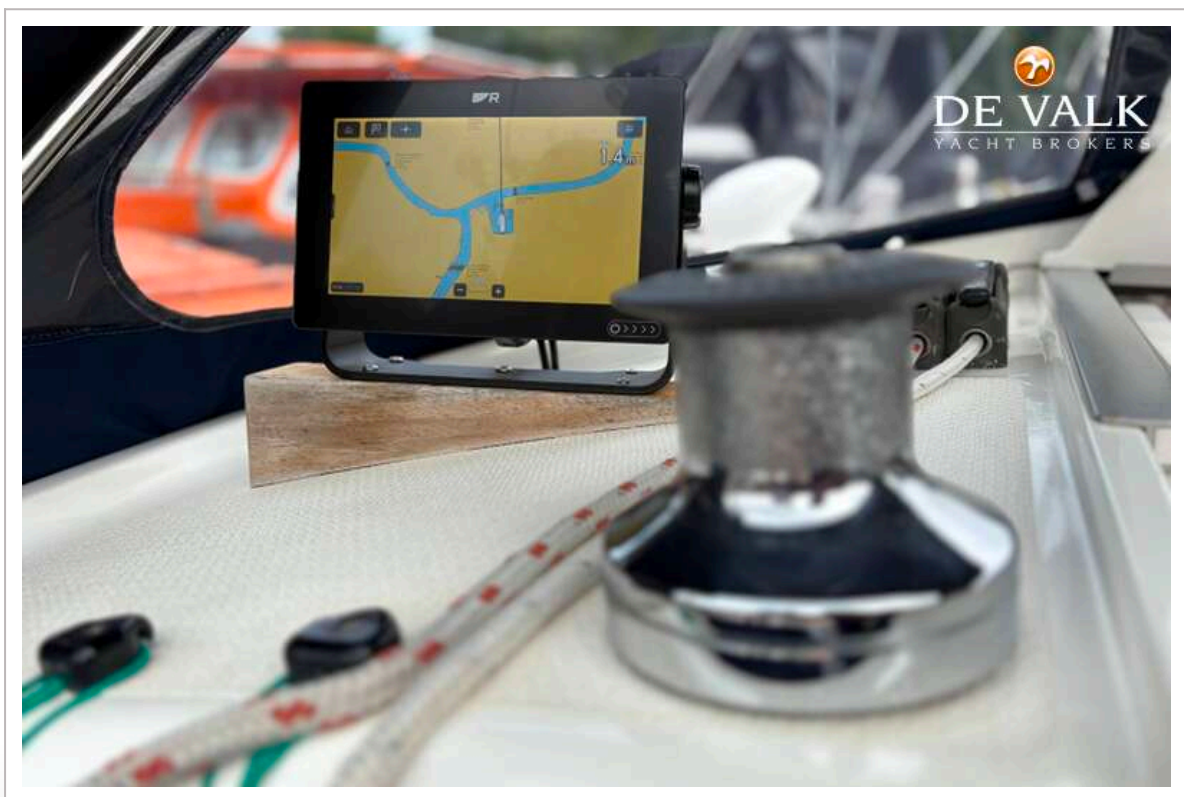
SOUTHERLY 110



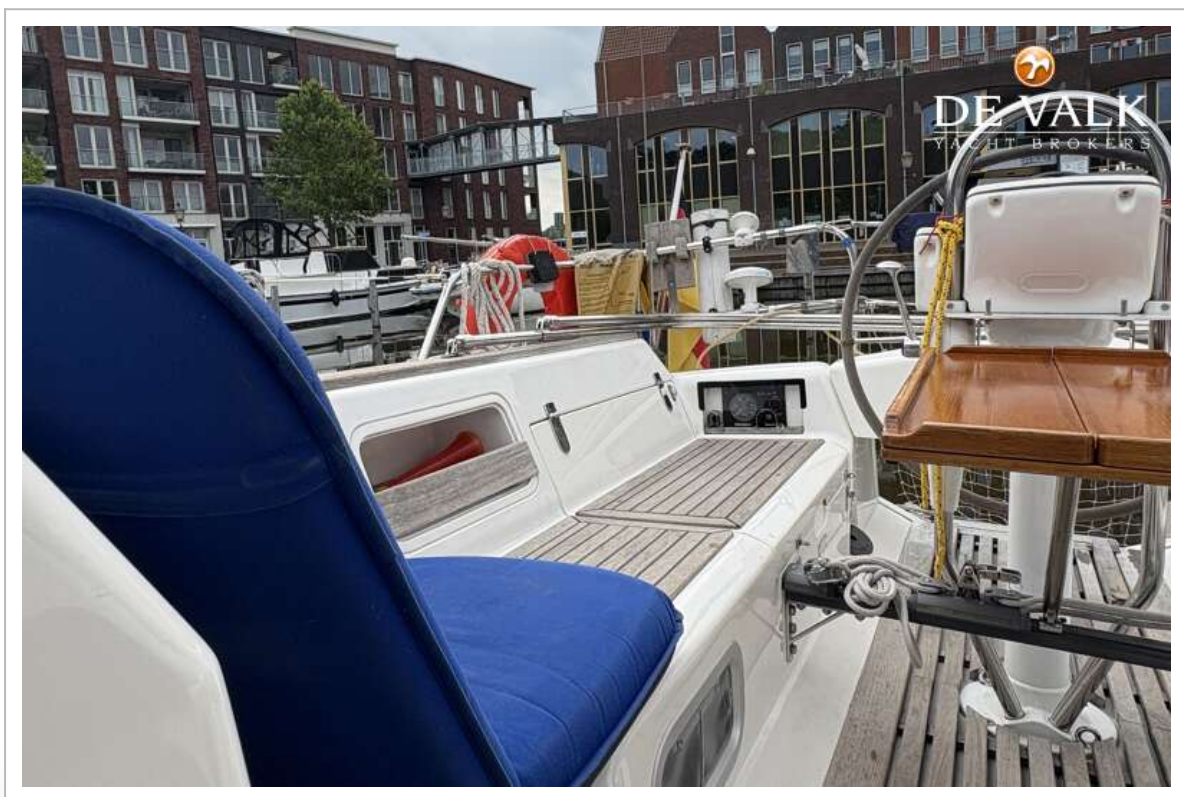
SOUTHERLY 110



SOUTHERLY 110



SOUTHERLY 110



SOUTHERLY 110



SOUTHERLY 110



SOUTHERLY 110



SOUTHERLY 110



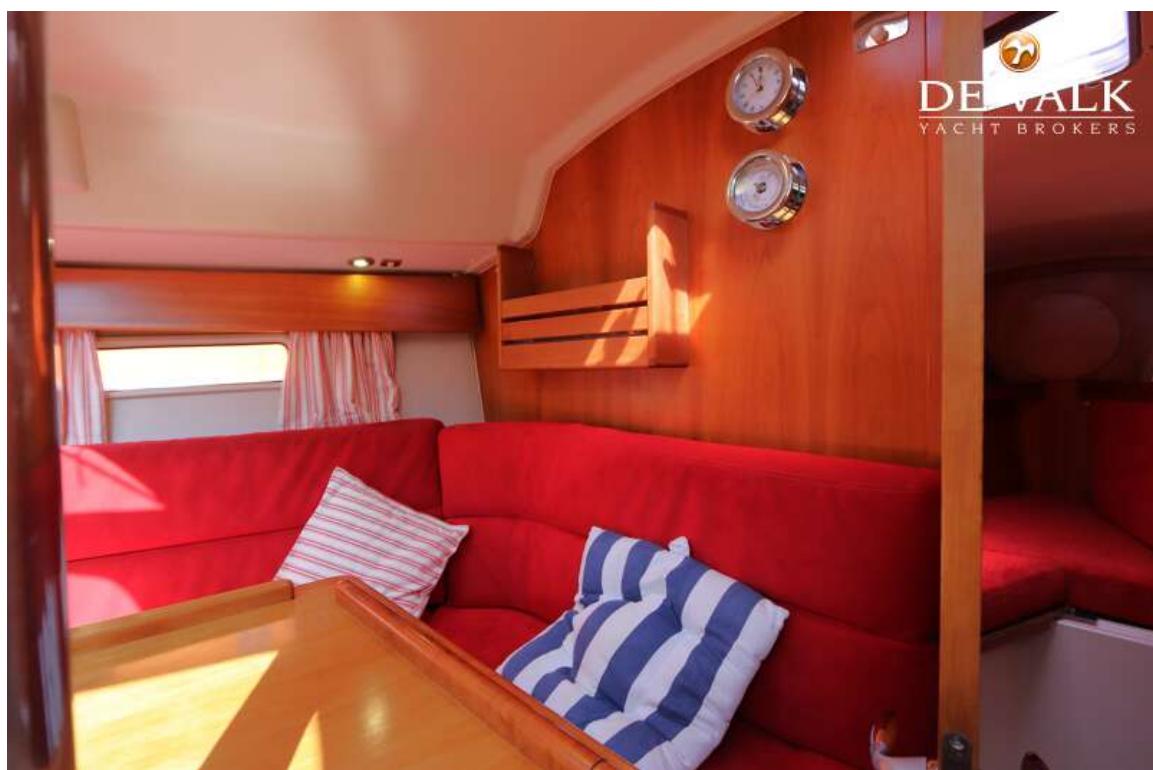
SOUTHERLY 110



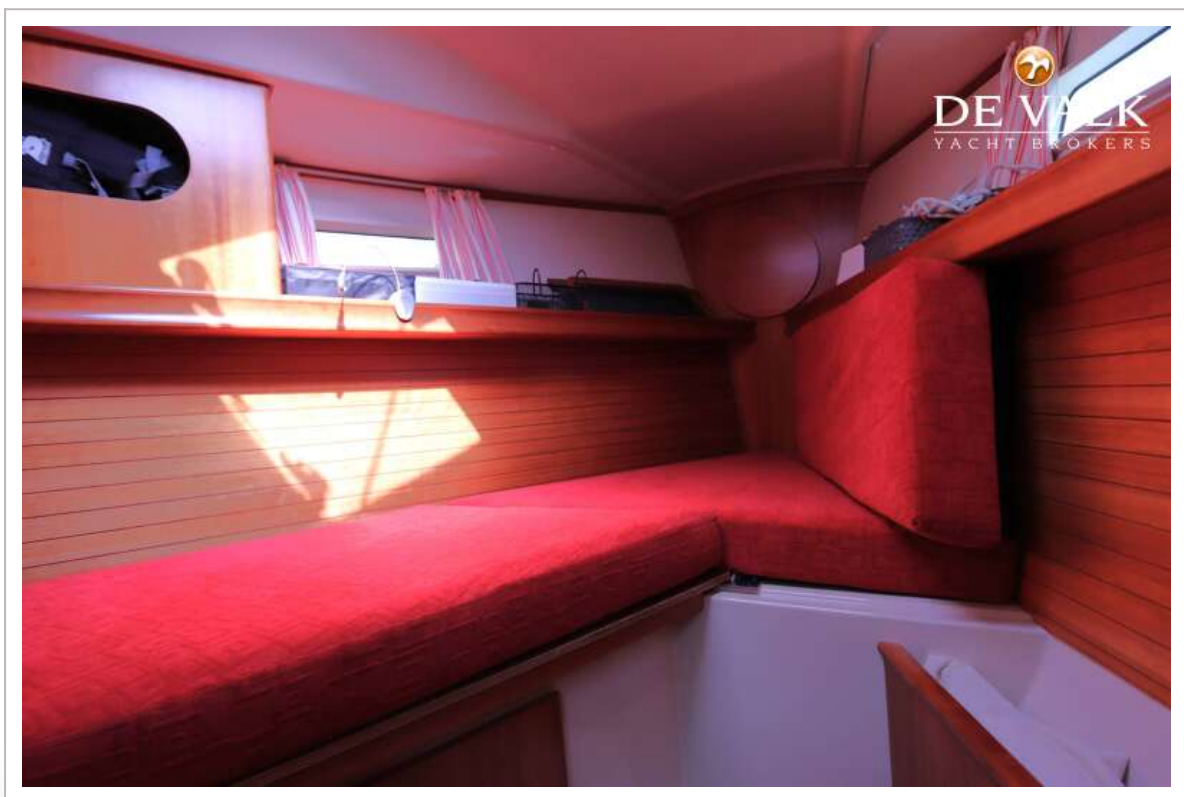
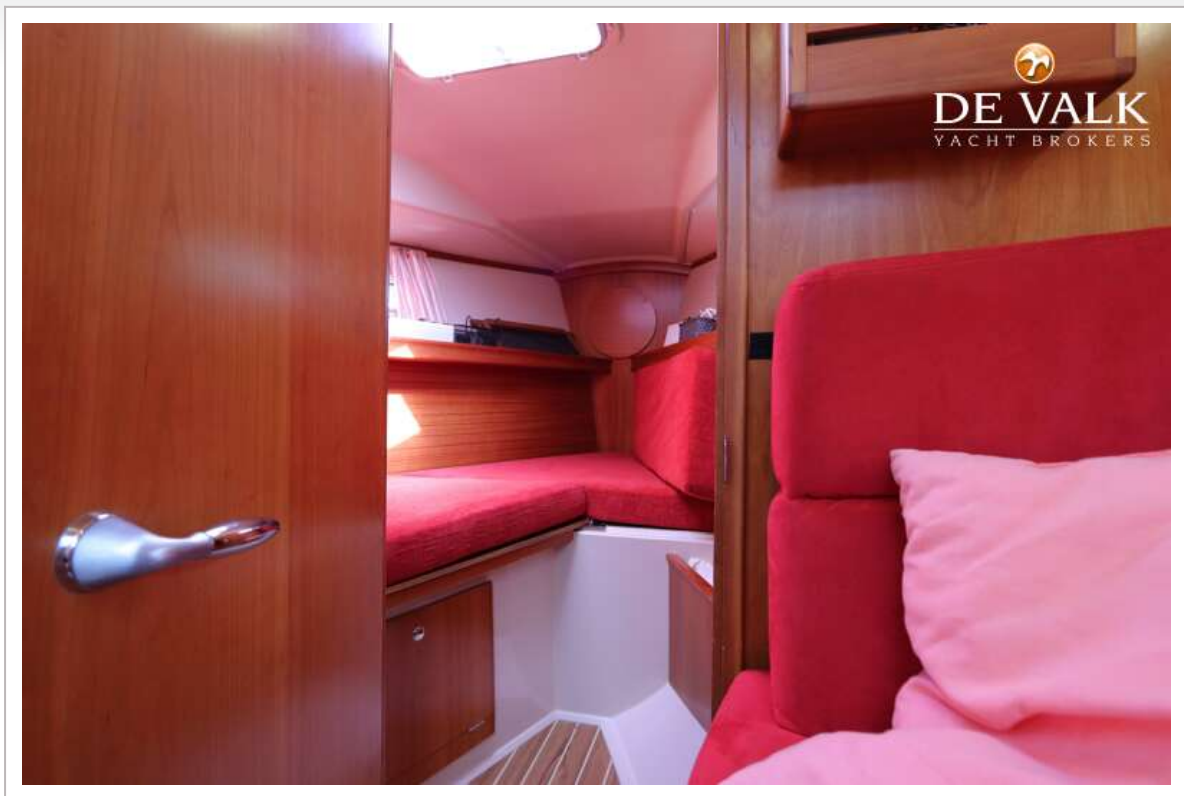
SOUTHERLY 110



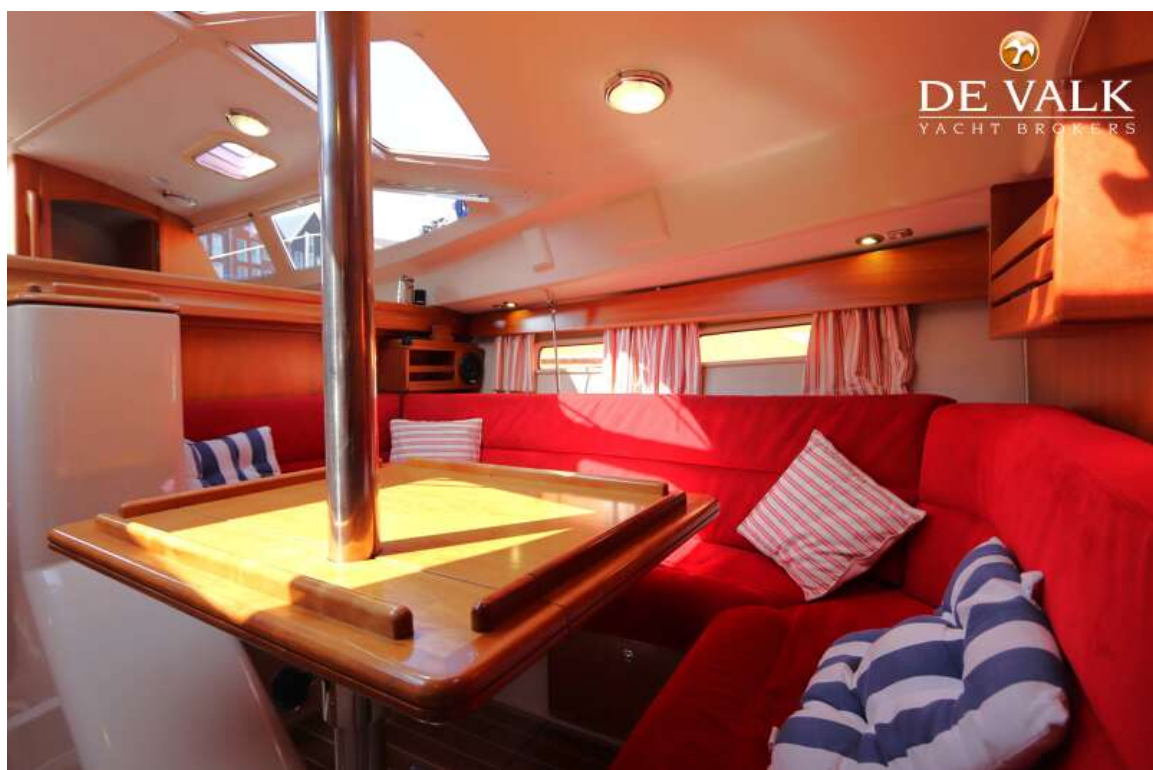
SOUTHERLY 110



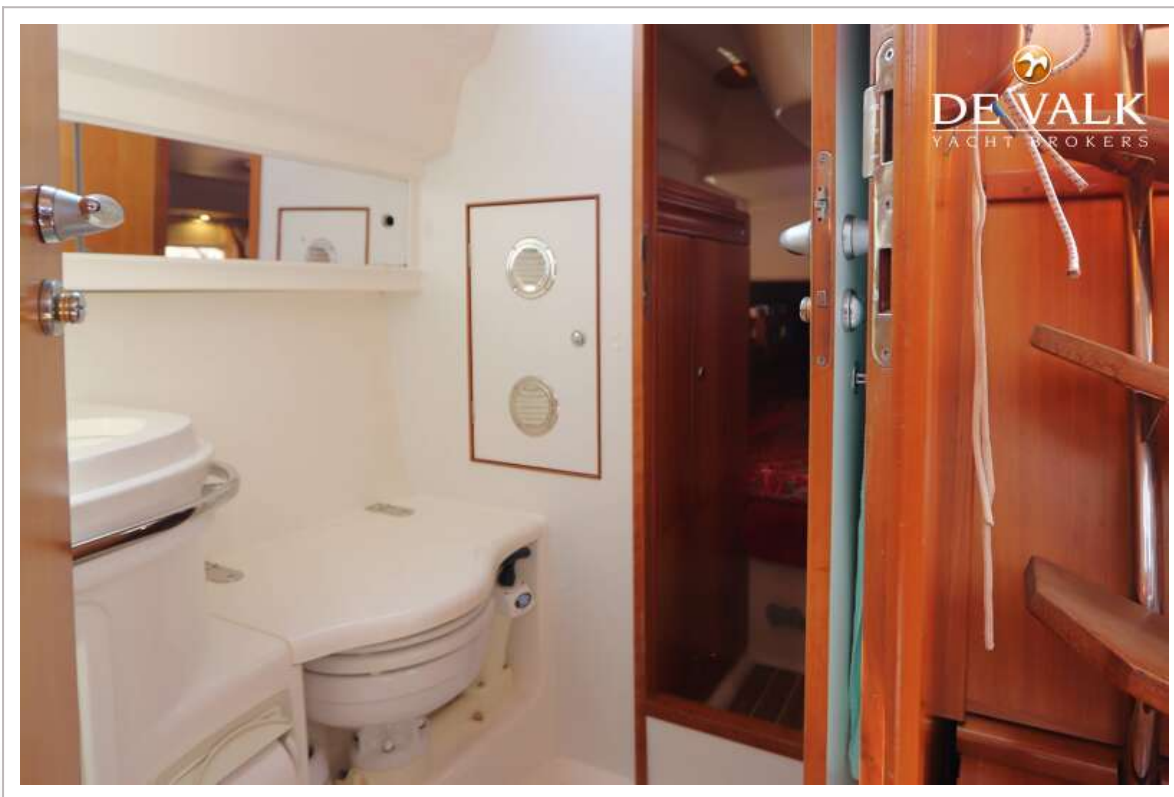
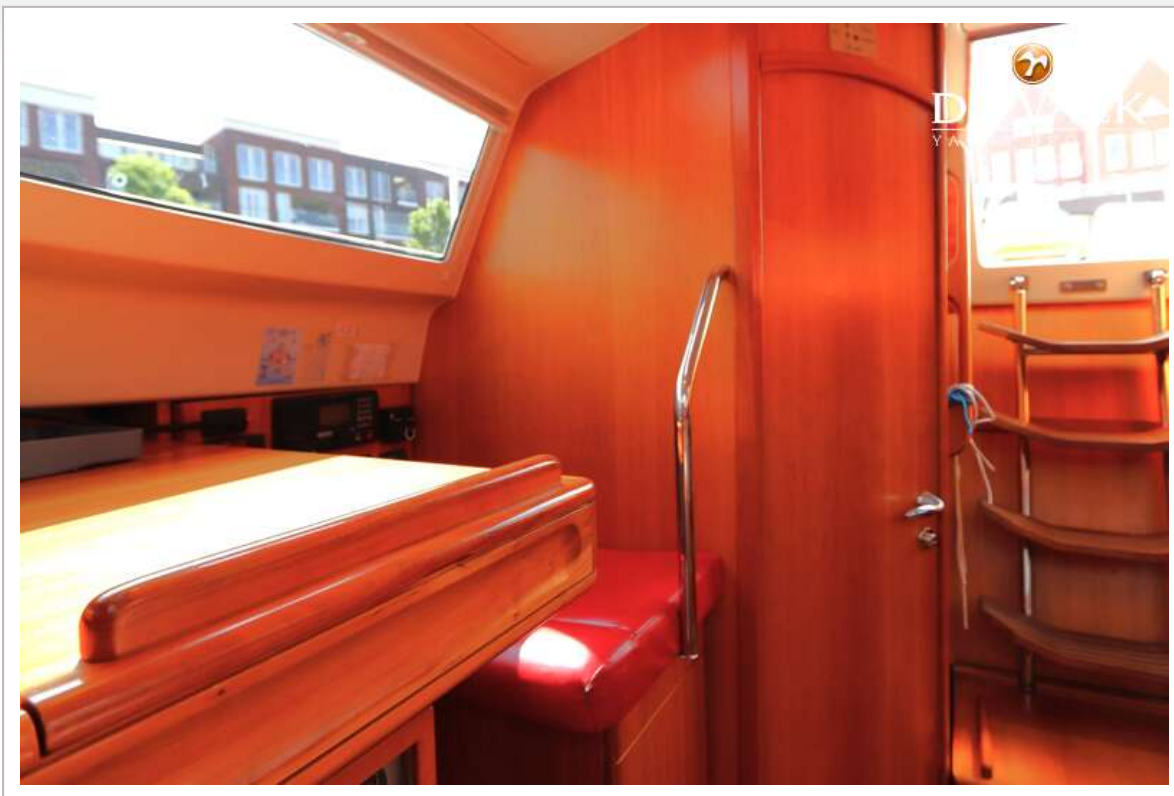
SOUTHERLY 110



SOUTHERLY 110



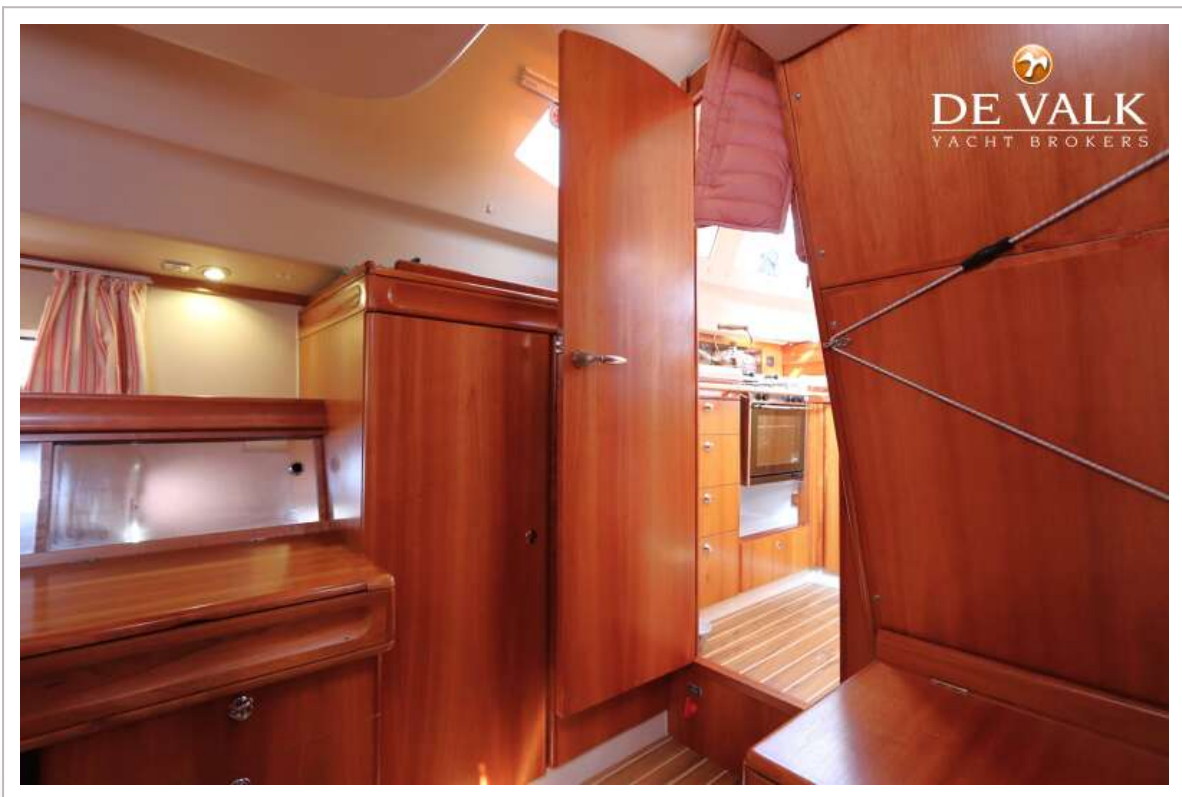
SOUTHERLY 110



SOUTHERLY 110



SOUTHERLY 110



SOUTHERLY 110

