



PRINCESS 60 FLYBRIDGE

PRINCESS 60 FLYBRIDGE

BROKER'S COMMENTS

Step aboard this stunning Princess 60 Flybridge from 1998 and experience ultimate luxury on the water. With a length of 18.70 meters, she offers spacious living areas, including 3 cabins, a crew cabin, and a stylish saloon with cherry wood finishes. Powered by two robust MAN engines (800 HP), she is perfect for long journeys. Highlights include a renewed bimini top, Kabola heating, a fully equipped kitchen with a Bosch dishwasher, and modern navigation equipment. Now available for viewing in Loosdrecht.

Sjoerd Paddenburg

SPECIFICATIONS

Dimensions	18.70 x 4.80 x 1.25 (m)	Builder	Princess Yachts
Built	1998	Cabins	3
Material	GRP	Berths	6
Engine(s)	2 x MAN D2848LE403 diesel	Hp/Kw	2 x 800.00 (hp), 588.80 (kw)
Asking price	sold (VAT)	Lying	at sales office

CONTACT

Sales office	De Valk Loosdrecht B.V.	Telephone	+31 (0)35 582 90 30
Address	't Breukeleveense Meentje 6 1231LM Loosdrecht / Wijdmeren NL	E-mail	loosdrecht@devalk.nl

DISCLAIMER

These particulars are given in good faith as supplied but cannot be guaranteed.



PRINCESS 60 FLYBRIDGE

GENERAL

Model	PRINCESS 60 FLYBRIDGE
Type	motor yacht
LOA (m)	18,70
Beam (m)	4,80
Draft (m)	1,25
Headroom (m)	2,20
Year built	1998
Builder	Princess Yachts
Country	United Kingdom
CE norm	B
Hull material	GRP
Hull colour	white
Hull shape	deep-V
Superstructure material	GRP
Rubbing strake	stainless steel
Deck material	GRP
Deck finish	synthetic teak
Superstructure deck finish	non-skid moulded in
Cockpit deck finish	synthetic teak
Window frame	stainless steel
Window material	tempered glass
Deckhatch	yes
Portholes	stainless steel 8x
Flybridge	yes
Flybridge cover	yes
Flybridge suncover	yes
Radar arch	non collapsible
Fuel tank (litre)	2800 L
Level indicator (fuel tank)	VDO
Freshwater tank (litre)	680 L



PRINCESS 60 FLYBRIDGE

Level indicator (freshwater)	WEMA
Blackwater tank (litre)	yes
Level indicator (blackwater)	WEMA
Inside helm position	yes
Flybridge helm position	yes

ACCOMMODATION

Cabins	3
Berths	6
Crew cabin	1
Crew berths	2
Interior	cherry
Floor	carpet Brown
Open cockpit	yes
Saloon	yes
Heating	central heating 14 Kw Kabola
Dinette	yes
Sliding door to cockpit	yes
Galley	yes
Sink	stainless steel
Cooker	ceramic 4 pits
Microwave/oven combi	yes
Fridge	yes
Freezer	yes
Hot water system	220V + engine
Water pressure system	electrical
Dishwasher	Bosch
Ice maker	yes
Owners cabin	French bed
Wardrobe	hanging/drawers/shelves
Bathroom	en suite



PRINCESS 60 FLYBRIDGE

Toilet	en suite
Toilet system	electric Jabsco
Wash basin	in the bathroom
Shower	en suite
Guest cabin 1	twin single
Guest cabin 2	twin single
Washing machine	Philips
Flybridge	yes
Wet bar	yes
Extra info	New Bimini top

MACHINERY

No of engines	2
Make	MAN
Type	D2848LE403
HP	800
kW	588.80
Fuel	diesel
Engine hours	1736
Engine cooling system	freshwater heat exchanger
Drive	shaft
Engine controls	yes
Gearbox	hydraulic
Engine controls	electrical
Bowthruster	electric
Sternthruster	electric
Electric bilge pump	yes
Electrical installation	yes
Generator	Kohler 11 KW
Battery monitor	Victron
Battery charger/inverter	Victron Quattro 24V 5000W 120A



Diode battery combiners	yes
Shorepower	with cable
Trimtabs	yes

NAVIGATION

Compass	yes
Compass on flybridge	yes
Electric compass	yes
Depth sounder/log	Raymarine
Autopilot	Raymarine
Radar	Furuno
GPS	Shipmate
Plotter/GPS	yes
Radar/GPS/plotter	yes
AIS transceiver	yes
Navigation lights	yes
Searchlight	Sanshin

EQUIPMENT

Fixed windscreen	yes
Bimini	yes
Cockpit cushions	yes
Cockpit table	yes
Cockpit chairs	yes
Bathing platform	yes
Boarding ladder	yes
Bow ladder	yes
Gangway	yes
Deck shower	yes
Anchor	yes
Windlass	electrical Lewmar



PRINCESS 60 FLYBRIDGE

Deck wash	yes
Sea railing	stainless steel
Grab rail (superstructure)	stainless steel
Wiper	3x
Fenders	yes
Mooring lines	yes
TV	yes
Radio	Fusion



PRINCESS 60 FLYBRIDGE



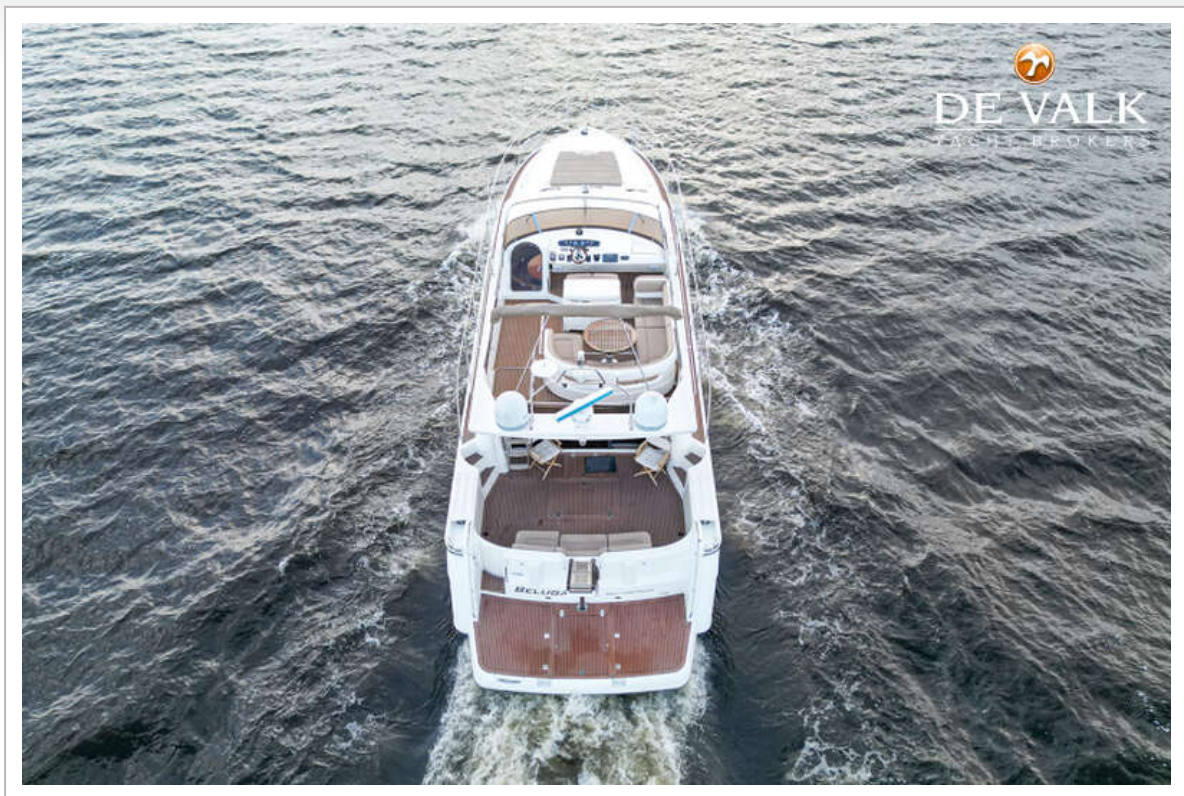
PRINCESS 60 FLYBRIDGE



PRINCESS 60 FLYBRIDGE



PRINCESS 60 FLYBRIDGE



PRINCESS 60 FLYBRIDGE



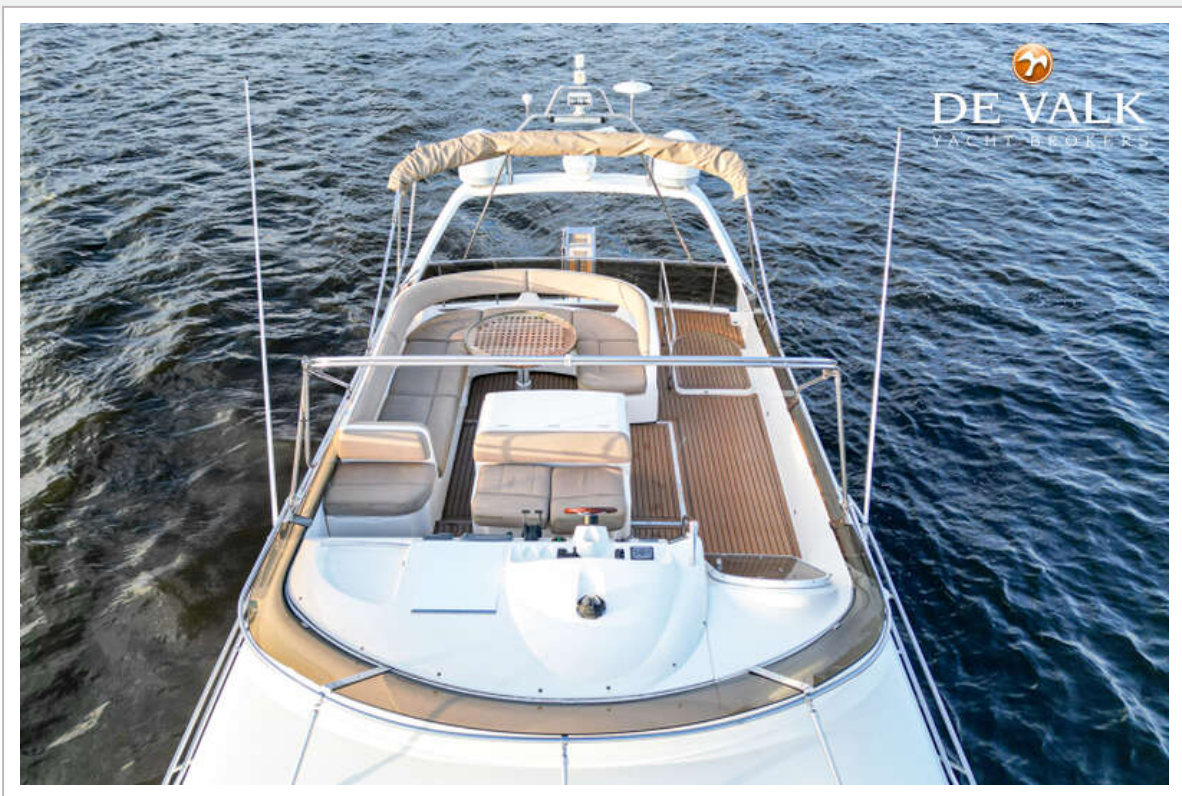
PRINCESS 60 FLYBRIDGE



PRINCESS 60 FLYBRIDGE



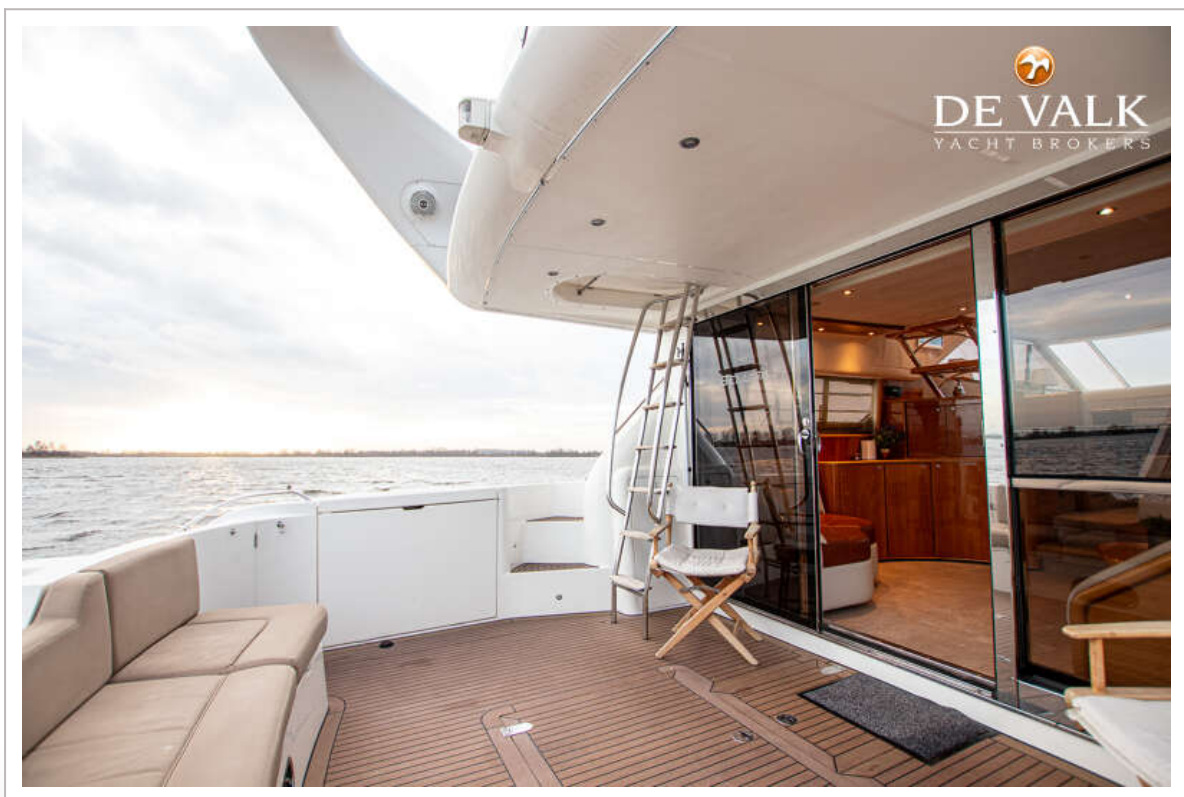
PRINCESS 60 FLYBRIDGE



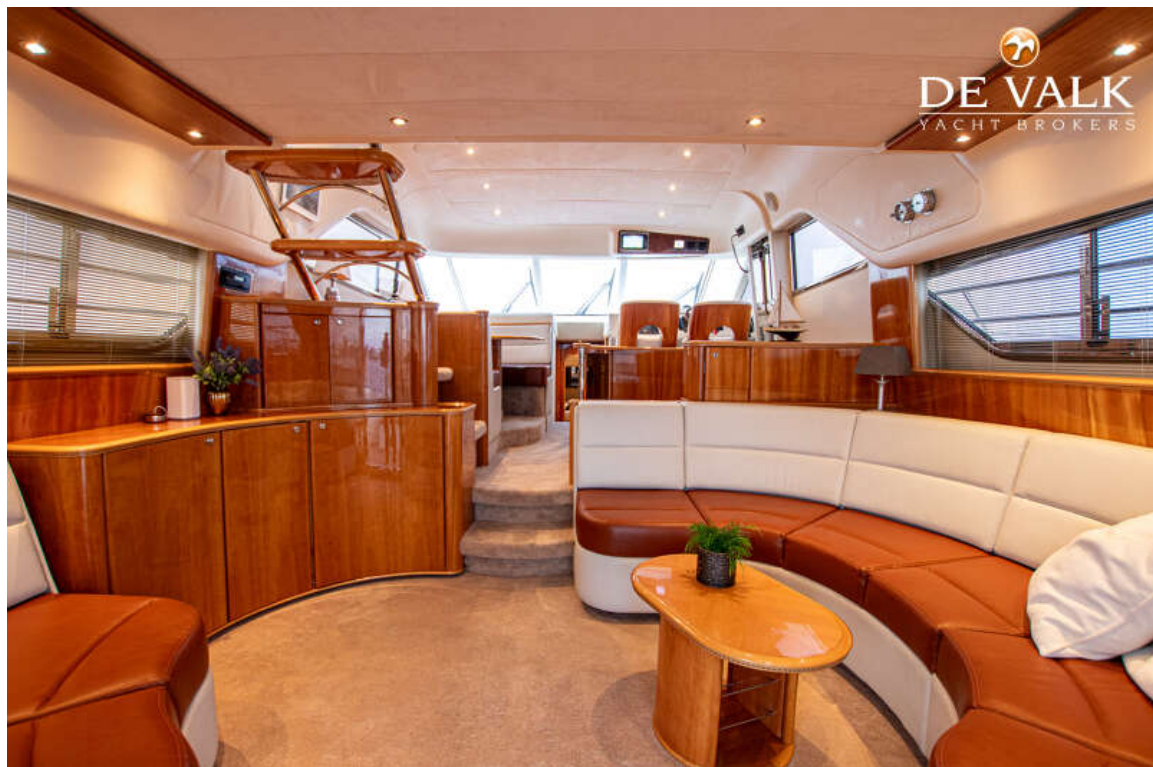
PRINCESS 60 FLYBRIDGE



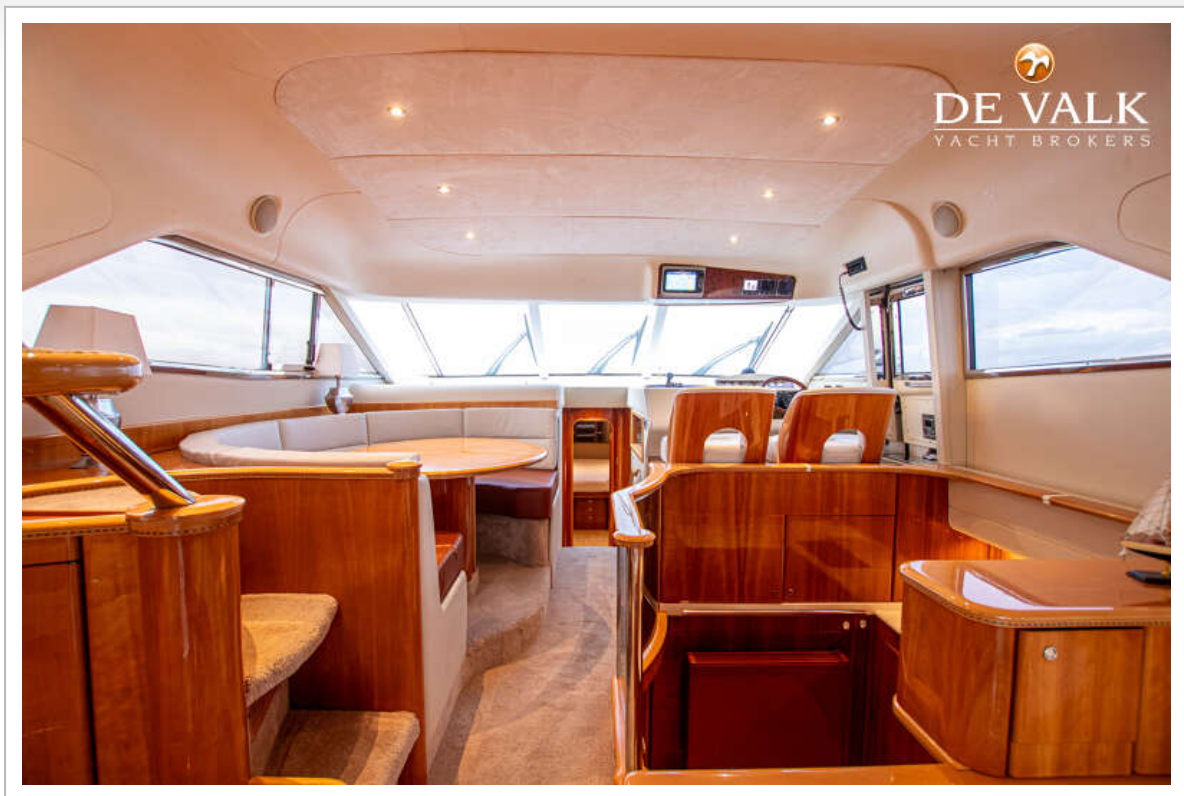
PRINCESS 60 FLYBRIDGE



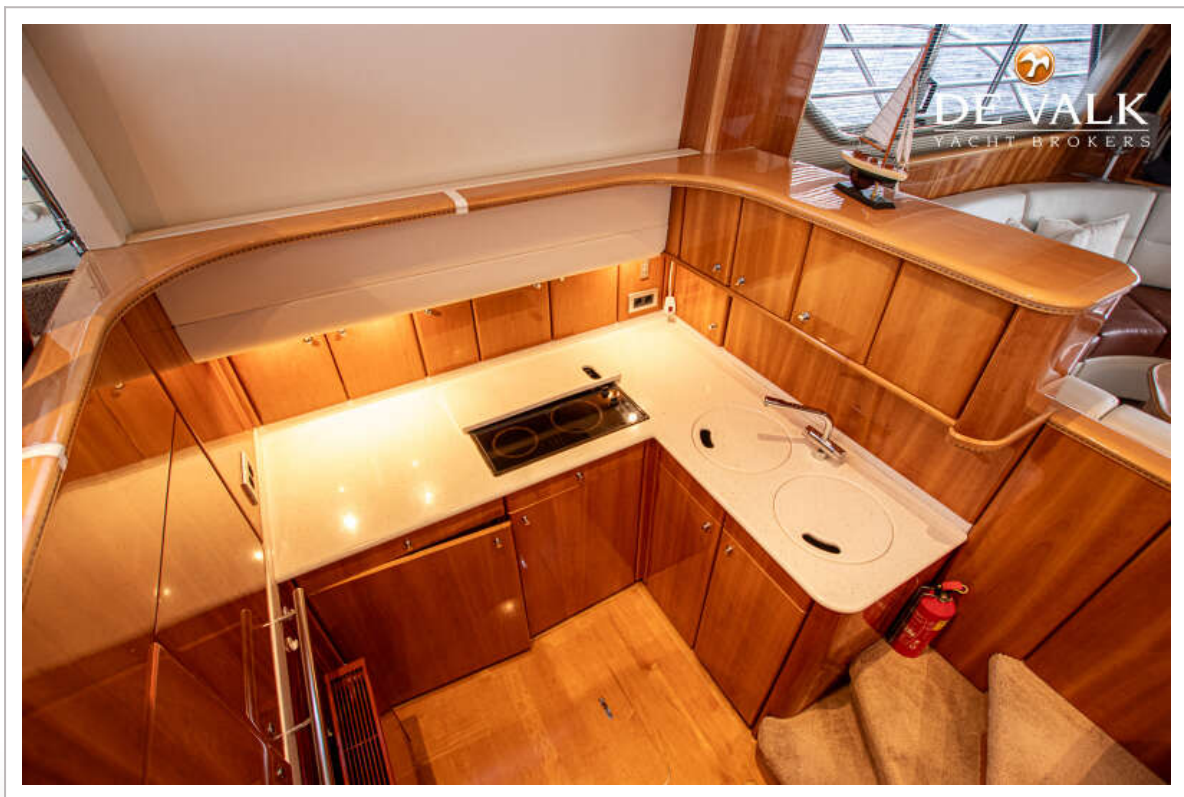
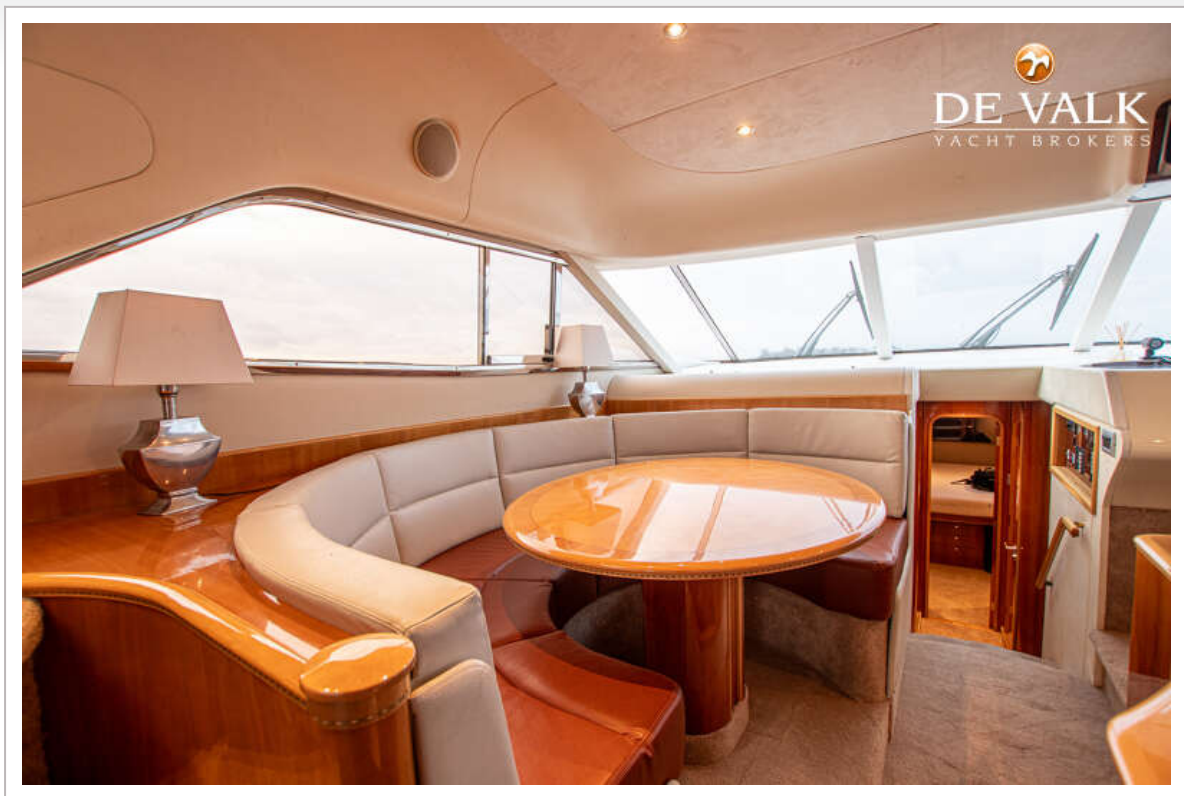
PRINCESS 60 FLYBRIDGE



PRINCESS 60 FLYBRIDGE



PRINCESS 60 FLYBRIDGE



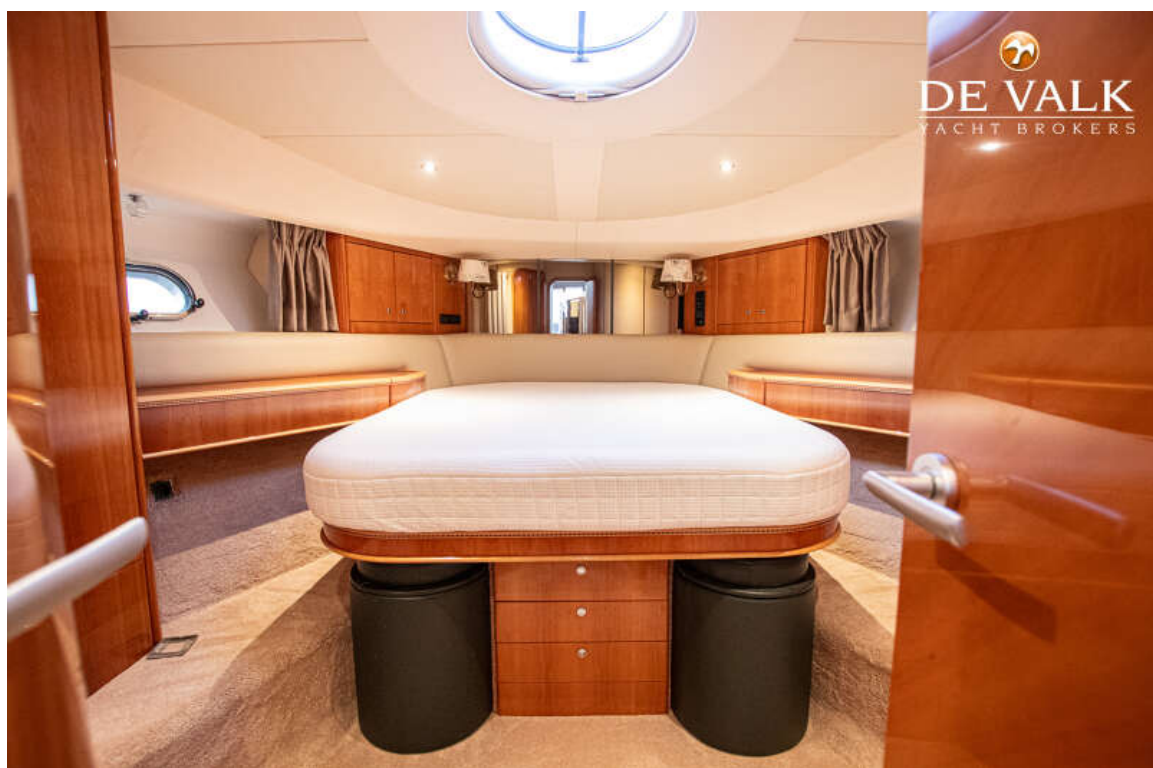
PRINCESS 60 FLYBRIDGE



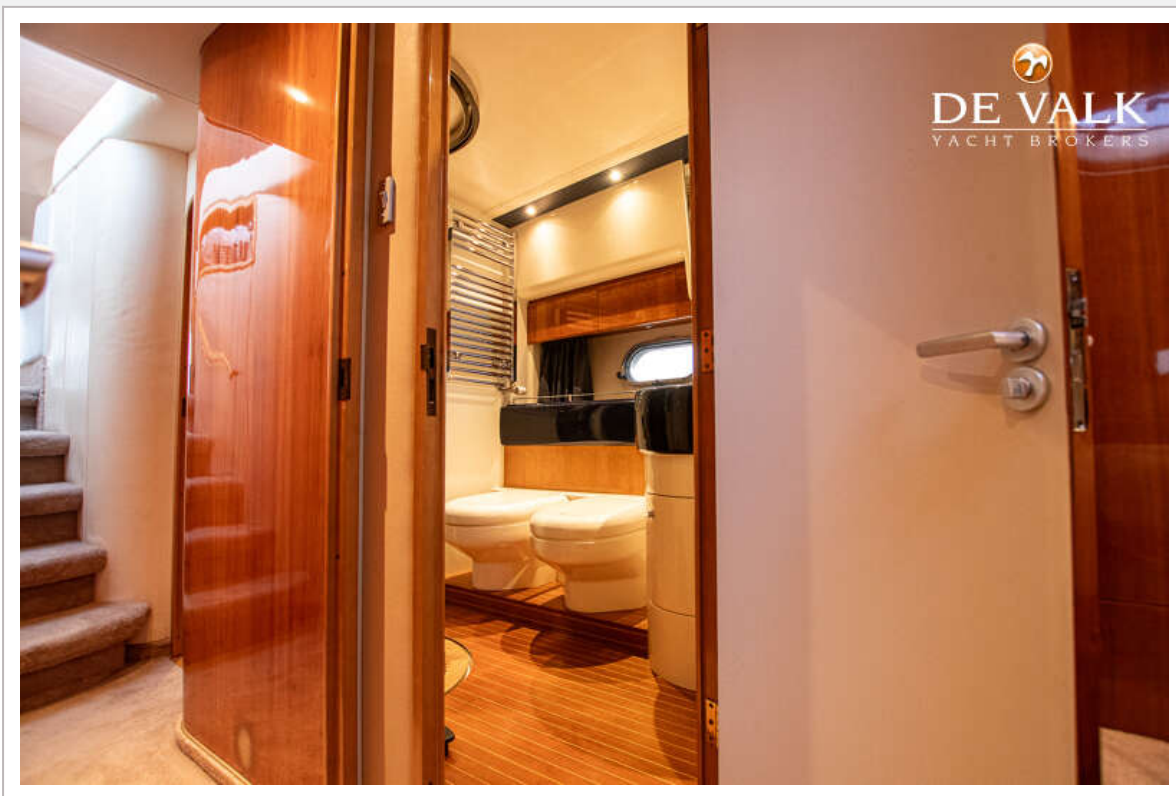
PRINCESS 60 FLYBRIDGE



PRINCESS 60 FLYBRIDGE



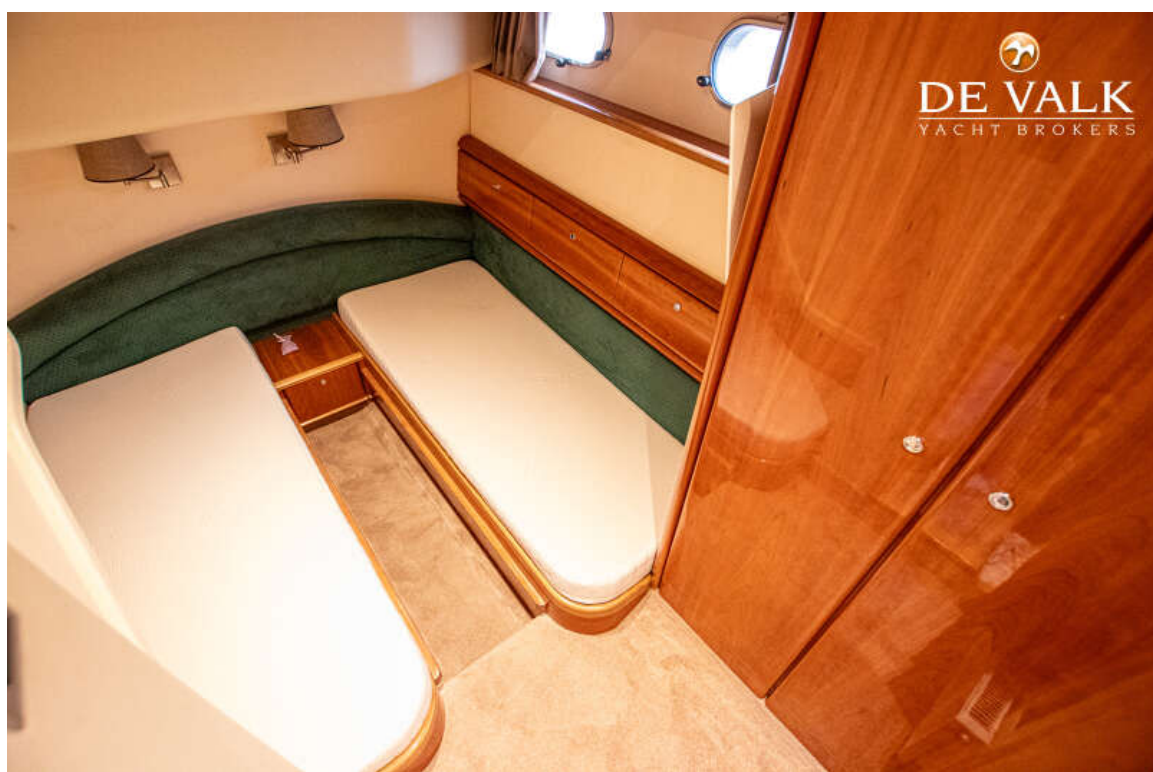
PRINCESS 60 FLYBRIDGE



PRINCESS 60 FLYBRIDGE



PRINCESS 60 FLYBRIDGE



PRINCESS 60 FLYBRIDGE

