



NORDIA 70 PERFORMANCE CRUISER



NORDIA 70 PERFORMANCE CRUISER

BROKER'S COMMENTS

True to her name and one of few hulls ever built, this 70' Nordia Performance Cruiser is the only example on the market in immaculate condition. Built in pedigree aluminium with a full carbon mast and boom, she delivers fast, safe, and reliable offshore performance. Her raised deckhouse offers excellent visibility and protection, while below deck you'll find 4 spacious en-suite cabins and a bright, contemporary interior that showcases Van Dam Nordia's hallmark Dutch craftsmanship. Benefiting from a major 2025 refit with zero costs spared, she is EU VAT paid and ready to sail

Oliver Stehula

SPECIFICATIONS

Dimensions	21.35 x 5.80 x 2.85 (m)	Builder	Van Dam Nordia Shipyard
Built	2009	Cabins	4
Material	Aluminium	Berths	9
Engine(s)	1 x Perkins Sabre M225TI diesel	Hp/Kw	230.00 (hp), 169.28 (kw)
Asking price	€ 1.495.000 (VAT Paid)	Lying	at sales office

CONTACT

Sales office	De Valk Palma	Telephone	+34 971 40 29 11
Address	Port. Cala Nova, Avda. Joan Miro, 327 07015 Palma de Mallorca ES	E-mail	palma@devalk.nl

DISCLAIMER

These particulars are given in good faith as supplied but cannot be guaranteed.



NORDIA 70 PERFORMANCE CRUISER

GENERAL

Model	NORDIA 70 PERFORMANCE CRUISER
Type	sailing yacht
LOA (m)	21,35
LWL (m)	18,74
Beam (m)	5,80
Draft (m)	2,85
Year built	2009
Builder	Van Dam Nordia Shipyard
Country	The Netherlands
Designer	Robin Ten Hoope
Displacement (t)	56,46
Ballast (tonnes)	14
Gross tonnage	42
CE norm	A
Hull material	aluminium
Hull colour	Black
Superstructure material	GRP
Deck material	Teak NEW 2025
Deck finish	Teak NEW 2025
Cockpit deck finish	Teak
Antifouling (year)	Ultrasonic pro 258
Window material	Double glazed
Portholes	Stainless steel with full replacements
Fuel tank (litre)	2350
Freshwater tank (litre)	2270
Blackwater tank (litre)	+ Grey 760
Wheel steering	Jefa rod system with 2 x carbon steering wheels
Outside helm position	Dual helm
Emergency tiller	Yes
More info on hull	Antifouling 2025



NORDIA 70 PERFORMANCE CRUISER

More info on paintwork

Professional shipyard repaint 2022

Extra info

Keel laid in 2009 and first time buyer commissioned 2011

Extra info

Will be attending Palma International Boat Show 2025

ACCOMMODATION

Cabins

4

Berths

9

Interior

Maple wood

Layout

Deckhouse

Floor

Light oak

Saloon

Split level

Headroom saloon (m)

1.95m and 3.00m

Heating

Warmwater to fancoils / Two electric boilers (3+6kw)

Air-conditioning

Clima Veco 2 x compressors (a total of 63,000 BTU's)

Galley

Yes

Countertop

Dark marble

Cooker

Siemens

Extractor

Yes

Microwave/oven combi

Siemens

Fridge

Frigonautico 160 litre frontload

Freezer

100 litre topload electrical

Hot water system

115 litre Rheinstrom boiler

Dishwasher

AEG

Hot water tap

Quooker and Cube carbonated water system

Ice maker

Yes

Coffee maker

Rocket espresso machine

Owners cabin

Full beam suite aft

Bed length (m)

Queen sized

Wardrobe

Hanging shelves and drawers

Bathroom

Private en-suite with private shower



NORDIA 70 PERFORMANCE CRUISER

Extra info	TV system built into mirror Officer corner desk and L shaped sofa
Guest cabin 1	VIP stateroom
Bed length (m)	Double bed
Bathroom	En-suite with private shower
Guest cabin 2	Guest forward portside
Bed length (m)	Double bed with extra pullmans
Bathroom	En-suite
Guest cabin 3	Guest / crew starboard forward
Bed length (m)	Twin bunks
Bathroom	En-suite
Extra info	Each cabin has bespoke memory foam mattress' NEW
Washing machine	AEG
Washing machine/dryer combi	Siemens
Extra info	All flooring has custom fitted protective matting

MACHINERY

No of engines	1
Make	Perkins Sabre
Type	M225TI
HP	230
kW	169.28
Fuel	diesel
Year installed	2009
Maximum speed (kn)	12
Cruising speed (kn)	8
Consumption (l/hr)	40
Range (nm)	1100
Engine hours	5914
Drive	shaft
Bowthruster	Lewmar 300 TTH, 30HP hydraulic tunnel



NORDIA 70 PERFORMANCE CRUISER

Gearbox	Twin disc
Propeller type	Armatech shaft drive
Propeller blades	4
Manual bilge pump	Outside
Electric bilge pump	1 x central, 1 x forepeak, 1 x engine room, 1 x lazarette
Generator	Onan Cummins 17.5kw (New 2013)
Running hours generator	6288
Generator battery	DC/DC OM Tr Smart
Battery charger	2 x Mastervolt Mass 24/100-C
Inverter	Mastervolt Sine Wave 24/2500
Shorepower	220V
Insulation transformer	3 x Mastervolt Mass GI 3.5
Watermaker	Tecnicomar 2270 litre/day

NAVIGATION

Compass	yes
Electric compass	2 x Ritchie
Multi control display	Zeus 3
Fish finder	Yes
VHF	B&G H1000
Autopilot	H5000 Pilot controller
Radar	Furuno NX-700 A/B
GPS	Furuno GP-39
Plotter	Zeus 3 12'
Weather receiver	2 x in cockpit, 2 x at helm, 1 x owners cabin
Navtex	NX-700
Electronic chart(s)	Zeus 3 MFD
AIS receiver	Yes
AIS transponder	Yes
EPIRB	GME 406 satellite



NORDIA 70 PERFORMANCE CRUISER

EQUIPMENT

Fixed windscreen	Yes
Storm blinds	Yes
Sprayhood with grab rail	Yes (New 2024)
Bimini	yes
Cockpit cushions	NEW 2024
Cockpit table	Polished wood with covers
Bathing platform	Hydraulic retractable
Boarding ladder	Built into bathing platform
Gangway	Manual carbon
Deck shower	Yes
Anchor	Stainless steel fortress 125 kedge 75lbs
Anchor chain	75m
Windlass	Lewmar V5 hydraulic
Dinghy	Williams sport jet 345 NEW 8hr
Grab rail (superstructure)	Stainless steel
Railing side opening gates	Yes with custom step ladder
Life raft	Duarry quick release
Life raft (pers)	10
Wiper	Yes
TV	Electric stowable TV in saloon
TV receiver	Linked with Starlink
Satellite	Peplink 5G NEP-2
iPod connection	yes
Surround Sound System	JL audio media master 105 bluetooth with radio
Sub-woofer	Under saloon seating
Cockpit speakers	X 5 JL audio
Speakers in salon	X 2 JL audio
Fire extinguisher	CO2 firefighting system in engine room
Extra info	Starlink NEW October 2024



NORDIA 70 PERFORMANCE CRUISER

RIGGING

Rigging	Sloop
Standing rigging	Rod stainless steel
Brand mast	Hall Spars standard modules carbon stepped
Material mast	Carbon
Spreaders	3 x Carbon
Keel stepped mast	Yes
Mainsail	Quantem
Fully battened mainsail	129m2 Lasercut Hood
Furling boom	Fully battened Hall Spars carbon park avenue
Genoa	Hood 111m2
Genoa furler	Reckman hydraulic
Reefing System	Three steps reef system with 3rd reduced down to 41% of sail
Backstay adjuster	Hydraulic
Boomvang	Navtec hydraulic
Primary sheet winch	2 x Lewmar 77 AHST three speed
Secondary sheet winch	2 x Lewmar 68 AHST main sheet
Halyard winches	2 x Lewmar 2speed manual at mast step
Multifunctional winches	2 x Lewmar 65 AST manual runner winch
Winchcovers	All custom (NEW 2024)
Spi-pole	Carbon / Tender launch pole
Gennaker pole	Carbon / Tender launch pole
Extra info	PPO running backstays (Harken blocks)
Extra info	Harken track and car system and lazy jacks



NORDIA 70 PERFORMANCE CRUISER



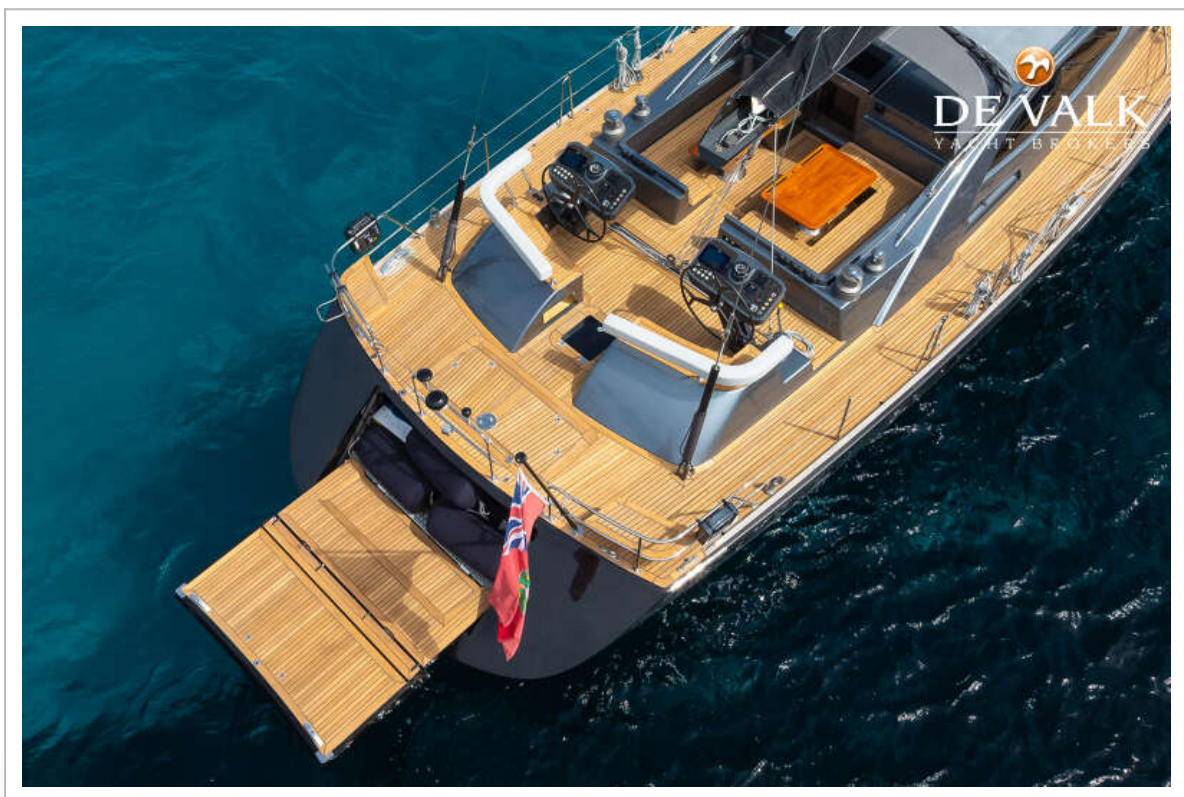
NORDIA 70 PERFORMANCE CRUISER



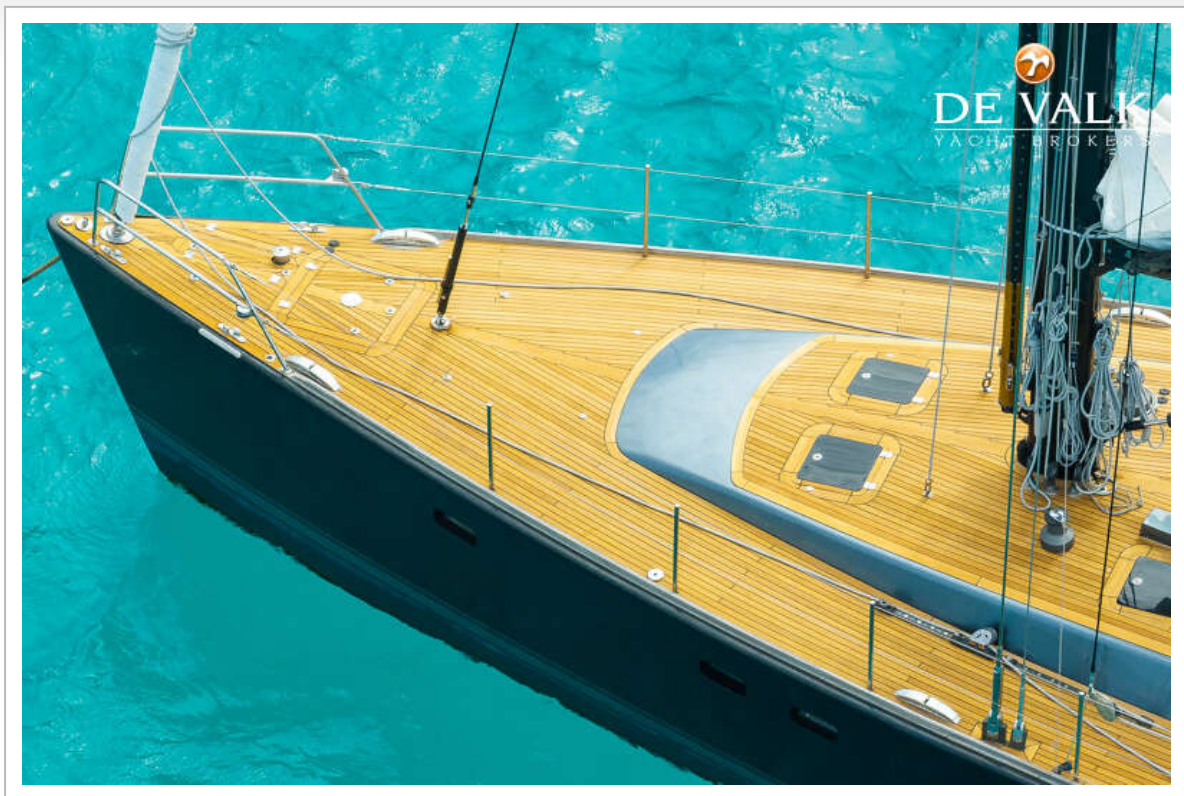
NORDIA 70 PERFORMANCE CRUISER



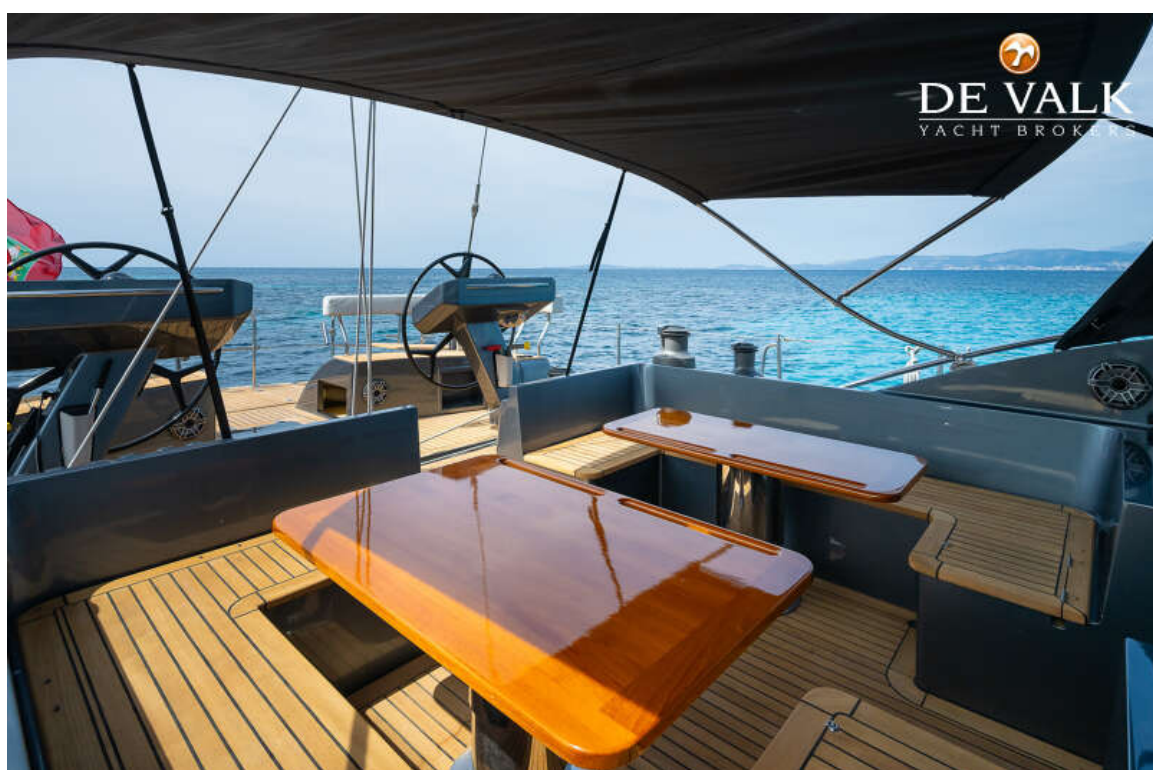
NORDIA 70 PERFORMANCE CRUISER



NORDIA 70 PERFORMANCE CRUISER



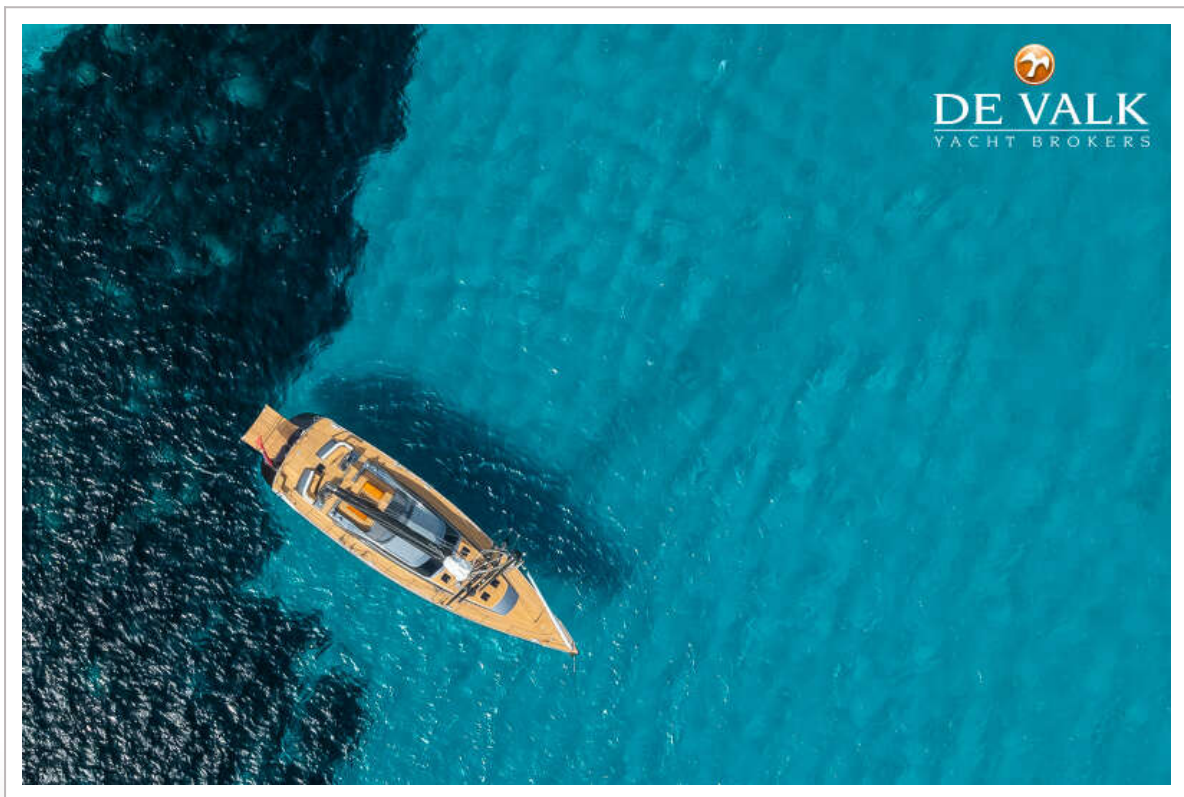
NORDIA 70 PERFORMANCE CRUISER



NORDIA 70 PERFORMANCE CRUISER



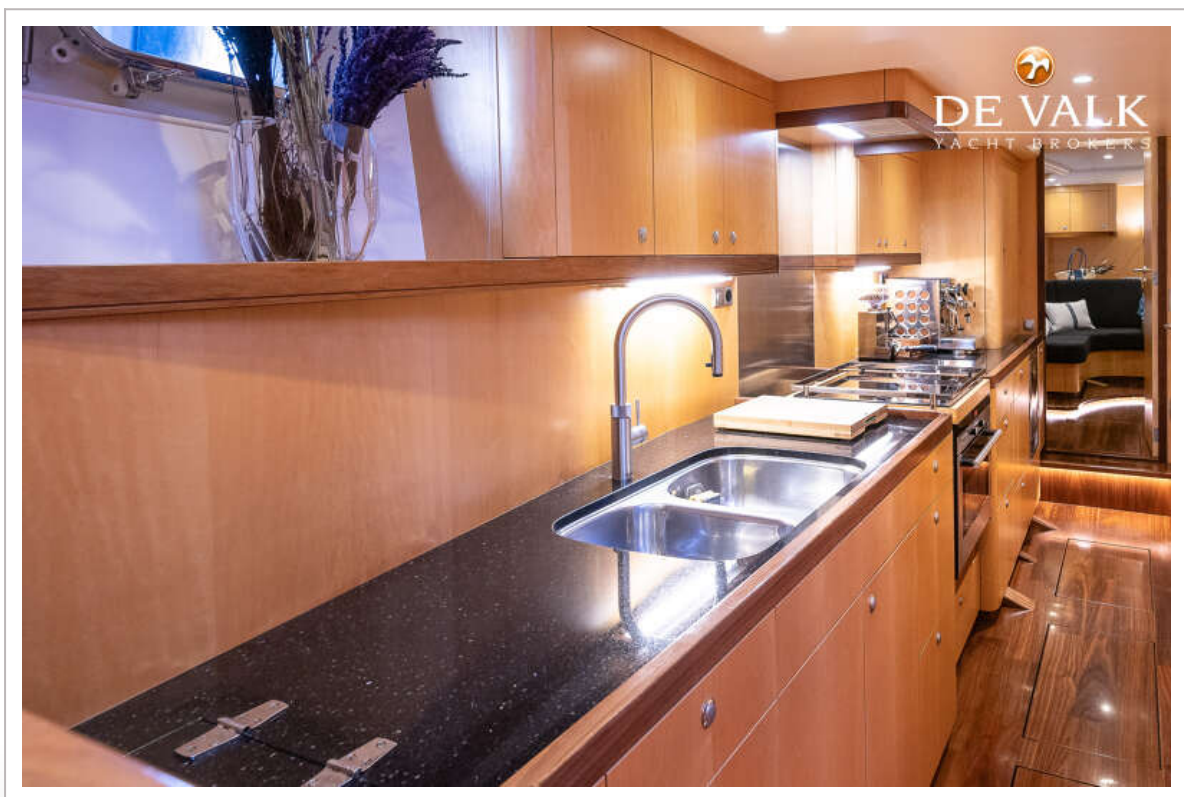
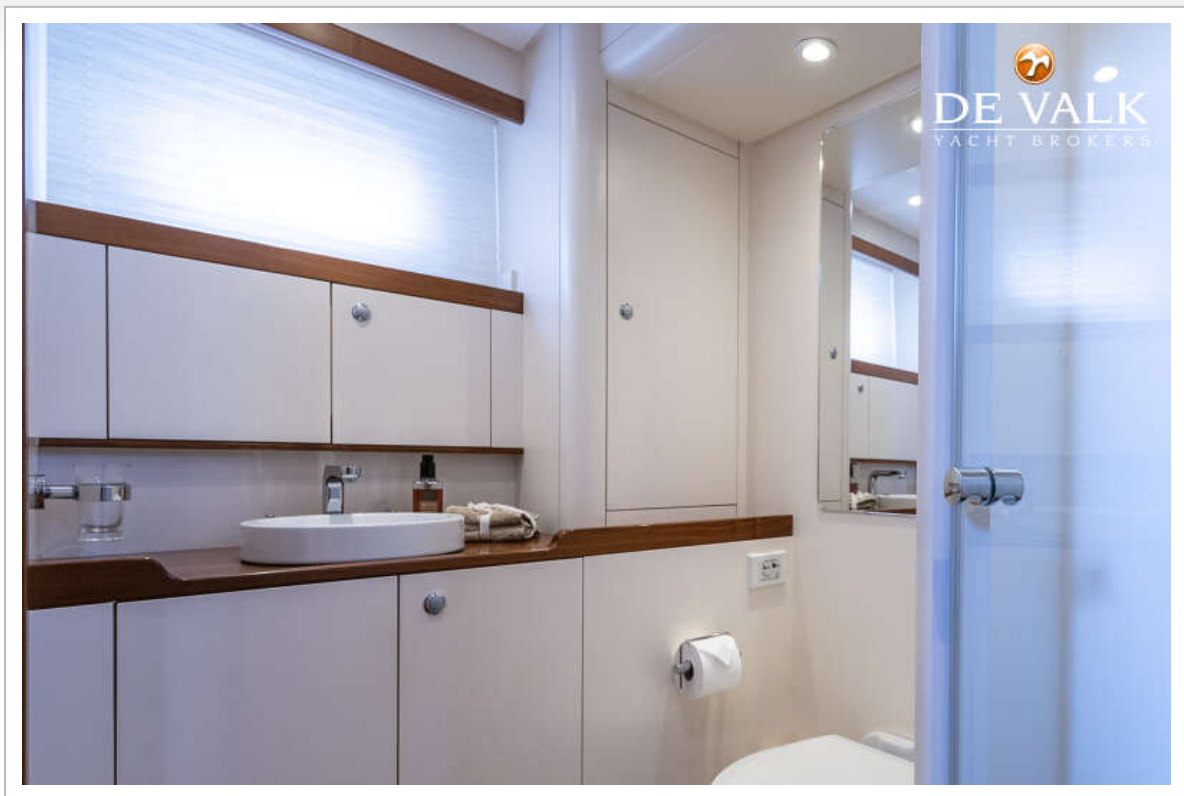
NORDIA 70 PERFORMANCE CRUISER



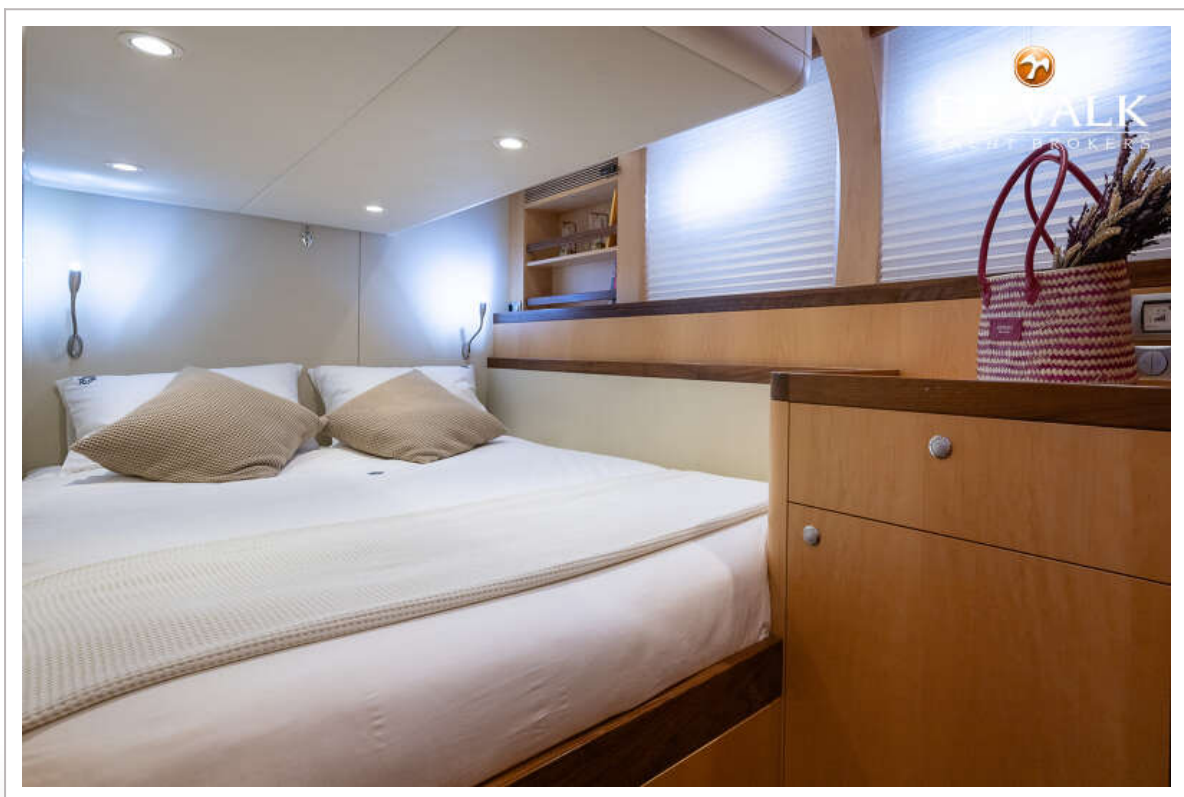
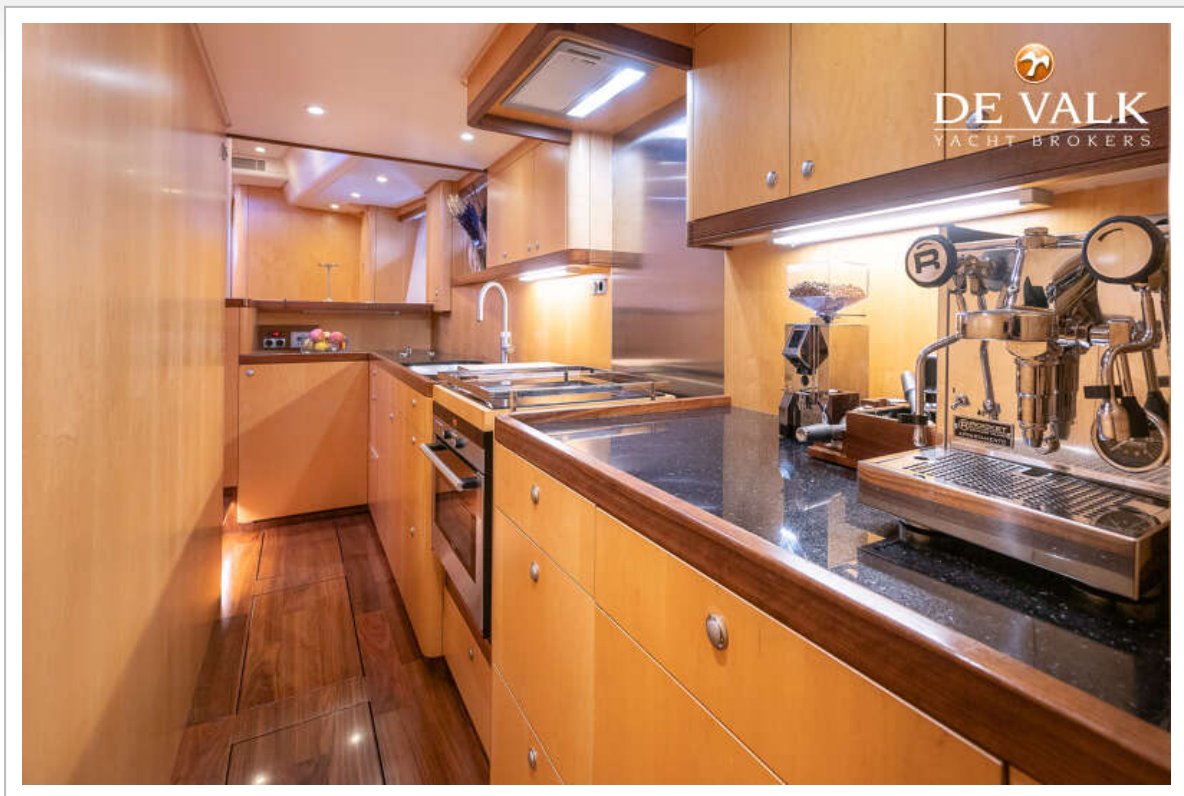
NORDIA 70 PERFORMANCE CRUISER



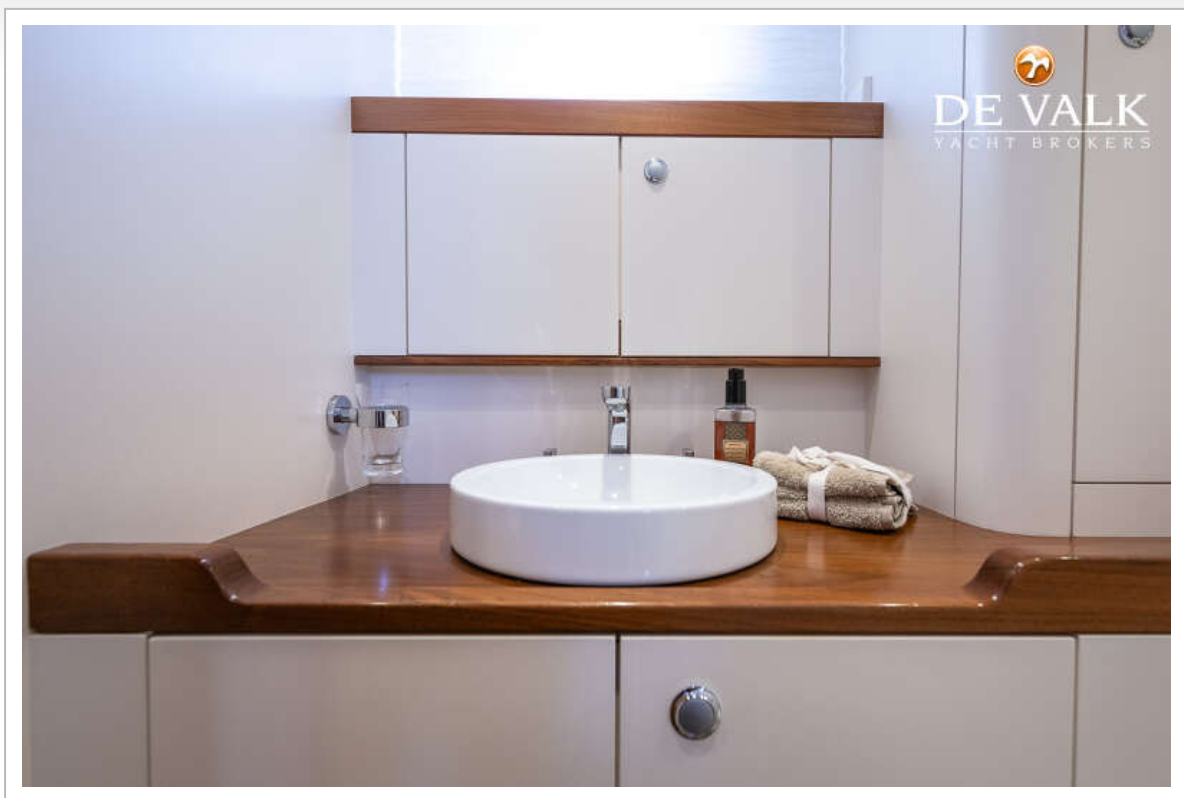
NORDIA 70 PERFORMANCE CRUISER



NORDIA 70 PERFORMANCE CRUISER



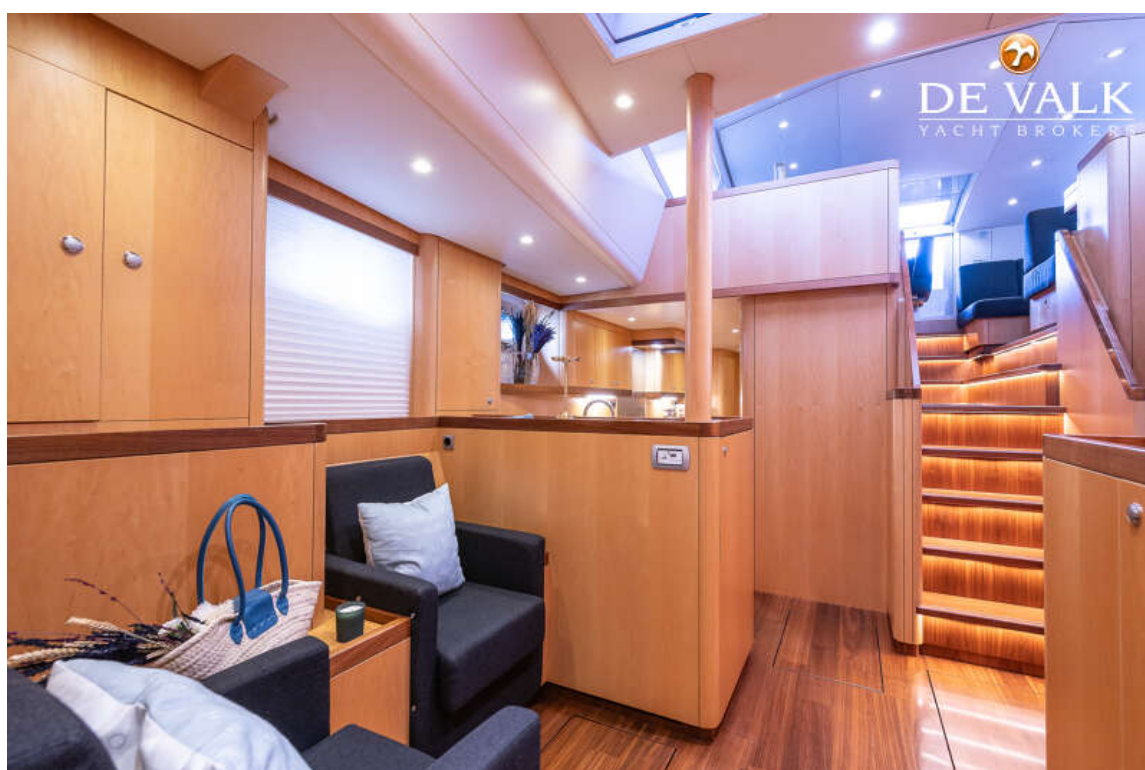
NORDIA 70 PERFORMANCE CRUISER



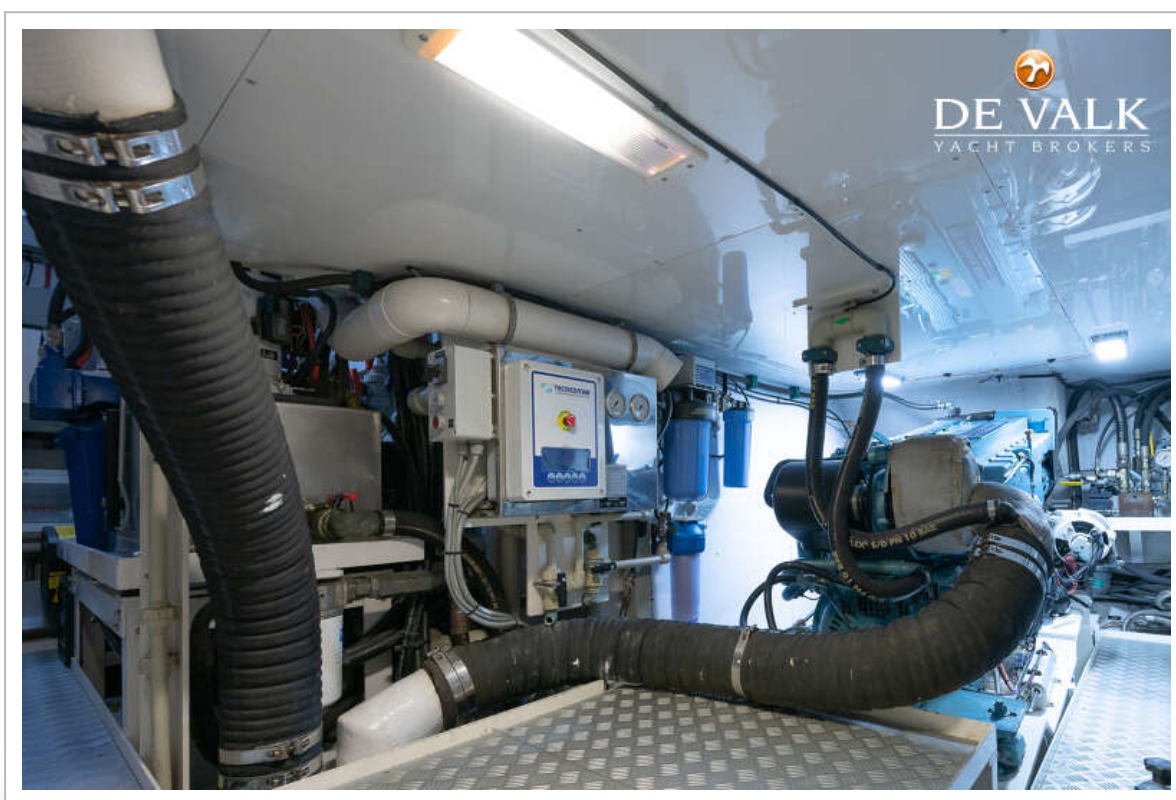
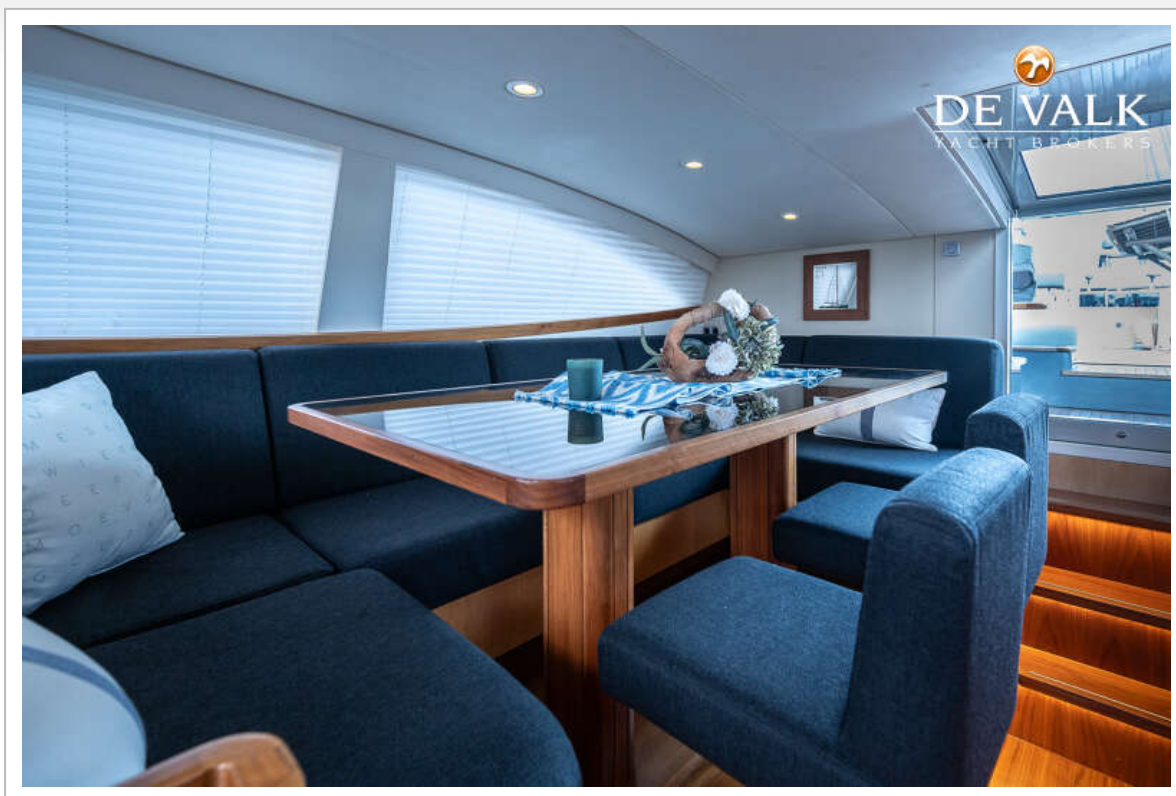
NORDIA 70 PERFORMANCE CRUISER



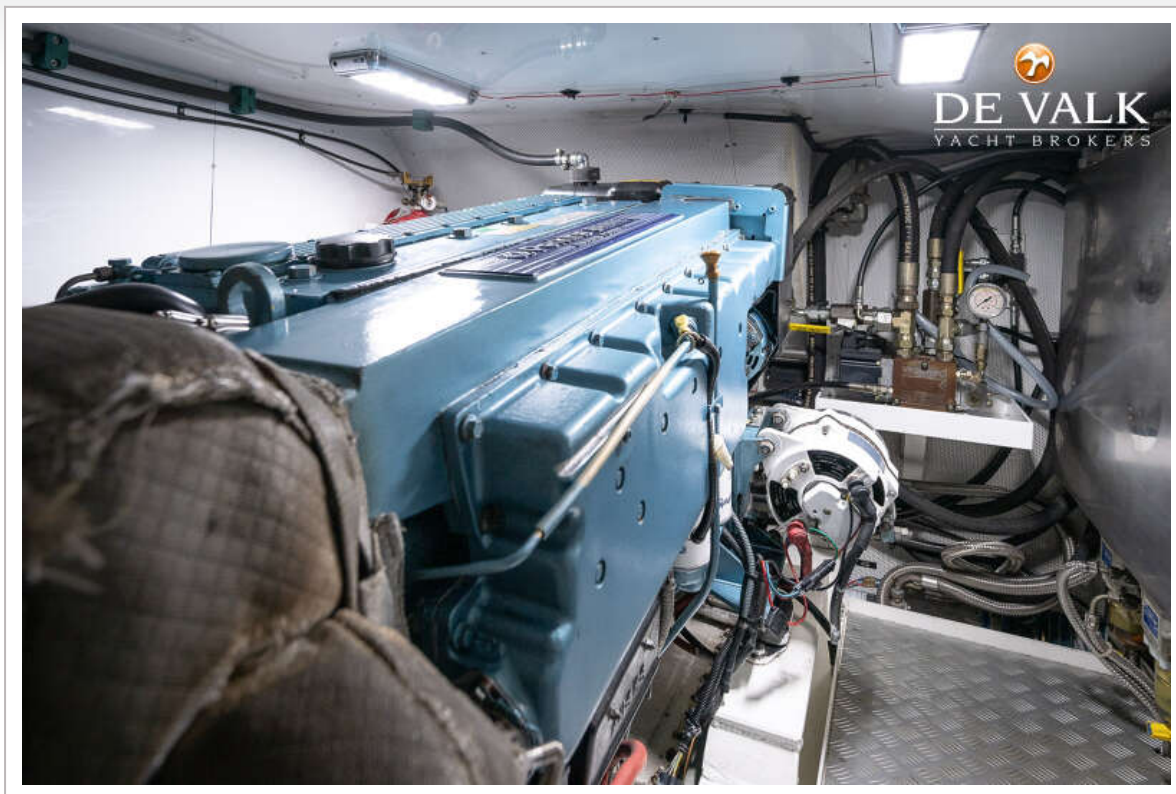
NORDIA 70 PERFORMANCE CRUISER



NORDIA 70 PERFORMANCE CRUISER



NORDIA 70 PERFORMANCE CRUISER



NORDIA 70 PERFORMANCE CRUISER

