



DE VALK
YACHT BROKERS



BOWMAN 40



DE VALK
YACHT BROKERS

BOWMAN 40

BROKER'S COMMENTS

Bowman 40 "Satire" Built in 1997. Currently owned by her third owner from new, who bought her in 2009. Beautiful oak interior with two cabins and two bathrooms. Volvo Penta diesel engine and Side Power bowthruster. Well maintained, from 2009 mostly stored inside during the winter period, ready to go, Viewing possible by appointment in The Netherlands

Arne Doodeman

SPECIFICATIONS

Dimensions	12.17 x 3.94 x 1.50 (m)	Builder	Bowman Yachts /Buchan
Built	1997	Cabins	2
Material	GRP	Berths	7
Engine(s)	1 x Volvo Penta MD22L-B diesel	Hp/Kw	50.00 (hp), 36.80 (kw)
Asking price	sold (VAT)	Lying	contact Monnickendam

CONTACT

Sales office	De Valk Monnickendam B.V.	Telephone	+31 (0)299 65 63 50
Address	Hoogedijk 6 1145 PM Katwoude NL	E-mail	monnickendam@devalk.nl

DISCLAIMER

These particulars are given in good faith as supplied but cannot be guaranteed.



GENERAL

Model	BOWMAN 40
Type	sailing yacht
LOA (m)	12,17
LWL (m)	9,75
Beam (m)	3,94
Draft (m)	1,50
Year built	1997
Builder	Bowman Yachts /Buchan
Country	United Kingdom
Designer	Chuck Paine
Displacement (t)	8,6
Ballast (tonnes)	3.225 kg
CE norm	NA
Hull material	GRP
Hull colour	blue Marine blue AWL-grip 2013
Hull shape	round-bilged
Keel type	Sheel keel (a method for reducing the depht of the keel)
Superstructure material	GRP
Rubbing strake	stainless steel
Deck material	GRP
Deck finish	teak Teak deck (side decks) by Dorr (2011)
Cockpit deck finish	teak Teak deck in cockpit original by Buchan
Antifouling (year)	2023
Window frame	aluminium
Window material	polycarbonate
Deckhatch	5 x Lewmar deckhatches (3 Hatches renewed in 2022)
Fuel tank (litre)	70 gallons (Approx. 320 litre)
Level indicator (fuel tank)	Tank tender
Freshwater tank (litre)	120 gallons (Approx. 540 litre)
Level indicator (freshwater)	Tank tender



Blackwater tank (litre)	Approx. 140 litre
Wheel steering	Edson steering wheel
Outside helm position	yes

ACCOMMODATION

Cabins	2
Berths	7
Interior	oak Oak with blue alcantara upholstery.
Layout	Owners cabin with V-berth and private bathroom in front. Saloon with C-shaped settee and I shaped settee. Two pipe cots and one seabed can be made in the saloon. Galley, navigationdesk, bathroom with storage, guest cabin with double berth.
Floor	wood
Open cockpit	yes
Saloon	yes
Heating	diesel ducted hot air Webasto 5D
Chart table	yes
Opening door to cockpit	yes
Galley	yes
Countertop	yes
Sink	stainless steel
Cooker	calor gas Taylor
Oven	Taylor
Fridge	Isotherm
Hot water system	220V + engine
Water pressure system	electrical
Owners cabin	v-bed
Wardrobe	hanging/drawers/shelves
Bathroom	en suite
Toilet	Jabsco
Toilet system	manual



Wash basin	yes
Shower	yes
Guest cabin 1	double bed
Wardrobe	hanging/drawers/shelves
Bathroom	shared
Toilet	Jabsco
Toilet system	manual
Wash basin	yes

MACHINERY

No of engines	1
Make	Volvo Penta
Type	MD22L-B
HP	50
kW	36.80
Fuel	diesel
Engine cooling system	freshwater heat exchanger
Drive	shaft
Bowthruster	electric Max Power CT100 12V (2014)
Exhaust	watercooled
Thrust bearing	Aquadrive
Propeller type	folding
Propeller blades	Autostream self feathering 3 bladed prop (2014)
Propeller shaft material	stainless steel
Shaft lubrication	grease
Manual bilge pump	yes
Electric bilge pump	yes
Start battery	1x 50 ah Red top (2015)
Service battery	3x 140ah Exide gel batteries (05-2025)
Bowthruster battery	2x 50 ah Red top batteries (2019)
Battery charger	yes



Inverter	yes
Extra info	Gear belt replaced 2024 Double fuelfilter
Extra info	Two alternators 60 amp (2022) "Stripper" rope cutter

NAVIGATION

Compass	Ritchie liquid compass
Log	B&G Hydra 2000
Windset	B&G Hydra 2000
VHF	Standart Horizon GX1600
VHF handheld	Icom
Autopilot	B&G Hercules autopilot/NAC-2
Plotter/GPS	Raymarine C80 and B&G Zeuss3 plotter (2019)
Navtex	Furuno Navtex NX-300
AIS receiver	Citrix-AIS system (2013)
EPIRB	Need service

EQUIPMENT

Sprayhood	2012
Cockpit cover	2013
Bimini	2013
Cockpit table	yes
Boarding ladder	stainless steel
Anchor	CQR Plough 25 LBS CQR anchor
Anchor chain	54 meter galvanized chain
Anchor 2	Fortress anchor 25 Kg
Windlass	electrical Lewmar electric windlass with capstan
Sea railing	wire
Pushpit	yes
Pulpit	yes
Life raft	RFD Seasafe 6 pers. inspected 2025
Fenders	yes



Mooring lines	yes
Fire extinguisher	Needs services

RIGGING

Rigging	sloop
Standing rigging	wire Soudern spar rigging, inspected 2020, forestay replaced 2020
Brand mast	Kemp
Material mast	aluminium
Spreaders	2x
Mainsail	Hagoort (2022)
Mainsail cover	Lazy-jack sytem, Hagoort 2023
Jib	Van Vliet (2020)
Gennaker	Gennaker with chute
Staysail	serviced 2025 Schaefer staysail furling, staysail Van Vliet 2020
Yankee	Schaefer furling Yankee, Van Vliet 2020
Stormjib	Hood 2000 never used
Reefing System	quick-one-line-reefing
Boomvang	Kemp
Spi-pole	carbon Carbon spiboom in cover on mast
Extra info	1x 44 Lewmar winch, 2x 40 Lewmar winch, 2x 54 Lewmar winch, 1x 4o Lewmar winch, 1x 46 Lewmar winch



BOWMAN 40



BOWMAN 40



BOWMAN 40



BOWMAN 40



BOWMAN 40



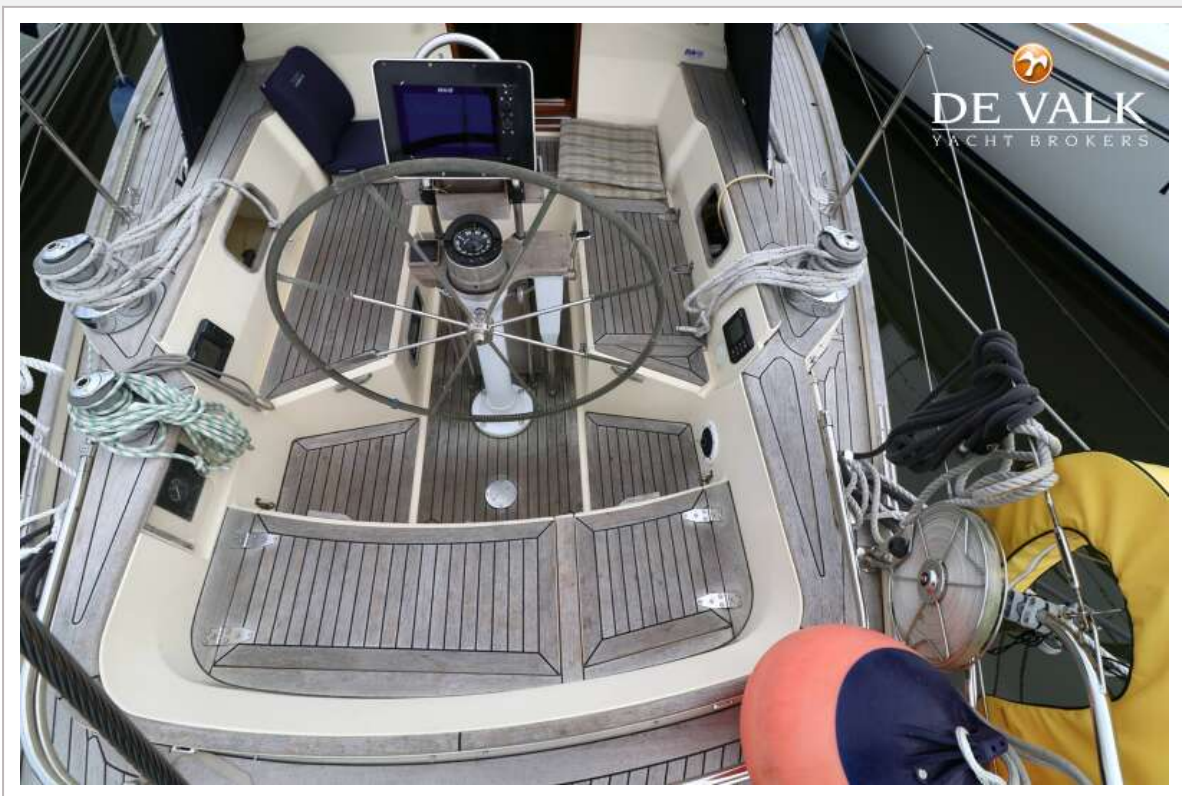
BOWMAN 40



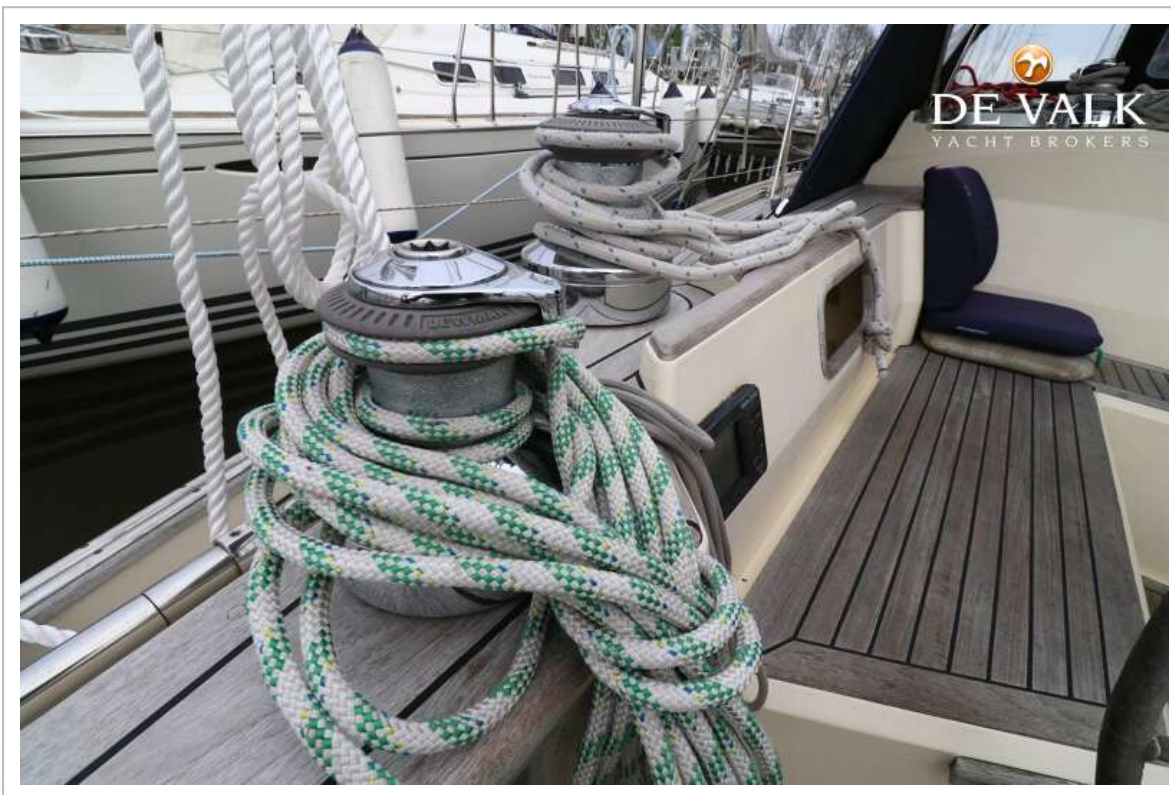
BOWMAN 40



BOWMAN 40



BOWMAN 40



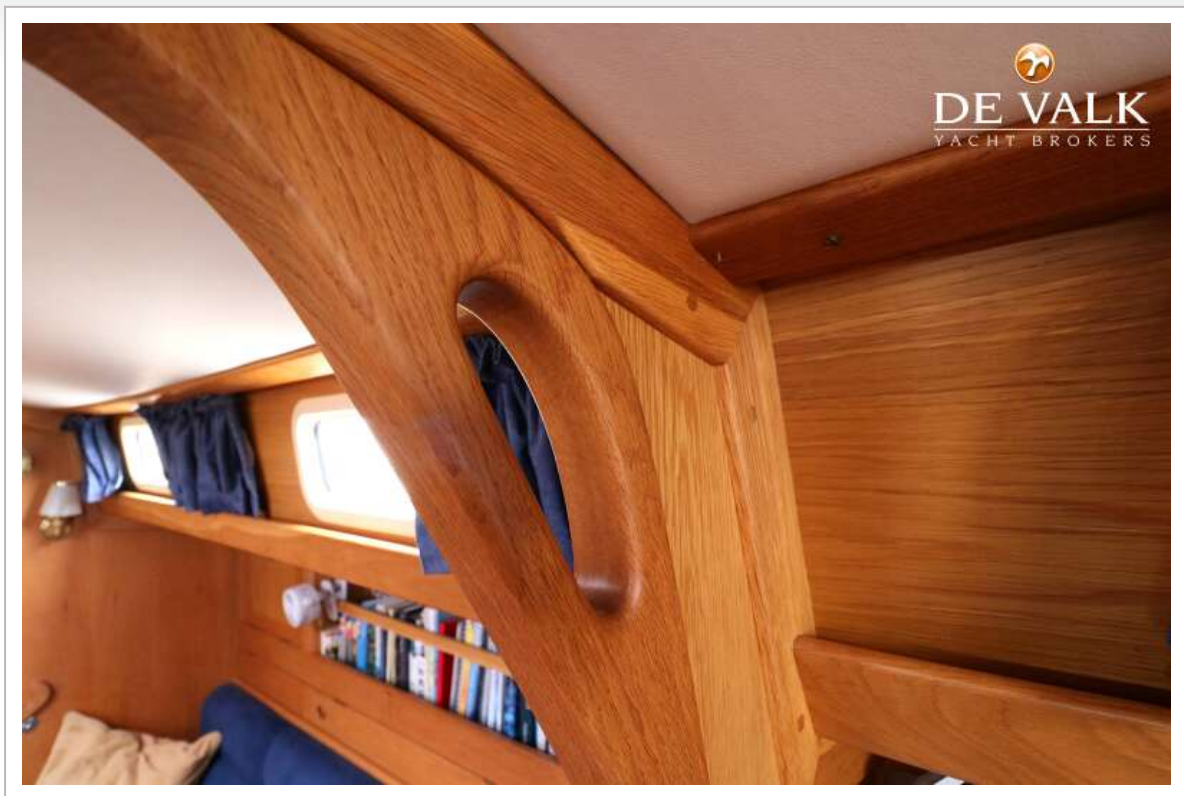
BOWMAN 40



BOWMAN 40



BOWMAN 40



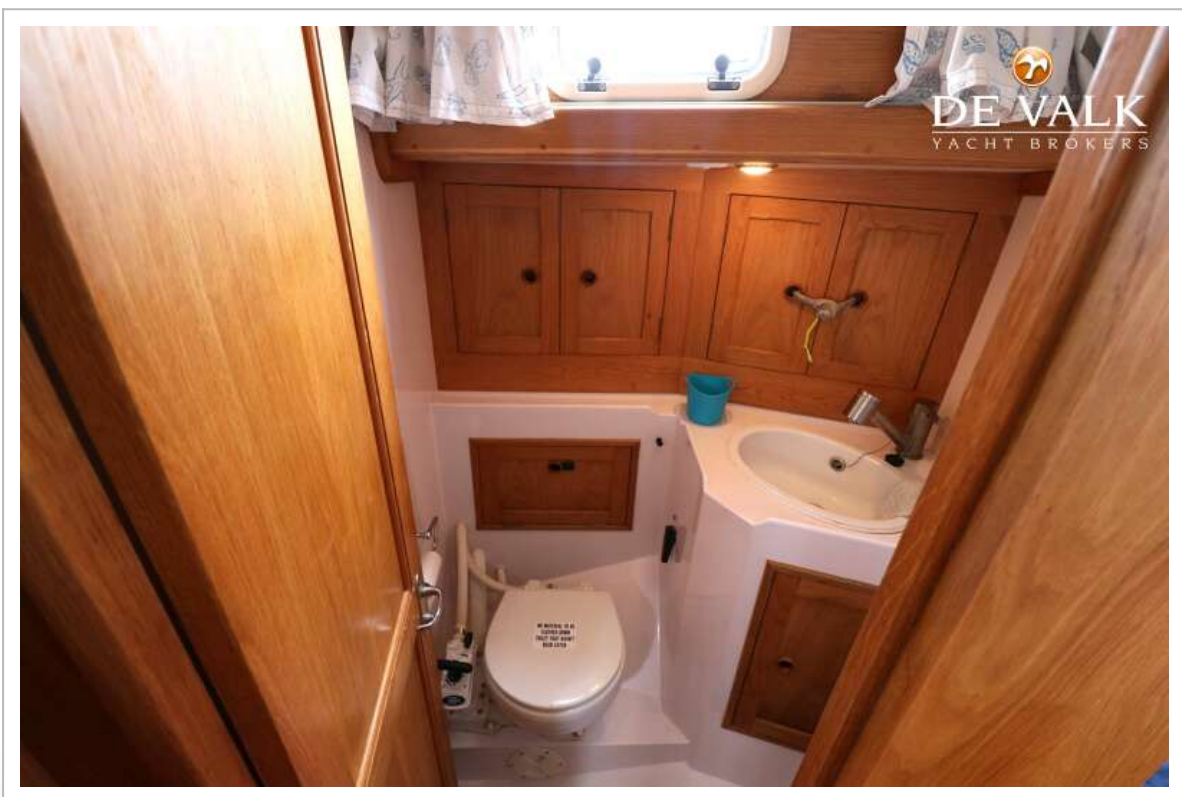
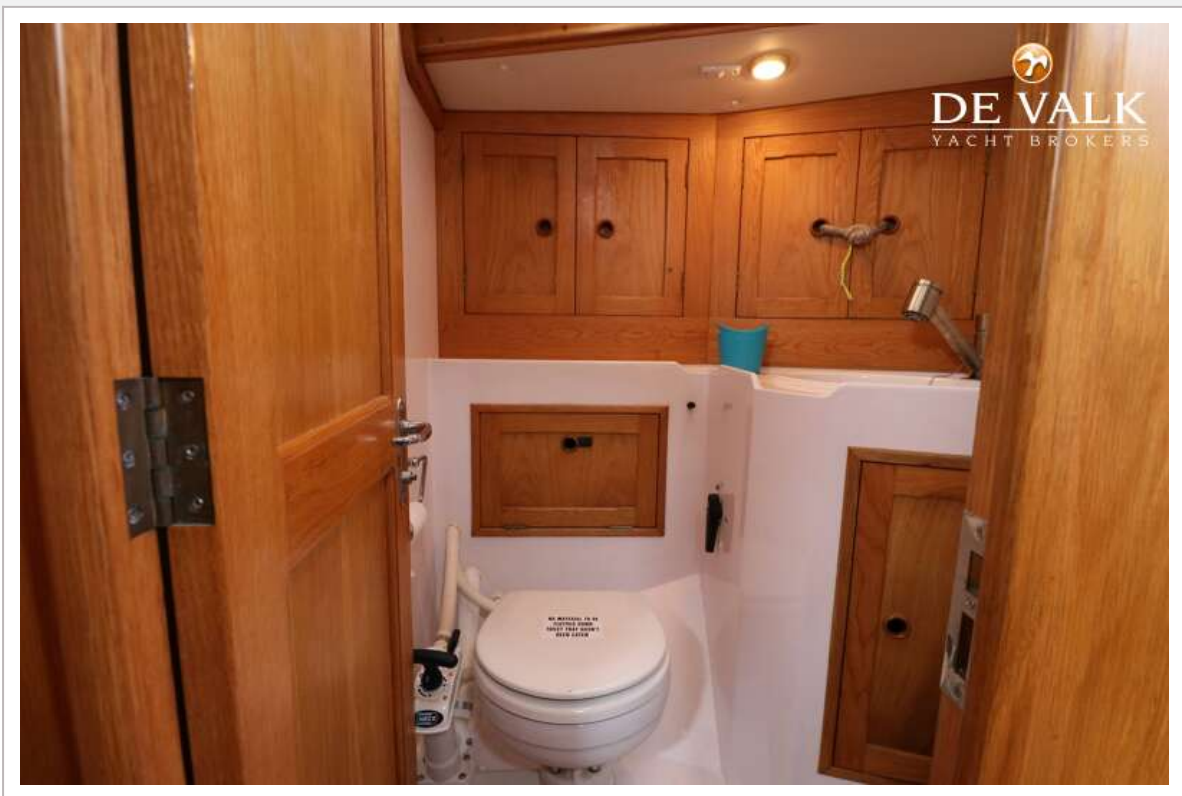
BOWMAN 40



BOWMAN 40



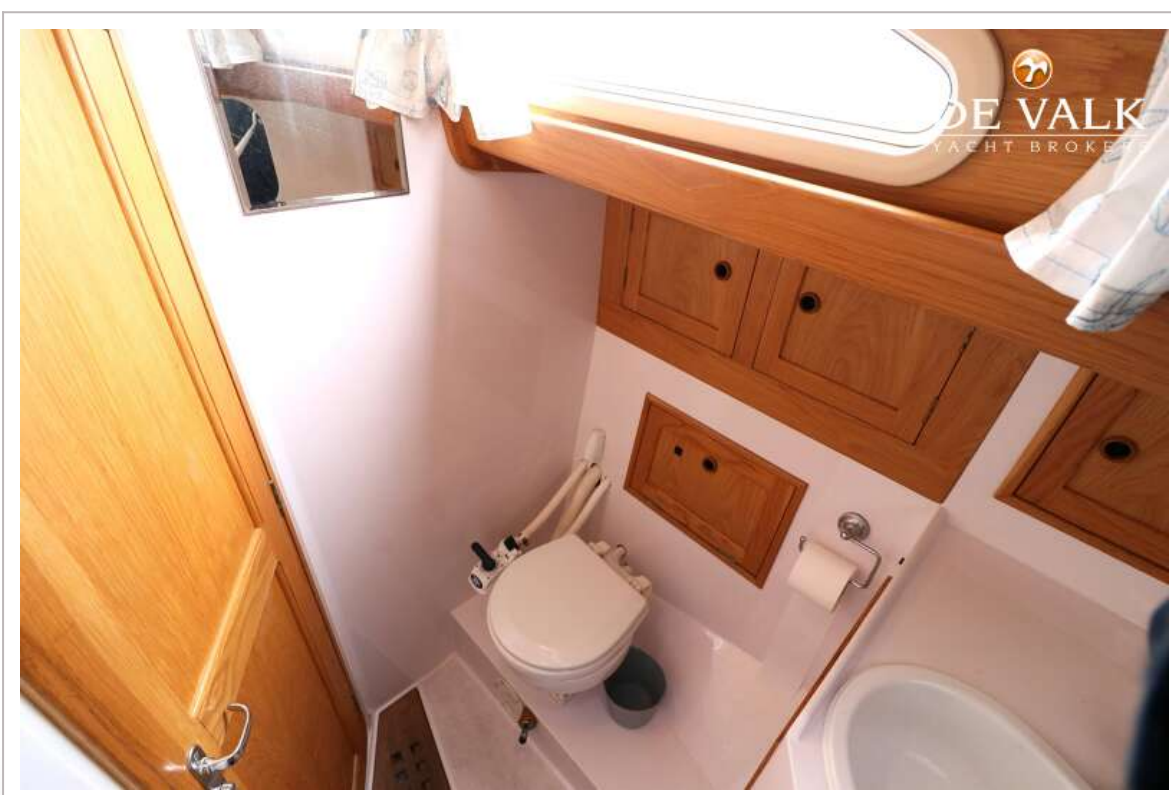
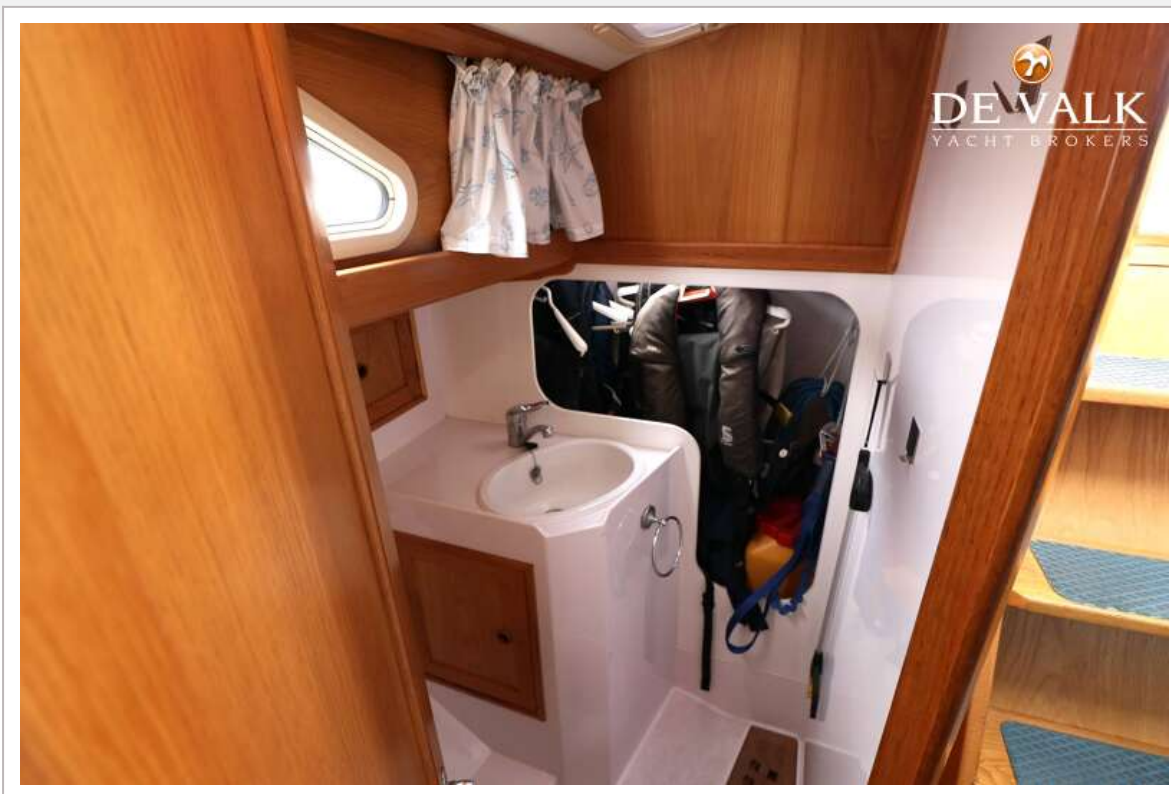
BOWMAN 40



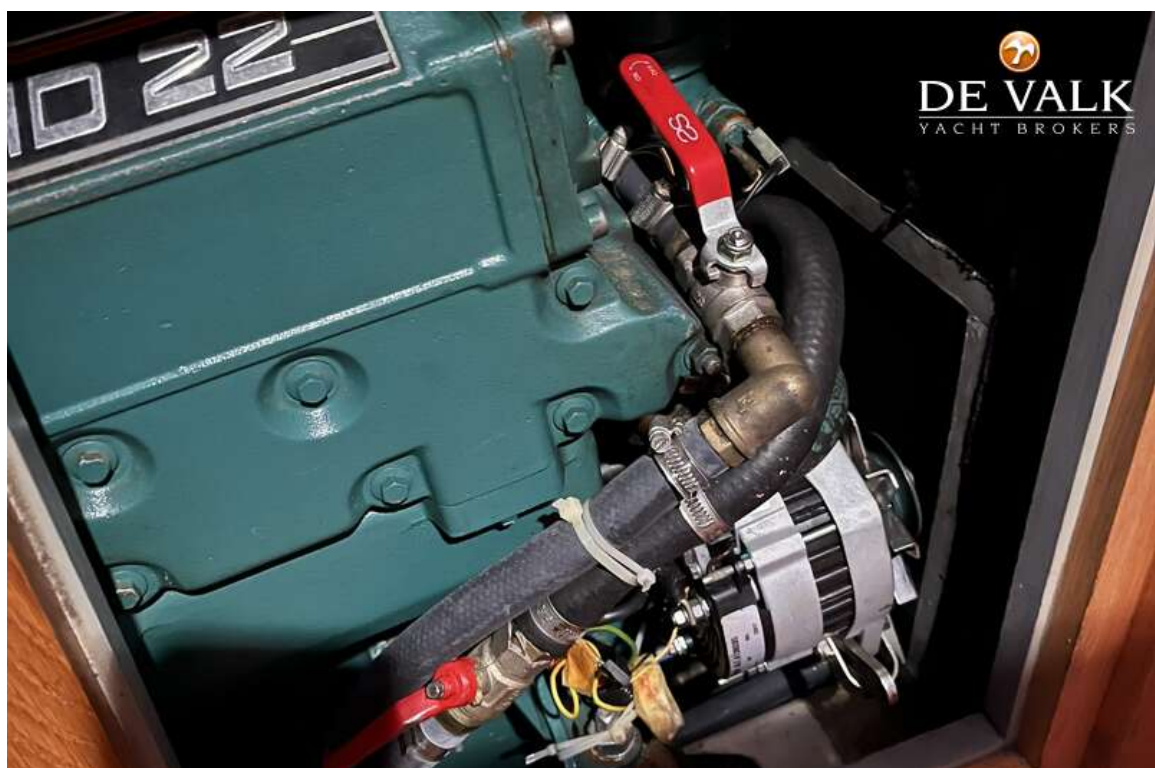
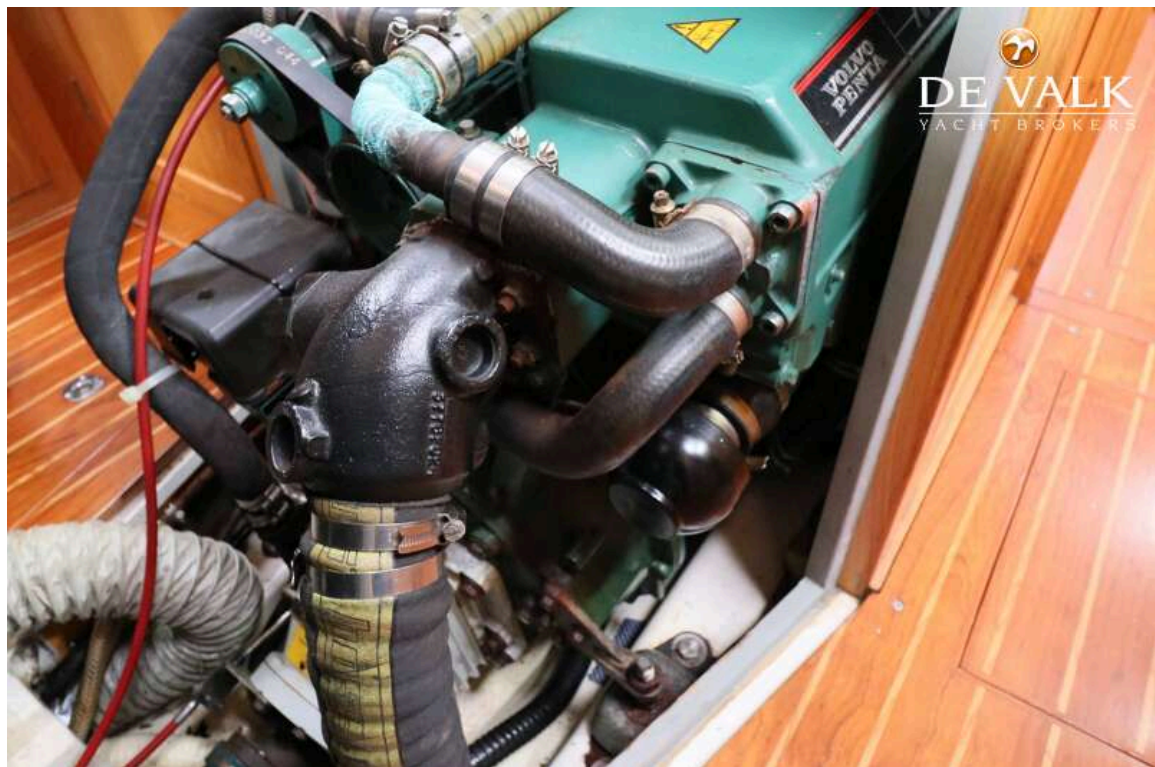
BOWMAN 40



BOWMAN 40



BOWMAN 40



BOWMAN 40

