



DE VALK
YACHT BROKERS



SEA FINN 41



DE VALK
YACHT BROKERS

BROKERAGE | CHARTER | BERTHS | FINANCE | INSURANCE | YACHT MANAGEMENT

BROKER'S COMMENTS

The Sea Finn 41 seamlessly combines comfort, safety, and craftsmanship in an elegant design. It has been proudly owned by the same family for many years (since 1991), a testament to its reliability and enduring quality. Perfectly suited for sailing at sea, while also offering exceptional comfort for relaxed cruising. An ideal choice for those seeking both style and comfort on the water.

Arjen Hoeksma

SPECIFICATIONS

Dimensions	13.26 x 3.50 x 1.60 (m)	Builder	Kaarina Yachts
Built	1984	Cabins	2
Material	GRP	Berths	6
Engine(s)	1 x Perkins 4236 diesel	Hp/Kw	77.00 (hp), 56.67 (kw)
Asking price	sold (VAT)	Lying	Croatia

CONTACT

Sales office	De Valk Dalmatia	Telephone	0031 653 299 244
Address	Ul. Velimira Skorpika 22000 Sibenik HR	E-mail	dalmatia@devalk.nl

DISCLAIMER

These particulars are given in good faith as supplied but cannot be guaranteed.



GENERAL

Model	SEA FINN 41
Type	sailing yacht
LOA (m)	13,26
LWL (m)	12,18
Beam (m)	3,50
Draft (m)	1,60
Year built	1984
Builder	Kaarina Yachts
Country	Finland
Displacement (t)	14
Hull material	GRP
Hull colour	white
Keel type	long keel
Rubbing strake	wood
Deck finish	teak
Cockpit deck finish	teak
Antifouling (year)	Every two years
Window frame	aluminium
Window material	glass
Fuel tank (litre)	2x 500 L
Level indicator (fuel tank)	yes
Freshwater tank (litre)	1x 500 L and 1x 80 L
Level indicator (freshwater)	yes
Wheel steering	hydraulic 2x wood

ACCOMMODATION

Cabins	2
Berths	6
Aft deck	yes
Pilot house/deck saloon	yes



Heating	central hot water
Air-conditioning	yes
Aft Cabin	yes
Dinette	yes
Dinette to convert into berth	yes
Countertop	corian
Sink	stainless steel
Cooker	calor gas
Gas alarm	yes
Fridge	With freezer compartment
Hot water system	220V + engine Boiler 40 liter 1200W (2023)
Water pressure system	electrical
Owners cabin	double bed
Bed length (m)	2,50
Wardrobe	hanging/drawers/shelves
Bathroom	yes
Toilet	shared
Toilet system	electric
Wash basin	in the bathroom
Shower	Outside
Guest cabin 1	double bed
Bed length (m)	2,20
Wardrobe	hanging and shelves
Washing machine	yes

MACHINERY

No of engines	1
Make	Perkins
Type	4236
HP	77
kW	56.67



Fuel	diesel
Engine hours	5916
Engine cooling system	freshwater heat exchanger
Engine controls	bowden cable
Gearbox	mechanical
Bowthruster	electric
Exhaust	watercooled
Propeller type	fixed
Propeller blades	3
Propeller shaft material	stainless steel Renewed 2020
Shaft lubrication	water
Manual bilge pump	yes
Electric bilge pump	yes
Generator	wet exhaust
Start battery	1
Service battery	5x 140 Ah (2019)
Battery charger	Toyo CS 40A
Inverter	yes
Shorepower	with cable
Extra info	Engine service every 2 years

NAVIGATION

Compass	yes
Compass on flybridge	yes
Electric compass	yes
Depth sounder	yes
Log	yes
Windset	yes
Autopilot	yes
Searchlight	yes



EQUIPMENT

Cockpit cover	yes
Bimini	2018
Winter cover	yes
Cockpit table	yes
Cockpit chairs	yes
Bathing platform	yes
Boarding ladder	wood
Gangway	yes
Deck shower	yes
Anchor	With electrical winch
Anchor chain	100 meter stainless steel
Dinghy	No
Davits	stainless steel
Davits controls	electrical
Sea railing	Stainless steel with wood
Grab rail (superstructure)	wood
Railing side opening gates	2x wood
Lifebuoy	yes
Wiper	yes
Horn	electric
Fenders	yes
Mooring lines	yes
Spare parts	yes
Clock - barometer	yes

RIGGING

Rigging	ketch
Brand mast	Seldén
Material mast	aluminium
Mast lowering system	yes



Mainsail	yes
Mizzen	yes
Genoa	yes
Booster	yes
Reefing System	main in-boom furling
Backstay adjuster	mechanical
Primary sheet winch	yes



SEA FINN 41



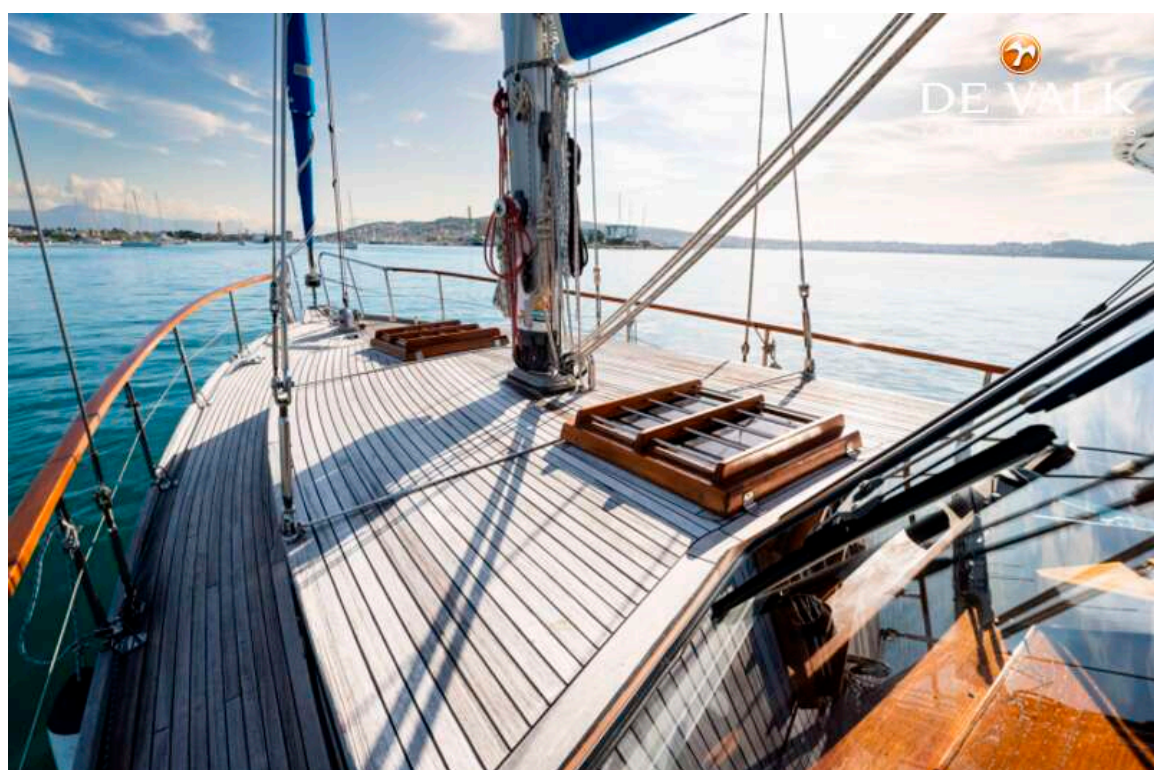
SEA FINN 41



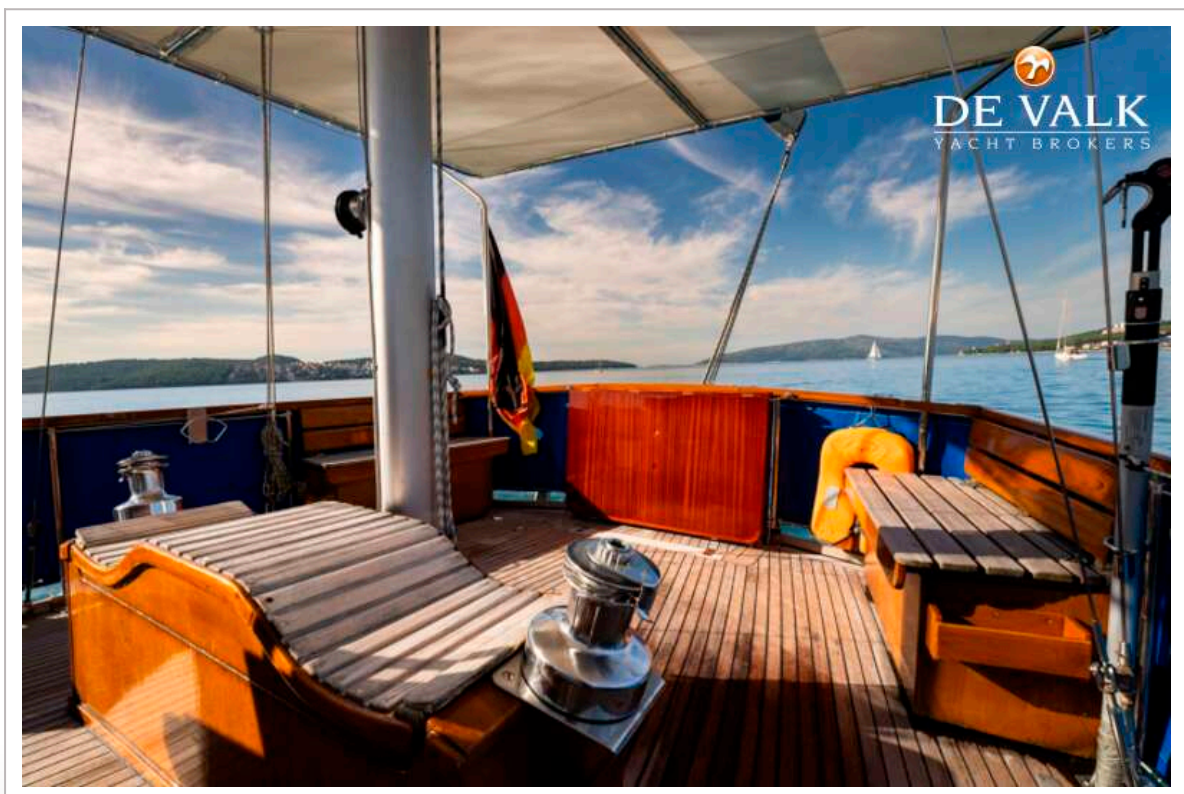
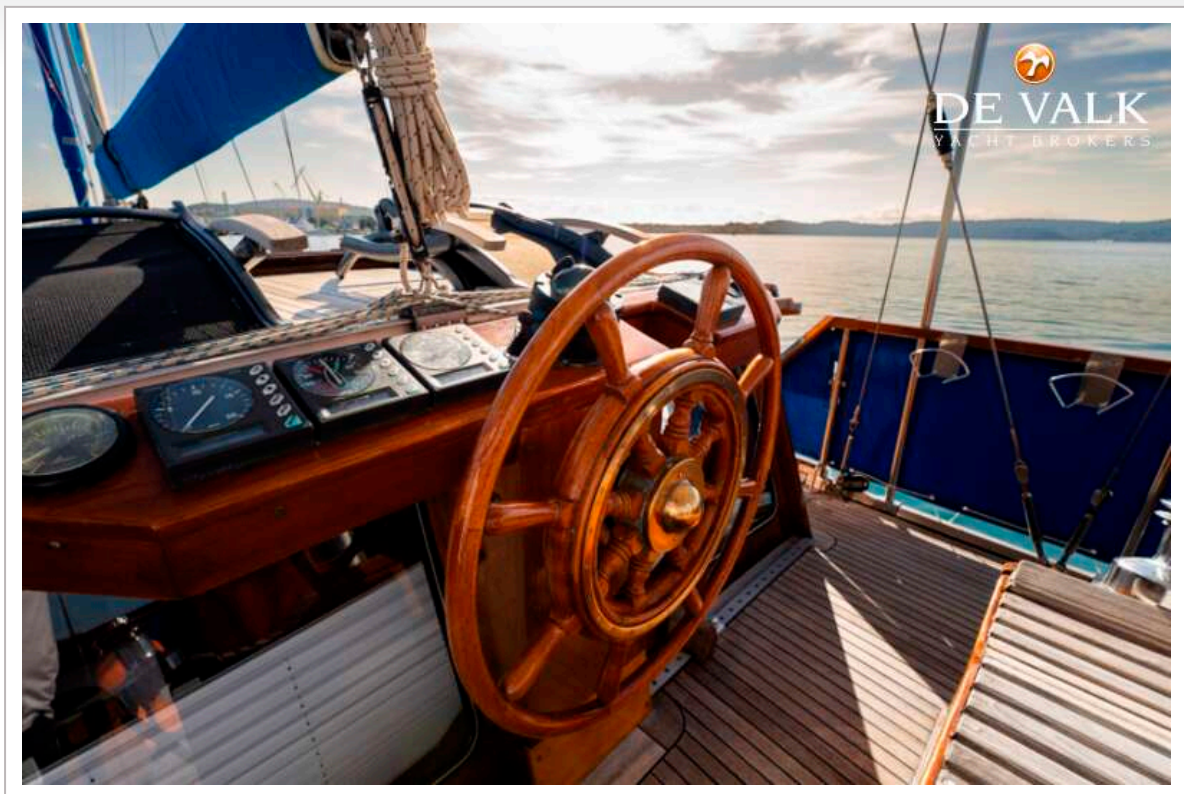


SEA FINN 41

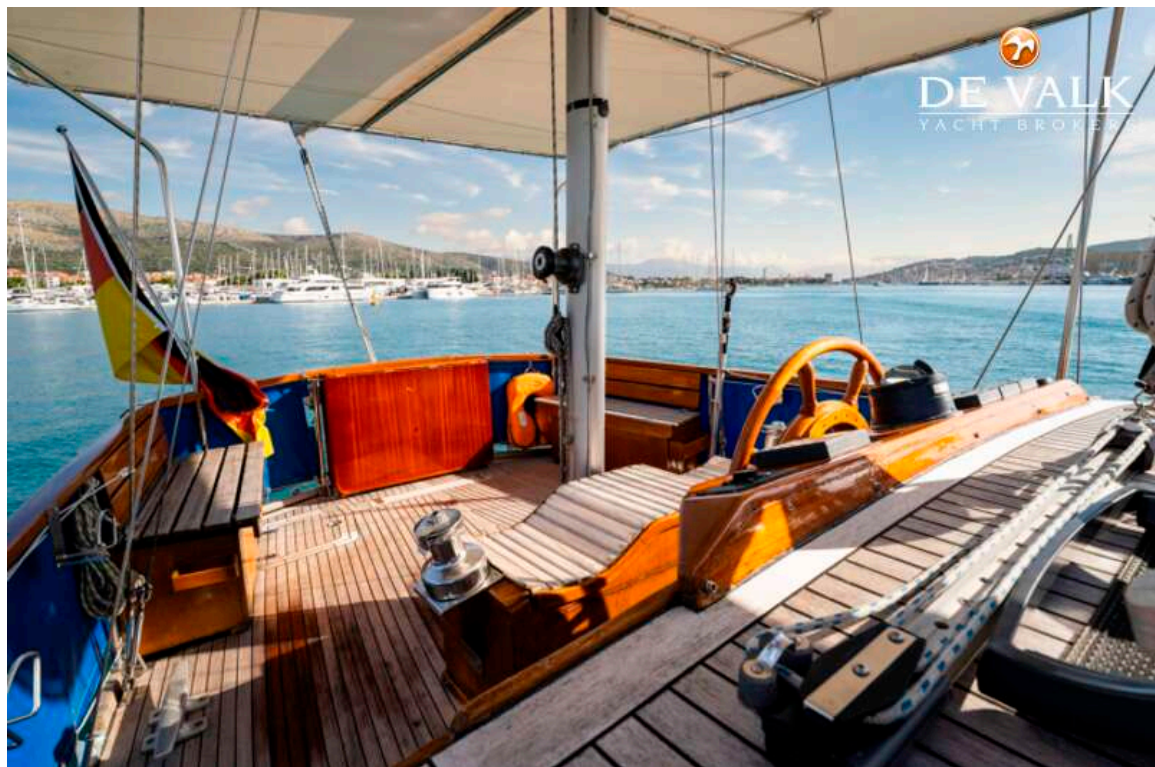


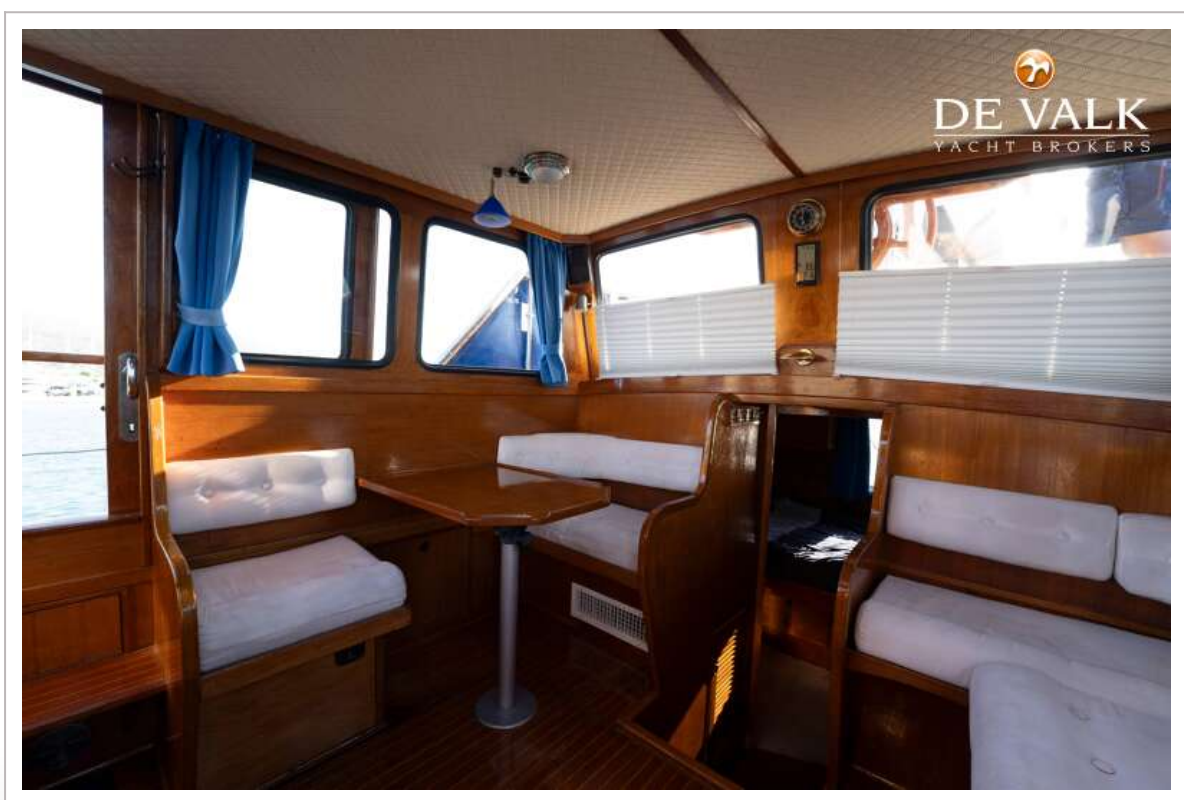
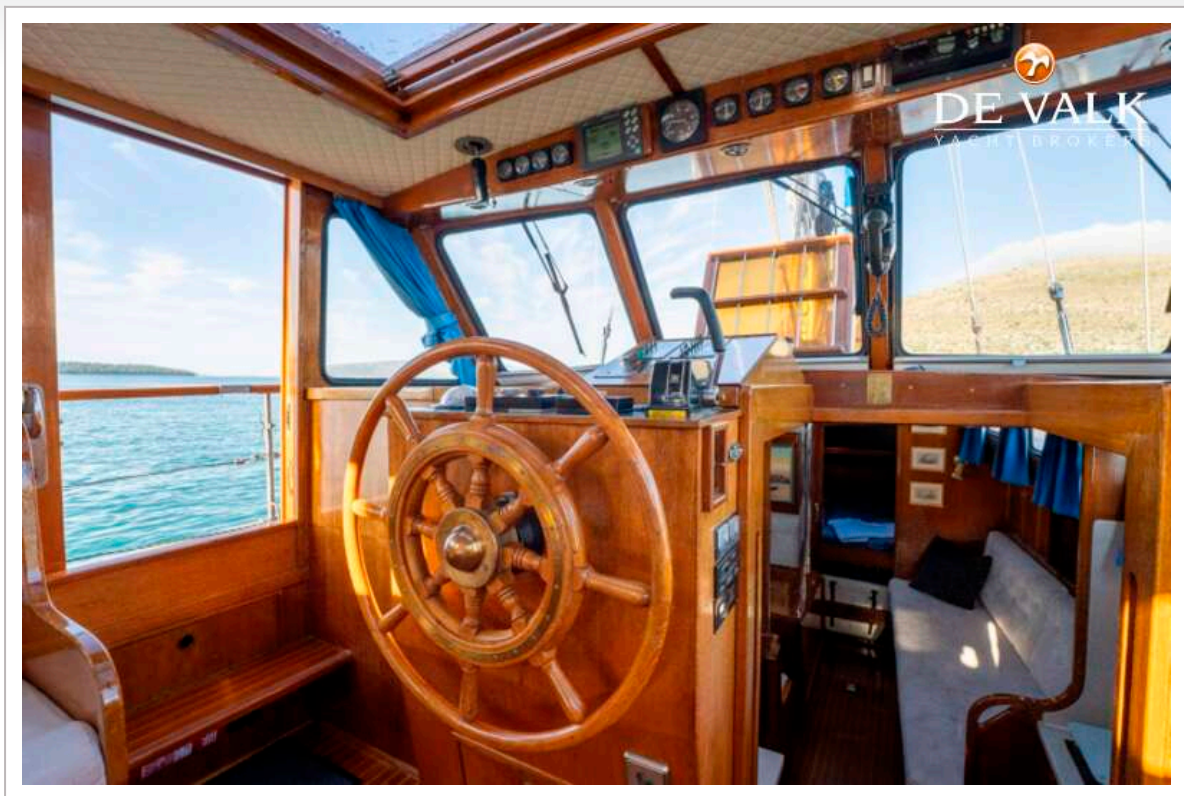




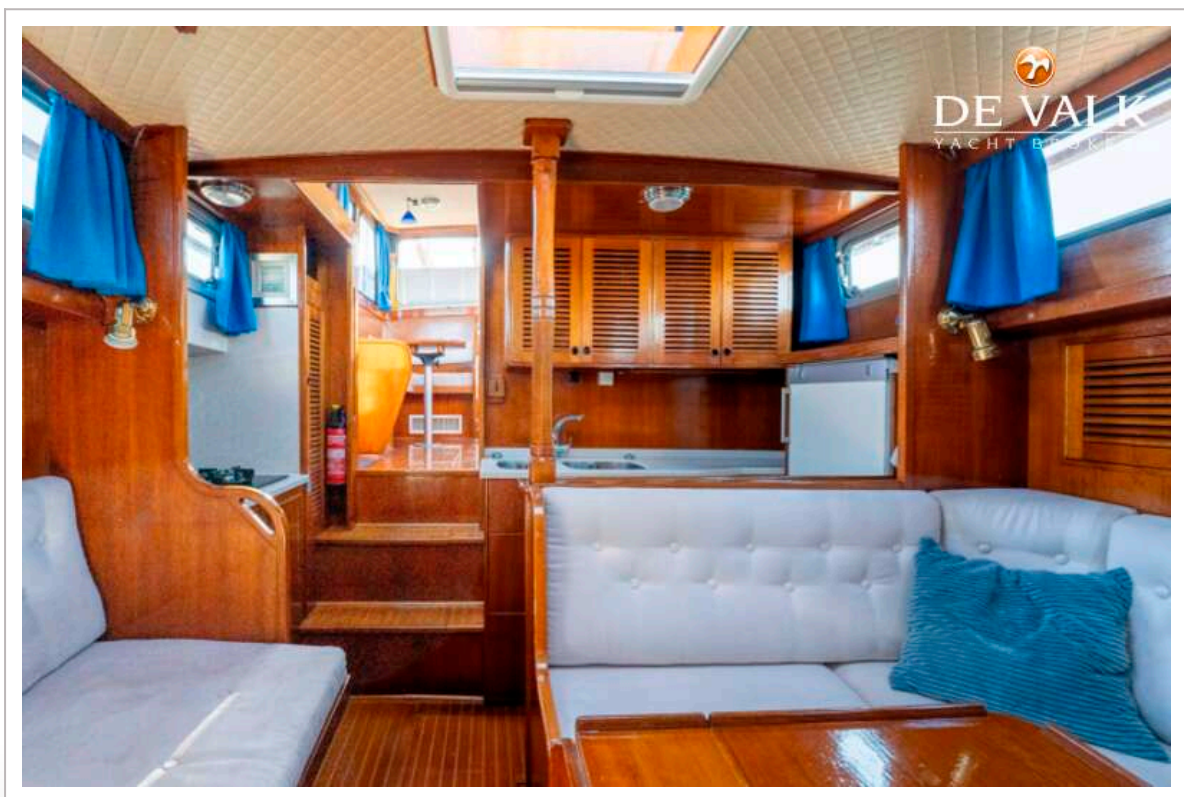
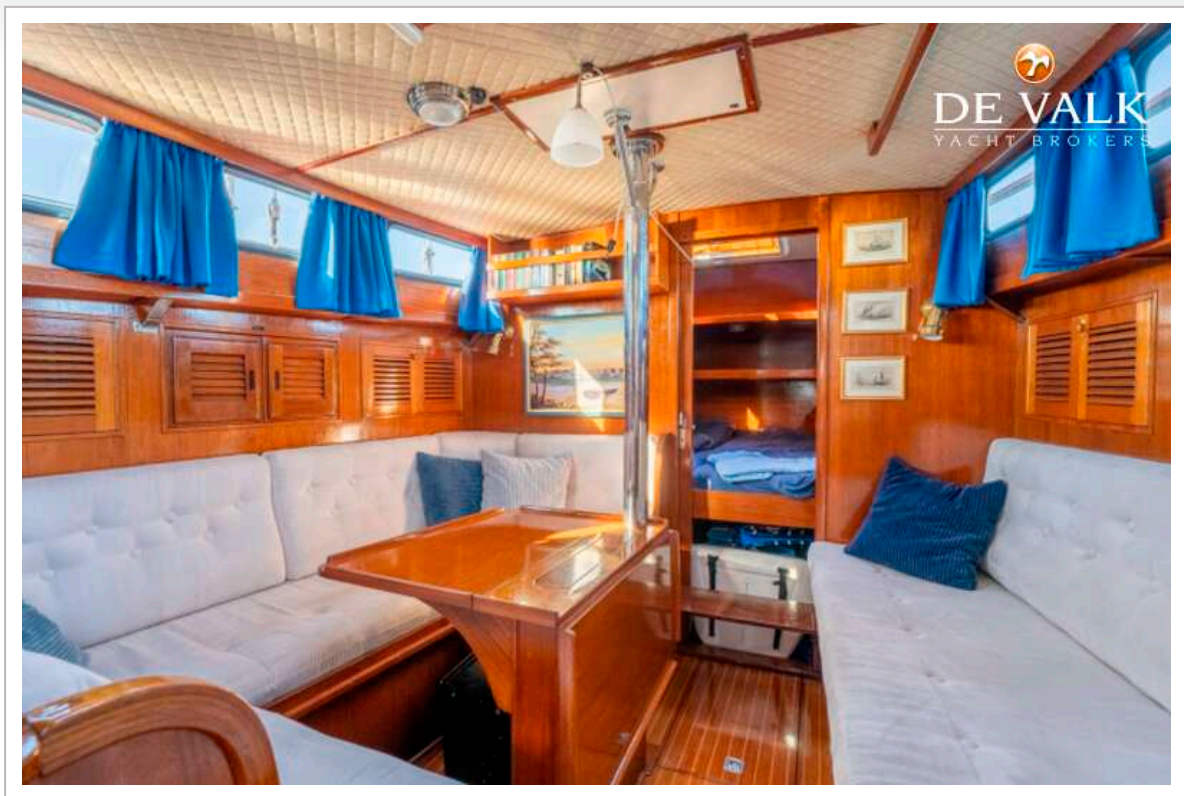


SEA FINN 41

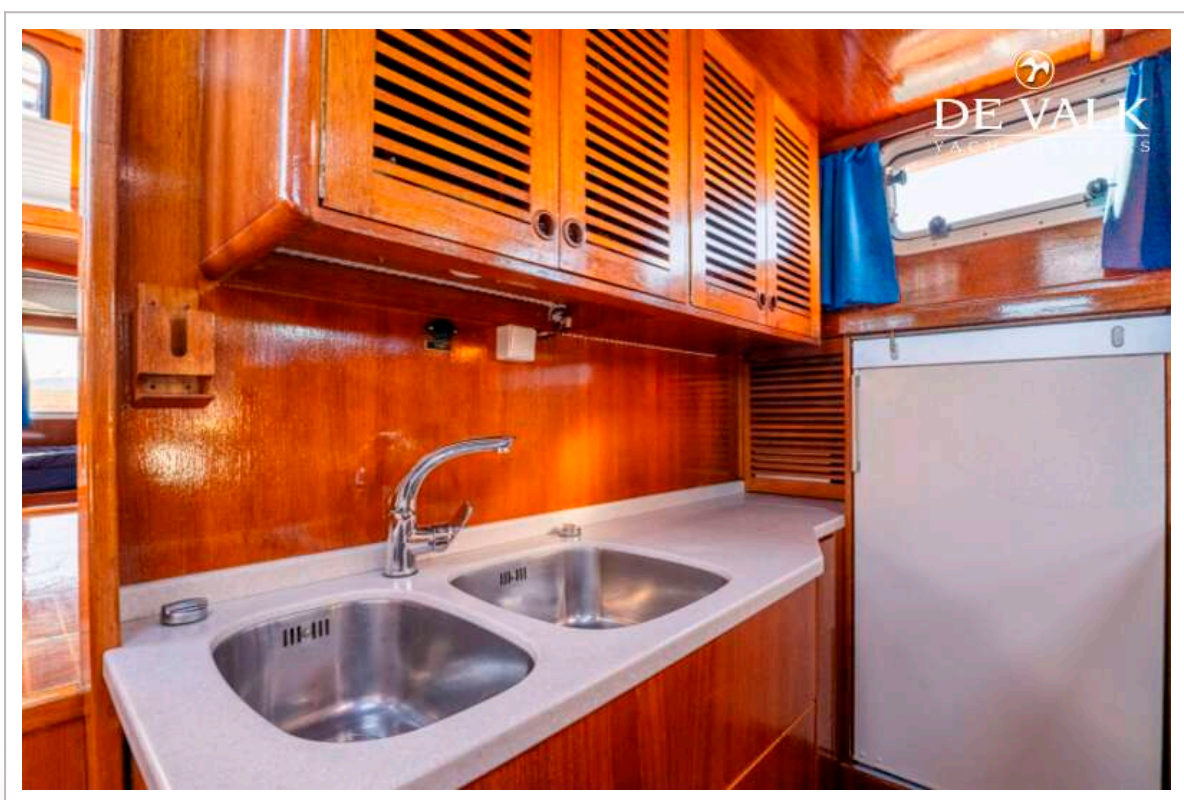




SEA FINN 41

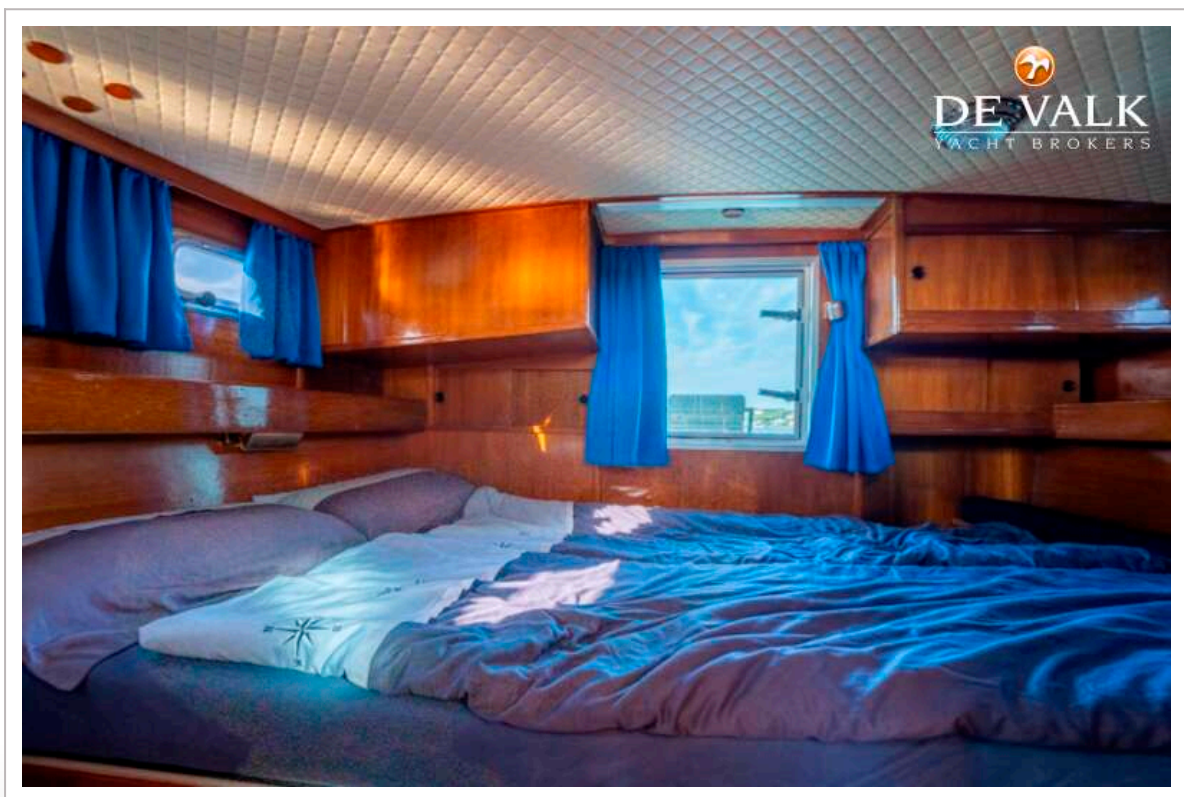
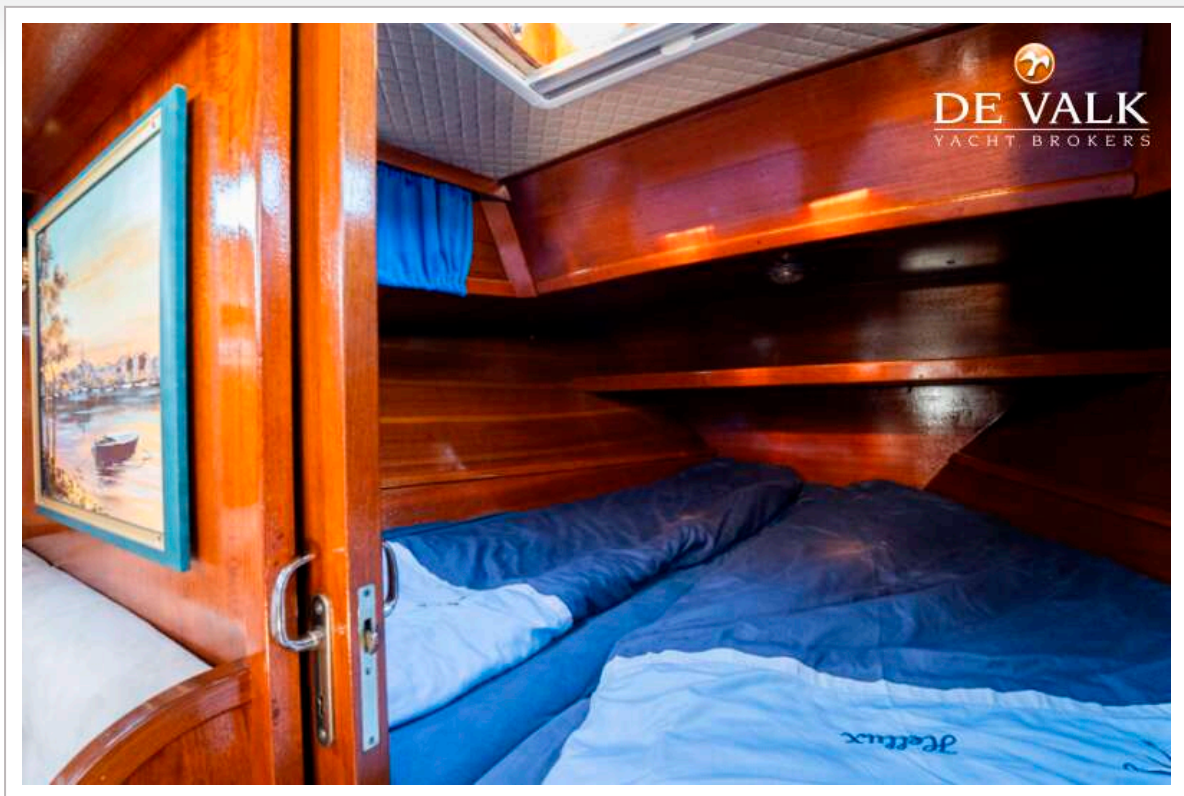


SEA FINN 41



SEA FINN 41





SEA FINN 41

