



DE VALK
YACHT BROKERS



BENETEAU OCEANIS CLIPPER 42 CC



DE VALK
YACHT BROKERS

BENETEAU OCEANIS CLIPPER 42 CC

BROKER'S COMMENTS

Beneteau Oceanis Clipper 42 CC center cockpit , owners version, offers all you want for long stay and living aboard. An easy to handle sail plan and impressive option list make her a fantastic sailing yacht for a couple with a small family. She has a great living space with an enormous owners cabin and she has been kept in absolute top maintained condition.

Sofia Iliia-Salvanou

SPECIFICATIONS

Dimensions	12.74 x 3.91 x 1.80 (m)	Builder	BENETEAU
Built	2005	Cabins	2
Material	GRP	Berths	6
Engine(s)	1 x YANMAR 4JH3-TE diesel	Hp/Kw	75.00 (hp), 55.20 (kw)
Asking price	sold (VAT)	Lying	at sales office

CONTACT

Sales office	De Valk Corfu	Telephone	(+30) 6948681503
Address	New Port of Corfu, near Gouvia Marina 490 83 Corfu GR	E-mail	corfu@devalk.nl

DISCLAIMER

These particulars are given in good faith as supplied but cannot be guaranteed.



BENETEAU OCEANIS CLIPPER 42 CC

GENERAL

Model	BENETEAU OCEANIS CLIPPER 42 CC
Type	sailing yacht
LOA (m)	12,74
LWL (m)	11,70
Beam (m)	3,91
Draft (m)	1,80
Air draft (m)	16,15
Headroom (m)	1,90
Year built	2005
Launched	2007
Builder	BENETEAU
Country	France
Designer	Jean Mari Finot
Displacement (t)	8,96
Ballast (tonnes)	cast iron and lead 2,5
Gross tonnage	17,5
CE norm	B
Hull material	GRP
Hull colour	white
Hull shape	round-bilged
Keel type	fin keel with bulb
Rubbing strake	stainless steel
Deck material	GRP
Deck finish	synthetic teak
Superstructure deck finish	non-skid moulded in
Cockpit deck finish	synthetic teak
Window frame	aluminium
Window material	perspex
Deckhatch	LEWMAR
Portholes	aluminium



BENETEAU OCEANIS CLIPPER 42 CC

Fuel tank (litre)	polyethylene
Fuel tank 2 (litre)	polyethylene
Level indicator (fuel tank)	Gauge
Fuel daytank (litre)	254
Freshwater tank (litre)	polyethylene 500 in 2 tanks
Blackwater tank (litre)	polyethylene 70
Level indicator (blackwater)	Gauge
Wheel steering	hydraulic
Outside helm position	yes
Emergency tiller	yes
More info on hull	Excellent condition

ACCOMMODATION

Cabins	2
Berths	6
Layout	2 cabins version
Floor	wood
Saloon	yes
Heating	diesel ducted hot air Webasto
Chart table	yes
Dinette	yes
Dinette to convert into berth	yes
Galley	yes
Countertop	Duropal
Sink	stainless steel
Cooker	calor gas
Oven	yes
Fridge	yes
Hot water system	220V
Water pressure system	electrical
Manual and/or foot pump	yes



BENETEAU OCEANIS CLIPPER 42 CC

Crockery	yes
Owners cabin	double bed
Bed length (m)	1,90 x 1,60
Wardrobe	hanging/drawers/shelves
Bathroom	en suite
Toilet	en suite
Toilet system	electric
Wash basin	in the bathroom
Shower	en suite
Guest cabin 1	double bed
Bed length (m)	1,80
Wardrobe	drawers and shelves
Bathroom	en suite
Toilet	en suite
Toilet system	electric
Wash basin	in the bathroom
Shower	en suite

MACHINERY

No of engines	1
Make	YANMAR
Type	4JH3-TE
HP	75
kW	55.20
Fuel	diesel
Year installed	2006
Maximum speed (kn)	9
Cruising speed (kn)	6
Consumption (l/hr)	4
Range (nm)	380
Engine hours	1301



BENETEAU OCEANIS CLIPPER 42 CC

Engine cooling system	freshwater heat exchanger
Drive	sail-drive
Engine controls	bowden cable
Gearbox	hydraulic
Batteries	yes
Start battery	100AH
Service battery	3X140AH 1X Lithium BOS LE300 56AH
Battery charger	Dolphin
Inverter	Mastervolt 700W
Solar panel	4x 100 Watt Flinsolar + Victron MPPT 75/15
Shorepower	with cable

NAVIGATION

Compass	yes
Depth sounder	yes
Depth sounder/log	yes
Log	yes
Windset	yes
VHF	yes
Autopilot	yes
Radar	yes
Radar/GPS/plotter	Garmin GPSMap 923 xsv + Radar GMR18 HD3
Electronic chart(s)	yes
Navigation lights	yes

EQUIPMENT

Fixed windscreen	yes
Bimini	yes
Cockpit table	yes
Bathing platform	Foldable
Boarding ladder	yes



BENETEAU OCEANIS CLIPPER 42 CC

Gangway	yes
Deck shower	yes
Anchor	yes
Anchor chain	50
Windlass	manual
Windlass aft	electrical
Dinghy	yes
Outboard	2.3 HP Honda
Davits	stainless steel
Sea railing	stainless steel
Railing side opening gates	yes
Life raft	container 2023
Last life raft survey	2023
Lifejackets	yes
Danbuoy	yes
Safety lines on deck	yes
Rope cutter	yes
Fenders	yes
Mooring lines	yes
Spare parts	yes
Tools	yes
Alarm system	yes
Radio-cd player	yes
Cockpit speakers	yes
Speakers in salon	yes
Clock - barometer	yes
Fire extinguisher	yes
Extinguisher in engine room	New
Auto extinguisher system	yes

RIGGING



Rigging	yes
Standing rigging	yes
Material mast	aluminium
Spreaders	yes
Mainsail	yes
Genoa	Furling



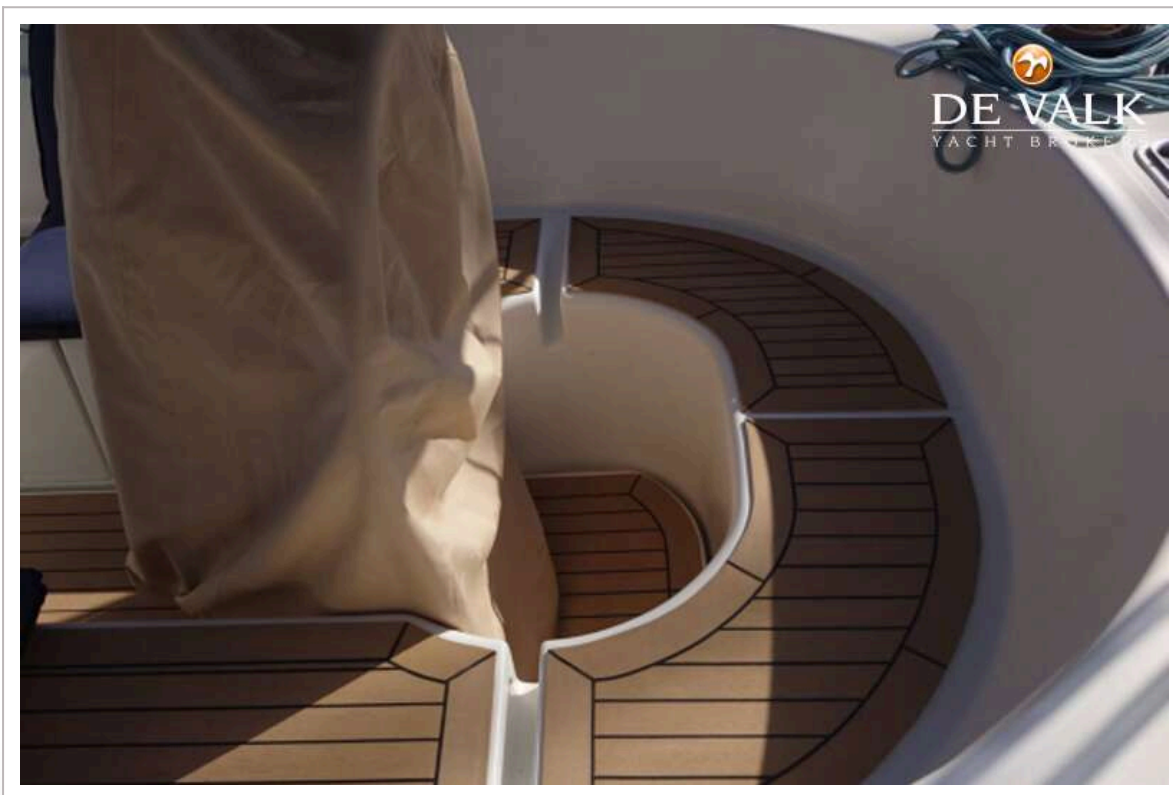
BENETEAU OCEANIS CLIPPER 42 CC



BENETEAU OCEANIS CLIPPER 42 CC



BENETEAU OCEANIS CLIPPER 42 CC



BENETEAU OCEANIS CLIPPER 42 CC



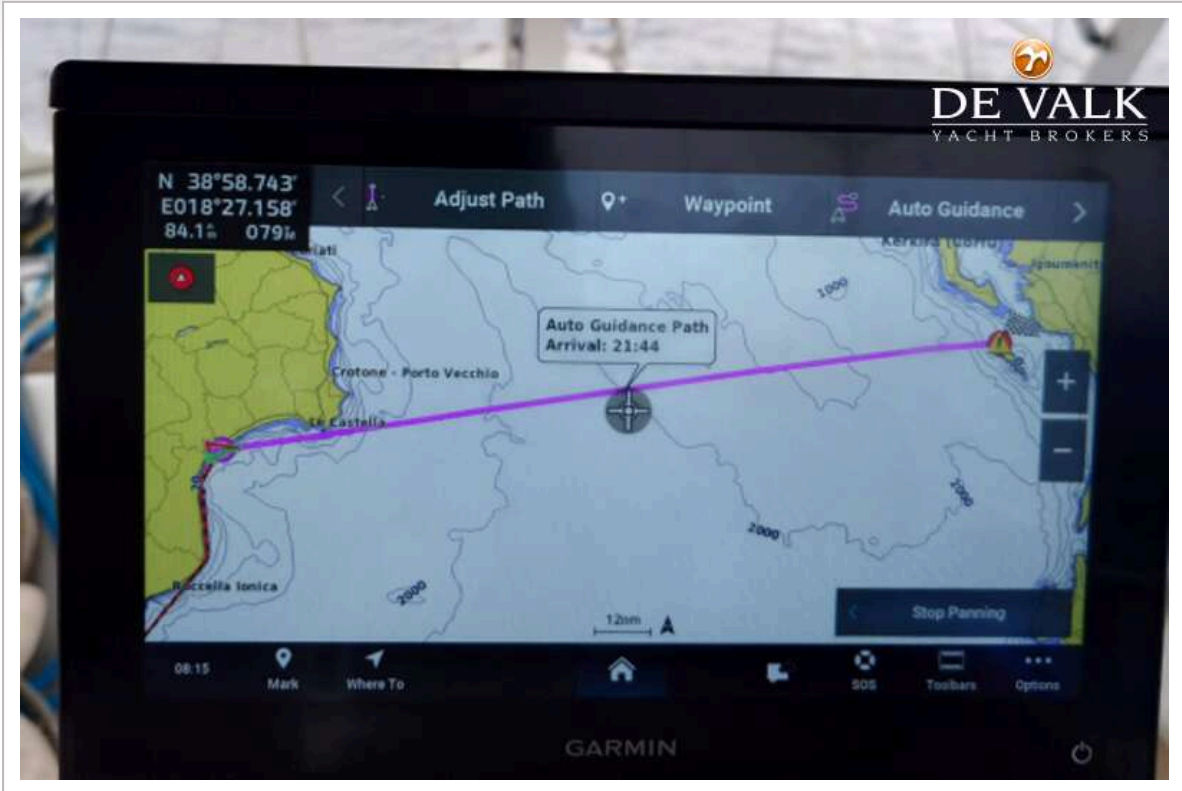
BENETEAU OCEANIS CLIPPER 42 CC



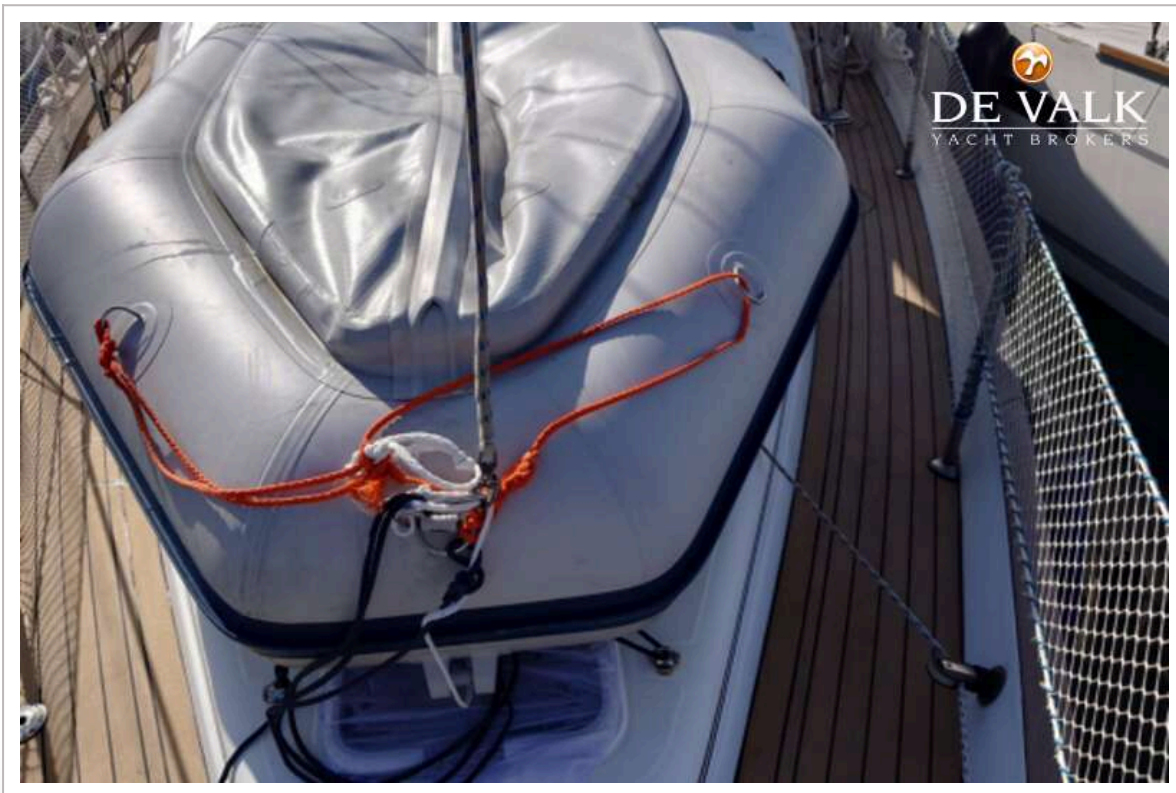
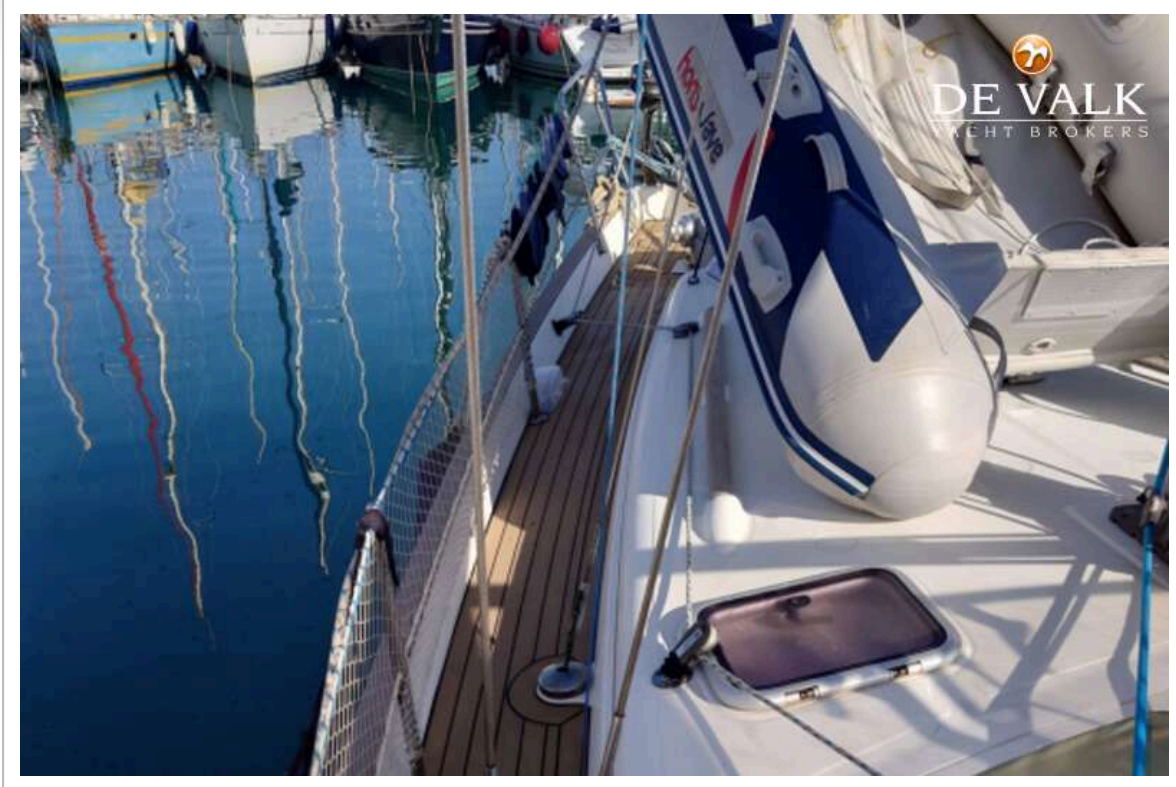
BENETEAU OCEANIS CLIPPER 42 CC



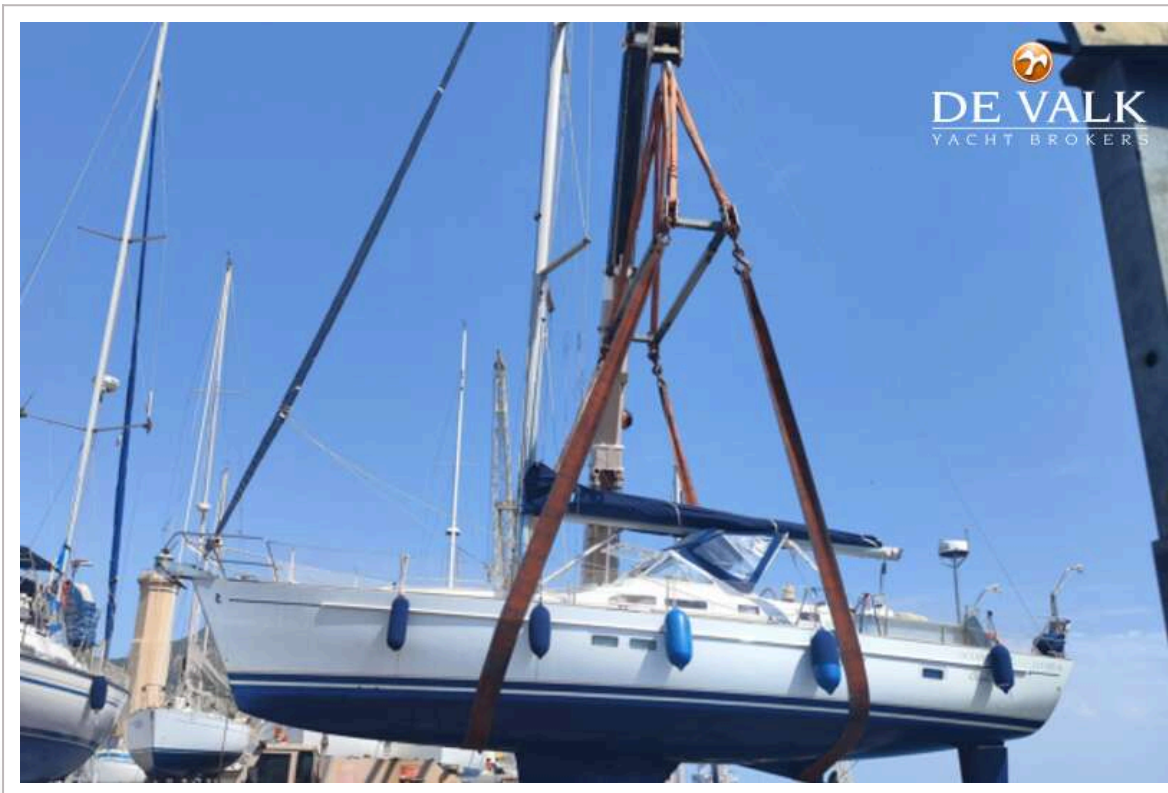
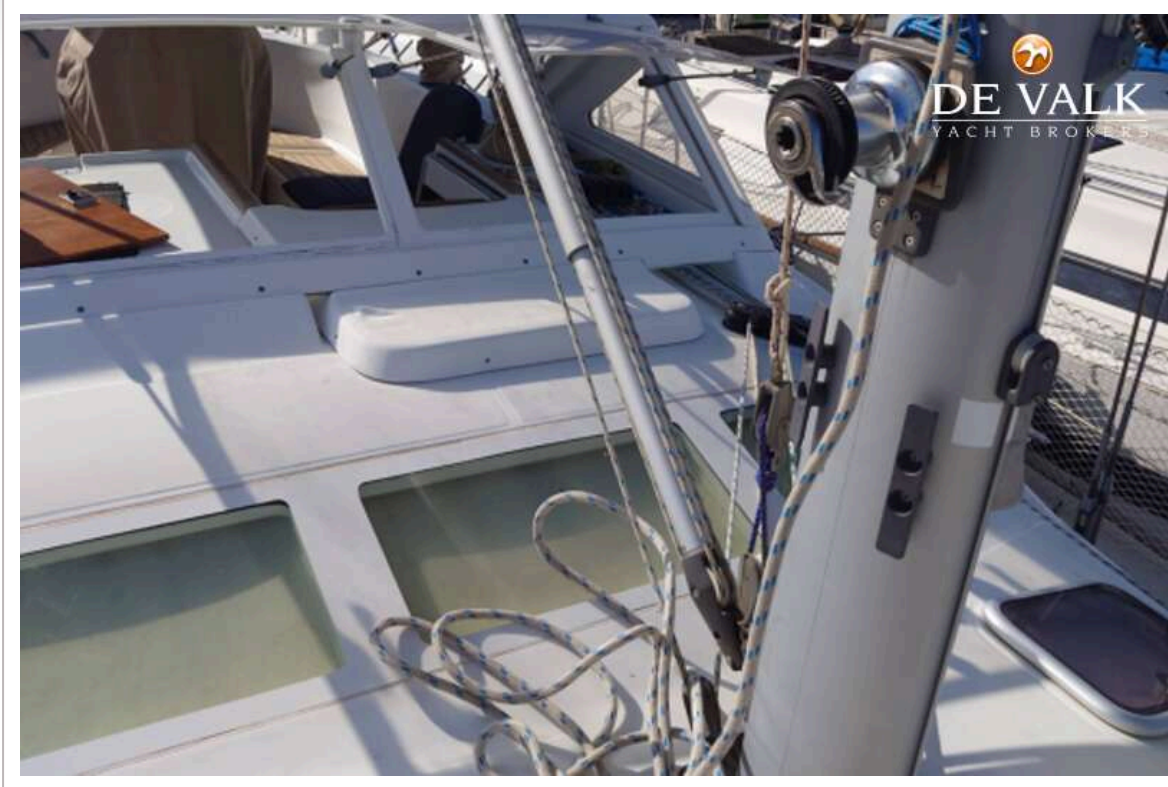
BENETEAU OCEANIS CLIPPER 42 CC



BENETEAU OCEANIS CLIPPER 42 CC



BENETEAU OCEANIS CLIPPER 42 CC



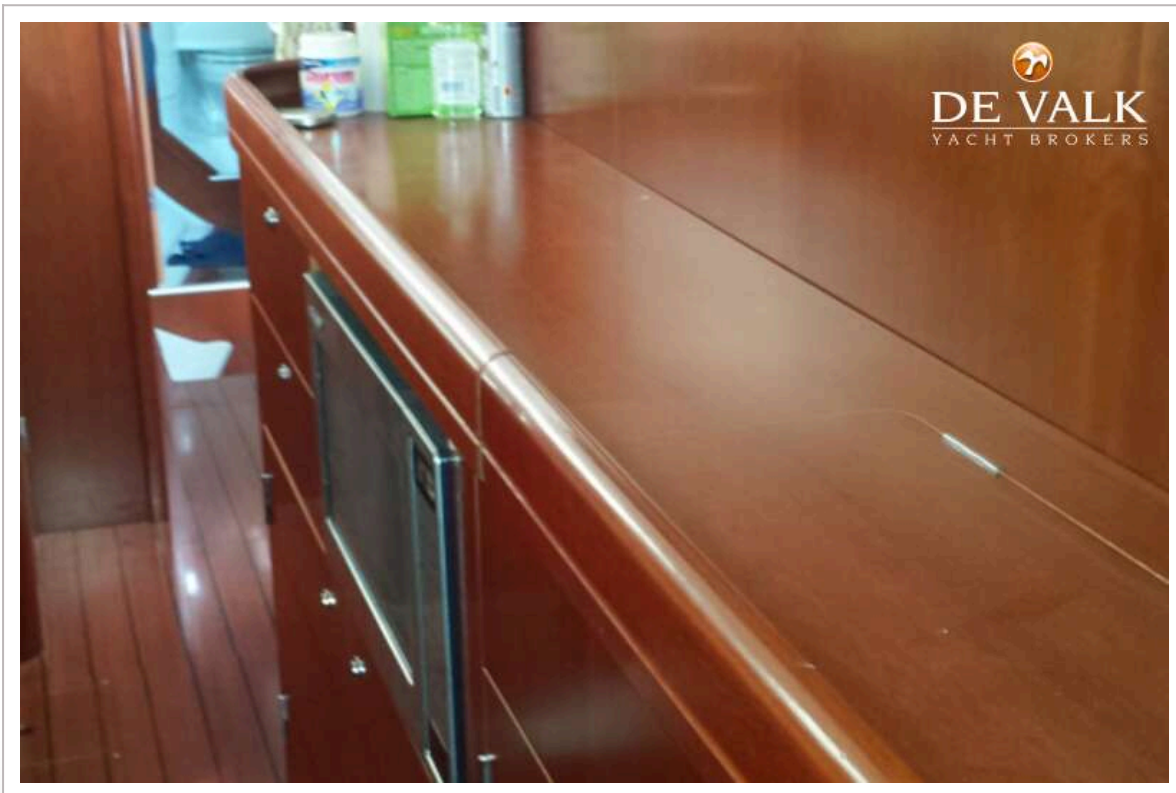
BENETEAU OCEANIS CLIPPER 42 CC



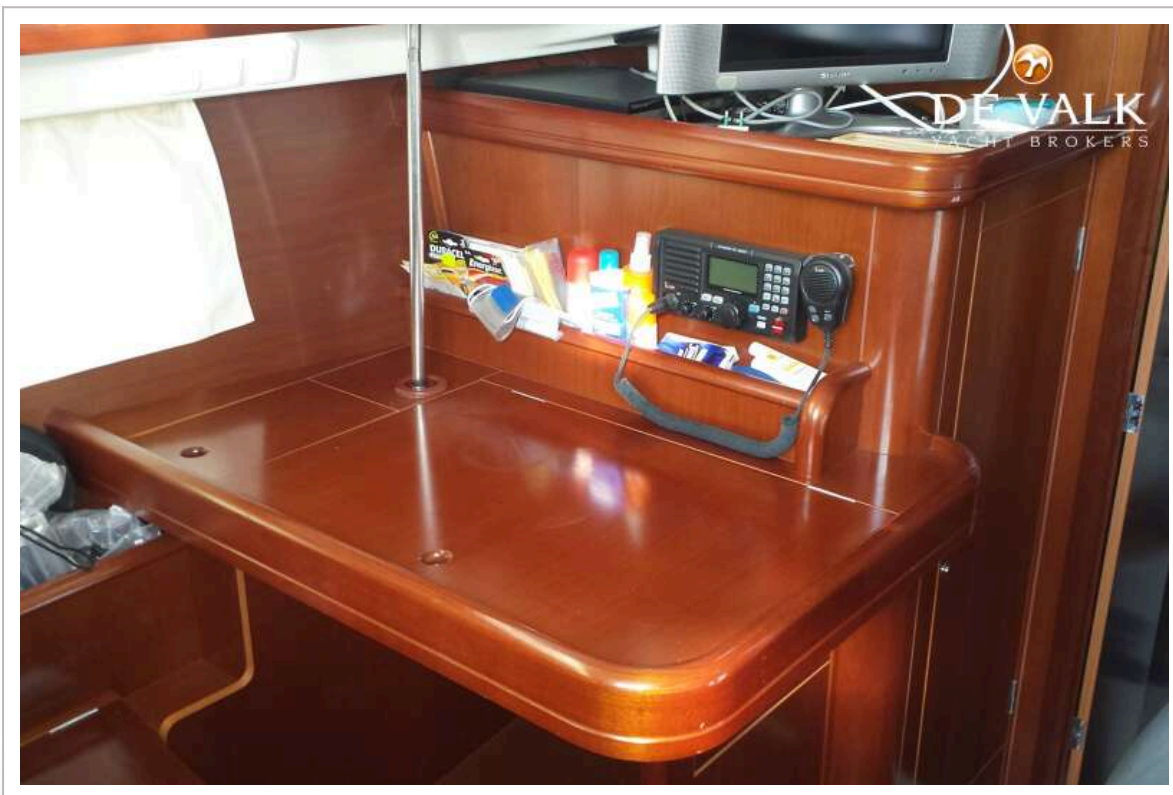
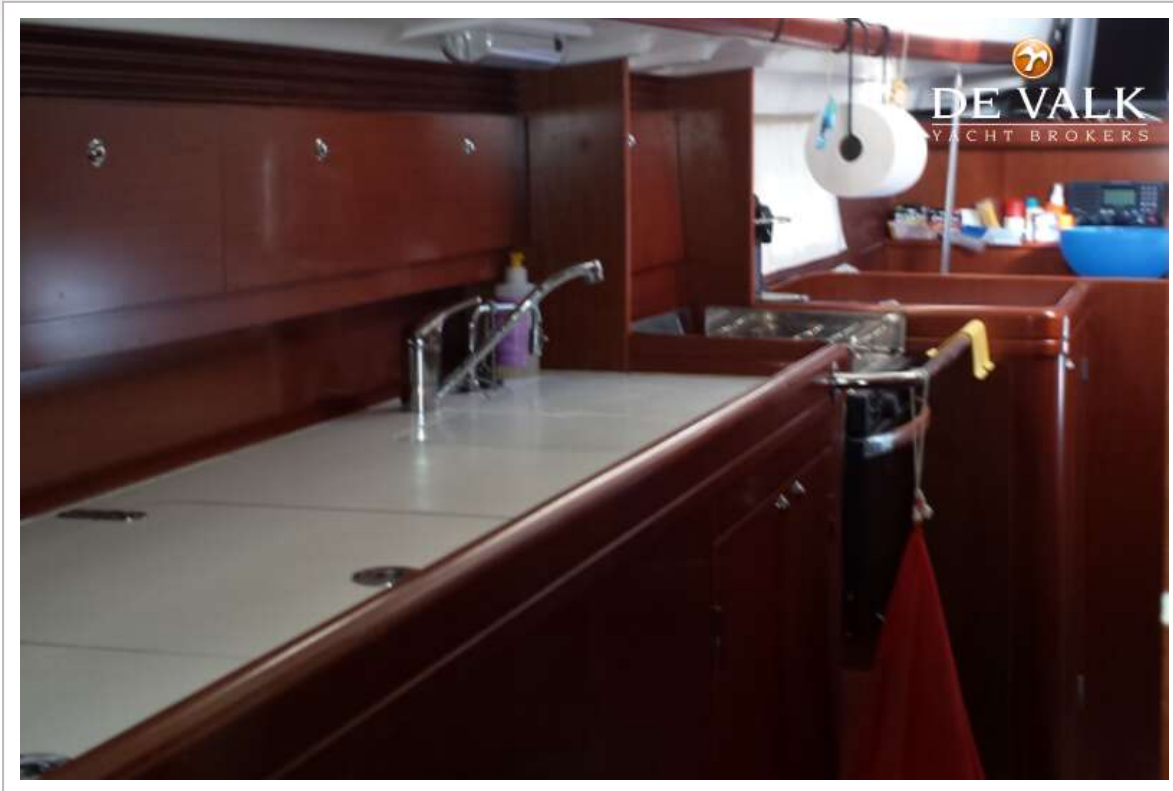
BENETEAU OCEANIS CLIPPER 42 CC



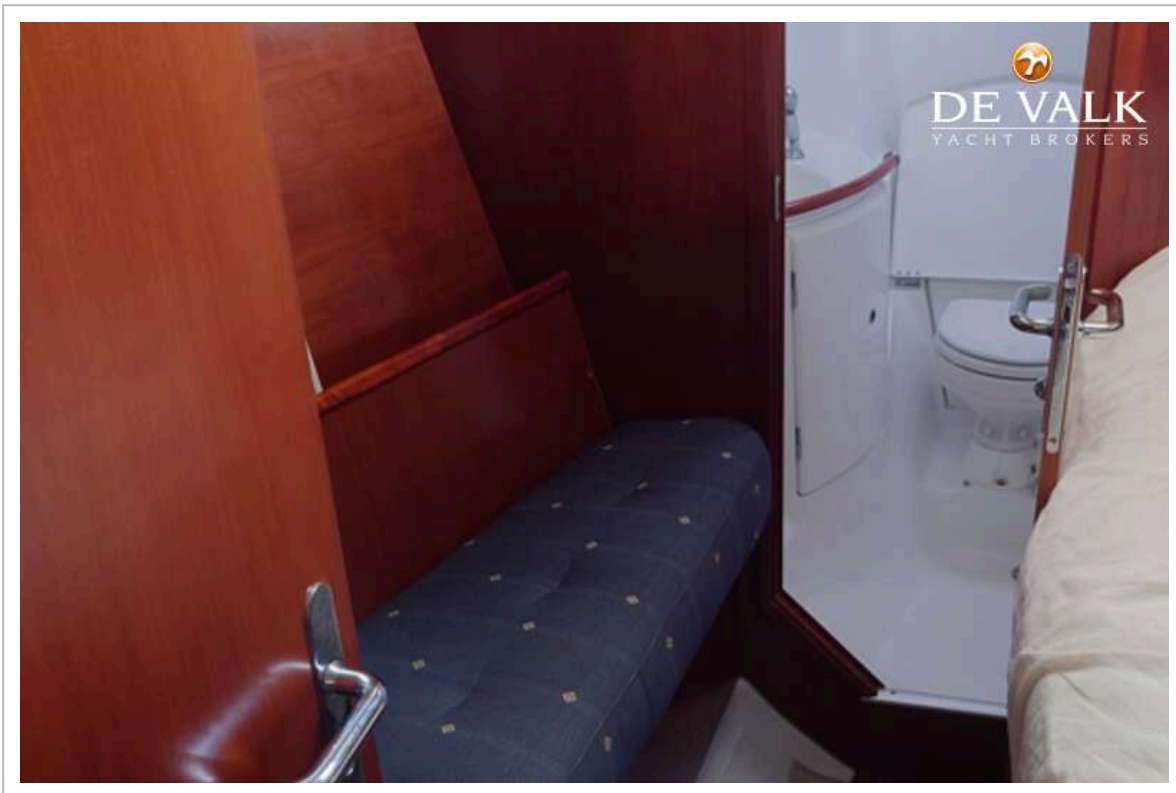
BENETEAU OCEANIS CLIPPER 42 CC



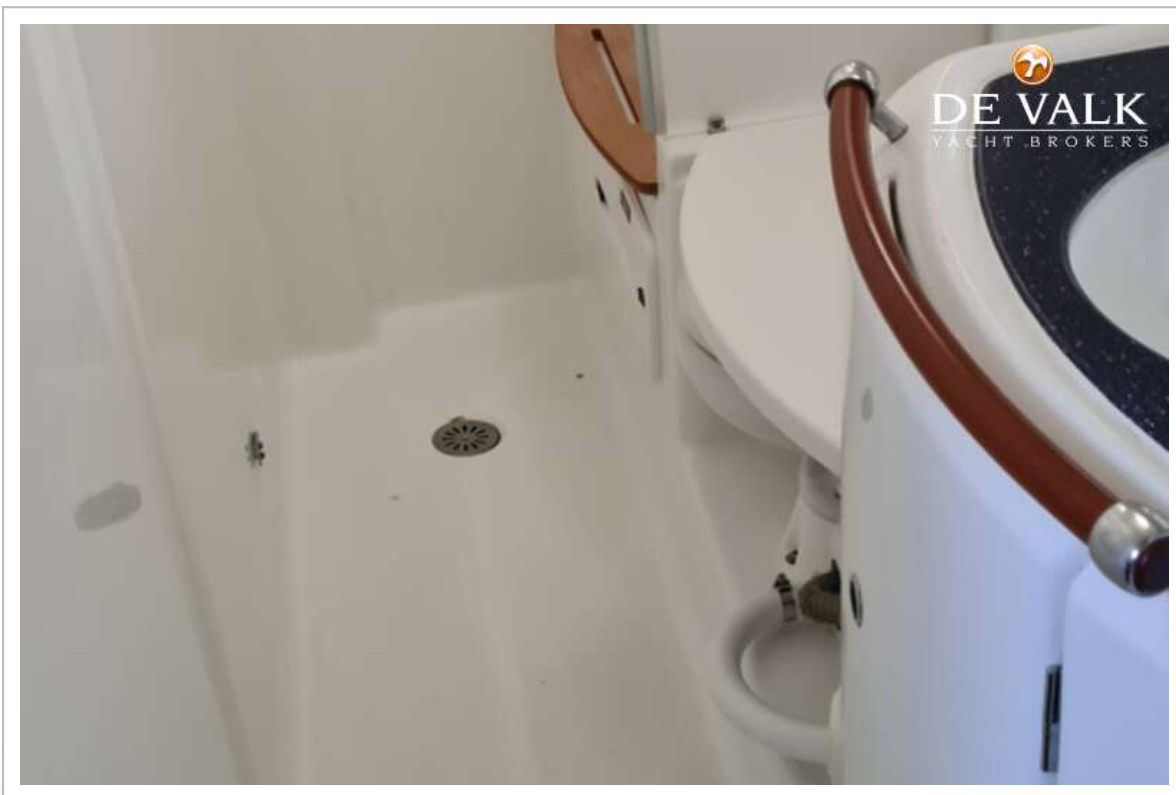
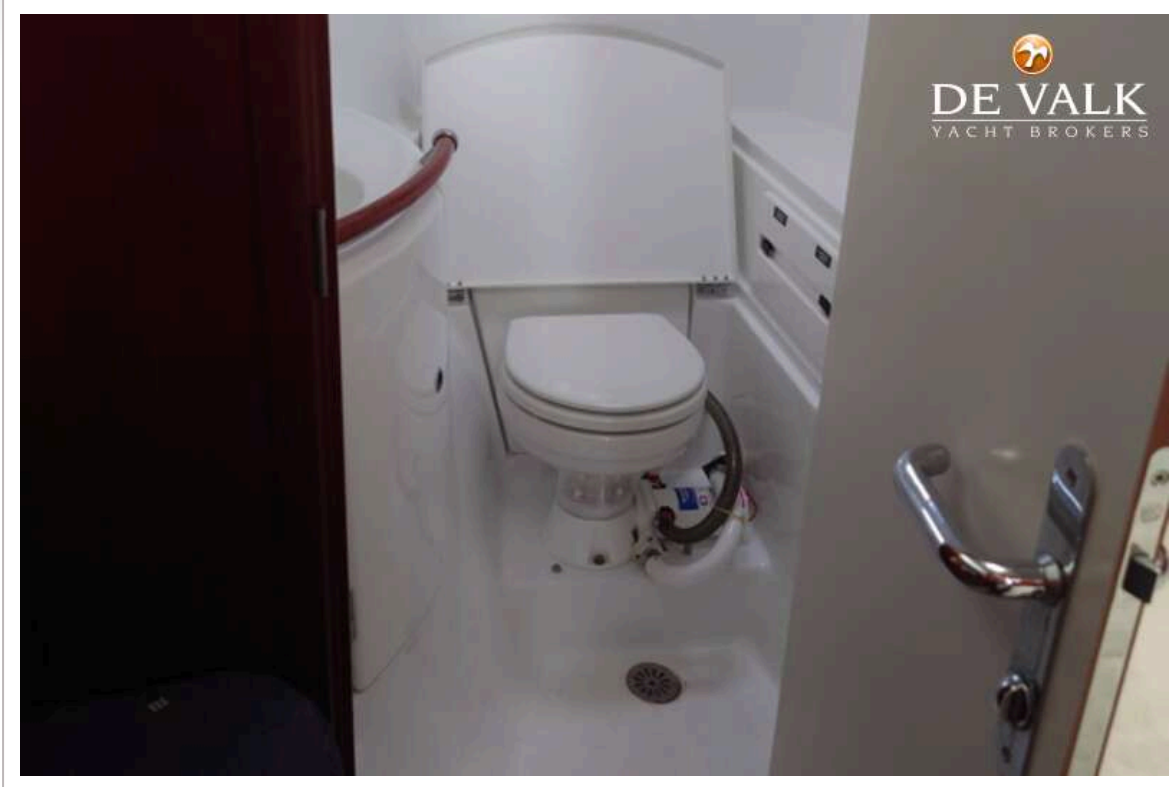
BENETEAU OCEANIS CLIPPER 42 CC



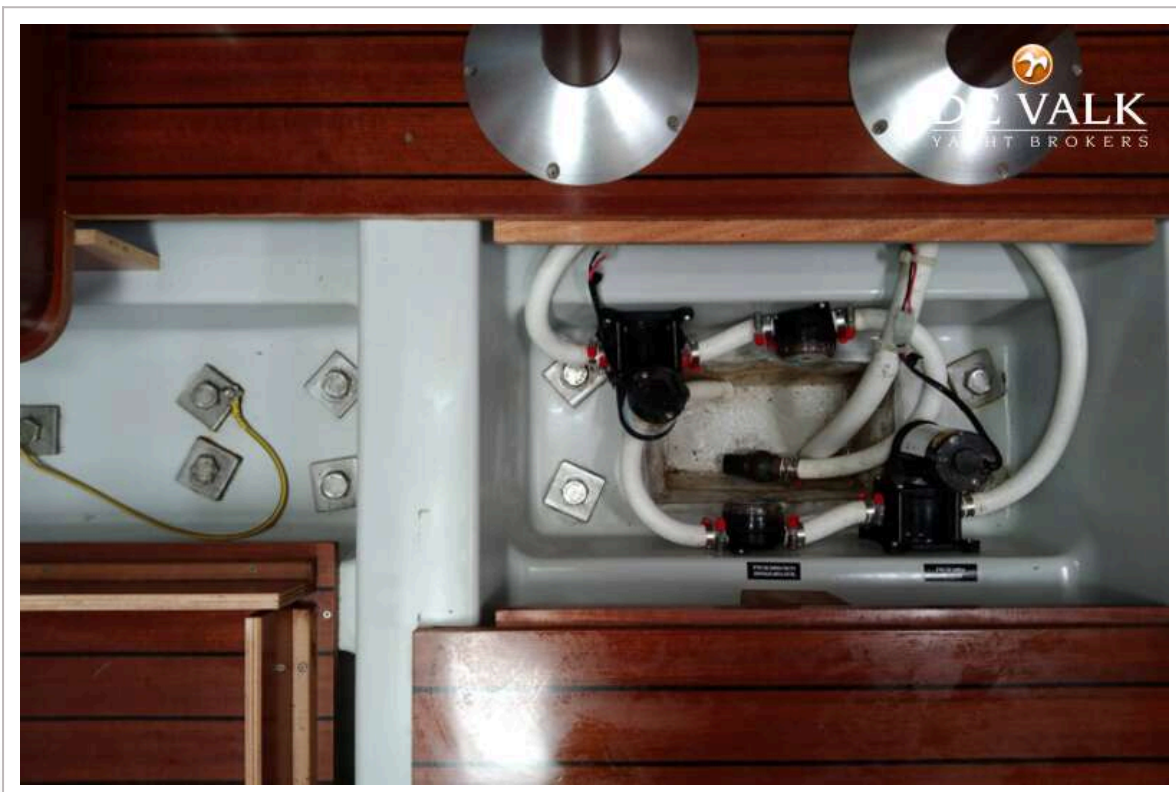
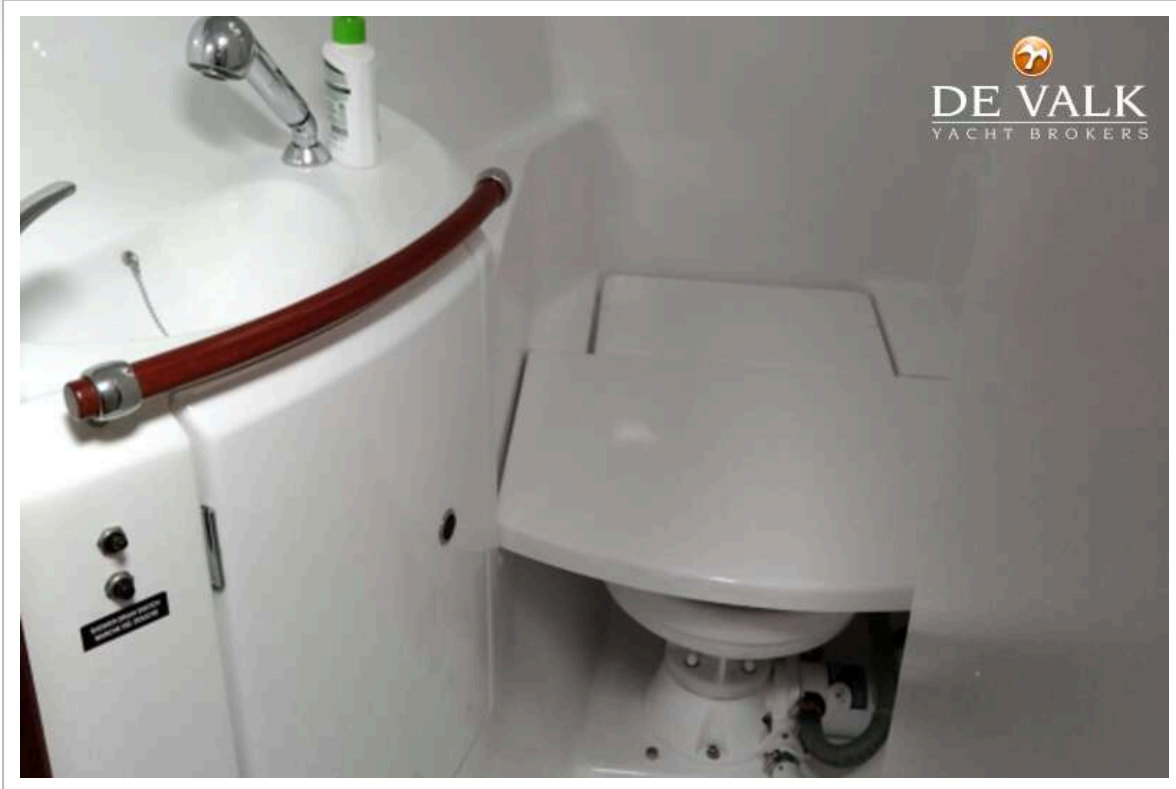
BENETEAU OCEANIS CLIPPER 42 CC



BENETEAU OCEANIS CLIPPER 42 CC



BENETEAU OCEANIS CLIPPER 42 CC



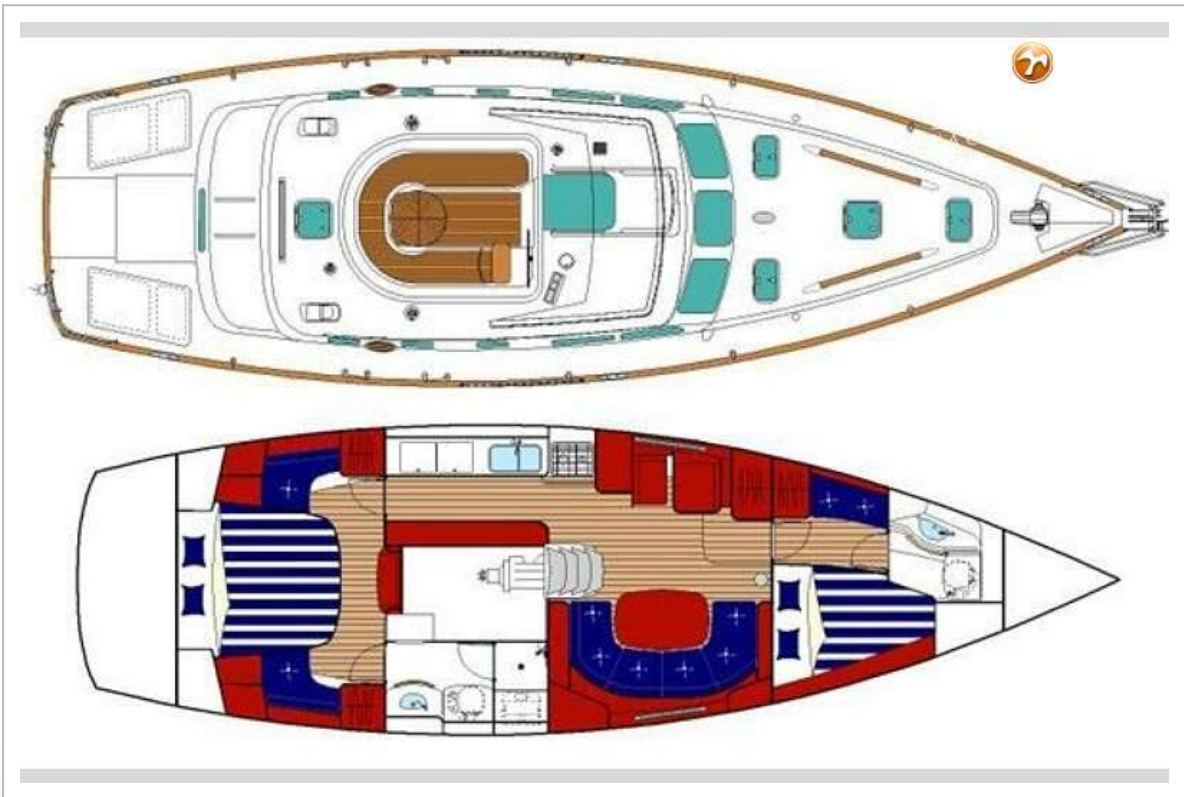
BENETEAU OCEANIS CLIPPER 42 CC



BENETEAU OCEANIS CLIPPER 42 CC



BENETEAU OCEANIS CLIPPER 42 CC



BENETEAU OCEANIS CLIPPER 42 CC

Océanis Clipper 42 CC

Design / Architectes Groupe Finot
Length overall / Longueur hors tout 13.23 m
Hull length / Longueur coque (LIP*) 12.74 m
LWL / Longueur flottaison 11.07 m
Hull beam / Largeur de coque (BB*) 3.91 m
Light displacement / Déplacement lège (MLC*) 8960 kg approx.
Standard draft / Tirant d'eau standard 1.80 m
Sail area / Surface de voilure 81.60 m ²
Mainsail area / Surface GV 40.81 m ²
Genoa area / Surface gînois 48 m ²
Fuel capacity / Réservoir carburant 240 L
Water capacity / Réservoir d'eau 543 L
Max. engine power offered / Puissance moteur max. proposé 76 cv
CE Certification A6/B8/C10

* According to / selon ISO 8666.

PRINCIPAL SPECIFICATIONS

- Design: Groupe Finot.
- Length overall: 13.23 m.
- Hull length: 12.74 m.
- Hull beam: 3.91 m.
- Light displacement: 8960 Kg.
- Draught (standard deep keel): 1.80 m.
- Air draught: 16.15 m.
- Fuel capacity: 240 L.
- Fresh water capacity: 543 L.
- Maximum engine power: 82 HP.
- Gross tonnage: 17.05 T.
- CE Certification: A6 / B8 / C10.

SAIL AREA

Designed sail area: 88.81 m².

- Mainsail: 40.81 m².
- Genoa: 48 m².
- Spinnaker: 106.63 m².

- DECK -

The deck is sandwich construction (glass fibre and balsa) for an optimal strength/weight ratio, as well as excellent thermal and sound insulation.

A "diamond point" non-slip surface increases safety over all areas of movement on deck.

SAIL PLAN

- I: 16.49 m.
- J: 4.37 m.
- P: 12.7 m.
- E: 5.79 m.
- LP: 6.12 m.

- HULL -

The hull is single-skinned GRP construction. Reinforced points (keel, rudder, chain plates, hull-deck joint) help to strengthen the structure.

A single-skinned structural inner moulding is bonded and laminated to the hull. Its structural role is important as it takes and absorbs the stresses at pressure points (shroud chain plate tie rods, keel, rudder etc.) and spreads any loads **guaranteeing reduced strain on the hull.**


The surface material of the inner moulding makes **cleaning easier** and provides a **better finish.**

The standard hull colour is white with blue and silver livery. Steel Blue is available as an option.

ON DECK

- 18 / 12 M.O s/s stem head fitting with 2 fairleads and rollers.
- 18 / 12 M.O s/s open pulpit with navigation lights.
- Stainless steel stern pulpits with life buoy support and teak outboard engine support closed by two covered guard rails.
- Stern pulpits with removable seats.
- LEROY SOMMER 1000 W up/down electric windlass.
- Self-draining anchor locker with 2 opening hatches and bitter end eye bolt.
- Teak capped bulwark surrounding the deck.
- 6 anodised aluminium mooring cleats with s/s protection on bulwark.
- Forestay chainplate with slats on the stemhead fitting.
- 2 s/s lower shroud chainplates, 2 s/s streamlined shroud chainplates.
- Anodised aluminium fuel and water fillers.
- 18 / 12 M.O s/s stanchions with two sets of covered s/s lifelines.



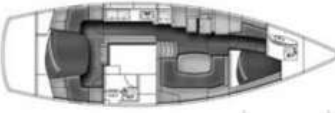


- SPARS / RIGGING -

- Anodised aluminium deck stepped mast.
- 2 spreaders angled aft (20°).
- Spinnaker pole track on the mast.
- Partner fitting with articulated blocks to return halyards and reef lines to cockpit.
- Stainless steel wire rigging for shrouds, lower shrouds, forestay and twin backstays.
- Low stretch main halyard and genoa halyard.
- 2 automatic reefing lines.
- 1 mainsheet with blocks, 2 genoa sheets.
- 1 genoa furler with control line led back to cockpit.
- 1 boom topping lift.
- Rigid boom vang.

- SAILS -

- 1 semi batten mainsail with automatic reef system.
- "Easy bag" mainsail bag with lazy jacks.
- One 140% furling genoa with anti-UV protection strip.



INTERIOR ACCOMMODATION

- COMPANIONWAY -

- 15 mm Altuglass sliding hatch.
- Twin varnished wooden companionway panels.
- 2 handrails.
- 4 moulded wood steps, integrated to the opening engine cover.
- Opening companionway panel on struts for access to engine compartment.

- SALOON TO PORT -


- Nav station.
- Chart table with partitioned storage place and moulded wood fiddle.
- Storage place.
- Panel for on board electronics.
- Tools drawer.
- Navigator's seat with locker.
- 1 Lewmar 688 x 175 fixed porthole with curtain.
- 1 920 x 208 hull fixed porthole with curtain.
- Large three-parts panoramic panel with rigid blinds.
- Lewmar 457 x 247 opening hatch with blind on coach roof.
- Halogen lamp.
- Wooden hull inner planking.

- SALOON TO STARBOARD -

- Sliding saloon table with aluminium base.
- U shaped settee with cushions and backrests.
- Shelves, cupboards, bar furniture.
- Wooden hull inner planking.
- Storage lockers.
- Halogen lamp with independent switches.
- 1 Fixed hull 920 X 208 porthole with curtain.
- 1 Lewmar 627 X 171 opening porthole with curtain.
- 1 Lewmar 457 X 247 opening hatch with blind on coach roof.
- 1 Lewmar 688 X 175 fixed porthole with curtain.

- CENTRAL COCKPIT -

- GRP canopy with opening windscreen in front of helmsman. Built-in companionway sprayhood.
- 1 HARKEN 40.2 STC halyard and manoeuvre winch
- 5 clutches for halyards and manoeuvres.
- 2 x HARKEN 46.2 STC genoa sheet winches.
- Hydraulic wheel mounted on forward starboard bulkhead.
- Leather covered s/s wheel.
- Control panel on cockpit bench seat facade.
- Engine control on bulkhead.
- Instruments panel.
- 12 V plug and mobile lamp.
- Teak laid bench seat.
- Removable cockpit teak laid hatch giving access to the engine room.
- 1 winch handle box.
- Emergency tiller.
- Adjustable helmsman seat.



- GALLEY IN PORT GANGWAY -

- Work surface with moulded wooden fiddle.
- Twin rectangular s/s sinks with chopping board.
- Hot/cold mixed tap.
- Foot pump for ice box discharge and sea water.
- Rubbish bin.
- Vegetable baskets.
- 220 V micro wave oven.
- 2 burners gimbaled s/s stove with protection bar.
- Cutlery drawer.
- Shelves and cupboards along side of the hull.
- Crockery shelf on starboard.
- 12 V, 170 L electric fridge with storage baskets.
- Halogen lamps with independent switches.
- Dust box in floor.
- 1 Lewmar 627 X 171 opening porthole with curtain.
- 2 Lewmar 347 X 171 opening portholes with curtains.

- AFT OWNER'S CABIN -

- 2.00 m x 1.50 m double berth with 120 mm thick mattress.
- 2 hanging lockers.
- Cupboards, shelves.
- Storage lockers.
- Seat with cushion on each side of the bed.
- Vanity/desk with mirror.
- Padded deck head lining.
- 2 Lewmar 347 x 171 opening portholes with curtains.
- Two 340 x 128 fixed hull portholes with curtains.
- 1 Lewmar 627 x 171 opening porthole with curtain aft.
- 1 Lewmar 507 x 392 opening hatch with blind on coach roof.
- Permanent ventilation through dorade vent.
- Halogen lamp and reading lights.

- AFT OWNER'S CABIN HEAD COMPARTMENT -

- One piece moulded for water tightness and easy cleaning.
- Marine toilet with hinged polyester cover.
- Polyester sink with hot/cold water mixer tap.
- Mirrors, cupboards, washing accessories.
- Shower with hot/cold water mixer tap.
- Electric pump for direct evacuation of used shower water into the sea.
- 2 Lewmar 347 x 171 opening portholes with curtains.
- Halogen and fluorescent lamps

- FORWARD CABIN -

- 1.95 m x 1.35 m double berth with mattress.
- Drawer and locker under berth.
- Hanging locker with seat on port.
- Lateral wooden inner planking.
- 1 Lewmar 507 x 392 opening hatch with blind on coach roof.
- Halogen lamp and reading lights.

- FORWARD HEAD COMPARTMENT -

- One piece moulded, equally equipped than the owner's head compartment.
- Opening 527 x 317 mm hatch with blind.

ENGINE EQUIPMENT*

- Engine mounting built into the inner mould.
- Engine compartment insulated with 40 mm foam.
- Lighting to engine compartment.
- Space for generator in engine compartment.
- Filter with sediment reservoir to fuel system.
- Propeller shaft protected by a skeg.
- Fixed three-blade propeller.
- 240 L fuel tank.

* See price list

28/10/2005 code Beneteau 068350 ANG

ELECTRICAL CIRCUIT

- 2 x 140 Amp service batteries.
- 1 x 110 Amp battery.
- 110 V / 220 V battery charger 20 Amp.
- 220 V shore power.
- 5 x 220 V sockets in saloon and galley.
- 12 V/16 functions electrical panel and one 12 V plug.
- Navigation lights.
- Mooring light.
- Deck spot.

WATER CIRCUIT

- One manual bilge pump in cockpit.
- One electric bilge pump.
- 2 Water tanks. (total capacity: 580 L approx).
- Cocks for tank selection.
- 42 L water heater.
- Water pump with expansion bottle.
- Pressurised fresh water unit with compression tank.





OCEANIS Clipper 42 CC



GAS CIRCUIT

- Locker for two gas bottles with air vent (conforms to US standards).

MISCELLANEOUS

- Maintenance kit.
- Owner's manual and user's guide.
- Owner's briefcase.
- 2 winch handles.

PACKS

- YACHT CLUB PACK -

- HARKEN 40.2 STCEH / 40.2 STC electric winch to port.
- Hot and cold cockpit shower.
- Waterproof cockpit speakers.
- Ground tackle: 20 Kg Danforth anchor, 32 m chain and 48 m warp.
- Mooring: 4 mooring warps and 6 fenders.
- 8 place settings.

- FI ELECTRONICS PACK -

- On steering wheel console:
 - ST60 wind instrument linked to masthead windvane anemometer with cable and junction box at foot of mast.
 - Raymarine ST60 Tridata instrument (linked to log and depth sounder transducers).
 - GPS plotter with C80LCD 8.4" multifunction colour screen compatible with Navionics Gold cartography.
 - Raymarine ST 6001 autopilot plus LSRV2.

- ELECTRONICS OPTIONS NOT INCLUDED IN PACK -

- Smart Controller autopilot remote control.
- PC Interface.
- Gyro compass sensor.
- Radar (radome only).

OTHER OPTIONS AVAILABLE

- Steel blue hull.
- Teak side decks.
- Spinnaker gear.
- In-mast furling.
- Scaysail furling gear with sail.
- Hydraulic gangway with remote control.
- Steering wheel on pivoting column.
- Bow thruster.
- Sun canopy with canopy panel.
- Cockpit cushions.
- Deck washdown pump in chain locker.

- Heating.
- Air conditioning.
- Supplementary battery and battery charger.
- Generator.
- Hob and oven with grill.
- 17" colour TV and radio/ DVD MP3 player.
- Double berth in saloon.
- Laminated soles.
- Windex windvane.
- Electric windlass control in cockpit.
- Rigid WC holding tanks.

