



DE VALK
YACHT BROKERS



ONE OFF MOTORSAILER



DE VALK
YACHT BROKERS

ONE OFF MOTORSAILER

BROKER'S COMMENTS

Dekker One Off "Eye of the Wind", the built started in 1992 and was completed in 1998 and is done by craftsman. Solid wooden details, a lot stainless steel, well equipped. The current, second owner kept "Eye of the wind" in a very good condition, mostly ashore during the winter period, many upgrades, Mostly moored on fresh water. Viewing possible by appointment.

Reinier van der Wolf

SPECIFICATIONS

Dimensions	13.30 x 3.75 x 1.60 (m)	Builder	Scheepswerf Aalsmeer
Built	1992	Cabins	2
Material	GRP	Berths	5
Engine(s)	1 x Ford 2715E diesel	Hp/Kw	120.00 (hp), 88.32 (kw)
Asking price	€ 99.000 (VAT Paid)	Lying	at sales office

CONTACT

Sales office	De Valk Monnickendam B.V.	Telephone	+31 (0)299 65 63 50
Address	Hoogedijk 6 1145 PM Katwoude NL	E-mail	monnickendam@devalk.nl

DISCLAIMER

These particulars are given in good faith as supplied but cannot be guaranteed.



ONE OFF MOTORSAILER

GENERAL

Model	ONE OFF MOTORSAILER
Type	sailing yacht
LOA (m)	13,30
Beam (m)	3,75
Draft (m)	1,60
Year built	1992
Launched	Launched in 1998
Builder	Scheepswerf Aalsmeer
Country	The Netherlands
Ballast (tonnes)	lead in GRP 3 tonnes
Hull material	GRP
Hull colour	white
Hull shape	S-bilged
Keel type	long keel
Superstructure material	Ply wood + teak
Rubbing strake	stainless steel
Deck material	Ply wood
Deck finish	teak Complete teak deck refit 2019 at Klerk Yacht Service
Superstructure deck finish	paint
Cockpit deck finish	teak
Antifouling (year)	2024
Window frame	aluminium
Window material	tempered glass
Deckhatch	yes
Portholes	yes
Radar arch	Stainless steel radar pole
Fuel tank (litre)	A total of approx. 450 litre
Level indicator (fuel tank)	yes
Freshwater tank (litre)	A total of approx. 800 litre
Level indicator (freshwater)	yes



ONE OFF MOTORSAILER

Blackwater tank (litre)	Approx. 100 litre
Level indicator (blackwater)	One level indicator defect, new indicator on board need to be placed
Greywater tank (litre)	Approx. 110 litre
Level indicator (greywater)	yes
Wheel steering	hydraulic

ACCOMMODATION

Cabins	2
Berths	5
Interior	Classic solid wood interior
Layout	Two single berths in front, bathroom (shower, washbowl, toilet), corridor with single/double berth, wheel position with settee, aft cabin with galley and round seat.
Floor	wood
Open cockpit	Center cockpit
Aft deck	yes
Heating	diesel ducted hot air Webasto Air Top Evo 5500 (2010)
Dinette	In the aft cabin
Dinette to convert into berth	Two single berths
Galley	yes
Countertop	stainless steel
Sink	Double sink
Cooker	calor gas Gimeg 4 burner
Extractor	Atag
Microwave	yes
Microwave/oven combi	HE Microwave
Fridge	Large fridge with freezing compartment
Hot water system	Isothemp Slim boiler 15 litre
Water pressure system	electrical Jabsco Par-Max 3.5
Owners cabin	twin single
Wardrobe	yes



ONE OFF MOTORSAILER

Bathroom	separate
Toilet	yes
Toilet system	electric
Wash basin	yes
Shower	yes
Guest cabin 1	Single/ double berth in the corridor

MACHINERY

No of engines	1
Make	Ford
Type	2715E
HP	120
kW	88.32
Fuel	diesel
Year of overhaul	2007, by Motoren Revisie De Schiffart B.V.
Engine cooling system	freshwater heat exchanger There are two separate water inlets for the main engine
Drive	shaft
Gearbox	Velvet
Engine controls	bowden cable Morse MT2
Bowthruster	electric Sidepower
Exhaust	watercooled
Propeller type	fixed
Propeller blades	3 blades
Shaft lubrication	grease
Electric bilge pump	Two separate electric bilge pumps for a separate area each
Start battery	1 x 12V
Service battery	2 Sportline batteries for 24v, 1 battery for 12V
Battery monitor	Victron BMV-6005 monitor and Victron BMV-6025 monitor
Battery charger	Sterling 24/12V, Sterling 12/20A
Inverter	Victron Inverter 24/350W



ONE OFF MOTORSAILER

Battery charger/inverter	Victron Phoenix Multiplus 24/1600-40
Wind generator	Superwind
Solar panel	Mounted on the davits
Shorepower	with cable
Insulation transformer	Sterling Zinc saver / Galvanic isolator 30 AMP max
Extra info	1 x 12V alternator, 1 x 24V alternator
Extra info	Engine room blower
Extra info	Racor Fuelfilter

NAVIGATION

Depth sounder/log	Raymarine ST60
Windset	Raymarine ST60
VHF	Nordstar Explorer 710
Autopilot	Cetrek Pilot 730
Radar	Navico broadband 4G radar
Radar/GPS/plotter	Lowrance HDS-10
Weather receiver	Bresser Weather station
AIS transponder	AIT 2000, Class B
Radio receiver	FMD25 Fastnet Radio Marine Decoder with Activ antenna AA-15

EQUIPMENT

Fixed windscreen	yes
Cockpit cover	New cockpit cover (2021)
Sun awning	4 poles and sun awing
Winter cover	yes
Cockpit chairs	Two chairs fixed on the aftdeck another two chairs are stored in the cockpit
Bathing platform	Stainless steel / teak bathing platform
Anchor	Galvanized anchor
Anchor chain	Galvanized chain



ONE OFF MOTORSAILER

Windlass	electrical
Deck wash	yes
Davits	stainless steel
Davits controls	manual
Sea railing	stainless steel
Wiper	2x
Horn	Yes, and with automatic programmable fog horn
Radar reflector	Echomax Active-XS activ radar reflector (2012)
Fenders	yes
Mooring lines	yes
TV	With manual lifting system
TV receiver	Raymarine 33STV TV antenne generation III (2019)
Clock - barometer	Plastimo clock and separate barometer
Fire extinguisher	yes

RIGGING

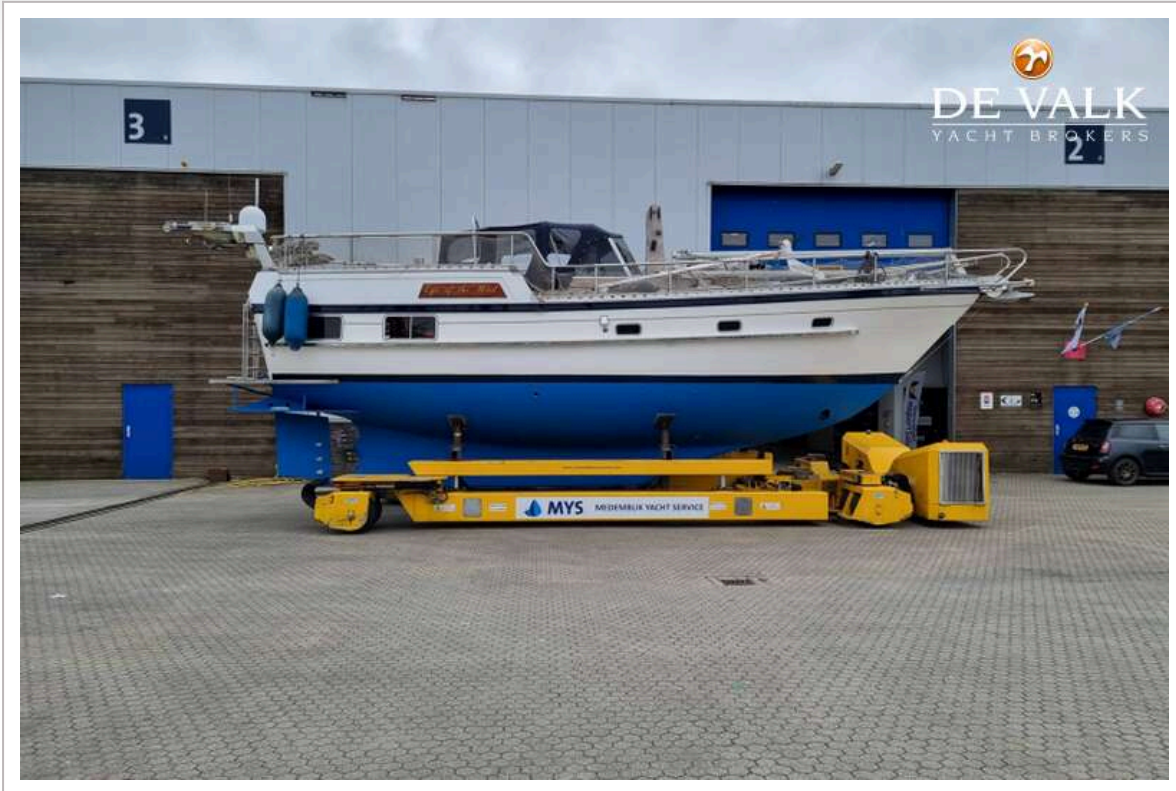
Rigging	sloop
Standing rigging	wire
Material mast	aluminium
Spreaders	1x
Mast lowering system	Electric mast lowering system
Mainsail	yes
Stoway mast	yes
Cutterstay	yes
Genoa furler	yes
Gennaker	The UV strip need to be replaced
Reefing System	main in-mast furling
Winchcovers	yes
Extra info	Whinches 2 x Lewmar 30, 2 x Lewmar 9



ONE OFF MOTORSAILER



ONE OFF MOTORSAILER



ONE OFF MOTORSAILER



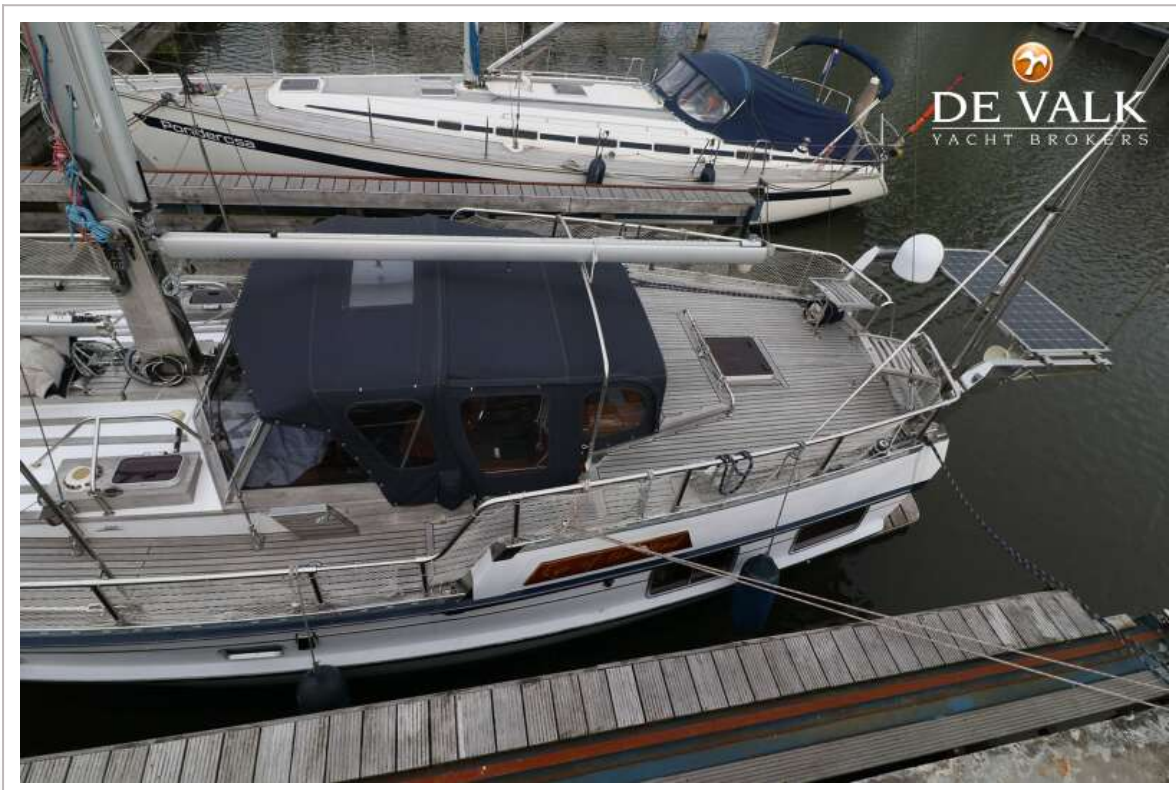
ONE OFF MOTORSAILER



ONE OFF MOTORSAILER



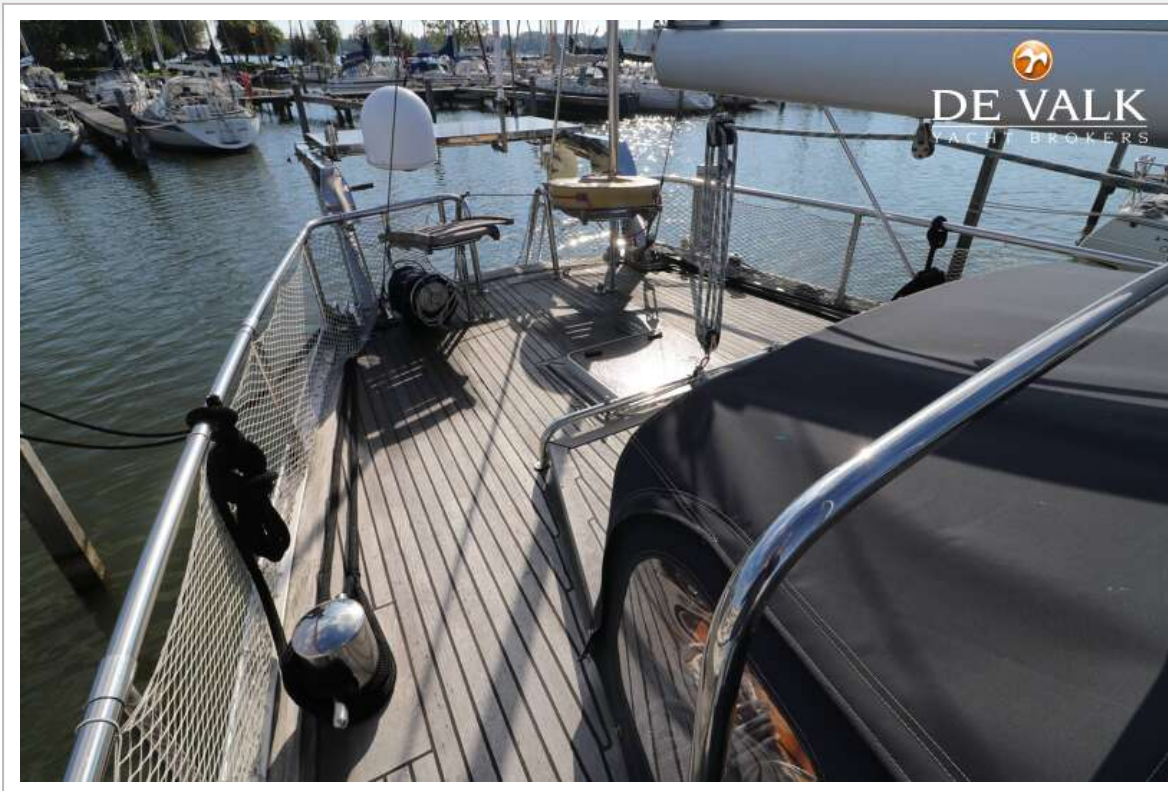
ONE OFF MOTORSAILER



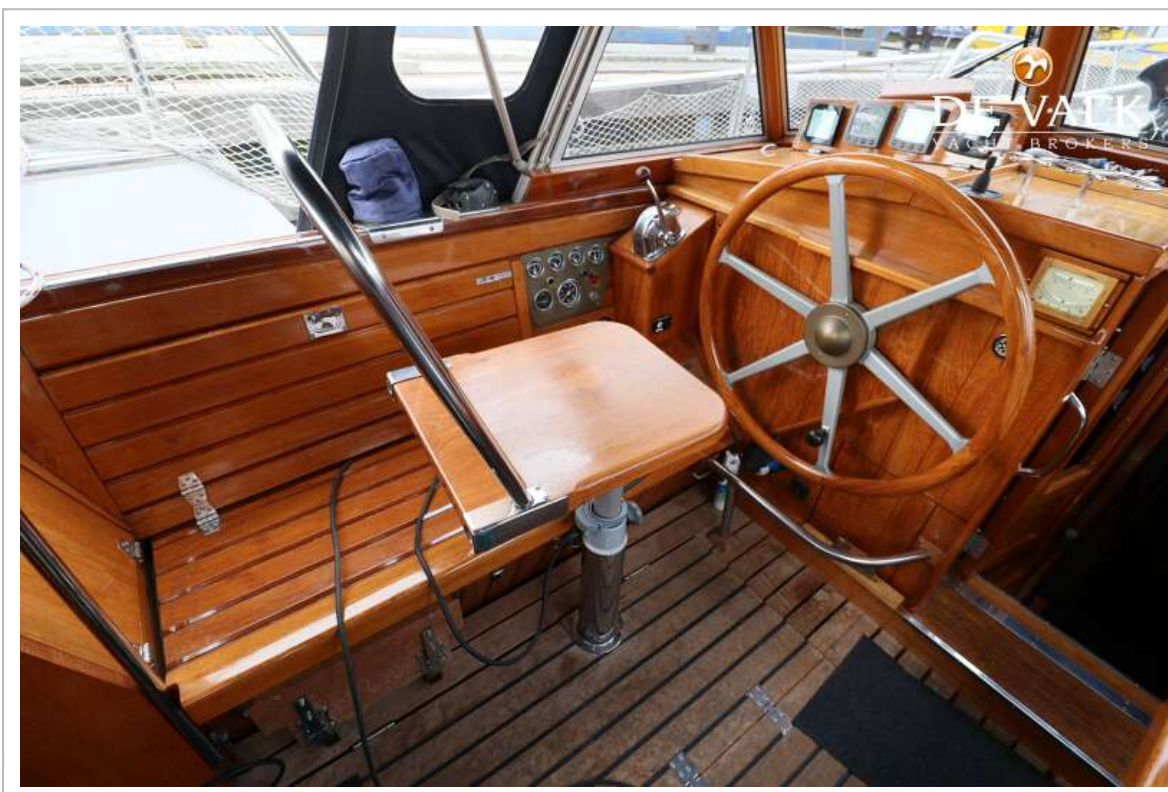
ONE OFF MOTORSAILER



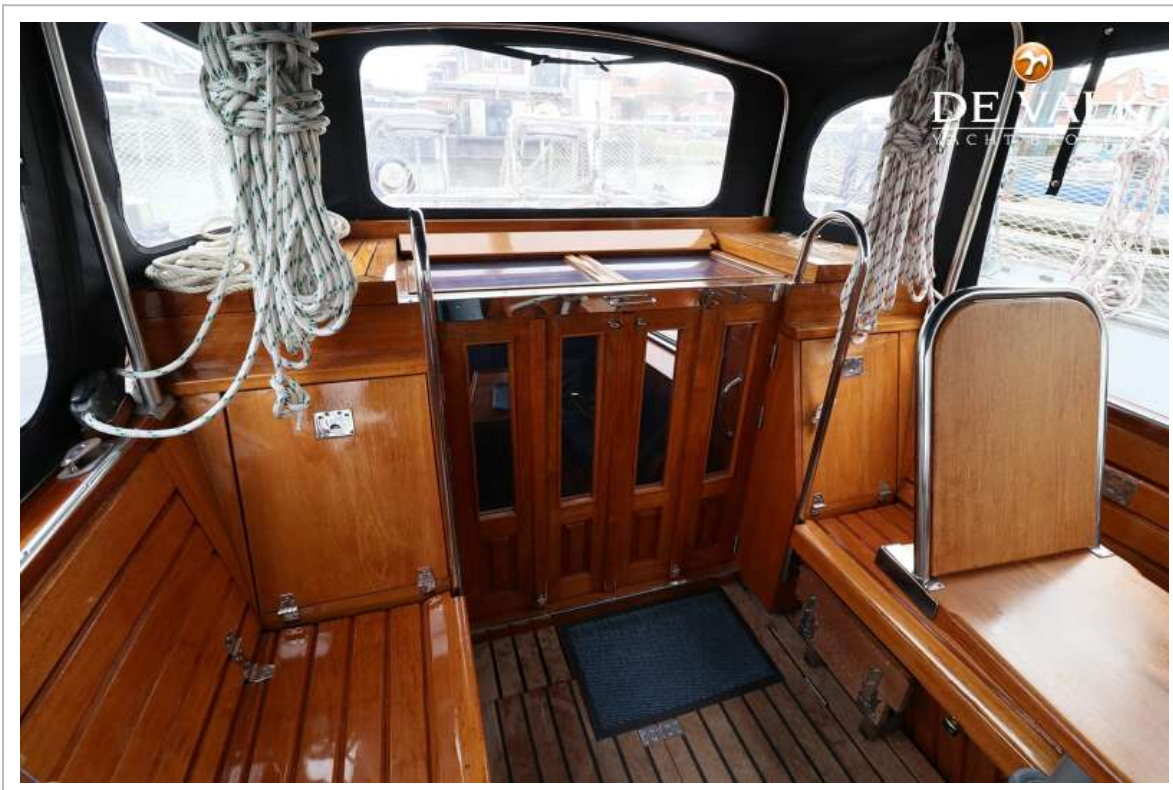
ONE OFF MOTORSAILER



ONE OFF MOTORSAILER



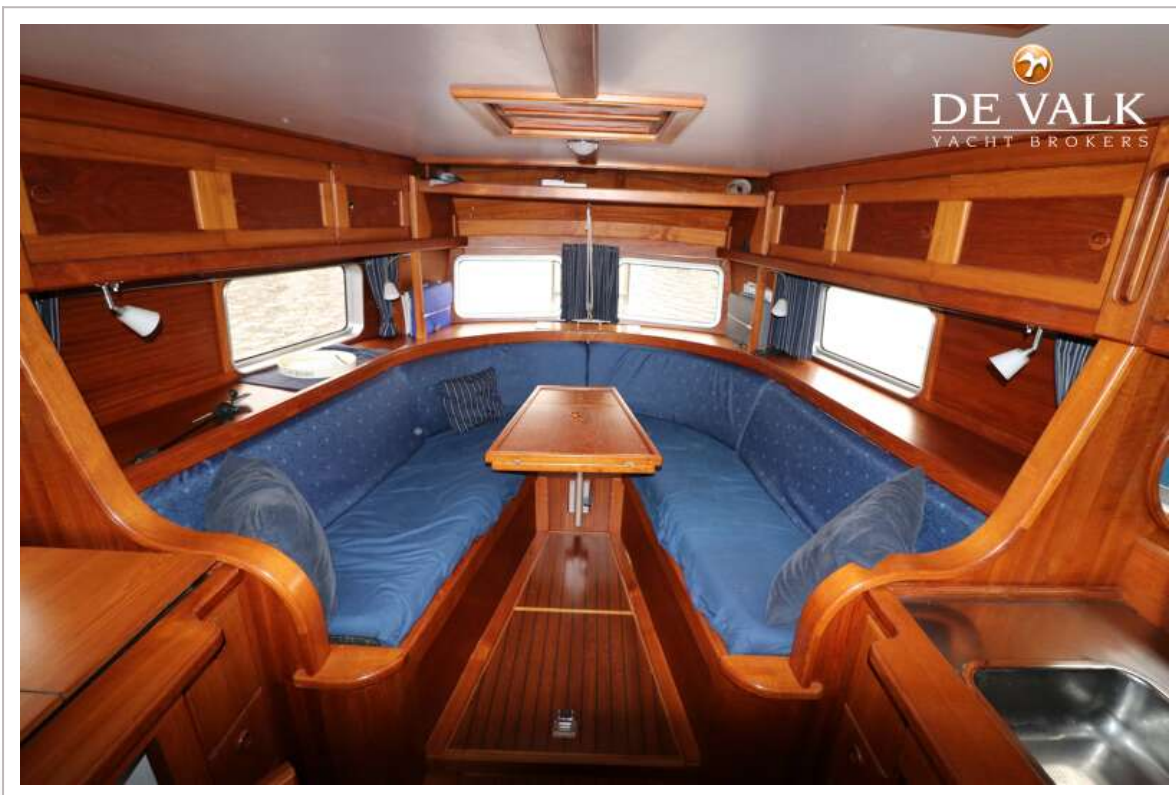
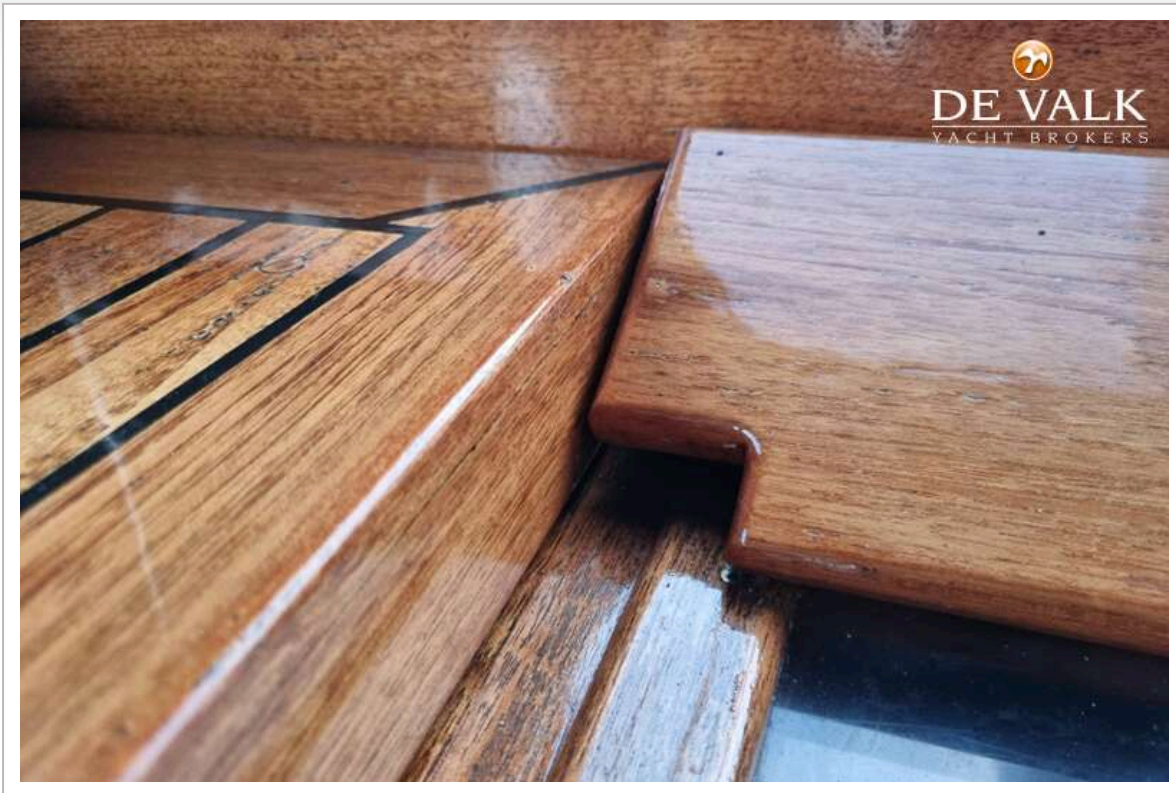
ONE OFF MOTORSAILER



ONE OFF MOTORSAILER



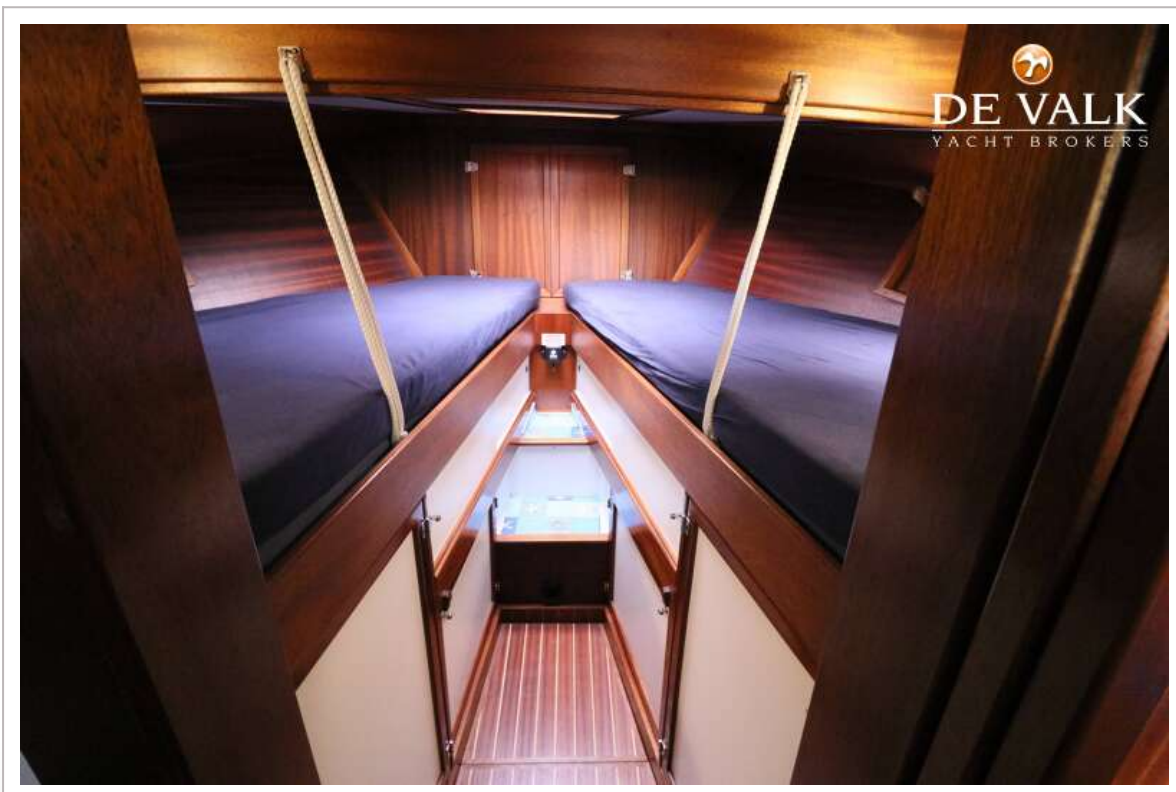
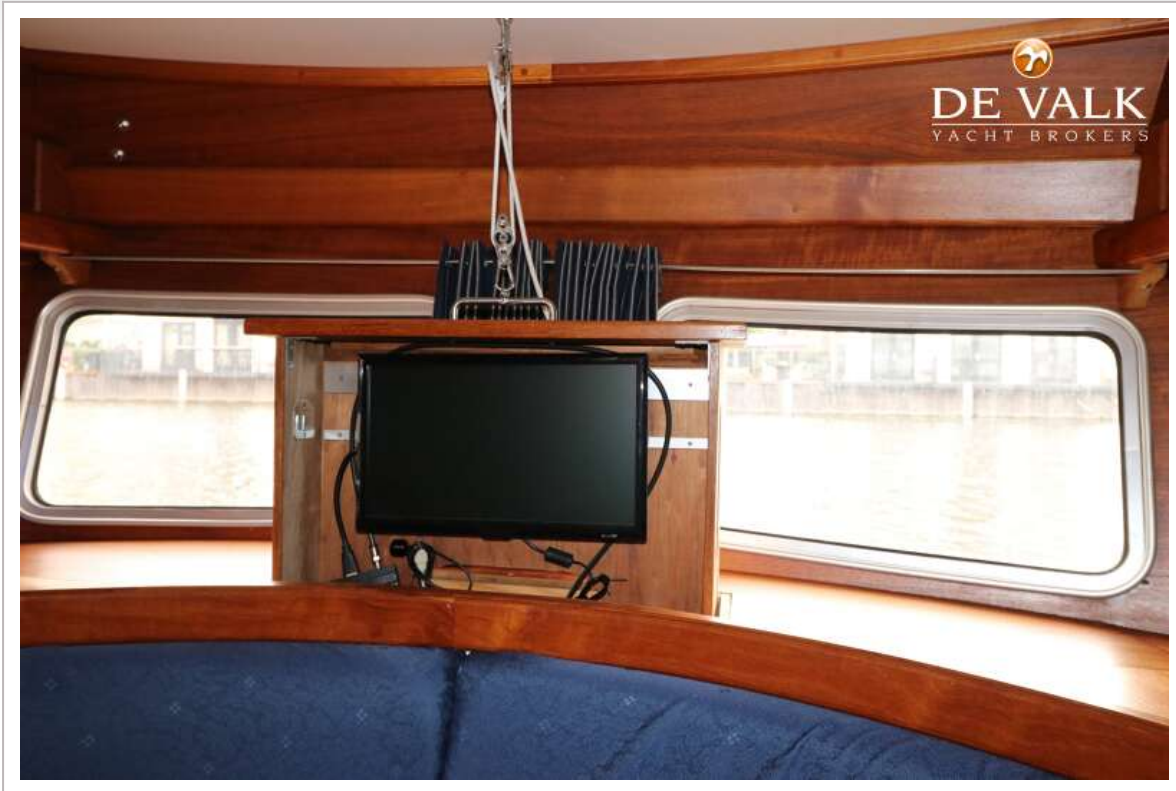
ONE OFF MOTORSAILER



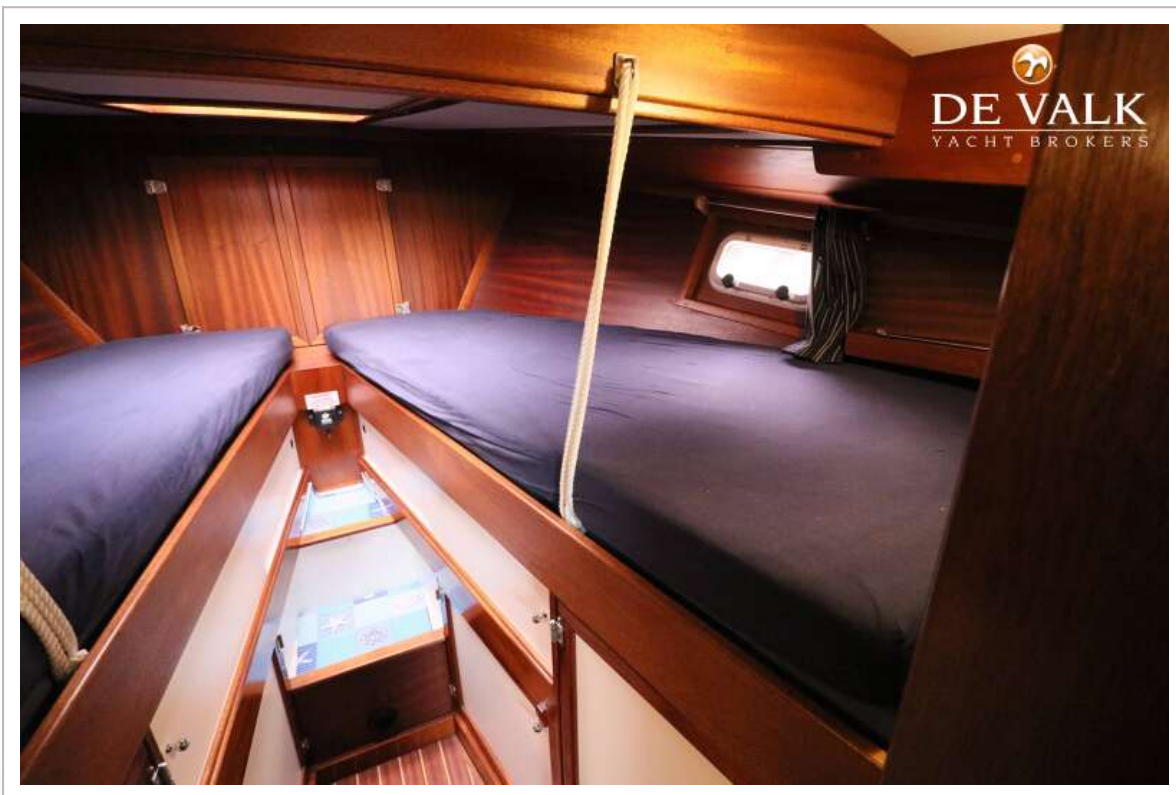
ONE OFF MOTORSAILER



ONE OFF MOTORSAILER



ONE OFF MOTORSAILER



ONE OFF MOTORSAILER



ONE OFF MOTORSAILER

