



SEALINE S330



SEALINE S330

BROKER'S COMMENTS

A beautiful Sealine S330 with year of construction 2016. This fast motorboat is equipped with two Volvo Penta engines of 220 hp each. The control system has been expanded with a bow thruster and joystick steering. With the joystick, docking has really become a piece of cake. The interior is beautifully finished. The two cabins are equipped with double beds. The spacious bathroom has a toilet and shower. In the cockpit is a nice grill with sink, so outdoor cooking is also possible. This ship is now available for viewing in Loosdrecht. Make an appointment soon!

Bas Lohmann

SPECIFICATIONS

| | | | |
|---------------------|-------------------------|----------------|------------------------------|
| Dimensions | 10.31 x 3.50 x 0.89 (m) | Builder | Sealine |
| Built | 2016 | Cabins | 2 |
| Material | GRP | Berths | 4 |
| Engine(s) | 2 x Volvo Penta diesel | Hp/Kw | 2 x 220.00 (hp), 161.92 (kw) |
| Asking price | € 219.500 (VAT Paid) | Lying | at sales office |

CONTACT

| | | | |
|---------------------|--|------------------|----------------------|
| Sales office | De Valk Loosdrecht B.V. | Telephone | +31 (0)35 582 90 30 |
| Address | 't Breukeleveense Meentje 6 1231LM Loosdrecht / Wijdmeren NL | E-mail | loosdrecht@devalk.nl |

DISCLAIMER

These particulars are given in good faith as supplied but cannot be guaranteed.



GENERAL

| | |
|------------------------------|-------------------|
| Model | SEALINE S330 |
| Type | motor yacht |
| LOA (m) | 10,31 |
| LWL (m) | 8,54 |
| Beam (m) | 3,50 |
| Draft (m) | 0,89 |
| Headroom (m) | 2,00 |
| Year built | 2016 |
| Builder | Sealine |
| Country | United Kingdom |
| Displacement (t) | 5,9 |
| CE norm | B |
| Hull material | GRP |
| Hull colour | white |
| Hull shape | V-shaped hull |
| Superstructure material | GRP |
| Rubbing strake | rubber |
| Deck material | GRP |
| Deck finish | synthetic teak |
| Superstructure deck finish | synthetic teak |
| Cockpit deck finish | synthetic teak |
| Window frame | polymer |
| Window material | tempered glass |
| Deckhatch | yes |
| Portholes | polymer |
| Radar arch | yes |
| Fuel tank (litre) | 570l |
| Level indicator (fuel tank) | Volvo Penta |
| Freshwater tank (litre) | polyethylene 202l |
| Level indicator (freshwater) | yes |



| | |
|-------------------------|------------------|
| Blackwater tank (litre) | polyethylene 85l |
| Outside helm position | hydraulic |

ACCOMMODATION

| | |
|--------------------------|-------------------------------------|
| Cabins | 2 |
| Berths | 4 |
| Interior | walnut |
| Floor | carpet |
| Deck saloon | yes |
| Saloon | yes |
| Headroom saloon (m) | 1,95 |
| Sliding roof | manual |
| Aft Cabin | yes |
| Dinette | yes |
| Sliding door to aft deck | yes |
| Galley | yes |
| Countertop | granite |
| Sink | stainless steel |
| Cooker | calor gas Two Pits |
| Fridge | 1x Isotherm in cockpit, 1x in salon |
| Freezer | In both fridges |
| Hot water system | 220V + engine |
| Water pressure system | electrical |
| Owners cabin | double bed |
| Bed length (m) | 2,00 |
| Wardrobe | hanging and shelves |
| Bathroom | separate |
| Toilet | separate Jabsco |
| Toilet system | electric |
| Wash basin | in the bathroom |
| Shower | separate |



| | |
|-----------------------|-----------------------------|
| Guest cabin 1 | double bed |
| Bed length (m) | 2,00 |
| Wardrobe | hanging and shelves |
| Wet bar | With grill and sink outside |

MACHINERY

| | |
|---------------------------------|---------------------------------|
| No of engines | 2 |
| Make | Volvo Penta |
| HP | 220 |
| kW | 161.92 |
| Fuel | diesel |
| Engine hours | 376 |
| Engine cooling system | freshwater heat exchanger |
| Drive | stern |
| Engine controls | electrical |
| Gearbox | mechanical |
| Bowthruster | electric Quick TCD 1022 |
| Exhaust | watercooled |
| Propeller type | yes |
| Electric bilge pump | yes |
| Batteries | yes |
| Start battery | 2x 95Ah |
| Service battery | 3x 160 Ah (2022) |
| Bowthruster battery | 1x 95 Ah |
| Battery monitor | Mastervolt |
| Battery charger | Mastervolt Chargemaster 12/35-3 |
| Inverter | yes |
| Battery charger/inverter | Mastervolt 12/1600-60 |
| Shorepower | with cable |
| Trimtabs | Lectrotab |
| Extra info | Joystick Piloting |



NAVIGATION

| | |
|------------------------|----------------------|
| Compass | Garmin Typ85 |
| Electric compass | Raymarine |
| Depth sounder/log | Raymarine |
| Log | Raymarine |
| VHF handheld | Raymarine Raymic260E |
| Autopilot | Raymarine |
| Rudder angle indicator | Volvo Penta |
| GPS | yes |
| Plotter/GPS | Raymarine E-serie |
| Electronis chart(s) | yes |
| Navigation lights | yes |
| Searchlight | Marinco |

EQUIPMENT

| | |
|------------------|---|
| Cockpit cover | Needs maintenance/ needs to be replaced |
| Cockpit cushions | yes |
| Cockpit table | yes |
| Cockpit chairs | yes |
| Bathing platform | yes |
| Transom door | yes |
| Deck shower | yes |
| Anchor | yes |
| Anchor chain | yes |
| Windlass | electrical Quick Dp3 prince series |
| Deck wash | yes |
| Sea railing | stainless steel |
| Wiper | yes |
| Clearview window | yes |
| Horn | electric |
| Fenders | yes |



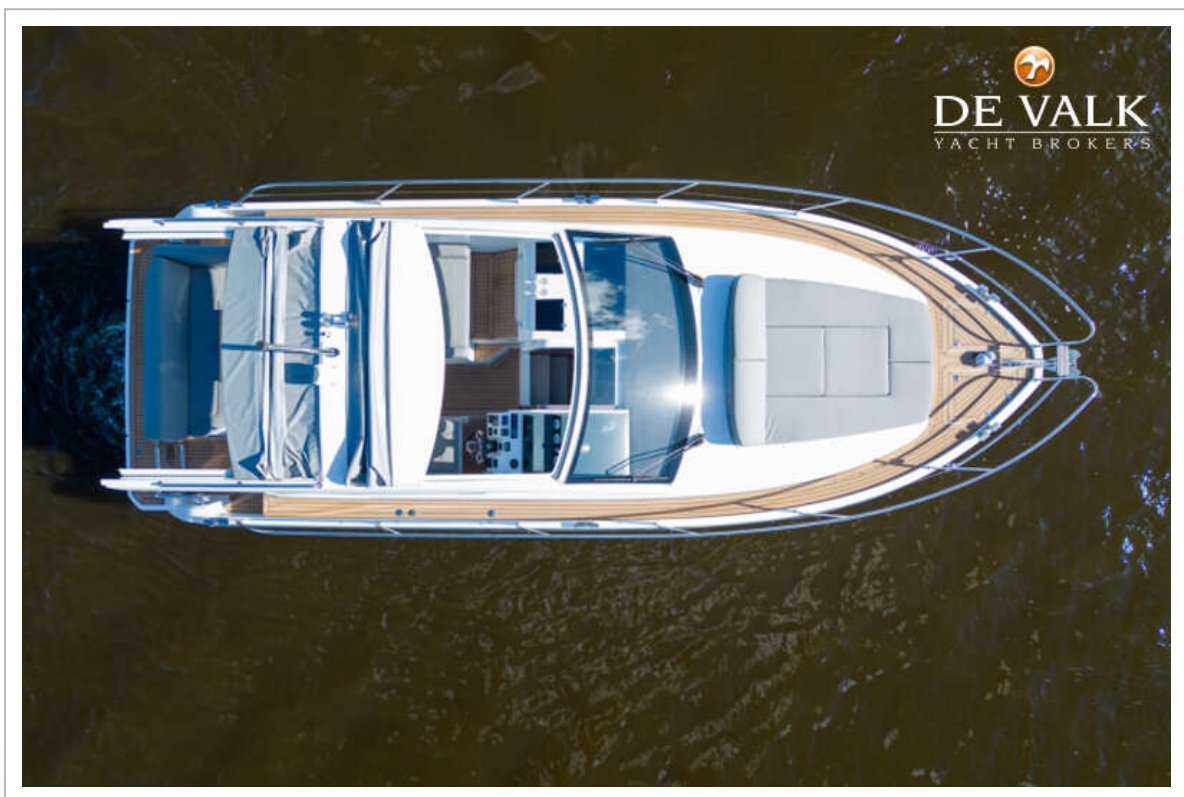
| | |
|-------------------|--------------------------------------|
| Mooring lines | yes |
| Radio | Fusion-NRx200i and a Fusion MS-AV750 |
| Cockpit speakers | yes |
| Speakers in salon | yes |



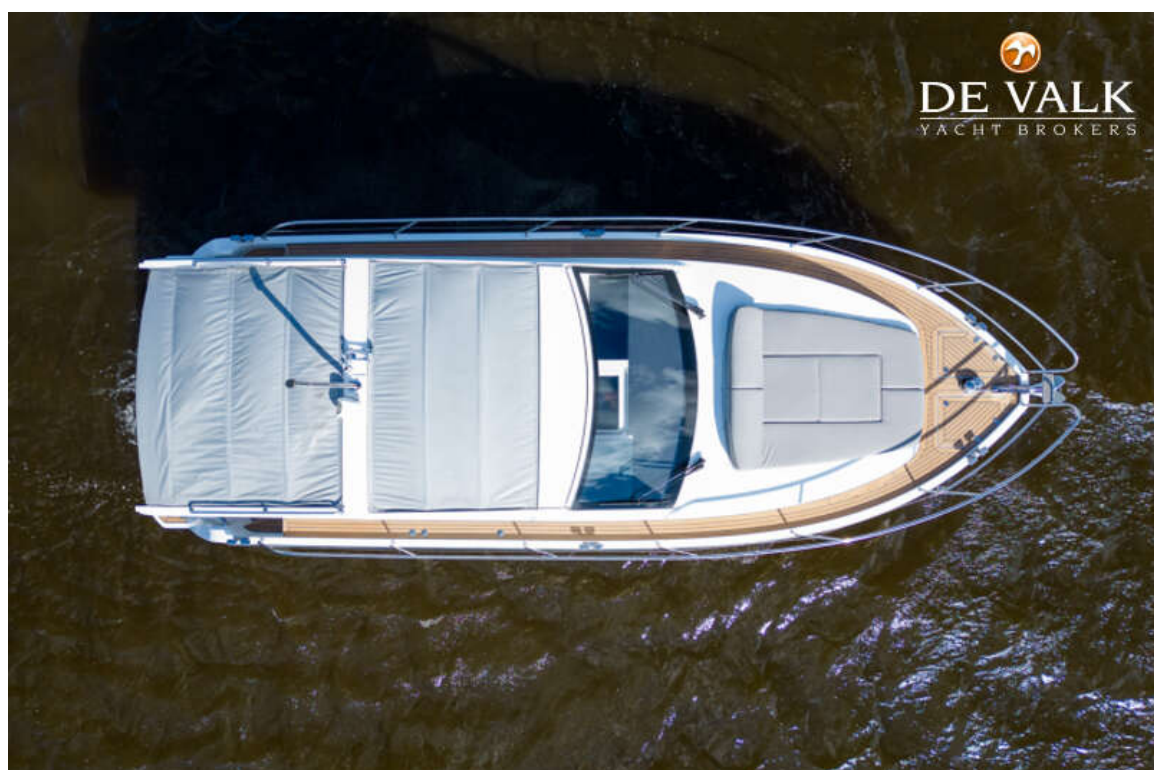
SEALINE S330



SEALINE S330



SEALINE S330



SEALINE S330



SEALINE S330



SEALINE S330



SEALINE S330



SEALINE S330



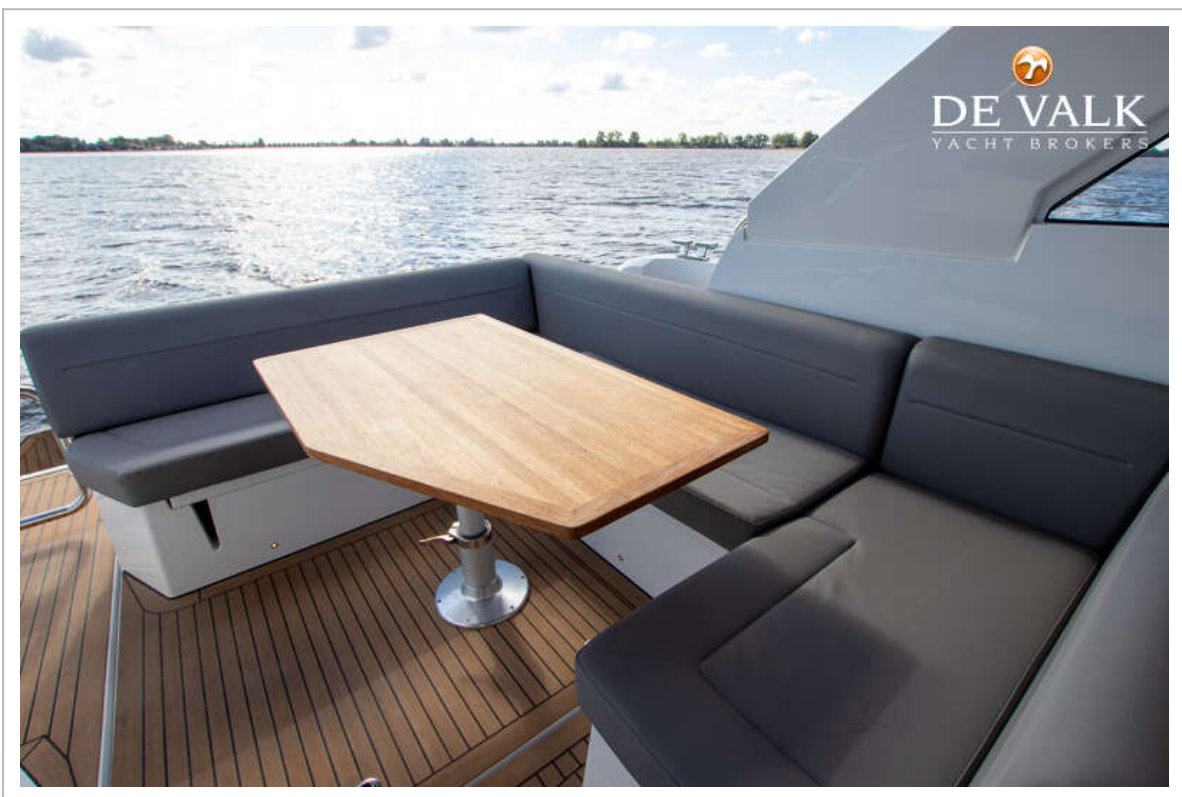
SEALINE S330



SEALINE S330



SEALINE S330



SEALINE S330



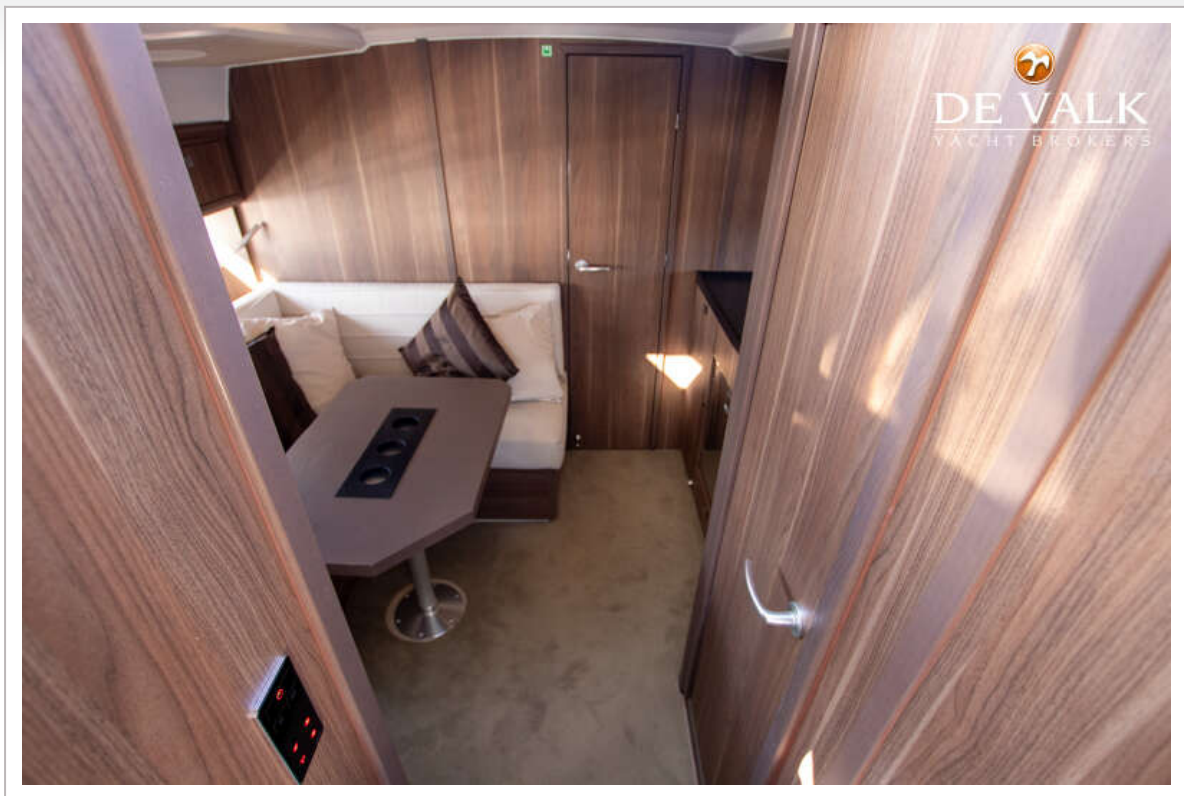
SEALINE S330



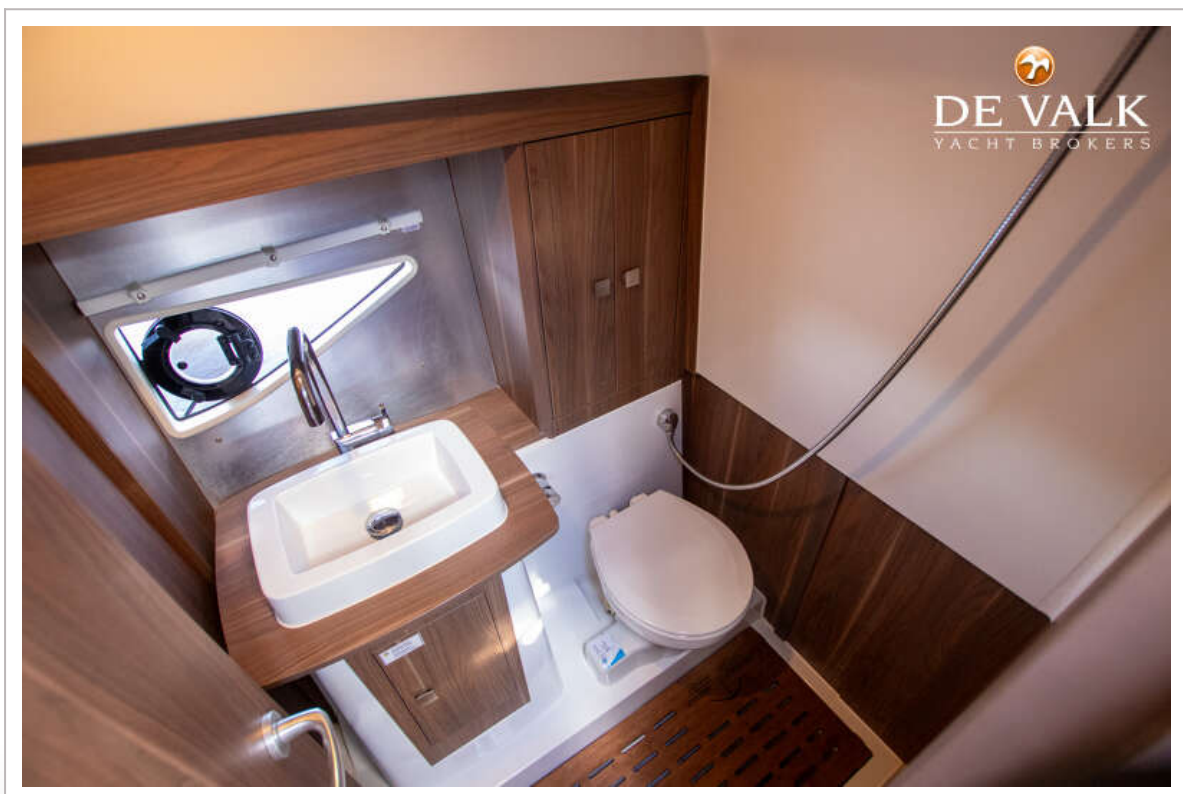
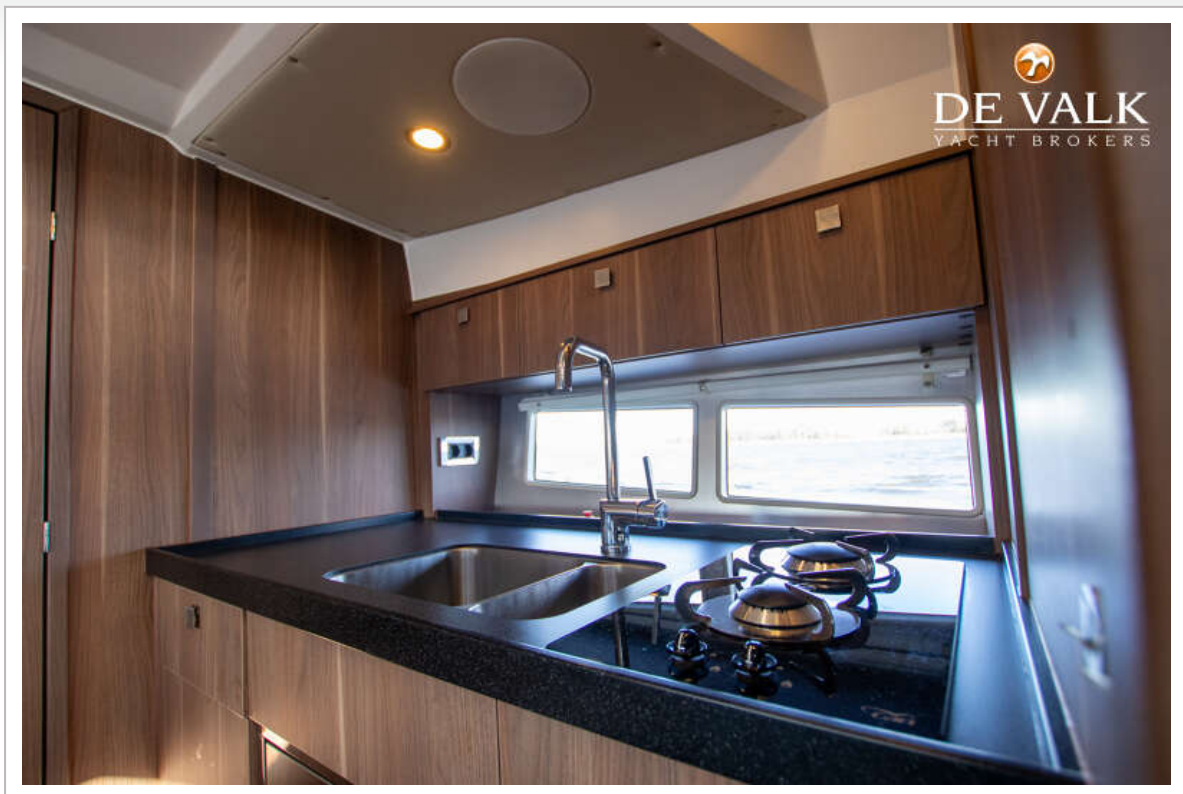
SEALINE S330



SEALINE S330



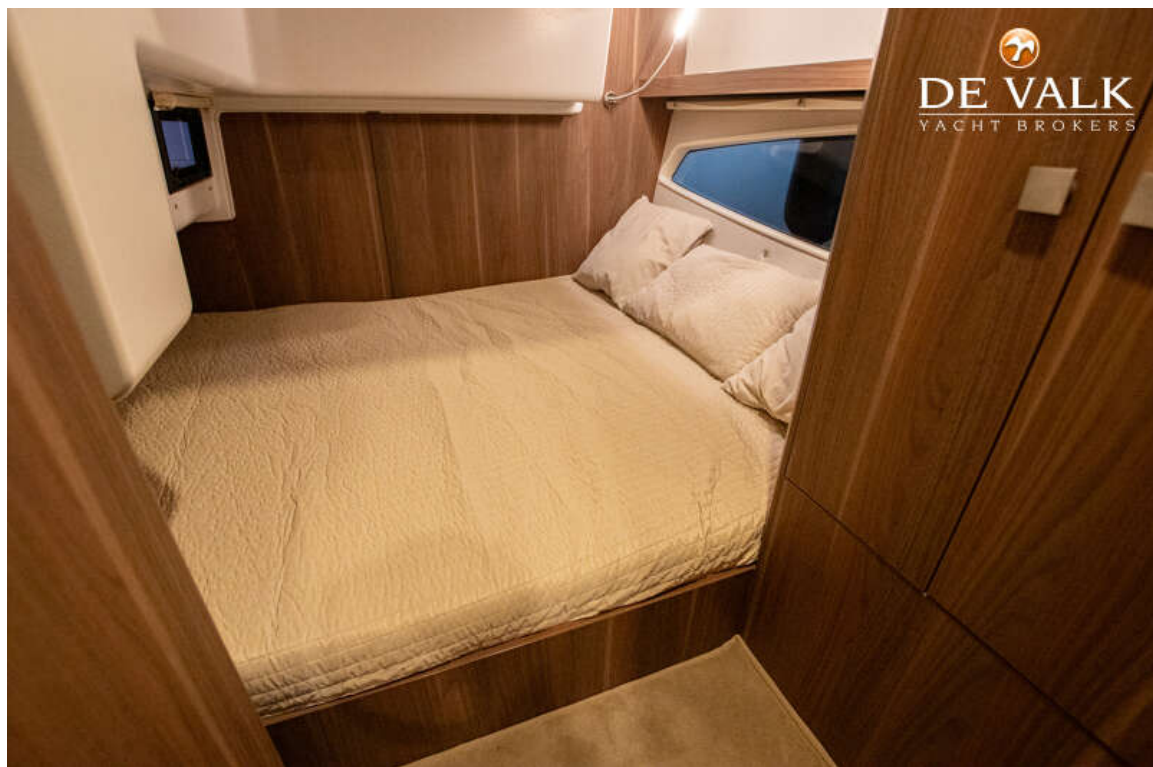
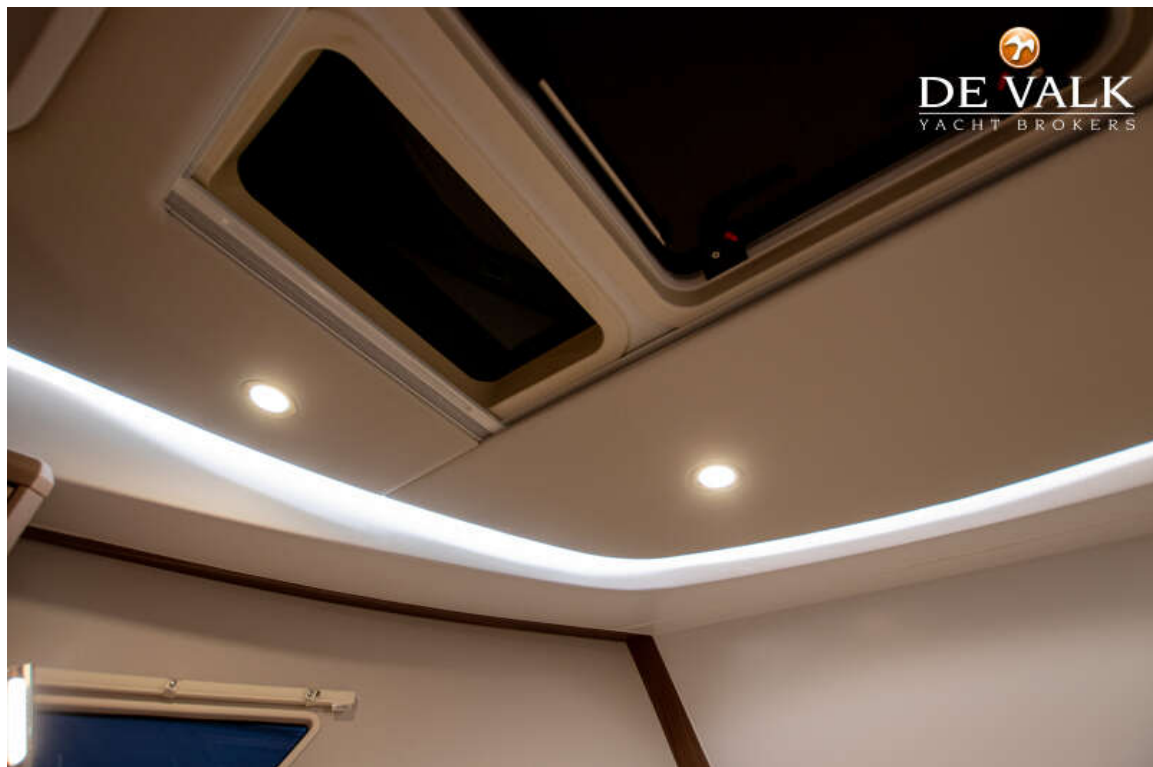
SEALINE S330



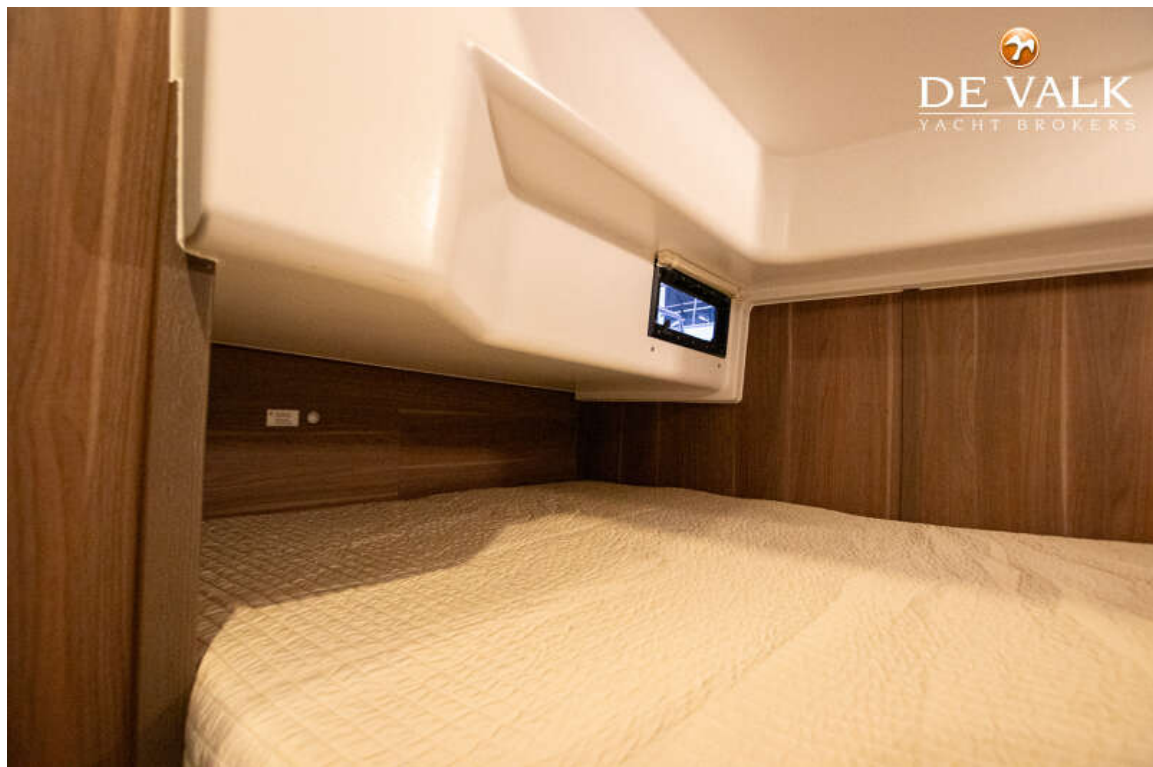
SEALINE S330



SEALINE S330



SEALINE S330



SEALINE S330

