



## CUSTOM STEEL KETCH



# CUSTOM STEEL KETCH

## BROKER'S COMMENTS

Meridian was designed and built in the Netherlands in 1962 for the Austrian Allgemeine Insurance. She received from 2015-17 a full overhaul incl. a new SS deck and teak. Well maintained and comfortable and the full hydraulic equipment are making her a single-handed cruiser with two engines. Interior and exterior in mint conditions and of high quality. Sailing under German flag. Ready to go and a must see. Available in South Spain.

*Jörg Hellmich*

## SPECIFICATIONS

<b>Dimensions</b>	19.13 x 4.60 x 2.40 (m)	<b>Builder</b>	Gebr. De Goot
<b>Built</b>	1962	<b>Cabins</b>	3
<b>Material</b>	Steel	<b>Berths</b>	6
<b>Engine(s)</b>	2 x Perkins M92 diesel	<b>Hp/Kw</b>	2 x 90.00 (hp), 66.24 (kw)
<b>Asking price</b>	€ 490.000 (VAT Paid)	<b>Lying</b>	contact Almeria

## CONTACT

<b>Sales office</b>	De Valk Almeria	<b>Telephone</b>	+34 950 497 825
<b>Address</b>	Puerto de Almerimar Darsena de la Batea Almerimar ES	<b>E-mail</b>	almeria@devalk.nl

## DISCLAIMER

These particulars are given in good faith as supplied but cannot be guaranteed.



# CUSTOM STEEL KETCH

## GENERAL

Model	CUSTOM STEEL KETCH
Type	sailing yacht
LOA (m)	19,13
LWL (m)	17,50
Beam (m)	4,60
Draft (m)	2,40
Air draft (m)	22,50
Headroom (m)	2,00
Year built	1962
Launched	1963
Builder	Gebr. De Goot
Country	The Netherlands
Designer	Southampton Yacht- Kontor
Displacement (t)	48
Ballast (tonnes)	lead in steel 11
CE norm	NA
Hull material	steel
Hull colour	blue
Hull thickness (mm)	6 - 5 (below & above waterline), keel: 25 mm
Hull shape	V-shaped hull
Keel type	long keel
Superstructure material	steel
Superstructure (mm)	6 - 10
Deck plate thickness (mm)	4
Rubbing strake	stainless steel
Deck material	stainless steel V4A (new deck 2015-2017)
Deck finish	teak 25 mm (2017)
Superstructure deck finish	paint
Cockpit deck finish	teak 25 mm (2017)
Antifouling (year)	2025



# CUSTOM STEEL KETCH

Dorades	yes
Window frame	aluminium
Window material	tempered glass
Deckhatch	Lewmar + traditional brass
Portholes	brass
Insulation	airfoil
Fuel tank (litre)	steel 1200
Fuel tank 2 (litre)	steel 800
Level indicator (fuel tank)	Gauge
Freshwater tank (litre)	steel 2000 (in 2 tanks)
Blackwater tank (litre)	steel 250 (stern) & 100 (midship)
Blackwater tank extraction	pump Brass pump
Greywater tank (litre)	steel 250
Wheel steering	hydraulic
Emergency tiller	yes
More info on hull	In pristine conditions
More info on paintwork	Epoxy & Awlgrip, in excellent conditions (2009)
Extra info	New SS deck 2015-2017 during yacht overhaul

## ACCOMMODATION

Cabins	3
Berths	6
Interior	teak
Layout	3 cabin version
Floor	teak
Aft deck	yes
Deck saloon	yes
Headroom saloon (m)	2,00
Heating	central hot water With radiators
Air-conditioning	Mobile 220V unit
Chart table	yes



# CUSTOM STEEL KETCH

Aft Cabin	yes
Dinette	yes
Opening door to cockpit	yes
Galley	U-shape
Countertop	wood
Sink	stainless steel Double
Cooker	calor gas Force 10
Oven	Force 10
Microwave/oven combi	Panasonic
Fridge	Isotherm (stainless steel)
Freezer	Isotherm
Hot water system	220V + engine Boiler
Water pressure system	electrical
Manual and/or foot pump	Electric
Kettle	yes
Hot water tap	yes
Coffee maker	yes
Crockery	yes
Owners cabin	double bed Aft
Bed length (m)	2,00
Wardrobe	hanging/drawers/shelves
Toilet	en suite
Toilet system	electric
Wash basin	at the toilet
Shower	en suite Seperate
Guest cabin 1	v-bed Forward
Bed length (m)	2,00
Wardrobe	hanging and shelves
Toilet	shared
Toilet system	electric
Wash basin	at the toilet
Shower	shared



# CUSTOM STEEL KETCH

Guest cabin 2	twin single Midship
Bed length (m)	2,00
Wardrobe	hanging and shelves

## MACHINERY

No of engines	2
Make	Perkins
Type	M92
HP	90
kW	66.24
Fuel	diesel
Year installed	2000
Year of overhaul	2016 (complete)
Maximum speed (kn)	10
Cruising speed (kn)	7
Consumption (l/hr)	7
Range (nm)	2200
Engine hours	1150
Engine cooling system	freshwater heat exchanger
Drive	shaft
Shaft seal	Provi Seal
Engine controls	bowden cable Qwic
Gearbox	hydraulic Paragon
Exhaust	watercooled
Propeller type	folding Sail Prop
Propeller blades	3
Propeller shaft material	stainless steel
Shaft lubrication	water
Electric bilge pump	Several pumps
Electrical installation	New wiring 2016 (12/24V)
Generator	wet exhaust Wispher Kobota 20 kW (2018)



Running hours generator	200
Start battery	2 x 12V / 110 Amp Acid
Service battery	12 x 2V / 1000 Amp Gel total (2016)
Generator battery	12V / 100 Amp
Battery monitor	Victron
Battery charger	2 x Victron Energy Skylla 100 Amp
Inverter	Victron Multiplus 24/3000W / 70 Amp
Battery charger/inverter	Victron Multiplus 1000W
Shorepower	with cable 230V
Extra info	Engine hrs since overhaul

## NAVIGATION

Electric compass	Raymarine
Multi control display	Raymarine i70
Depth sounder/log	Raymarine i70
Forw. looking depth sounder	Raymarine i70
Windset	Raymarine i70
Repeater	Raymarine
Fish finder	yes
VHF	Raymarine Ray 53E
VHF handheld	yes
Autopilot	Raymarine p70 (2 independent hydraulic systems)
Rudder angle indicator	Raymarine p70
Radar/GPS/plotter	Raymarine Hybridtouch
Wifi antenna	yes
Electronic chart(s)	Navionics
AIS transceiver	Raymarine Hybridtouch
Transmitter	Icom IC-M710
EPIRB	yes
Personal MOB transmitter	yes
Navigation lights	yes



# CUSTOM STEEL KETCH

Searchlight	yes
Extra info	All instruments new in 2018

## EQUIPMENT

Sprayhood	yes
Sun awning	yes
Winter cover	yes
Cockpit cushions	yes
Cockpit table	Teak
Cockpit chairs	yes
Boarding ladder	stainless steel
Gangway	Aluminum
Deck shower	H&c
Anchor	Navy (SS)
Anchor chain	Inox 140m
Anchor 2	Navy (SS)
Anchor chain	Inox 140 m
Windlass	electrical Muir Thor
Dinghy	rigid hull AB
Outboard	Mercury 4 stroke
Outboard support	yes
Deck crane	hydraulic 1 Ton capacity
Sea railing	wire
Grab rail (superstructure)	teak
Railing side opening gates	yes
Pushpit	yes
Pulpit	yes
Life raft	valise (or bag)
Life raft (pers)	4
Last life raft survey	Next service is due
Lifejackets	yes





# CUSTOM STEEL KETCH

Lifebuoy	yes
Horn	electric
Binocular	yes
Fenders	yes
Mooring lines	yes
Spare parts	Ample
Tools	Ample
Alarm system	yes
TV	yes
TV receiver	yes
Radio-cd player	Sony
DVD player	Sony
Speakers in salon	yes
Fire extinguisher	yes

## RIGGING

Rigging	ketch-cutter
Standing rigging	wire New 2015 (19mm)
Brand mast	Seldén New 2015
Material mast	aluminium
Spreaders	2 sets
Mainsail	Dracon 55m <sup>2</sup> (2017)
Stoway mast	Hydraulic
Mizzen	Stoway 26m <sup>2</sup> (2017)
Jib	Dracon 80m <sup>2</sup> (2017)
Genoa	Dracon 120m <sup>2</sup> (2017)
Genoa furler	Bumar Hydraulic
Cutter furler	Bumar Hydraulic
Reefing System	main in-mast furling Hydraulic (MSM Power winch)
Boomvang	mechanical and tackle Selden
Primary sheet winch	Andersen 66 ST 2 SP hydraulic (3 tons capacity)



# CUSTOM STEEL KETCH

Secondary sheet winch	Lewmar 56 ST 2 SP
Genoa sheetwinches	Andersen
Halyard winches	Lewmar 46 ST 2 SP & France 14 SII (Mizzen)
Reefing winch	yes
Spi-pole	aluminium
Extra info	Mast winches electric & manual
Extra info	Running rigging in very good conditions



# CUSTOM STEEL KETCH

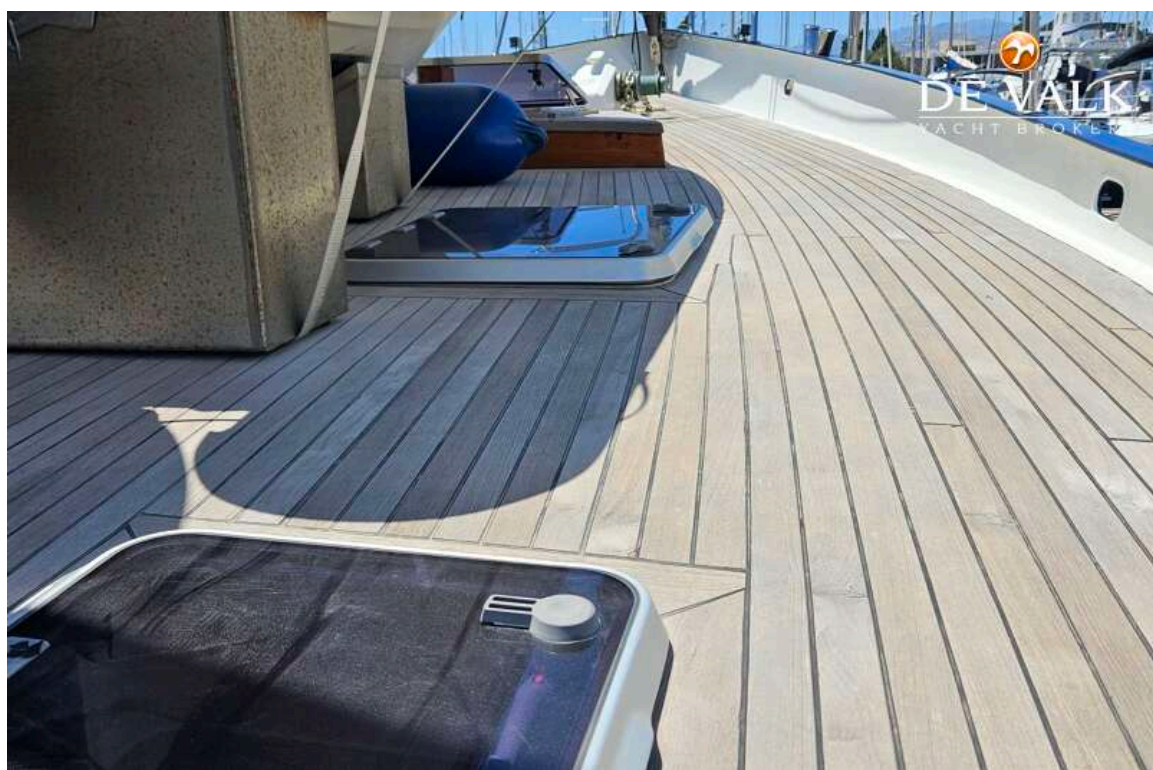
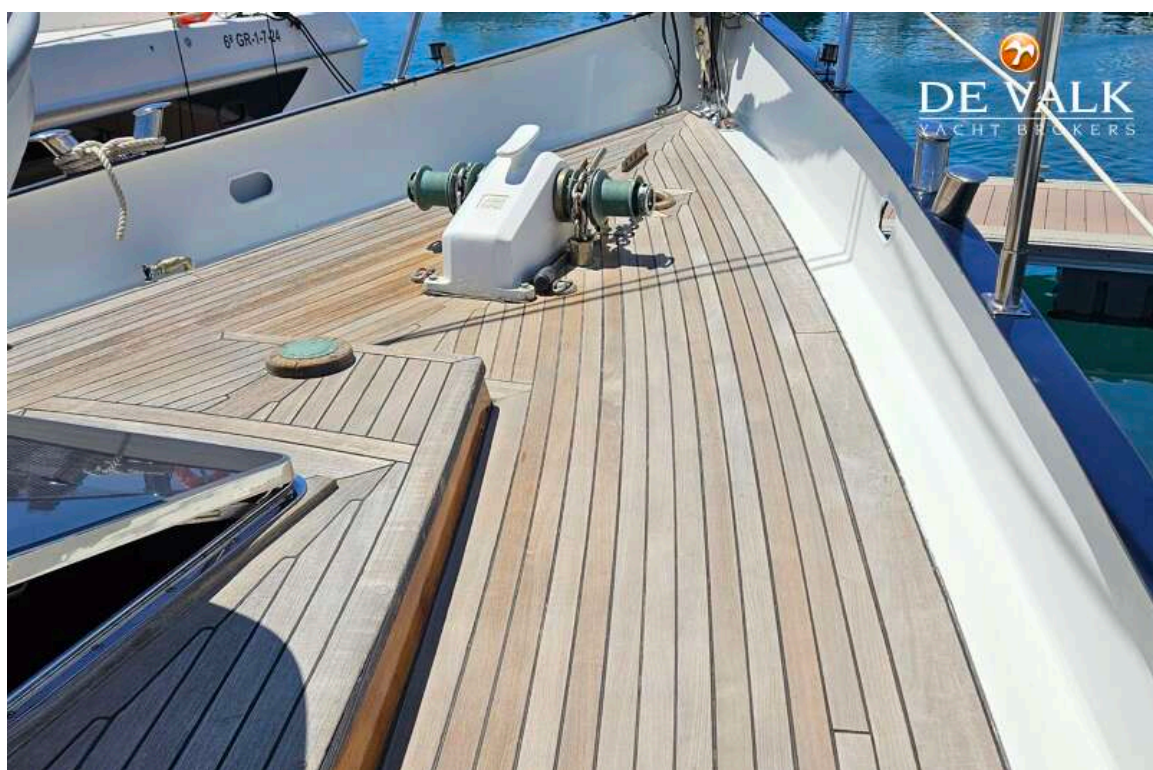


# CUSTOM STEEL KETCH





## CUSTOM STEEL KETCH



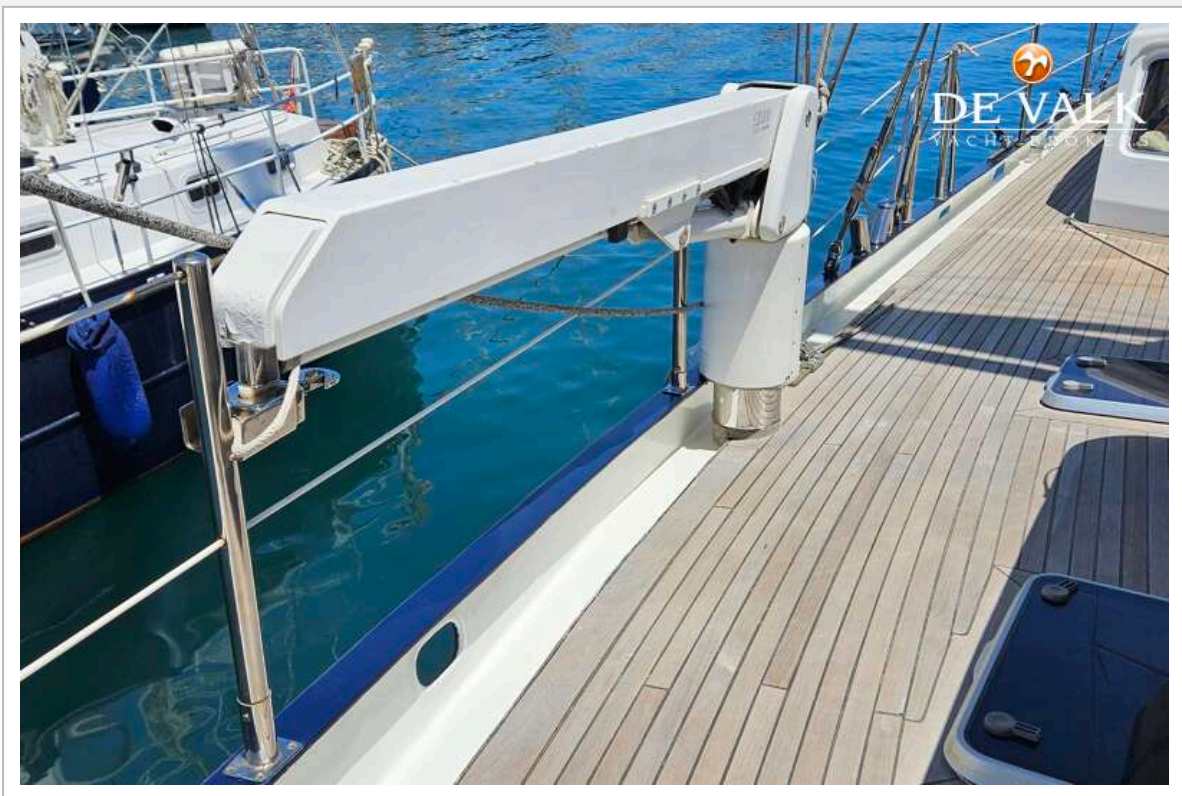


## CUSTOM STEEL KETCH



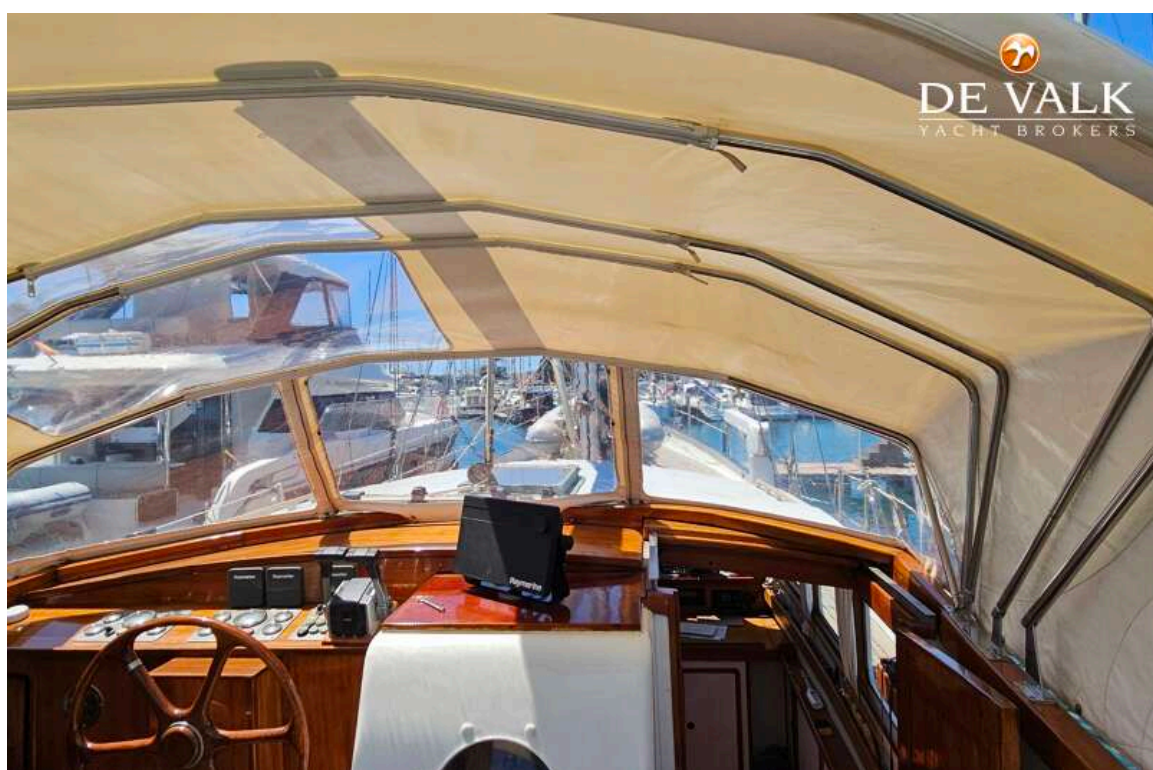


# CUSTOM STEEL KETCH





# CUSTOM STEEL KETCH





# CUSTOM STEEL KETCH



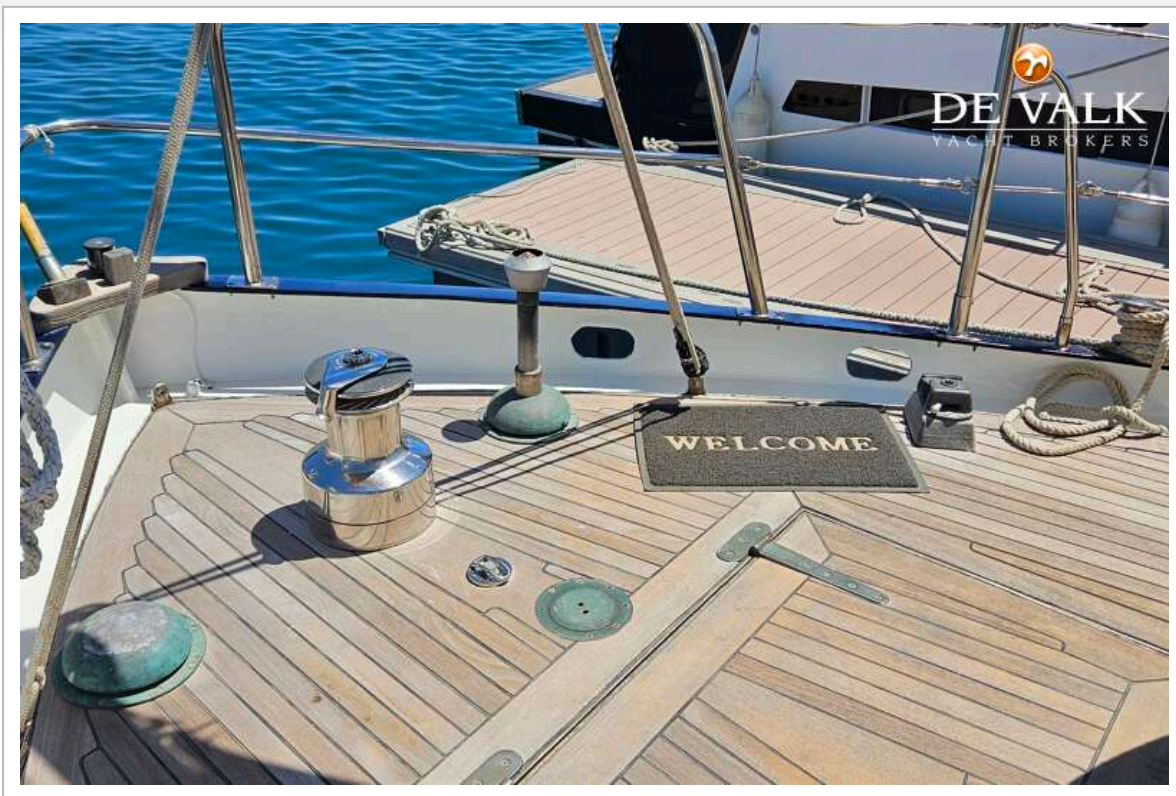


## CUSTOM STEEL KETCH



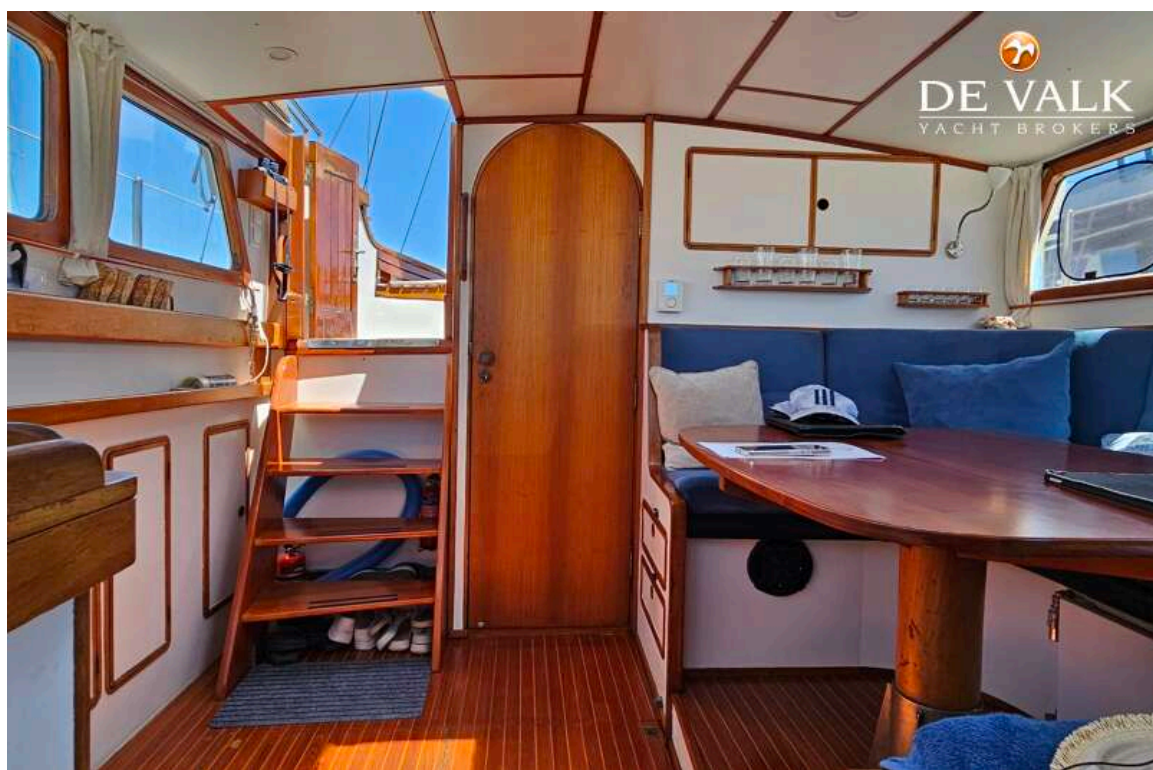


# CUSTOM STEEL KETCH





# CUSTOM STEEL KETCH





## CUSTOM STEEL KETCH

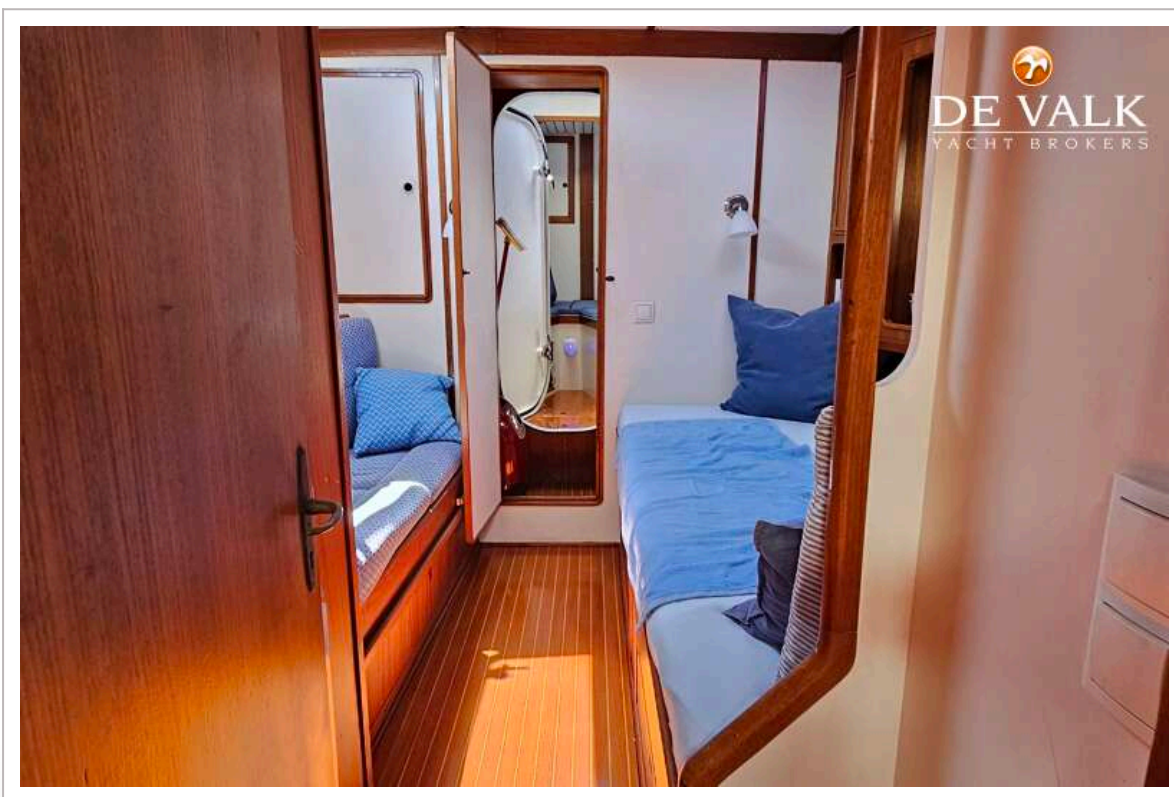


## CUSTOM STEEL KETCH

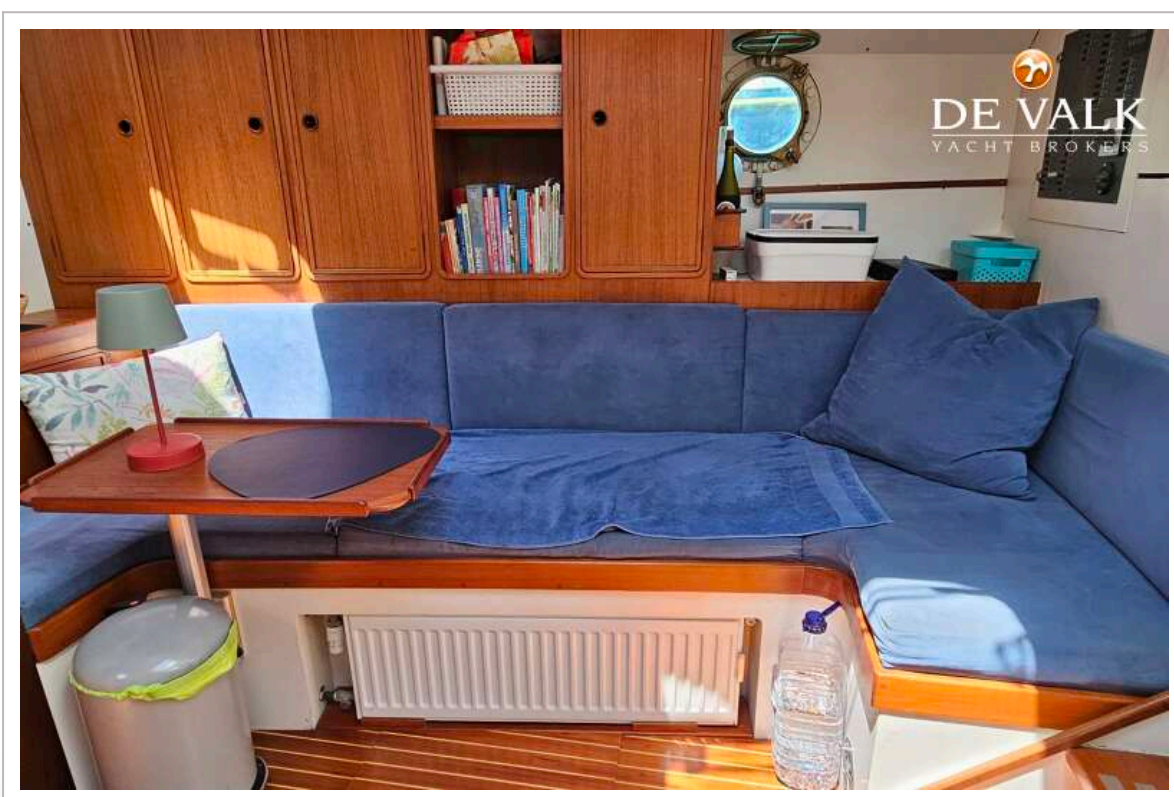
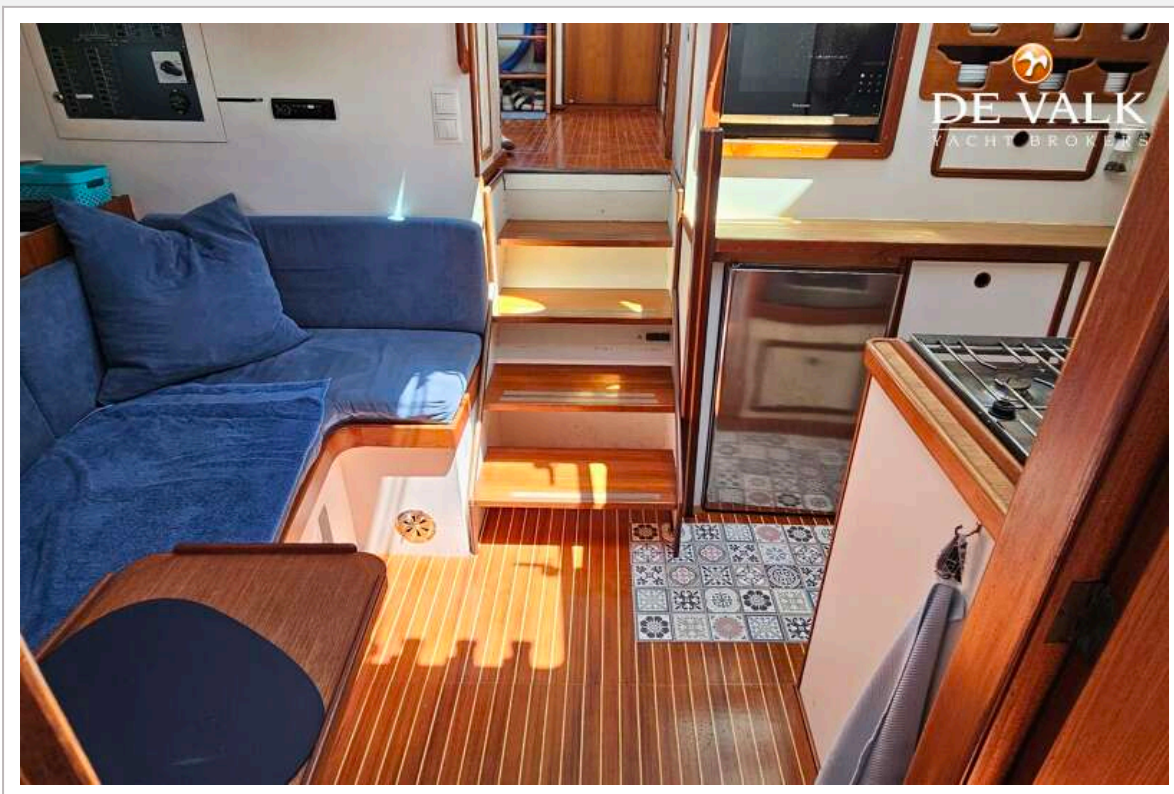




## CUSTOM STEEL KETCH

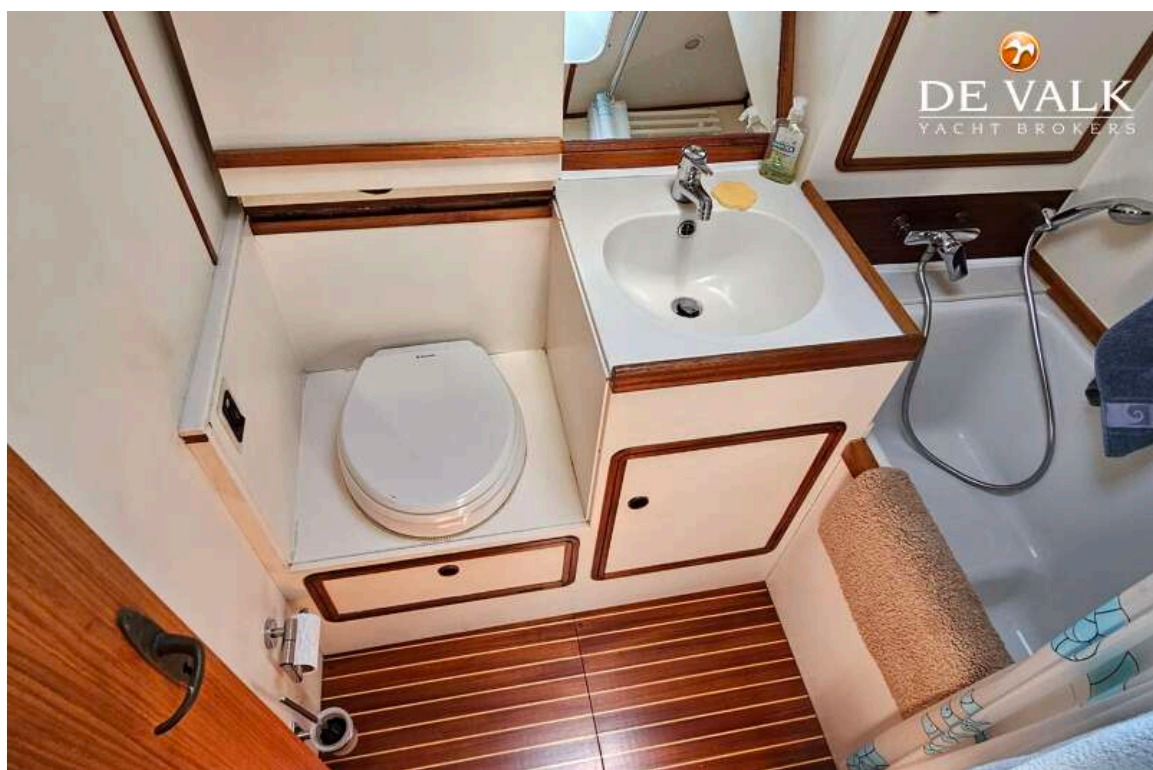


## CUSTOM STEEL KETCH

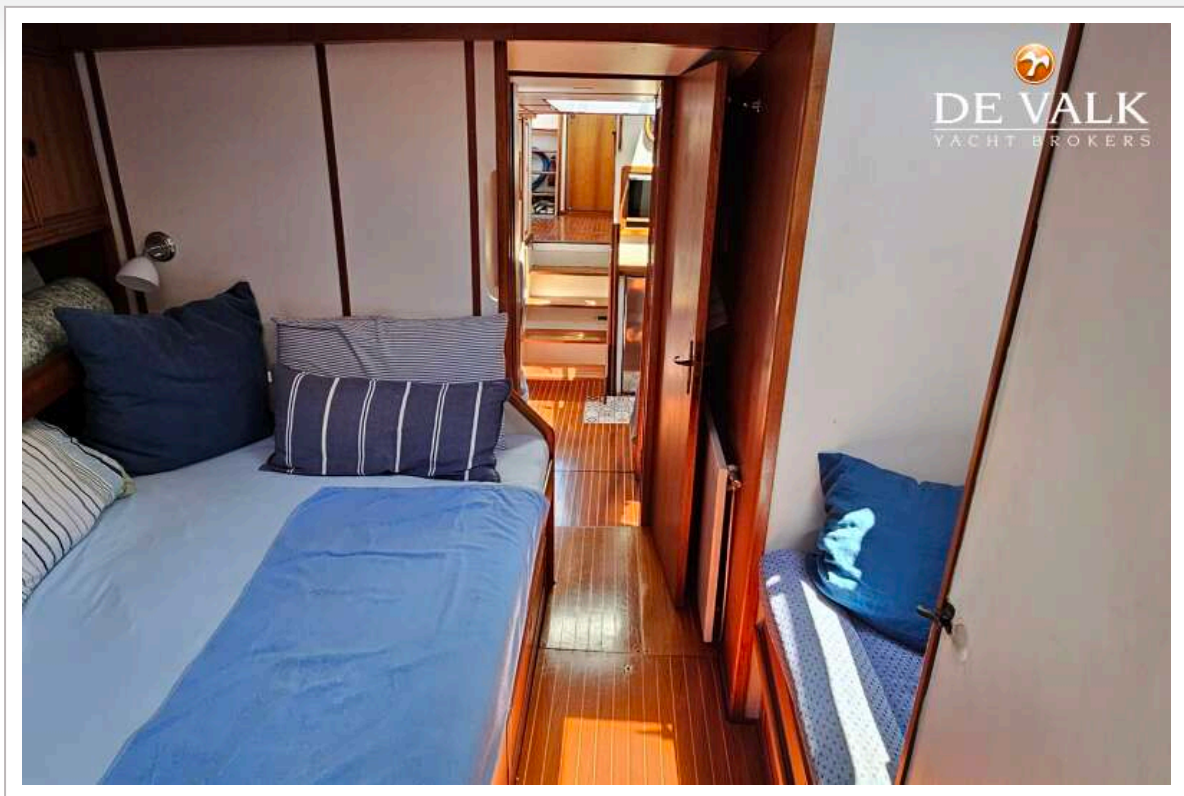




## CUSTOM STEEL KETCH

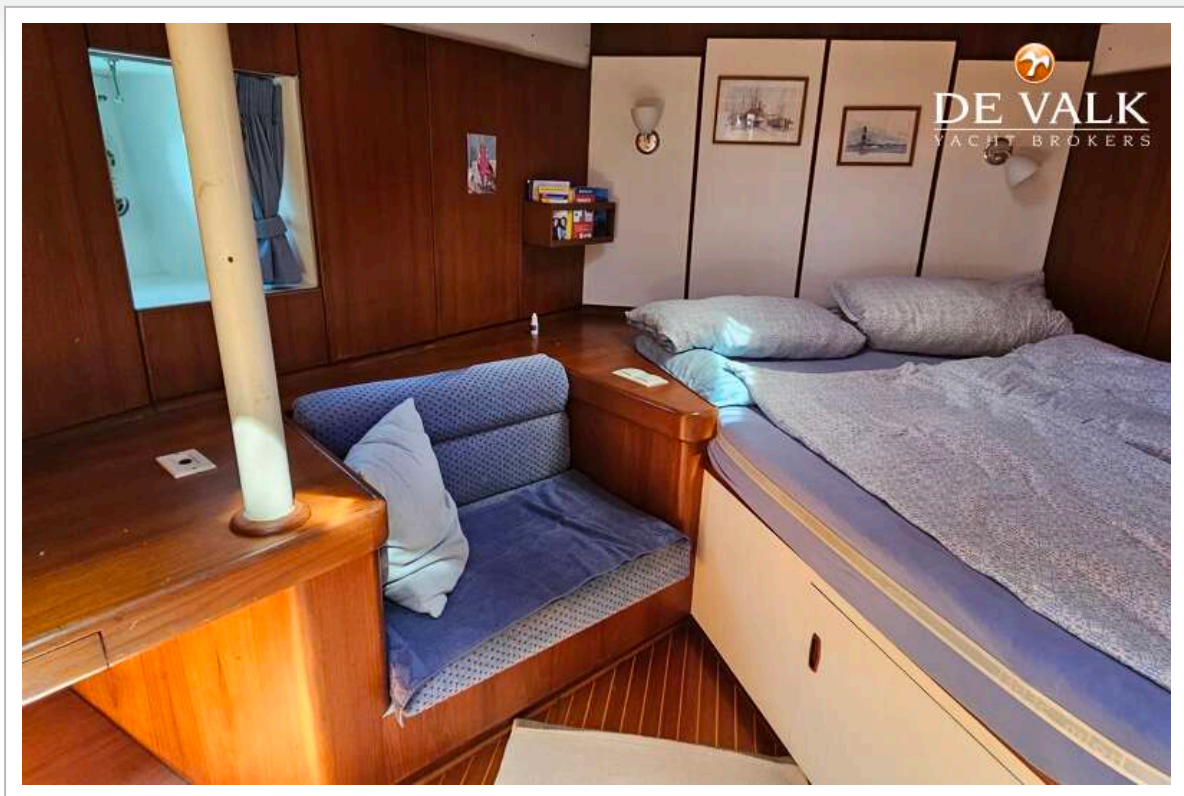


## CUSTOM STEEL KETCH



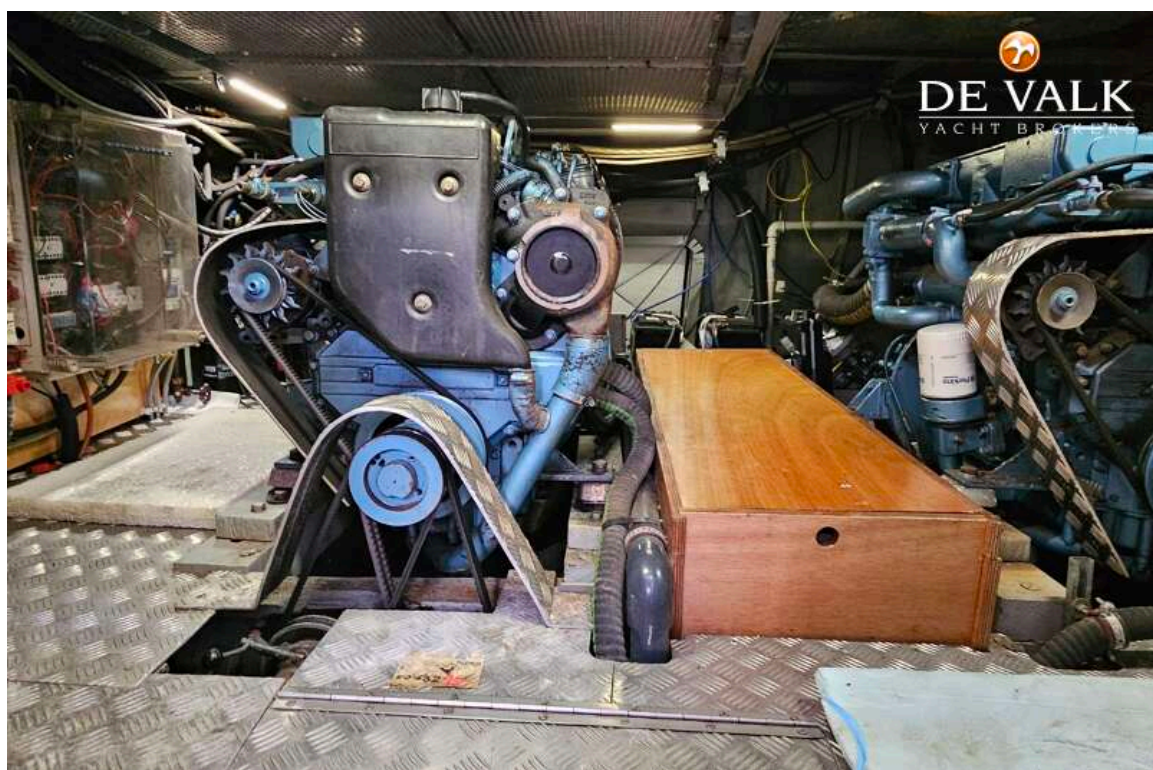
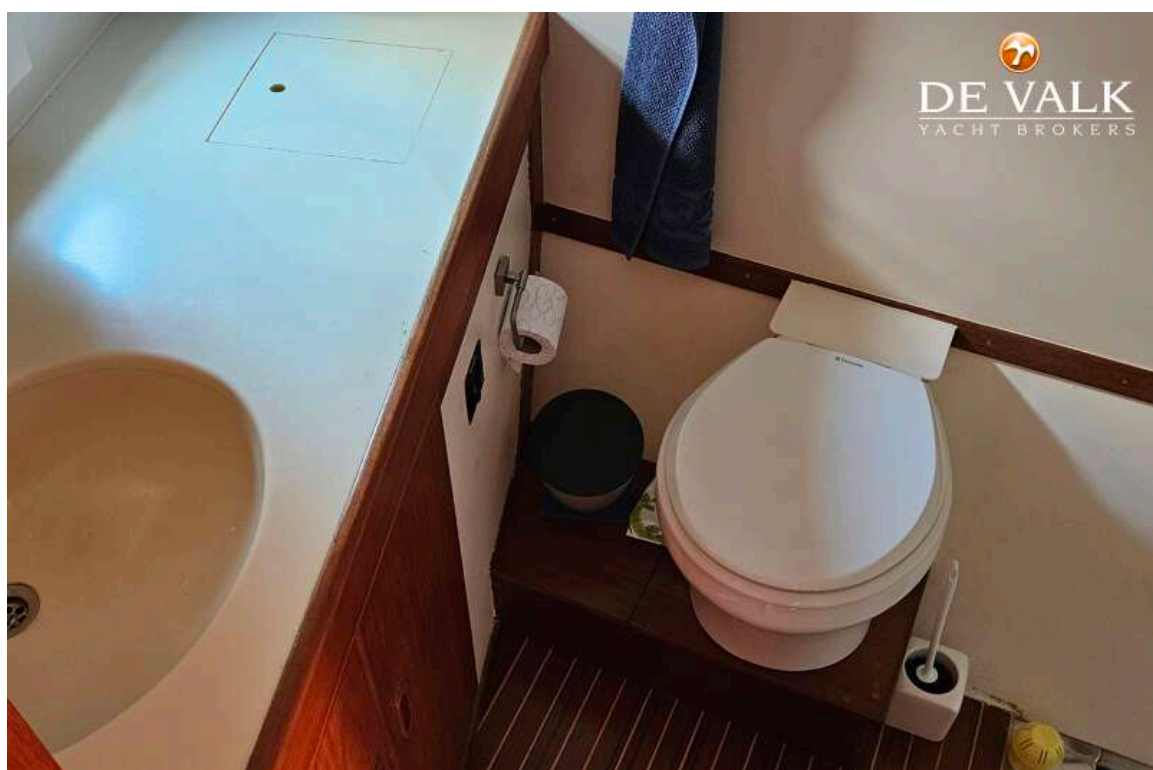


## CUSTOM STEEL KETCH





## CUSTOM STEEL KETCH



## CUSTOM STEEL KETCH

