



RORQUAL NS 44 KETCH



# RORQUAL NS 44 KETCH

## BROKER'S COMMENTS

The RORQUAL NS 44 was presented as one of the best "ocean cruising" sailboat in the 1970s and 1980s. It is a seaworthy, fast, solid boat. Its lines are balanced and its center of hull very low. The NS 44 was designed by the naval architect Auzépy Brenner to sail on the high seas for experienced owners wishing to sail the transatlantic and built by the Nautic Saintonge shipyard in Les Sables d'Olonnes. The present owner prepared her to be ready to sail.

*Jörg Hellmich*

## SPECIFICATIONS

<b>Dimensions</b>	13.35 x 4.08 x 1.90 (m)	<b>Builder</b>	Nautic Saintonge
<b>Built</b>	1977	<b>Cabins</b>	2
<b>Material</b>	GRP	<b>Berths</b>	6
<b>Engine(s)</b>	1 x Volvo Penta MD22L diesel	<b>Hp/Kw</b>	50.00 (hp), 36.75 (kw)
<b>Asking price</b>	€ 55.000 (VAT Exempt)	<b>Lying</b>	at sales office

## CONTACT

<b>Sales office</b>	De Valk Almeria	<b>Telephone</b>	+34 950 497 825
<b>Address</b>	Puerto de Almerimar Darsena de la Batea Almerimar ES	<b>E-mail</b>	almeria@devalk.nl

## DISCLAIMER

These particulars are given in good faith as supplied but cannot be guaranteed.



# RORQUAL NS 44 KETCH

## GENERAL

Model	RORQUAL NS 44 KETCH
Type	sailing yacht
LOA (m)	13,35
LWL (m)	9,90
Beam (m)	4,08
Draft (m)	1,90
Air draft (m)	17,00
Headroom (m)	1,90
Year built	1977
Builder	Nautic Saintonge
Country	France
Designer	Georges Auzépy-Brenneu
Displacement (t)	9
Ballast (tonnes)	cast iron and lead 3,5
Net tonnage	9,5
CE norm	NA
Hull material	GRP
Hull colour	red
Hull shape	V-shaped hull
Keel type	fin keel
Superstructure material	GRP
Deck material	GRP
Deck finish	non-skid paint
Superstructure deck finish	non-skid paint
Cockpit deck finish	non-skid paint
Antifouling (year)	2025
Window frame	aluminium
Window material	polycarbonate
Deckhatch	yes
Fuel tank (litre)	stainless steel 260 (in 2 tanks)



# RORQUAL NS 44 KETCH

Level indicator (fuel tank)	Gauge
Freshwater tank (litre)	polyethylene 450 (in 2 tanks)
Level indicator (freshwater)	Gauge
Greywater tank (litre)	stainless steel
Wheel steering	rack & pinion
Outside helm position	rack & pinion
Emergency tiller	yes
More info on hull	New paint in 06.2025
Extra info	All seacocks + skinfittings new 2022

## ACCOMMODATION

Cabins	2
Berths	6
Interior	Wood
Layout	Similar layout plan in expose
Floor	wood
Saloon	yes
Headroom saloon (m)	1,90
Heating	diesel ducted hot air
Chart table	yes
Aft Cabin	yes
Convertible berth	In saloon
Galley	L-Shape
Countertop	plastic
Sink	stainless steel
Cooker	calor gas 2 Burner
Oven	yes
Fridge	250L. (low consumption)
Hot water system	220V + engine 25 L. Boiler
Water pressure system	electrical
Manual and/or foot pump	yes



# RORQUAL NS 44 KETCH

Hot water tap	yes
Crockery	yes
Owners cabin	twin single
Bed length (m)	2 (new mattress 2022)
Wardrobe	hanging and shelves
Toilet	shared
Toilet system	electric New 2022
Wash basin	at the toilet
Shower	shared
Guest cabin 1	double bed Forward
Bed length (m)	1,95
Wardrobe	hanging and shelves

## MACHINERY

No of engines	1
Make	Volvo Penta
Type	MD22L
HP	50
kW	36.75
Fuel	diesel
Year installed	2018
Year of overhaul	2022
Maximum speed (kn)	7
Cruising speed (kn)	6
Consumption (l/hr)	3,0
Range (nm)	300
Engine hours	1824
Engine cooling system	freshwater heat exchanger
Drive	shaft
Shaft seal	yes
Engine controls	bowden cable



# RORQUAL NS 44 KETCH

<b>Gearbox</b>	mechanical
<b>Exhaust</b>	watercooled
<b>Propeller type</b>	fixed
<b>Propeller blades</b>	3
<b>Propeller shaft material</b>	stainless steel
<b>Manual bilge pump</b>	yes
<b>Electric bilge pump</b>	New 2022
<b>Start battery</b>	2 x 12V (200AH) 2022
<b>Service battery</b>	2 x 12V (520AH) 2022
<b>Battery monitor</b>	Victron 100/30 MPPT (2022)
<b>Battery charger</b>	Cristec 60 Ah (2022)
<b>Solar panel</b>	300W (2019)
<b>Diode battery combiners</b>	Victron (2022)
<b>Shorepower</b>	with cable 230V
<b>Extra info</b>	Starter Motor new 2022
<b>Extra info</b>	New Alternator 2022
<b>Extra info</b>	New water pump Aque Mare 2022

## NAVIGATION

<b>Compass</b>	Plastimo
<b>Depth sounder/log</b>	Raymarine ST60
<b>Windset</b>	Raymarine ST60 Tridata
<b>VHF</b>	2 x Icom M-402
<b>Autopilot</b>	Cetrek Hydraulic
<b>Rudder angle indicator</b>	Raymarine ST60
<b>Radar</b>	JRC 2000
<b>GPS</b>	Furuno GP32
<b>Plotter/GPS</b>	Raytheon RC630
<b>Wifi antenna</b>	Brookhouse IMUX
<b>AIS transponder</b>	Class B Transponder (2017)
<b>Transmitter</b>	ICOM IC-M802 SSB



# RORQUAL NS 44 KETCH

EPIRB	(2018)
Navigation lights	yes
Extra info	SSB Modem SCS Pactor

## EQUIPMENT

Sun awning	yes
Window cover	Inside
Boarding ladder	yes
Anchor	Rocna
Anchor chain	60 meter
Windlass	electrical Lofrans 1200W
Outboard support	yes
Davits	stainless steel
Davits controls	manual
Sea railing	wire
Grab rail (superstructure)	teak
Railing side opening gates	With netting
Pushpit	yes
Pulpit	yes
Life raft	container Sea Safe
Life raft (pers)	8
Last life raft survey	2012
Lifejackets	yes
Lifebuoy	yes
Clearview window	yes
Fenders	yes
Mooring lines	yes
Spare parts	yes
Tools	yes
Radio	Pioneer
Cockpit speakers	yes



# RORQUAL NS 44 KETCH

Speakers in salon	yes
Clock - barometer	yes
Fire extinguisher	yes
Extra info	Weather station
Extra info	Lightning insulation plate

## RIGGING

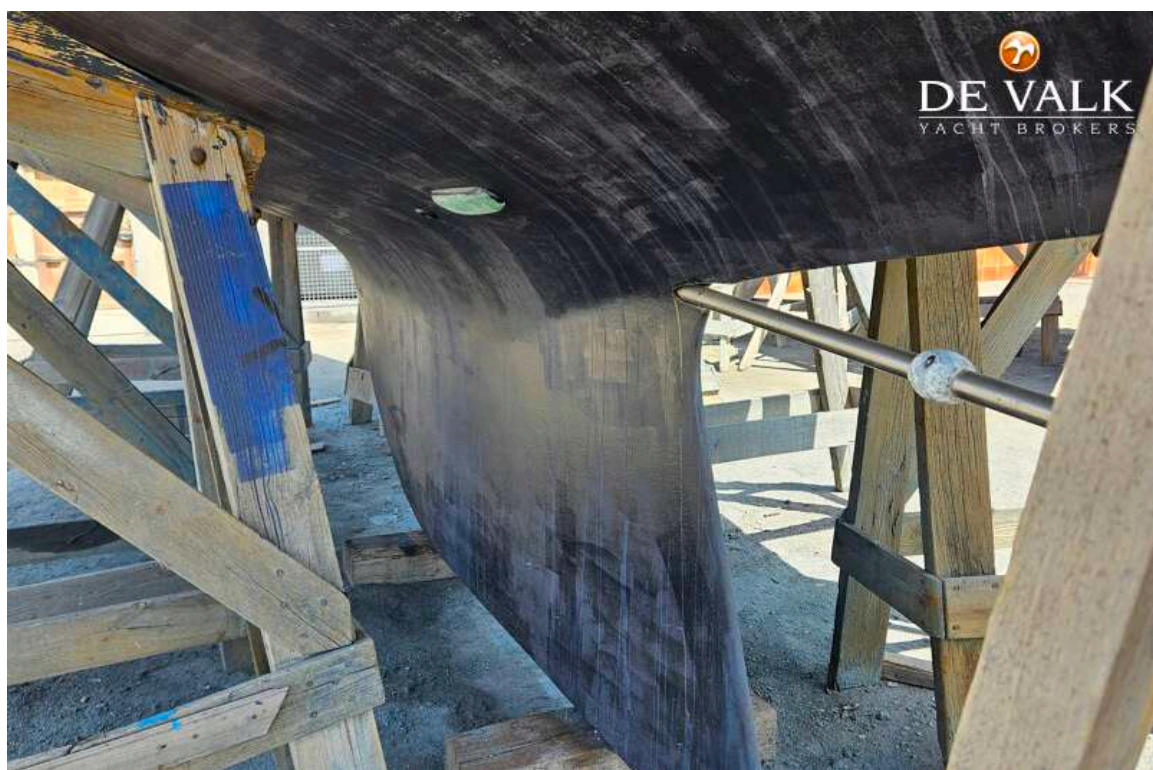
Rigging	ketch
Standing rigging	wire 2004
Brand mast	Sparcraft
Material mast	aluminium
Spreaders	2 units
Mainsail	VGC (2013) in very good conditions
Mainsail cover	Lazybag & Jacks
Battcars	Inox
Mizzen	In very good conditions
Jib	yes
Genoa	VGC (2017) in good conditions
Genoa furler	Profurl
Reefing System	slabreefing
Boomvang	tackle
Genoa sheetwinches	Andersen 52" ST 2 SP
Halyard winches	Lewmar 34" ST 2 SP
Reefing winch	Lewmar 6"
Multifunctional winches	2 x Lewmar 25" 2 SP
Extra info	Movable Forestay
Extra info	Halyards and sheets new 2022



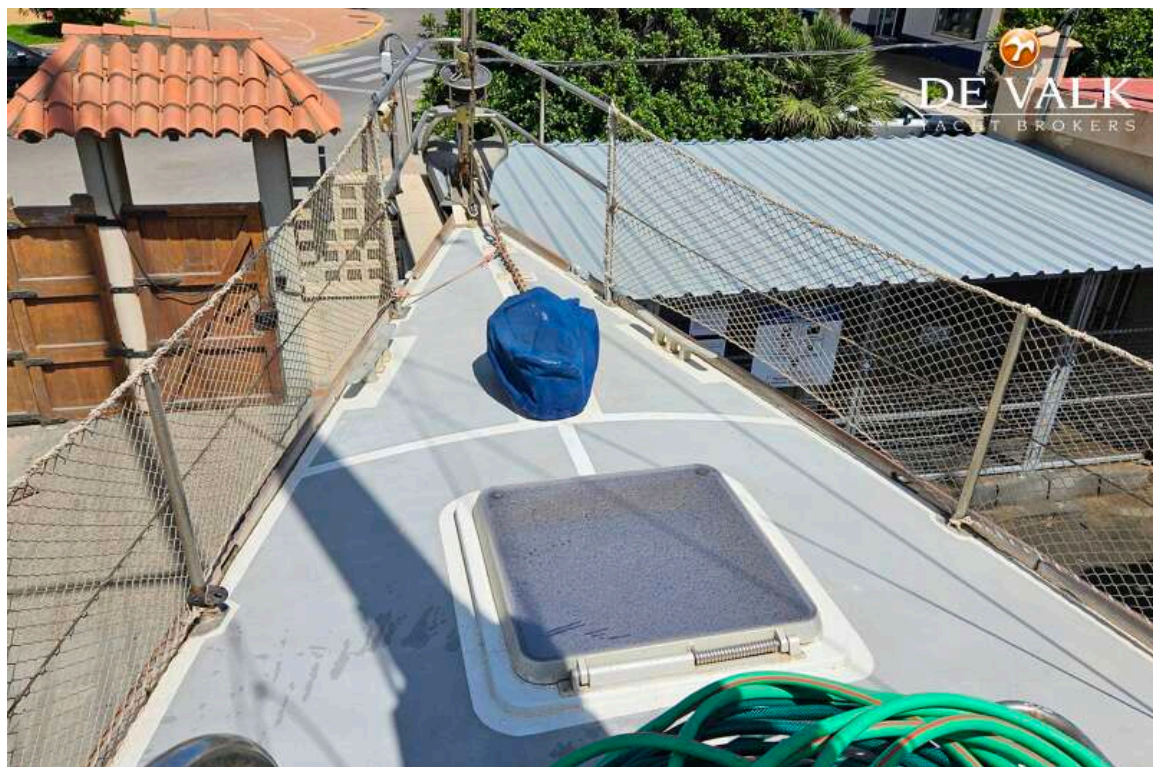
# RORQUAL NS 44 KETCH



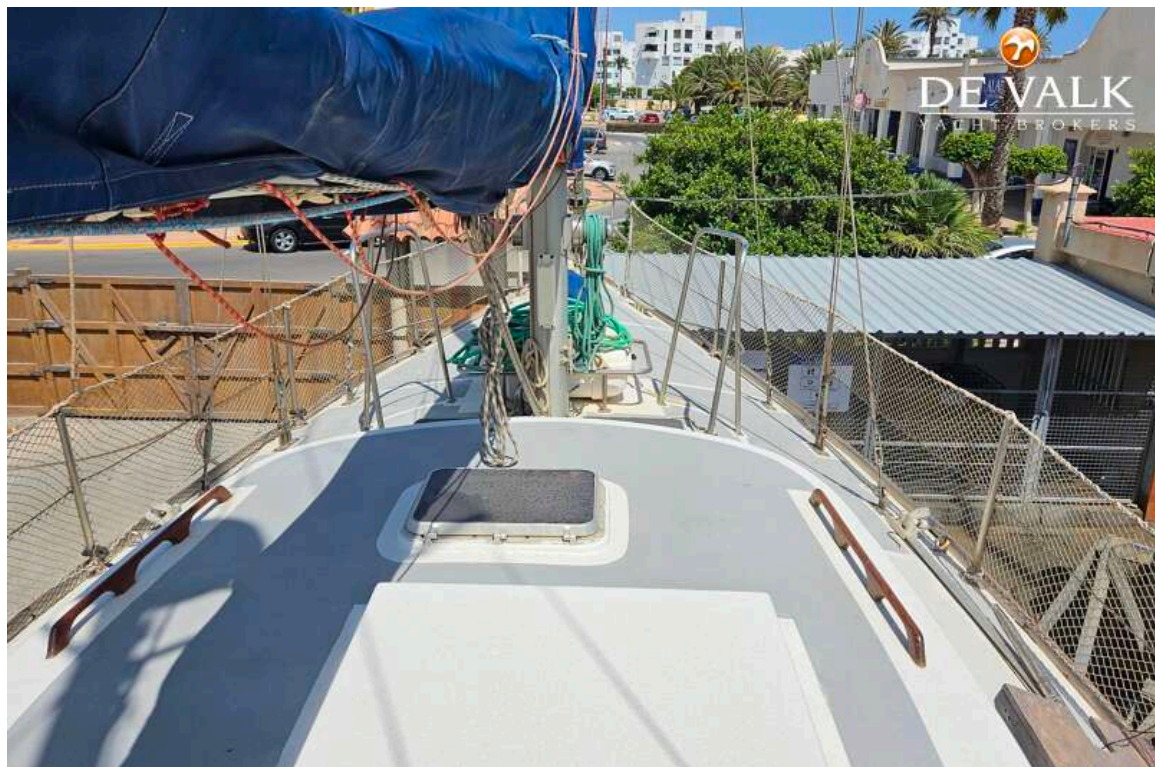
# RORQUAL NS 44 KETCH



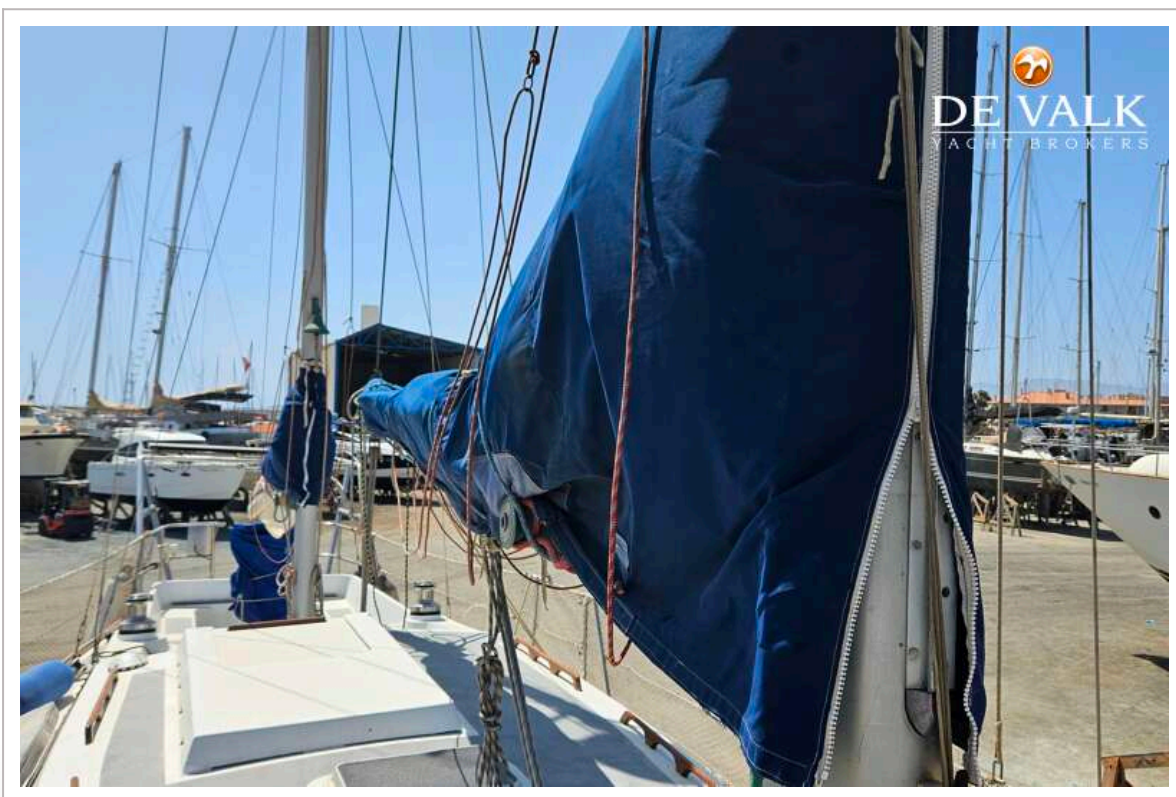
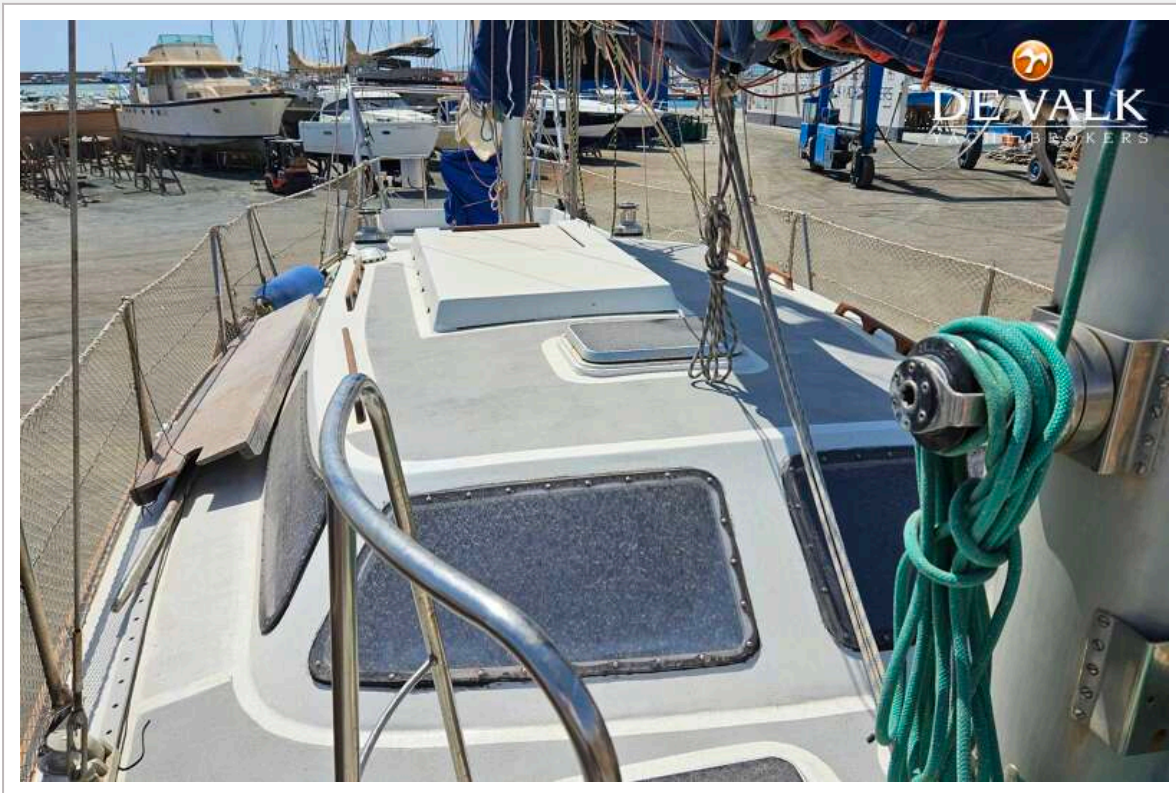
# RORQUAL NS 44 KETCH



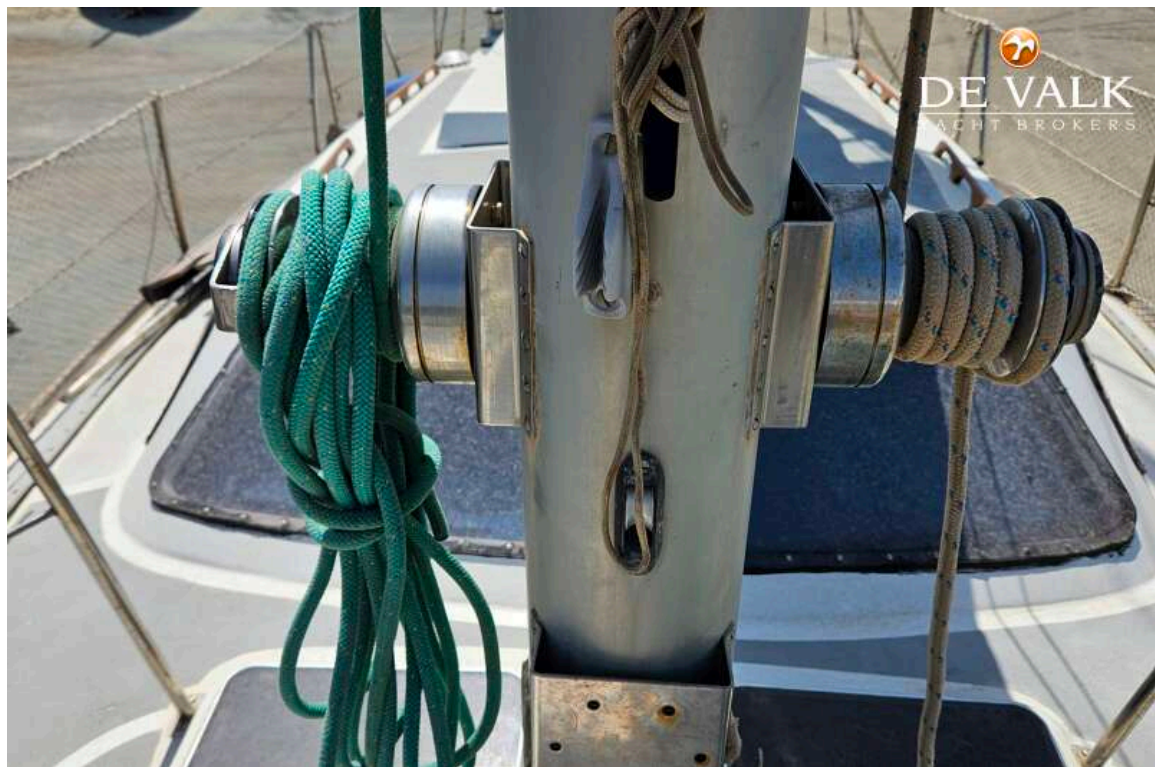
# RORQUAL NS 44 KETCH



# RORQUAL NS 44 KETCH



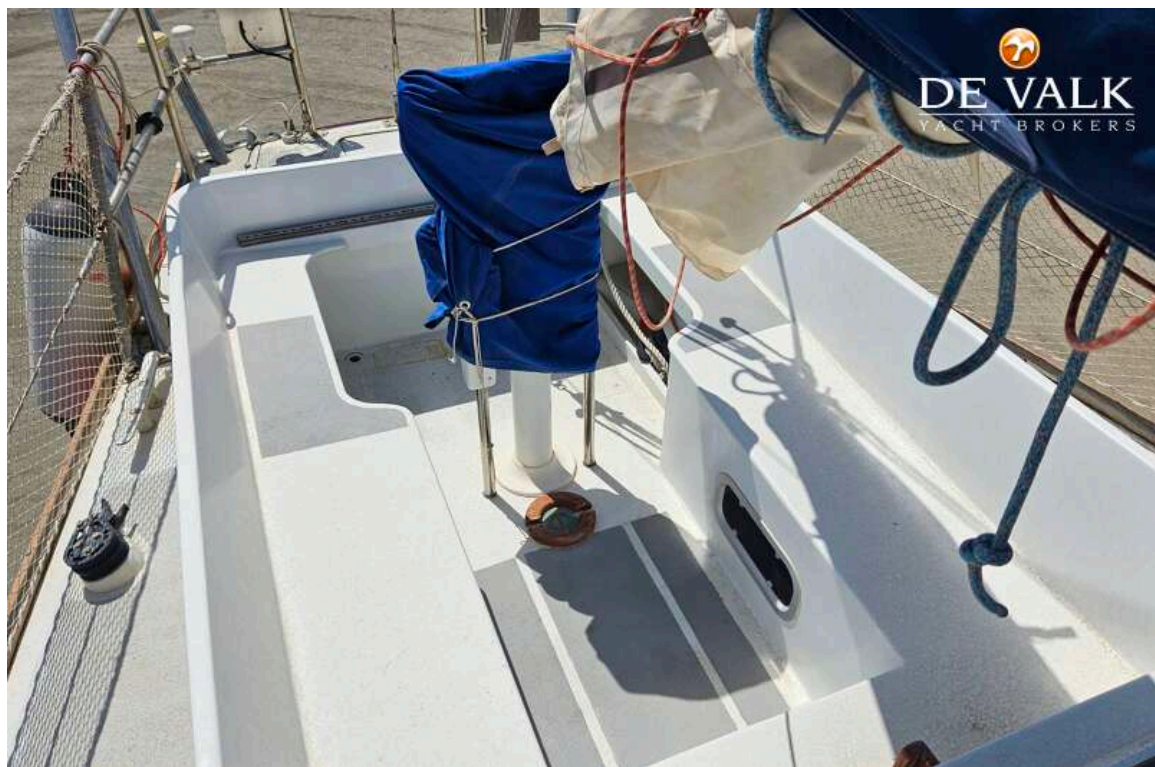
# RORQUAL NS 44 KETCH



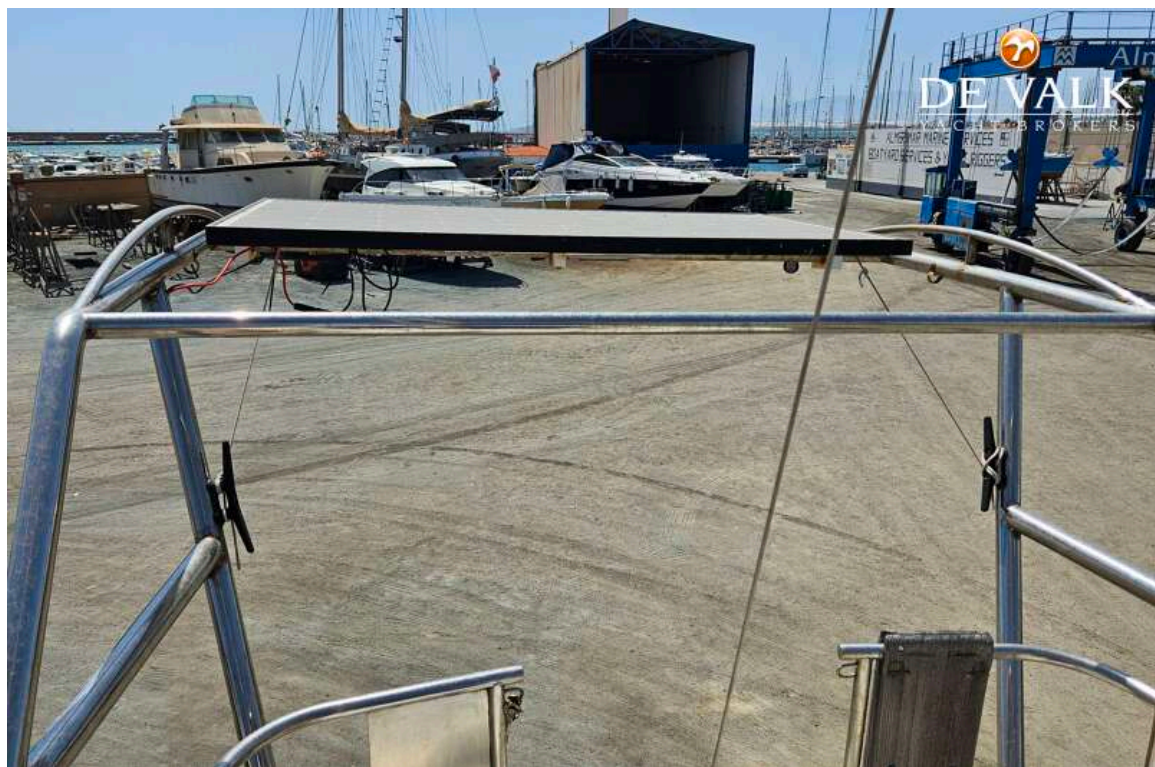
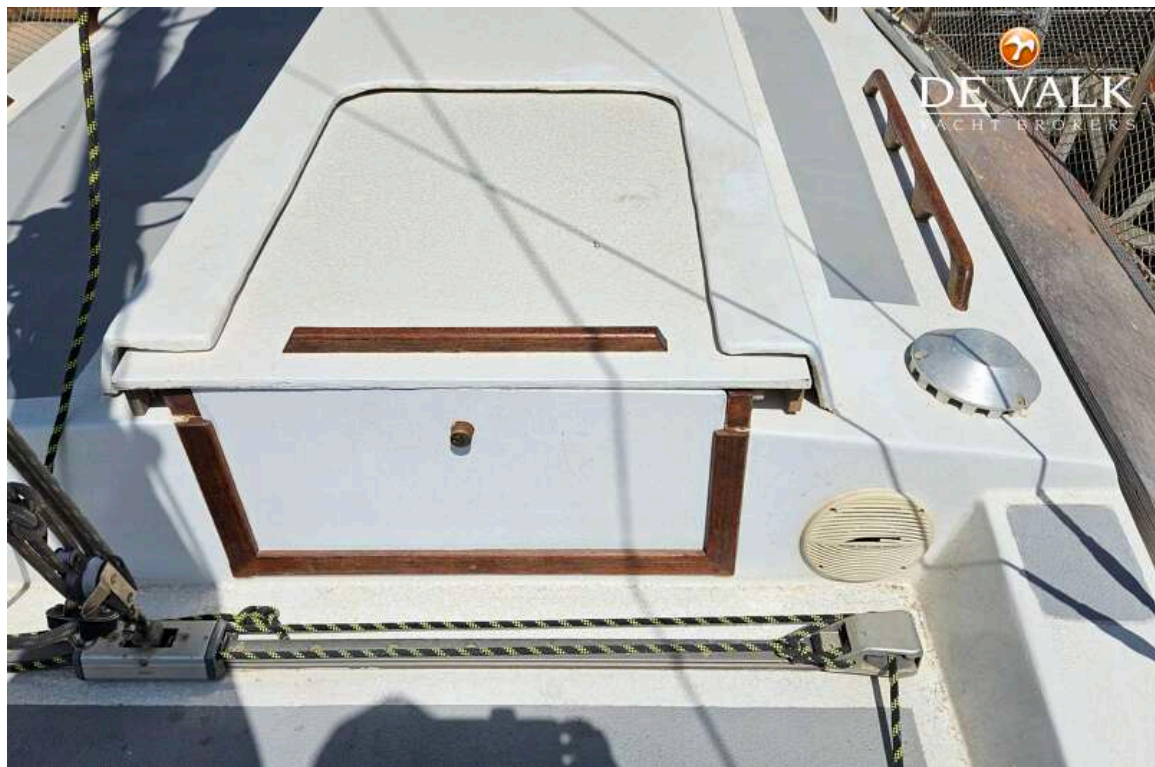
# RORQUAL NS 44 KETCH



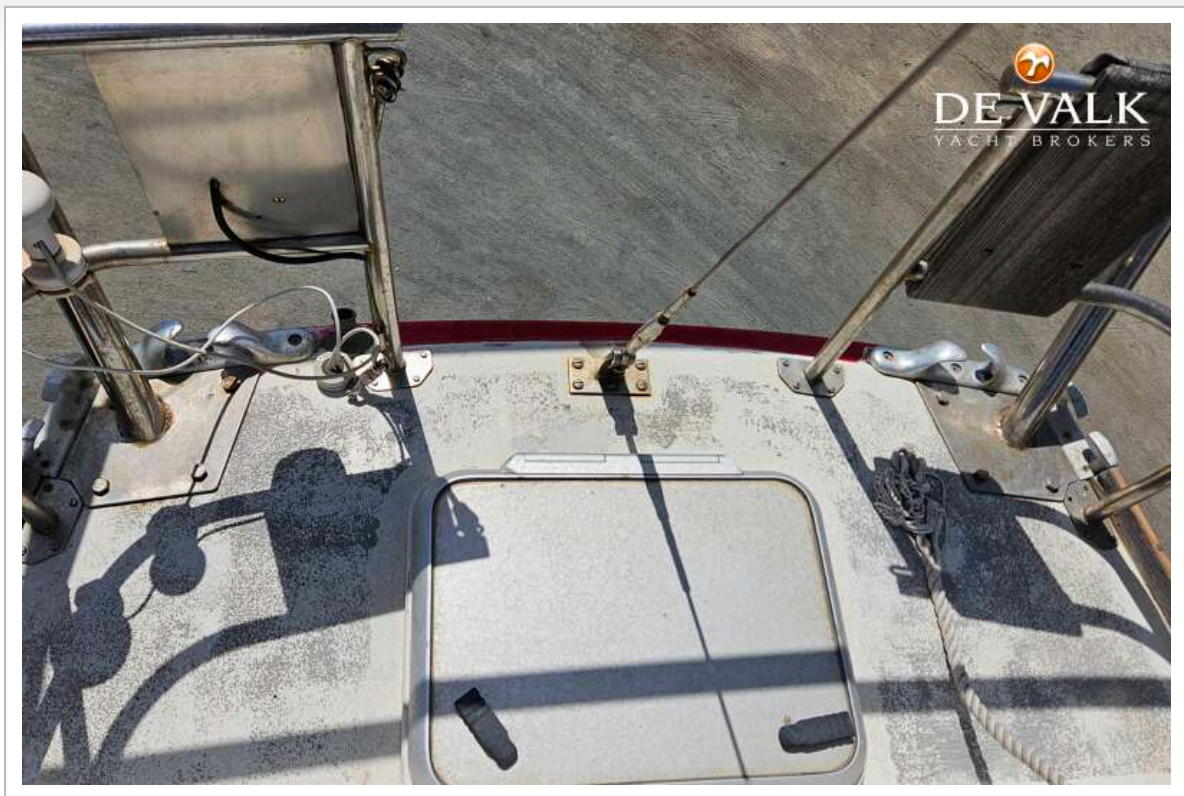
# RORQUAL NS 44 KETCH



# RORQUAL NS 44 KETCH



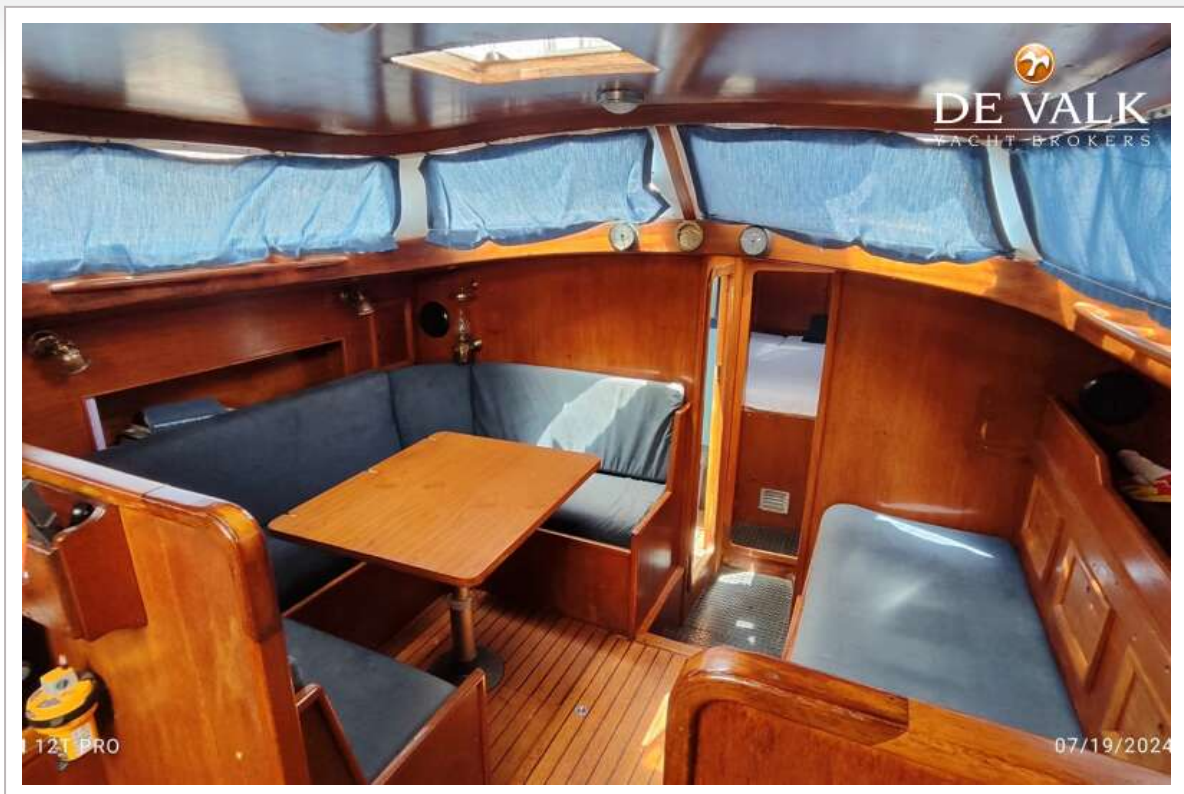
# RORQUAL NS 44 KETCH



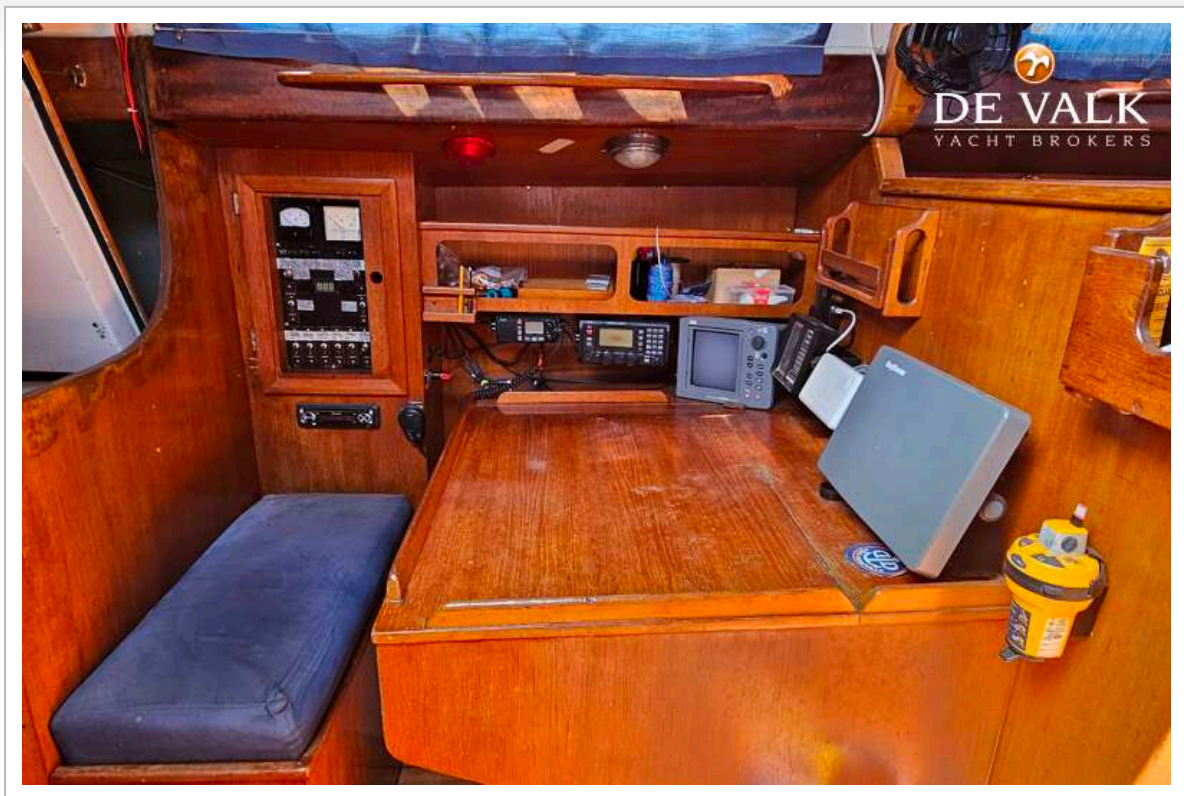
# RORQUAL NS 44 KETCH



# RORQUAL NS 44 KETCH



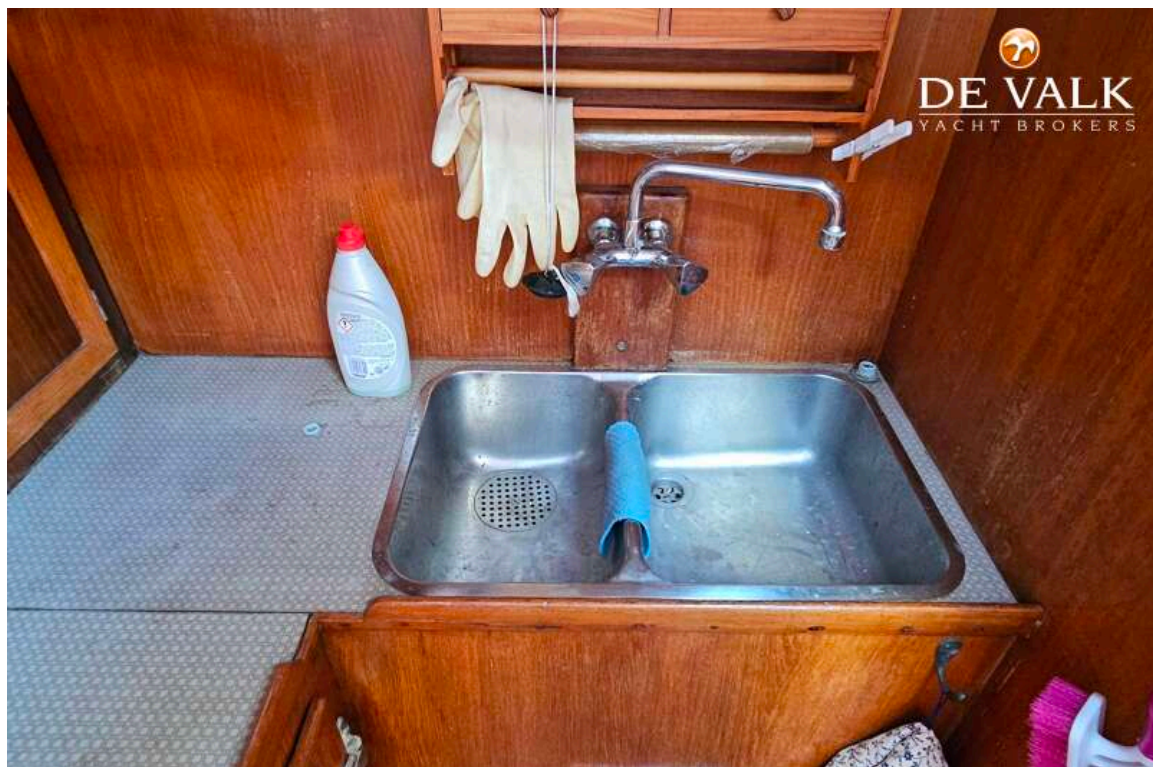
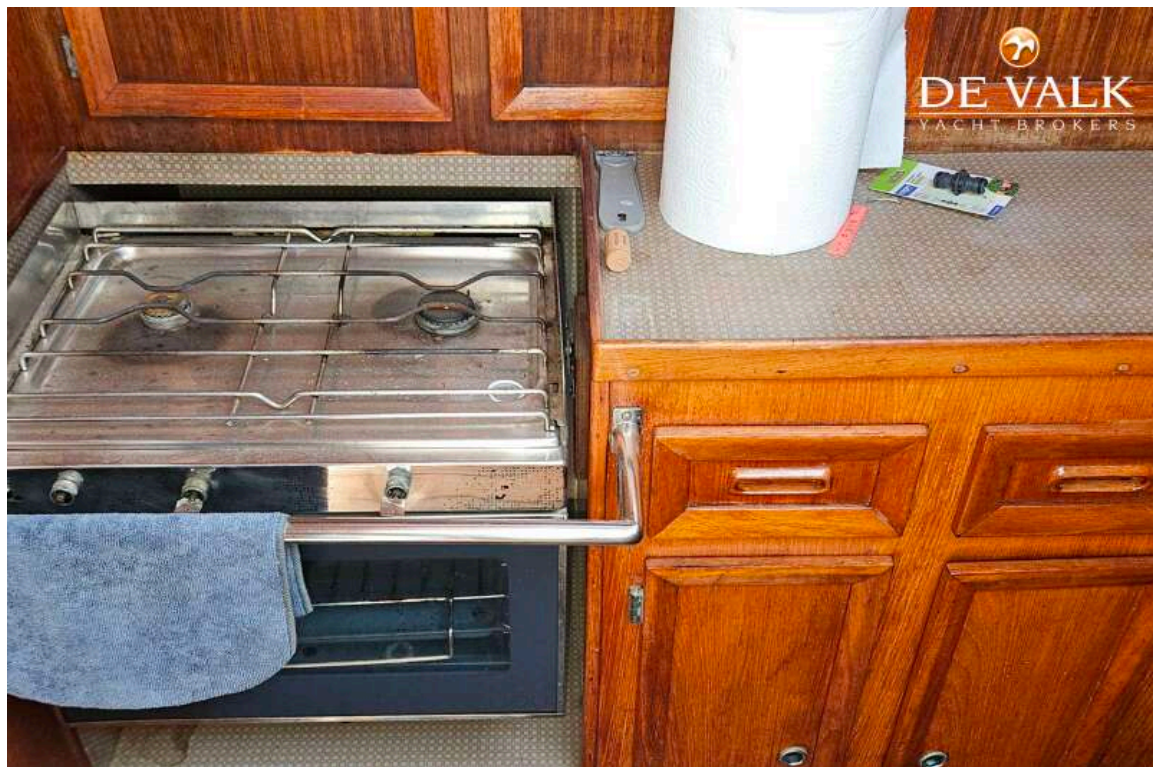
# RORQUAL NS 44 KETCH



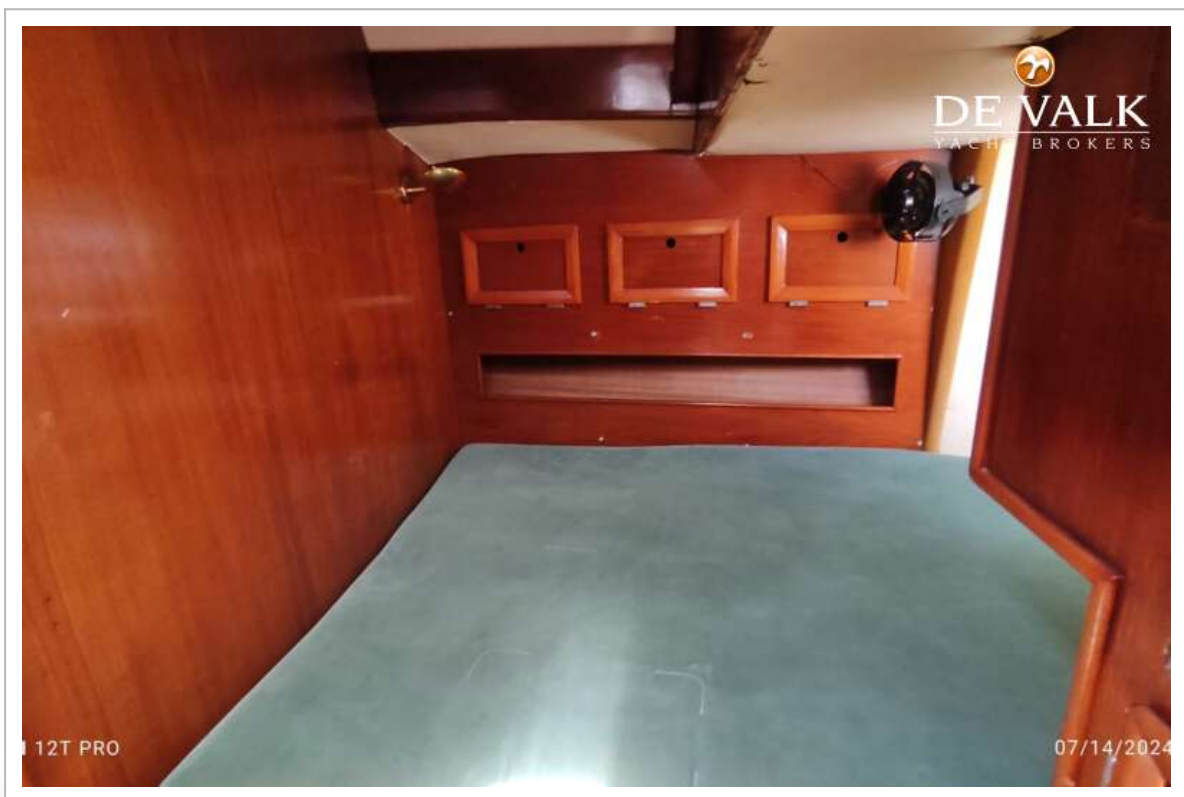
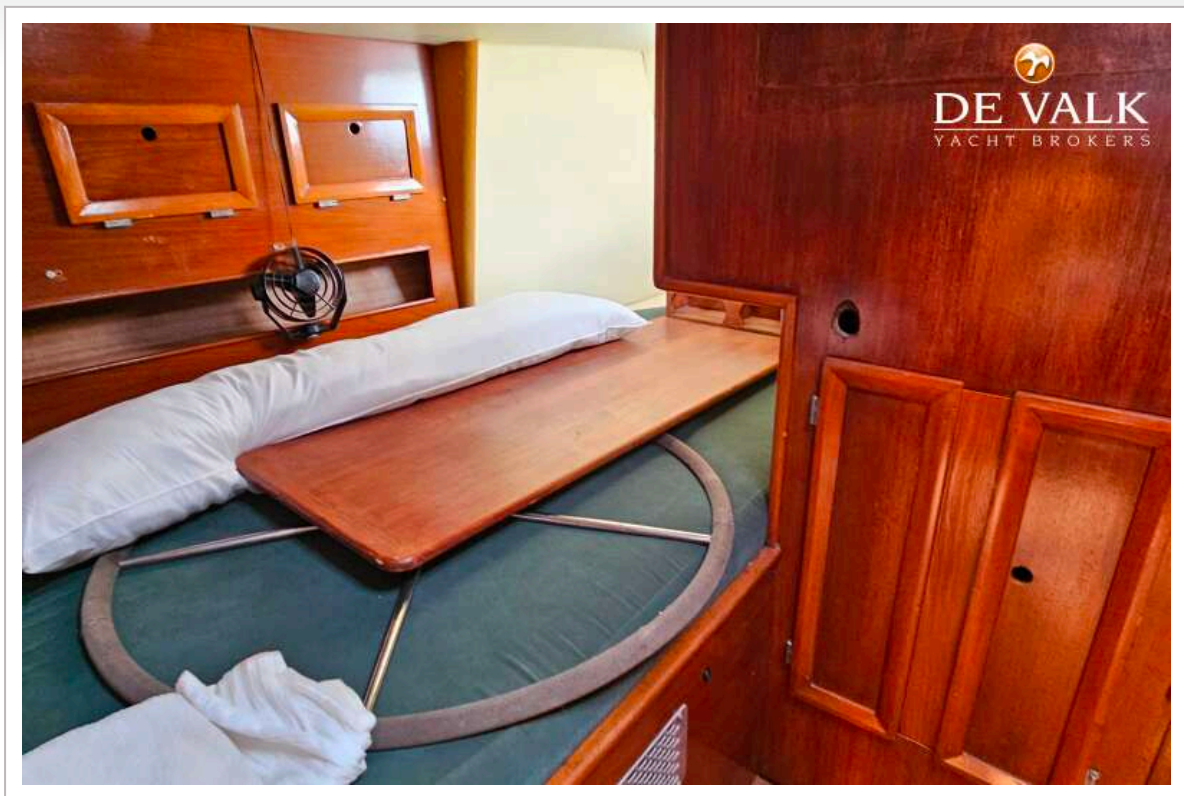
# RORQUAL NS 44 KETCH



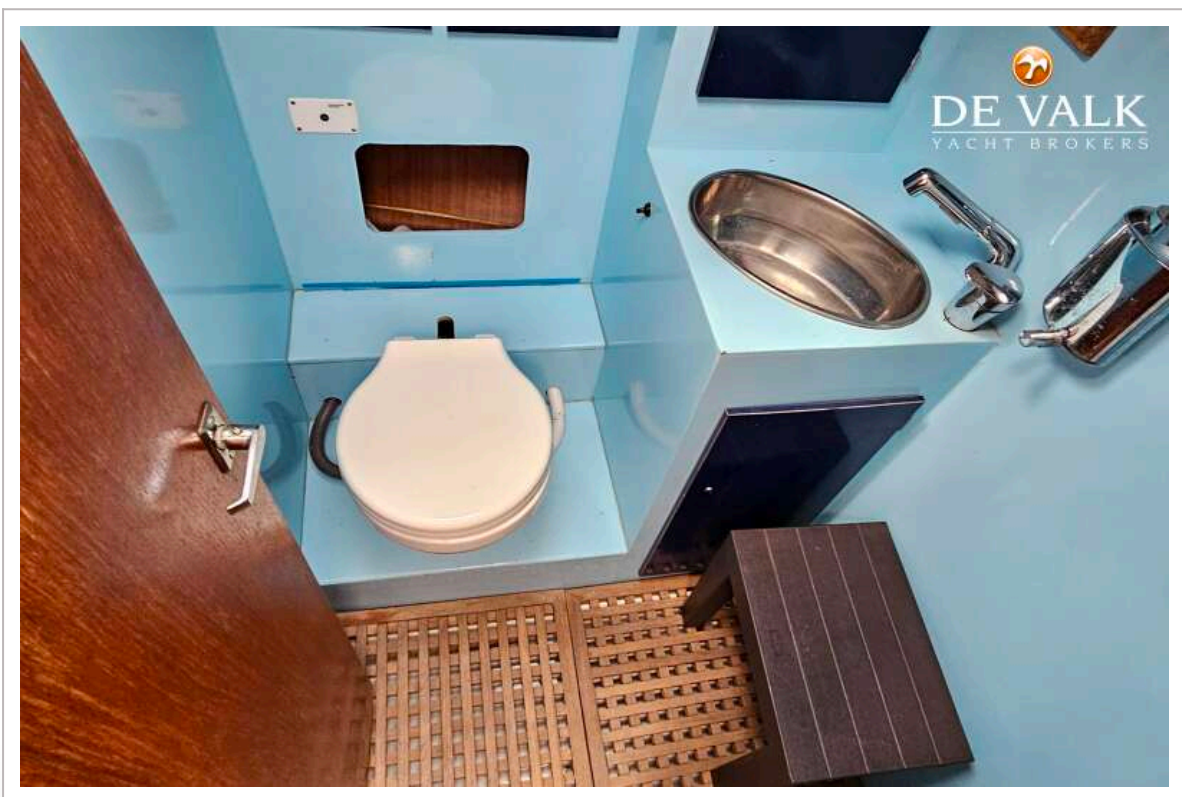
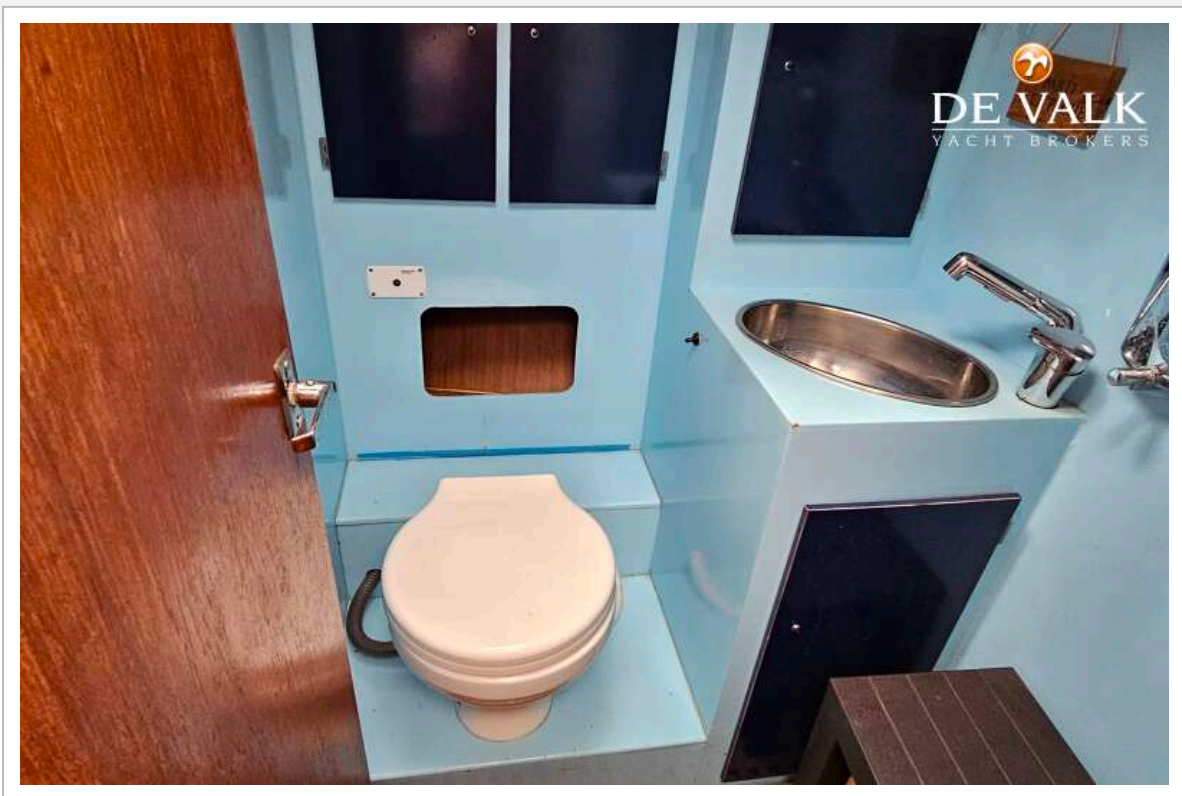
# RORQUAL NS 44 KETCH



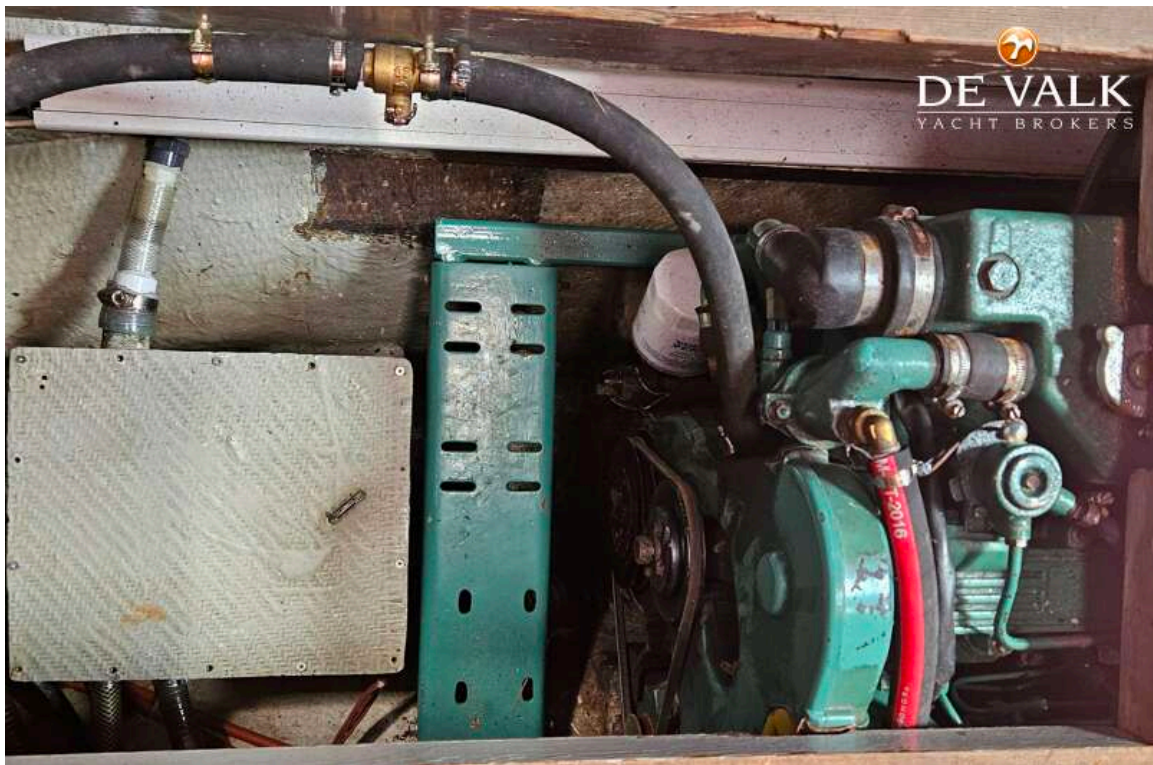
# RORQUAL NS 44 KETCH



# RORQUAL NS 44 KETCH



# RORQUAL NS 44 KETCH



# RORQUAL NS 44 KETCH

