



CRANCHI Z35

CRANCHI Z35

BROKER'S COMMENTS

Now for sale: a fully equipped Cranchi Z35 with a chic brown metallic color. This fast motor yacht features two powerful Volvo Penta engines and a Side Power bow thruster, making the boat easy to maneuver. The vessel is also richly equipped with navigation equipment and everything can be controlled from the steering position. The interior is beautifully finished in a light color and two cabins with spacious double beds. The open cockpit is very spacious and extended with a large swimming platform. An ideal boat for vacations and day trips. From now on to view in Loosdrecht!

Sjoerd Paddenburg

SPECIFICATIONS

| | | | |
|---------------------|--------------------------------|----------------|---------------------------------|
| Dimensions | 11.70 x 3.49 x 2,85 / 1.00 (m) | Builder | CANTIERE NAUTICO CRANCHI S.p.A. |
| Built | 2018 | Cabins | 2 |
| Material | GRP | Berths | 6 |
| Engine(s) | 2 x Volvo Penta D4-260 diesel | Hp/Kw | 2 x 260.00 (hp), 191.36 (kw) |
| Asking price | € 299.500 (VAT Paid) | Lying | contact Loosdrecht |

CONTACT

| | | | |
|---------------------|--|------------------|----------------------|
| Sales office | De Valk Loosdrecht B.V. | Telephone | +31 (0)35 582 90 30 |
| Address | 't Breukeleveense Meentje 6 1231LM Loosdrecht / Wijdmeren NL | E-mail | loosdrecht@devalk.nl |

DISCLAIMER

These particulars are given in good faith as supplied but cannot be guaranteed.



GENERAL

| | |
|------------------------------|---------------------------------|
| Model | CRANCHI Z35 |
| Type | motor yacht |
| LOA (m) | 11,70 |
| Beam (m) | 3,49 |
| Draft (m) | 1,00 |
| Draft min (m) | 2,85 |
| Headroom (m) | 2,00 |
| Year built | 2018 |
| Builder | CANTIERE NAUTICO CRANCHI S.p.A. |
| Country | Italy |
| Designer | Centro Studi Ricerche Cranchi |
| Displacement (t) | 7,3 |
| CE norm | B |
| Hull material | GRP |
| Hull colour | brown |
| Hull shape | deep-V |
| Superstructure material | GRP |
| Rubbing strake | stainless steel |
| Deck material | GRP |
| Deck finish | non-skid moulded in |
| Superstructure deck finish | non-skid moulded in |
| Cockpit deck finish | teak |
| Window frame | stainless steel |
| Window material | perspex |
| Portholes | stainless steel 4x |
| Radar arch | collapsible Electric |
| Fuel tank (litre) | stainless steel 600 |
| Level indicator (fuel tank) | yes |
| Freshwater tank (litre) | 190 |
| Level indicator (freshwater) | yes |



| | |
|------------------------------|------------------------|
| Blackwater tank (litre) | 70 |
| Level indicator (blackwater) | yes |
| Blackwater tank extraction | deck extraction + pump |
| Wheel steering | hydraulic |
| Outside helm position | hydraulic |

ACCOMMODATION

| | |
|-------------------------|----------------------------------|
| Cabins | 2 |
| Berths | 6 |
| Interior | oak White Washed |
| Floor | woodprint PVC |
| Open cockpit | yes |
| Saloon | yes |
| Headroom saloon (m) | 2,00 |
| Heating | diesel ducted hot air Air-tronic |
| Dinette | yes |
| Sliding door to cockpit | yes |
| Galley | yes |
| Countertop | plastic |
| Sink | stainless steel |
| Cooker | calor gas 2 Burners |
| Oven | yes |
| Fridge | 2x |
| Freezer | In fridge |
| Hot water system | 220V + engine Boiler |
| Water pressure system | electrical |
| Coffee maker | Nespresso |
| Owners cabin | double bed |
| Wardrobe | hanging and shelves |
| Bathroom | shared |
| Toilet | shared |



| | |
|---------------|--------------------------------------|
| Toilet system | electric |
| Wash basin | in the bathroom |
| Shower | shared |
| Guest cabin 1 | twin single To convert in double bed |
| Wardrobe | hanging and drawers |
| Extra info | Outside kitchen with grill |

MACHINERY

| | |
|-------------------------|---------------------------|
| No of engines | 2 |
| Make | Volvo Penta |
| Type | D4-260 |
| HP | 260 |
| kW | 191.36 |
| Fuel | diesel |
| Engine hours | 670 |
| Engine cooling system | freshwater heat exchanger |
| Drive | stern |
| Engine controls | electrical |
| Gearbox | hydraulic |
| Bowthruster | electric Side power |
| Propeller type | fixed |
| Electrical installation | 12V/230V |
| Start battery | yes |
| Service battery | 2x Varta 12V / 230 Ah |
| Battery monitor | yes |
| Battery charger | Mastervolt 12V/75-3 |
| Inverter | Mastervolt 12V/1500W |
| Diode battery combiners | yes |
| Shorepower | with cable |

NAVIGATION



| | |
|------------------------|--------------------|
| Compass | Ritchie |
| Electric compass | On autopilot |
| Depth sounder/log | Garmin |
| VHF | Garmin GHS 11i |
| Autopilot | Garmin |
| Rudder angle indicator | yes |
| Radar | yes |
| Radar/GPS/plotter | Garmin GPSmap 7410 |
| AIS receiver | yes |
| Navigation lights | yes |

EQUIPMENT

| | |
|-------------------|--|
| Sprayhood | yes |
| Cockpit cover | yes |
| Cockpit cushions | yes |
| Cockpit table | yes |
| Bathing platform | yes |
| Boarding ladder | stainless steel |
| Transom door | yes |
| Deck shower | yes |
| Anchor | yes |
| Windlass | electrical Lofrans with remote control |
| Sea railing | stainless steel |
| Wiper | yes |
| Horn | electric |
| TV | 3x Samsung |
| Radio | Fusion MS-MRX300 |
| Sub-woofer | yes |
| Cockpit speakers | Fusion |
| Speakers in salon | Fusion |
| Extra info | yes |



Extra info

yes



CRANCHI Z35



CRANCHI Z35



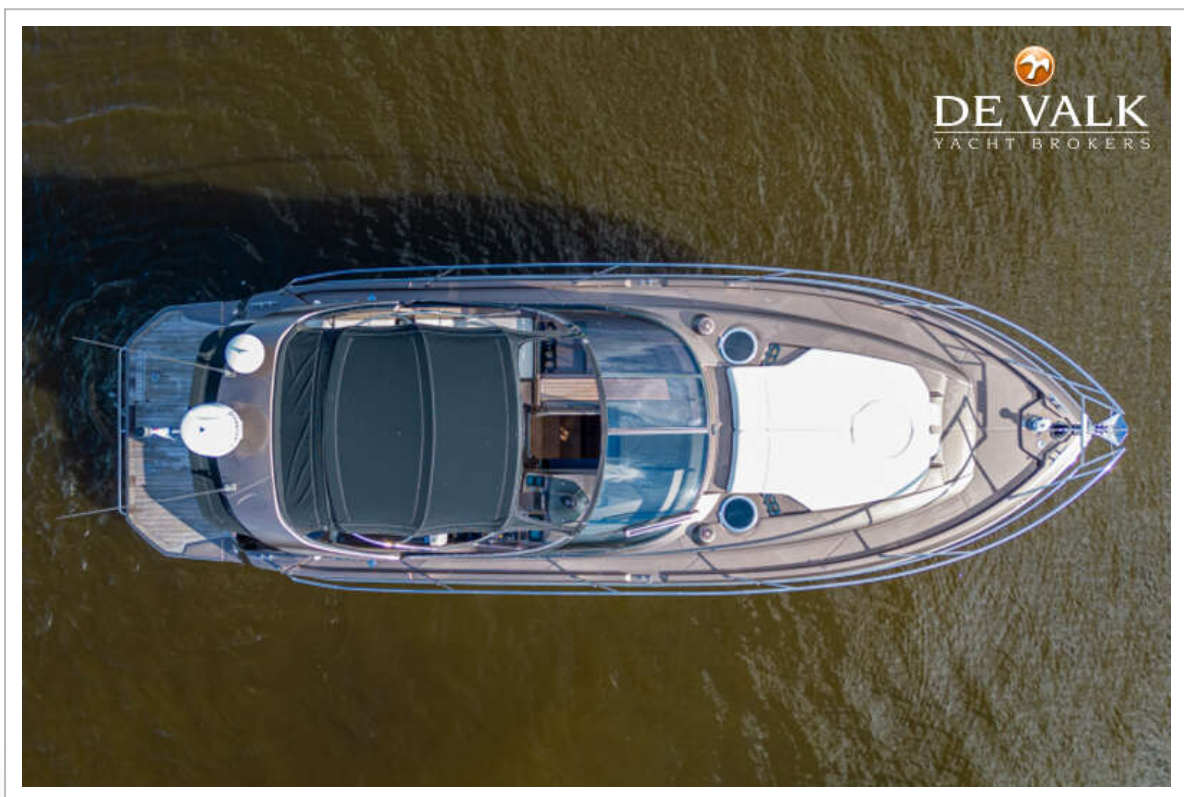
CRANCHI Z35



CRANCHI Z35



CRANCHI Z35



CRANCHI Z35



CRANCHI Z35



CRANCHI Z35



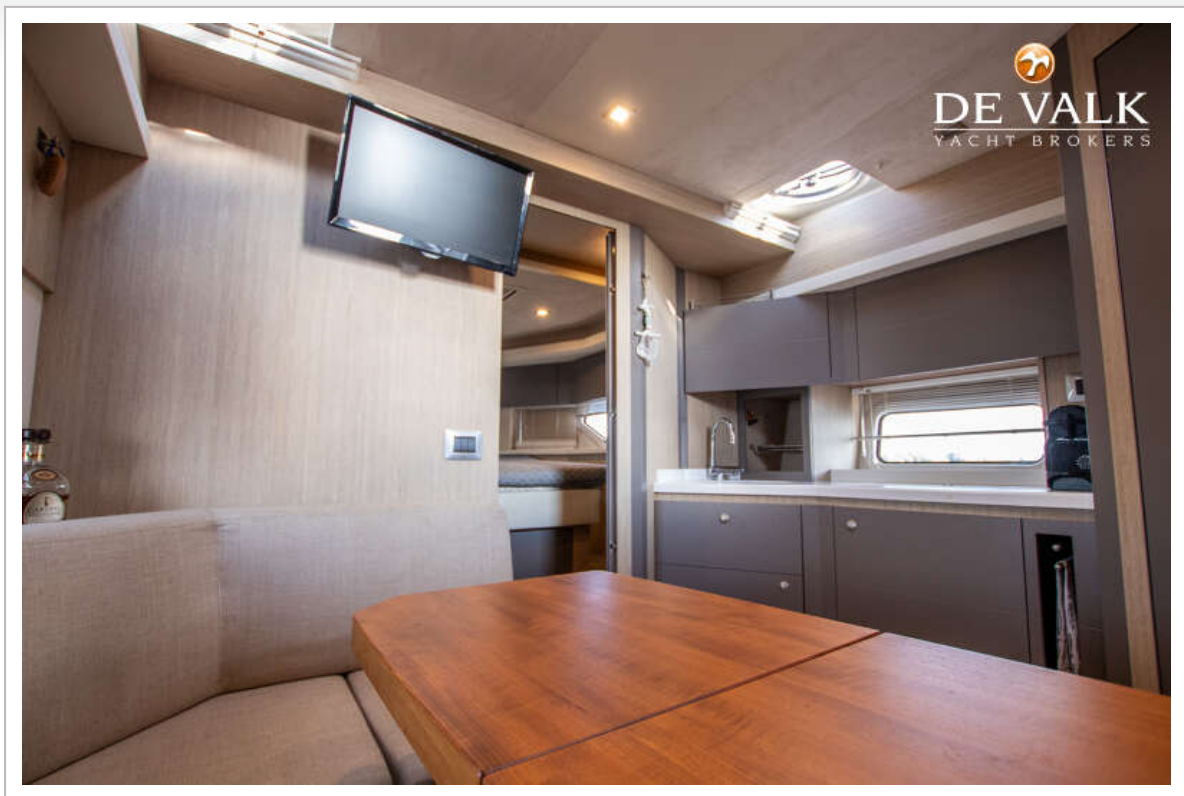
CRANCHI Z35



CRANCHI Z35



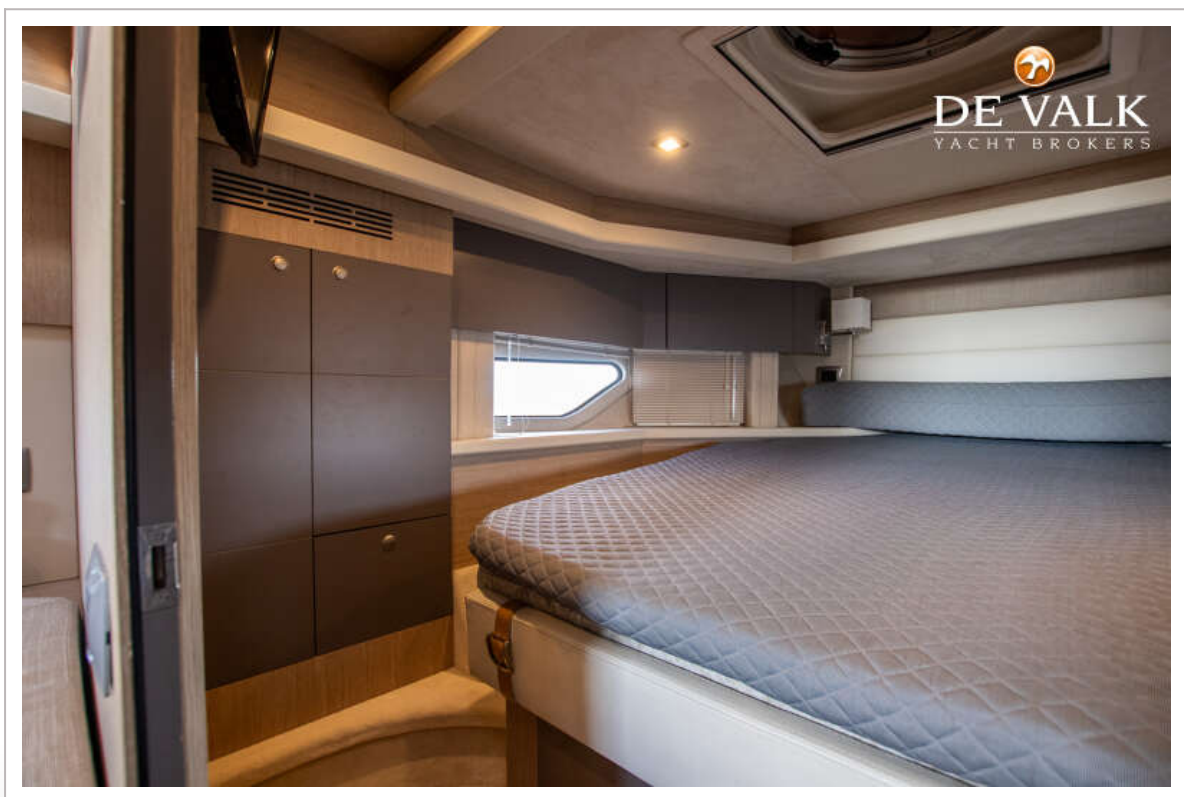
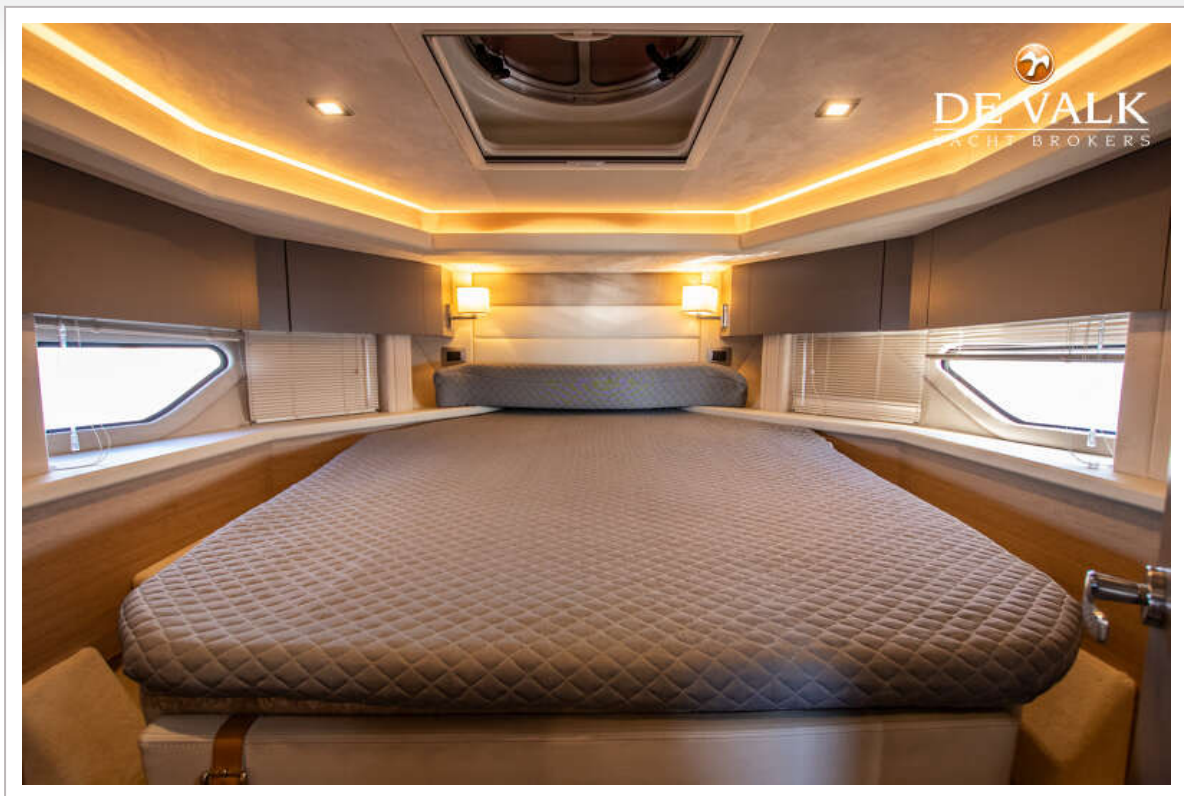
CRANCHI Z35



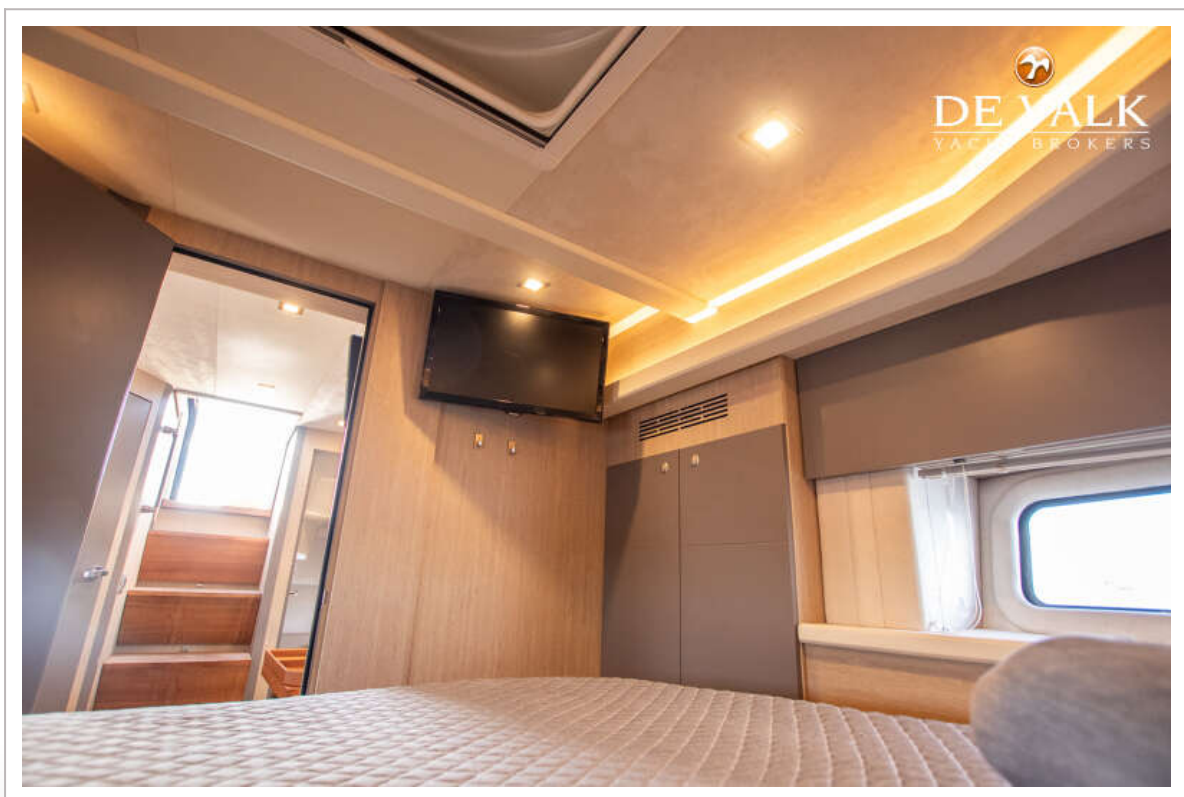
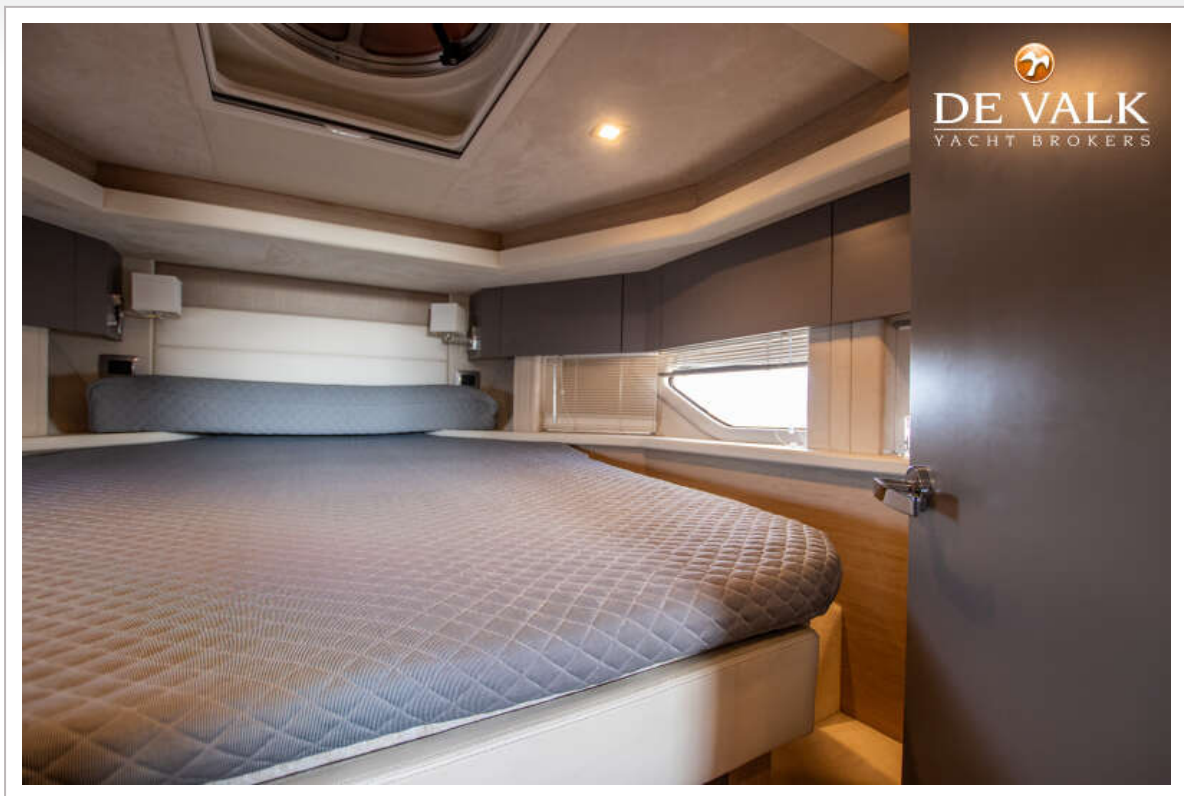
CRANCHI Z35



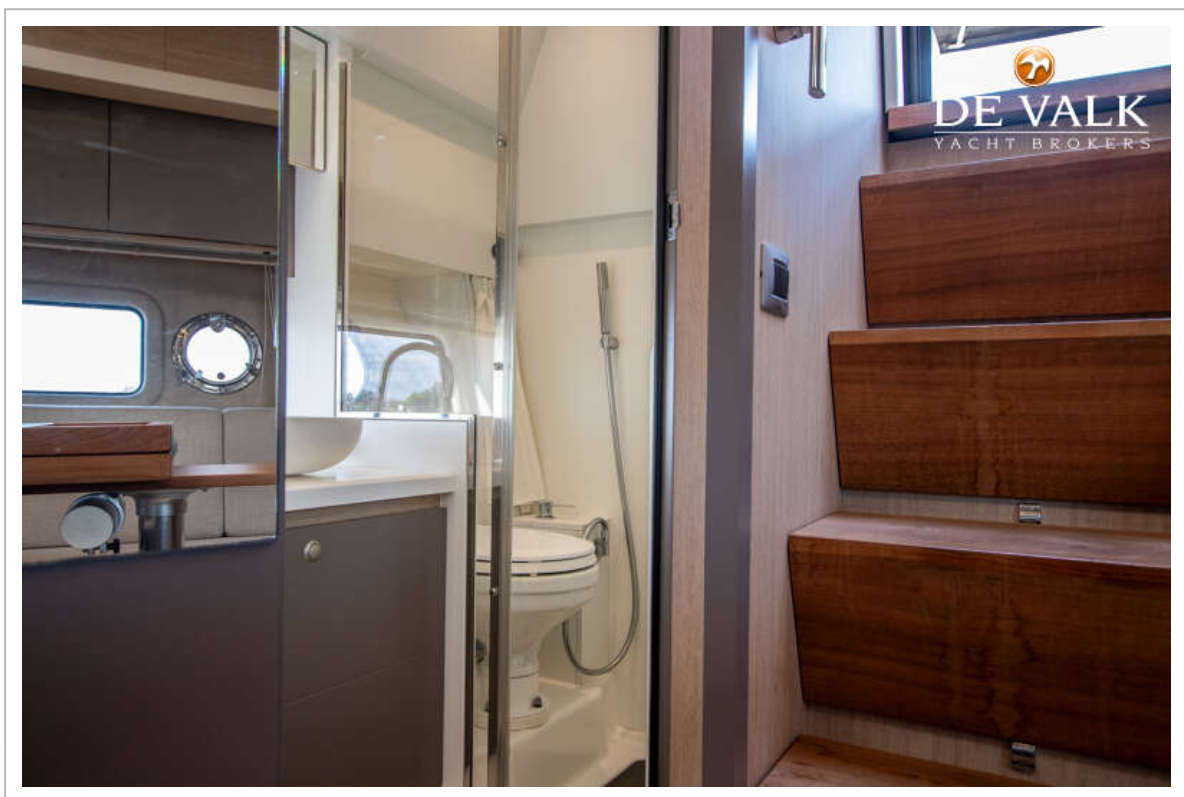
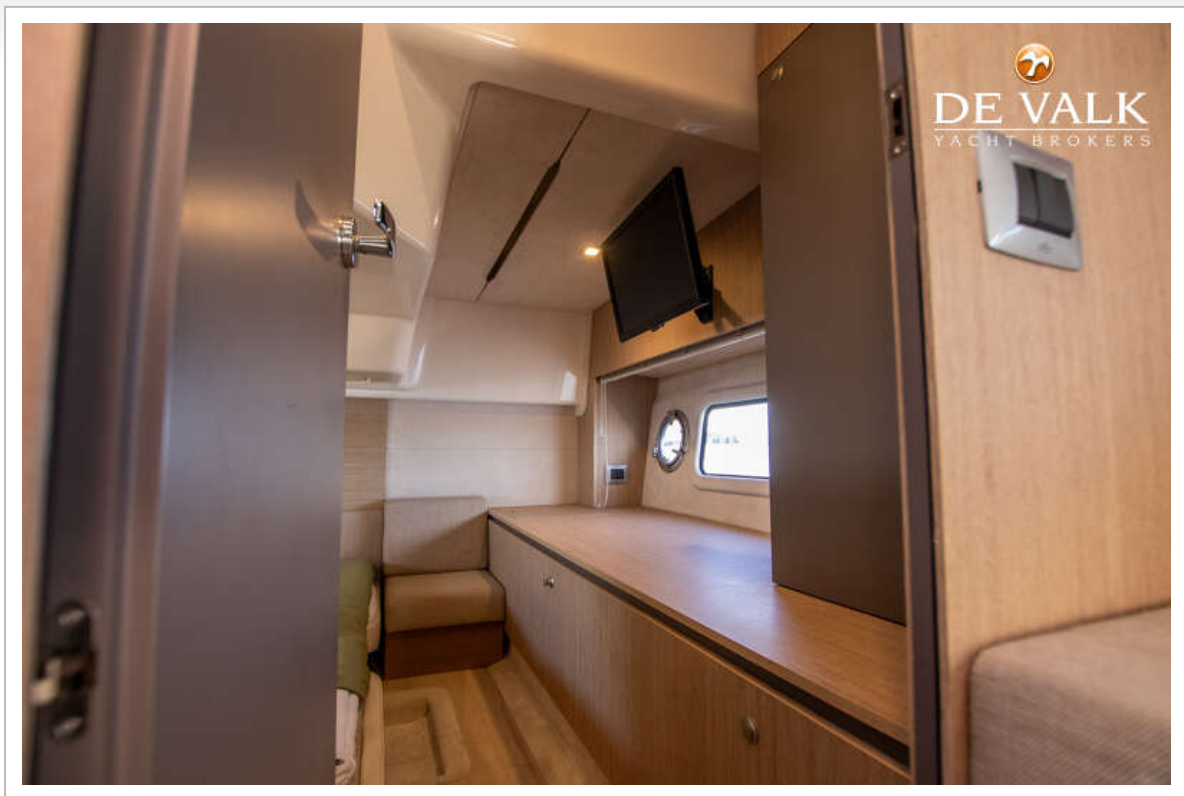
CRANCHI Z35



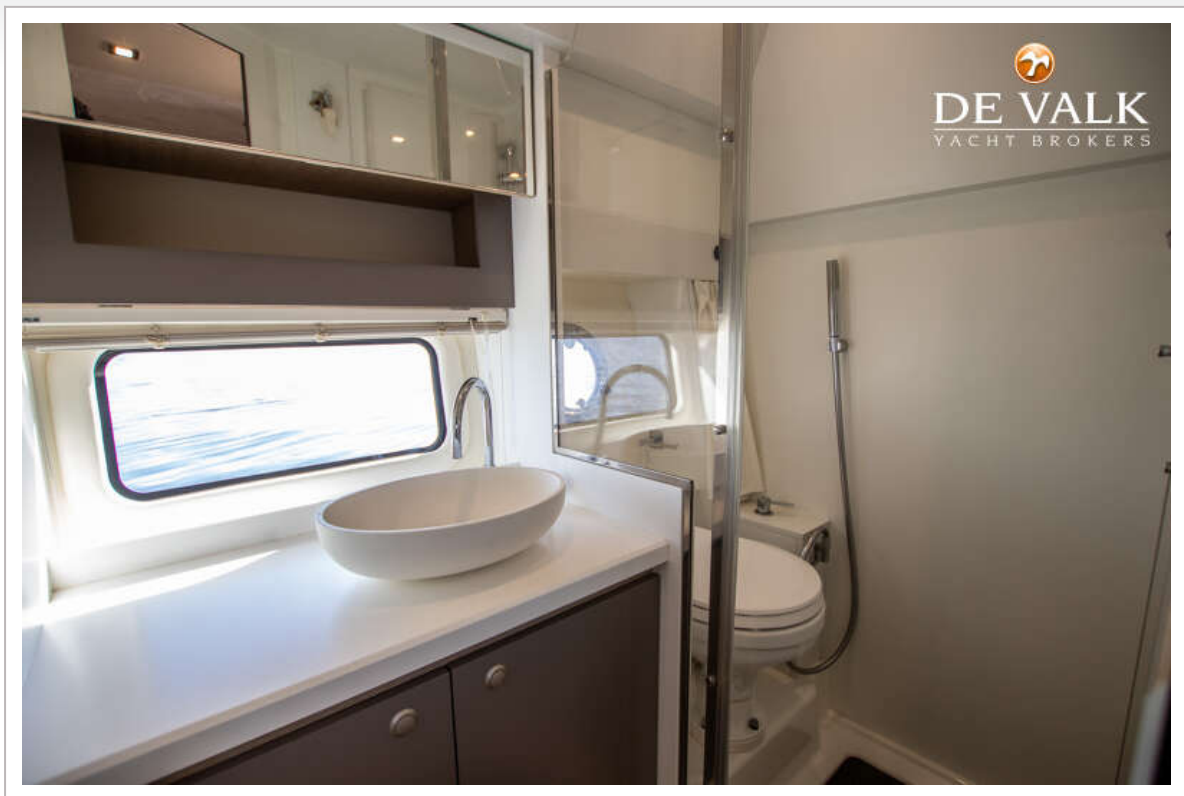
CRANCHI Z35



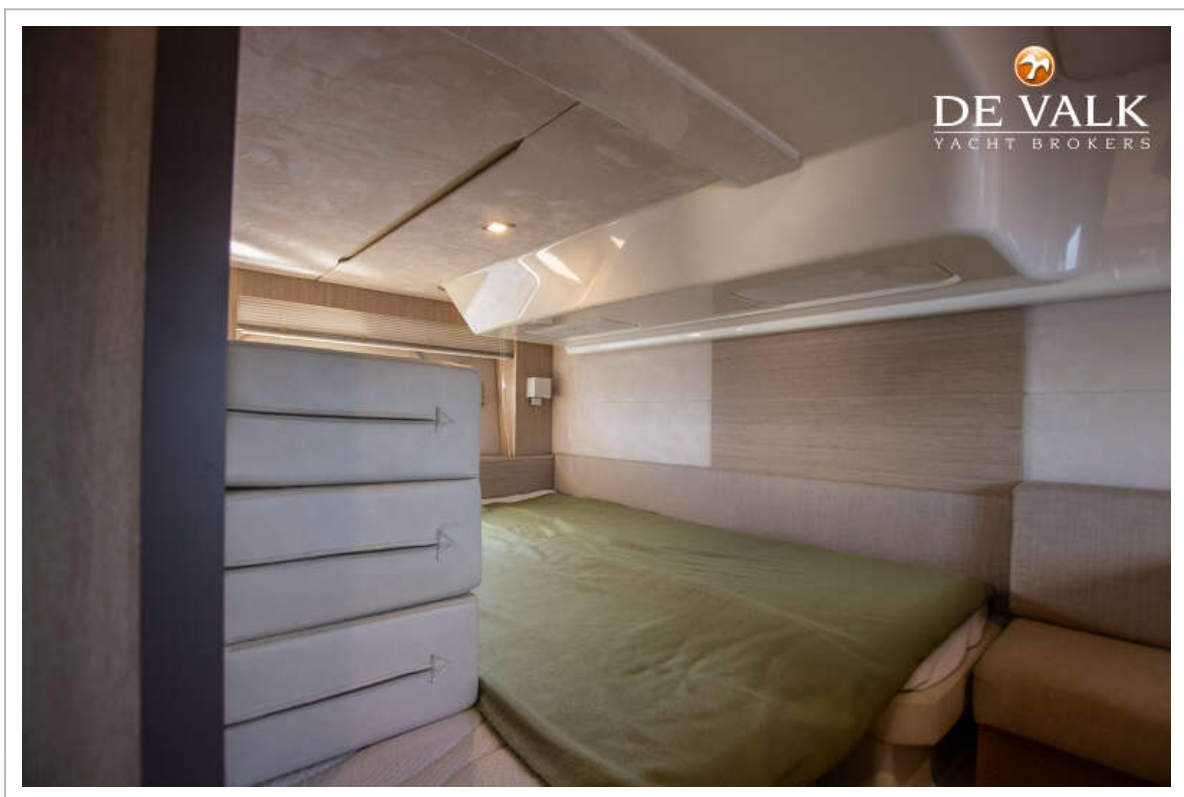
CRANCHI Z35



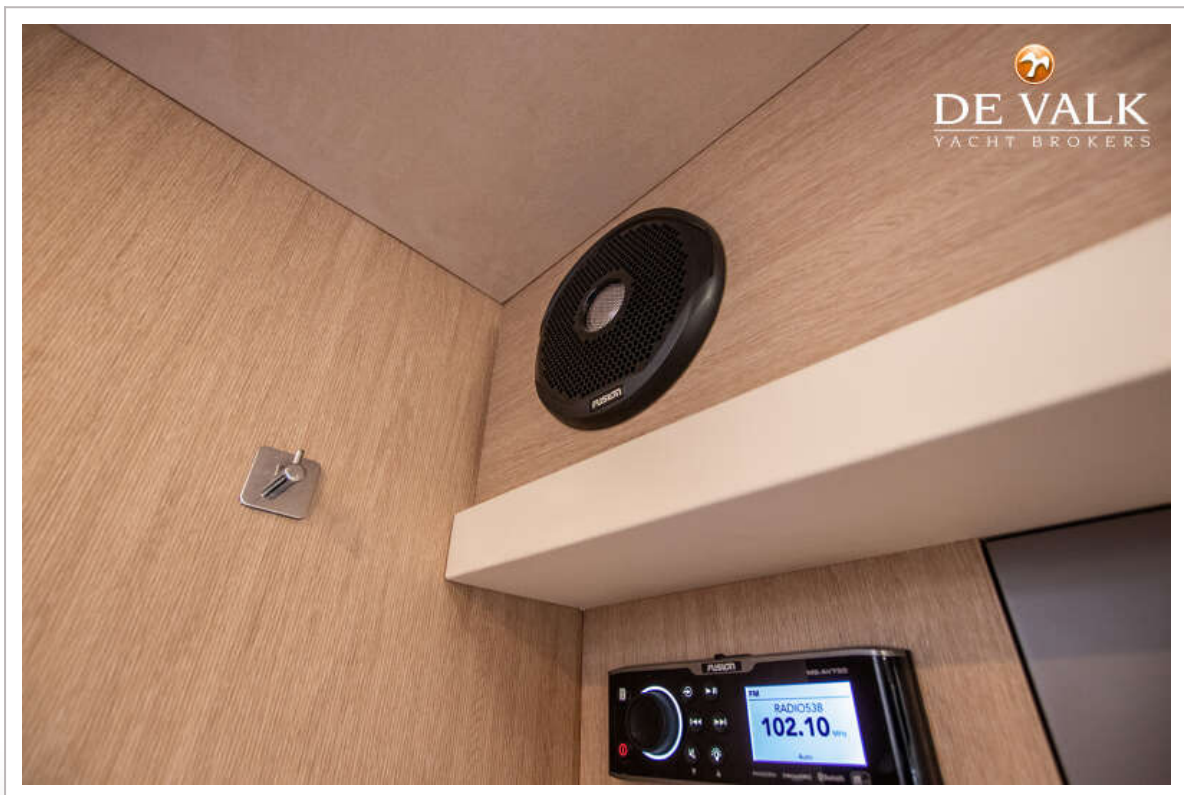
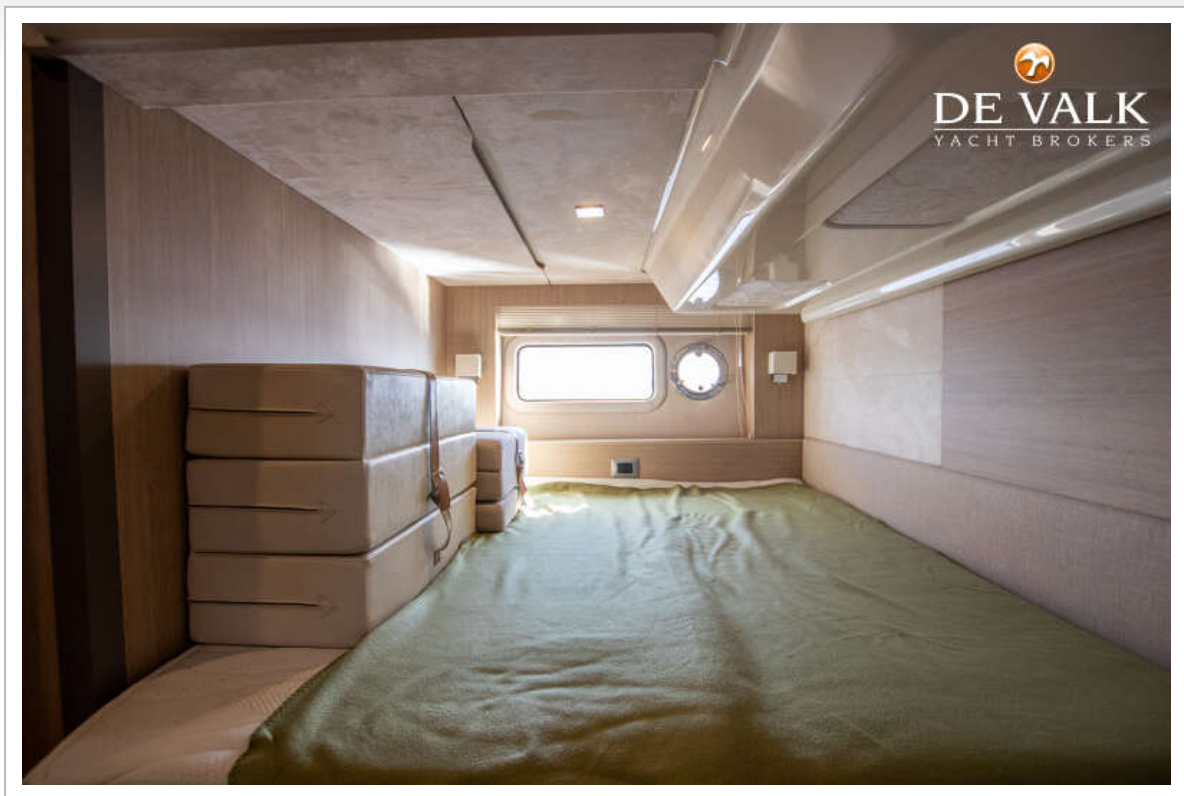
CRANCHI Z35



CRANCHI Z35



CRANCHI Z35



CRANCHI Z35



CRANCHI Z35



