



## BENETEAU OCEANIS 48

## BROKER'S COMMENTS

This beautiful Beneteau Oceanis 48 from 2012 is a real eye-catcher, with a robust design and luxurious finish. Thanks to her two careful owners since new, the boat is in excellent condition and offers ultimate comfort for long sailing trips. The interior is spacious and stylish, perfect for both relaxation and living space. The Oceanis 48 is ideal for sailors looking for performance as well as luxury. With modern technologies, aircon and solid motorisation, this is a reliable and safe choice for adventures at sea. An opportunity not to be missed! Spanish matricula paid.

*Willem Koopmans*

## SPECIFICATIONS

<b>Dimensions</b>	14.60 x 4.74 x 2.15 (m)	<b>Builder</b>	Chantiers Beneteau
<b>Built</b>	2012	<b>Cabins</b>	3
<b>Material</b>	GRP	<b>Berths</b>	6
<b>Engine(s)</b>	1 x Yanmar 4JH4-TE diesel	<b>Hp/Kw</b>	75.00 (hp), 55.20 (kw)
<b>Asking price</b>	€ 295.000 (VAT Paid)	<b>Lying</b>	contact sales office

## CONTACT

<b>Sales office</b>	De Valk Costa Blanca	<b>Telephone</b>	+34 96 50 21 569
<b>Address</b>	Costa Blanca Region 03730 Javea Alicante ES	<b>E-mail</b>	costablanca@devalk.nl

## DISCLAIMER

These particulars are given in good faith as supplied but cannot be guaranteed.



## GENERAL

Model	BENETEAU OCEANIS 48
Type	sailing yacht
LOA (m)	14,60
LWL (m)	13,10
Beam (m)	4,74
Draft (m)	2,15
Air draft (m)	23,00
Air draft min (m)	21,30
Year built	2012
Launched	2012
Builder	Chantiers Beneteau
Country	France
Designer	Berret Racoupeau/Nauta Design
Displacement (t)	13,3
CE norm	A
Hull material	GRP
Hull colour	off-white
Hull shape	round-bilged
Keel type	fin keel
Superstructure material	GRP
Deck material	GRP
Deck finish	non-skid moulded in
Superstructure deck finish	non-skid moulded in
Cockpit deck finish	teak
Antifouling (year)	2025
Window material	polycarbonate
Deckhatch	yes
Fuel tank (litre)	polyethylene 200
Fuel tank 2 (litre)	200
Level indicator (fuel tank)	yes



Freshwater tank (litre)	600
Level indicator (freshwater)	yes
Blackwater tank (litre)	polyethylene 160, 2x 80 ltr
Blackwater tank extraction	yes
Wheel steering	cable steering Double
Outside helm position	yes
Emergency tiller	yes
Extra info	Second owner; Spanish matricula paid. EU VAT paid.
Extra info	Airco on board
Extra info	Very well maintained, owners version never chartered

## ACCOMMODATION

Cabins	3
Berths	6
Saloon	Owners' lay-out
Headroom saloon (m)	2
Air-conditioning	reverse cycle airco In front cabin, salon and in one aft cabin
Navigation center	yes
Chart table	Flexible, see (extra) pictures
Aft Cabin	Double
Dinette	yes
Opening door to cockpit	yes
Galley	yes
Countertop	plastic Blue
Sink	stainless steel One full and one half sink
Cooker	calor gas Eno 3 burner
Oven	calor gas Eno
Microwave	Sharp
Fridge	Front and top loader
Hot water system	220V + engine 40 ltr boiler
Water pressure system	electrical



Owners cabin	French bed In front
Bed length (m)	2
Wardrobe	hanging and shelves
Bathroom	en suite Separate shower
Toilet	en suite
Toilet system	electric
Wash basin	in the cabin
Shower	en suite
Guest cabin 1	double bed Sb aft
Bed length (m)	2
Wardrobe	hanging and shelves
Bathroom	shared
Toilet	shared
Toilet system	electric
Wash basin	in the bathroom
Shower	shared With splash screen
Guest cabin 2	double bed Port aft
Bed length (m)	2
Wardrobe	hanging and shelves
Bathroom	shared
Toilet	shared
Toilet system	electric
Wash basin	in the bathroom
Shower	shared With splash screen

## MACHINERY

No of engines	1
Make	Yanmar
Type	4JH4-TE
HP	75
kW	55.20



Fuel	diesel
Year installed	2012
Maximum speed (kn)	8.7
Cruising speed (kn)	7
Consumption (l/hr)	3,5
Range (nm)	750
Engine cooling system	freshwater heat exchanger
Engine controls	bowden cable
Gearbox	mechanical
Bowthruster	electric Max Power
Exhaust	watercooled
Propeller type	fixed
Propeller blades	3
Manual bilge pump	yes
Electric bilge pump	yes
Electrical installation	12/230
Generator	wet exhaust Onan 6 kW 1500 rpm
Running hours generator	375 ca.
Batteries	yes
Start battery	yes
Generator battery	yes
Battery charger	Cristec YPower
Shorepower	with cable

## NAVIGATION

Compass	Plastimo Olympic 135, 2x
Depth sounder/log	Simrad IS 20
Windset	Simrad IS 20
VHF	B&G RS35
Autopilot	Simrad AP24
Rudder angle indicator	On pilot



<b>Radar</b>	Simrad 4G
<b>Radar/GPS/plotter</b>	Simrad NSS 12" out- and Simrad NSS7 inside
<b>AIS transponder</b>	yes
<b>EPIRB</b>	Needs battery check on data
<b>Navigation lights</b>	yes

## EQUIPMENT

<b>Sprayhood</b>	New 2022
<b>Bimini</b>	New 2022
<b>Cockpit cushions</b>	yes
<b>Cockpit table</b>	yes
<b>Bathing platform</b>	Large, see pictures
<b>Boarding ladder</b>	yes
<b>Gangway</b>	Loose
<b>Deck shower</b>	yes
<b>Anchor</b>	Delta 25 kg
<b>Anchor chain</b>	40 mtr plus 40 mtr line
<b>Windlass</b>	electrical
<b>Outboard</b>	Suzuki, 6 hp, 4 stroke
<b>Outboard support</b>	yes
<b>Davits</b>	yes
<b>Deck crane</b>	Support for outboard lifting
<b>Sea railing</b>	wire
<b>Mooring lines</b>	yes
<b>TV</b>	Haier
<b>iPod connection</b>	Fusion
<b>Speakers in salon</b>	Pioneer
<b>Fire extinguisher</b>	Needs data check

## RIGGING

<b>Rigging</b>	fractional Sloop
----------------	------------------



<b>Standing rigging</b>	wire
<b>Brand mast</b>	Sparcraft
<b>Material mast</b>	aluminium
<b>Spreaders</b>	2x
<b>Mainsail</b>	Dacron cruising checked 2025
<b>Stoway mast</b>	Sparcraft
<b>Genoa</b>	Dacron
<b>Genoa furler</b>	Facnor
<b>Reefing System</b>	main in-mast furling
<b>Backstay adjuster</b>	yes
<b>Boomvang</b>	yes
<b>Primary sheet winch</b>	manual Harken H60 2x
<b>Halyard winches</b>	one = electric Harken H46 St
<b>Winchcovers</b>	yes





# BENETEAU OCEANIS 48



# BENETEAU OCEANIS 48

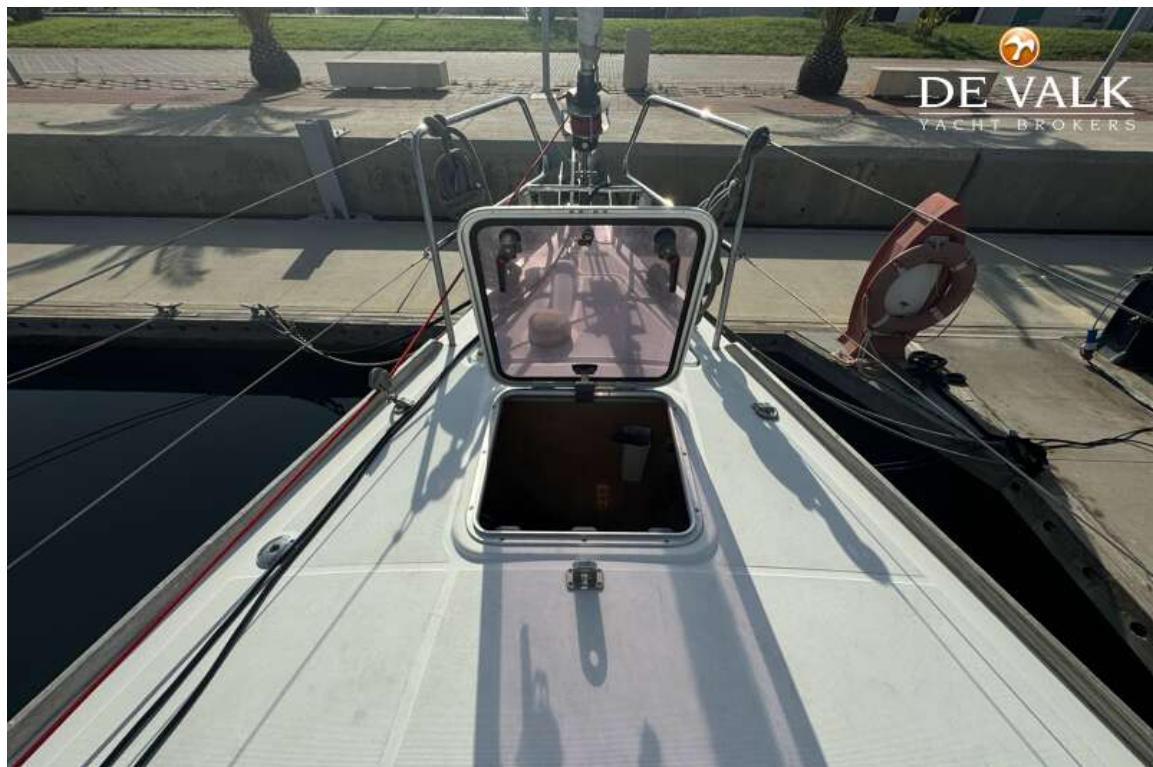




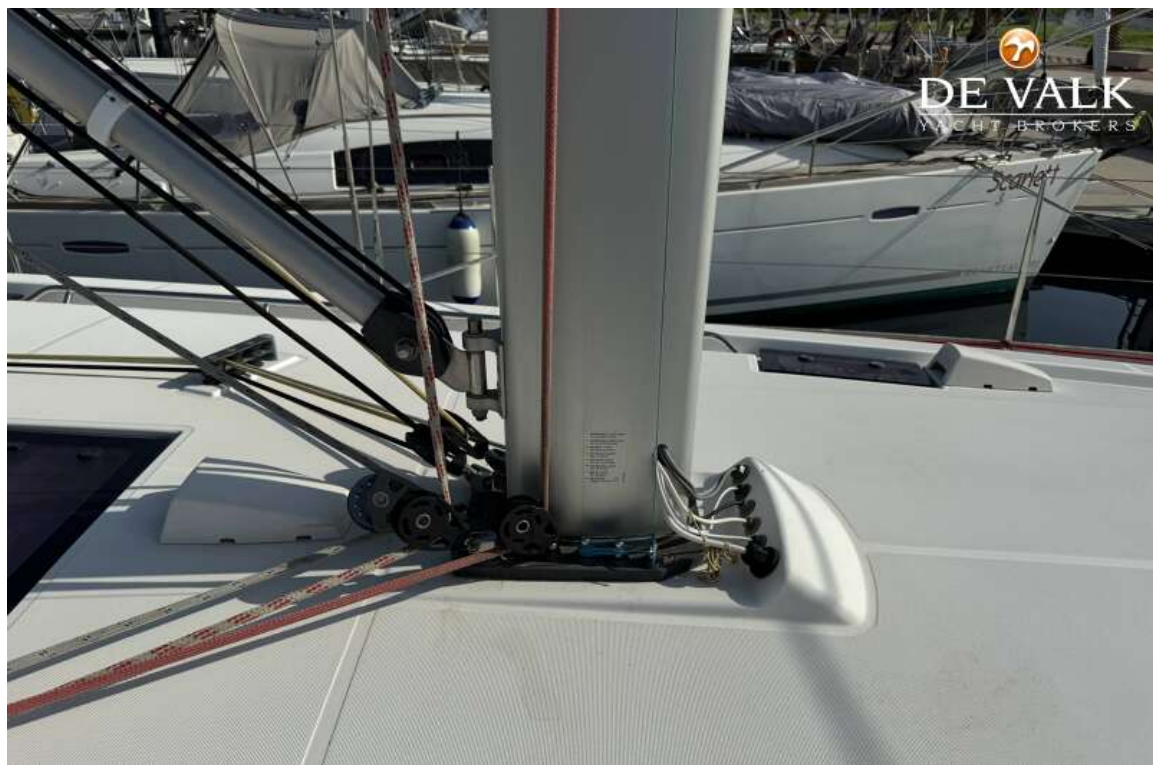
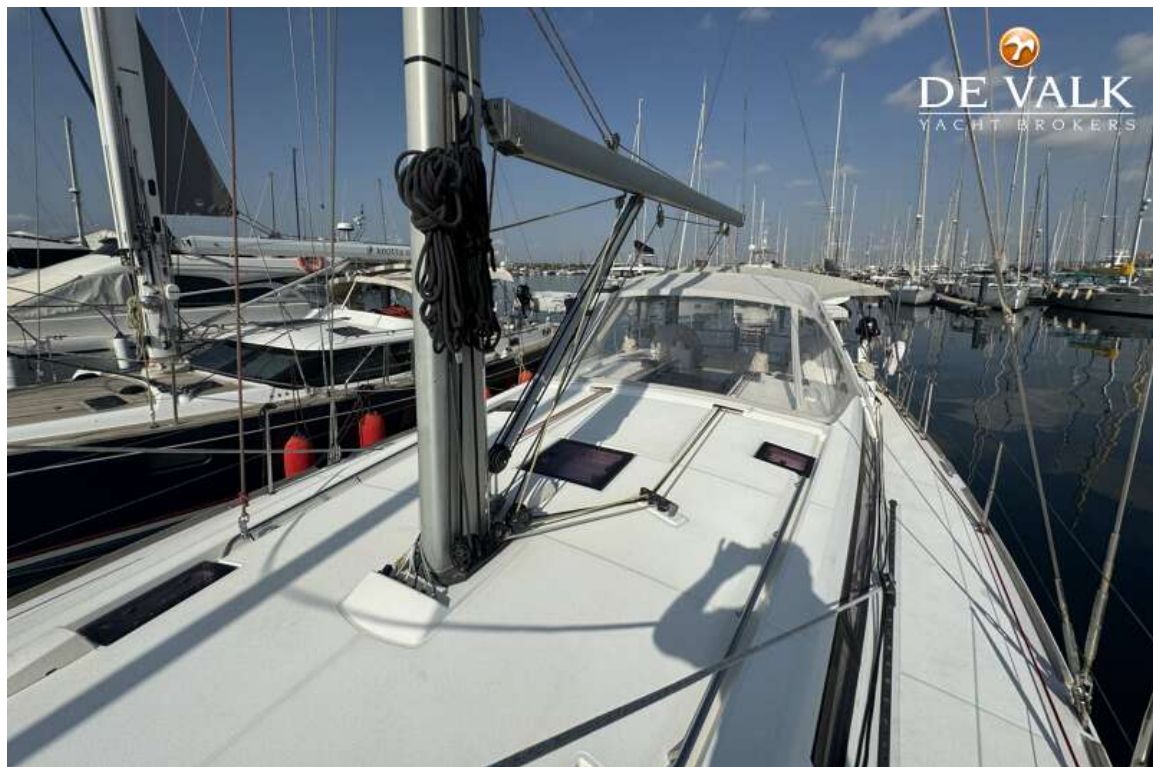
# BENETEAU OCEANIS 48



# BENETEAU OCEANIS 48







# BENETEAU OCEANIS 48





# BENETEAU OCEANIS 48

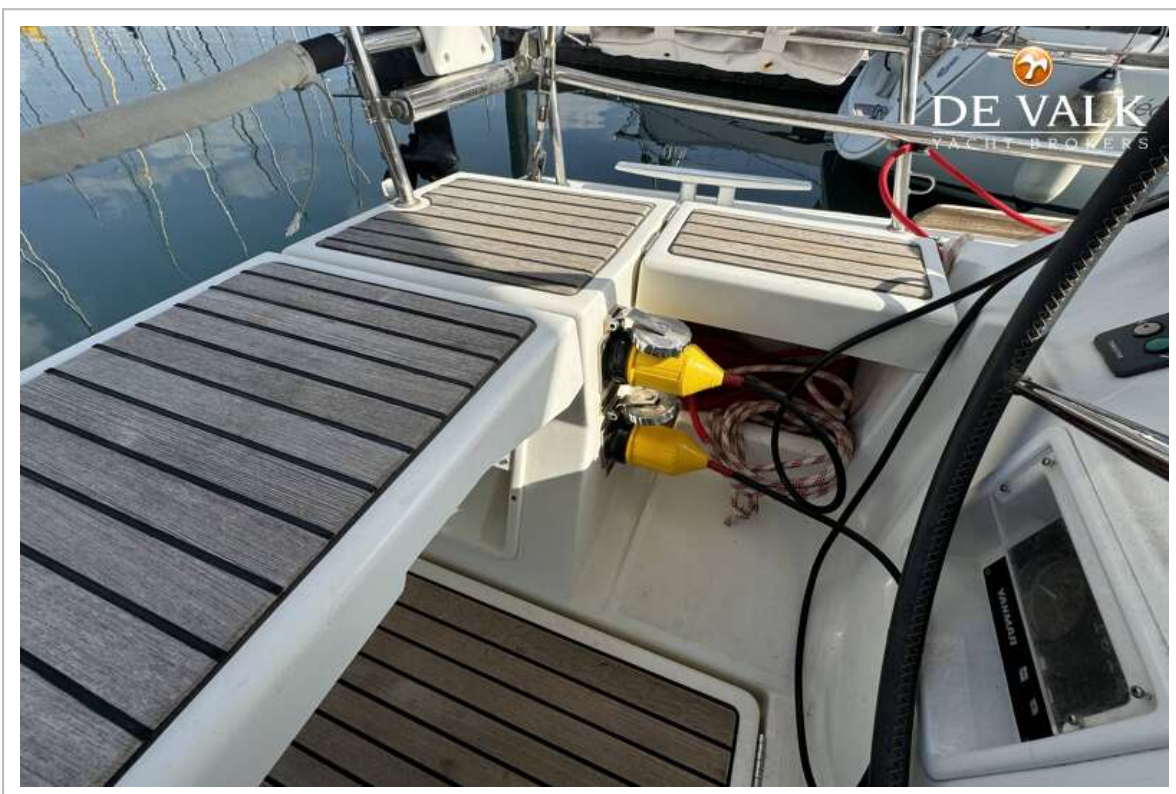


# BENETEAU OCEANIS 48

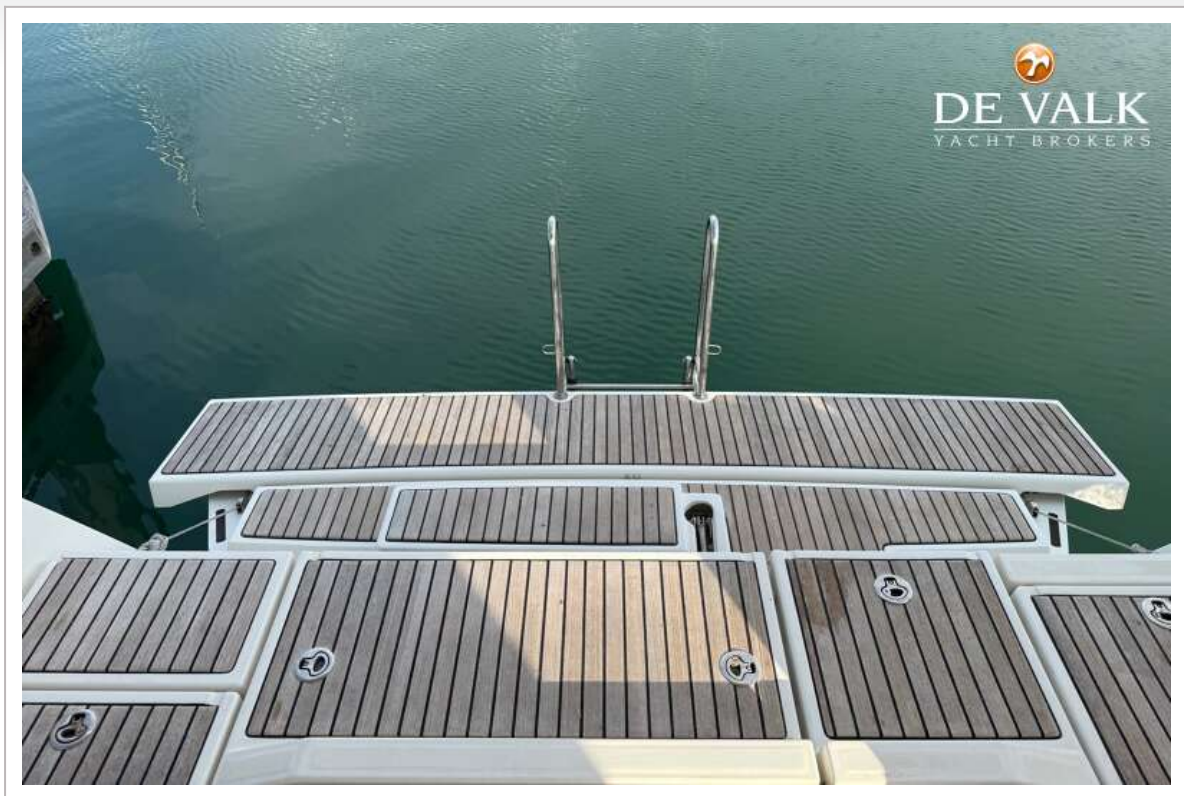




# BENETEAU OCEANIS 48



# BENETEAU OCEANIS 48





# BENETEAU OCEANIS 48



# BENETEAU OCEANIS 48





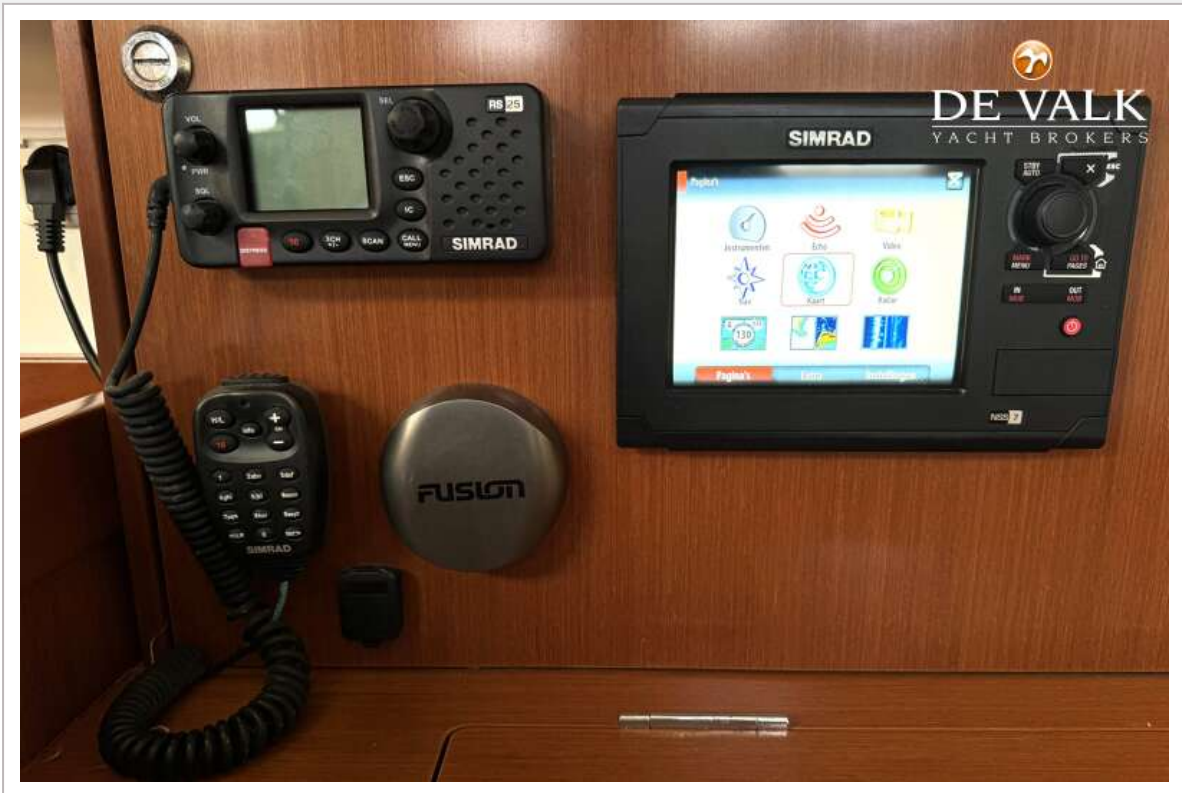
# BENETEAU OCEANIS 48



# BENETEAU OCEANIS 48





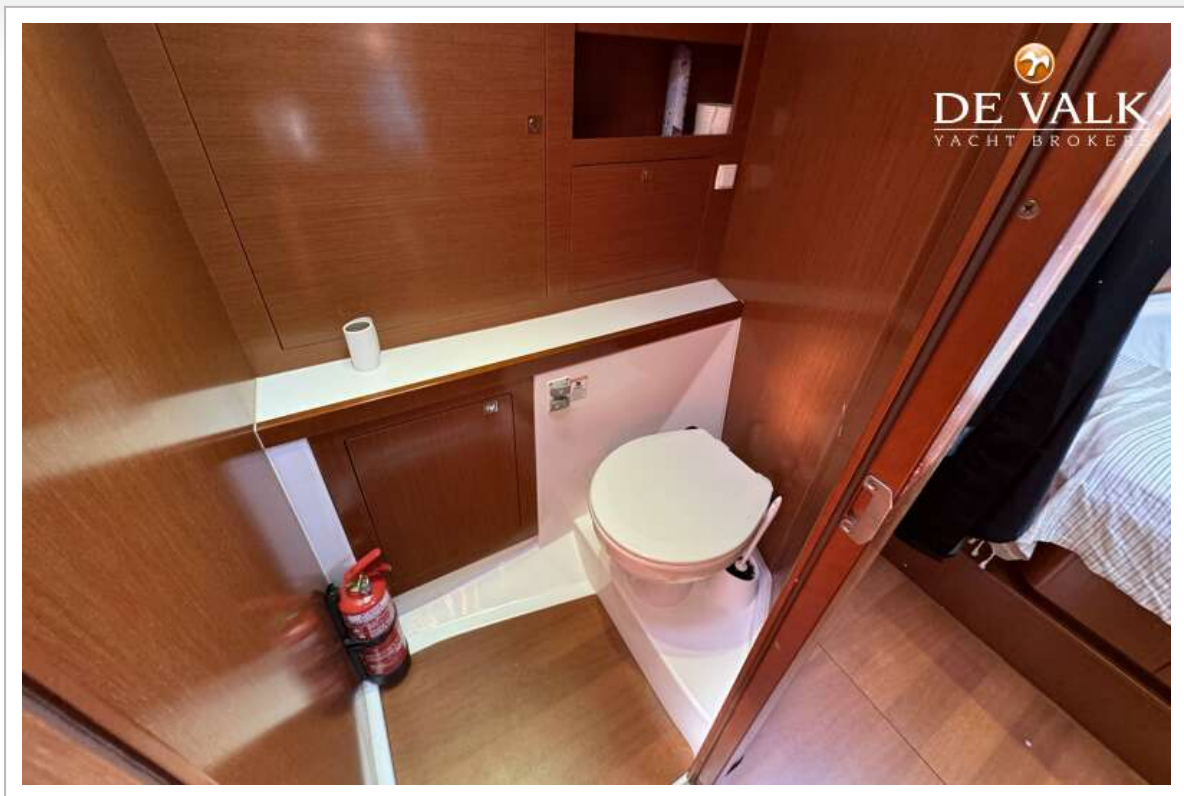


# BENETEAU OCEANIS 48

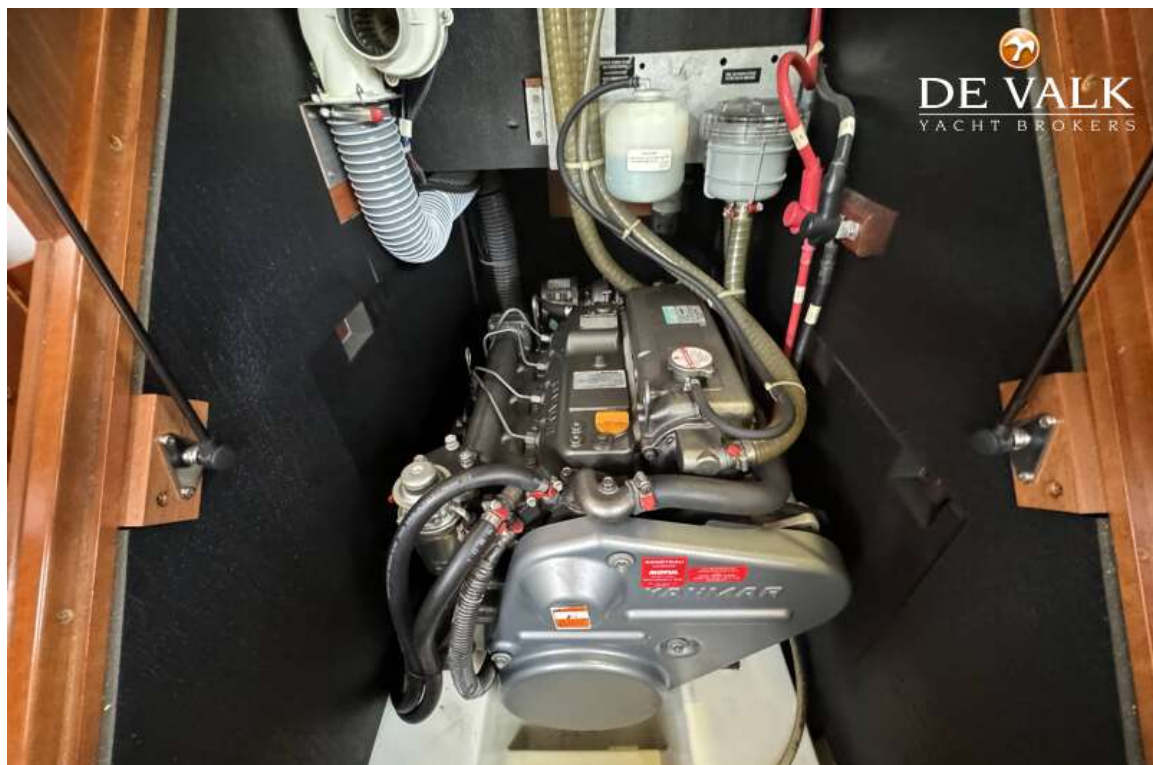




# BENETEAU OCEANIS 48



# BENETEAU OCEANIS 48





# BENETEAU OCEANIS 48

