



## STENTOR SURVEY 15 OC

# STENTOR SURVEY 15 OC

## BROKER'S COMMENTS

This 'Vripack Survey 15 OC' was built by Stentor Yachts in Romania. She is CE-A equipped and therefore an ideal vessel for voyages on inland & offshore waters. The boat has a warm and classic interior. Thanks to the many windows in the superstructure, you have an overview of the entire ship from the steering position. Below deck are the kitchen, dinette, owner's cabin, 2 guest cabins & sanitary facilities.

*Ian Pols*

## SPECIFICATIONS

<b>Dimensions</b>	14.95 x 4.80 x 1,45 / 0.00 (m)	<b>Builder</b>	Stentor Yachts
<b>Built</b>	2003	<b>Cabins</b>	3
<b>Material</b>	Steel	<b>Berths</b>	5
<b>Engine(s)</b>	1 x Perkins-Sabre M215C diesel	<b>Hp/Kw</b>	215.00 (hp), 158.24 (kw)
<b>Asking price</b>	€ 475.000 (VAT Paid)	<b>Lying</b>	at sales office

## CONTACT

<b>Sales office</b>	De Valk Altena	<b>Telephone</b>	+31 162 727211
<b>Address</b>	Keizersveer 3A 4941 TA Raamsdonksveer NL	<b>E-mail</b>	altena@devalk.nl

## DISCLAIMER

These particulars are given in good faith as supplied but cannot be guaranteed.



## GENERAL

Model	STENTOR SURVEY 15 OC
Type	motor yacht
LOA (m)	14,95
Beam (m)	4,80
Draft min (m)	1,45
Air draft min (m)	3,25
Year built	2003
Builder	Stentor Yachts
Country	Romania
Designer	Vripack Yachting International
Displacement (t)	30
Ballast (tonnes)	cast iron Ca. 1,2
CE norm	A
Hull material	steel
Hull colour	off-white
Hull thickness (mm)	5
Hull shape	multi hard chine
Superstructure material	steel
Superstructure (mm)	4
Deck plate thickness (mm)	4
Rubbing strake	stainless steel
Deck material	steel
Deck finish	non-skid moulded in Aluminium
Superstructure deck finish	teak
Window frame	aluminium
Window material	double glazing New 2024
Deckhatch	Aluminium
Mast can be lowered	yes
Fuel tank (litre)	steel 4450
Level indicator (fuel tank)	yes



Fuel daytank (litre)	steel 100
Level indicator (daytank)	yes
Freshwater tank (litre)	stainless steel 1350
Level indicator (freshwater)	yes
Blackwater tank (litre)	stainless steel 750
Level indicator (blackwater)	yes
Wheel steering	hydraulic

## ACCOMMODATION

Cabins	3
Berths	5
Interior	mahogany
Floor	wood Mahonie
Open cockpit	yes
Heating	central heating Kabola B8 boiler
Navigation center	yes
Dining room	yes
Dinette	yes
Galley	yes
Countertop	corian
Sink	stainless steel
Cooker	electric
Extractor	yes
Microwave/oven combi	yes
Fridge	yes
Freezer	yes
Water pressure system	electrical
Owners cabin	yes
Bathroom	en suite
Toilet	en suite
Toilet system	electric



Wash basin	at the toilet
Shower	en suite
Guest cabin 1	bunk bed
Toilet	separate
Toilet system	electric
Wash basin	at the toilet
Guest cabin 2	single bed
Washing machine/dryer combi	Candy (in de machinekamer)

## MACHINERY

No of engines	1
Make	Perkins-Sabre
Type	M215C
HP	215
kW	158.24
Fuel	diesel
Engine cooling system	freshwater heat exchanger
Gearbox	hydraulic ZF, type 63 V
Bowthruster	electric Maxpower
Sternthruster	electric Maxpower
Propeller type	fixed
Propeller blades	4
Propeller shaft material	stainless steel
Shaft lubrication	water
Electric bilge pump	3x
Bilge alarm	yes
Electrical installation	220V, 24V, 12V
Generator	Fischer Panda
Battery monitor	Mastervolt
Battery charger	yes
Inverter	Victron Phoenix 24/3000



Shorepower	with cable
------------	------------

## NAVIGATION

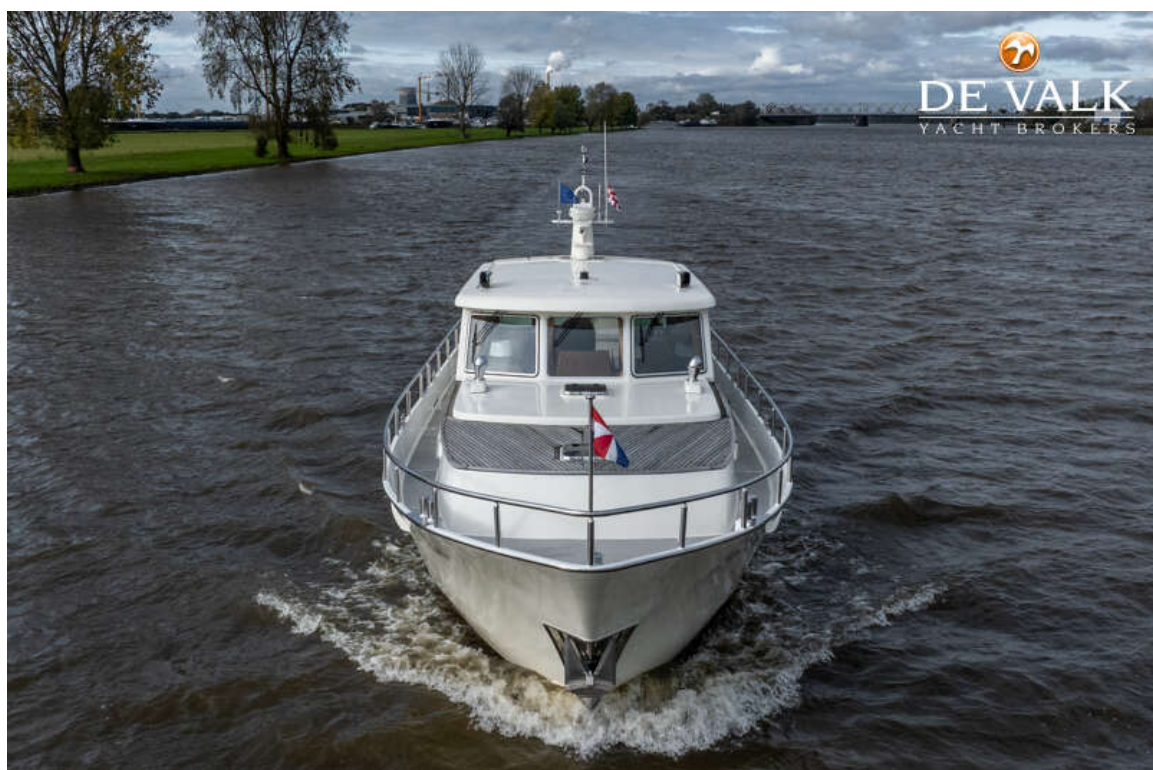
Compass	Raymarine
Depth sounder	Raymarine
Log	Raymarine
Autopilot	ComNav 1101
Rudder angle indicator	ComNav
GPS	Raymarine
Plotter	Raymarine
Navigation lights	yes

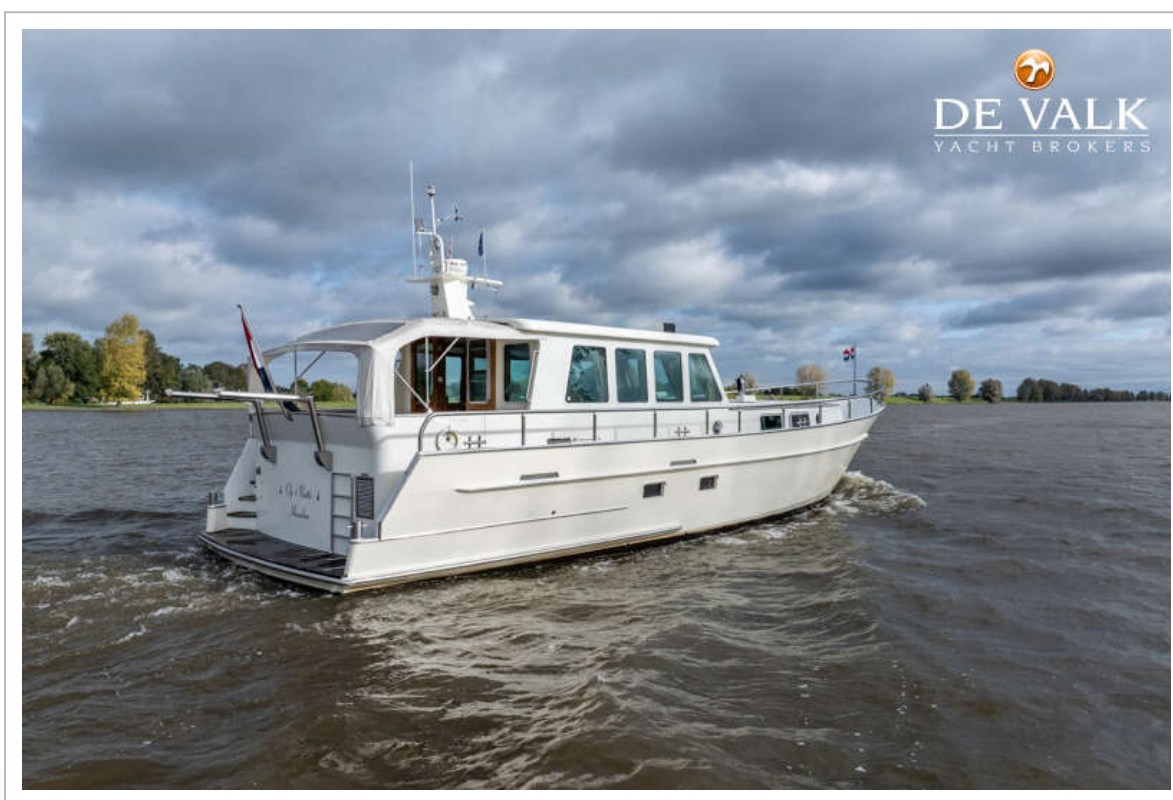
## EQUIPMENT

Sprayhood	yes
Bathing platform	yes
Anchor	yes
Anchor chain	yes
Windlass	yes
Davits	yes
Sea railing	stainless steel
Rope cutter	yes
Wiper	yes
Horn	yes
Fenders	yes
Mooring lines	yes
Fire extinguisher	yes











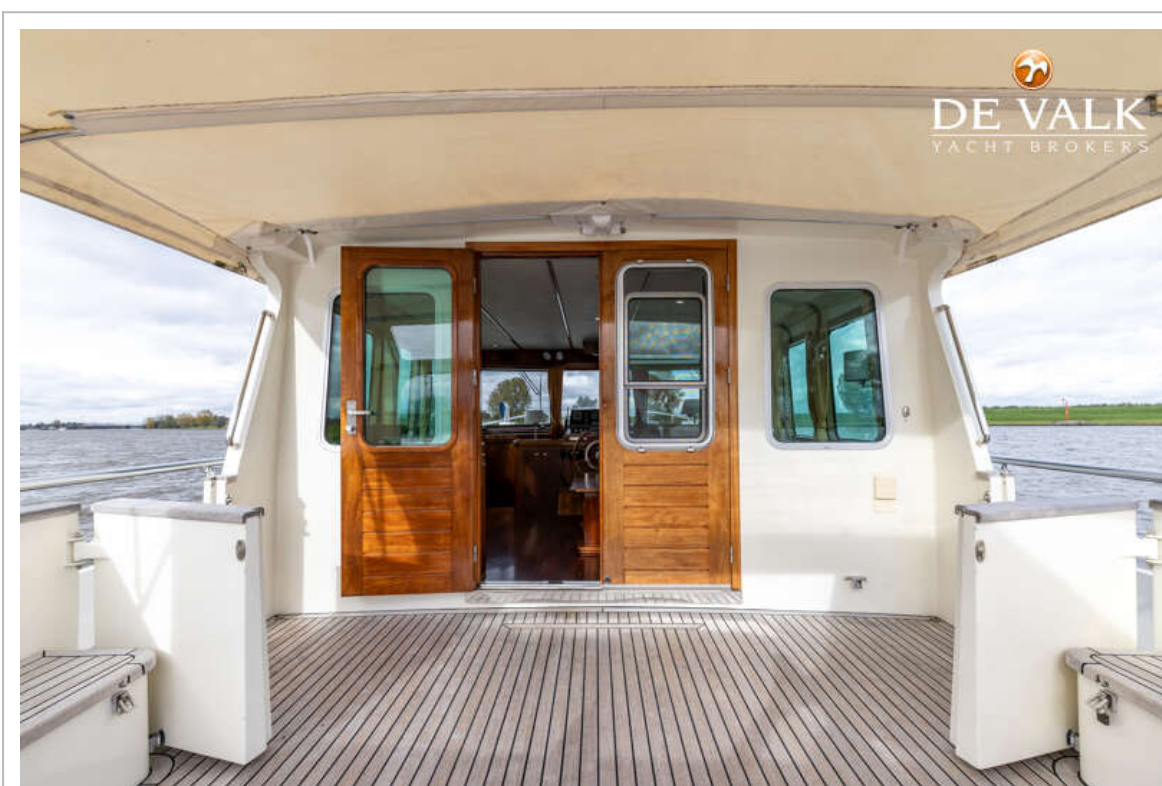




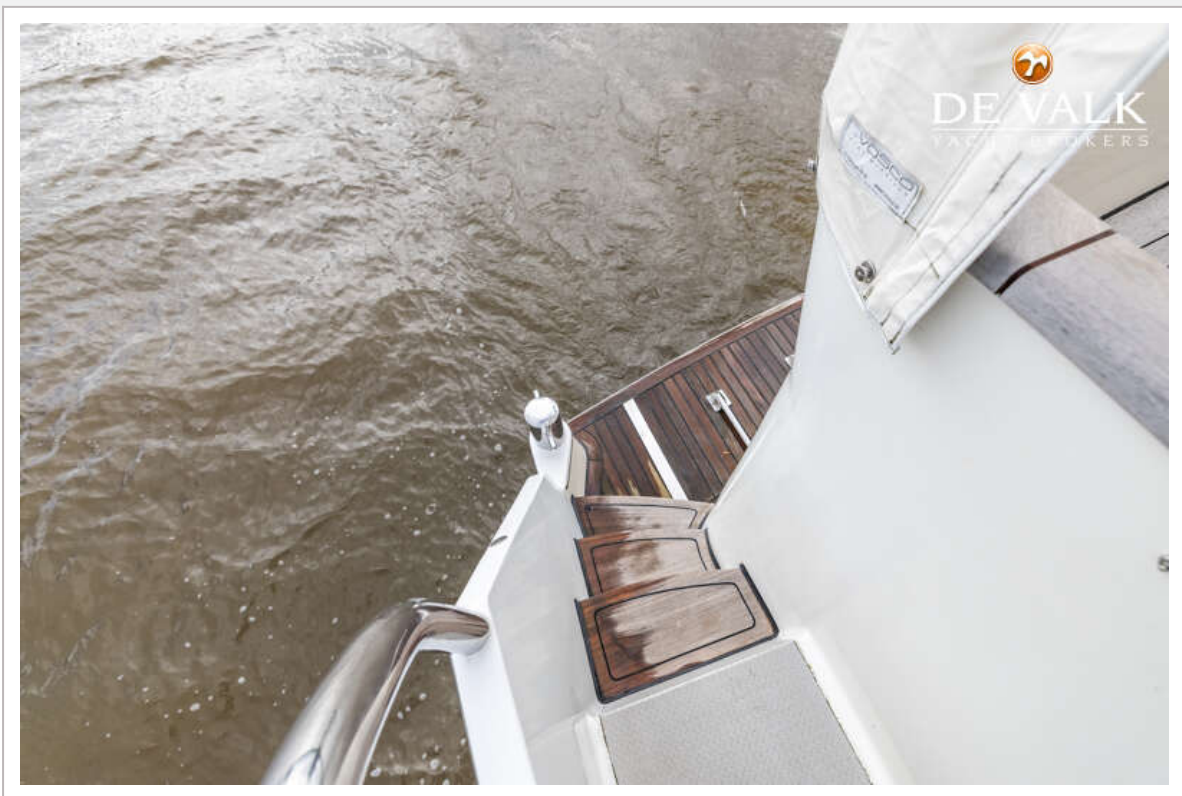




## STENTOR SURVEY 15 OC





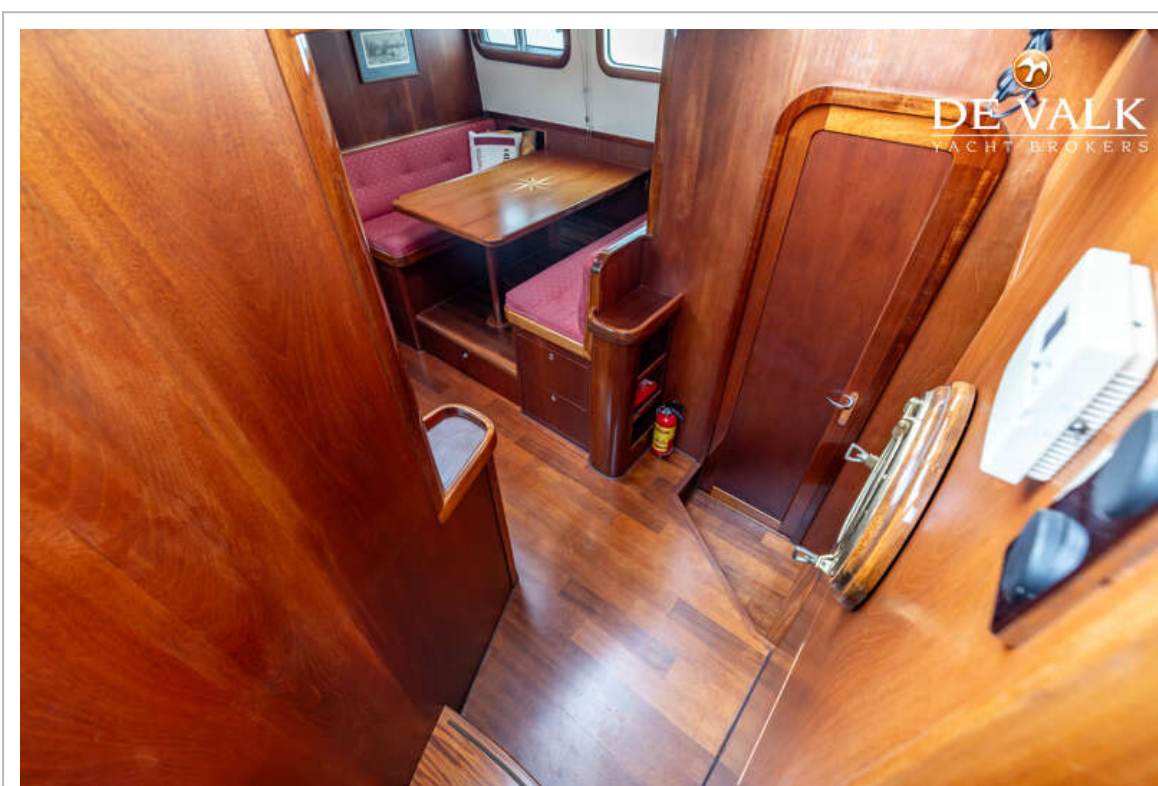
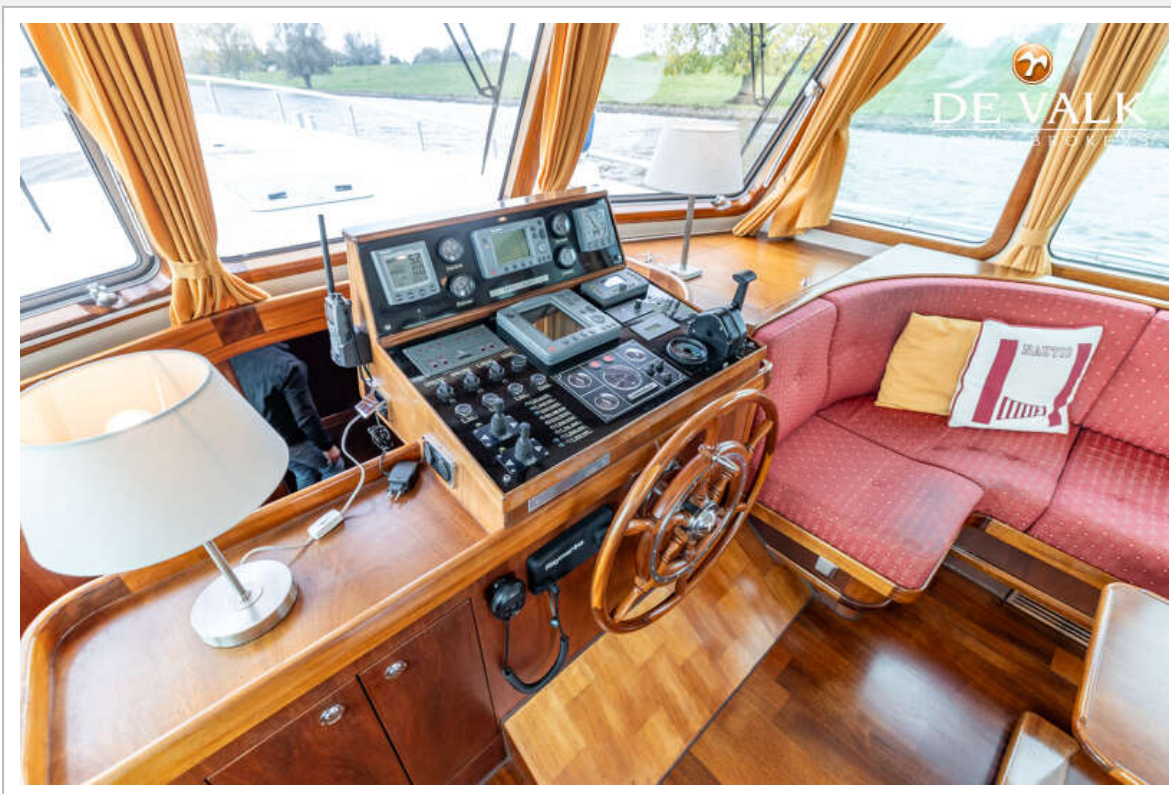


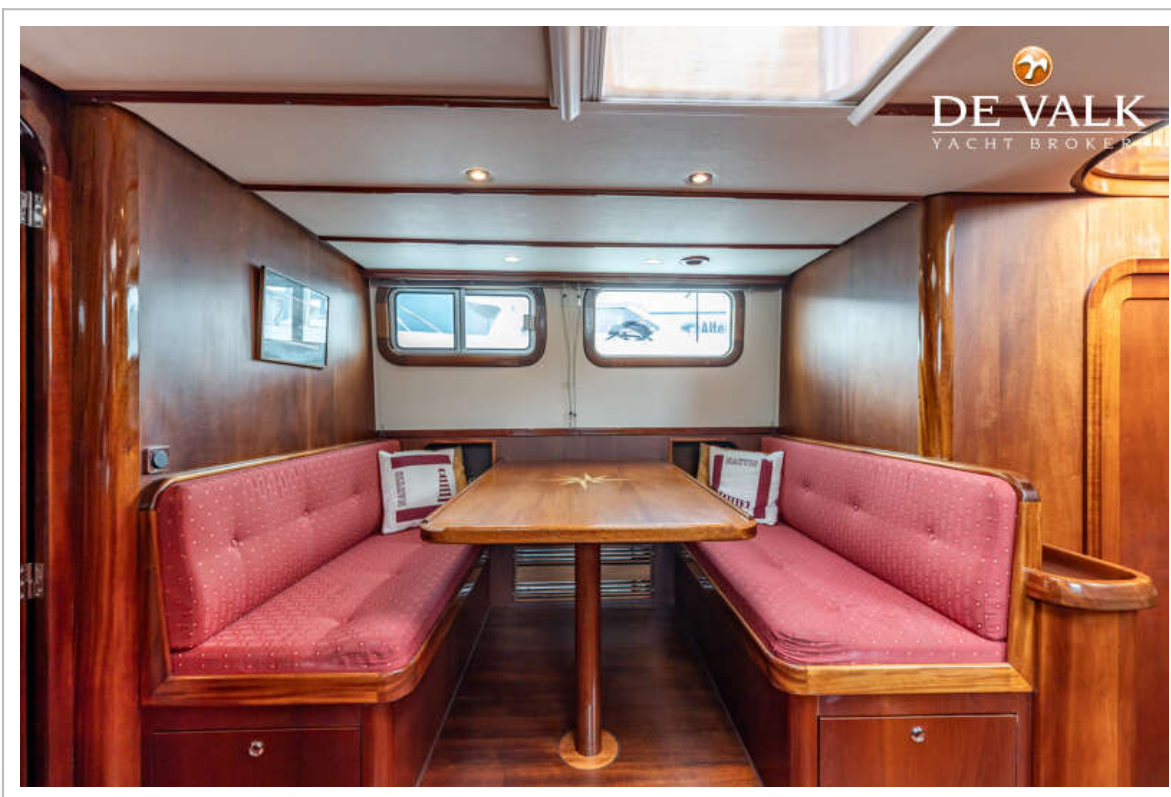






# STENTOR SURVEY 15 OC







## STENTOR SURVEY 15 OC

