



## BENETEAU OCEANIS CLIPPER 411



# BENETEAU OCEANIS CLIPPER 411

## BROKER'S COMMENTS

An absolute superb kept Oceanis Clipper 411; she comes realistically priced from 2nd owner. Amalia I was only private sailed, never chartered. Australian flag. This was an original 4 cabin later transferred into 3 cabins with an amazing spacious owners' cabin as result. Just enjoy the created "lounge area" (ex bunkbed), a comfortable bonus on this size yachts. New rigging 2014, new running rigging 2024, nice set of sails. Copper coating just serviced. Prop-speed on propellor, engine done. With full inventory, very well maintained, she makes you feel at home after your first step on board.

*Willem Koopmans*

## SPECIFICATIONS

<b>Dimensions</b>	12.34 x 3.95 x 1.76 (m)	<b>Builder</b>	Chantiers Beneteau
<b>Built</b>	2001	<b>Cabins</b>	3
<b>Material</b>	GRP	<b>Berths</b>	7
<b>Engine(s)</b>	1 x Yanmar 4JH3E diesel	<b>Hp/Kw</b>	56.00 (hp), 41.22 (kw)
<b>Asking price</b>	€ 75.000 (VAT Not paid)	<b>Lying</b>	contact sales office

## CONTACT

<b>Sales office</b>	De Valk Costa Blanca	<b>Telephone</b>	+34 96 50 21 569
<b>Address</b>	Costa Blanca Region 03730 Javea Alicante ES	<b>E-mail</b>	costablanca@devalk.nl

## DISCLAIMER

These particulars are given in good faith as supplied but cannot be guaranteed.



# BENETEAU OCEANIS CLIPPER 411

## GENERAL

Model	BENETEAU OCEANIS CLIPPER 411
Type	sailing yacht
LOA (m)	12,34
LWL (m)	11,25
Beam (m)	3,95
Draft (m)	1,76
Year built	2001
Launched	2002
Builder	Chantiers Beneteau
Country	France
Designer	Jean Marie Finot
Displacement (t)	7,8
Ballast (tonnes)	2,495
CE norm	A
Hull material	GRP
Hull colour	off-white
Hull shape	round-bilged
Keel type	fin keel Sand blasted and 4 layers of Juton Epoxy
Superstructure material	GRP
Rubbing strake	rubber
Deck material	GRP
Deck finish	non-skid moulded in
Superstructure deck finish	non-skid moulded in
Cockpit deck finish	teak
Antifouling (year)	2022 Coppercoat, lasts 10 years, July 2025 cleaned and retouched
Dorades	yes
Deckhatch	yes
Fuel tank (litre)	polyethylene 150
Level indicator (fuel tank)	yes
Freshwater tank (litre)	polyethylene 1x 300 front + 1x 250 aft



# BENETEAU OCEANIS CLIPPER 411

Level indicator (freshwater)	yes
Blackwater tank (litre)	GRP 100 with Macerator pump TMC 06205
Wheel steering	cable steering New bearing July 2025
Emergency tiller	yes
Extra info	Originally 4 cabin, rebuilt to 3 cabin with a unique master cabin
Extra info	No charter history, privately sailed, first owner had big family
Extra info	Turn-key yacht, absolutely ready to sail!

## ACCOMMODATION

Cabins	3
Berths	7
Layout	Master cabin front with large relax "lounge seat"/ third berth
Floor	woodprint
Saloon	With long galley
Headroom saloon (m)	2
Navigation center	yes
Chart table	yes
Aft Cabin	Double
Dinette	yes
Dinette to convert into berth	yes
Galley	yes
Countertop	White, laminated
Sink	stainless steel Double
Cooker	calor gas ENO 2 burner, installed 2020
Oven	ENO, installed 2020
Fridge	Frigoboat Master 180 ltr
Freezer	Small compartment in fridge
Hot water system	220V + engine Boiler 50 ltr
Water pressure system	electrical
Manual and/or foot pump	Seawater
Owners cabin	double bed Plus single berth/sofa



# BENETEAU OCEANIS CLIPPER 411

Bed length (m)	2
Wardrobe	hanging and shelves
Bathroom	en suite
Toilet	en suite
Toilet system	manual
Wash basin	in the bathroom
Shower	en suite
Guest cabin 1	double bed Sb side
Bed length (m)	2
Wardrobe	hanging and shelves
Bathroom	shared
Toilet	shared
Toilet system	manual
Wash basin	in the bathroom
Shower	shared
Guest cabin 2	double bed Port side
Bed length (m)	2
Wardrobe	hanging and shelves
Bathroom	shared
Toilet	shared
Toilet system	manual
Wash basin	in the bathroom
Shower	shared
Extra info	Filtered water tap under sink galley.
Extra info	Fantastic owners cabin, if needed 9 persons can sleep on board

## MACHINERY

No of engines	1
Make	Yanmar
Type	4JH3E
HP	56



# BENETEAU OCEANIS CLIPPER 411

<b>kW</b>	41.22
<b>Fuel</b>	diesel
<b>Year installed</b>	2001
<b>Year of overhaul</b>	Recently serviced: new oil, coolant, filters
<b>Maximum speed (kn)</b>	8,2
<b>Cruising speed (kn)</b>	6,5
<b>Consumption (l/hr)</b>	3
<b>Range (nm)</b>	400
<b>Engine hours</b>	3380
<b>Engine cooling system</b>	freshwater heat exchanger
<b>Drive</b>	shaft
<b>Shaft seal</b>	Replaced July 2025
<b>Engine controls</b>	bowden cable
<b>Exhaust</b>	watercooled New hose 2023
<b>Propeller type</b>	fixed
<b>Propeller blades</b>	3x, painted 2025
<b>Propeller shaft material</b>	stainless steel
<b>Shaft lubrication</b>	water New 2025 zinc anodes shaft and prop
<b>Manual bilge pump</b>	To be operated from cockpit
<b>Electric bilge pump</b>	2x Sea flo 750 Gph and 1500 Gph
<b>Electrical installation</b>	12/230
<b>Batteries</b>	2x AGM 240 Ah each, 2020
<b>Start battery</b>	HD 95 Ah, 2022
<b>Battery monitor</b>	Renorgy
<b>Battery charger</b>	SBC 250 NRg 25 Amp
<b>Inverter</b>	1000 Watt
<b>Battery charger/inverter</b>	yes
<b>Solar panel</b>	2 panels 200 Watt with Victron MPPT 75/15
<b>Shorepower</b>	With various shore power plugs

## NAVIGATION



# BENETEAU OCEANIS CLIPPER 411

Compass	yes
Electric compass	On Raymarine
Depth sounder/log	yes
Windset	Raymarine ST 60
VHF	Sailor DSC
VHF handheld	Icom IC-M93D
Autopilot	Raymarine EV 200, new 2020
Rudder angle indicator	On pilot
Plotter	Lowrance HDS gen3, with Eu C-map charts
AIS transponder	Icom MA500TR
EPIRB	Global Fix
Extra info	Paper charts Med and pilot books

## EQUIPMENT

Sprayhood	yes
Bimini	yes
Cockpit cushions	yes
Cockpit table	yes
Bathing platform	yes
Boarding ladder	stainless steel
Deck shower	yes
Anchor	20 kg Main spade S 100, new 2022
Anchor chain	50 mtr 8 mm galvanised
Anchor 2	Danforth 16 kg
Anchor chain	Chain and rope
Windlass	Lofrance Tigre 1000, deck control and wired remote
Dinghy	NauTend 2,5 m
Outboard	Yamaha Malta 3 hp
Outboard support	Teak
Life raft	New 2024
Life raft (pers)	4



Lifejackets	yes
Horn	yes
Binocular	yes
Radar reflector	yes
Fenders	yes
Mooring lines	yes
Spare parts	Loaded
Cockpit speakers	Kenwood
Speakers in salon	yes
Clock - barometer	yes
Fire extinguisher	yes
Latest extinguisher survey	Needs data check
Extra info	Australian flagged vessel, no Vat paid, overall beautiful state!
Extra info	She comes loaded with useful equip and parts, all can be removed

## RIGGING

Rigging	sloop
Standing rigging	wire Stainless steel, replaced 2014
Brand mast	Z-Spar
Material mast	aluminium
Spreaders	2
Keel stepped mast	Deck stepped, stainless steel compression post in salon
Mainsail	In mast 2016, UK Sails, 28 m2
Stoway mast	yes
Genoa	UK sails 2016 - 53 m2
Genoa furler	Facnor
A-symetric spi	With sock
Reefing System	main in-mast furling
Backstay adjuster	Double backstay
Boomvang	gasspring





Primary sheet winch	Lewmar ST 48 Self ailing
Secondary sheet winch	Lewmar ST 30
Extra info	Old mainsail as spare
Extra info	New running rigging 2024



# BENETEAU OCEANIS CLIPPER 411



# BENETEAU OCEANIS CLIPPER 411





# BENETEAU OCEANIS CLIPPER 411



# BENETEAU OCEANIS CLIPPER 411



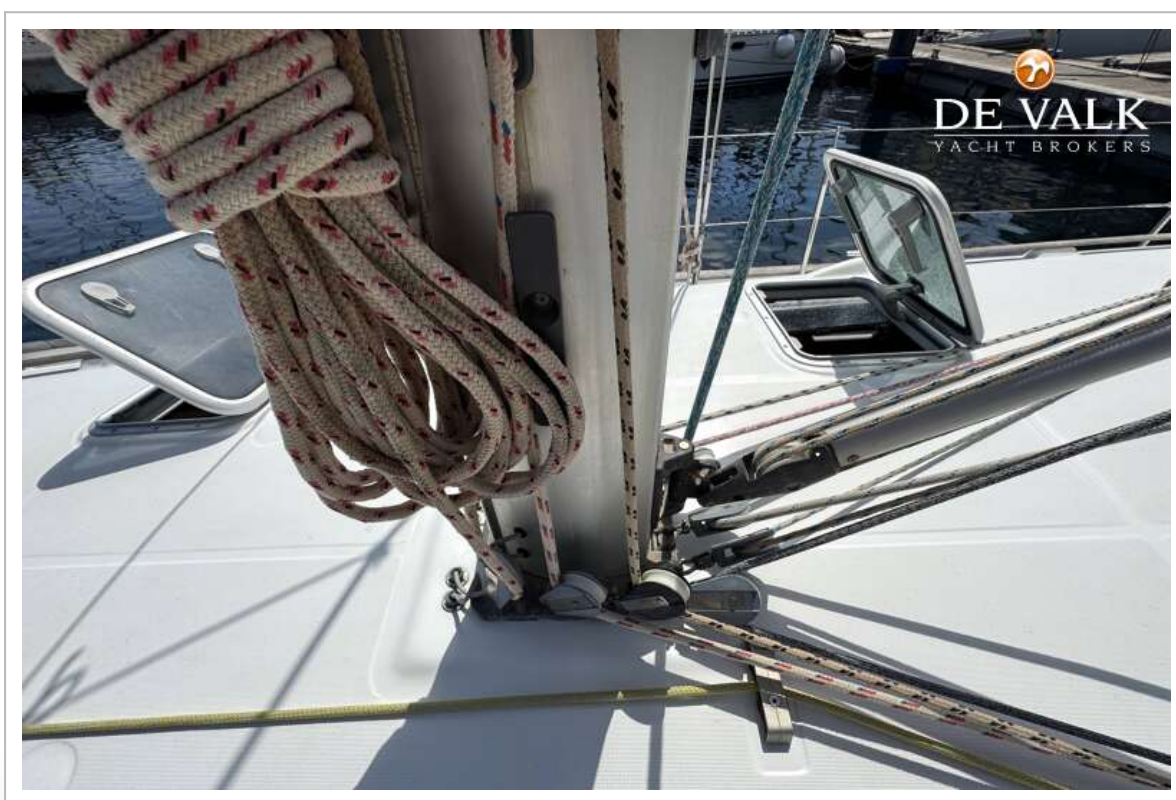
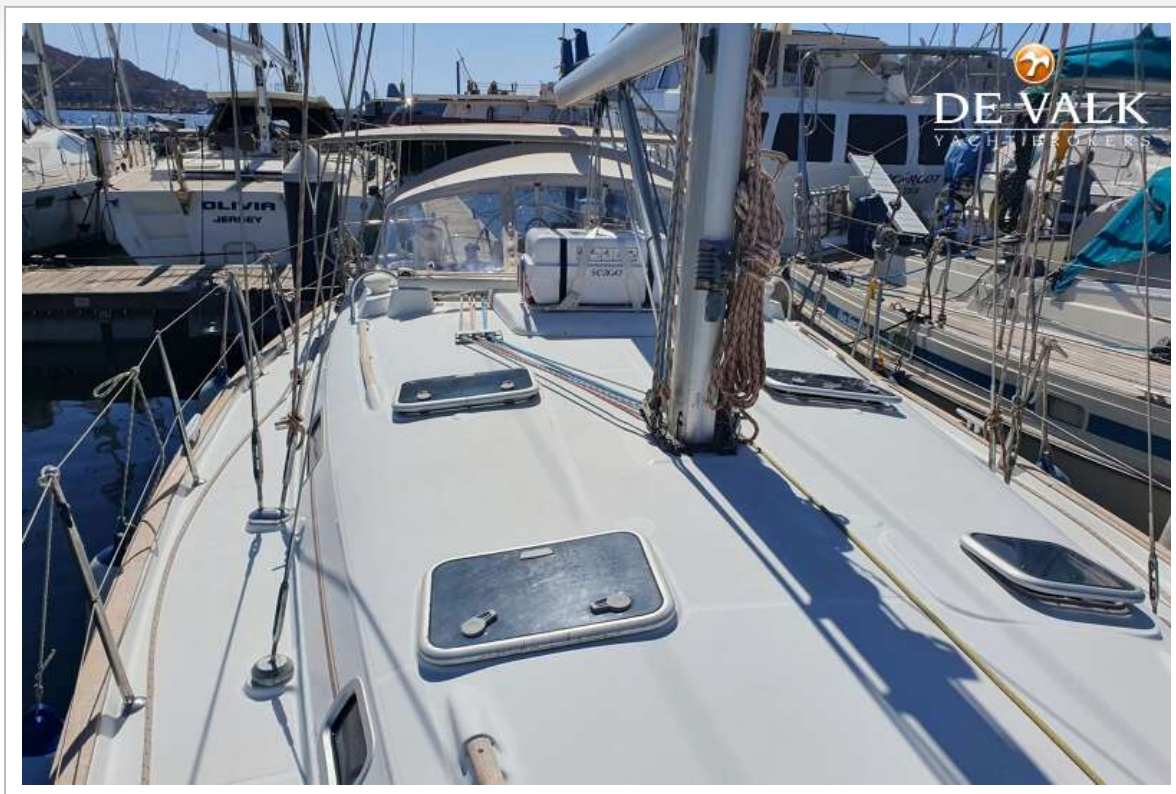


# BENETEAU OCEANIS CLIPPER 411



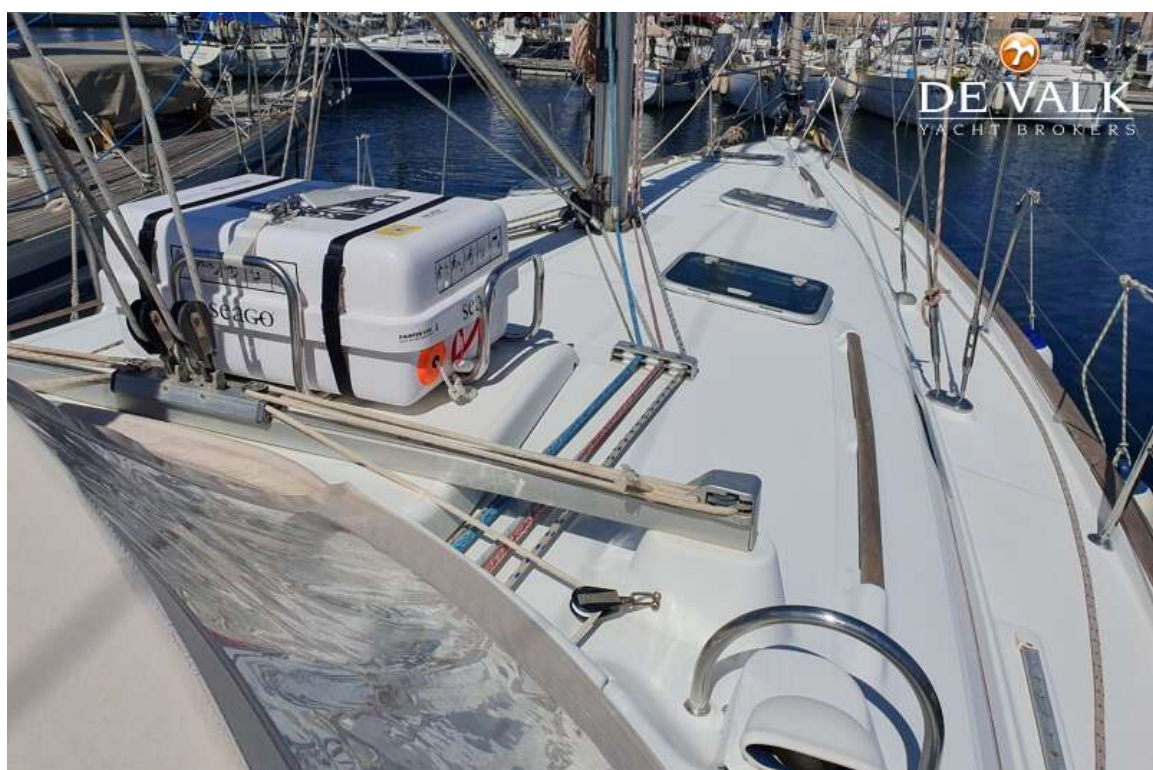


# BENETEAU OCEANIS CLIPPER 411



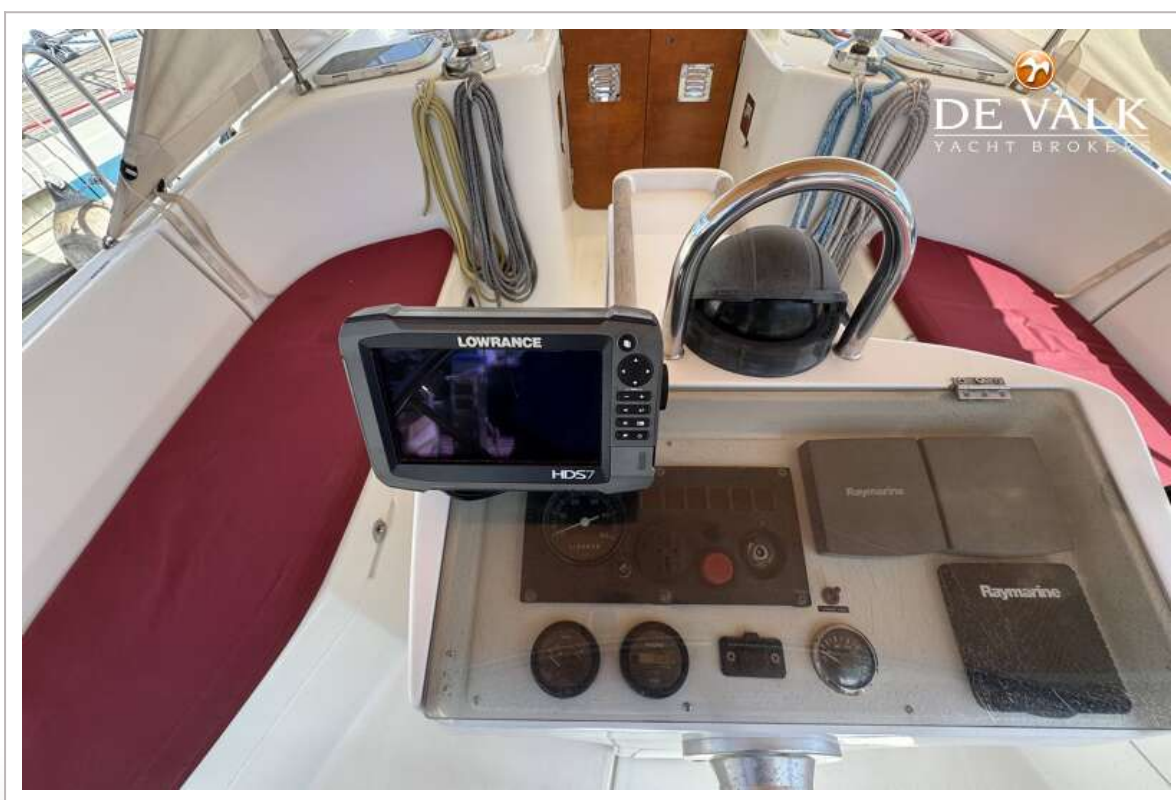


# BENETEAU OCEANIS CLIPPER 411

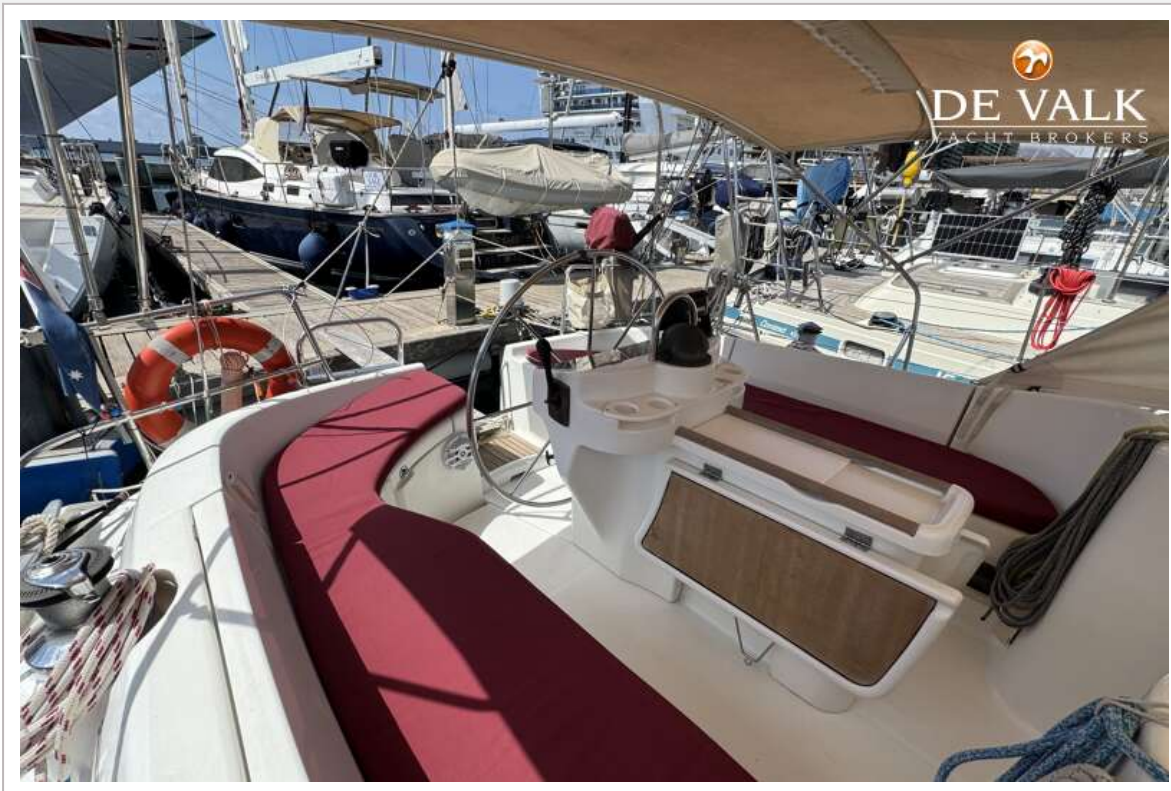




# BENETEAU OCEANIS CLIPPER 411



# BENETEAU OCEANIS CLIPPER 411





# BENETEAU OCEANIS CLIPPER 411



# BENETEAU OCEANIS CLIPPER 411





# BENETEAU OCEANIS CLIPPER 411



# BENETEAU OCEANIS CLIPPER 411





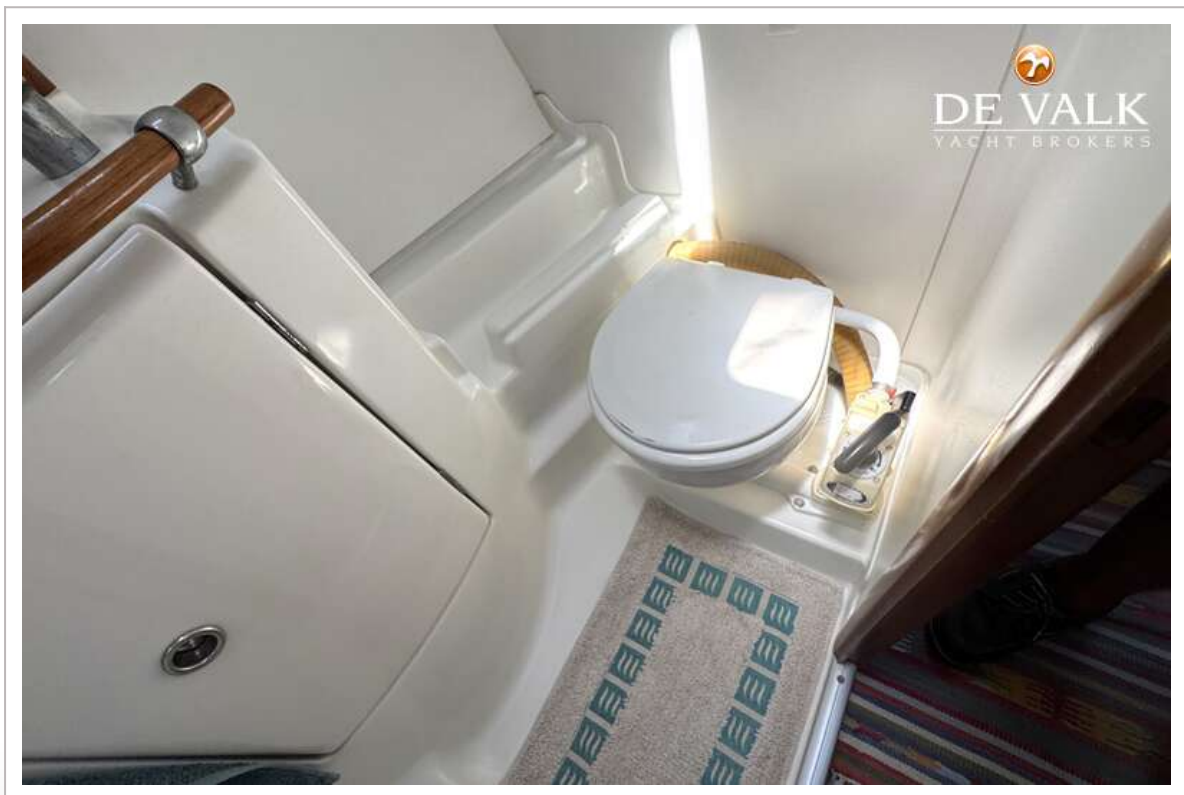
# BENETEAU OCEANIS CLIPPER 411



# BENETEAU OCEANIS CLIPPER 411







# BENETEAU OCEANIS CLIPPER 411

