



DE VALK
YACHT BROKERS



BIRCHWOOD CRUSADER 340 AC



DE VALK
YACHT BROKERS

BIRCHWOOD CRUSADER 340 AC

BROKER'S COMMENTS

The Birchwood Crusader 340 AC "KOKOMO" is an excellently maintained motor yacht, which is in neat condition and ready for new adventures on the water. This seaworthy yacht is equipped with two powerful and reliable diesel engines, making it not only efficient, but also suitable for longer trips on both inland and offshore waters. Thanks to the bow thruster, maneuvering in harbors and narrow waters is easy and comfortable. "KOKOMO" combines functionality with style and is a perfect choice for both starting and experienced sailors.

Jochem Heijermans

SPECIFICATIONS

Dimensions	10.33 x 3.37 x 0.95 (m)	Builder	: Birchwood Boat Company Ltd.
Built	2002	Cabins	2
Material	GRP	Berths	4
Engine(s)	2 x Yanmar 4LHA - DTA diesel	Hp/Kw	2 x 190.00 (hp), 139.84 (kw)
Asking price	sold (VAT)	Lying	elsewhere / Not at sales office

CONTACT

Sales office	De Valk Belgium	Telephone	+32 586 80 218
Address	1401 PT Nieuwpoort BE	E-mail	belgium@devalk.nl

DISCLAIMER

These particulars are given in good faith as supplied but cannot be guaranteed.



BIRCHWOOD CRUSADER 340 AC

GENERAL

Model	BIRCHWOOD CRUSADER 340 AC
Type	motor yacht
LOA (m)	10,33
Beam (m)	3,37
Draft (m)	0,95
Headroom (m)	2,00
Year built	2002
Builder	: Birchwood Boat Company Ltd.
Country	United Kingdom
Displacement (t)	6,5
CE norm	B
Hull material	GRP
Hull colour	white
Hull shape	deep-V
Superstructure material	GRP
Rubbing strake	plastic
Deck material	GRP
Deck finish	non-skid moulded in
Superstructure deck finish	non-skid moulded in
Cockpit deck finish	non-skid moulded in
Antifouling (year)	05/2023
Window frame	aluminium
Window material	tempered glass
Deckhatch	yes
Portholes	yes
Fuel tank (litre)	stainless steel 2x 341
Level indicator (fuel tank)	yes
Freshwater tank (litre)	stainless steel 2x 140
Blackwater tank (litre)	polyethylene 1x 82
Wheel steering	hydraulic



Inside helm position	yes
Outside helm position	yes

ACCOMMODATION

Cabins	2
Berths	4
Floor	carpet
Aft deck	yes
Saloon	yes
Headroom saloon (m)	2,00
Heating	diesel ducted hot air Webasto
Dinette	yes
Dinette to convert into berth	yes
Sliding door to aft deck	yes
Galley	yes
Countertop	plastic
Sink	corian
Cooker	calor gas 4 burner
Microwave	yes
Fridge	yes
Hot water system	220V + engine
Water pressure system	electrical
Owners cabin	double bed
Bed length (m)	2,00 x 1,40
Wardrobe	hanging/drawers/shelves
Bathroom	en suite Walk-in closet (toilet disassembled)
Bathroom	en suite
Toilet	shared
Toilet system	manual
Wash basin	in the bathroom
Shower	en suite



BIRCHWOOD CRUSADER 340 AC

MACHINERY

No of engines	2
Make	Yanmar
Type	4LHA - DTA
HP	190
kW	139.84
Fuel	diesel
Year installed	2002
Maximum speed (kn)	18
Cruising speed (kn)	15
Engine hours	975
Engine cooling system	freshwater heat exchanger
Drive	shaft
Engine controls	bowden cable
Gearbox	hydraulic
Bowthruster	electric Sidepower
Exhaust	watercooled
Shaft lubrication	water
Electrical installation	12V/230V
Batteries	4x (07/2021)
Start battery	yes
Battery charger	yes
Inverter	yes
Diode battery combiners	yes
Shorepower	yes
Trimtabs	yes

NAVIGATION

Compass	yes
Electric compass	Autopilot
Depth sounder	Lowrance DS5x



BIRCHWOOD CRUSADER 340 AC

VHF	Raymarine
Autopilot	Raymarine
Rudder angle indicator	Raymarine on autopilot
Plotter/GPS	Lowrance HDS8M
AIS transceiver	yes
Navigation lights	yes

EQUIPMENT

Fixed windscreen	yes
Cockpit cover	yes
Bimini	yes
Cockpit cushions	yes
Cockpit chairs	yes
Bathing platform	yes
Boarding ladder	stainless steel
Capstan	yes
Sea railing	stainless steel
Grab rail (superstructure)	stainless steel
Railing side opening gates	2x
Pushpit	yes
Pulpit	yes
Wiper	yes
Fenders	yes
Mooring lines	yes
TV	yes
Radio	yes
Cockpit speakers	yes
Speakers in salon	yes



BIRCHWOOD CRUSADER 340 AC



BIRCHWOOD CRUSADER 340 AC



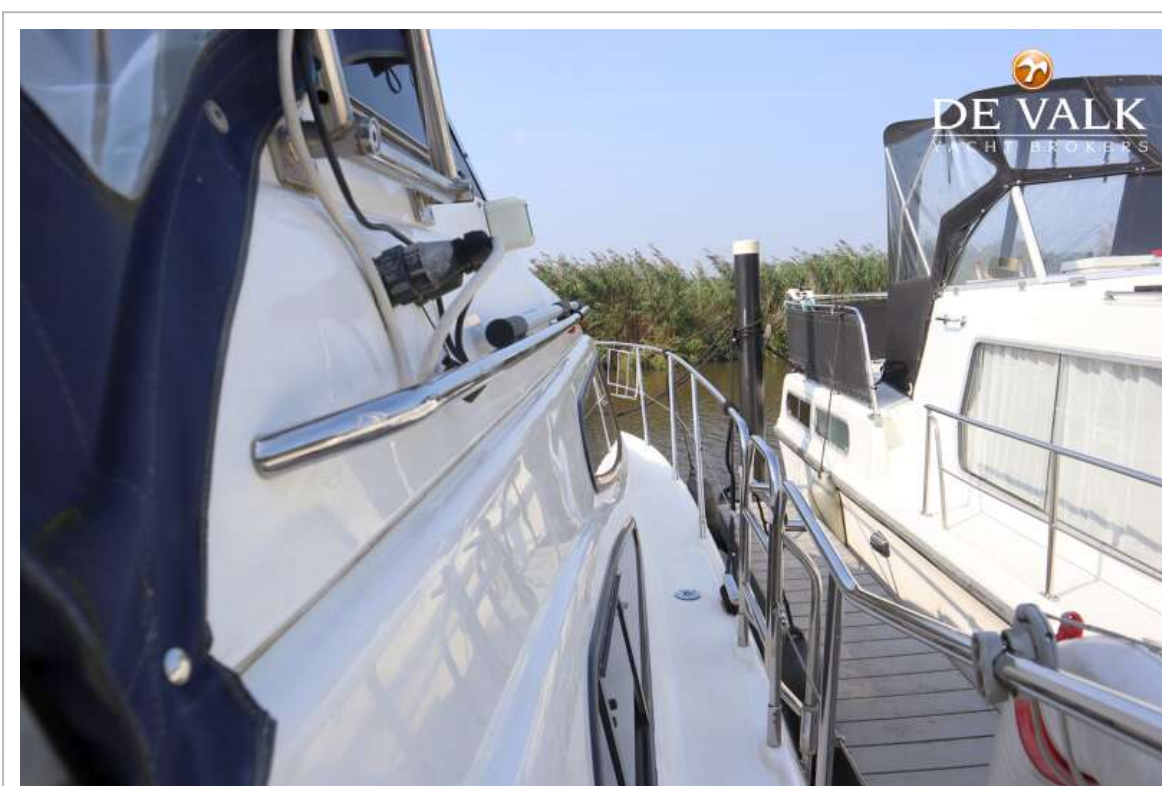
BIRCHWOOD CRUSADER 340 AC



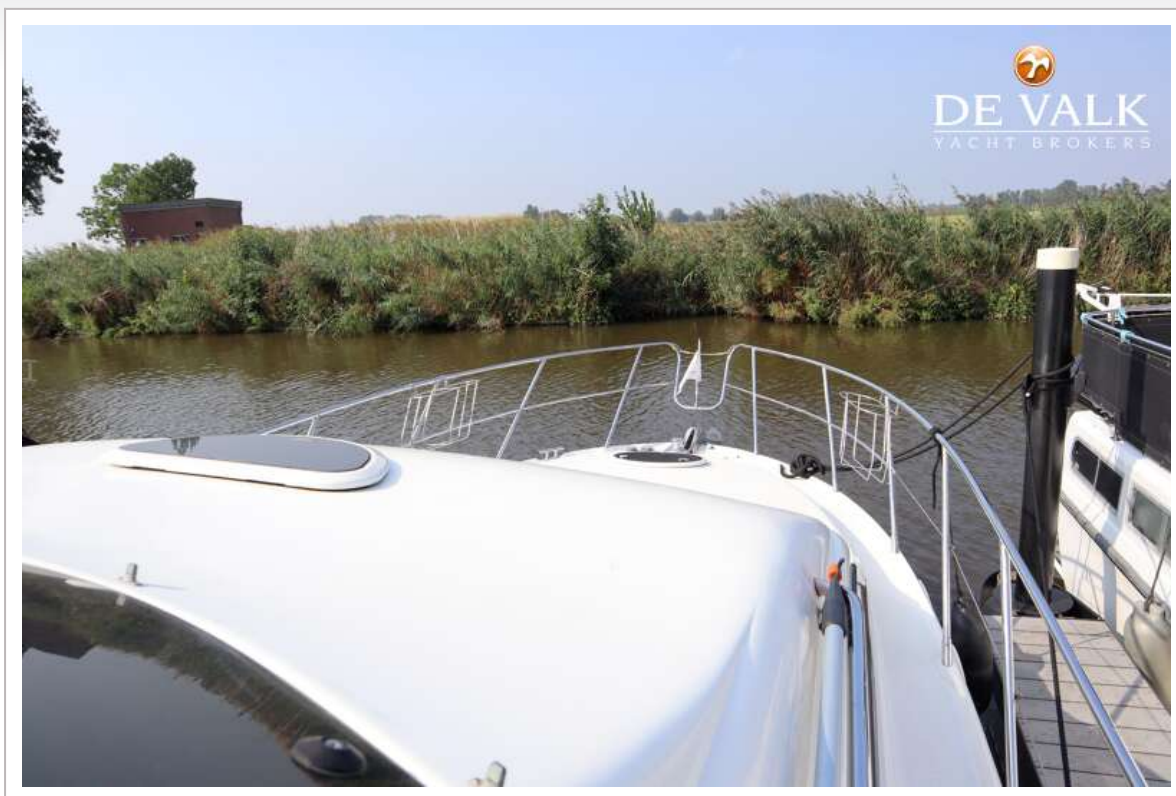
BIRCHWOOD CRUSADER 340 AC



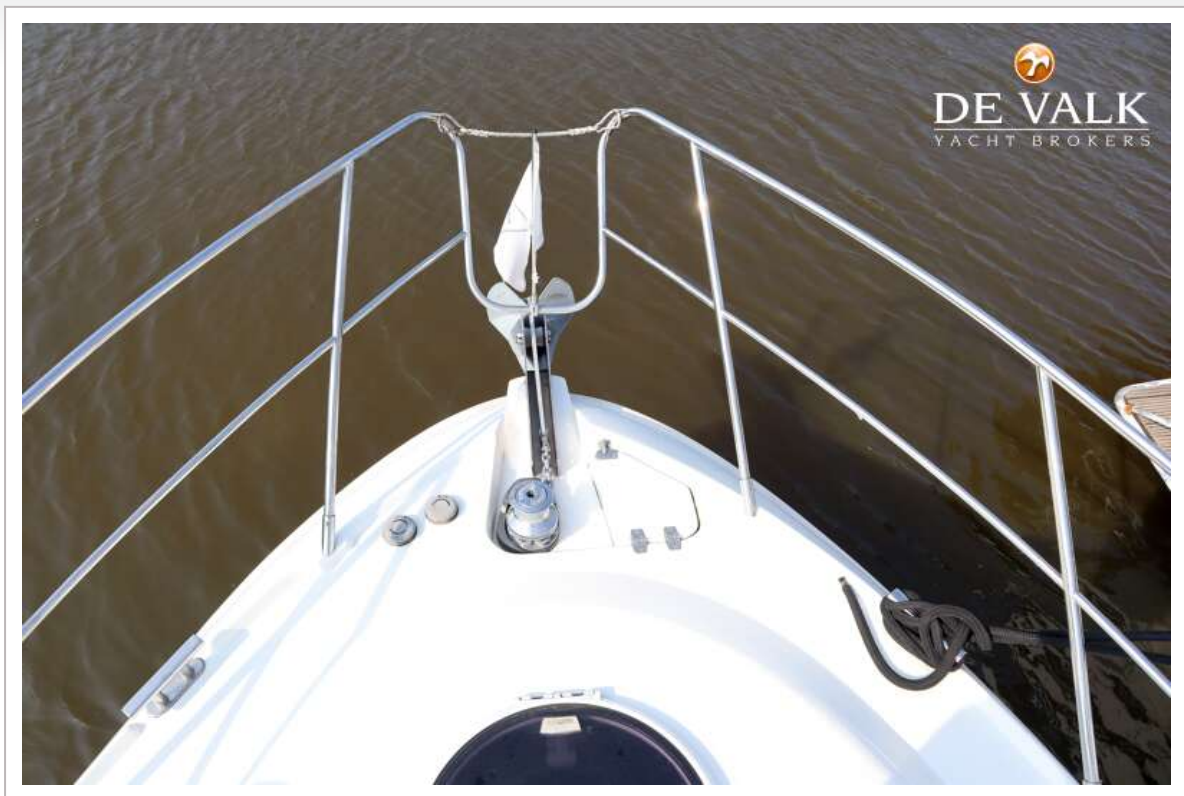
BIRCHWOOD CRUSADER 340 AC



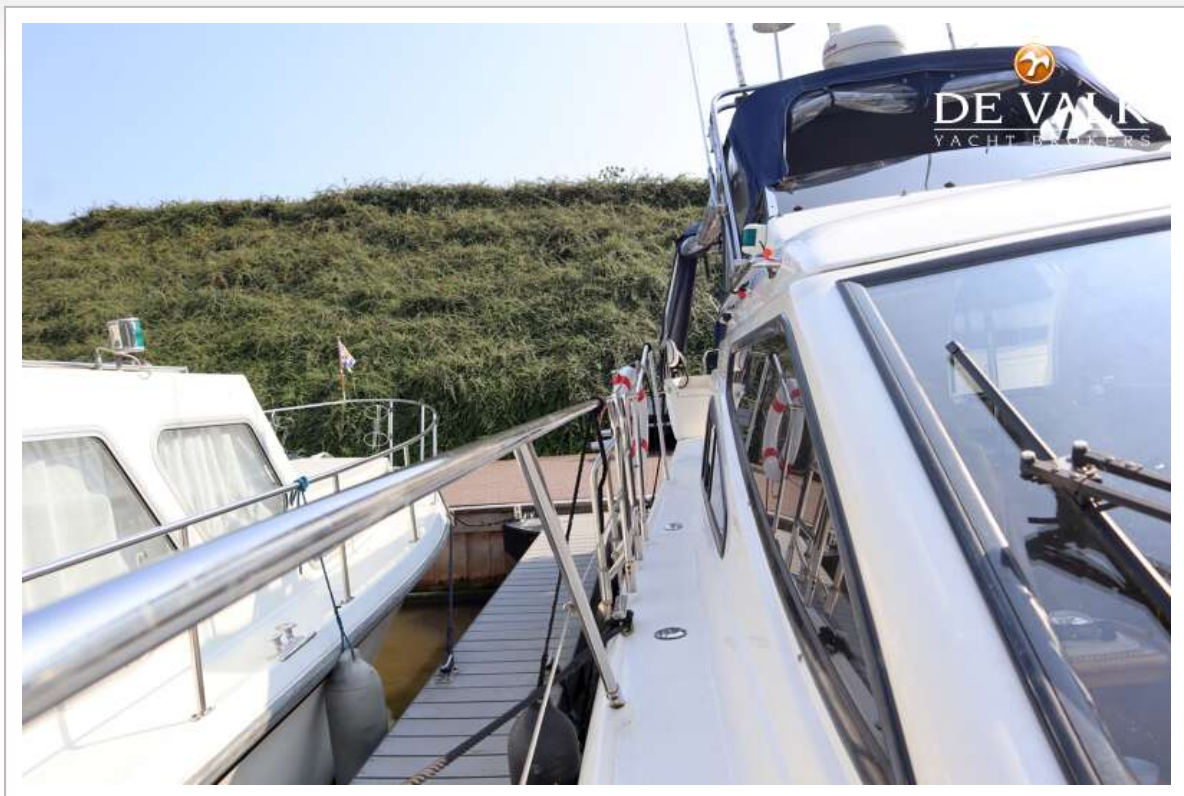
BIRCHWOOD CRUSADER 340 AC



BIRCHWOOD CRUSADER 340 AC



BIRCHWOOD CRUSADER 340 AC



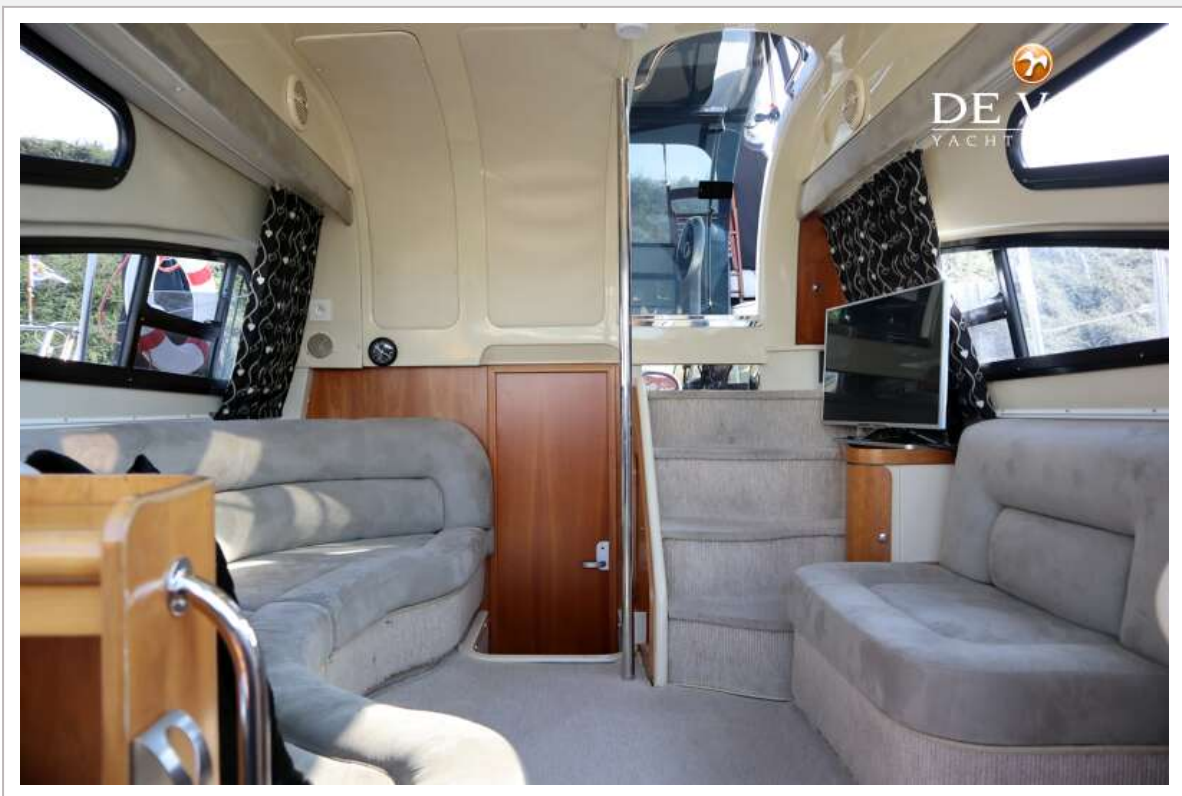
BIRCHWOOD CRUSADER 340 AC



BIRCHWOOD CRUSADER 340 AC



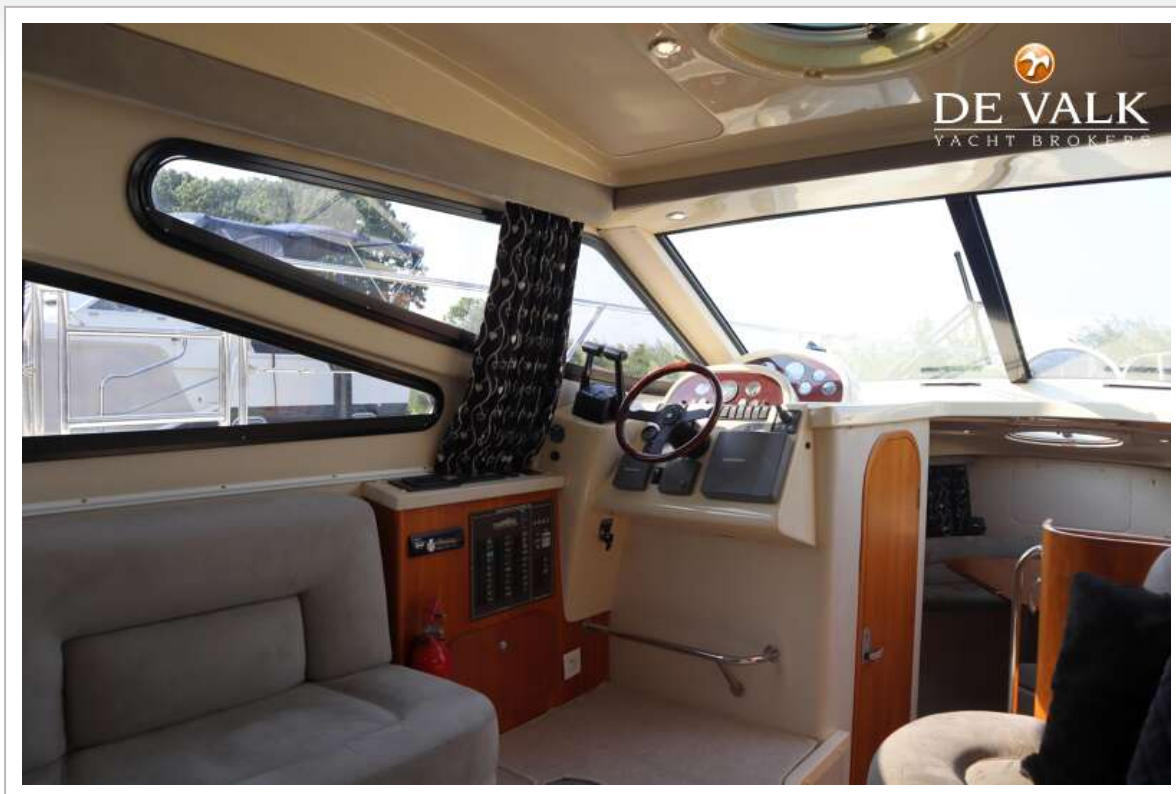
BIRCHWOOD CRUSADER 340 AC



BIRCHWOOD CRUSADER 340 AC



BIRCHWOOD CRUSADER 340 AC



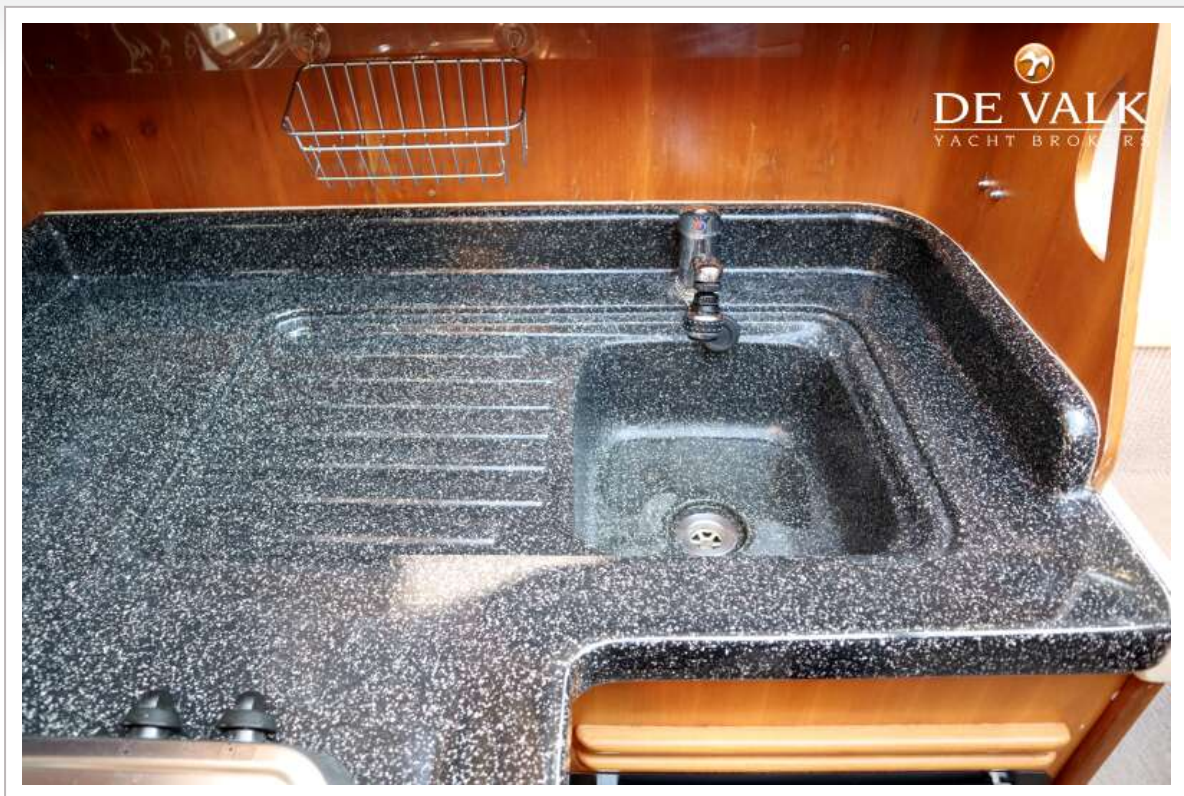
BIRCHWOOD CRUSADER 340 AC



BIRCHWOOD CRUSADER 340 AC



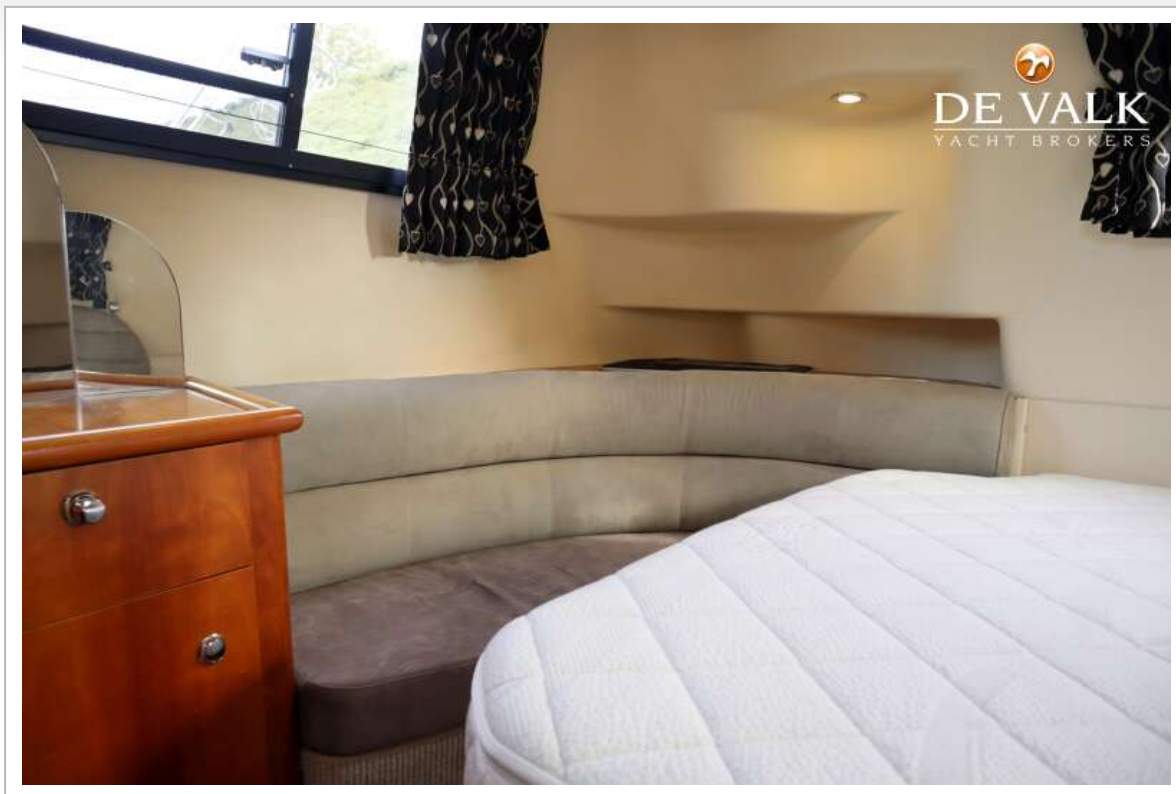
BIRCHWOOD CRUSADER 340 AC



BIRCHWOOD CRUSADER 340 AC



BIRCHWOOD CRUSADER 340 AC



BIRCHWOOD CRUSADER 340 AC



BIRCHWOOD CRUSADER 340 AC

