



SUPER VAN CRAFT 1570



SUPER VAN CRAFT 1570

BROKER'S COMMENTS

Super van Craft 15.70 'Unity' (1996) is a motor yacht with a layout you rarely see! The saloon and galley with dinette are situated on the same level. The yacht is equipped with four cabins, eight berths and two bathrooms. With her two Nanni diesel engines, hydraulic bow thruster and Kabola central heating, she is well equipped. This Super van Craft looks good and has been very well maintained. The hull and superstructure were recently (2024/2025) painted, 'Unity' looks great both exterior and interior. . . should you wish to view the Super van Craft 1570 . Welcome in Sneek

Henk de Vries

SPECIFICATIONS

Dimensions	15.70 x 4.45 x 1.40 (m)	Builder	Jachtwerf Klaassen Voorschoten
Built	1996	Cabins	4
Material	Steel	Berths	8
Engine(s)	2 x Nanni Diesel 6660E diesel	Hp/Kw	2 x 142.00 (hp), 104.51 (kw)
Asking price	€ 339.000 (VAT Paid)	Lying	

CONTACT

Sales office	De Valk Sneek	Telephone	+31 (0)515 42 80 30
Address	Zwolsmanweg 7 8606 KC Sneek NL	E-mail	sneek@devalk.nl

DISCLAIMER

These particulars are given in good faith as supplied but cannot be guaranteed.



SUPER VAN CRAFT 1570

GENERAL

Model	SUPER VAN CRAFT 1570
Type	motor yacht
LOA (m)	15,70
Beam (m)	4,45
Draft (m)	1,40
Air draft min (m)	2,90
Headroom (m)	2,00
Year built	1996
Builder	Jachtwerf Klaassen Voorschoten
Country	The Netherlands
Displacement (t)	30
CE norm	NA
Hull material	steel
Hull colour	white
Hull thickness (mm)	5
Hull shape	round-bilged
Superstructure material	steel
Superstructure (mm)	4
Deck plate thickness (mm)	4
Rubbing strake	stainless steel
Deck material	steel
Deck finish	teak
Superstructure deck finish	paint
Cockpit deck finish	teak
Antifouling (year)	2025
Window frame	aluminium Hora
Window material	glass
Portholes	12 x
Insulation	rockwool
Radar arch	collapsible



SUPER VAN CRAFT 1570

Fuel tank (litre)	steel Ca. 1000
Level indicator (fuel tank)	Unirex
Freshwater tank (litre)	stainless steel Ca. 1500
Level indicator (freshwater)	yes
Blackwater tank (litre)	stainless steel 2x ca.250
Level indicator (blackwater)	yes
Blackwater tank extraction	deck extraction
Wheel steering	mechanical
Outside helm position	mechanical
More info on paintwork	Hull and superstructure new painted 2024/2025

ACCOMMODATION

Cabins	4
Berths	8
Interior	teak
Floor	carpet
Aft deck	yes
Saloon	yes
Headroom saloon (m)	2,0
Sliding roof	yes
Heating	central heating Kabola B12 Tap
Aft Cabin	yes
Dinette	yes
Opening door to aft deck	yes
Galley	yes
Countertop	Wood
Sink	stainless steel
Cooker	electric Siemens 4-burner
Extractor	yes
Microwave/oven combi	Siemens
Fridge	2x



SUPER VAN CRAFT 1570

Freezer	In both fridges
Hot water system	on central heating
Water pressure system	electrical
Dishwasher	Siemens
Owners cabin	French bed
Bed length (m)	2,0
Wardrobe	hanging/drawers/shelves
Bathroom	shared
Toilet	shared
Toilet system	electric
Wash basin	in the bathroom
Shower	shared
Guest cabin 1	v-bed
Bed length (m)	2,0
Wardrobe	hanging and drawers
Bathroom	shared
Toilet	separate
Toilet system	electric
Wash basin	in the bathroom
Shower	separate
Guest cabin 2	twin single
Bed length (m)	2,0
Wardrobe	hanging and drawers
Guest cabin 3	twin single Under the gally floor
Bed length (m)	2,0
Washing machine/dryer combi	Siemens

MACHINERY

No of engines	2
Make	Nanni Diesel
Type	6660E



SUPER VAN CRAFT 1570

HP	142
kW	104.51
Fuel	diesel
Year installed	1996
Drive	shaft
Engine controls	bowden cable Morse
Gearbox	hydraulic Hurth HSW630
Bowthruster	hydraulic Attema
Thrust bearing	yes
Propeller type	fixed
Propeller blades	4
Propeller shaft material	stainless steel
Shaft lubrication	grease
Electric bilge pump	yes
Electrical installation	12V / 24V / 220V
Generator	Onan 12 Kva
Running hours generator	Ca 1500
Batteries	8x
Start battery	2x 135 Ah
Service battery	4x 135 Ah
Generator battery	2x
Battery monitor	yes
Battery charger	Victron Skylla 24/25
Inverter	Victron Atlas 24/1600
Shorepower	with cable
Insulation transformer	Victron Insulation Transformer 3600

NAVIGATION

Compass	yes
Depth sounder	Dataline X
Log	Dataline X



SUPER VAN CRAFT 1570

VHF	Shipmate RS 8300
Autopilot	Robertson AP 300X
Rudder angle indicator	VDO
Navigation lights	yes
Searchlight	Jabsco ITT

EQUIPMENT

Fixed windscreen	yes
Sprayhood	yes
Bimini	yes
Cockpit cushions	yes
Cockpit table	yes
Cockpit chairs	yes
Bathing platform	yes
Boarding ladder	stainless steel
Deck shower	yes
Anchor	Brittany
Anchor chain	yes
Windlass	electrical Vetus
Deck wash	yes
Davits	steel
Davits controls	electrical
Sea railing	stainless steel Teak &
Grab rail (superstructure)	stainless steel
Railing side opening gates	yes
Wiper	yes
Horn	yes
Fenders	yes
Mooring lines	yes
TV	JVC
TV receiver	yes



SUPER VAN CRAFT 1570

Radio-cd player	2x JVC
Speakers in salon	yes
Clock - barometer	yes
Fire extinguisher	yes



SUPER VAN CRAFT 1570



SUPER VAN CRAFT 1570



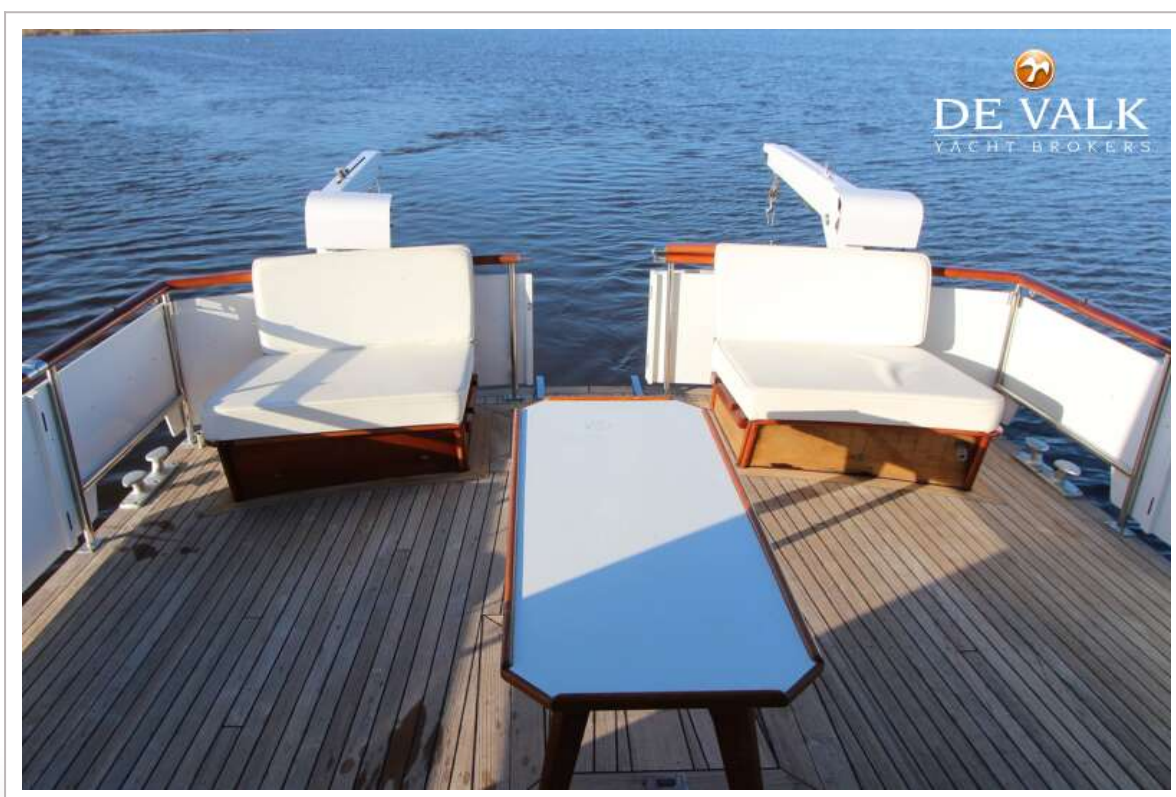
SUPER VAN CRAFT 1570



SUPER VAN CRAFT 1570



SUPER VAN CRAFT 1570



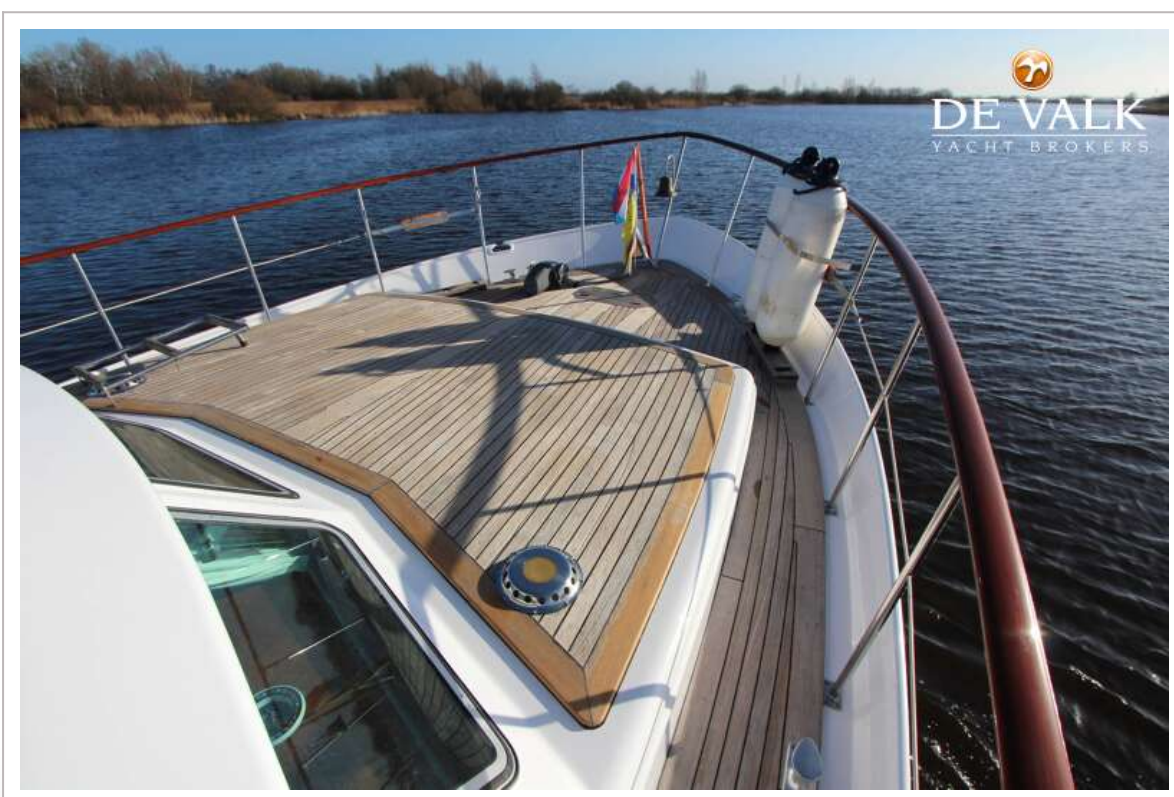
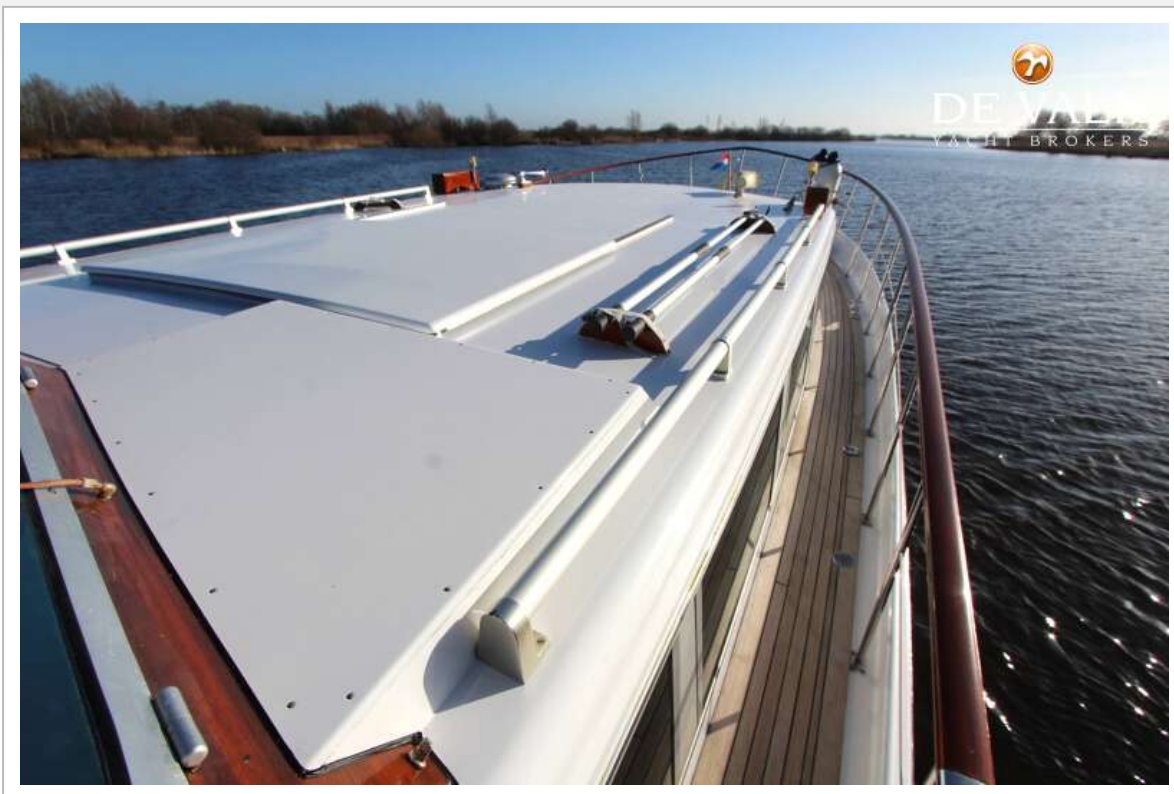
SUPER VAN CRAFT 1570



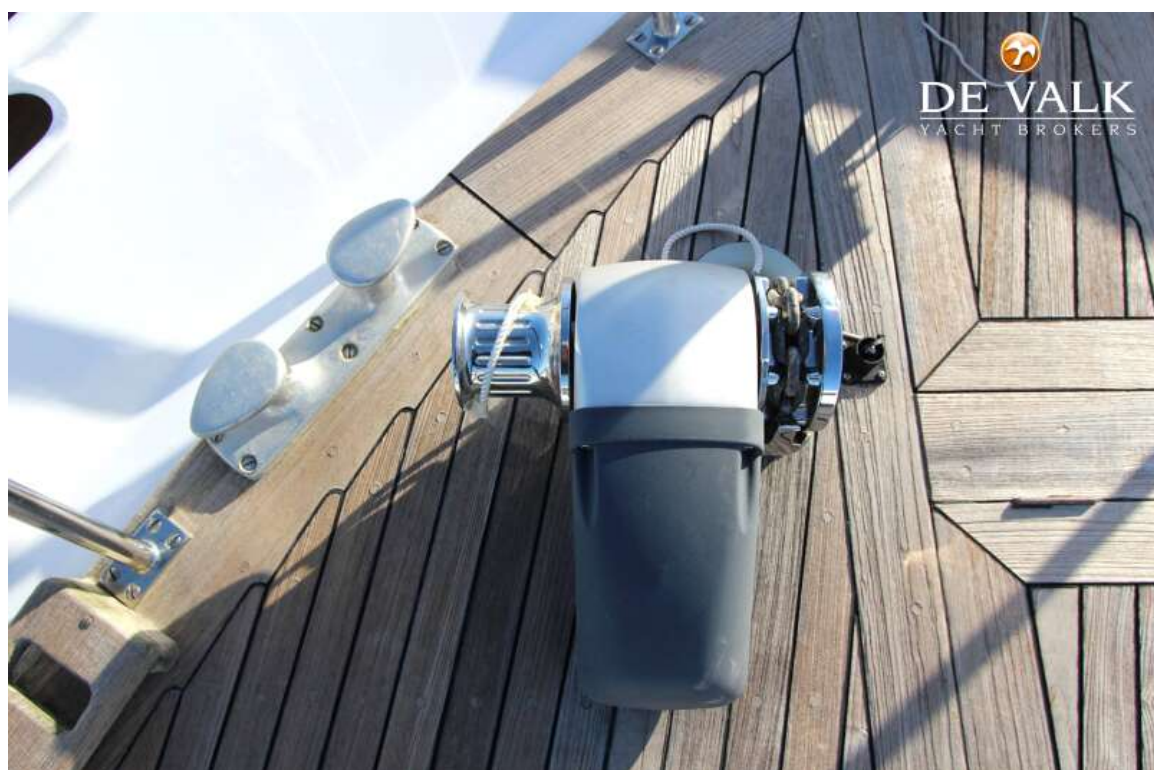
SUPER VAN CRAFT 1570



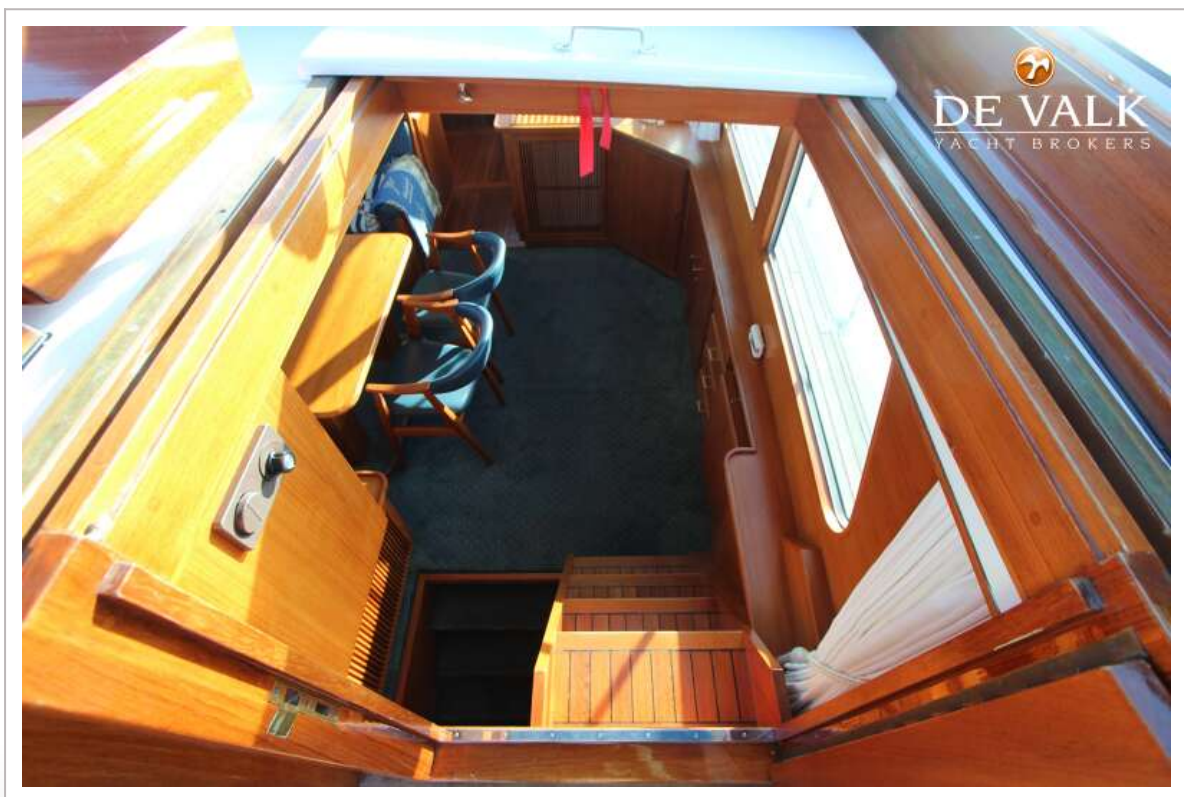
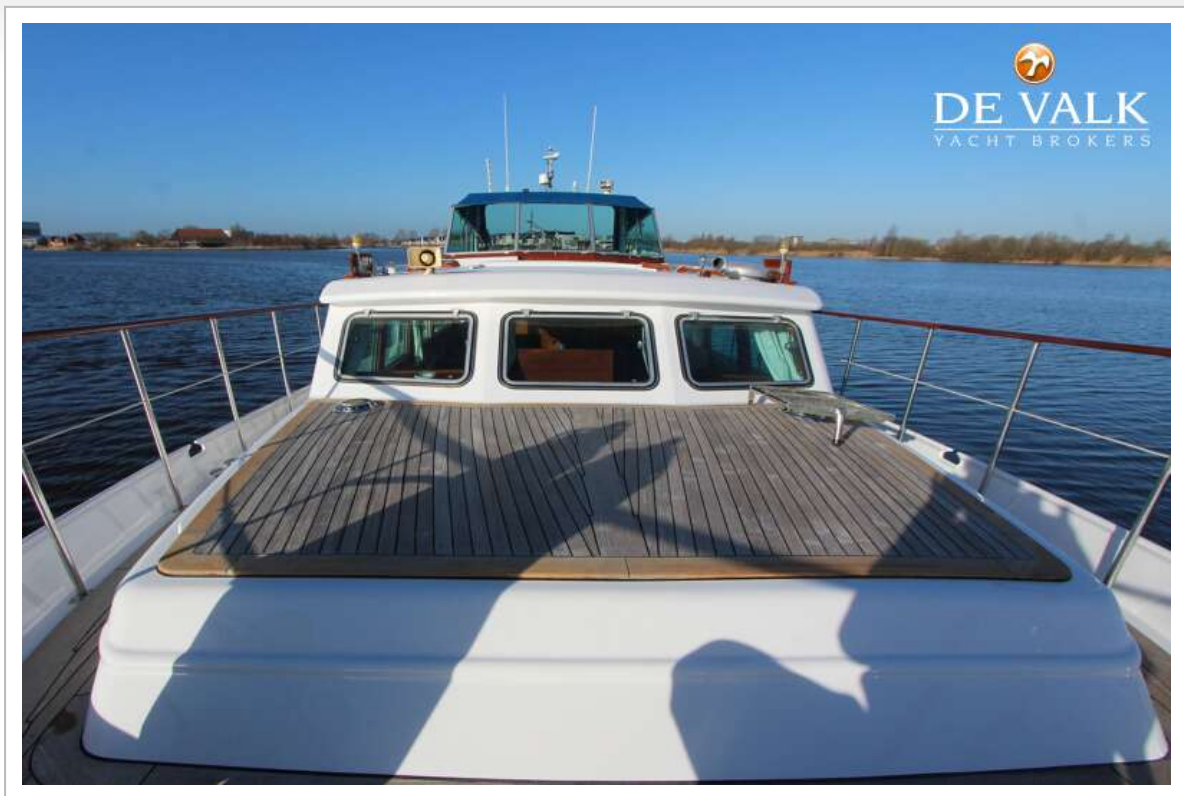
SUPER VAN CRAFT 1570



SUPER VAN CRAFT 1570



SUPER VAN CRAFT 1570



SUPER VAN CRAFT 1570



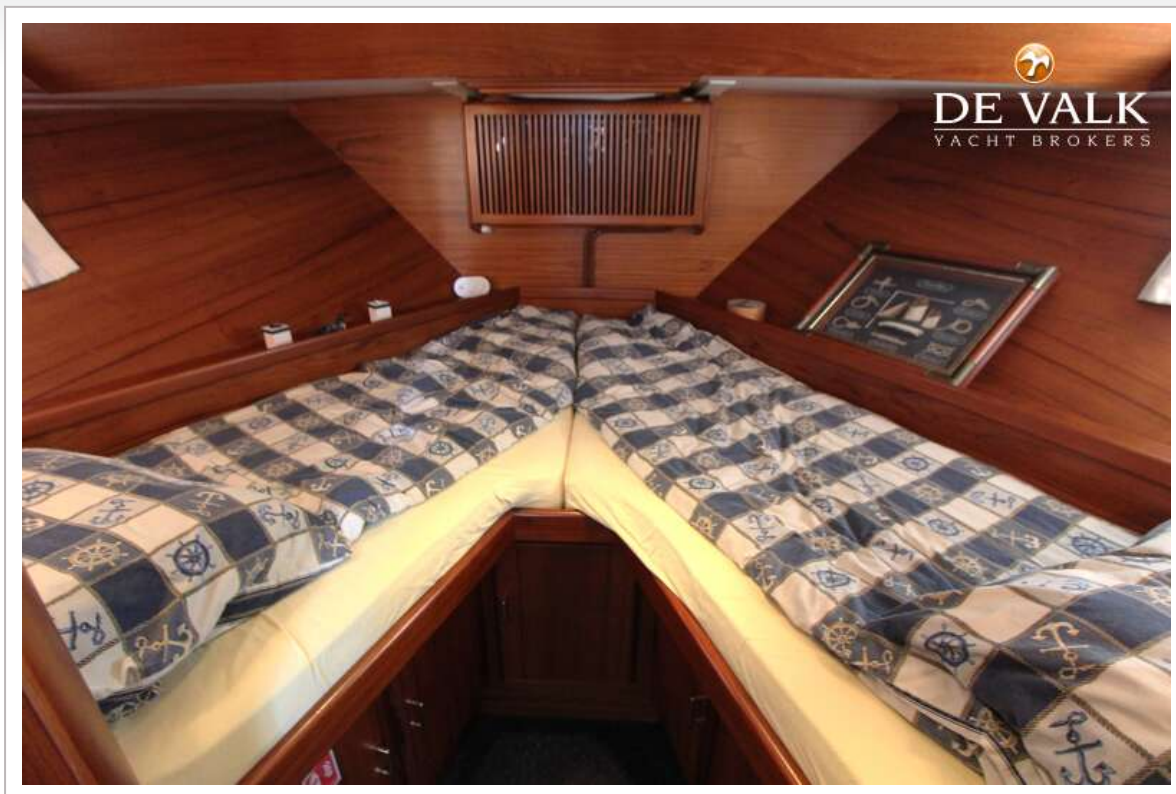
SUPER VAN CRAFT 1570



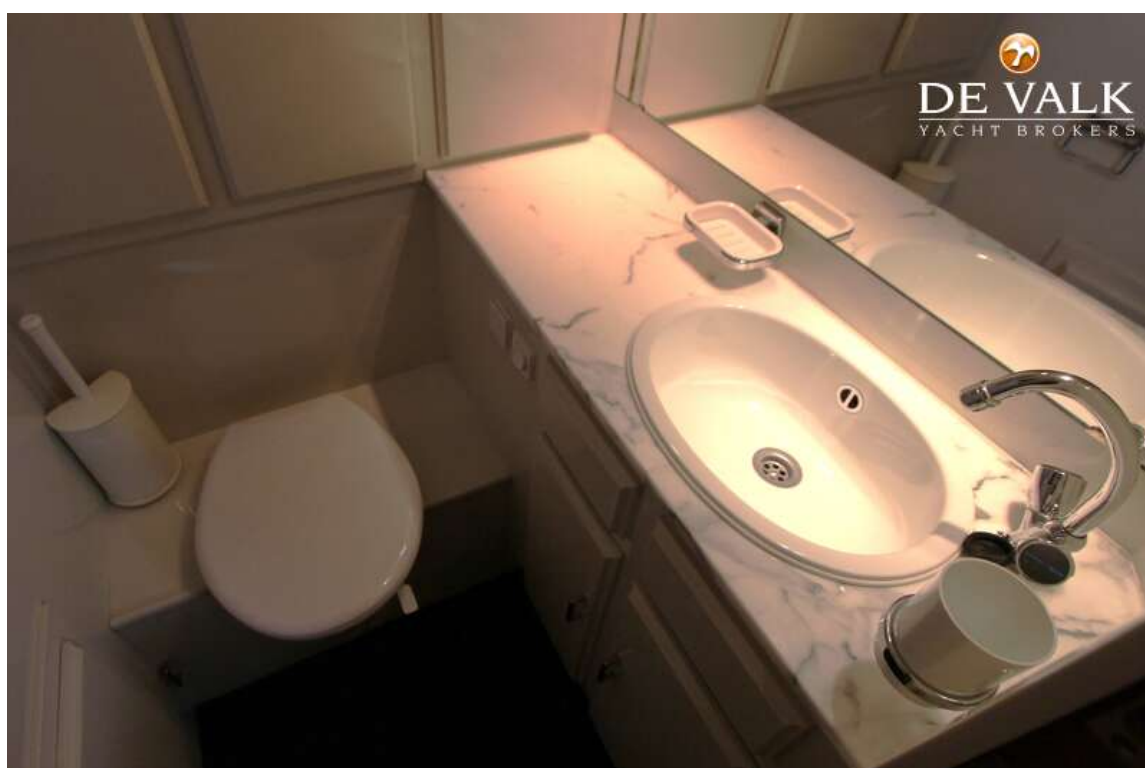
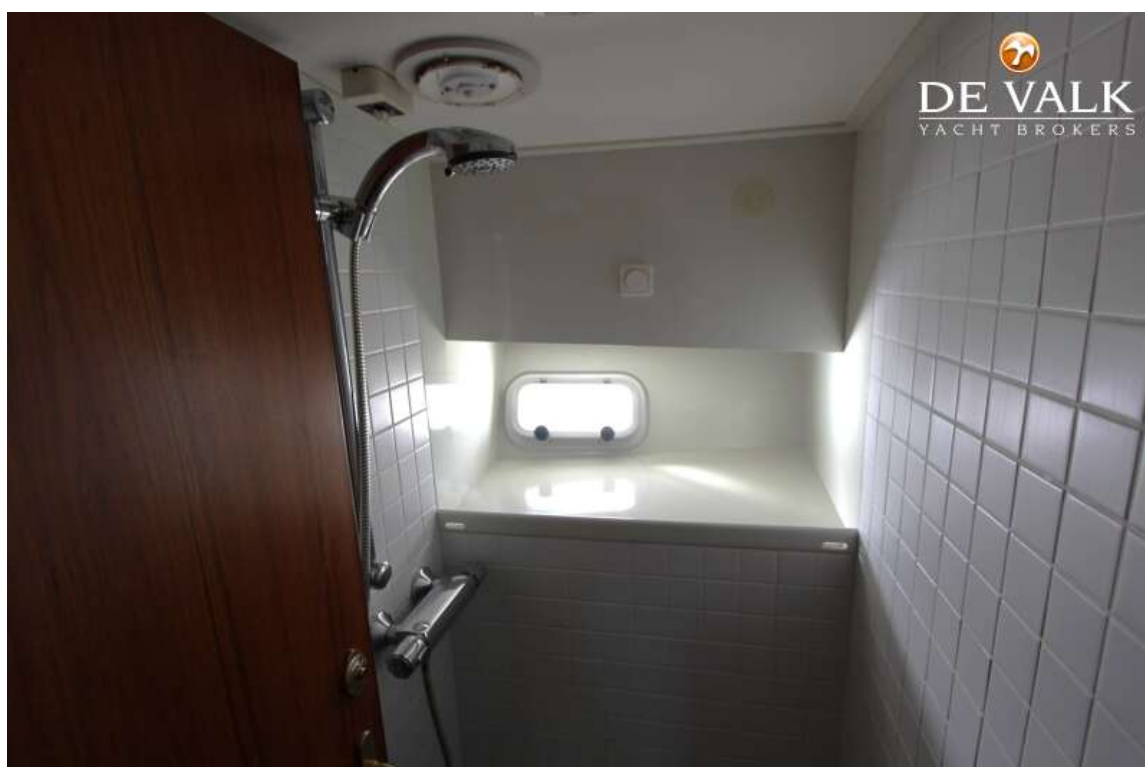
SUPER VAN CRAFT 1570



SUPER VAN CRAFT 1570



SUPER VAN CRAFT 1570



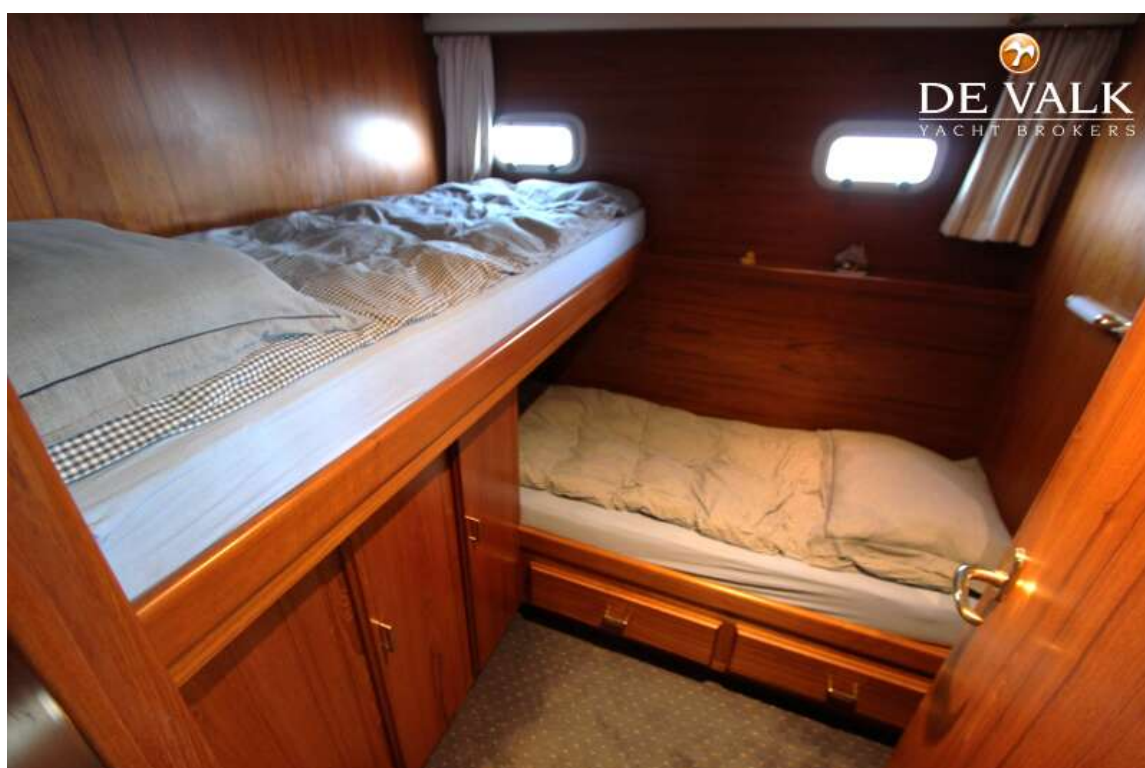
SUPER VAN CRAFT 1570



SUPER VAN CRAFT 1570



SUPER VAN CRAFT 1570



SUPER VAN CRAFT 1570

