



## ELAN IMPRESSION 384

# ELAN IMPRESSION 384

## BROKER'S COMMENTS

This beautiful Elan 384 is fully equipped and prepared for offshore and distance cruising. The striking grey hull and sleek lines makes her a real head turner. Represented in very good condition throughout with a huge inventory.

*Ron Neij*

## SPECIFICATIONS

<b>Dimensions</b>	11.55 x 3.91 x 1.80 (m)	<b>Builder</b>	Elan
<b>Built</b>	2006	<b>Cabins</b>	3
<b>Material</b>	GRP	<b>Berths</b>	6
<b>Engine(s)</b>	1 x Volvo Penta D1-30 diesel	<b>Hp/Kw</b>	30.00 (hp), 22.05 (kw)
<b>Asking price</b>	sold (VAT )	<b>Lying</b>	at sales office

## CONTACT

<b>Sales office</b>	De Valk Monnickendam B.V.	<b>Telephone</b>	+31 (0)299 65 63 50
<b>Address</b>	Hoogedijk 6 1145 PM Katwoude NL	<b>E-mail</b>	monnickendam@devalk.nl

## DISCLAIMER

These particulars are given in good faith as supplied but cannot be guaranteed.



## GENERAL

Model	ELAN IMPRESSION 384
Type	sailing yacht
LOA (m)	11,55
LWL (m)	11,25
Beam (m)	3,91
Draft (m)	1,80
Air draft (m)	16,57
Year built	2006
Builder	Elan
Country	Slovenia
Designer	Rob Humphreys Yacht Design
Displacement (t)	7,6
CE norm	A
Hull material	GRP
Hull colour	grey
Hull shape	round-bilged
Keel type	fin keel
Superstructure material	GRP
Deck material	GRP
Deck finish	teak
Cockpit deck finish	teak
Window frame	aluminium
Window material	polycarbonate
Deckhatch	yes
Fuel tank (litre)	165 L.
Freshwater tank (litre)	GRP - 450 L. in 3 tanks
Blackwater tank (litre)	yes
Wheel steering	Lewmar folding wheel
Extra info	Spade rudder



## ACCOMMODATION

Cabins	3
Berths	6
Interior	cherry
Floor	teak and holly
Saloon	yes
Heating	diesel ducted hot air - Webasto
Heating 2	Electric radiator elektrische radiator Elektroheizkörper
Chart table	yes
Aft Cabin	double
Galley	yes
Countertop	plastic
Sink	stainless steel - Double dubbel Doppel
Cooker	calor gas - 2 burner pits Flammich
Oven	yes
Gas alarm	yes
Fridge	12V.
Freezer	yes
Hot water system	220V + engine
Water pressure system	electrical
Owners cabin	double bed
Bathroom	en suite
Toilet	Jabsco
Toilet system	manual
Wash basin	yes
Shower	yes
Guest cabin 1	double bed
Bathroom	separate
Toilet	separate
Wash basin	yes
Shower	yes



Guest cabin 2

double bed

## MACHINERY

No of engines

1

Make

Volvo Penta

Type

D1-30

HP

30

kW

22.05

Fuel

diesel

Year of overhaul

professional serviced every two years

Maximum speed (kn)

7

Cruising speed (kn)

6,5

Consumption (l/hr)

2,5

Range (nm)

350

Engine hours

Display defect

Engine cooling system

freshwater heat exchanger

Drive

sail-drive

Engine controls

bowden cable

Exhaust

watercooled

Propeller type

folding

Propeller blades

3

Manual bilge pump

yes

Electric bilge pump

yes

Batteries

3x

Start battery

80AH (2016)

Service battery

2x180 AH (2016)

Battery monitor

yes

Battery charger

Victron blue smart 30A (2017)

Inverter

Mastervolt 1Kw

Solar panel

no longer present, the connections and controller are still present.



Shorepower	with cable
Extra info	Engine: intercooler (2020), impeller pump overhaul (2022)

## NAVIGATION

Compass	yes
Depth sounder	Raymarine ST60
Windset	Raymarine ST60
VHF	Raymarine 54E
VHF handheld	yes
Autopilot	Raymarine ST6001
Radar	Raymarine 2Kw Raydome
GPS	yes
Plotter	Raymarine E80
AIS transponder	AIS transponder easy (2016)
EPIRB	yes
Navigation lights	aqua signal led anchor + 3 colours
Extra info	digital weather station

## EQUIPMENT

Sprayhood	yes
Bimini	yes
Cockpit cushions	2x
Cockpit table	yes
Boarding ladder	stainless steel
Anchor	Delta
Anchor chain	50 M.
Windlass	electrical - Lofrans
Sea railing	wire
Grab rail (superstructure)	stainless steel
Railing side opening gates	yes
Pushpit	yes



<b>Pulpit</b>	yes
<b>Life raft</b>	Viking UKSL RescYou Pro
<b>Life raft (pers)</b>	6
<b>Last life raft survey</b>	Needs to be checked
<b>Lifebuoy</b>	yes
<b>Horn</b>	yes
<b>Radar reflector</b>	SeaMe active
<b>Fenders</b>	yes
<b>Mooring lines</b>	yes
<b>Spare parts</b>	yes
<b>Satellite</b>	Amplified TV antenna
<b>Radio-cd player</b>	CD/MPS stereo
<b>Speakers in salon</b>	yes
<b>Speakers in cabin</b>	yes
<b>Clock - barometer</b>	yes
<b>Fire extinguisher</b>	yes
<b>Extra info</b>	yes
<b>Extra info</b>	Fire blanket. Bluetooth. Mosquito screens. Wifi signal amplifier.

## RIGGING

<b>Rigging</b>	sloop
<b>Standing rigging</b>	wire S/s (2006)
<b>Brand mast</b>	Seldén
<b>Material mast</b>	aluminium
<b>Spreaders</b>	Double
<b>Mainsail</b>	checked by Rifkin sailmaker last winter. - Victory (2006)
<b>Genoa</b>	checked by Rifkin sailmaker last winter. - Victory (2006)
<b>Spinnaker</b>	checked by Rifkin sailmaker last winter. - (2006)
<b>Trysail</b>	Yes, with extra track on mast
<b>Stormjib</b>	checked by Rifkin sailmaker last winter. - (2006)
<b>Backstay adjuster</b>	mechanical

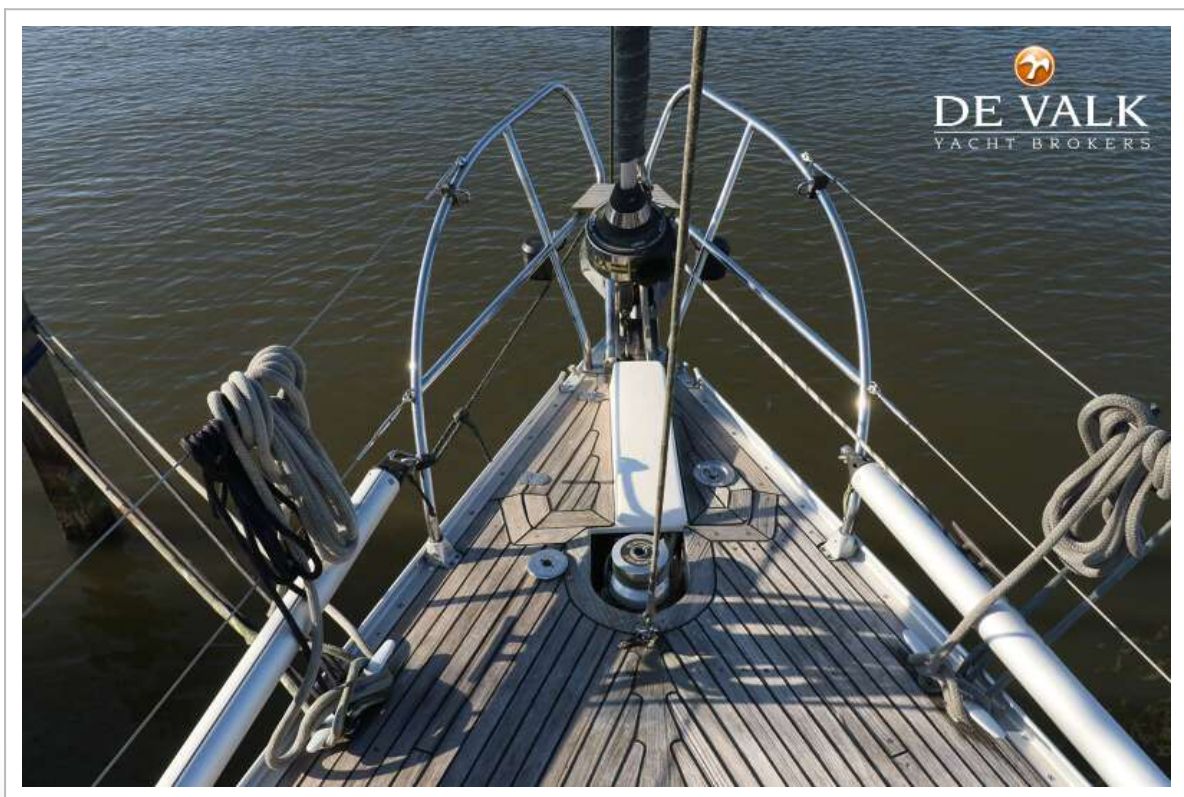


Boomvang	mechanical and tackle - Seldén Rodkicker
Primary sheet winch	2x Harken 44
Secondary sheet winch	2x Harken Electrical operated
Extra info	'Twistle' twin headsail downwind sail. Slab reefing with lazy jacks - single line - 3 reefs.
Extra info	Harden roller bearing cars.





# ELAN IMPRESSION 384



# ELAN IMPRESSION 384





# ELAN IMPRESSION 384



# ELAN IMPRESSION 384

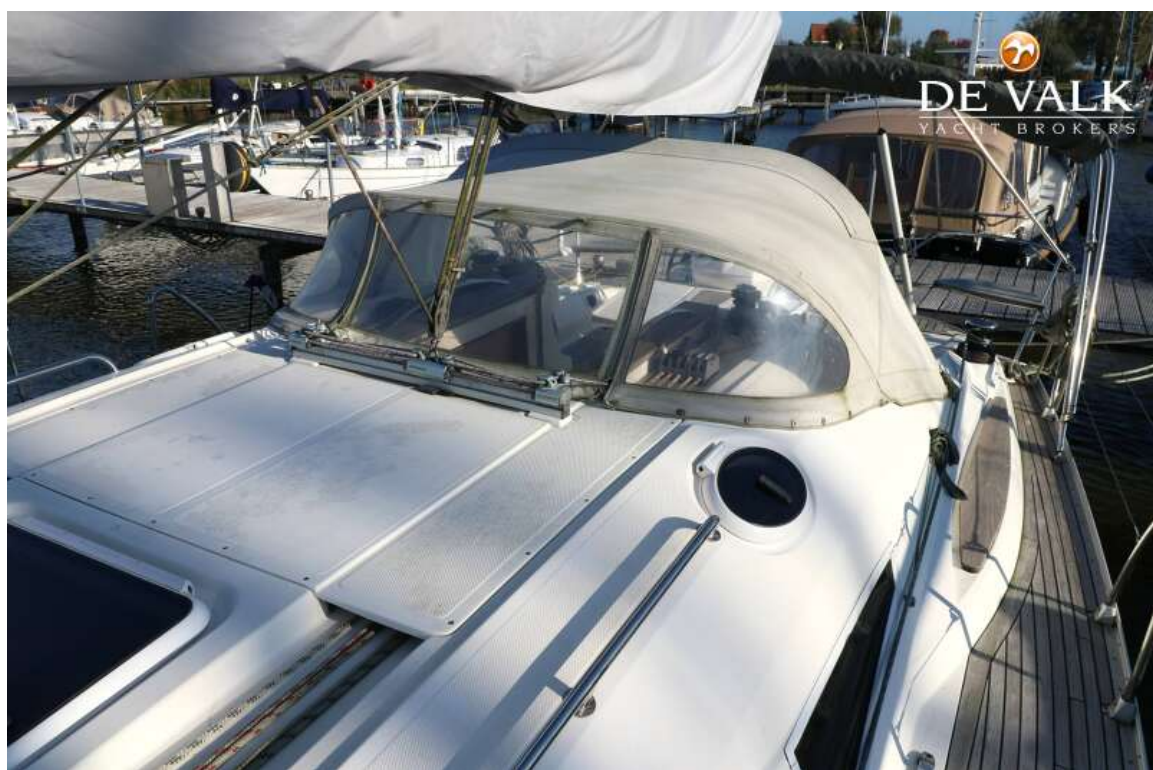




# ELAN IMPRESSION 384



# ELAN IMPRESSION 384





# ELAN IMPRESSION 384

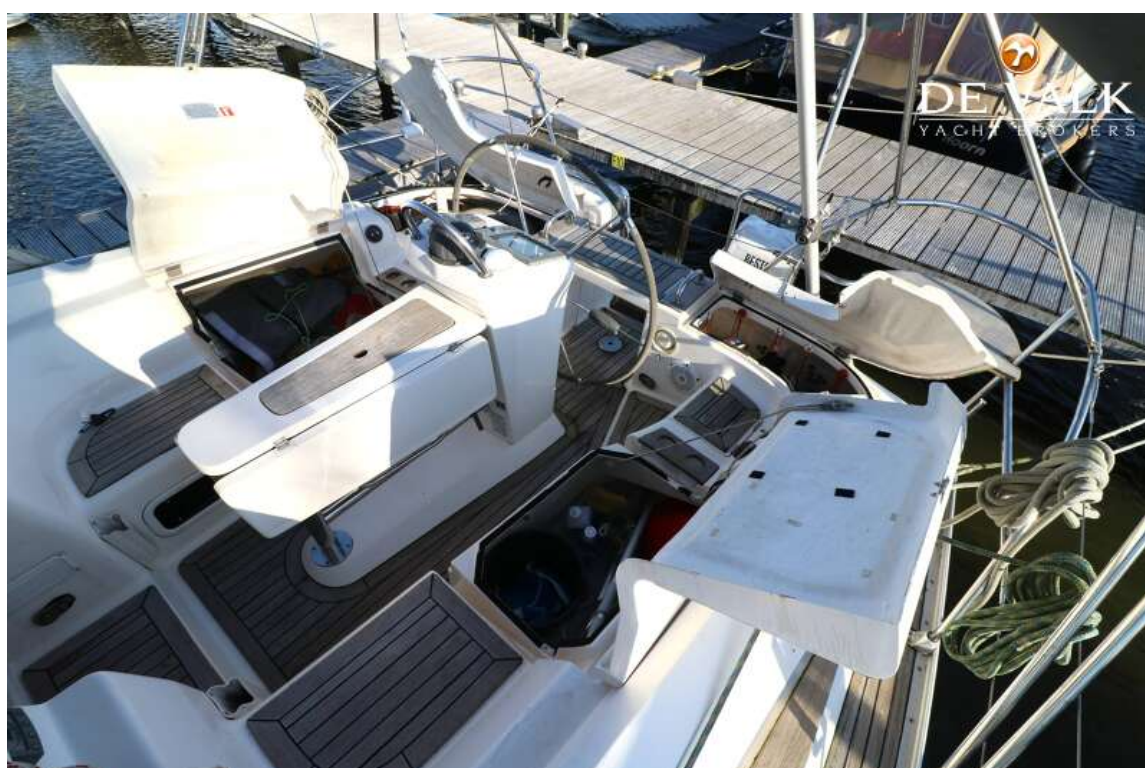


# ELAN IMPRESSION 384





# ELAN IMPRESSION 384



# ELAN IMPRESSION 384





# ELAN IMPRESSION 384



# ELAN IMPRESSION 384



# ELAN IMPRESSION 384





# ELAN IMPRESSION 384

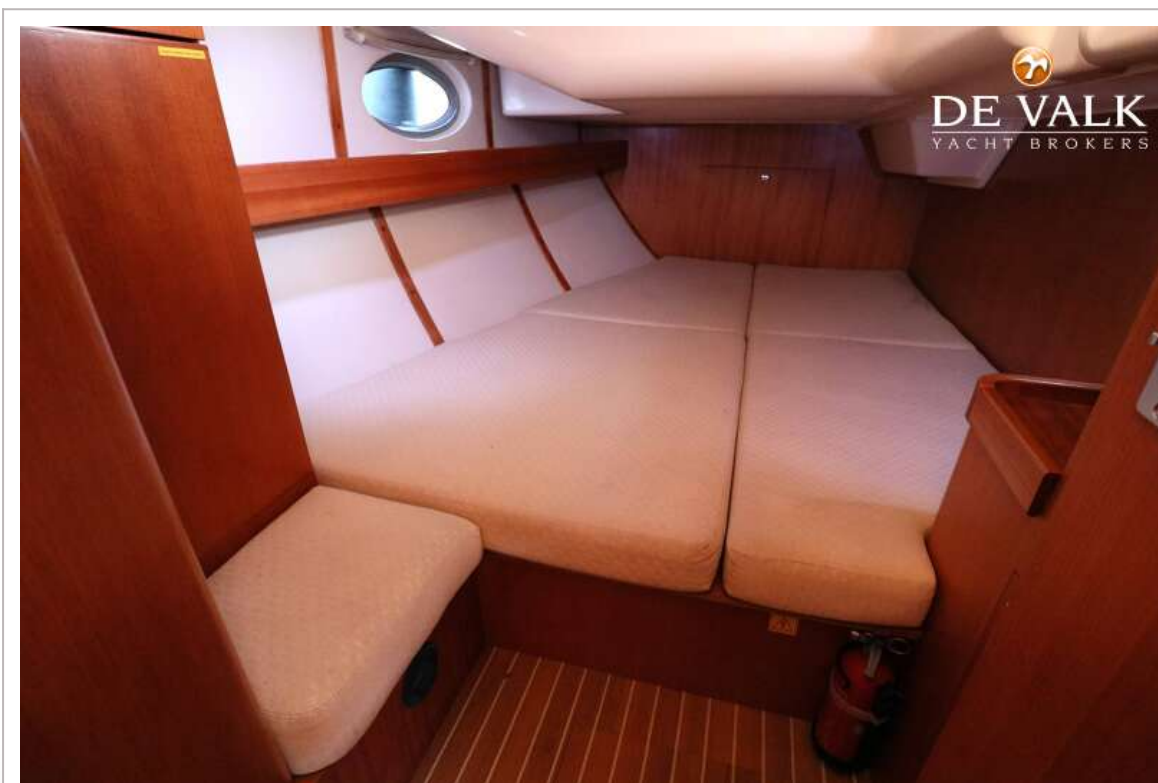


# ELAN IMPRESSION 384



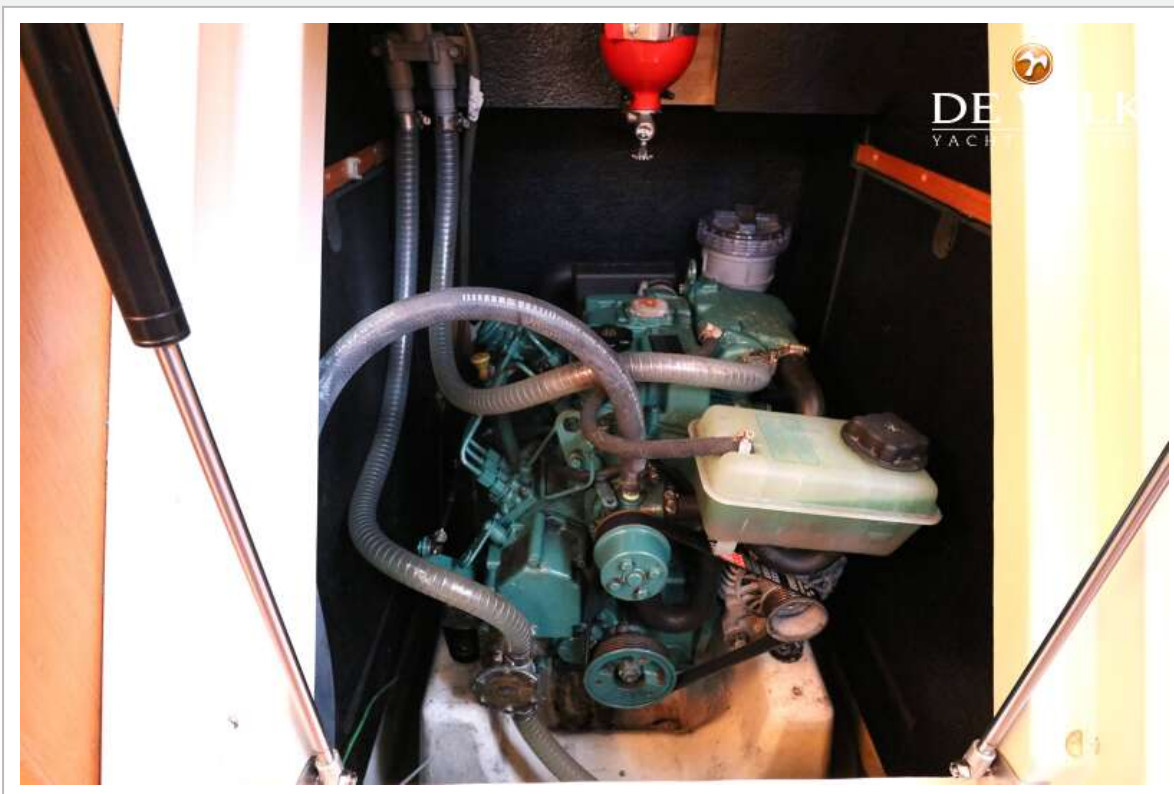


# ELAN IMPRESSION 384





# ELAN IMPRESSION 384



# ELAN IMPRESSION 384

