



DE VALK
YACHT BROKERS



VRIPACK 63 CUSTOM M/Y



DE VALK
YACHT BROKERS

VRIPACK 63 CUSTOM M/Y

BROKER'S COMMENTS

Discover the Vripack 63 Custom M/Y (2012) – a stylish 19.10-meter motor yacht, built by Proliner Yachts. This robust steel yacht combines comfort and technology with three cabins, six berths, and luxurious features such as underfloor heating, Miele appliances, and new upholstery in 2025. Powered by twin Perkins 190 hp engines and equipped with stabilizers, a hydraulic bathing platform, Starlink, and recently renewed touchscreen displays. Perfectly maintained with new paintwork in 2025 and a CVO certificate issued in 2024.

Ian Pols

SPECIFICATIONS

Dimensions	19.10 x 5.24 x 1.50 (m)	Builder	Proliner Yachts Leeuwarden
Built	2012	Cabins	3
Material	Steel	Berths	6
Engine(s)	2 x Perkins M190C diesel	Hp/Kw	2 x 190.00 (hp), 139.84 (kw)
Asking price	€ 895.000 (VAT Paid)	Lying	at sales office

CONTACT

Sales office	De Valk Altena	Telephone	+31 162 727211
Address	Keizersveer 3A 4941 TA Raamsdonksveer NL	E-mail	altena@devalk.nl

DISCLAIMER

These particulars are given in good faith as supplied but cannot be guaranteed.



GENERAL

Model	VRIPACK 63 CUSTOM M/Y
Type	motor yacht
LOA (m)	19,10
Beam (m)	5,24
Draft (m)	1,50
Air draft (m)	7,10
Air draft min (m)	5,24
Headroom (m)	2,00
Year built	2012
Builder	Proliner Yachts Leeuwarden
Country	The Netherlands
Designer	Vripack Naval Architects - Sneek
Displacement (t)	45
CE norm	A
Hull material	steel
Hull colour	blue
Hull shape	multi hard chine
Superstructure material	steel
Rubbing strake	stainless steel
Deck material	steel
Deck finish	teak
Superstructure deck finish	paint
Antifouling (year)	2025, Onderwaterschip is gestraald in 2022
Window frame	aluminium
Window material	double glazing
Deckhatch	aluminium
Portholes	stainless steel
Insulation	foam
Radar arch	collapsible
Mast can be lowered	electric



Fuel tank (litre)	steel 3000
Level indicator (fuel tank)	Op de beeldscherm in de stuurstand
Freshwater tank (litre)	polyethylene 1500
Level indicator (freshwater)	Op de beeldscherm in de stuurstand
Blackwater tank (litre)	polyethylene 1500
Level indicator (blackwater)	Op de beeldscherm in de stuurstand
Blackwater tank extraction	deck extraction + pump
Wheel steering	hydraulic
Inside helm position	yes
More info on paintwork	Compleet geschilderd in Awlgrip 2025
Extra info	Nieuwe CVO certificaat afgegeven in 2024

ACCOMMODATION

Cabins	3
Berths	6
Floor	wood
Pilot house	yes
Saloon	yes
Sliding roof	electric
Heating	central heating Kabola KB45
Heating 2	floor heating
Air-conditioning	single cycle airco
Navigation center	yes
Galley	yes
Countertop	corian
Sink	stainless steel
Cooker	electric Bora
Microwave/oven combi	Miele
Fridge	1x Miele in keuken 1x Miele in stuurhut
Freezer	Siemens
Hot water system	on central heating



Water pressure system	electrical
Dishwasher	Miele
Hot water tap	Quooker
Owners cabin	French bed 180 x 210, nieuwe Neptune matrassen in 2022
Wardrobe	hanging/drawers/shelves
Bathroom	en suite
Toilet	en suite
Toilet system	electric
Shower	en suite
Guest cabin 1	double bed Nieuwe Neptune matrassen in 2022
Bathroom	separate
Toilet	separate
Toilet system	electric
Wash basin	in the bathroom
Shower	separate
Guest cabin 2	twin single Nieuwe Neptune matrassen in 2022
Extra info	Honeywell is op afstand te bedienen met een app
Extra info	Nieuwe stoffering binnenkussens 2025

MACHINERY

No of engines	2
Make	Perkins
Type	M190C
HP	190
kW	139.84
Fuel	diesel
Engine hours	2366
Engine cooling system	freshwater heat exchanger
Drive	shaft
Engine controls	electrical
Gearbox	hydraulic ZF



Engine controls	electrical
Bowthruster	hydraulic
Sternthruster	hydraulic
Propeller type	fixed
Propeller shaft material	stainless steel
Shaft lubrication	water
Electric bilge pump	yes
Bilge alarm	yes
Electrical installation	12V, 24V, 220V
Generator	wet exhaust Kohler 17kW, autostart bij 70%, te starten op afstand via een ap
Running hours generator	543
Batteries	12 x 2V 2000Ah
Start battery	yes
Generator battery	yes
Battery monitor	Victron op schermen in de stuurstand
Battery charger/inverter	2x Victron Quattro 24V/ 8000W/ 100A (2025)
Shorepower	with cable Voorzien van kWh meter in de machinekamer
Insulation transformer	Victron Energy Isolation Transformer 7000W
Watermaker	Express XT 360 (2025)
Stabilizers	fin Naiad

NAVIGATION

Compass	Simrad RC42
Depth sounder/log	DST810
VHF	Simrad RS90
Autopilot	Simrad
Rudder angle indicator	yes
Radar	Simrad + FU80
GPS	yes
Plotter	2 nieuwe touchscreen schermen (2025)



Electronis chart(s)	yes
AIS transceiver	OceanSat Class A AIS
Camera	BB, SB, achterschip & machinekamer, te bekijken op afstand, 2024
Navigation lights	yes
Searchlight	yes
Extra info	Starlink

EQUIPMENT

Cockpit cushions	2025
Bathing platform	Hydraulisch afzinkbaar
Deck shower	yes
Anchor	RVS
Anchor chain	RVS
Windlass	hydraulic Lofrans
Deck wash	yes
Dinghy	YAM-350TAf (2024)
Outboard	Yamaha 20pk (2024)
Sea railing	stainless steel
Life raft	container
Lifejackets	yes
Wiper	yes
Horn	yes
Fenders	2024
Mooring lines	2024
TV	5x
Fire extinguisher	yes
Auto extinguisher system	AF-X FP1200



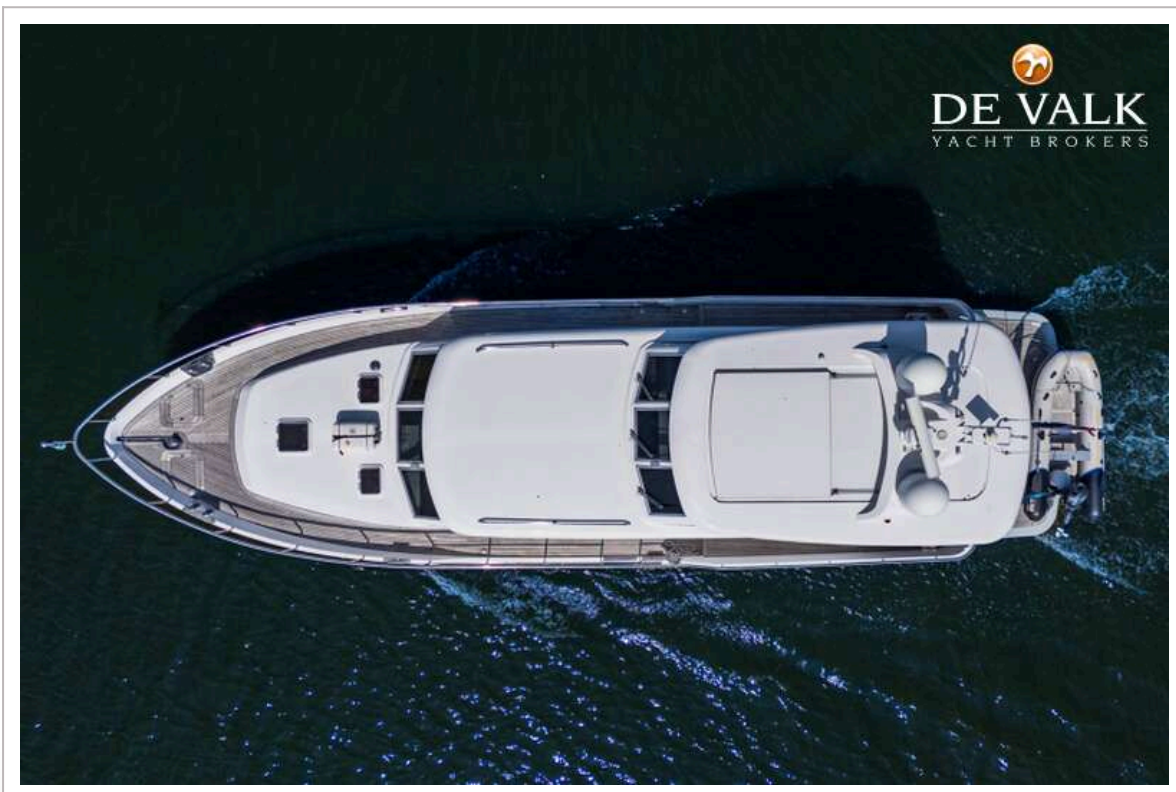
VRIPACK 63 CUSTOM M/Y



VRIPACK 63 CUSTOM M/Y



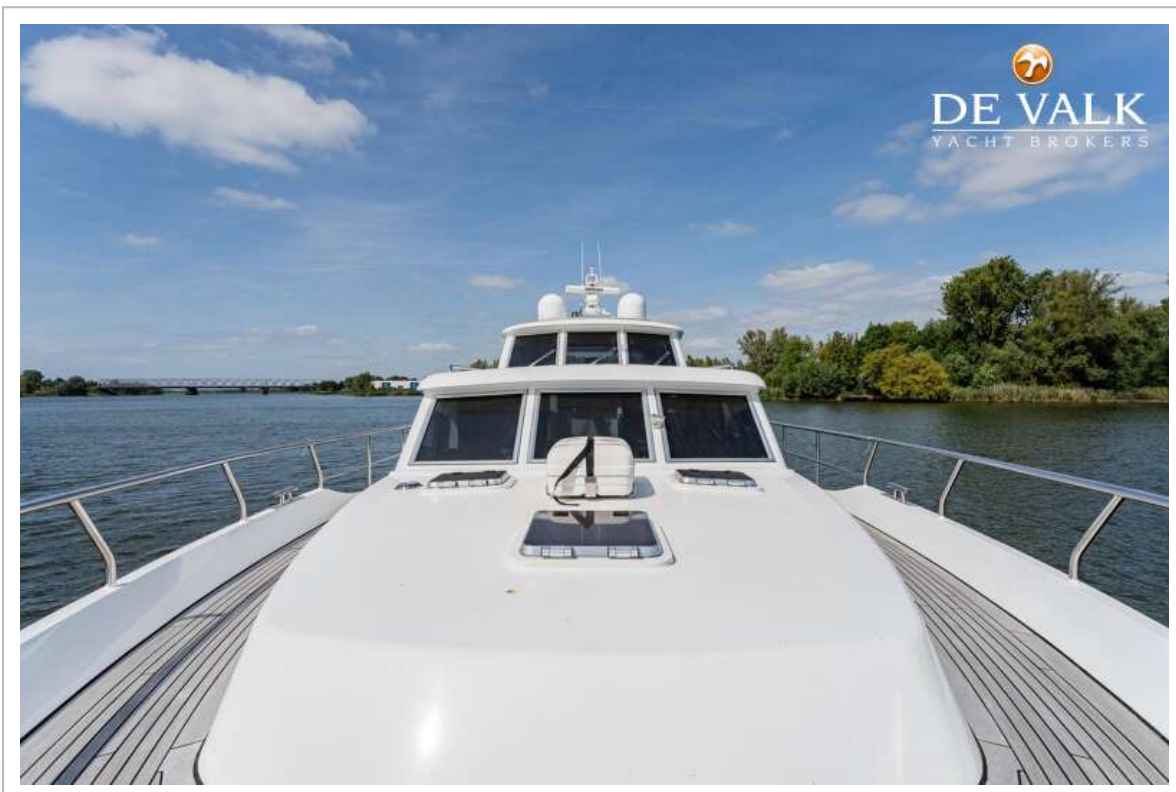
VRIPACK 63 CUSTOM M/Y



VRIPACK 63 CUSTOM M/Y



VRIPACK 63 CUSTOM M/Y



VRIPACK 63 CUSTOM M/Y



VRIPACK 63 CUSTOM M/Y



VRIPACK 63 CUSTOM M/Y



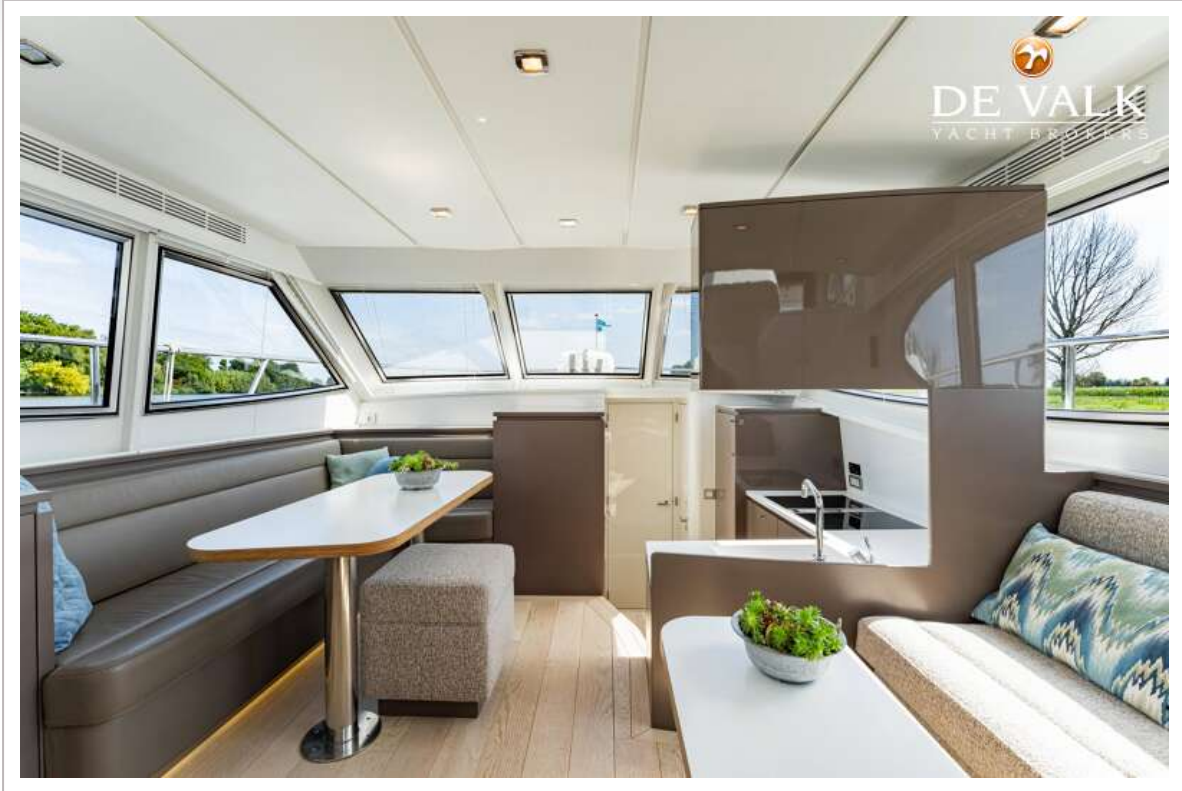
VRIPACK 63 CUSTOM M/Y



VRIPACK 63 CUSTOM M/Y

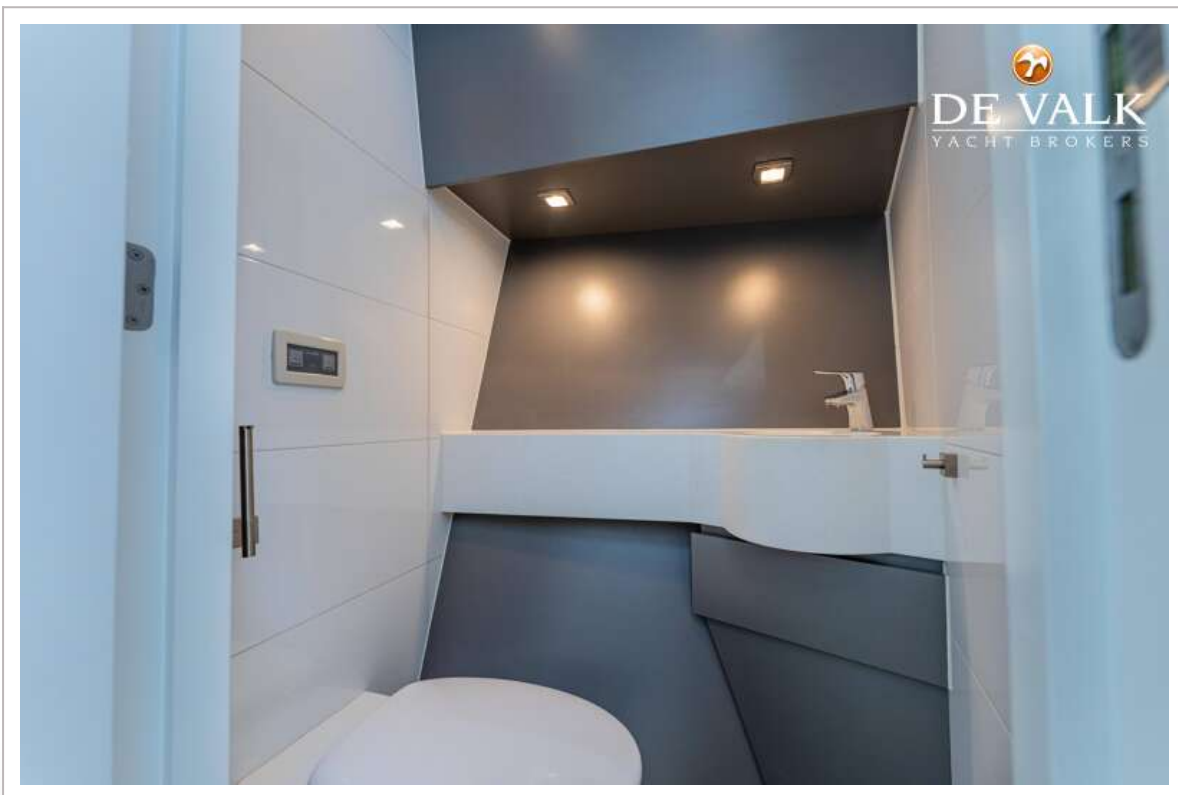


VRIPACK 63 CUSTOM M/Y

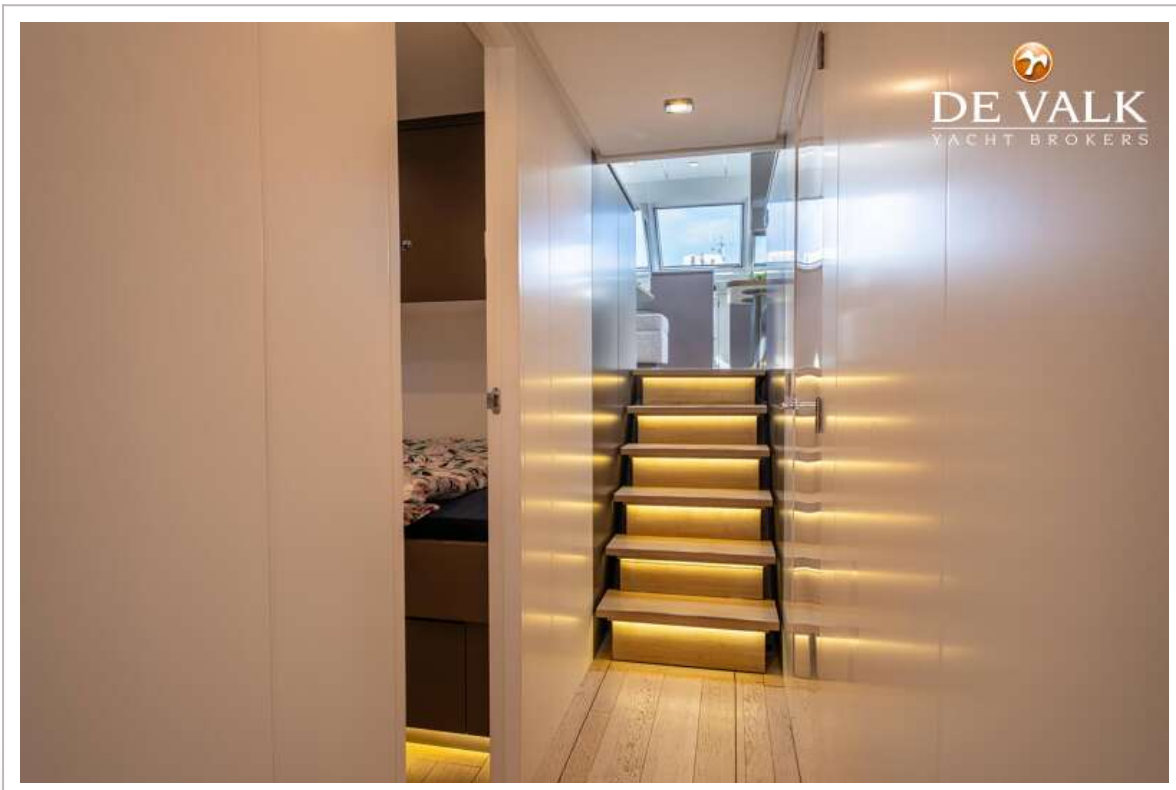
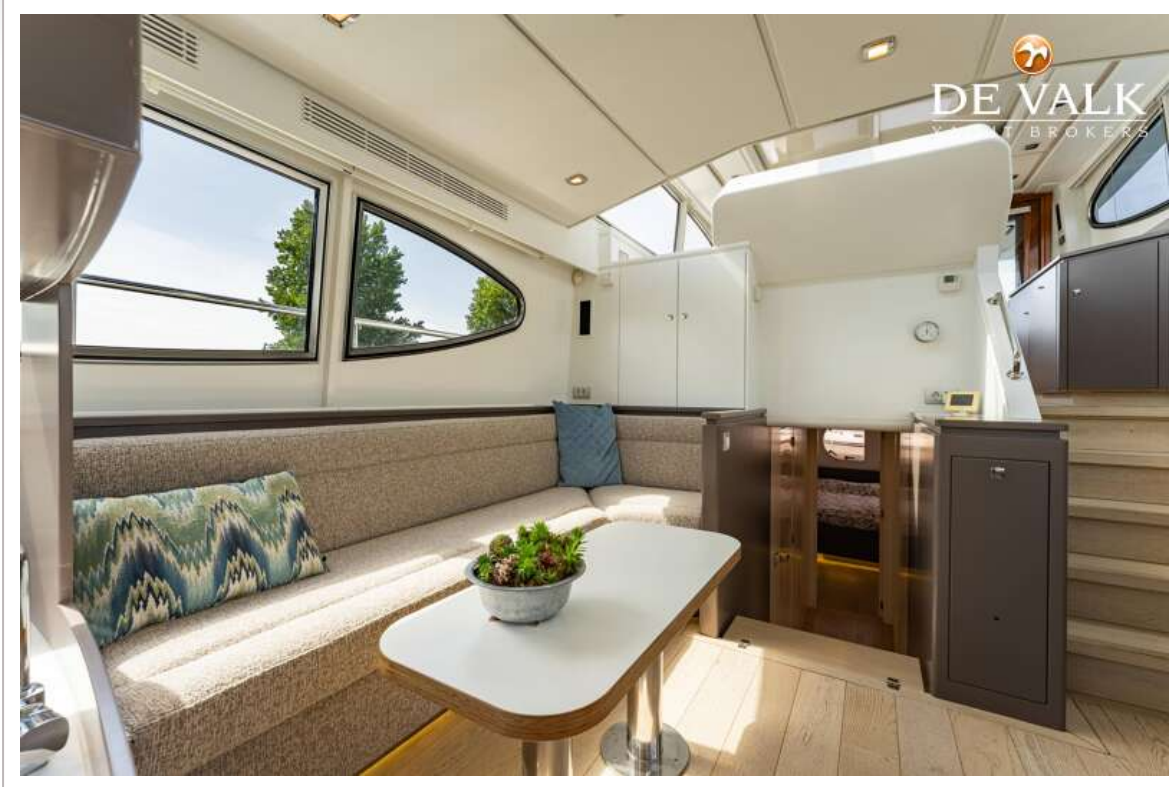


VRIPACK 63 CUSTOM M/Y





VRIPACK 63 CUSTOM M/Y

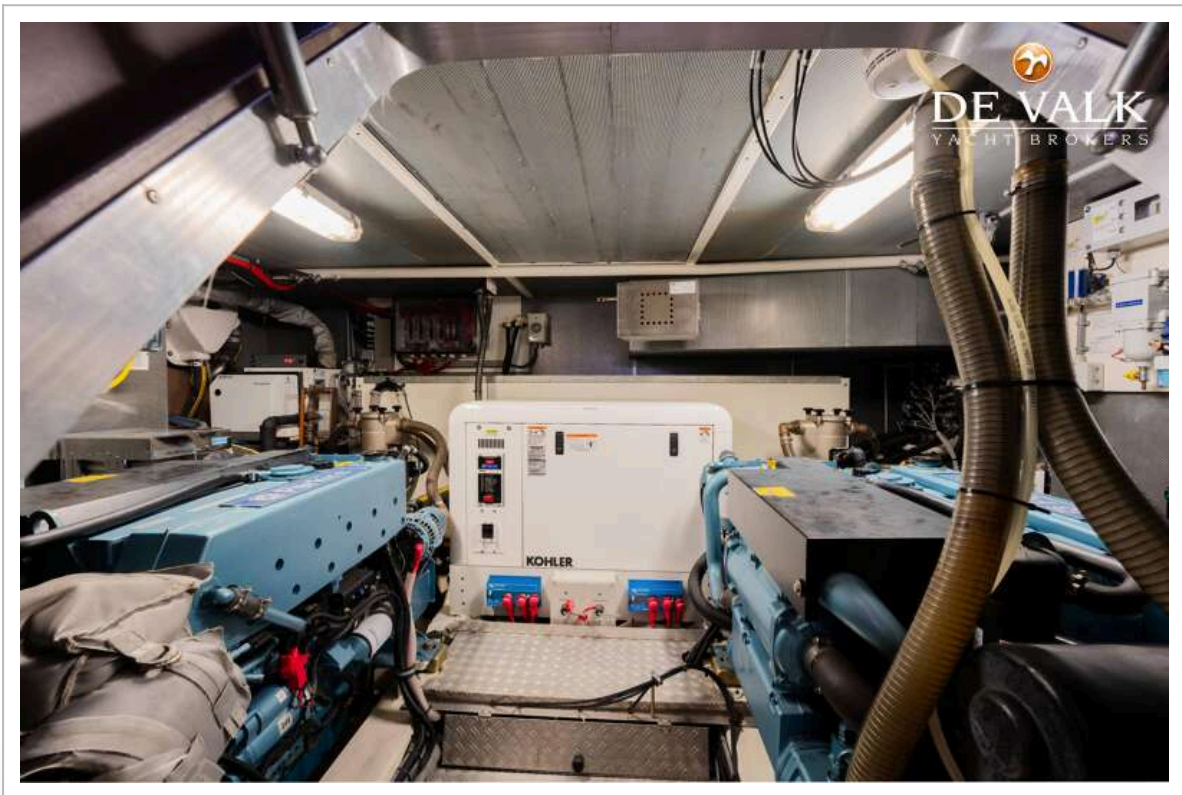


VRIPACK 63 CUSTOM M/Y





VRIPACK 63 CUSTOM M/Y



VRIPACK 63 CUSTOM M/Y

