



ASTONDOA 68 GLX FLYBRIDGE

# ASTONDOA 68 GLX FLYBRIDGE

## BROKER'S COMMENTS

A classic yacht fully equipped and ready for comfortable cruising. Extensively refitted over the last four years. Lots of new equipment and toys onboard! Perfect for active family holidays. And not least with all the documentation ready for charter in Croatia!

*Miha Spendal*

## SPECIFICATIONS

<b>Dimensions</b>	20.26 x 5.40 x 2.70 (m)	<b>Builder</b>	Astilleros Astondoa
<b>Built</b>	1995	<b>Cabins</b>	4
<b>Material</b>	GRP	<b>Berths</b>	7
<b>Engine(s)</b>	2 x MAN diesel	<b>Hp/Kw</b>	2 x 2,399.00 (hp), 1,765.66 (kw)
<b>Asking price</b>	€ 299.000 (VAT Paid)	<b>Lying</b>	elsewhere / Not at sales office

## CONTACT

<b>Sales office</b>	De Valk Istria	<b>Telephone</b>	+386 (1) 600 2704
<b>Address</b>	(Marina Izola) Dantejeva Ulica 22 6310 Izola Slovenia	<b>E-mail</b>	istria@devalk.nl

## DISCLAIMER

These particulars are given in good faith as supplied but cannot be guaranteed.



# ASTONDOA 68 GLX FLYBRIDGE

## GENERAL

<b>Model</b>	ASTONDOA 68 GLX FLYBRIDGE
<b>Type</b>	motor yacht
<b>LOA (m)</b>	20,26
<b>Beam (m)</b>	5,40
<b>Draft (m)</b>	2,70
<b>Year built</b>	1995
<b>Launched</b>	1995
<b>Builder</b>	Astilleros Astondoa
<b>Country</b>	Spain
<b>CE norm</b>	NA
<b>Hull material</b>	GRP
<b>Hull colour</b>	white White with dark blue stripes
<b>Hull shape</b>	deep-V
<b>Superstructure material</b>	GRP
<b>Rubbing strake</b>	stainless steel
<b>Deck material</b>	GRP
<b>Deck finish</b>	synthetic teak Grey with white stripes
<b>Cockpit deck finish</b>	synthetic teak Grey with white stripes
<b>Antifouling (year)</b>	2024
<b>Window frame</b>	aluminium
<b>Portholes</b>	stainless steel
<b>Flybridge</b>	yes
<b>Flybridge suncover</b>	yes
<b>Radar arch</b>	non collapsible
<b>Fuel tank (litre)</b>	stainless steel 2500
<b>Fuel tank 2 (litre)</b>	stainless steel 2500
<b>Level indicator (fuel tank)</b>	yes
<b>Freshwater tank (litre)</b>	stainless steel 1200
<b>Level indicator (freshwater)</b>	yes
<b>Blackwater tank (litre)</b>	polyethylene 300



# ASTONDOA 68 GLX FLYBRIDGE

Greywater tank (litre)	polyethylene 300
Wheel steering	electric
Inside helm position	yes
Flybridge helm position	electric
More info on paintwork	Refreshed partially 2022 and 2024

## ACCOMMODATION

Cabins	4
Berths	7
Crew cabin	1+1 with bathroom, bow
Crew berths	2
Interior	maple Bird's eye maple
Floor	wood
Air-conditioning	reverse cycle airco
Navigation center	yes
Sliding door to cockpit	yes
Galley	yes
Countertop	granite
Sink	stainless steel Double
Cooker	ceramic
Oven	Electric
Extractor	yes
Microwave	yes
Fridge	yes
Freezer	yes
Water pressure system	electrical
Dishwasher	yes
Ice maker	yes
Coffee maker	yes
Crockery	yes
Owners cabin	double bed



# ASTONDOA 68 GLX FLYBRIDGE

Wardrobe	hanging/drawers/shelves
Bathroom	en suite
Toilet	en suite
Toilet system	vacuum
Wash basin	in the bathroom
Shower	en suite
Guest cabin 1	double bed
Wardrobe	hanging/drawers/shelves
Toilet	en suite
Toilet system	vacuum
Wash basin	in the bathroom
Shower	en suite
Guest cabin 2	twin single
Wardrobe	hanging/drawers/shelves
Bathroom	en suite
Toilet	en suite
Toilet system	vacuum
Shower	en suite
Guest cabin 3	single bed
Wardrobe	hanging/drawers/shelves
Toilet	en suite
Toilet system	vacuum
Wash basin	in the bathroom
Shower	en suite
Washing machine	yes
Flybridge	yes

## MACHINERY

No of engines	2
Make	MAN
HP	2399



# ASTONDOA 68 GLX FLYBRIDGE

<b>kW</b>	1765.66
<b>Fuel</b>	diesel
<b>Year installed</b>	1995
<b>Year of overhaul</b>	2019
<b>Engine hours</b>	1700
<b>Drive</b>	shaft
<b>Shaft seal</b>	2019 new
<b>Engine controls</b>	electrical
<b>Propeller type</b>	fixed
<b>Propeller shaft material</b>	stainless steel
<b>Electric bilge pump</b>	yes
<b>Bilge alarm</b>	yes
<b>Electrical installation</b>	yes
<b>Generator</b>	wet exhaust Onan
<b>Batteries</b>	2021 new
<b>Start battery</b>	2021 new
<b>Service battery</b>	2021 new
<b>Generator battery</b>	2021 new
<b>Battery charger</b>	yes
<b>Inverter</b>	yes
<b>Shorepower</b>	with cable
<b>Trimtabs</b>	yes

## NAVIGATION

<b>Compass</b>	yes
<b>Electric compass</b>	yes
<b>Log</b>	yes
<b>VHF</b>	yes
<b>Autopilot</b>	yes
<b>Radar</b>	yes
<b>GPS</b>	yes



# ASTONDOA 68 GLX FLYBRIDGE

Plotter	yes
Wifi antenna	yes
AIS transceiver	yes
Radio receiver	yes
Navigation lights	yes
Searchlight	yes
Loudhailer	yes

## EQUIPMENT

Bimini	On Flybridge
Cockpit table	yes
Cockpit chairs	yes
Bathing platform	yes
Boarding ladder	yes
Transom door	yes
Gangway	Hydraulic, telescopic
Deck shower	yes
Anchor	Newly galvanized 2022
Anchor chain	Newly galvanized 2022
Windlass	electrical
Capstan	yes
Dinghy	New 2022
Outboard	Yamaha 20HP
Deck crane	hydraulic
Life raft	container 2 units
Lifejackets	yes
Wiper	yes
Fenders	New 2022
Mooring lines	yes
TV	yes
Satellite	Starlink



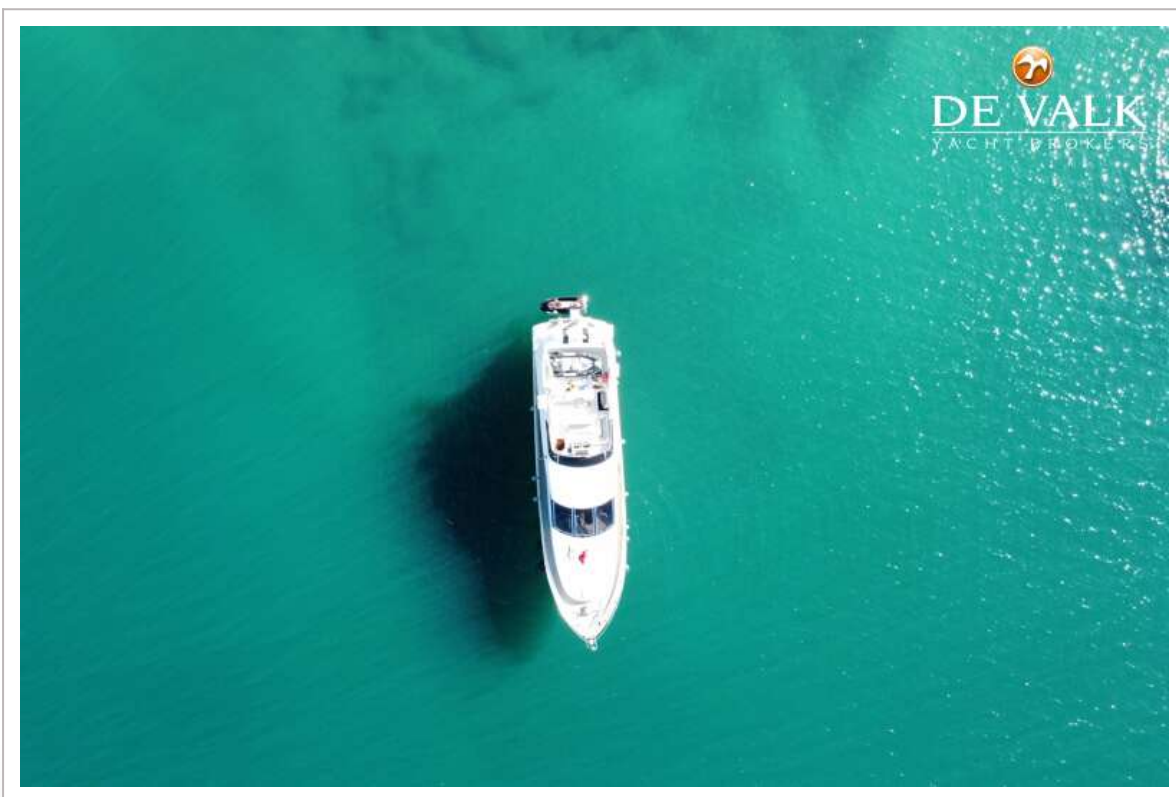
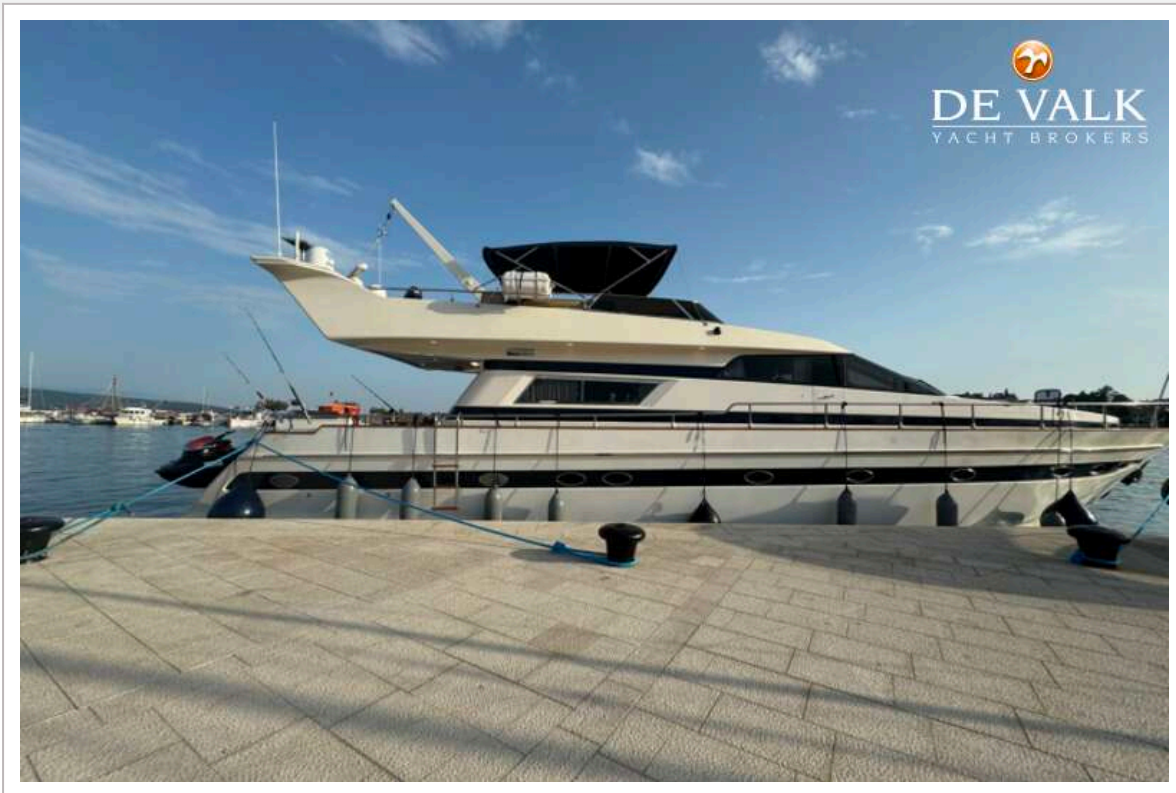
# ASTONDOA 68 GLX FLYBRIDGE

TracVision ball	yes
Radio-cd player	yes
Surround Sound System	yes
Fire extinguisher	yes
Extinguisher in engine room	yes

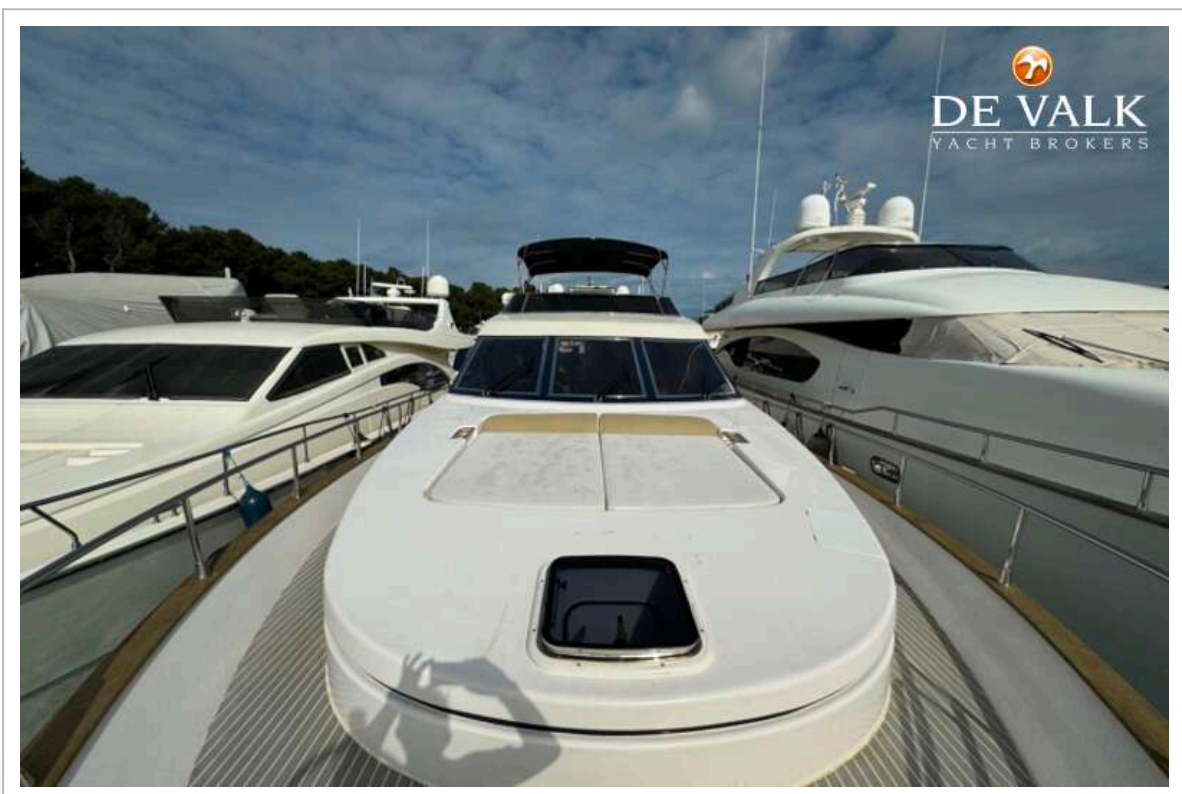




# ASTONDOA 68 GLX FLYBRIDGE



# ASTONDOA 68 GLX FLYBRIDGE





# ASTONDOA 68 GLX FLYBRIDGE

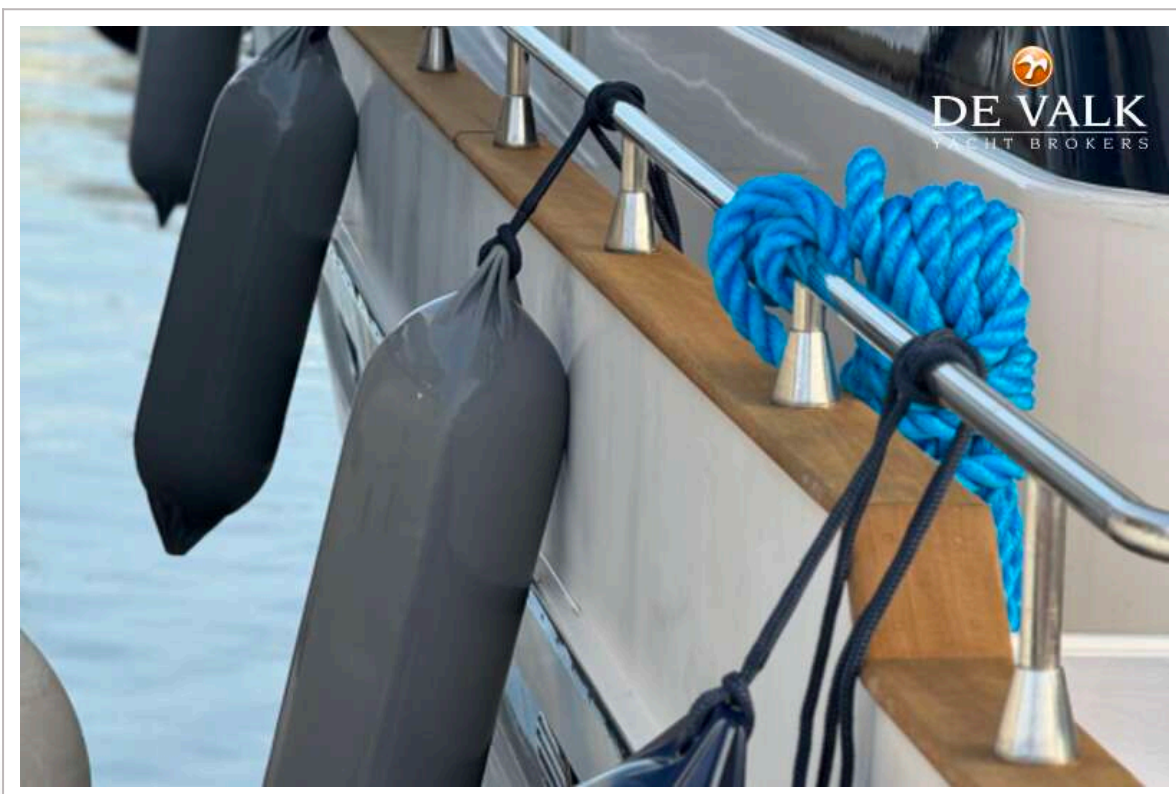
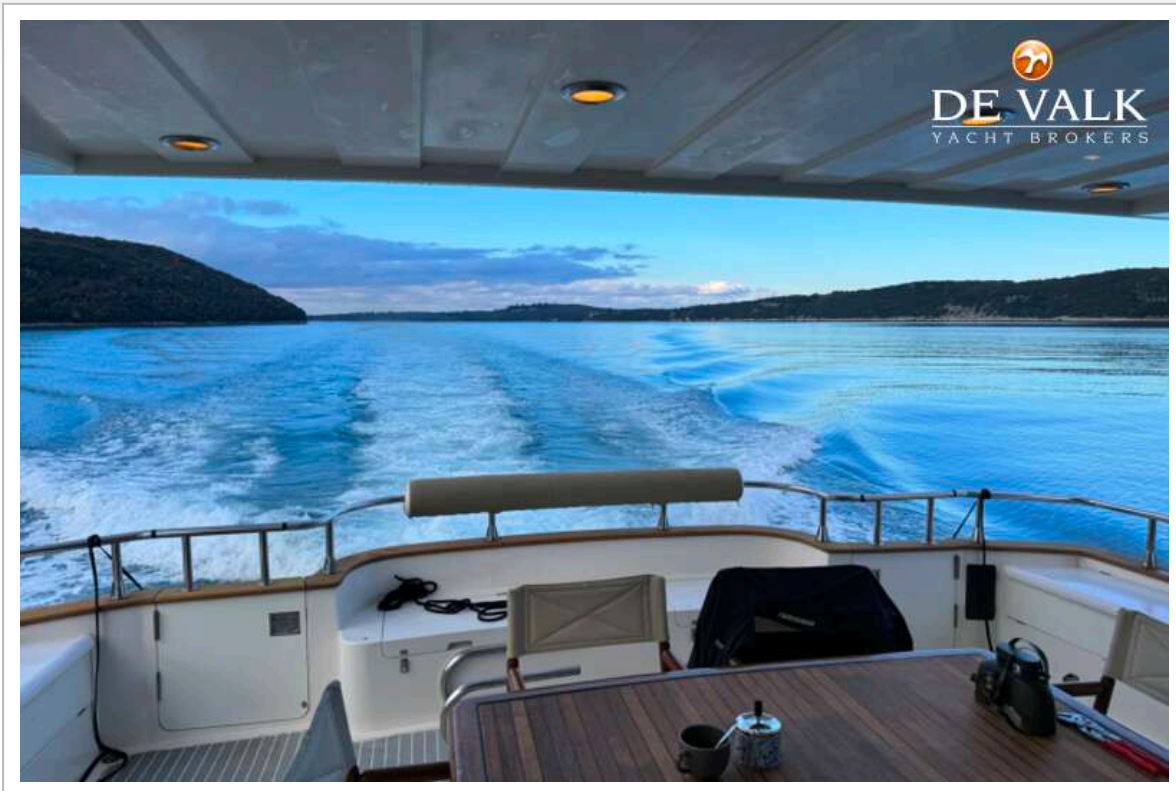


# ASTONDOA 68 GLX FLYBRIDGE

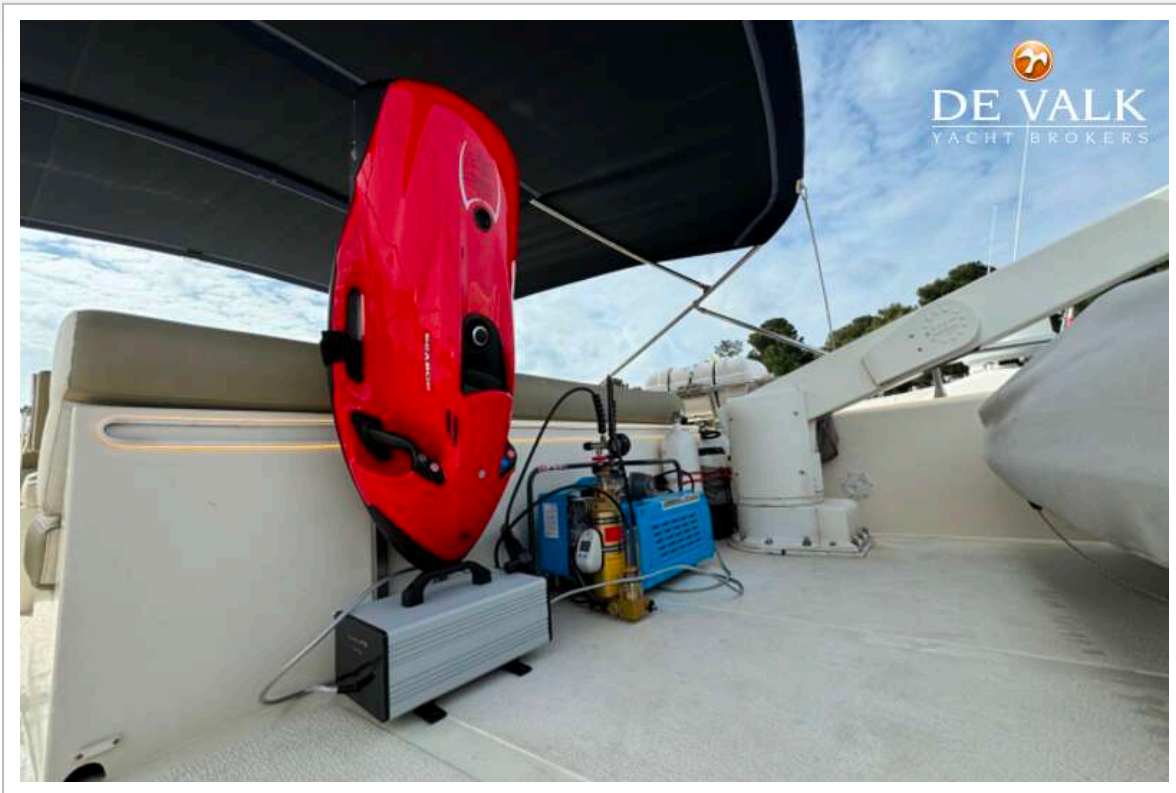




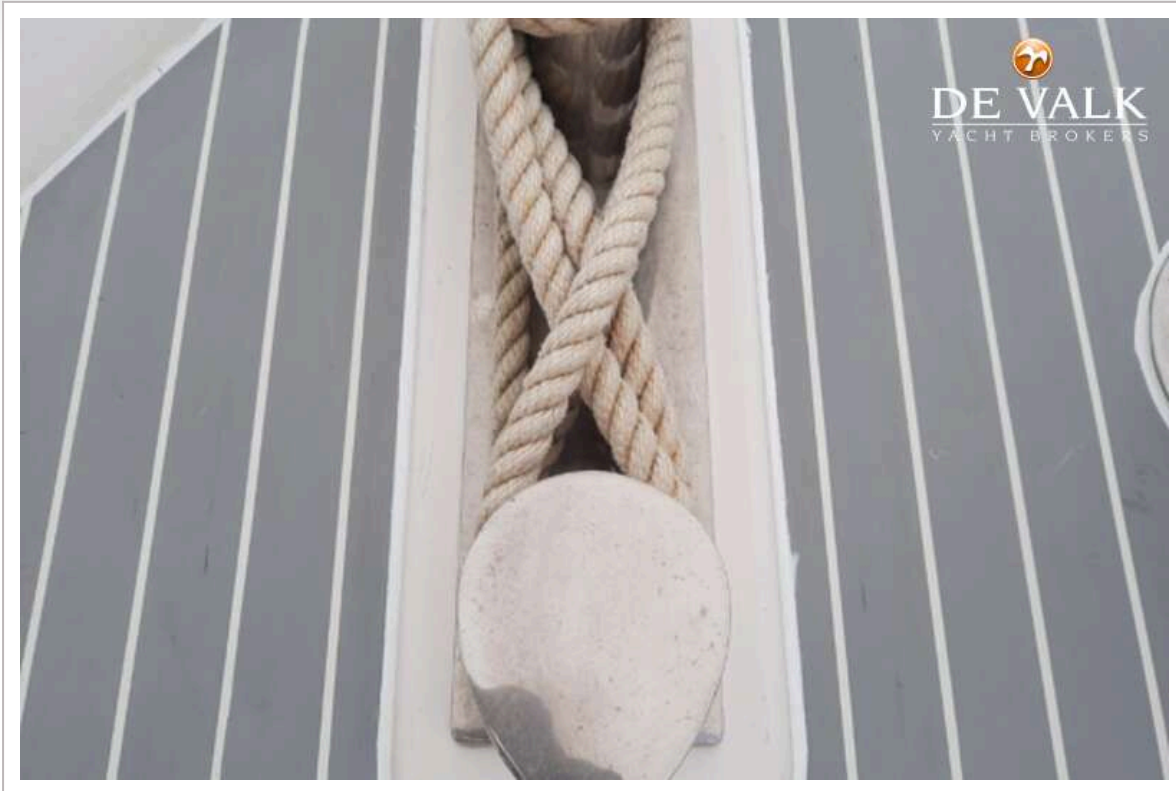
# ASTONDOA 68 GLX FLYBRIDGE



# ASTONDOA 68 GLX FLYBRIDGE

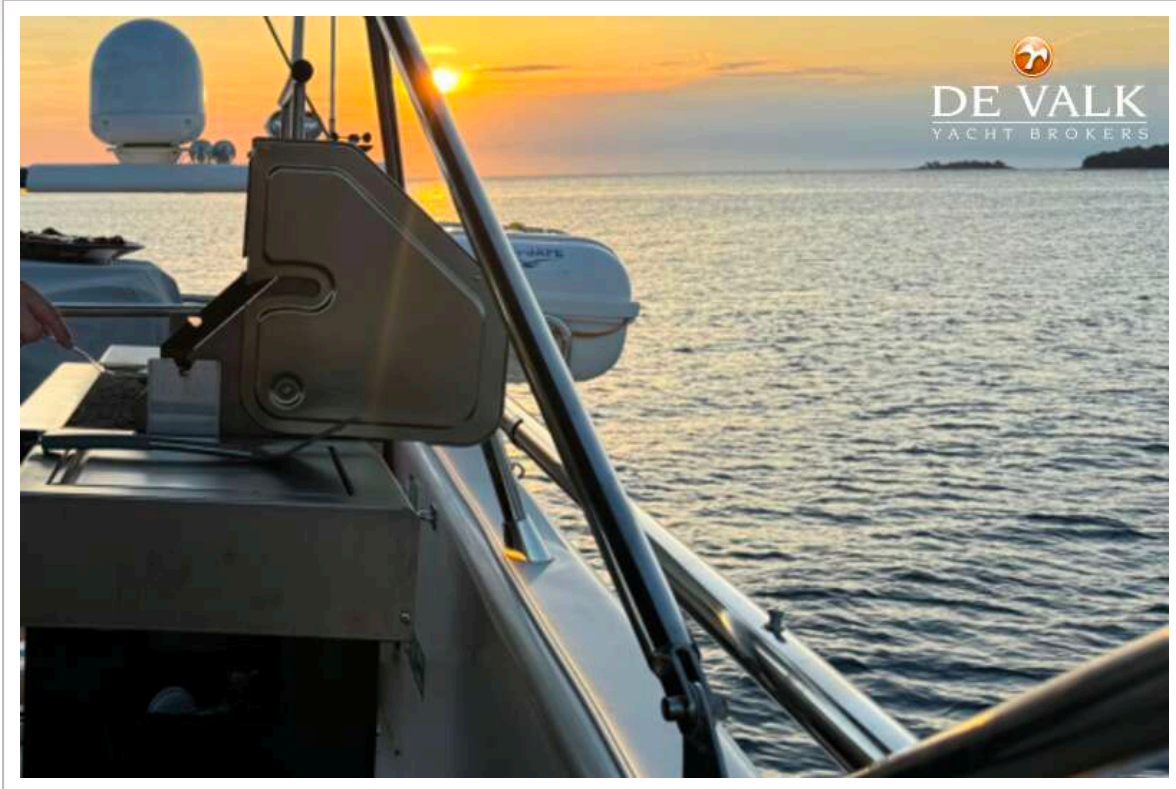


# ASTONDOA 68 GLX FLYBRIDGE



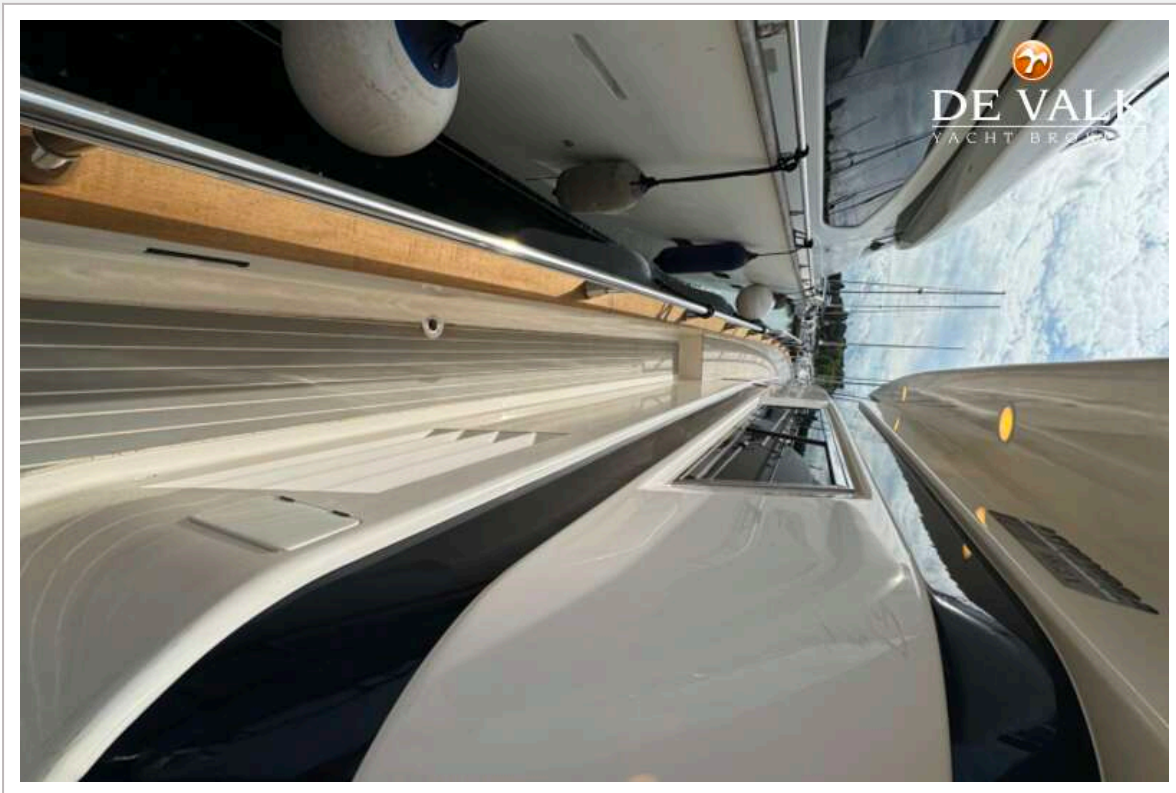


# ASTONDOA 68 GLX FLYBRIDGE

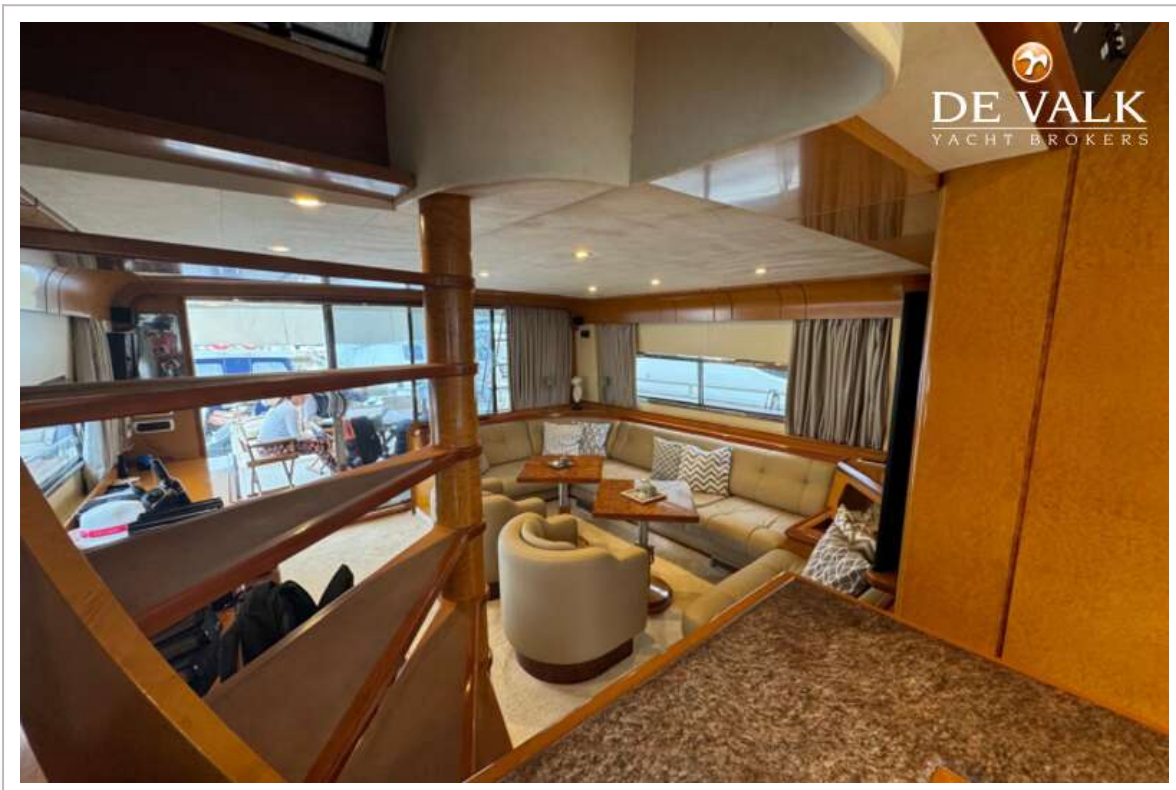
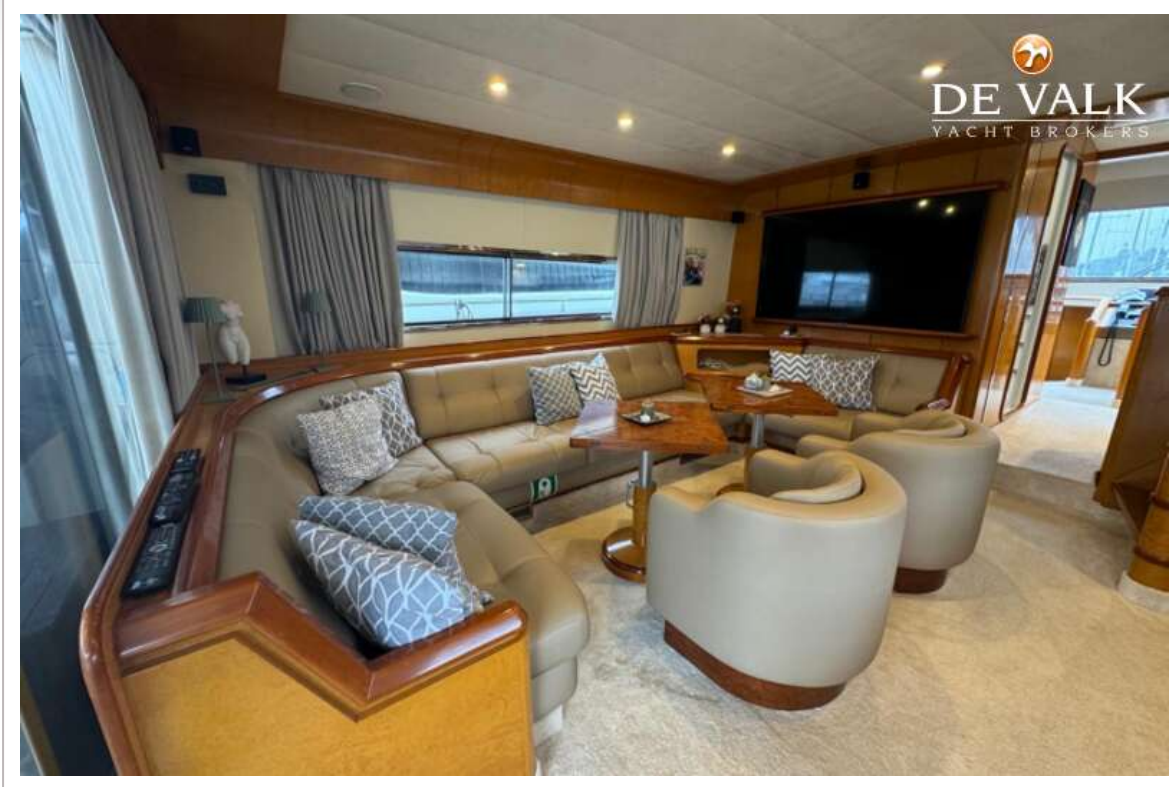




# ASTONDOA 68 GLX FLYBRIDGE

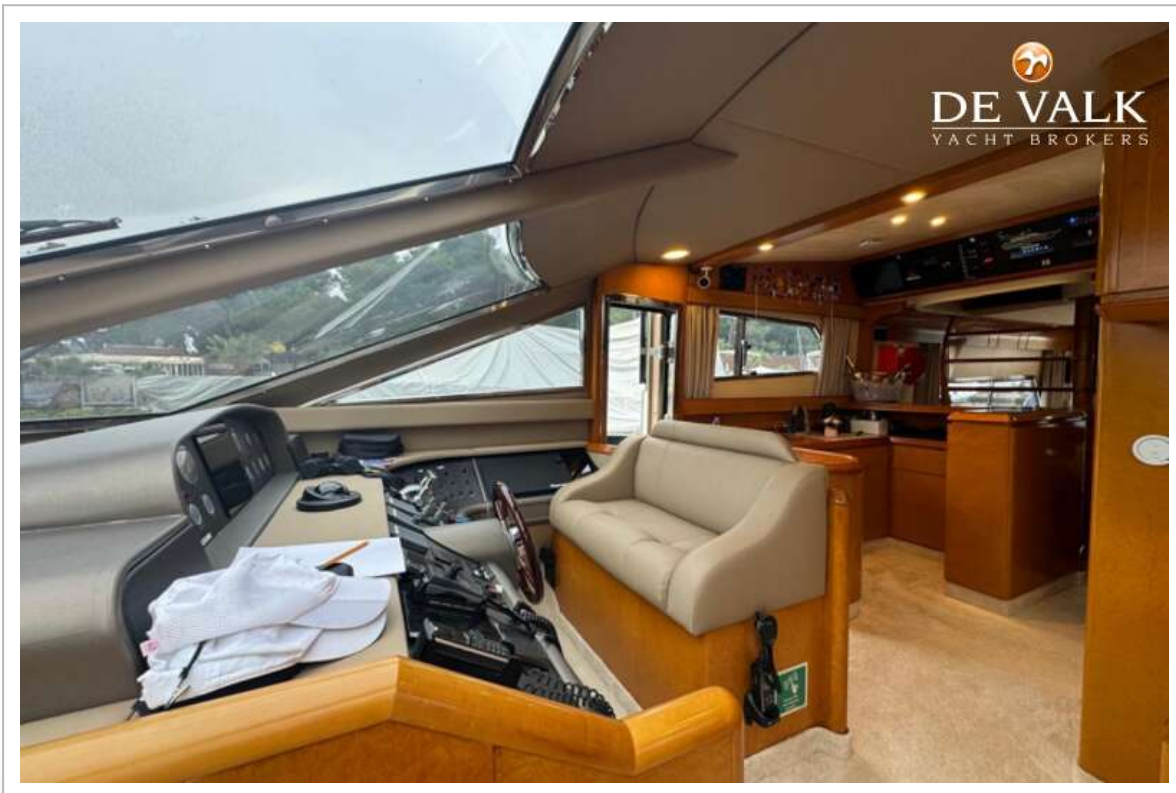
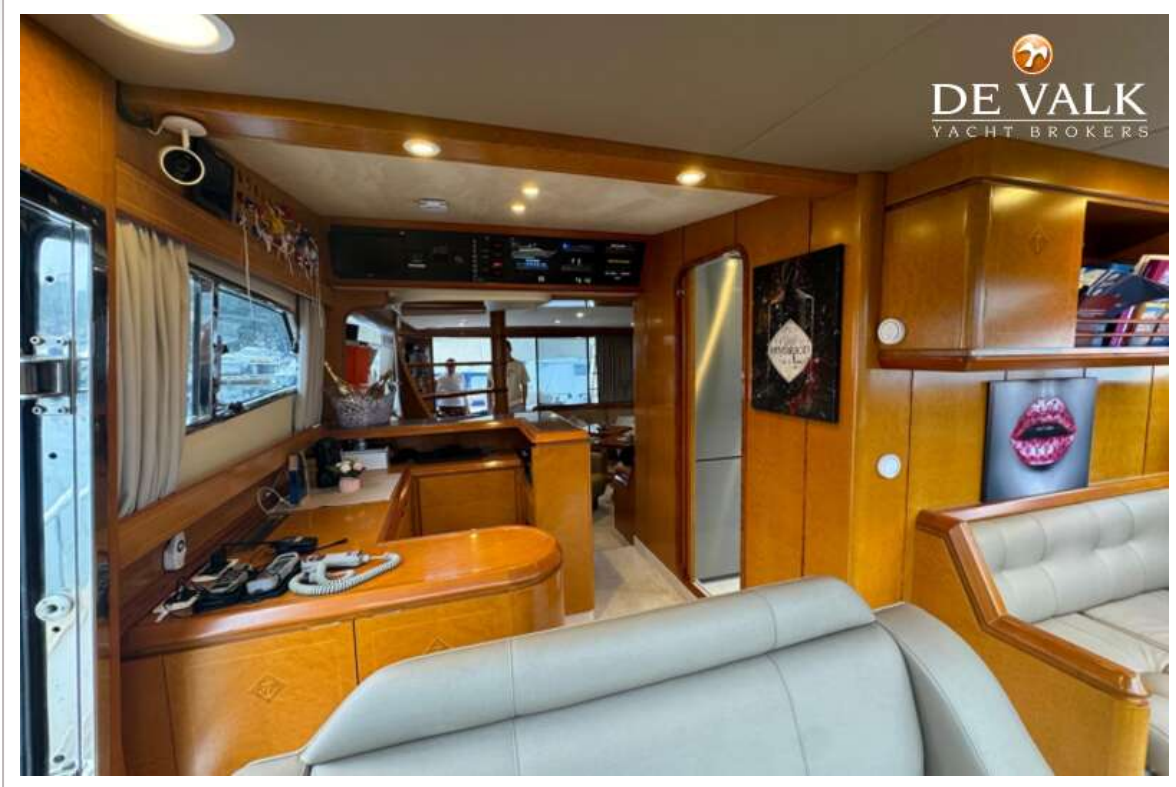


# ASTONDOA 68 GLX FLYBRIDGE

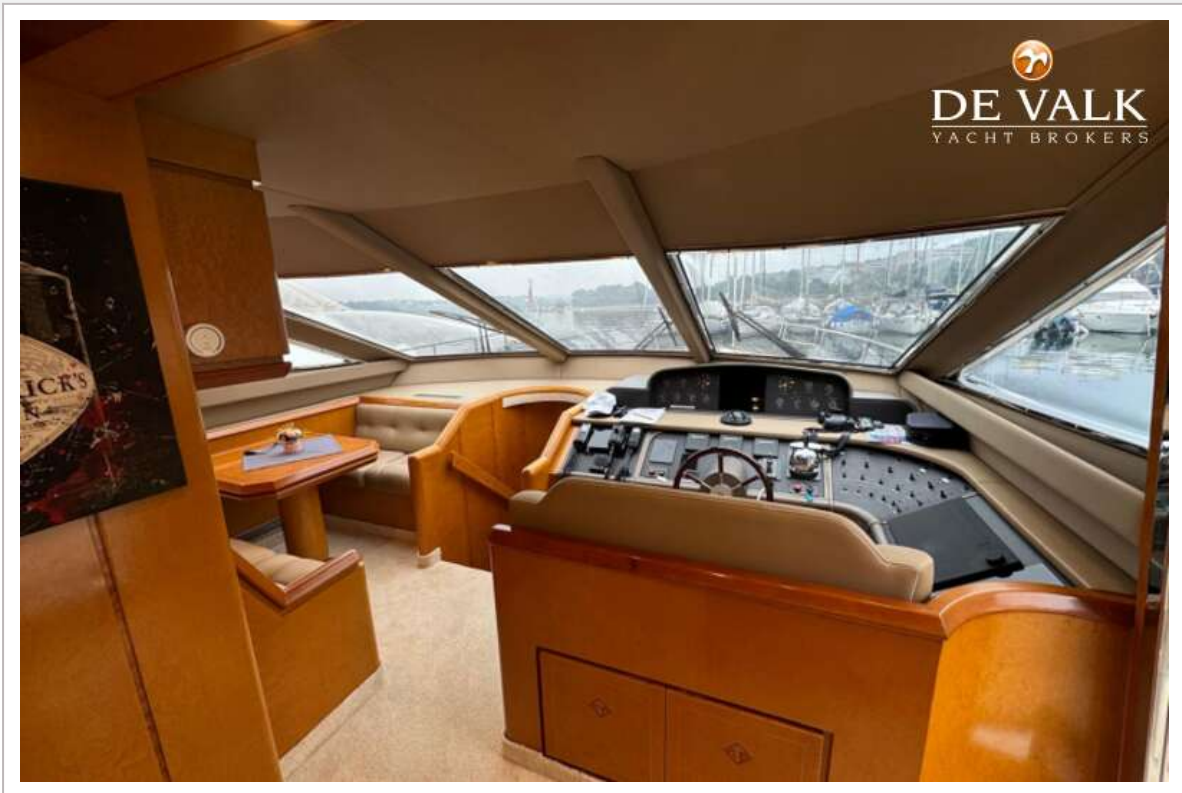




# ASTONDOA 68 GLX FLYBRIDGE

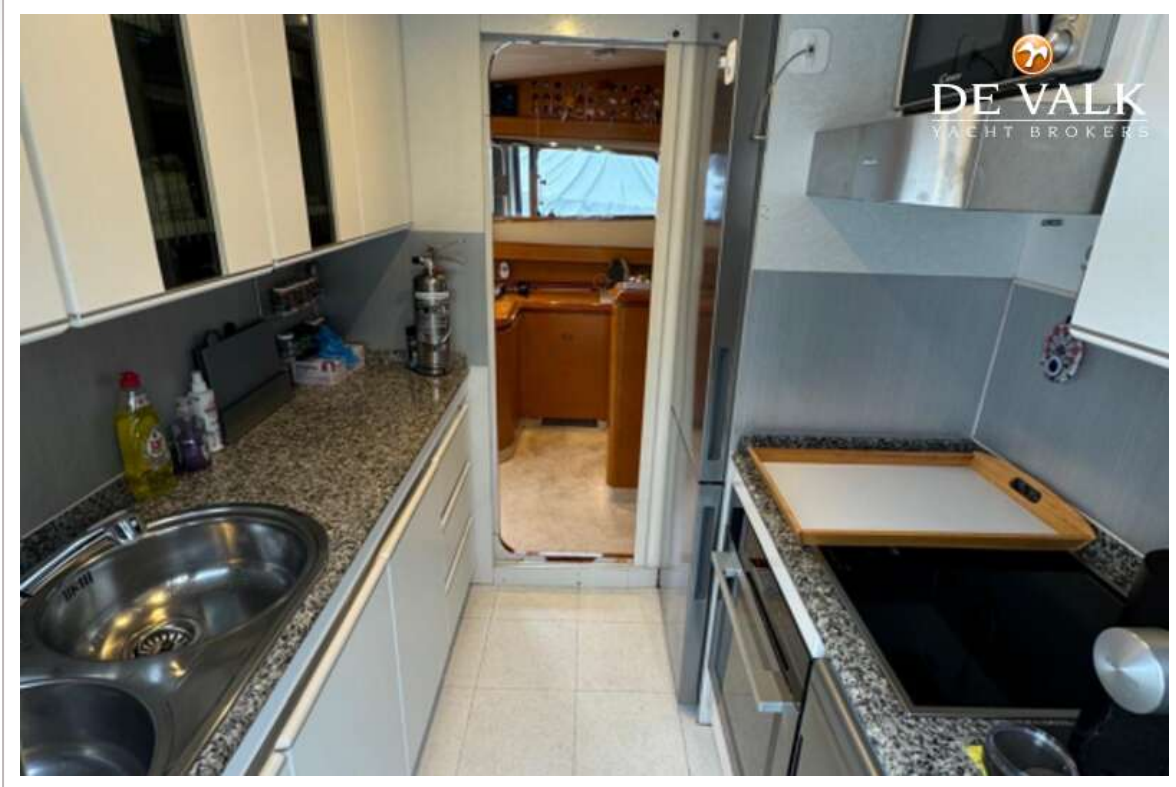


# ASTONDOA 68 GLX FLYBRIDGE

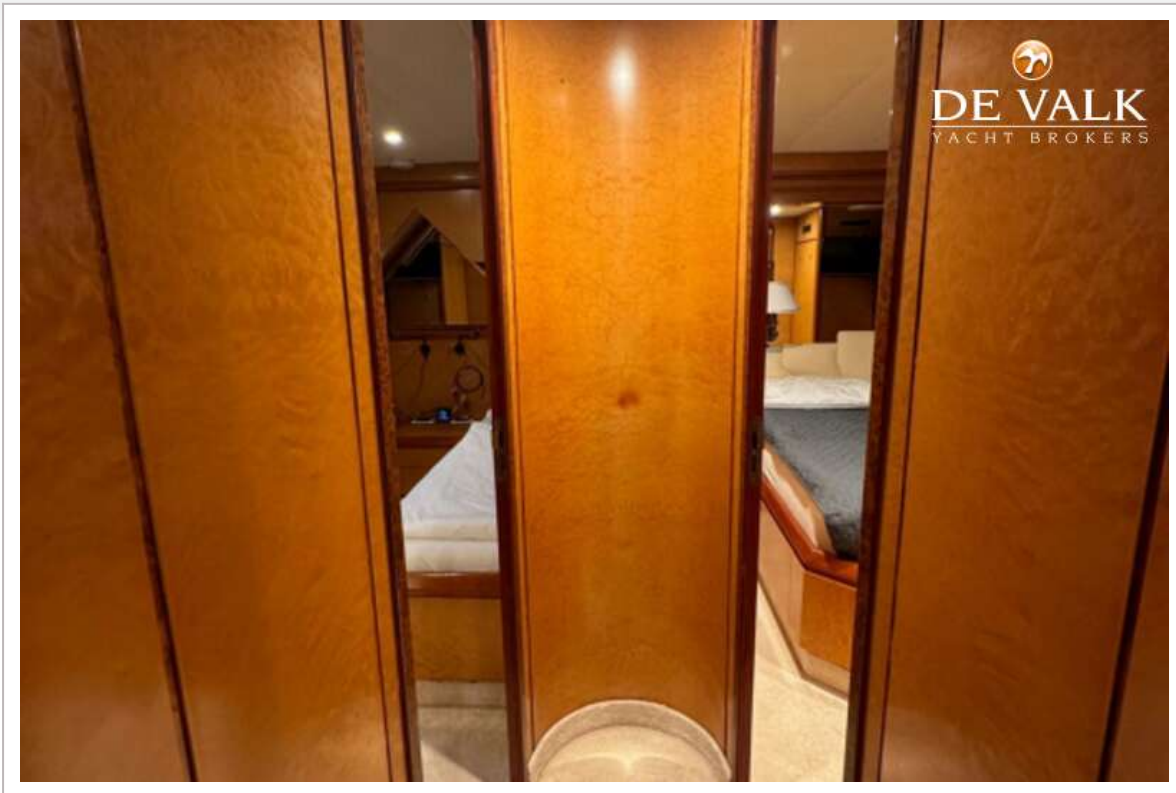




# ASTONDOA 68 GLX FLYBRIDGE



# ASTONDOA 68 GLX FLYBRIDGE

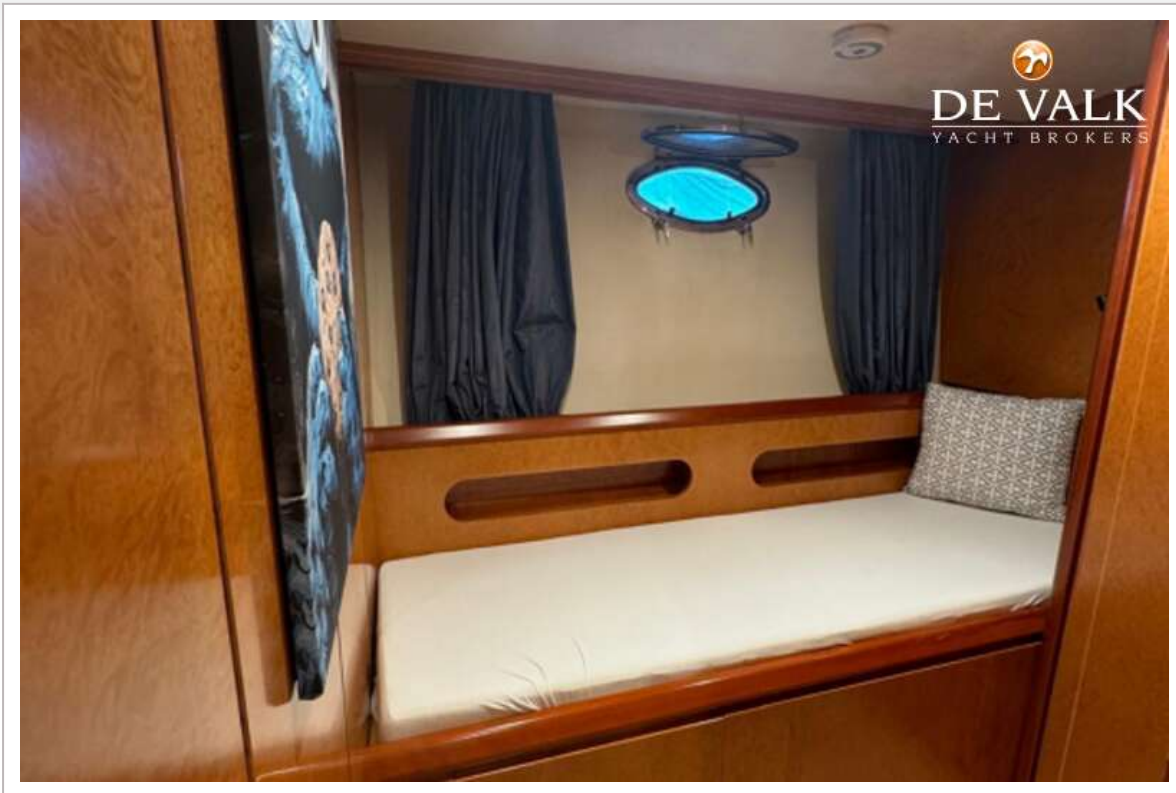




# ASTONDOA 68 GLX FLYBRIDGE

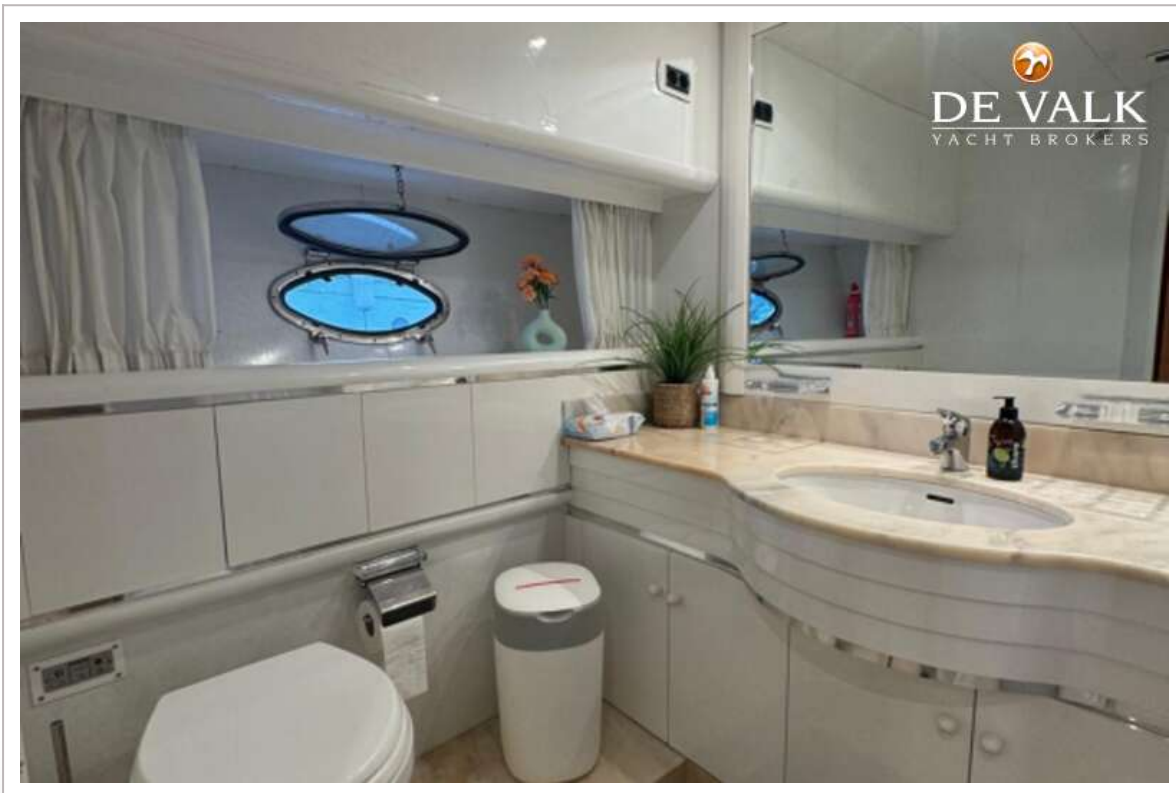


# ASTONDOA 68 GLX FLYBRIDGE





# ASTONDOA 68 GLX FLYBRIDGE



# ASTONDOA 68 GLX FLYBRIDGE

