



DE VALK
YACHT BROKERS



TASWELL 49 ALL SEASONS



DE VALK
YACHT BROKERS

TASWELL 49 ALL SEASONS

BROKER'S COMMENTS

The Taswell 49, Bill Dixon designed, was built in two versions. This is the All Season version with the full deck saloon. Where many yacht claim to be a deck saloon yacht, they are often not. Fitting just bigger windows does not make a deck saloon. Ta Shing has been building boats since the late 1970s and is considered to be one of the higher-quality boat builders in the world. The Taswell is also both fast and seaworthy. Taswells are fantastic offshore boats and can be found cruising all over the world. In the last three years equipment onboard Hai Lan was seriously upgraded.

Miha Spendal

SPECIFICATIONS

Dimensions	14.88 x 4.57 x 1.65 (m)	Builder	Ta Shing Yacht Building Ltd.
Built	1992	Cabins	3
Material	GRP	Berths	6
Engine(s)	1 x Yanmar 4 LH-TE diesel	Hp/Kw	110.00 (hp), 80.96 (kw)
Asking price	sold (VAT)	Lying	at sales office

CONTACT

Sales office	De Valk Istria	Telephone	+386 (1) 600 2704
Address	(Marina Izola) Dantejeva Ulica 22 6310 Izola SI	E-mail	istria@devalk.nl

DISCLAIMER

These particulars are given in good faith as supplied but cannot be guaranteed.



TASWELL 49 ALL SEASONS

GENERAL

Model	TASWELL 49 ALL SEASONS
Type	sailing yacht
LOA (m)	14,88
LWL (m)	12,78
Beam (m)	4,57
Draft (m)	1,65
Air draft (m)	21,50
Headroom (m)	2,00
Year built	1992
Launched	1992
Builder	Ta Shing Yacht Building Ltd.
Country	Taiwan
Designer	Bill Dixon
Displacement (t)	14,7
Ballast (tonnes)	lead 5,9
Hull material	GRP
Hull colour	white
Hull shape	round-bilged
Keel type	fin keel
Superstructure material	GRP
Rubbing strake	+ stainless steel
Deck material	GRP
Deck finish	teak Teak deck new 2018
Superstructure deck finish	teak Teak new 2018
Cockpit deck finish	teak Teak new 2018
Antifouling (year)	2024
Dorades	4x stainless steel
Window frame	stainless steel
Window material	tempered glass
Deckhatch	7x



TASWELL 49 ALL SEASONS

Portholes	stainless steel
Fuel tank (litre)	steel 2x 500 ltr.
Level indicator (fuel tank)	2x
Freshwater tank (litre)	stainless steel 2x 400 ltr.
Level indicator (freshwater)	2x
Wheel steering	Yes
Inside helm position	Yes
Outside helm position	Yes
Emergency tiller	stainless steel

ACCOMMODATION

Cabins	3
Berths	6
Interior	teak
Layout	All Seasons version
Floor	teak and holly
Pilot house/deck saloon	U-shaped settee with panoramic deck salon windows provide excellent visibility.
Saloon	New covers on saloon settees
Heating	diesel ducted hot air 2x Webasto
Air-conditioning	Marine air system, 2 units
Navigation center	yes
Chart table	yes
Aft Cabin	Owners cabin
Galley	with dinette
Countertop	Duropol
Sink	stainless steel Double stainless steel, new faucets (2021)
Cooker	calor gas Force10 - 3 burner with propane control.
Oven	In cooker
Extractor	Kitchen hood 220V
Microwave	yes



TASWELL 49 ALL SEASONS

Fridge	1x Grunert top loader, 1x top+front. Also engine power take-off
Freezer	In fridge. Tecumseh 3520W / 220V, Also engine power take-off
Hot water system	220V
Water pressure system	electrical Whale Gulper 220 (2021)
Manual and/or foot pump	Seawater tap. electric pump, 2023
Owners cabin	double bed Aft cabin
Bed length (m)	2.05 x 1.60 mtr. new covers on mattresses (2023)
Wardrobe	hanging/drawers/shelves
Bathroom	en suite
Toilet	en suite VacuFlush
Toilet system	vacuum
Wash basin	Yes
Shower	Yes
Guest cabin 1	v-bed
Bed length (m)	2.00 x 1.50 mtr. new covers on mattresses (2023)
Wardrobe	yes
Bathroom	en suite
Toilet	en suite
Toilet system	vacuum
Wash basin	New faucet (2021)
Shower	en suite
Guest cabin 2	bunk bed
Bed length (m)	2.00 x 0.65/0.60
Wardrobe	yes
Bathroom	shared
Toilet	VacuFlush
Toilet system	vacuum
Wash basin	Yes
Shower	Yes

MACHINERY



TASWELL 49 ALL SEASONS

No of engines	1
Make	Yanmar
Type	4 LH-TE
HP	110
kW	80.96
Fuel	diesel
Year installed	1992
Maximum speed (kn)	8
Cruising speed (kn)	7
Engine hours	920
Engine cooling system	freshwater heat exchanger
Drive	shaft
Engine controls	electrical MicroCommander
Gearbox	mechanical
Bowthruster	electric Side Power / Sleipner SE 120/24V (2024)
Exhaust	watercooled
Propeller type	feathering MaxProp
Propeller blades	3
Propeller shaft material	stainless steel
Shaft lubrication	water
Manual bilge pump	yes
Electric bilge pump	Whale Gulper 320 (2024)
Bilge alarm	yes
Electrical installation	12 /24 / 220 Volt
Generator	Onan 6,5kw
Running hours generator	220
Batteries	Hydraulic system batteries (24 V): 4 x 145 Ah / 12V (2024)
Start battery	2 x 140 Ah / 12V (2022)
Service battery	4 x 100 Ah + 1 x 200 Ah / 12V (2022)
Bowthruster battery	2 x 100 Ah / 12V (2022)
Battery monitor	Mastervolt, 2022
Battery charger	Mastervolt 150A / 12V, Mastervolt 90A / 12V, 2022



Inverter	Mastervolt Mac Plus DC-DC,converter 12 / 24V - 30A, 2022
Battery charger/inverter	Mastervolt - Mass Combi Pro 12/3000 Inverter/Charger / 150A /12V
Shorepower	with cable
Insulation transformer	2 x Victron Argo Fet battery isolator 12V / 3 banks
Watermaker	Aquatec AC 110 220 V/ 120 l/h (2021)

NAVIGATION

Compass	C.Plath
Electric compass	Autohelm Compass
Depth sounder	Raymarine Element 7S Chirp Sonar-MFD
Log	Autohelm Speed
Windset	Autohelm Wind
Repeater	Autohelm Multi inside Autohelm Multi outside 2 x Raytheon i70 Multifunctional Cor Display
VHF	Raymarine RAY240E, , antenna top of mast + second Glomex VHF ant
Autopilot	+ 2 x Raytheon P70 S colour Autop Raytheon EV 200 Sail-Hydraulic
Rudder angle indicator	yes
Radar	Raymarine
GPS	Raytheon RS150 GPS Receiver
Plotter	Raymarine E120 inside, Raymarine E80 outside
Radar/GPS/plotter	Raymarine E120 inside Raymarine E80 outside
Navtex	ICS Nav 6
Electronic chart(s)	Navionics Mediterranean & Black sea XG
Navigation lights	yes

EQUIPMENT

Fixed windscreen	yes
Sprayhood	yes
Bimini	2 biminis, new 2024



TASWELL 49 ALL SEASONS

Cockpit cushions	yes
Cockpit table	yes
Bathing platform	yes
Boarding ladder	stainless steel
Gangway	Norderney 2,2m (3 x collapsible)
Deck shower	C/w water on stern
Anchor	Delta Lewmar 30 kg - stainless steel
Anchor chain	50 m / 10 mm - stainless steel
Anchor 2	Bruce 20 kg - stainless steel
Chain counter	Quick QNC CHC control panel
Windlass	electrical Maxwell 3500
Capstan	yes
Deck crane	Lift for outboard engine (30kg)
Sea railing	wire - stainless steel
Grab rail (superstructure)	stainless steel
Railing side opening gates	yes
Pushpit	With flip chairs
Pulpit	yes
Life raft	container 6 persons. To be revised
Rope cutter	yes
Horn	RR Electronic
Radar reflector	yes
Fenders	yes
Mooring lines	yes
TV	Smart TV 45" + DVB-TR antenna
Radio	3x, Kenwood, Panasonic
Surround Sound System	yes
Cockpit speakers	yes
Speakers in salon	yes
Speakers in cabin	yes
Clock - barometer	yes
Fire extinguisher	yes



RIGGING

Rigging	yes
Standing rigging	wire
Material mast	aluminium coated
Spreaders	2 pair
Keel stepped mast	yes
Mainsail	One Sails 2024, 44,7m2
Stoway mast	Reckmann - Hydraulic
Genoa	Halsey UK sailmakers
Genoa furler	Reckmann - Hydraulic
Gennaker	2022, One Sails, 165m2
Spinnaker	180m2
Staysail	Halsey UK sailmakers
Staysail furler	Reckmann - Hydraulic
Self tacking jib installation	yes
Reefing System	main in-mast furling
Backstay adjuster	Navtec hydraulic pump
Boomvang	gasspring
Primary sheet winch	2x Andersen - Reckmann 56 / two speed / Hydraulic
Secondary sheet winch	2x Andersen - Reckmann 56 / two speed / Hydraulic
Halyard winches	2x Andersen 46 two speed and one Andersen 40 two speed on mast.
Spi-pole	aluminium On mast



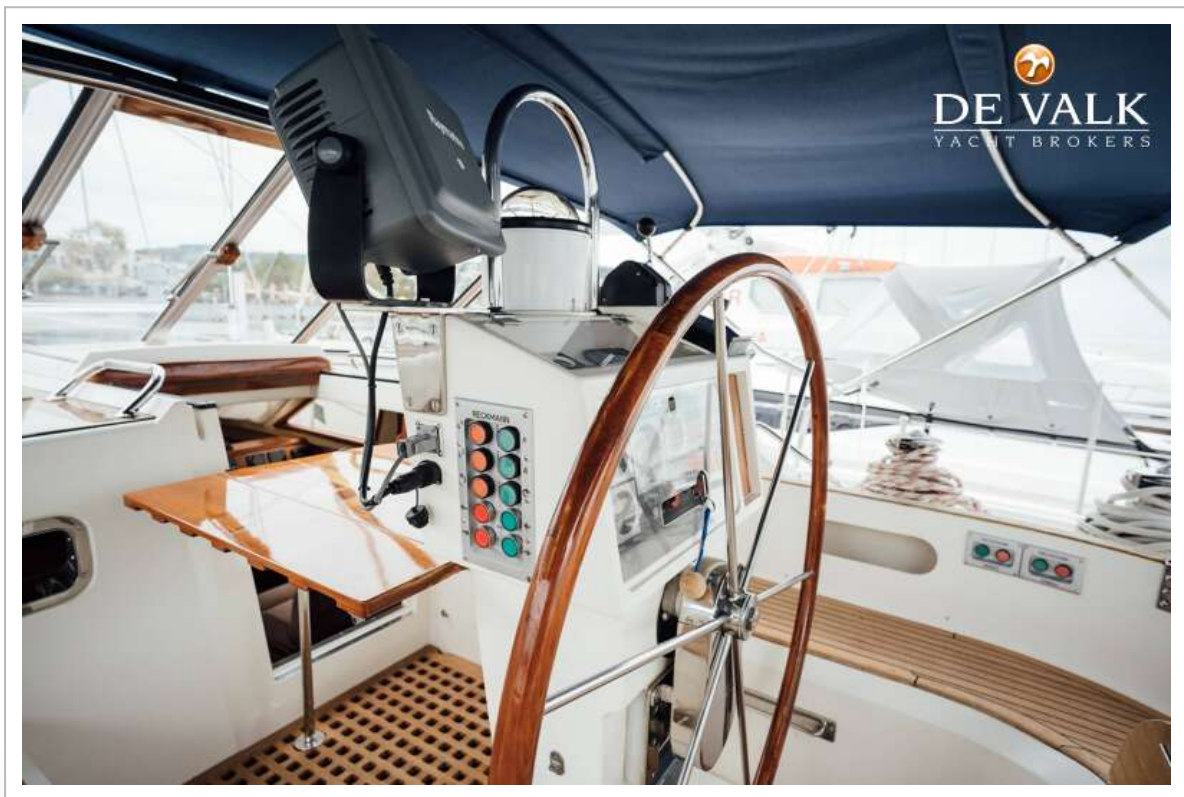
TASWELL 49 ALL SEASONS



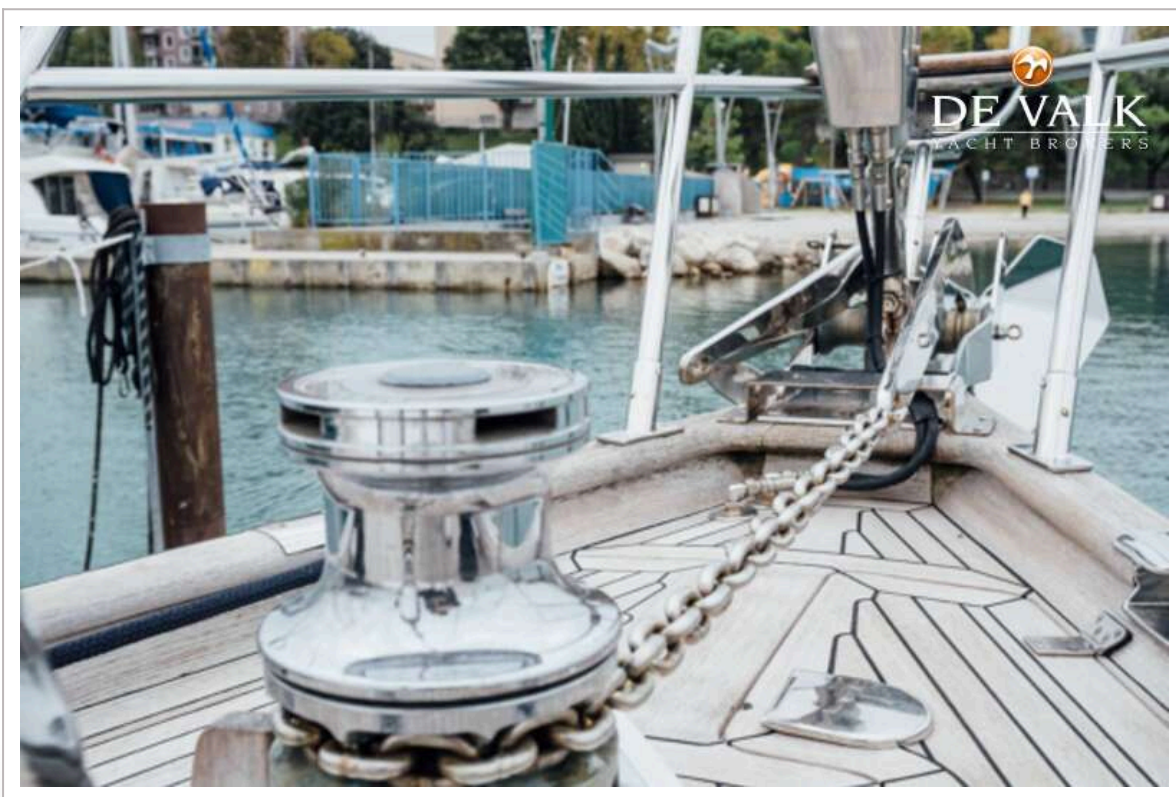
TASWELL 49 ALL SEASONS



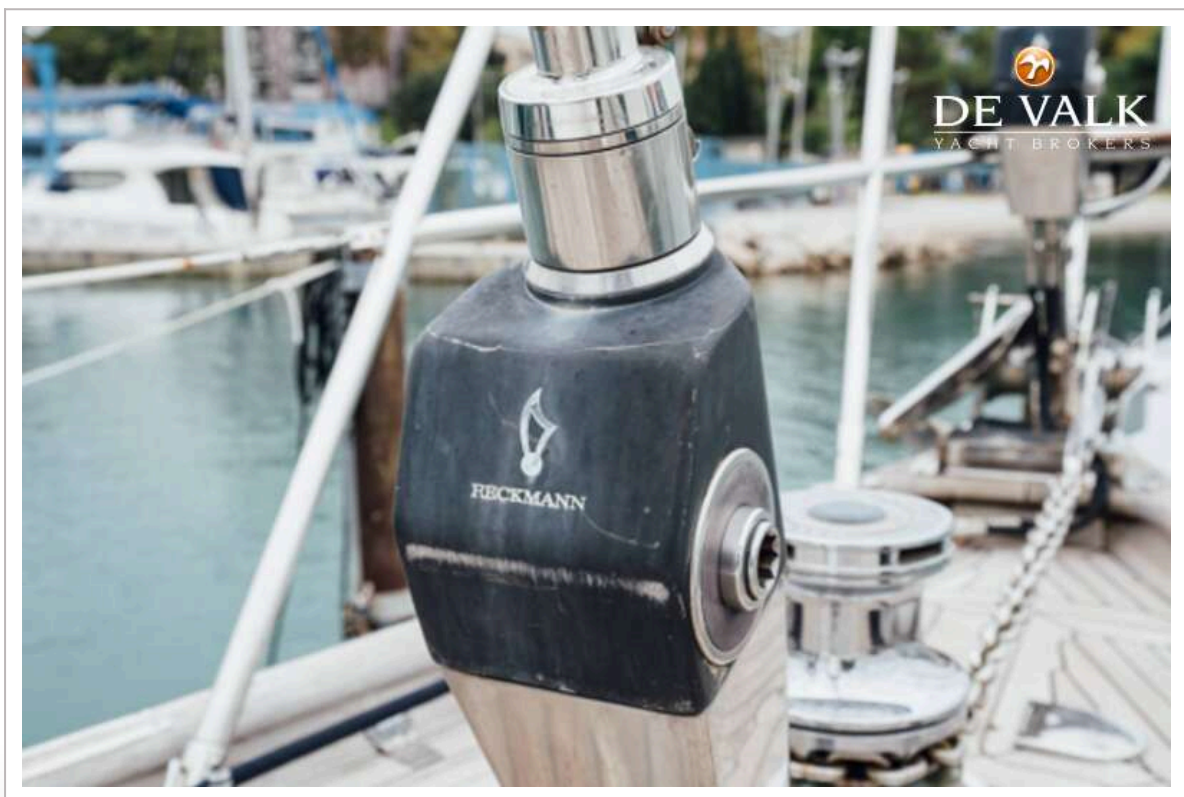
TASWELL 49 ALL SEASONS



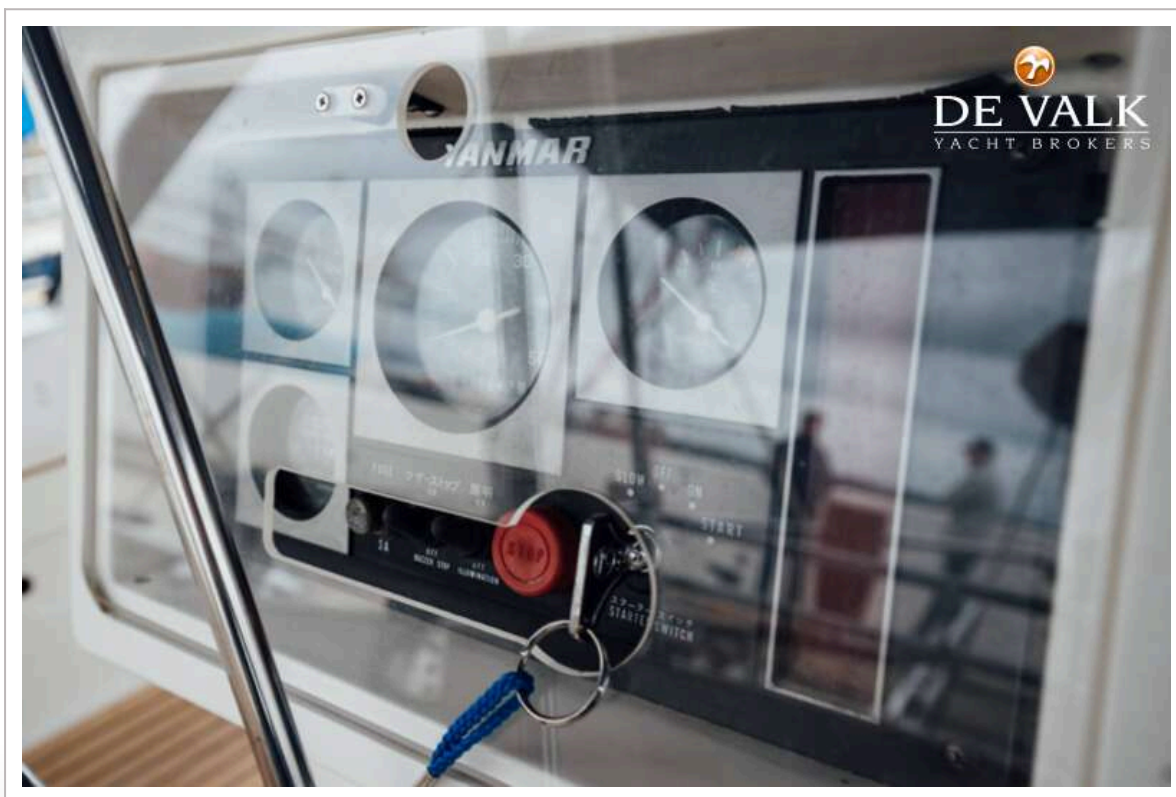
TASWELL 49 ALL SEASONS



TASWELL 49 ALL SEASONS



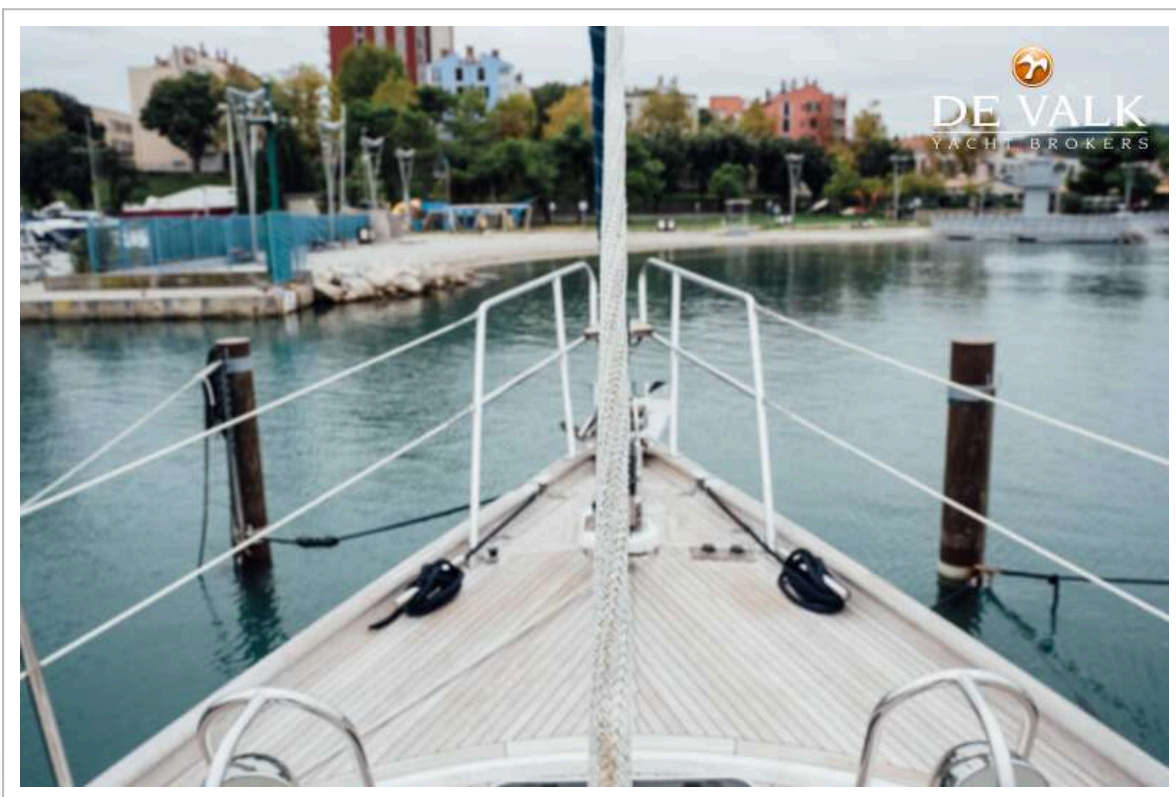
TASWELL 49 ALL SEASONS



TASWELL 49 ALL SEASONS



TASWELL 49 ALL SEASONS



TASWELL 49 ALL SEASONS



TASWELL 49 ALL SEASONS



TASWELL 49 ALL SEASONS



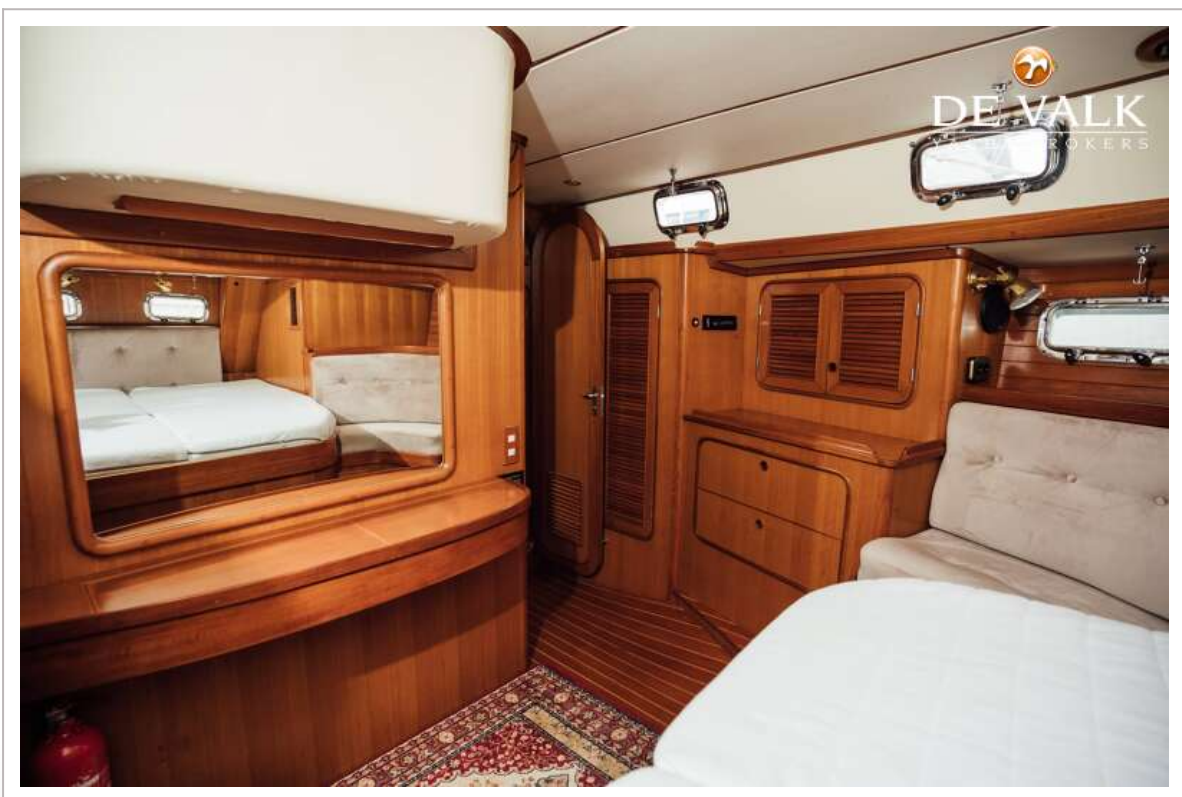
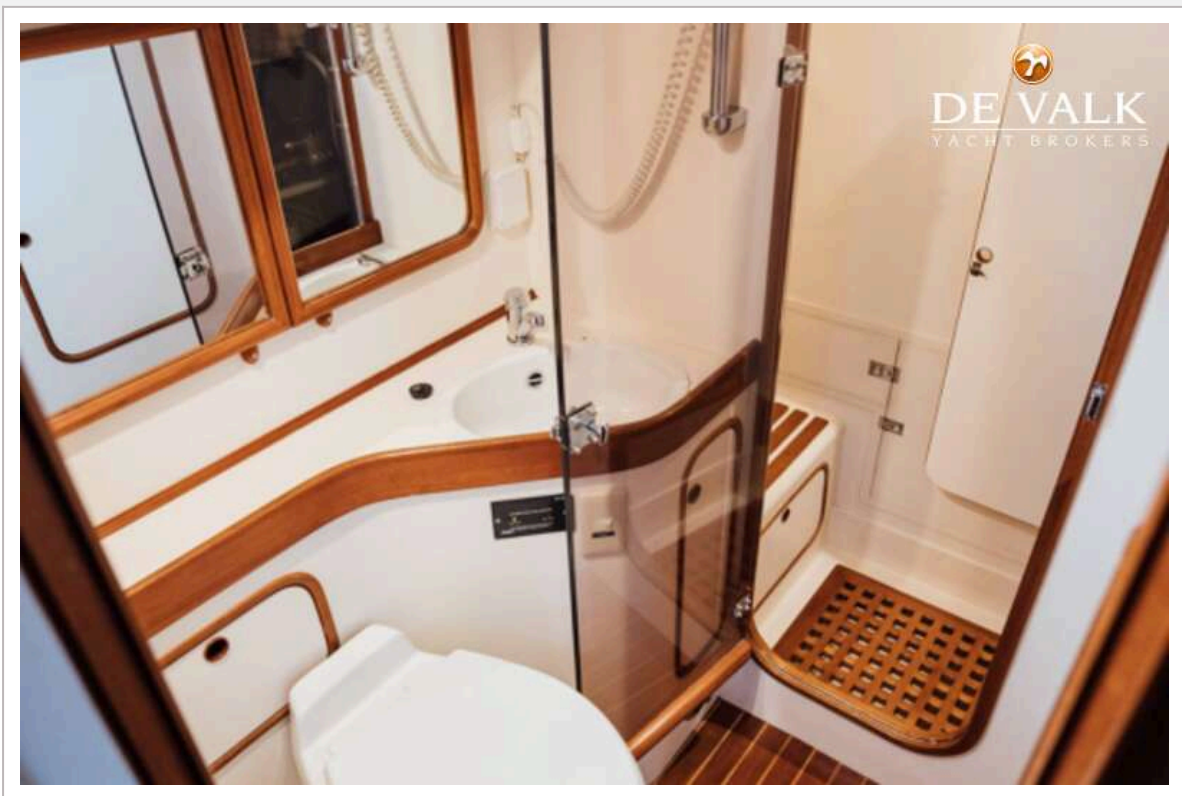
TASWELL 49 ALL SEASONS



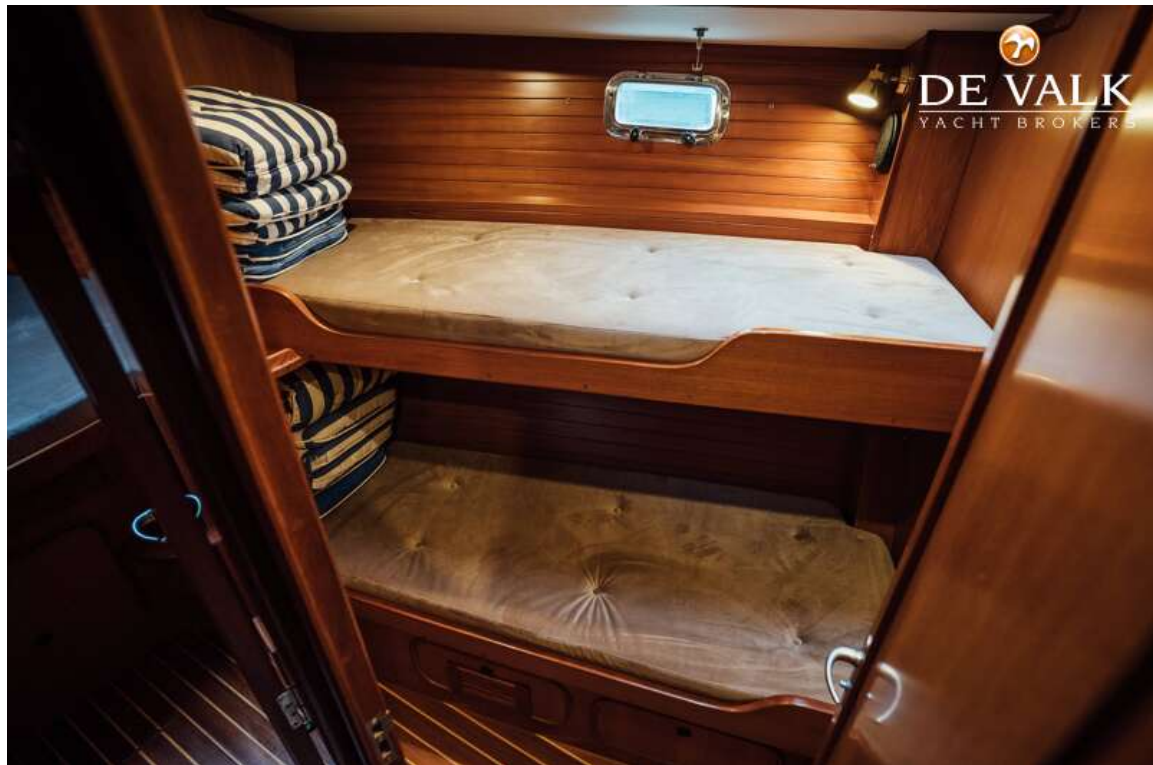
TASWELL 49 ALL SEASONS



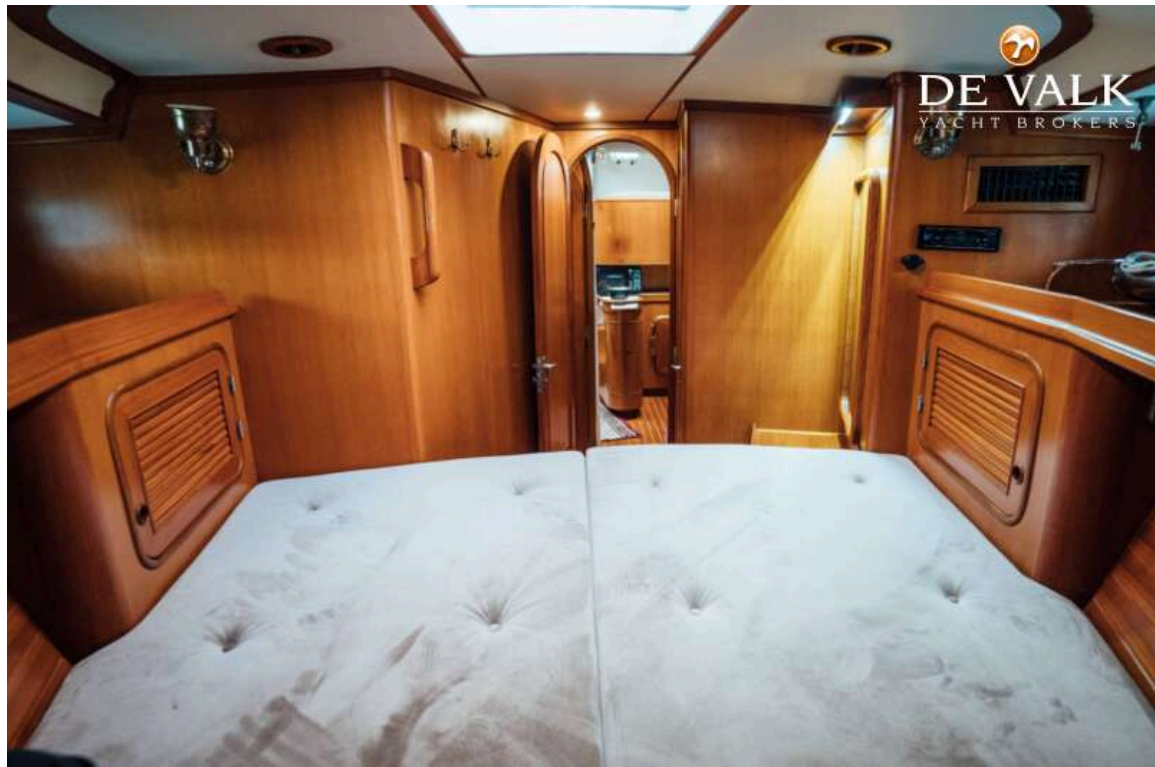
TASWELL 49 ALL SEASONS



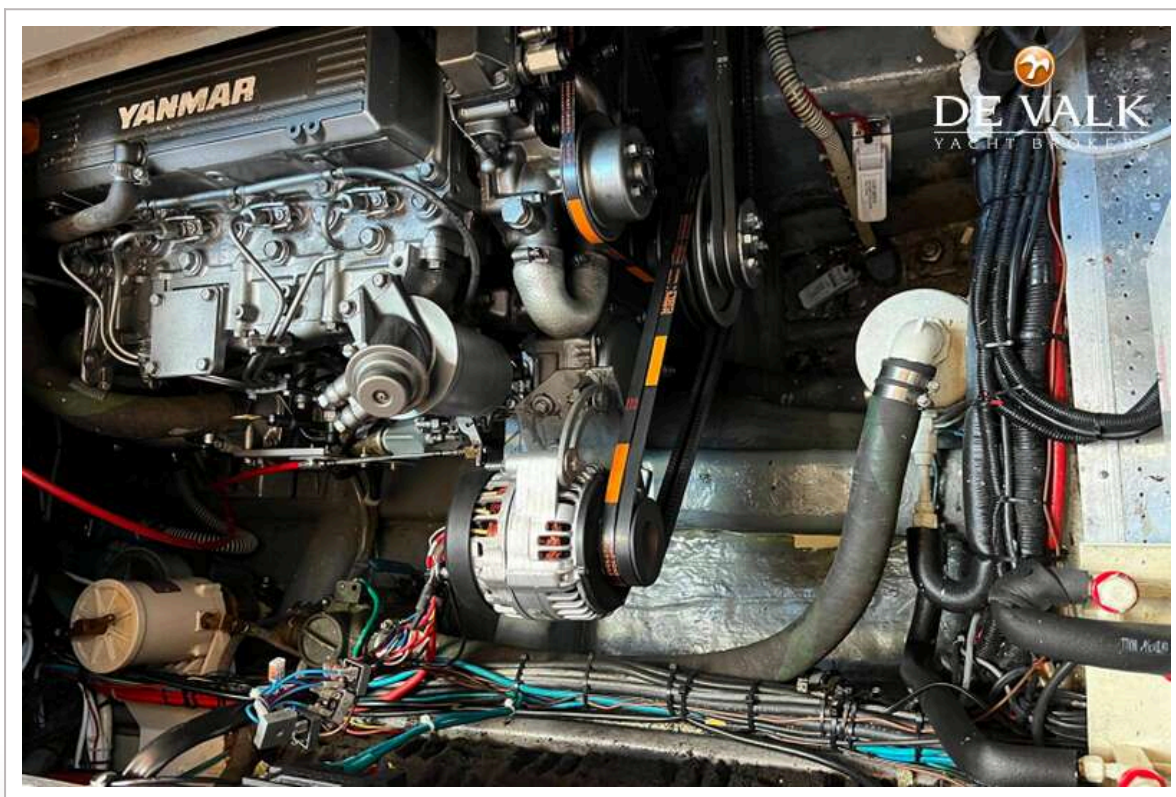
TASWELL 49 ALL SEASONS



TASWELL 49 ALL SEASONS



TASWELL 49 ALL SEASONS



TASWELL 49 ALL SEASONS

