



DE VALK  
YACHT BROKERS



## OCEAN ALEXANDER 51 SEDAN



DE VALK  
YACHT BROKERS

# OCEAN ALEXANDER 51 SEDAN

## BROKER'S COMMENTS

This Ocean Alexander 51 with raised pilothouse has an impressive amount of onboard living space. Below decks she offers nice large owner cabin and two guest cabins and two bathrooms. The current owner had the ensuite bathroom/shower enlarged so it's like comfort at home. Next to the large aft cockpit is the spacious fly bridge the place to be while under way. Recently a lot of her equipment has been replaced with hot water heating, solar installation with Lithium battery pack etc. The outside needs an overhaul but can be cost effectively done. You may certainly consider her as live-aboard.

*Marc Weijenberg*

## SPECIFICATIONS

<b>Dimensions</b>	16.80 x 5.05 x 1.35 (m)	<b>Builder</b>	Alexander Marine Co.Ltd
<b>Built</b>	1990	<b>Cabins</b>	3
<b>Material</b>	GRP	<b>Berths</b>	6
<b>Engine(s)</b>	2 x MAN D2848LE diesel	<b>Hp/Kw</b>	2 x 510.00 (hp), 0.00 (kw)
<b>Asking price</b>	sold (VAT )	<b>Lying</b>	The Netherlands

## CONTACT

<b>Sales office</b>	De Valk Thuishaven	<b>Telephone</b>	+31 35 5829042
<b>Address</b>	Peperstraat 7 1411 PX Naarden NL	<b>E-mail</b>	thuishaven@devalk.nl

## DISCLAIMER

These particulars are given in good faith as supplied but cannot be guaranteed.



# OCEAN ALEXANDER 51 SEDAN

## GENERAL

Model	OCEAN ALEXANDER 51 SEDAN
Type	motor yacht
LOA (m)	16,80
Beam (m)	5,05
Draft (m)	1,35
Headroom (m)	1,97
Year built	1990
Builder	Alexander Marine Co.Ltd
Country	Taiwan
Designer	Ocean Alexander
Displacement (t)	23
Hull material	GRP
Hull colour	blue
Hull shape	deep-V
Superstructure material	GRP
Rubbing strake	rubber
Deck material	GRP
Deck finish	non-skid moulded in
Superstructure deck finish	non-skid moulded in
Cockpit deck finish	teak
Window frame	stainless steel
Window material	tempered glass
Deckhatch	yes
Portholes	stainless steel
Flybridge	yes
Flybridge cockpit cover	yes
Mast can be lowered	manual
Fuel tank (litre)	aluminium 2 x 700
Fuel tank 2 (litre)	aluminium 2 x 264
Freshwater tank (litre)	aluminium 946



# OCEAN ALEXANDER 51 SEDAN

Blackwater tank (litre)	aluminium 160 (not in operation)
Blackwater tank extraction	deck extraction + pump (not in operation)
Inside helm position	hydraulic Teleflex
Flybridge helm position	hydraulic Teleflex

## ACCOMMODATION

Cabins	3
Berths	6
Interior	Japanese Zen-Asche
Floor	parquet
Open cockpit	yes
Pilot house/deck saloon	raised pilothouse
Saloon	large U-shaped settee with extra chairs
Headroom saloon (m)	1,97
Heating	central heating Hansa Post Marine heating with kickspace blowers
Dinette	yes
Sliding door to cockpit	yes
Galley	u-shaped worktops
Countertop	corian
Sink	2 x
Cooker	ceramic AEG 220v
Microwave/oven combi	Samsung (220v)
Fridge	2 x Liebherr (220v)
Hot water system	220V + engine
Water pressure system	electrical 24v
Owners cabin	double bed
Bed length (m)	2,10 x 1,50 mtr, headroom 1,90 mtr
Wardrobe	hanging/drawers/shelves
Bathroom	en suite I
Toilet	en suite



# OCEAN ALEXANDER 51 SEDAN

Toilet system	manual
Wash basin	in the bathroom
Shower	en suite
Guest cabin 1	twin single
Bed length (m)	2 x 1,95 x 0,70 mtr, headroom 1,90 mtr
Wardrobe	hanging/drawers/shelves
Bathroom	shared II
Toilet	shared
Toilet system	manual
Wash basin	in the bathroom
Shower	shared
Guest cabin 2	double bed
Bed length (m)	1,94 x 1,35 mtr, headroom 1,90
Wardrobe	hanging/drawers/shelves
Extra info	The original bathtub in the owner cabin has been converted into a large shower compartment (2020)
Wet bar	On the flybridge there is a wetbar with room for grill/fridge etc

## MACHINERY

No of engines	2
Make	MAN
Type	D2848LE
HP	510
Fuel	diesel
Year installed	1990
Year of overhaul	2020
Maximum speed (kn)	19
Cruising speed (kn)	7
Engine hours	2600
Engine cooling system	freshwater heat exchanger
Drive	shaft



# OCEAN ALEXANDER 51 SEDAN

Engine controls	bowden cable
Gearbox	hydraulic ZF/MPM
Bowthruster	electric Sidepower 210/250 (2018)
Sternthruster	electric Sidepower 170/250 (2018)
Exhaust	watercooled
Propeller type	fixed (2021)
Propeller blades	2 x 4
Propeller shaft material	stainless steel (2021)
Shaft lubrication	water
Electric bilge pump	4 x
Electrical installation	12v/24v/220v
Generator	wet exhaust Onan 6.5MDKP 6,5kW
Running hours generator	1600
Start battery	4 x 200ah (2020)
Service battery	3 x 12v Llitium Ion batteries 200amp/969Watt with Victron Buck-boost DC/DC inverters (2021)
Battery monitor	on mainswitch panel plus app
Battery charger	Victron Skylla 24v/80amp (2020)
Inverter	Victron 12v/3000watt (2021)
Solar panel	2500 WP installation with Smartsolar MPPT controllers (2021)
Shorepower	with cable
Trimtabs	fixed position
Extra info	twin Racor fuelfilter system (2021)
Extra info	With the big tanks, complete solarpanel and Lithium Ion installation you can be "off-grid" for a longer periods of time.

## NAVIGATION

Compass on flybridge	Ritchie
Electric compass	via autopilot
Depth sounder	Clipper + repeater
VHF	Sirmrad RS35 + flybridge horn



# OCEAN ALEXANDER 51 SEDAN

Autopilot	Raymarine EV-400 hydraulic plus P70 controller + flybridge repeater (2021)
Rudder angle indicator	via autopilot
Radar	Furuno
GPS	Furuno GP-39 + Furuno GP-31
Plotter	Raymarine Hybrid touch 19" on flybridge
Electronic chart(s)	In plotter
EPIRB	Global Fix (valid 03-2027)
Navigation lights	yes

## EQUIPMENT

Fixed hardtop	over the cockpit
Bimini	on the flybridge
Bathing platform	Teak
Boarding ladder	stainless steel
Transom door	yes
Deck shower	hot & cold
Anchor	Brittany
Anchor chain	30 mtr
Windlass	electrical Maxwell (not in operation)
Sea railing	stainless steel
Pulpit	stainless
Life raft	container Plastimo Transocean
Life raft (pers)	6
Last life raft survey	05-2027
Wiper	not installed
Horn	electric
Fenders	yes
Mooring lines	yes
TV	in the salon
Satellite	Raymarine (2021)



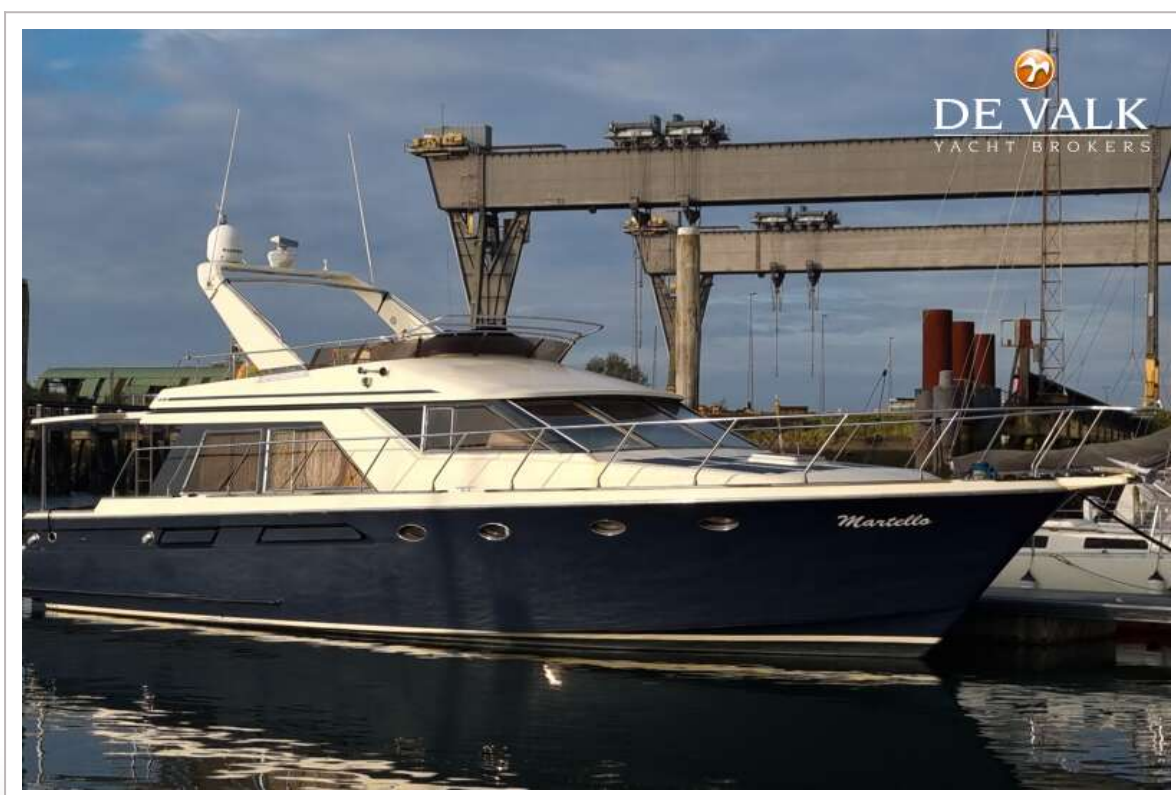
# OCEAN ALEXANDER 51 SEDAN

Radio-cd player	yes
Speakers in salon	plus flybridge
Fire extinguisher	3 x
Latest extinguisher survey	not serviced





# OCEAN ALEXANDER 51 SEDAN



# OCEAN ALEXANDER 51 SEDAN





# OCEAN ALEXANDER 51 SEDAN



# OCEAN ALEXANDER 51 SEDAN

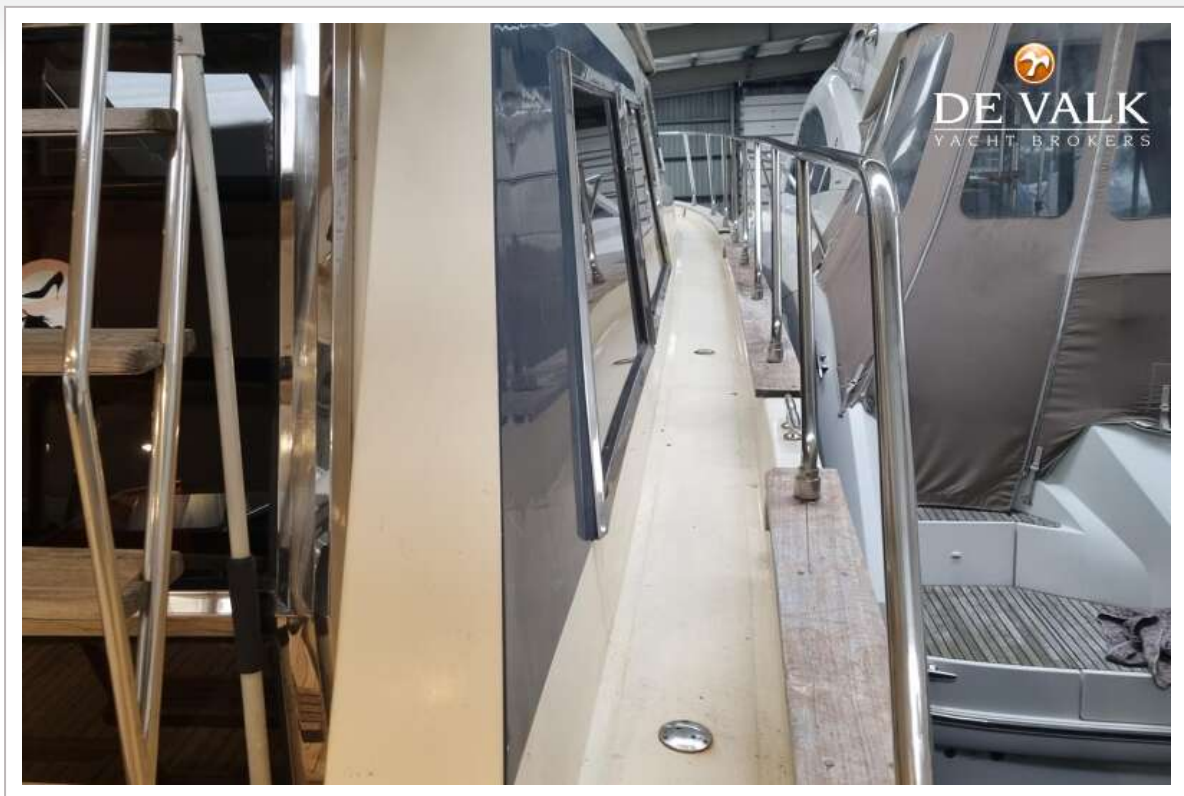




# OCEAN ALEXANDER 51 SEDAN



# OCEAN ALEXANDER 51 SEDAN





# OCEAN ALEXANDER 51 SEDAN



# OCEAN ALEXANDER 51 SEDAN





# OCEAN ALEXANDER 51 SEDAN



# OCEAN ALEXANDER 51 SEDAN

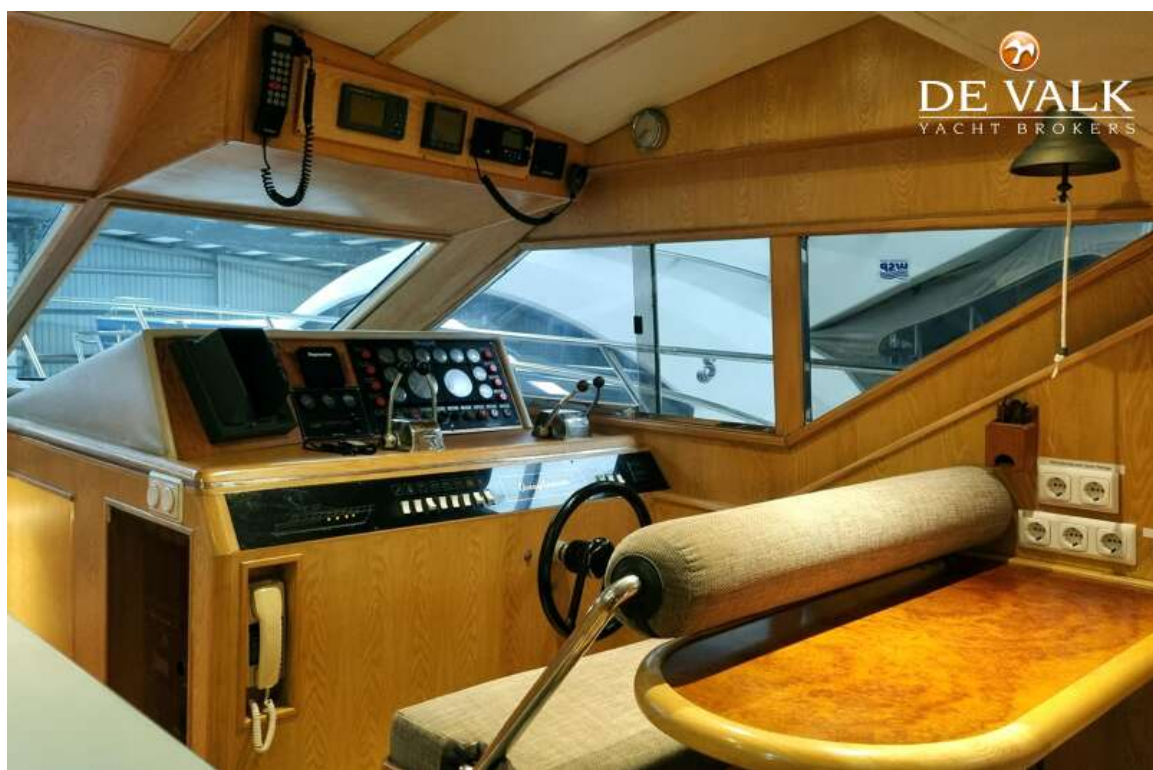




# OCEAN ALEXANDER 51 SEDAN

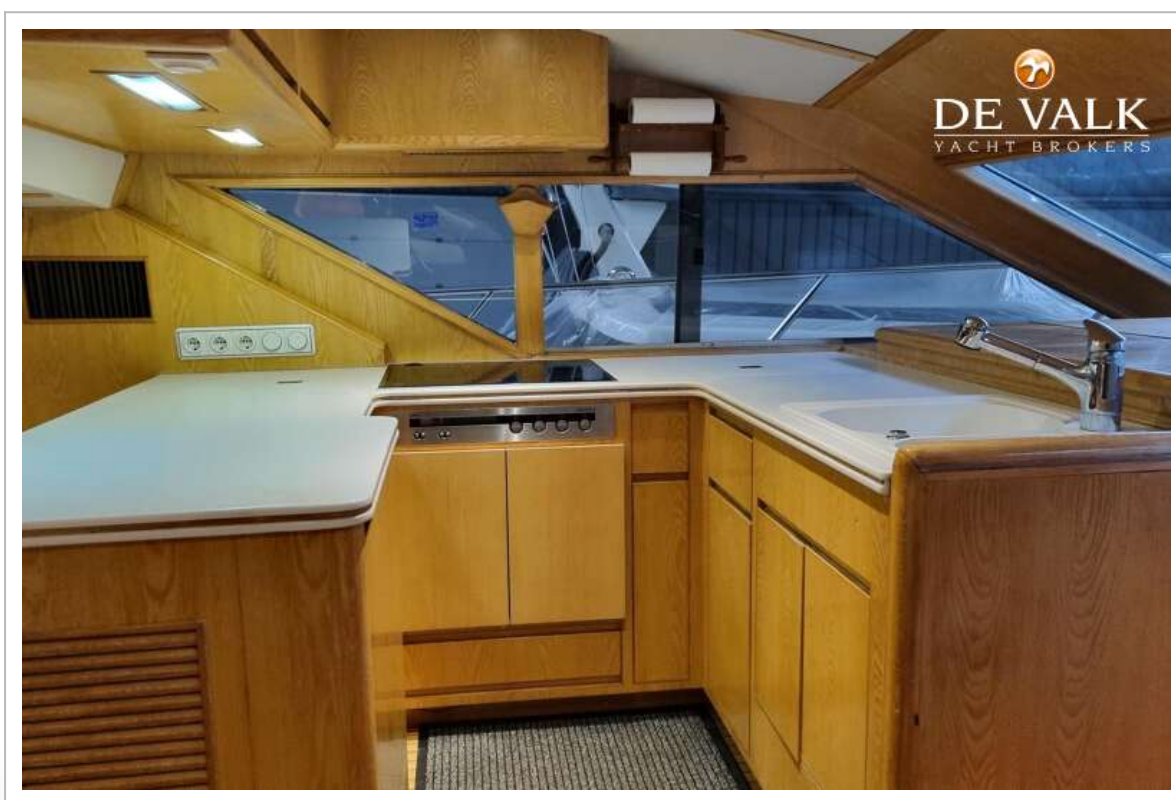


# OCEAN ALEXANDER 51 SEDAN





# OCEAN ALEXANDER 51 SEDAN



# OCEAN ALEXANDER 51 SEDAN





# OCEAN ALEXANDER 51 SEDAN



# OCEAN ALEXANDER 51 SEDAN

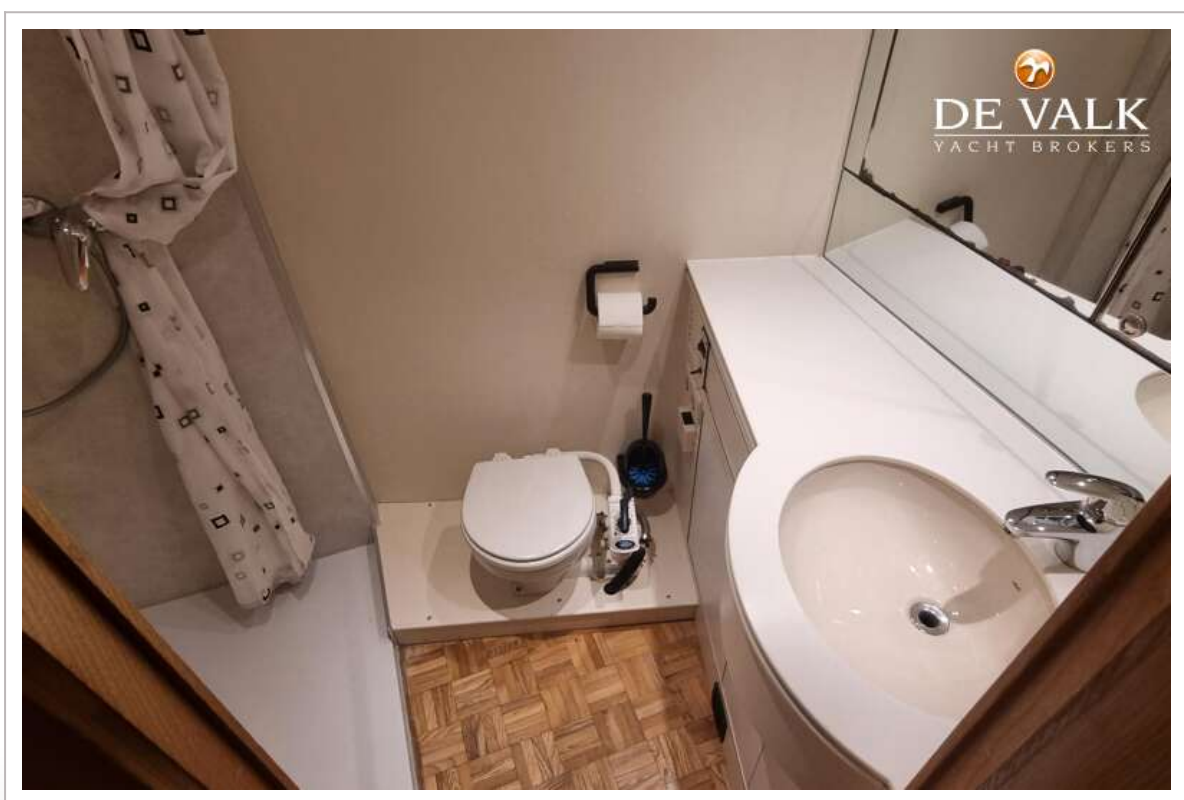




# OCEAN ALEXANDER 51 SEDAN



# OCEAN ALEXANDER 51 SEDAN

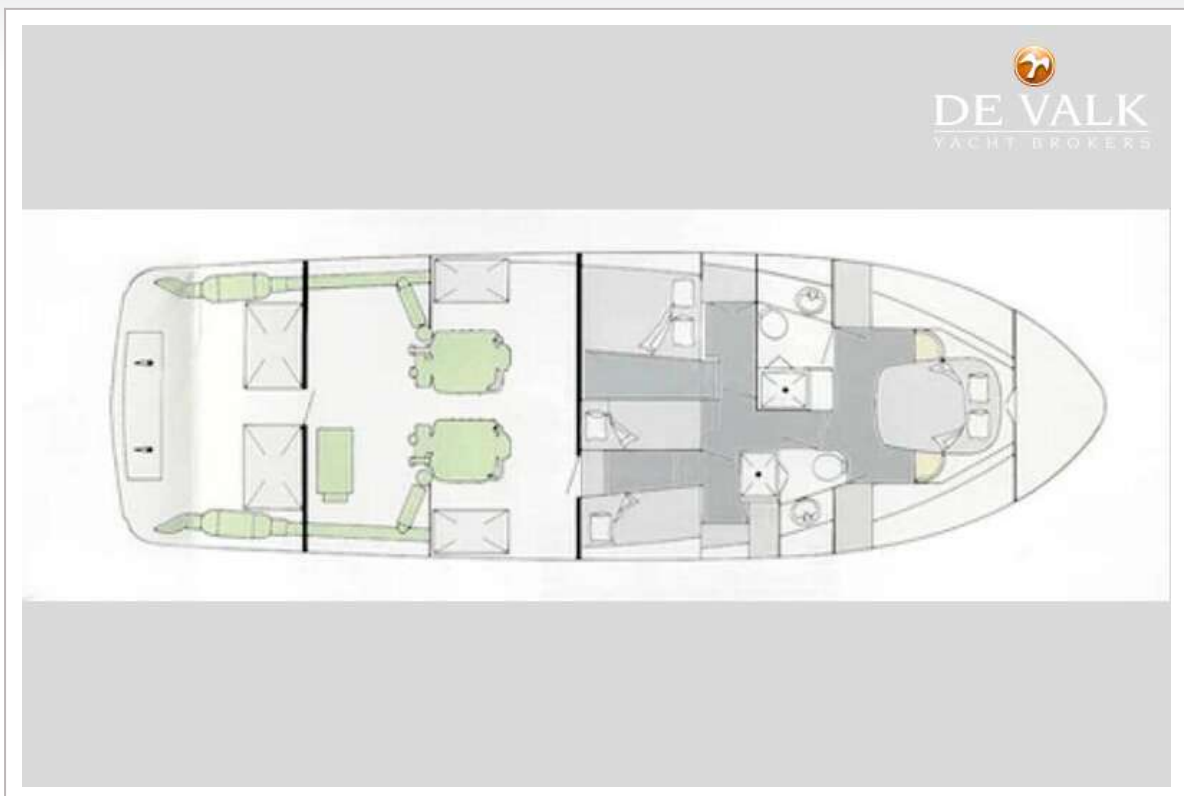


# OCEAN ALEXANDER 51 SEDAN

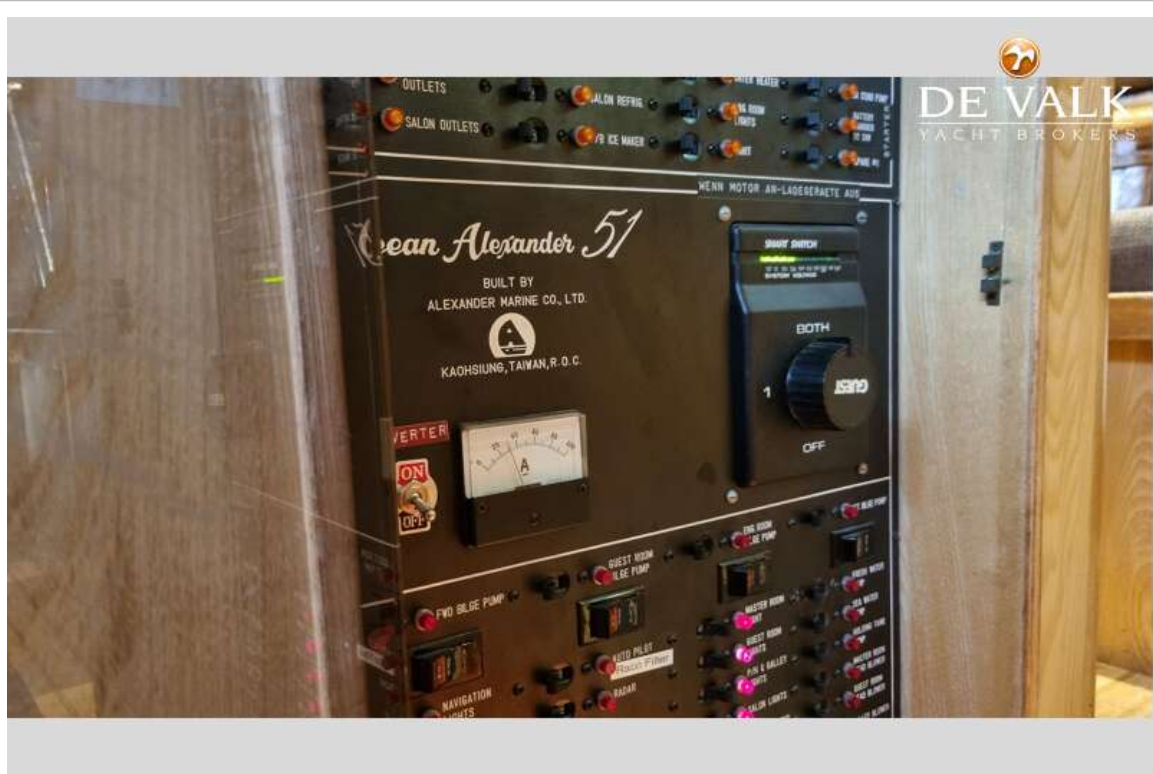
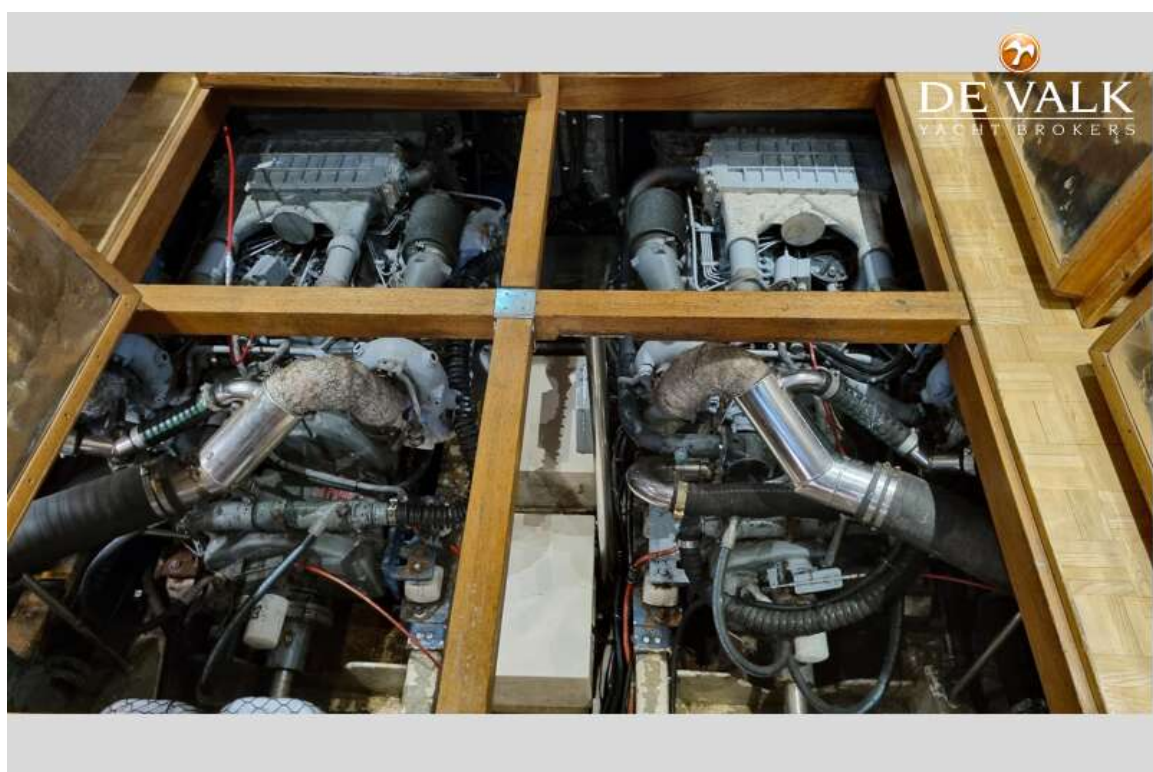




# OCEAN ALEXANDER 51 SEDAN



# OCEAN ALEXANDER 51 SEDAN



# OCEAN ALEXANDER 51 SEDAN

