



TUNA 40.2

# TUNA 40.2

## BROKER'S COMMENTS

The Tuna 40.2 is fitted with stabilizers, reverse cycle airco and bowthruster. This new built yacht(2009) is the better and face lifted version of the Tuna 40. The Tuna 40.2 is more then suitable for a comfortable run on the inland and coastal waters. Boat has been launched in 2013. The Tuna 40.2 has been surveyed in December 2023. Come and see her in our covered sales marina.

*Sjoerd Paddenburg*

## SPECIFICATIONS

<b>Dimensions</b>	12.20 x 4.35 x 0.90 (m)	<b>Builder</b>	OCC Yachtbuilders
<b>Built</b>	2009	<b>Cabins</b>	3
<b>Material</b>	GRP	<b>Berths</b>	6
<b>Engine(s)</b>	2 x YANMAR 4JH4-TE diesel	<b>Hp/Kw</b>	2 x 75.00 (hp), 55.20 (kw)
<b>Asking price</b>	€ 239.000 (VAT Paid)	<b>Lying</b>	at sales office

## CONTACT

<b>Sales office</b>	De Valk Loosdrecht B.V.	<b>Telephone</b>	+31 (0)35 582 90 30
<b>Address</b>	't Breukeleveense Meentje 6 1231LM Loosdrecht / Wijdmeren NL	<b>E-mail</b>	loosdrecht@devalk.nl

## DISCLAIMER

These particulars are given in good faith as supplied but cannot be guaranteed.



## GENERAL

Model	TUNA 40.2
Type	motor yacht
LOA (m)	12,20
Beam (m)	4,35
Draft (m)	0,90
Headroom (m)	1,90
Year built	2009
Launched	2013
Builder	OCC Yachtbuilders
Country	Turkey
CE norm	B
Hull material	GRP
Hull colour	off-white
Superstructure material	GRP
Rubbing strake	rubber
Deck material	GRP
Deck finish	teak
Superstructure deck finish	paint
Cockpit deck finish	yes
Window frame	wood
Window material	glass
Deckhatch	1
Portholes	stainless steel 5x
Fuel tank (litre)	1x 950
Fuel tank 2 (litre)	yes
Level indicator (fuel tank)	yes
Freshwater tank (litre)	1x 1000 L
Level indicator (freshwater)	yes
Blackwater tank (litre)	1x 120 L
Level indicator (blackwater)	yes



Blackwater tank extraction	deck extraction + pump
Wheel steering	hydraulic
Inside helm position	yes

## ACCOMMODATION

Cabins	3
Berths	6
Interior	cherry
Floor	teak and holly
Aft deck	yes
Pilot house/deck saloon	yes
Saloon	yes
Headroom saloon (m)	1,90
Heating	yes
Air-conditioning	reverse cycle airco Webasto
Dinette	yes
Opening door to cockpit	yes
Galley	yes
Countertop	corian
Sink	stainless steel
Cooker	calor gas Smev
Extractor	yes
Fridge	Isotherm
Hot water system	220V + engine
Water pressure system	electrical
Owners cabin	double bed
Bed length (m)	2,00
Wardrobe	hanging and shelves
Bathroom	shared
Toilet	separate Jabsco
Toilet system	electric



Wash basin	at the toilet
Shower	shared
Guest cabin 1	double bed
Bed length (m)	2
Wardrobe	hanging and shelves
Guest cabin 2	twin single
Bed length (m)	2
Wardrobe	hanging
Extra info	upholstery 2024

## MACHINERY

No of engines	2
Make	YANMAR
Type	4JH4-TE
HP	75
kW	55.20
Fuel	diesel
Cruising speed (kn)	7
Engine hours	1565
Engine cooling system	freshwater heat exchanger
Drive	sail-drive
Saildrive seal	Water seal
Engine controls	bowden cable
Gearbox	hydraulic
Engine controls	bowden cable
Bowthruster	electric MAX power
Gearbox	yes
Exhaust	watercooled
Propeller type	fixed
Electric bilge pump	Ruler 1500 GPH
Electrical installation	12V/230V



Start battery	1x PS + 1x SB 12V/110Ah
Service battery	2 x Victron ENERGY 12V/220AH
Bowthruster battery	1x Victron 12V / 200Ah
Battery monitor	Victron
Battery charger	2X Handsun HS-60P
Inverter	Victron 12V/3000/120A
Battery charger/inverter	yes
Diode battery combiners	yes
Shorepower	with cable
Stabilizers	fin Naiad dynamics multisea 2

## NAVIGATION

Compass	Plastimo
Electric compass	Raymarine ST6002
Depth sounder/log	Raymarine ST60+
VHF	2x Raymarine
Autopilot	Raymarine with remote
Plotter/GPS	Raymarine C70
Navigation lights	yes

## EQUIPMENT

Fixed windscreen	yes
Window cover	yes
Cockpit cushions	2024
Cockpit table	yes
Bathing platform	yes
Boarding ladder	stainless steel
Deck shower	yes
Anchor	yes
Anchor chain	yes
Windlass	electrical Lofrans



Sea railing	stainless steel
Grab rail (superstructure)	stainless steel
Wiper	4x
Horn	electric
Fenders	yes
Mooring lines	yes
Radio-cd player	Kenwood
Speakers in salon	yes
Clock - barometer	yes





## TUNA 40.2





## TUNA 40.2





## TUNA 40.2



## TUNA 40.2





## TUNA 40.2



## TUNA 40.2

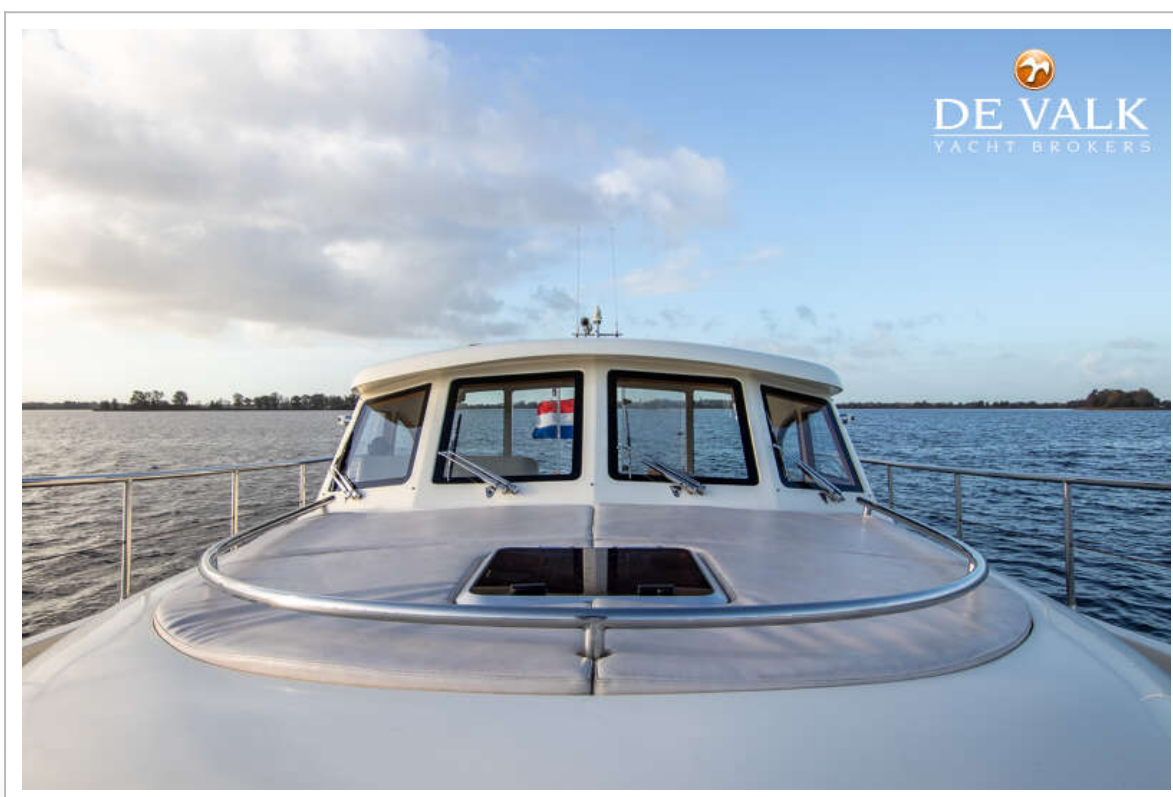
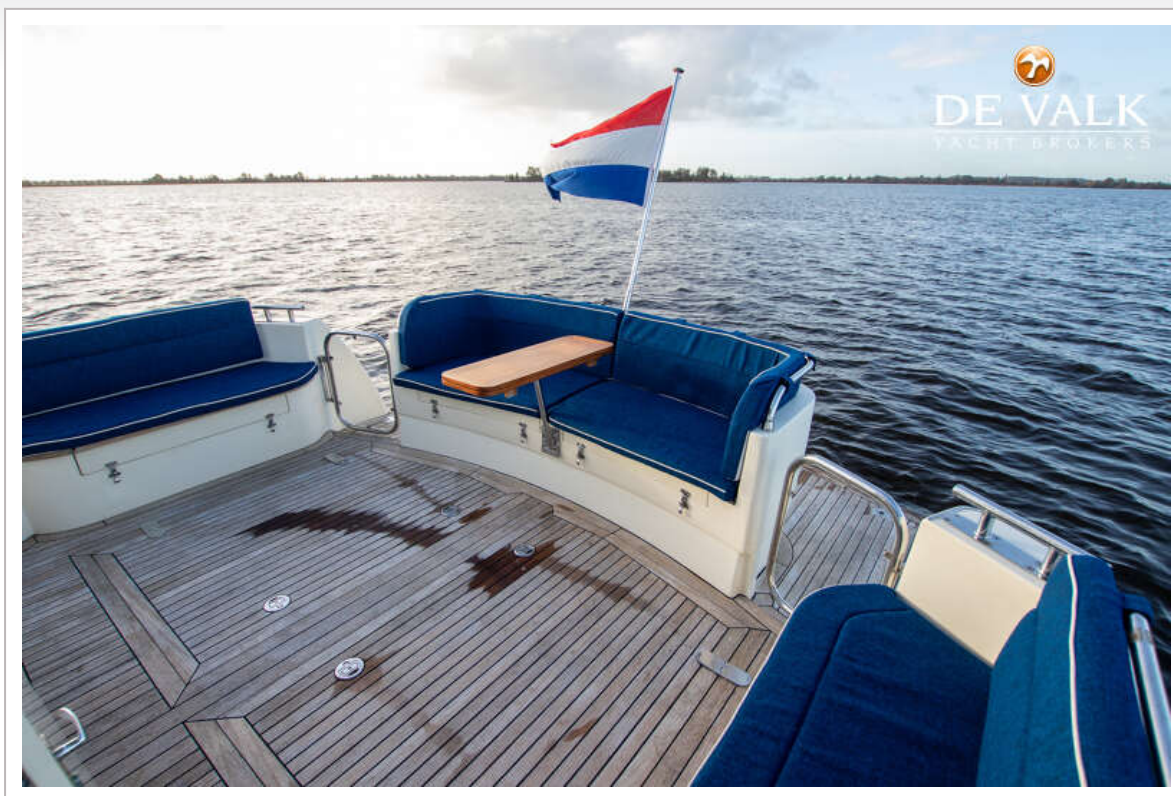




## TUNA 40.2

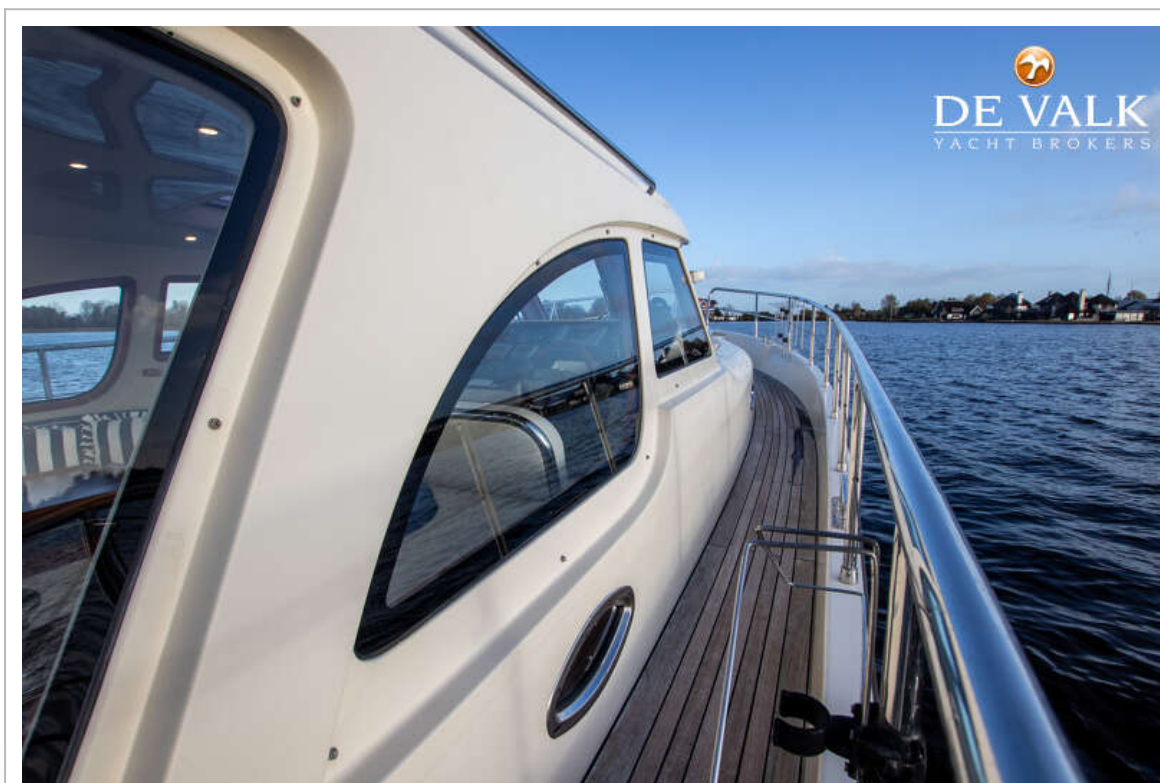


## TUNA 40.2

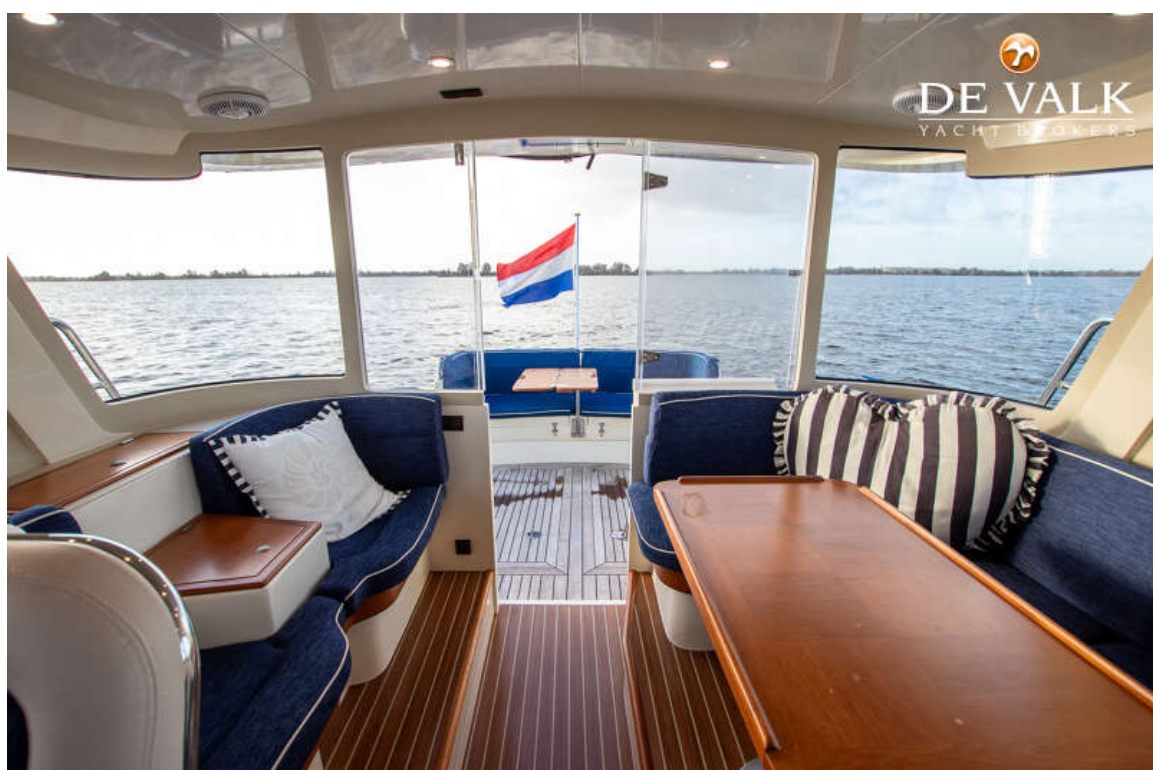




## TUNA 40.2

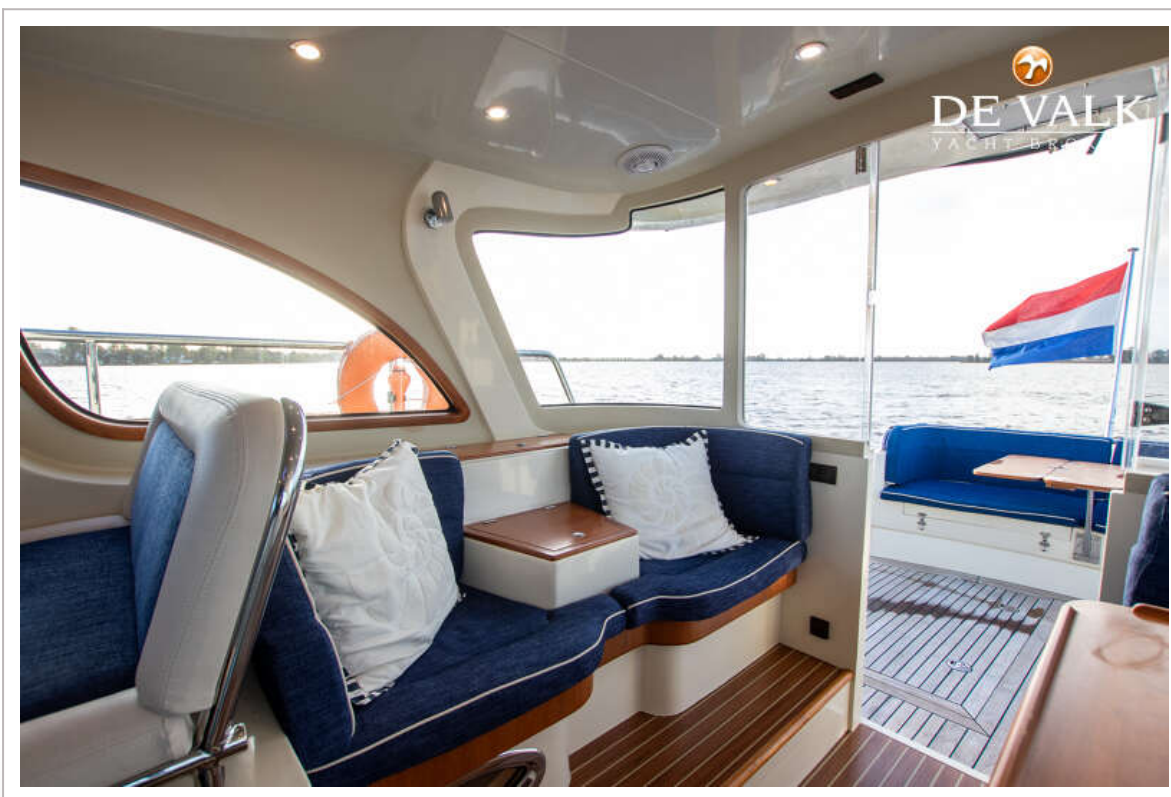


## TUNA 40.2

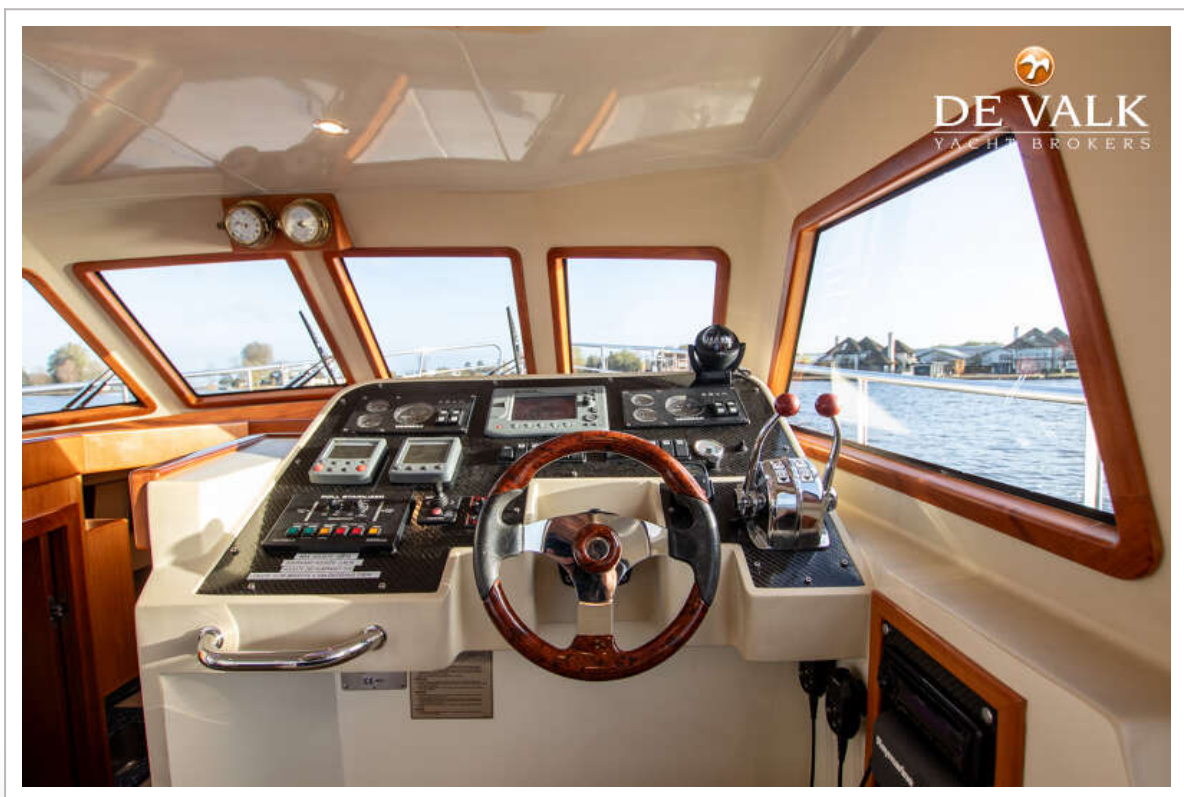
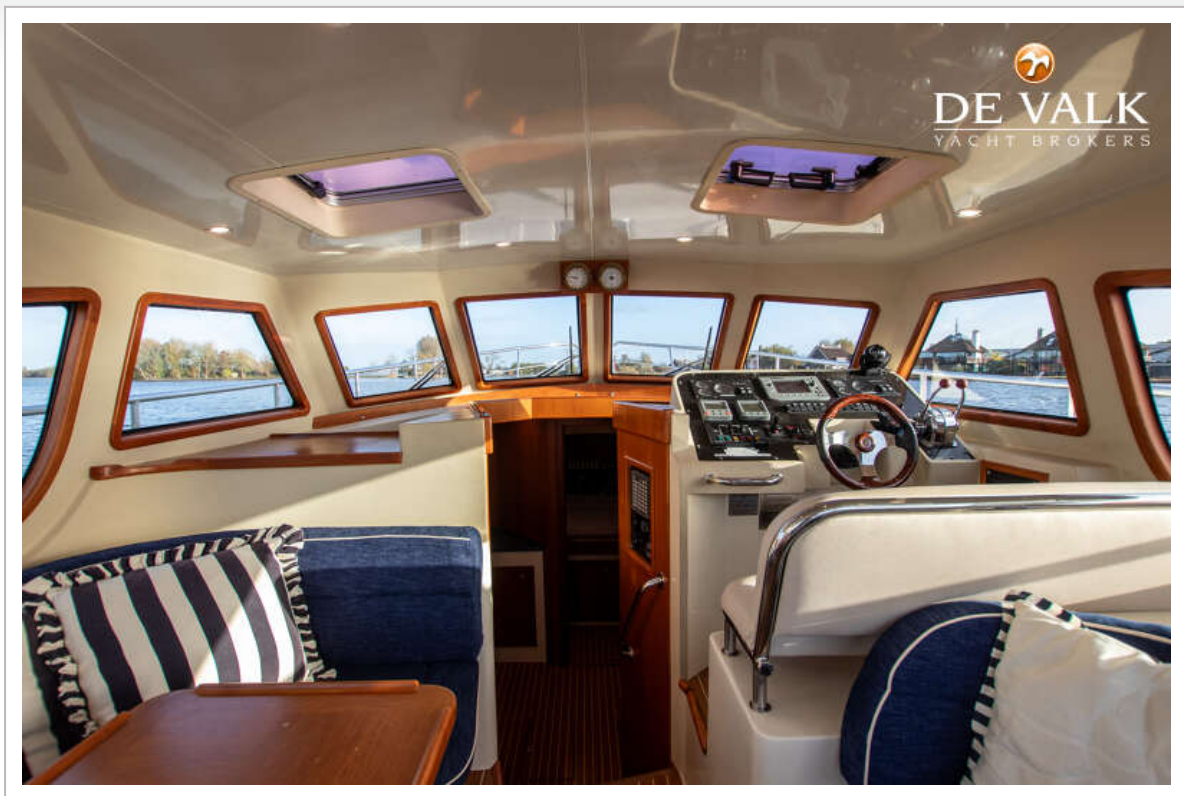




## TUNA 40.2



## TUNA 40.2





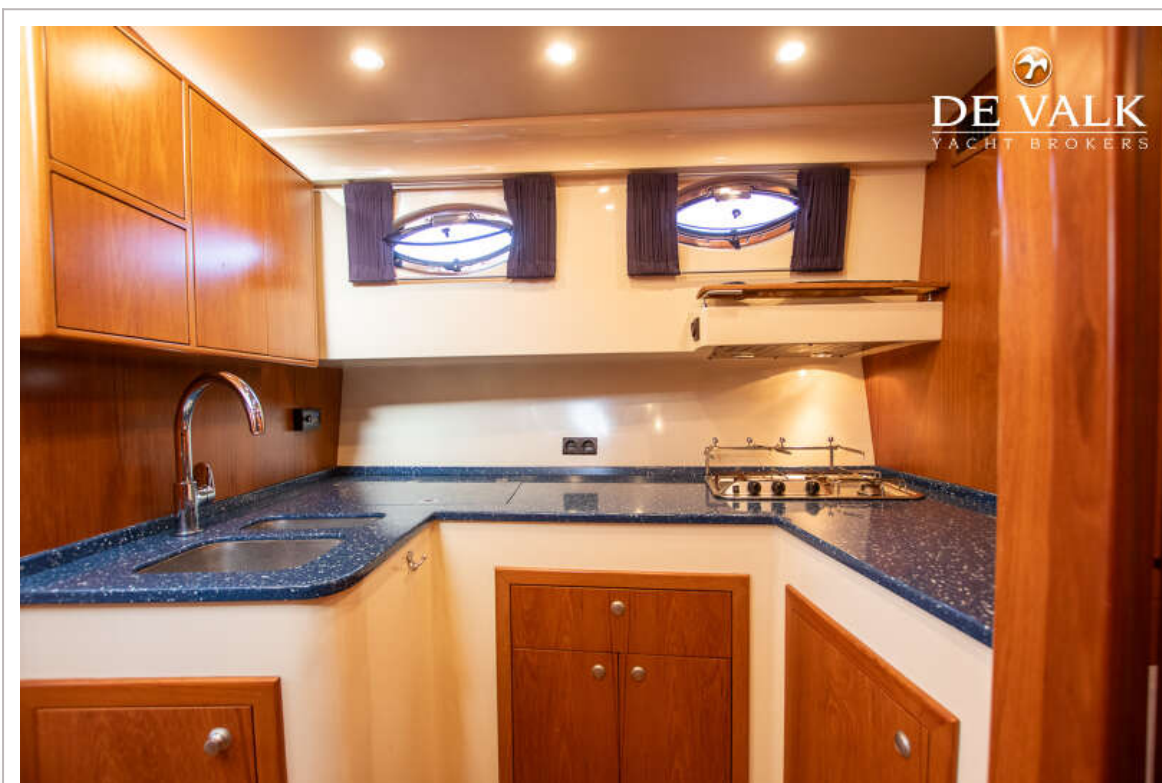
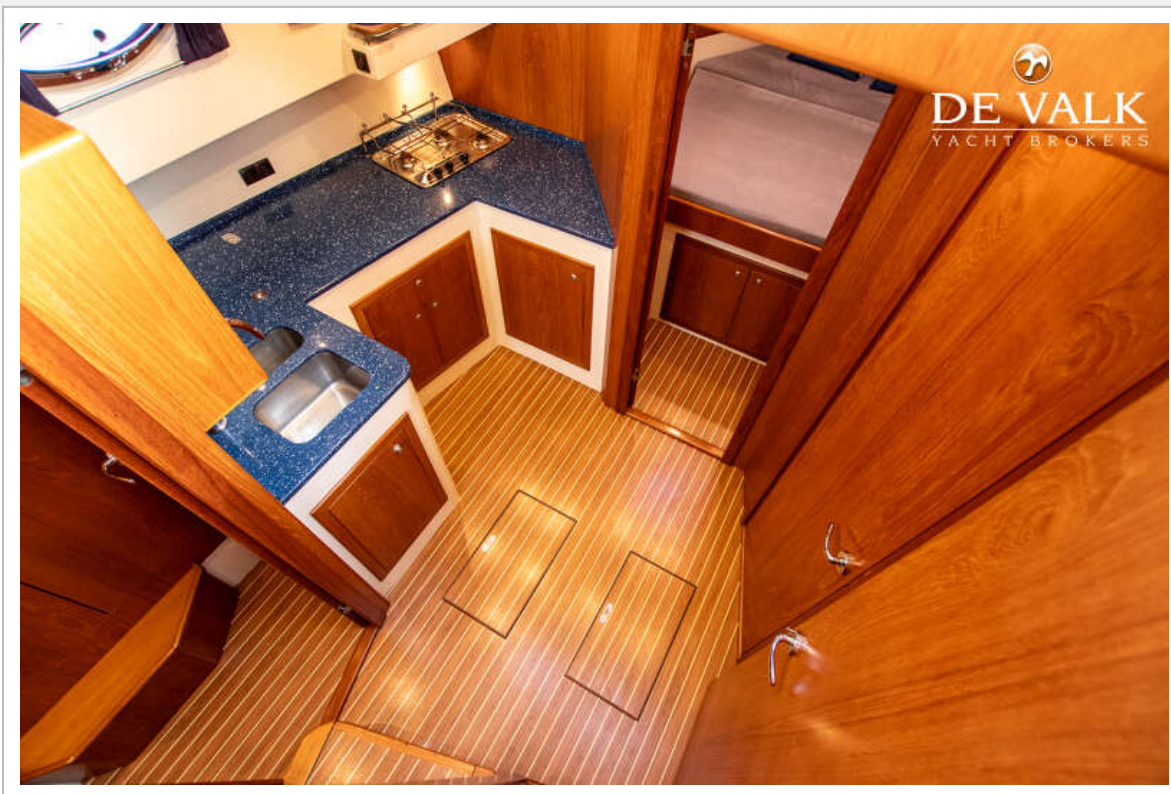
## TUNA 40.2





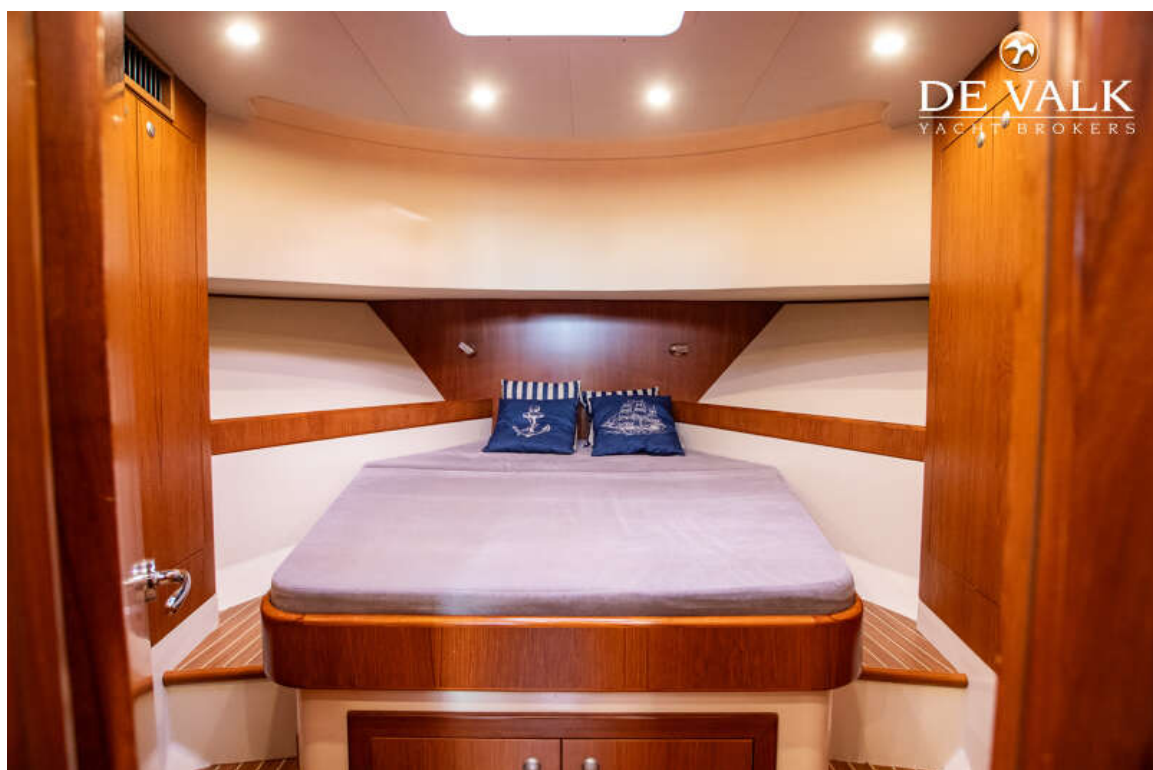


# TUNA 40.2





## TUNA 40.2



## TUNA 40.2

