



## AQUADOR 32 C



# AQUADOR 32 C

## BROKER'S COMMENTS

This Aquador is a very well maintained day and weekend cruiser with 2 cabins and 4 berths, a yacht you can get around with quickly with a heavy Yanmar 440 Hp diesel engine.. If you are interested you can view this Aquador at our covered sales marina in Sneek.

*Peter Spruyt*

## SPECIFICATIONS

<b>Dimensions</b>	9.75 x 3.28 x 0,90 / 0.00 (m)	<b>Builder</b>	Aquador Boats Finland
<b>Built</b>	2002	<b>Cabins</b>	2
<b>Material</b>	GRP	<b>Berths</b>	4
<b>Engine(s)</b>	1 x Yanmar 6LYA-STP diesel	<b>Hp/Kw</b>	370.00 (hp), 272.32 (kw)
<b>Asking price</b>	sold (VAT )	<b>Lying</b>	at sales office

## CONTACT

<b>Sales office</b>	De Valk Sneek	<b>Telephone</b>	+31 (0)515 42 80 30
<b>Address</b>	Zwolsmanweg 7 8606 KC Sneek NL	<b>E-mail</b>	sneek@devalk.nl

## DISCLAIMER

These particulars are given in good faith as supplied but cannot be guaranteed.



## GENERAL

Model	AQUADOR 32 C
Type	motor yacht
LOA (m)	9,75
Beam (m)	3,28
Draft min (m)	0,90
Air draft (m)	3,25
Air draft min (m)	2,65
Headroom (m)	1,90
Year built	2002
Builder	Aquador Boats Finland
Country	The Netherlands
Designer	Aquador Boats
Displacement (t)	5
CE norm	B
Hull material	GRP
Hull colour	blue
Hull shape	deep-V
Keel type	yes
Superstructure material	GRP
Rubbing strake	rubber
Deck material	GRP
Deck finish	non-skid moulded in
Superstructure deck finish	non-skid moulded in
Cockpit deck finish	teak
Window frame	aluminium
Window material	glass
Deckhatch	3 x
Portholes	6 x
Fuel tank (litre)	stainless steel 1 x 700 Ltr
Level indicator (fuel tank)	yes



# AQUADOR 32 C

Freshwater tank (litre)	stainless steel 1 x 200 Ltr
Level indicator (freshwater)	yes
Blackwater tank (litre)	stainless steel 1 x 78 Ltr
Level indicator (blackwater)	In the toilet
Wheel steering	hydraulic
Inside helm position	yes

## ACCOMMODATION

Cabins	2
Berths	4
Interior	cherry
Floor	teak and holly
Open cockpit	yes
Deck saloon	yes
Headroom saloon (m)	1,90 Mtr
Heating	diesel ducted hot air Wallas
Dinette	yes
Sliding door to cockpit	yes
Galley	yes
Countertop	plastic
Sink	stainless steel
Cooker	diesel 2 x burner Wallas
Oven	diesel Wallas safe Flame 96D
Fridge	Isotherm 60 Ltr
Freezer	yes
Hot water system	220V + engine Boiler Isothemp
Water pressure system	electrical
Owners cabin	v-bed
Bed length (m)	1,90 Mtr
Wardrobe	hanging and drawers
Bathroom	en suite



Toilet	shared
Toilet system	electric
Wash basin	at the toilet
Shower	shared
Guest cabin 1	double bed
Bed length (m)	2,10 Mtr
Wardrobe	hanging and drawers

## MACHINERY

No of engines	1
Make	Yanmar
Type	6LYA-STP
HP	370
kW	272.32
Fuel	diesel
Engine hours	1349
Engine cooling system	freshwater heat exchanger
Drive	shaft
Shaft seal	yes
Engine controls	bowden cable
Gearbox	hydraulic
Bowthruster	electric Vetus
Sternthruster	electric Vetus
Exhaust	watercooled
Propeller type	fixed
Propeller shaft material	stainless steel
Shaft lubrication	water
Electric bilge pump	2 x
Electrical installation	12/ 220 volt
Start battery	1 x 165 Amp
Service battery	2 x 120 Amp



Battery charger/inverter	Victron 12/ 30/ 3
Solar panel	2 x Panel/ Victron MPPT 70/ 15
Shorepower	with cable

## NAVIGATION

Depth sounder/log	Autohelm Bidata
VHF	Lowrance LVR- 250
Navigation lights	yes

## EQUIPMENT

Cockpit cover	yes
Cockpit cushions	yes
Cockpit table	yes
Bathing platform	yes
Boarding ladder	yes
Transom door	yes
Pushpit	yes
Wiper	2 x
Window ventilator	yes
Horn	electric
Fenders	yes
Mooring lines	yes
Radio-cd player	JVC



# AQUADOR 32 C





# AQUADOR 32 C





# AQUADOR 32 C



# AQUADOR 32 C





# AQUADOR 32 C

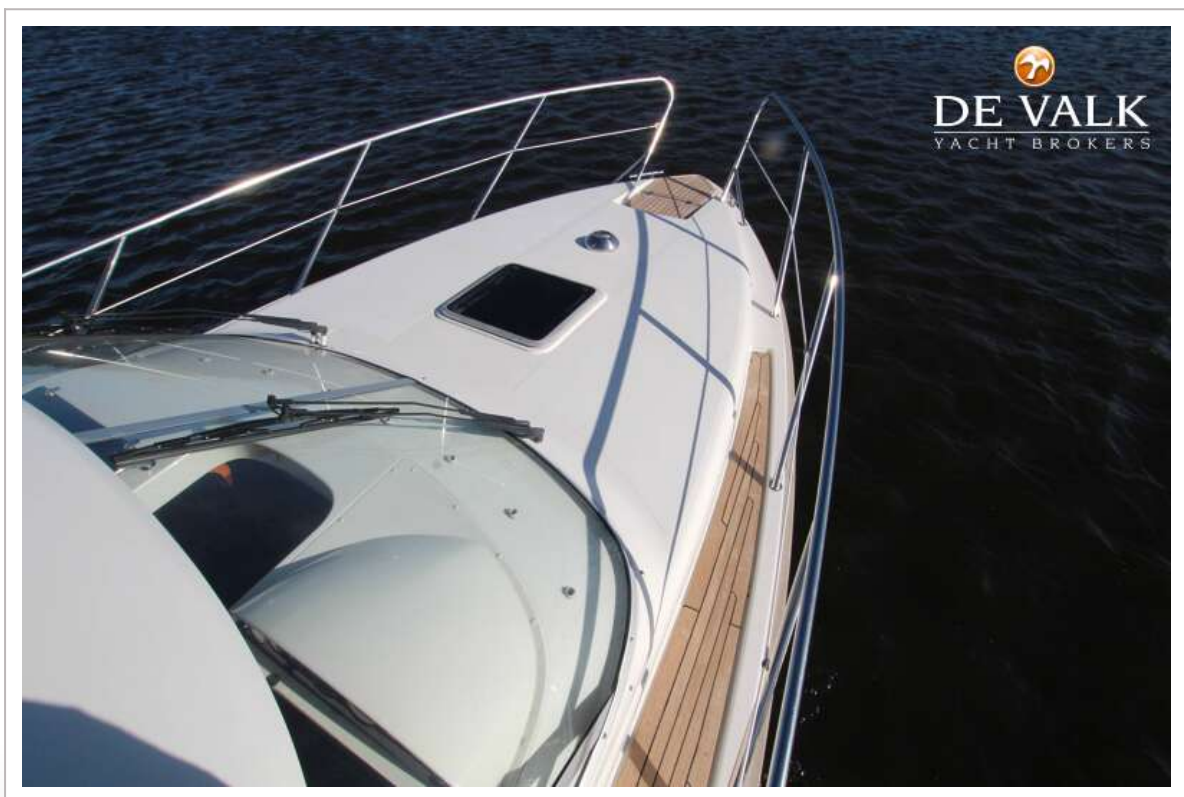


# AQUADOR 32 C





# AQUADOR 32 C





# AQUADOR 32 C



# AQUADOR 32 C

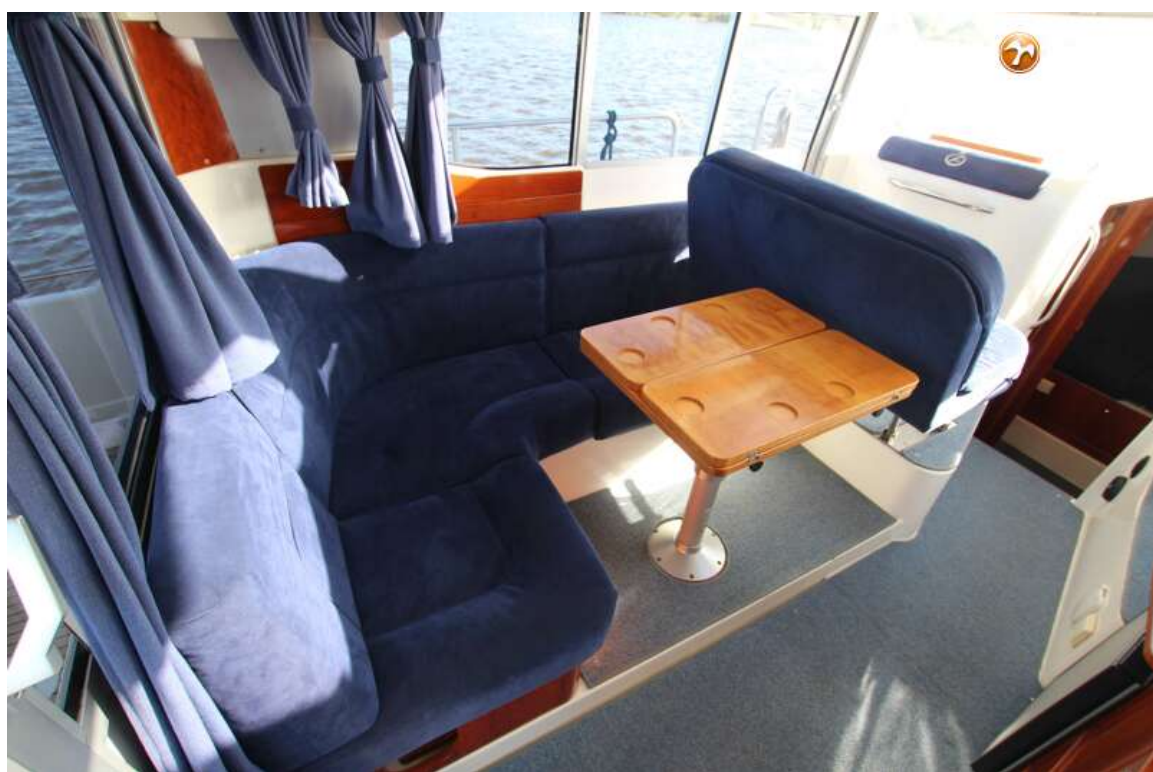




# AQUADOR 32 C



# AQUADOR 32 C





## AQUADOR 32 C





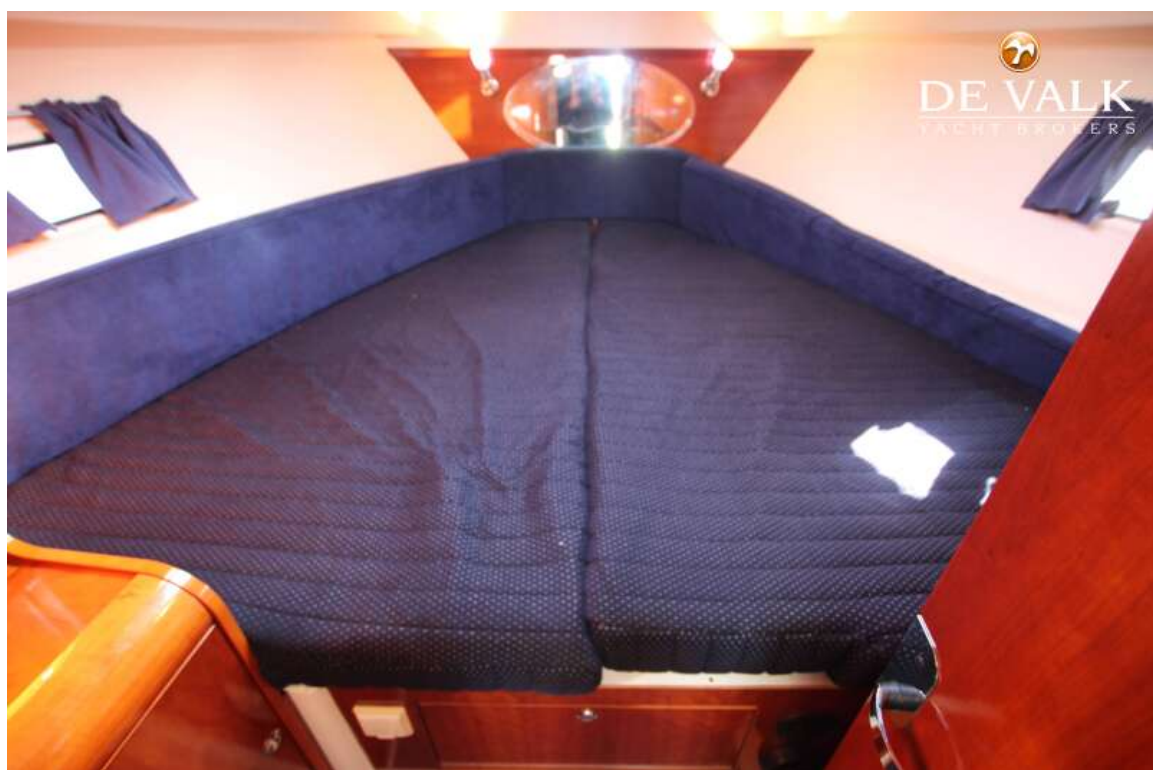
# AQUADOR 32 C



# AQUADOR 32 C



# AQUADOR 32 C

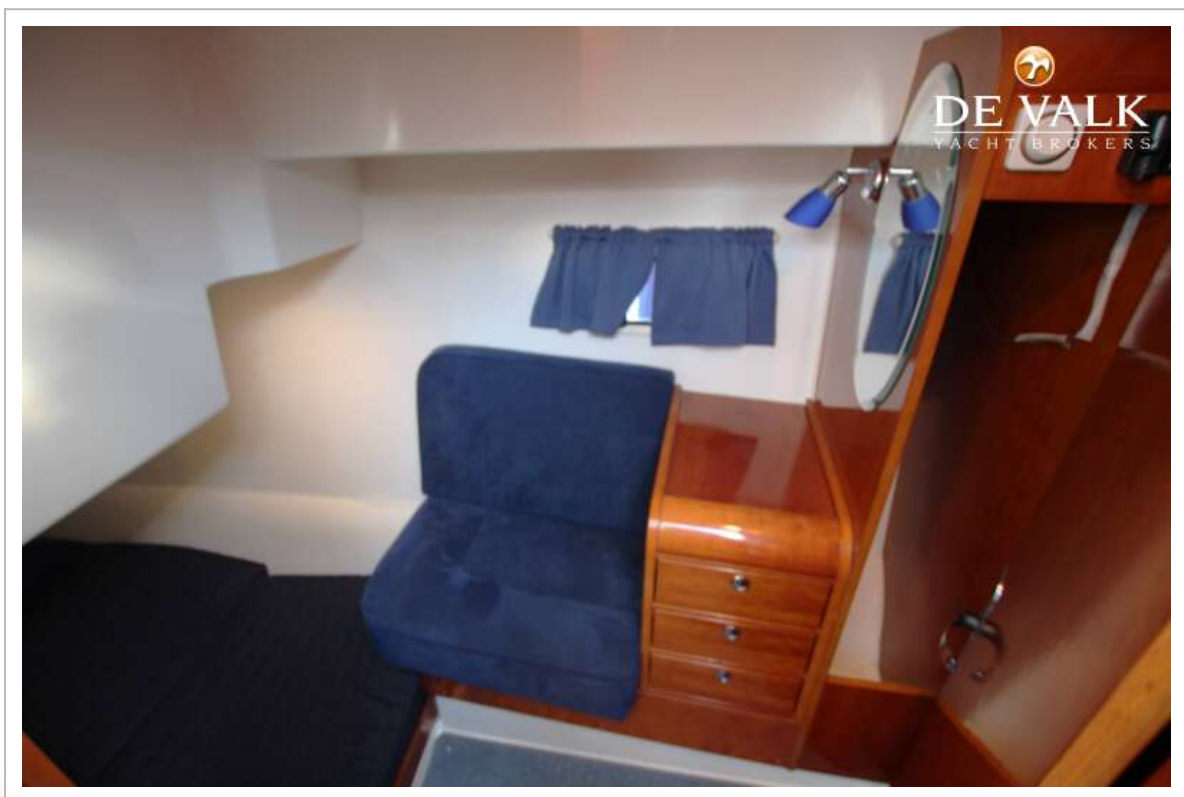
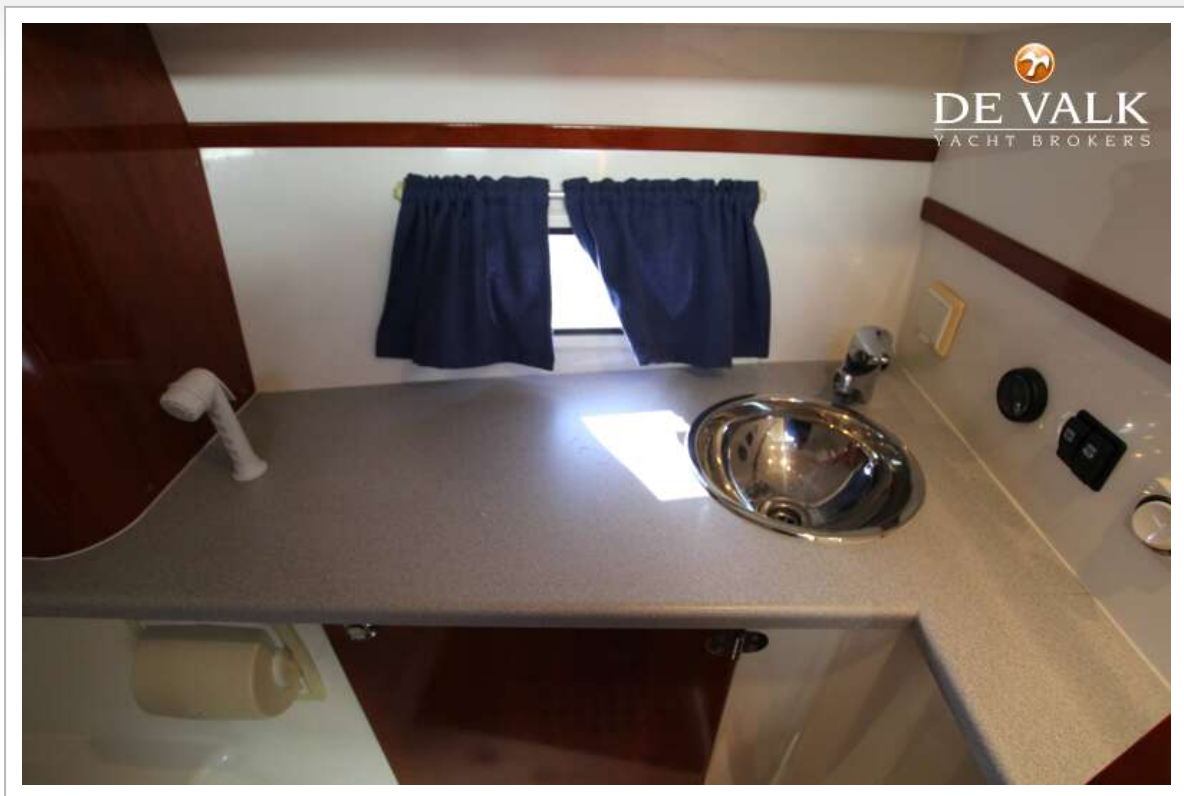




# AQUADOR 32 C



# AQUADOR 32 C





## AQUADOR 32 C

