



ALMKOTTER 1280 AK

ALMKOTTER 1280 AK

BROKER'S COMMENTS

A beautiful, robust Almkotter 12.80 from 2000 from the second owner. Built by Jachtbouw De Alm, which is known for its quality ships. This ship has many options, including a hydraulic bow thruster. With her two reliable Iveco engines, the ship is ideal for maneuvering. She was completely repainted in 2022. This elegant spitsail cutter is waiting for her new owner. From now on to view in Loosdrecht! Make an appointment now!

Mark Hesselmans

SPECIFICATIONS

Dimensions	12.80 x 4.20 x 1.25 (m)	Builder	Jachtbouw De Alm
Built	2000	Cabins	2
Material	Steel	Berths	4
Engine(s)	2 x Iveco diesel	Hp/Kw	2 x 80.00 (hp), 58.88 (kw)
Asking price	sold (VAT)	Lying	at sales office

CONTACT

Sales office	De Valk Loosdrecht B.V.	Telephone	+31 (0)35 582 90 30
Address	't Breukeleveense Meentje 6 1231LM Loosdrecht / Wijdmeren NL	E-mail	loosdrecht@devalk.nl

DISCLAIMER

These particulars are given in good faith as supplied but cannot be guaranteed.



ALMKOTTER 1280 AK

GENERAL

Model	ALMKOTTER 1280 AK
Type	motor yacht
LOA (m)	12,80
Beam (m)	4,20
Draft (m)	1,25
Air draft (m)	5,80
Air draft min (m)	2,95
Headroom (m)	2,00
Year built	2000
Builder	Jachtbouw De Alm
Country	The Netherlands
Displacement (t)	23
CE norm	B
Hull material	steel
Hull colour	blue
Hull shape	hard chine
Superstructure material	steel
Rubbing strake	rubber
Deck material	steel
Deck finish	non-skid paint
Superstructure deck finish	paint
Cockpit deck finish	teak
Window frame	aluminium
Window material	double glazing Partially
Deckhatch	yes
Portholes	aluminium
Mast can be lowered	hydraulic
Fuel tank (litre)	steel 1200
Level indicator (fuel tank)	VDO
Freshwater tank (litre)	stainless steel 2x 500



Level indicator (freshwater)	VDO (defect)
Blackwater tank (litre)	stainless steel 1x 250
Level indicator (blackwater)	Wema
Greywater tank (litre)	stainless steel 1x 350
Level indicator (greywater)	VDO
Wheel steering	hydraulic
Inside helm position	yes
Outside helm position	hydraulic
More info on paintwork	Completely painted 2022

ACCOMMODATION

Cabins	2
Berths	4
Floor	yes
Aft deck	yes
Saloon	yes
Headroom saloon (m)	1,90
Heating	central heating Kabola CV
Air-conditioning	yes
Aft Cabin	yes
Dinette	yes
Opening door to aft deck	yes
Galley	yes
Countertop	plastic
Sink	stainless steel
Cooker	electric 4 pits
Microwave/oven combi	Sharp R-951
Fridge	2x 120 l
Freezer	120 l
Hot water system	on central heating Kabola CV
Water pressure system	electrical



ALMKOTTER 1280 AK

Kettle	Russel Hobbs
Coffee maker	Nespresso
Owners cabin	double bed
Bed length (m)	2,00 m
Wardrobe	hanging and shelves
Bathroom	en suite
Toilet	en suite
Toilet system	electric
Wash basin	in the bathroom
Shower	en suite
Bath tub	en suite
Guest cabin 1	bunk bed
Bed length (m)	1,80 m
Wardrobe	drawers and shelves
Bathroom	en suite
Toilet	en suite
Toilet system	electric
Wash basin	in the bathroom
Shower	en suite
Washing machine	Candy Alise

MACHINERY

No of engines	2
Make	Iveco
HP	80
kW	58.88
Fuel	diesel
Maximum speed (kn)	8
Cruising speed (kn)	6
Engine cooling system	closed keelcooling
Drive	shaft



ALMKOTTER 1280 AK

Shaft seal	yes
Engine controls	electrical & bowden cable
Gearbox	hydraulic
Bowthruster	hydraulic 10 hp
Exhaust	dry
Thrust bearing	yes
Propeller type	fixed
Propeller shaft material	stainless steel
Electric bilge pump	yes
Electrical installation	12v / 24v / 230v
Generator	dry exhaust Kohler 8kva
Batteries	6x 200A + 1x 60A
Start battery	yes
Service battery	yes
Battery monitor	Mastervolt
Battery charger	Mastervolt 24V 50A
Inverter	Mastervolt 24V 2500W
Shorepower	with cable

NAVIGATION

Compass	Contest
Electric compass	Raymarine
Depth sounder	Raytheon ST60
Log	Raytheon ST60
Windset	Raytheon
VHF	Shipmate RS 8300
Autopilot	Raymarine RPG50
Rudder angle indicator	Raytheon
Radar	Raytheon RL70
Plotter/GPS	Raytheon RCG30
Navtex	NASA Marine



Navigation lights

yes

EQUIPMENT

Cockpit cushions

yes

Cockpit table

yes

Boarding ladder

stainless steel

Transom door

yes

Anchor

yes

Anchor chain

yes

Windlass

hydraulic

Windlass aft

manual

Deck wash

yes

Sea railing

stainless steel

Railing side opening gates

yes

Life raft

Won't be delivered

Wiper

4 x

Horn

air pressure

Fenders

yes

Mooring lines

yes

TV

Philips

Clock - barometer

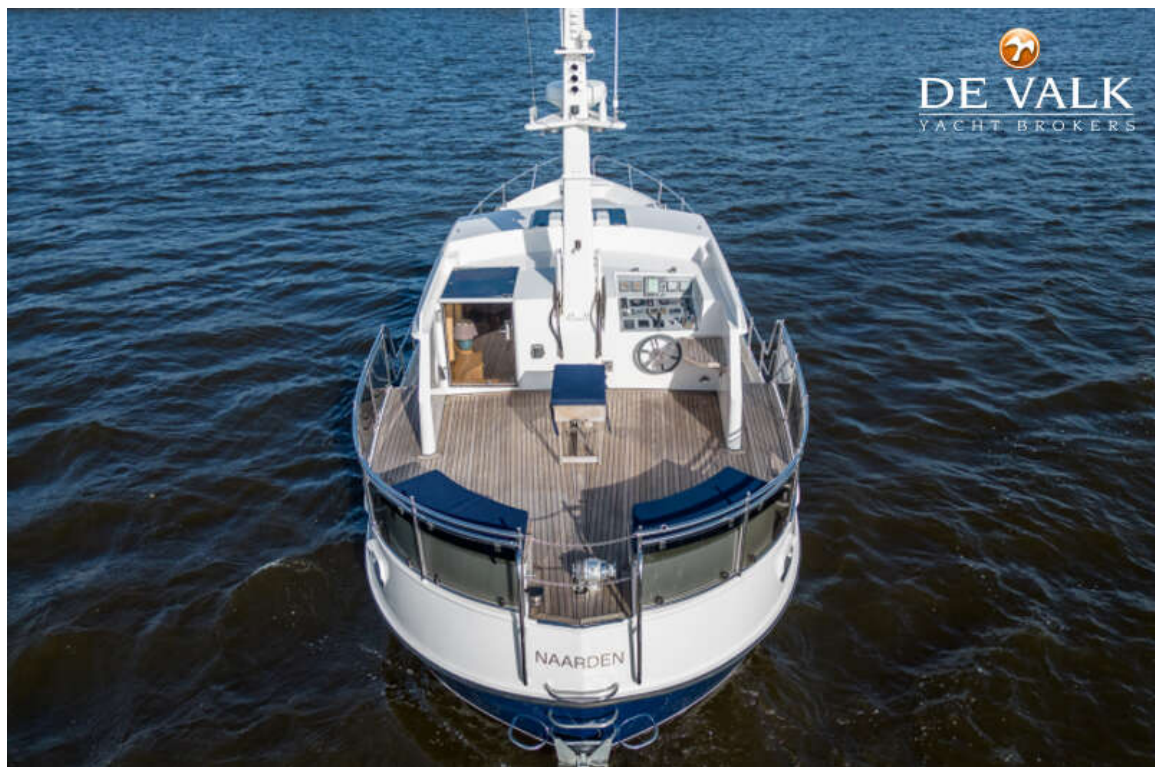
Stockburger



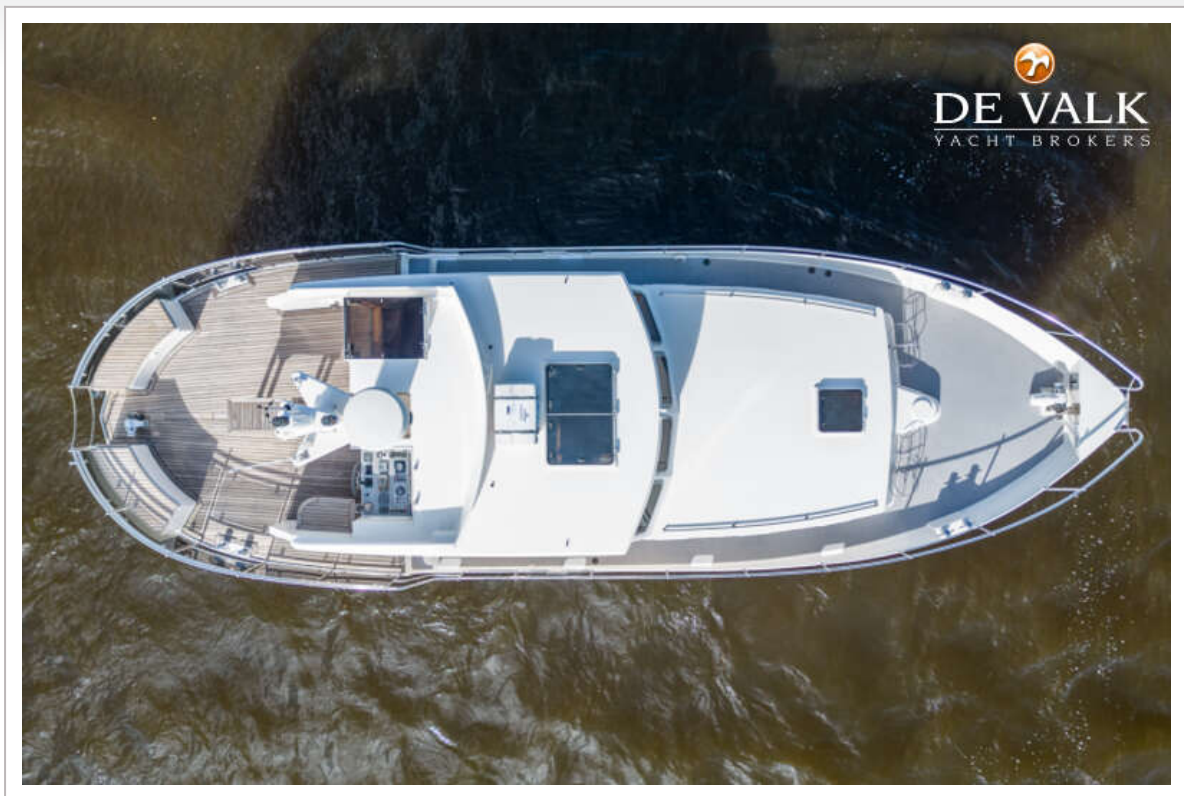
ALMKOTTER 1280 AK



ALMKOTTER 1280 AK



ALMKOTTER 1280 AK



ALMKOTTER 1280 AK



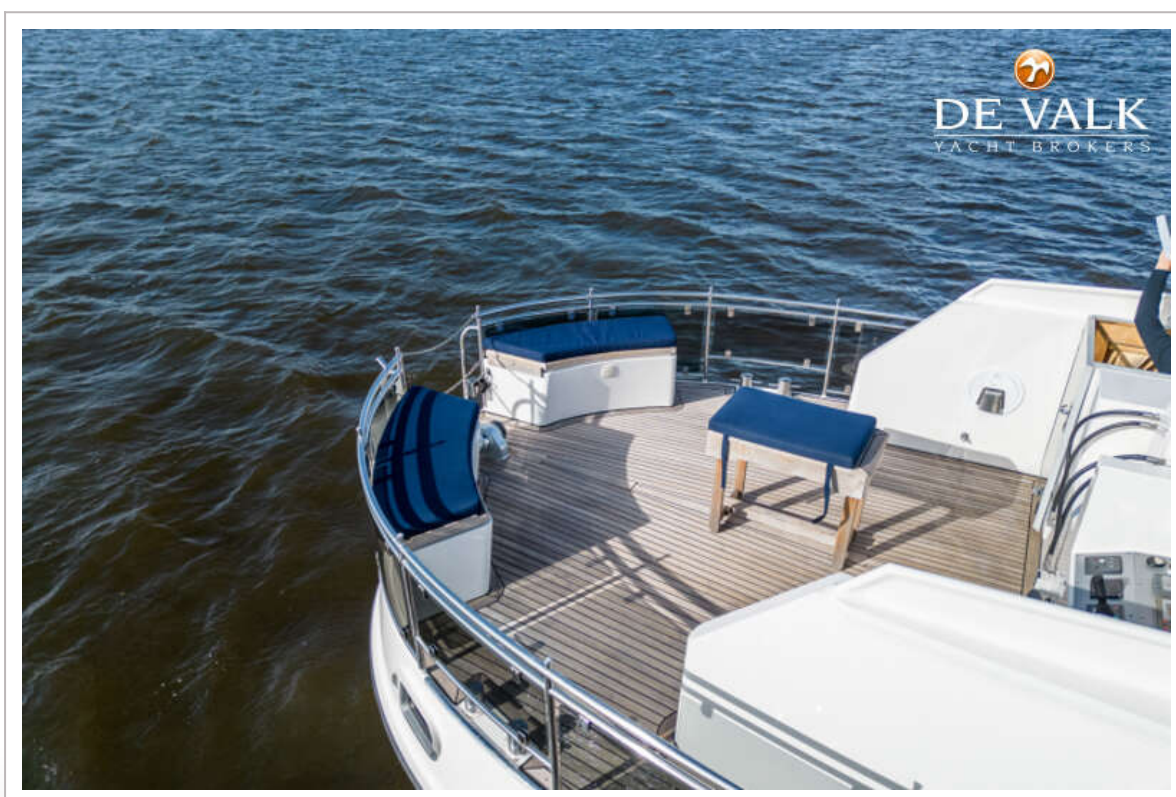
ALMKOTTER 1280 AK



ALMKOTTER 1280 AK



ALMKOTTER 1280 AK



ALMKOTTER 1280 AK



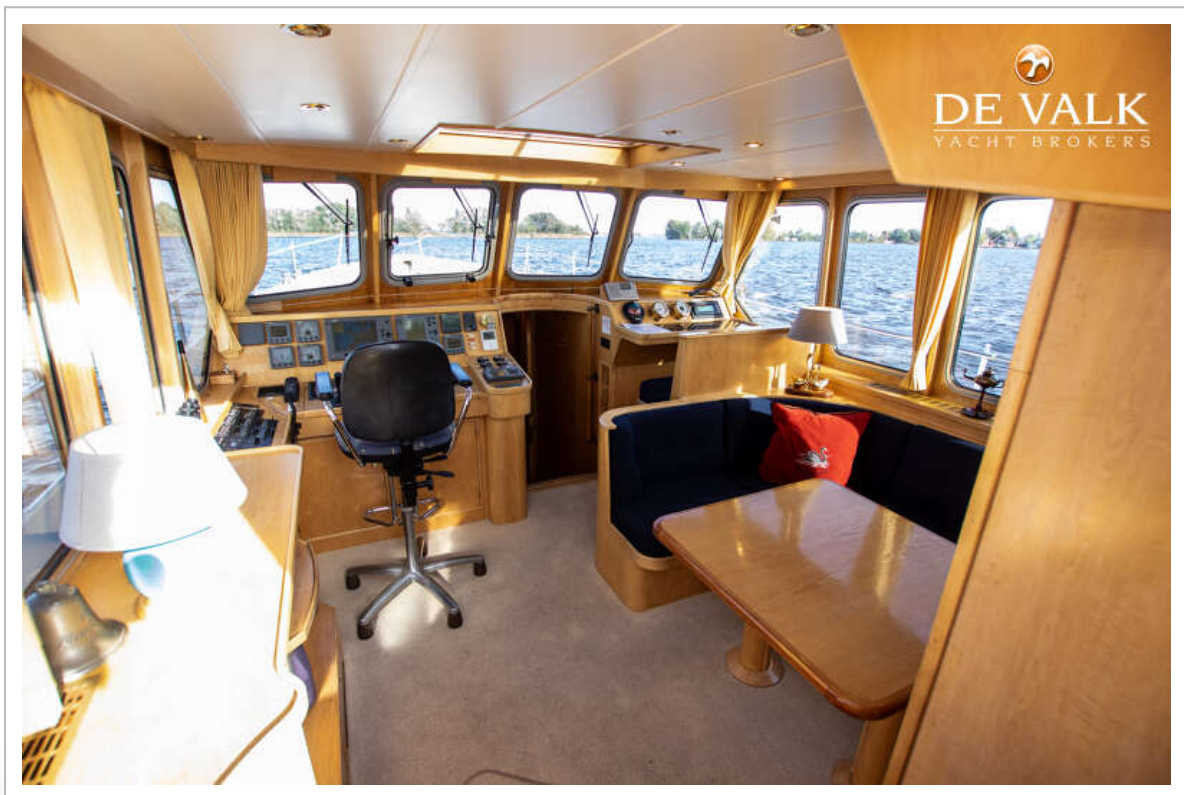
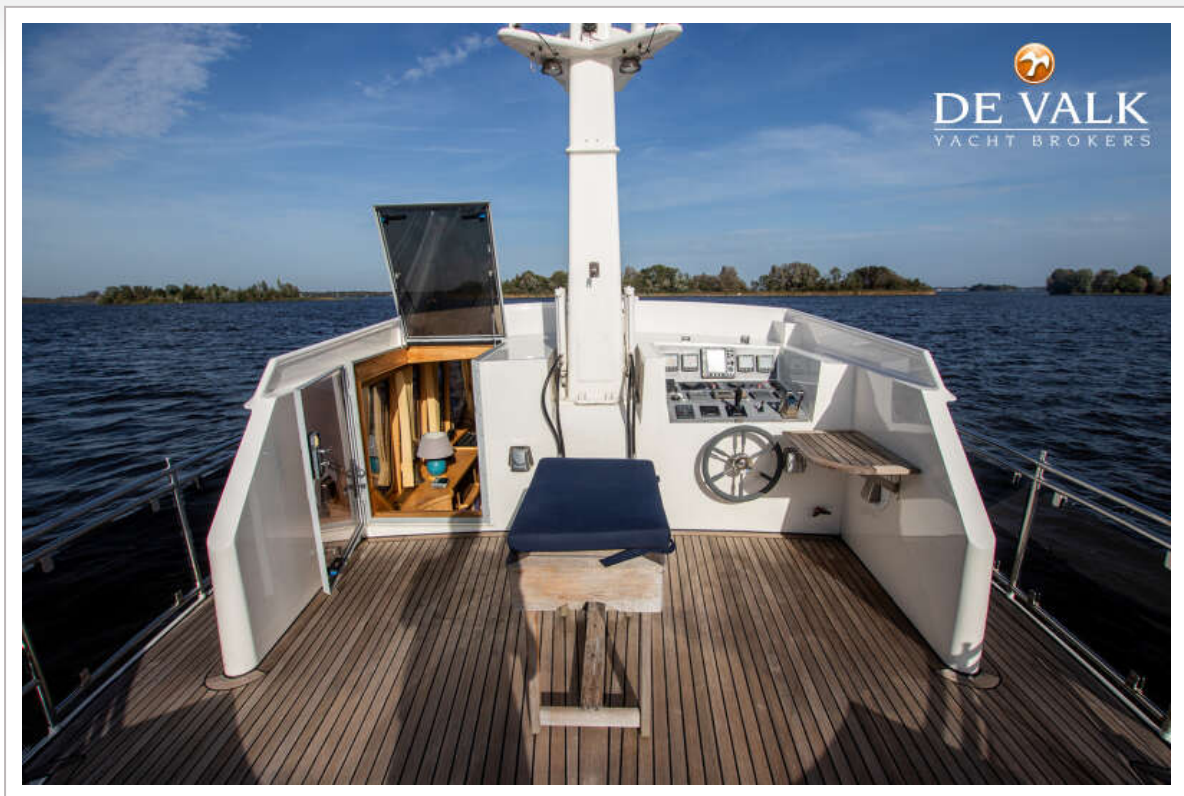
ALMKOTTER 1280 AK



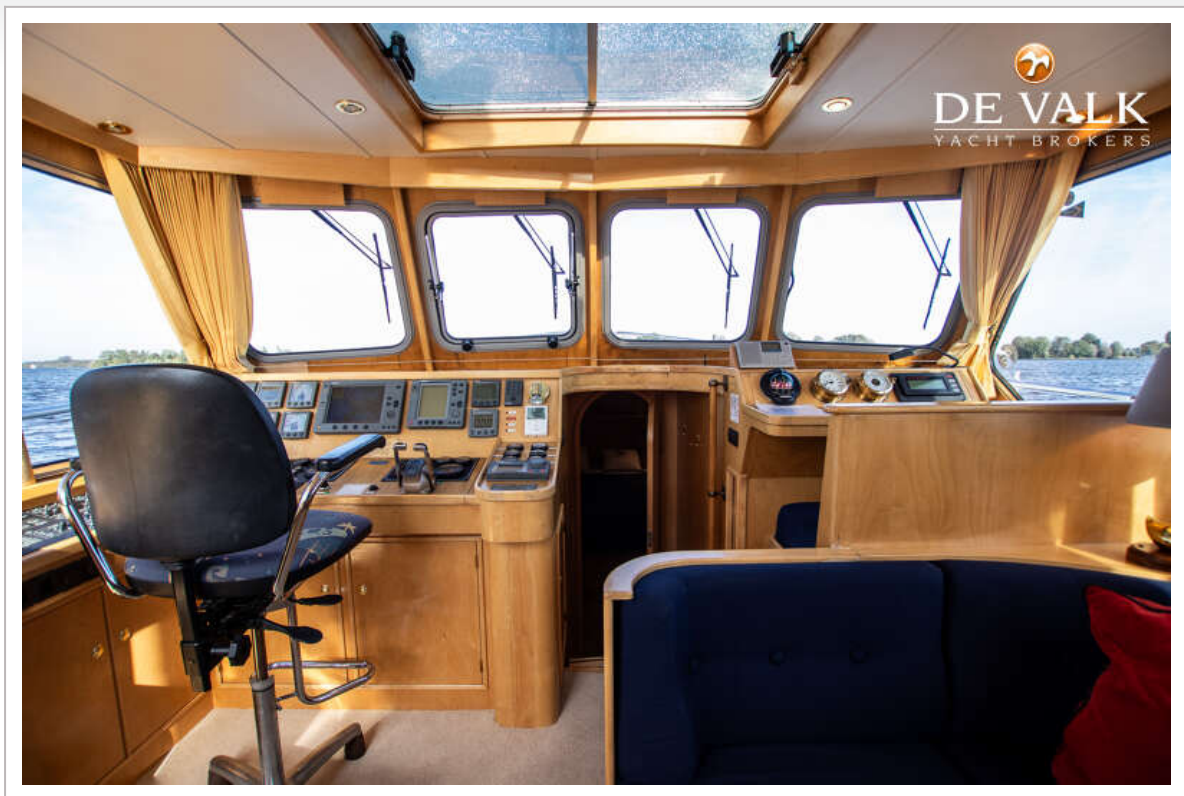
ALMKOTTER 1280 AK



ALMKOTTER 1280 AK



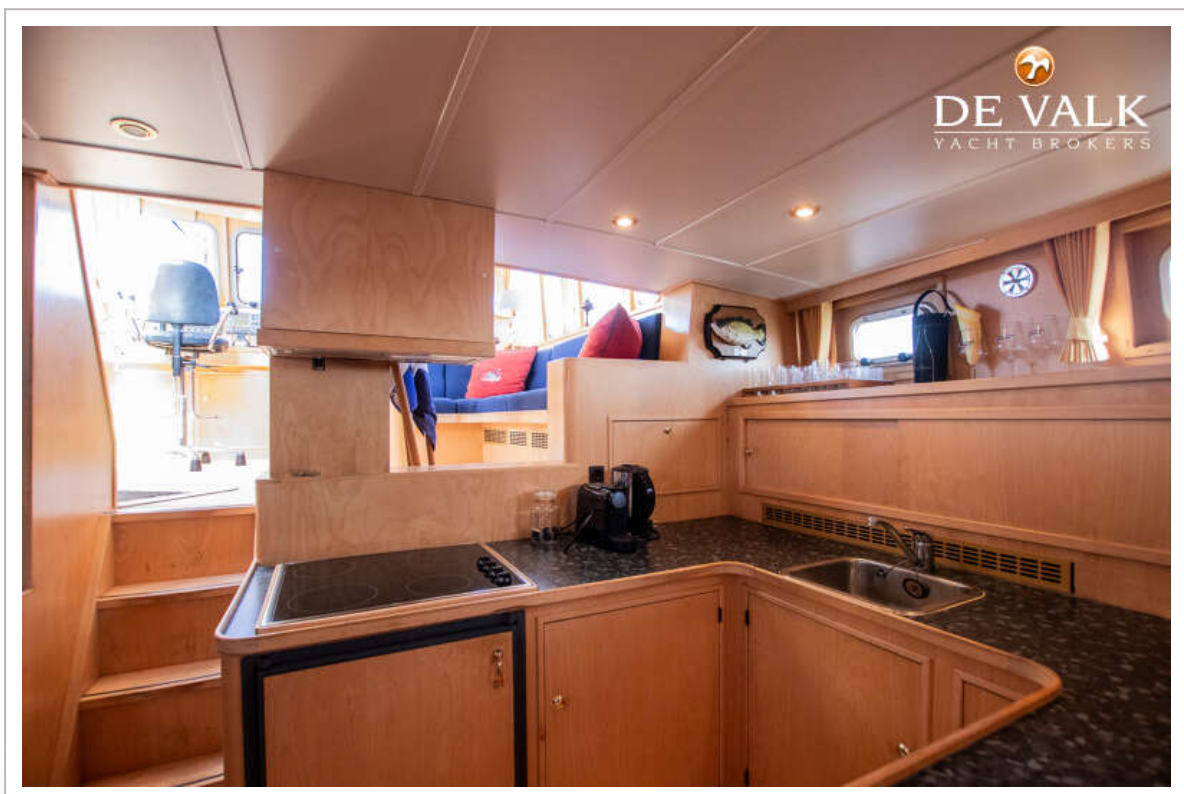
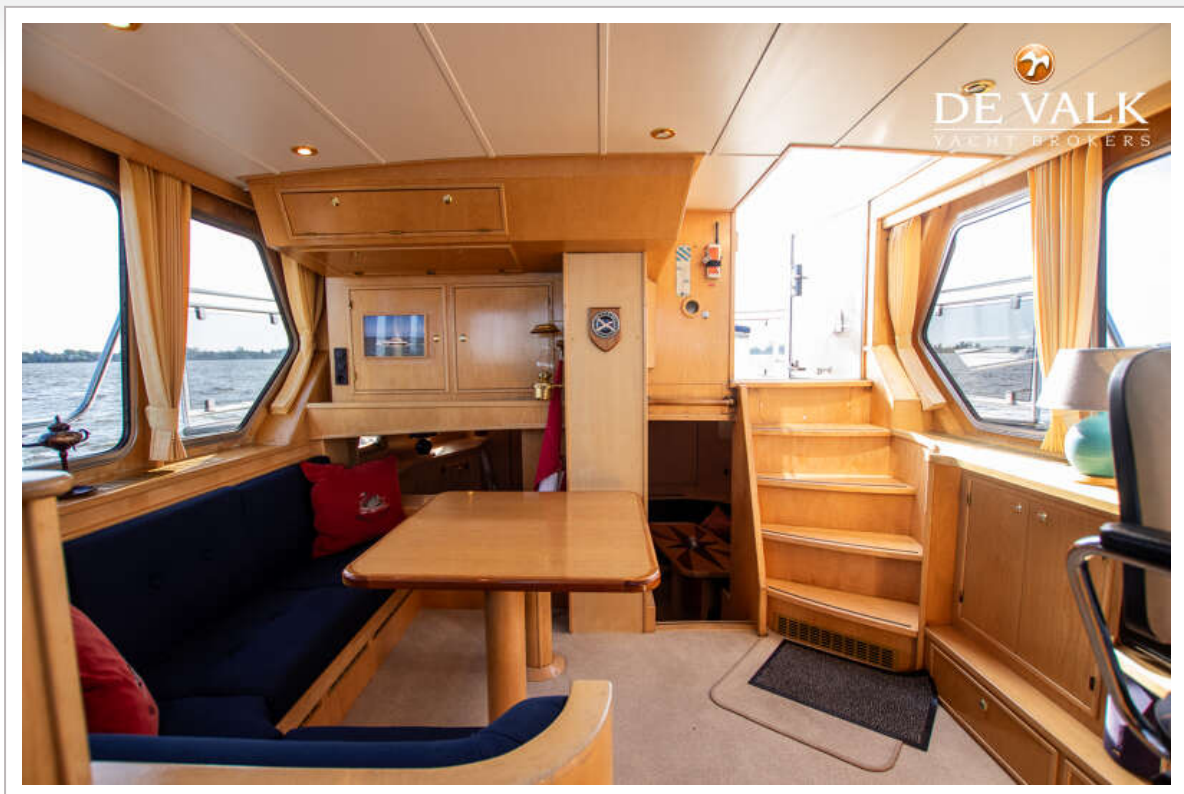
ALMKOTTER 1280 AK



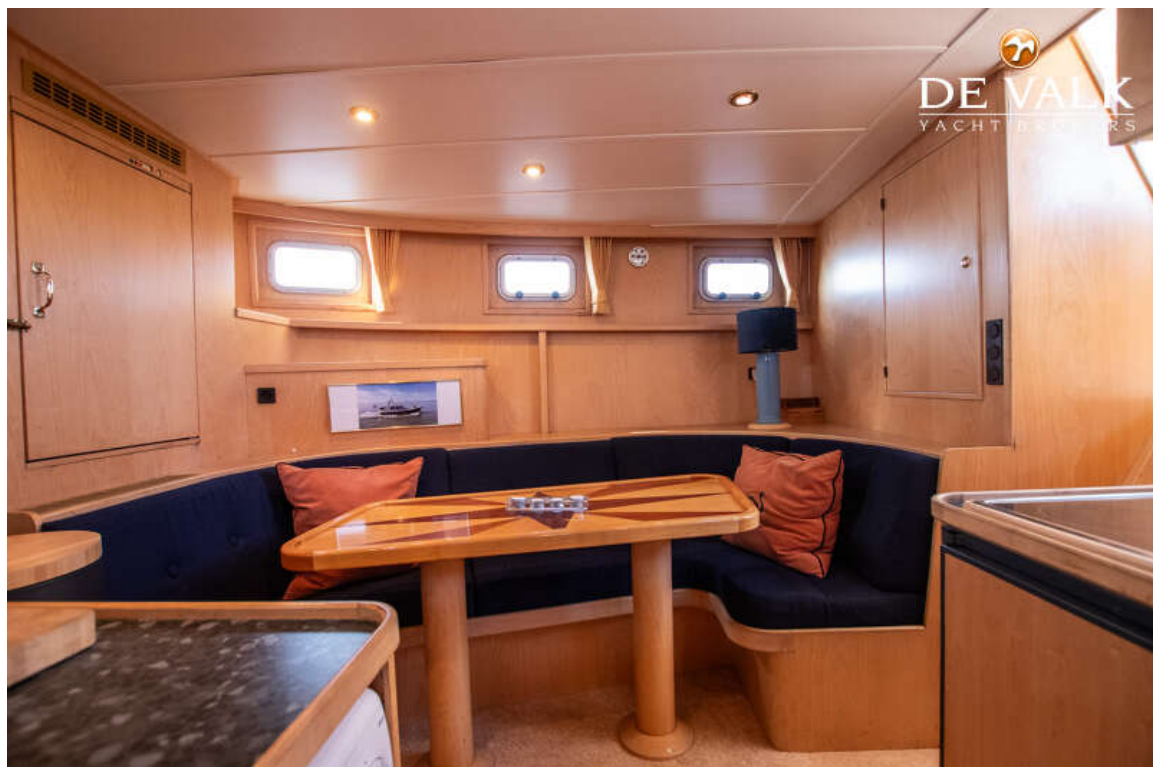
ALMKOTTER 1280 AK



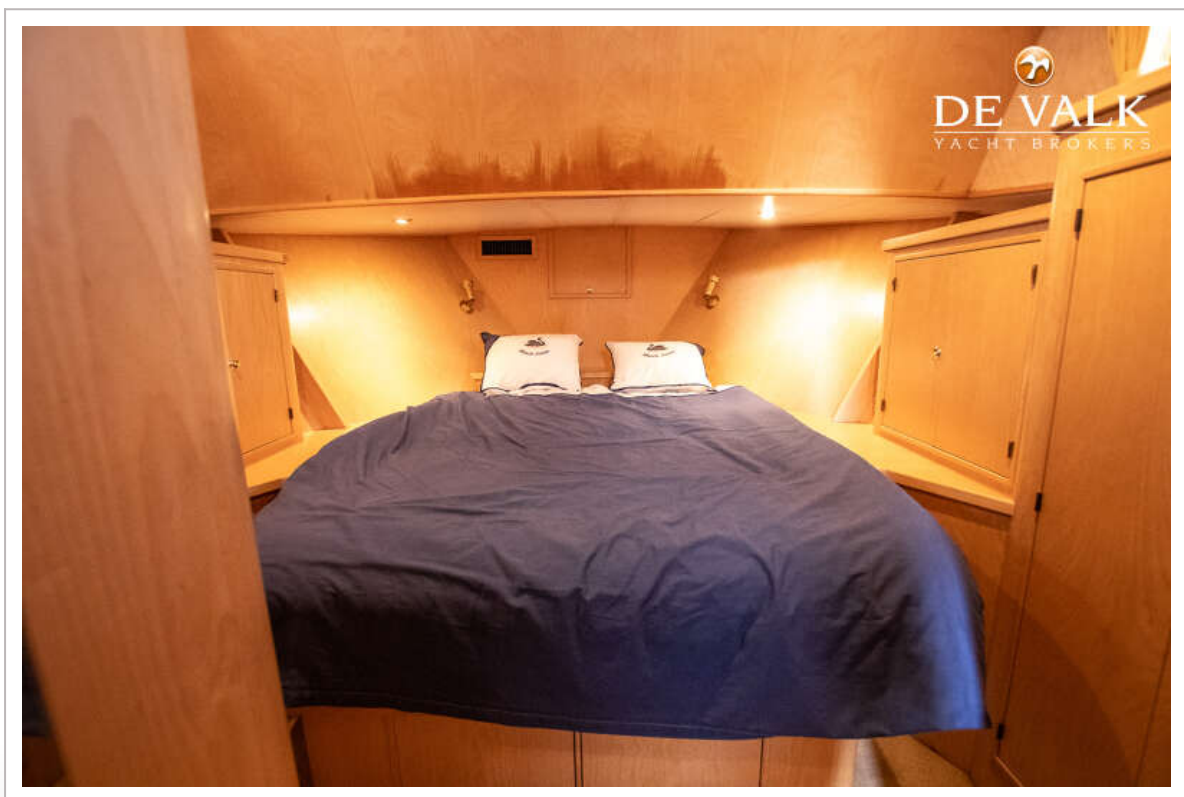
ALMKOTTER 1280 AK



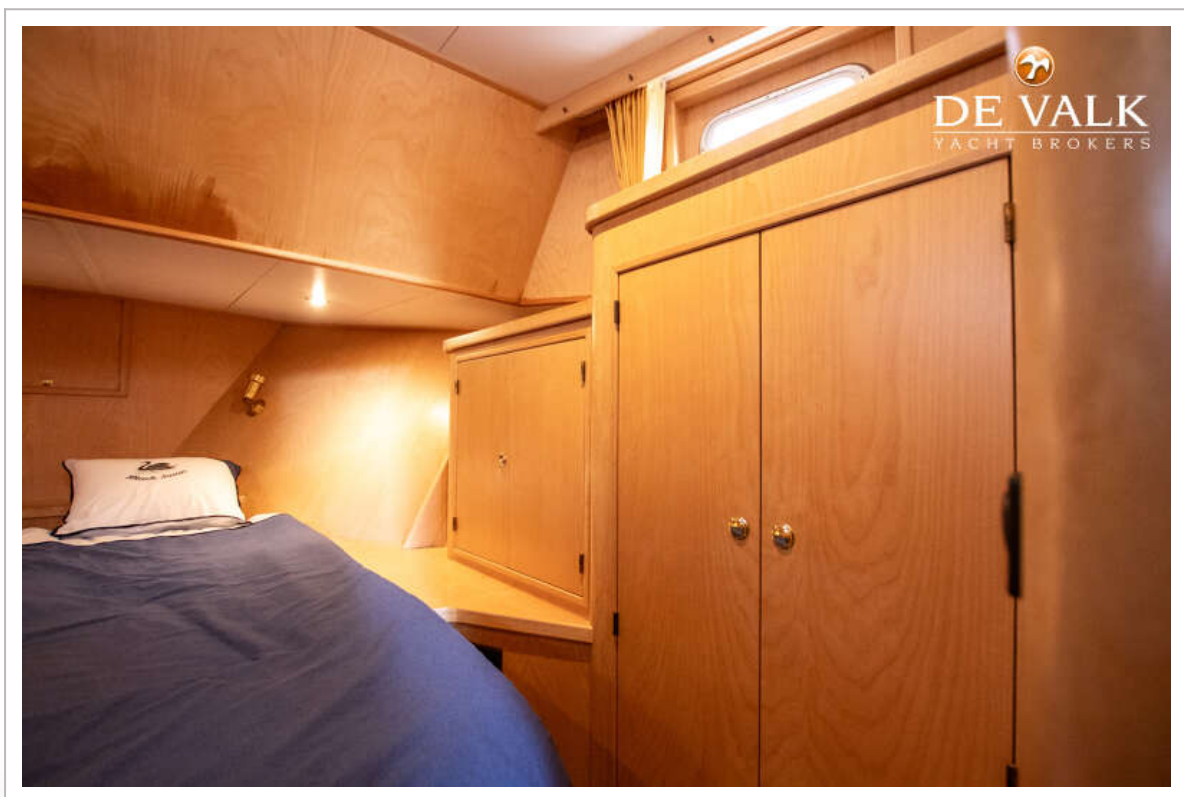
ALMKOTTER 1280 AK



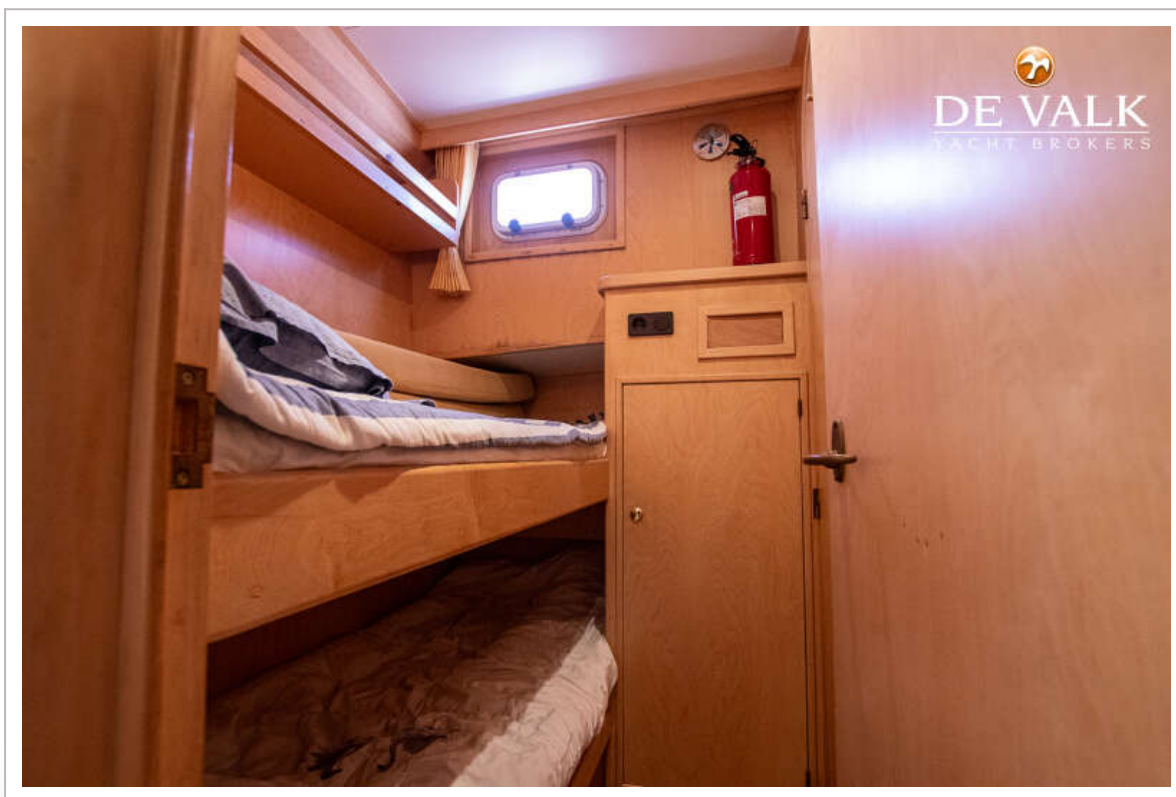
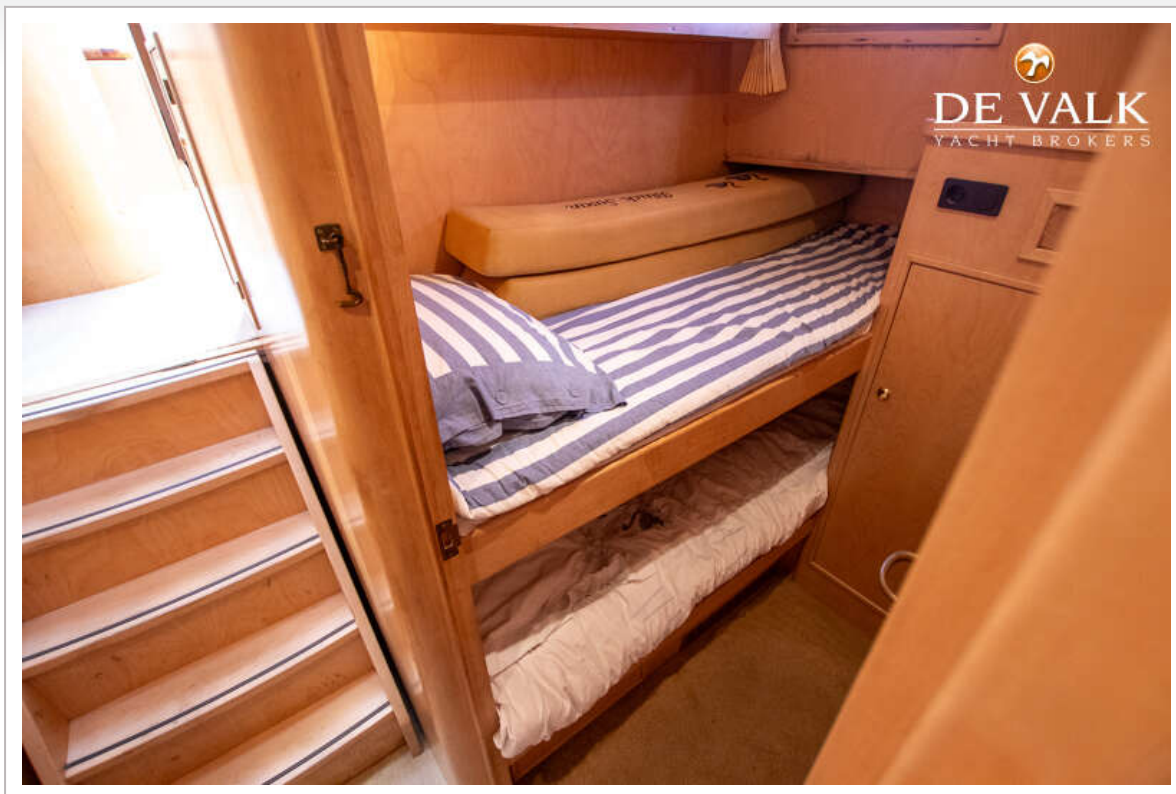
ALMKOTTER 1280 AK



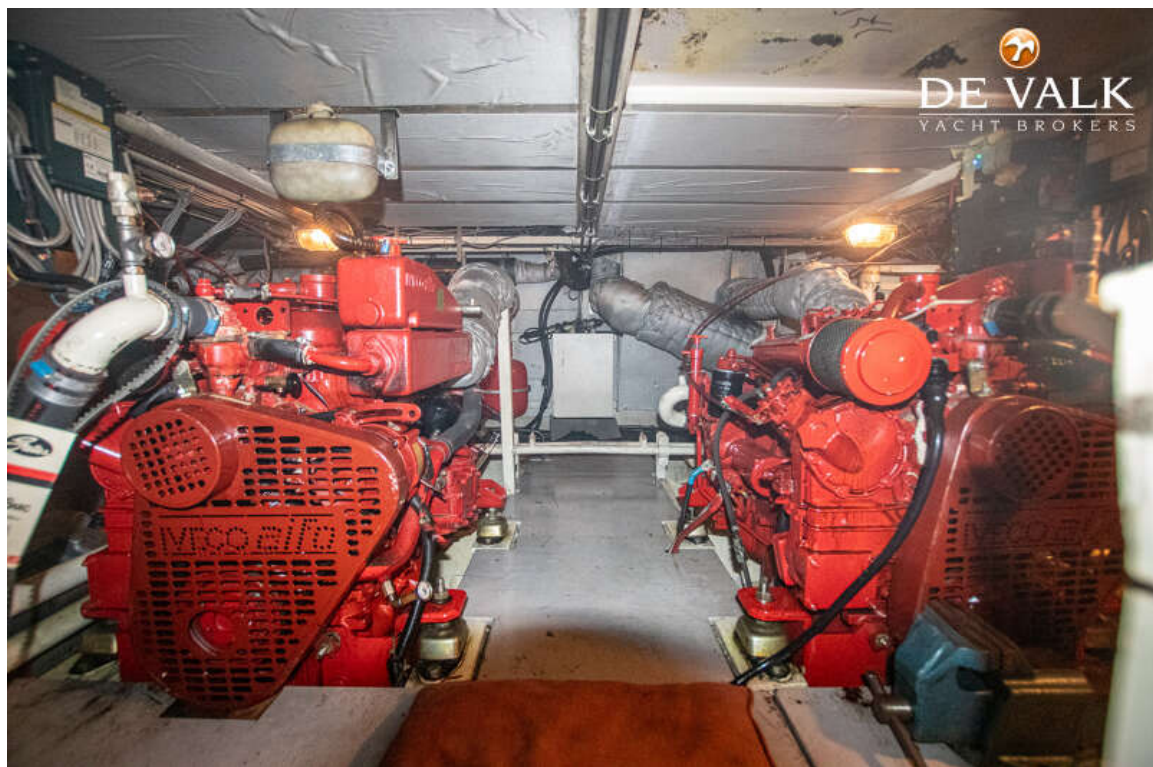
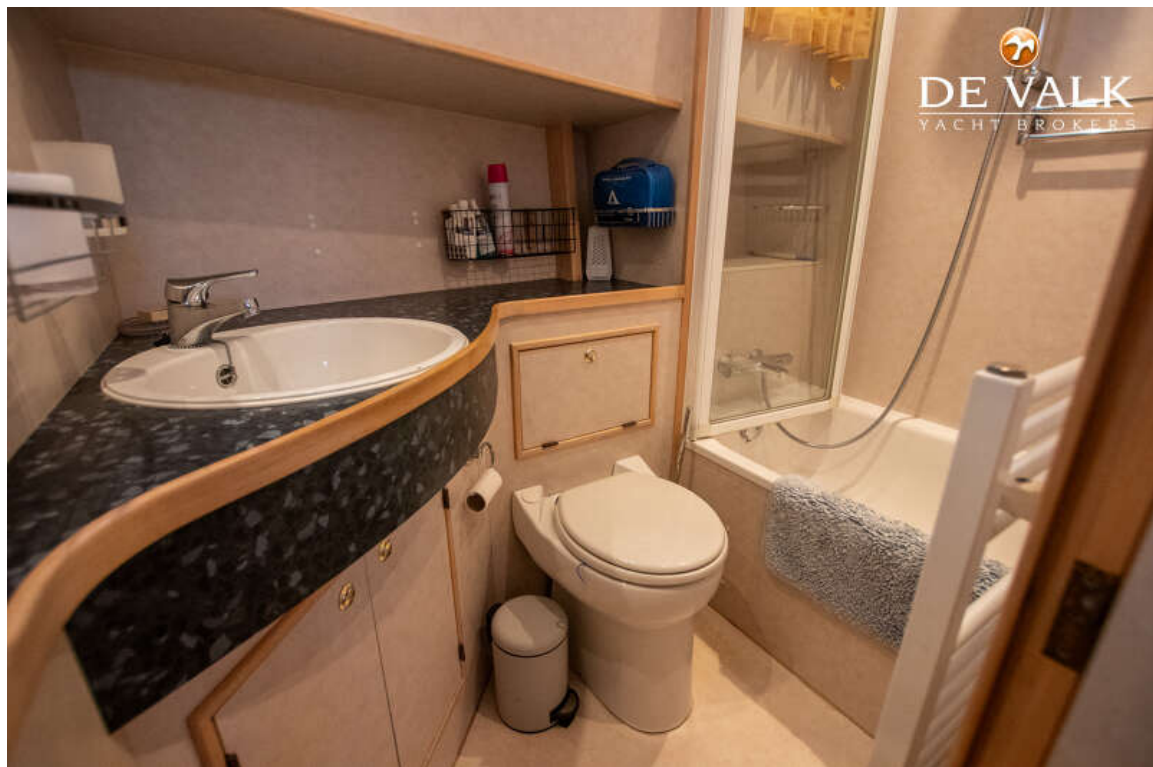
ALMKOTTER 1280 AK



ALMKOTTER 1280 AK



ALMKOTTER 1280 AK



ALMKOTTER 1280 AK

