



DE VALK  
YACHT BROKERS



## BAVARIA 46 CRUISER



DE VALK  
YACHT BROKERS

# BAVARIA 46 CRUISER

## BROKER'S COMMENTS

The Bavaria 46 Cruiser is designed by Bruce Farr and offers Modern styling, stunning looks, comfort and sail performance. With her twin furling sails, new engine + saildrive and powerful bow-thruster this Bavaria 46 Cruiser is very easy to handle. Below decks she has a 4 cabin layout with the "flex cabin bulkhead" in the front so you can customize the layout into 2 separate cabins or 1 big owners cabin. The cockpit is very spacious in her class and with twin steering wheels easy to access from the fold-out bathing platform. Asking price excluding VAT.

*Joris van de Rijt*

## SPECIFICATIONS

<b>Dimensions</b>	14.27 x 4.35 x 2.18 (m)	<b>Builder</b>	Bavaria Yachtbau
<b>Built</b>	2014	<b>Cabins</b>	4
<b>Material</b>	GRP	<b>Berths</b>	9
<b>Engine(s)</b>	1 x Volvo Penta D2-60F diesel	<b>Hp/Kw</b>	60.00 (hp), 44.16 (kw)
<b>Asking price</b>	sold (VAT )	<b>Lying</b>	at sales office

## CONTACT

<b>Sales office</b>	De Valk Sint Annaland B.V.	<b>Telephone</b>	+31 (0)166 601 000
<b>Address</b>	Koelhuisweg 4 4697 RM Sint Annaland NL	<b>E-mail</b>	sintannaland@devalk.nl

## DISCLAIMER

These particulars are given in good faith as supplied but cannot be guaranteed.



# BAVARIA 46 CRUISER

## GENERAL

Model	BAVARIA 46 CRUISER
Type	sailing yacht
LOA (m)	14,27
LWL (m)	12,90
Beam (m)	4,35
Draft (m)	2,18
Air draft (m)	21,20
Headroom (m)	2,07
Year built	2014
Builder	Bavaria Yachtbau
Country	Germany
Designer	Farr Yacht Design
Displacement (t)	12,6
Ballast (tonnes)	cast iron 3,4
CE norm	A
Hull material	GRP
Hull colour	white
Hull shape	round-bilged
Keel type	fin keel Deep draft keel (2,18m)
Superstructure material	GRP
Rubbing strake	aluminum
Deck material	GRP
Deck finish	non-skid moulded in
Superstructure deck finish	non-skid moulded in
Cockpit deck finish	teak
Antifouling (year)	Winter 2023/2024
Window material	perspex
Deckhatch	4 x big, 3 x small
Fuel tank (litre)	polyethylene 210
Level indicator (fuel tank)	(new 2022)



# BAVARIA 46 CRUISER

Freshwater tank (litre)	polyethylene 210 + 150
Level indicator (freshwater)	yes
Blackwater tank (litre)	polyethylene 3 x 70
Blackwater tank extraction	deck extraction + uw line
Wheel steering	chain steering 2 x Jefa
Emergency tiller	yes

## ACCOMMODATION

Cabins	4
Berths	9
Floor	woodprint
Saloon	yes
Headroom saloon (m)	2,07
Heating	diesel ducted hot air Webasto
Chart table	yes
Aft Cabin	2 x
Dinette	yes
Galley	yes
Countertop	plastic
Sink	stainless steel
Cooker	calor gas 2 burner
Oven	yes
Fridge	Frontloader + toploader
Freezer	In frontloader fridge
Hot water system	220V + engine
Water pressure system	electrical
Owners cabin	v-bed Front cabin can be converted into 2 cabins or 1 big cabin.
Bed length (m)	2,05
Wardrobe	hanging/drawers/shelves
Bathroom	en suite I
Toilet	separate



# BAVARIA 46 CRUISER

Toilet system	manual Jabsco
Wash basin	in the bathroom
Shower	separate
Guest cabin 1	double bed
Bed length (m)	2,00 x 1,45
Wardrobe	hanging and shelves
Bathroom	en suite II
Toilet	en suite
Toilet system	manual Jabsco
Wash basin	in the bathroom
Shower	en suite
Guest cabin 2	double bed
Bed length (m)	2,00 x 1,45
Wardrobe	hanging and shelves
Bathroom	en suite III
Toilet	en suite
Toilet system	manual
Wash basin	in the bathroom Jabsco

## MACHINERY

No of engines	1
Make	Volvo Penta
Type	D2-60F
HP	60
kW	44.16
Fuel	diesel
Year installed	2024
Engine hours	139
Engine cooling system	freshwater heat exchanger
Drive	sail-drive
Saildrive seal	2024 (together with new engine + saildrive)



# BAVARIA 46 CRUISER

Engine controls	bowden cable
Gearbox	mechanical
Bowthruster	electric Sleipner (serviced 2024)
Propeller type	fixed (2024)
Propeller blades	3
Manual bilge pump	yes
Electric bilge pump	yes
Electrical installation	12V / 220V
Start battery	1 x
Service battery	3 x 95Ah
Bowthruster battery	1 x
Battery monitor	Bavaria panel
Battery charger	Cristec 12/40
Shorepower	with cable
Extra info	New engine + new saildrive 2024

## NAVIGATION

Compass	Plastimo
Depth sounder	Garmin
Log	Garmin
Windset	Garmin (new windtopunit 2022)
VHF	Garmin
Autopilot	Garmin
Rudder angle indicator	On autopilot
Plotter	Garmin (2022)
Electronis chart(s)	yes
AIS receiver	Garmin
Navigation lights	(new aquasignal toplight 2022)

## EQUIPMENT

Sprayhood	InSails (2024)
-----------	----------------



# BAVARIA 46 CRUISER

Cockpit table	yes
Bathing platform	Complete platform replaced in 2024 (teak not yet placed)
Boarding ladder	stainless steel
Deck shower	Hot + cold at swimming platform
Anchor	Delta
Anchor chain	yes
Windlass	electrical Quick
Sea railing	wire
Grab rail (superstructure)	stainless steel
Railing side opening gates	2 x
Pushpit	yes
Pulpit	yes
Radar reflector	yes
Fenders	yes
Mooring lines	yes
TV	Salora
Radio-cd player	Pioneer
Cockpit speakers	yes
Speakers in salon	yes
Fire extinguisher	yes

## RIGGING

Rigging	fractional
Standing rigging	wire
Brand mast	Seldén
Material mast	aluminium
Spreaders	2 sets
Mainsail	Creek sails (2022)
Stoway mast	(new Linedriver 2024)
Genoa	Creek sails (2024)
Genoa furler	Furlex



# BAVARIA 46 CRUISER

<b>Reefing System</b>	main in-mast furling
<b>Backstay adjuster</b>	mechanical
<b>Boomvang</b>	gasspring Selden
<b>Genoa sheetwinches</b>	2 x Lewmar 50ST
<b>Halyard winches</b>	2 x Lewmar 45ST





# BAVARIA 46 CRUISER



# BAVARIA 46 CRUISER



# BAVARIA 46 CRUISER



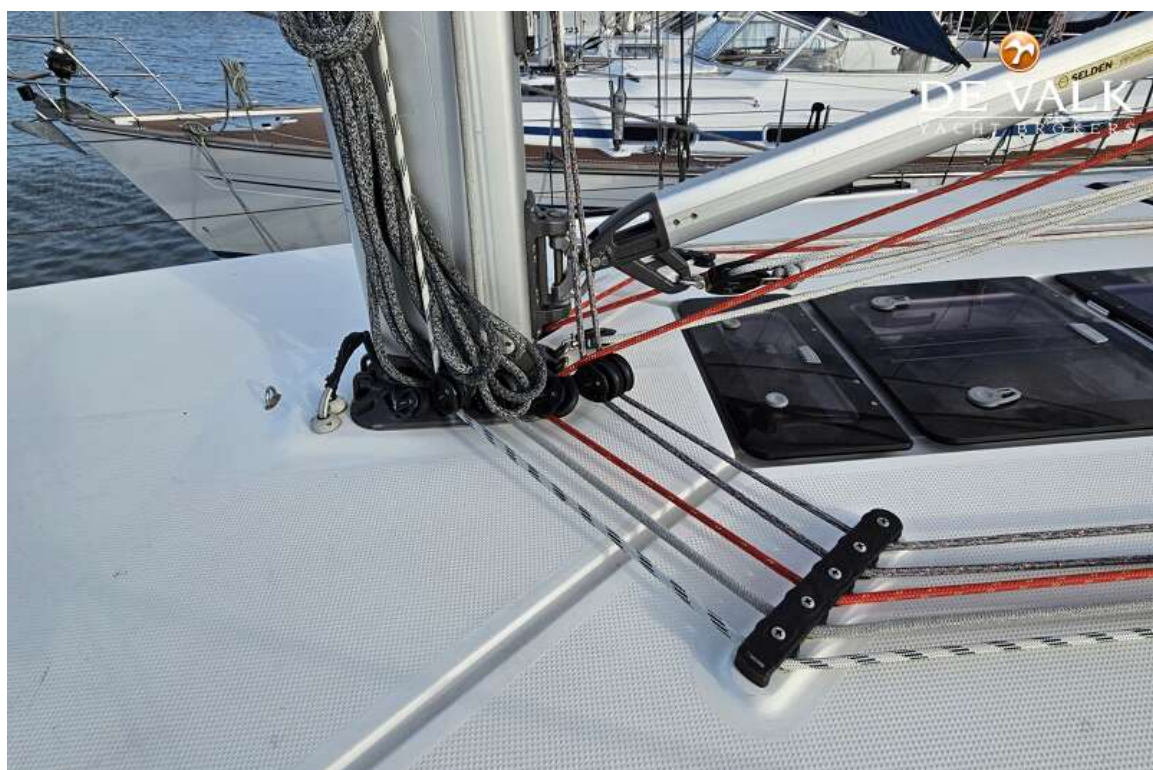


# BAVARIA 46 CRUISER





# BAVARIA 46 CRUISER



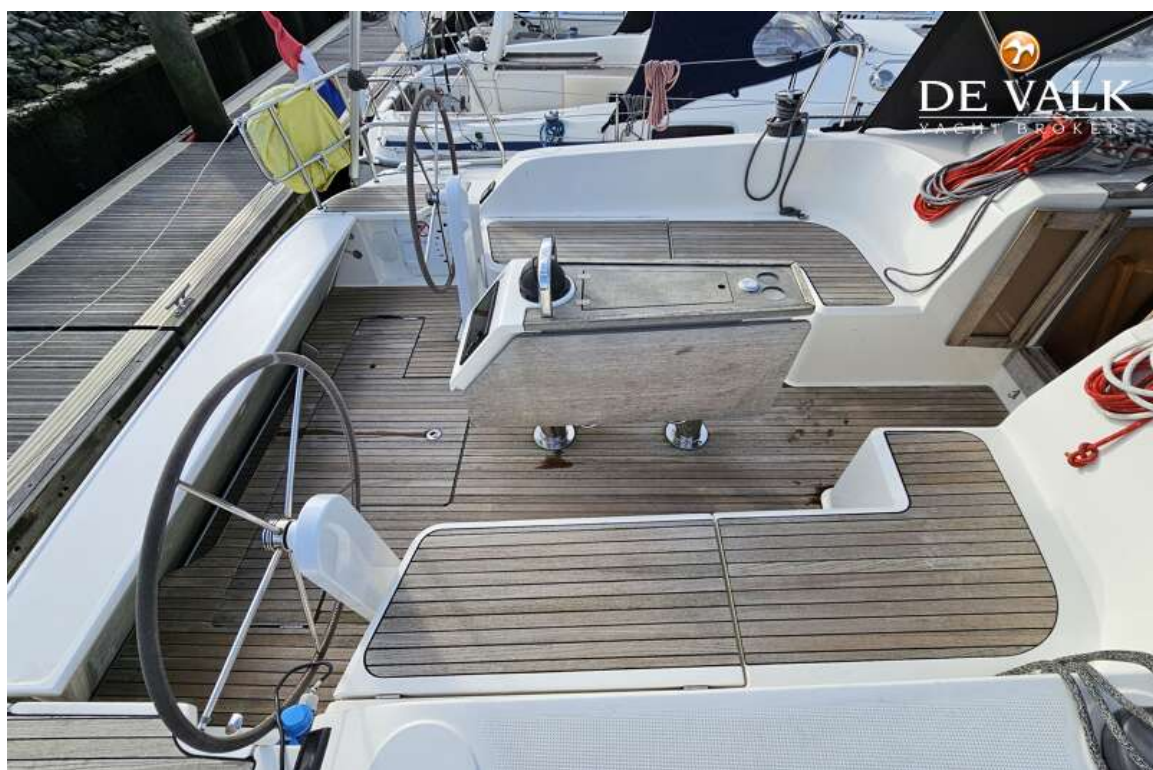


# BAVARIA 46 CRUISER





# BAVARIA 46 CRUISER





# BAVARIA 46 CRUISER



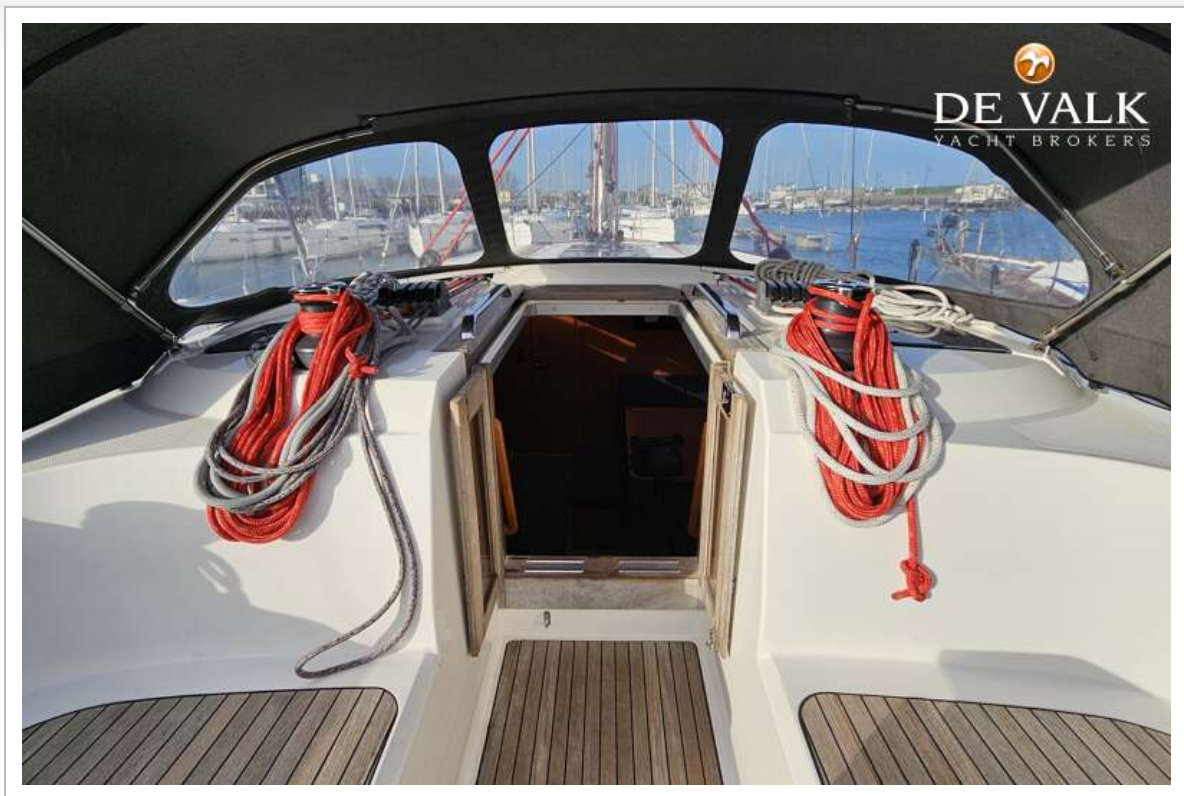


# BAVARIA 46 CRUISER





# BAVARIA 46 CRUISER



# BAVARIA 46 CRUISER

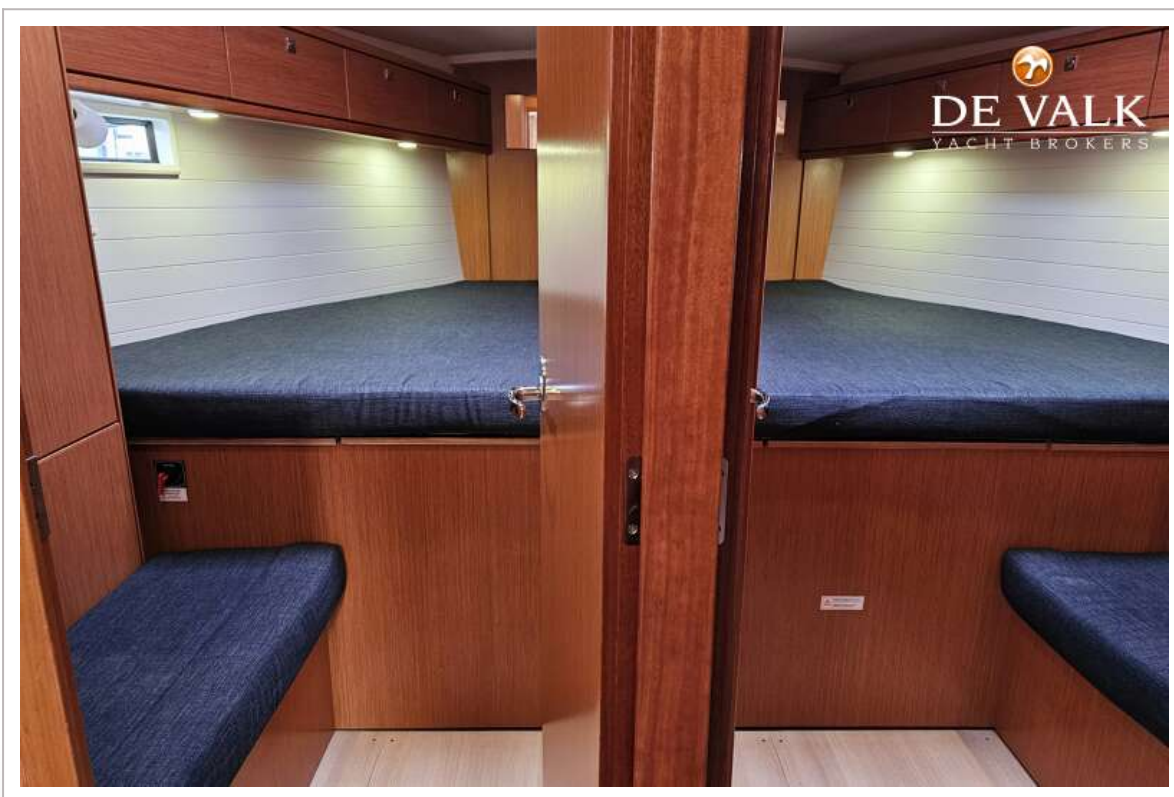
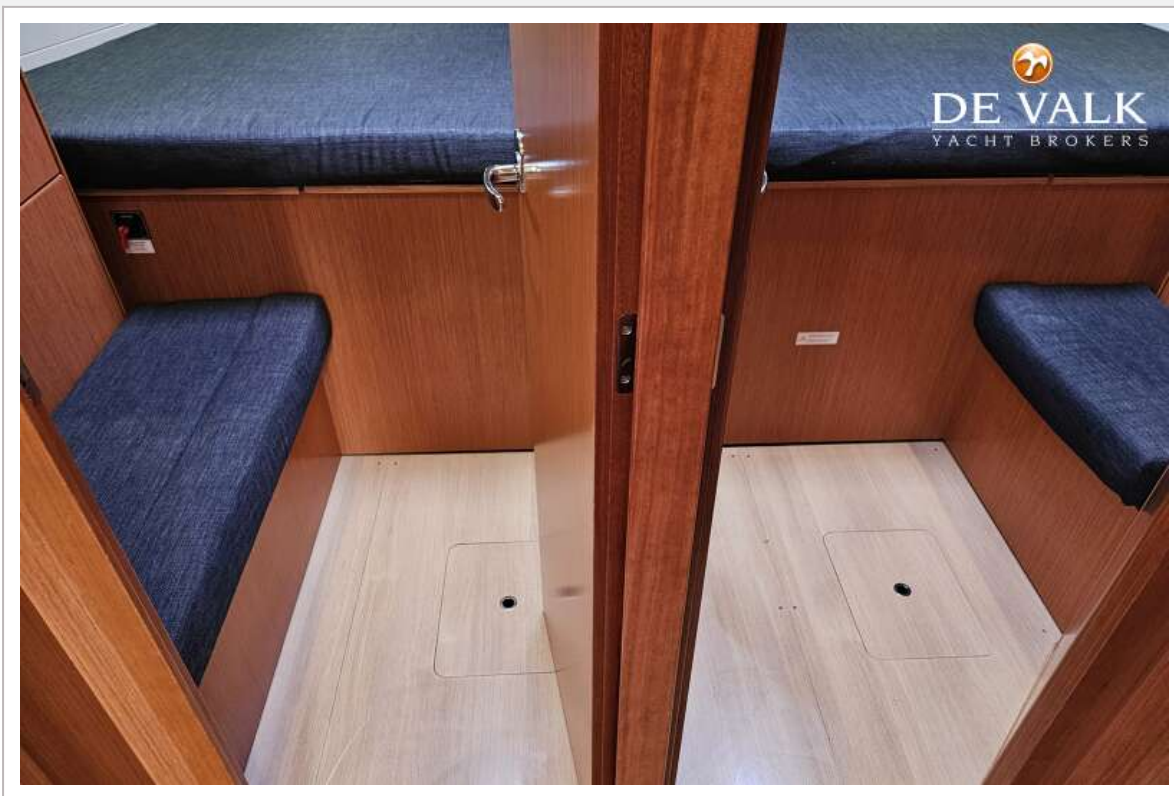




# BAVARIA 46 CRUISER

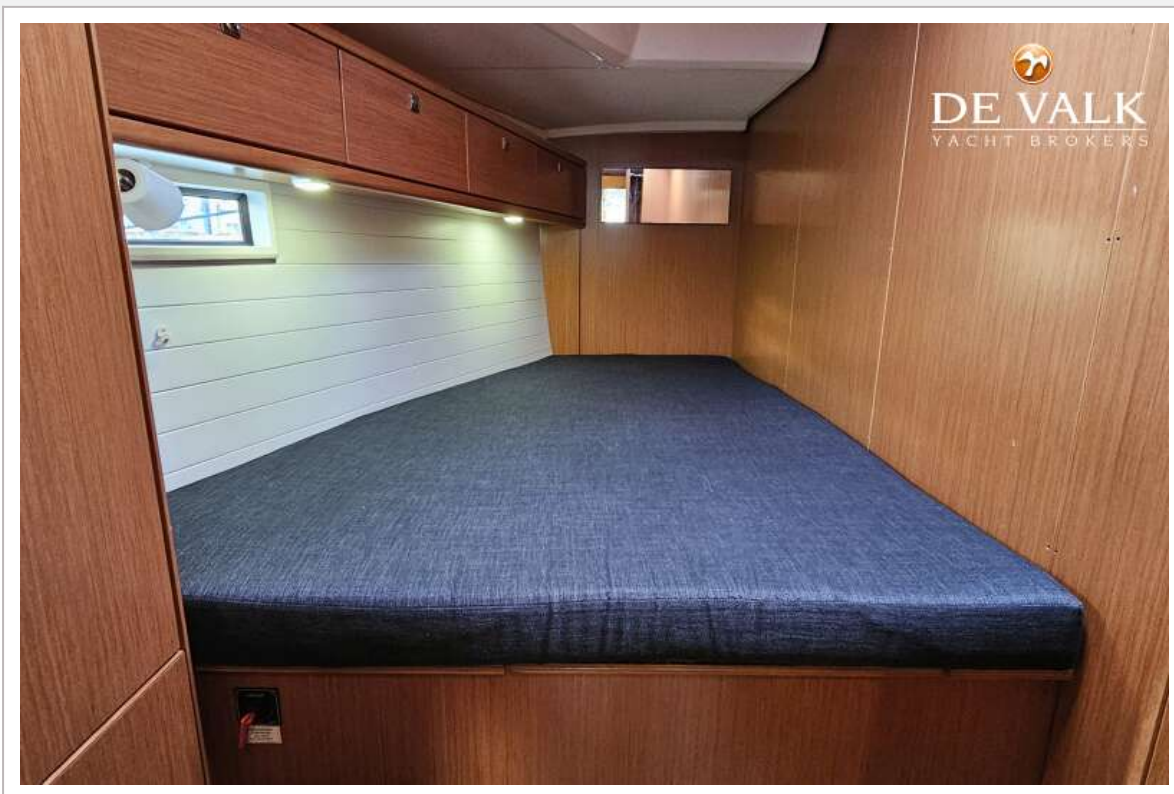


# BAVARIA 46 CRUISER

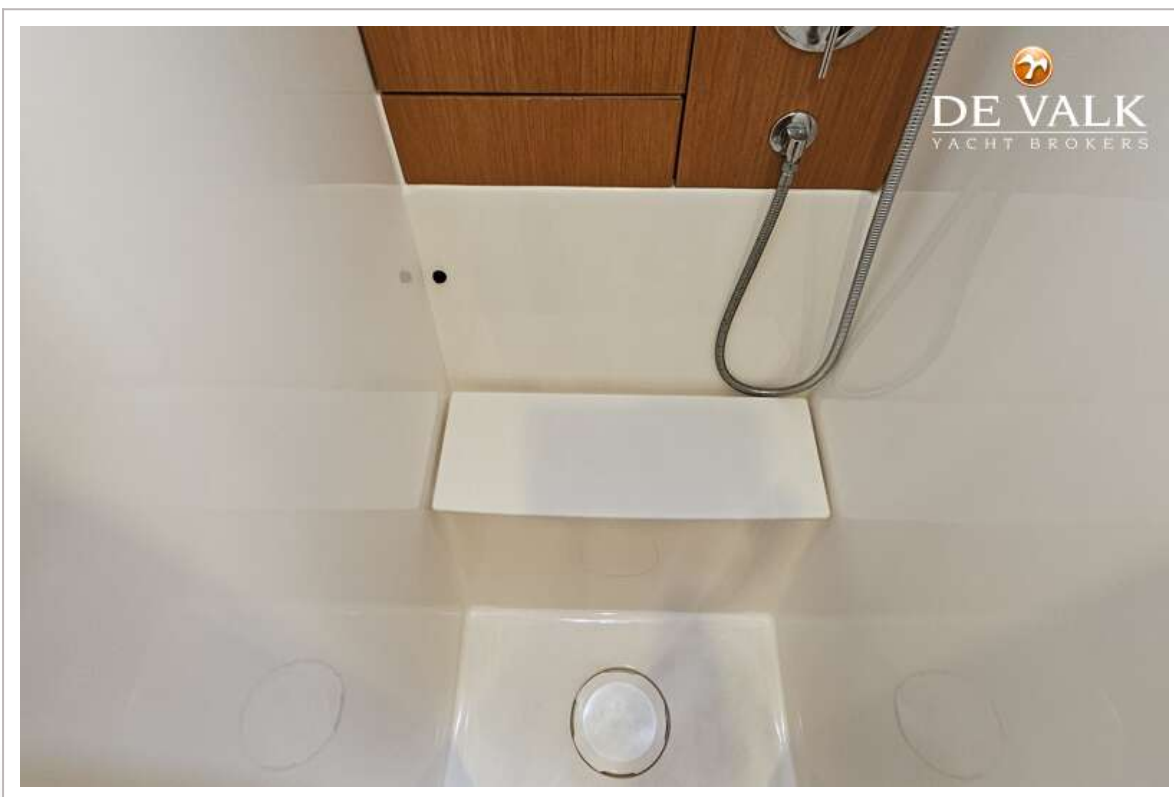




# BAVARIA 46 CRUISER



# BAVARIA 46 CRUISER



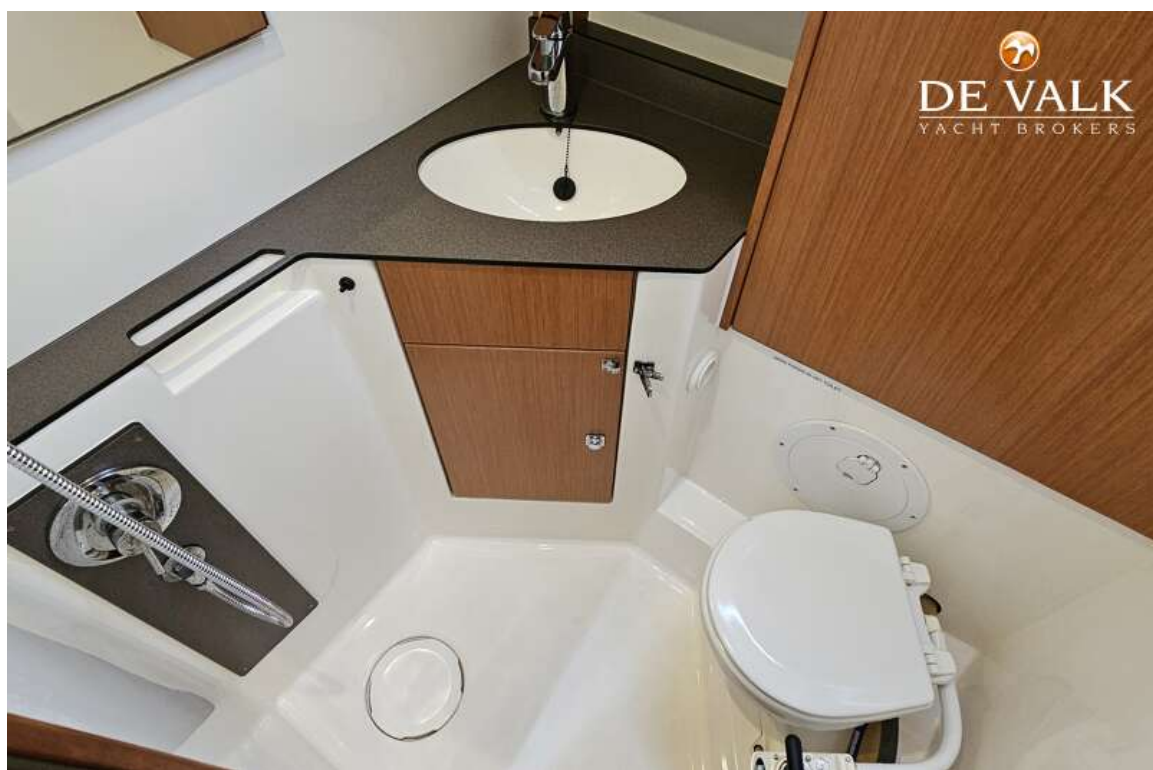


# BAVARIA 46 CRUISER

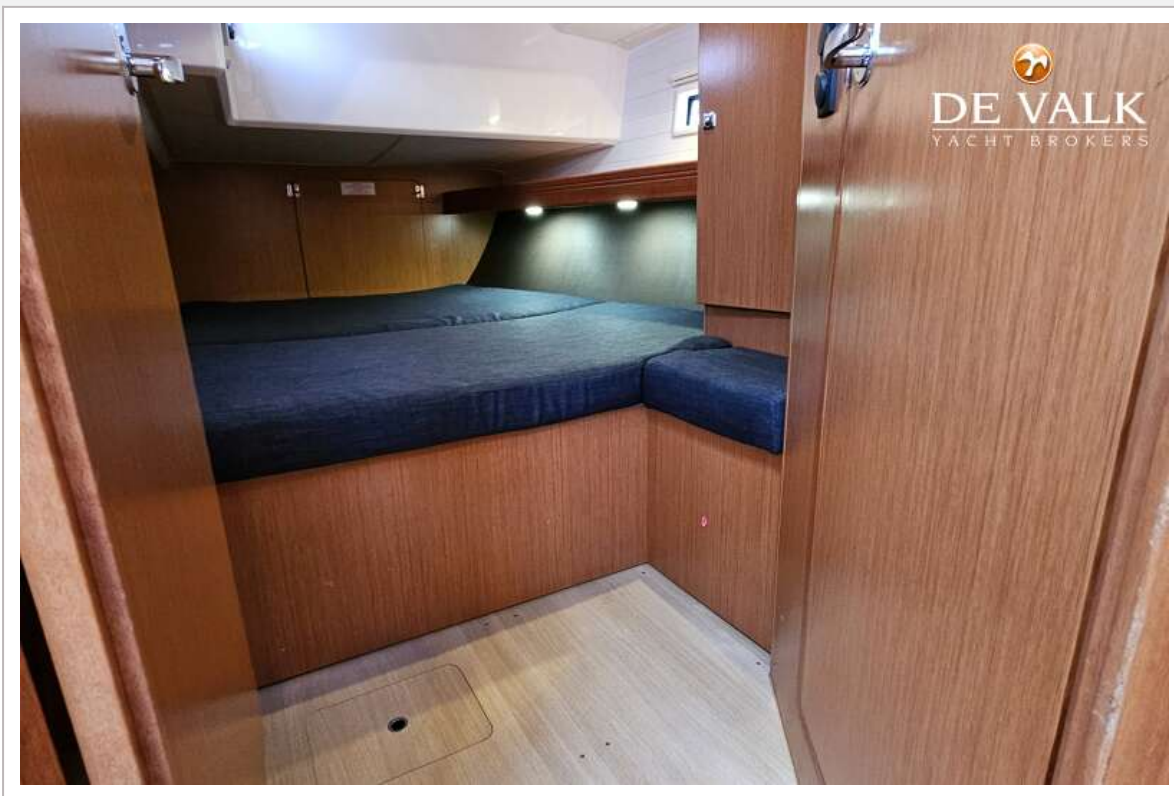




# BAVARIA 46 CRUISER

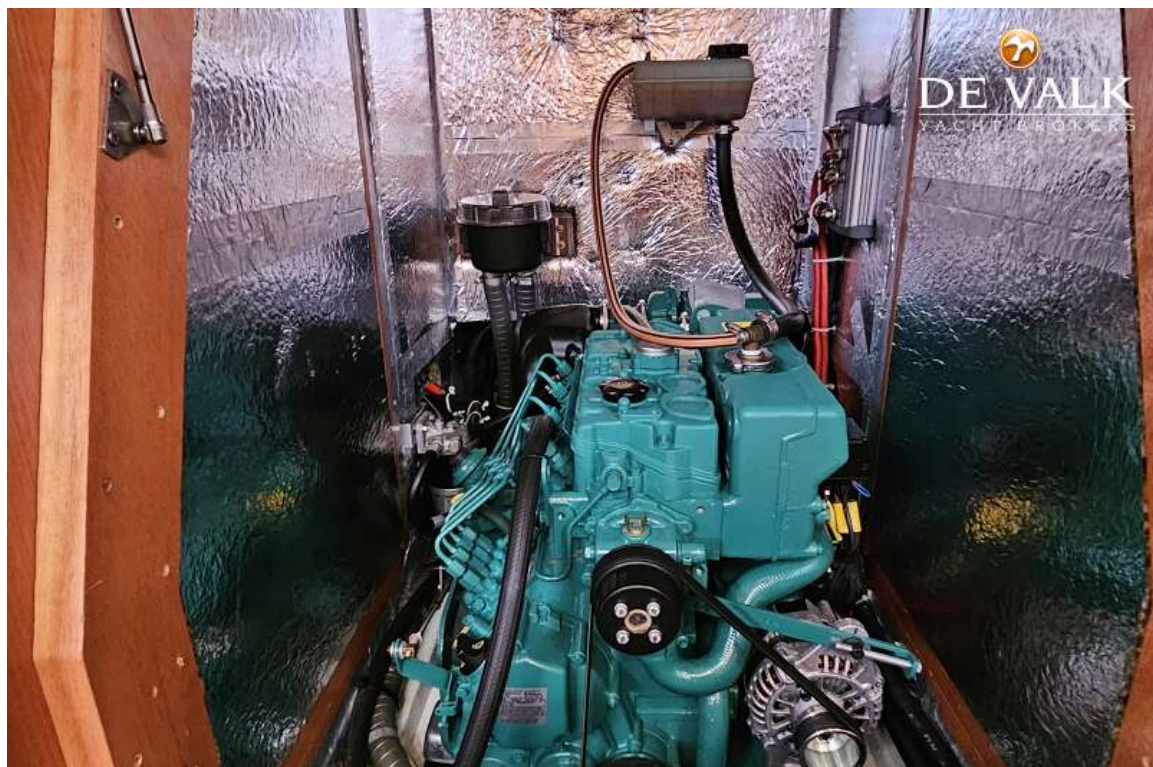


# BAVARIA 46 CRUISER





# BAVARIA 46 CRUISER



# BAVARIA 46 CRUISER

