



DE VALK
YACHT BROKERS



LOCHIN 333 HARBOUR PILOT



DE VALK
YACHT BROKERS

LOCHIN 333 HARBOUR PILOT

BROKER'S COMMENTS

This Lochin 333 Harbour Pilot of the original owner provides spritely performance with a modicum of accommodation and a large wheelhouse space. The cockpit is very spacious and can be used for fishing, diving and survey work. This Lochin 333 has had light commercial use that consisted of day fishing trip charters. The sea keeping qualities of the Lochin 333 hull are legendary, confirmed by their use for many commercial applications including lifeboats! The advertised price is ex. VAT. Sale of the company that owns the boat is negotiable.

Nick Lanting

SPECIFICATIONS

Dimensions	10.06 x 3.58 x 1.00 (m)	Builder	Lochin Marine International
Built	1999	Cabins	1
Material	GRP	Berths	2
Engine(s)	1 x Yanmar 6LY2-STE diesel	Hp/Kw	440.00 (hp), 323.84 (kw)
Asking price	€ 89.000 (VAT Not paid)	Lying	elsewhere / Not at sales office

CONTACT

Sales office	De Valk Thuishaven	Telephone	+31 35 5829042
Address	Marinaweg 8 1361 AC Almere NL	E-mail	thuishaven@devalk.nl

DISCLAIMER

These particulars are given in good faith as supplied but cannot be guaranteed.



LOCHIN 333 HARBOUR PILOT

GENERAL

Model	LOCHIN 333 HARBOUR PILOT
Type	motor yacht
LOA (m)	10,06
LWL (m)	8,38
Beam (m)	3,58
Draft (m)	1,00
Headroom (m)	1,88
Year built	1999
Builder	Lochin Marine International
Country	United Kingdom
Displacement (t)	7
CE norm	NA
Hull material	GRP
Hull colour	blue Painted, 5 layers of doublecoat
Hull shape	multi hard chine
Superstructure material	GRP
Rubbing strake	rubber
Deck material	GRP
Deck finish	Non skid rubber
Cockpit deck finish	non-skid paint
Antifouling (year)	2022
Window frame	aluminium
Window material	tempered glass
Deckhatch	yes
Radar arch	non collapsible
Fuel tank (litre)	stainless steel 2 x 400
Level indicator (fuel tank)	Manual gauge
Freshwater tank (litre)	polyethylene 100
Blackwater tank (litre)	polyethylene 80
Blackwater tank extraction	deck extraction + pump



LOCHIN 333 HARBOUR PILOT

Wheel steering	hydraulic
Inside helm position	yes
Emergency tiller	yes
More info on hull	Underwaterbody stripped + anti osmosis treatment 2004

ACCOMMODATION

Cabins	1
Berths	2
Interior	teak
Floor	wood HPL with teak/holly look
Open cockpit	yes
Saloon	yes
Headroom saloon (m)	1,88
Heating	diesel ducted hot air Webasto
Chart table	yes
Opening door to cockpit	yes
Galley	yes
Countertop	wood
Sink	stainless steel
Microwave/oven combi	yes
Fridge	2 x drawer fridge
Hot water system	by engine
Water pressure system	electrical
Coffee maker	yes
Owners cabin	bunk bed Upper bunk has no mattress anymore
Bed length (m)	1,95 x 0,65
Wardrobe	hanging and shelves
Bathroom	en suite
Toilet	In bathroom
Toilet system	manual Electric pump kit loose o board



MACHINERY

No of engines	1
Make	Yanmar
Type	6LY2-STE
HP	440
kW	323.84
Fuel	diesel
Maximum speed (kn)	22
Cruising speed (kn)	14
Consumption (l/hr)	50
Engine hours	5500
Engine cooling system	freshwater heat exchanger
Drive	shaft
Engine controls	bowden cable Morse, emergency cable is already installed
Gearbox	hydraulic Twin Disc MG5061A (2012)
Bowthruster	electric Vetus
Exhaust	watercooled
Propeller type	fixed
Propeller blades	5
Propeller shaft material	stainless steel
Shaft lubrication	water
Manual bilge pump	RM 69
Electric bilge pump	yes
Bilge alarm	yes
Electrical installation	12 V + 230 V
Generator	Portable Honda petrol generator
Batteries	2
Start battery	220 Ah (2024)
Service battery	220 Ah (2024)
Battery monitor	Victron
Battery charger	Victron Blue Power 12/20 for start battery



LOCHIN 333 HARBOUR PILOT

Battery charger/inverter	Victron 12/1600/75
Diode battery combiners	yes
Shorepower	with cable
Trimtabs	Electric/hydraulic

NAVIGATION

Compass	Plastimo
Electric compass	In autopilot
Depth sounder	yes
Log	yes
Fish finder	Humminbird Helix S
VHF	Simrad Axis RT 1400 + Simrad DSC Controller
Autopilot	Simrad AP44 + NAC3
Rudder angle indicator	In autopilot
Radar	Simrad RA30 + ARPA
Plotter/GPS	Simrad NSEC 12 colour + Simrad NSE 7
Navtex	Clipper
Electronic chart(s)	yes
AIS transponder	Simrad A150 AIS B
EPIRB	yes
Navigation lights	yes
Extra info	Simrad RS20 2nd VHF
Extra info	Lowrance 3rd VHF

EQUIPMENT

Fixed windscreen	yes
Bathing platform	Teak
Boarding ladder	stainless steel
Anchor	yes
Anchor chain	Short piece of chain + 200 meter of rope
Capstan	CJ, on starboard sidedeck



LOCHIN 333 HARBOUR PILOT

Deck wash	yes
Sea railing	stainless steel
Grab rail (superstructure)	stainless steel
Pulpit	yes
Life raft	container 2023
Life raft (pers)	12
Lifejackets	14 x
Lifebuoy	2 x
Wiper	3 x
Window heating	Through Webasto heating
Horn	yes
Binocular	yes
Radar reflector	Firdell
Fenders	yes
Mooring lines	yes
Spare parts	yes
Tools	yes
Radio	yes
Speakers in salon	4 x
Clock - barometer	Only clock
Fire extinguisher	4 x
Latest extinguisher survey	Unknown
Extinguisher in engine room	2 x Halon
Auto extinguisher system	FM 200 in engineroom





LOCHIN 333 HARBOUR PILOT



LOCHIN 333 HARBOUR PILOT



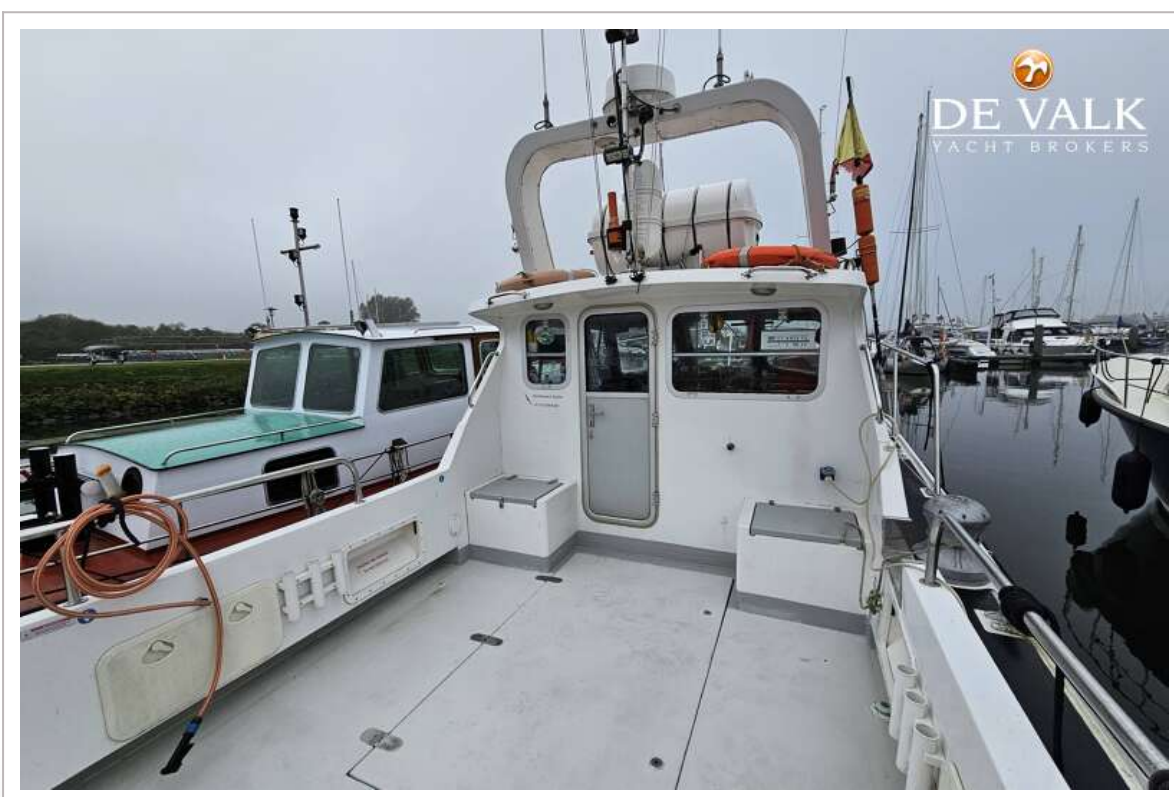
LOCHIN 333 HARBOUR PILOT



LOCHIN 333 HARBOUR PILOT



LOCHIN 333 HARBOUR PILOT



LOCHIN 333 HARBOUR PILOT



LOCHIN 333 HARBOUR PILOT



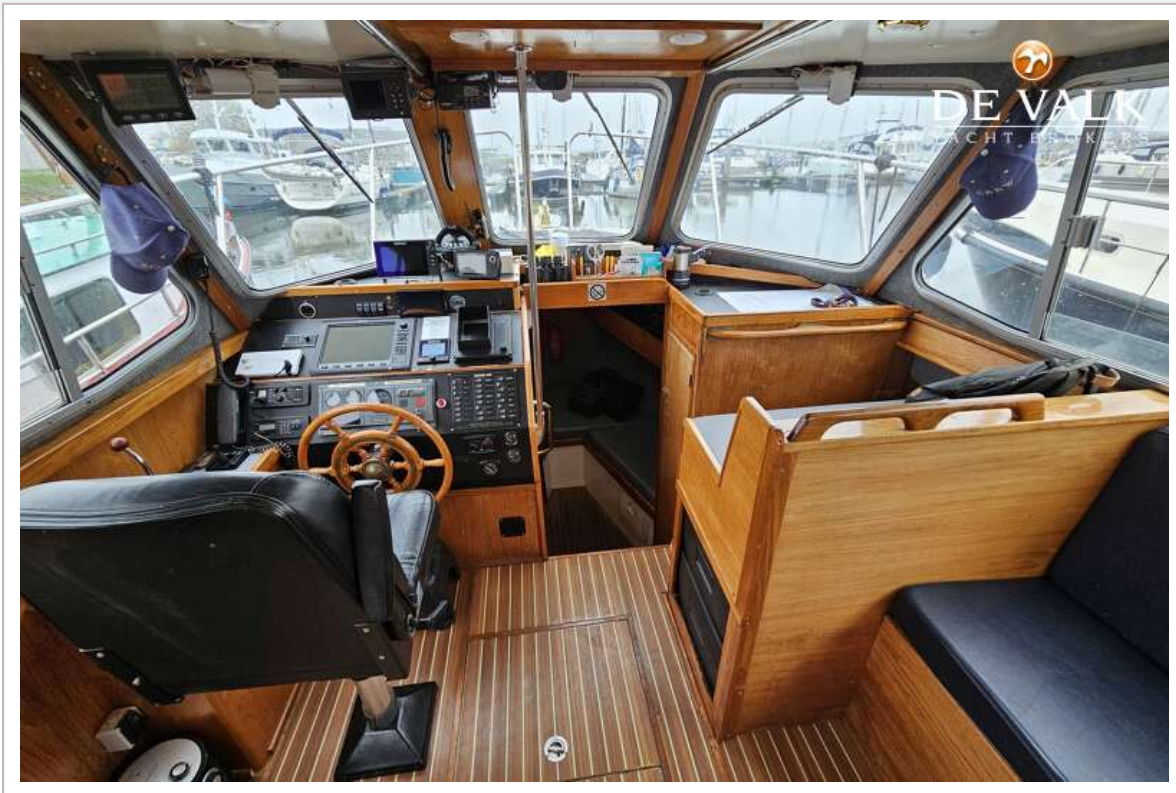
LOCHIN 333 HARBOUR PILOT



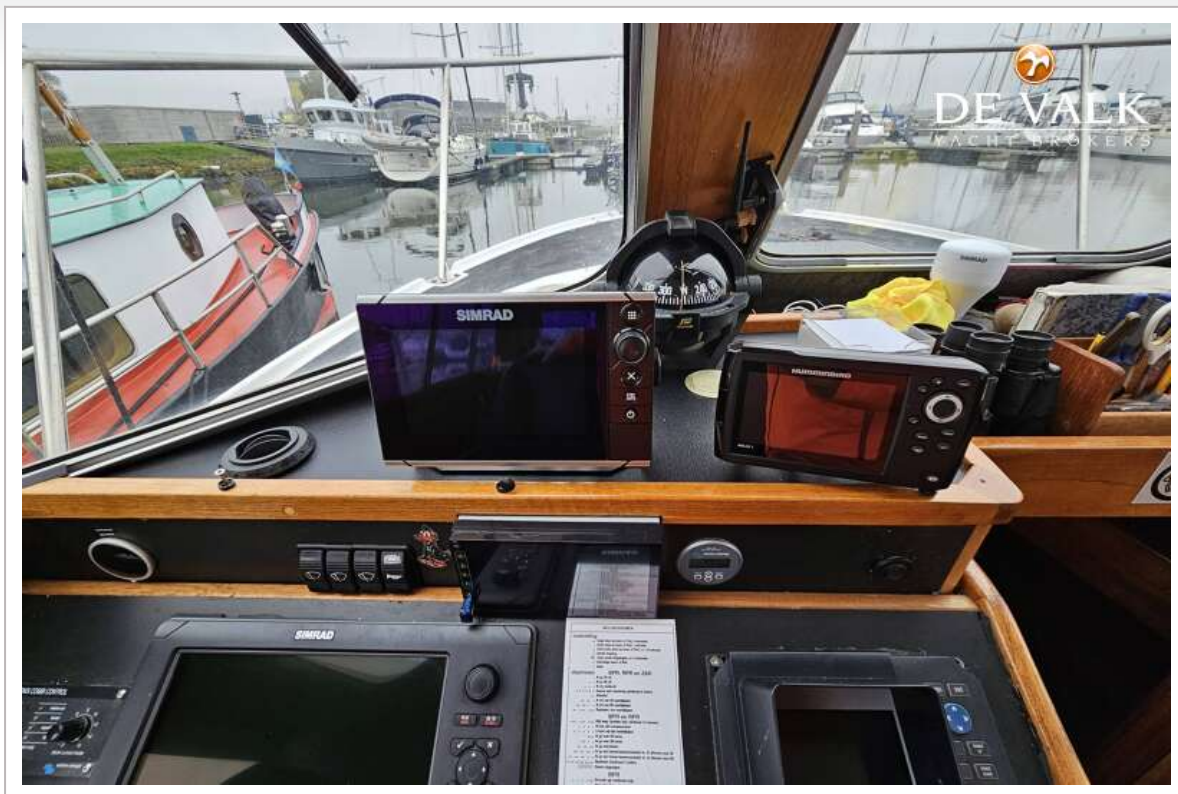
LOCHIN 333 HARBOUR PILOT



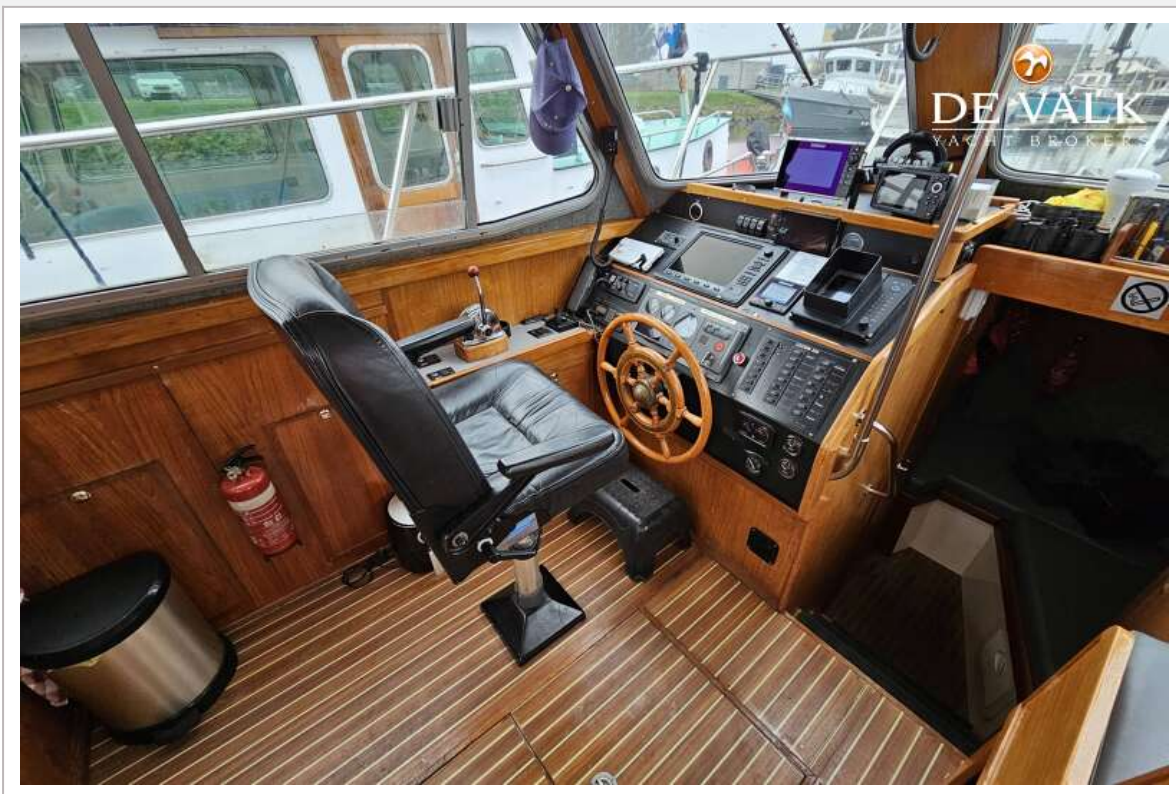
LOCHIN 333 HARBOUR PILOT



LOCHIN 333 HARBOUR PILOT



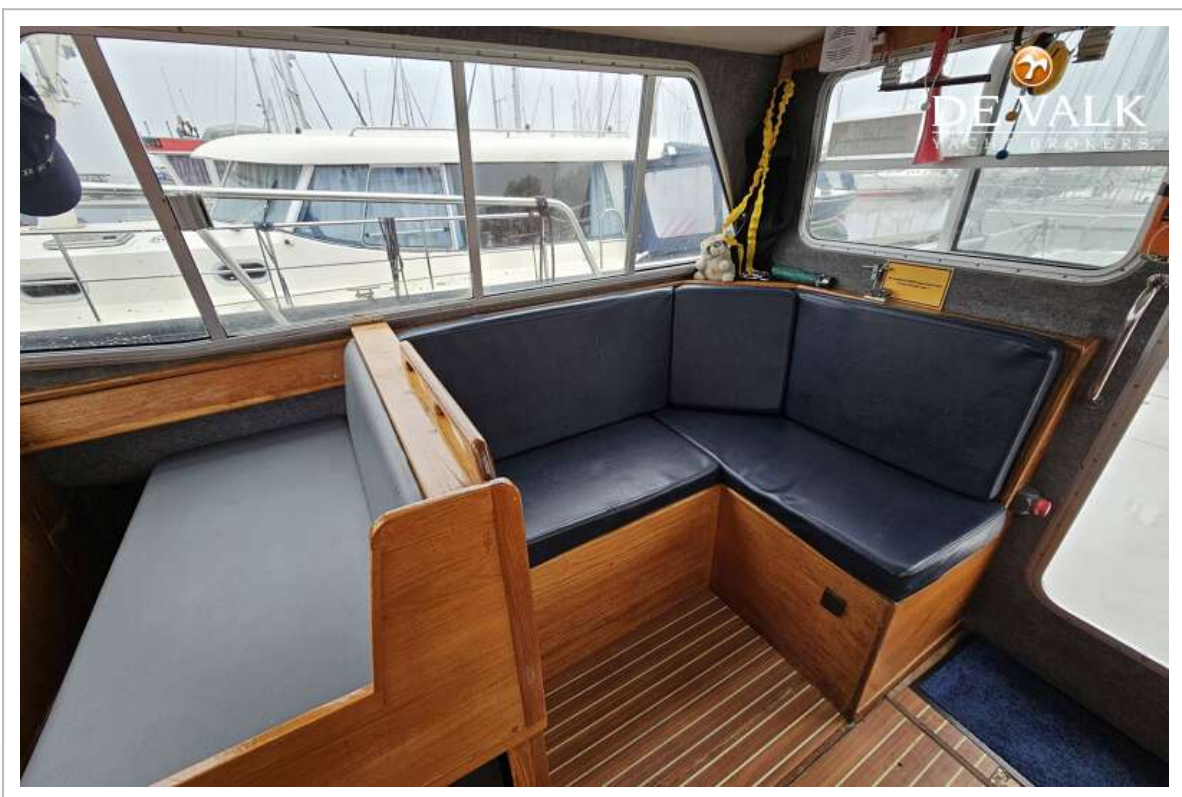
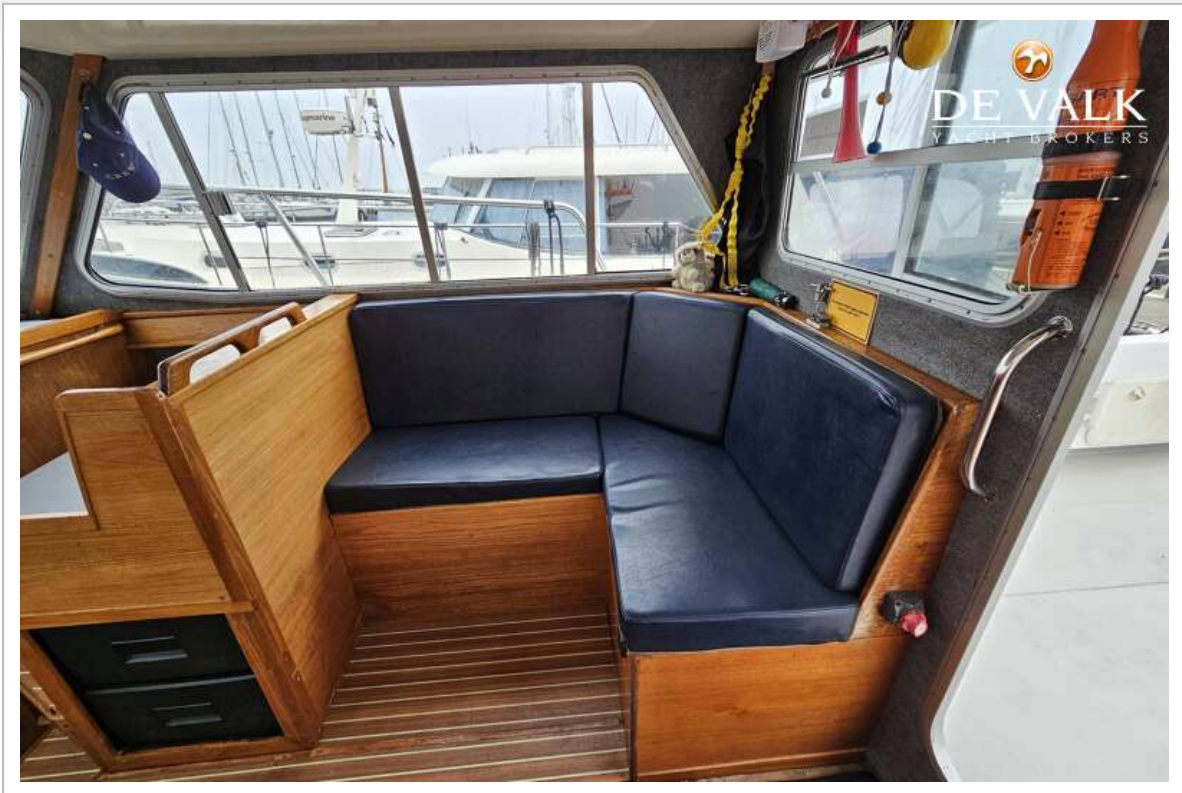
LOCHIN 333 HARBOUR PILOT



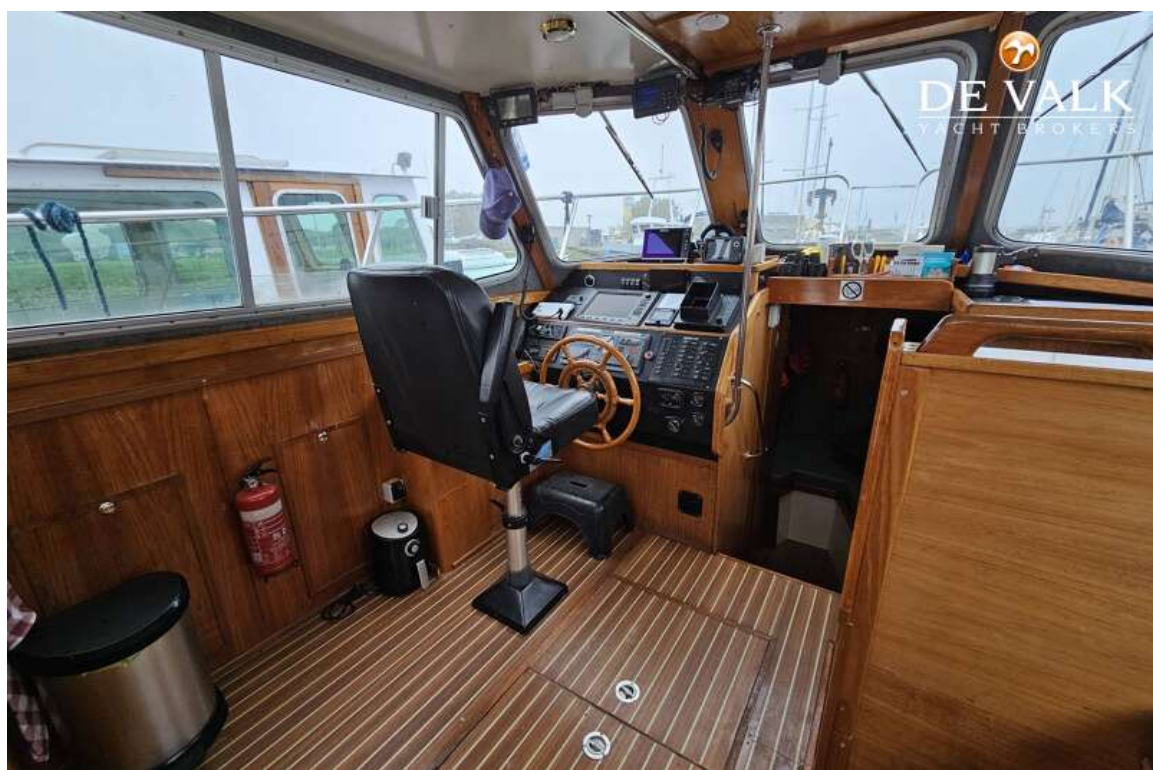
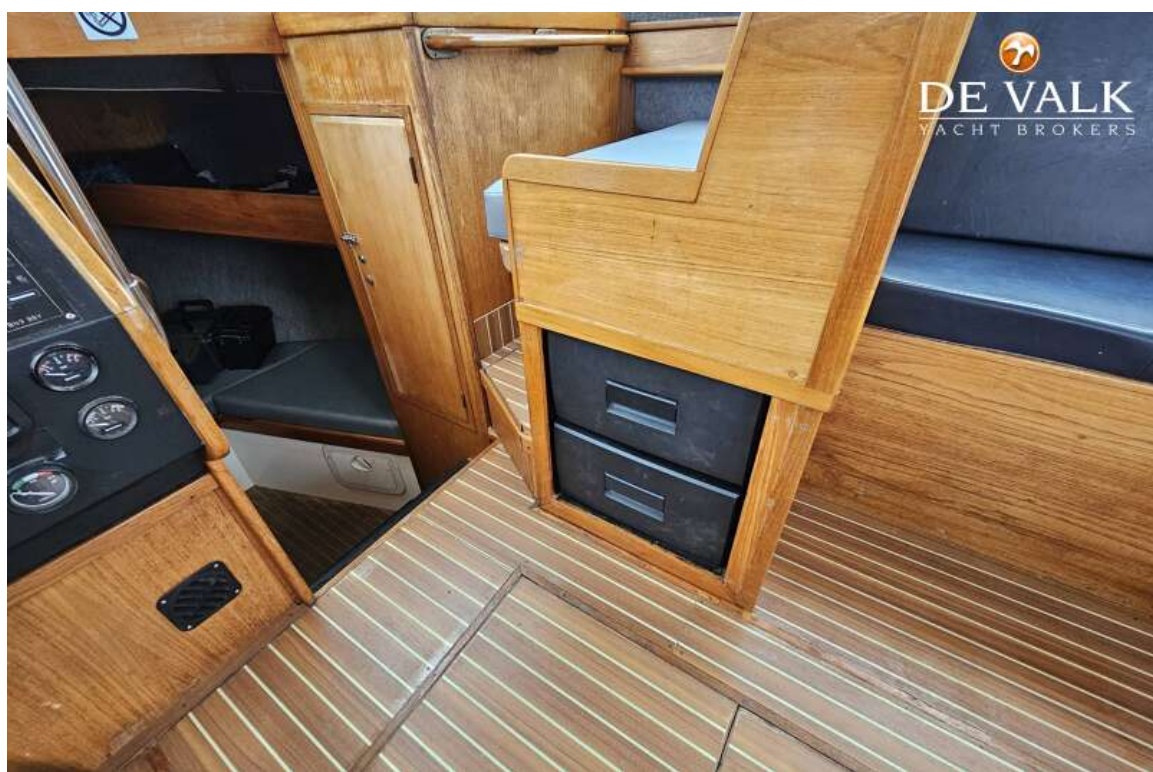
LOCHIN 333 HARBOUR PILOT



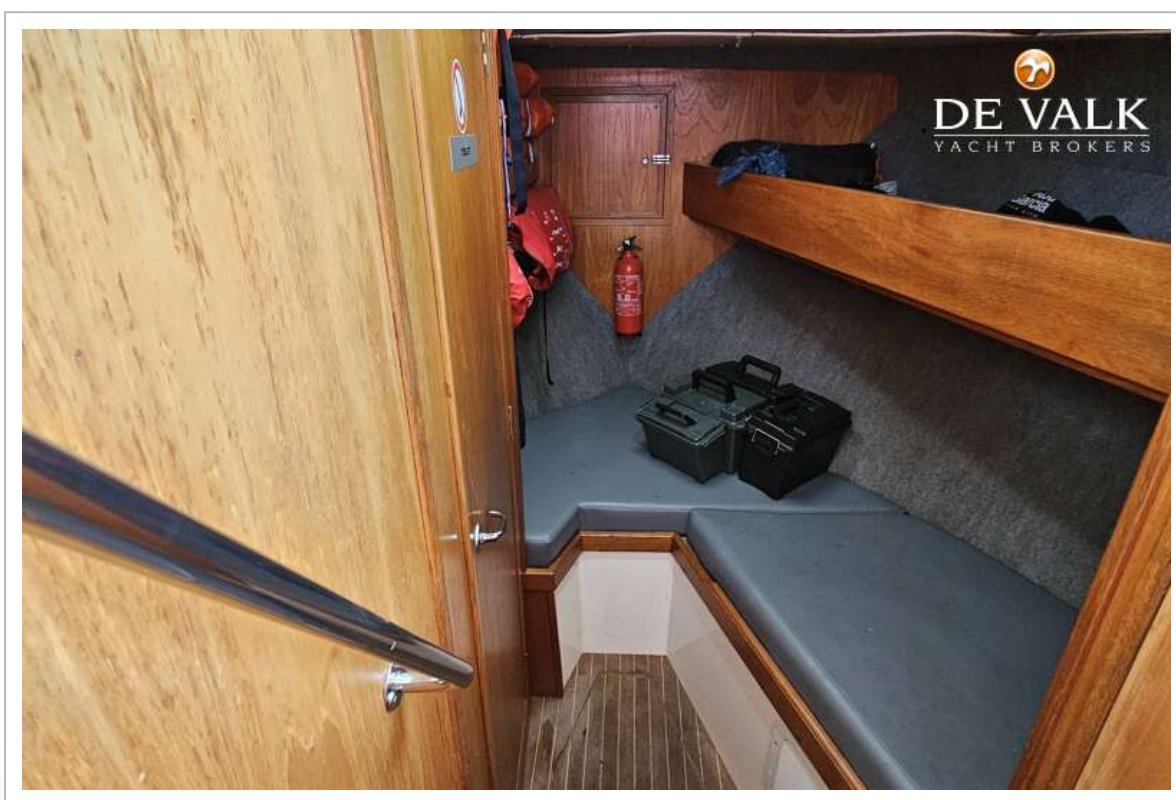
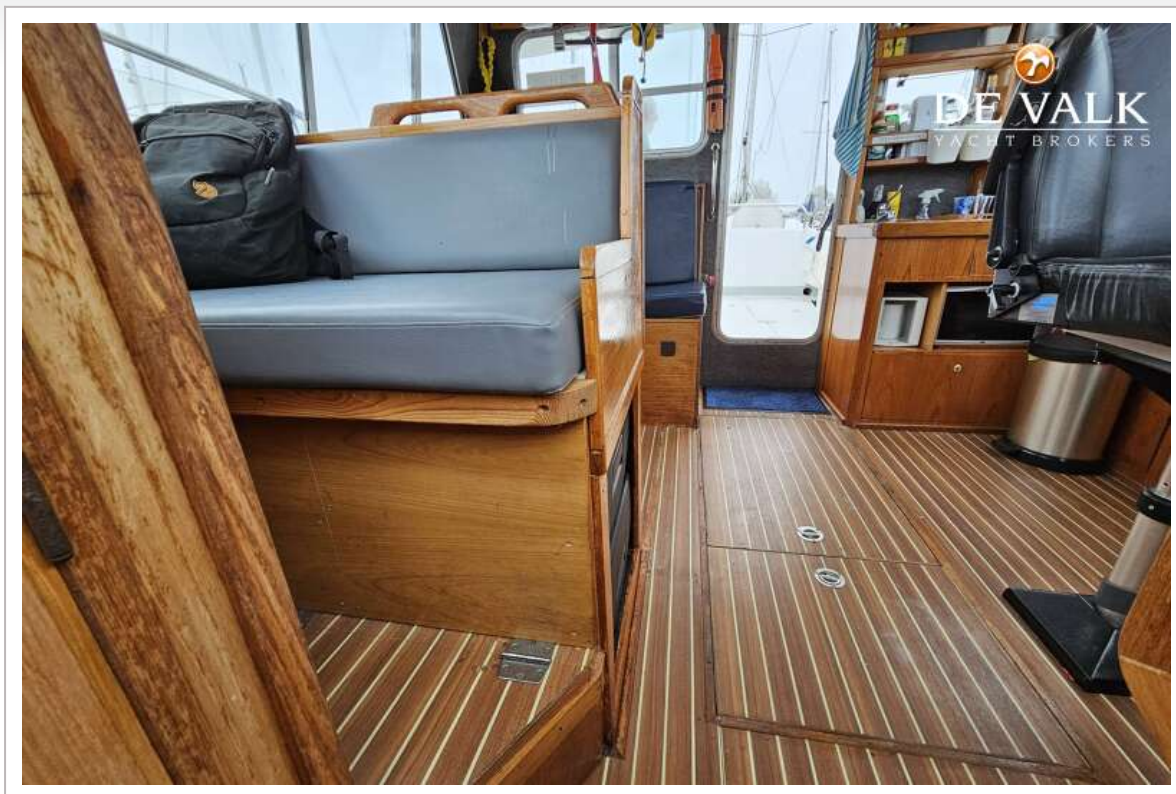
LOCHIN 333 HARBOUR PILOT



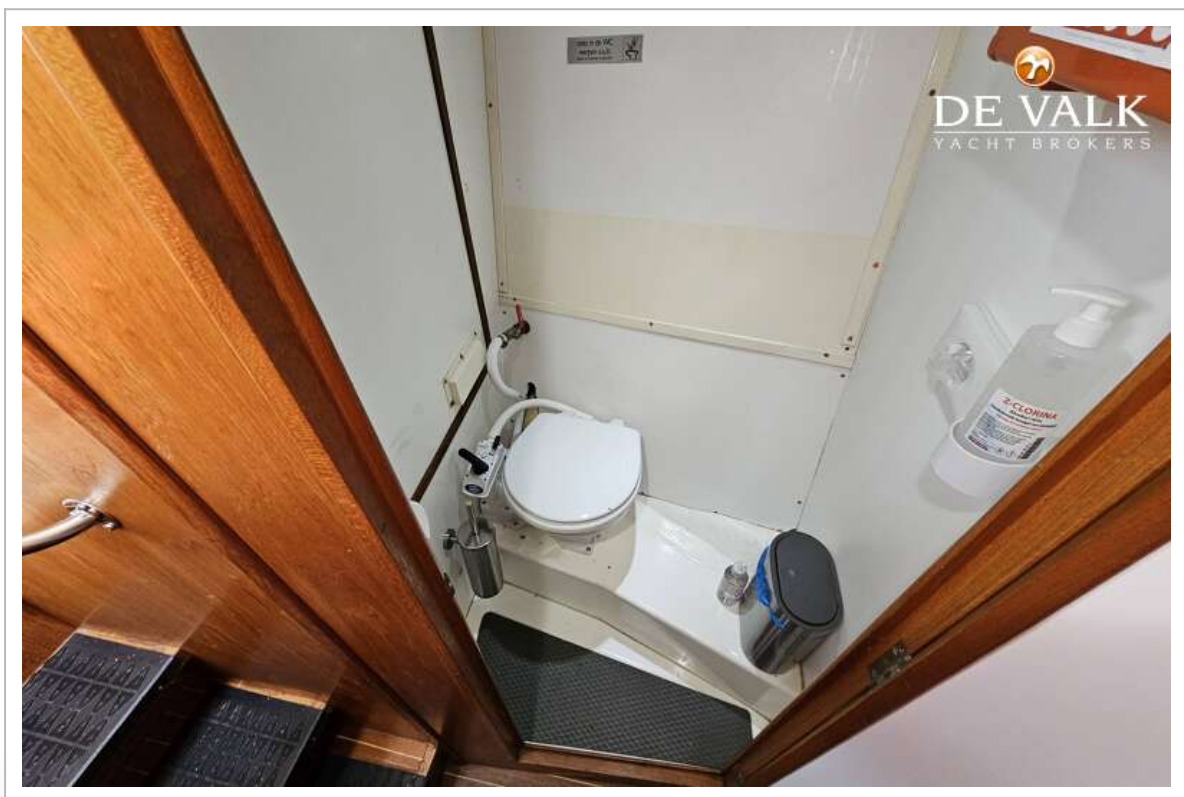
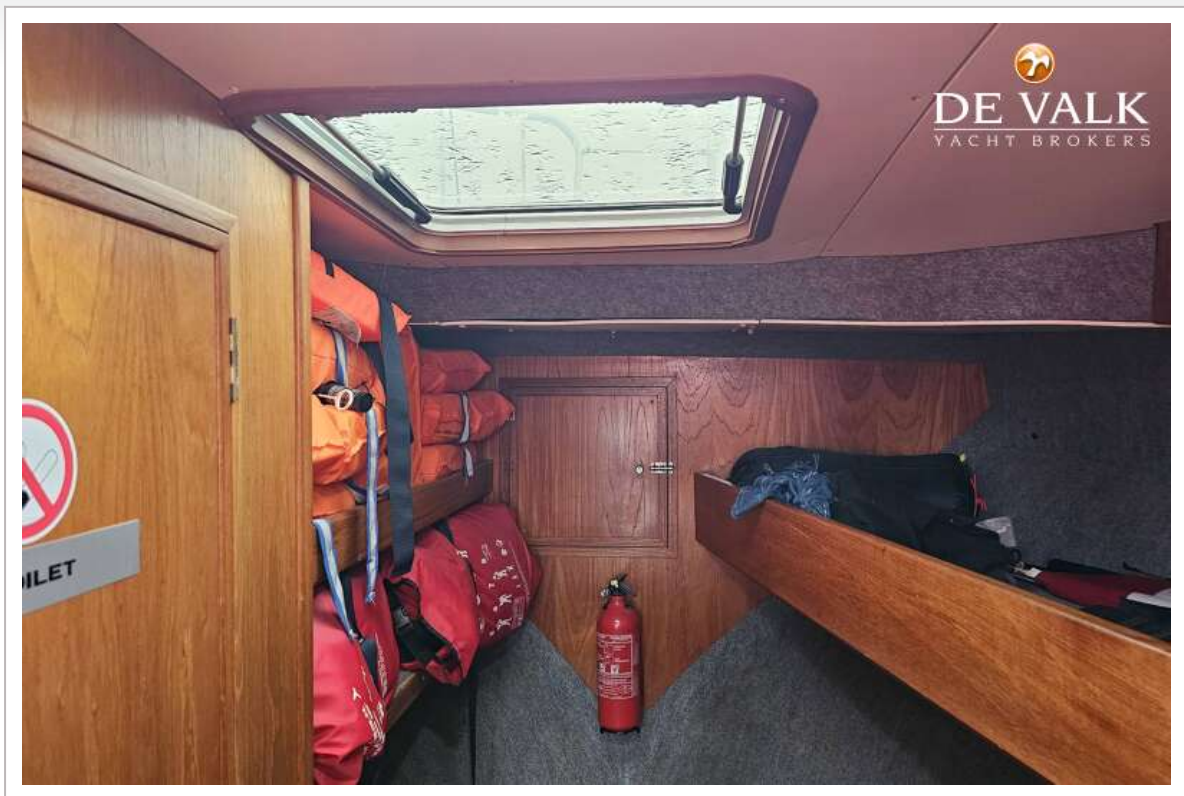
LOCHIN 333 HARBOUR PILOT

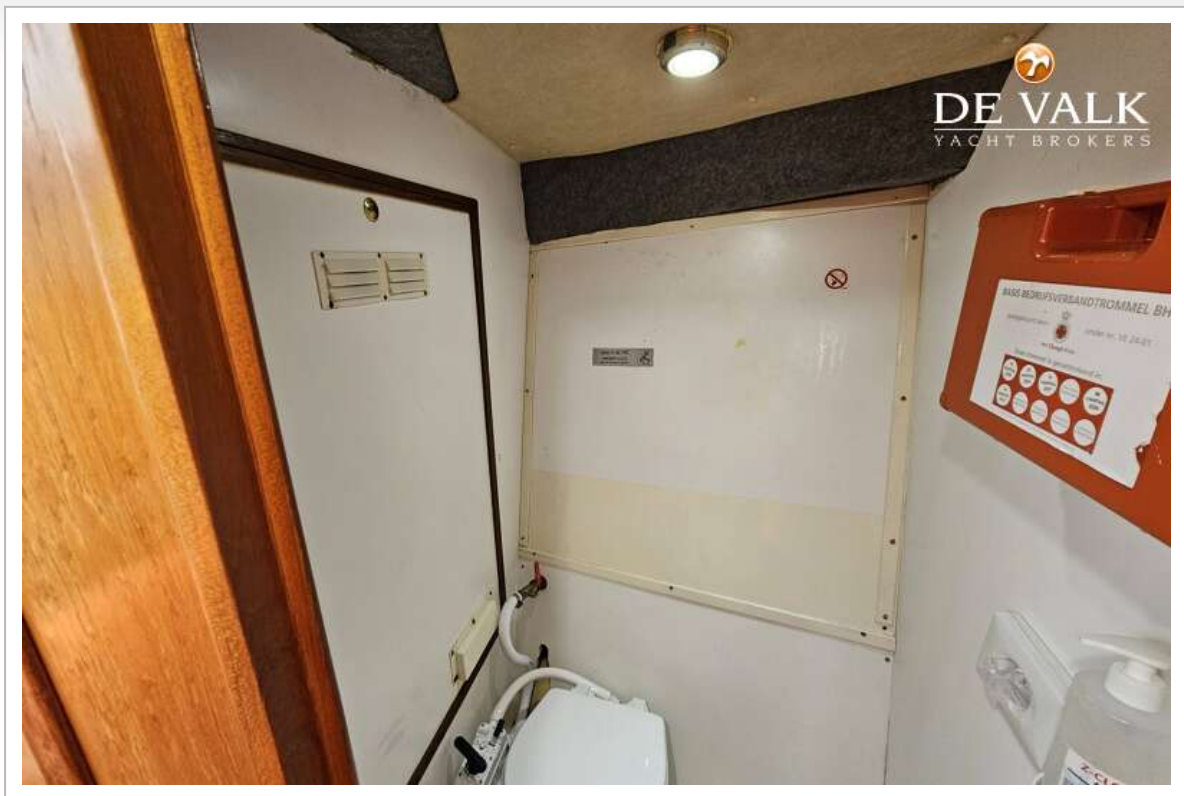


LOCHIN 333 HARBOUR PILOT



LOCHIN 333 HARBOUR PILOT





LOCHIN 333 HARBOUR PILOT

