



DE VALK  
YACHT BROKERS



## ZIJLMANS 1500 SUNDANCE



DE VALK  
YACHT BROKERS

# ZIJLMANS 1500 SUNDANCE

## BROKER'S COMMENTS

This Zijlmans Eagle 1500 OK is a beautiful boat for long stays on board and has a great cruising range with its 2,65 creep height. Has a powerful 192 Hp Deutz, solar panels, plenty of cupboard storage space, a remote controlled steering position. If you are curious, you can view this ship at our covered sales marina in Sneek.

*Peter Spruyt*

## SPECIFICATIONS

<b>Dimensions</b>	14.95 x 4.50 x 1.20 (m)	<b>Builder</b>	Zijlmans Jachtbouw Drimmelen
<b>Built</b>	2000	<b>Cabins</b>	2
<b>Material</b>	Steel	<b>Berths</b>	4
<b>Engine(s)</b>	1 x Vetus Deutz DTA64622A diesel	<b>Hp/Kw</b>	192.00 (hp), 141.31 (kw)
<b>Asking price</b>	sold (VAT )	<b>Lying</b>	

## CONTACT

<b>Sales office</b>	De Valk Sneek	<b>Telephone</b>	+31 (0)515 42 80 30
<b>Address</b>	Zwolsmanweg 7 8606 KC Sneek NL	<b>E-mail</b>	sneek@devalk.nl

## DISCLAIMER

These particulars are given in good faith as supplied but cannot be guaranteed.



# ZIJLMANS 1500 SUNDANCE

## GENERAL

<b>Model</b>	ZIJLMANS 1500 SUNDANCE
<b>Type</b>	motor yacht
<b>LOA (m)</b>	14,95
<b>Beam (m)</b>	4,50
<b>Draft (m)</b>	1,20
<b>Air draft (m)</b>	4,65
<b>Air draft min (m)</b>	2,65
<b>Headroom (m)</b>	1,98
<b>Year built</b>	2000
<b>Builder</b>	Zijlmans Jachtbouw Drimmelen
<b>Country</b>	The Netherlands
<b>Designer</b>	F. Kuyten
<b>Displacement (t)</b>	21000
<b>CE norm</b>	C
<b>Hull material</b>	steel
<b>Hull colour</b>	blue
<b>Hull shape</b>	hard chine
<b>Keel type</b>	long keel
<b>Superstructure material</b>	steel
<b>Rubbing strake</b>	stainless steel
<b>Deck material</b>	steel
<b>Deck finish</b>	teak Falls outside any inspection!
<b>Superstructure deck finish</b>	paint
<b>Cockpit deck finish</b>	paint
<b>Antifouling (year)</b>	2021
<b>Window frame</b>	aluminium
<b>Window material</b>	double glazing
<b>Deckhatch</b>	yes
<b>Portholes</b>	aluminium
<b>Mast can be lowered</b>	manual



# ZIJLMANS 1500 SUNDANCE

Fuel tank (litre)	steel 740 Ltr
Fuel tank 2 (litre)	steel 740 Ltr
Level indicator (fuel tank)	yes
Freshwater tank (litre)	steel 1000 Ltr
Level indicator (freshwater)	yes
Blackwater tank (litre)	polyethylene 100 Ltr
Level indicator (blackwater)	yes
Blackwater tank extraction	yes
Wheel steering	hydraulic
Inside helm position	yes

## ACCOMMODATION

Cabins	2
Berths	4
Interior	teak
Floor	teak and holly
Saloon	yes
Headroom saloon (m)	1,98 Mtr
Heating	central heating Kabola/ Radiator en Kickspace
Opening door to cockpit	yes
Galley	yes
Countertop	granite
Sink	stainless steel
Cooker	induction Zanussi 4 x
Extractor	Zanussi
Microwave	Koemic
Fridge	1 x Indell 130 Ltr/ 1 x Isotherm 85 Ltr
Freezer	Above both fridges + a loose freeser Zanussi 50 ltr
Hot water system	on central heating
Water pressure system	electrical
Owners cabin	French bed



# ZIJLMANS 1500 SUNDANCE

<b>Bed length (m)</b>	2,00 mtr
<b>Wardrobe</b>	hanging and shelves
<b>Bathroom</b>	en suite
<b>Toilet</b>	separate
<b>Toilet system</b>	electric
<b>Wash basin</b>	in the bathroom
<b>Shower</b>	en suite
<b>Guest cabin 1</b>	bunk bed
<b>Bed length (m)</b>	2,00 mtr
<b>Wardrobe</b>	shelves
<b>Washing machine</b>	Bosch 1400
<b>Dryer</b>	Bosch/ condensation

## MACHINERY

<b>No of engines</b>	1
<b>Make</b>	Vetus Deutz
<b>Type</b>	DTA64622A
<b>HP</b>	192
<b>kW</b>	141.31
<b>Fuel</b>	diesel
<b>Engine hours</b>	2670
<b>Engine cooling system</b>	freshwater heat exchanger
<b>Drive</b>	shaft
<b>Engine controls</b>	bowden cable
<b>Gearbox</b>	hydraulic
<b>Bowthruster</b>	hydraulic
<b>Sternthruster</b>	hydraulic
<b>Propeller type</b>	fixed
<b>Propeller shaft material</b>	stainless steel
<b>Shaft lubrication</b>	water
<b>Electric bilge pump</b>	yes



# ZIJLMANS 1500 SUNDANCE

<b>Electrical installation</b>	12/ 24/ 220 volt
<b>Generator</b>	wet exhaust Vetus Deutz 8 Kw
<b>Batteries</b>	7 x
<b>Start battery</b>	2 x 230 Amp
<b>Service battery</b>	4 x 200 Amp
<b>Generator battery</b>	1 x 60 Amp
<b>Battery monitor</b>	yes
<b>Battery charger</b>	Victron 3000 Amp
<b>Inverter</b>	Victron 70 Amp
<b>Solar panel</b>	2 x
<b>Diode battery combiners</b>	yes
<b>Shorepower</b>	yes

## NAVIGATION

<b>Electric compass</b>	Raytheon ST 60
<b>Depth sounder/log</b>	Raytheon ST 60
<b>VHF</b>	Shipmate RS 8300/ Shipmate speakers
<b>Autopilot</b>	Raytheon ST 6000+
<b>Rudder angle indicator</b>	Raytheon ST 60
<b>Radar</b>	Raytheon SL 70
<b>GPS</b>	Raytheon
<b>Plotter</b>	Raytheon RC 630
<b>Camera</b>	yes
<b>Navigation lights</b>	yes

## EQUIPMENT

<b>Cockpit cover</b>	Falls outside any inspection!
<b>Cockpit cushions</b>	yes
<b>Cockpit table</b>	yes
<b>Bathing platform</b>	yes
<b>Boarding ladder</b>	yes



# ZIJLMANS 1500 SUNDANCE

Transom door	yes
Deck shower	yes
Anchor	Pool
Anchor chain	yes
Windlass	electrical Lofrans
Deck wash	yes
Sea railing	stainless steel
Railing side opening gates	2 x
Wiper	3 x
Horn	electric
Fenders	yes
Mooring lines	yes
TV	LC
Radio-cd player	Sharp
Cockpit speakers	yes
Clock - barometer	yes
Fire extinguisher	yes
Extinguisher in engine room	yes



# ZIJLMANS 1500 SUNDANCE





# ZIJLMANS 1500 SUNDANCE



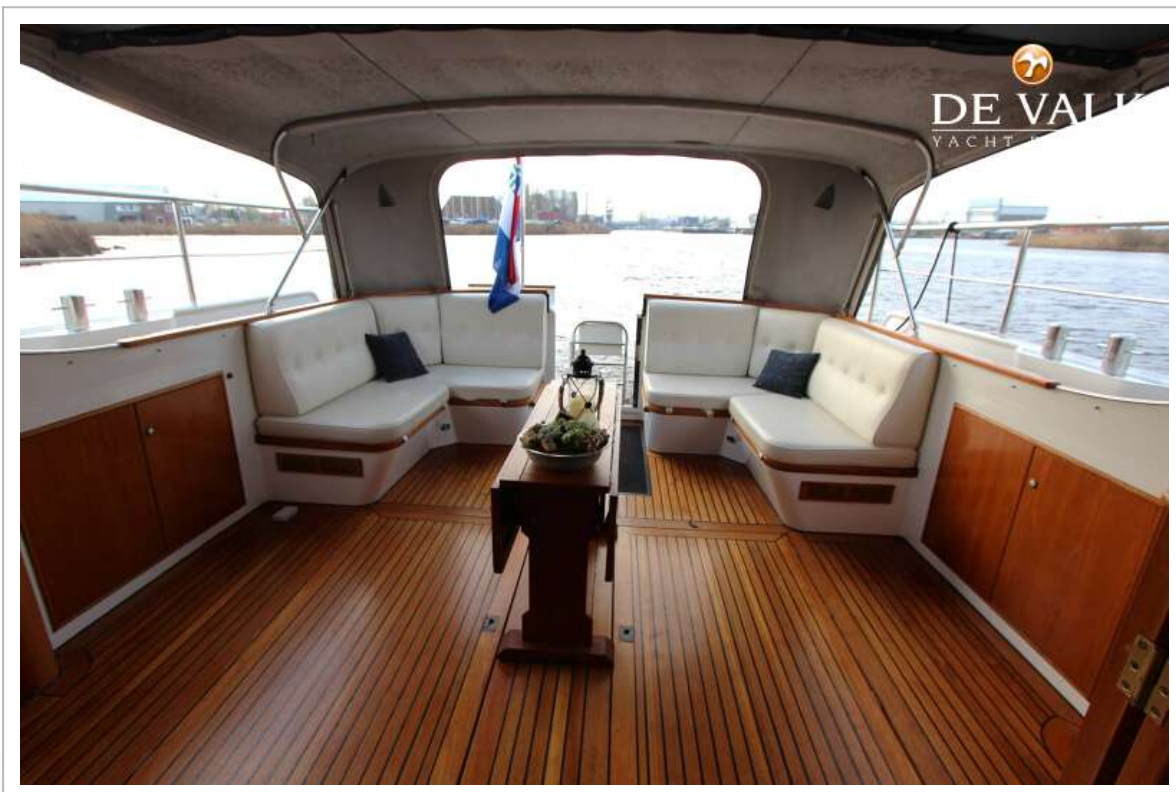
# ZIJLMANS 1500 SUNDANCE



# ZIJLMANS 1500 SUNDANCE



# ZIJLMANS 1500 SUNDANCE



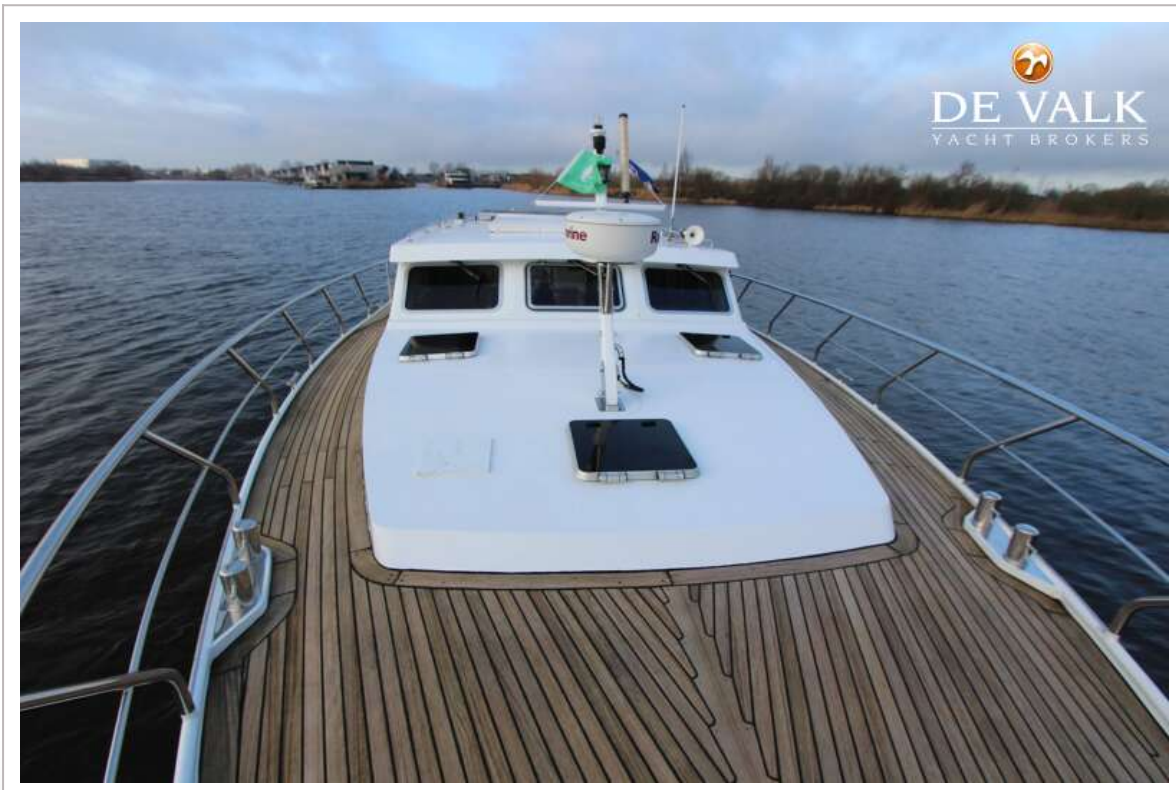
# ZIJLMANS 1500 SUNDANCE



# ZIJLMANS 1500 SUNDANCE



# ZIJLMANS 1500 SUNDANCE



# ZIJLMANS 1500 SUNDANCE





# ZIJLMANS 1500 SUNDANCE



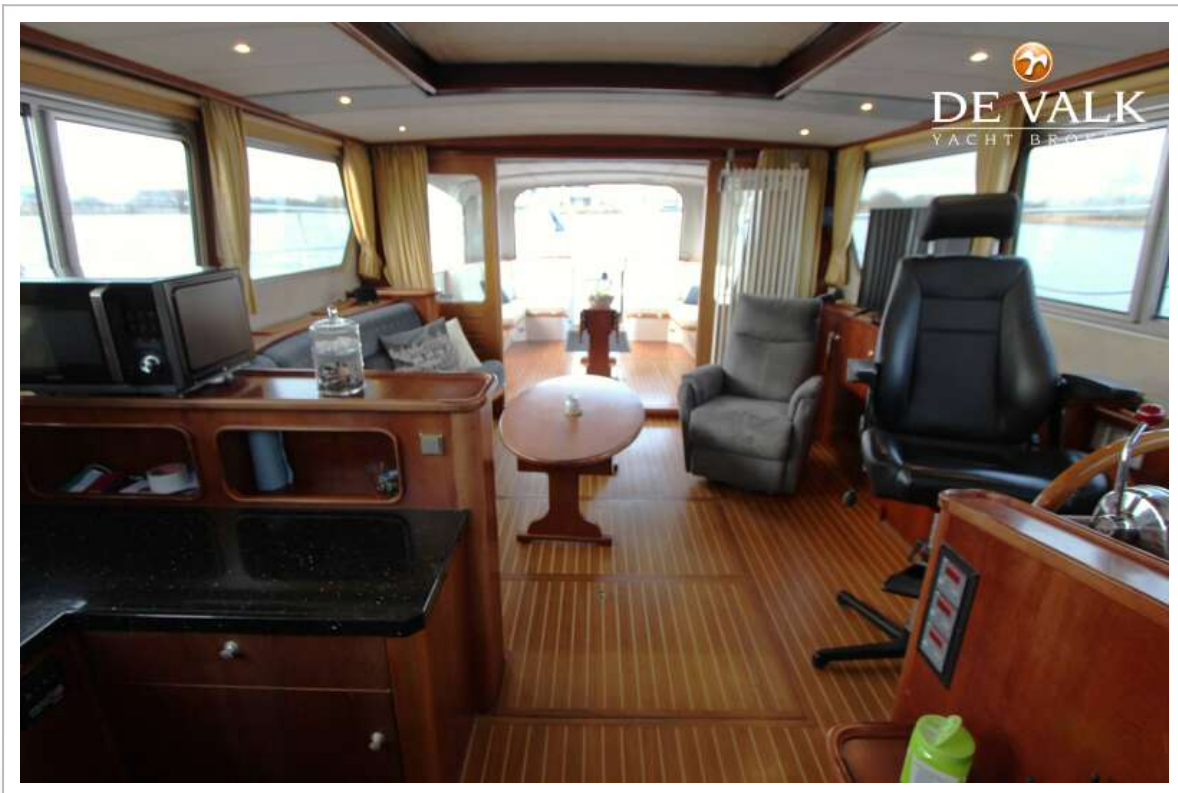
# ZIJLMANS 1500 SUNDANCE



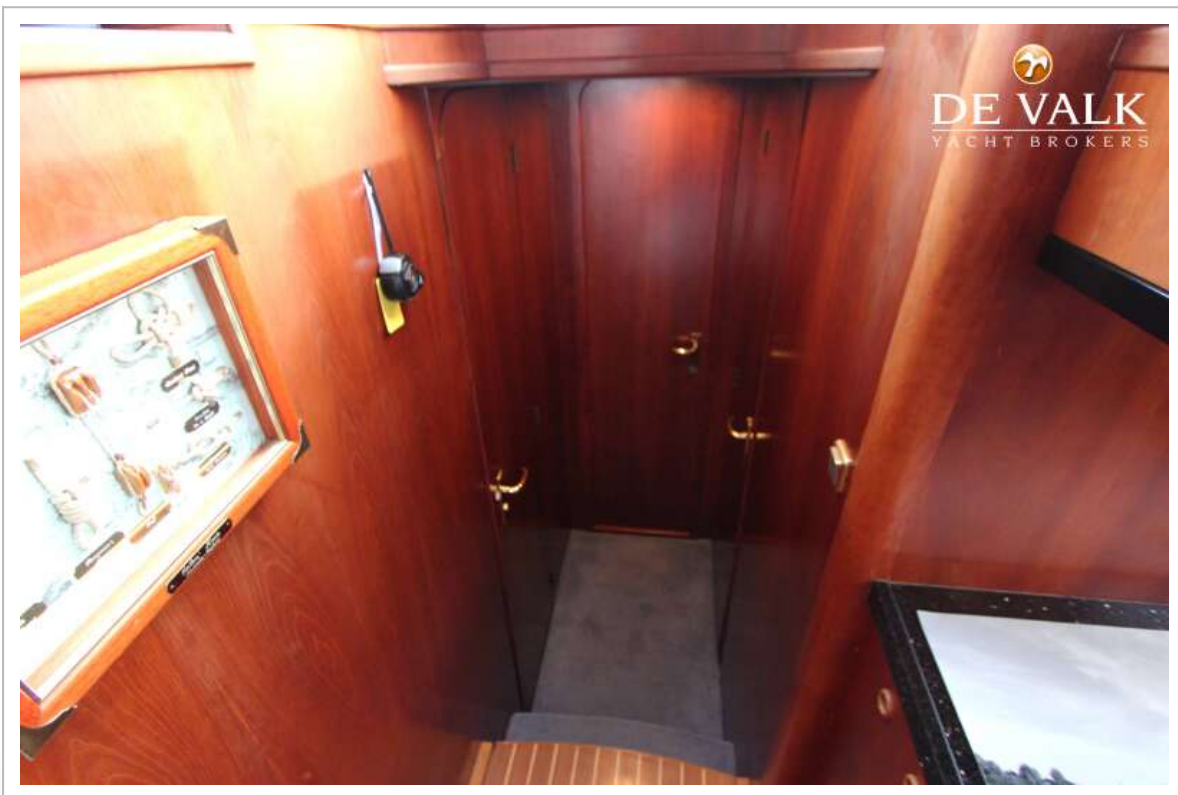
# ZIJLMANS 1500 SUNDANCE



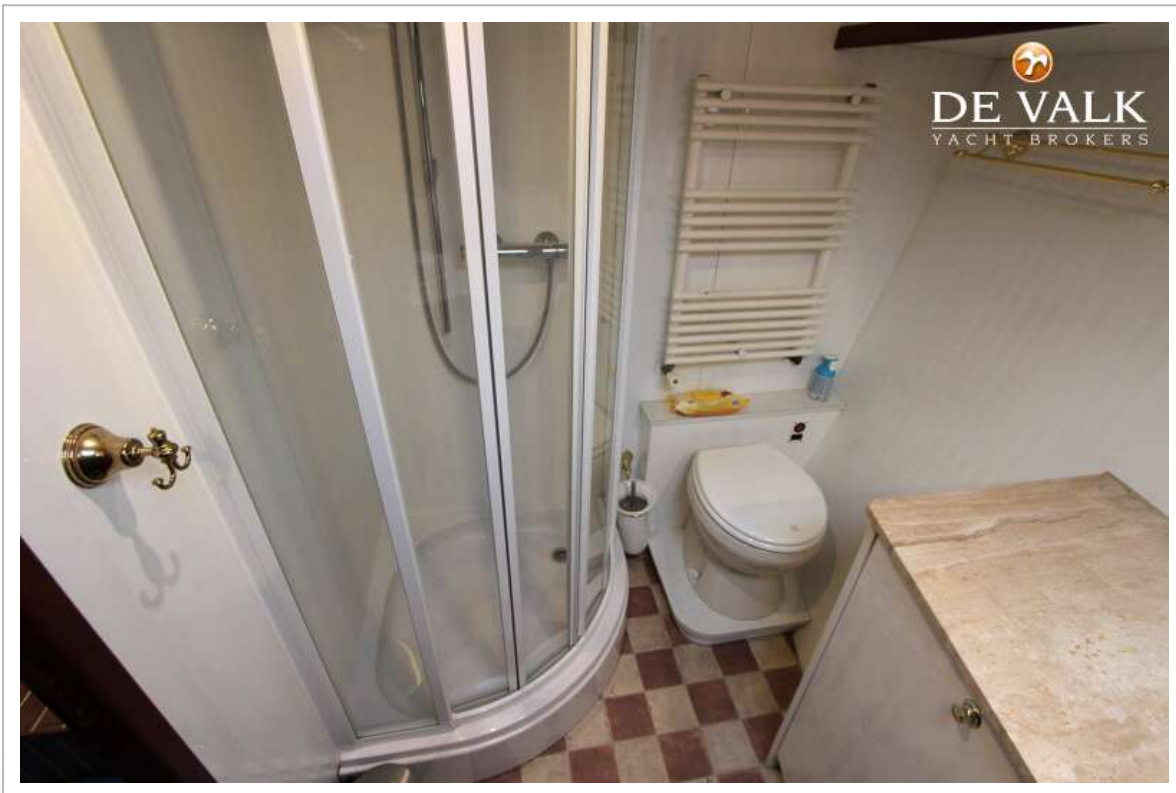
# ZIJLMANS 1500 SUNDANCE



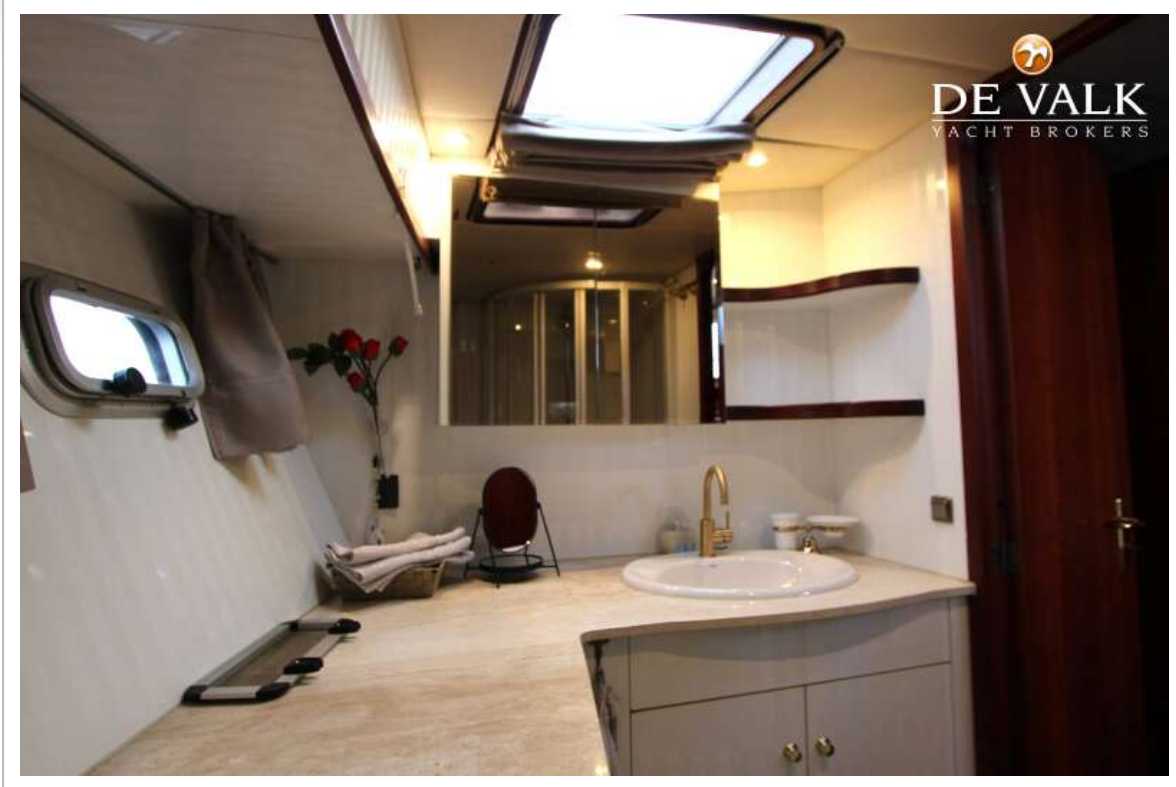
# ZIJLMANS 1500 SUNDANCE



# ZIJLMANS 1500 SUNDANCE



# ZIJLMANS 1500 SUNDANCE



# ZIJLMANS 1500 SUNDANCE

